

V&V Reference Report

L2 ASCDS Version : 7.6.9

Observation 3012 - L2 Version 001
Chandra X-Ray Center

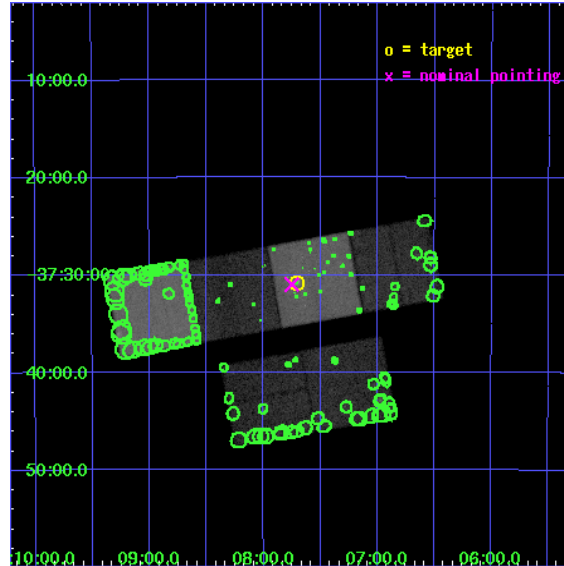
L2 Processing Date : Oct 15 2006

Contents

1	Front	2
2	OBI	3
2.1	OBI	3
2.1.1	Images	3
2.1.2	Bias	3
2.1.3	Parameters	4
2.1.4	Events	4
2.2	Compared Parameters	5
2.3	Aspect	6
2.4	Star Slots	9
2.4.1	Slot 3	9
2.4.2	Slot 4	10
2.4.3	Slot 5	11
2.4.4	Slot 6	12
2.4.5	Slot 7	13
2.5	FID Slots	14
2.5.1	Slot 0	14
2.5.2	Slot 1	15
2.5.3	Slot 2	16
3	Point Sources	17
A	Summary	18
A.1	Status	18
A.2	Comments	18

1 Front

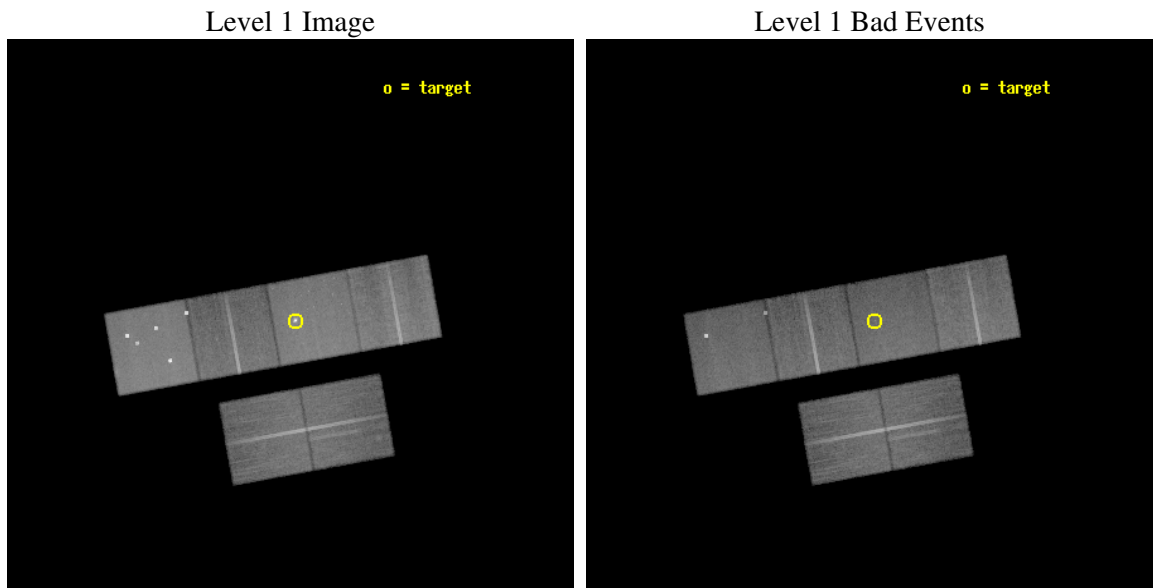
seq_num	700451
obs_id	3012
title	DIFFUSE X-RAY EMISSION, SUPERWINDS, AND STELLAR X-RAY SOURCES IN THE STARBURST GALAXIES NGC 2146 AND NGC 1808
observer	Dr Philip Maloney
object	NGC 1808
dtcycle	0
cycle	P
ra_targ	76.92625
dec_targ	-37.512778
ra_nom	76.937668016046
dec_nom	-37.516133364329
roll_nom	349.75819343815
revision	2
ontime	43427.199838221
livetime	42877.298485149
ontime2	43423.958867937
ontime3	43423.958857924
ontime5	43427.199838221
ontime6	43427.199838221
ontime7	43427.199838221
ontime8	43423.958987445
l2events	428743



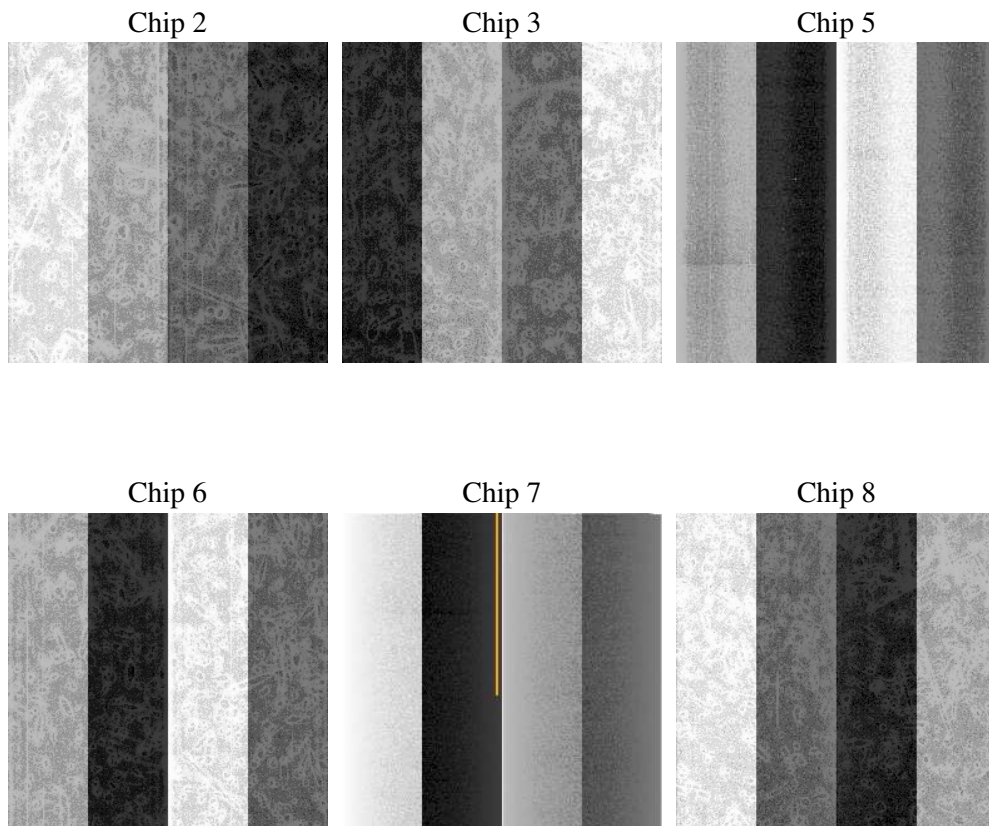
2 OBI

2.1 OBI

2.1.1 Images



2.1.2 Bias



2.1.3 Parameters

obi_num	0
ascdsver	7.6.9
caldsver	3.2.3
date	2006-10-15T06:31:56
revision	2

sched_exp_time	43668.080000
ontime	43432.719082981
ontime2	43429.478112698
ontime3	43429.478102684
ontime5	43432.719082981
ontime6	43432.719082981
ontime7	43432.719082981
ontime8	43429.478122622
l1events	1888069

2.1.4 Events

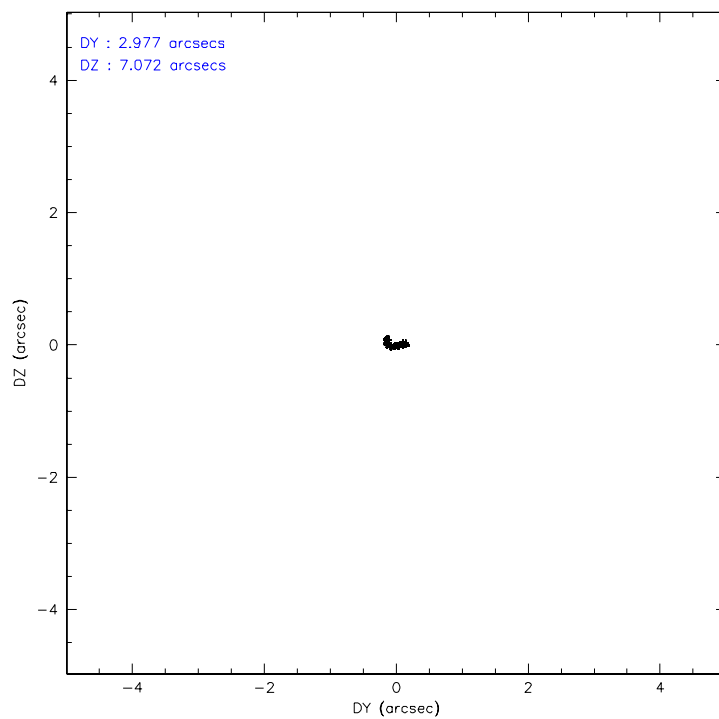
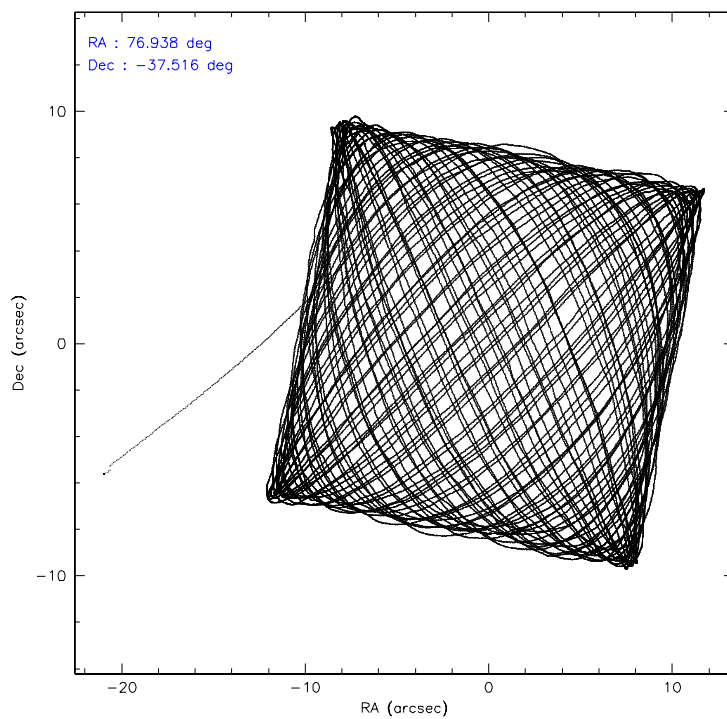
	ccd 2	ccd 3	ccd 5	ccd 6	ccd 7	ccd 8
level 1 events	263013	248139	421947	257385	363424	334161
rejected events	231958	217117	219110	224786	211586	264531
rejected %	88%	87%	51%	87%	58%	79%

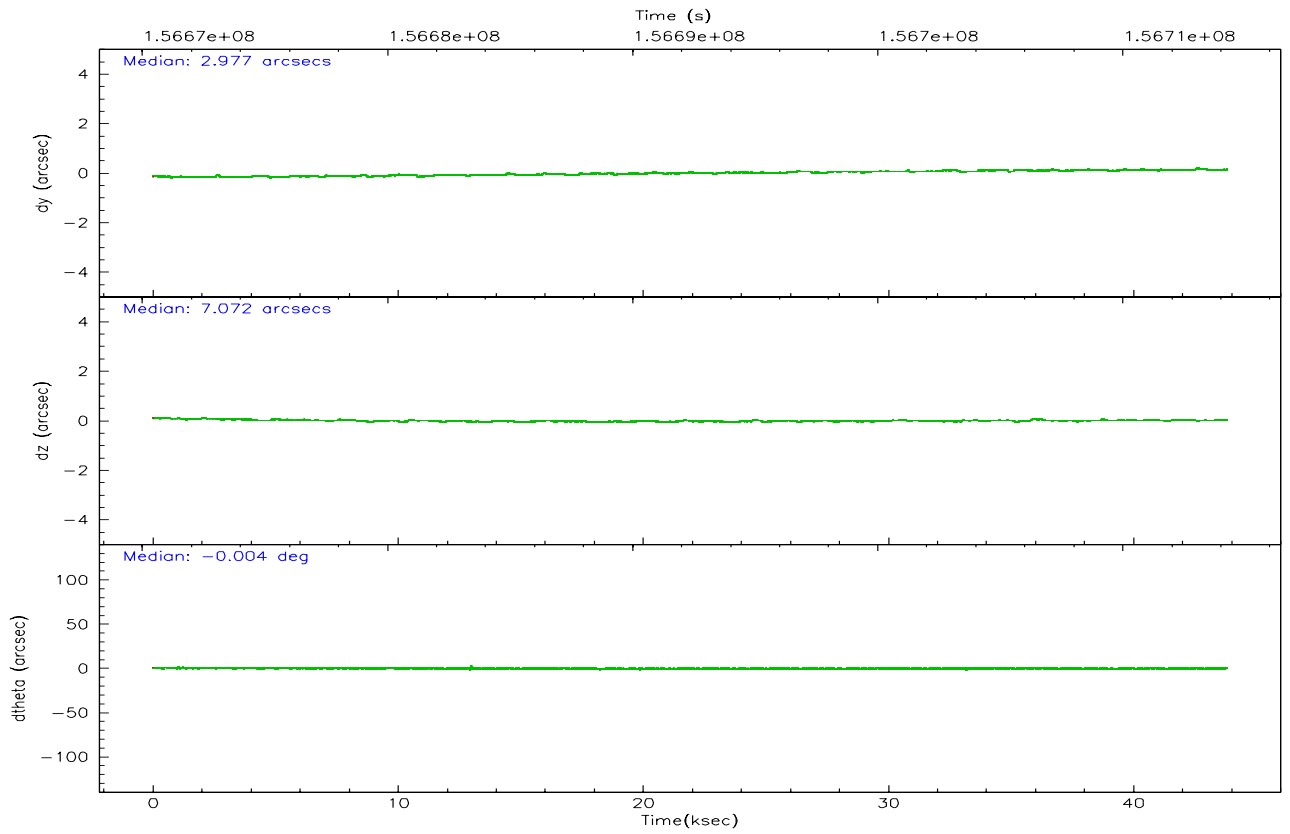
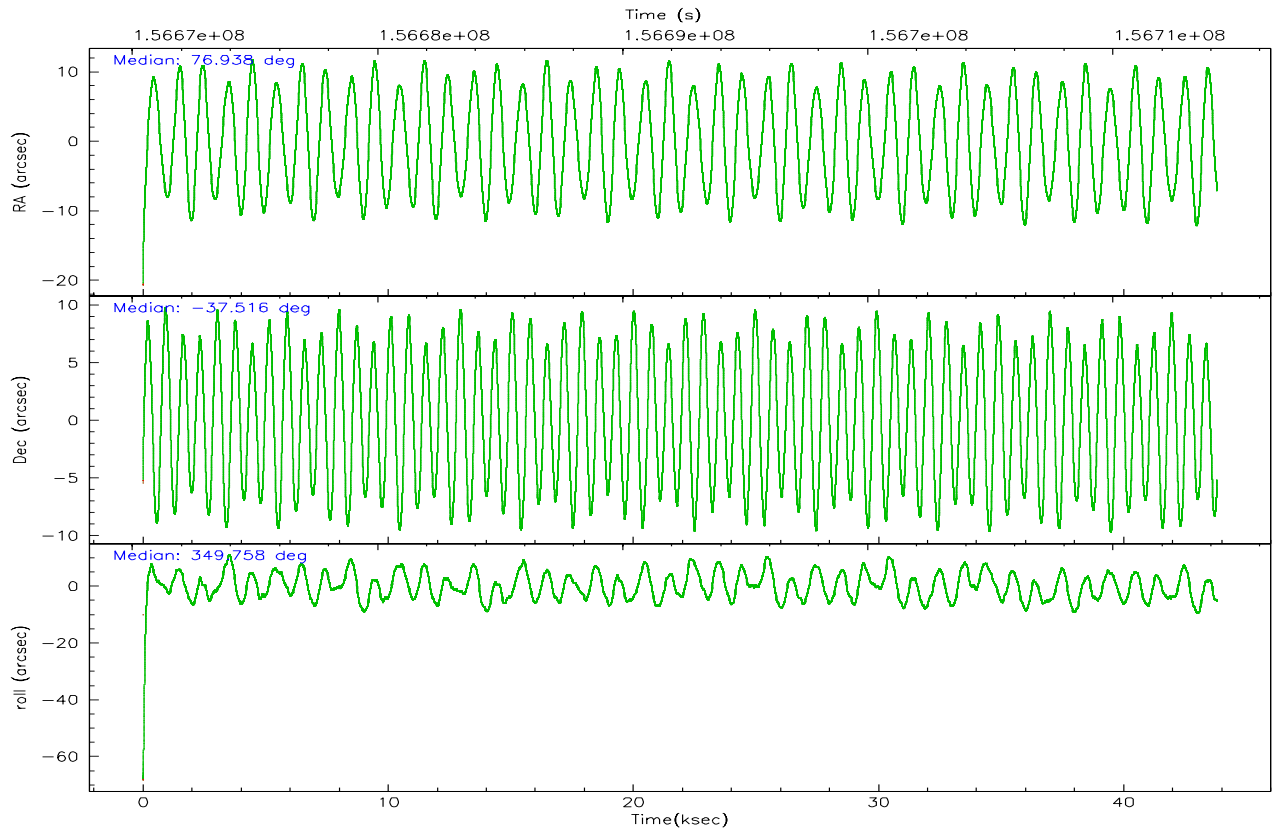
	ccd 2	ccd 3	ccd 5	ccd 6	ccd 7	ccd 8
grade 0 events	14129	14326	40215	14005	15118	22980
	5%	5%	9%	5%	4%	6%
grade 1 events	169	150	1743	127	209	210
	0%	0%	0%	0%	0%	0%
grade 2 events	6100	5647	57597	6379	37535	14715
	2%	2%	13%	2%	10%	4%
grade 3 events	2909	2857	4558	3041	8925	7616
	1%	1%	1%	1%	2%	2%
grade 4 events	2857	3029	4110	2992	8535	6955
	1%	1%	0%	1%	2%	2%
grade 5 events	9916	10887	22012	11805	22556	15148
	3%	4%	5%	4%	6%	4%
grade 6 events	5070	5164	96375	6184	81747	17368
	1%	2%	22%	2%	22%	5%
grade 7 events	221863	206079	195337	212852	188799	249169
	84%	83%	46%	82%	51%	74%

2.2 Compared Parameters

Parameter	Planned	Actual	Parameter	Planned	Actual
Instrument	ACIS	ACIS	Obspar format version number	6	6
Detector	ACIS-235678	ACIS-235678	Obspar file type	PREDICTED	ACTUAL
Grating	NONE	NONE	Obspar update status	NONE	UPDATED
Data mode	FAINT	FAINT	Number of optional ACIS chips dropped	0	0
Observation mode	POINTING	POINTING	On-chip summing requested	N	N
Pointing RA	76.905533	76.93766801604643	Subarray requested	NONE	NONE
Pointing Dec	-37.525696	-37.51613336432925	Alternating exposures requested	N	N
Pointing Roll	349.582007	349.7581934381458	Primary exposure time	0.000000	3.2
SIM focus pos (mm)	-0.684267	-0.6828225247311905			
SIM defocus (mm)	0	0.001444936568705701			
SIM translation stage pos (mm)	-190.132523	-190.1400660498719			
SIM translation stage offset (mm)	0	0.00754346686406393			
Observation start time	156670581.184000	156669596.79646			
Observation start date	2002-12-19T07:35:17	2002-12-19T07:19:56			
Observation end time	156714249.184000	156714564.06084			
Observation end date	2002-12-19T19:43:05	2002-12-19T19:49:24			
Read mode	TIMED	TIMED			

2.3 Aspect



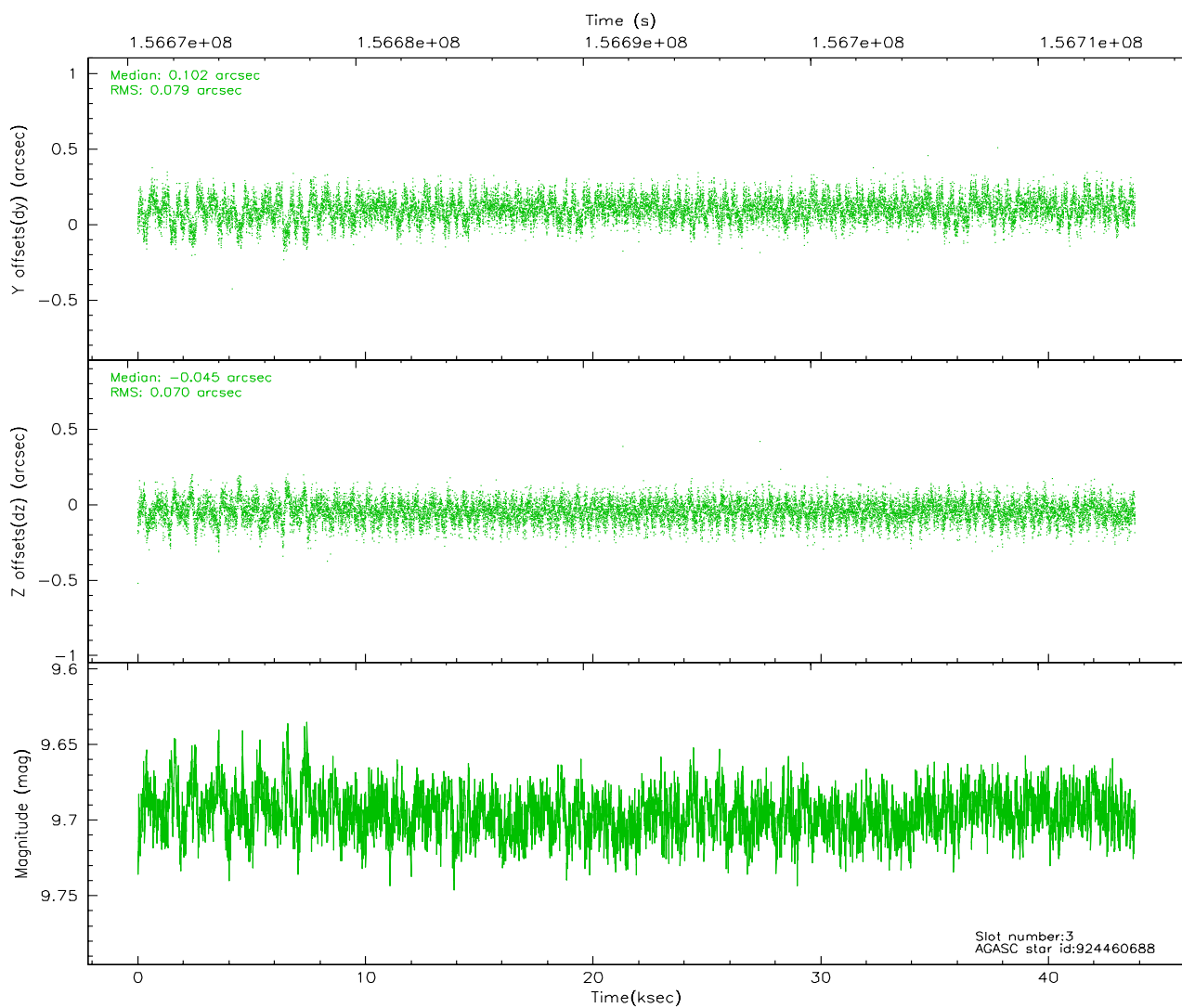
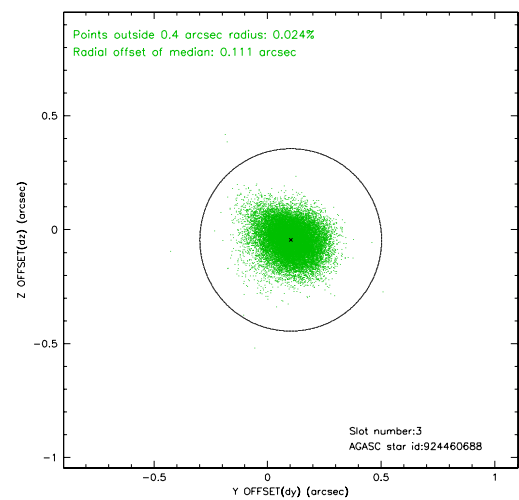
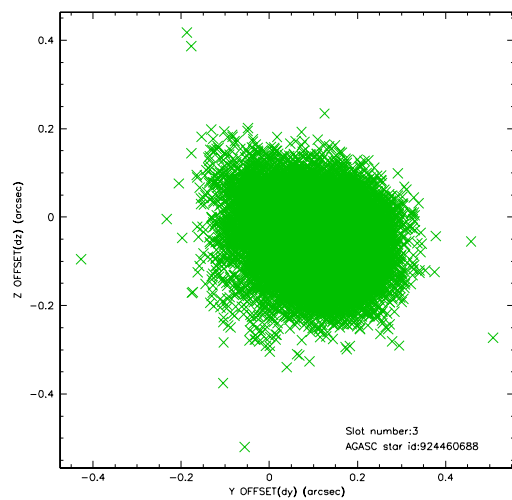


Slot Statistics

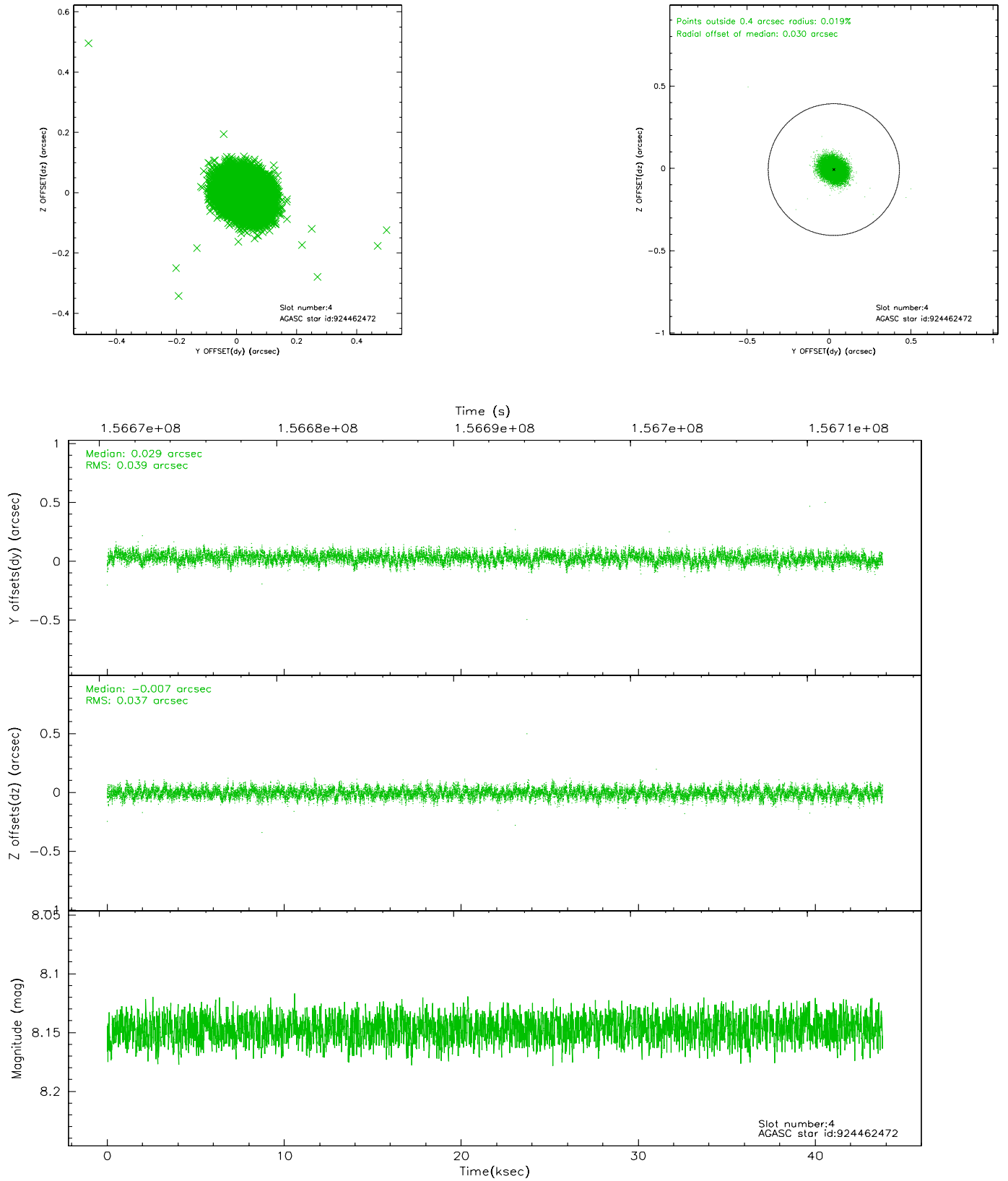
slot	status	id	mag	n_pts	med_dy	med_dz	dr1	dr2	ra	dec	mean_y	mean_z
0	FID	ACIS-S-2	7.12	10686	-0.013	0.017	0.007	0.012	0.000000	0.000000	-755.62	-1728.23
1	FID	ACIS-S-4	7.20	10686	-0.035	0.002	0.008	0.013	0.000000	0.000000	2157.62	180.25
2	FID	ACIS-S-5	7.24	10686	0.017	-0.010	0.008	0.013	0.000000	0.000000	-1808.44	173.89
3	GUIDE	924460688	9.70	21162	0.102	-0.045	0.112	0.185	76.282167	-37.143685	-2006.68	1023.13
4	GUIDE	924462472	8.15	21373	0.029	-0.007	0.057	0.091	76.716656	-37.187120	-752.91	1100.15
5	GUIDE	994457640	9.34	21367	-0.079	-0.052	0.124	0.202	76.557826	-38.140083	-567.87	-2355.51
6	GUIDE	994576336	9.54	21353	0.029	0.033	0.105	0.166	77.636285	-37.790332	2218.69	-569.30
7	GUIDE	994576496	9.94	21284	-0.078	0.067	0.121	0.198	77.642425	-37.775924	2226.89	-515.07

2.4 Star Slots

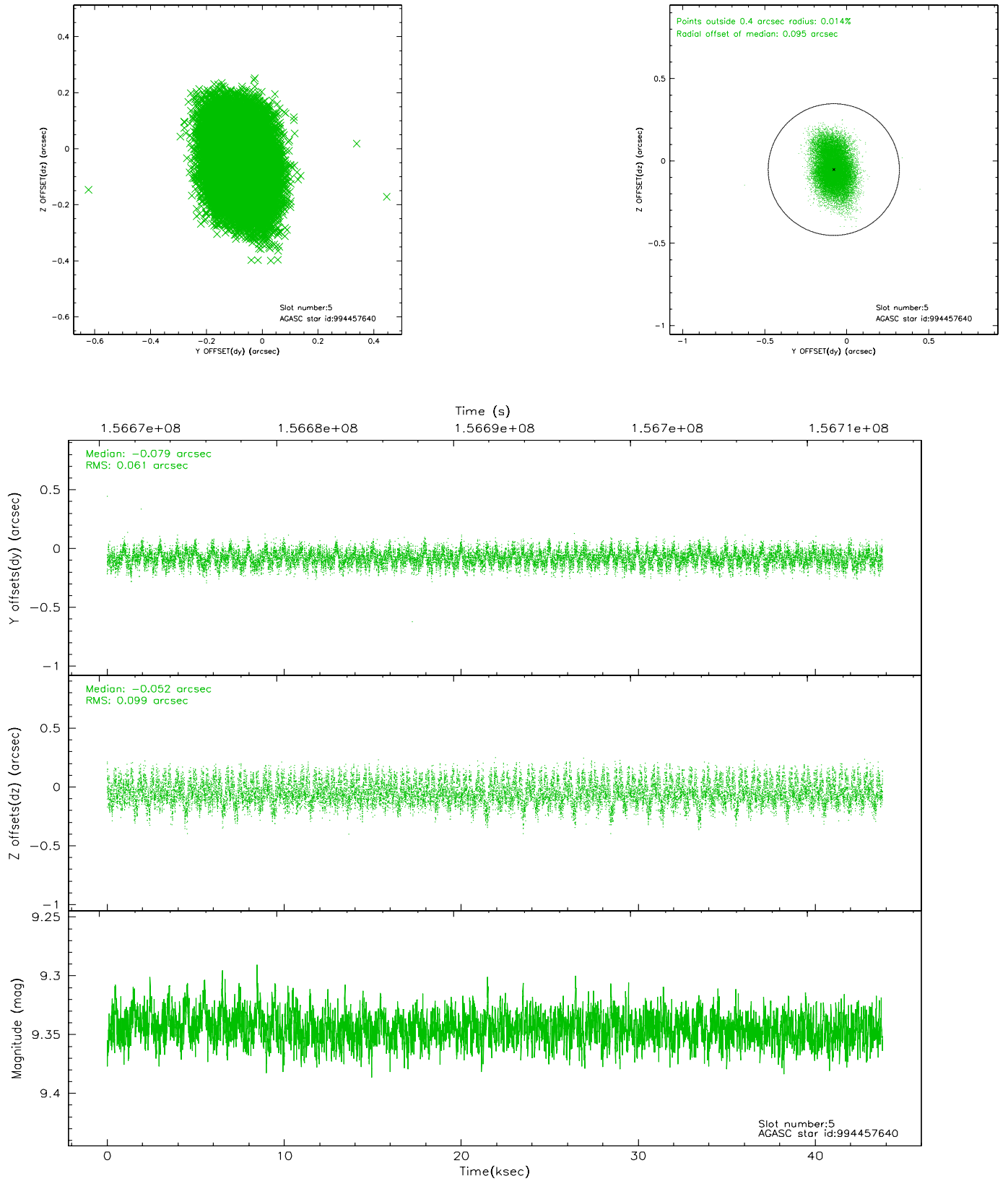
2.4.1 Slot 3



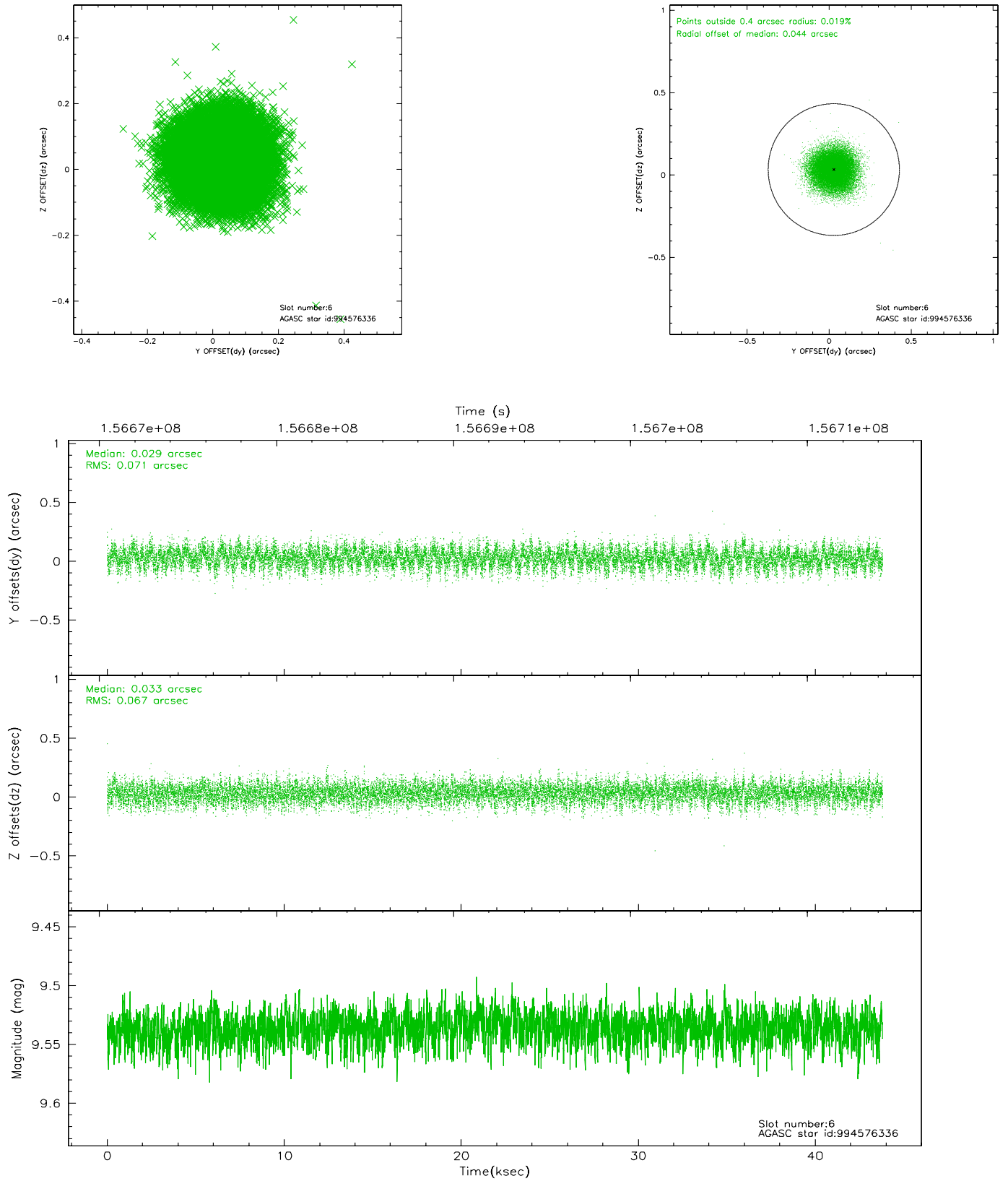
2.4.2 Slot 4



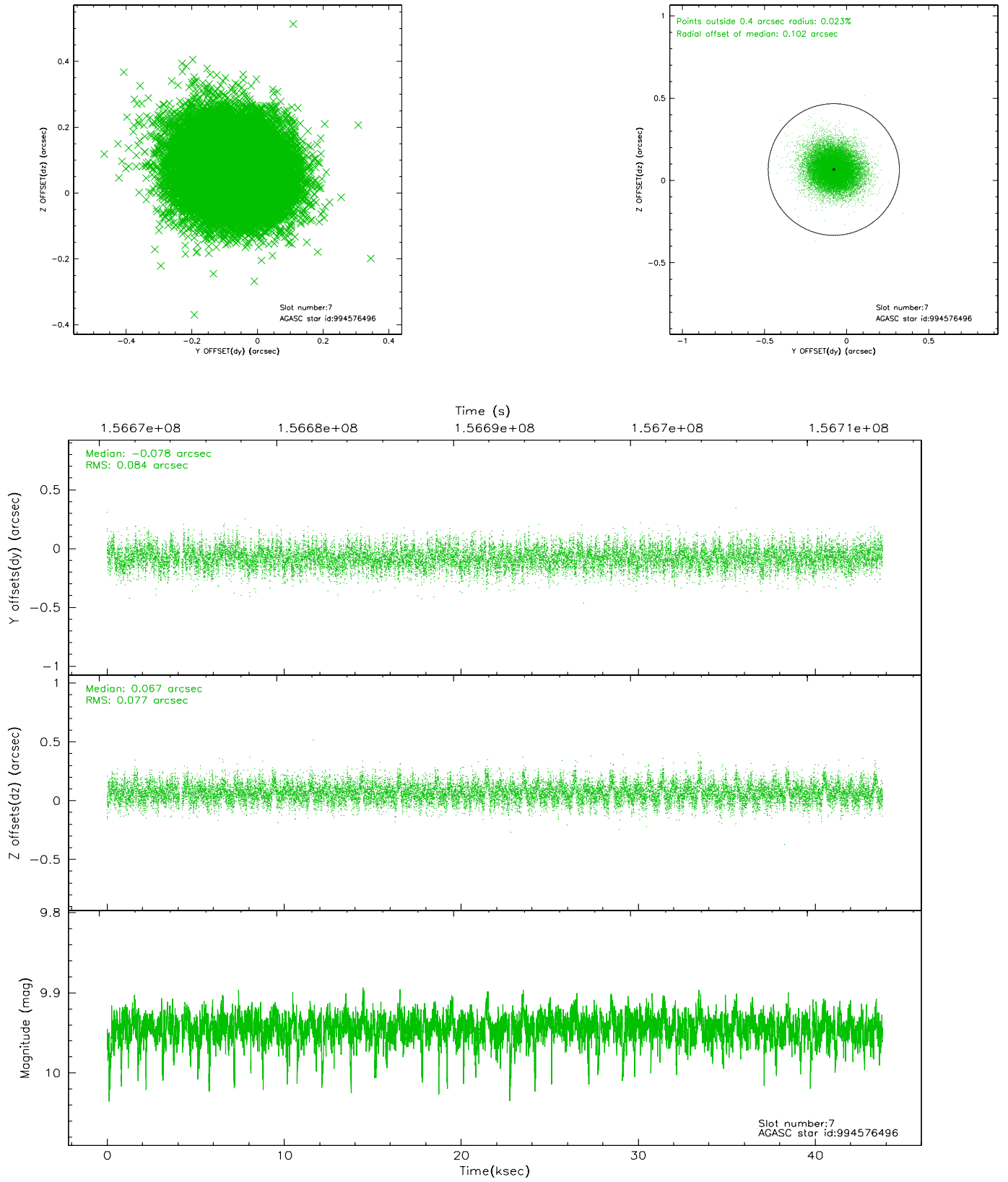
2.4.3 Slot 5



2.4.4 Slot 6

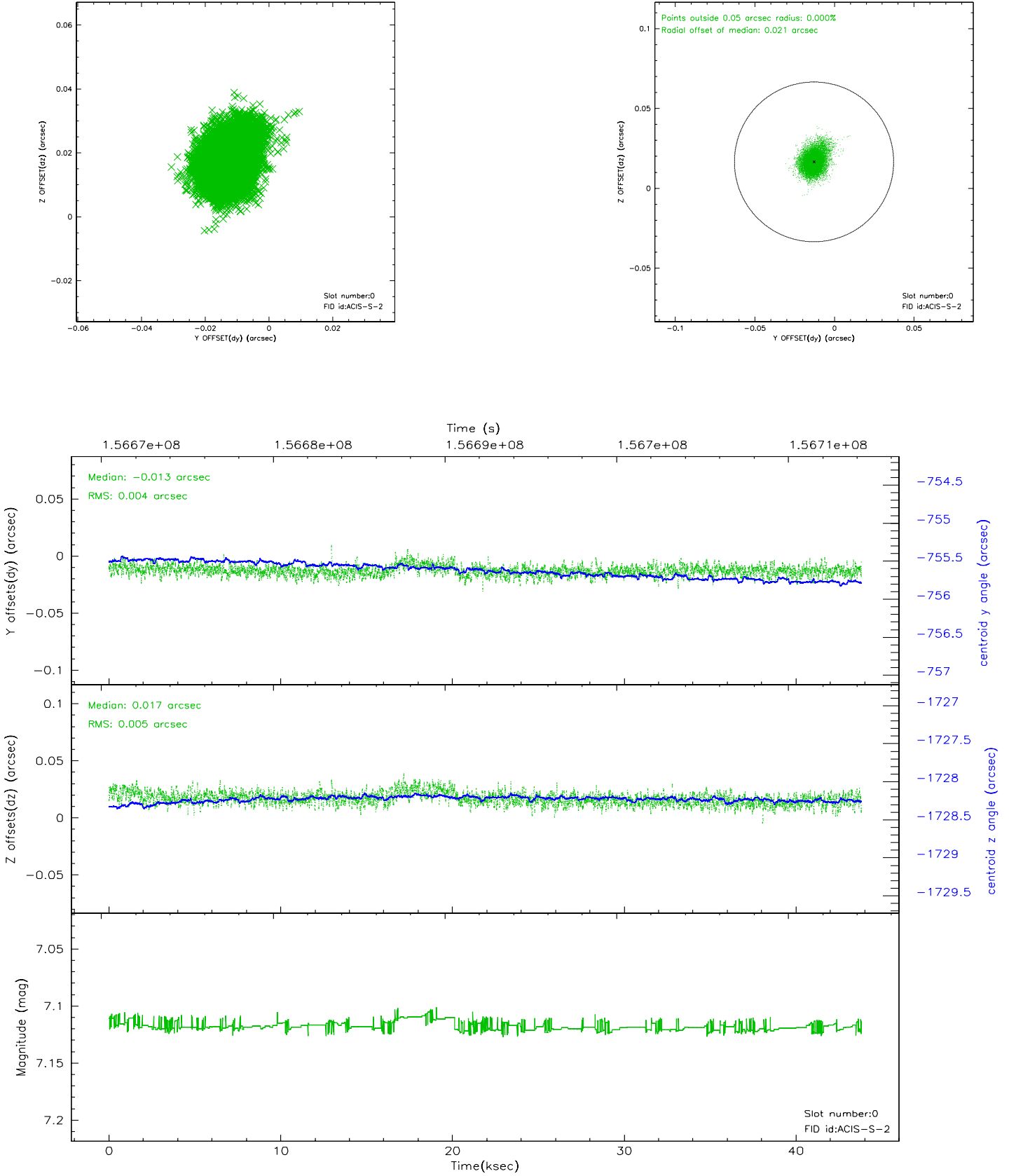


2.4.5 Slot 7

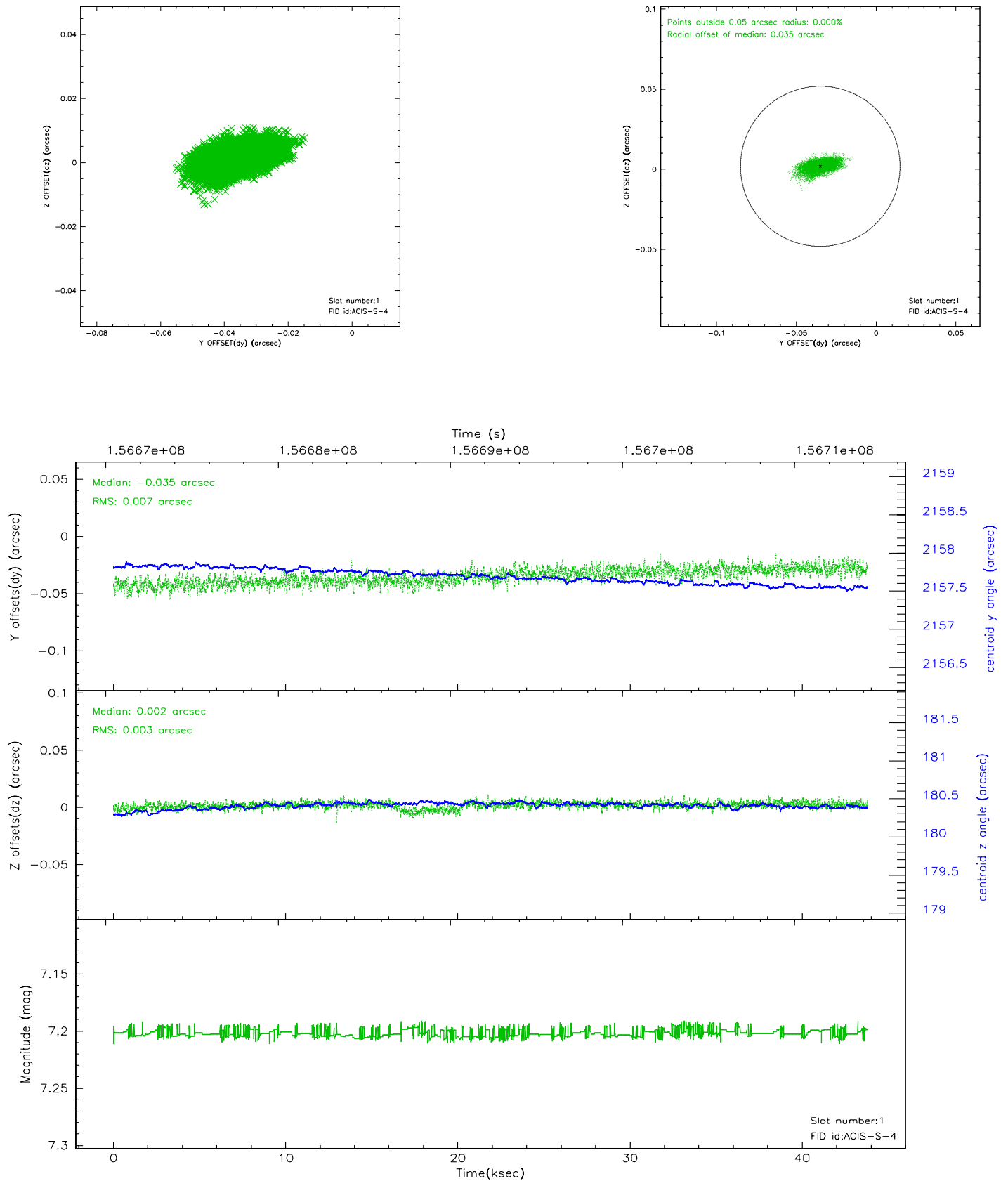


2.5 FID Slots

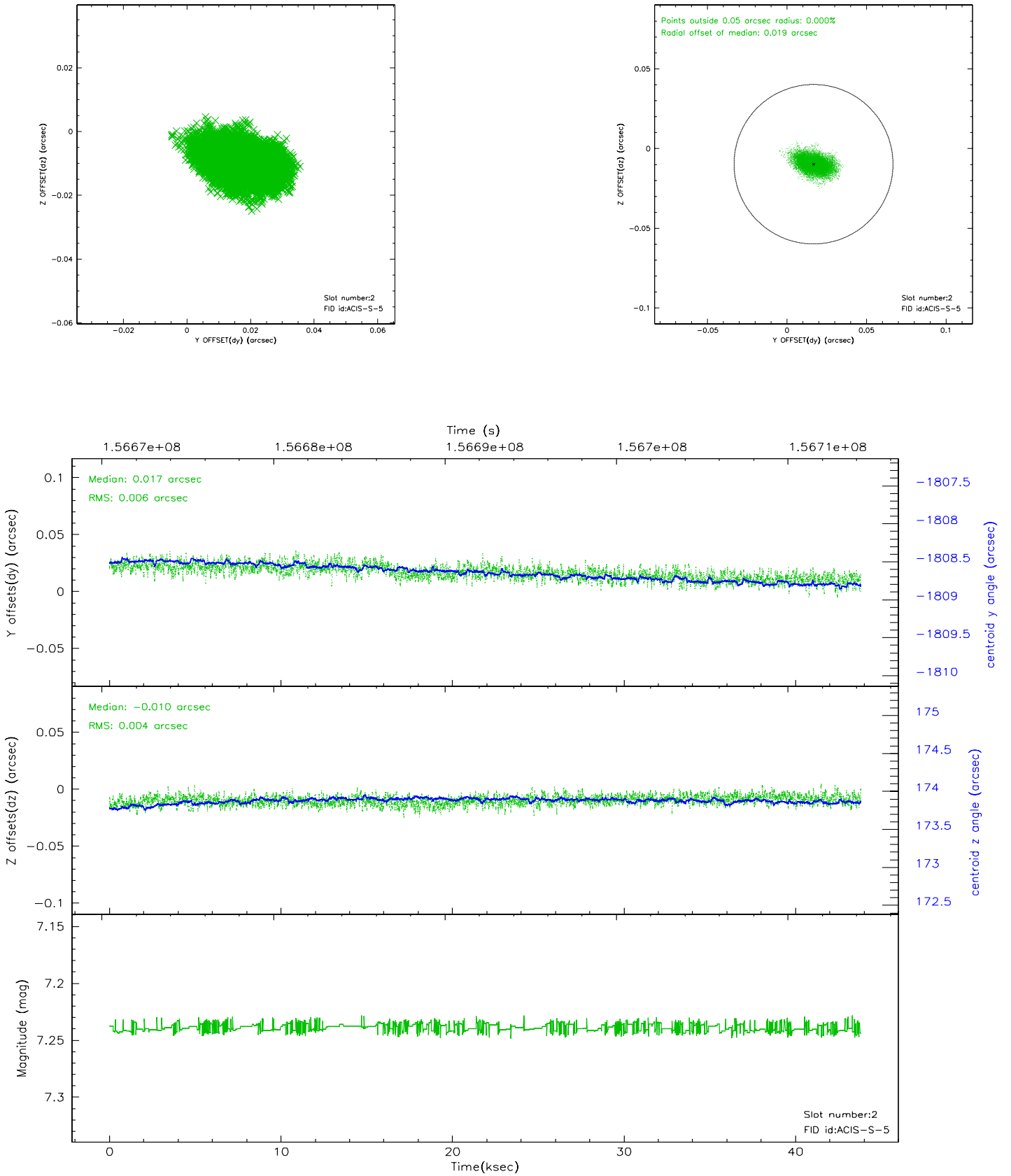
2.5.1 Slot 0



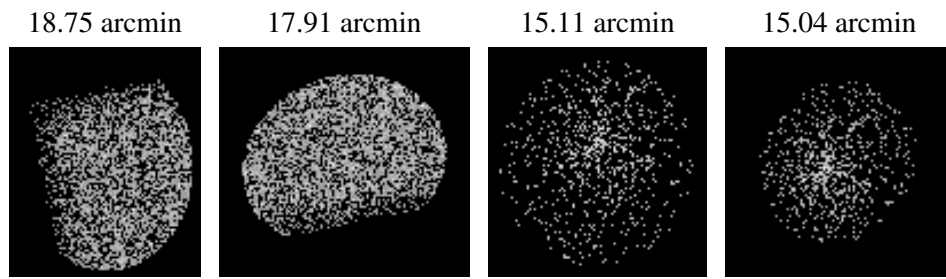
2.5.2 Slot 1



2.5.3 Slot 2



3 Point Sources



A Summary

A.1 Status

V&V Scientist	Beth Sundheim
V&V Date (YYYY-MM-DD)	2006.10.16
V&V Edition	1
V&V Disposition and Status	OK
V&V Charge Time	43.43

A.2 Comments