

V&V Reference Report

L2 ASCDS Version : 8.4.5

Observation 3002 - L2 Version 4
Chandra X-Ray Center

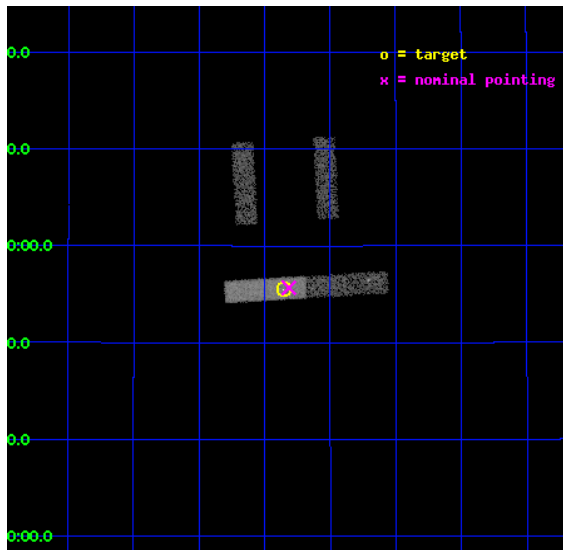
L2 Processing Date : Oct 4 2012

Contents

1	Front	2
2	OBI	3
2.1	OBI	3
2.1.1	Images	3
2.1.2	Bias	3
2.1.3	Parameters	4
2.1.4	Events	4
2.2	Compared Parameters	5
2.3	Aspect	6
2.4	Star Slots	9
2.4.1	Slot 3	9
2.4.2	Slot 4	10
2.4.3	Slot 5	11
2.4.4	Slot 6	12
2.4.5	Slot 7	13
2.5	FID Slots	14
2.5.1	Slot 0	14
2.5.2	Slot 1	15
2.5.3	Slot 2	16
A	Summary	17
A.1	Status	17
A.2	Comments	17

1 Front

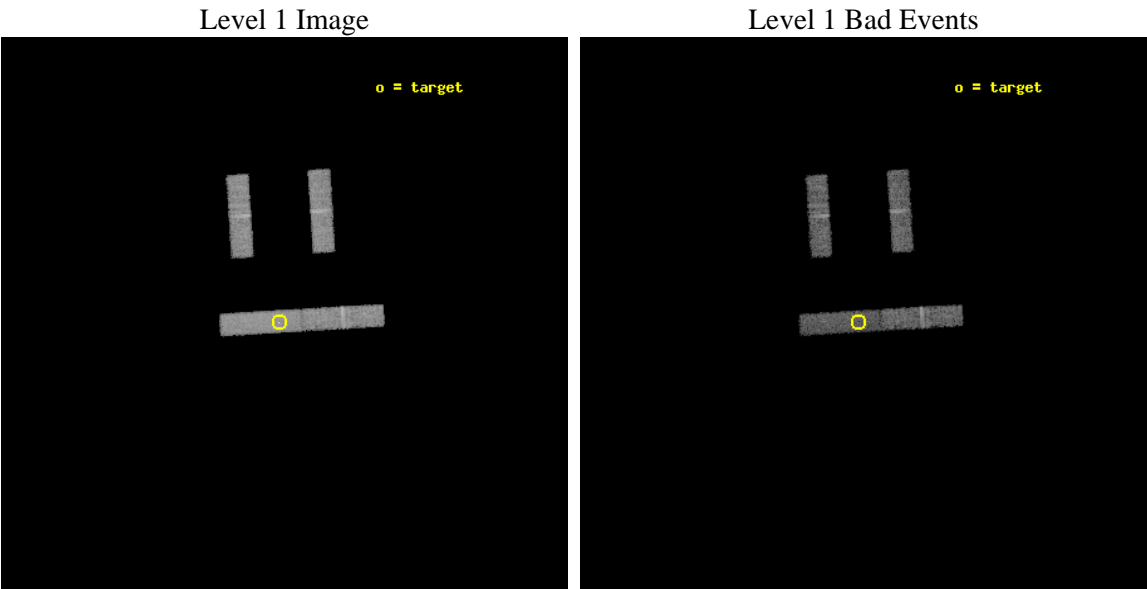
seq_num	700441	Sequence number
obs_id	3002	Observation id
title	CHANDRA SNAPSHOT OBSERVATIONS OF SOFT X-RAY TRANSIENT AGN	Proposal
observer	Dr Rick Edelson	Principal investigator
object	RX J1258+23	Source name
dtcycle	0	
cycle	P	events from which exps? Prim/Second/Both
ra_targ	194.714167	Observer's specified target RA [deg]
dec_targ	23.925556	Observer's specified target Dec [deg]
ra_nom	194.70384801104	Nominal RA [deg]
dec_nom	23.927830559842	Nominal Dec [deg]
roll_nom	176.52762624549	Nominal Roll [deg]
revision	4	Processing version of data
ontime	10658.555672109	Sum of GTIs [s]
livetime	10238.372850332	Livetime [s]
ontime2	10659.473572195	Sum of GTIs [s]
ontime3	10658.473592132	Sum of GTIs [s]
ontime6	10659.555652201	Sum of GTIs [s]
ontime7	10658.555672109	Sum of GTIs [s]
l2events	16588	Number of level 2 events



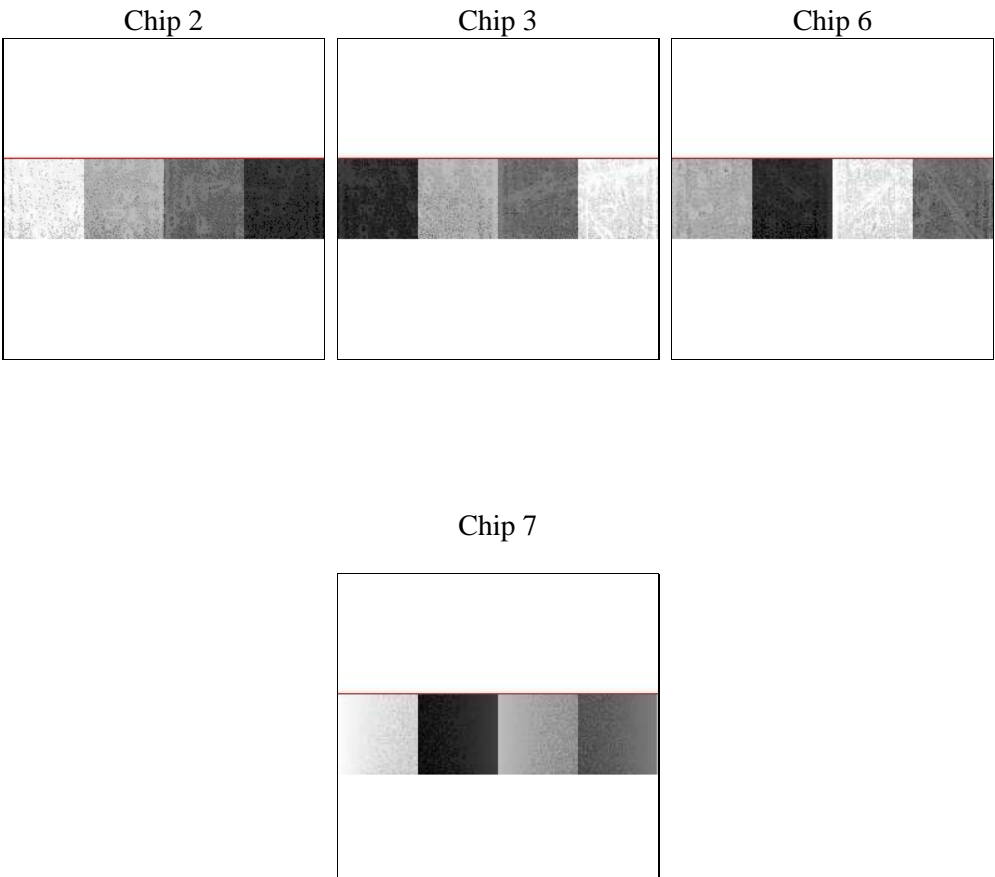
2 OBI

2.1 OBI

2.1.1 Images



2.1.2 Bias



Chip 7



2.1.3 Parameters

obi_num	1	Obi number	sched_exp_time	10000.000000	[s] Scheduled observation exposure time
ascdsver	8.4.5	Processing system revision	ontime	10658.555672109	Sum of GTIs [s]
caldsver	4.5.2	 	ontime2	10659.473572195	Sum of GTIs [s]
date	2012-10-04T18:08:09	Date and time of file creation	ontime3	10658.473592132	Sum of GTIs [s]
revision	4	Processing version of data	ontime6	10659.555652201	Sum of GTIs [s]
			ontime7	10658.555672109	Sum of GTIs [s]
			l1events	86461	Number of level 1 events

2.1.4 Events

	ccd 2	ccd 3	ccd 6	ccd 7
level 1 events	20506	20456	21113	24386
rejected events	18242	18158	18679	13168
rejected %	88%	88%	88%	53%

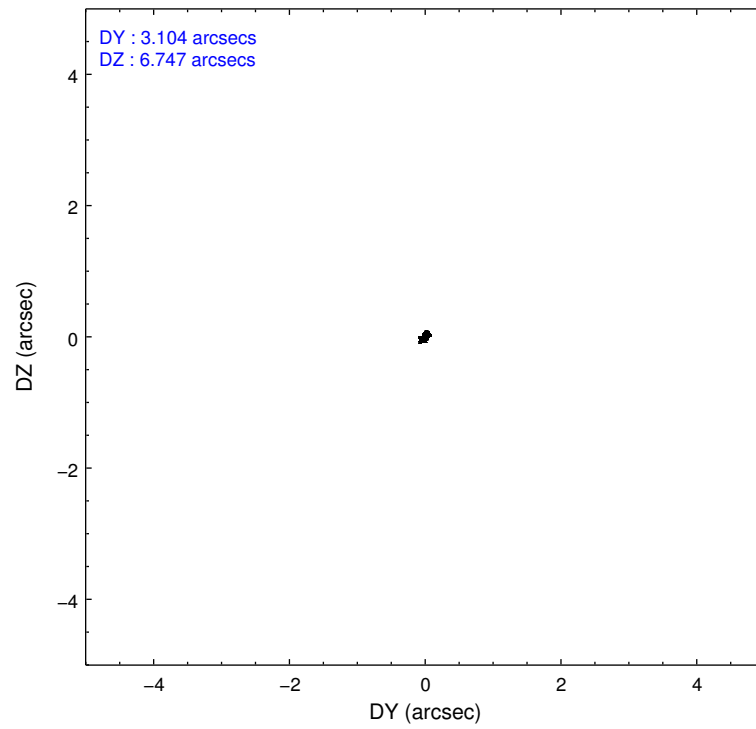
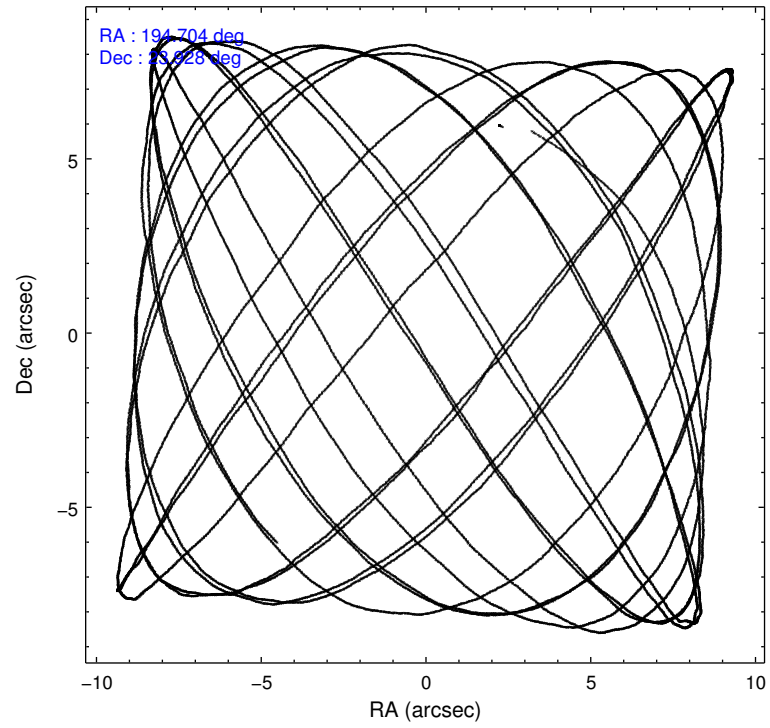
	ccd 2	ccd 3	ccd 6	ccd 7
grade 0 events	802	872	887	1483
	3%	4%	4%	6%
grade 1 events	5	10	8	27
	0%	0%	0%	0%
grade 2 events	396	414	441	2267
	1%	2%	2%	9%
grade 3 events	318	327	358	1173
	1%	1%	1%	4%
grade 4 events	370	293	332	1170
	1%	1%	1%	4%
grade 5 events	623	671	796	2161
	3%	3%	3%	8%
grade 6 events	378	392	416	5126
	1%	1%	1%	21%
grade 7 events	17614	17477	17875	10979
	85%	85%	84%	45%

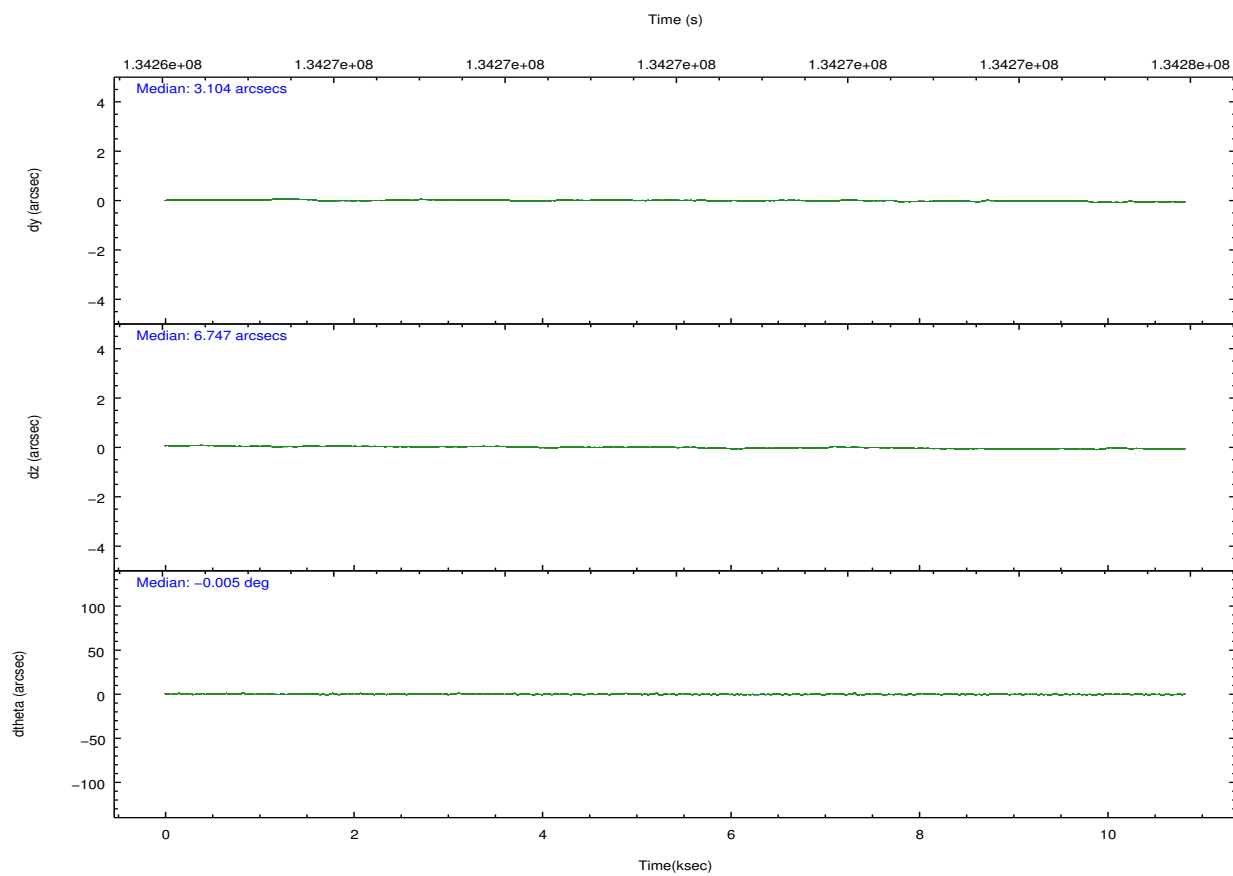
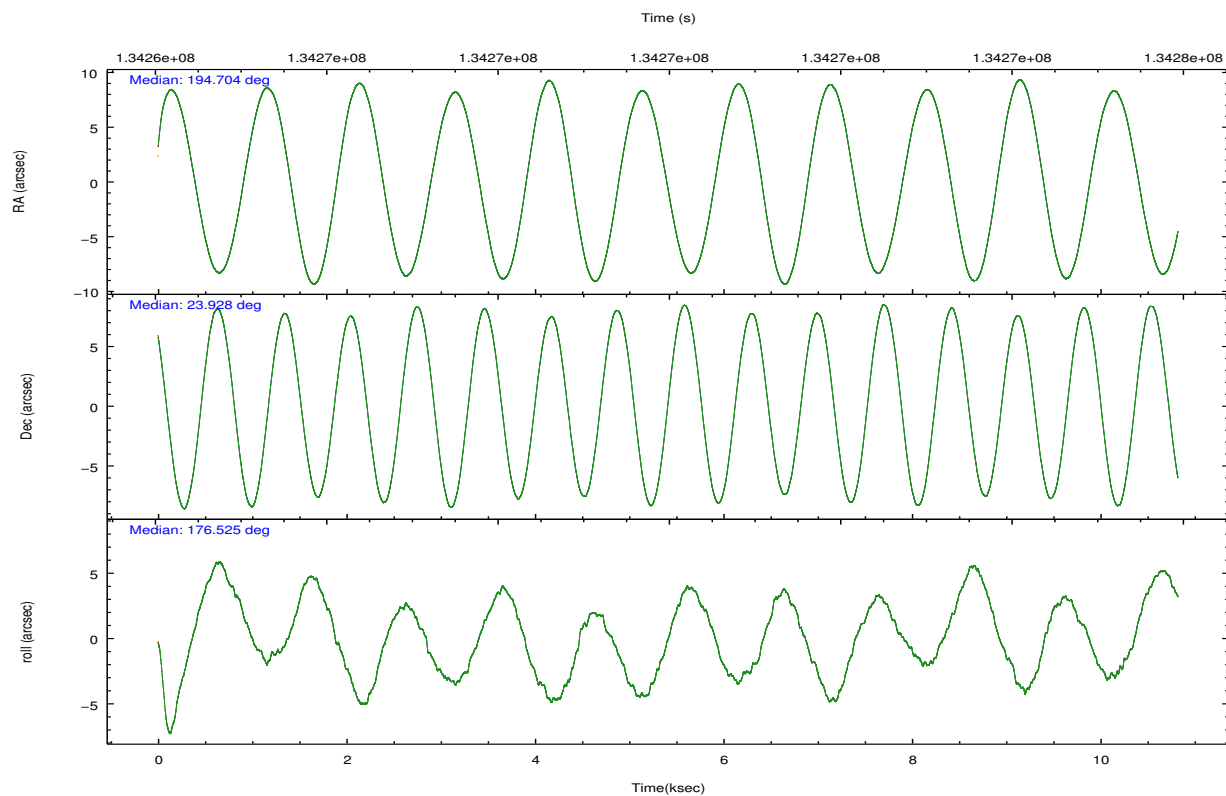
2.2 Compared Parameters

Parameter	Planned	Actual
Instrument	ACIS	ACIS
Detector	ACIS-2367	ACIS-2367
Grating	NONE	NONE
Data mode	FAINT	FAINT
Observation mode	POINTING	POINTING
[deg] Pointing RA	194.730353	194.7038480110393
[deg] Pointing Dec	23.940316	23.92783055984203
[deg] Pointing Roll	176.360242	176.5276262454859
[mm] SIM focus pos	-0.684267	-0.6828225247311905
[mm] SIM defocus	0	0.001444936568705701
[mm] SIM translation stage pos	-190.132523	-190.1400660498719
[mm] SIM translation stage offset	0	0.00754346686406393
[s] Observation start time (MET)	134265391.184000	134264119.8487
Observation start date	2002-04-03T23:55:27	2002-04-03T23:35:19
[s] Observation end time (MET)	134275391.184000	134275525.53667
Observation end date	2002-04-04T02:42:07	2002-04-04T02:45:25
Read mode	TIMED	TIMED

Parameter	Planned	Actual
Obspar format version number	7	7
Obspar file type	PREDICTED	ACTUAL
Obspar update status	NONE	UPDATED
Number of optional ACIS chips dropped	0	0
On-chip summing requested	N	N
Subarray requested	CUSTOM	1/4
Subarray start row	385	385
Subarray row count	256	256
Alternating exposures requested	N	N
[s] Primary exposure time	0.000000	1

2.3 Aspect



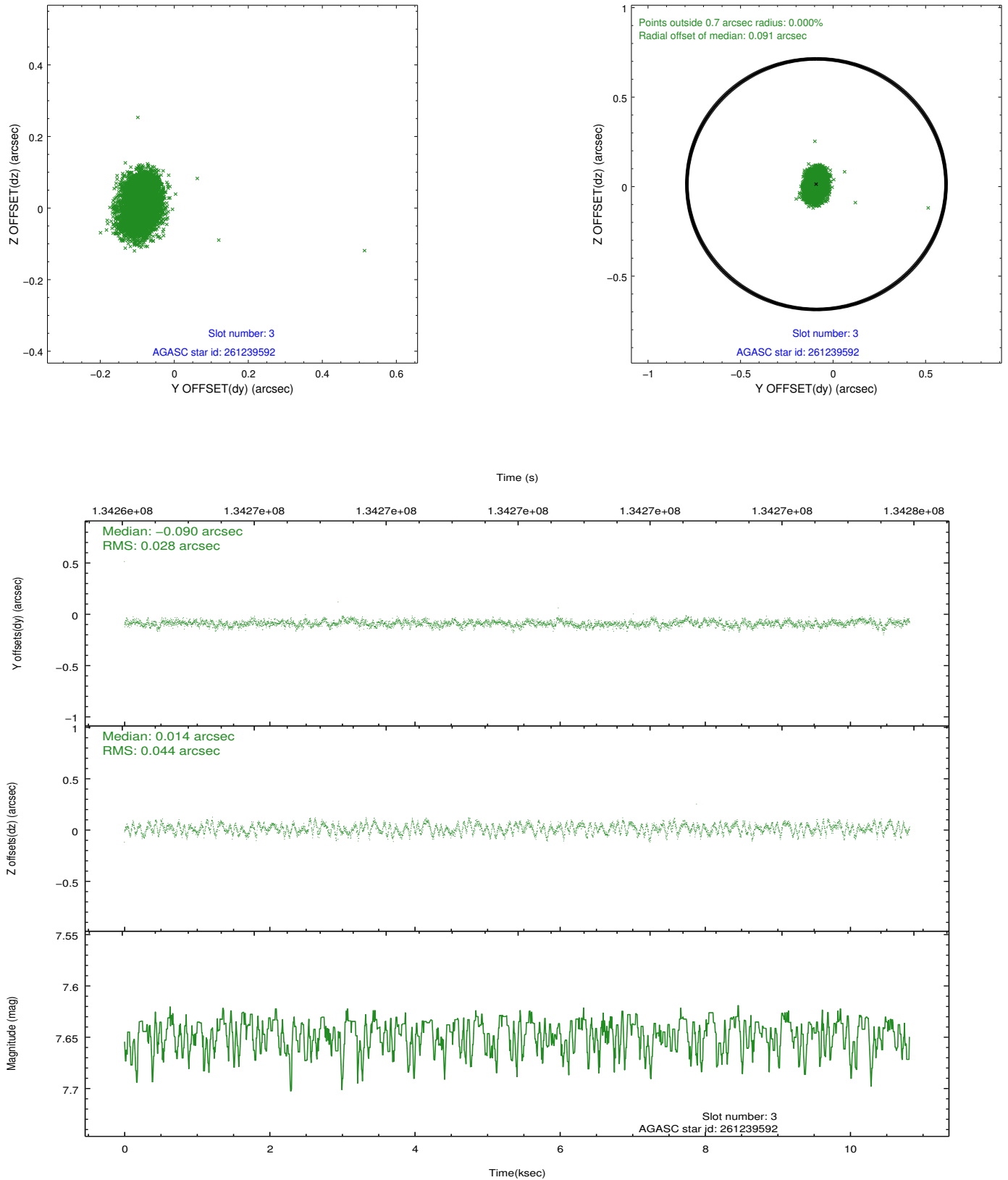


Slot Statistics

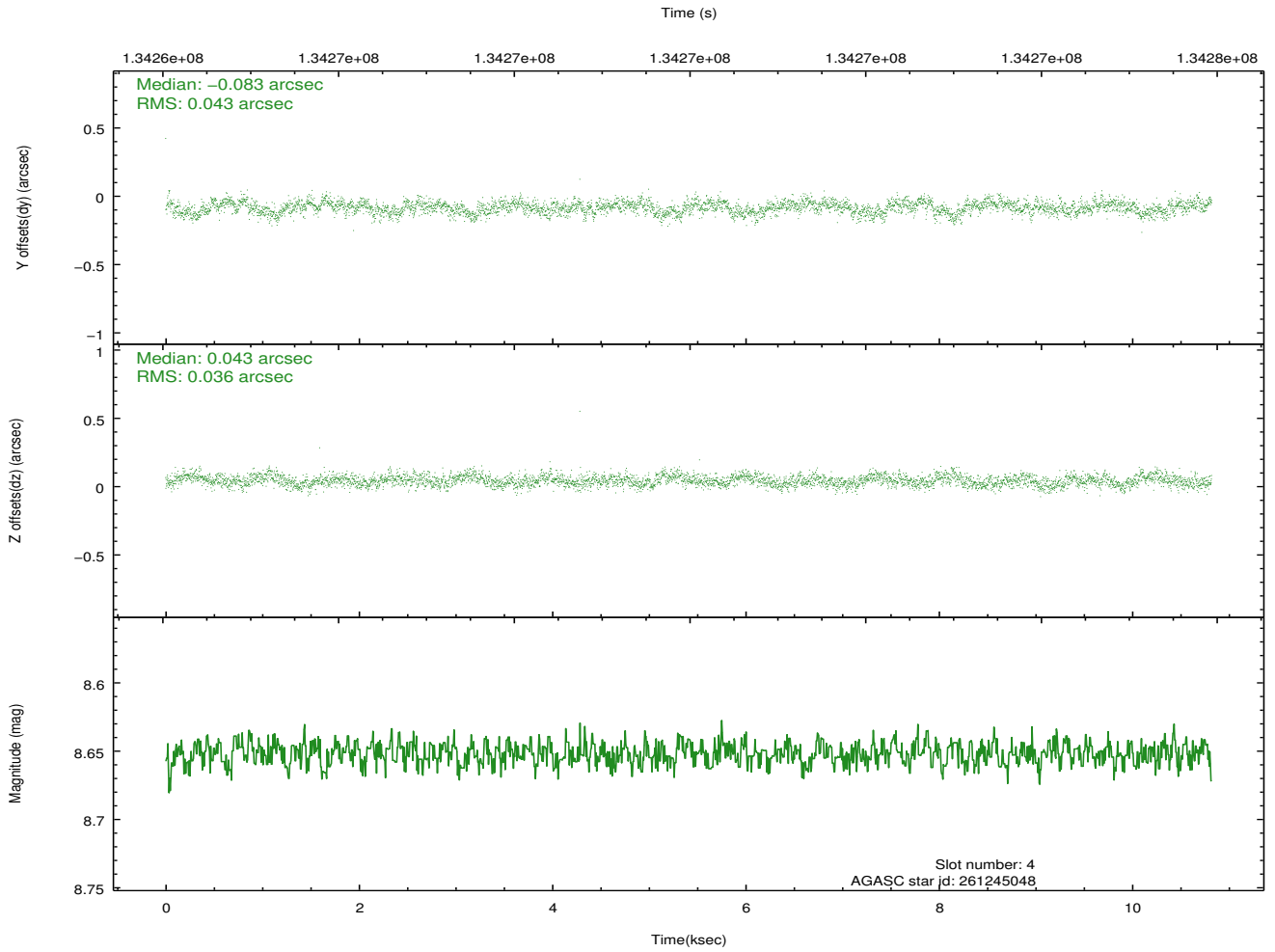
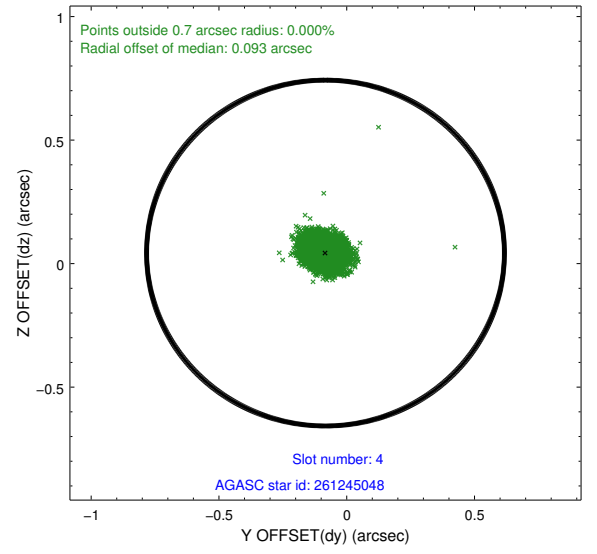
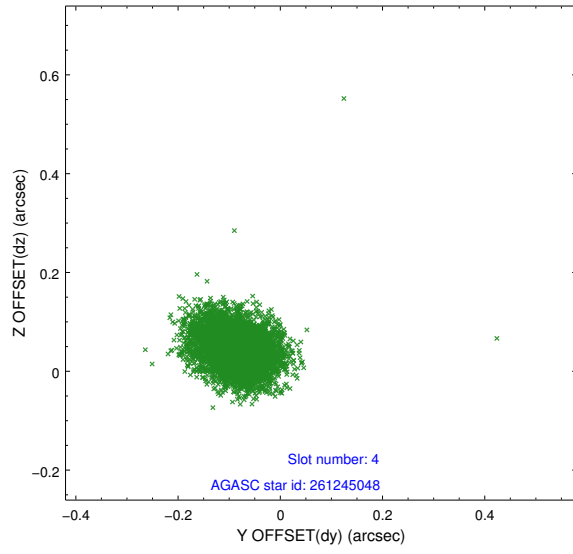
slot	status	id	mag	n_pts	med_dy	med_dz	dr1	dr2	ra	dec	mean_y	mean_z
0	FID	ACIS-S-2	7.12	2640	-0.021	0.007	0.007	0.011	0.000000	0.000000	-755.75	-1727.90
1	FID	ACIS-S-4	7.20	2639	-0.020	0.008	0.005	0.010	0.000000	0.000000	2157.29	180.12
2	FID	ACIS-S-5	7.24	2639	0.010	-0.007	0.007	0.011	0.000000	0.000000	-1807.96	174.28
3	GUIDE	261239592	7.65	5278	-0.090	0.014	0.054	0.087	195.264873	24.316318	-1663.78	-1465.21
4	GUIDE	261245048	8.65	5276	-0.083	0.043	0.058	0.096	194.015631	23.574141	2270.00	1459.63
5	GUIDE	261243888	8.43	5277	0.033	0.014	0.068	0.112	195.146571	23.651749	-1434.96	948.20
6	GUIDE	261237448	9.03	5276	-0.058	0.056	0.073	0.117	194.252940	24.397499	1666.74	-1545.26
7	GUIDE	261247520	9.56	5274	0.202	-0.126	0.084	0.140	195.028104	23.710956	-1031.12	760.57

2.4 Star Slots

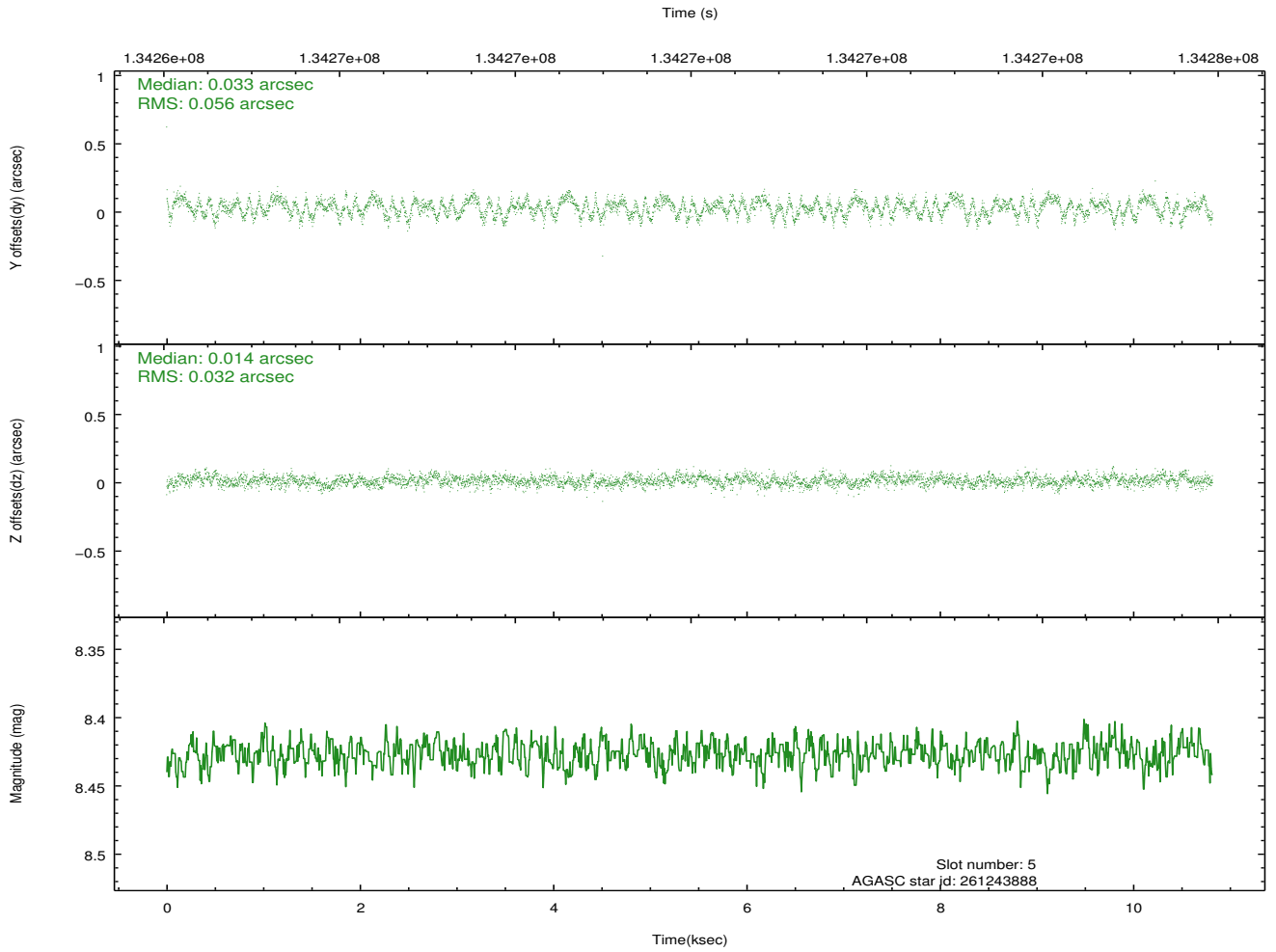
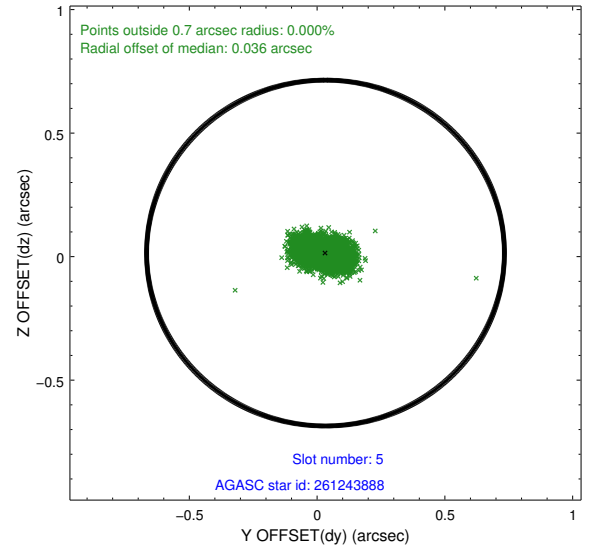
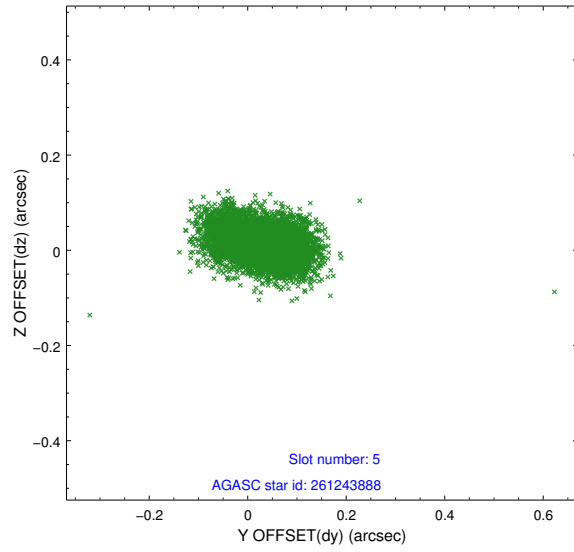
2.4.1 Slot 3



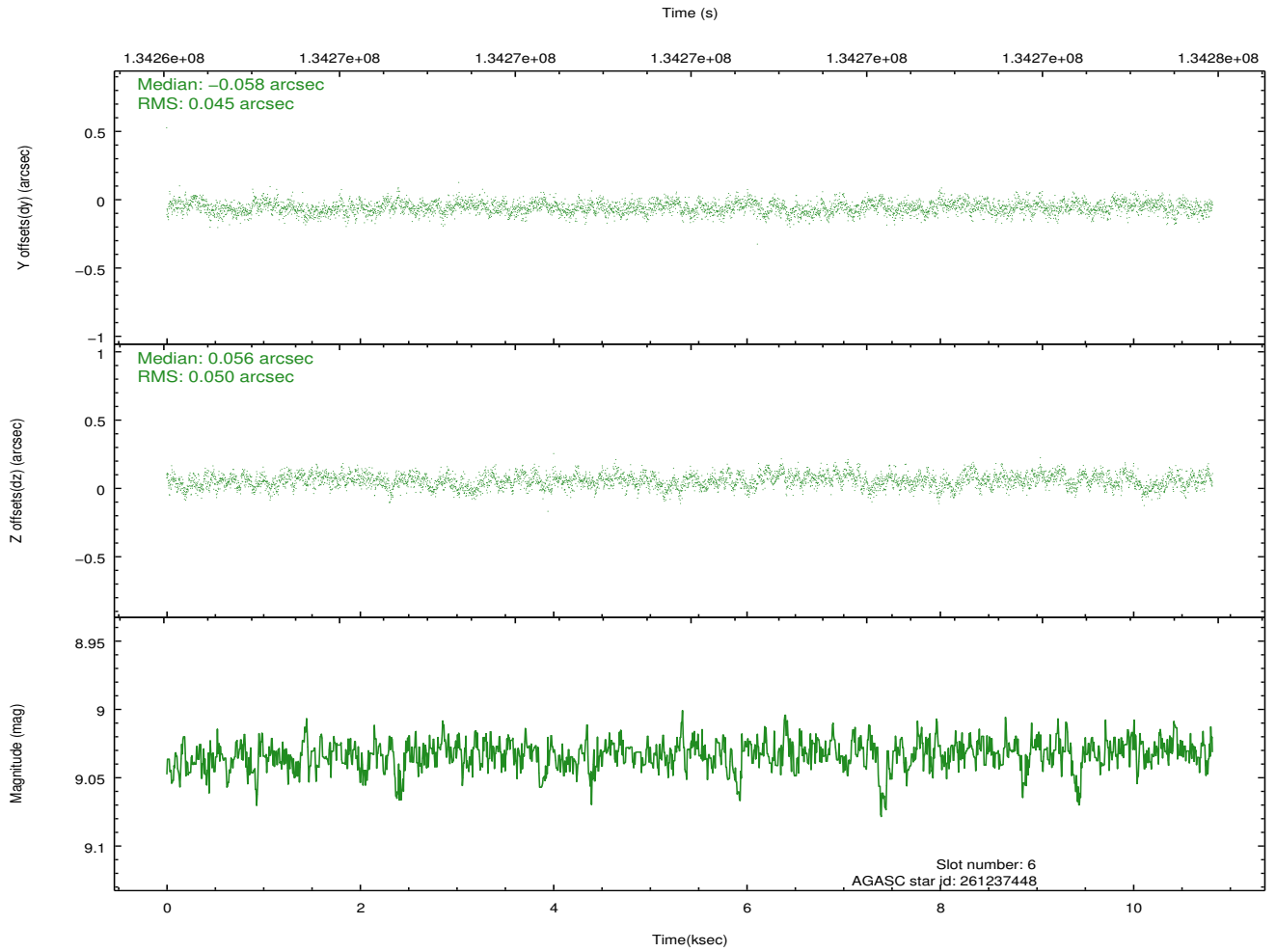
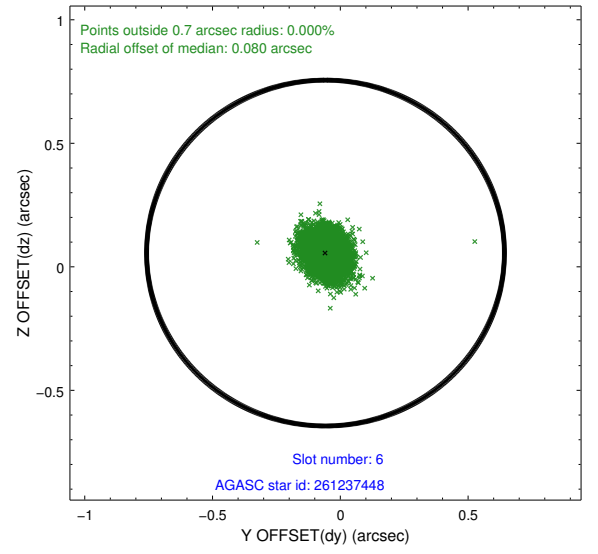
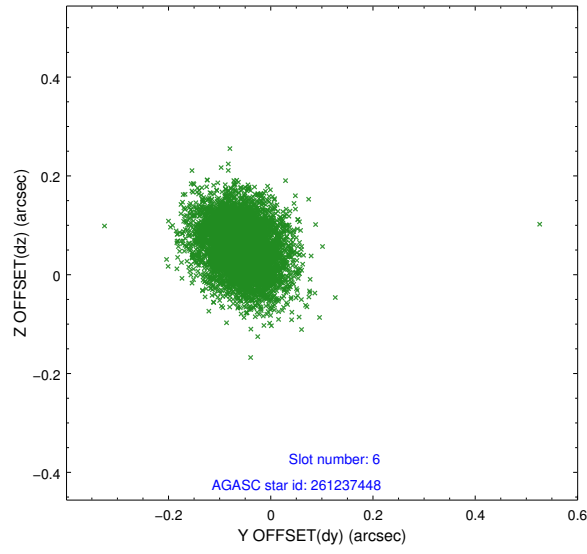
2.4.2 Slot 4



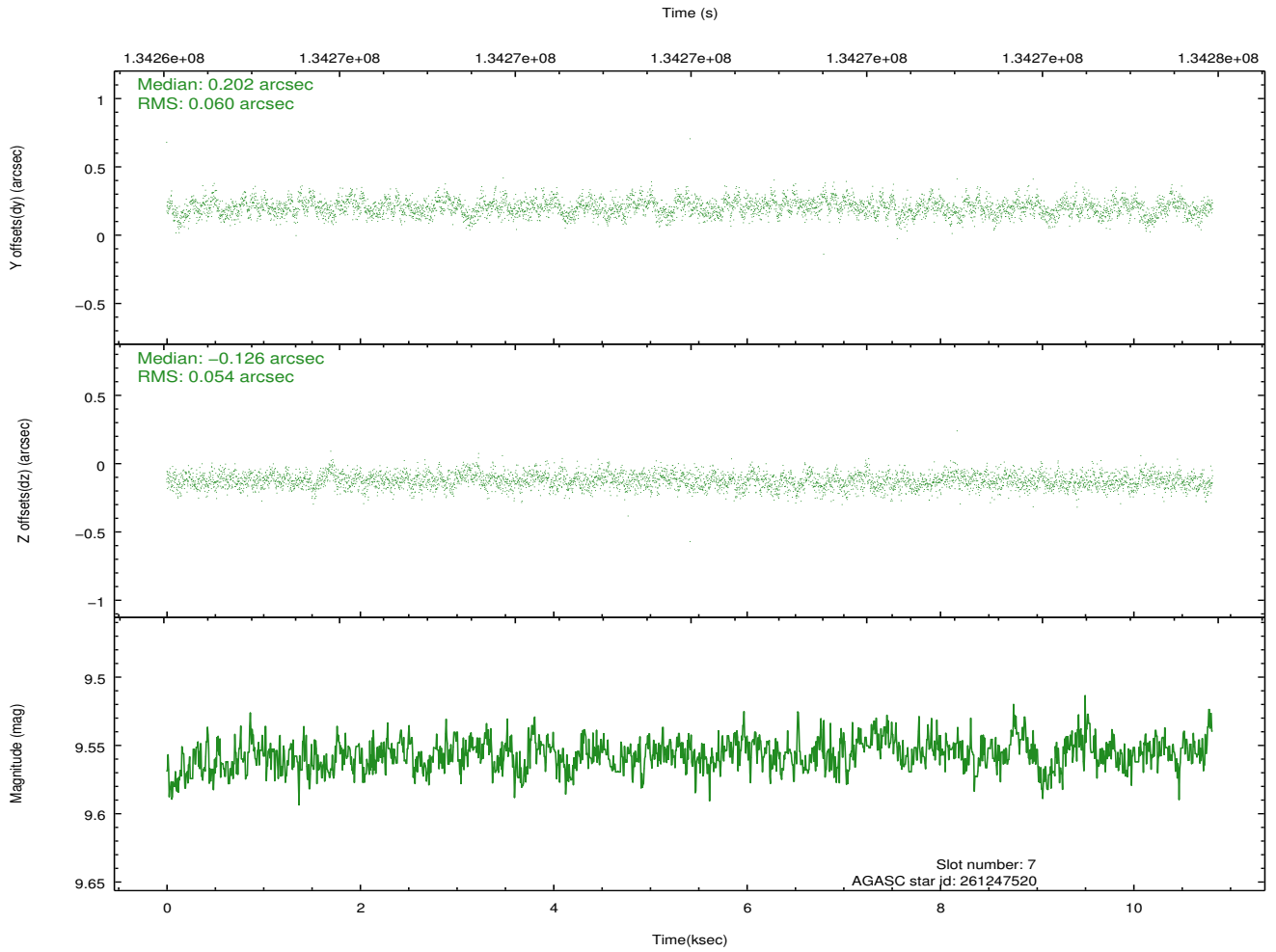
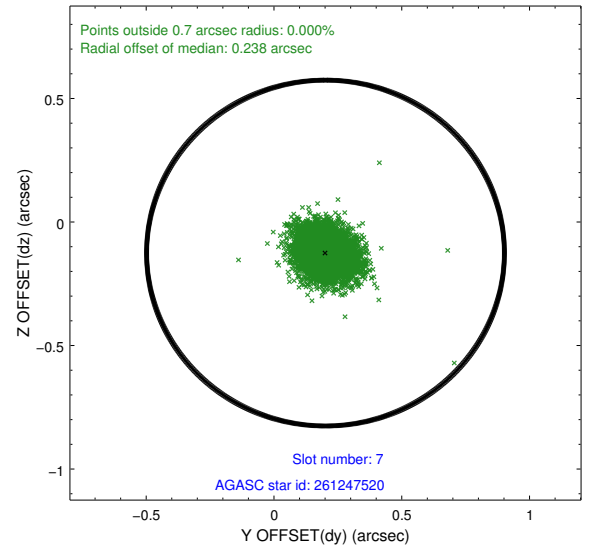
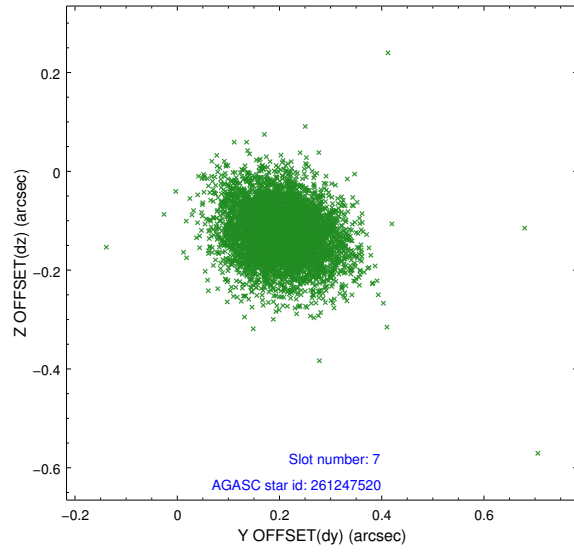
2.4.3 Slot 5



2.4.4 Slot 6

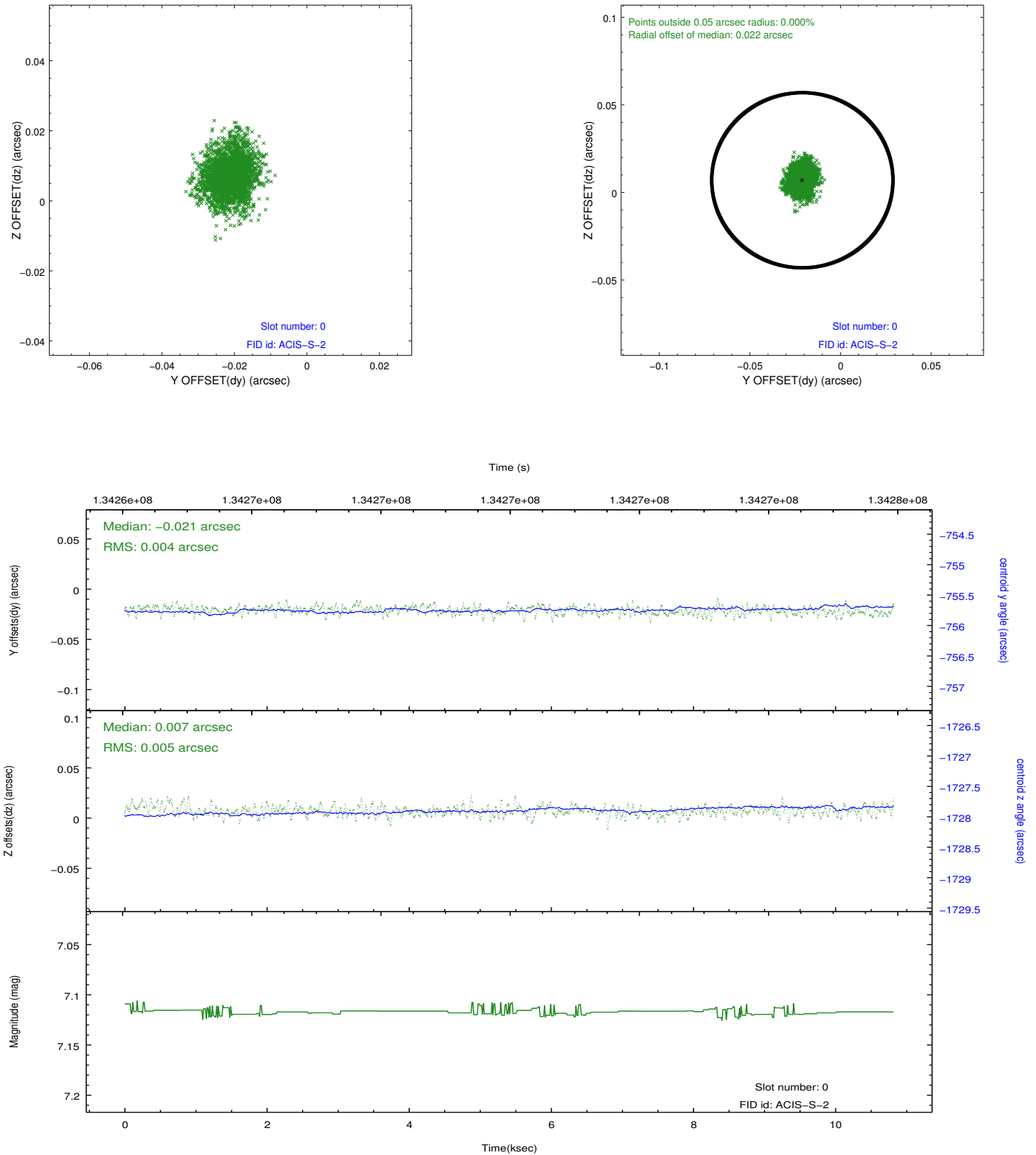


2.4.5 Slot 7

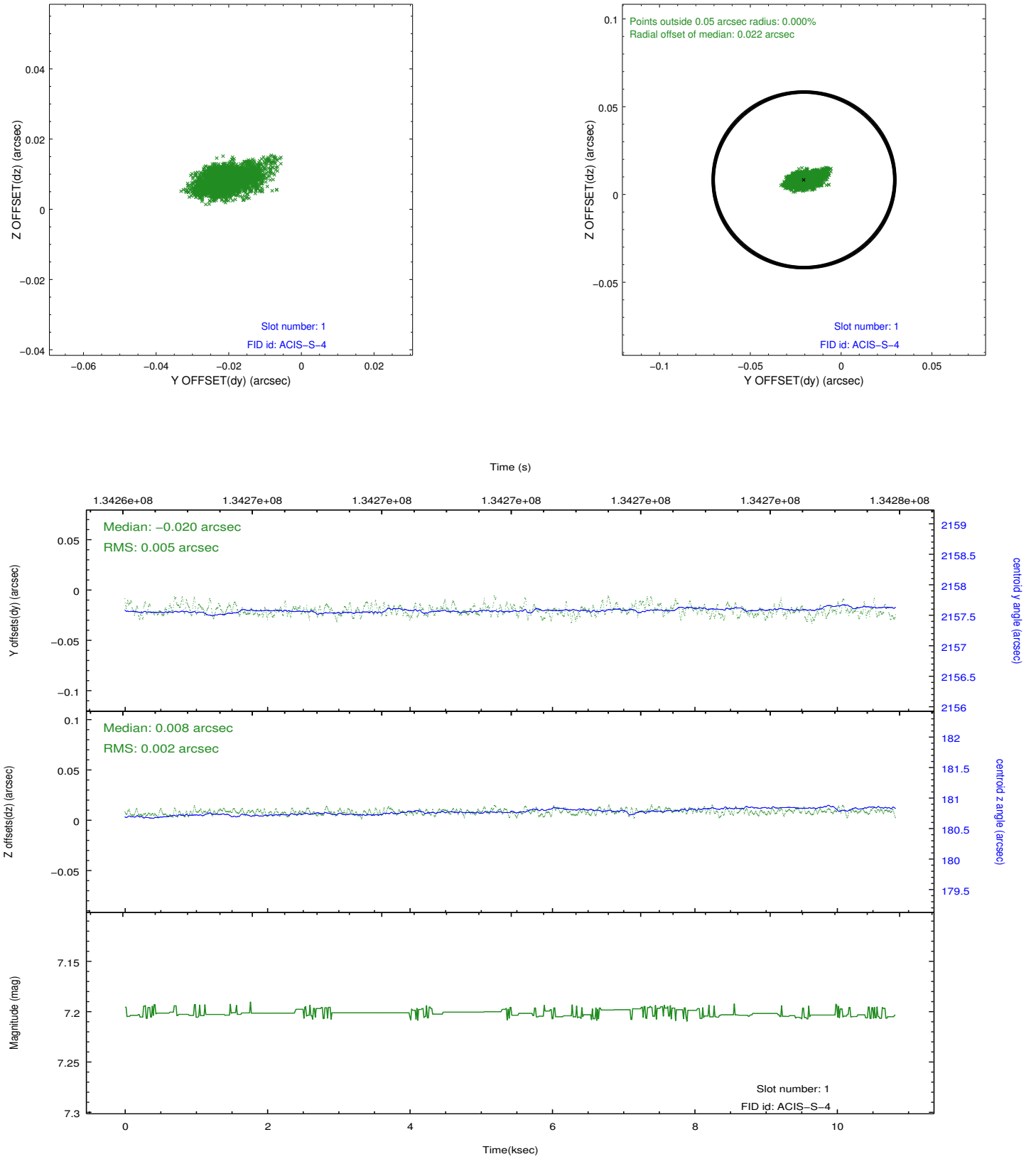


2.5 FID Slots

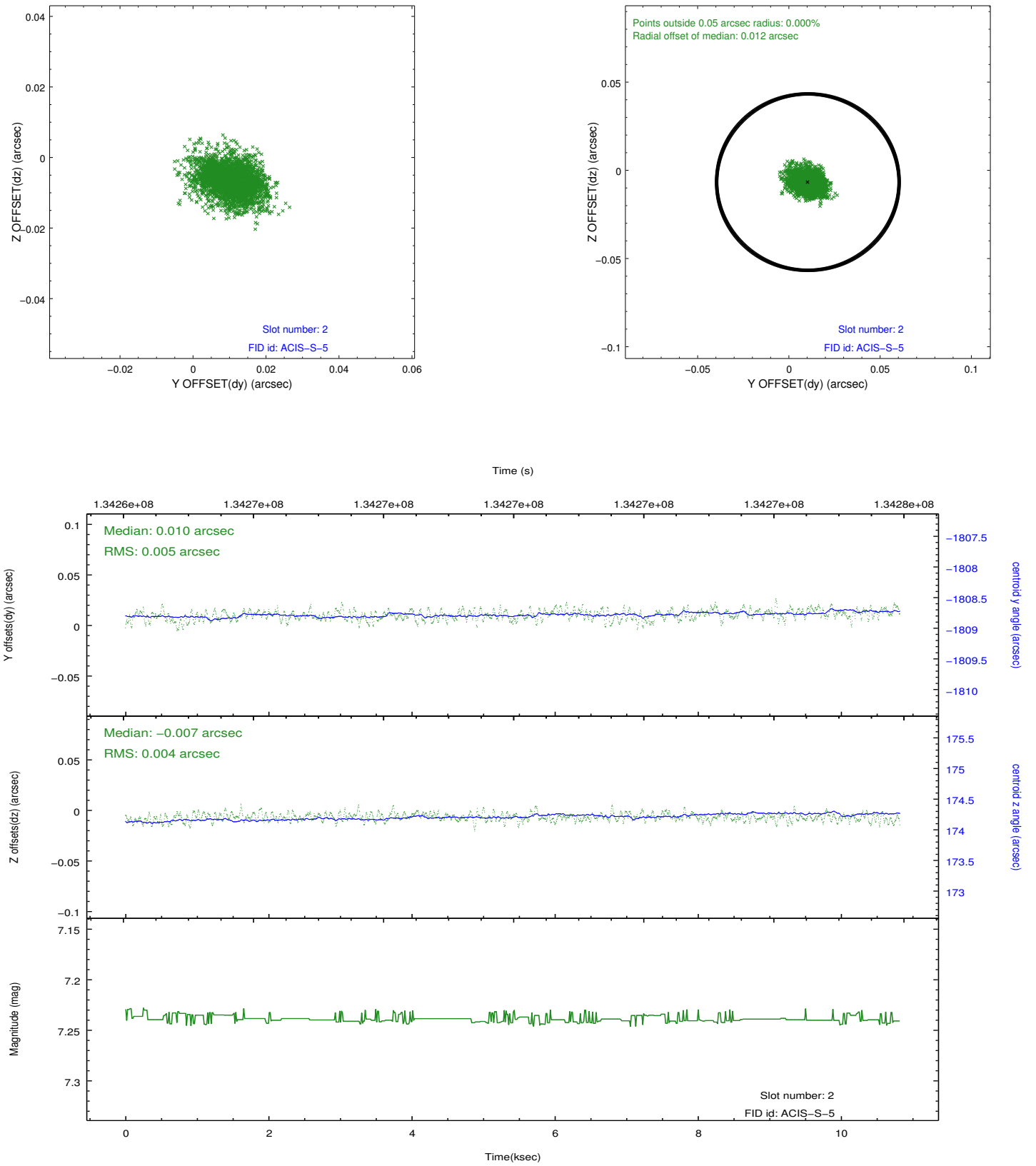
2.5.1 Slot 0



2.5.2 Slot 1



2.5.3 Slot 2



A Summary

A.1 Status

V&V Scientist	Jen Lauer
V&V Date (YYYY-MM-DD)	2012.10.18
V&V Edition	1
V&V Disposition and Status	OK
V&V Charge Time	10.658

A.2 Comments