

V&V Reference Report

L2 ASCDS Version : 7.6.8.1

Observation 3002 - L2 Version 001
Chandra X-Ray Center

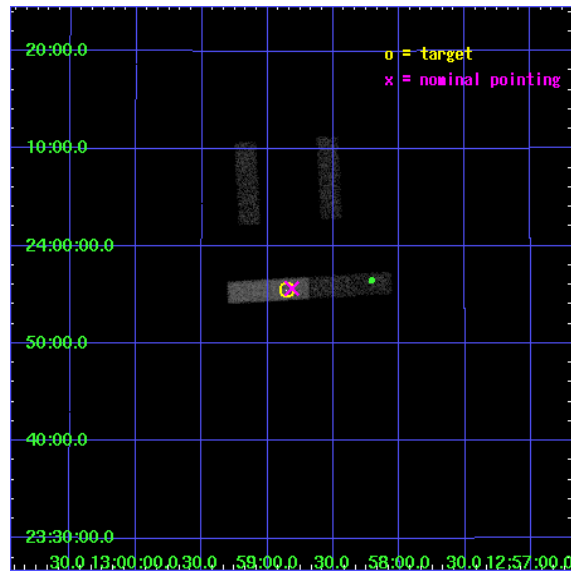
L2 Processing Date : Sep 9 2006

Contents

1	Front	2
2	OBI	3
2.1	OBI	3
2.1.1	Images	3
2.1.2	Bias	3
2.1.3	Parameters	4
2.1.4	Events	4
2.2	Compared Parameters	5
2.3	Aspect	6
2.4	Star Slots	9
2.4.1	Slot 3	9
2.4.2	Slot 4	10
2.4.3	Slot 5	11
2.4.4	Slot 6	12
2.4.5	Slot 7	13
2.5	FID Slots	14
2.5.1	Slot 0	14
2.5.2	Slot 1	15
2.5.3	Slot 2	16
3	Point Sources	17
A	Summary	18
A.1	Status	18
A.2	Comments	18

1 Front

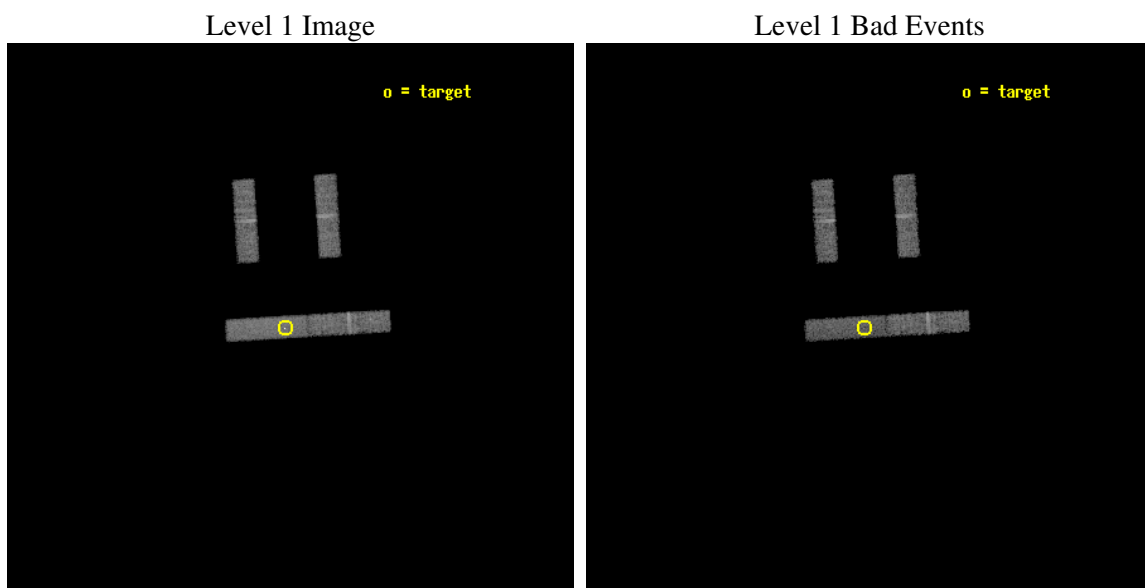
seq_num	700441
obs_id	3002
title	CHANDRA SNAPSHOT OBSERVATIONS OF SOFT X-RAY TRANSIENT AGN
observer	Dr Rick Edelson
object	RX J1258+23
dtcycle	0
cycle	P
ra_targ	194.714167
dec_targ	23.925556
ra_nom	194.70384801104
dec_nom	23.927830559842
roll_nom	176.52762624549
revision	3
ontime	10658.958979905
livetime	10238.76025888
ontime2	10659.973572195
ontime3	10658.958979934
ontime6	10660.0
ontime7	10658.958979905
l2events	15955



2 OBI

2.1 OBI

2.1.1 Images



2.1.2 Bias

Chip 2

Chip 3

Chip 6



Chip 7



2.1.3 Parameters

obi_num	1
ascdsver	7.6.8.1
caldsver	3.2.3
date	2006-09-09T13:13:54
revision	3

sched_exp_time	10000.000000
ontime	10660.133792698
ontime2	10661.174812794
ontime3	10660.133792728
ontime6	10661.174812794
ontime7	10660.133792698
l1events	86461

2.1.4 Events

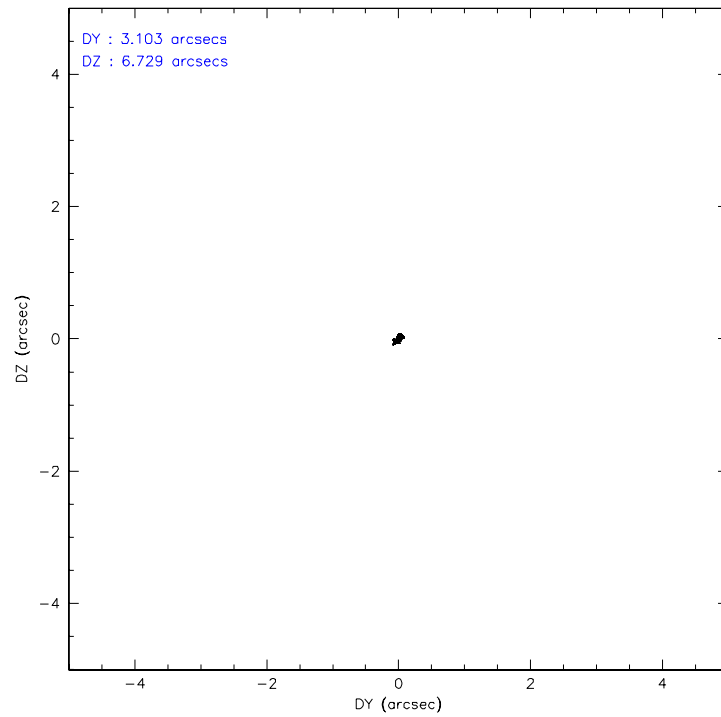
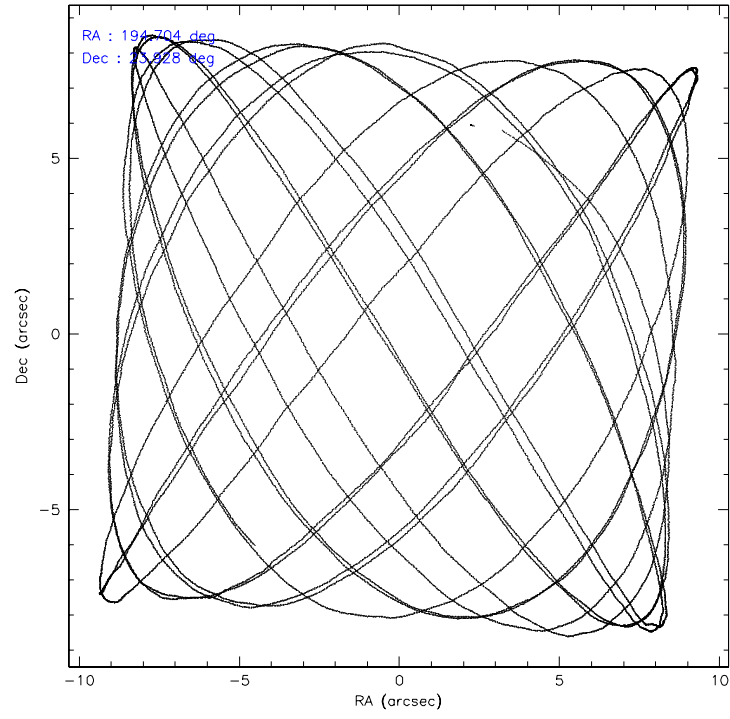
	ccd 2	ccd 3	ccd 6	ccd 7
level 1 events	20506	20456	21113	24386
rejected events	18242	18158	18679	13810
rejected %	88%	88%	88%	56%

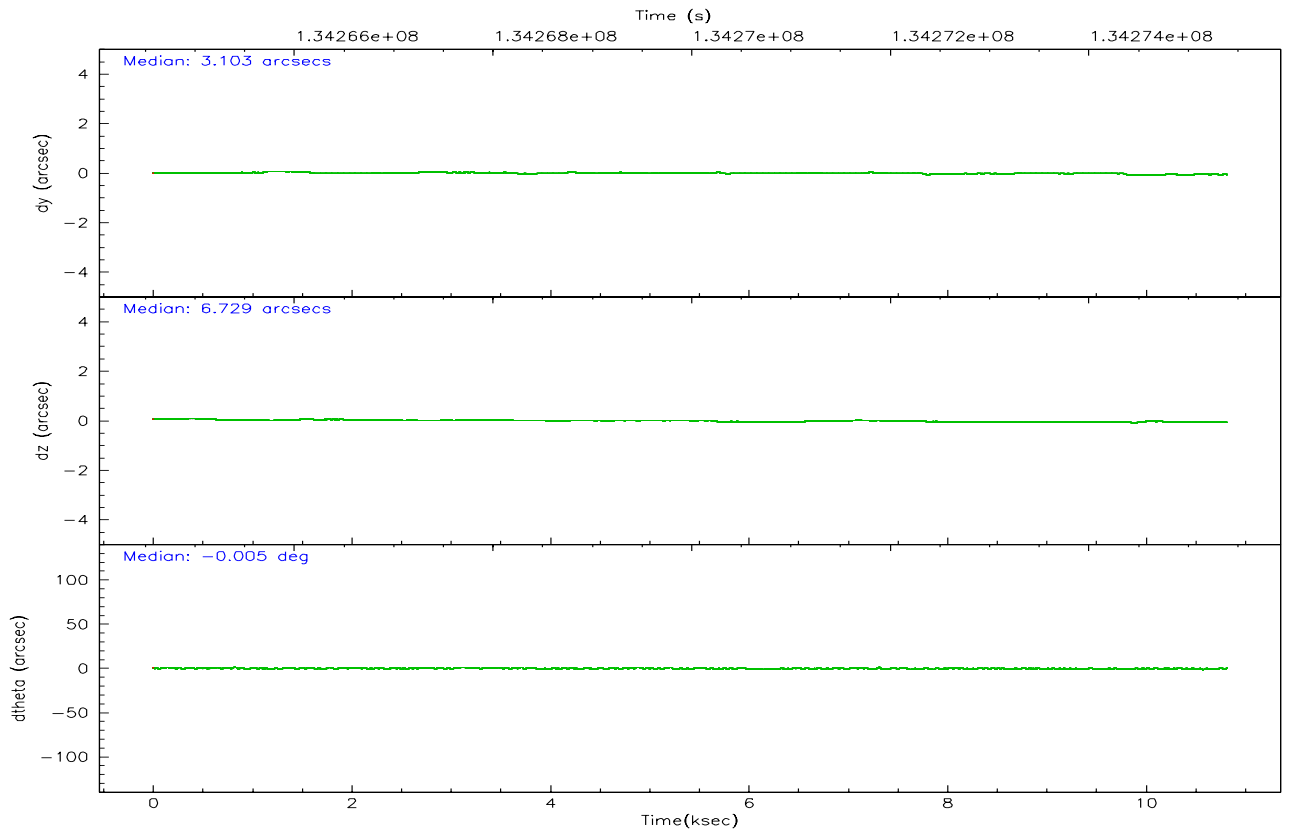
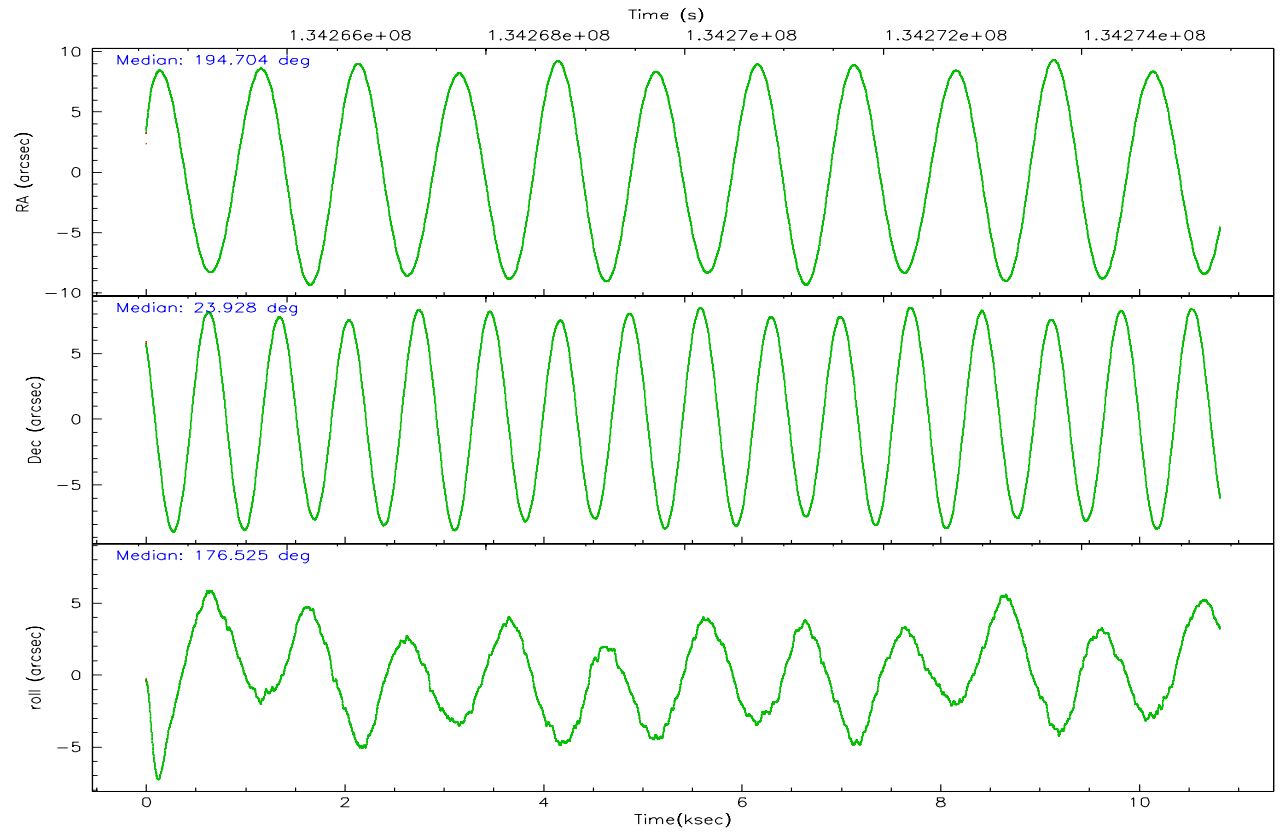
	ccd 2	ccd 3	ccd 6	ccd 7
grade 0 events	802	872	887	1092
	3%	4%	4%	4%
grade 1 events	5	10	8	20
	0%	0%	0%	0%
grade 2 events	396	414	441	2569
	1%	2%	2%	10%
grade 3 events	318	327	358	799
	1%	1%	1%	3%
grade 4 events	370	293	332	774
	1%	1%	1%	3%
grade 5 events	623	671	796	1621
	3%	3%	3%	6%
grade 6 events	378	392	416	5343
	1%	1%	1%	21%
grade 7 events	17614	17477	17875	12168
	85%	85%	84%	49%

2.2 Compared Parameters

Parameter	Planned	Actual	Parameter	Planned	Actual
Instrument	ACIS	ACIS	Obspar format version number	6	6
Detector	ACIS-2367	ACIS-2367	Obspar file type	PREDICTED	ACTUAL
Grating	NONE	NONE	Obspar update status	NONE	UPDATED
Data mode	FAINT	FAINT	On-chip summing requested	N	N
Observation mode	POINTING	POINTING	Subarray requested	1/4	1/4
Pointing RA	194.730353	194.7038480110394	Subarray start row	0	385
Pointing Dec	23.940316	23.92783055984197	Subarray row count	1024	256
Pointing Roll	176.360242	176.5276262454859	Alternating exposures requested	N	N
SIM focus pos (mm)	-0.684267	-0.6828225247311905	Primary exposure time	0.000000	1
SIM defocus (mm)	0	0.001444936568705701			
SIM translation stage pos (mm)	-190.132523	-190.1400660498719			
SIM translation stage offset (mm)	0	0.00754346686406393			
Observation start time	134265391.184000	134264119.8487			
Observation start date	2002-04-03T23:55:27	2002-04-03T23:35:19			
Observation end time	134275391.184000	134275525.53667			
Observation end date	2002-04-04T02:42:07	2002-04-04T02:45:25			
Read mode	TIMED	TIMED			

2.3 Aspect



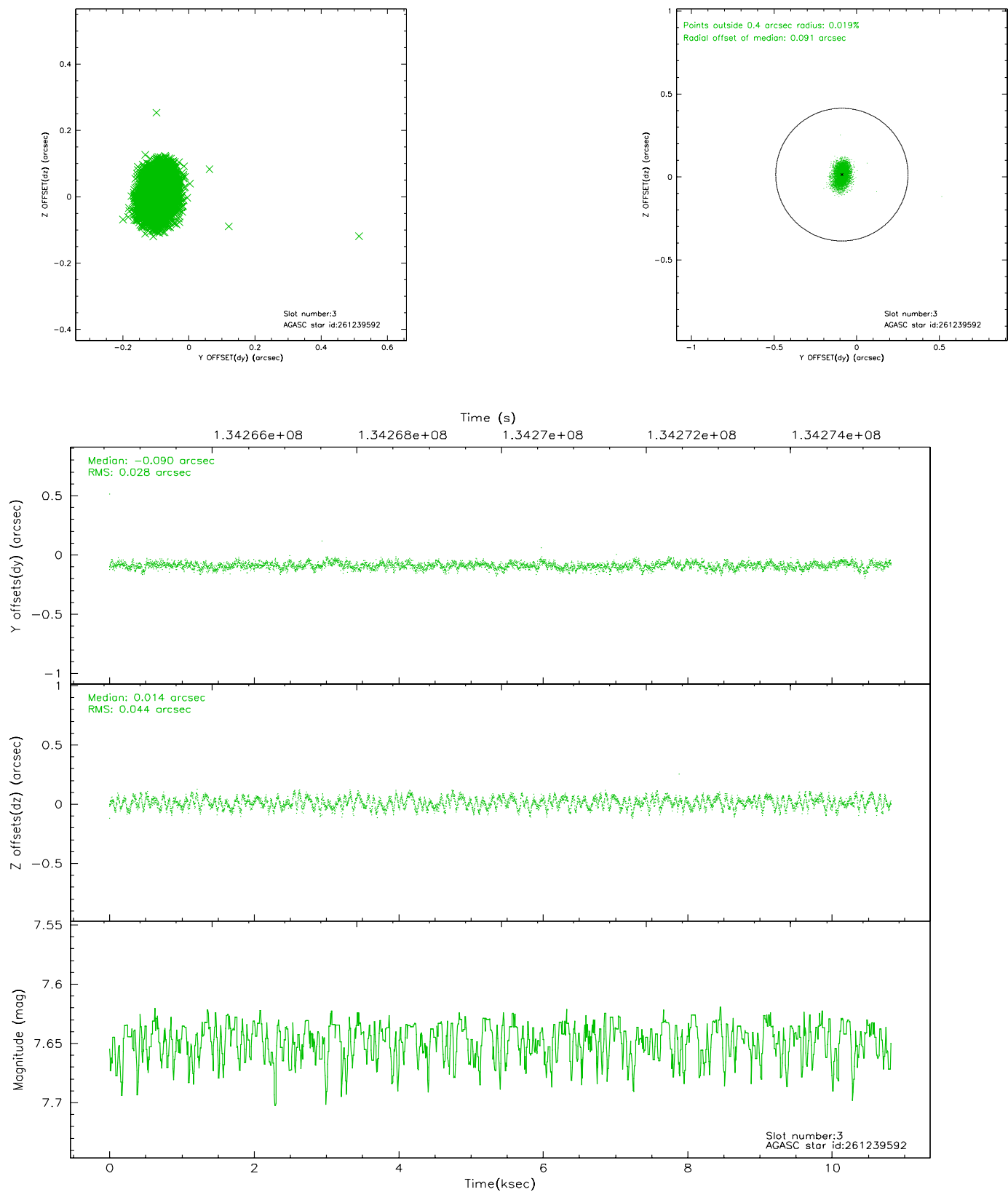


Slot Statistics

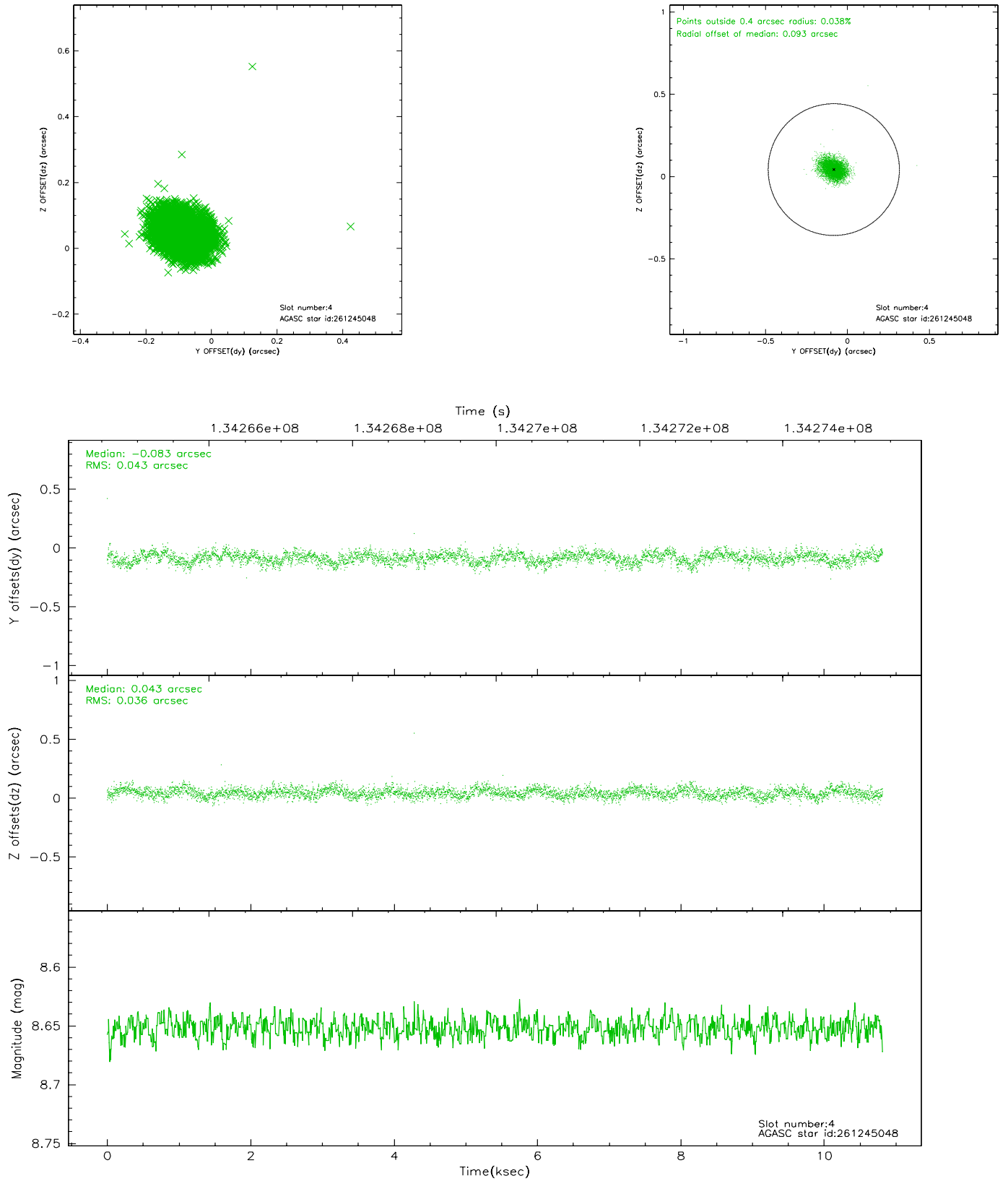
slot	status	id	mag	n_pts	med_dy	med_dz	dr1	dr2	ra	dec	mean_y	mean_z
0	FID	ACIS-S-2	7.12	2640	-0.010	0.030	0.007	0.011	0.000000	0.000000	-755.74	-1727.86
1	FID	ACIS-S-4	7.20	2639	-0.062	-0.003	0.005	0.008	0.000000	0.000000	2157.25	180.13
2	FID	ACIS-S-5	7.24	2639	0.041	-0.018	0.006	0.010	0.000000	0.000000	-1807.93	174.28
3	GUIDE	261239592	7.65	5278	-0.090	0.014	0.054	0.087	195.264873	24.316318	-1663.78	-1465.21
4	GUIDE	261245048	8.65	5276	-0.083	0.043	0.058	0.096	194.015631	23.574141	2270.00	1459.63
5	GUIDE	261243888	8.43	5277	0.033	0.014	0.068	0.112	195.146571	23.651749	-1434.96	948.20
6	GUIDE	261237448	9.03	5276	-0.058	0.056	0.073	0.117	194.252940	24.397499	1666.74	-1545.26
7	GUIDE	261247520	9.56	5274	0.202	-0.126	0.084	0.140	195.028104	23.710956	-1031.12	760.57

2.4 Star Slots

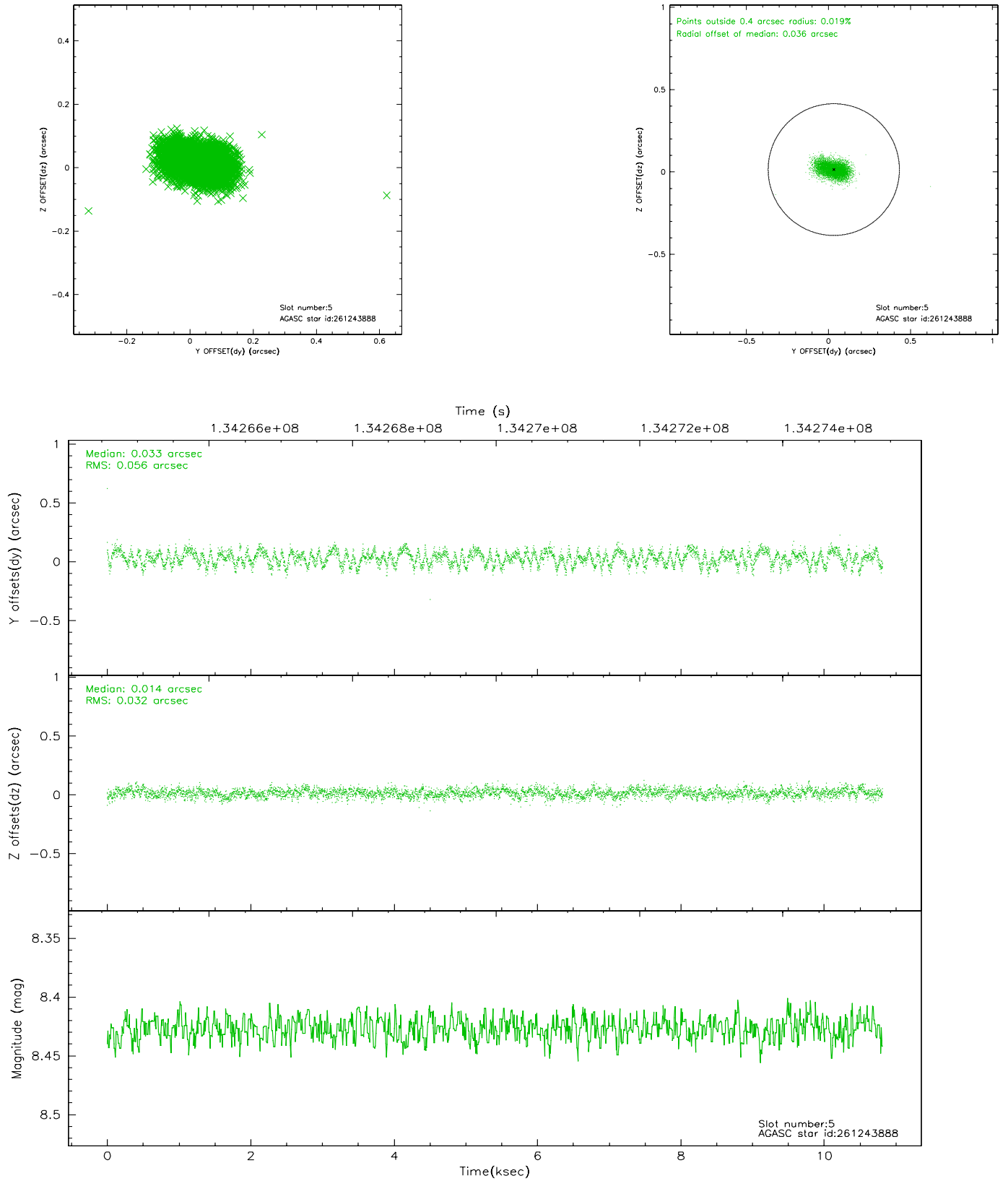
2.4.1 Slot 3



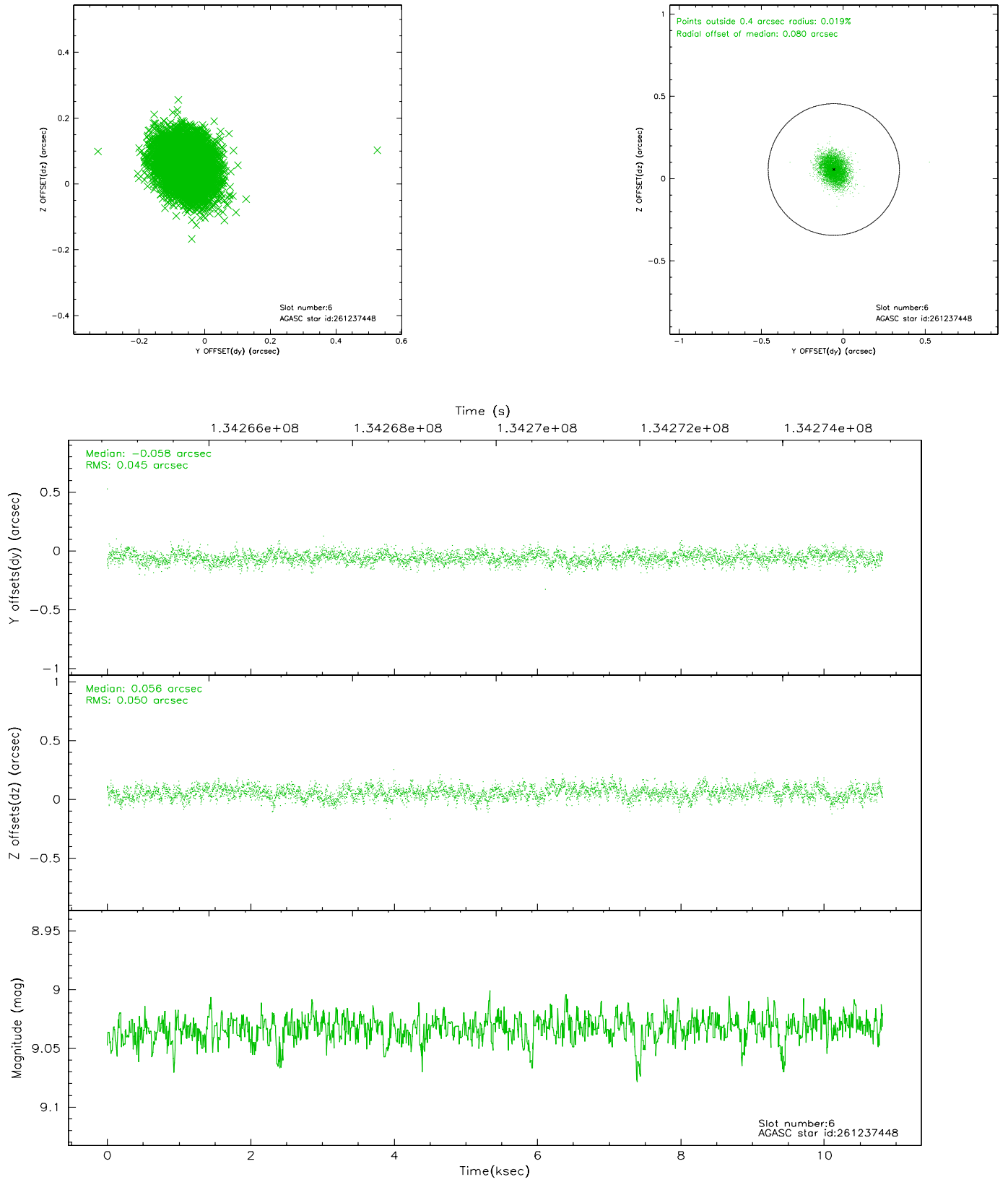
2.4.2 Slot 4



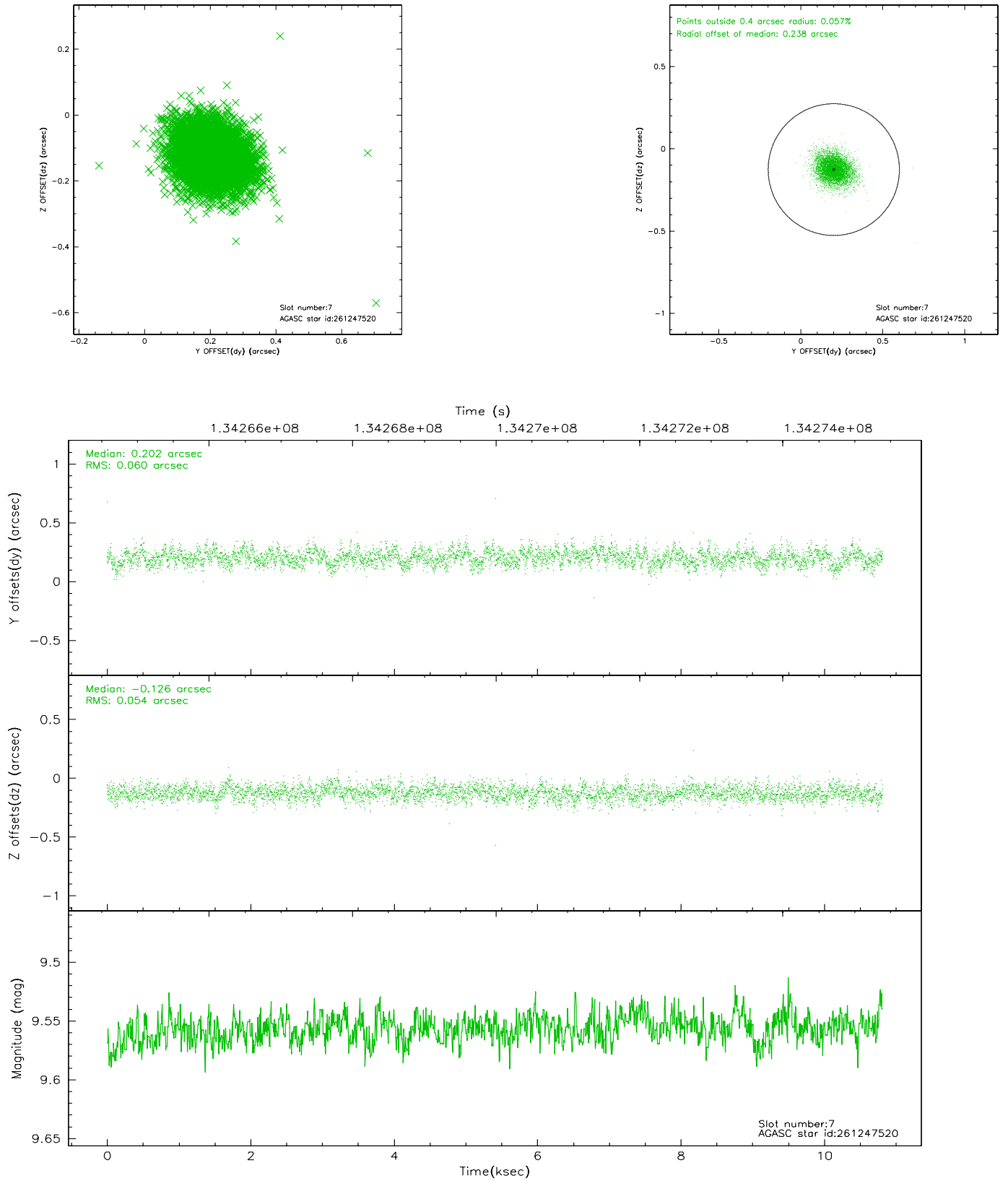
2.4.3 Slot 5



2.4.4 Slot 6

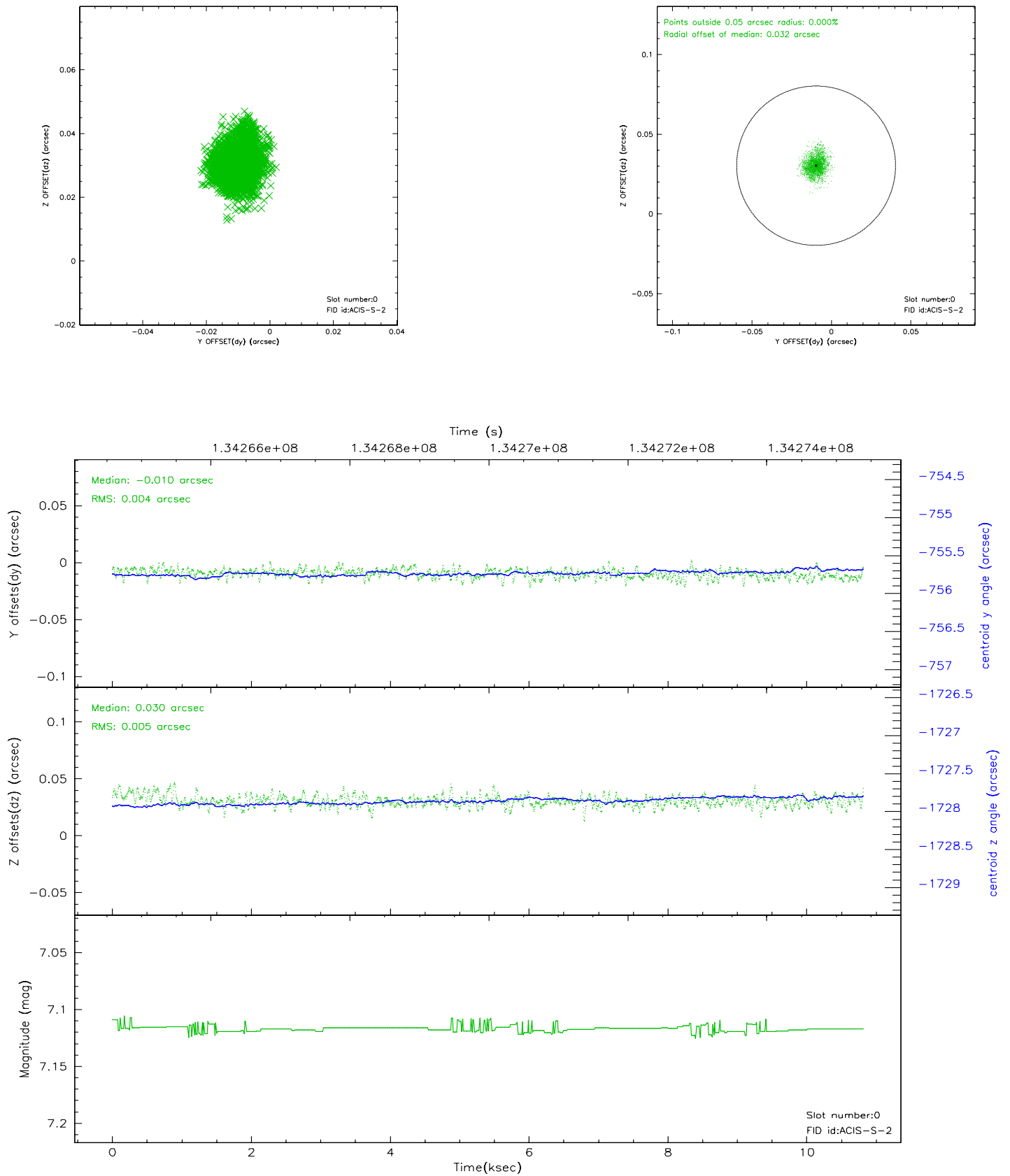


2.4.5 Slot 7

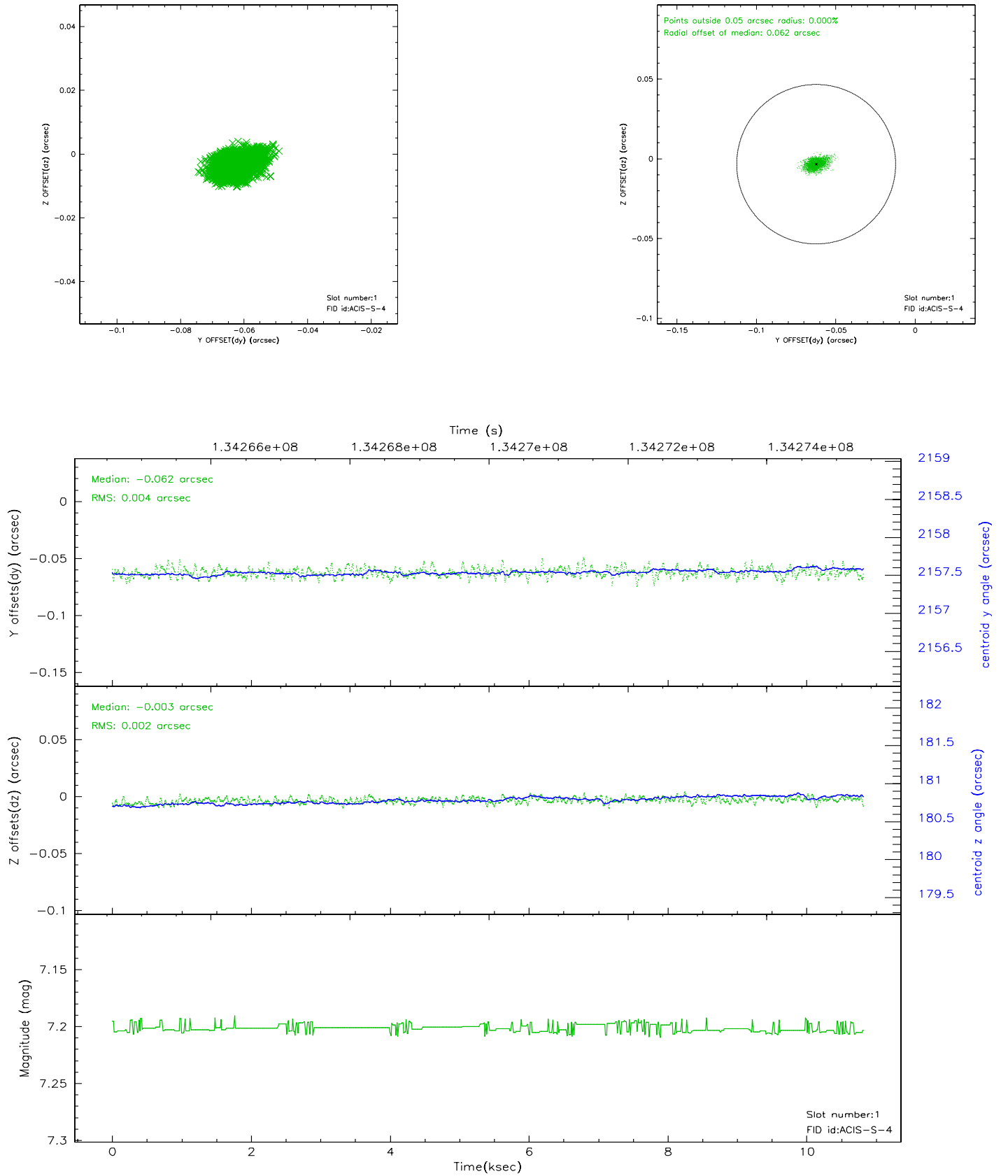


2.5 FID Slots

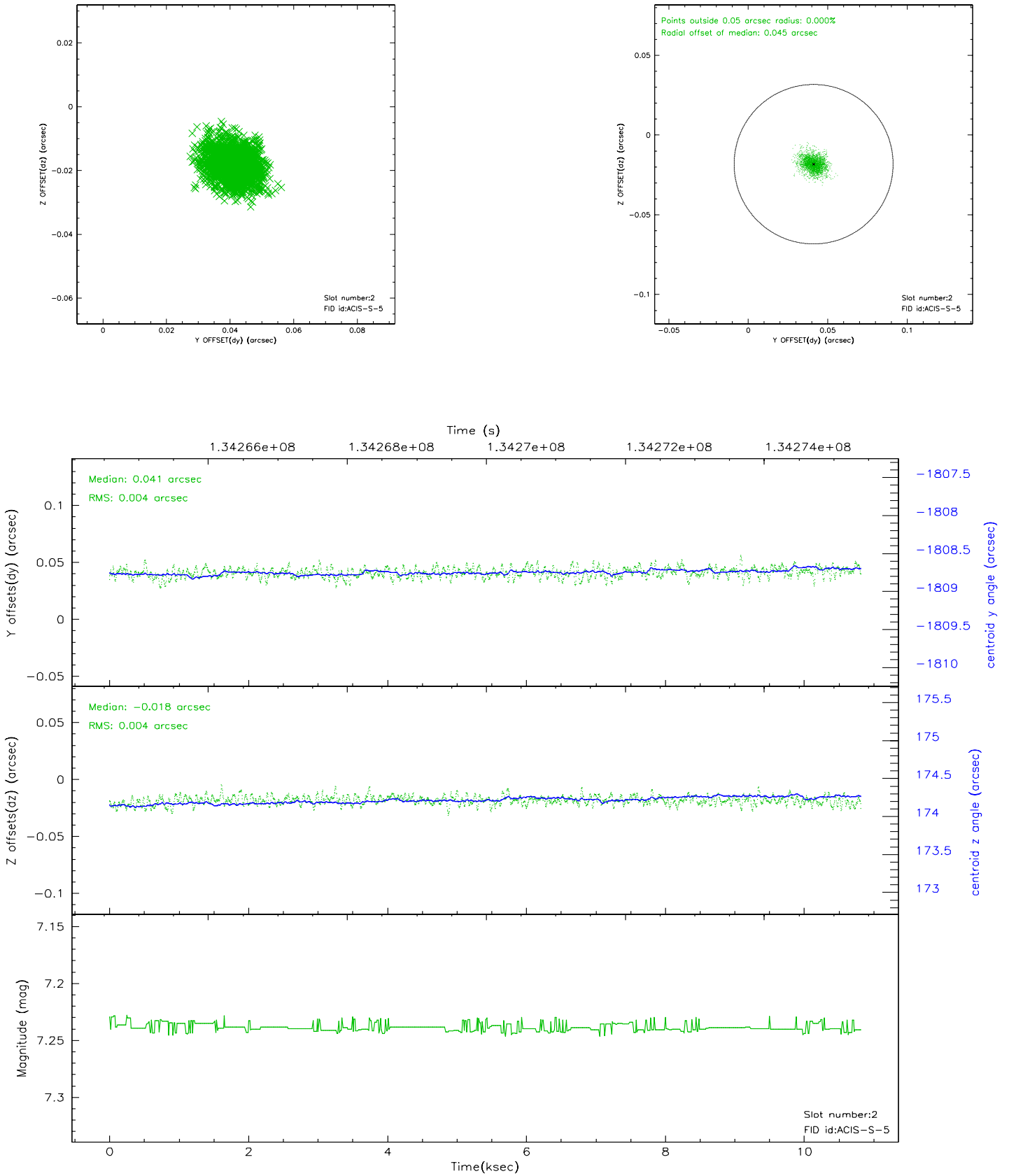
2.5.1 Slot 0



2.5.2 Slot 1



2.5.3 Slot 2



3 Point Sources

8.38 arcmin



A Summary

A.1 Status

V&V Scientist	Jen Lauer
V&V Date (YYYY-MM-DD)	2006.09.10
V&V Edition	1
V&V Disposition and Status	OK
V&V Charge Time	10.658

A.2 Comments