

V&V Reference Report

L2 ASCDS Version : 8.4.5

Observation 2992 - L2 Version 3
Chandra X-Ray Center

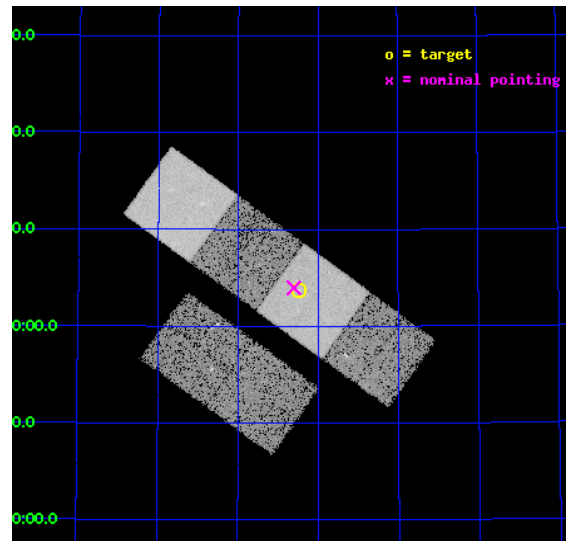
L2 Processing Date : Oct 19 2012

Contents

1	Front	2
2	OBI	3
2.1	OBI	3
2.1.1	Images	3
2.1.2	Bias	3
2.1.3	Parameters	4
2.1.4	Events	4
2.2	Compared Parameters	5
2.3	Aspect	6
2.4	Star Slots	9
2.4.1	Slot 3	9
2.4.2	Slot 4	10
2.4.3	Slot 5	11
2.4.4	Slot 6	12
2.4.5	Slot 7	13
2.5	FID Slots	14
2.5.1	Slot 0	14
2.5.2	Slot 1	15
2.5.3	Slot 2	16
A	Summary	17
A.1	Status	17
A.2	Comments	17

1 Front

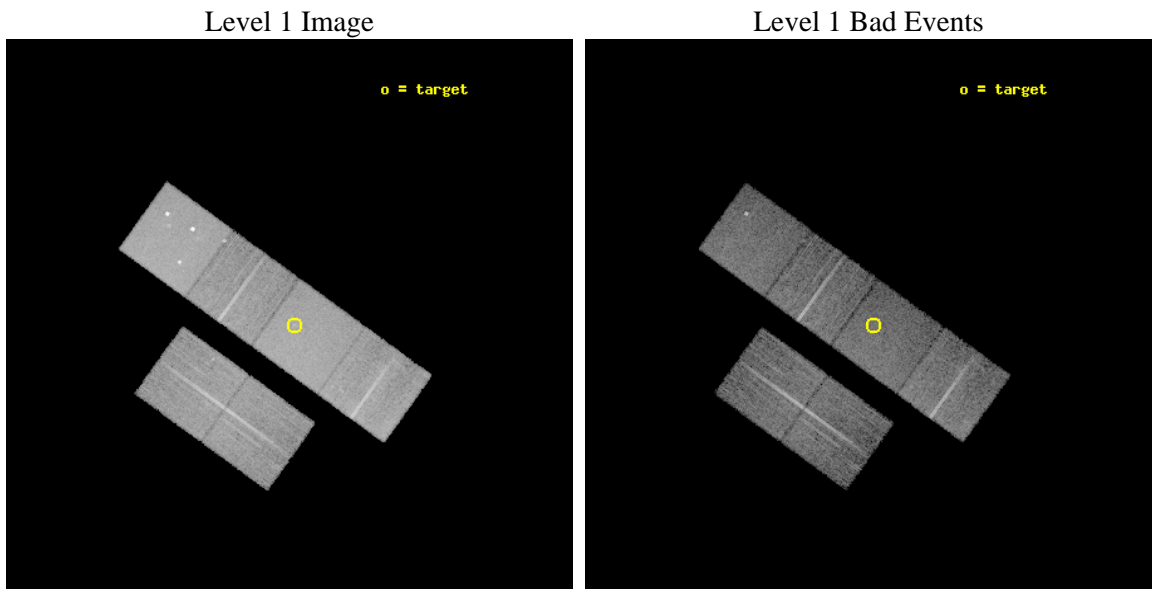
seq_num	700431	Sequence number
obs_id	2992	Observation id
title	CHANDRA OBSERVATIONS OF A POPULATION OF TYPE 2 QUASARS DISCOVERED IN THE DPOSS	Proposal title
observer	PROF. S. DJORGOVSKI	Principal investigator
object	PSS 1507+5603	Source name
dtcycle	0	
cycle	P	events from which exps? Prim/Second/Both
ra_targ	226.81	Observer's specified target RA [deg]
dec_targ	56.062222	Observer's specified target Dec [deg]
ra_nom	226.82559352126	Nominal RA [deg]
dec_nom	56.066390071013	Nominal Dec [deg]
roll_nom	35.817748832603	Nominal Roll [deg]
revision	3	Processing version of data
ontime	14908.79994446	Sum of GTIs [s]
livetime	14720.015742562	Livetime [s]
ontime2	14908.79994446	Sum of GTIs [s]
ontime3	14908.79994446	Sum of GTIs [s]
ontime5	14908.79994446	Sum of GTIs [s]
ontime6	14908.79994446	Sum of GTIs [s]
ontime7	14908.79994446	Sum of GTIs [s]
ontime8	14908.79994446	Sum of GTIs [s]
l2events	141288	Number of level 2 events



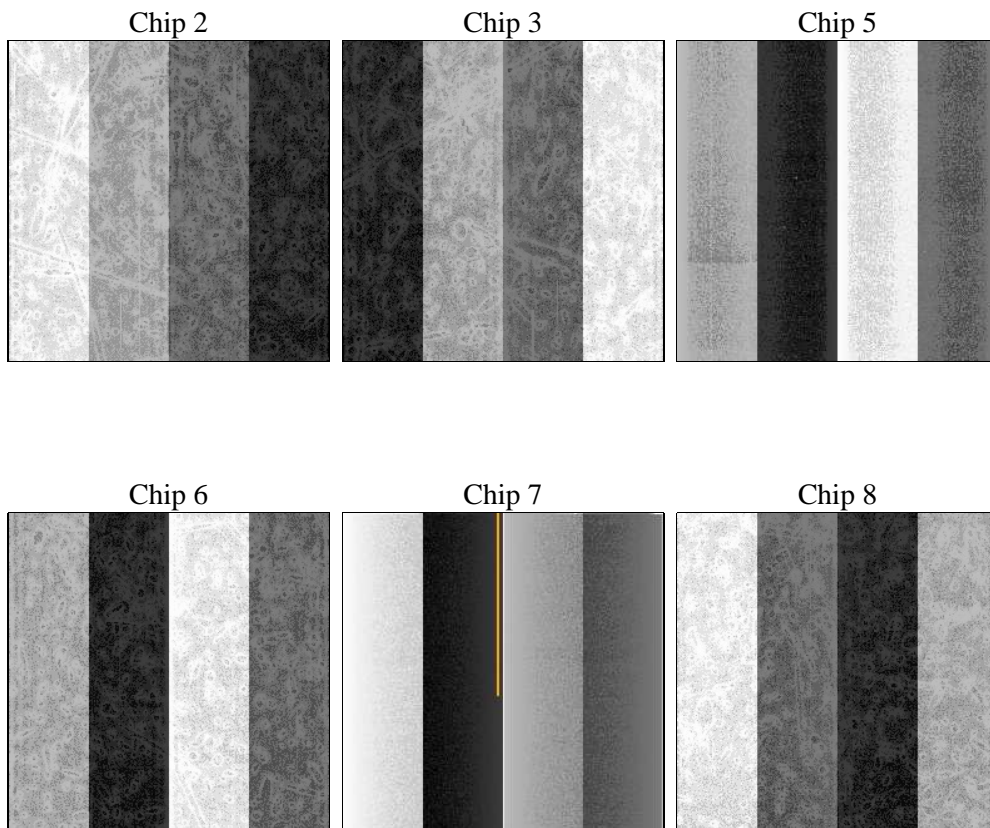
2 OBI

2.1 OBI

2.1.1 Images



2.1.2 Bias



2.1.3 Parameters

obi_num	1	Obi number	sched_exp_time	14888.000000	[s] Scheduled observation exposure time
ascdsver	8.4.5	Processing system revision	ontime	14908.79994446	Sum of GTIs [s]
caldsver	4.5.2	 	ontime2	14908.79994446	Sum of GTIs [s]
date	2012-10-19T06:20:09	Date and time of file creation	ontime3	14908.79994446	Sum of GTIs [s]
revision	3	Processing version of data	ontime5	14908.79994446	Sum of GTIs [s]
			ontime6	14908.79994446	Sum of GTIs [s]
			ontime7	14908.79994446	Sum of GTIs [s]
			ontime8	14908.79994446	Sum of GTIs [s]
			l1events	630700	Number of level 1 events

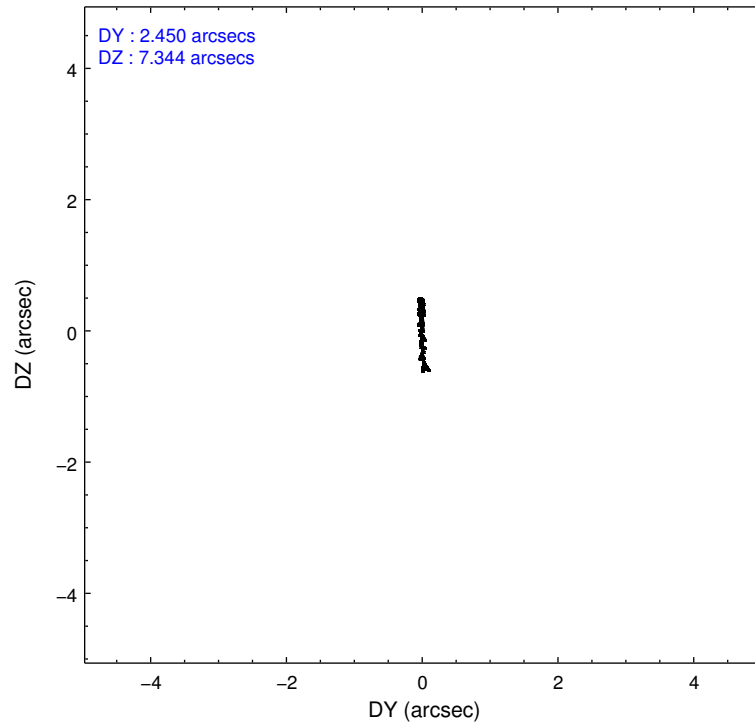
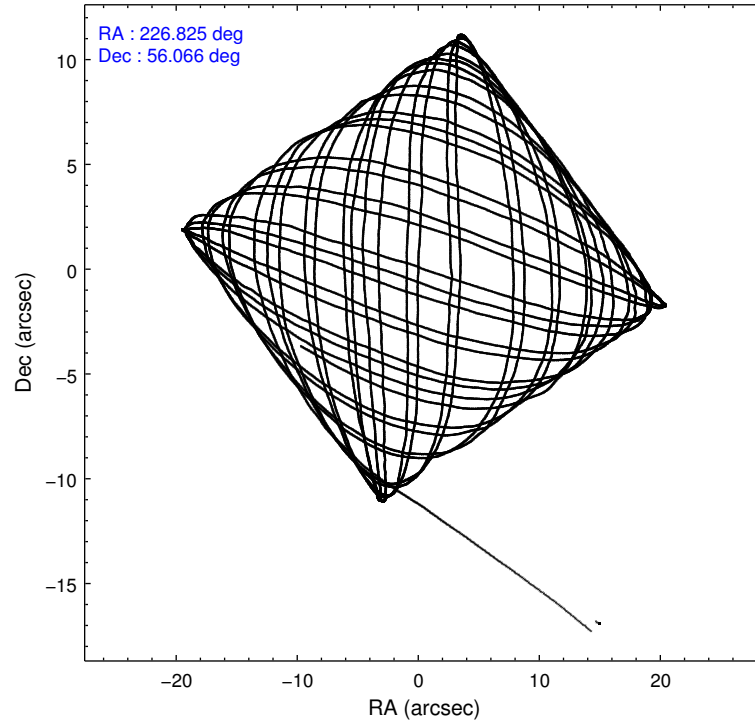
2.1.4 Events

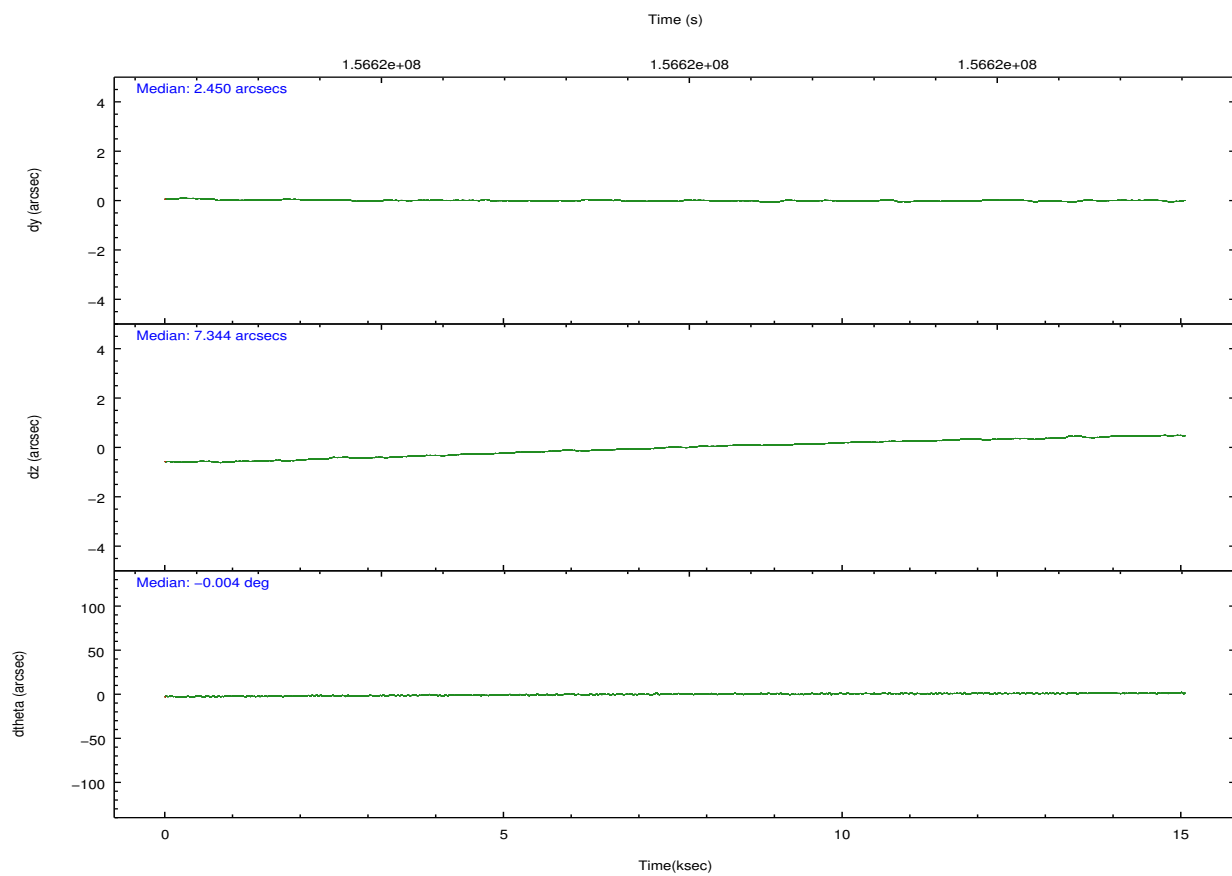
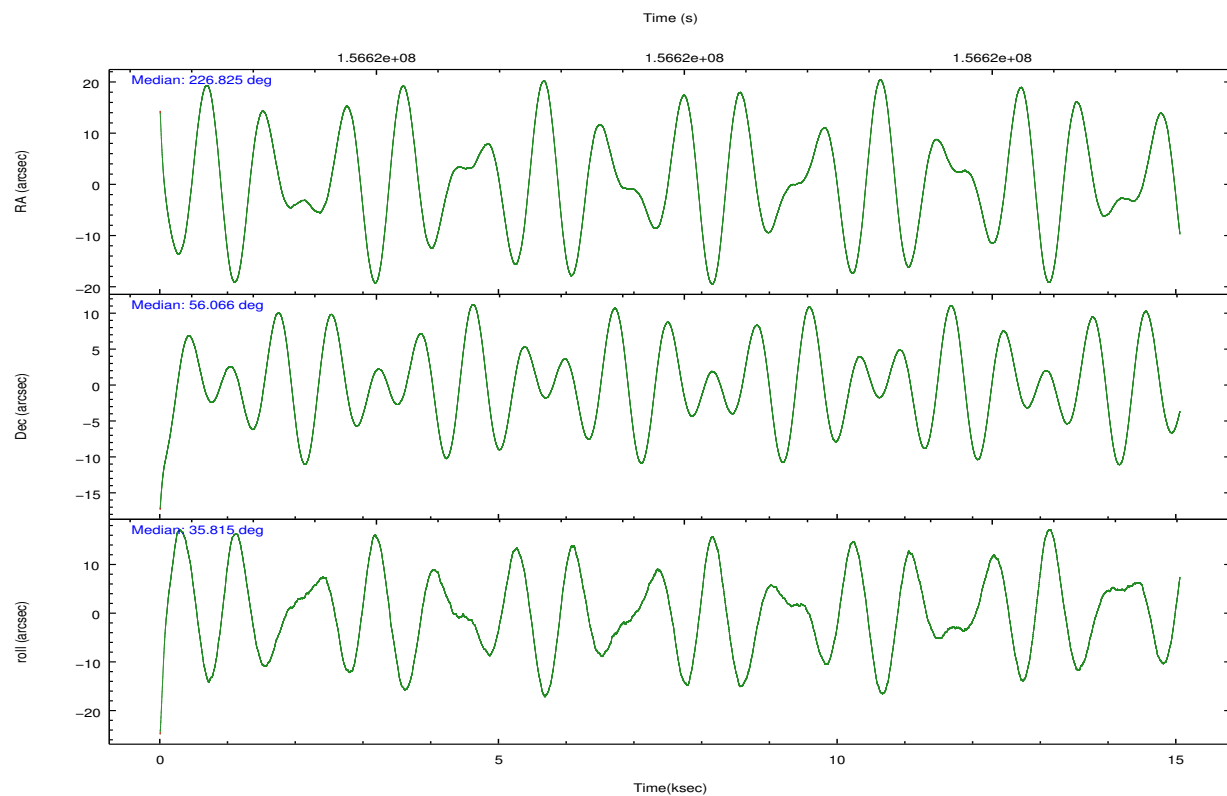
	ccd 2	ccd 3	ccd 5	ccd 6	ccd 7	ccd 8		ccd 2	ccd 3	ccd 5	ccd 6	ccd 7	ccd 8
level 1 events	91020	84714	136851	87736	119278	111101	grade 0 events	4980	4501	10823	4165	4788	7258
rejected events	80396	74524	71632	77207	70110	88079		5%	5%	7%	4%	4%	6%
rejected %	88%	87%	52%	87%	58%	79%	grade 1 events	58	38	226	49	107	82
								0%	0%	0%	0%	0%	0%
							grade 2 events	2020	1840	18533	2107	9597	5047
								2%	2%	13%	2%	8%	4%
							grade 3 events	973	1014	2587	1037	4451	2514
								1%	1%	1%	1%	3%	2%
							grade 4 events	972	1054	2312	1039	4369	2335
								1%	1%	1%	1%	3%	2%
							grade 5 events	3477	3538	9689	3899	11409	5064
								3%	4%	7%	4%	9%	4%
							grade 6 events	1683	1783	30990	2184	25981	5873
								1%	2%	22%	2%	21%	5%
							grade 7 events	76857	70946	61691	73256	58576	82928
								84%	83%	45%	83%	49%	74%

2.2 Compared Parameters

Parameter	Planned	Actual	Parameter	Planned	Actual
Instrument	ACIS	ACIS	Obspar format version number	7	7
Detector	ACIS-235678	ACIS-235678	Obspar file type	PREDICTED	ACTUAL
Grating	NONE	NONE	Obspar update status	NONE	UPDATED
Data mode	FAINT	FAINT	Number of optional ACIS chips dropped	0	0
Observation mode	POINTING	POINTING	On-chip summing requested	N	N
[deg] Pointing RA	226.806235	226.8255935212577	Subarray requested	NONE	NONE
[deg] Pointing Dec	56.041422	56.06639007101339	Alternating exposures requested	N	N
[deg] Pointing Roll	35.677181	35.81774883260312	[s] Primary exposure time	0.000000	3.2
[mm] SIM focus pos	-0.684267	-0.6828225247311905			
[mm] SIM defocus	0	0.001444936568705701			
[mm] SIM translation stage pos	-190.132523	-190.1400660498719			
[mm] SIM translation stage offset	0	0.00754346686406393			
[s] Observation start time (MET)	156612414.184000	156611422.91903			
Observation start date	2002-12-18T15:25:50	2002-12-18T15:10:22			
[s] Observation end time (MET)	156627302.184000	156627951.55722			
Observation end date	2002-12-18T19:33:58	2002-12-18T19:45:51			
Read mode	TIMED	TIMED			

2.3 Aspect



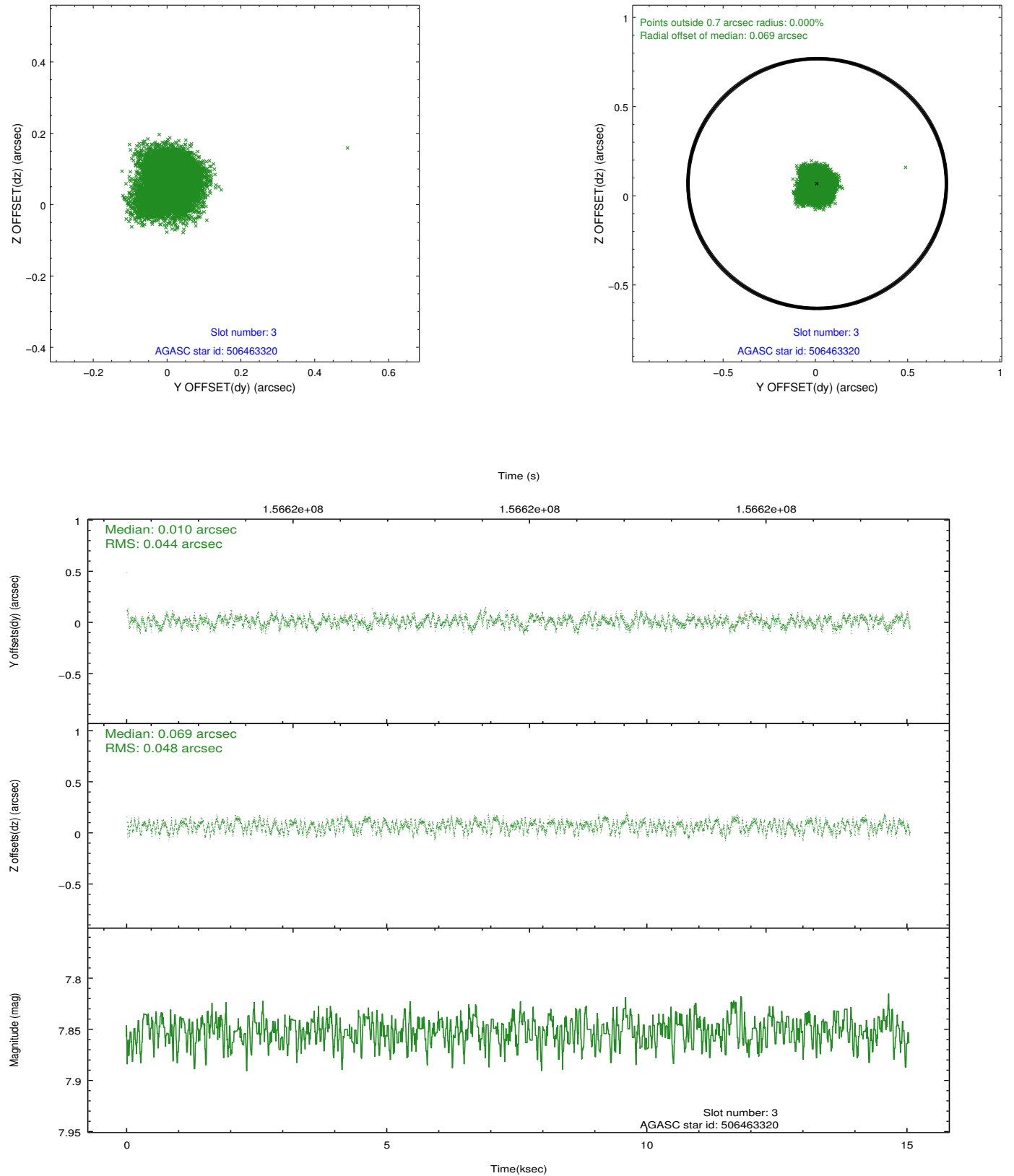


Slot Statistics

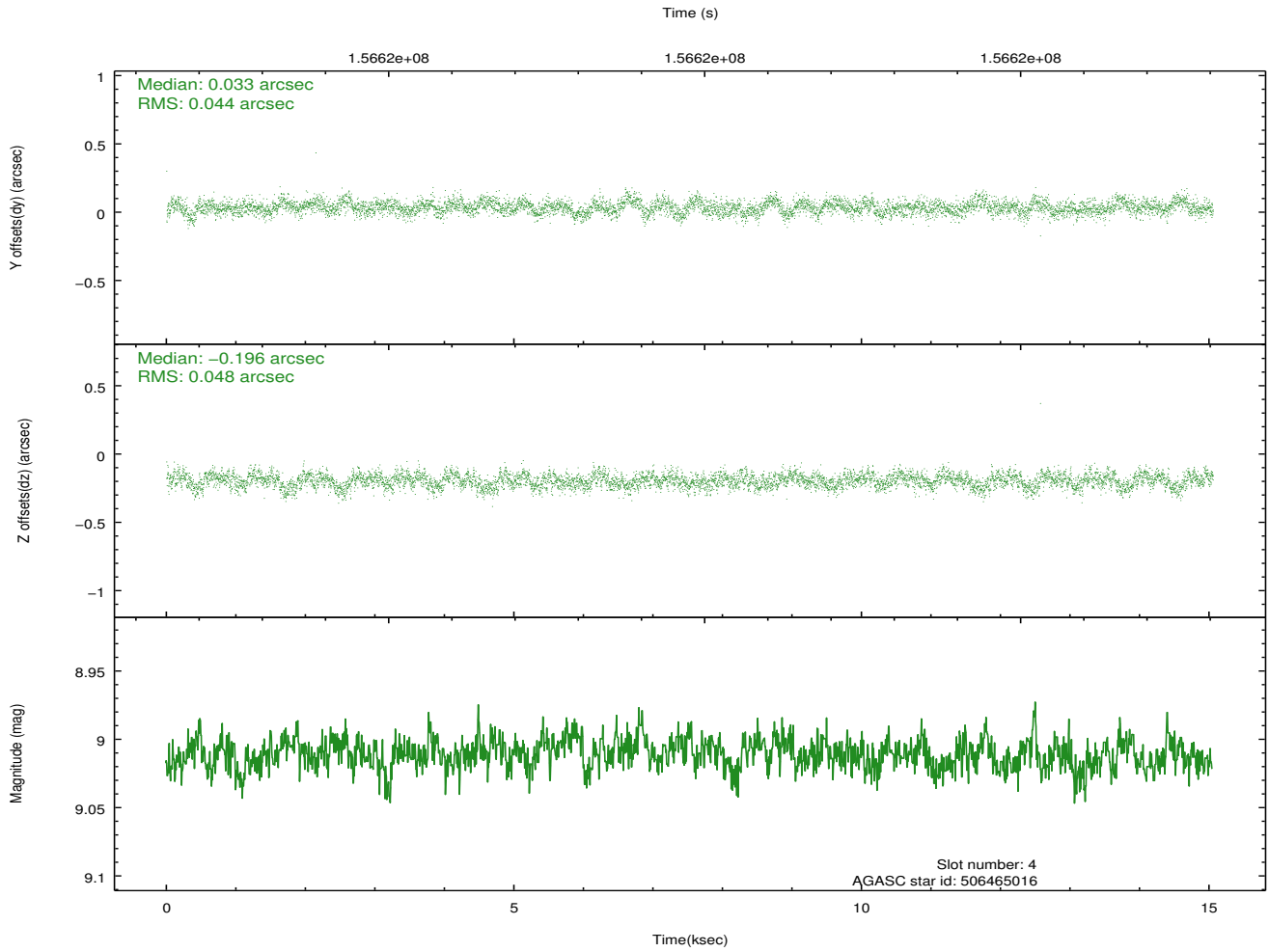
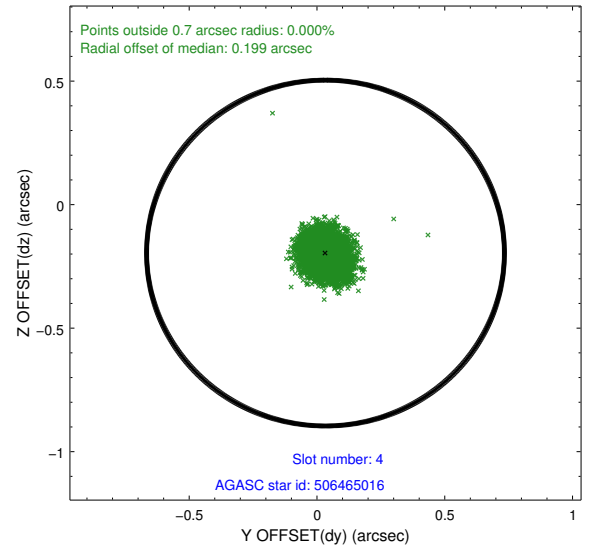
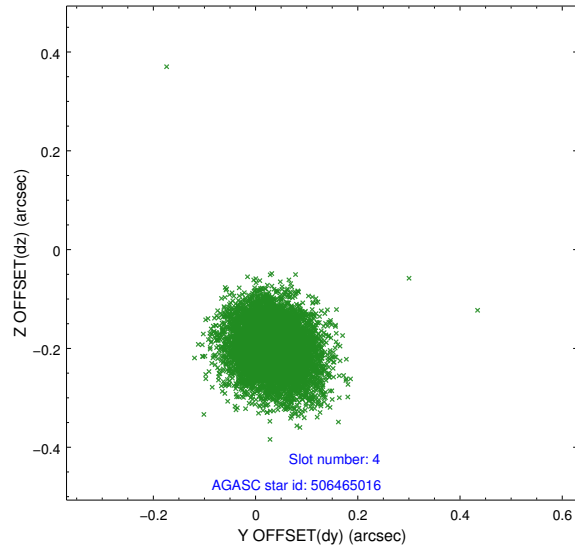
slot	status	id	mag	n_pts	med_dy	med_dz	dr1	dr2	ra	dec	mean_y	mean_z
0	FID	ACIS-S-2	7.11	3673	-0.021	-0.001	0.010	0.015	0.000000	0.000000	-755.10	-1728.48
1	FID	ACIS-S-4	7.20	3670	-0.013	0.011	0.006	0.011	0.000000	0.000000	2158.05	179.70
2	FID	ACIS-S-5	7.24	3673	0.003	-0.000	0.010	0.016	0.000000	0.000000	-1807.53	173.71
3	GUIDE	506463320	7.85	7345	0.010	0.069	0.070	0.108	226.349027	55.677313	-1515.71	-521.26
4	GUIDE	506465016	9.01	7342	0.033	-0.196	0.068	0.112	226.333651	55.890654	-1089.07	117.41
5	GUIDE	507380816	9.00	7341	0.000	0.147	0.095	0.151	226.866183	55.265818	-1527.75	-2339.92
6	GUIDE	507382888	8.33	7343	0.020	0.079	0.068	0.112	227.987228	56.025159	1908.38	-1417.18
7	GUIDE	507387168	9.61	7332	-0.059	-0.101	0.089	0.148	226.927533	56.702730	1584.35	1793.63

2.4 Star Slots

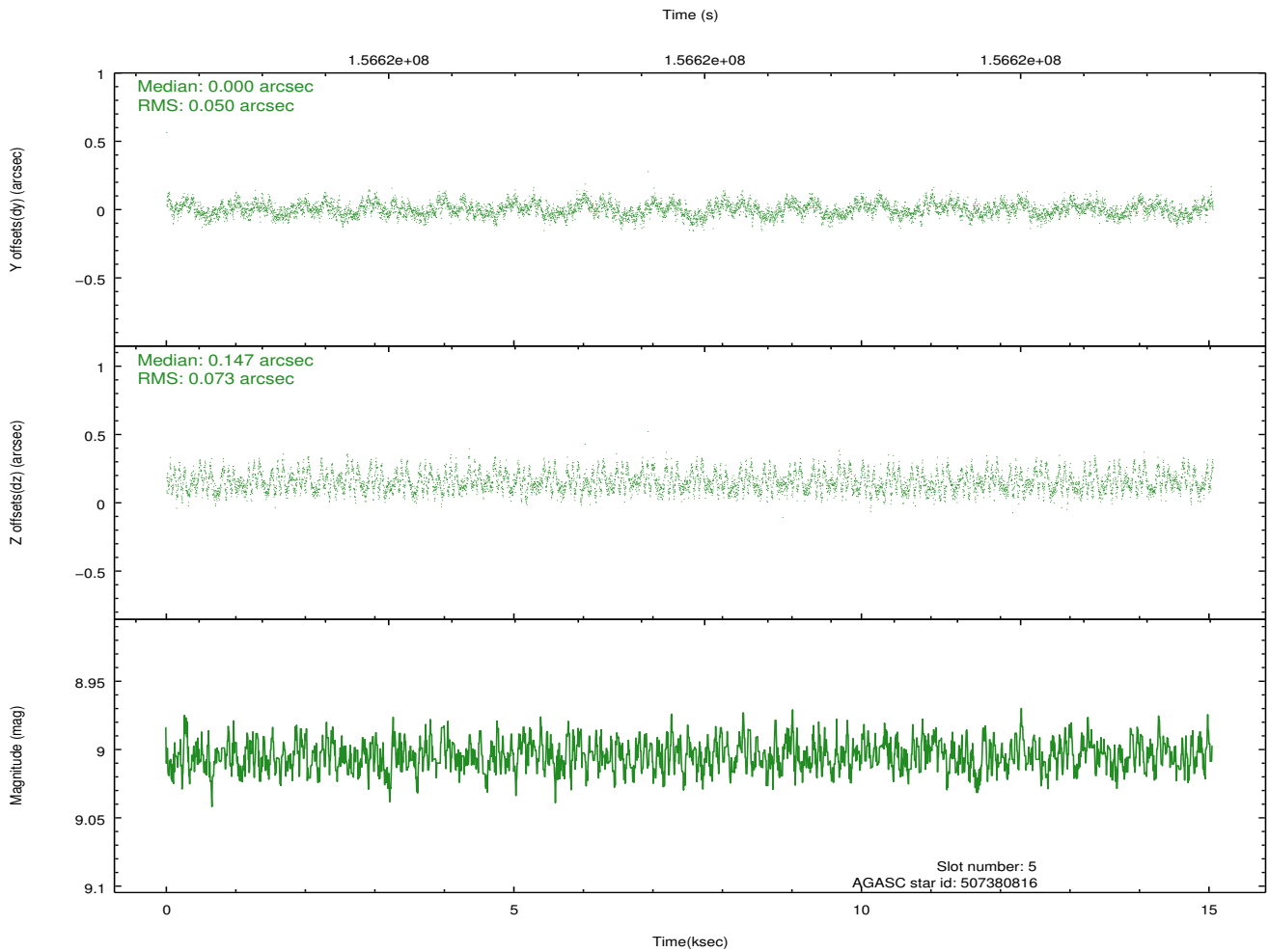
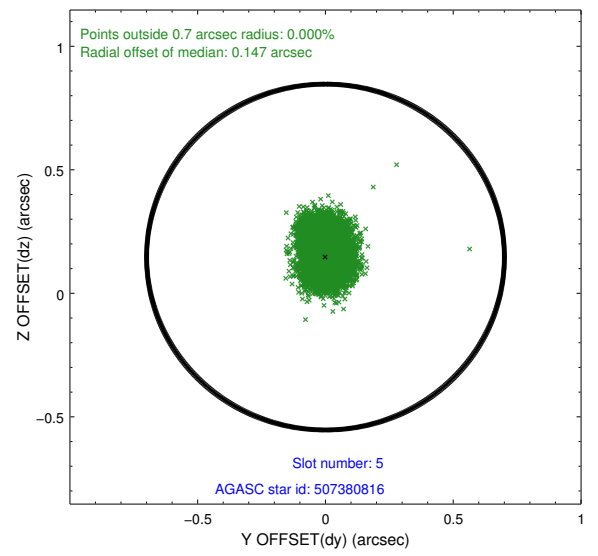
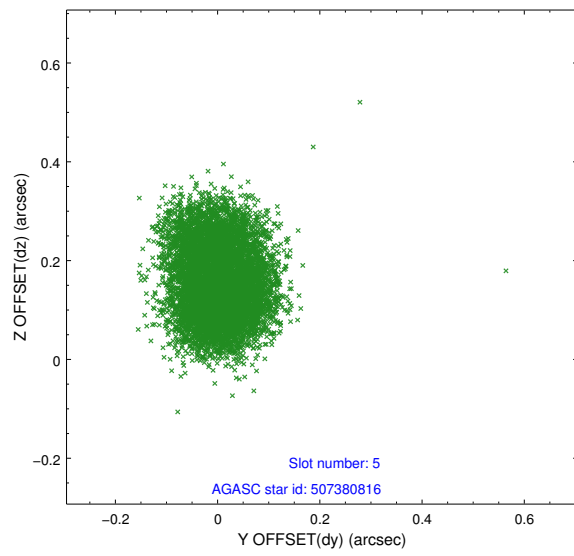
2.4.1 Slot 3



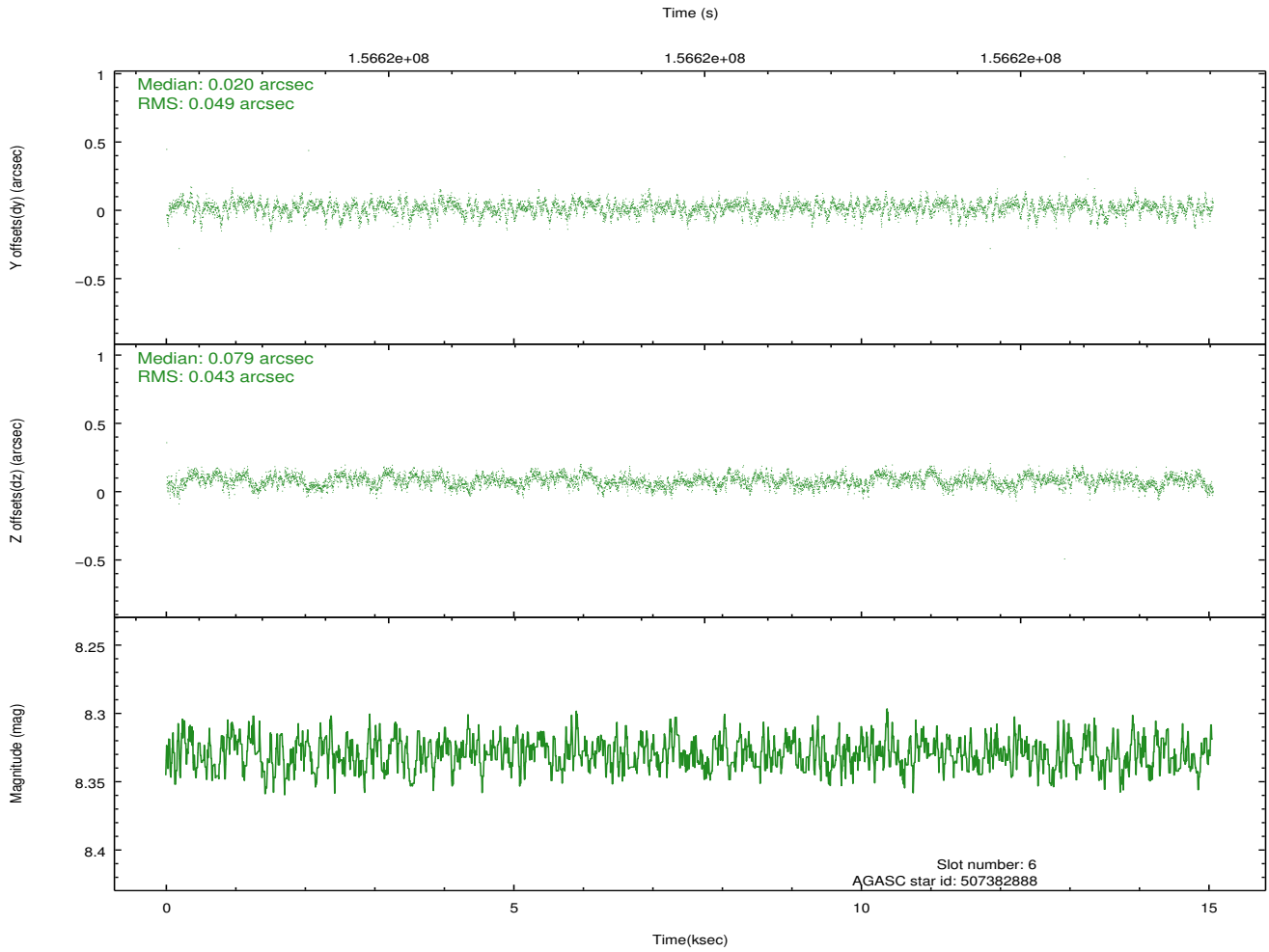
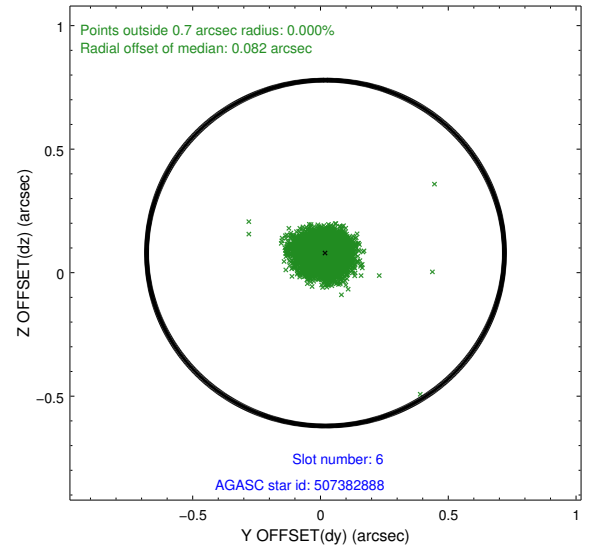
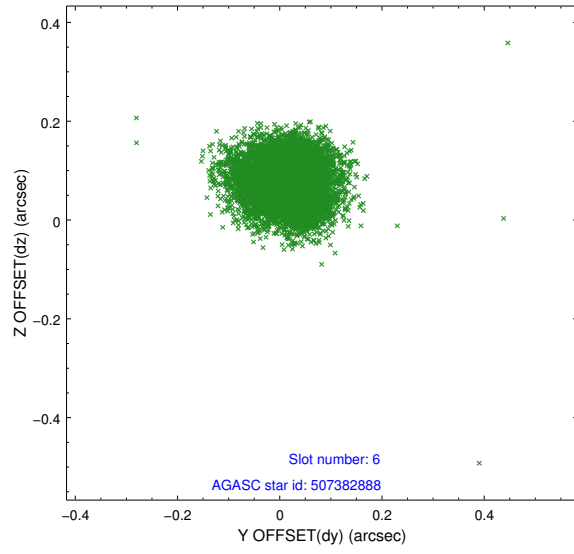
2.4.2 Slot 4



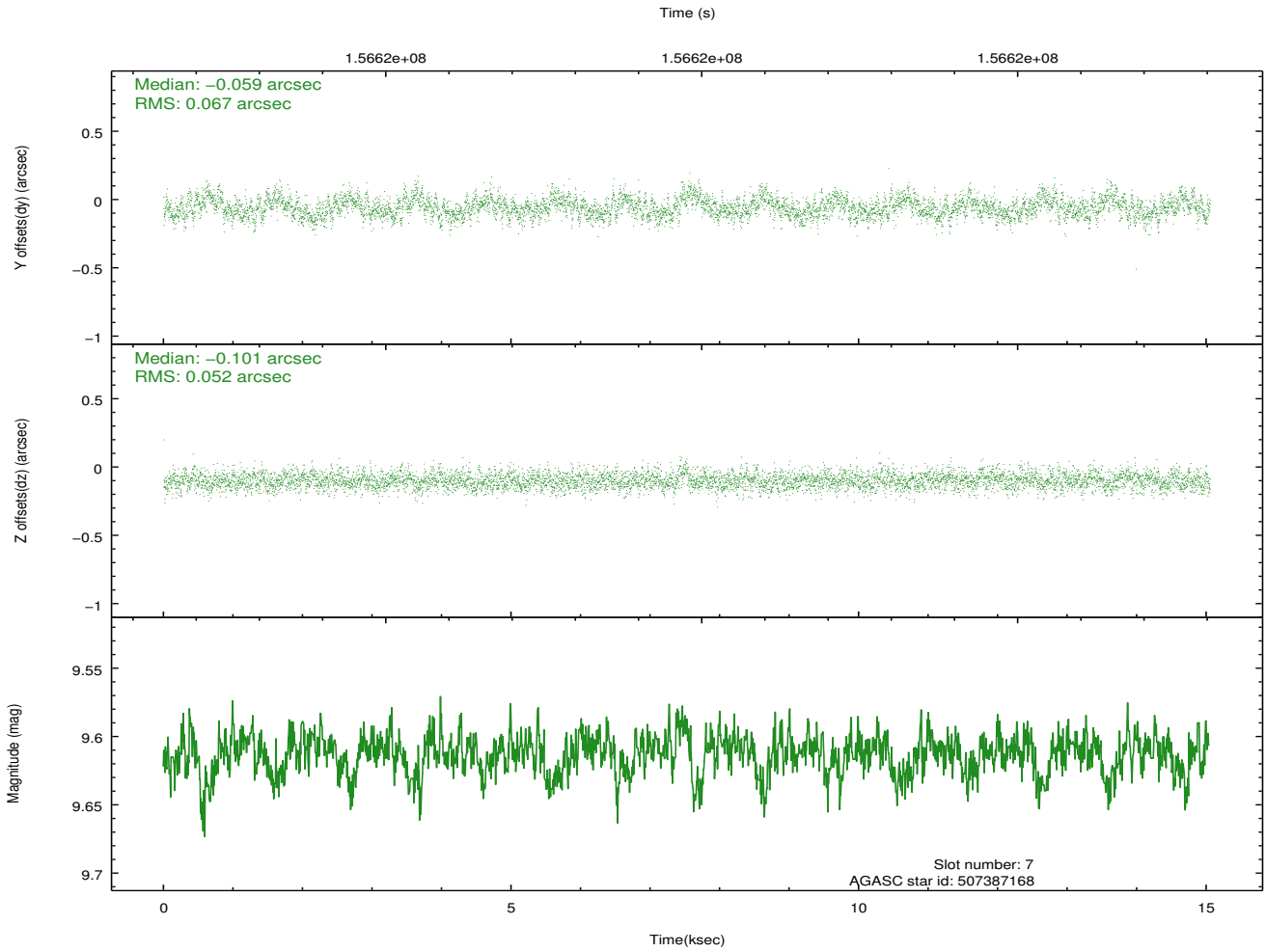
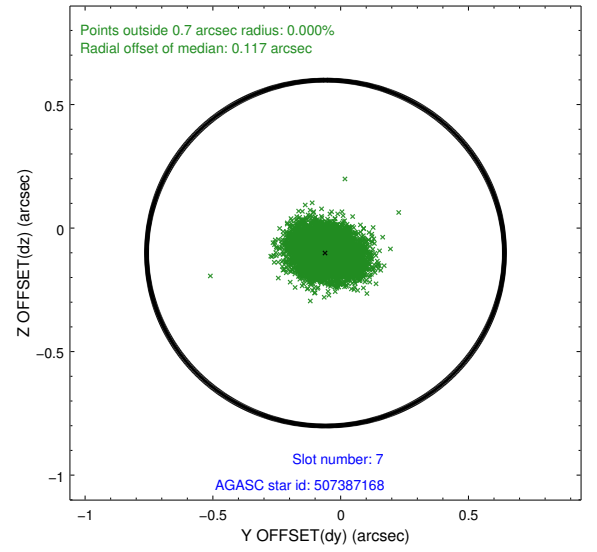
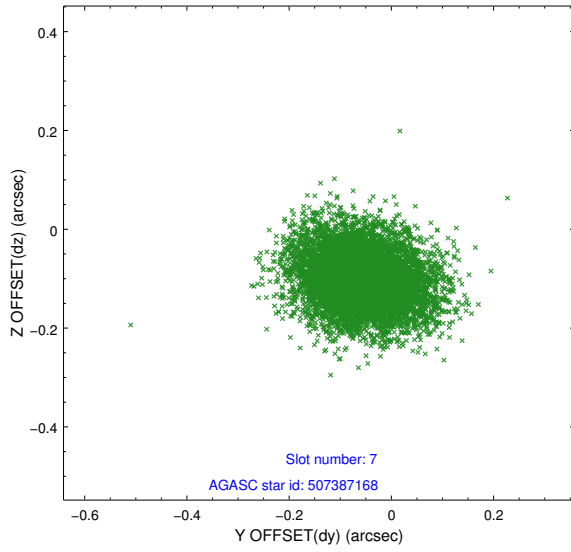
2.4.3 Slot 5



2.4.4 Slot 6

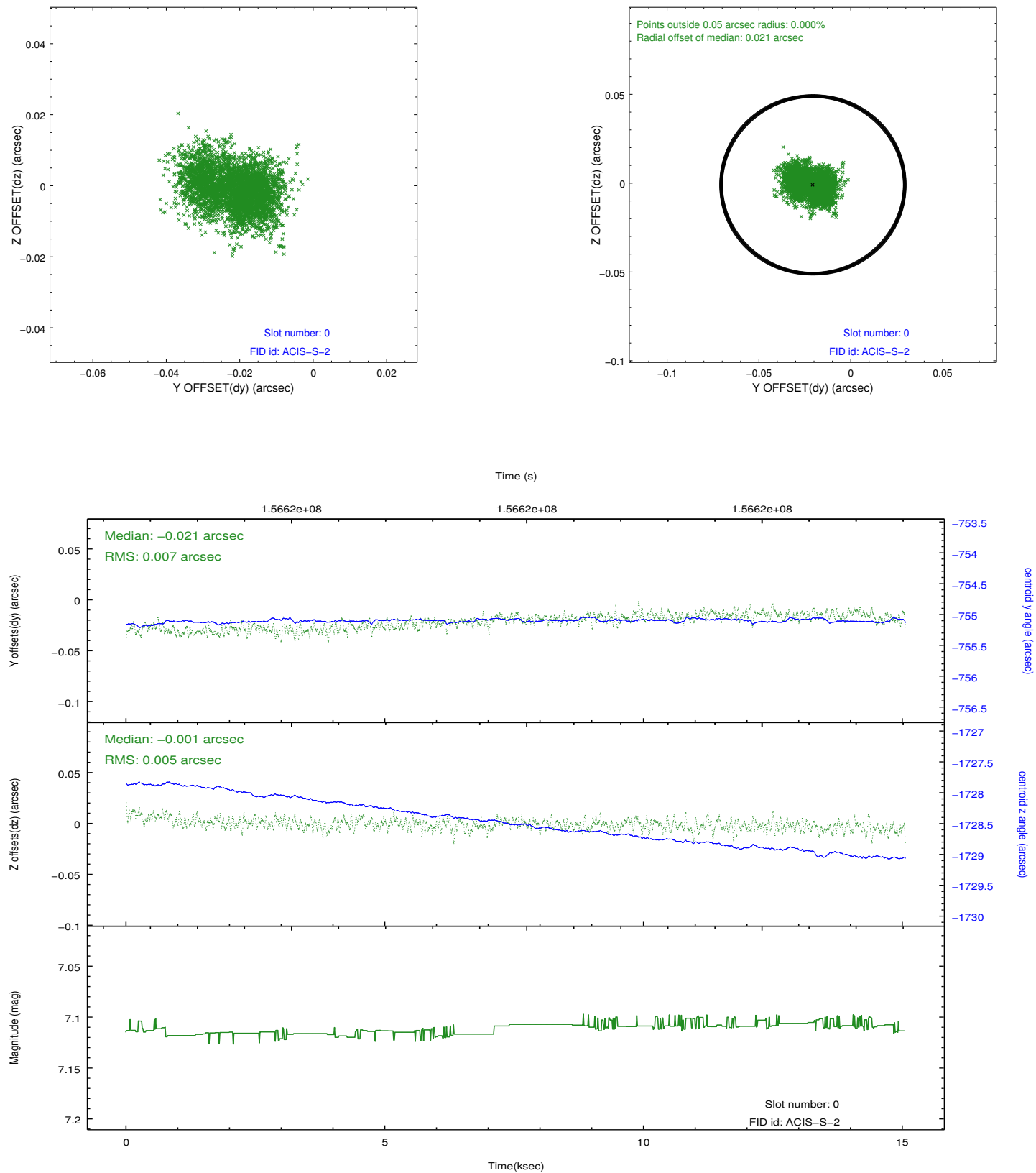


2.4.5 Slot 7

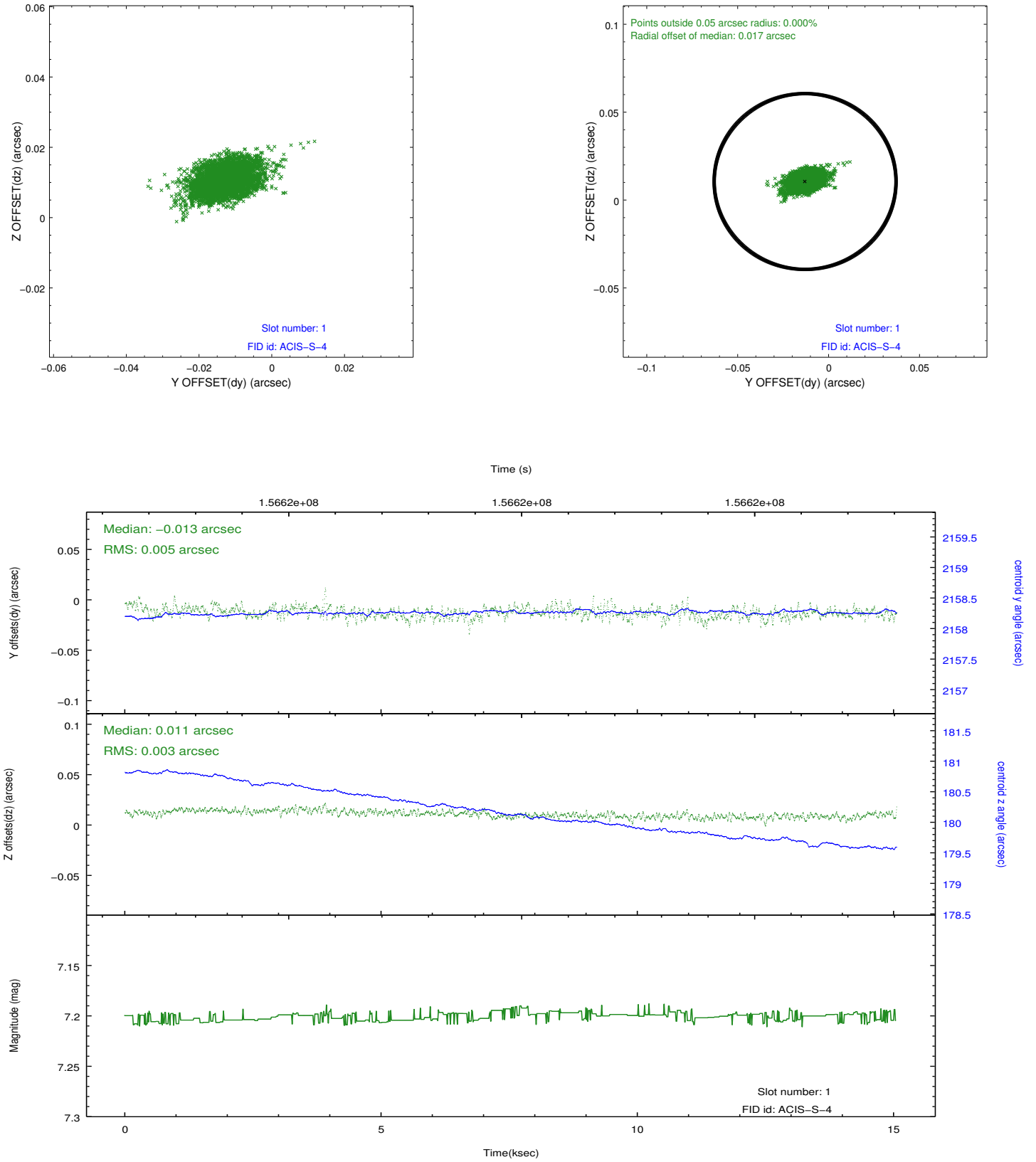


2.5 FID Slots

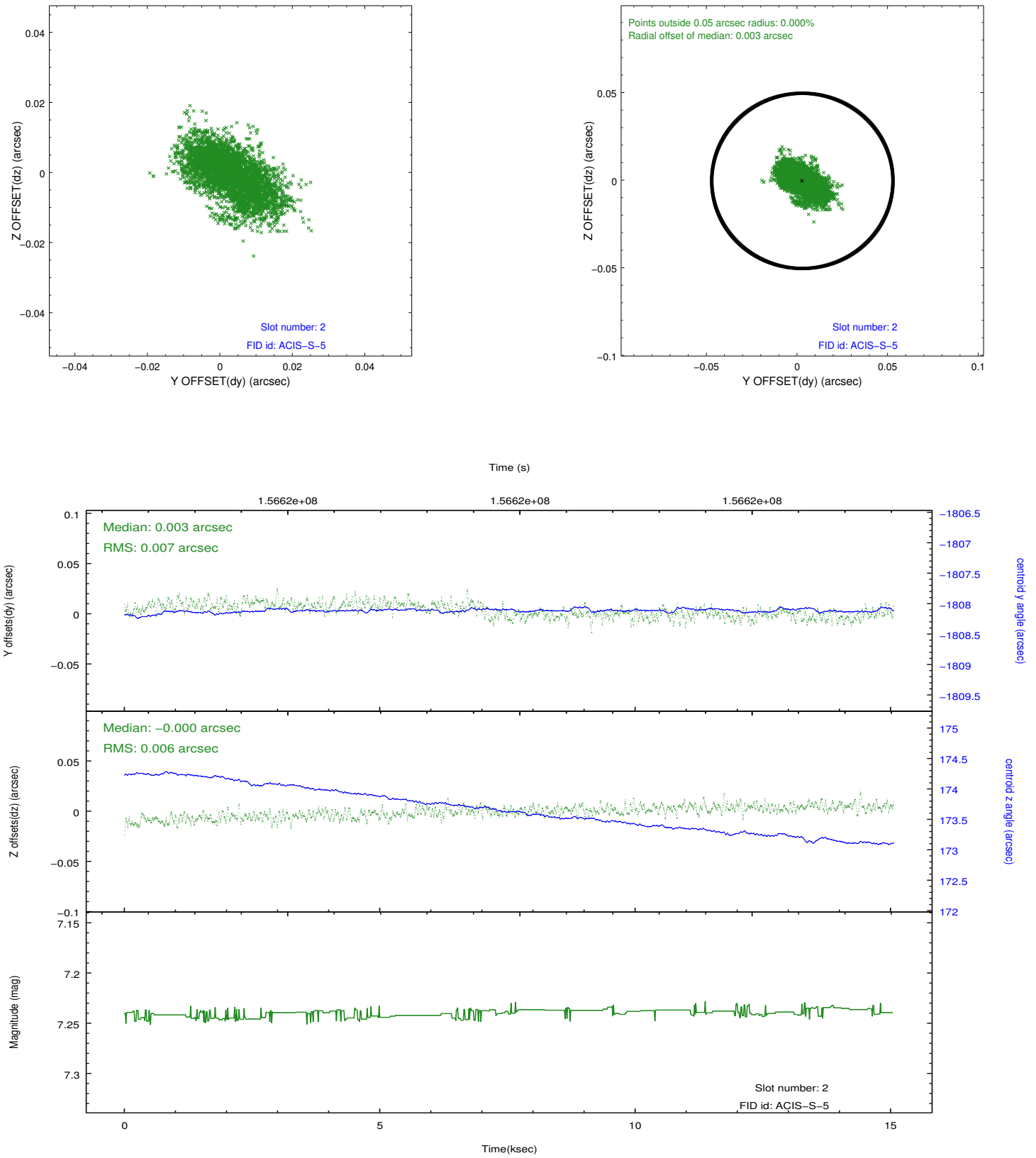
2.5.1 Slot 0



2.5.2 Slot 1



2.5.3 Slot 2



A Summary

A.1 Status

V&V Scientist	Jen Lauer
V&V Date (YYYY-MM-DD)	2012.10.31
V&V Edition	1
V&V Disposition and Status	OK
V&V Charge Time	14.911

A.2 Comments