

V&V Reference Report

L2 ASCDS Version : 7.6.8

Observation 2942 - L2 Version 001
Chandra X-Ray Center

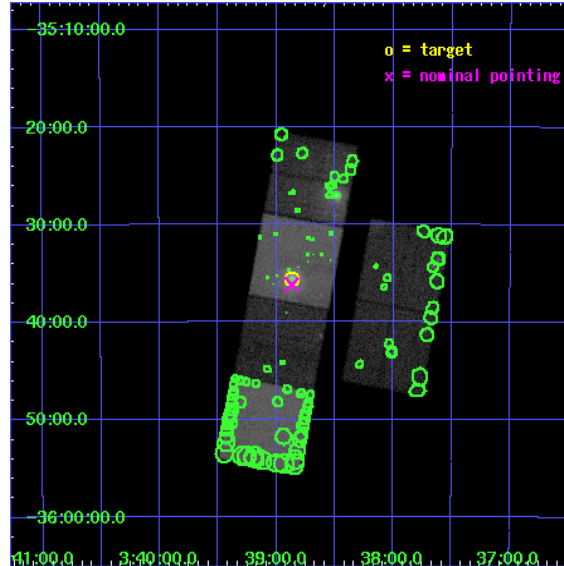
L2 Processing Date : Jul 27 2006

Contents

1	Front	2
2	OBI	3
2.1	OBI	3
2.1.1	Images	3
2.1.2	Bias	3
2.1.3	Parameters	4
2.1.4	Events	4
2.2	Compared Parameters	5
2.3	Aspect	6
2.4	Star Slots	9
2.4.1	Slot 3	9
2.4.2	Slot 4	10
2.4.3	Slot 5	11
2.4.4	Slot 6	12
2.4.5	Slot 7	13
2.5	FID Slots	14
2.5.1	Slot 0	14
2.5.2	Slot 1	15
2.5.3	Slot 2	16
3	Point Sources	17
A	Summary	18
A.1	Status	18
A.2	Comments	18

1 Front

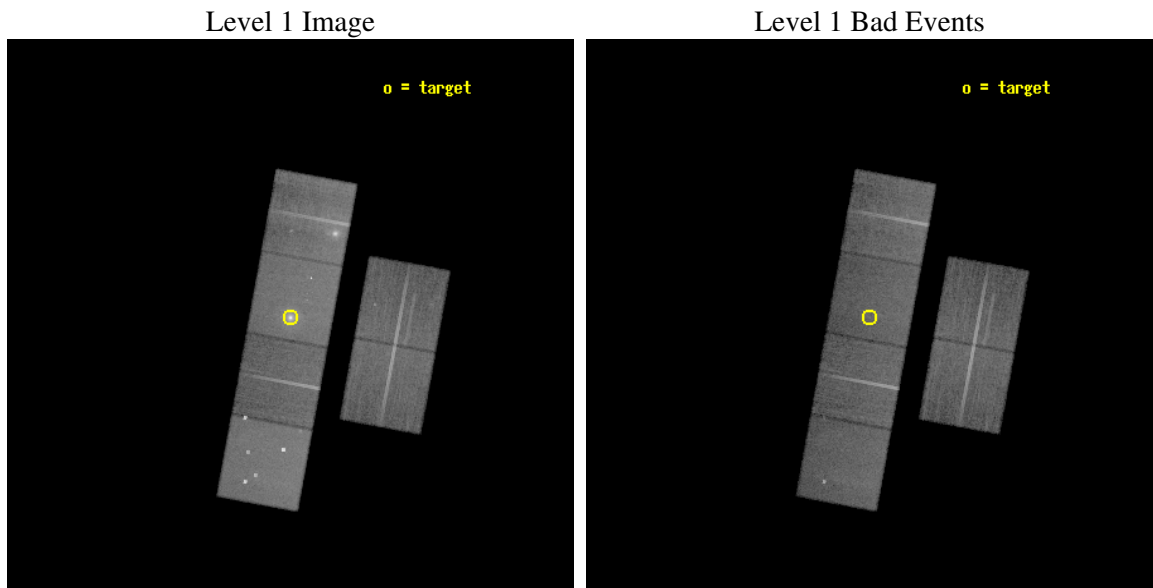
seq_num	600279
obs_id	2942
title	NGC1404: INTERACTION WITH FORNAX GAS, COOLING FLOWS, AND THE METALLICITY PROBLEM
observer	Dr. Jimmy Irwin
object	NGC1404
dtcycle	0
cycle	P
ra_targ	54.716667
dec_targ	-35.592778
ra_nom	54.716758365537
dec_nom	-35.602423007337
roll_nom	280.48100762274
revision	2
ontime	29619.19988966
livetime	29244.143746116
ontime2	29615.958919376
ontime3	29615.958919406
ontime5	29619.19988966
ontime6	29619.19988966
ontime7	29619.19988966
ontime8	29612.717949152
l2events	381401



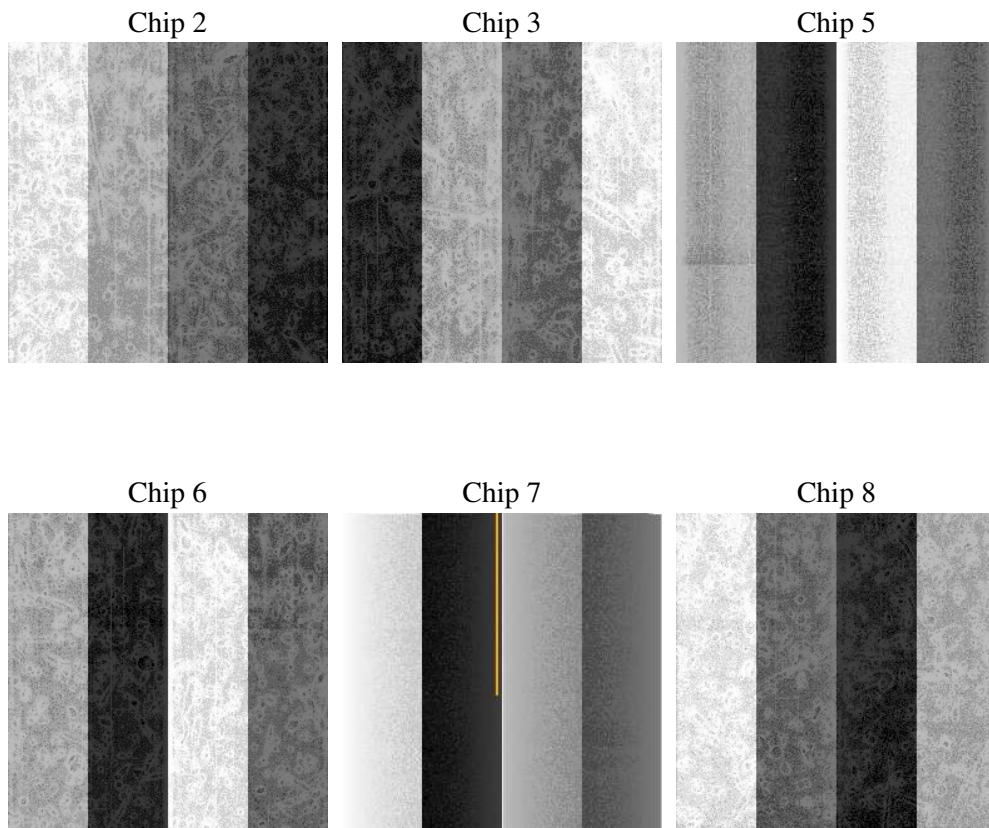
2 OBI

2.1 OBI

2.1.1 Images



2.1.2 Bias



2.1.3 Parameters

obi_num	0
ascdsver	7.6.8
caldsver	3.2.2
date	2006-07-27T15:34:47
revision	2

sched_exp_time	29866.436000
ontime	29625.986464113
ontime2	29622.745493829
ontime3	29622.745493859
ontime5	29625.986464113
ontime6	29625.986464113
ontime7	29625.986464113
ontime8	29619.504394025
l1events	1456182

2.1.4 Events

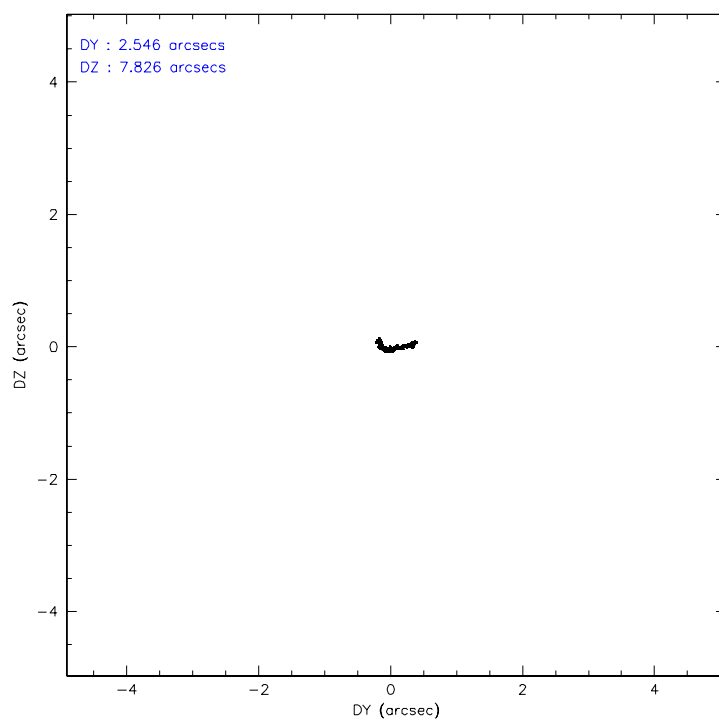
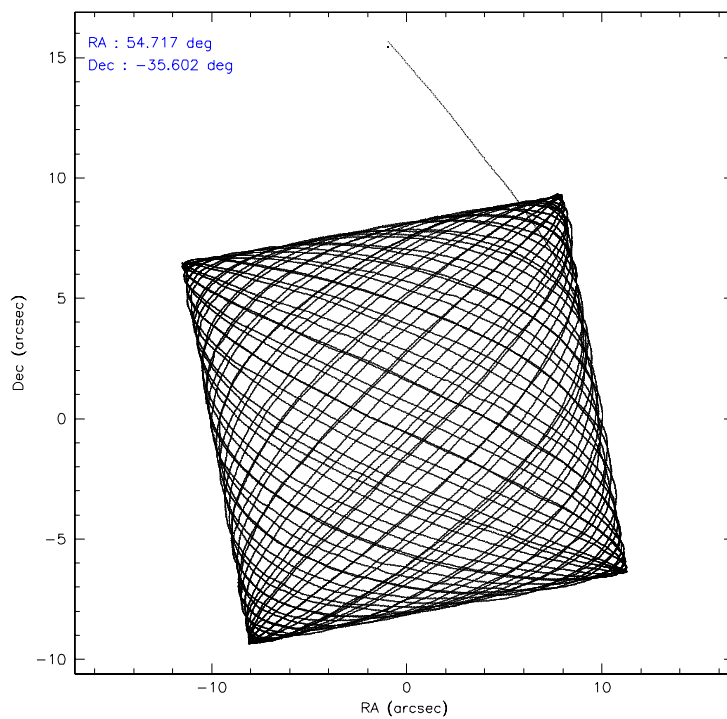
	ccd 2	ccd 3	ccd 5	ccd 6	ccd 7	ccd 8
level 1 events	199390	188963	298142	198050	296350	275287
rejected events	173848	161115	156605	170190	155673	192905
rejected %	87%	85%	52%	85%	52%	70%

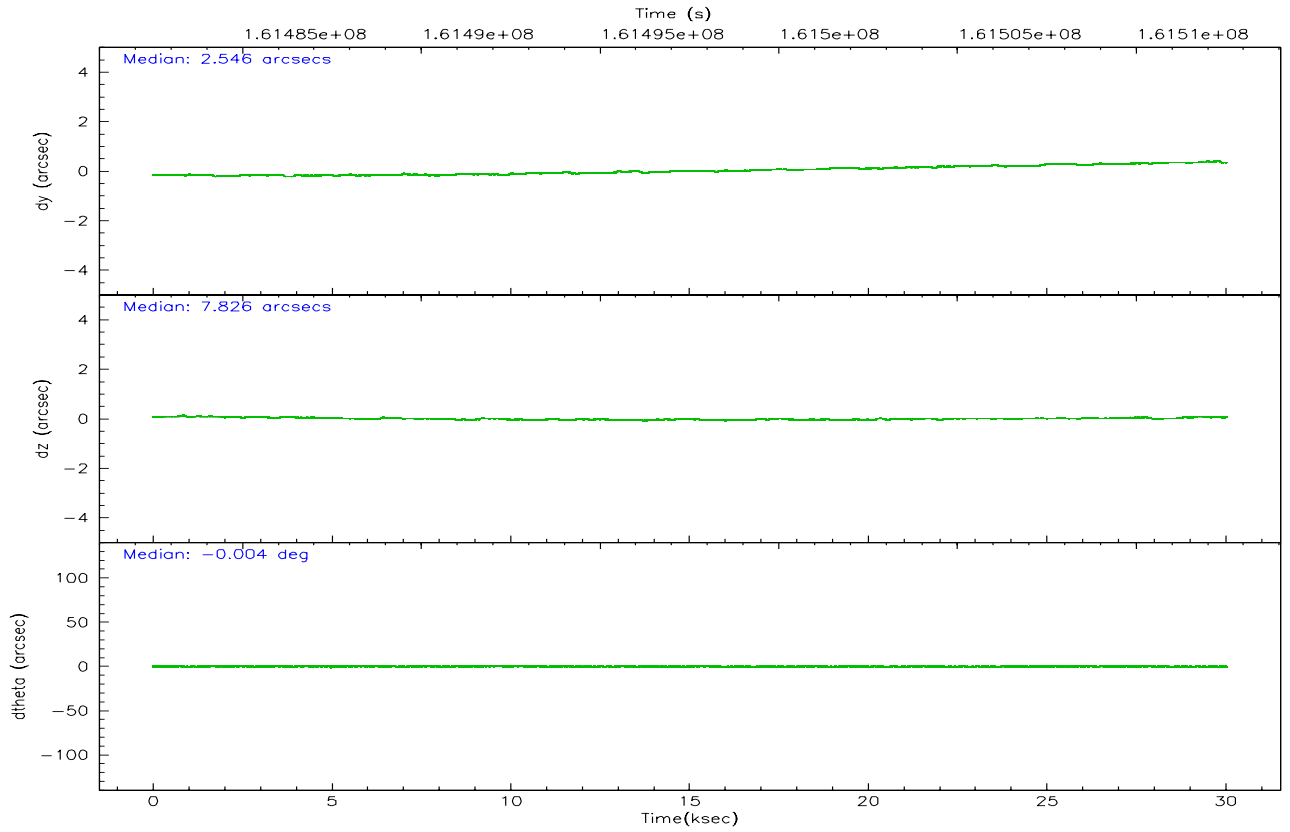
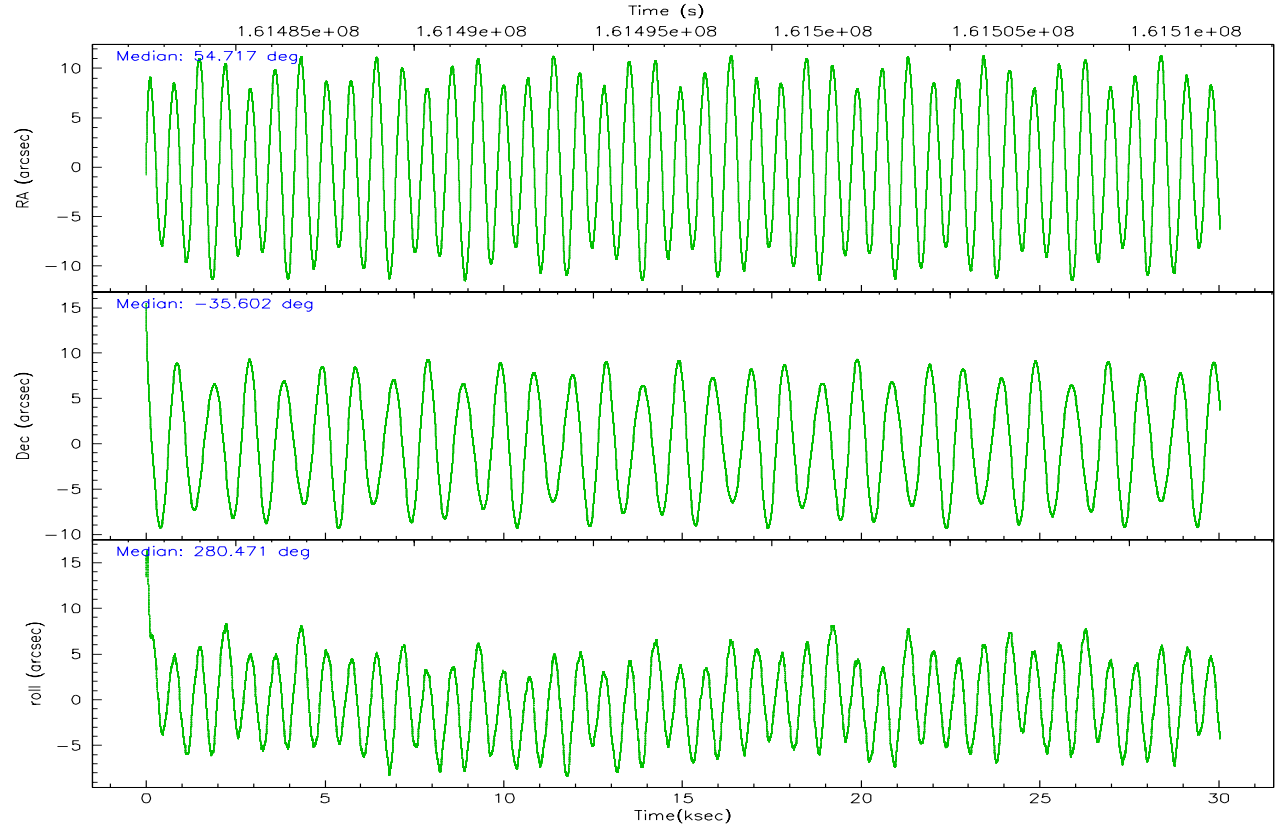
	ccd 2	ccd 3	ccd 5	ccd 6	ccd 7	ccd 8
grade 0 events	12450	14872	24115	13594	20731	44973
	6%	7%	8%	6%	6%	16%
grade 1 events	124	131	283	93	162	273
	0%	0%	0%	0%	0%	0%
grade 2 events	4862	4603	40639	5000	35927	13053
	2%	2%	13%	2%	12%	4%
grade 3 events	2189	2284	3172	2373	10092	5762
	1%	1%	1%	1%	3%	2%
grade 4 events	2302	2337	3394	2267	9789	5550
	1%	1%	1%	1%	3%	2%
grade 5 events	7445	8125	13943	8521	17358	11120
	3%	4%	4%	4%	5%	4%
grade 6 events	3743	3760	70251	4636	64173	13052
	1%	1%	23%	2%	21%	4%
grade 7 events	166275	152851	142345	161566	138118	181504
	83%	80%	47%	81%	46%	65%

2.2 Compared Parameters

Parameter	Planned	Actual	Parameter	Planned	Actual
Instrument	ACIS	ACIS	Obspar format version number	6	6
Detector	ACIS-235678	ACIS-235678	Obspar file type	PREDICTED	ACTUAL
Grating	NONE	NONE	Obspar update status	NONE	UPDATED
Data mode	FAINT	FAINT	On-chip summing requested	N	N
Observation mode	POINTING	POINTING	Subarray requested	NONE	NONE
Pointing RA	54.694677	54.71675836553692	Alternating exposures requested	N	N
Pointing Dec	-35.581975	-35.6024230073369	Primary exposure time	0.000000	3.2
Pointing Roll	280.311523	280.4810076227433			
SIM focus pos (mm)	-0.684267	-0.6828225247311905			
SIM defocus (mm)	0	0.001444936568705701			
SIM translation stage pos (mm)	-190.132523	-190.1400660498719			
SIM translation stage offset (mm)	0	0.00754346686406393			
Observation start time	161482670.184000	161481690.12293			
Observation start date	2003-02-13T00:16:46	2003-02-13T00:01:30			
Observation end time	161512536.184000	161512850.63674			
Observation end date	2003-02-13T08:34:32	2003-02-13T08:40:50			
Read mode	TIMED	TIMED			

2.3 Aspect



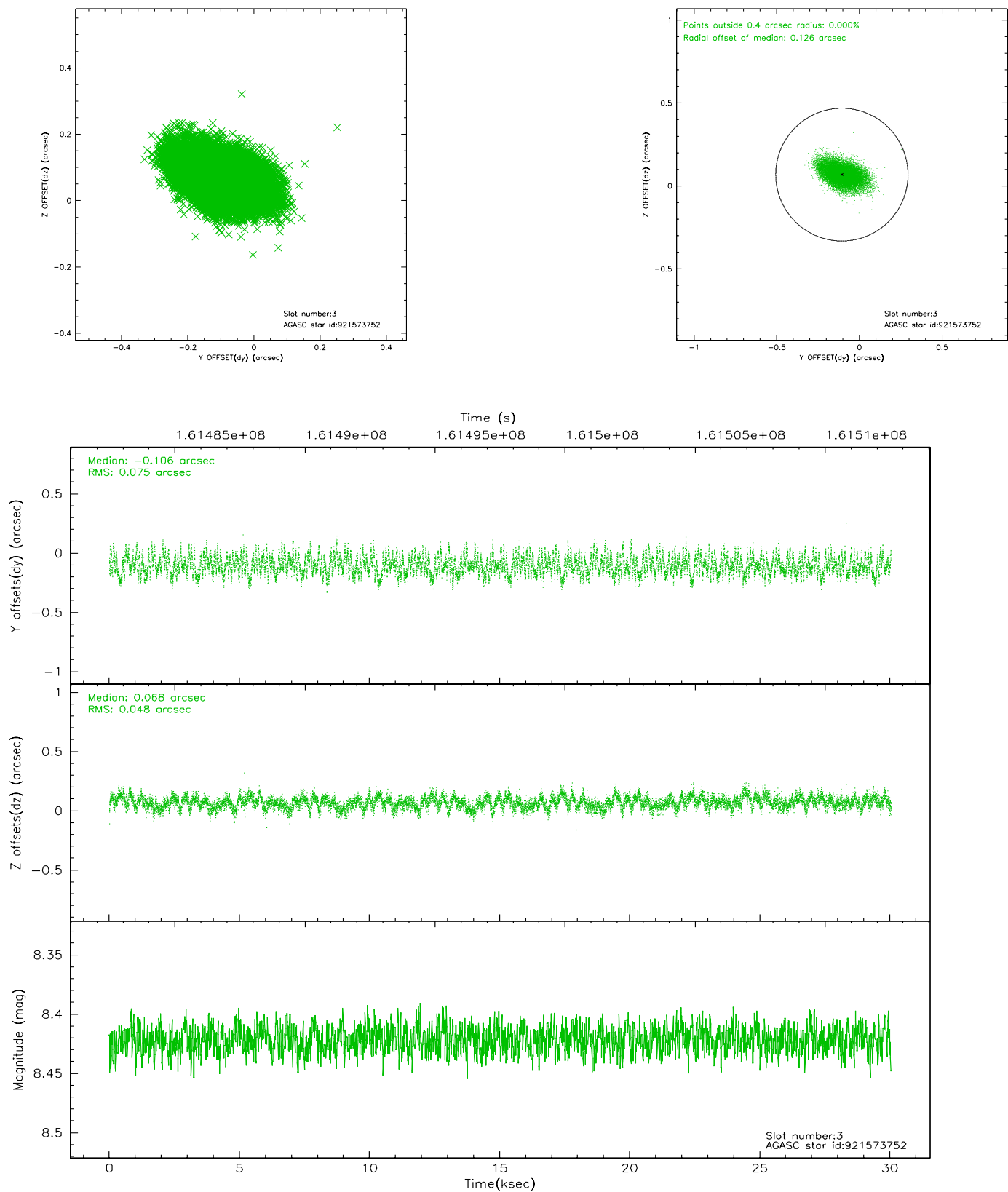


Slot Statistics

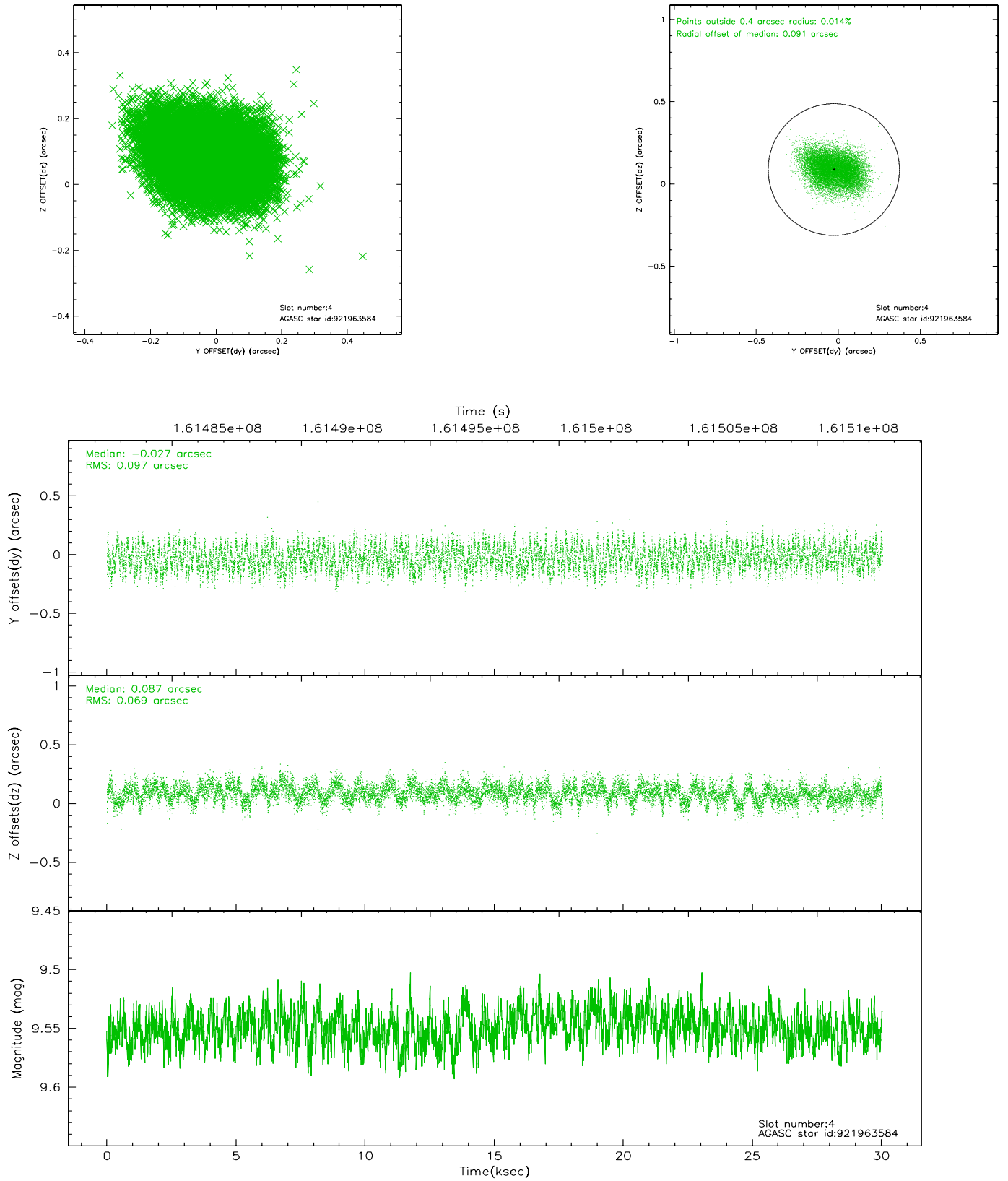
slot	status	id	mag	n_pts	med_dy	med_dz	dr1	dr2	ra	dec	mean_y	mean_z
0	FID	ACIS-S-2	7.11	7329	-0.002	0.017	0.007	0.012	0.000000	0.000000	-755.22	-1729.00
1	FID	ACIS-S-4	7.20	7329	-0.066	-0.004	0.009	0.015	0.000000	0.000000	2157.97	179.38
2	FID	ACIS-S-5	7.24	7329	0.037	-0.005	0.011	0.018	0.000000	0.000000	-1807.92	173.14
3	GUIDE	921573752	8.42	14659	-0.106	0.068	0.094	0.156	55.297577	-34.906150	-2069.98	2185.87
4	GUIDE	921963584	9.55	14655	-0.027	0.087	0.129	0.201	55.242973	-35.012099	-1725.01	1957.40
5	GUIDE	921967072	7.70	14658	0.135	-0.080	0.086	0.136	54.269247	-36.292226	2297.91	-1672.02
6	GUIDE	921970112	9.57	14646	-0.011	-0.066	0.103	0.166	54.291262	-35.695592	194.32	-1233.89
7	GUIDE	921970016	9.40	14652	0.007	-0.009	0.080	0.129	54.228536	-36.081558	1530.51	-1655.76

2.4 Star Slots

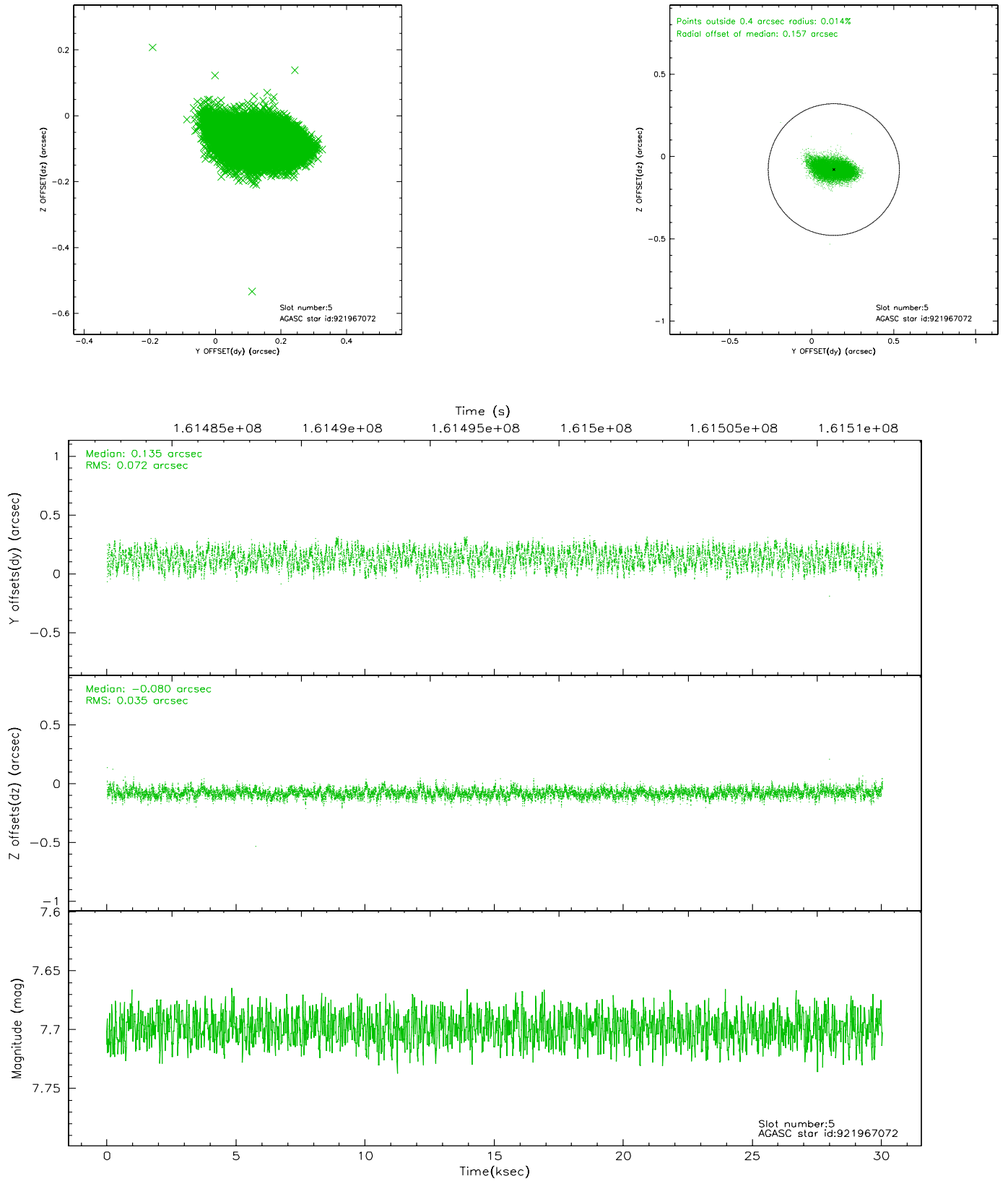
2.4.1 Slot 3



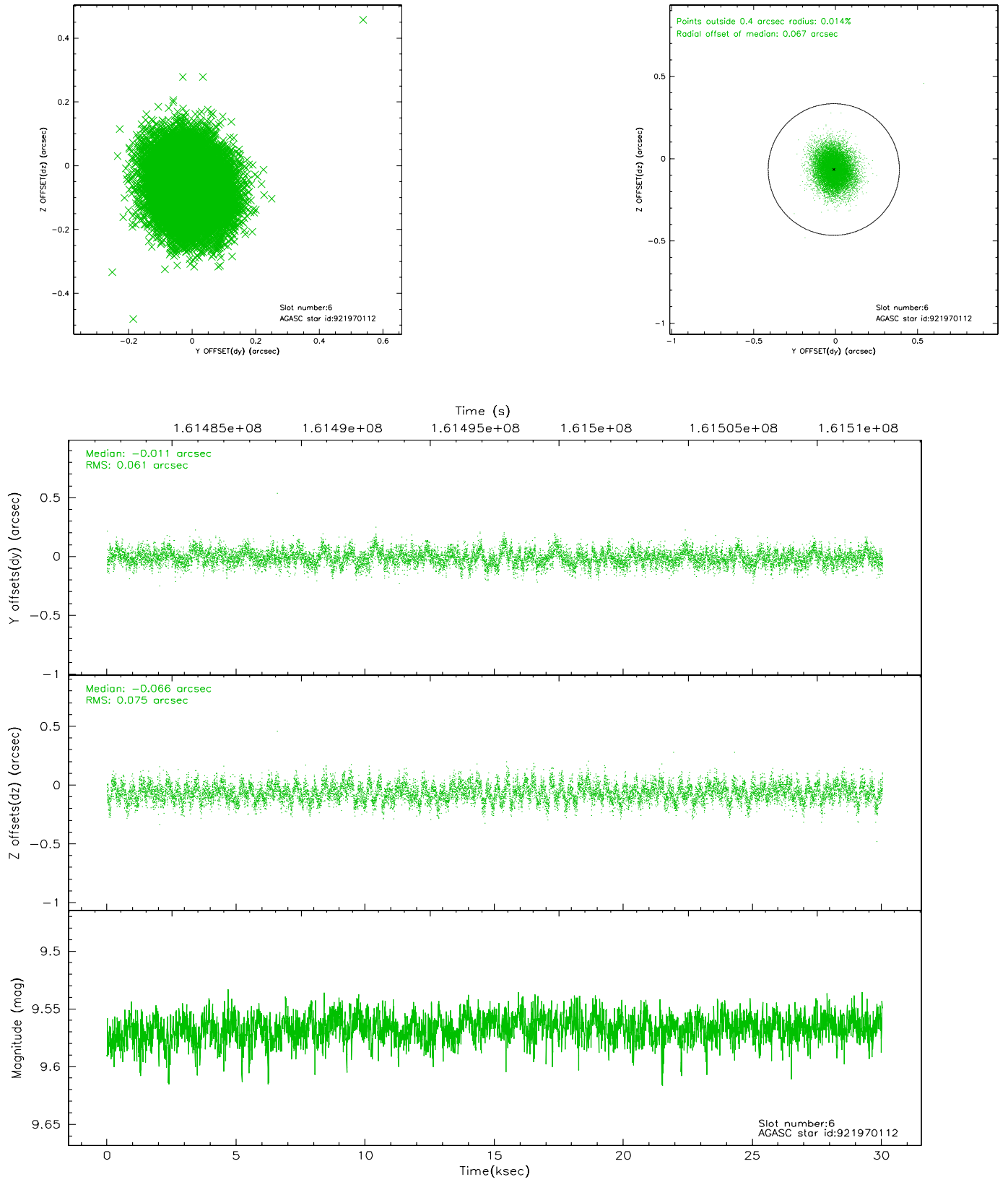
2.4.2 Slot 4



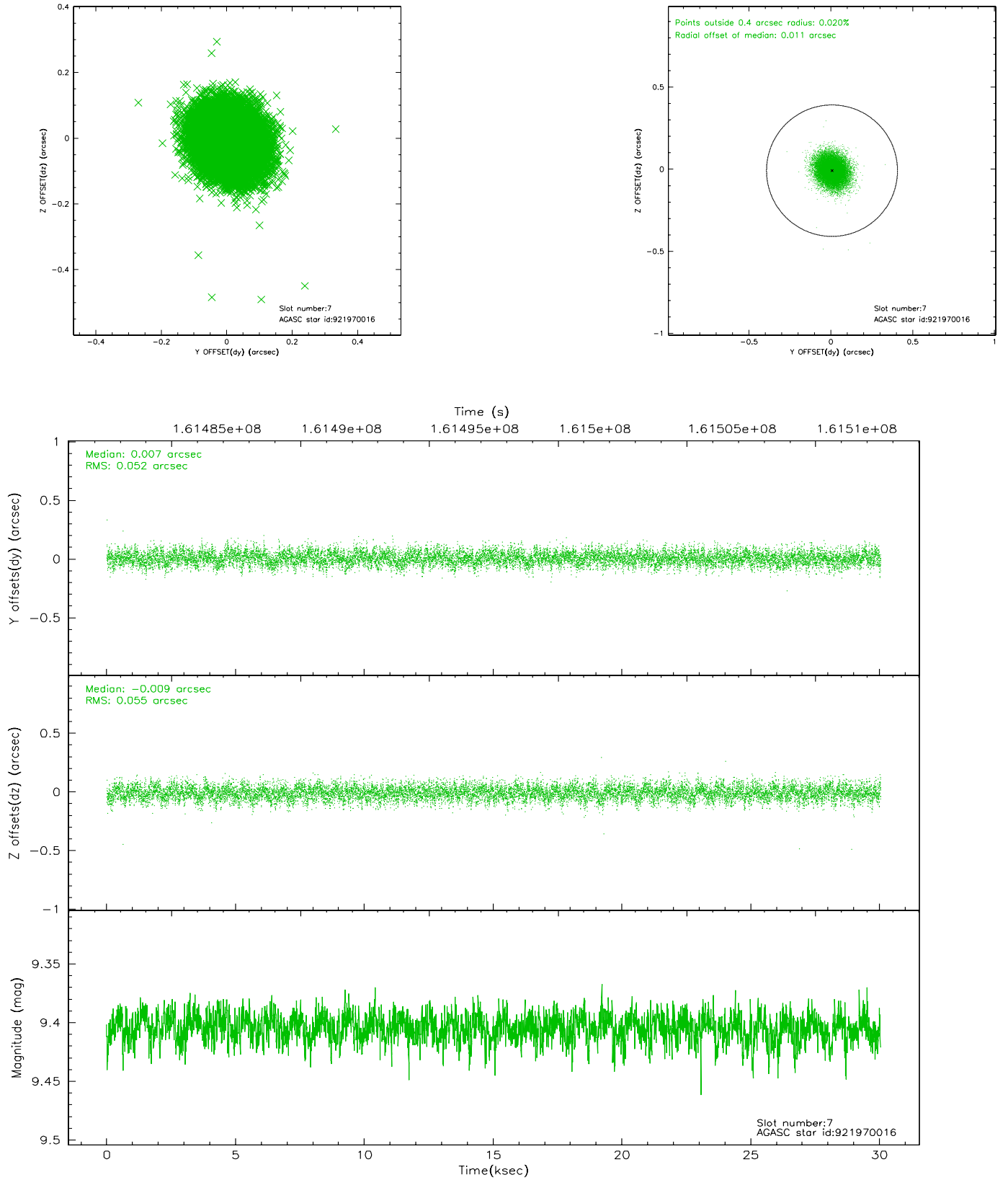
2.4.3 Slot 5



2.4.4 Slot 6

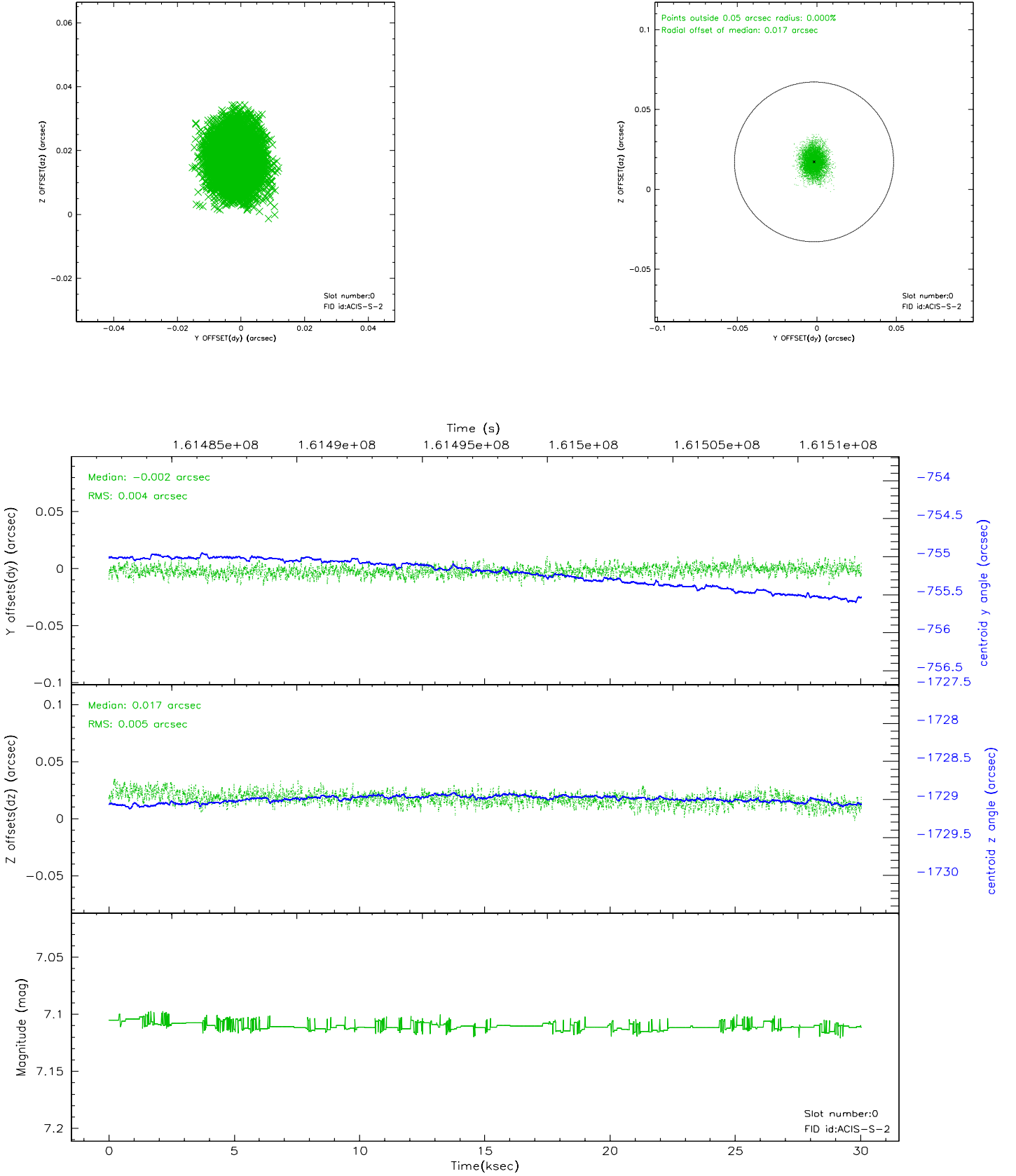


2.4.5 Slot 7

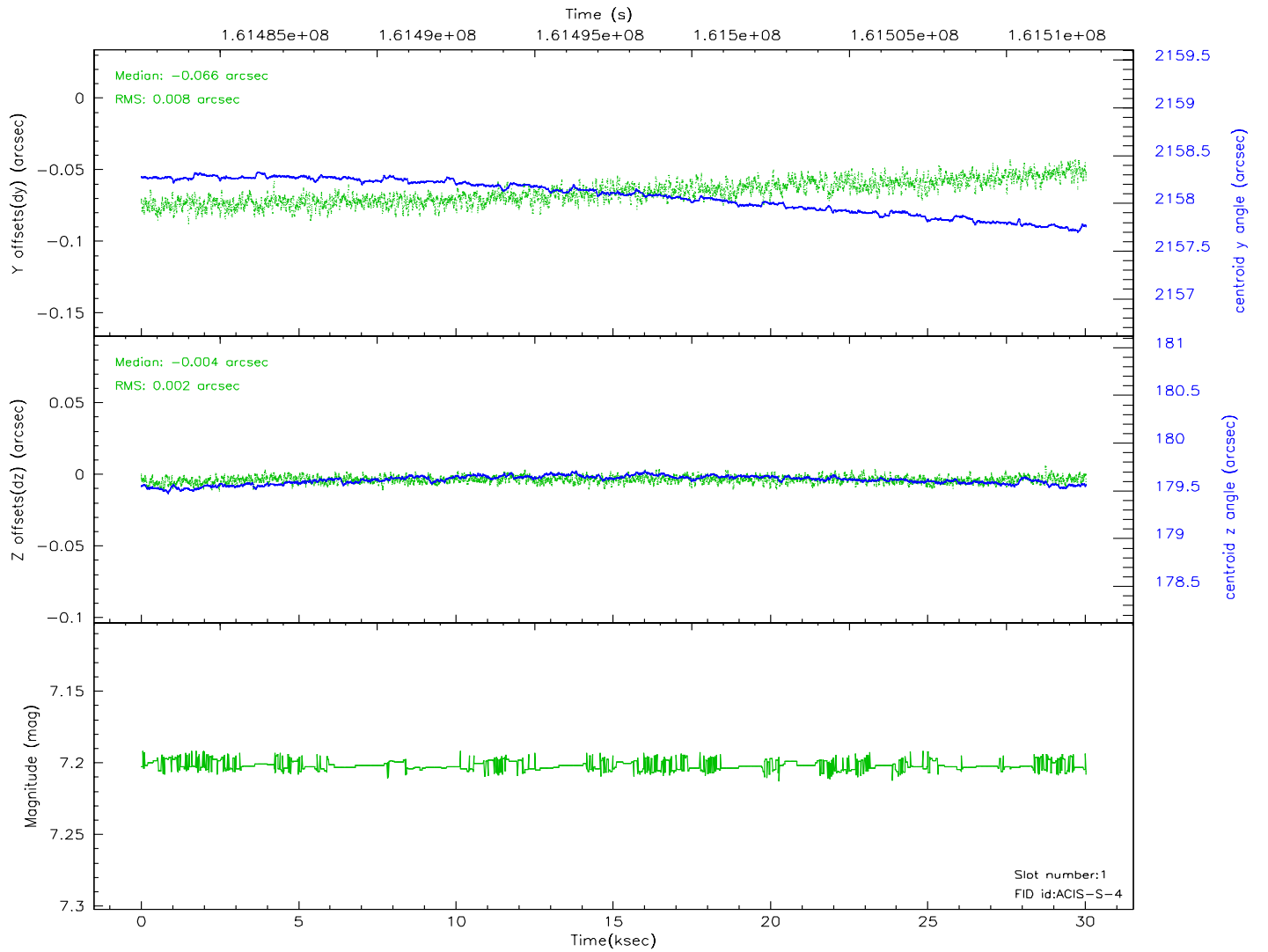
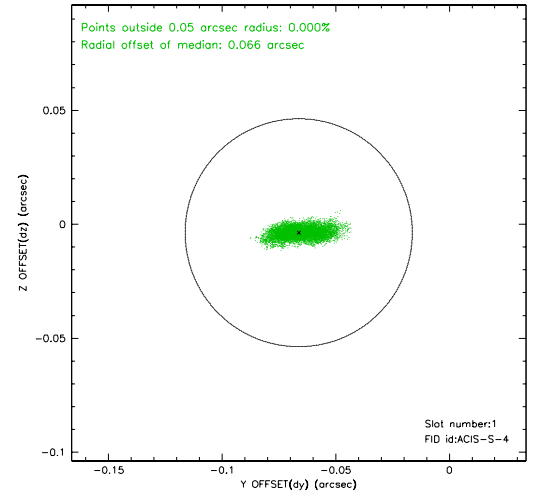
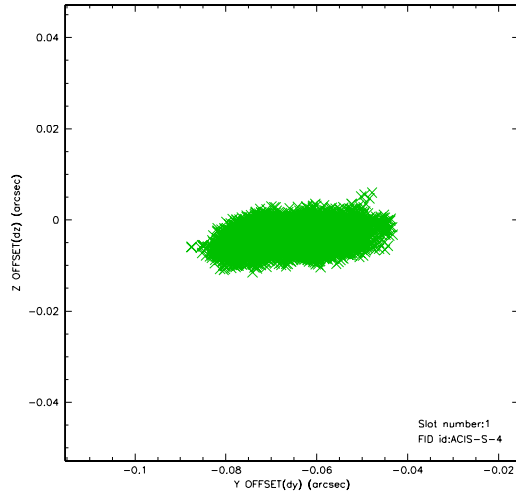


2.5 FID Slots

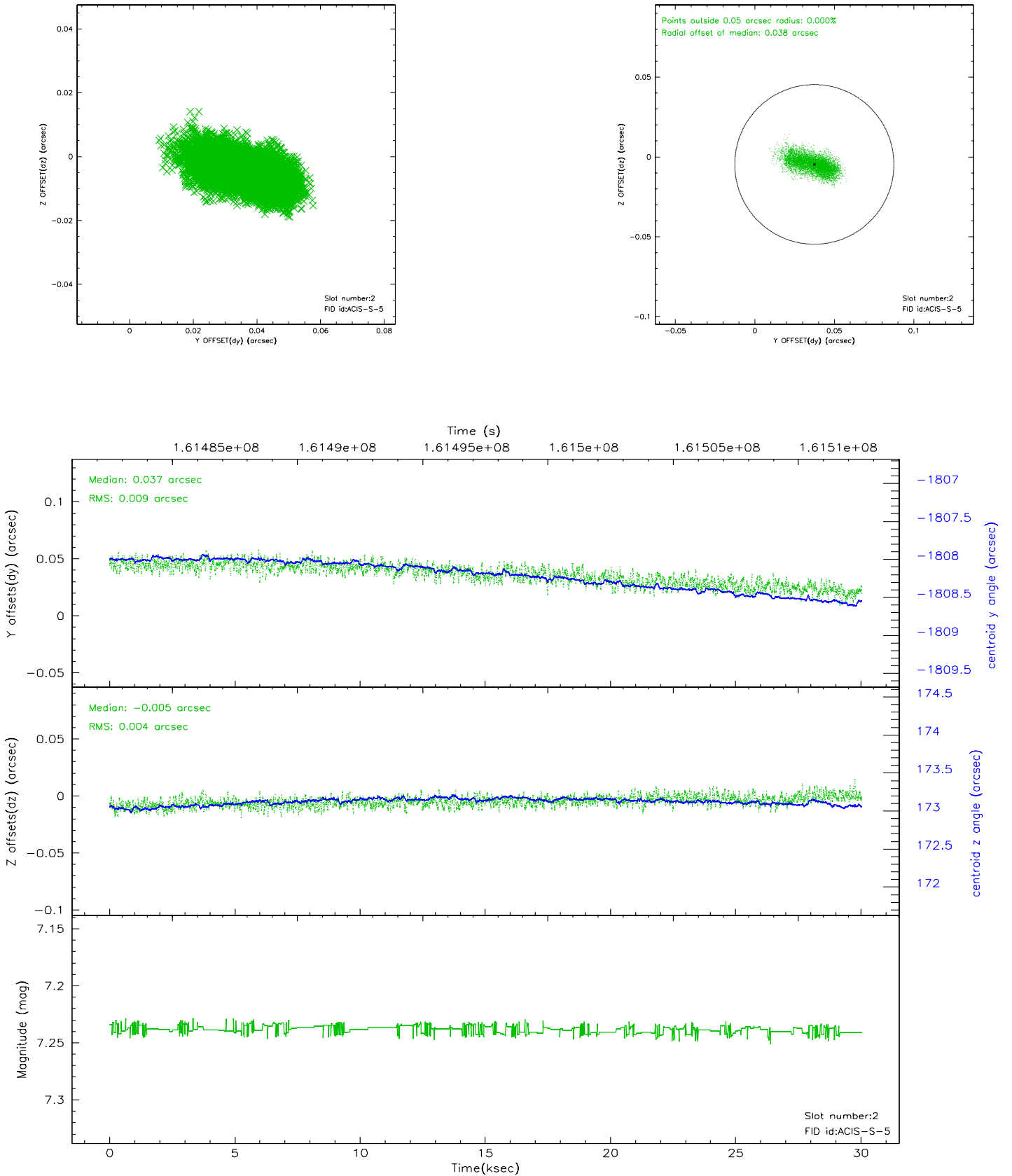
2.5.1 Slot 0



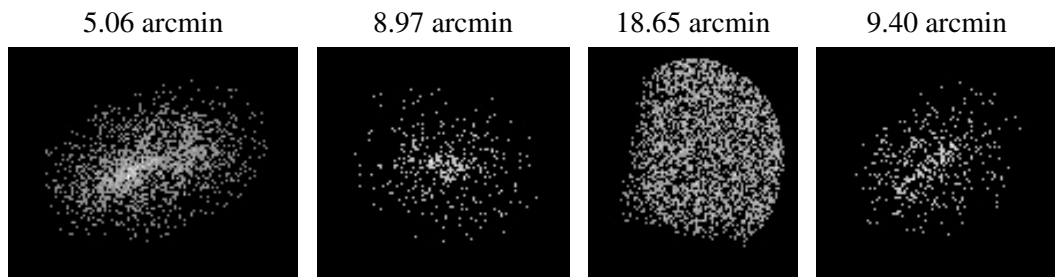
2.5.2 Slot 1



2.5.3 Slot 2



3 Point Sources



A Summary

A.1 Status

V&V Scientist	Jen Lauer
V&V Date (YYYY-MM-DD)	2006.07.27
V&V Edition	1
V&V Disposition and Status	OK
V&V Charge Time	29.622

A.2 Comments