

V&V Reference Report

L2 ASCDS Version : 8.4.5

Observation 2902 - L2 Version 3
Chandra X-Ray Center

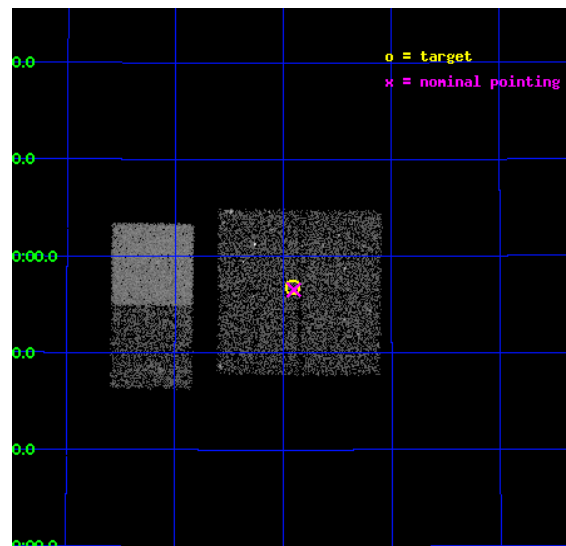
L2 Processing Date : Oct 18 2012

Contents

1	Front	2
2	OBI	3
2.1	OBI	3
2.1.1	Images	3
2.1.2	Bias	3
2.1.3	Parameters	4
2.1.4	Events	4
2.2	Compared Parameters	5
2.3	Aspect	6
2.4	Star Slots	9
2.4.1	Slot 3	9
2.4.2	Slot 4	10
2.4.3	Slot 5	11
2.4.4	Slot 6	12
2.4.5	Slot 7	13
2.5	FID Slots	14
2.5.1	Slot 0	14
2.5.2	Slot 1	15
2.5.3	Slot 2	16
A	Summary	17
A.1	Status	17
A.2	Comments	17

1 Front

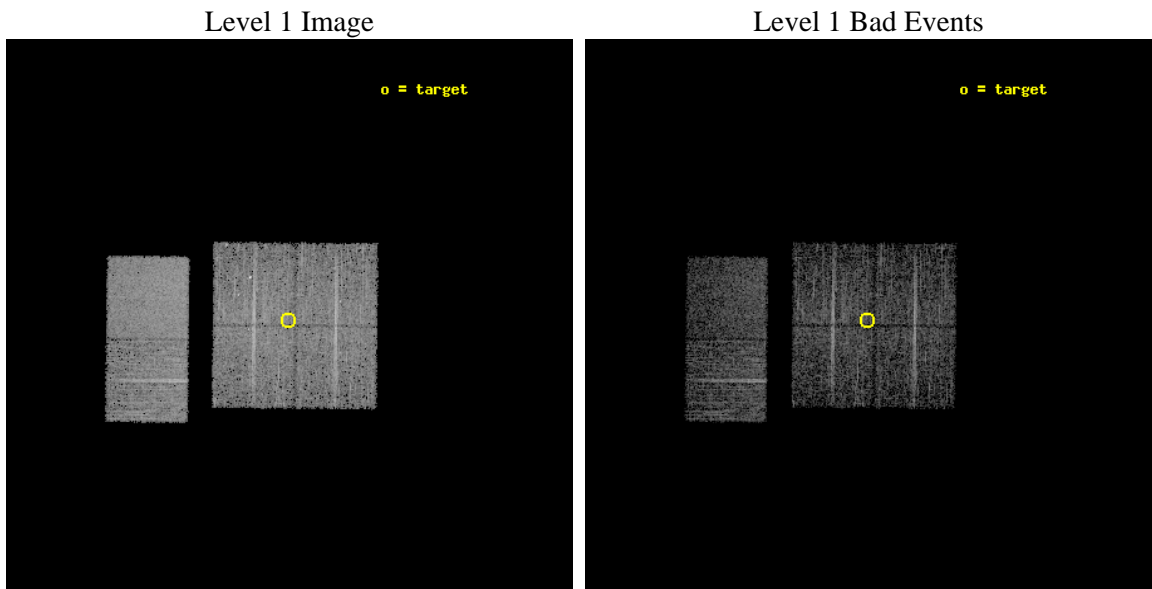
seq_num	600239	Sequence number
obs_id	2902	Observation id
title	SEARCHING FOR X-RAY TRANSIENTS IN M31 WITH CHANDRA AND HST	Proposa
observer	Dr. Michael Garcia	Principal investigator
object	M31-T6	Source name
dtcycle	0	
cycle	P	events from which exps? Prim/Second/Both
ra_targ	10.477792	Observer's specified target RA [deg]
dec_targ	40.946528	Observer's specified target Dec [deg]
ra_nom	10.475603999141	Nominal RA [deg]
dec_nom	40.942302299946	Nominal Dec [deg]
roll_nom	270.56258524696	Nominal Roll [deg]
revision	3	Processing version of data
ontime	4755.1999822855	Sum of GTIs [s]
livetime	4694.9867768721	Livetime [s]
ontime0	4755.1999822855	Sum of GTIs [s]
ontime1	4755.1999822855	Sum of GTIs [s]
ontime2	4755.1999822855	Sum of GTIs [s]
ontime3	4755.1999822855	Sum of GTIs [s]
ontime6	4755.1999822855	Sum of GTIs [s]
ontime7	4755.1999822855	Sum of GTIs [s]
l2events	33292	Number of level 2 events



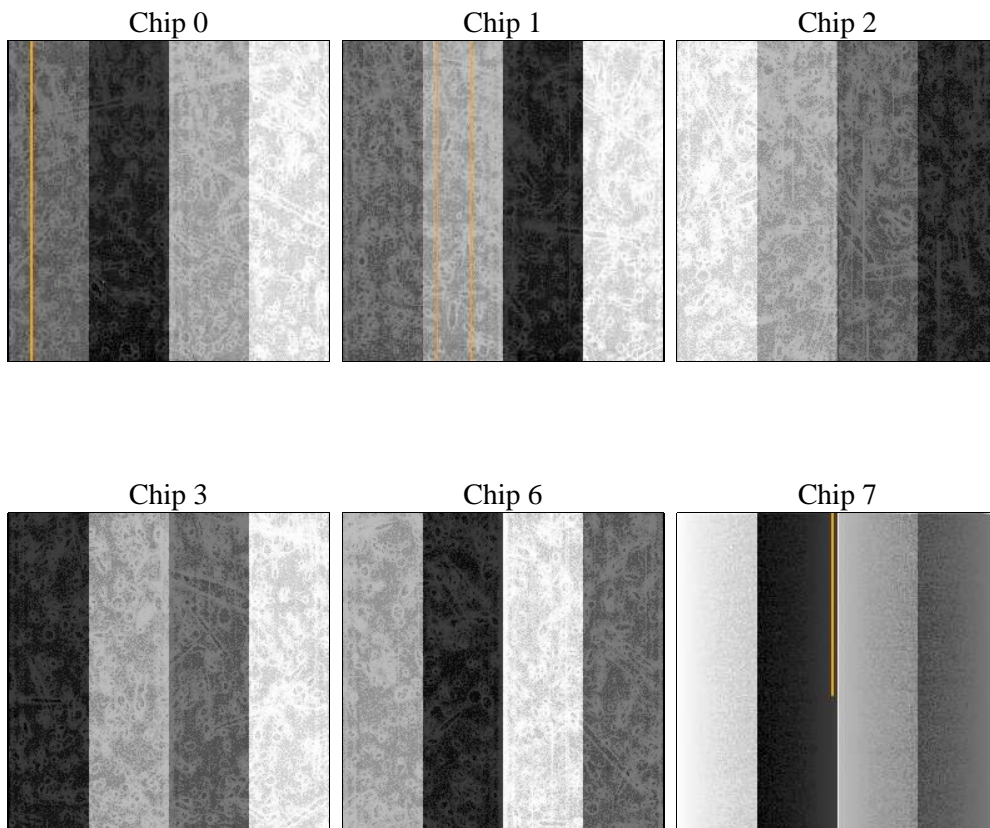
2 OBI

2.1 OBI

2.1.1 Images



2.1.2 Bias



2.1.3 Parameters

obi_num	0	Obi number	sched_exp_time	5000.000000	[s] Scheduled observation exposure time
ascdsver	8.4.5	Processing system revision	ontime	4755.1999822855	Sum of GTIs [s]
caldsver	4.5.2	 	ontime0	4755.1999822855	Sum of GTIs [s]
date	2012-10-18T13:53:18	Date and time of file creation	ontime1	4755.1999822855	Sum of GTIs [s]
revision	3	Processing version of data	ontime2	4755.1999822855	Sum of GTIs [s]
			ontime3	4755.1999822855	Sum of GTIs [s]
			ontime6	4755.1999822855	Sum of GTIs [s]
			ontime7	4755.1999822855	Sum of GTIs [s]
			l1events	188777	Number of level 1 events

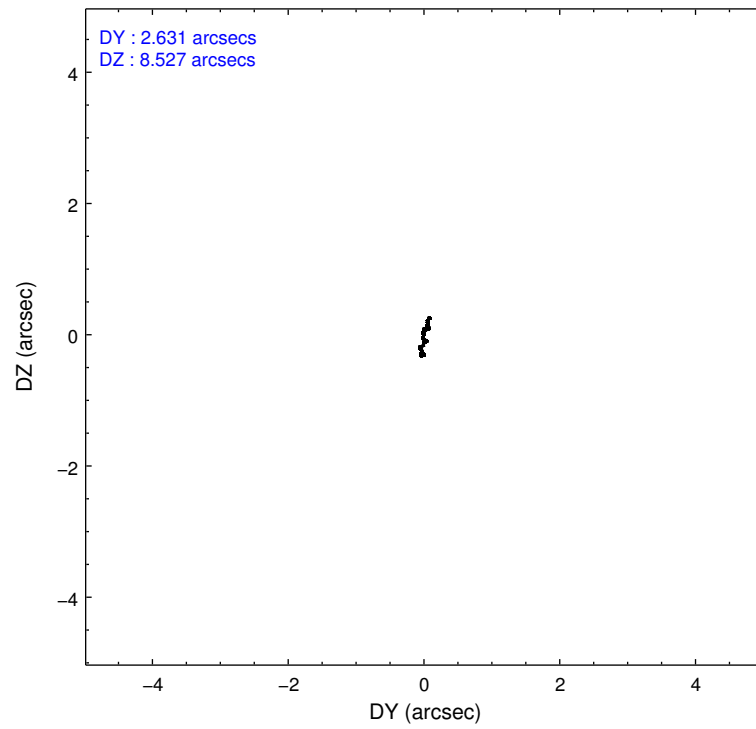
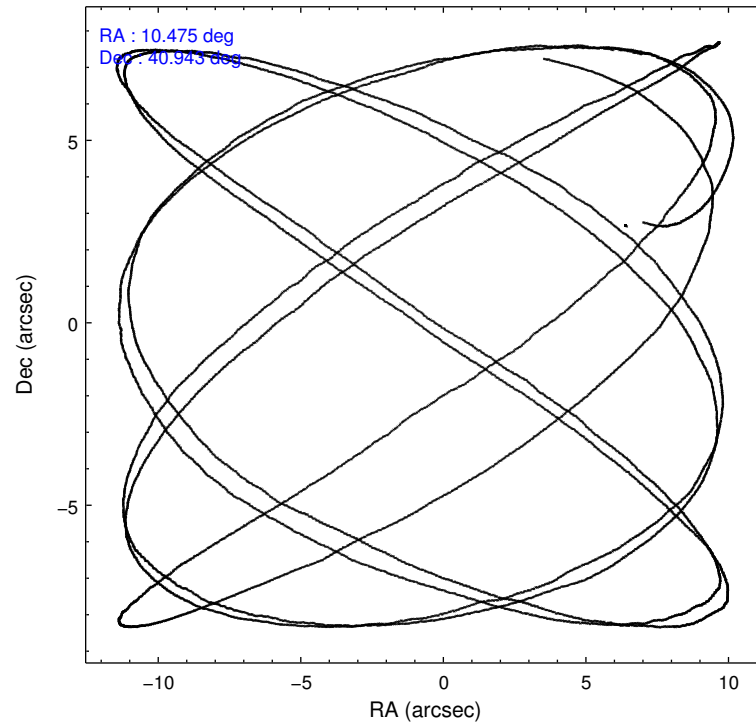
2.1.4 Events

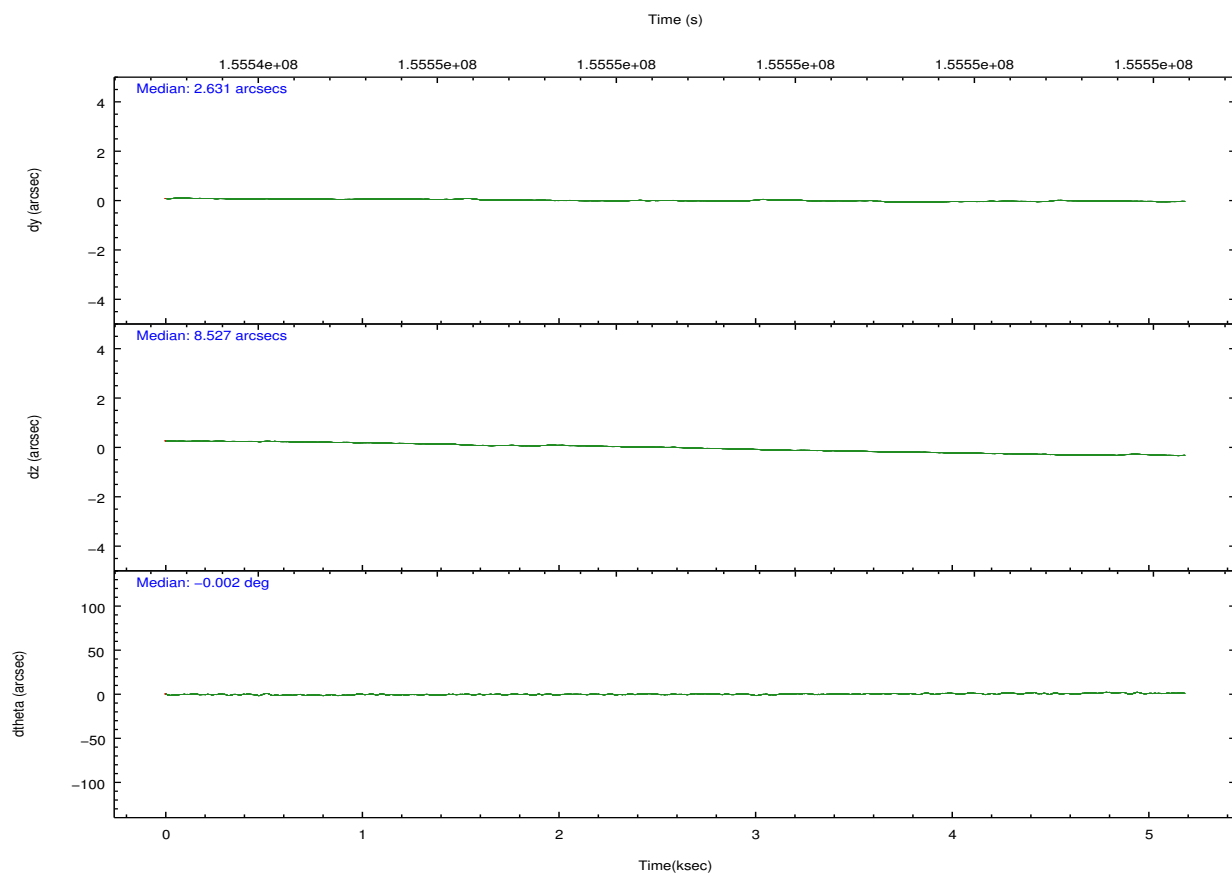
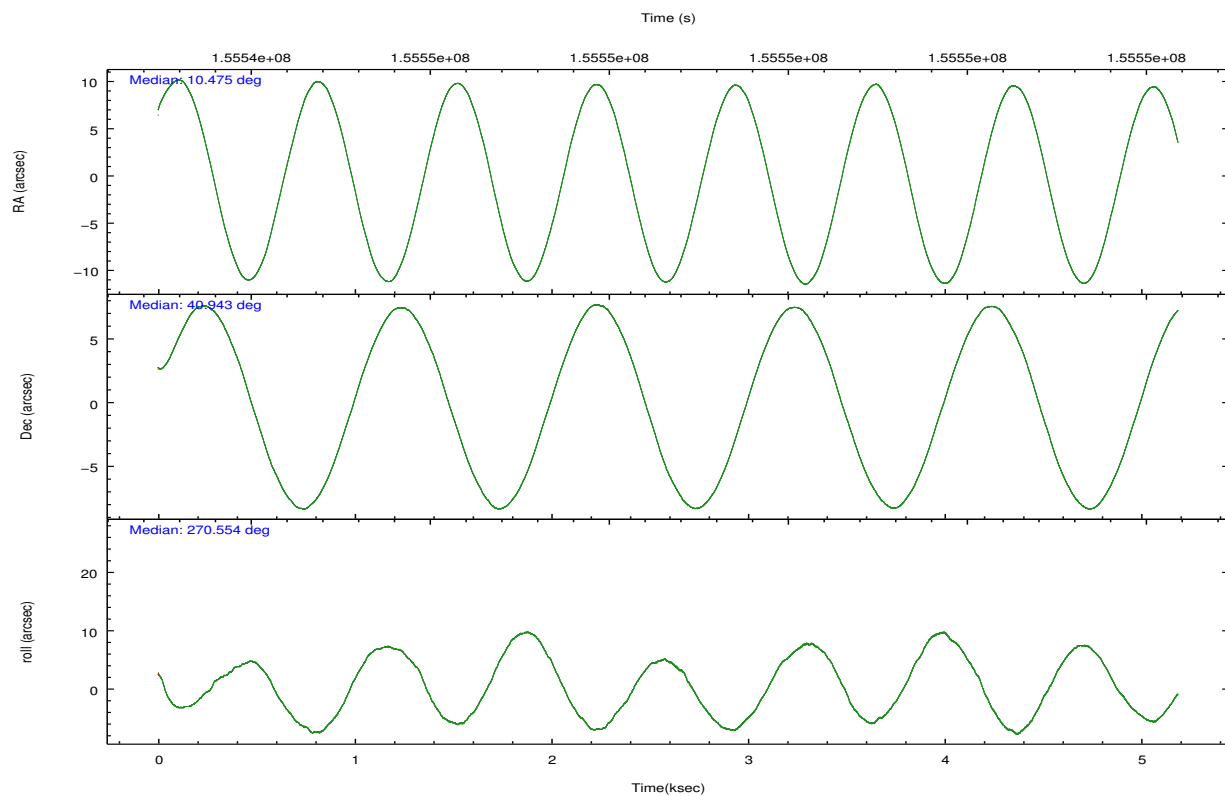
	ccd 0	ccd 1	ccd 2	ccd 3	ccd 6	ccd 7		ccd 0	ccd 1	ccd 2	ccd 3	ccd 6	ccd 7
level 1 events	27260	29055	28723	31626	32241	39872	grade 0 events	1668	1860	1706	2506	1449	1565
rejected events	23408	24790	25123	26976	28689	23350		6%	6%	5%	7%	4%	3%
rejected %	85%	85%	87%	85%	88%	58%	grade 1 events	15	21	18	31	19	37
								0%	0%	0%	0%	0%	0%
							grade 2 events	800	837	682	751	702	3240
								2%	2%	2%	2%	2%	8%
							grade 3 events	389	384	320	370	334	1453
								1%	1%	1%	1%	1%	3%
							grade 4 events	377	392	334	389	380	1461
								1%	1%	1%	1%	1%	3%
							grade 5 events	1244	1223	1174	1308	1369	3786
								4%	4%	4%	4%	4%	9%
							grade 6 events	625	794	564	637	687	8803
								2%	2%	1%	2%	2%	22%
							grade 7 events	22142	23544	23925	25634	27301	19527
								81%	81%	83%	81%	84%	48%

2.2 Compared Parameters

Parameter	Planned	Actual	Parameter	Planned	Actual
Instrument	ACIS	ACIS	Obspar format version number	7	7
Detector	ACIS-012367	ACIS-012367	Obspar file type	PREDICTED	ACTUAL
Grating	NONE	NONE	Obspar update status	NONE	UPDATED
Data mode	FAINT	FAINT	Number of optional ACIS chips dropped	0	0
Observation mode	POINTING	POINTING	On-chip summing requested	N	N
[deg] Pointing RA	10.456888	10.47560399914096	Subarray requested	NONE	NONE
[deg] Pointing Dec	40.965760	40.94230229994599	Alternating exposures requested	N	N
[deg] Pointing Roll	270.366155	270.5625852469627	[s] Primary exposure time	0.000000	3.2
[s] Window start time (MET)	155174464.184000	155174464.184000			
[s] Window stop time (MET)	155779264.184000	155779264.184000			
[mm] SIM focus pos	-0.782348	-0.7809083437167272			
[mm] SIM defocus	0	0.001439871863259334			
[mm] SIM translation stage pos	-233.592463	-233.5874344608287			
[mm] SIM translation stage offset	0	-0.005018542100998502			
[s] Observation start time (MET)	155544920.184000	155543879.22451			
Observation start date	2002-12-06T06:54:16	2002-12-06T06:37:59			
[s] Observation end time (MET)	155549920.184000	155550612.96229			
Observation end date	2002-12-06T08:17:36	2002-12-06T08:30:12			
Read mode	TIMED	TIMED			

2.3 Aspect



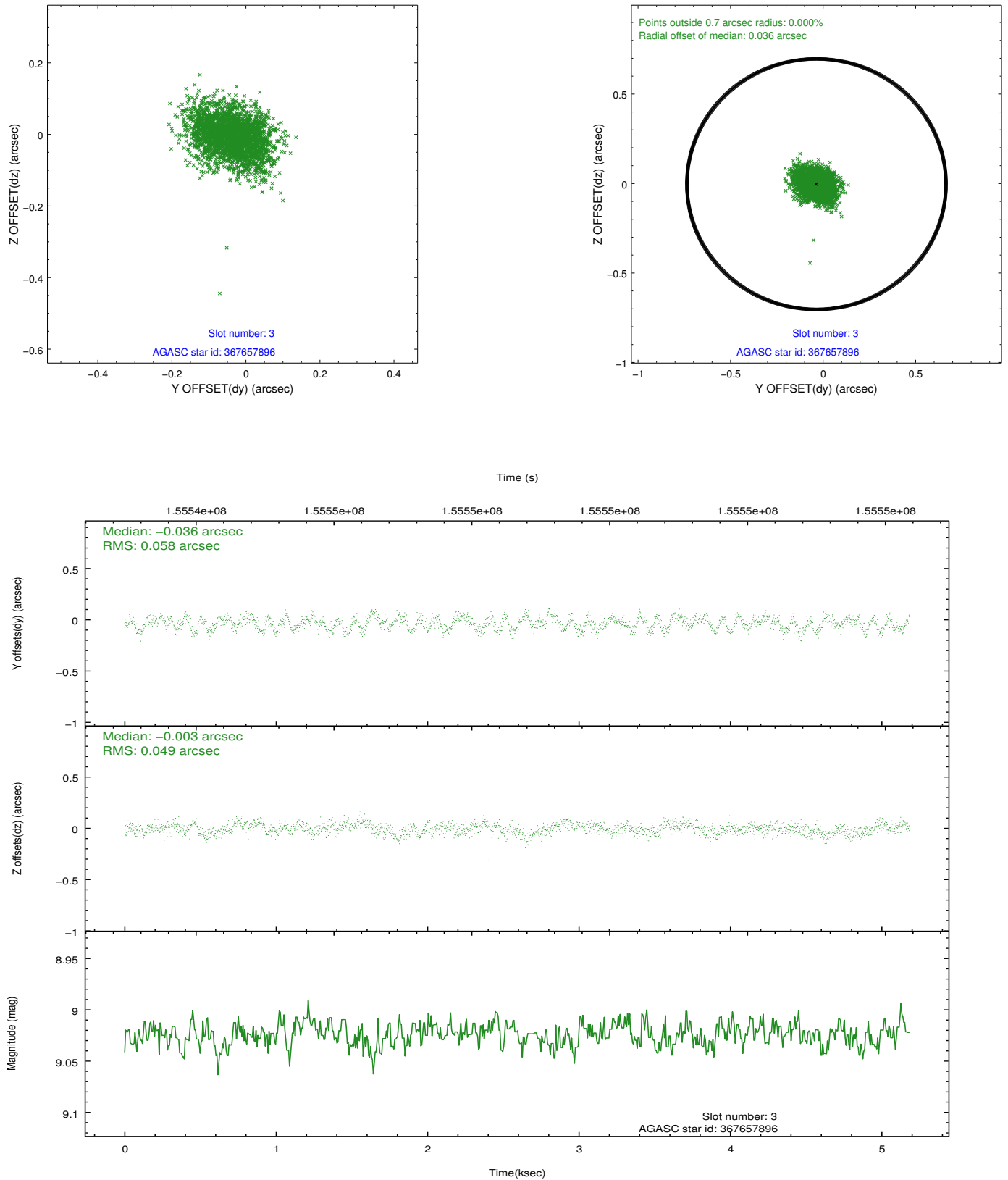


Slot Statistics

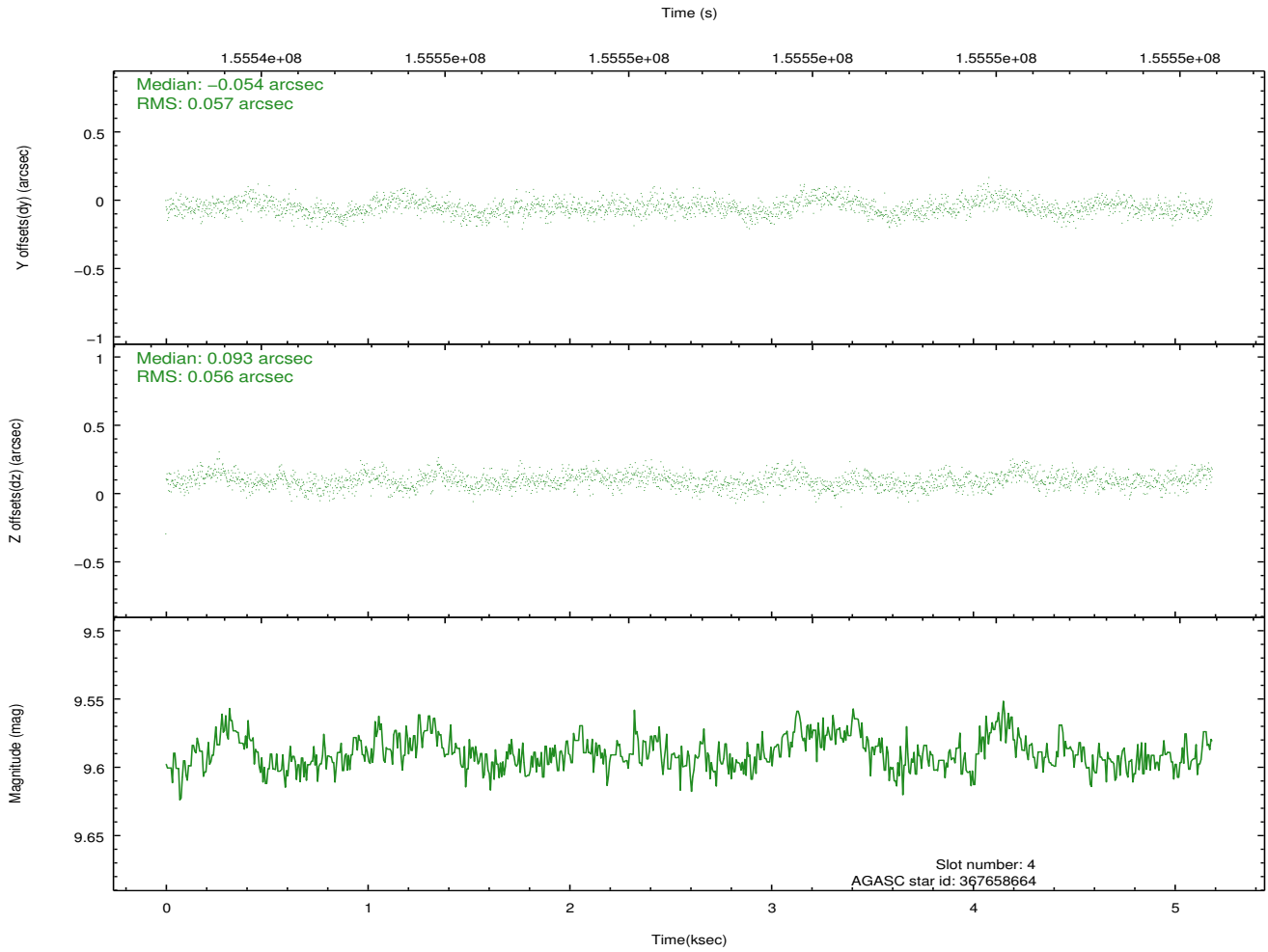
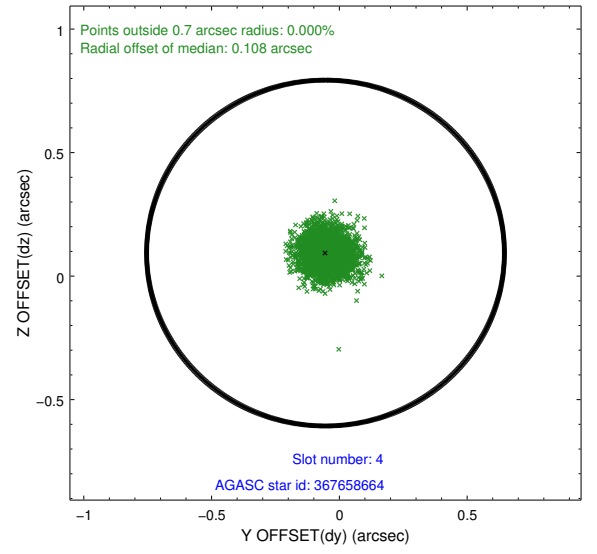
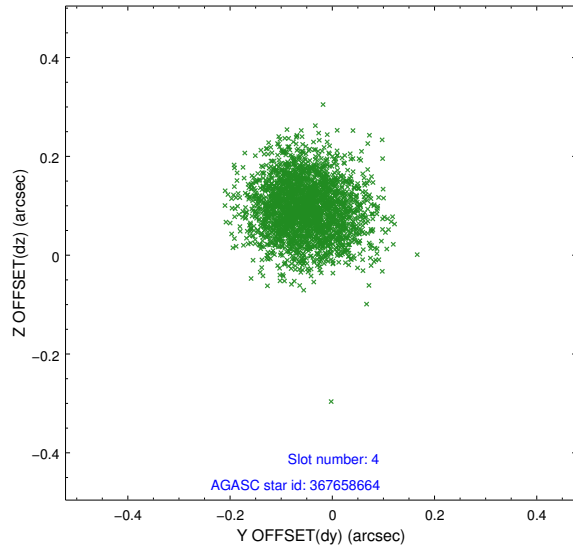
slot	status	id	mag	n_pts	med_dy	med_dz	dr1	dr2	ra	dec	mean_y	mean_z
0	FID	ACIS-I-1	7.25	1266	-0.025	0.061	0.009	0.016	0.000000	0.000000	937.13	-831.87
1	FID	ACIS-I-5	7.24	1265	-0.055	0.033	0.008	0.013	0.000000	0.000000	-1810.35	1065.01
2	FID	ACIS-I-6	7.26	1265	-0.012	-0.024	0.009	0.015	0.000000	0.000000	401.43	1710.78
3	GUIDE	367657896	9.02	2529	-0.036	-0.003	0.081	0.129	11.197765	41.313576	-1246.91	2011.37
4	GUIDE	367658664	9.59	2528	-0.054	0.093	0.084	0.137	10.374070	41.369746	-1455.06	-213.57
5	GUIDE	367674552	8.85	2530	-0.028	0.013	0.084	0.136	11.016238	41.570845	-2173.02	1520.34
6	GUIDE	365443592	8.85	2528	0.084	-0.072	0.076	0.125	9.661411	40.437300	1879.58	-2190.72
7	GUIDE	365439720	8.49	2528	0.025	-0.033	0.087	0.142	9.704623	40.431022	1905.47	-2074.07

2.4 Star Slots

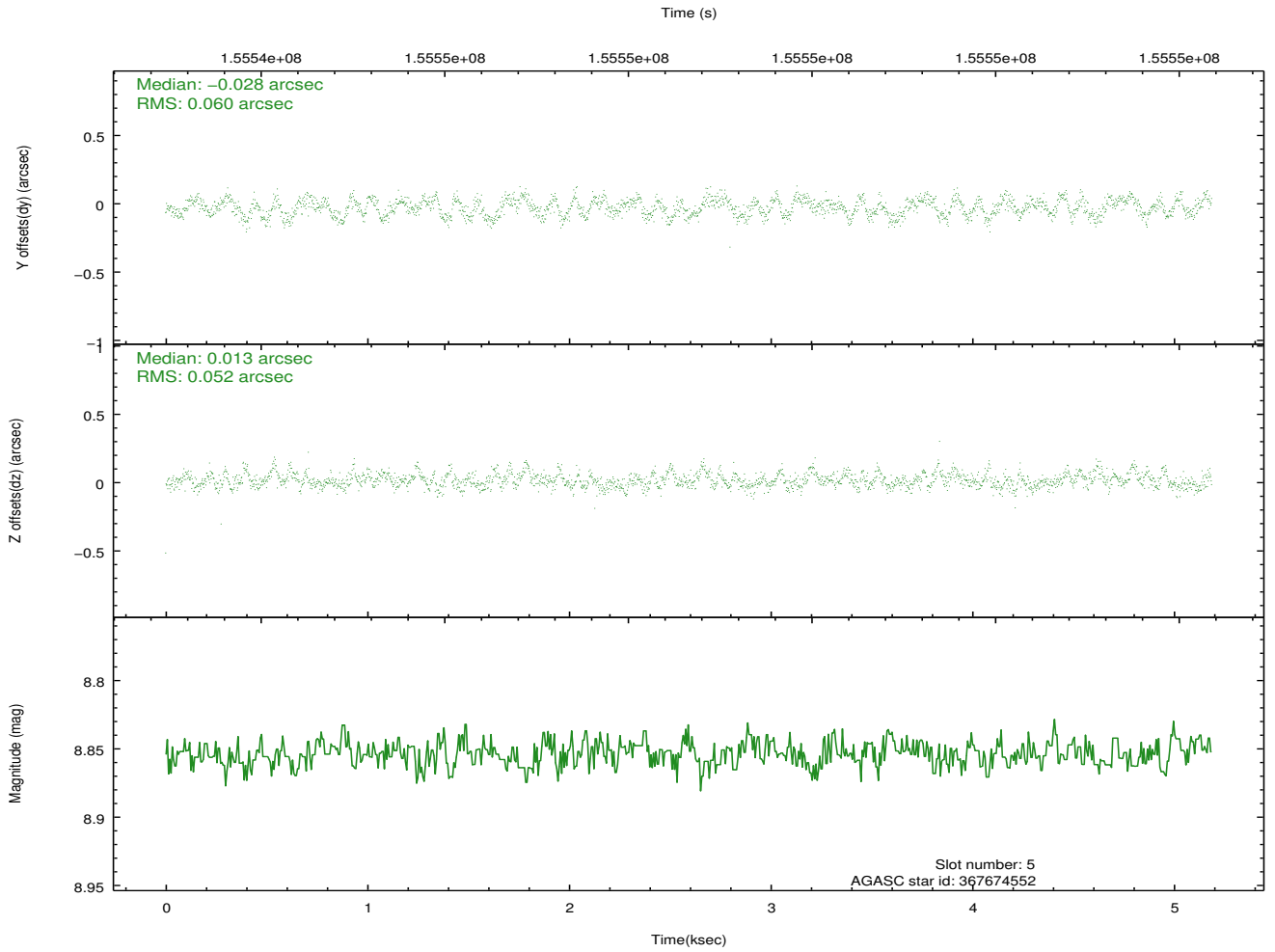
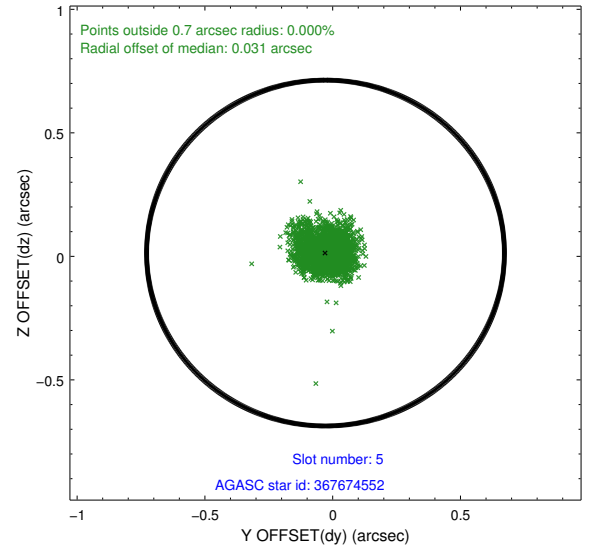
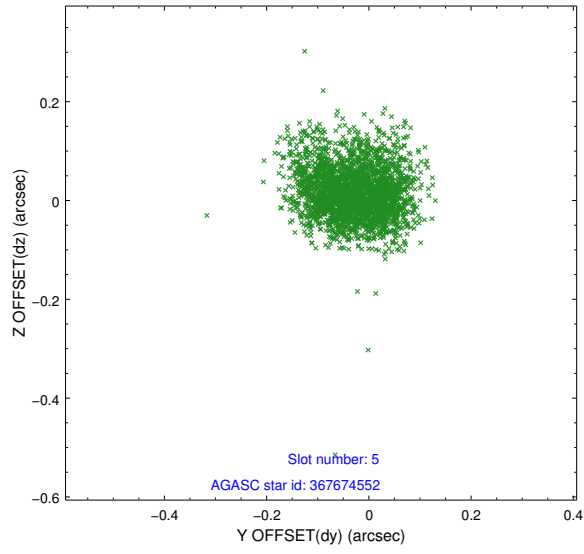
2.4.1 Slot 3



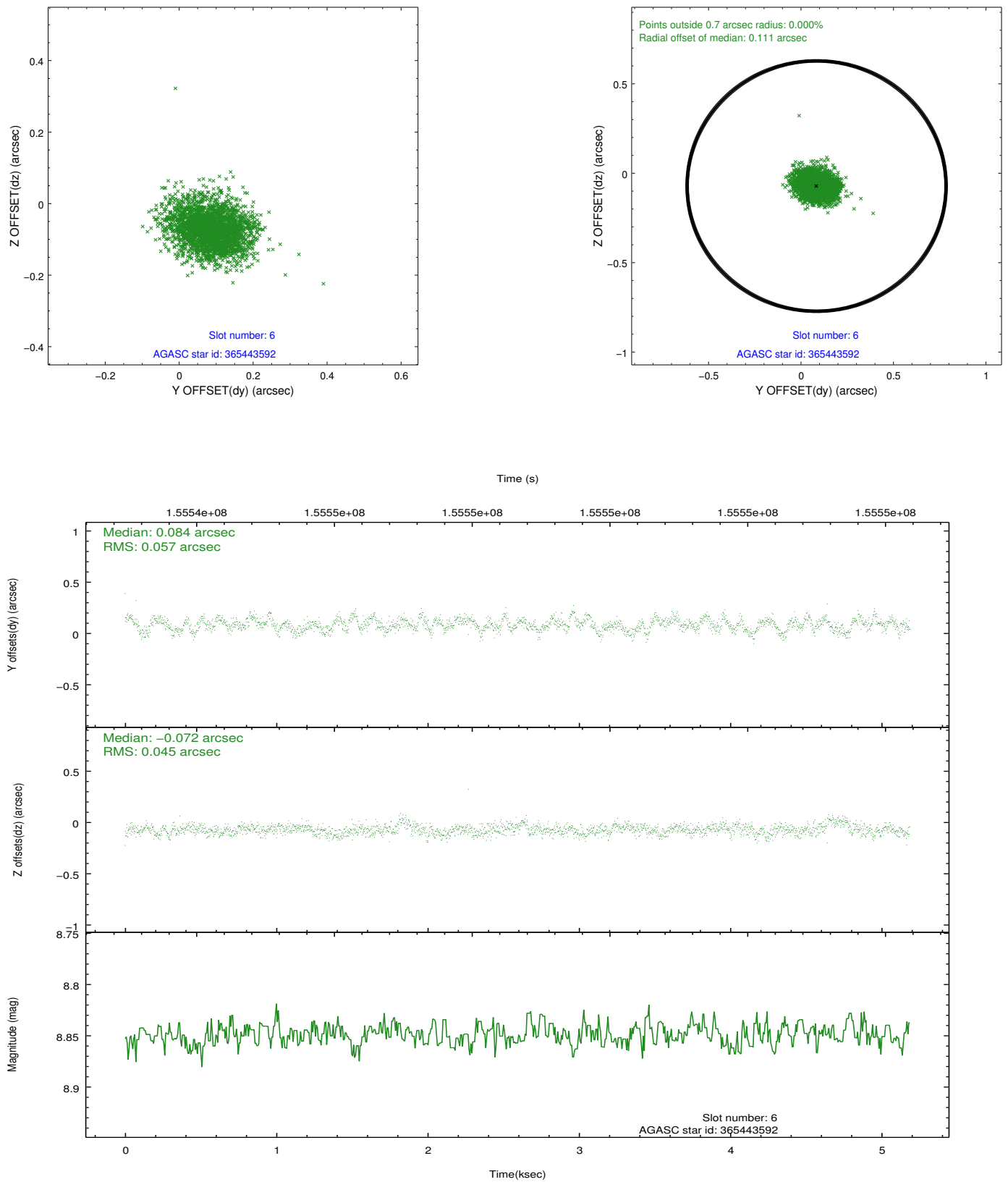
2.4.2 Slot 4



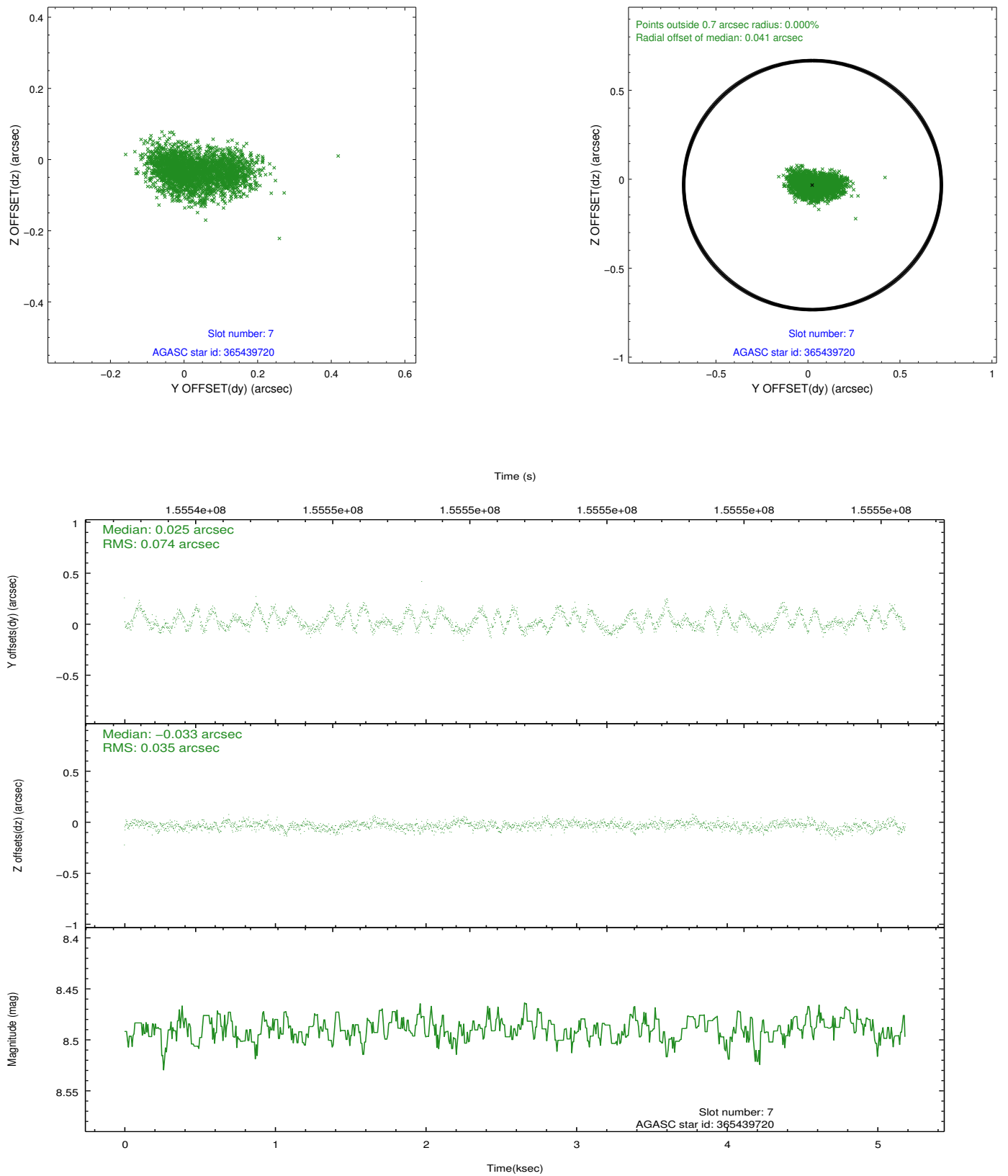
2.4.3 Slot 5



2.4.4 Slot 6

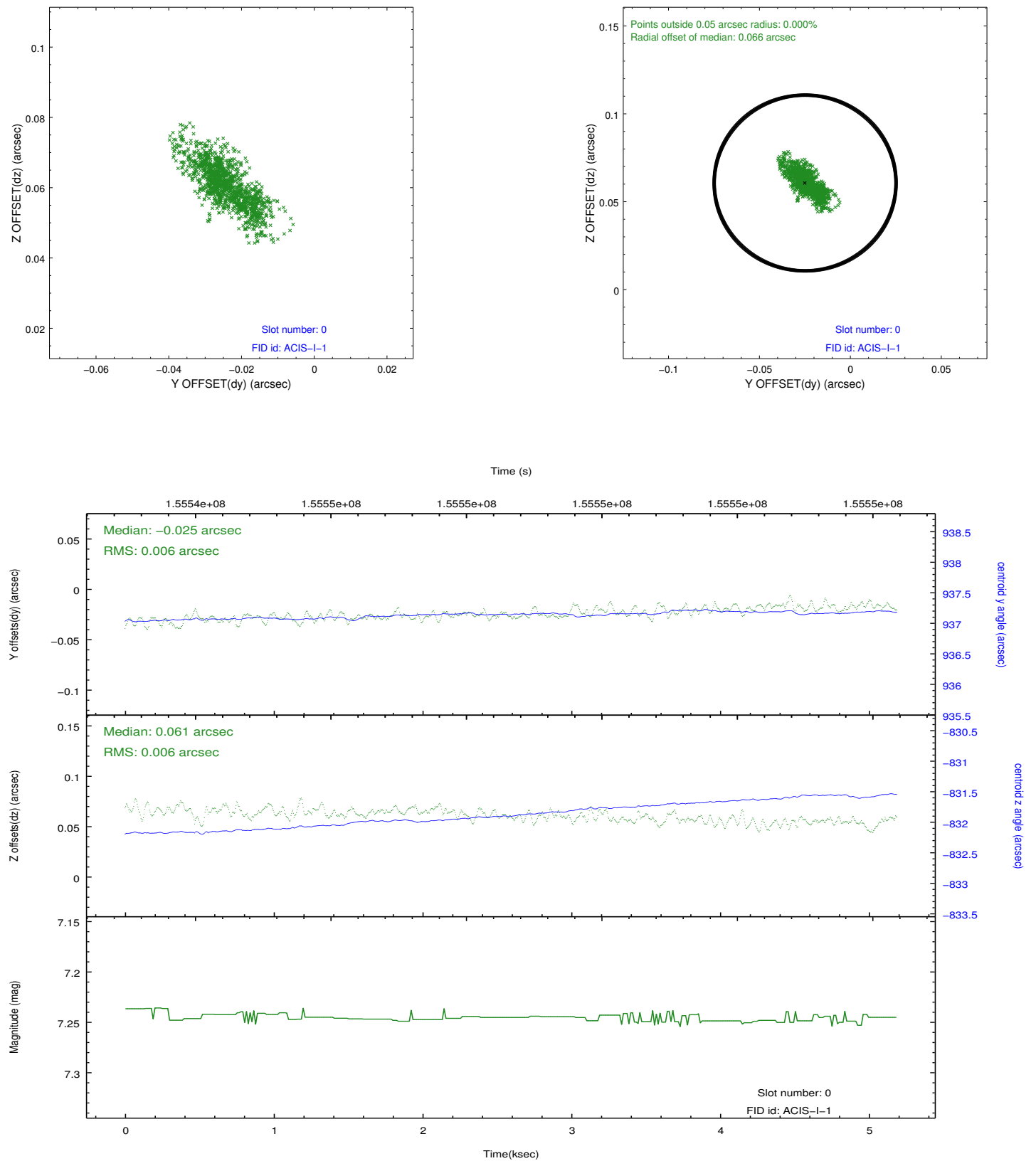


2.4.5 Slot 7

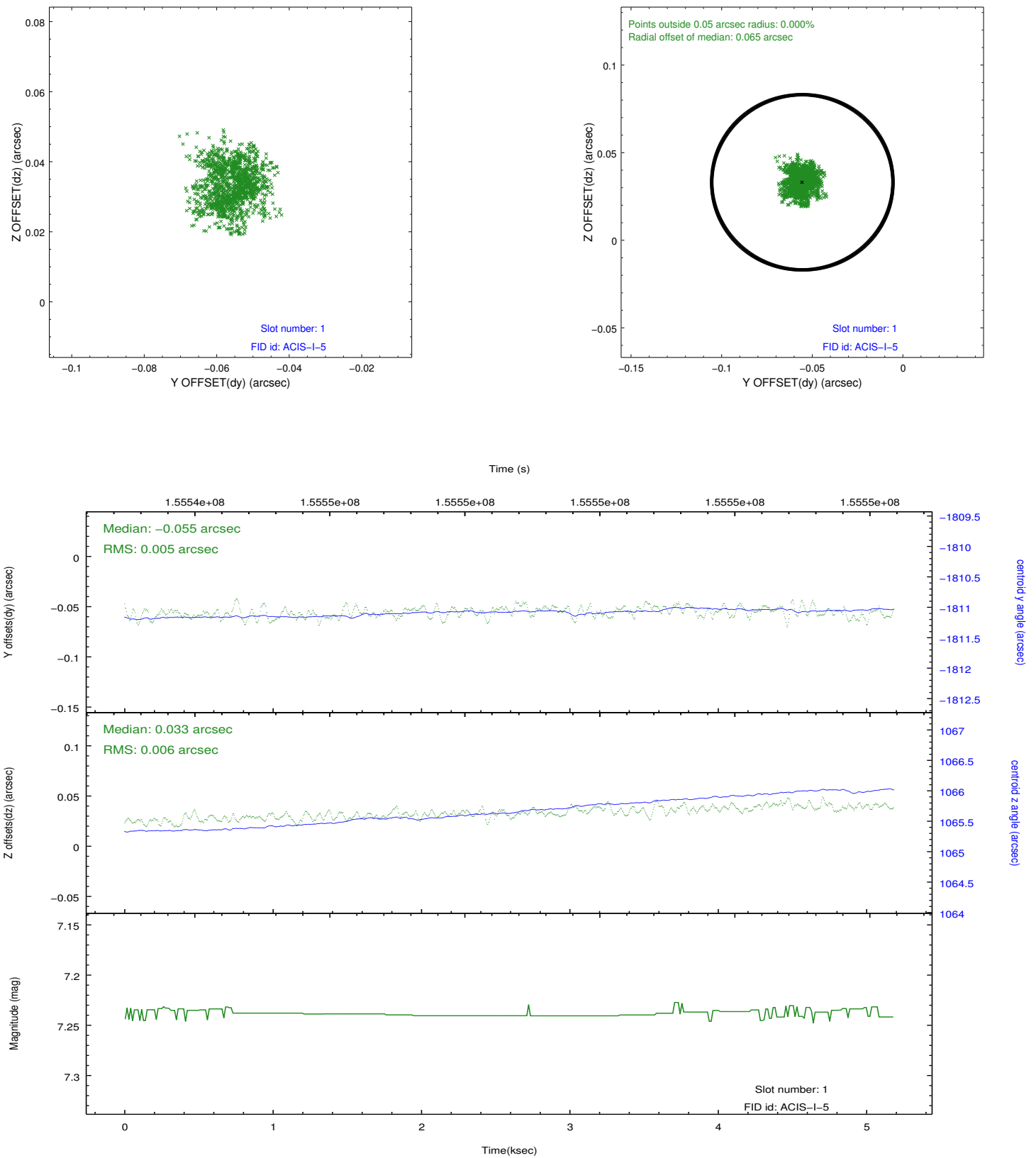


2.5 FID Slots

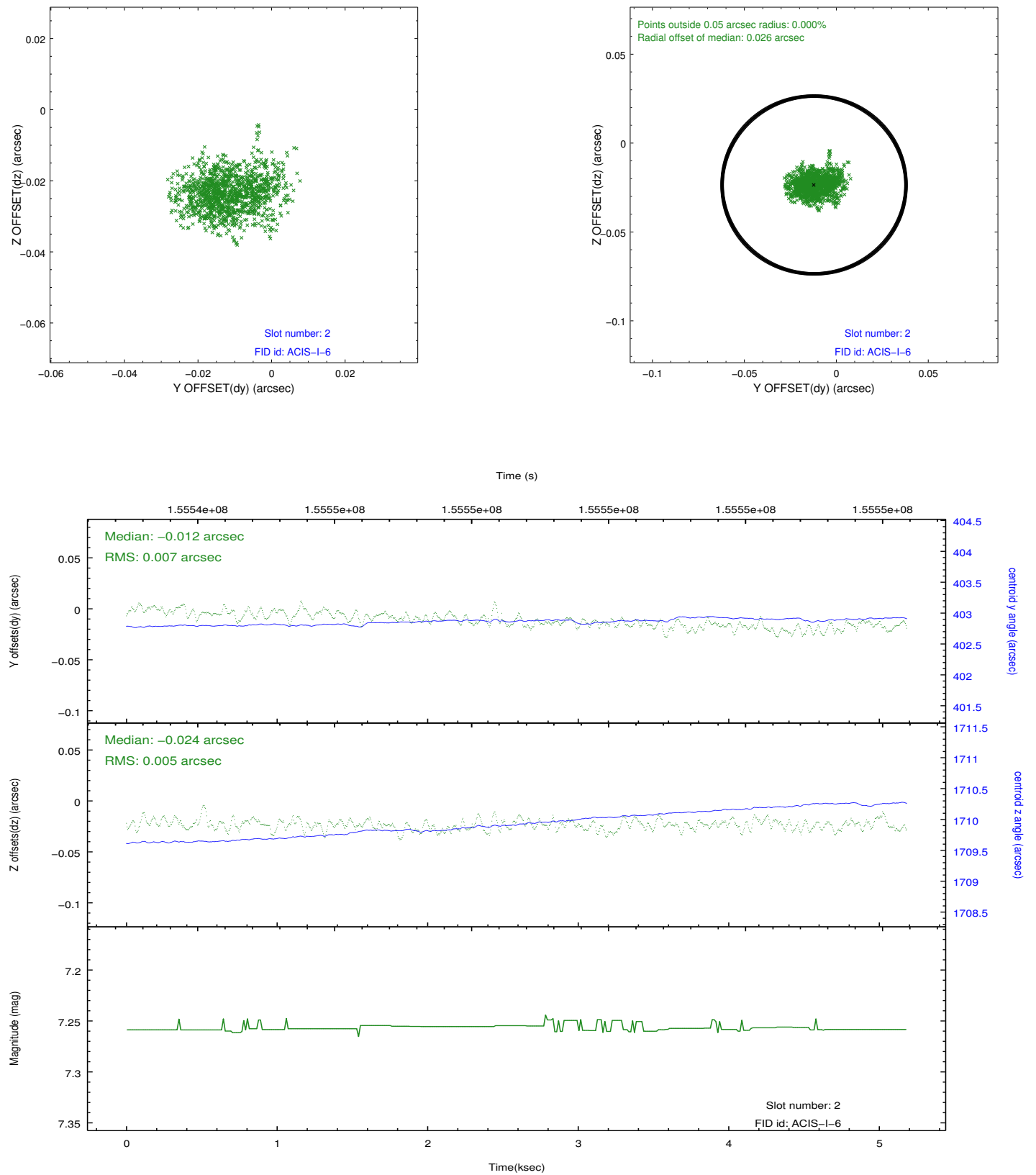
2.5.1 Slot 0



2.5.2 Slot 1



2.5.3 Slot 2



A Summary

A.1 Status

V&V Scientist	Jen Lauer
V&V Date (YYYY-MM-DD)	2012.10.30
V&V Edition	1
V&V Disposition and Status	OK
V&V Charge Time	4.758

A.2 Comments

Window constraint met.