

V&V Reference Report

L2 ASCDS Version : 8.4.5

Observation 2562 - L2 Version 5
Chandra X-Ray Center

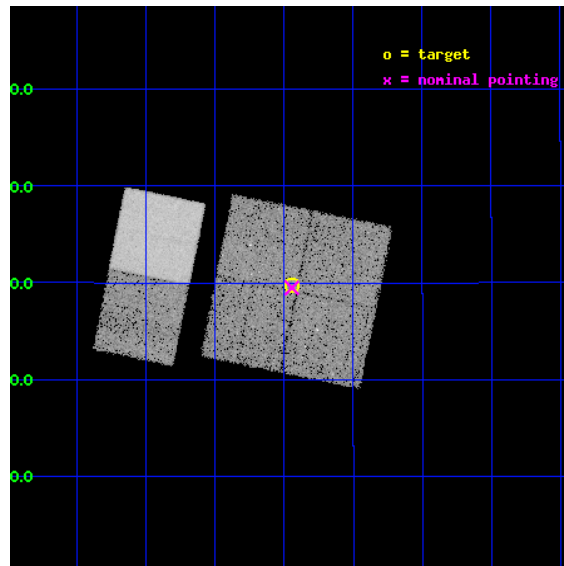
L2 Processing Date : Oct 20 2012

Contents

1	Front	2
2	OBI	3
2.1	OBI	3
2.1.1	Images	3
2.1.2	Bias	3
2.1.3	Parameters	4
2.1.4	Events	4
2.2	Compared Parameters	5
2.3	Aspect	6
2.4	Star Slots	9
2.4.1	Slot 3	9
2.4.2	Slot 4	10
2.4.3	Slot 5	11
2.5	FID Slots	12
2.5.1	Slot 0	12
2.5.2	Slot 1	13
2.5.3	Slot 2	14
A	Summary	15
A.1	Status	15
A.2	Comments	15

1 Front

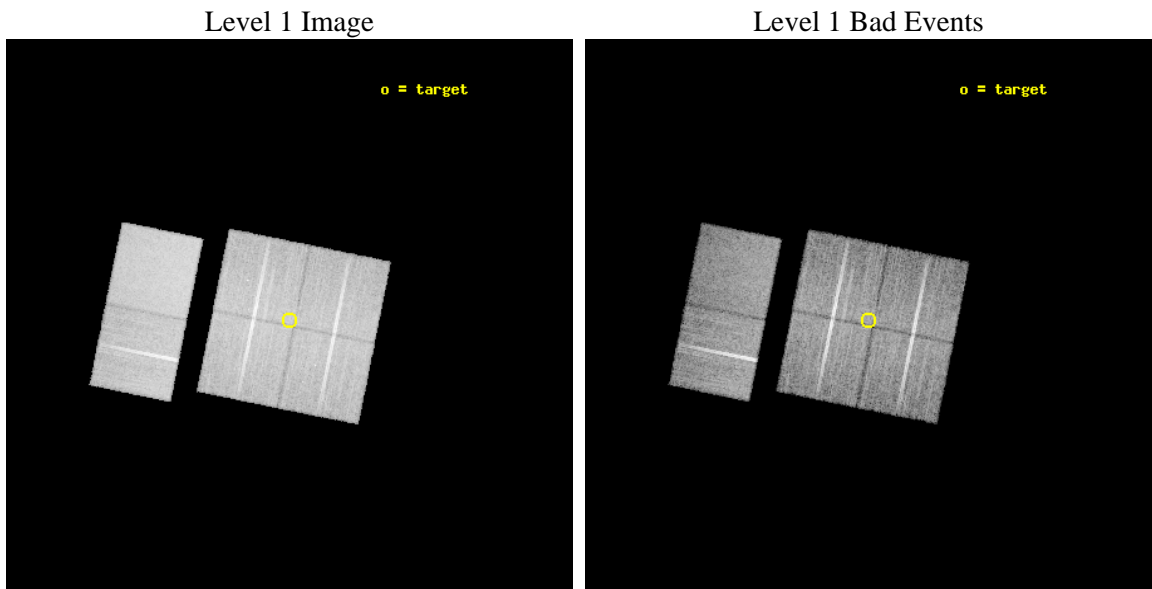
seq_num	200170	Sequence number
obs_id	2562	Observation id
title	X-RAY EVOLUTION OF ACCRETING PROTOSTARS	Proposal title
observer	DR. PHILIPPE ANDRE	Principal investigator
object	IRAM04191	Source name
dtcycle	0	
cycle	P	events from which exps? Prim/Second/Both
ra_targ	65.487083	Observer's specified target RA [deg]
dec_targ	15.496111	Observer's specified target Dec [deg]
ra_nom	65.486099764369	Nominal RA [deg]
dec_nom	15.49148040849	Nominal Dec [deg]
roll_nom	281.43935399381	Nominal Roll [deg]
revision	5	Processing version of data
ontime	19158.400017828	Sum of GTIs [s]
livetime	18915.804820998	Livetime [s]
ontime0	19158.400017828	Sum of GTIs [s]
ontime1	19158.400017828	Sum of GTIs [s]
ontime2	19158.400017828	Sum of GTIs [s]
ontime3	19158.400017828	Sum of GTIs [s]
ontime6	19158.400017828	Sum of GTIs [s]
ontime7	19158.400017828	Sum of GTIs [s]
l2events	128946	Number of level 2 events



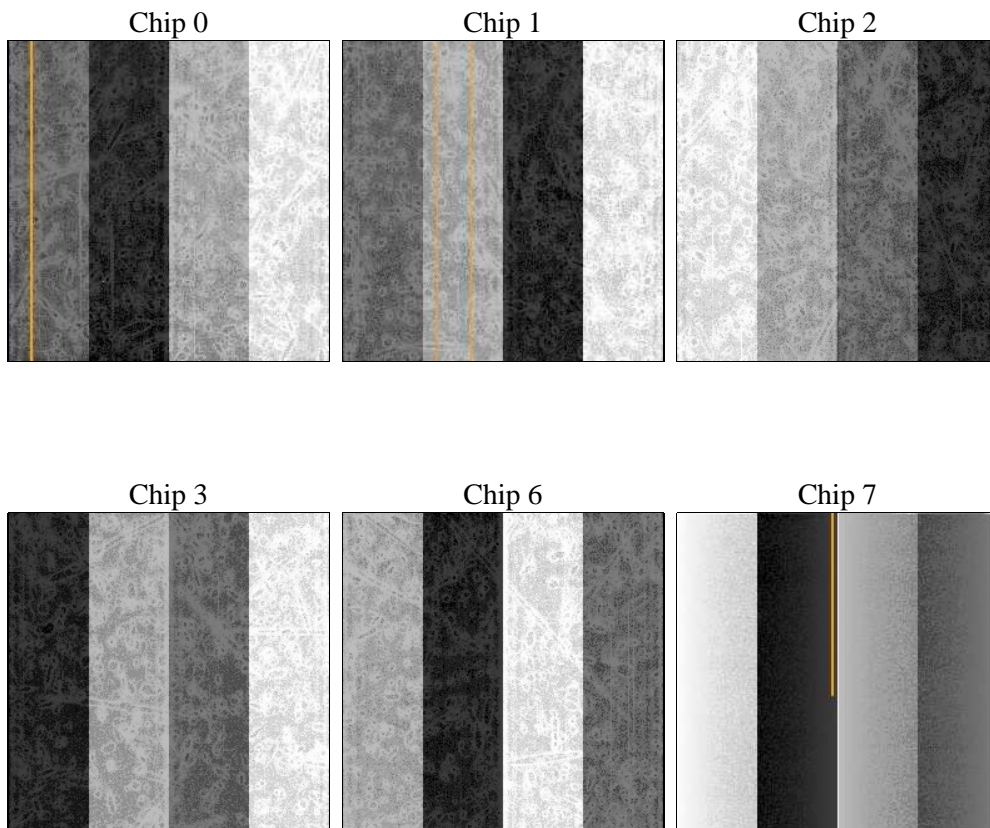
2 OBI

2.1 OBI

2.1.1 Images



2.1.2 Bias



2.1.3 Parameters

obi_num	0	Obi number	sched_exp_time	19400.000000	[s] Scheduled observation exposure time
ascdsver	8.4.5	Processing system revision	ontime	19158.400017828	Sum of GTIs [s]
caldsver	4.5.2	 	ontime0	19158.400017828	Sum of GTIs [s]
date	2012-10-20T04:47:04	Date and time of file creation	ontime1	19158.400017828	Sum of GTIs [s]
revision	5	Processing version of data	ontime2	19158.400017828	Sum of GTIs [s]
			ontime3	19158.400017828	Sum of GTIs [s]
			ontime6	19158.400017828	Sum of GTIs [s]
			ontime7	19158.400017828	Sum of GTIs [s]
			l1events	784464	Number of level 1 events

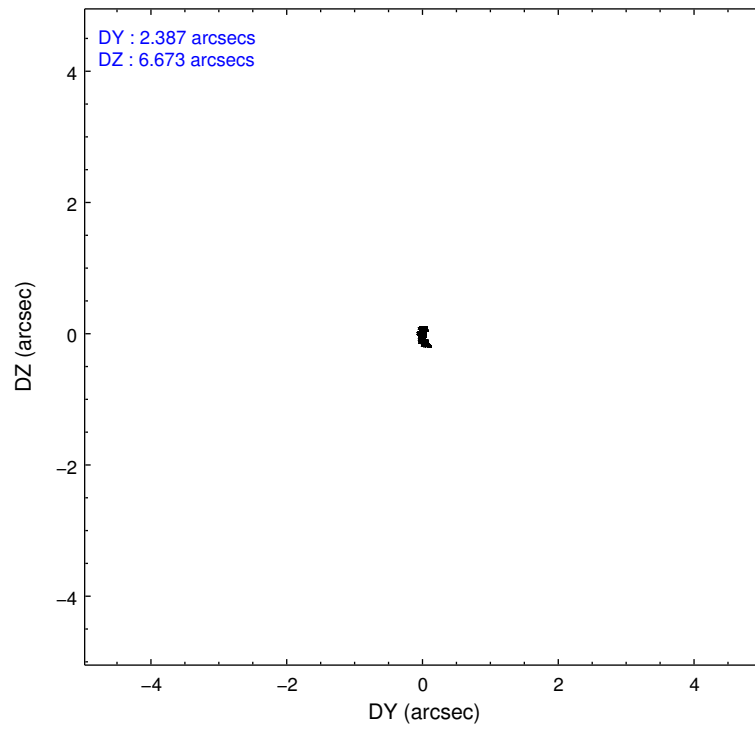
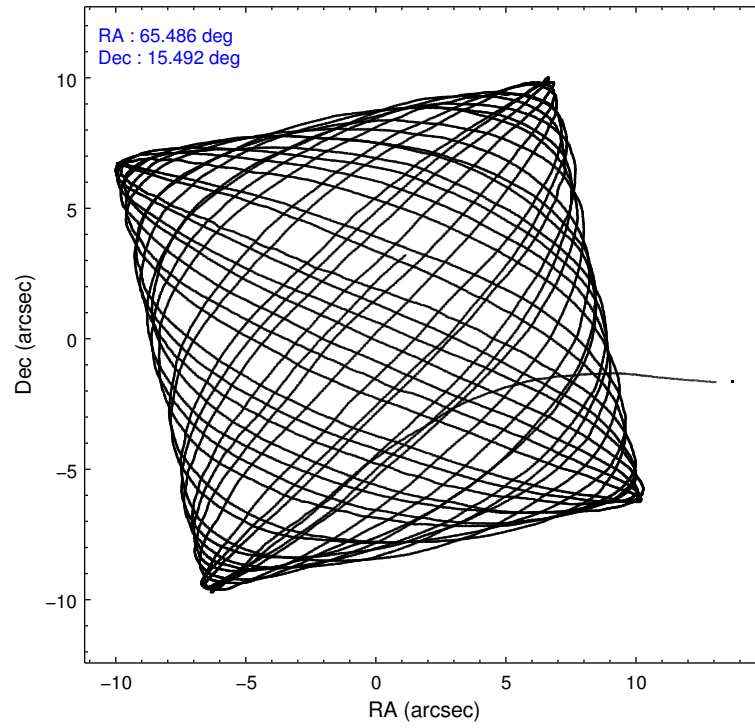
2.1.4 Events

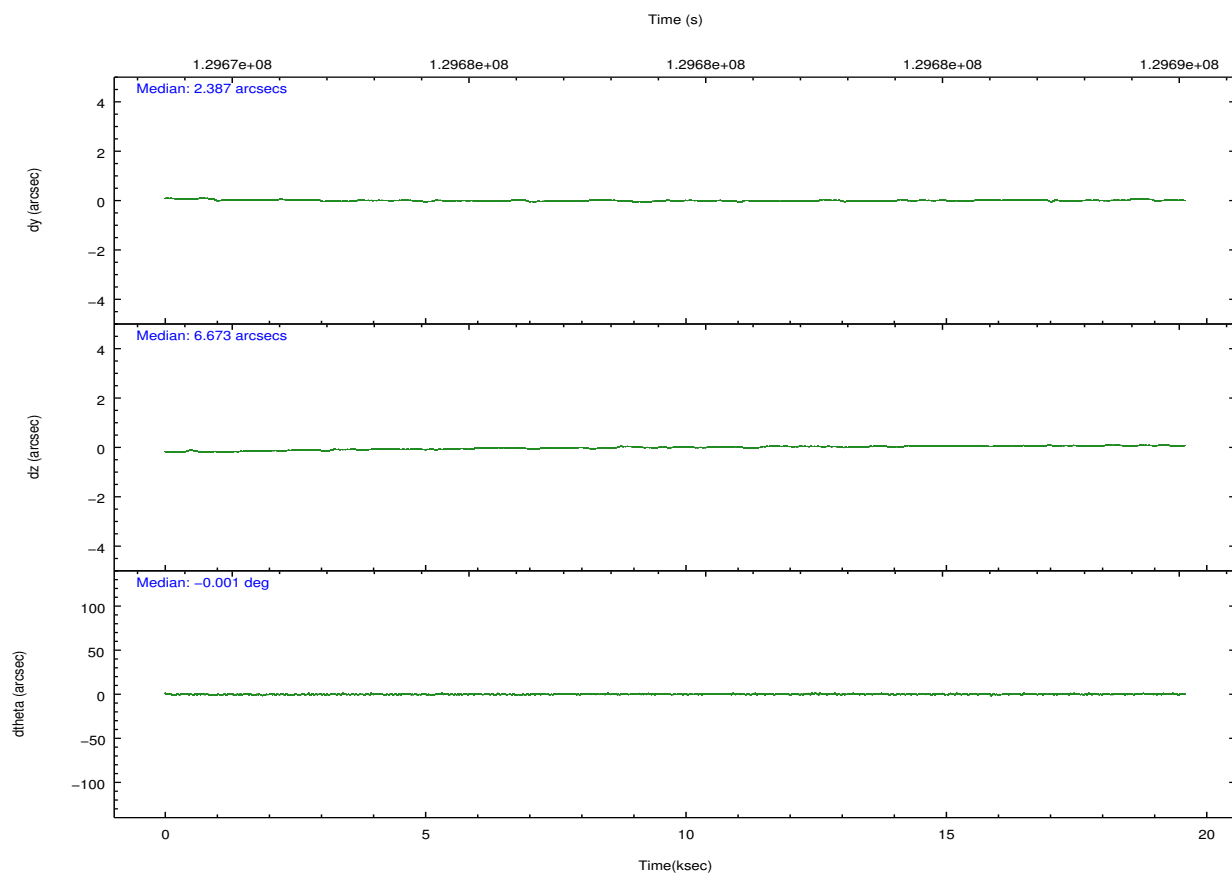
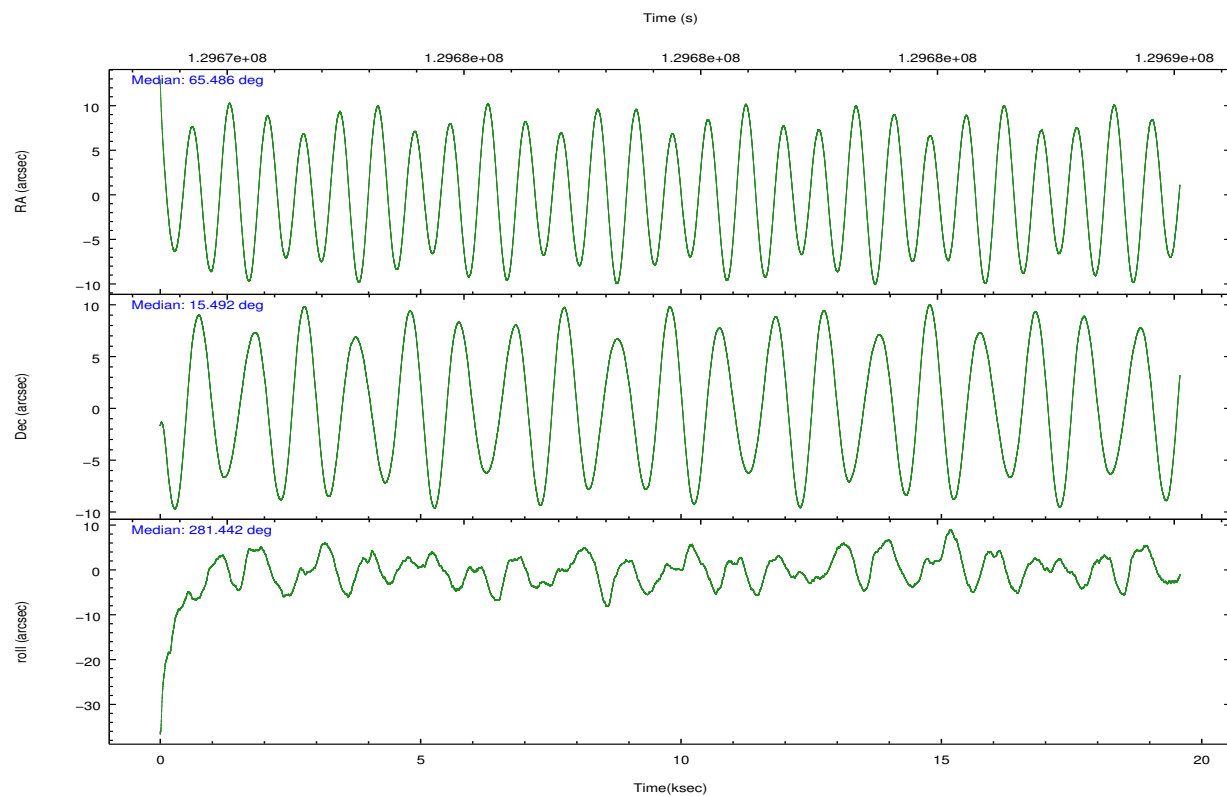
	ccd 0	ccd 1	ccd 2	ccd 3	ccd 6	ccd 7		ccd 0	ccd 1	ccd 2	ccd 3	ccd 6	ccd 7
level 1 events	116881	115357	125794	127403	133337	165692	grade 0 events	6324	5854	5790	6240	5705	5957
rejected events	101894	100561	111802	112890	118717	97367		5%	5%	4%	4%	4%	3%
rejected %	87%	87%	88%	88%	89%	58%	grade 1 events	59	70	48	72	55	155
								0%	0%	0%	0%	0%	0%
							grade 2 events	3265	3052	3131	2913	3032	13280
								2%	2%	2%	2%	2%	8%
							grade 3 events	1445	1580	1337	1388	1446	6217
								1%	1%	1%	1%	1%	3%
							grade 4 events	1429	1524	1305	1334	1456	6115
								1%	1%	1%	1%	1%	3%
							grade 5 events	4677	4967	4388	5155	5603	15701
								4%	4%	3%	4%	4%	9%
							grade 6 events	2524	2787	2431	2642	2984	36768
								2%	2%	1%	2%	2%	22%
							grade 7 events	97158	95523	107364	107659	113056	81499
								83%	82%	85%	84%	84%	49%

2.2 Compared Parameters

Parameter	Planned	Actual	Parameter	Planned	Actual
Instrument	ACIS	ACIS	Obspar format version number	7	7
Detector	ACIS-012367	ACIS-012367	Obspar file type	PREDICTED	ACTUAL
Grating	NONE	NONE	Obspar update status	NONE	UPDATED
Data mode	FAINT	FAINT	Number of optional ACIS chips dropped	0	0
Observation mode	POINTING	POINTING	On-chip summing requested	N	N
[deg] Pointing RA	65.467225	65.48609976436855	Subarray requested	NONE	NONE
[deg] Pointing Dec	15.512018	15.4914804084901	Alternating exposures requested	N	N
[deg] Pointing Roll	281.235715	281.4393539938126	[s] Primary exposure time	0.000000	3.2
[mm] SIM focus pos	-0.782348	-0.7809083437167272			
[mm] SIM defocus	0	0.001439871863259334			
[mm] SIM translation stage pos	-233.592463	-233.5874344608287			
[mm] SIM translation stage offset	0	-0.005018542100998502			
[s] Observation start time (MET)	129669741.184000	129668924.22527			
Observation start date	2002-02-09T19:21:17	2002-02-09T19:08:44			
[s] Observation end time (MET)	129689141.184000	129689532.87611			
Observation end date	2002-02-10T00:44:37	2002-02-10T00:52:12			
Read mode	TIMED	TIMED			

2.3 Aspect



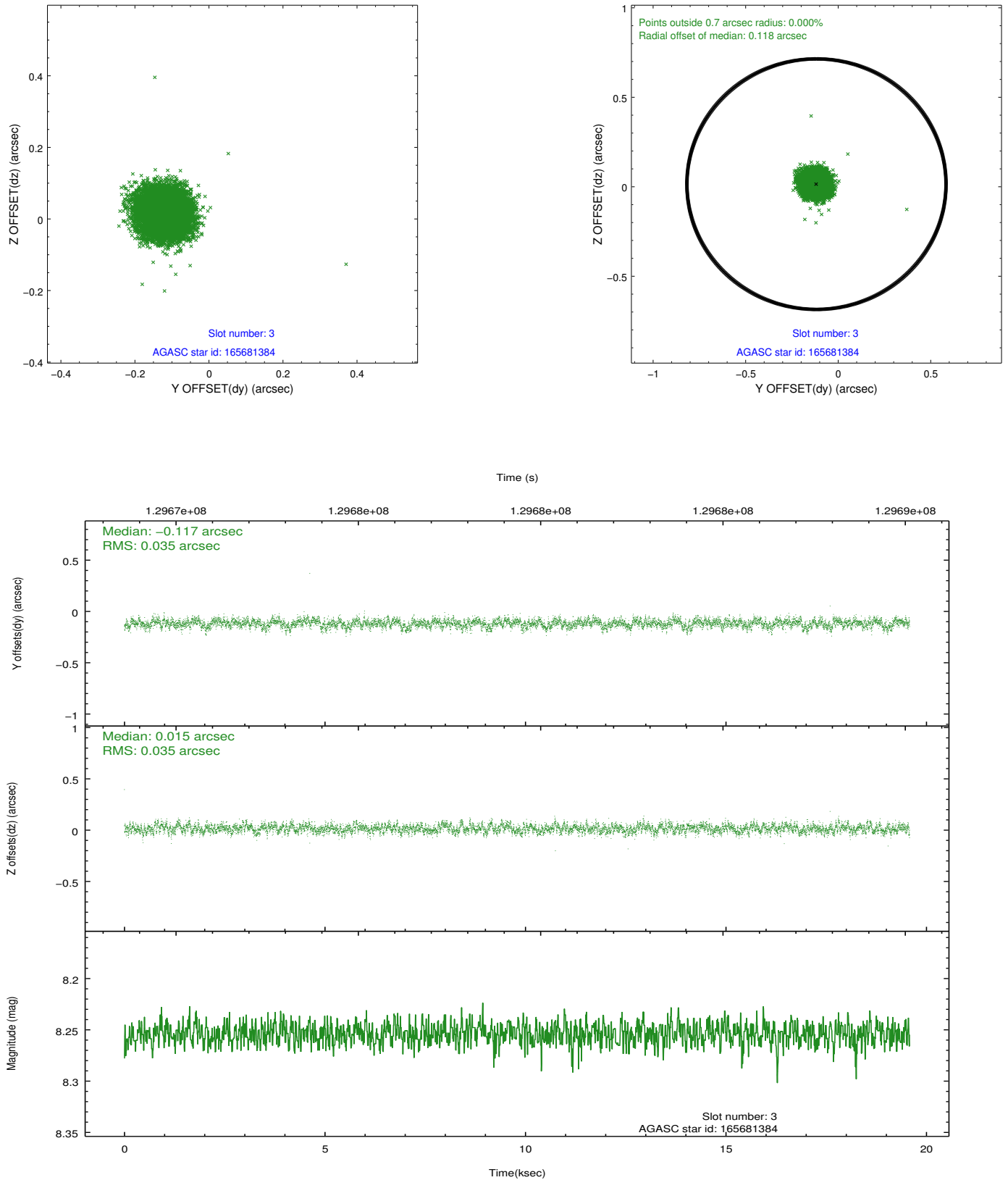


Slot Statistics

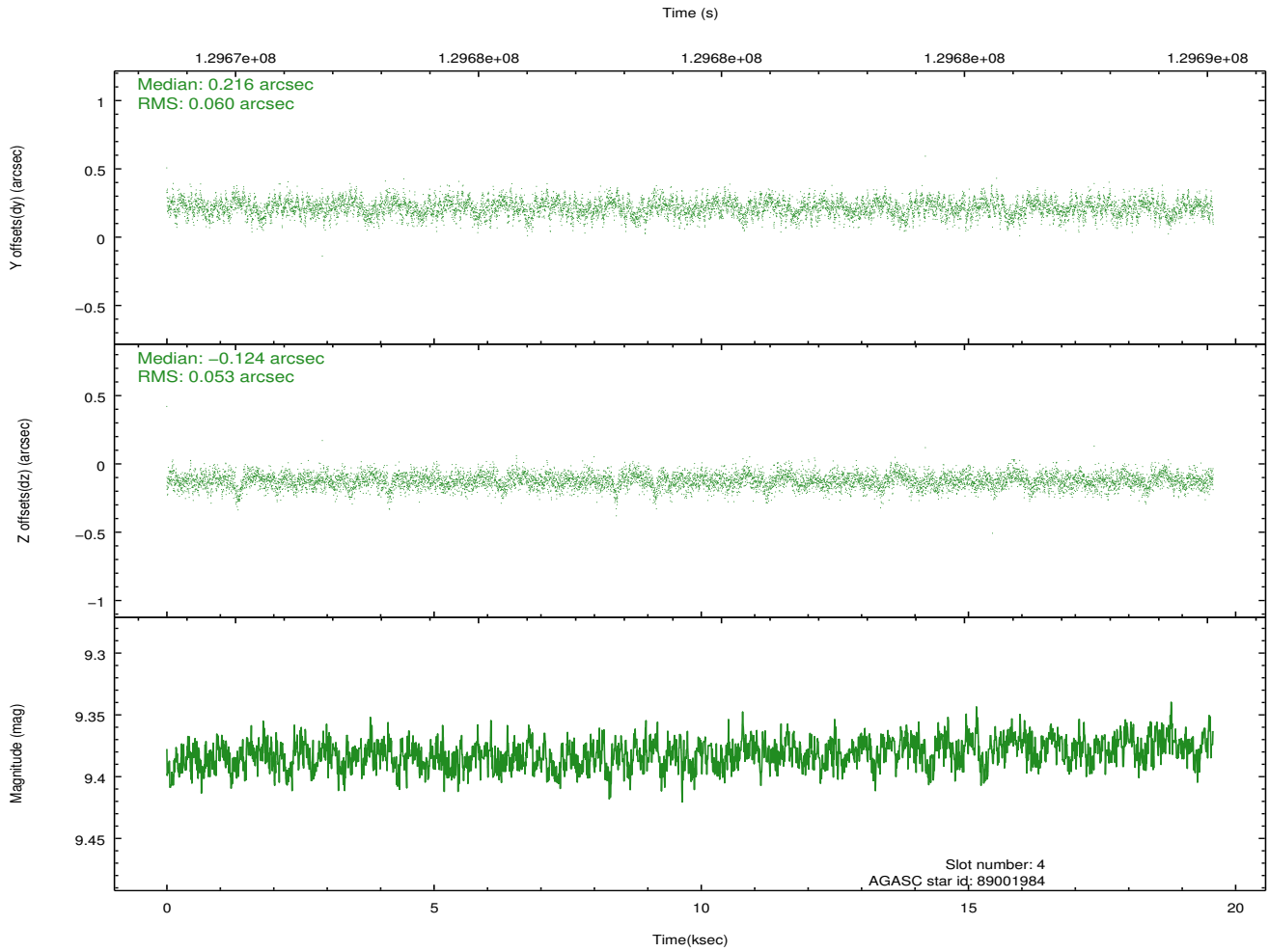
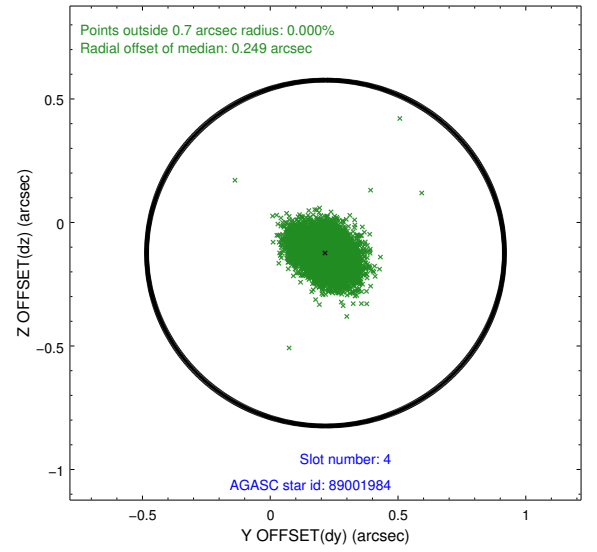
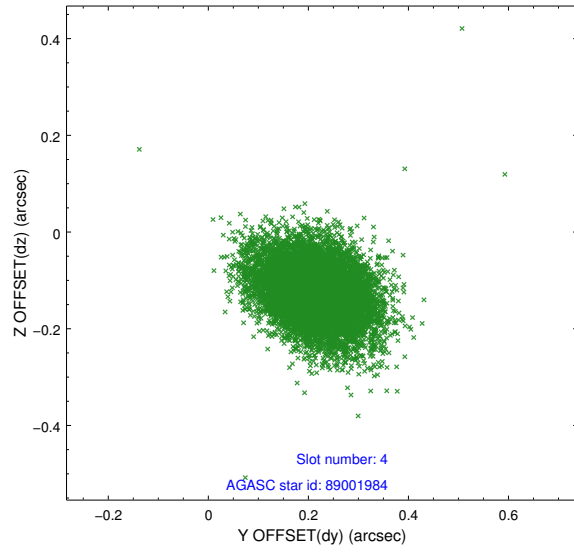
slot	status	id	mag	n_pts	med_dy	med_dz	dr1	dr2	ra	dec	mean_y	mean_z
0	FID	ACIS-I-1	7.25	4777	-0.007	0.013	0.006	0.011	0.000000	0.000000	937.40	-830.05
1	FID	ACIS-I-5	7.24	4776	-0.039	0.046	0.006	0.011	0.000000	0.000000	-1810.60	1067.44
2	FID	ACIS-I-6	7.26	4777	-0.046	0.011	0.007	0.011	0.000000	0.000000	402.74	1712.08
3	GUIDE	165681384	8.25	9553	-0.117	0.015	0.052	0.084	65.495218	15.784935	-944.42	286.09
4	GUIDE	89001984	9.38	9548	0.216	-0.124	0.084	0.140	64.983099	14.874113	1923.07	-2100.07
5	GUIDE	165677840	9.43	9551	-0.097	0.111	0.075	0.124	65.228357	15.933860	-1650.51	-515.64
6	OMITTED		0.00	0	0.000	0.000	0.000	0.000	0.000000	0.000000	0.00	0.00
7	OMITTED		0.00	0	0.000	0.000	0.000	0.000	0.000000	0.000000	0.00	0.00

2.4 Star Slots

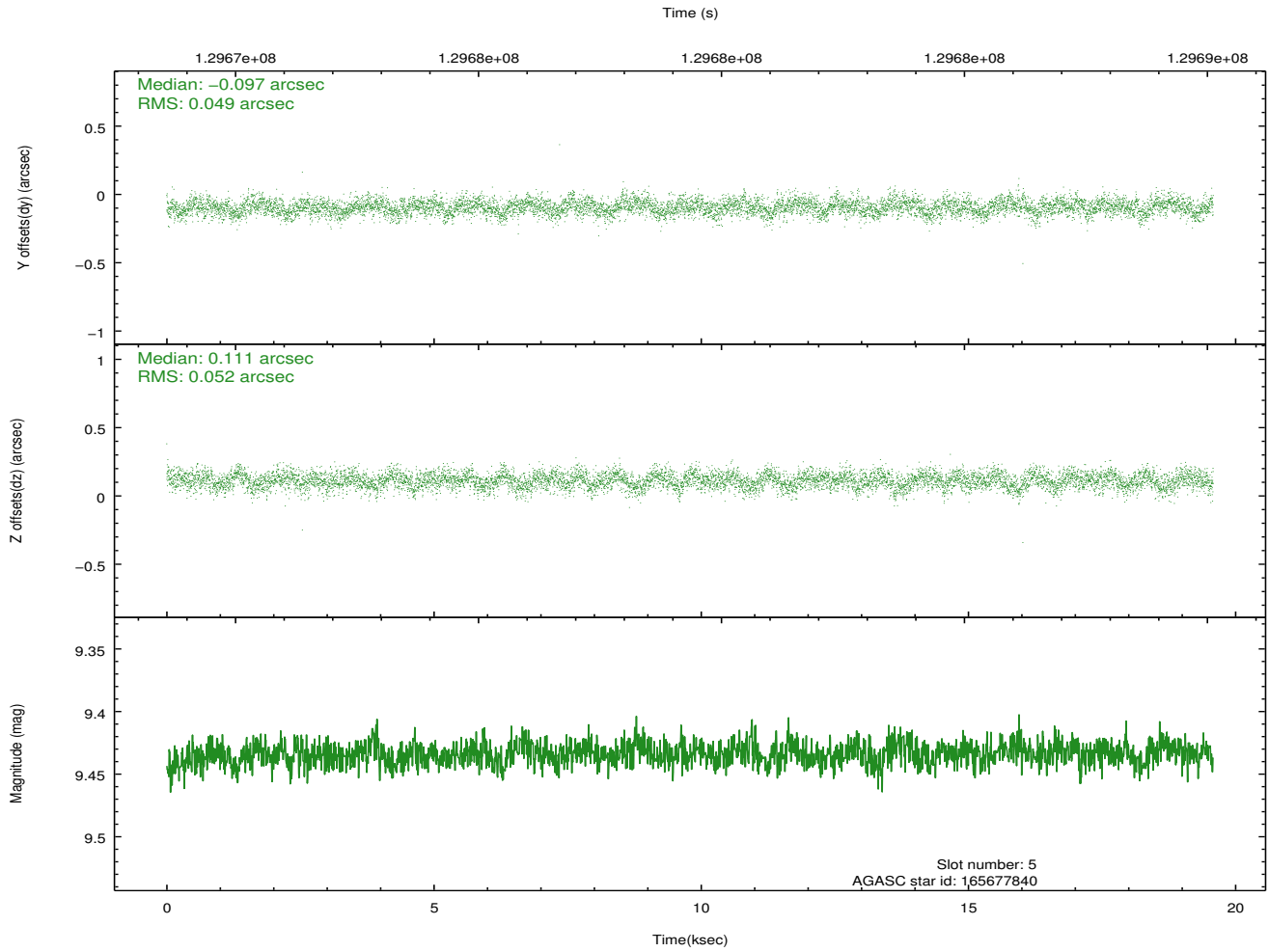
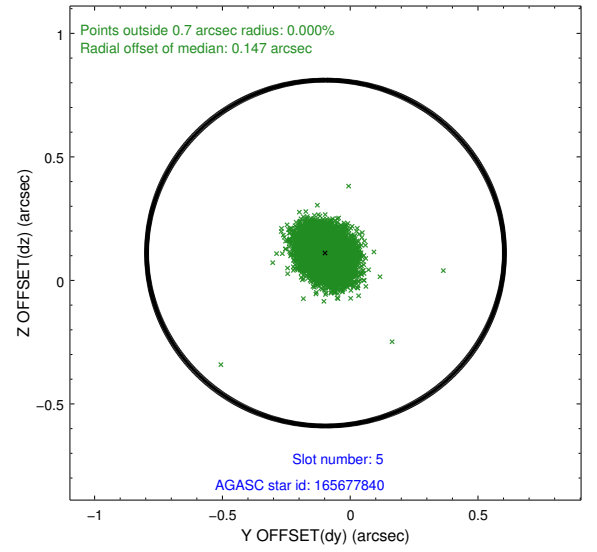
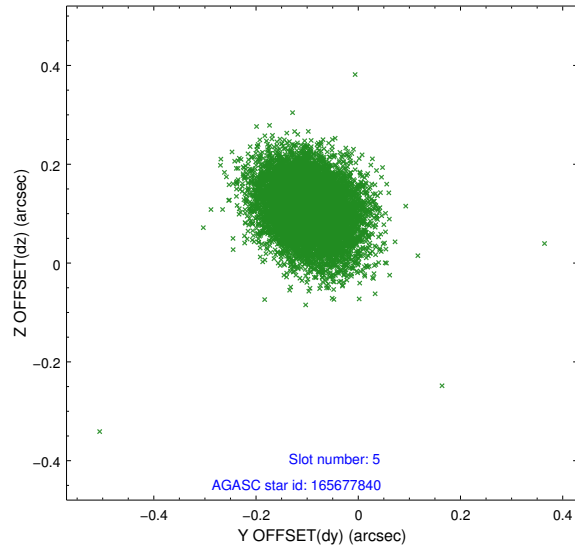
2.4.1 Slot 3



2.4.2 Slot 4

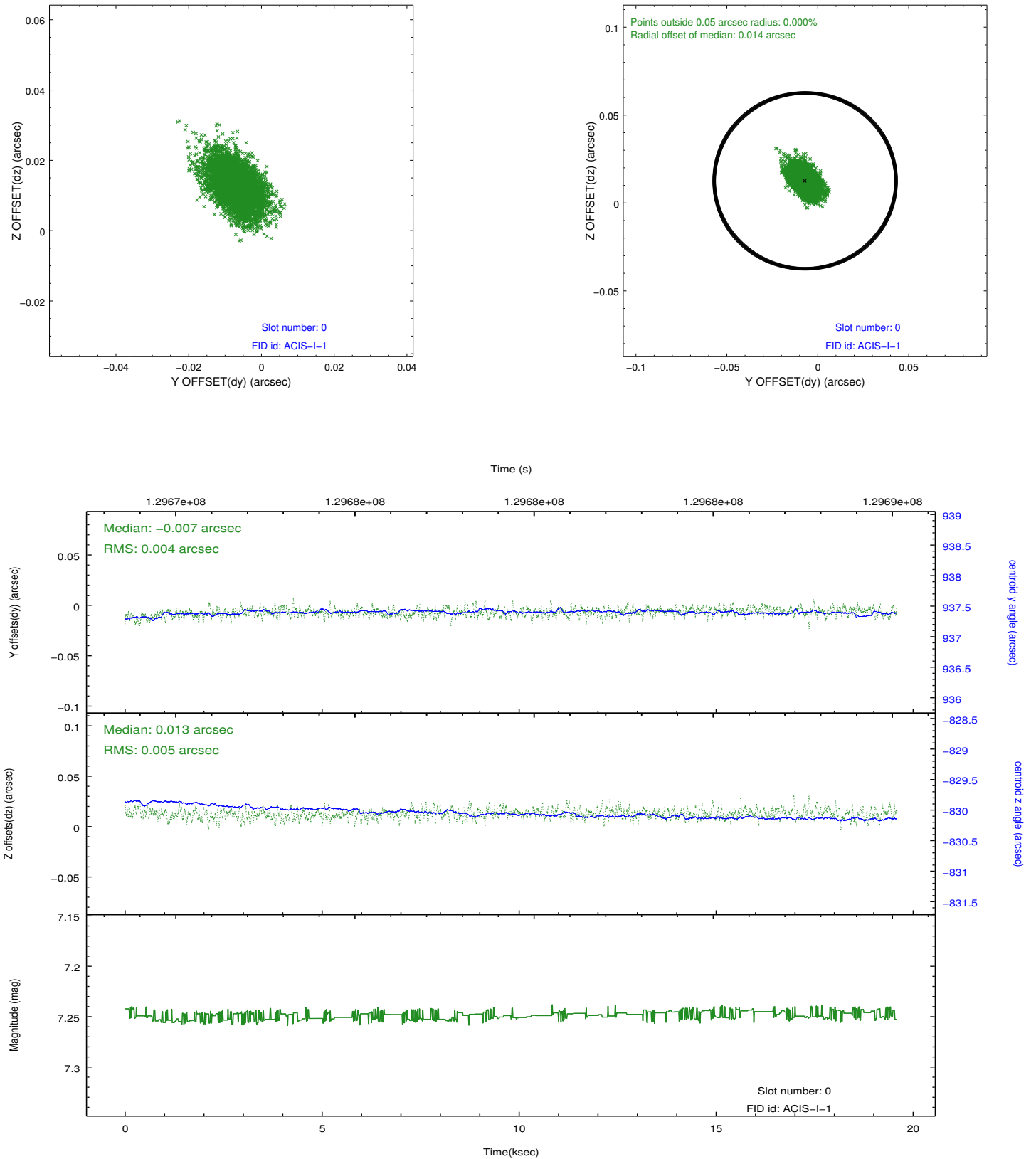


2.4.3 Slot 5

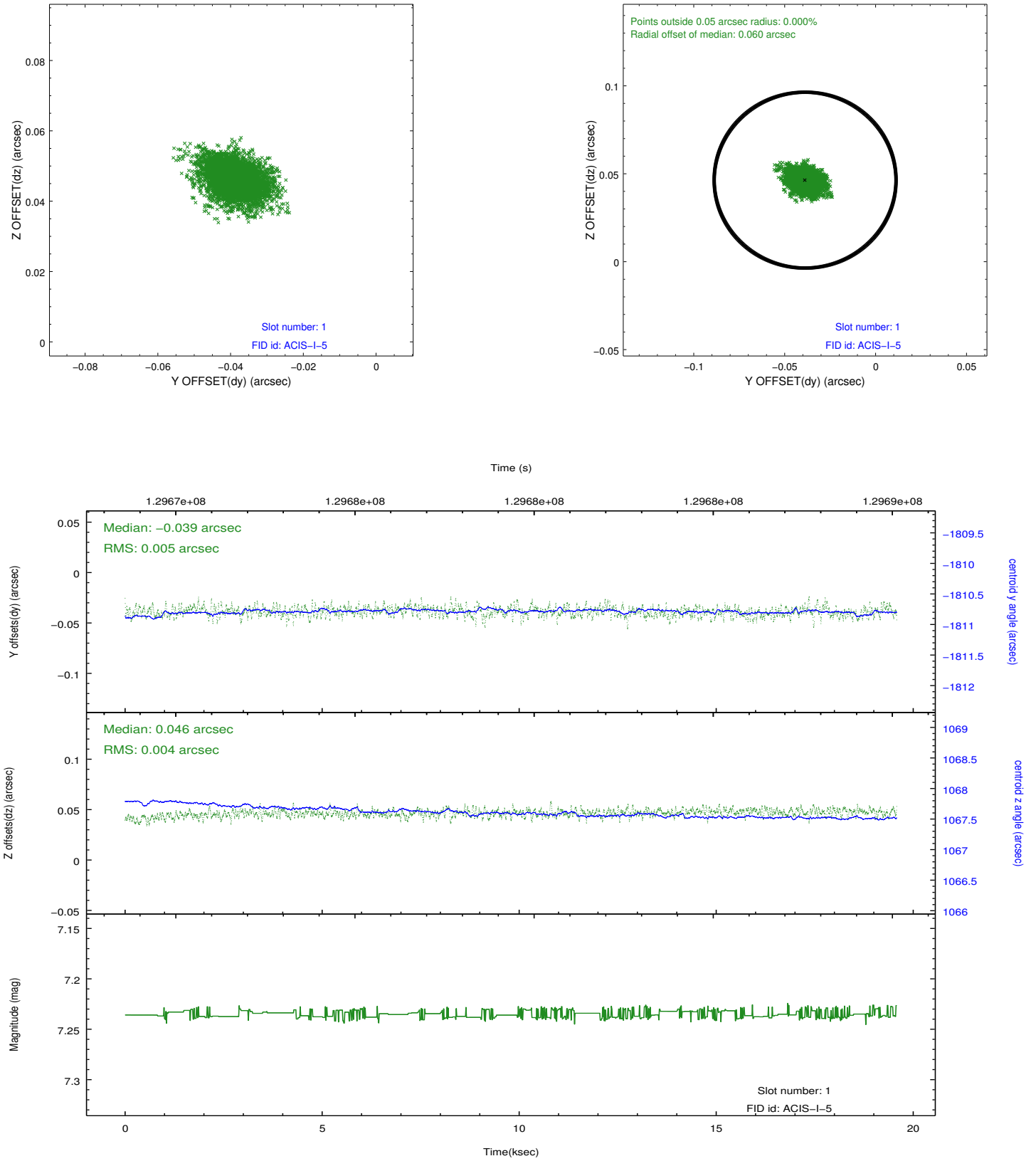


2.5 FID Slots

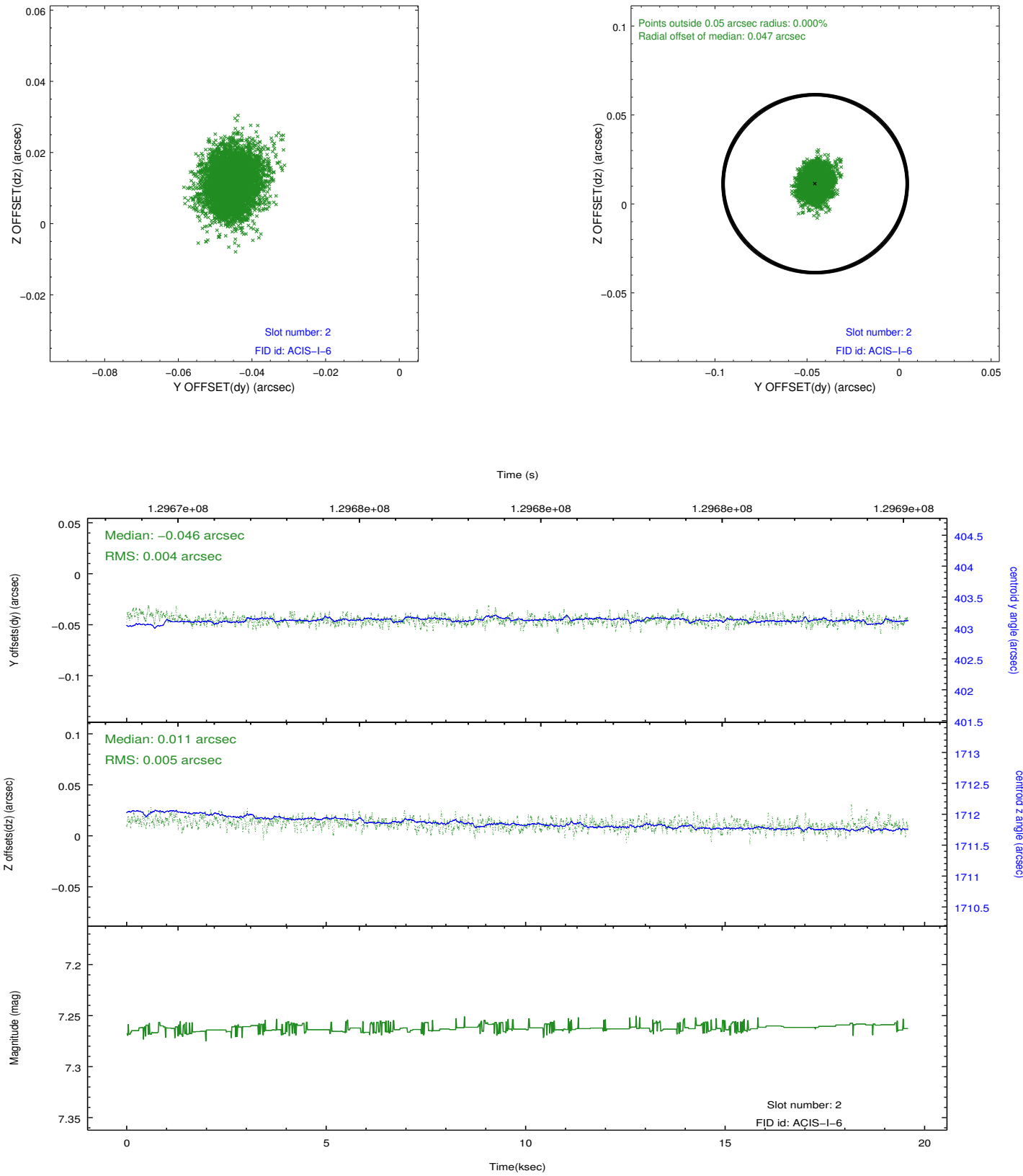
2.5.1 Slot 0



2.5.2 Slot 1



2.5.3 Slot 2



A Summary

A.1 Status

V&V Scientist	Jen Lauer
V&V Date (YYYY-MM-DD)	2012.10.31
V&V Edition	1
V&V Disposition and Status	OK
V&V Charge Time	19.161

A.2 Comments

The guide stars in slots 6 and 7 were removed from the aspect solution due to poor data quality. The aspect solution is improved by the removal of these guide stars from the solution.