

V&V Reference Report

L2 ASCDS Version : 7.6.9

Observation 2512 - L2 Version 001
Chandra X-Ray Center

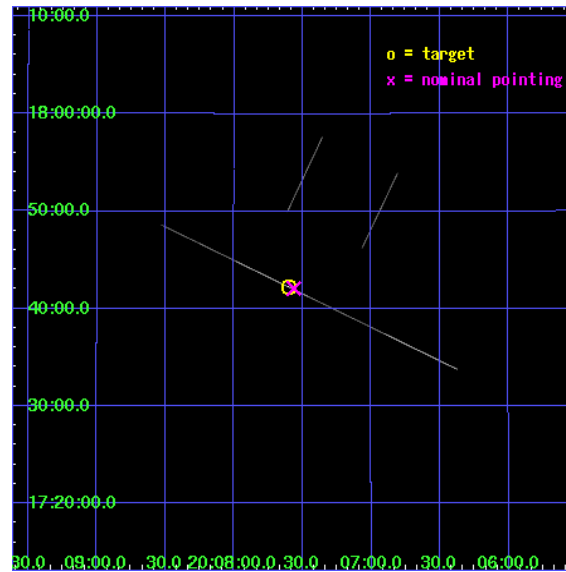
L2 Processing Date : Dec 19 2006

Contents

1	Front	2
2	OBI	3
2.1	OBI	3
2.1.1	Images	3
2.1.2	Bias	3
2.1.3	Parameters	4
2.1.4	Events	4
2.2	Compared Parameters	5
2.3	Aspect	6
2.4	Star Slots	9
2.4.1	Slot 3	9
2.4.2	Slot 4	10
2.4.3	Slot 5	11
2.4.4	Slot 7	12
2.5	FID Slots	13
2.5.1	Slot 0	13
2.5.2	Slot 1	14
2.5.3	Slot 2	15
A	Summary	16
A.1	Status	16
A.2	Comments	16

1 Front

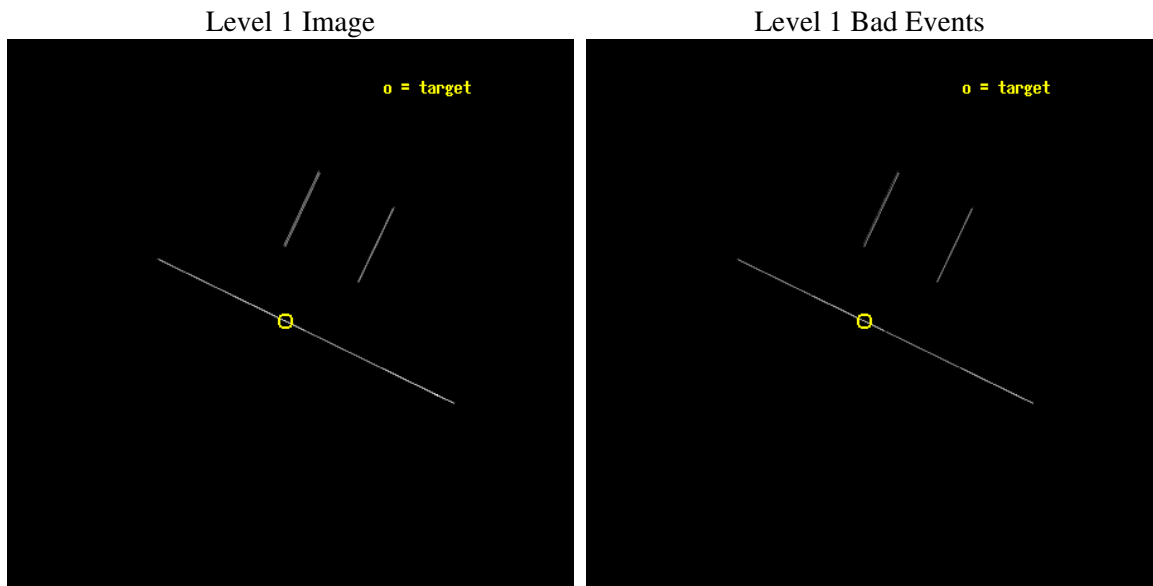
seq_num	300065
obs_id	2512
title	FIRST X-RAY OBSERVATIONS DURING AN EXTREMELY RARE OUTBURST OF WZ SGE
observer	Dr Erik Kuulkers
object	WZ SGE
ra_targ	301.900833
dec_targ	17.704167
ra_nom	301.8909567431
dec_nom	17.701502225859
roll_nom	205.64091537956
revision	4
ontime	4906.6195161194
livetime	4887.4530336345
ontime2	4908.0816028714
ontime3	4908.0815788656
ontime5	4906.6195187122
ontime6	4908.0798647553
ontime7	4906.6195161194
ontime8	4908.0798624903
l2events	60487



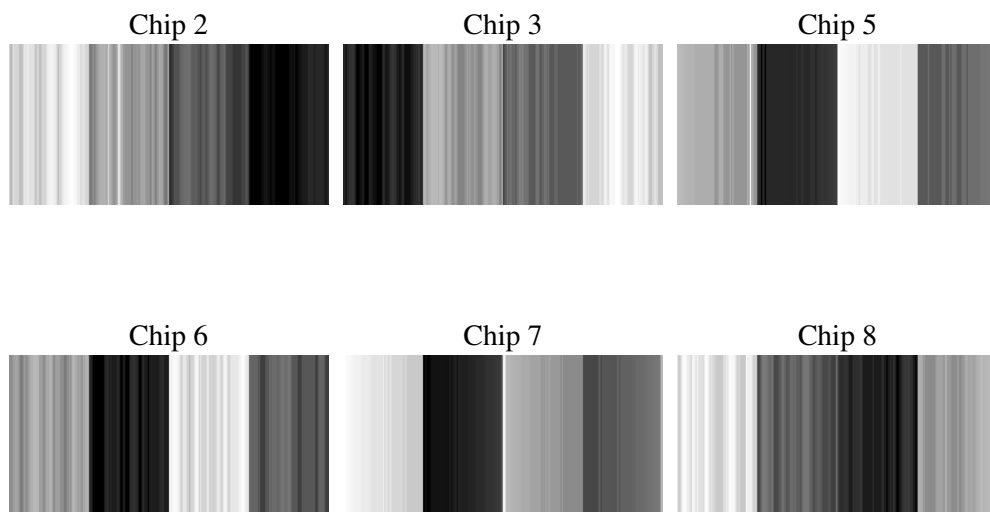
2 OBI

2.1 OBI

2.1.1 Images



2.1.2 Bias



2.1.3 Parameters

obi_num	0
ascdsver	7.6.9
caldsver	3.2.4
date	2006-12-19T14:32:27
revision	4

sched_exp_time	4771.000000
ontime	5709.8160822541
ontime2	5143.6664214879
ontime3	5161.0829456449
ontime5	5819.256422773
ontime6	5177.2168090045
ontime7	5709.8160822541
ontime8	5188.8898905516
l1events	179115

2.1.4 Events

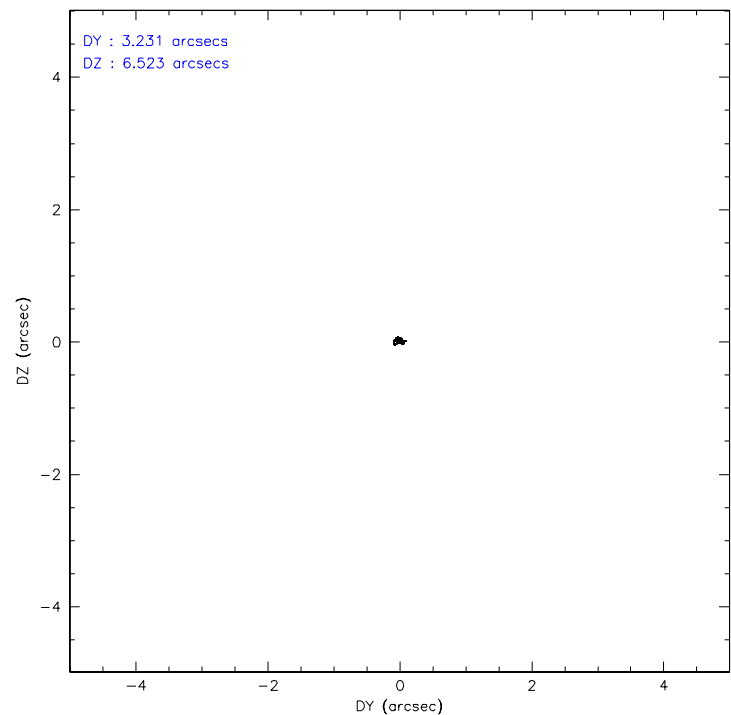
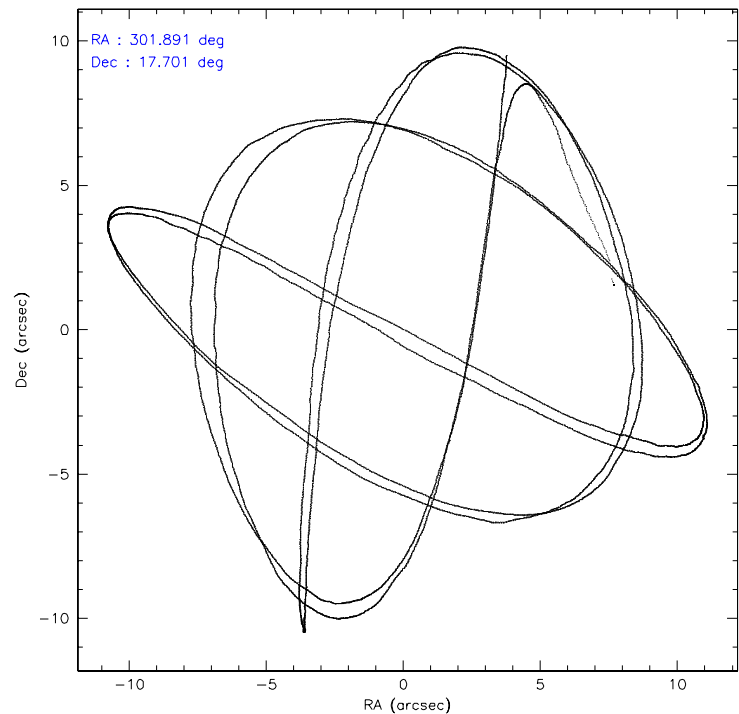
	ccd 2	ccd 3	ccd 5	ccd 6	ccd 7	ccd 8
level 1 events	14190	14776	60172	15117	52952	21908
rejected events	8870	9014	29026	9664	30482	11056
rejected %	62%	61%	48%	63%	57%	50%

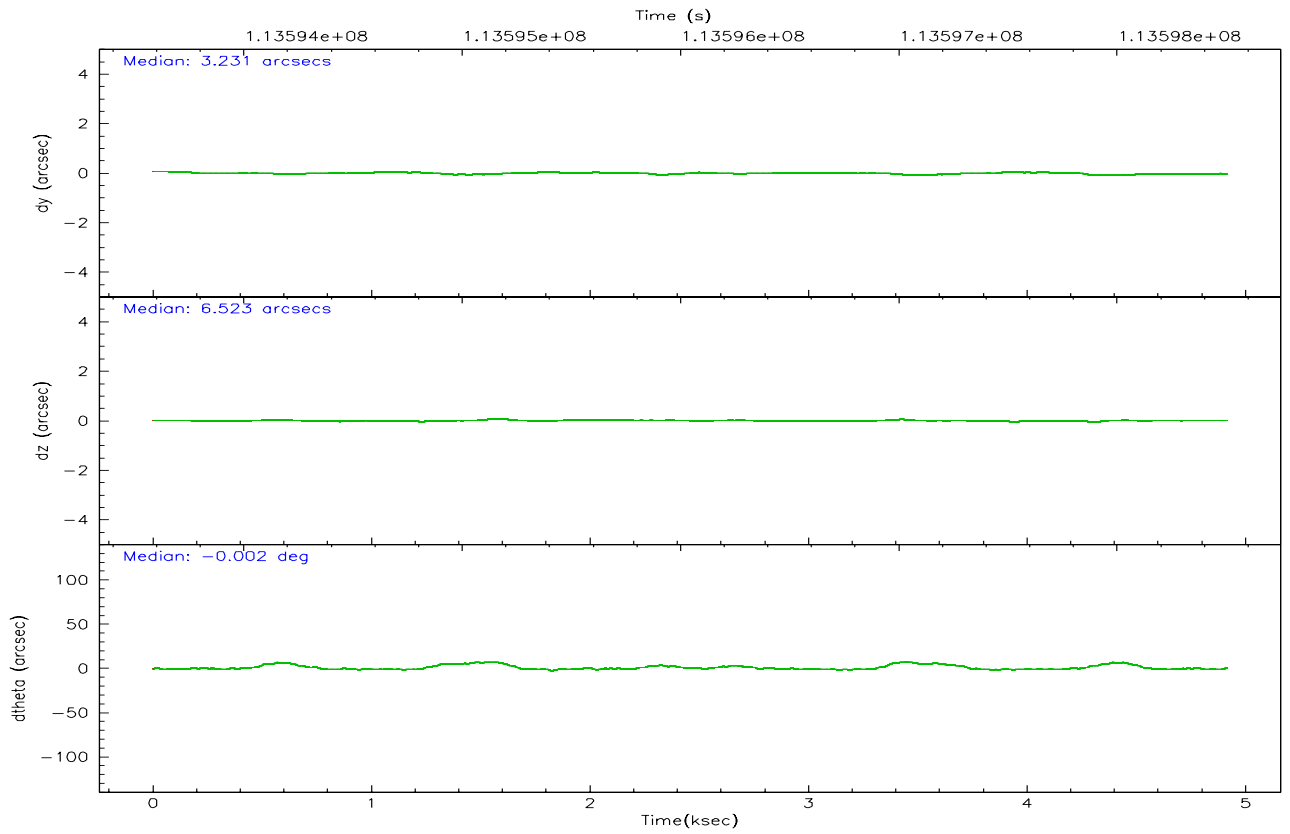
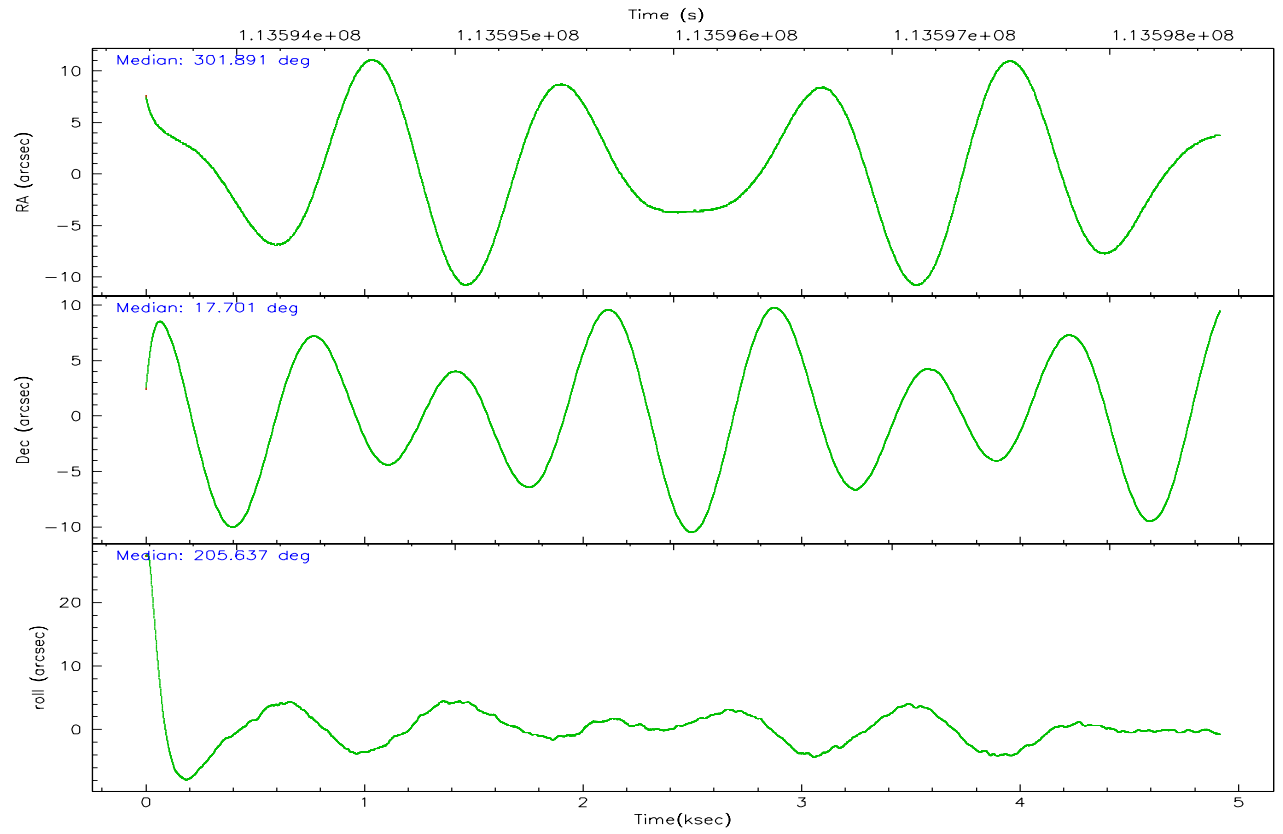
	ccd 2	ccd 3	ccd 5	ccd 6	ccd 7	ccd 8
grade 0 events	1551	1643	12309	1445	6833	3434
	10%	11%	20%	9%	12%	15%
grade 1 events	27	19	33	38	56	50
	0%	0%	0%	0%	0%	0%
grade 2 events	6931	7120	20612	7459	14944	8846
	48%	48%	34%	49%	28%	40%
grade 3 events	928	1072	981	920	2925	1566
	6%	7%	1%	6%	5%	7%
grade 4 events	925	953	953	869	2767	1579
	6%	6%	1%	5%	5%	7%
grade 5 events	1202	1221	3058	1285	3964	1958
	8%	8%	5%	8%	7%	8%
grade 6 events	2626	2748	22226	3101	21463	4475
	18%	18%	36%	20%	40%	20%
grade 7 events	0	0	0	0	0	0
	0%	0%	0%	0%	0%	0%

2.2 Compared Parameters

Parameter	Planned	Actual	Parameter	Planned	Actual
Instrument	ACIS	ACIS	Obspar format version number	6	6
Detector	ACIS-235678	ACIS-235678	Obspar file type	PREDICTED	ACTUAL
Grating	NONE	NONE	Obspar update status	NONE	UPDATED
Data mode	CC33_FAINT	CC33_FAINT	Number of optional ACIS chips dropped	0	0
Observation mode	POINTING	POINTING	On-chip summing requested	N	N
Pointing RA	301.906861	301.8909567430977	Subarray requested	NONE	NONE
Pointing Dec	17.724267	17.70150222585943	Alternating exposures requested	N	N
Pointing Roll	205.479348	205.6409153795644	Primary exposure time	0.000000	0
Window start time	113454064.184000	113454064.184000			
Window stop time	113713264.184000	113713264.184000			
SIM focus pos (mm)	-0.684267	-0.6828225247311905			
SIM defocus (mm)	0	0.001444936568705701			
SIM translation stage pos (mm)	-190.132523	-190.1400660498719			
SIM translation stage offset (mm)	0	0.00754346686406393			
Observation start time	113593730.184000	113592656.50945			
Observation start date	2001-08-07T17:47:46	2001-08-07T17:30:56			
Observation end time	113598501.184000	113600217.93475			
Observation end date	2001-08-07T19:07:17	2001-08-07T19:36:57			
Read mode	CONTINUOUS	CONTINUOUS			

2.3 Aspect



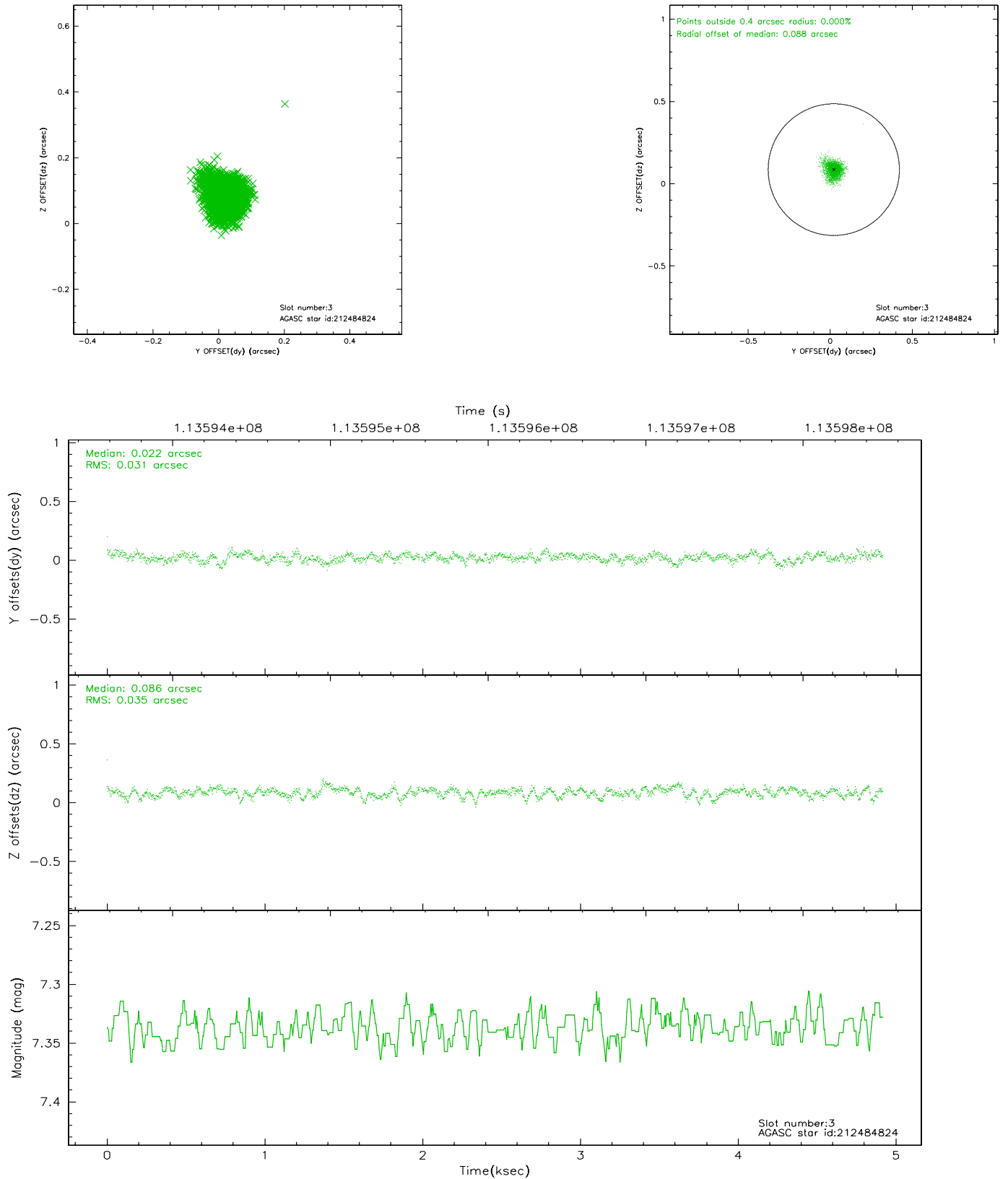


Slot Statistics

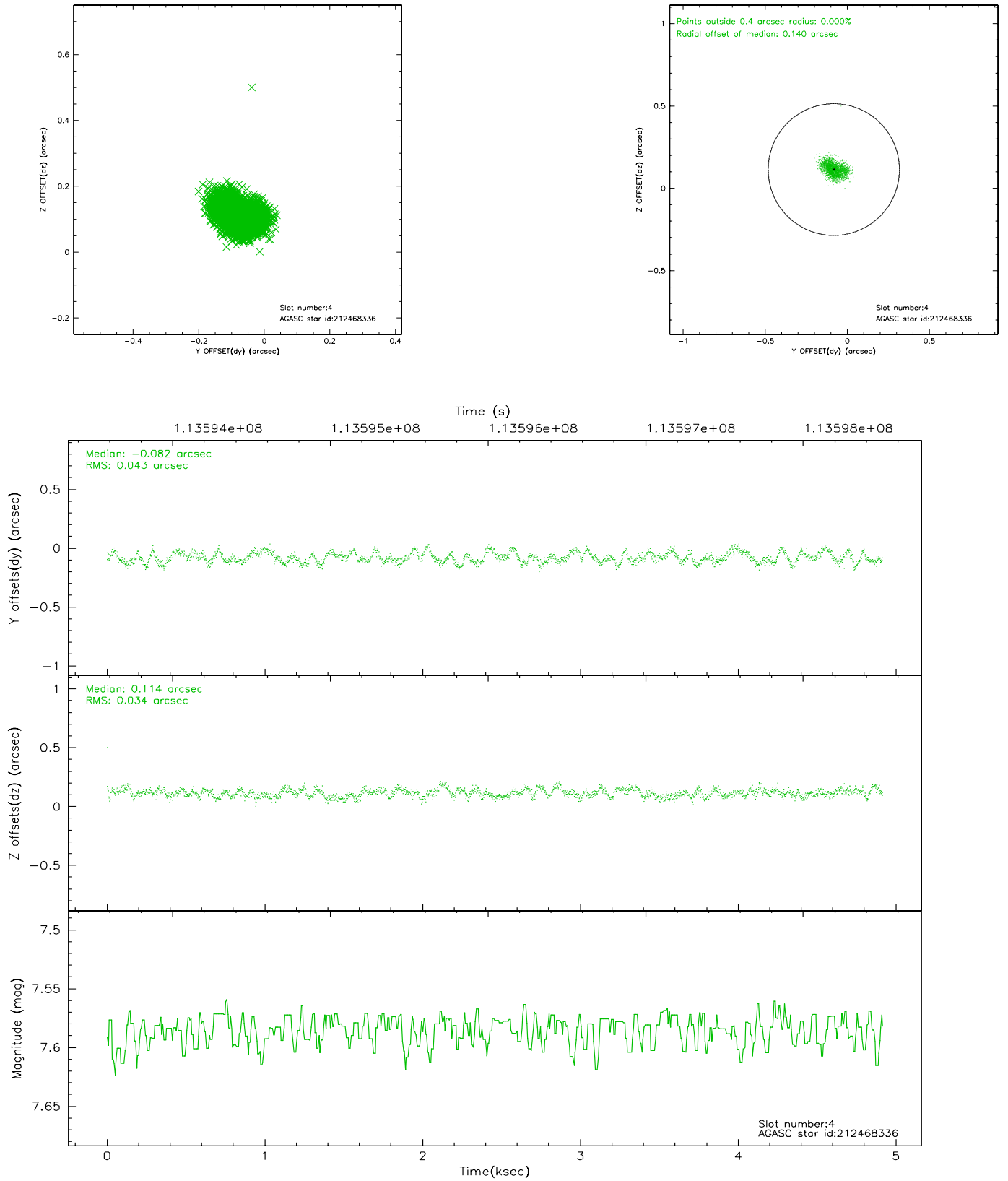
slot	status	id	mag	n_pts	med_dy	med_dz	dr1	dr2	ra	dec	mean_y	mean_z
0	FID	ACIS-S-3	7.36	1198	-0.063	-0.030	0.014	0.045	0.000000	0.000000	57.19	-1856.77
1	FID	ACIS-S-5	7.24	1197	0.060	-0.038	0.016	0.073	0.000000	0.000000	-1808.81	172.93
2	FID	ACIS-S-6	7.35	1198	-0.021	0.080	0.024	0.077	0.000000	0.000000	404.42	818.39
3	GUIDE	212484824	7.34	2395	0.022	0.086	0.048	0.080	301.436883	17.597881	1651.60	-285.51
4	GUIDE	212468336	7.58	2396	-0.082	0.114	0.058	0.089	301.479163	18.244435	515.40	-2321.85
5	GUIDE	212599608	7.83	2395	-0.085	-0.260	0.079	0.111	302.041368	17.043012	637.80	2410.97
6	OMITTED		0.00	0	0.000	0.000	0.000	0.000	0.000000	0.000000	0.00	0.00
7	GUIDE	212600320	8.67	2395	0.136	0.064	0.061	0.098	302.393008	18.138679	-2142.93	-633.20

2.4 Star Slots

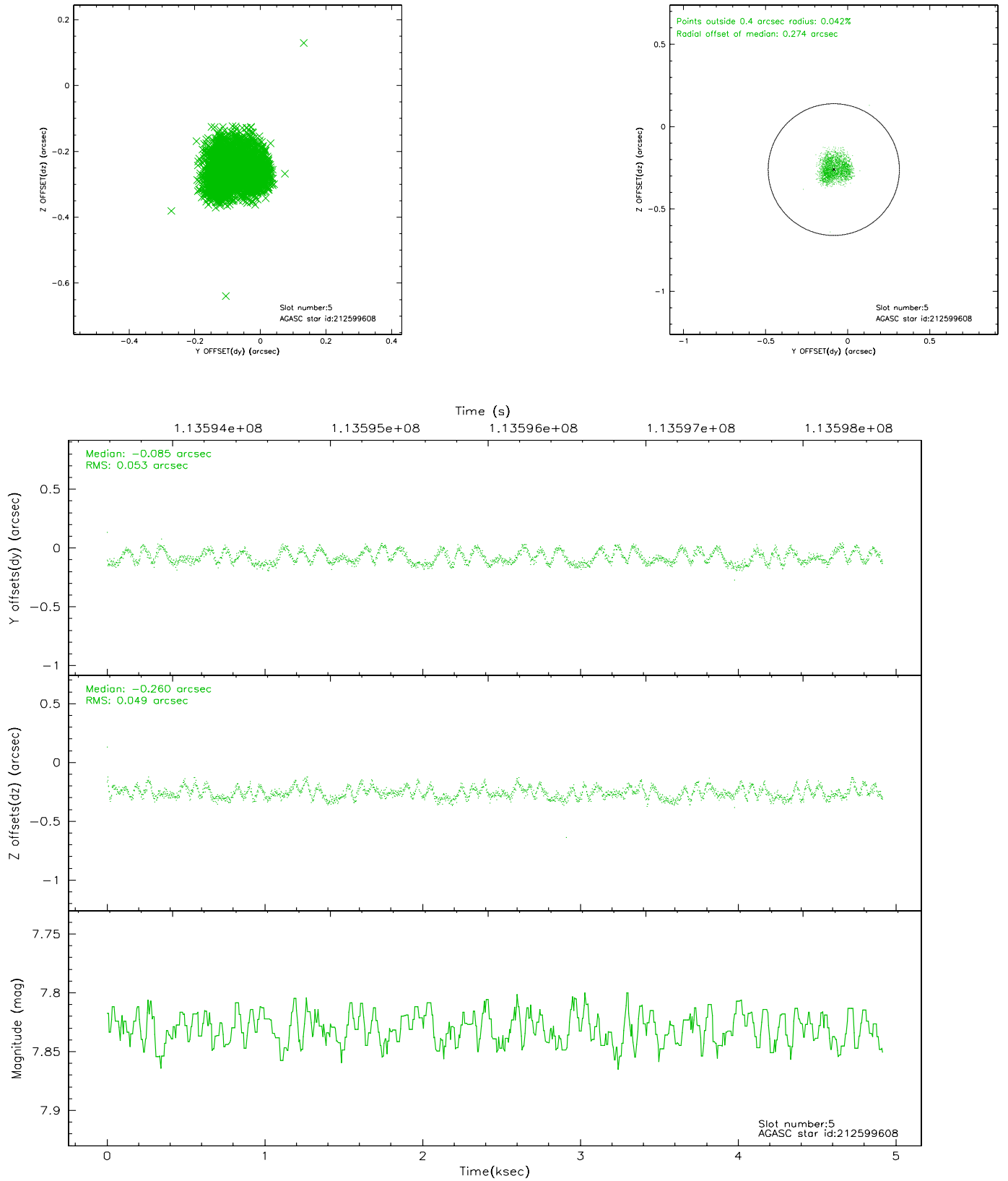
2.4.1 Slot 3



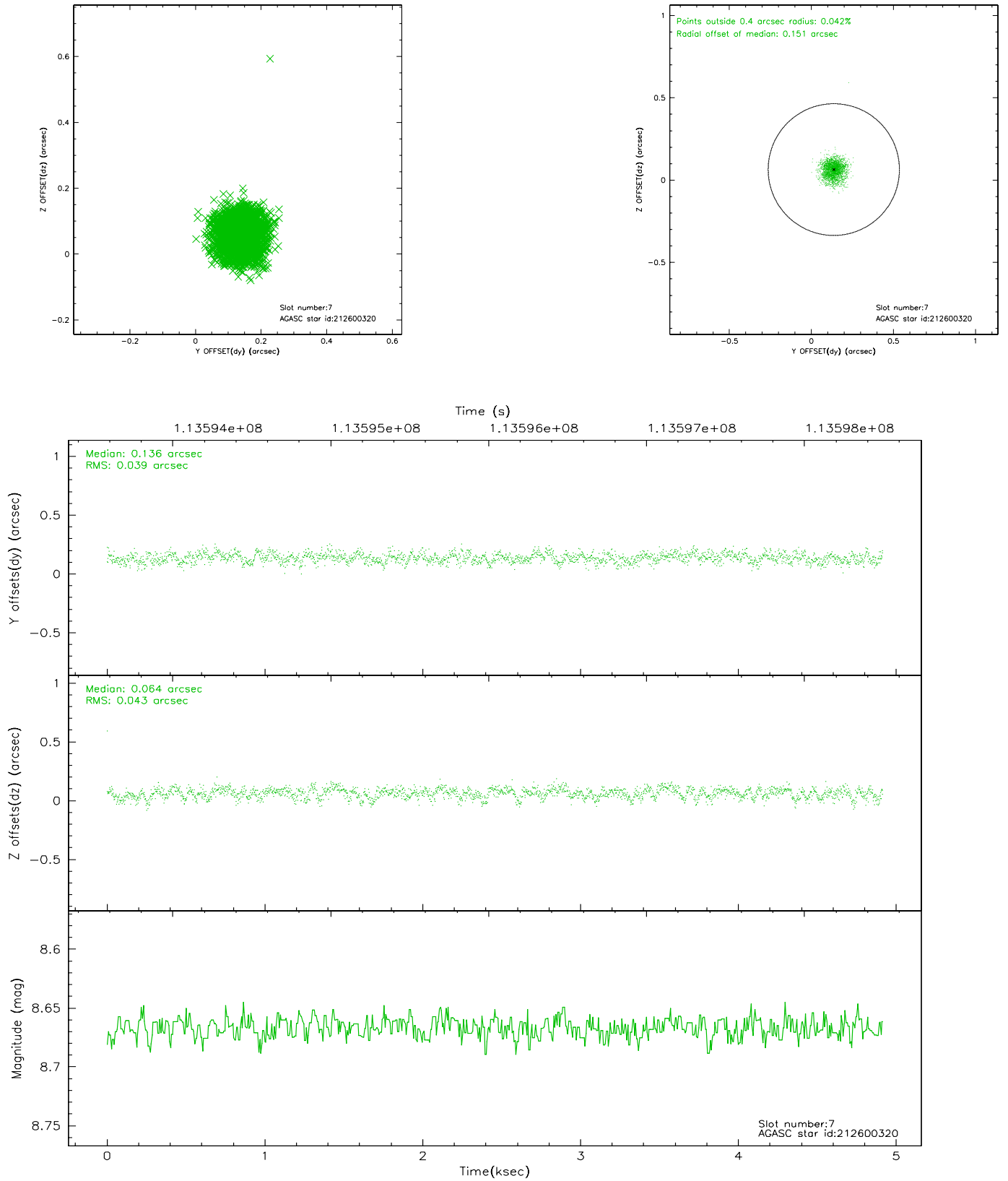
2.4.2 Slot 4



2.4.3 Slot 5

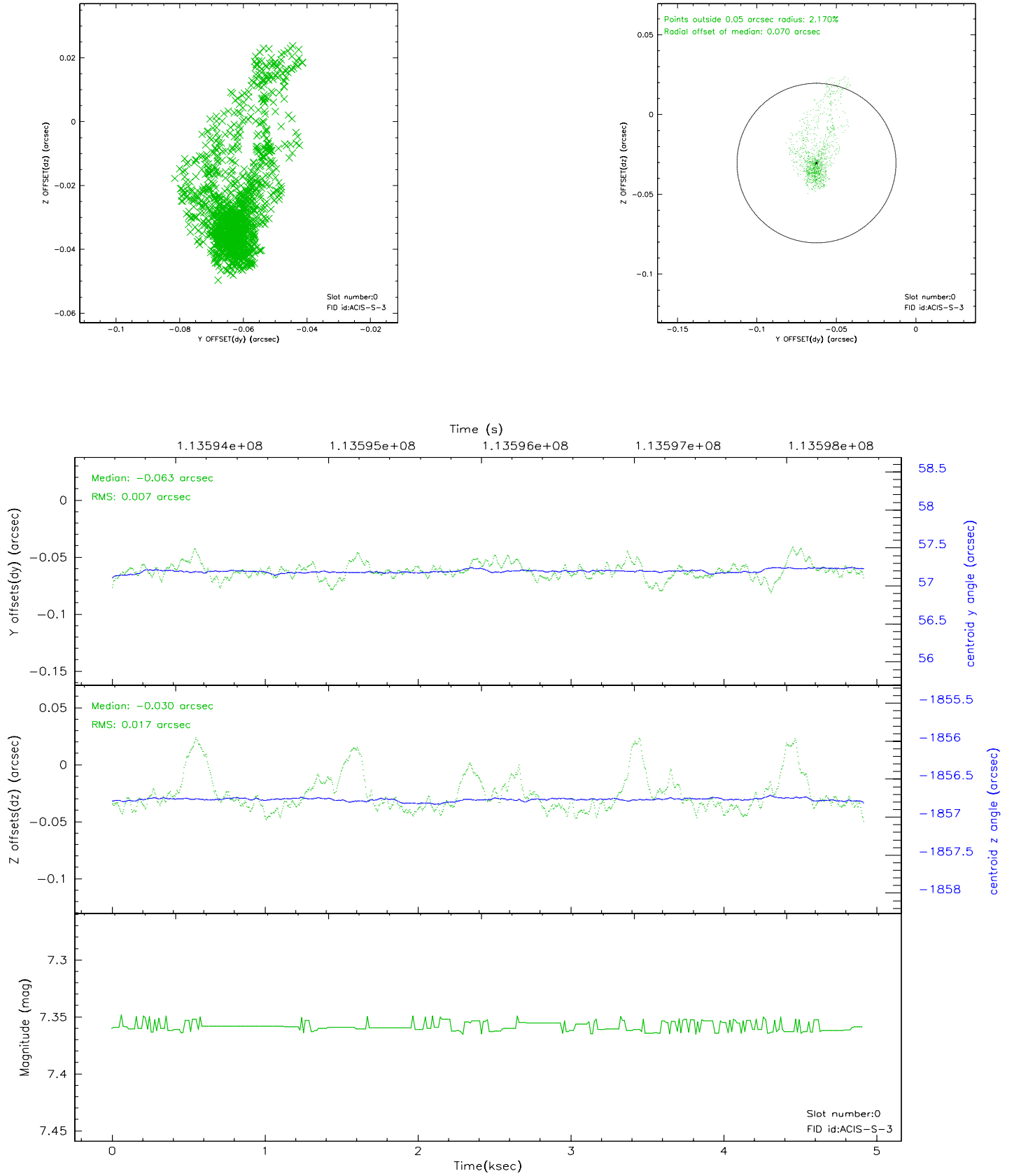


2.4.4 Slot 7

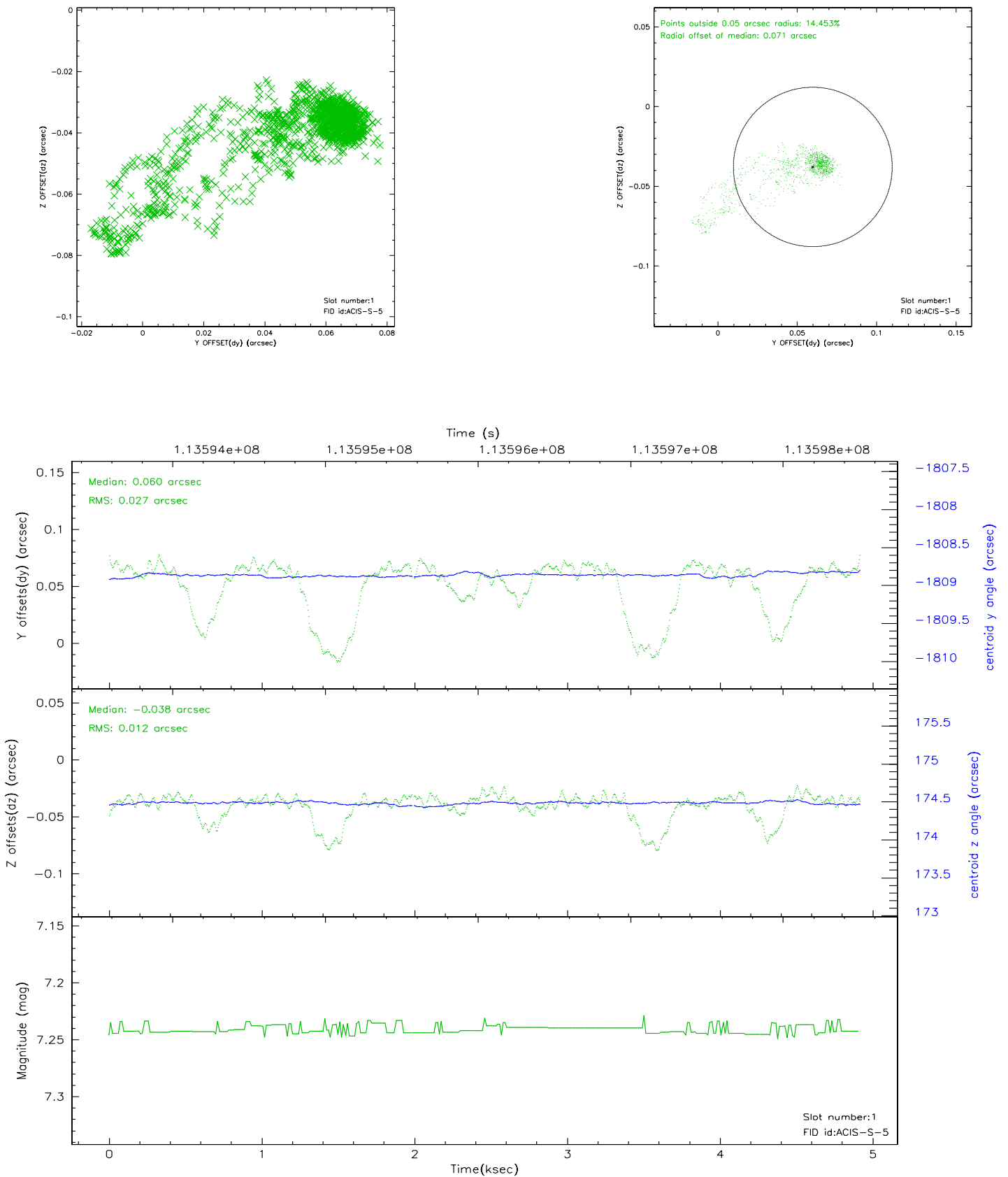


2.5 FID Slots

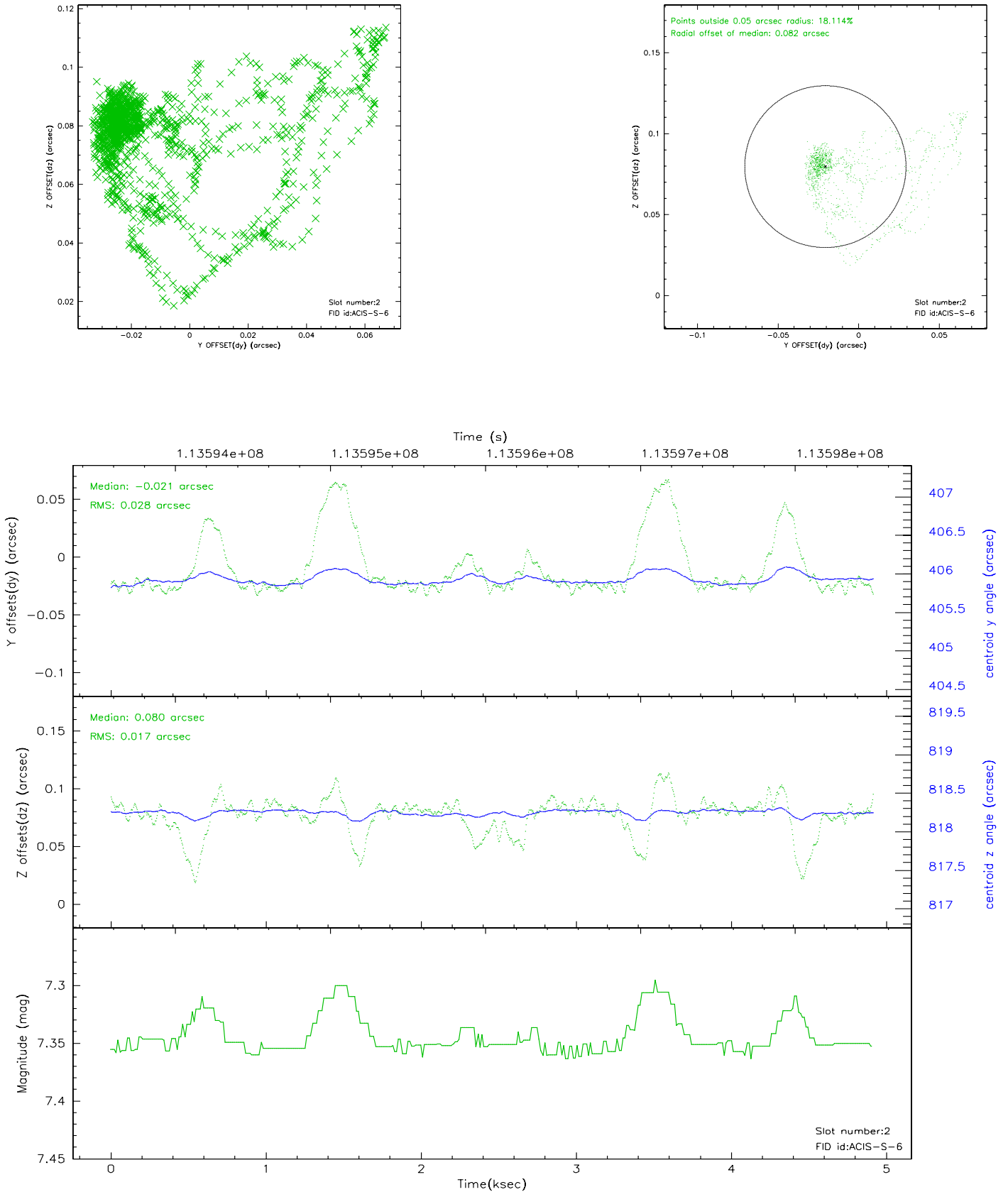
2.5.1 Slot 0



2.5.2 Slot 1



2.5.3 Slot 2



A Summary

A.1 Status

V&V Scientist	Jen Lauer
V&V Date (YYYY-MM-DD)	2010.10.01
V&V Edition	2
V&V Disposition and Status	OK
V&V Charge Time	4.91

A.2 Comments

The guide star in slot 6 was manually excluded from the processing due to poor data quality.