

V&V Reference Report

L2 ASCDS Version : 7.6.10

Observation 2322 - L2 Version 001
Chandra X-Ray Center

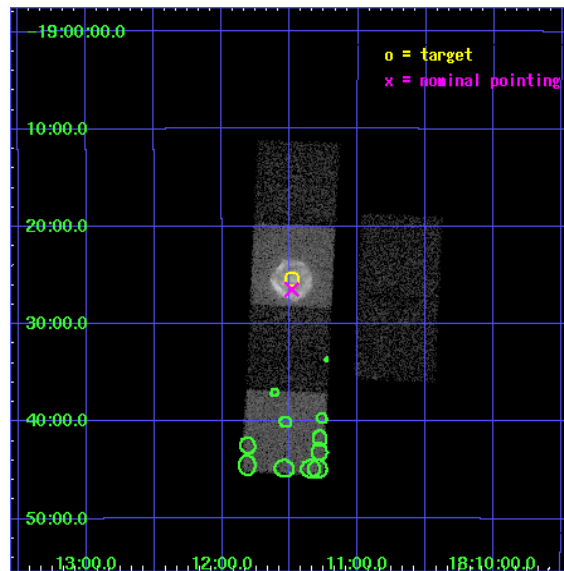
L2 Processing Date : Jun 12 2007

Contents

1	Front	2
2	OBI	3
2.1	OBI	3
2.1.1	Images	3
2.1.2	Bias	3
2.1.3	Parameters	4
2.1.4	Events	4
2.2	Compared Parameters	5
2.3	Aspect	6
2.4	Star Slots	9
2.4.1	Slot 3	9
2.4.2	Slot 4	10
2.4.3	Slot 5	11
2.4.4	Slot 6	12
2.4.5	Slot 7	13
2.5	FID Slots	14
2.5.1	Slot 0	14
2.5.2	Slot 1	15
2.5.3	Slot 2	16
3	Point Sources	17
A	Summary	18
A.1	Status	18
A.2	Comments	18

1 Front

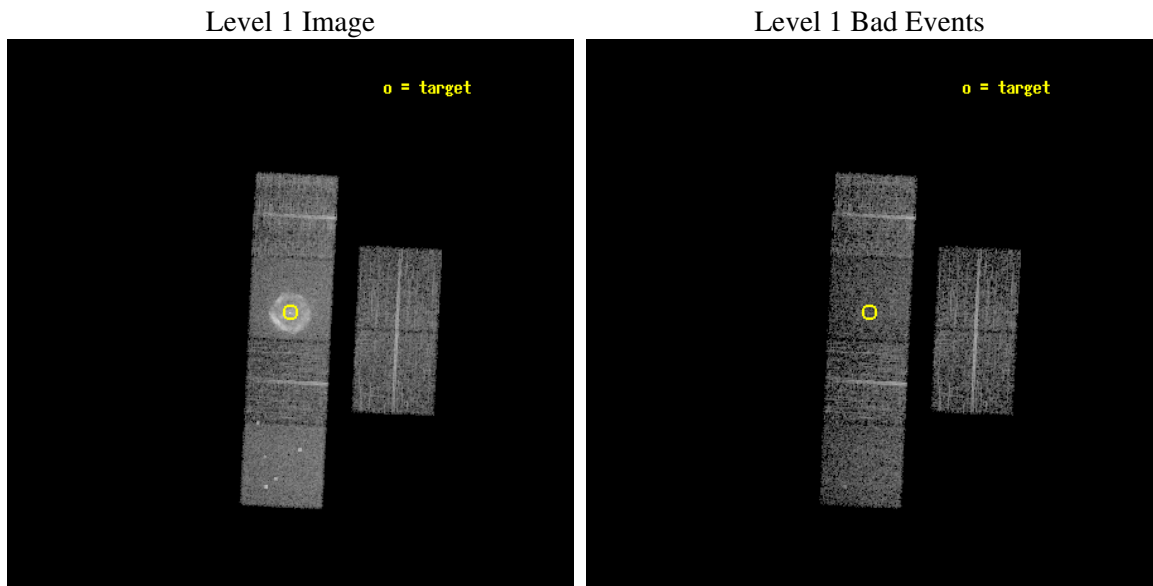
seq_num	500077
obs_id	2322
title	THE HISTORIC SUPERNOVA REMNANT SYSTEM - G11.2-0.3
observer	Professor Victoria Kaspi
object	G11.2-0.3
dtcycle	0
cycle	P
ra_targ	272.8725
dec_targ	-19.423611
ra_nom	272.87150938076
dec_nom	-19.441259165095
roll_nom	272.79982375047
revision	2
ontime	4912.0000045747
livetime	4849.8013028654
ontime2	4912.0000045747
ontime3	4912.0000045747
ontime5	4912.0000045747
ontime6	4908.7590144128
ontime7	4912.0000045747
ontime8	4912.0000045747
l2events	77436



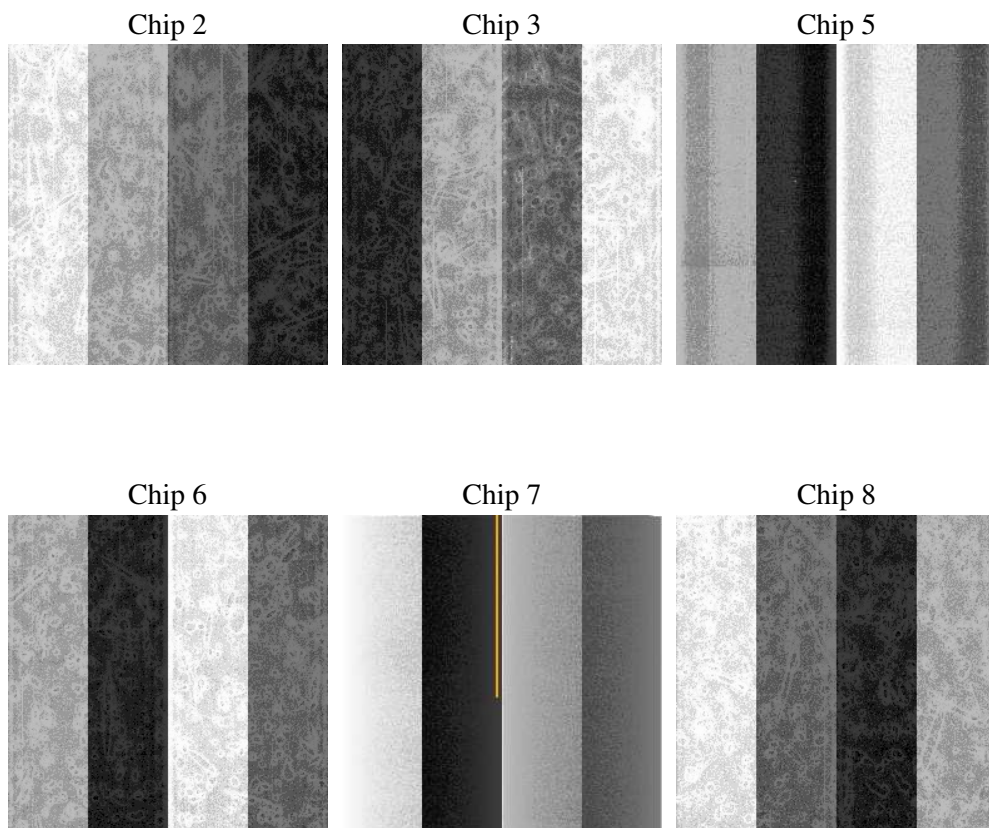
2 OBI

2.1 OBI

2.1.1 Images



2.1.2 Bias



2.1.3 Parameters

obi_num	0
ascdsver	7.6.10
caldsver	3.4.0
date	2007-06-12T10:01:09
revision	2

sched_exp_time	5000.000000
ontime	4912.0000045747
ontime2	4912.0000045747
ontime3	4912.0000045747
ontime5	4912.0000045747
ontime6	4908.7590144128
ontime7	4912.0000045747
ontime8	4912.0000045747
l1events	248414

2.1.4 Events

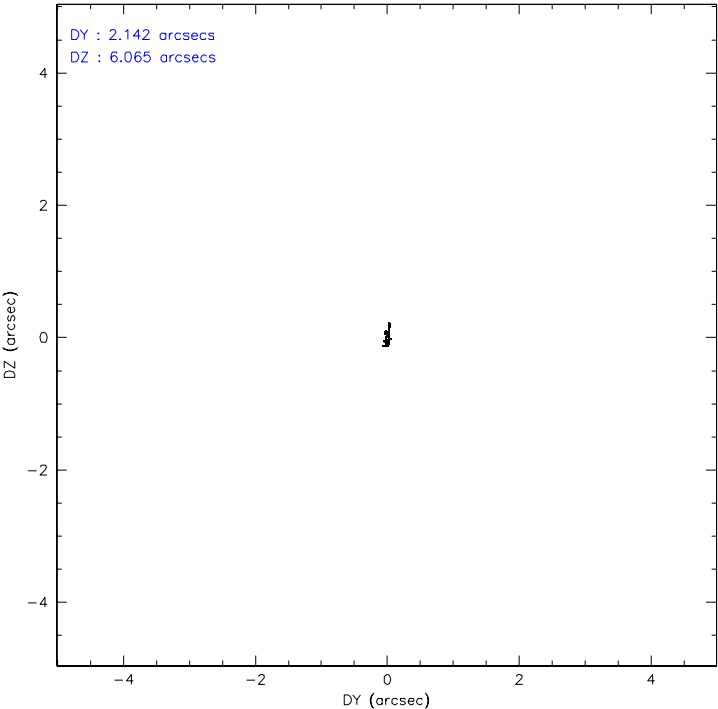
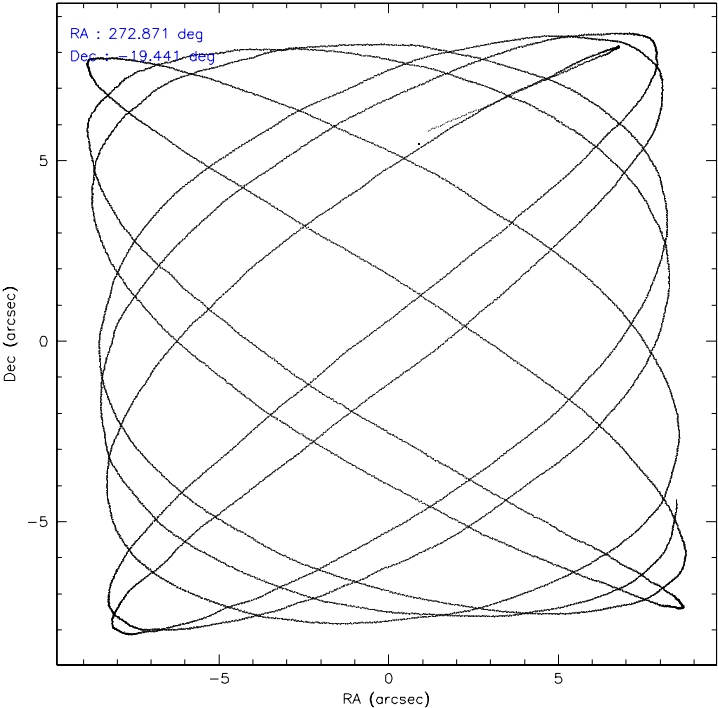
	ccd 2	ccd 3	ccd 5	ccd 6	ccd 7	ccd 8
level 1 events	32503	31467	43278	32772	66674	41720
rejected events	28543	27505	22743	28182	22315	32450
rejected %	87%	87%	52%	85%	33%	77%

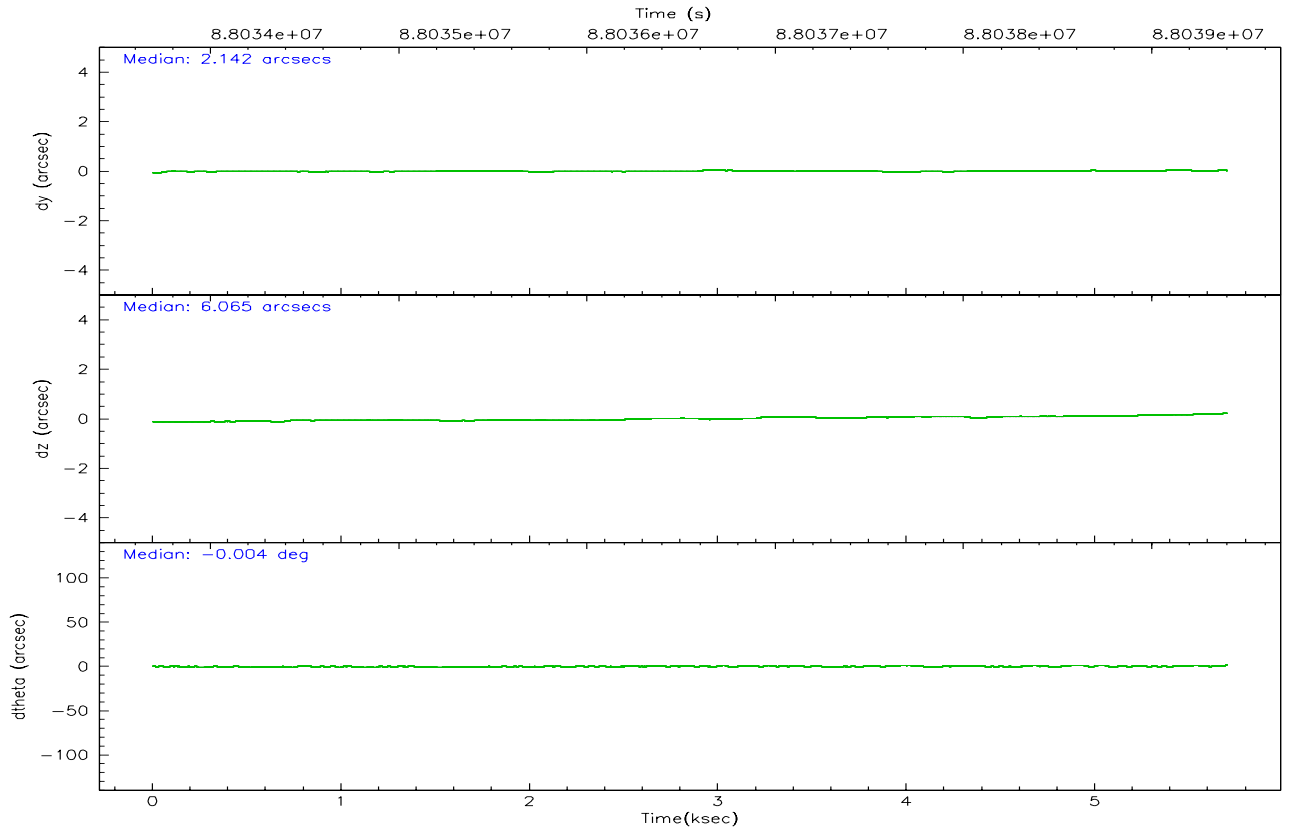
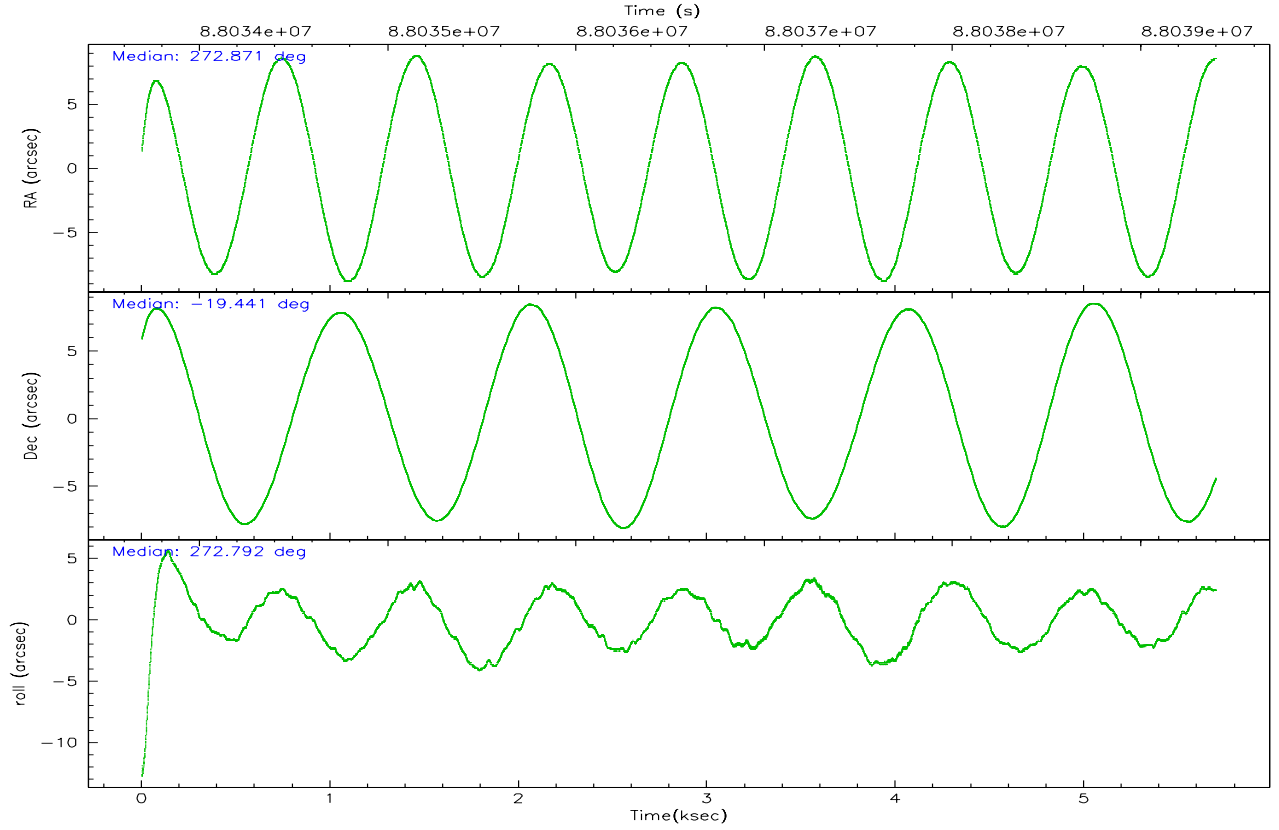
	ccd 2	ccd 3	ccd 5	ccd 6	ccd 7	ccd 8
grade 0 events	1927	1952	3119	2241	8741	3322
	5%	6%	7%	6%	13%	7%
grade 1 events	9	15	165	20	42	16
	0%	0%	0%	0%	0%	0%
grade 2 events	757	713	5632	819	10756	1893
	2%	2%	13%	2%	16%	4%
grade 3 events	339	328	894	430	4939	968
	1%	1%	2%	1%	7%	2%
grade 4 events	337	326	901	424	4748	878
	1%	1%	2%	1%	7%	2%
grade 5 events	1046	1131	3253	1198	3894	1695
	3%	3%	7%	3%	5%	4%
grade 6 events	602	647	10015	684	15237	2235
	1%	2%	23%	2%	22%	5%
grade 7 events	27486	26355	19299	26956	18317	30713
	84%	83%	44%	82%	27%	73%

2.2 Compared Parameters

Parameter	Planned	Actual	Parameter	Planned	Actual
Instrument	ACIS	ACIS	Obspar format version number	6	6
Detector	ACIS-235678	ACIS-235678	Obspar file type	PREDICTED	ACTUAL
Grating	NONE	NONE	Obspar update status	NONE	UPDATED
Data mode	FAINT	FAINT	Number of optional ACIS chips dropped	0	0
Observation mode	POINTING	POINTING	On-chip summing requested	N	N
Pointing RA	272.855611	272.871509380758	Subarray requested	NONE	NONE
Pointing Dec	-19.418342	-19.44125916509506	Alternating exposures requested	N	N
Pointing Roll	272.637938	272.7998237504682	Primary exposure time	0.000000	3.2
SIM focus pos (mm)	-0.684267	-0.6828225247311905			
SIM defocus (mm)	0	0.001444936568705701			
SIM translation stage pos (mm)	-190.132523	-190.1400660498719			
SIM translation stage offset (mm)	0	0.00754346686406393			
Observation start time	88034400.184000	88033186.33517601			
Observation start date	2000-10-15T21:58:56	2000-10-15T21:39:46			
Observation end time	88039400.184000	88039834.997927			
Observation end date	2000-10-15T23:22:16	2000-10-15T23:30:34			
Read mode	TIMED	TIMED			

2.3 Aspect



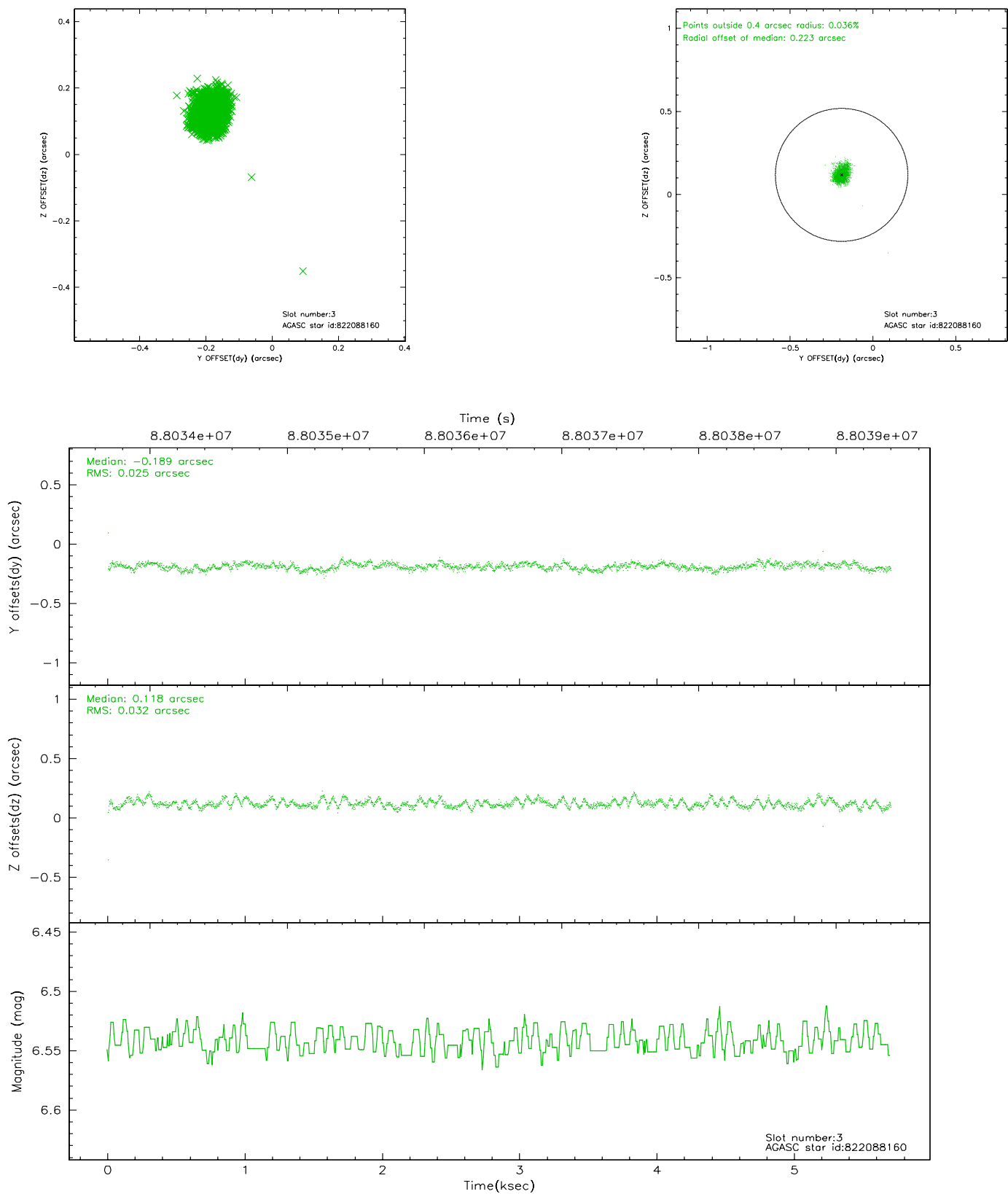


Slot Statistics

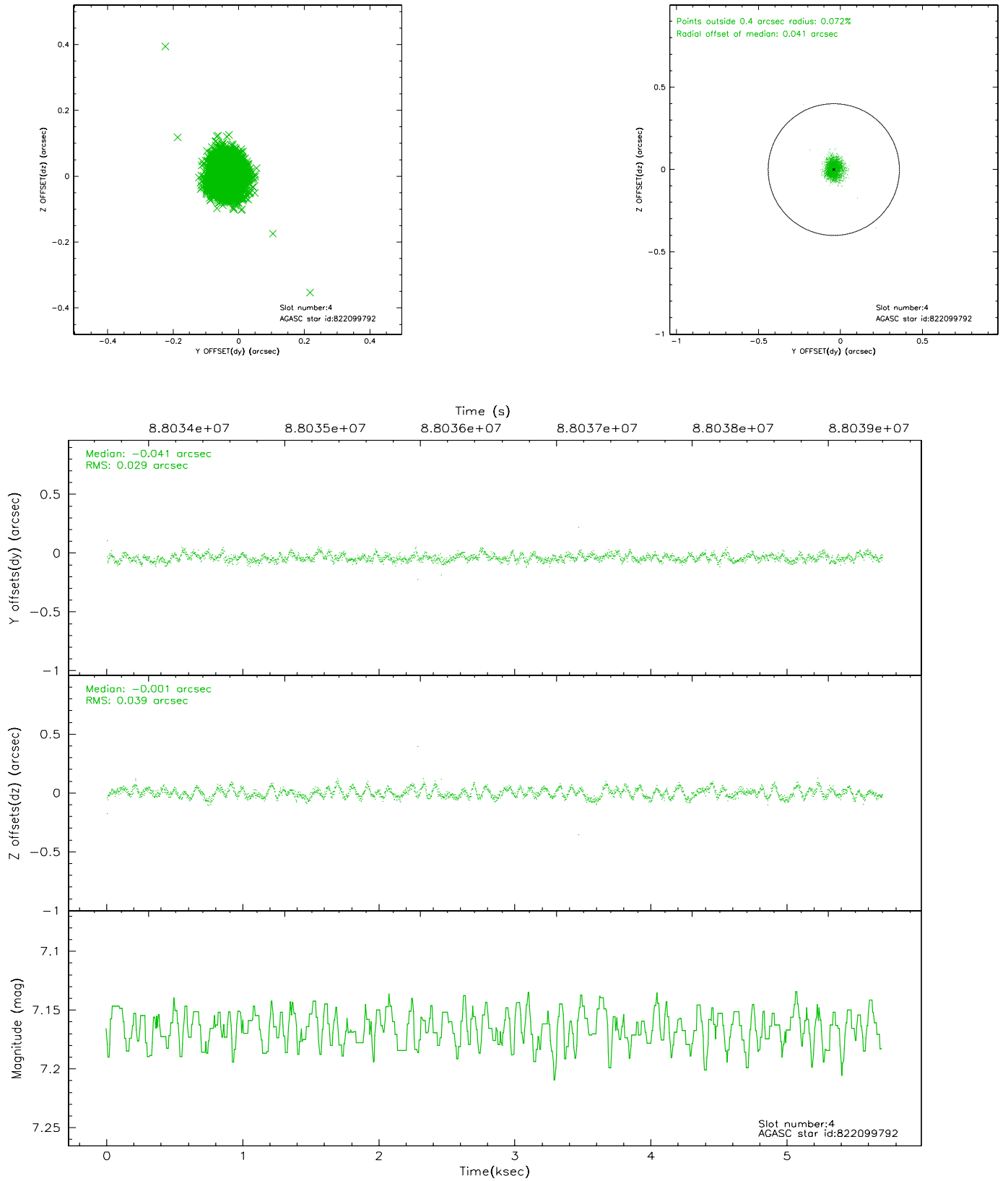
slot	status	id	mag	n_pts	med_dy	med_dz	dr1	dr2	ra	dec	mean_y	mean_z
0	FID	ACIS-S-3	7.36	1390	-0.080	-0.047	0.008	0.014	0.000000	0.000000	58.36	-1856.32
1	FID	ACIS-S-4	7.20	1390	-0.028	0.065	0.006	0.010	0.000000	0.000000	2158.60	180.17
2	FID	ACIS-S-5	7.23	1391	0.080	-0.008	0.007	0.011	0.000000	0.000000	-1806.17	175.04
3	GUIDE	822088160	6.54	2782	-0.189	0.118	0.042	0.068	272.729284	-18.869551	-1993.60	-338.70
4	GUIDE	822099792	7.17	2782	-0.041	-0.001	0.050	0.078	273.061248	-19.432823	83.51	695.29
5	GUIDE	822091704	8.10	2777	-0.185	-0.148	0.058	0.093	272.220028	-18.943658	-1802.88	-2083.21
6	GUIDE	822101160	8.46	2781	0.284	-0.105	0.066	0.109	272.245889	-20.018987	2068.56	-2160.11
7	GUIDE	822098064	8.27	2780	0.131	0.136	0.060	0.093	273.233974	-19.745214	1236.38	1226.43

2.4 Star Slots

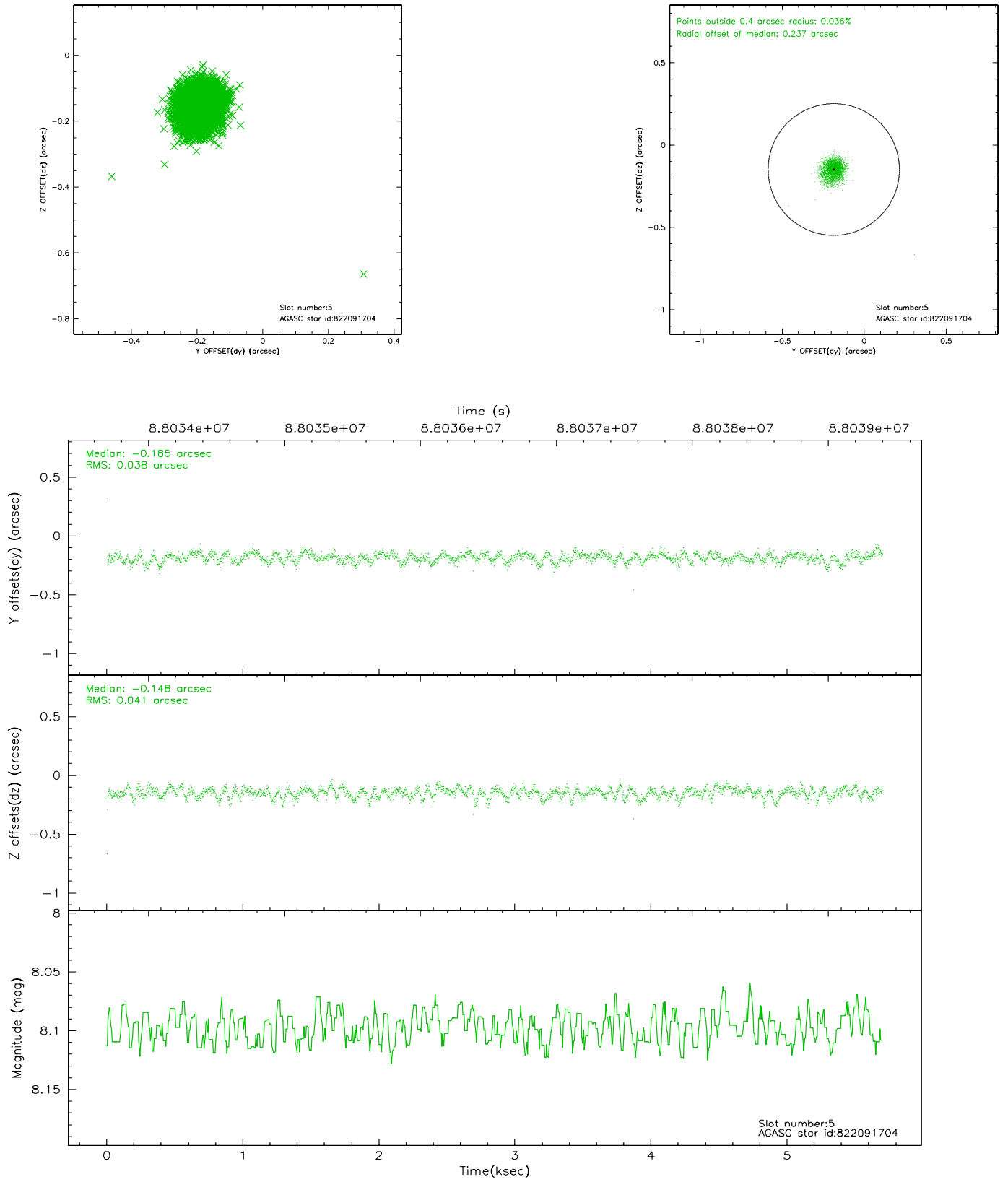
2.4.1 Slot 3



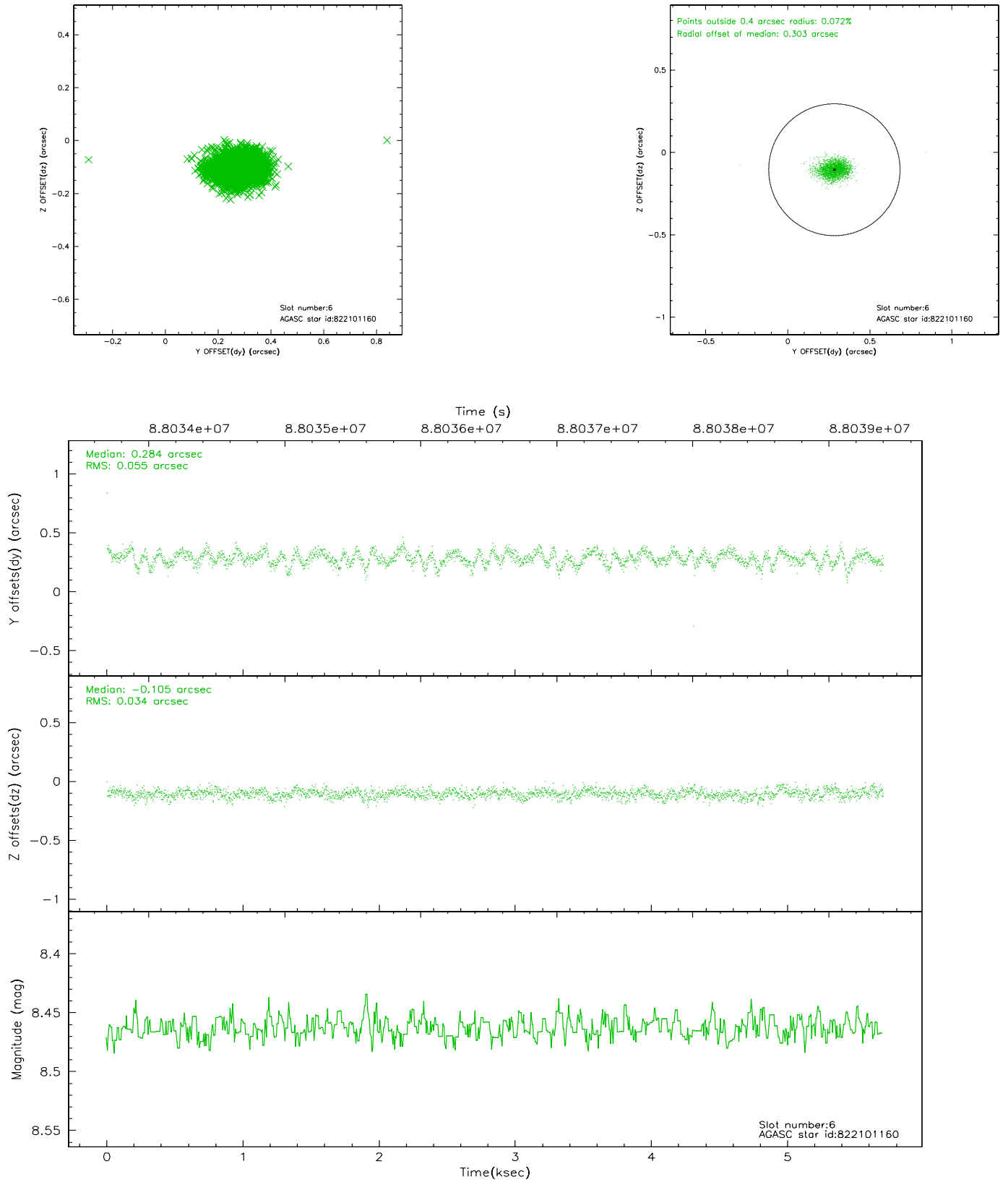
2.4.2 Slot 4



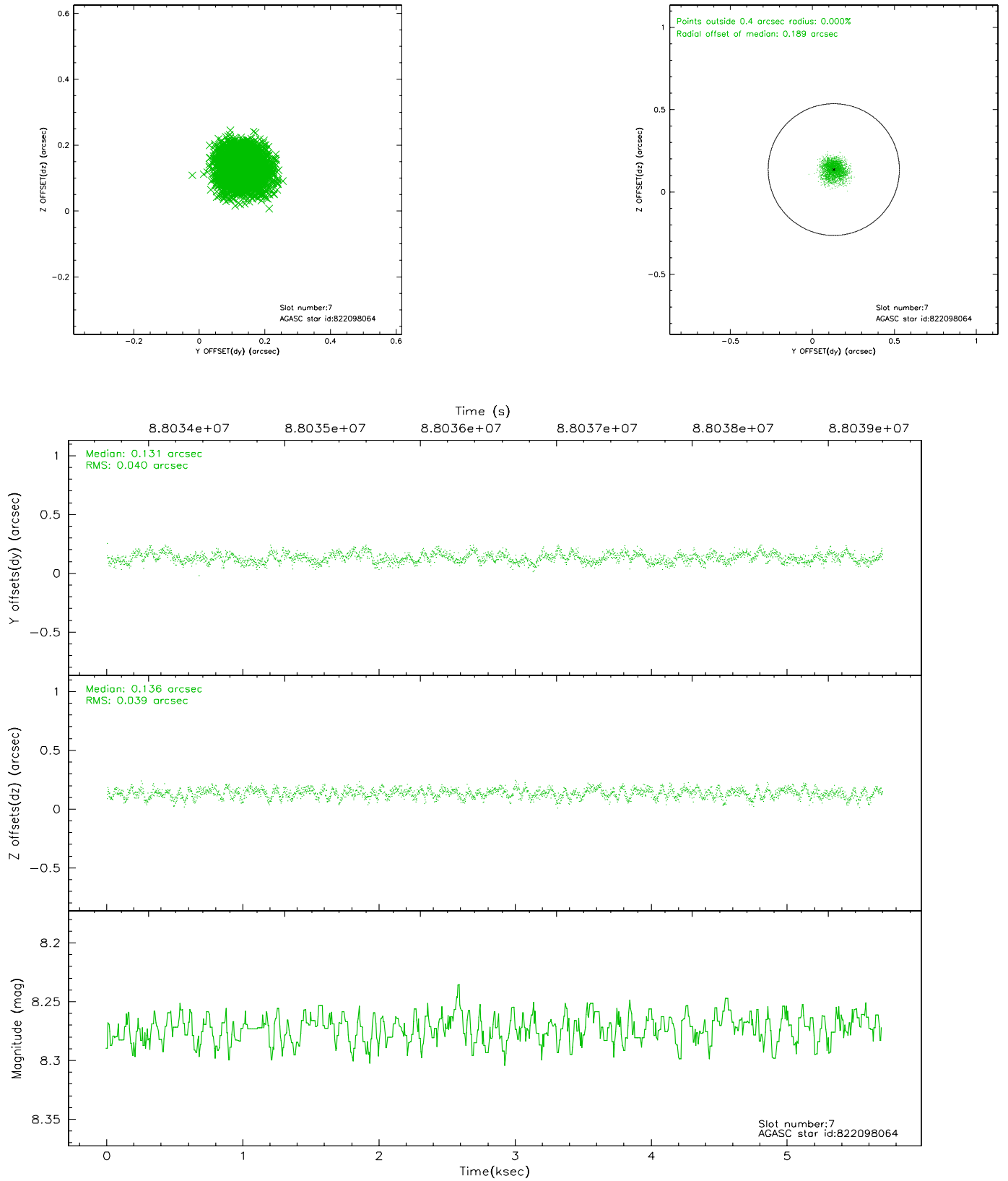
2.4.3 Slot 5



2.4.4 Slot 6

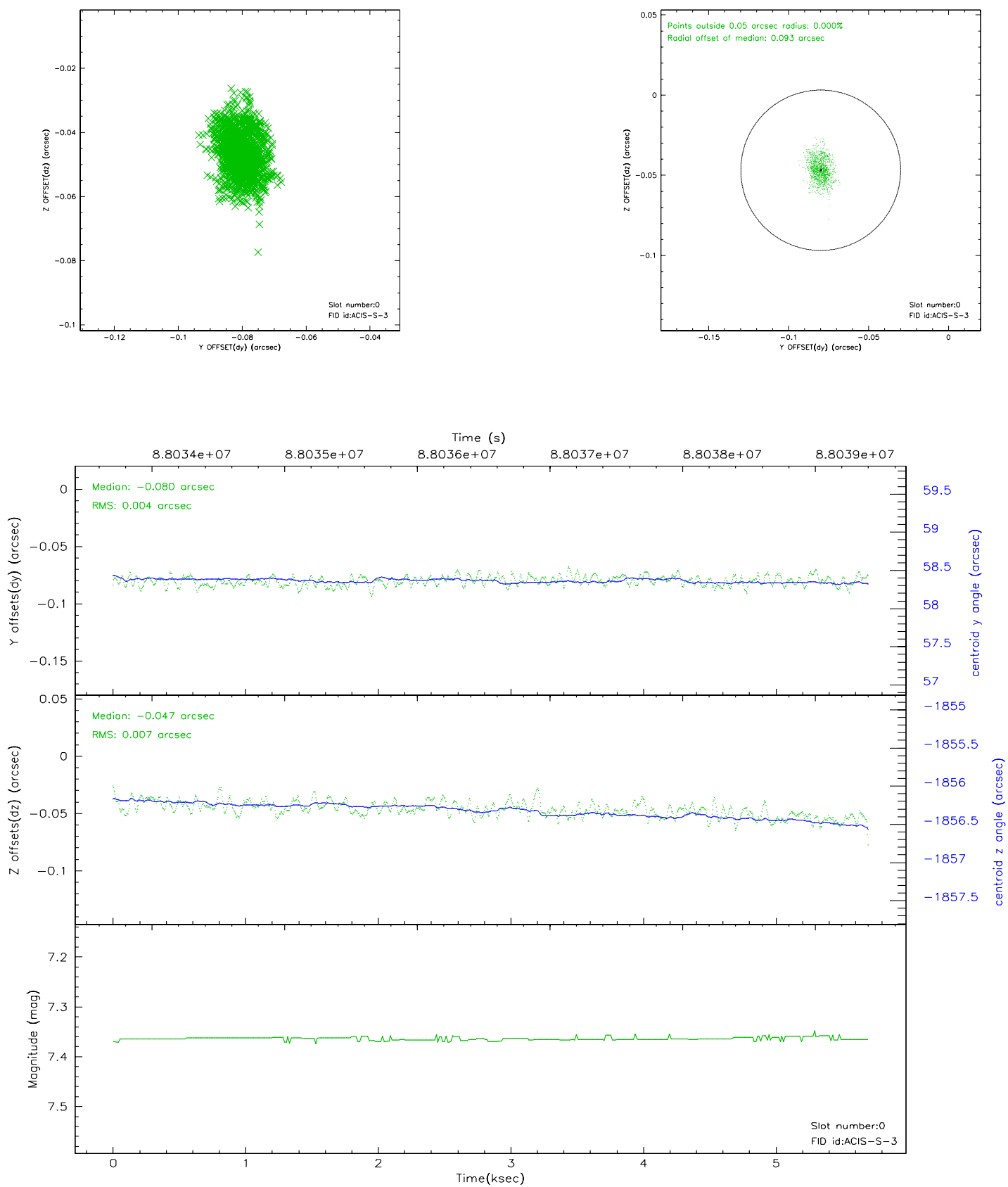


2.4.5 Slot 7

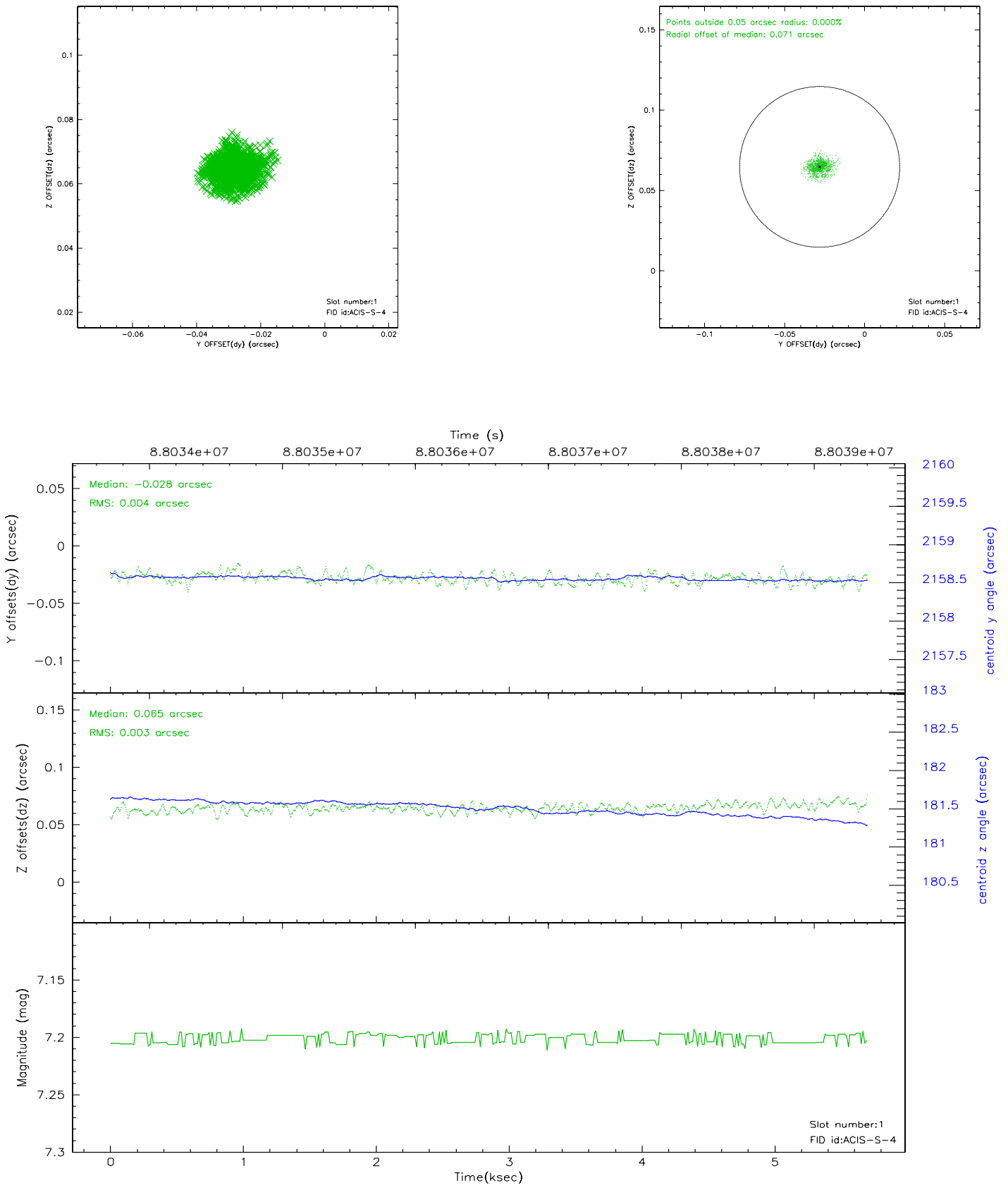


2.5 FID Slots

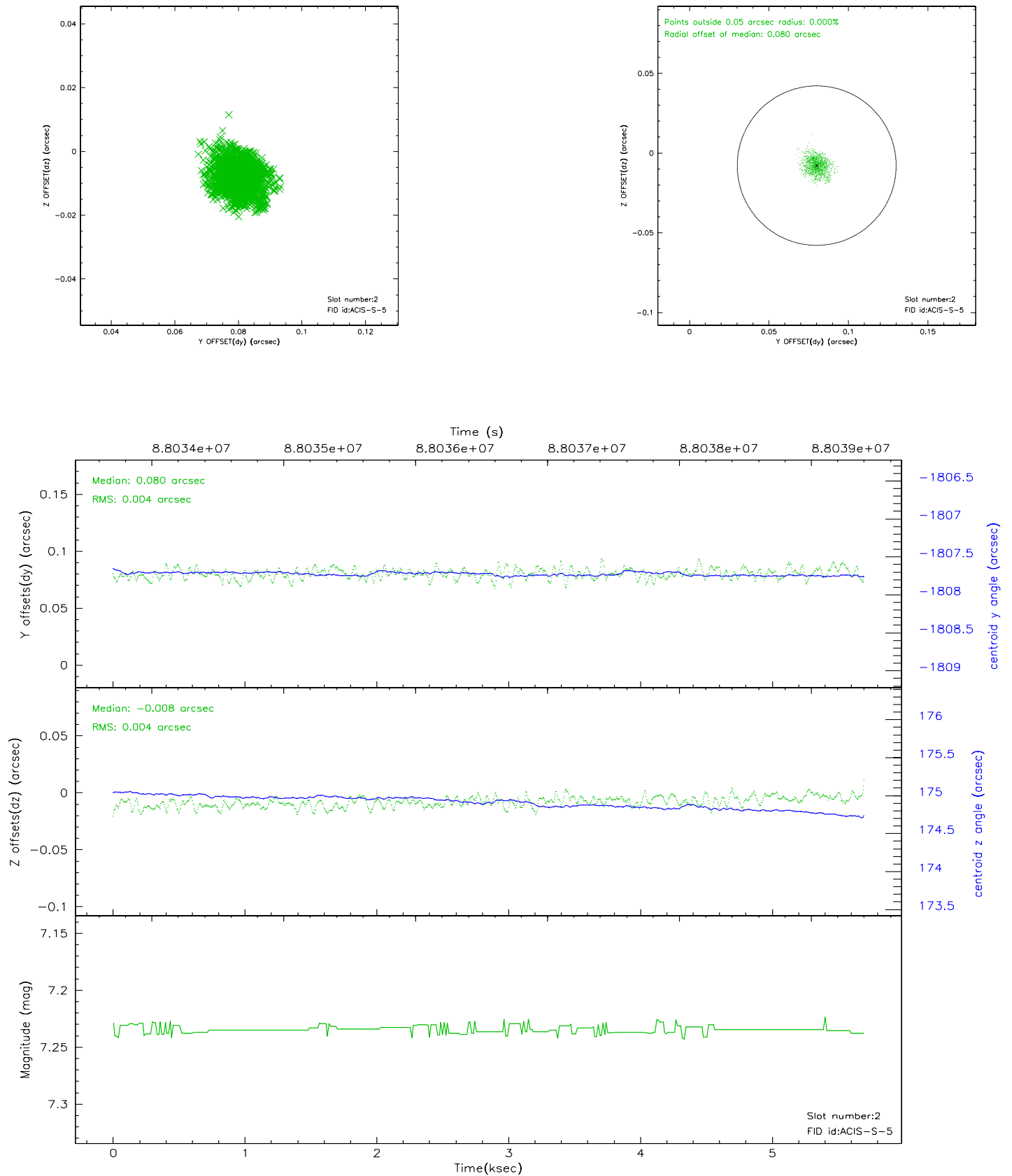
2.5.1 Slot 0



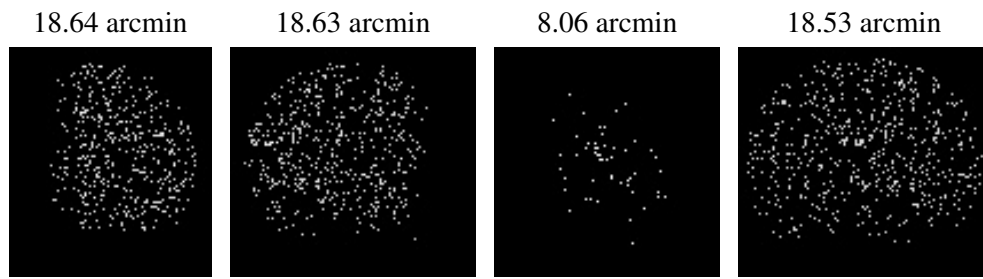
2.5.2 Slot 1



2.5.3 Slot 2



3 Point Sources



A Summary

A.1 Status

V&V Scientist	Jen Lauer
V&V Date (YYYY-MM-DD)	2007.06.12
V&V Edition	1
V&V Disposition and Status	OK
V&V Charge Time	4.915

A.2 Comments