

# V&V Reference Report

## L2 ASCDS Version : 7.6.9

Observation 2212 - L2 Version 001  
Chandra X-Ray Center

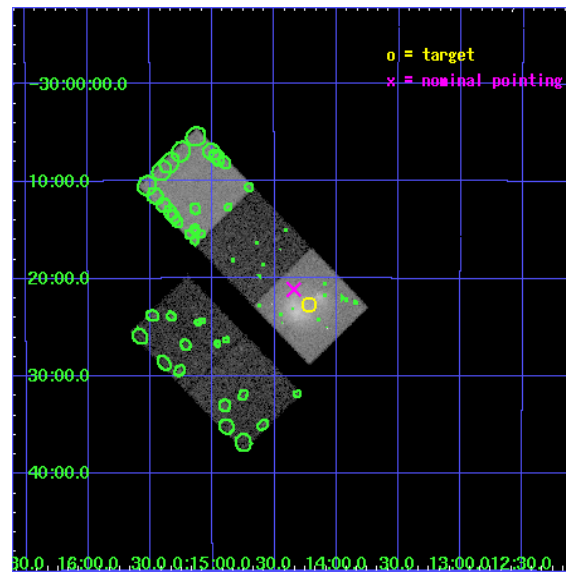
L2 Processing Date : Dec 30 2006

## Contents

<b>1</b>	<b>Front</b>	<b>2</b>
<b>2</b>	<b>OBI</b>	<b>3</b>
2.1	OBI . . . . .	3
2.1.1	Images . . . . .	3
2.1.2	Bias . . . . .	3
2.1.3	Parameters . . . . .	4
2.1.4	Events . . . . .	4
2.2	Compared Parameters . . . . .	5
2.3	Aspect . . . . .	6
2.4	Star Slots . . . . .	9
2.4.1	Slot 3 . . . . .	9
2.4.2	Slot 4 . . . . .	10
2.4.3	Slot 5 . . . . .	11
2.4.4	Slot 6 . . . . .	12
2.4.5	Slot 7 . . . . .	13
2.5	FID Slots . . . . .	14
2.5.1	Slot 0 . . . . .	14
2.5.2	Slot 1 . . . . .	15
2.5.3	Slot 2 . . . . .	16
<b>3</b>	<b>Point Sources</b>	<b>17</b>
<b>A</b>	<b>Summary</b>	<b>18</b>
A.1	Status . . . . .	18
A.2	Comments . . . . .	18

# 1 Front

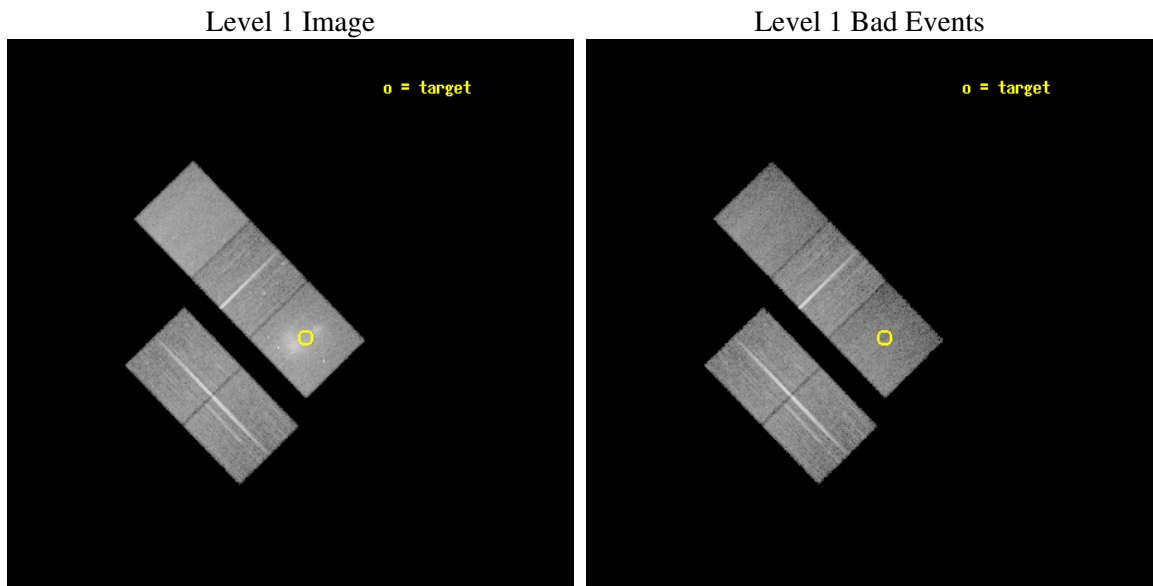
seq_num	800151
obs_id	2212
title	THE HYDRODYNAMICS OF MERGING CLUSTERS OF GALAXIES
observer	Dr. Laurence David
object	A2744
dtcycle	0
cycle	P
ra_targ	3.554167
dec_targ	-30.377778
ra_nom	3.5859183732338
dec_nom	-30.352218598592
roll_nom	45.800241447991
revision	3
ontime	25144.099951655
livetime	24815.573774969
ontime2	25144.099951655
ontime3	25140.95898141
ontime5	25144.099951655
ontime6	25144.099951655
ontime7	25144.099951655
l2events	197997



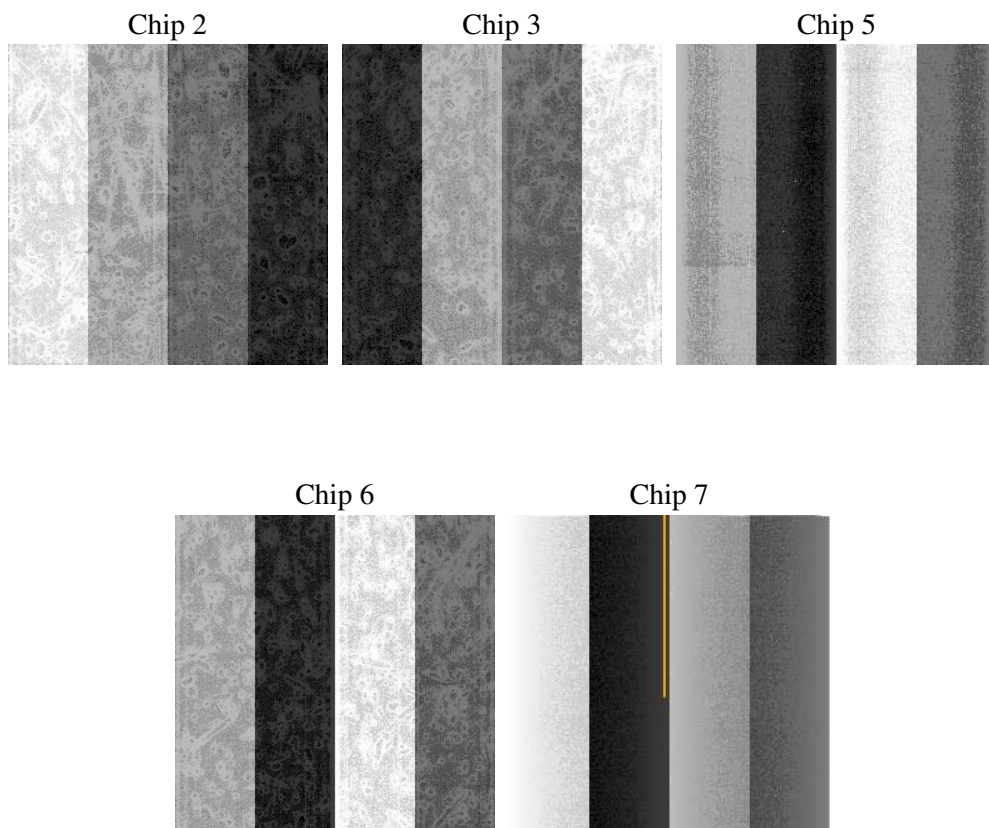
## 2 OBI

### 2.1 OBI

#### 2.1.1 Images



#### 2.1.2 Bias



### 2.1.3 Parameters

obi_num	0
ascdsver	7.6.9
caldsver	3.2.4
date	2006-12-31T00:24:15
revision	3

sched_exp_time	25000.000000
ontime	25749.954717621
ontime2	25749.954717621
ontime3	25746.813747376
ontime5	25749.954717621
ontime6	25749.954717621
ontime7	25749.954717621
l1events	750629

### 2.1.4 Events

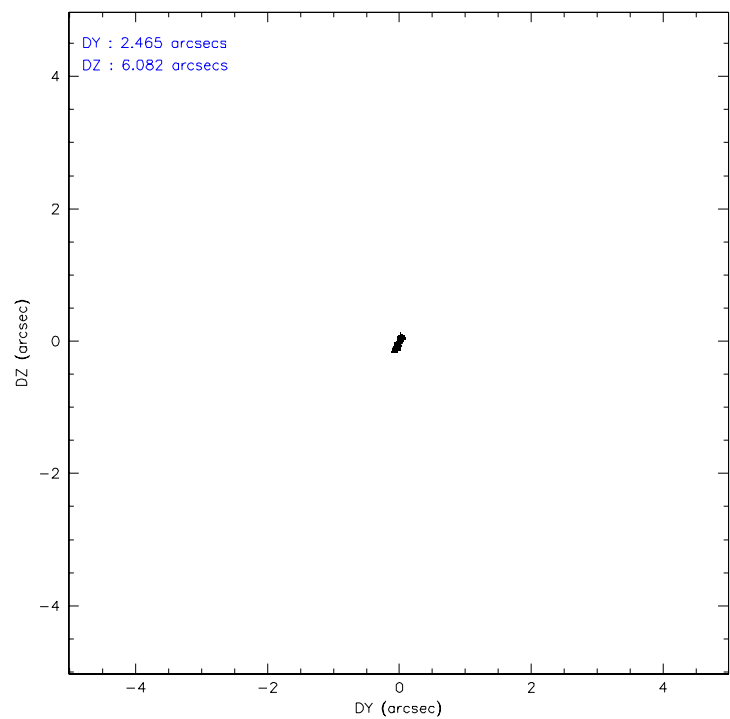
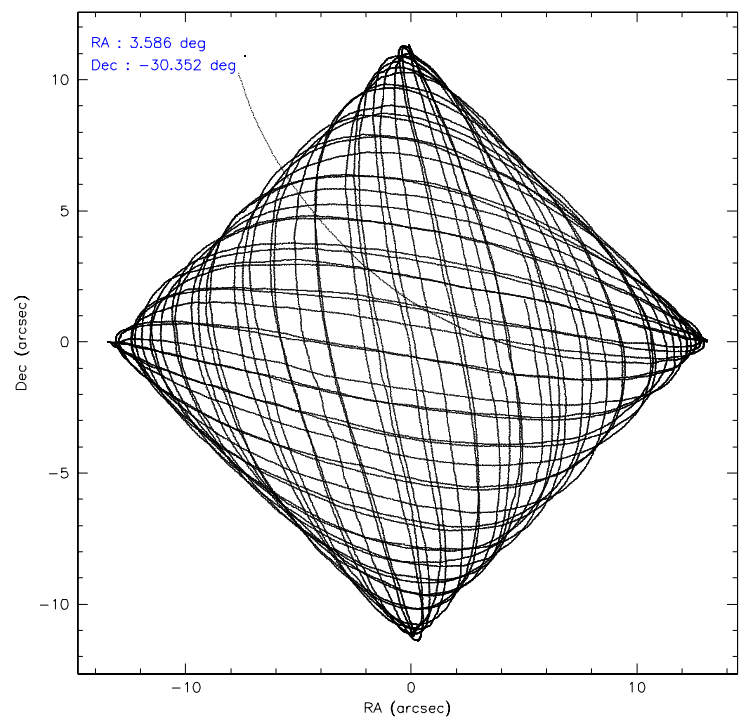
	ccd 2	ccd 3	ccd 5	ccd 6	ccd 7
level 1 events	138139	133414	165141	137005	176930
rejected events	125482	121508	89789	123210	82999
rejected %	90%	91%	54%	89%	46%

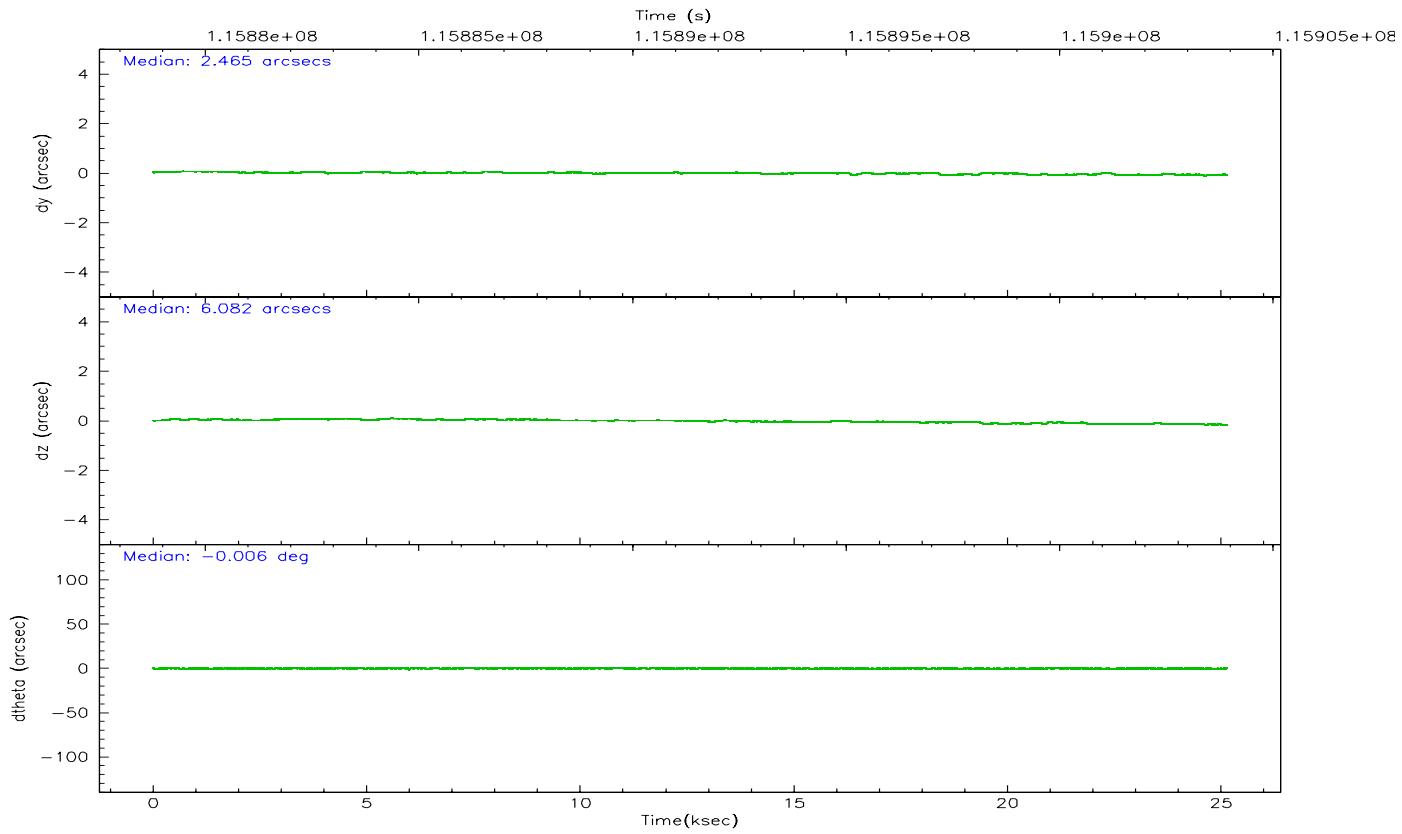
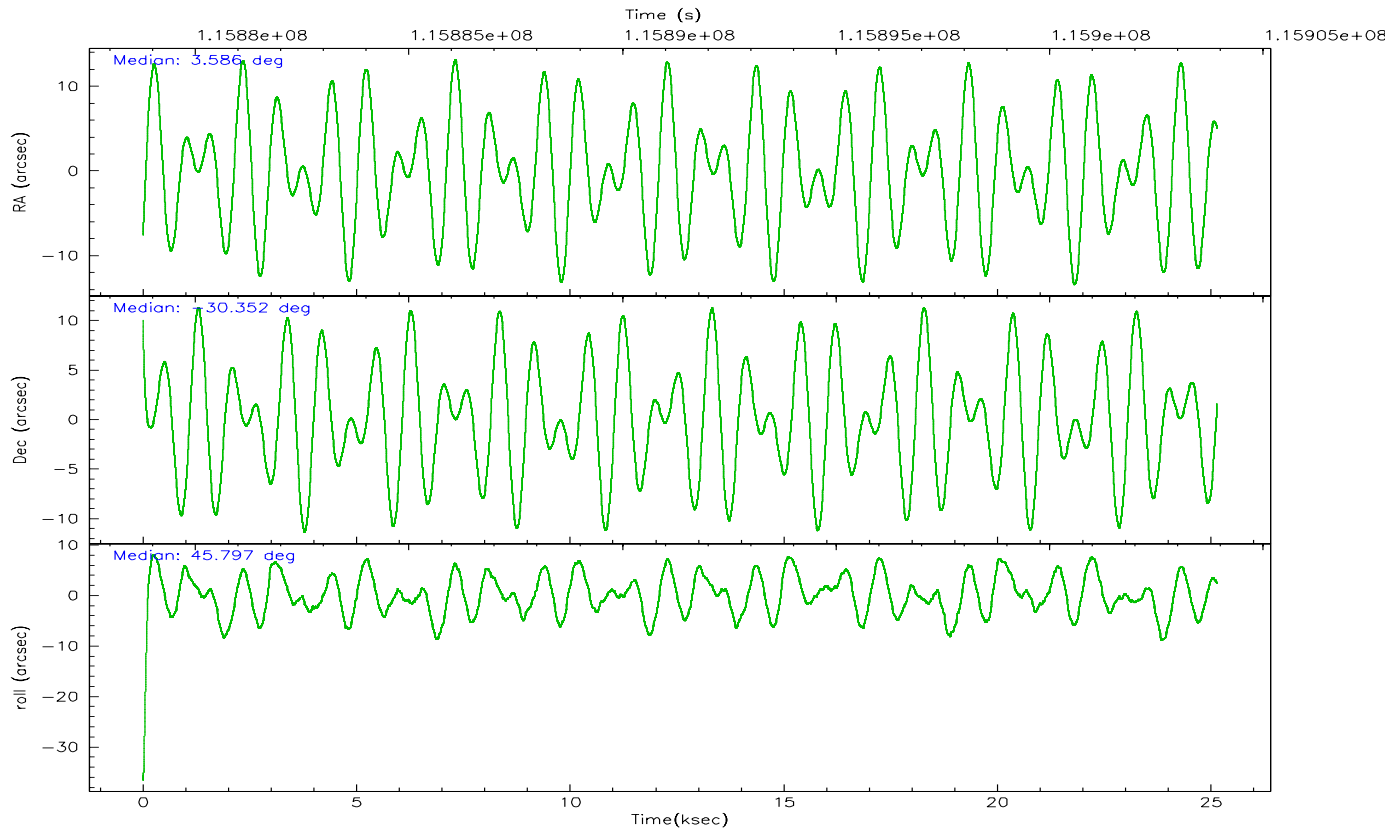
	ccd 2	ccd 3	ccd 5	ccd 6	ccd 7
grade 0 events	4794	4372	3329	5405	14912
	3%	3%	2%	3%	8%
grade 1 events	55	55	37	68	79
	0%	0%	0%	0%	0%
grade 2 events	2921	2472	24088	2936	24821
	2%	1%	14%	2%	14%
grade 3 events	1469	1520	2234	1545	7506
	1%	1%	1%	1%	4%
grade 4 events	1432	1408	2081	1532	7438
	1%	1%	1%	1%	4%
grade 5 events	3831	4544	9144	4951	11018
	2%	3%	5%	3%	6%
grade 6 events	2336	2418	45397	2762	40894
	1%	1%	27%	2%	23%
grade 7 events	121301	116625	78831	117806	70262
	87%	87%	47%	85%	39%

## 2.2 Compared Parameters

Parameter	Planned	Actual	Parameter	Planned	Actual
Instrument	ACIS	ACIS	Obspar format version number	6	6
Detector	ACIS-23567	ACIS-23567	Obspar file type	PREDICTED	ACTUAL
Grating	NONE	NONE	Obspar update status	NONE	UPDATED
Data mode	VFAINT	VFAINT	Number of optional ACIS chips dropped	0	0
Observation mode	POINTING	POINTING	On-chip summing requested	N	N
Pointing RA	3.578491	3.585918373233783	Subarray requested	NONE	NONE
Pointing Dec	-30.378723	-30.35221859859248	Alternating exposures requested	N	N
Pointing Roll	45.639875	45.80024144799125	Primary exposure time	0.000000	3.1
SIM focus pos (mm)	-0.684267	-0.6828225247311905			
SIM defocus (mm)	0	0.001444936568705701			
SIM translation stage pos (mm)	-190.132523	-190.1400660498719			
SIM translation stage offset (mm)	0	0.00754346686406393			
Observation start time	115878922.184000	115877636.82458			
Observation start date	2001-09-03T04:34:18	2001-09-03T04:13:56			
Observation end time	115903922.184000	115904406.75064			
Observation end date	2001-09-03T11:30:58	2001-09-03T11:40:06			
Read mode	TIMED	TIMED			

## 2.3 Aspect





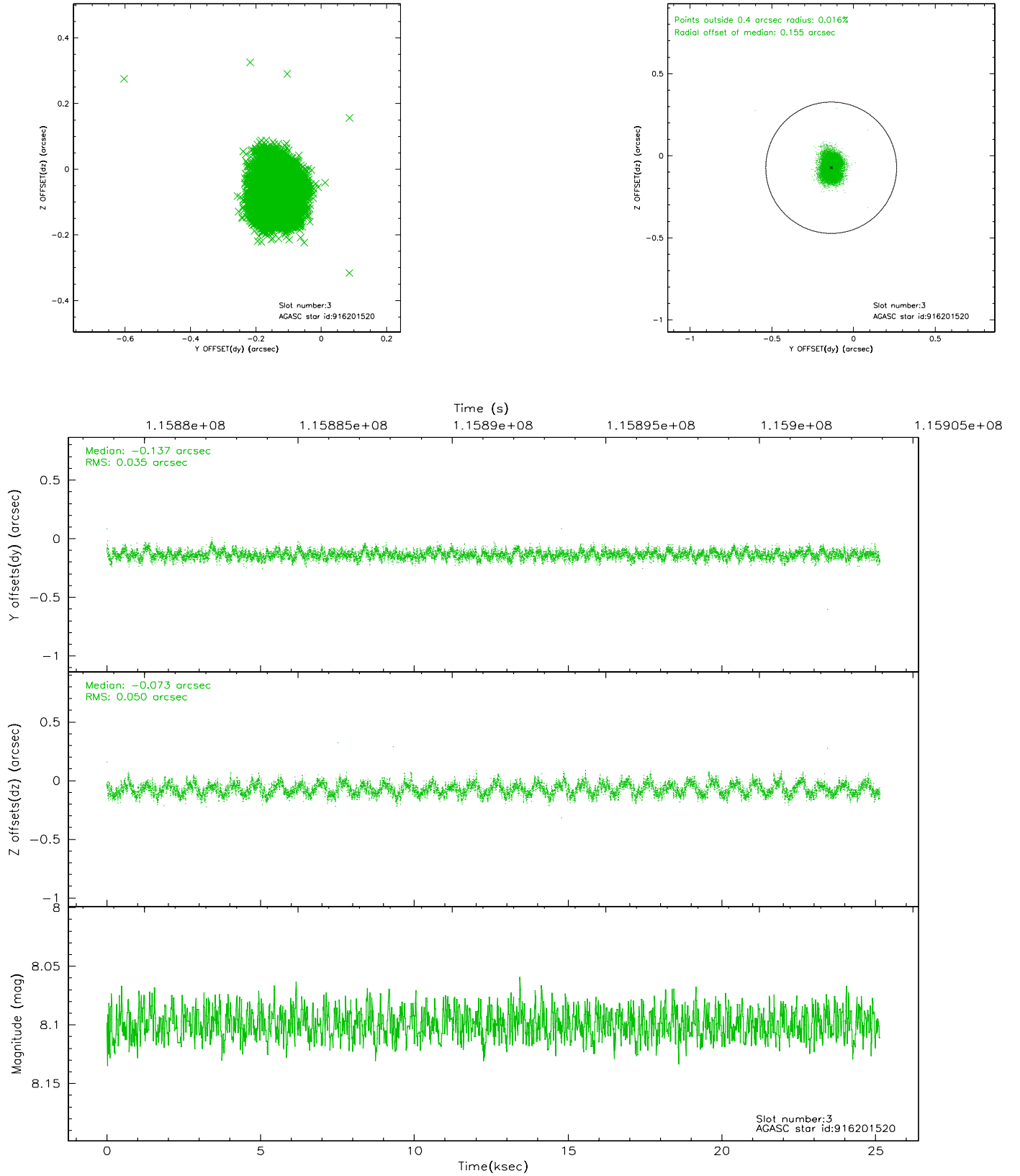
### Slot Statistics

slot	status	id	mag	n_pts	med_dy	med_dz	dr1	dr2	ra	dec	mean_y	mean_z
0	FID	ACIS-S-2	7.11	6134	-0.026	0.024	0.007	0.011	0.000000	0.000000	-755.07	-1727.20
1	FID	ACIS-S-4	7.20	6134	-0.063	0.006	0.005	0.008	0.000000	0.000000	2158.07	181.22
2	FID	ACIS-S-5	7.24	6134	0.058	-0.021	0.006	0.010	0.000000	0.000000	-1807.72	174.89
3	GUIDE	916201520	8.10	12267	-0.137	-0.073	0.065	0.101	3.245363	-30.057887	98.44	1549.93
4	GUIDE	916196792	8.51	12265	-0.122	0.047	0.081	0.122	4.170313	-30.434617	1136.70	-1455.83
5	GUIDE	916200592	8.67	12264	0.013	0.123	0.071	0.110	3.136714	-30.859834	-2195.27	-235.70
6	GUIDE	841356624	9.69	12251	0.028	-0.089	0.098	0.159	3.564472	-29.566469	2059.38	2077.30
7	GUIDE	916199936	9.58	12230	0.228	-0.022	0.207	0.289	3.810297	-30.935041	-931.84	-1911.04

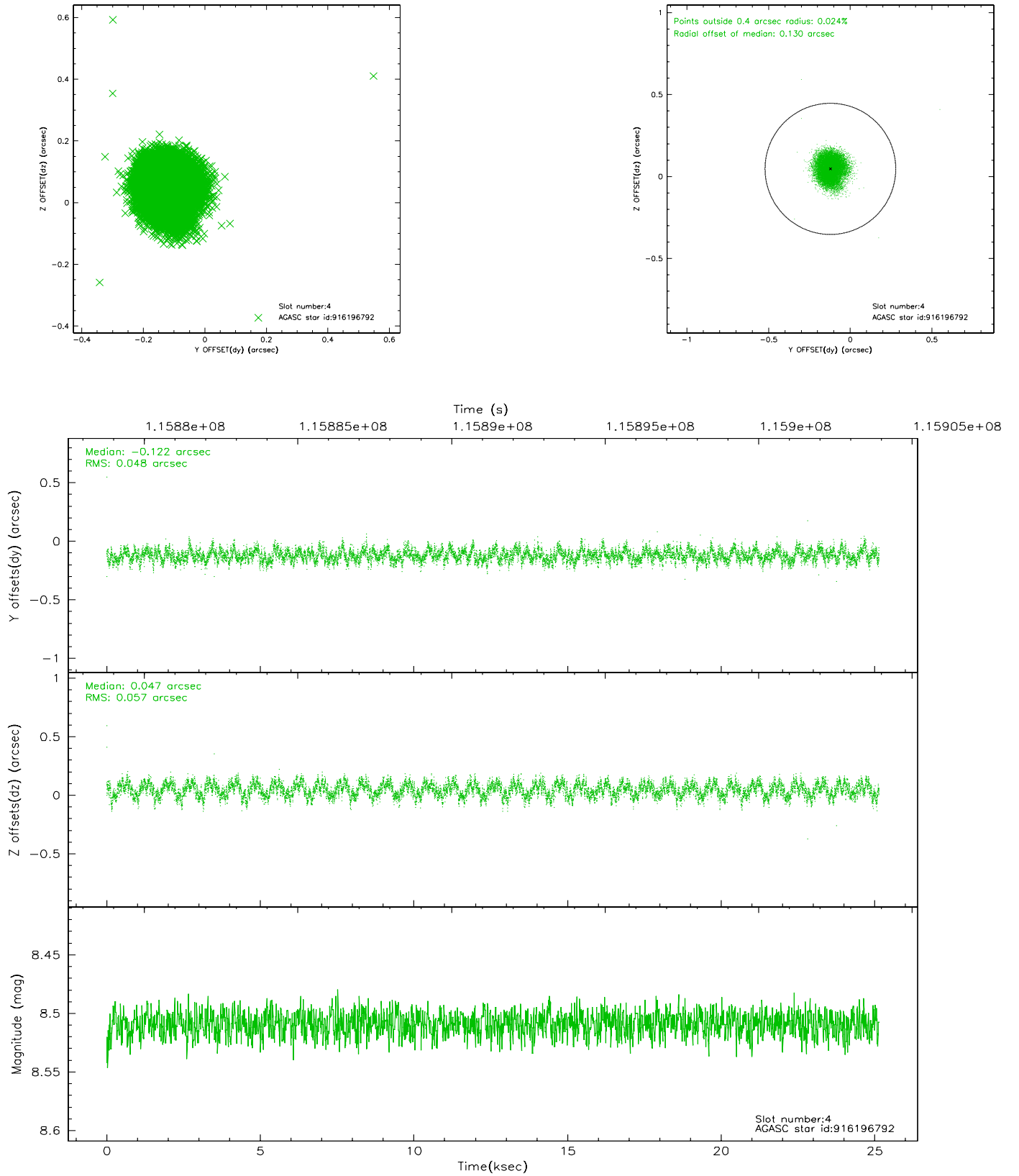


## 2.4 Star Slots

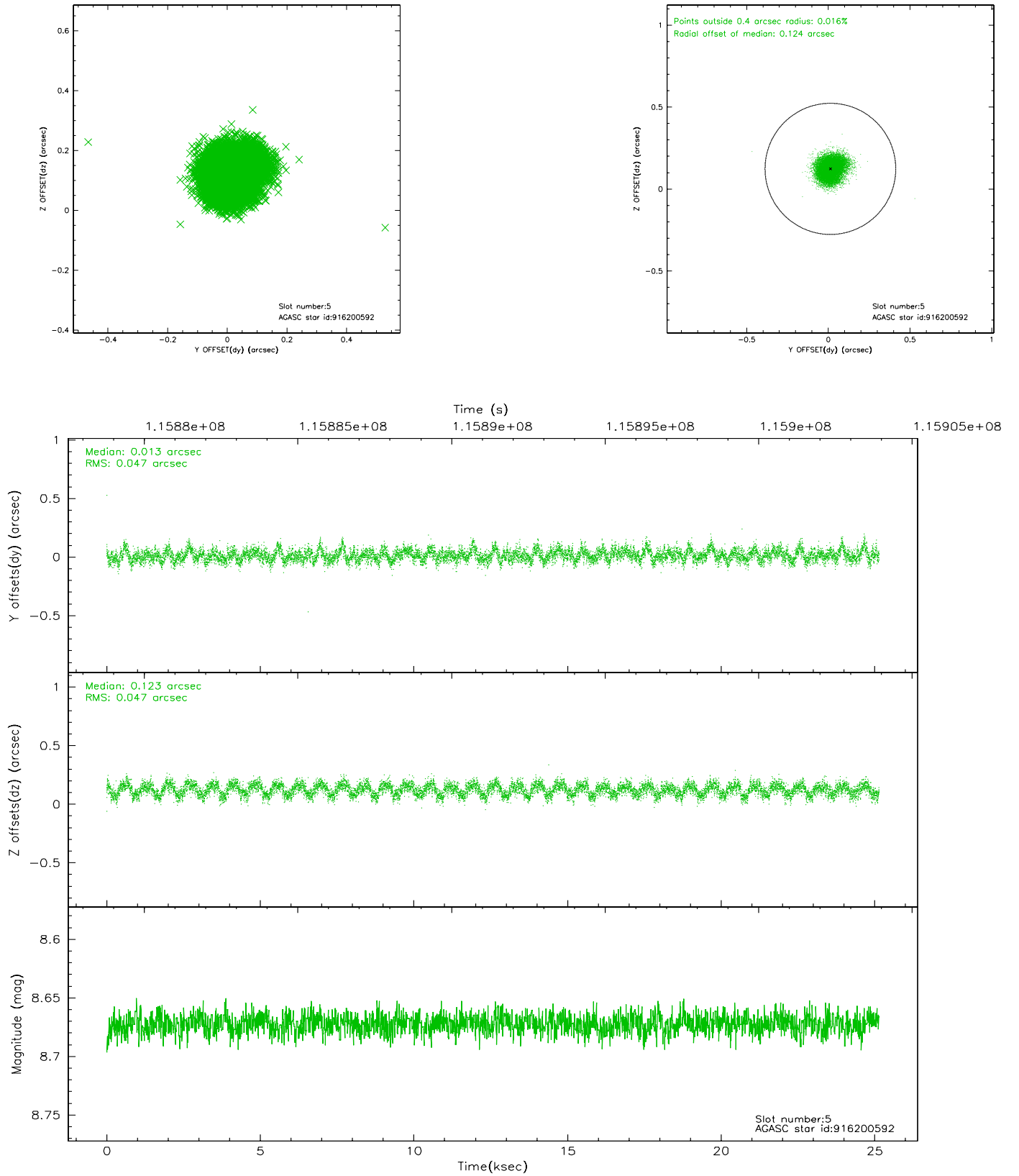
### 2.4.1 Slot 3



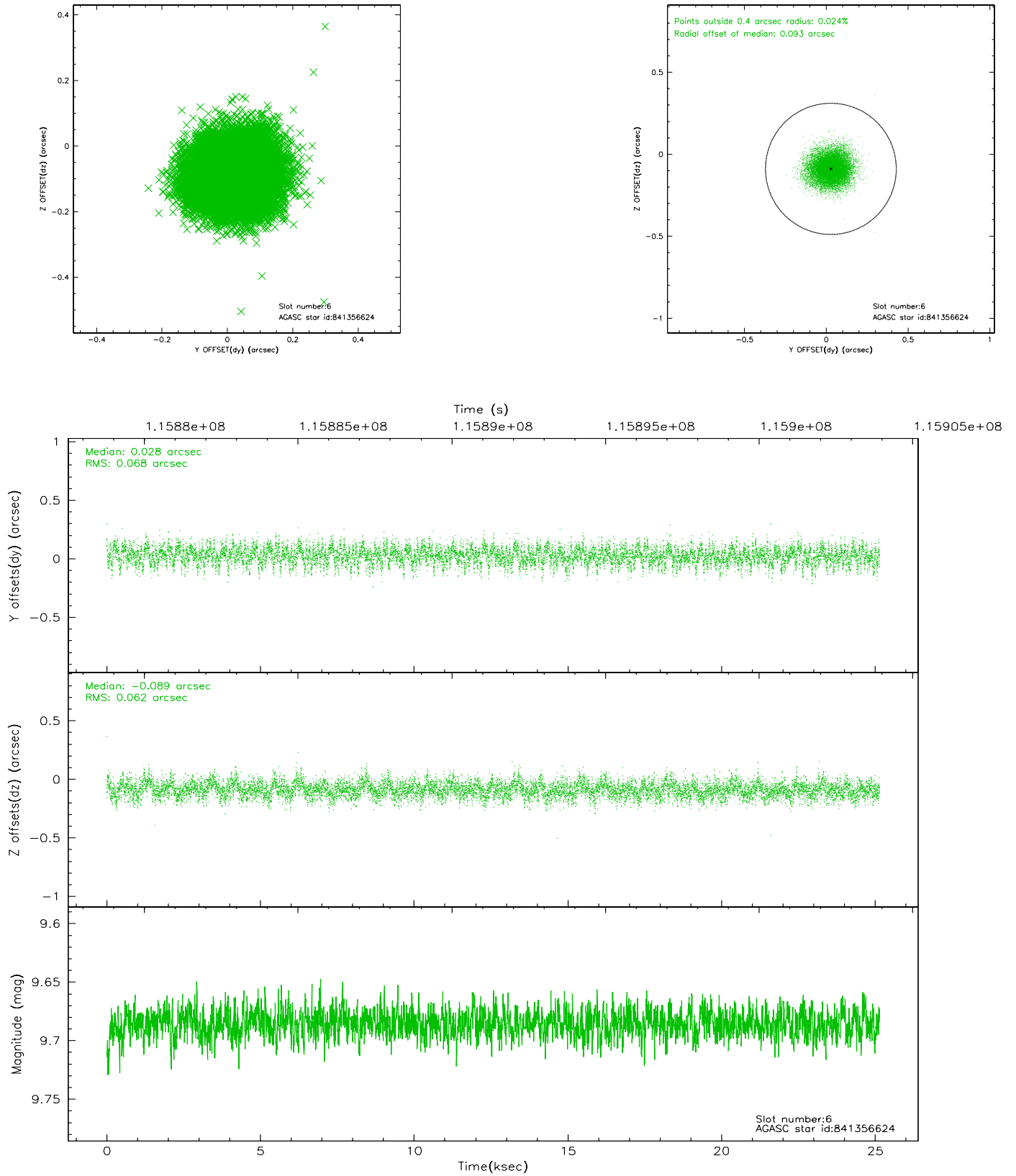
## 2.4.2 Slot 4



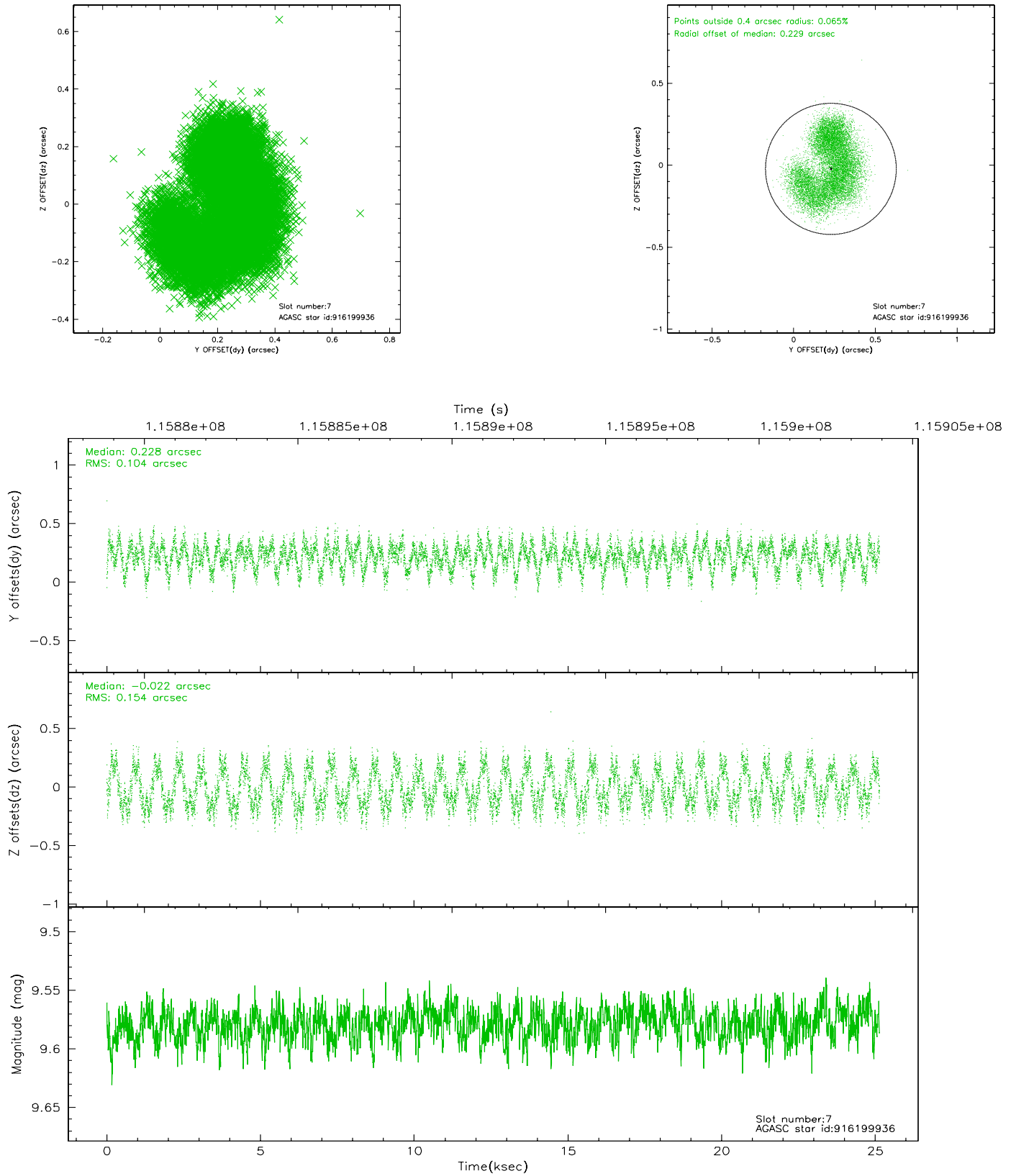
### 2.4.3 Slot 5



## 2.4.4 Slot 6

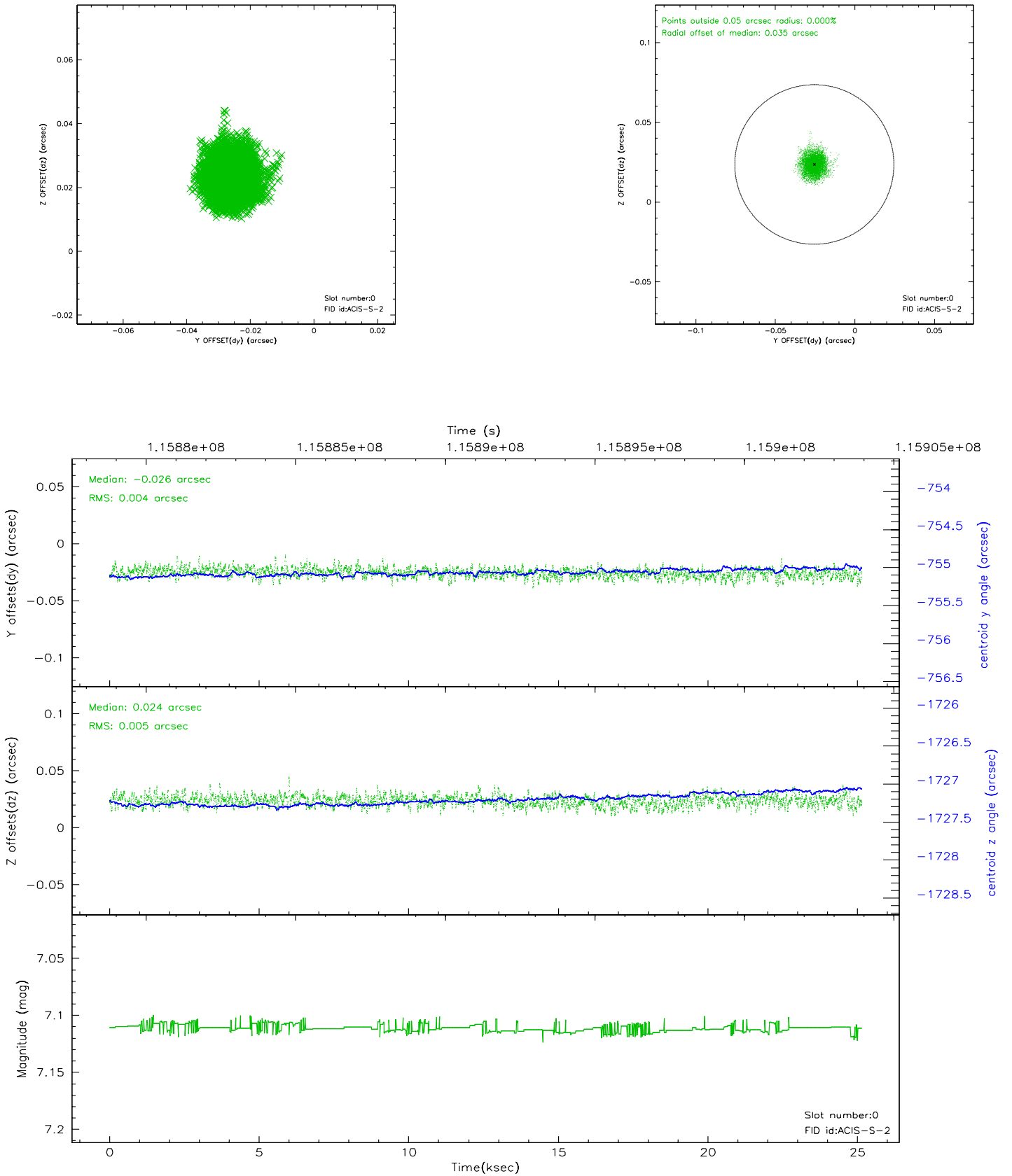


## 2.4.5 Slot 7

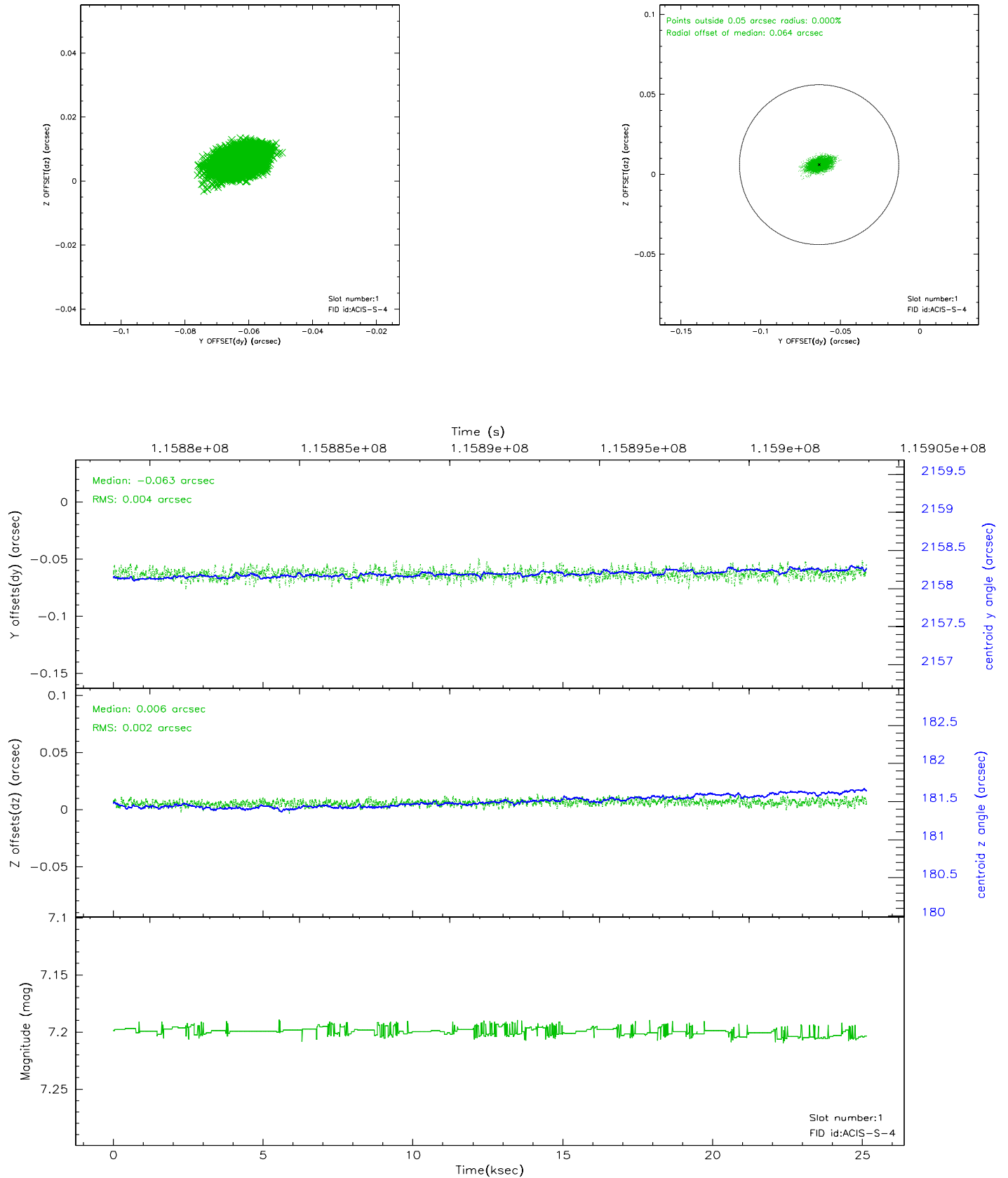


## 2.5 FID Slots

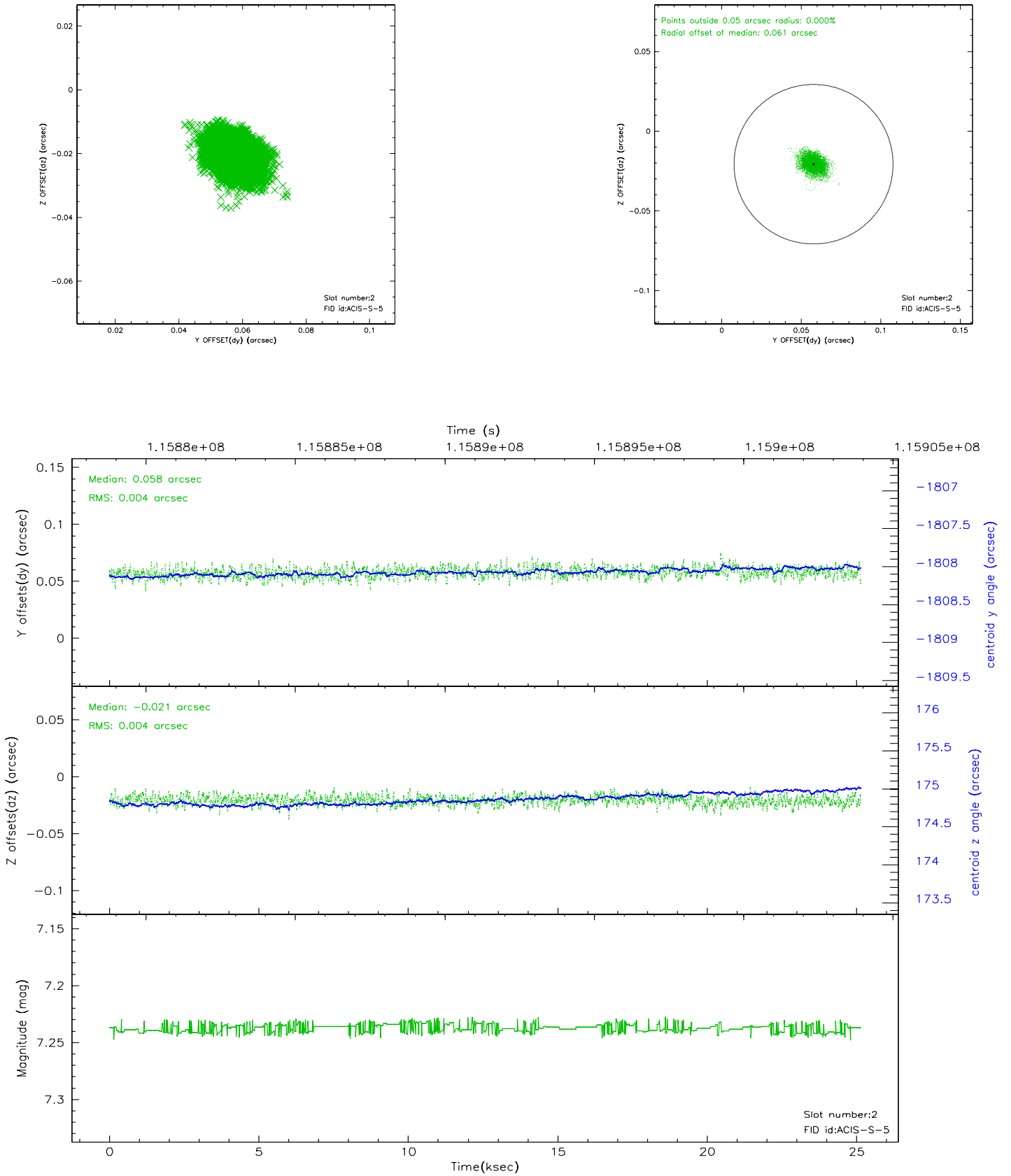
### 2.5.1 Slot 0



## 2.5.2 Slot 1

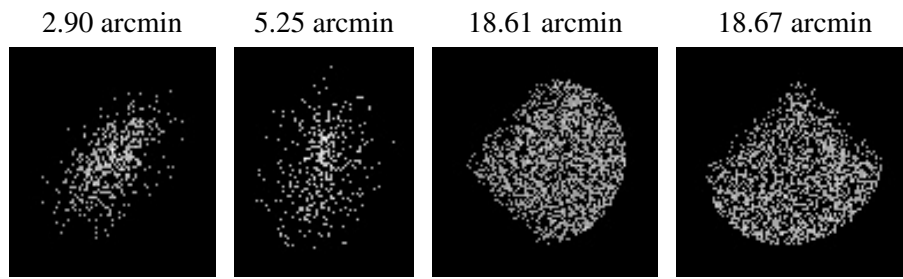


### 2.5.3 Slot 2





### 3 Point Sources



## A Summary

### A.1 Status

V&V Scientist	Beth Sundheim
V&V Date (YYYY-MM-DD)	2007.01.03
V&V Edition	1
V&V Disposition and Status	OK
V&V Charge Time	25.144

### A.2 Comments