

V&V Reference Report

L2 ASCDS Version : 8.4.5

Observation 2182 - L2 Version 4
Chandra X-Ray Center

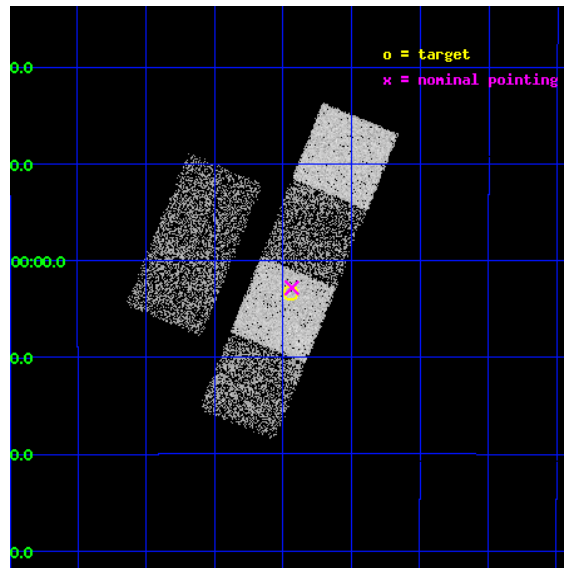
L2 Processing Date : Sep 21 2012

Contents

1	Front	2
2	OBI	3
2.1	OBI	3
2.1.1	Images	3
2.1.2	Bias	3
2.1.3	Parameters	4
2.1.4	Events	4
2.2	Compared Parameters	5
2.3	Aspect	6
2.4	Star Slots	9
2.4.1	Slot 3	9
2.4.2	Slot 4	10
2.4.3	Slot 5	11
2.4.4	Slot 6	12
2.4.5	Slot 7	13
2.5	FID Slots	14
2.5.1	Slot 0	14
2.5.2	Slot 1	15
2.5.3	Slot 2	16
A	Summary	17
A.1	Status	17
A.2	Comments	17

1 Front

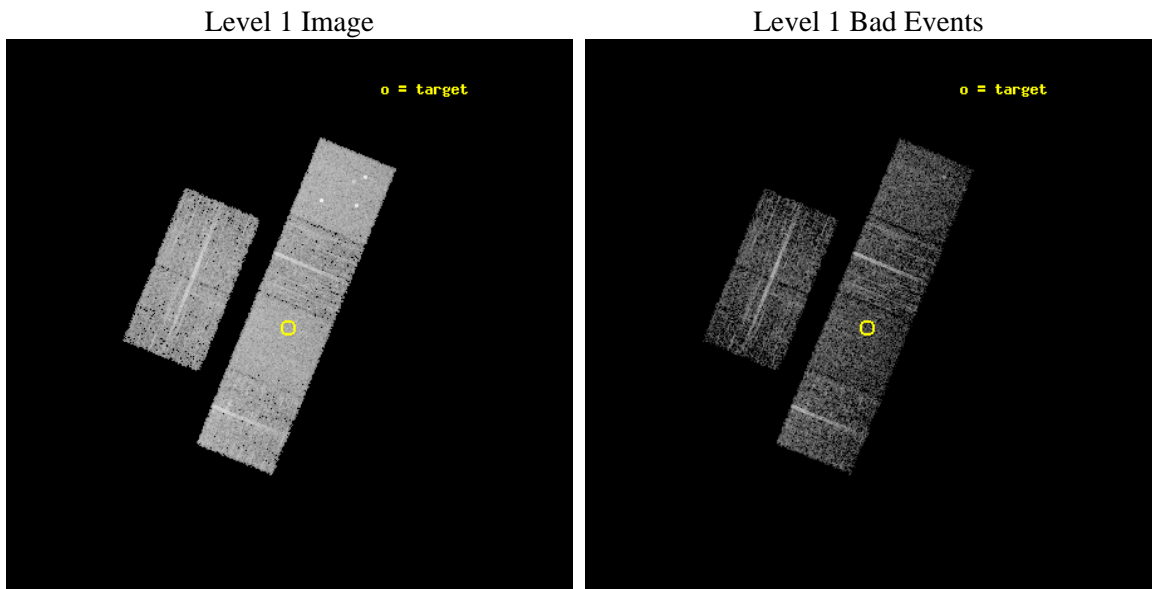
seq_num	700372	Sequence number
obs_id	2182	Observation id
title	SURVEY OF RADIO QUIET Z>4 QUASARS	Proposal title
observer	Dr. Jill Bechtold	Principal investigator
object	BRI 0401-1711	Source name
dtcycle	0	
cycle	P	events from which exps? Prim/Second/Both
ra_targ	60.985833	Observer's specified target RA [deg]
dec_targ	-17.056667	Observer's specified target Dec [deg]
ra_nom	60.983735255143	Nominal RA [deg]
dec_nom	-17.047166859502	Nominal Dec [deg]
roll_nom	112.1948051896	Nominal Roll [deg]
revision	4	Processing version of data
ontime	3888.0000036061	Sum of GTIs [s]
livetime	3838.7678064879	Livetime [s]
ontime2	3888.0000036061	Sum of GTIs [s]
ontime3	3888.0000036061	Sum of GTIs [s]
ontime5	3888.0000036061	Sum of GTIs [s]
ontime6	3888.0000036061	Sum of GTIs [s]
ontime7	3888.0000036061	Sum of GTIs [s]
ontime8	3888.0000036061	Sum of GTIs [s]
l2events	39932	Number of level 2 events



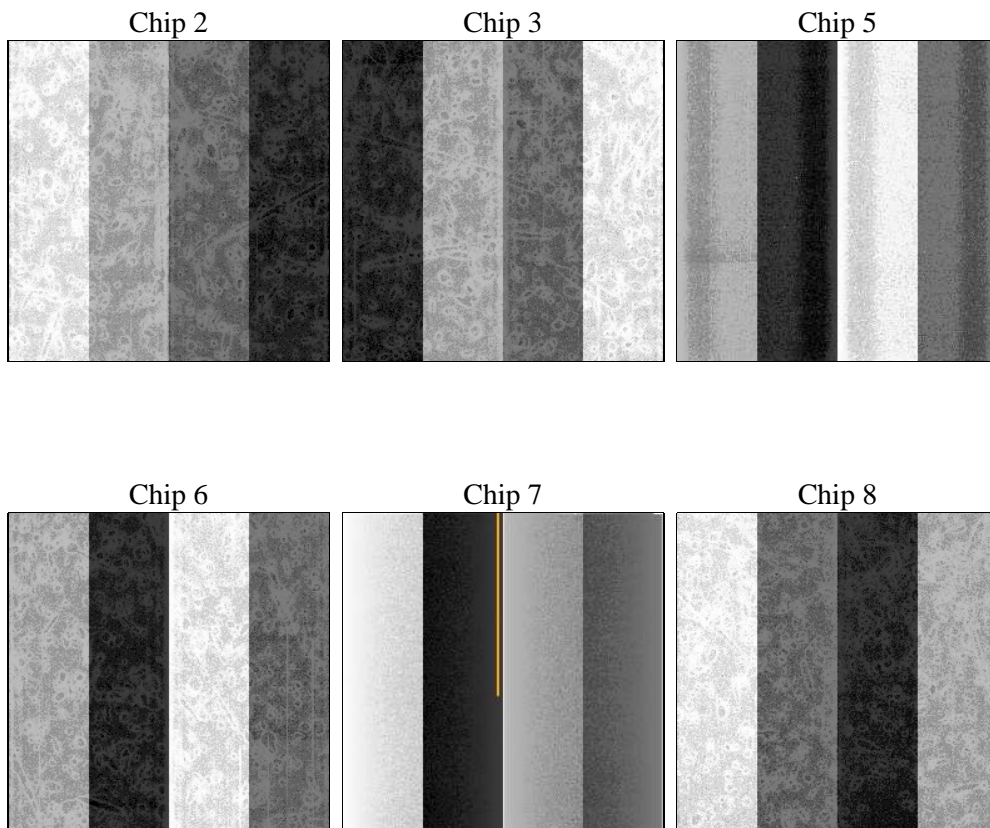
2 OBI

2.1 OBI

2.1.1 Images



2.1.2 Bias



2.1.3 Parameters

obi_num	0	Obi number	sched_exp_time	4000.000000	[s] Scheduled observation exposure time
ascdsver	8.4.5	Processing system revision	ontime	3888.0000036061	Sum of GTIs [s]
caldsver	4.5.1.1	 	ontime2	3888.0000036061	Sum of GTIs [s]
date	2012-09-21T09:52:51	Date and time of file creation	ontime3	3888.0000036061	Sum of GTIs [s]
revision	4	Processing version of data	ontime5	3888.0000036061	Sum of GTIs [s]
			ontime6	3888.0000036061	Sum of GTIs [s]
			ontime7	3888.0000036061	Sum of GTIs [s]
			ontime8	3888.0000036061	Sum of GTIs [s]
			l1events	177235	Number of level 1 events

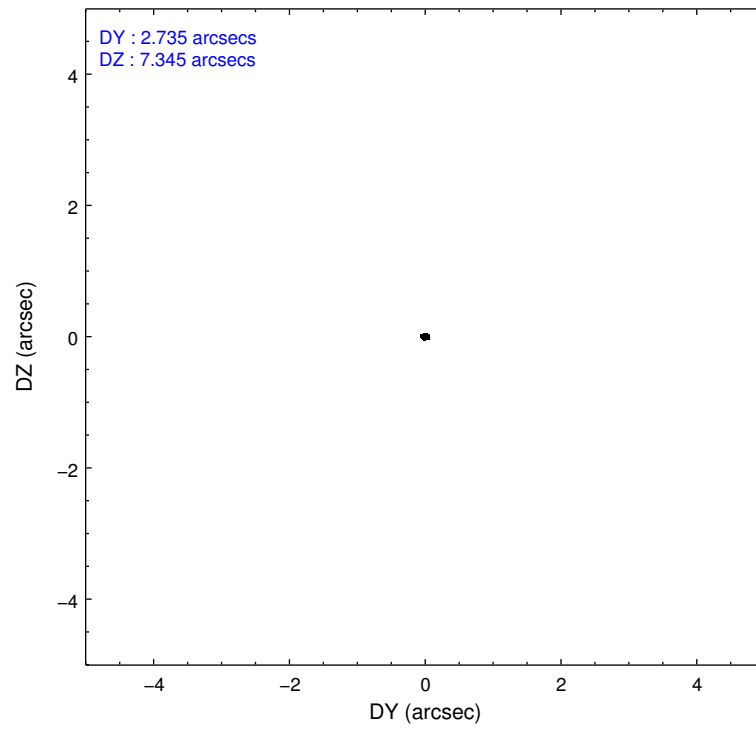
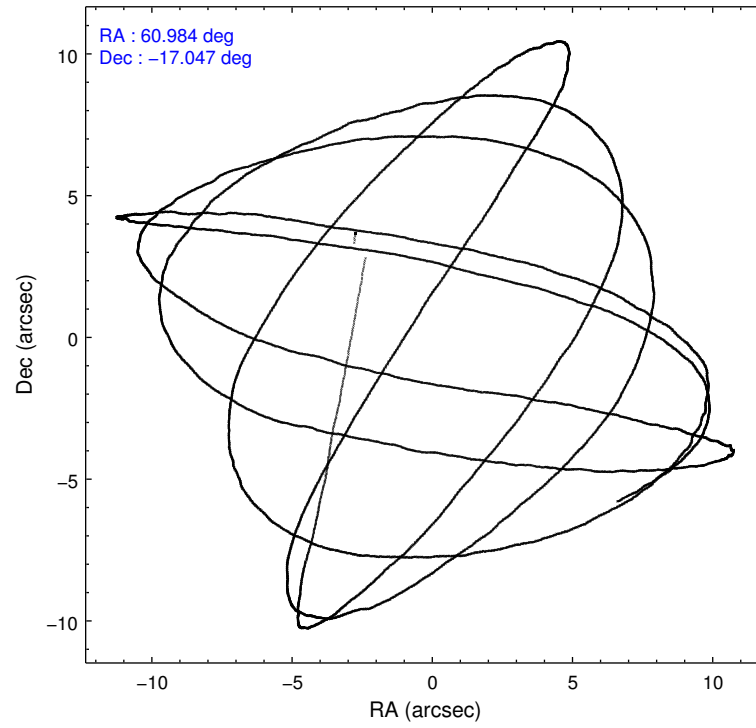
2.1.4 Events

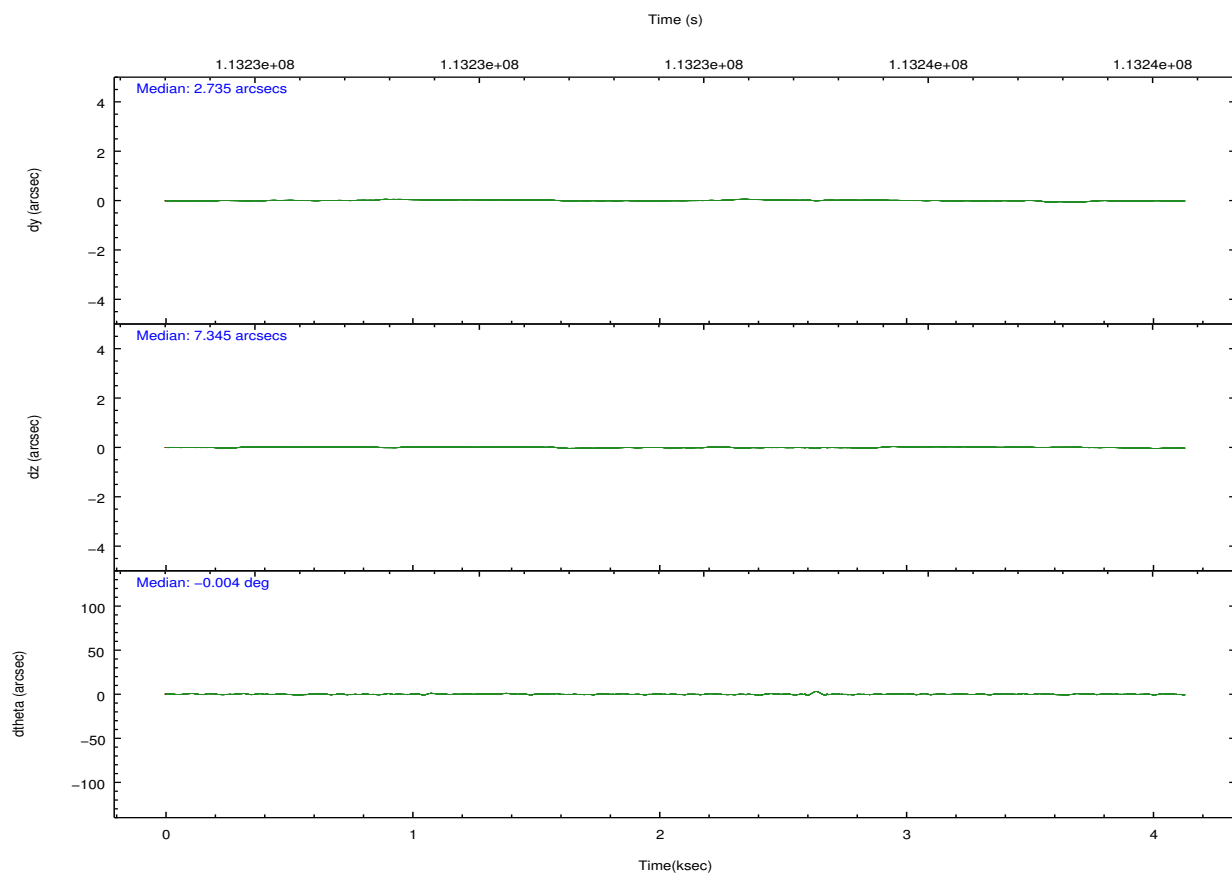
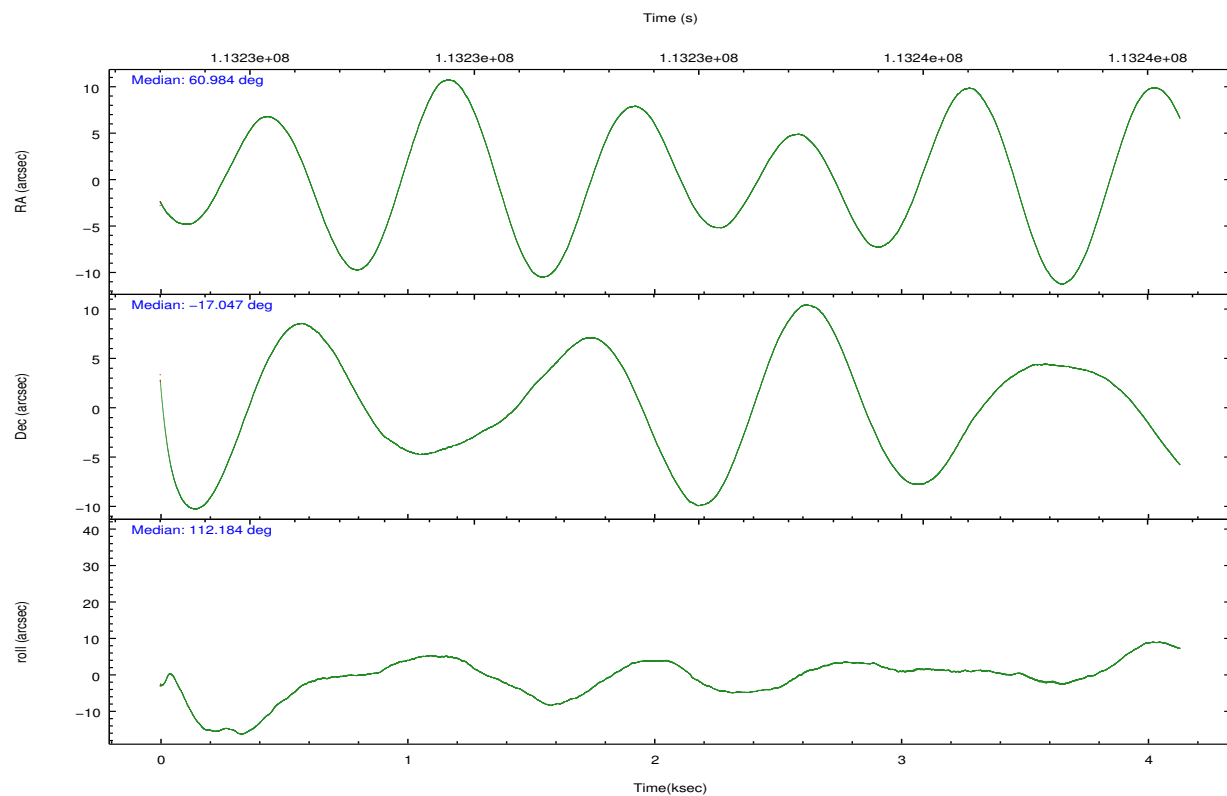
	ccd 2	ccd 3	ccd 5	ccd 6	ccd 7	ccd 8		ccd 2	ccd 3	ccd 5	ccd 6	ccd 7	ccd 8
level 1 events	25809	24011	36861	26065	32868	31621	grade 0 events	1216	1272	2938	1229	1560	2254
rejected events	22952	21155	19274	23110	18679	25131		4%	5%	7%	4%	4%	7%
rejected %	88%	88%	52%	88%	56%	79%	grade 1 events	16	16	100	11	37	14
								0%	0%	0%	0%	0%	0%
							grade 2 events	565	542	4691	591	2830	1353
								2%	2%	12%	2%	8%	4%
							grade 3 events	254	269	729	271	1294	727
								0%	1%	1%	1%	3%	2%
							grade 4 events	278	251	772	292	1351	668
								1%	1%	2%	1%	4%	2%
							grade 5 events	903	983	2779	1064	3099	1356
								3%	4%	7%	4%	9%	4%
							grade 6 events	551	529	8491	583	7185	1497
								2%	2%	23%	2%	21%	4%
							grade 7 events	22026	20149	16361	22024	15512	23752
								85%	83%	44%	84%	47%	75%

2.2 Compared Parameters

Parameter	Planned	Actual	Parameter	Planned	Actual
Instrument	ACIS	ACIS	Obspar format version number	7	7
Detector	ACIS-235678	ACIS-235678	Obspar file type	PREDICTED	ACTUAL
Grating	NONE	NONE	Obspar update status	NONE	UPDATED
Data mode	FAINT	FAINT	Number of optional ACIS chips dropped	0	0
Observation mode	POINTING	POINTING	On-chip summing requested	N	N
[deg] Pointing RA	61.006458	60.98373525514344	Subarray requested	NONE	NONE
[deg] Pointing Dec	-17.063609	-17.0471668595024	Alternating exposures requested	N	N
[deg] Pointing Roll	112.044854	112.1948051895996	[s] Primary exposure time	0.000000	3.2
[mm] SIM focus pos	-0.684267	-0.6828225247311905			
[mm] SIM defocus	0	0.001444936568705701			
[mm] SIM translation stage pos	-190.132523	-190.1400660498719			
[mm] SIM translation stage offset	0	0.00754346686406393			
[s] Observation start time (MET)	113231936.184000	113230873.00771			
Observation start date	2001-08-03T13:17:52	2001-08-03T13:01:13			
[s] Observation end time (MET)	113235936.184000	113236544.33293			
Observation end date	2001-08-03T14:24:32	2001-08-03T14:35:44			
Read mode	TIMED	TIMED			

2.3 Aspect



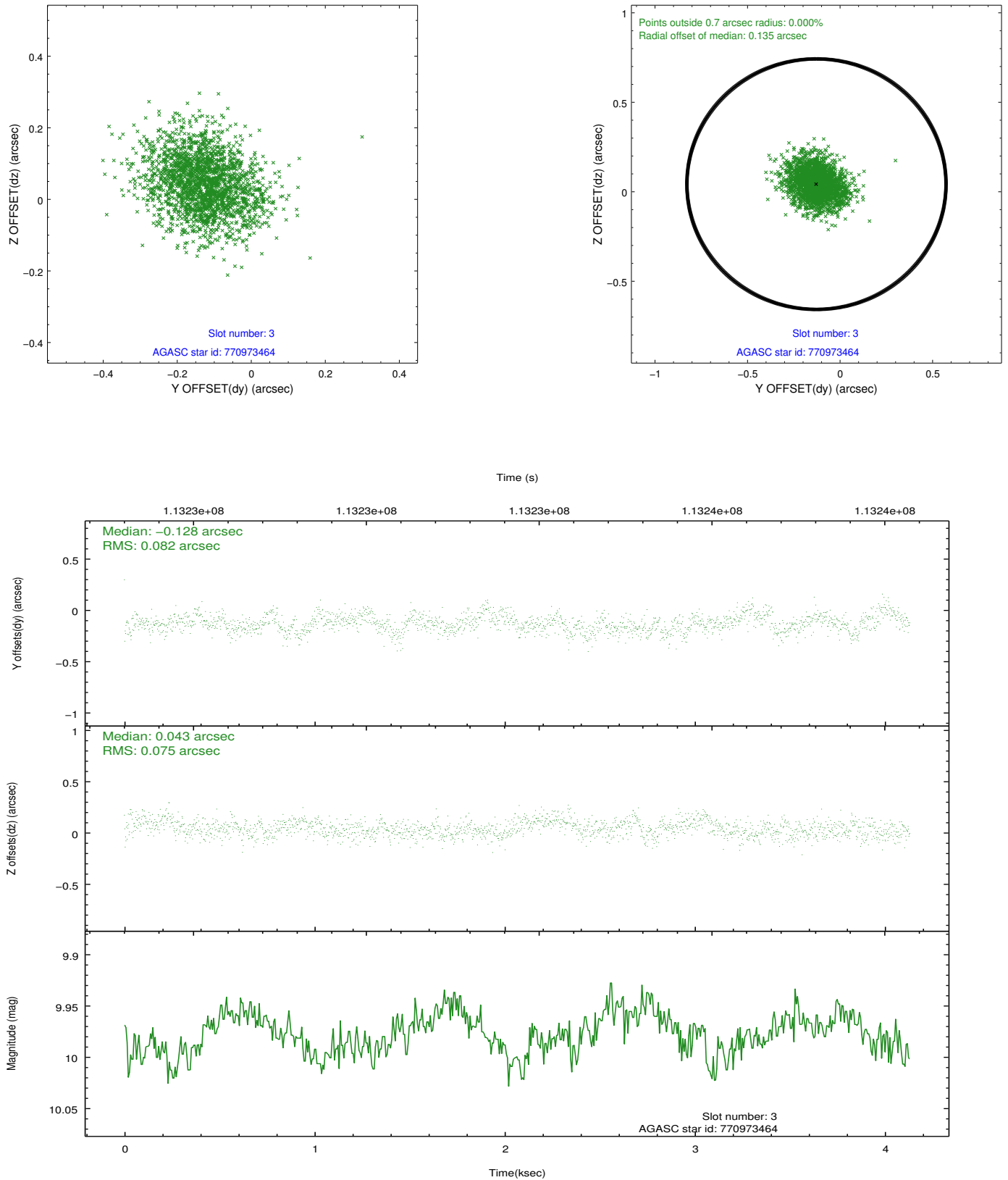


Slot Statistics

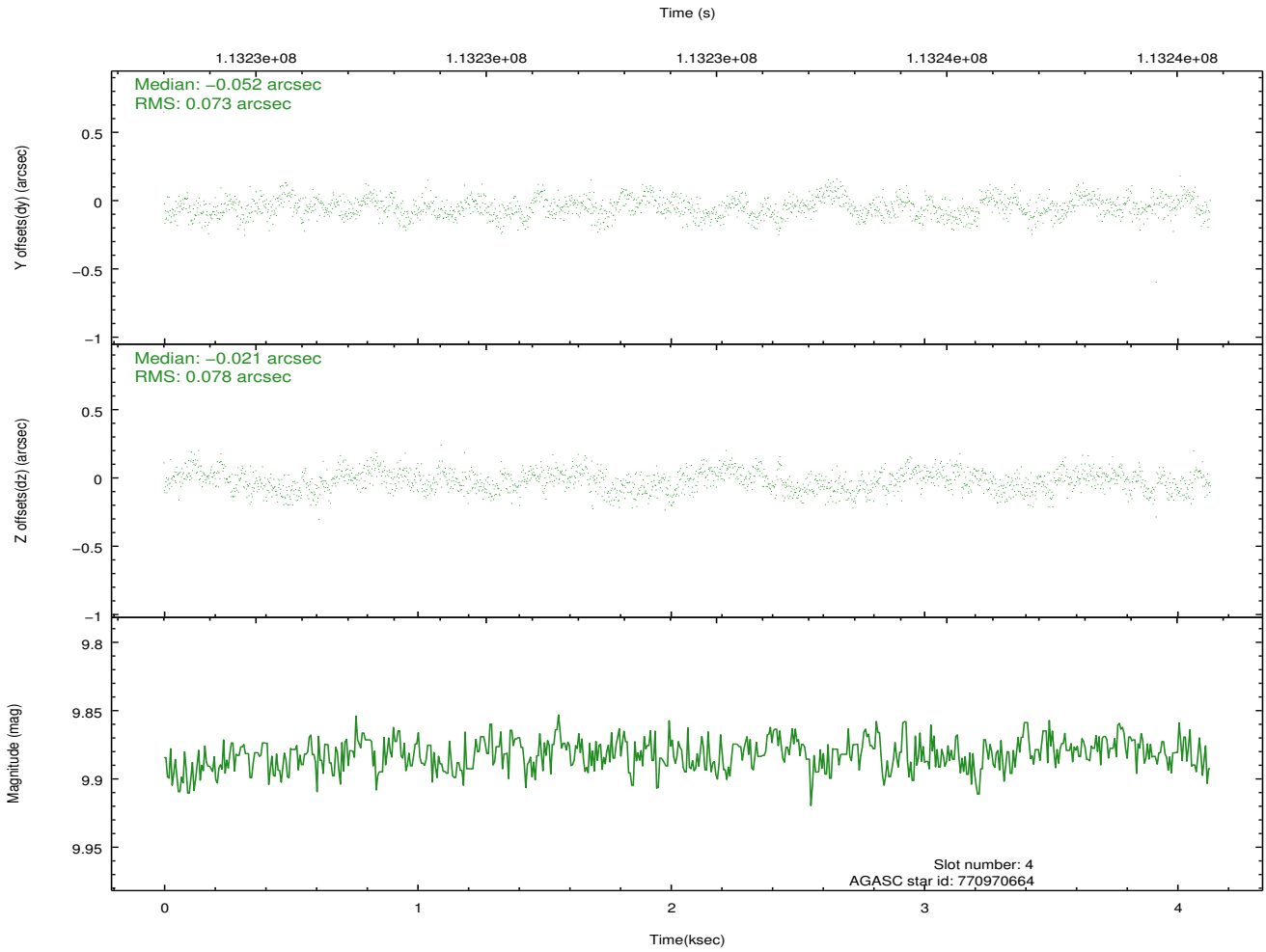
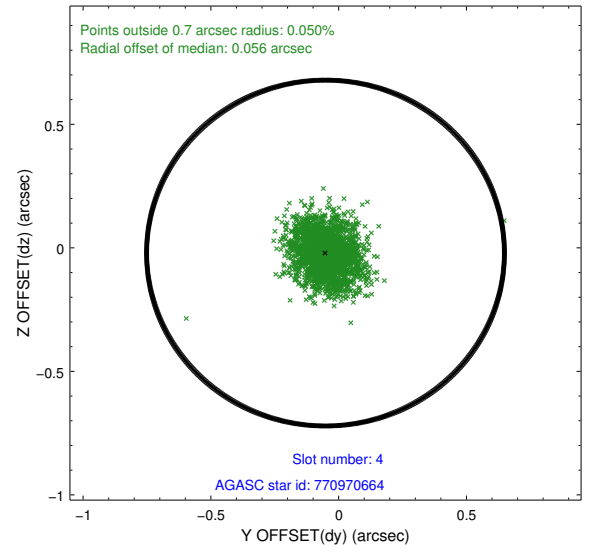
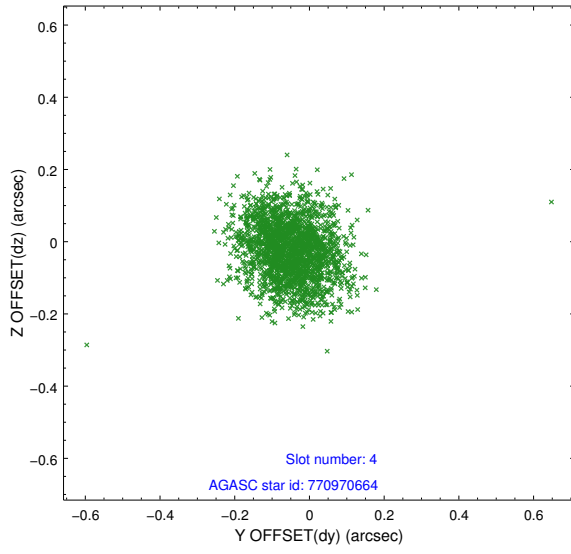
slot	status	id	mag	n_pts	med_dy	med_dz	dr1	dr2	ra	dec	mean_y	mean_z
0	FID	ACIS-S-2	7.11	1008	-0.005	-0.007	0.007	0.011	0.000000	0.000000	-755.38	-1728.53
1	FID	ACIS-S-4	7.19	1008	-0.043	0.004	0.005	0.010	0.000000	0.000000	2157.18	178.41
2	FID	ACIS-S-5	7.24	1008	0.017	0.011	0.007	0.011	0.000000	0.000000	-1806.26	173.81
3	GUIDE	770973464	9.98	2015	-0.128	0.043	0.117	0.192	61.200465	-16.847062	471.85	-911.13
4	GUIDE	770970664	9.88	2015	-0.052	-0.021	0.113	0.181	61.298394	-16.835022	385.35	-1240.59
5	GUIDE	770971360	6.06	2016	-0.306	0.105	0.089	0.137	61.036289	-16.588727	1546.25	-736.59
6	GUIDE	770965552	10.26	2013	0.336	0.100	0.284	0.384	61.332694	-17.212623	-917.49	-837.83
7	GUIDE	771368272	10.12	2015	0.153	-0.210	0.164	0.261	60.621108	-17.695027	-1612.46	2078.56

2.4 Star Slots

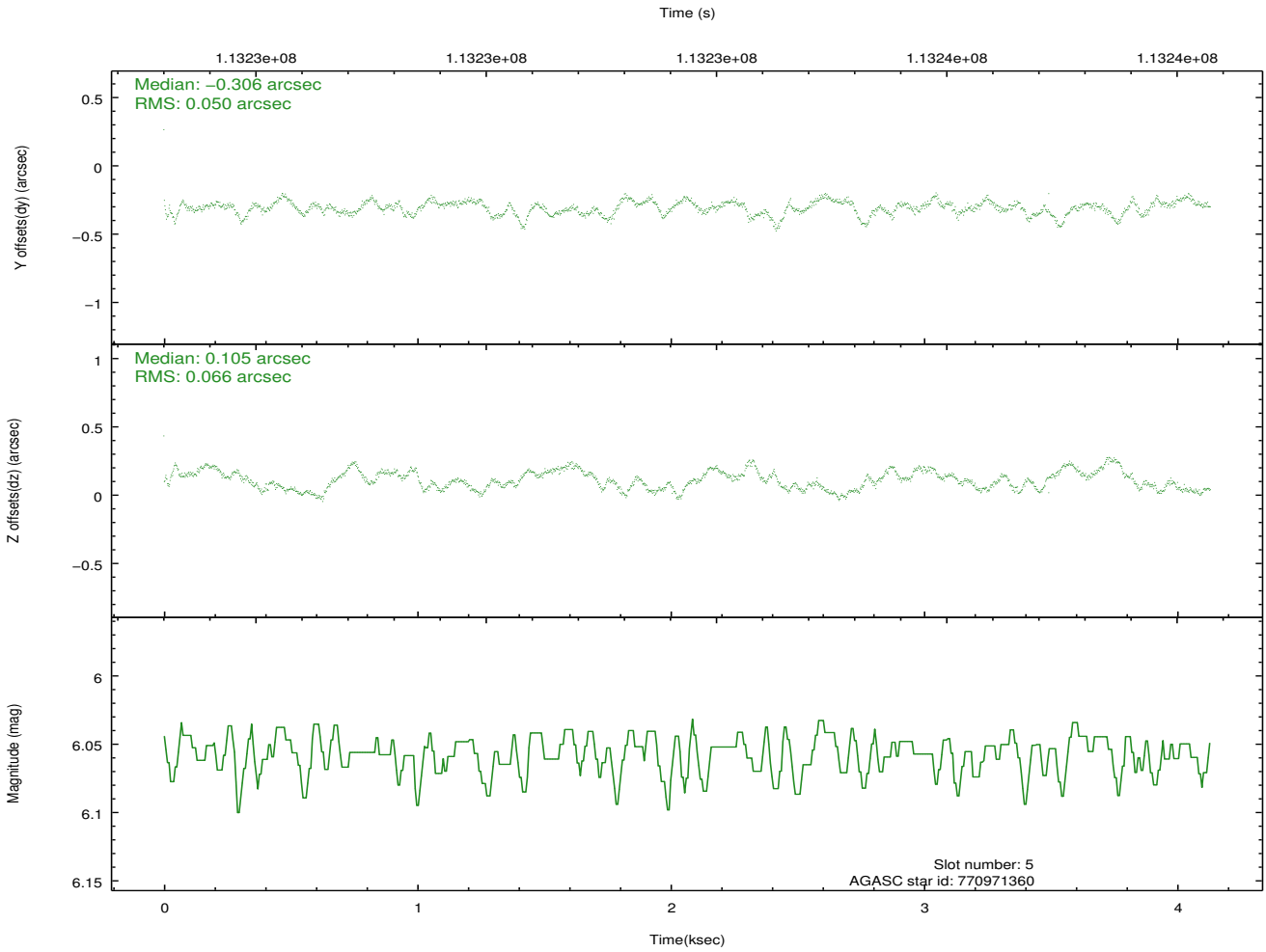
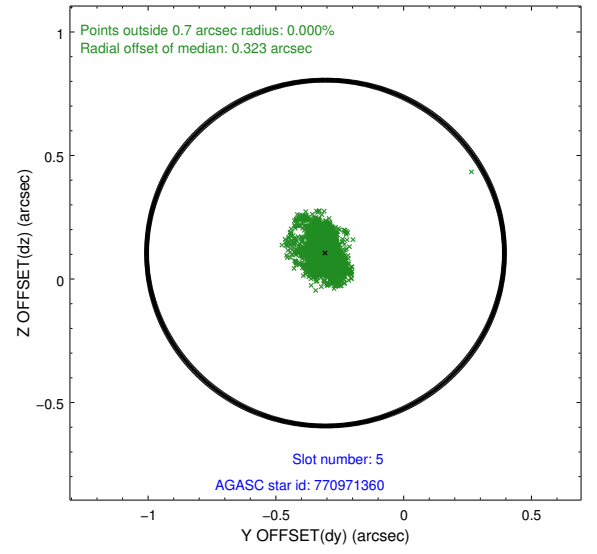
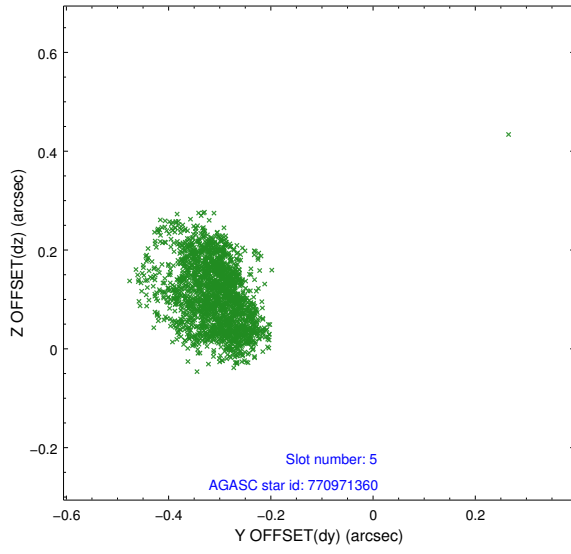
2.4.1 Slot 3



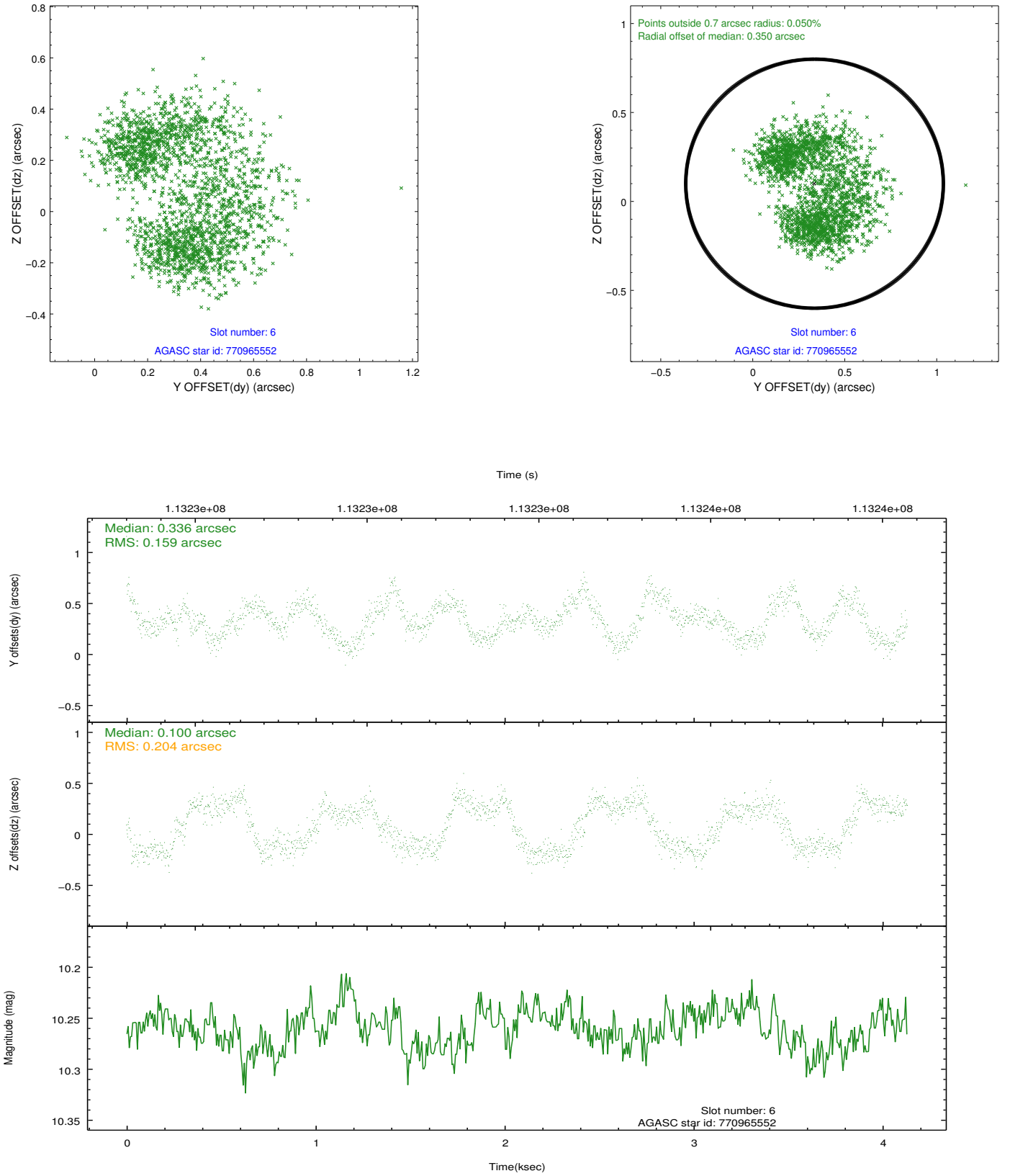
2.4.2 Slot 4



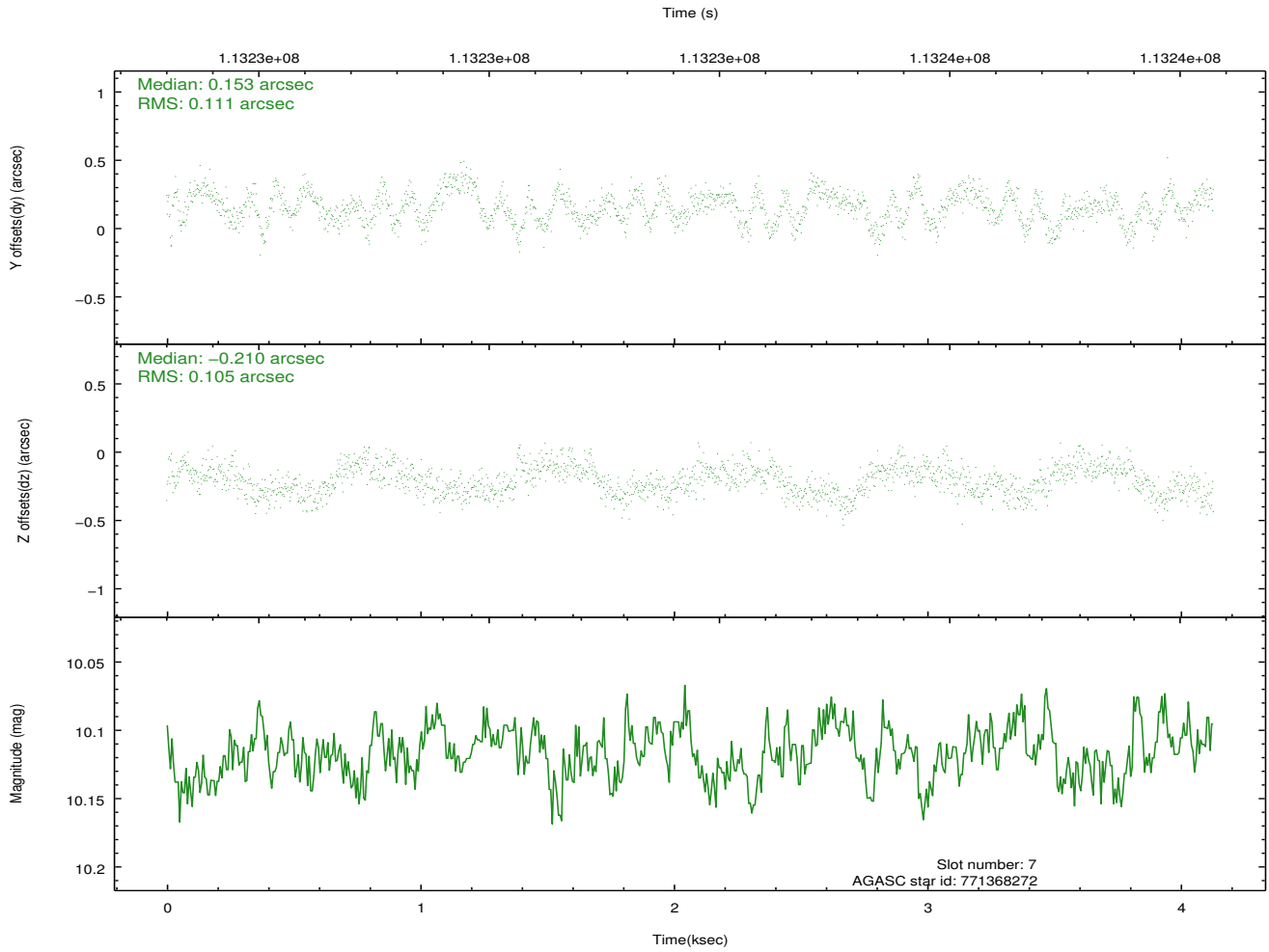
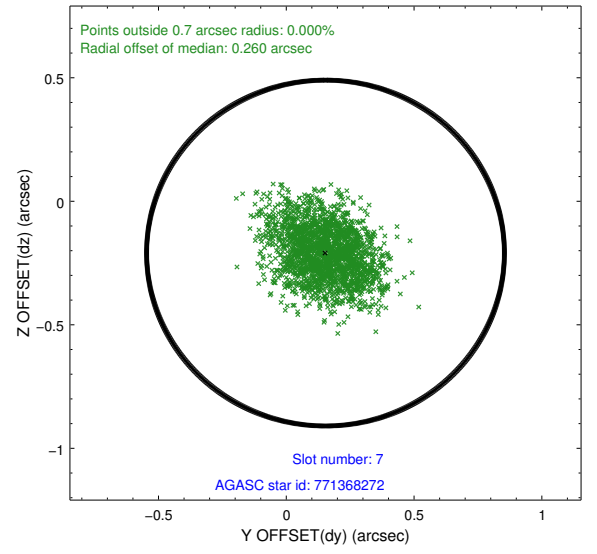
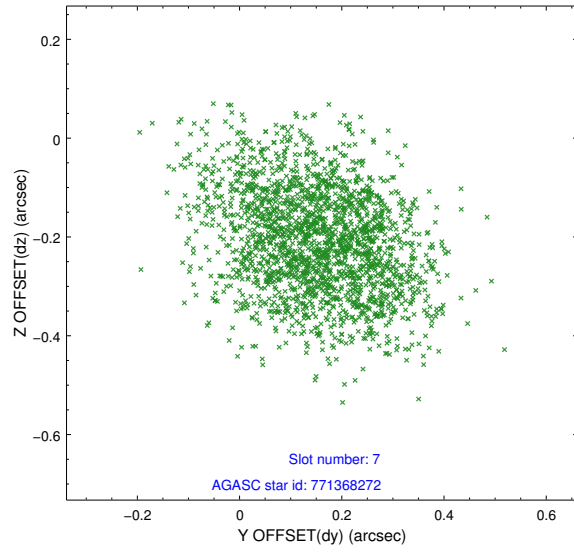
2.4.3 Slot 5



2.4.4 Slot 6

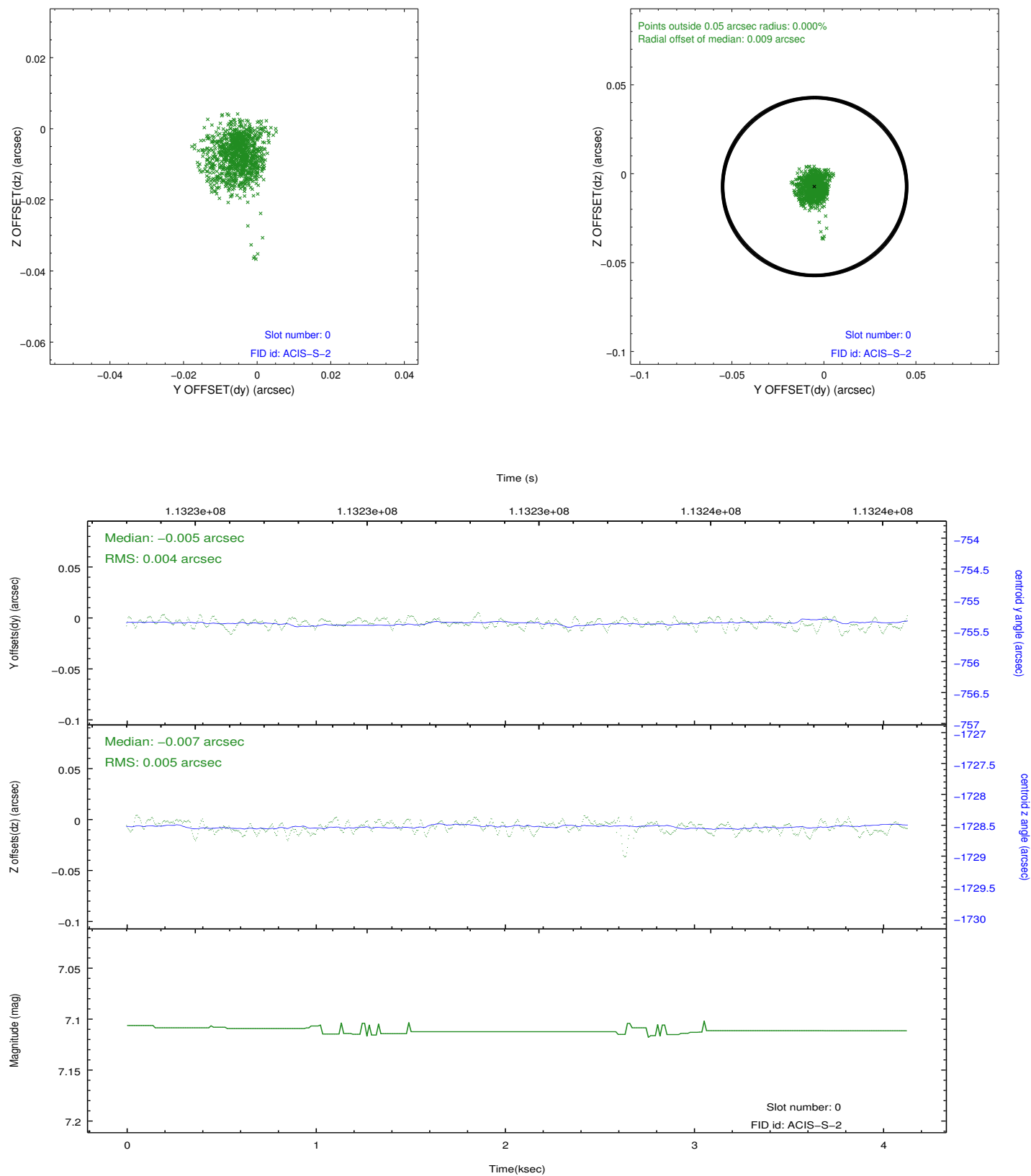


2.4.5 Slot 7

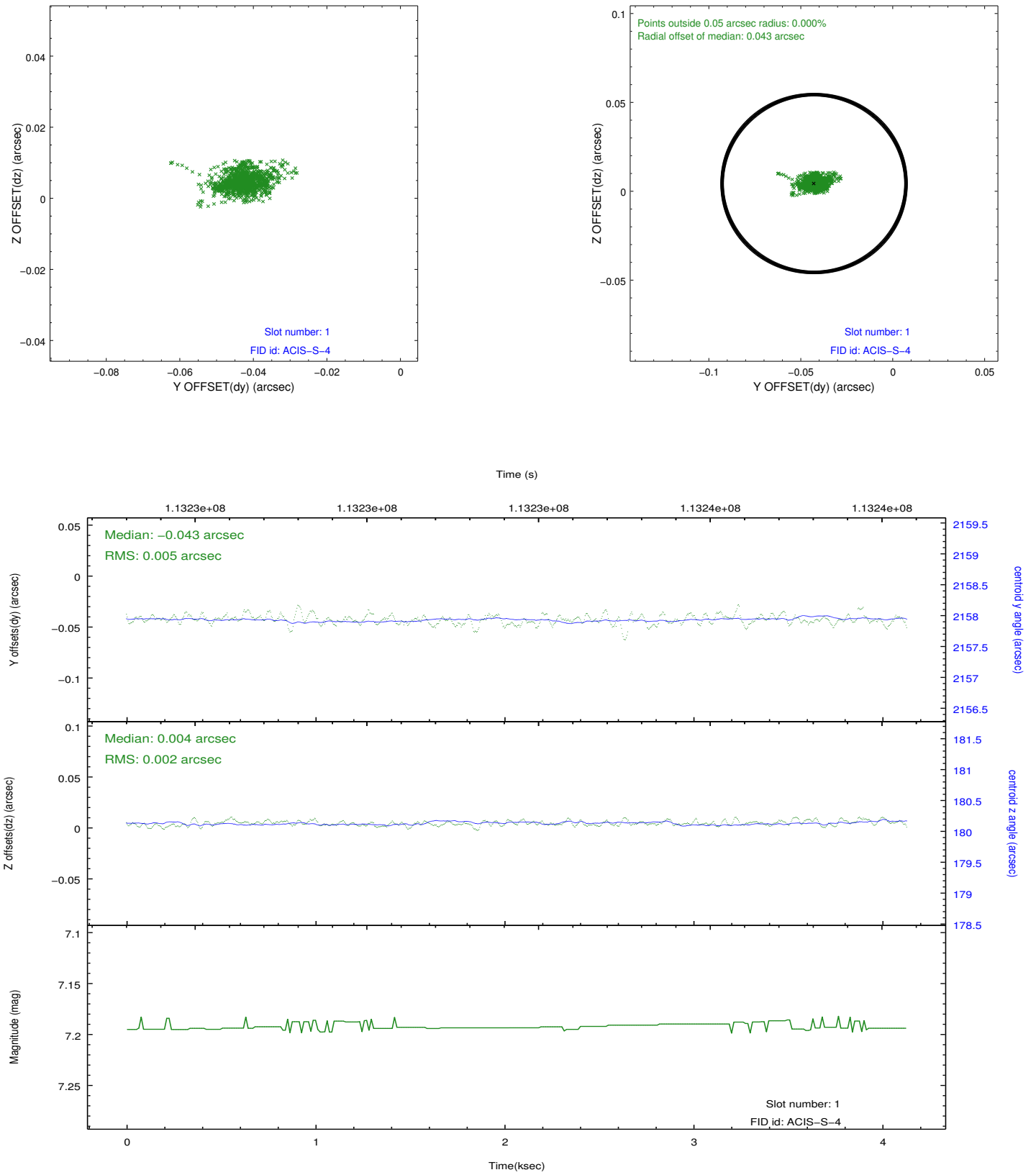


2.5 FID Slots

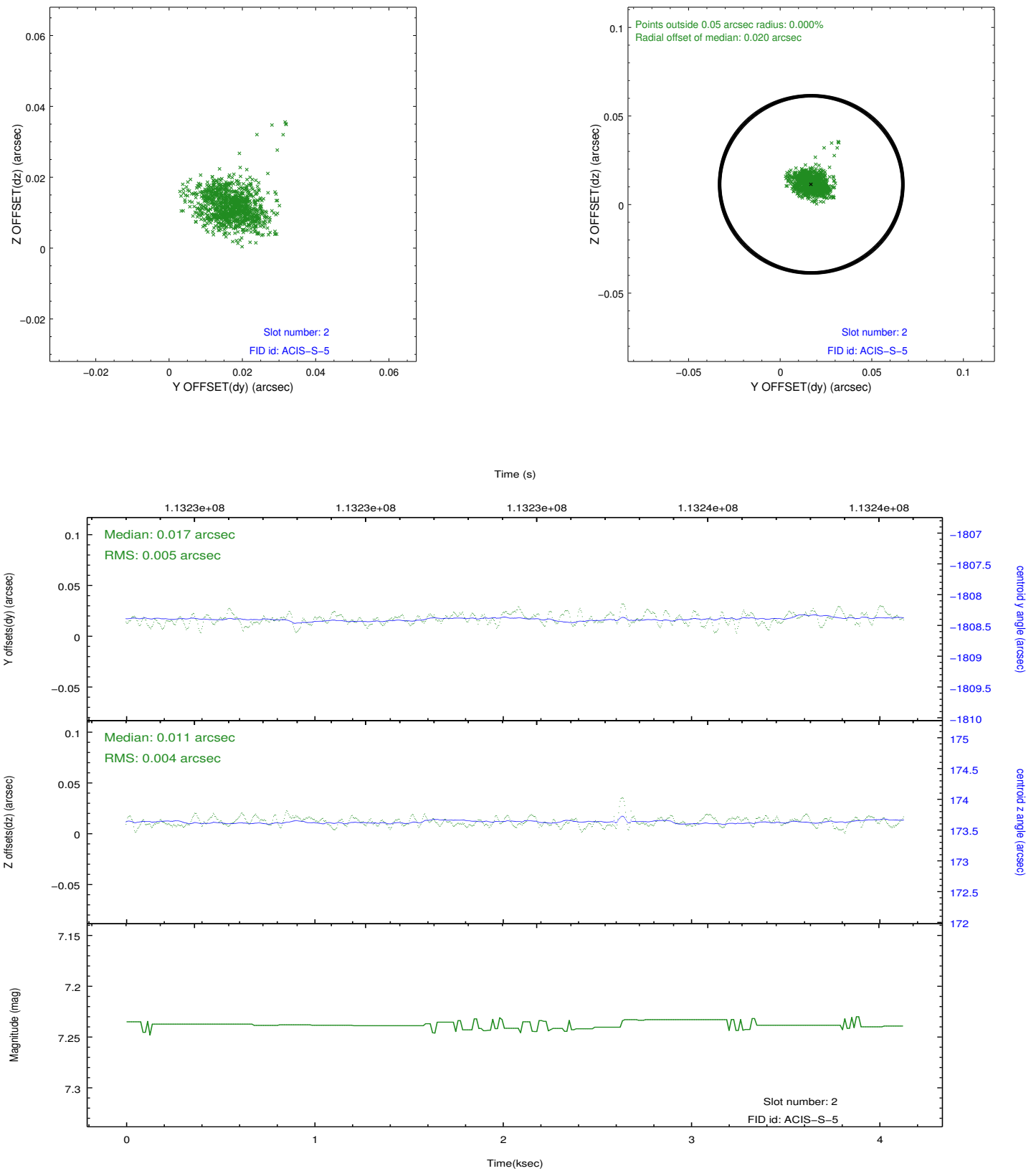
2.5.1 Slot 0



2.5.2 Slot 1



2.5.3 Slot 2



A Summary

A.1 Status

V&V Scientist	Jen Lauer
V&V Date (YYYY-MM-DD)	2012.09.24
V&V Edition	1
V&V Disposition and Status	OK
V&V Charge Time	3.891

A.2 Comments