

V&V Reference Report

L2 ASCDS Version : 7.6.10

Observation 2172 - L2 Version 001
Chandra X-Ray Center

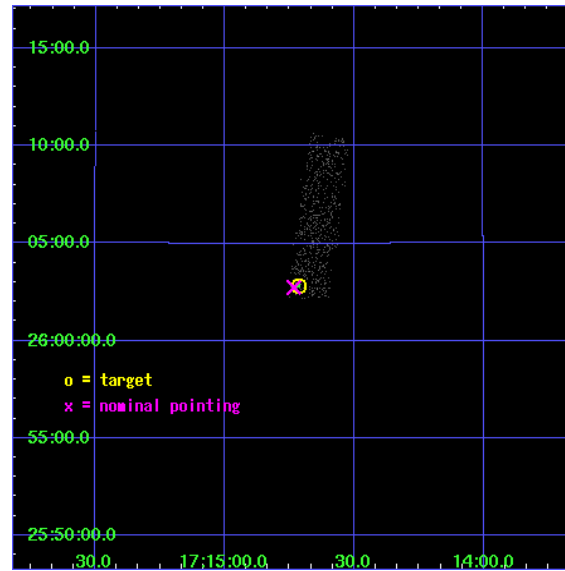
L2 Processing Date : Jan 18 2007

Contents

1	Front	2
2	OBI	3
2.1	OBI	3
2.1.1	Images	3
2.1.2	Bias	3
2.1.3	Parameters	4
2.1.4	Events	4
2.2	Compared Parameters	5
2.3	Aspect	6
2.4	Star Slots	9
2.4.1	Slot 3	9
2.4.2	Slot 4	10
2.4.3	Slot 5	11
2.4.4	Slot 6	12
2.4.5	Slot 7	13
2.5	FID Slots	14
2.5.1	Slot 0	14
2.5.2	Slot 1	15
2.5.3	Slot 2	16
3	Point Sources	17
A	Summary	18
A.1	Status	18
A.2	Comments	18

1 Front

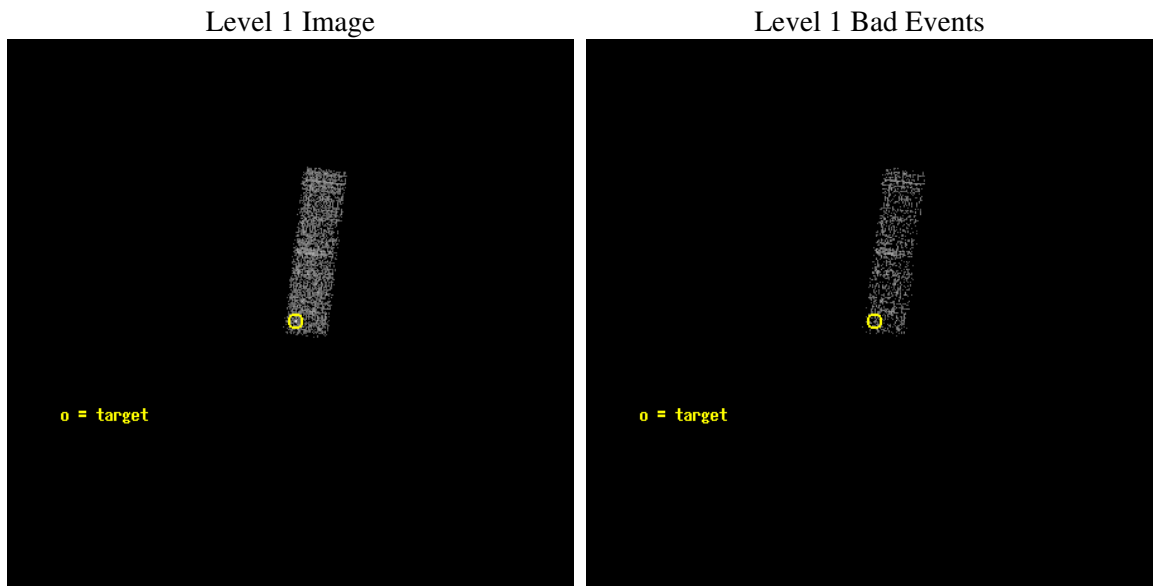
seq_num	700362
obs_id	2172
title	RED QUASARS AND THE X-RAY BACKGROUND
observer	Dr. BELINDA WILKES
object	2MASSJ171442+2602
dtcycle	0
cycle	P
ra_targ	258.678333
dec_targ	26.046806
ra_nom	258.68326164645
dec_nom	26.045589552398
roll_nom	7.3512864777005
revision	2
ontime	3217.5999880135
livetime	3060.5916370337
ontime3	3217.5999880135
l2events	808



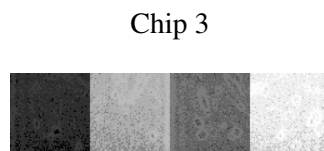
2 OBI

2.1 OBI

2.1.1 Images



2.1.2 Bias



2.1.3 Parameters

obi_num	1
ascdsver	7.6.10
caldbver	3.3.0
date	2007-01-18T04:56:44
revision	2

sched_exp_time	3000.000000
ontime	3217.5999880135
ontime3	3217.5999880135
l1events	8390

2.1.4 Events

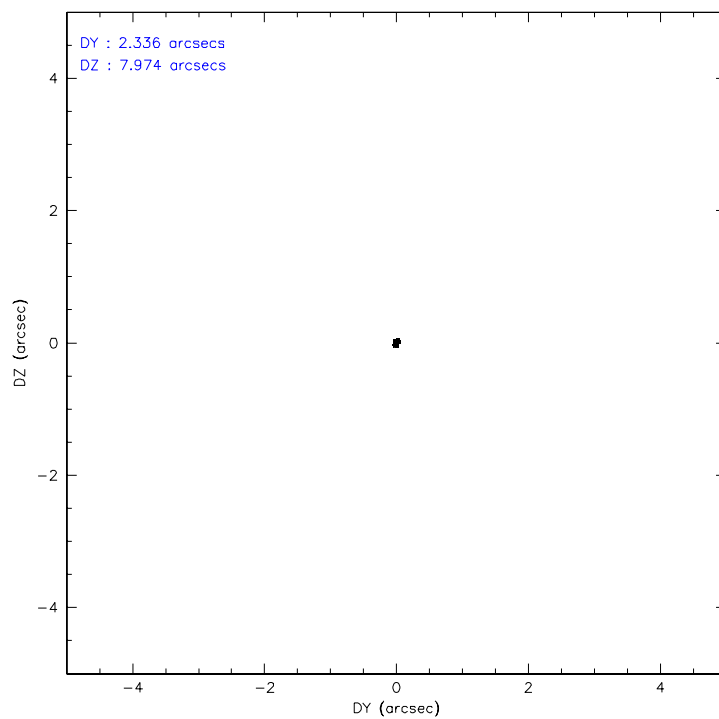
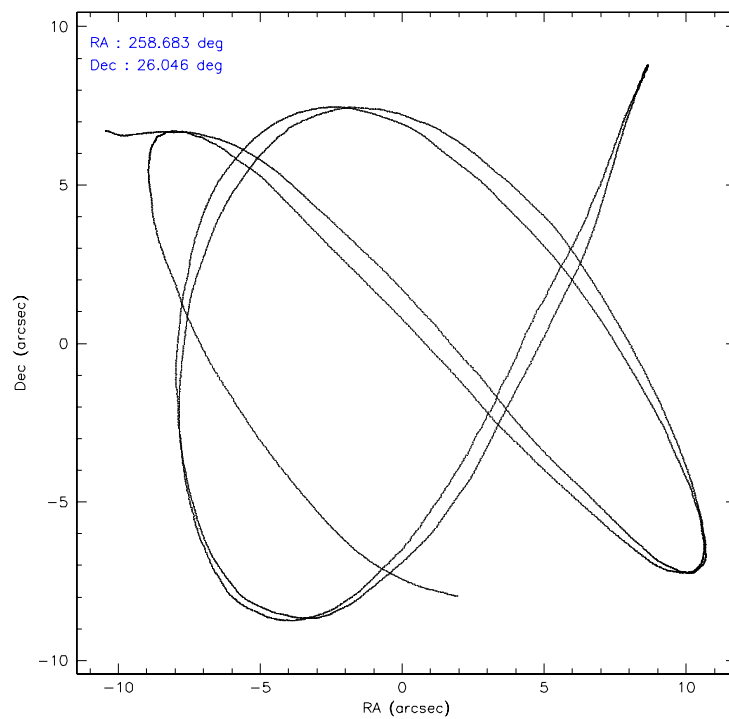
	ccd 3
level 1 events	8390
rejected events	7458
rejected %	88%

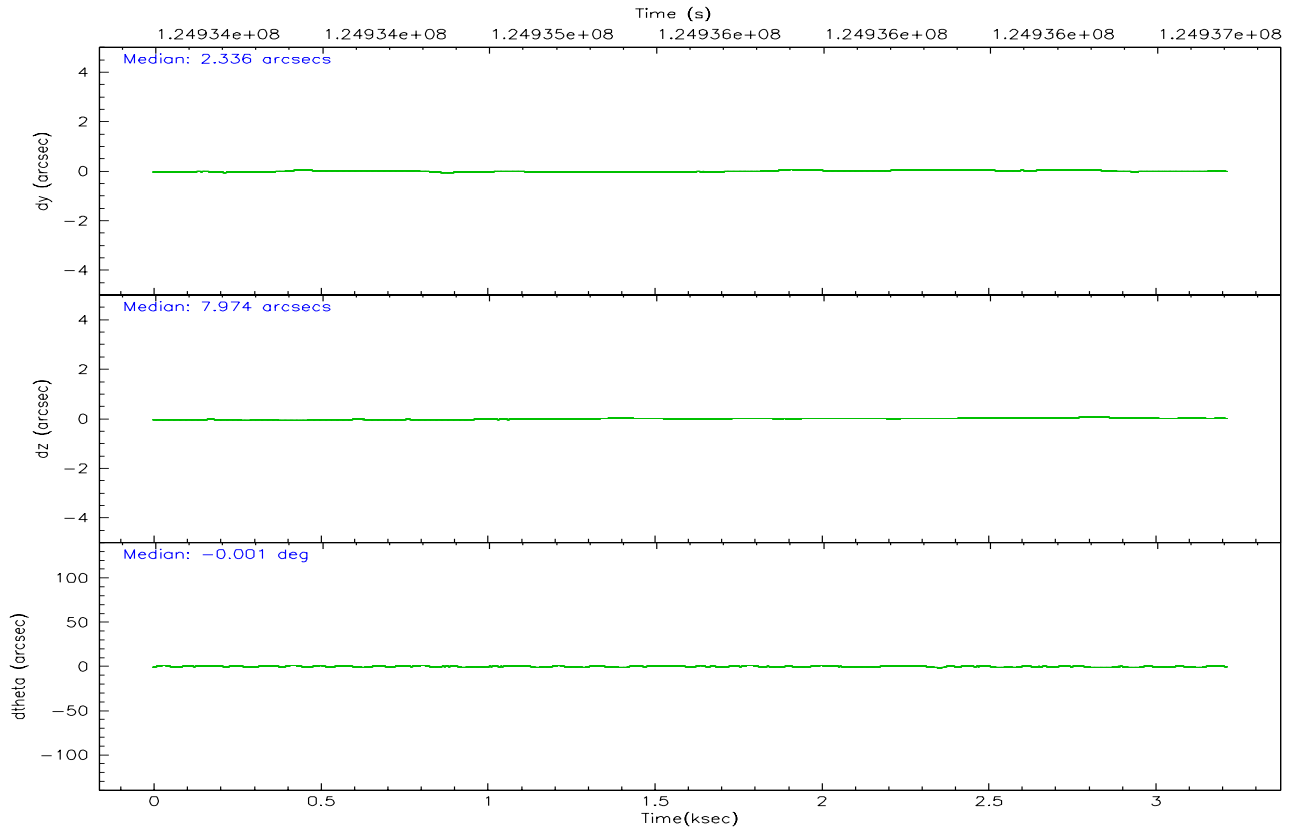
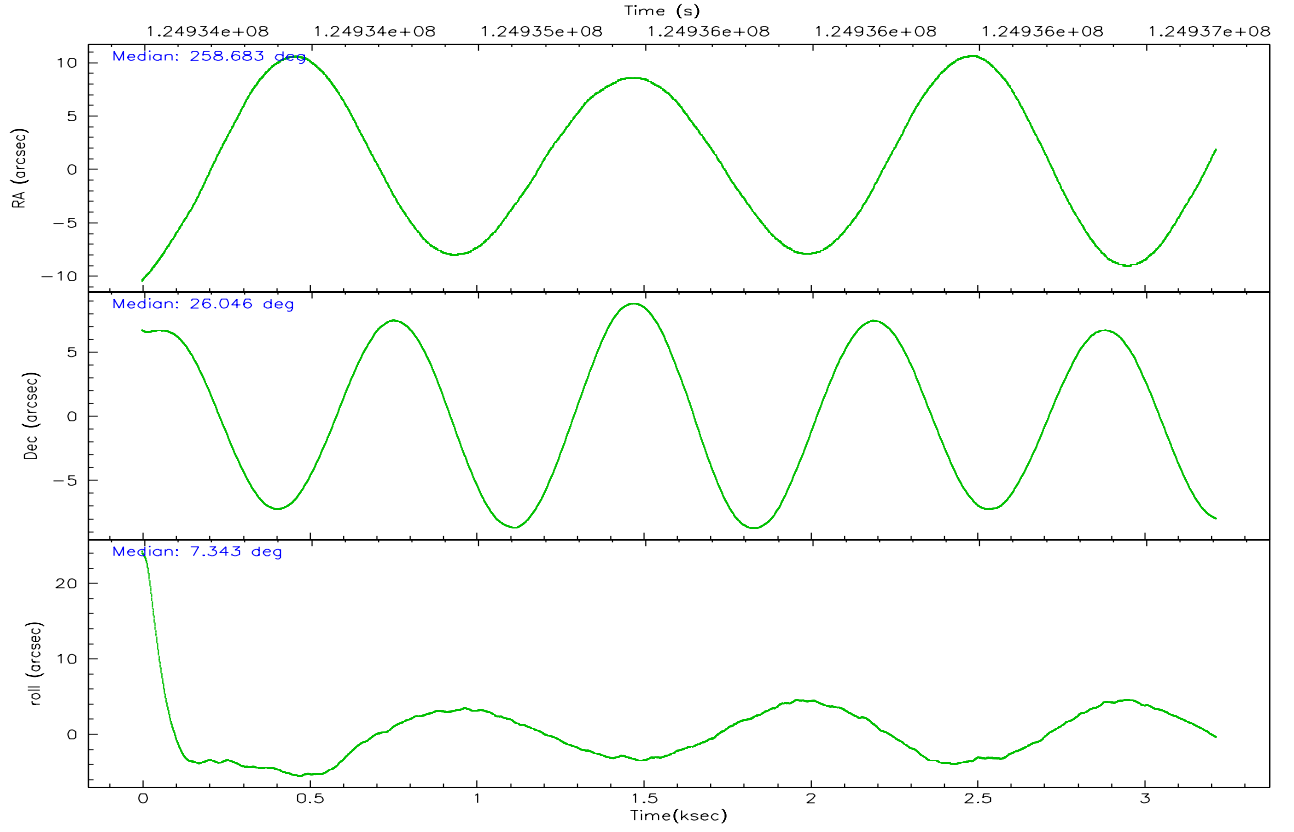
	ccd 3
grade 0 events	502
	5%
grade 1 events	5
	0%
grade 2 events	174
	2%
grade 3 events	142
	1%
grade 4 events	131
	1%
grade 5 events	237
	2%
grade 6 events	141
	1%
grade 7 events	7058
	84%

2.2 Compared Parameters

Parameter	Planned	Actual	Parameter	Planned	Actual
Instrument	ACIS	ACIS	Obspar format version number	6	6
Detector	ACIS-3	ACIS-3	Obspar file type	PREDICTED	ACTUAL
Grating	NONE	NONE	Obspar update status	NONE	UPDATED
Data mode	VFAINT	VFAINT	Number of optional ACIS chips dropped	0	0
Observation mode	POINTING	POINTING	On-chip summing requested	N	N
Pointing RA	258.659157	258.683261646454	Subarray requested	1/4	1/4
Pointing Dec	26.028848	26.04558955239785	Subarray start row	0	769
Pointing Roll	7.153194	7.351286477700545	Subarray row count	1024	256
SIM focus pos (mm)	-0.782348	-0.7809083437167272	Alternating exposures requested	N	N
SIM defocus (mm)	0	0.001439871863259334	Primary exposure time	0.000000	0.8
SIM translation stage pos (mm)	-233.592463	-233.5874344608287			
SIM translation stage offset (mm)	0	-0.005018542100998502			
Observation start time	124934206.184000	124933233.38482			
Observation start date	2001-12-16T23:55:42	2001-12-16T23:40:33			
Observation end time	124937206.184000	124937413.84749			
Observation end date	2001-12-17T00:45:42	2001-12-17T00:50:13			
Read mode	TIMED	TIMED			

2.3 Aspect



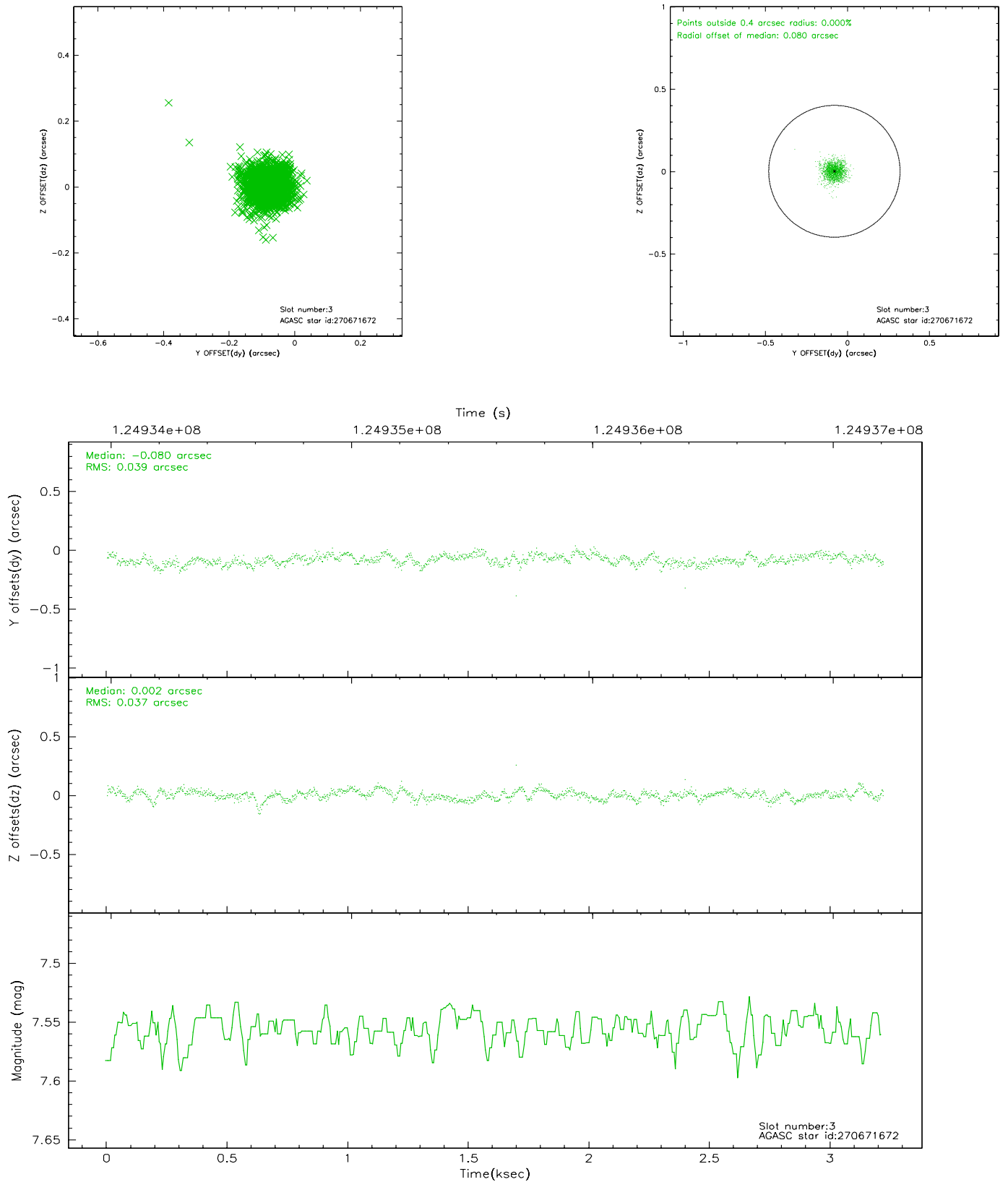


Slot Statistics

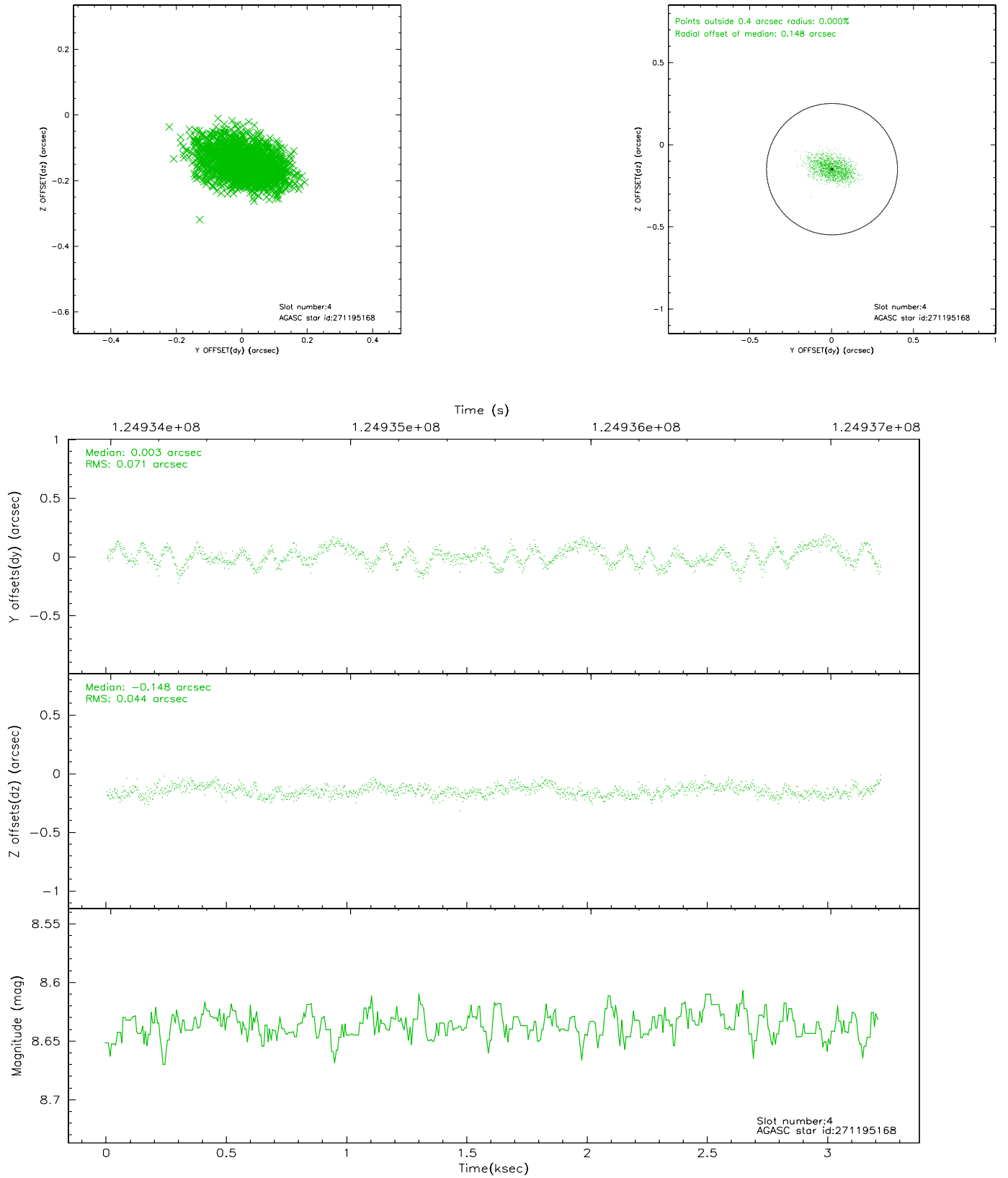
slot	status	id	mag	n_pts	med_dy	med_dz	dr1	dr2	ra	dec	mean_y	mean_z
0	FID	ACIS-I-1	7.25	783	-0.052	0.095	0.006	0.010	0.000000	0.000000	937.41	-831.31
1	FID	ACIS-I-5	7.24	785	0.012	0.029	0.006	0.010	0.000000	0.000000	-1809.50	1065.17
2	FID	ACIS-I-6	7.26	785	-0.051	-0.053	0.006	0.010	0.000000	0.000000	400.85	1711.80
3	GUIDE	270671672	7.56	1571	-0.080	0.002	0.055	0.091	259.295046	25.873850	1975.67	-805.21
4	GUIDE	271195168	8.64	1571	0.003	-0.148	0.091	0.143	257.950141	26.621060	-1996.19	2404.56
5	GUIDE	270672456	9.05	1570	-0.066	0.070	0.074	0.123	259.009890	25.569479	924.12	-1779.76
6	GUIDE	270666136	9.40	1569	0.035	0.162	0.084	0.138	258.172610	25.875381	-1630.72	-350.56
7	GUIDE	270664584	9.47	1570	0.112	-0.083	0.113	0.172	257.967811	26.200494	-2138.32	896.15

2.4 Star Slots

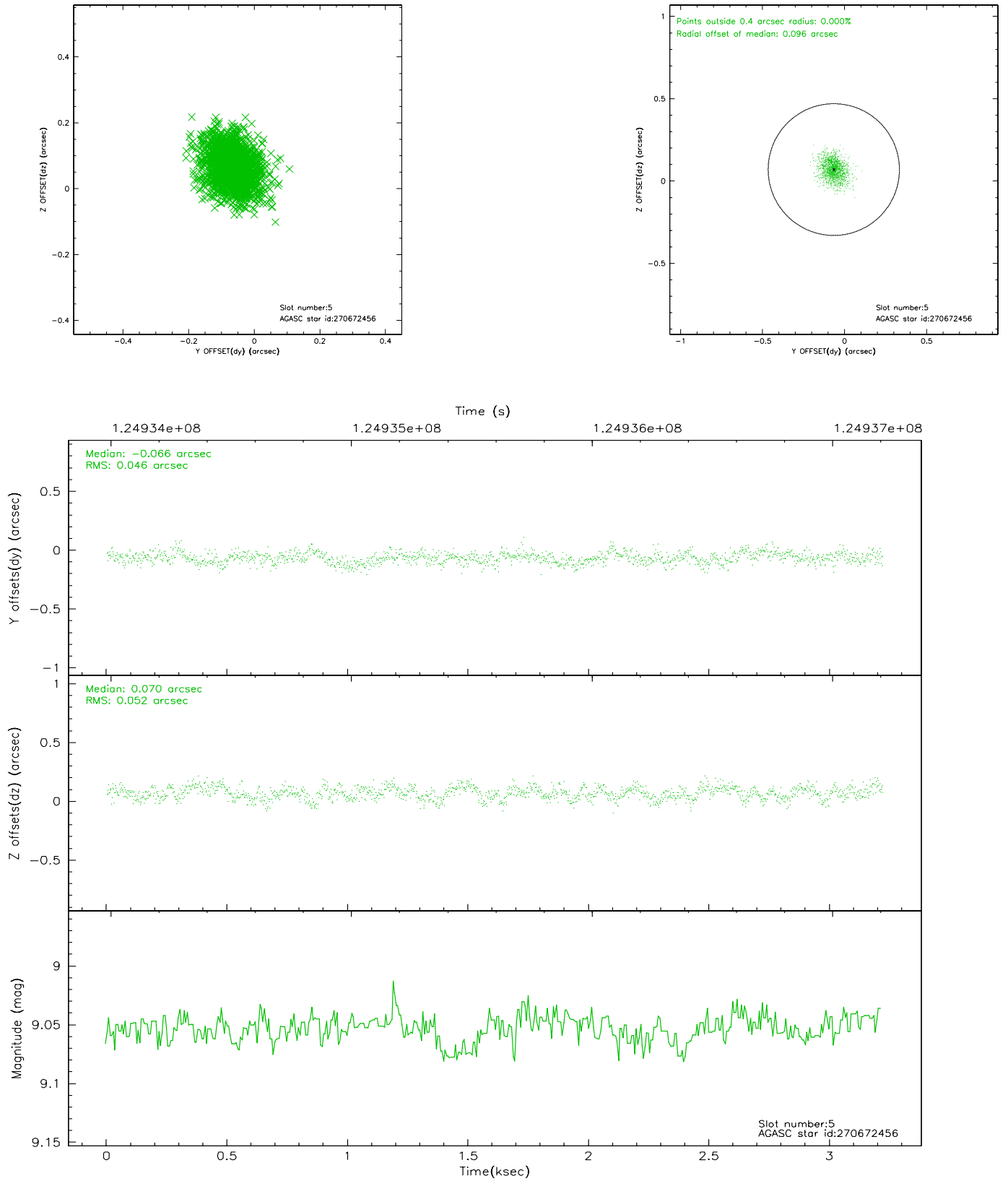
2.4.1 Slot 3



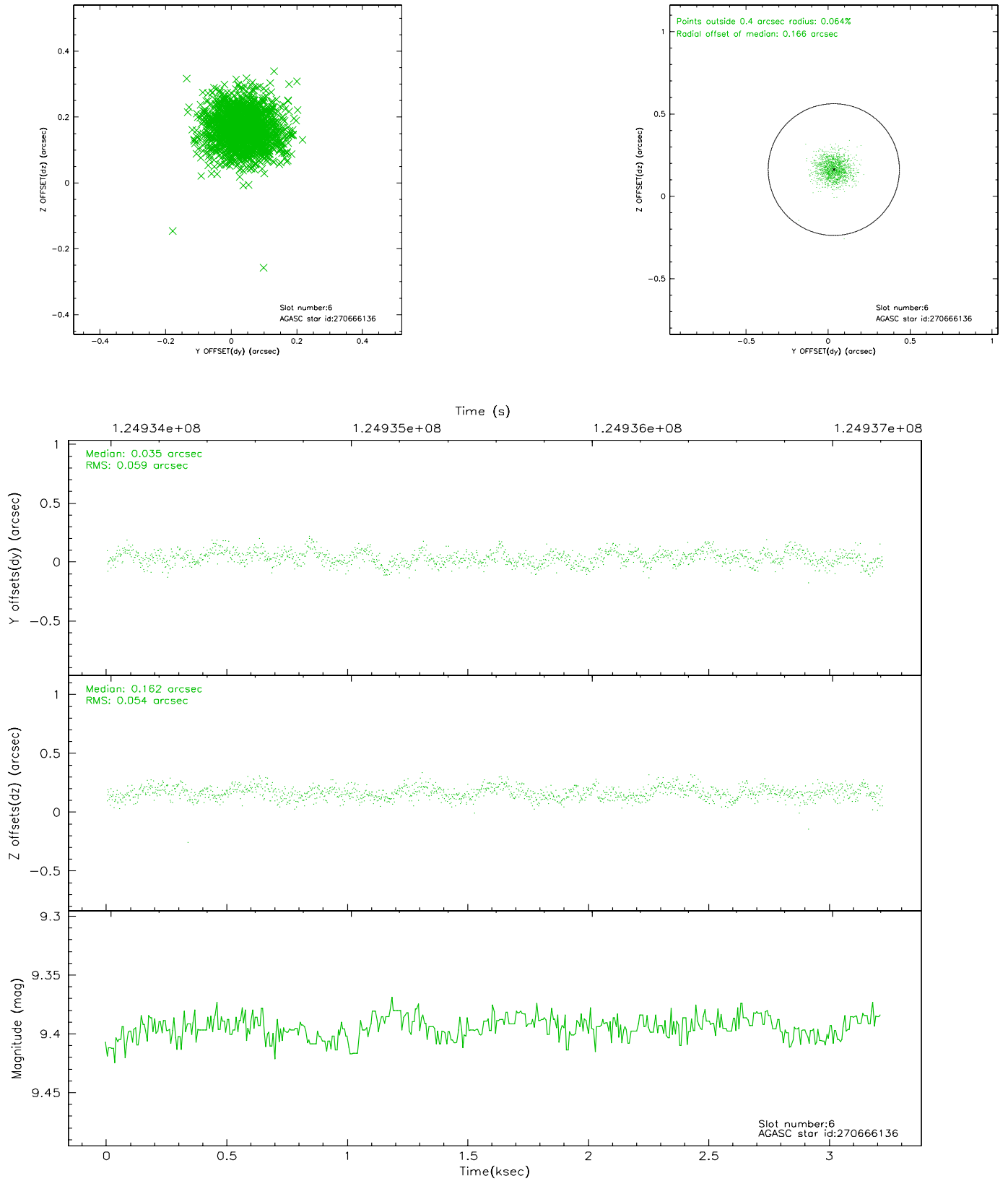
2.4.2 Slot 4



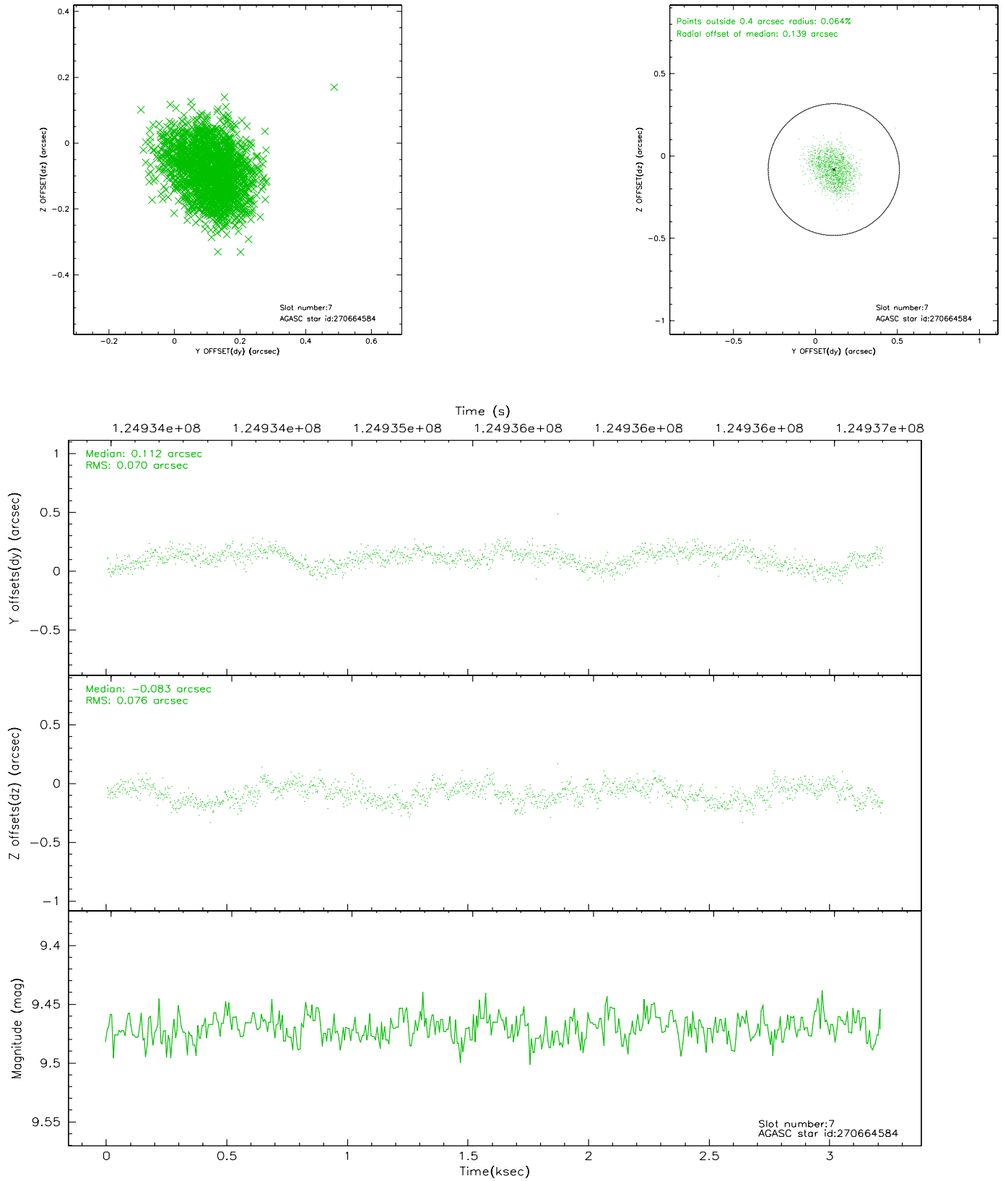
2.4.3 Slot 5



2.4.4 Slot 6

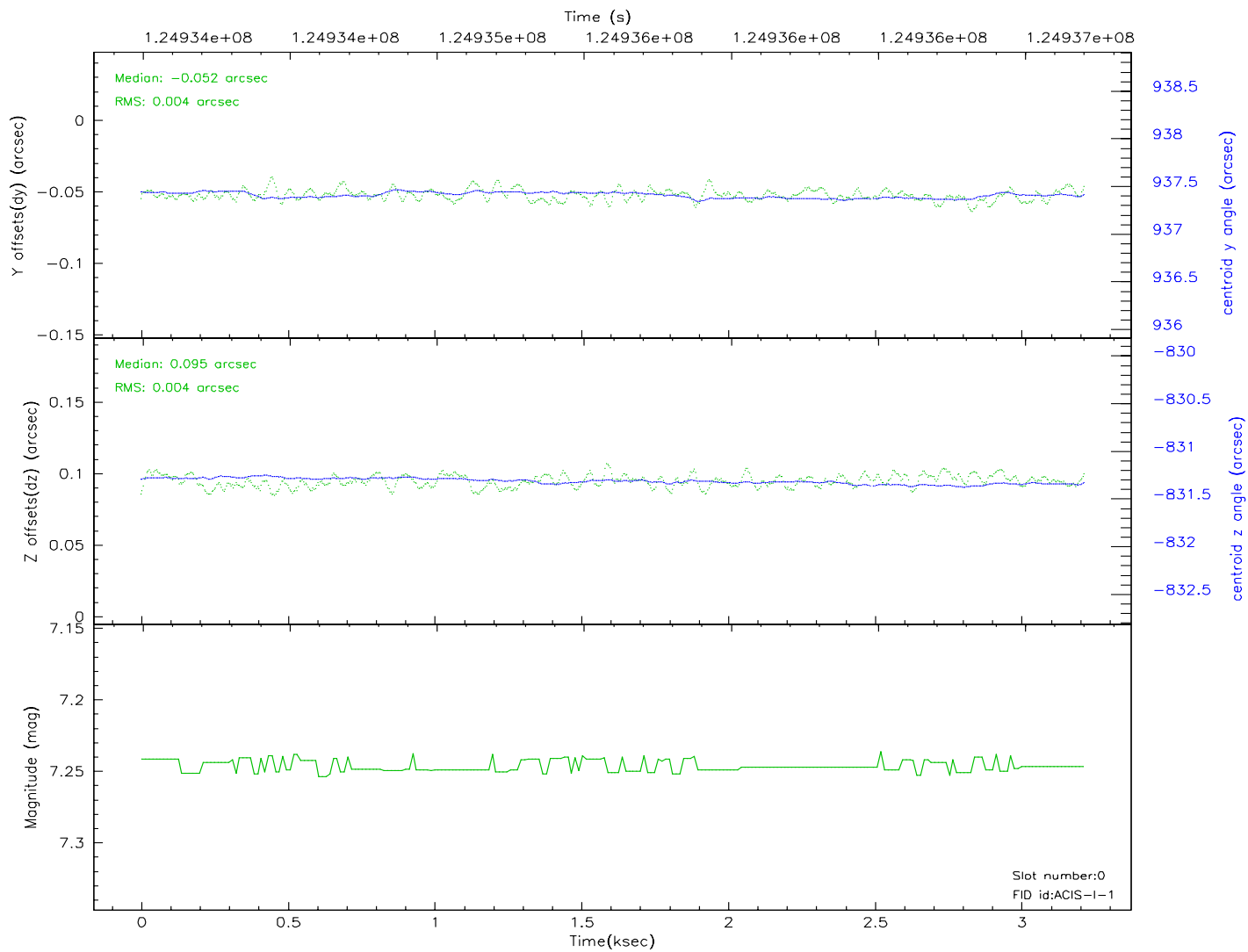
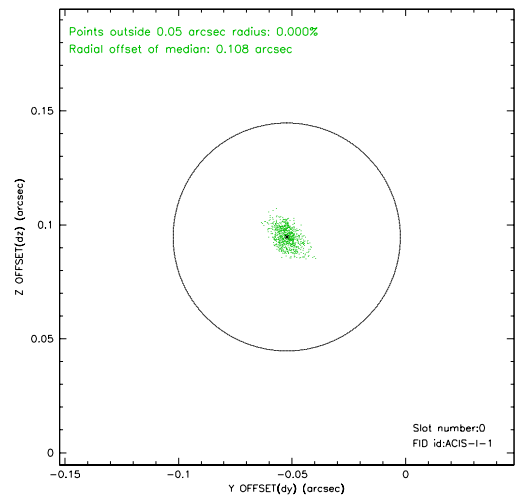
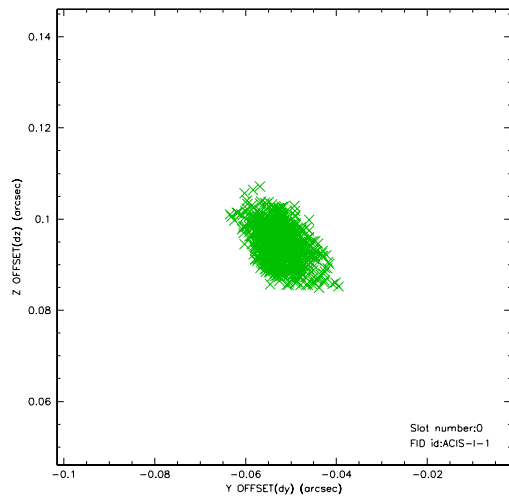


2.4.5 Slot 7

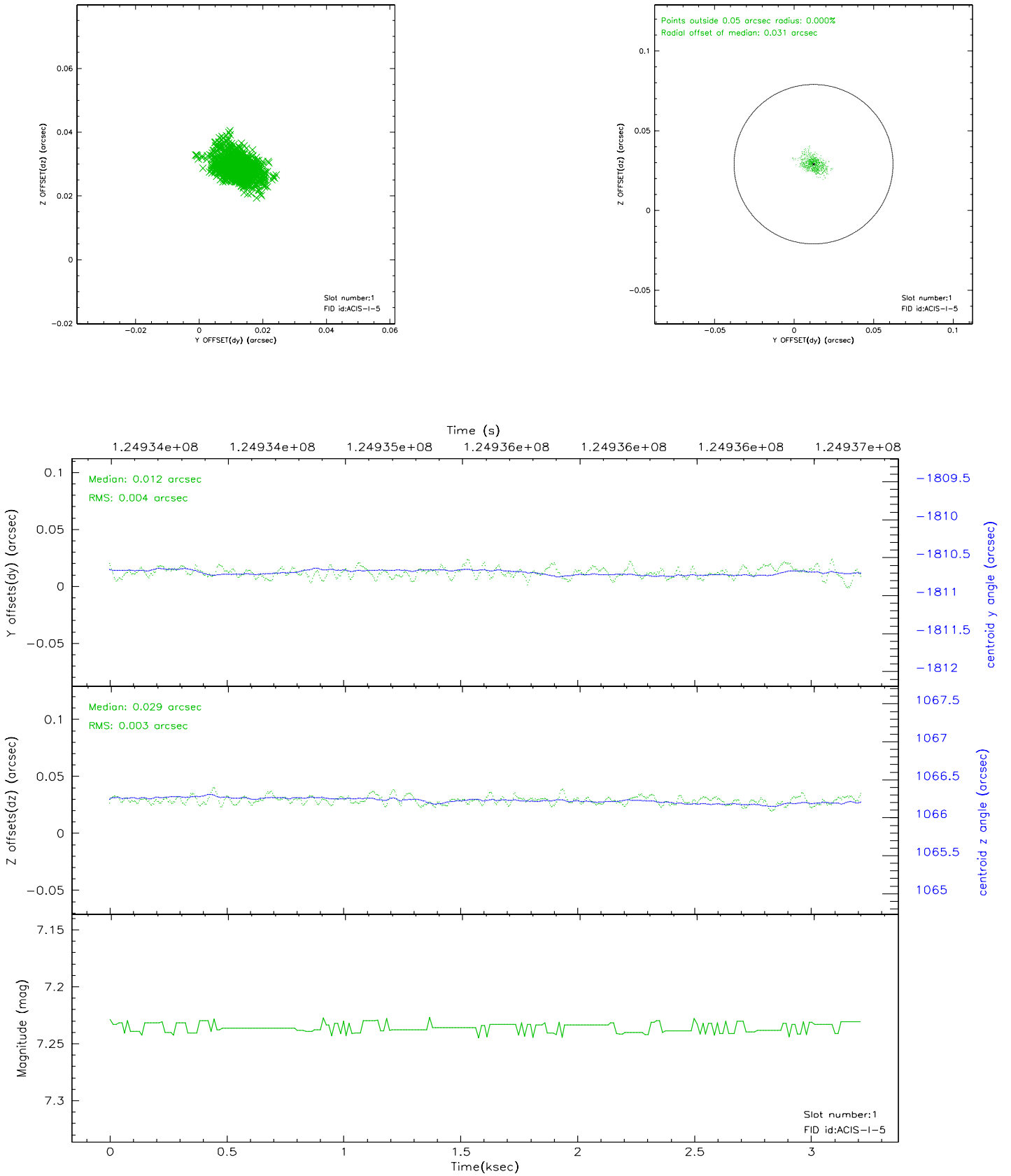


2.5 FID Slots

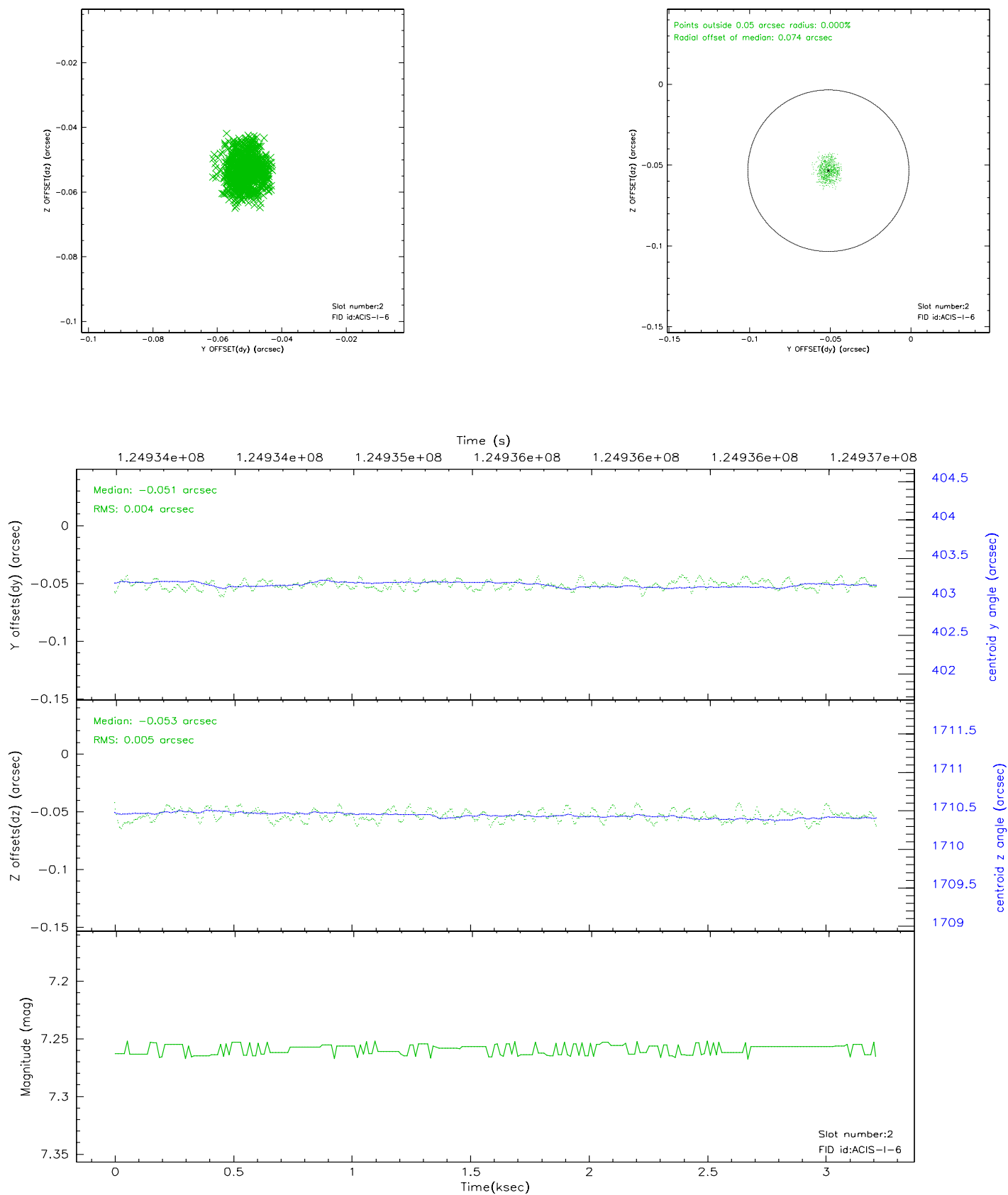
2.5.1 Slot 0



2.5.2 Slot 1



2.5.3 Slot 2



3 Point Sources

A Summary

A.1 Status

V&V Scientist	Beth Sundheim
V&V Date (YYYY-MM-DD)	2007.01.18
V&V Edition	1
V&V Disposition and Status	OK
V&V Charge Time	3.217

A.2 Comments