

# V&V Reference Report

## L2 ASCDS Version : 7.6.9

Observation 2152 - L2 Version 001  
Chandra X-Ray Center

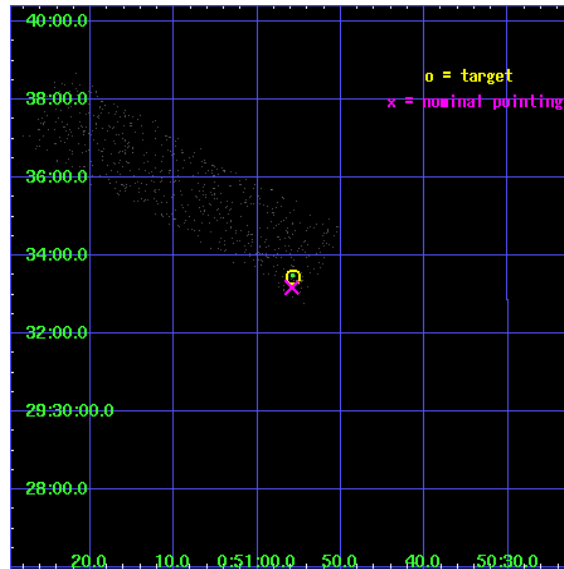
L2 Processing Date : Nov 4 2006

## Contents

<b>1</b>	<b>Front</b>	<b>2</b>
<b>2</b>	<b>OBI</b>	<b>3</b>
2.1	OBI . . . . .	3
2.1.1	Images . . . . .	3
2.1.2	Bias . . . . .	3
2.1.3	Parameters . . . . .	4
2.1.4	Events . . . . .	4
2.2	Compared Parameters . . . . .	5
2.3	Aspect . . . . .	6
2.4	Star Slots . . . . .	9
2.4.1	Slot 3 . . . . .	9
2.4.2	Slot 4 . . . . .	10
2.4.3	Slot 5 . . . . .	11
2.4.4	Slot 6 . . . . .	12
2.4.5	Slot 7 . . . . .	13
2.5	FID Slots . . . . .	14
2.5.1	Slot 0 . . . . .	14
2.5.2	Slot 1 . . . . .	15
2.5.3	Slot 2 . . . . .	16
<b>3</b>	<b>Point Sources</b>	<b>17</b>
<b>A</b>	<b>Summary</b>	<b>18</b>
A.1	Status . . . . .	18
A.2	Comments . . . . .	18

# 1 Front

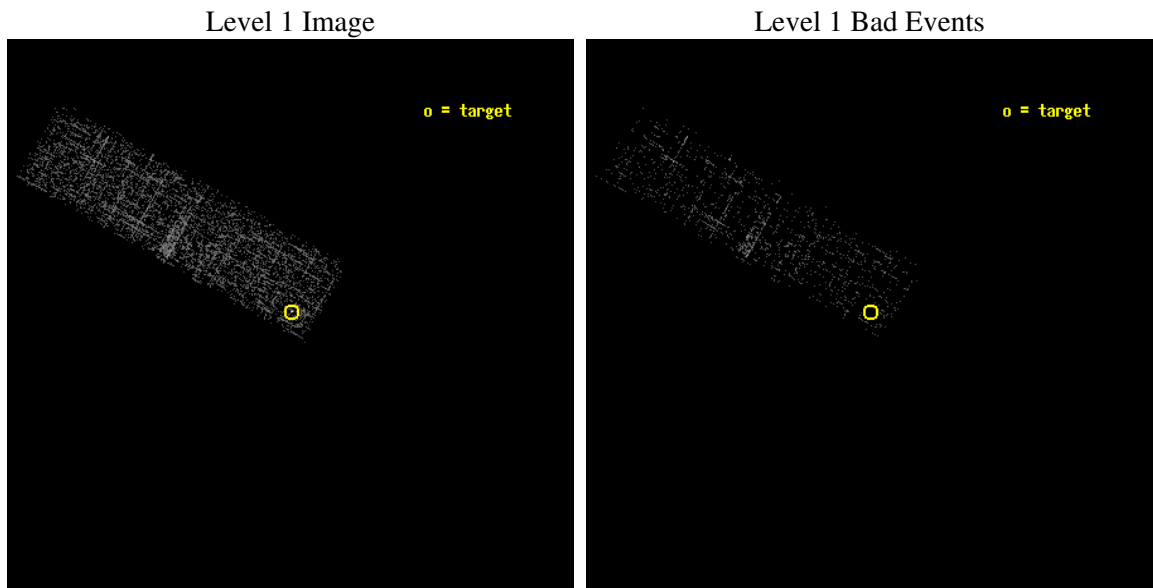
seq_num	700342
obs_id	2152
title	RED QUASARS AND THE X-RAY BACKGROUND
observer	Dr. BELINDA WILKES
object	2MASSJ005055+2933
dtcycle	0
cycle	P
ra_targ	12.732083
dec_targ	29.557806
ra_nom	12.732843037173
dec_nom	29.55305579671
roll_nom	299.6727218701
revision	2
ontime	3643.999986425
livetime	3466.1847107629
ontime3	3643.999986425
l2events	787



## 2 OBI

### 2.1 OBI

#### 2.1.1 Images



#### 2.1.2 Bias



### 2.1.3 Parameters

obi_num	0
ascdsver	7.6.9
caldsver	3.2.3
date	2006-11-04T09:42:53
revision	2

sched_exp_time	3800.000000
ontime	3645.8612201959
ontime3	3645.8612201959
l1events	7759

### 2.1.4 Events

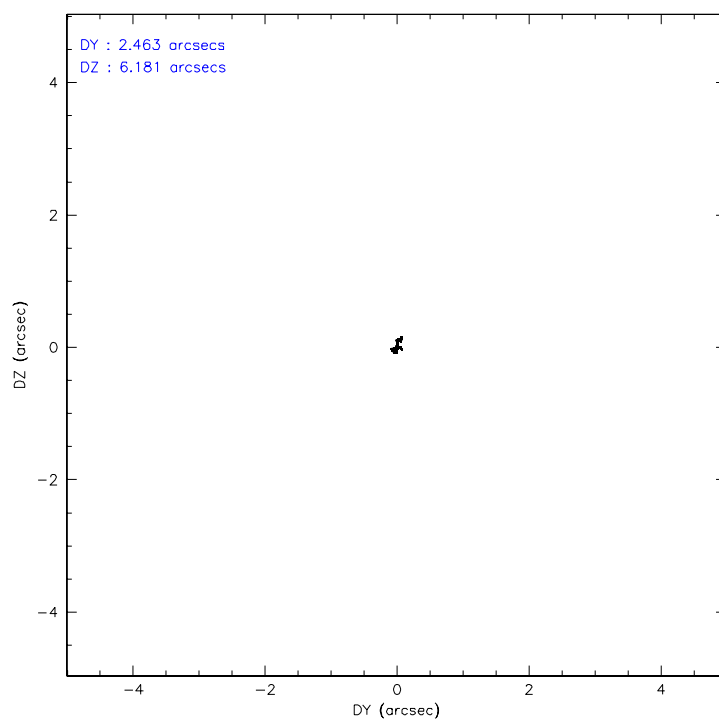
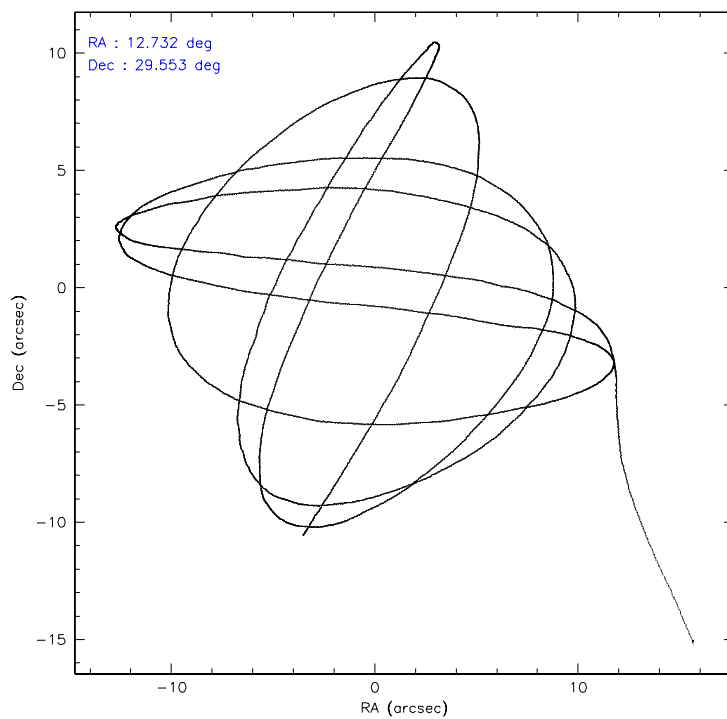
	<b>ccd 3</b>
level 1 events	7759
rejected events	6805
rejected %	87%

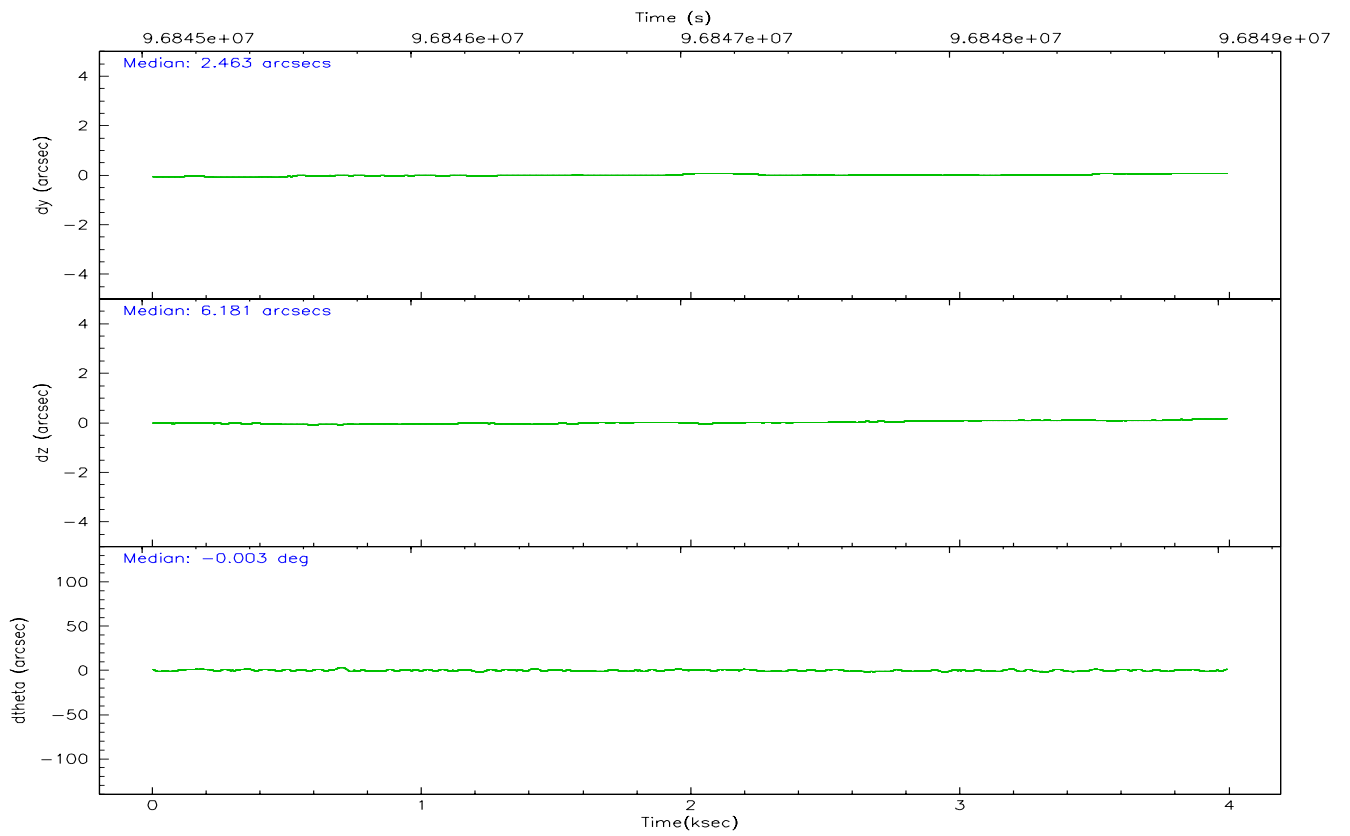
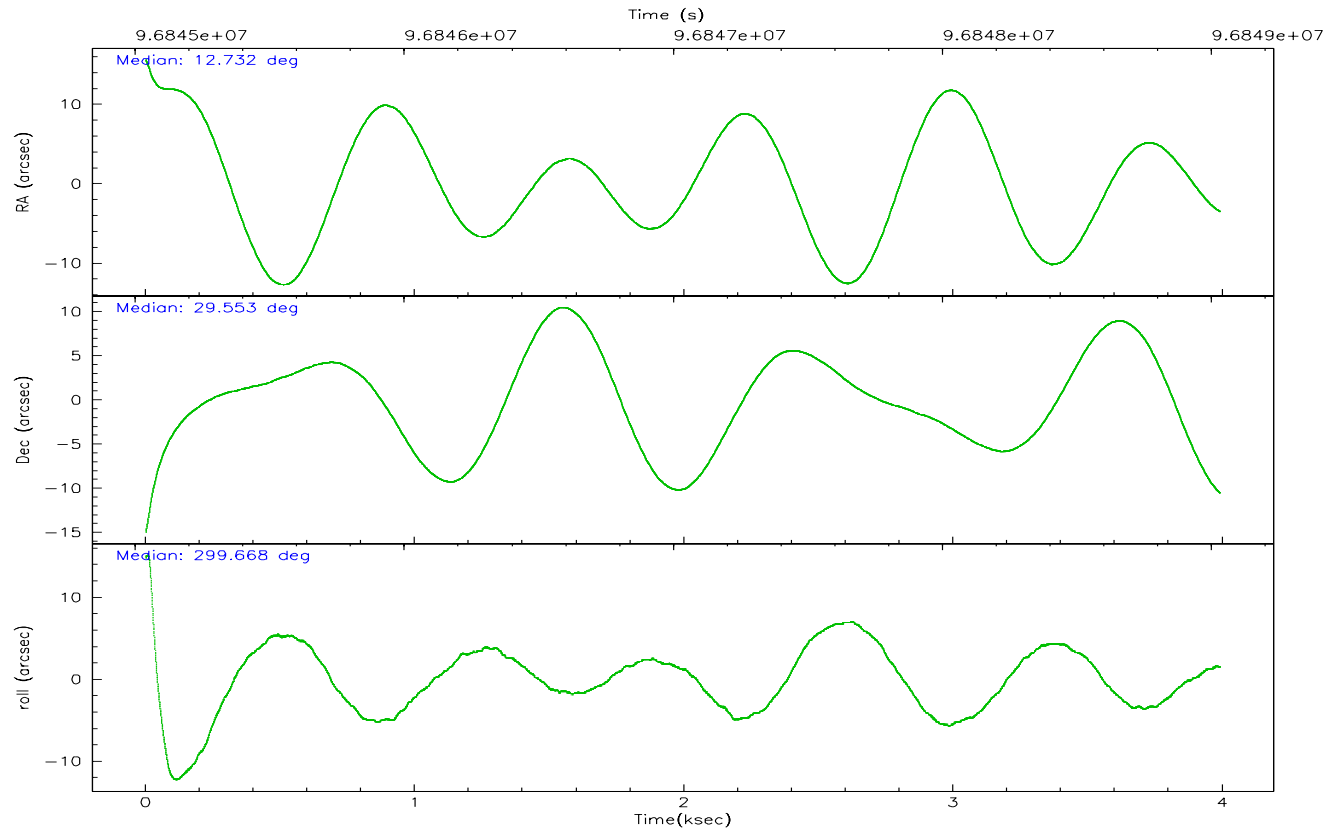
	<b>ccd 3</b>
grade 0 events	380
	4%
grade 1 events	3
	0%
grade 2 events	149
	1%
grade 3 events	139
	1%
grade 4 events	141
	1%
grade 5 events	215
	2%
grade 6 events	145
	1%
grade 7 events	6587
	84%

## 2.2 Compared Parameters

Parameter	Planned	Actual	Parameter	Planned	Actual
Instrument	ACIS	ACIS	Obspar format version number	6	6
Detector	ACIS-3	ACIS-3	Obspar file type	PREDICTED	ACTUAL
Grating	NONE	NONE	Obspar update status	NONE	UPDATED
Data mode	VFAINT	VFAINT	Number of optional ACIS chips dropped	0	0
Observation mode	POINTING	POINTING	On-chip summing requested	N	N
Pointing RA	12.705465	12.73284303717319	Subarray requested	1/4	1/4
Pointing Dec	29.566926	29.55305579671041	Subarray start row	0	769
Pointing Roll	299.477452	299.6727218700979	Subarray row count	1024	256
SIM focus pos (mm)	-0.782348	-0.7809083437167272	Alternating exposures requested	N	N
SIM defocus (mm)	0	0.001439871863259334	Primary exposure time	0.000000	0.8
SIM translation stage pos (mm)	-233.592463	-233.5874344608287			
SIM translation stage offset (mm)	0	-0.005018542100998502			
Observation start time	96845234.184000	96844513.07131501			
Observation start date	2001-01-25T21:26:10	2001-01-25T21:15:13			
Observation end time	96849034.184000	96849483.296507			
Observation end date	2001-01-25T22:29:30	2001-01-25T22:38:03			
Read mode	TIMED	TIMED			

## 2.3 Aspect





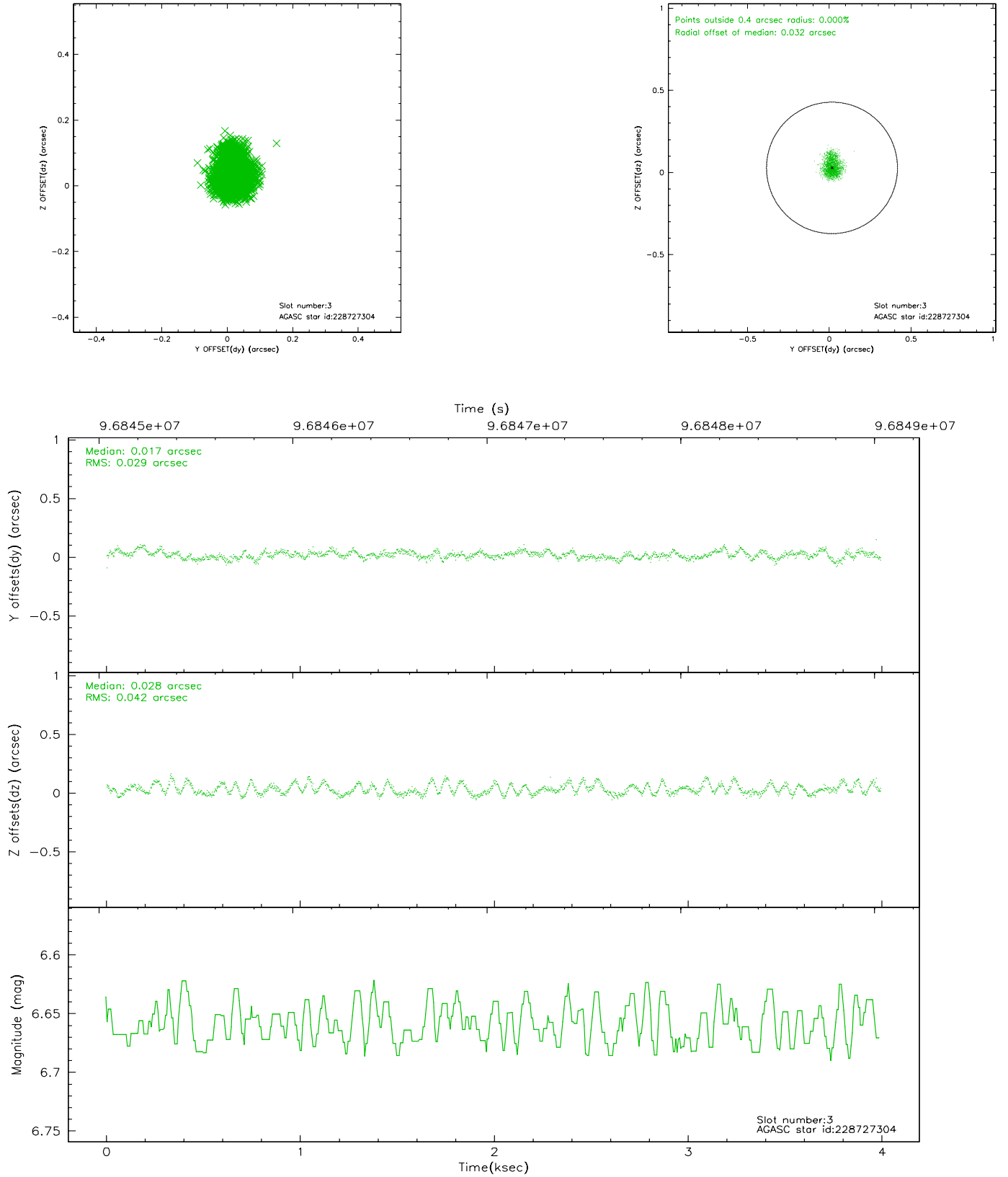
### Slot Statistics

slot	status	id	mag	n_pts	med_dy	med_dz	dr1	dr2	ra	dec	mean_y	mean_z
0	FID	ACIS-I-2	7.16	974	-0.034	0.026	0.006	0.010	0.000000	0.000000	-756.85	-835.92
1	FID	ACIS-I-4	7.19	974	-0.035	0.026	0.007	0.013	0.000000	0.000000	2156.47	1069.52
2	FID	ACIS-I-6	7.26	974	-0.030	0.012	0.009	0.016	0.000000	0.000000	405.21	1713.44
3	GUIDE	228727304	6.66	1948	0.017	0.028	0.054	0.088	13.404071	29.489313	1315.76	1771.97
4	GUIDE	228732672	8.72	1947	0.141	0.051	0.064	0.105	13.225280	29.075260	2344.41	556.09
5	GUIDE	228724952	9.28	1948	0.011	-0.028	0.080	0.130	12.746578	29.716205	-402.30	376.86
6	GUIDE	298328088	9.40	1946	-0.075	0.061	0.093	0.147	12.855234	30.162457	-1636.55	1461.38
7	GUIDE	228725976	9.52	1945	-0.092	-0.110	0.114	0.184	11.888635	29.522636	-1127.78	-2300.75

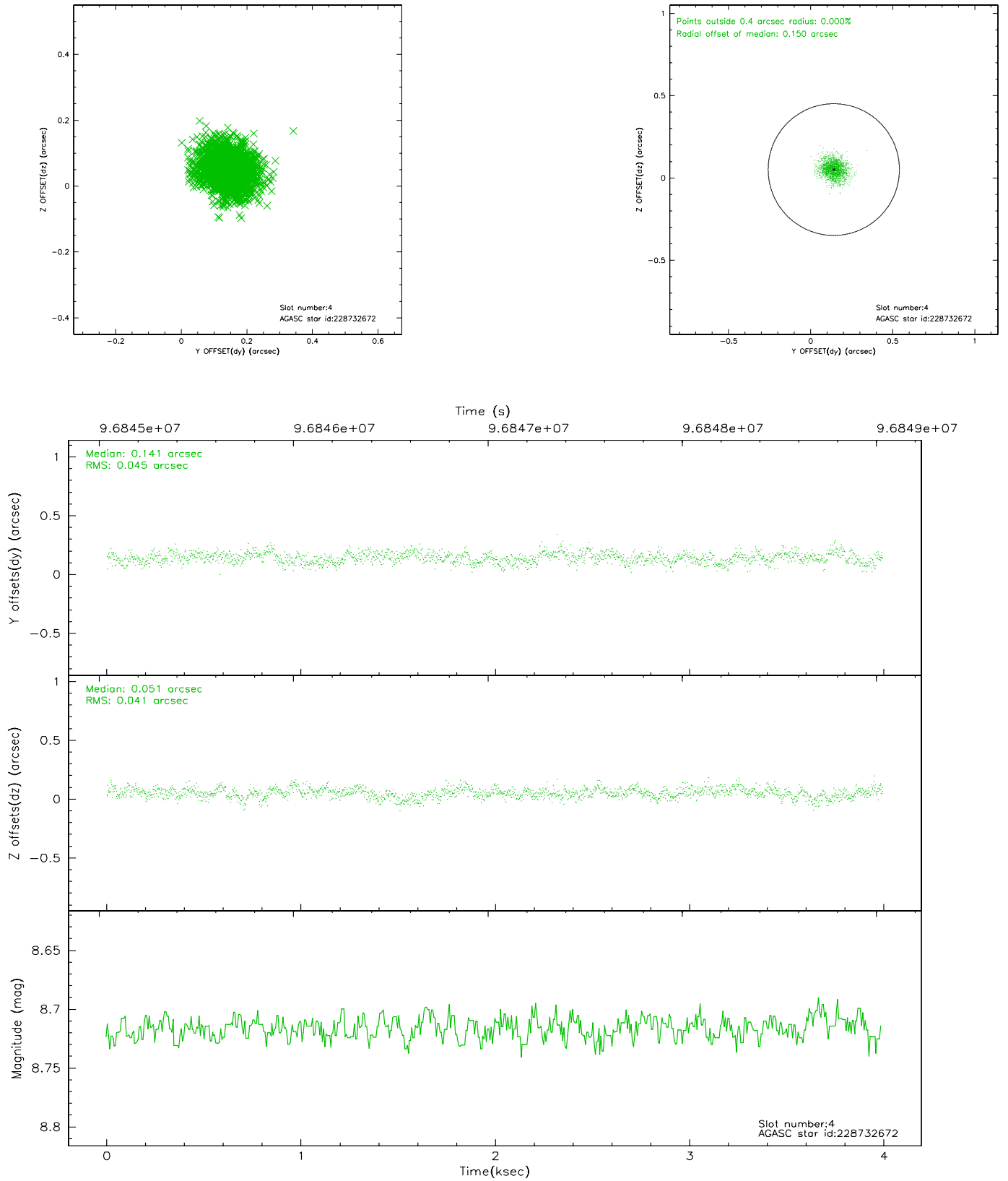


## 2.4 Star Slots

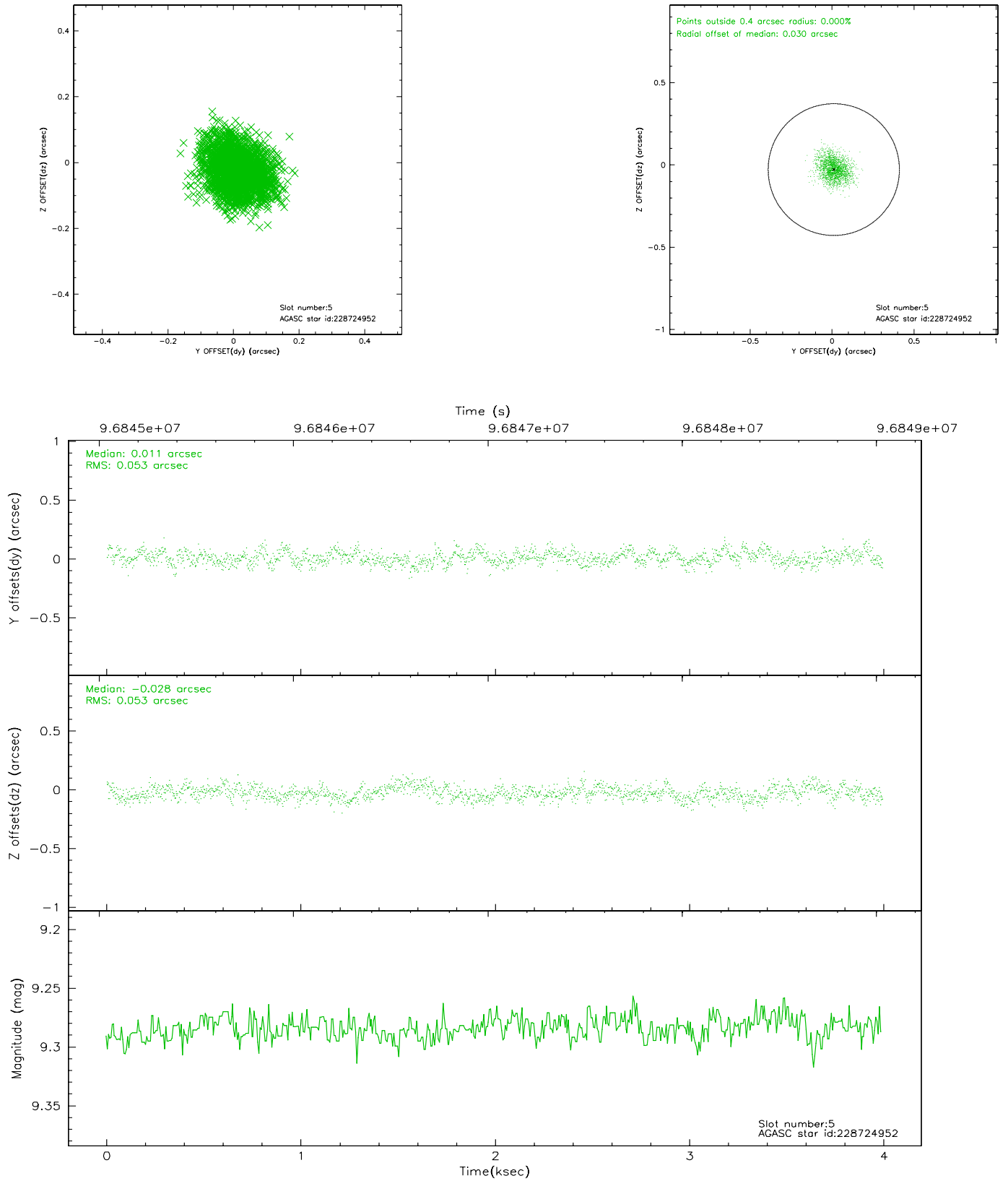
### 2.4.1 Slot 3



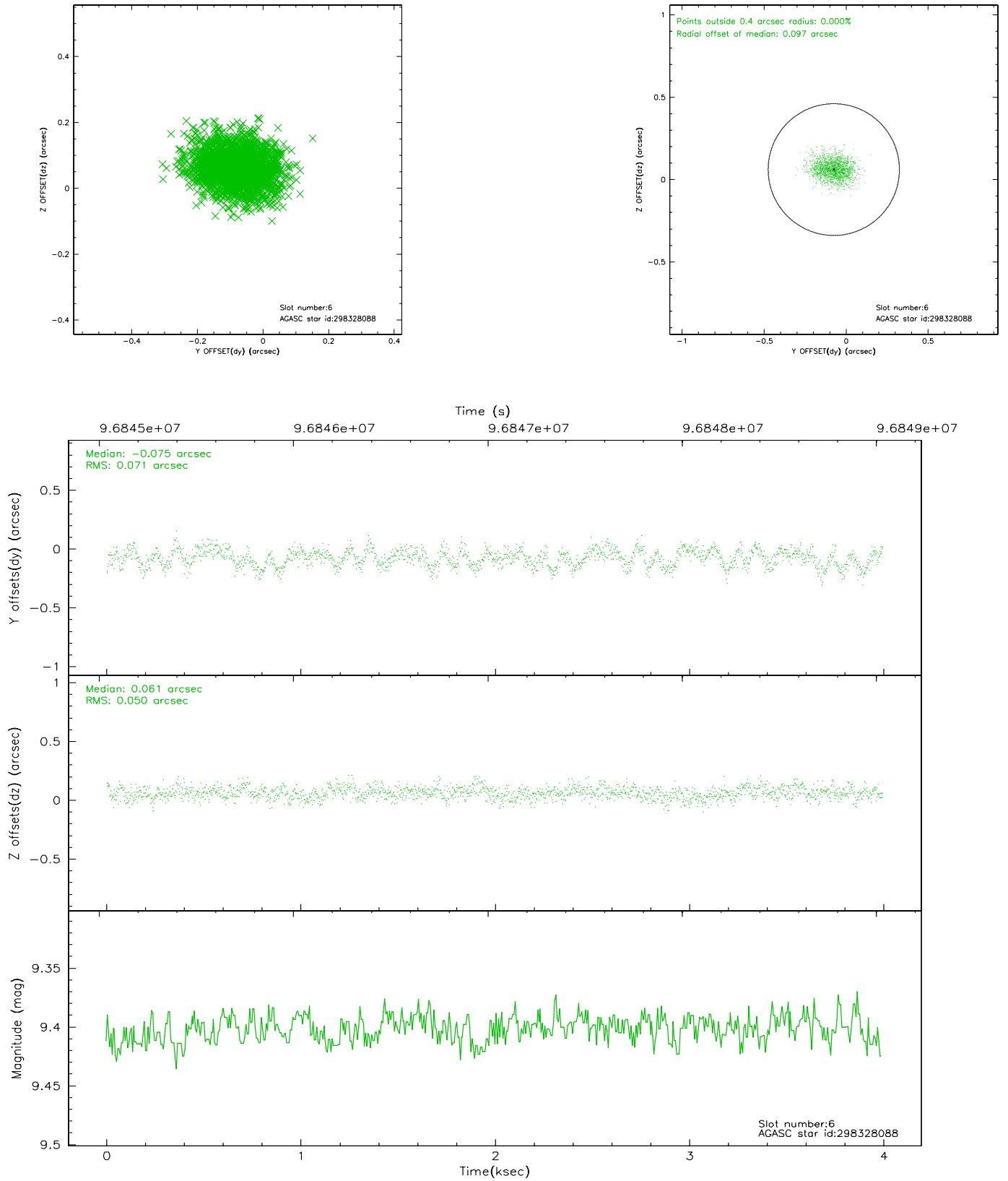
## 2.4.2 Slot 4



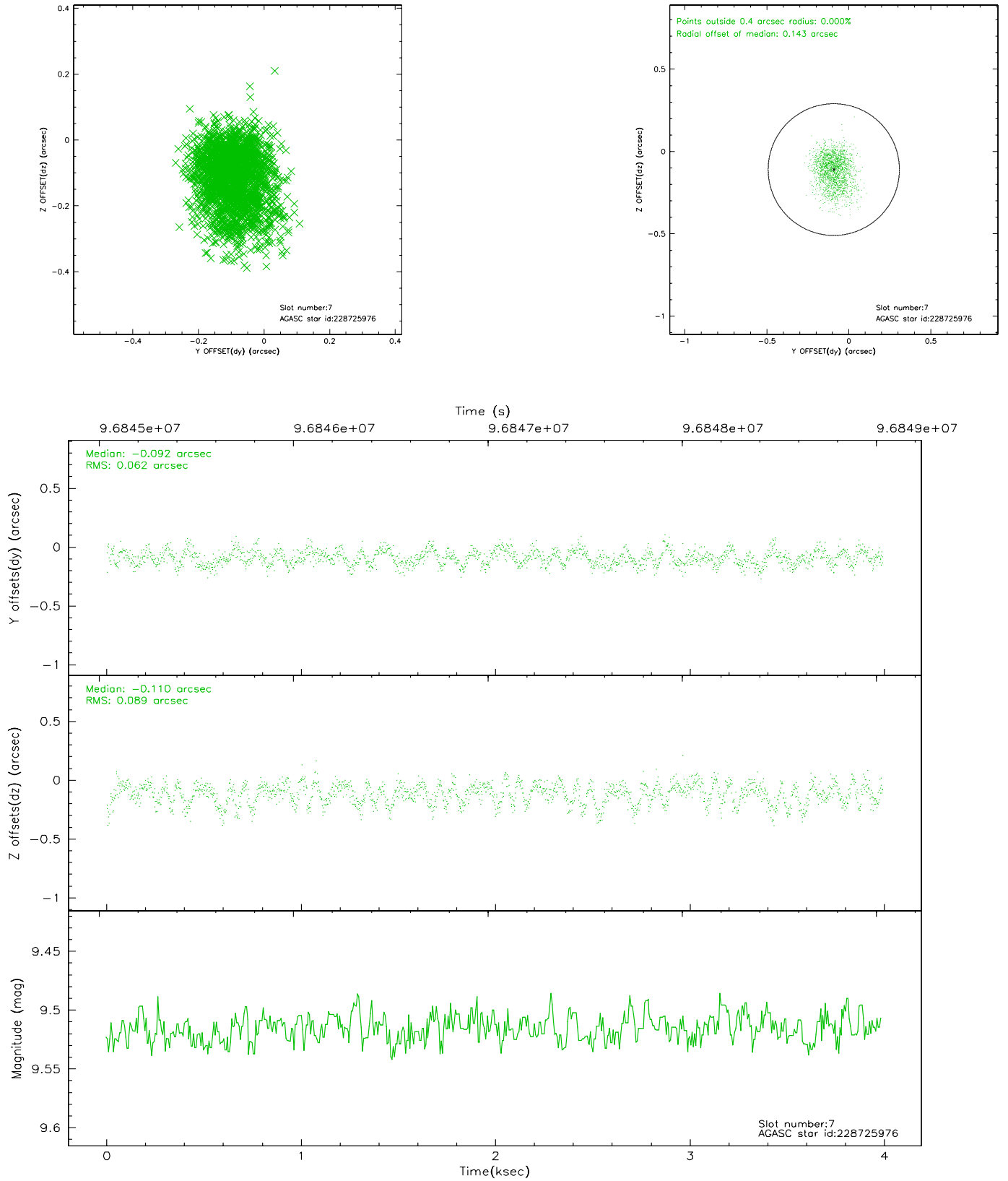
### 2.4.3 Slot 5



## 2.4.4 Slot 6

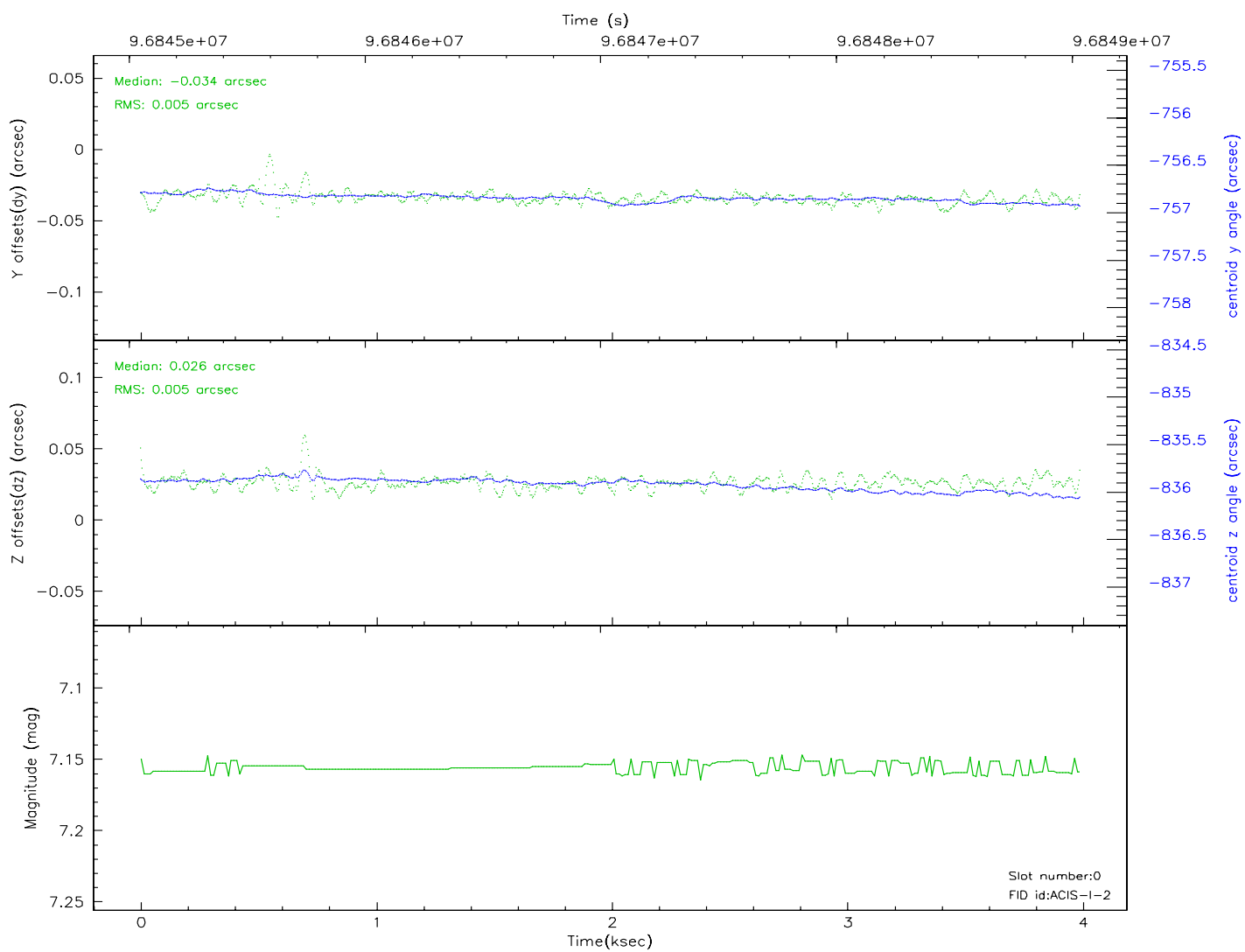
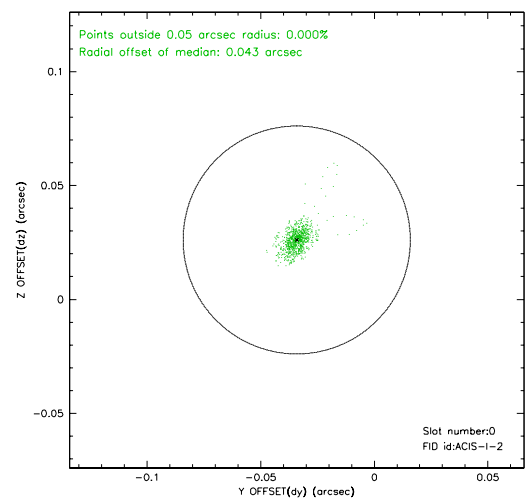
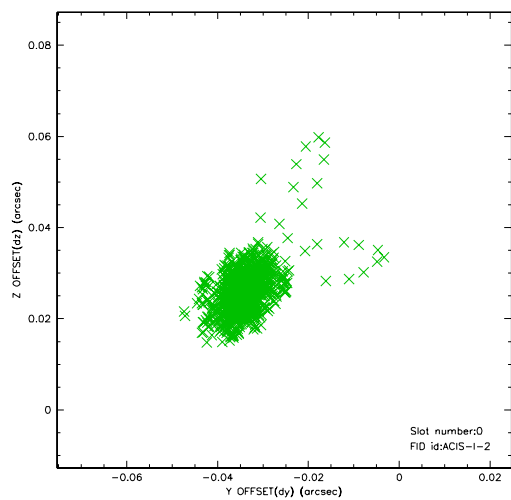


## 2.4.5 Slot 7

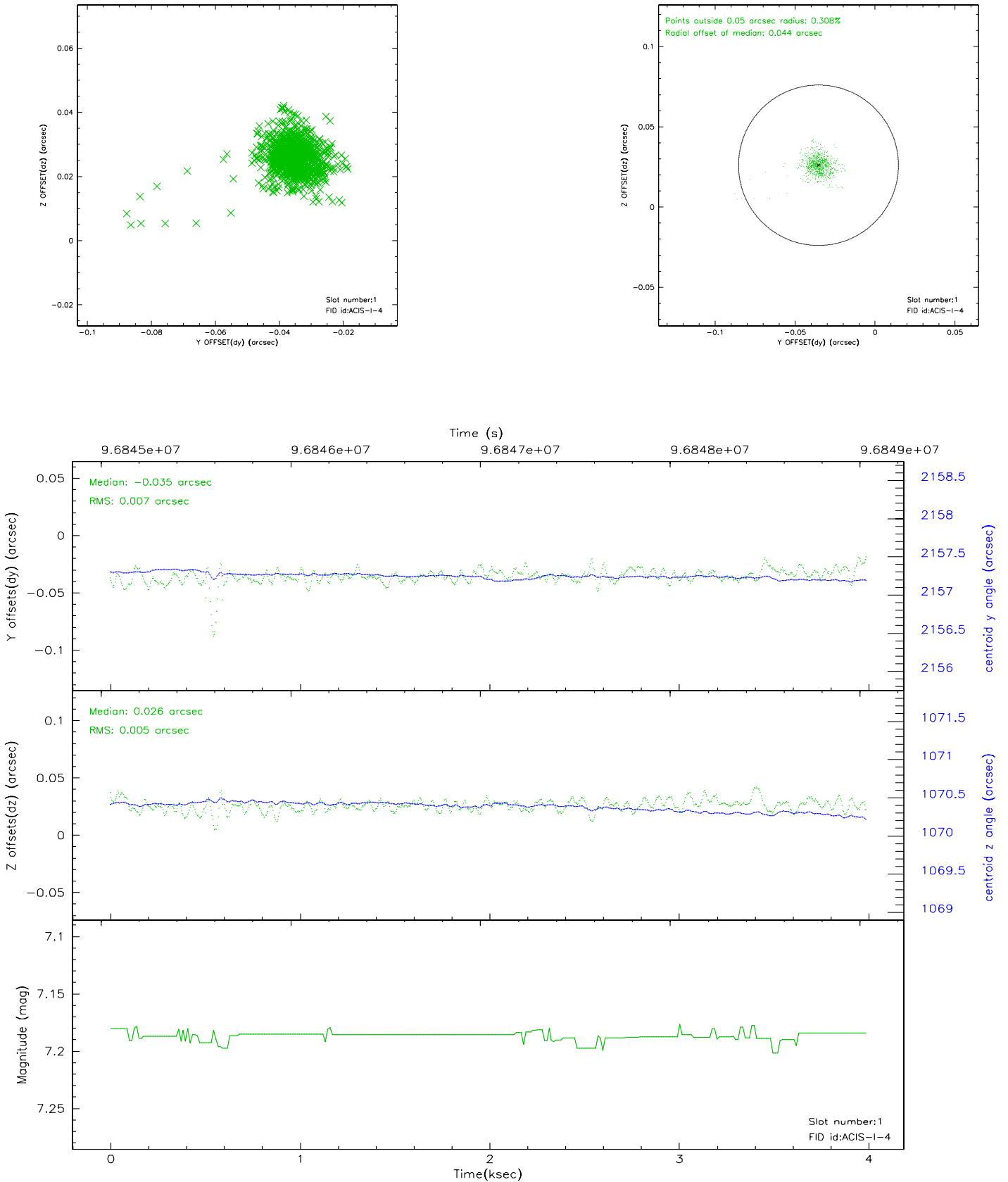


## 2.5 FID Slots

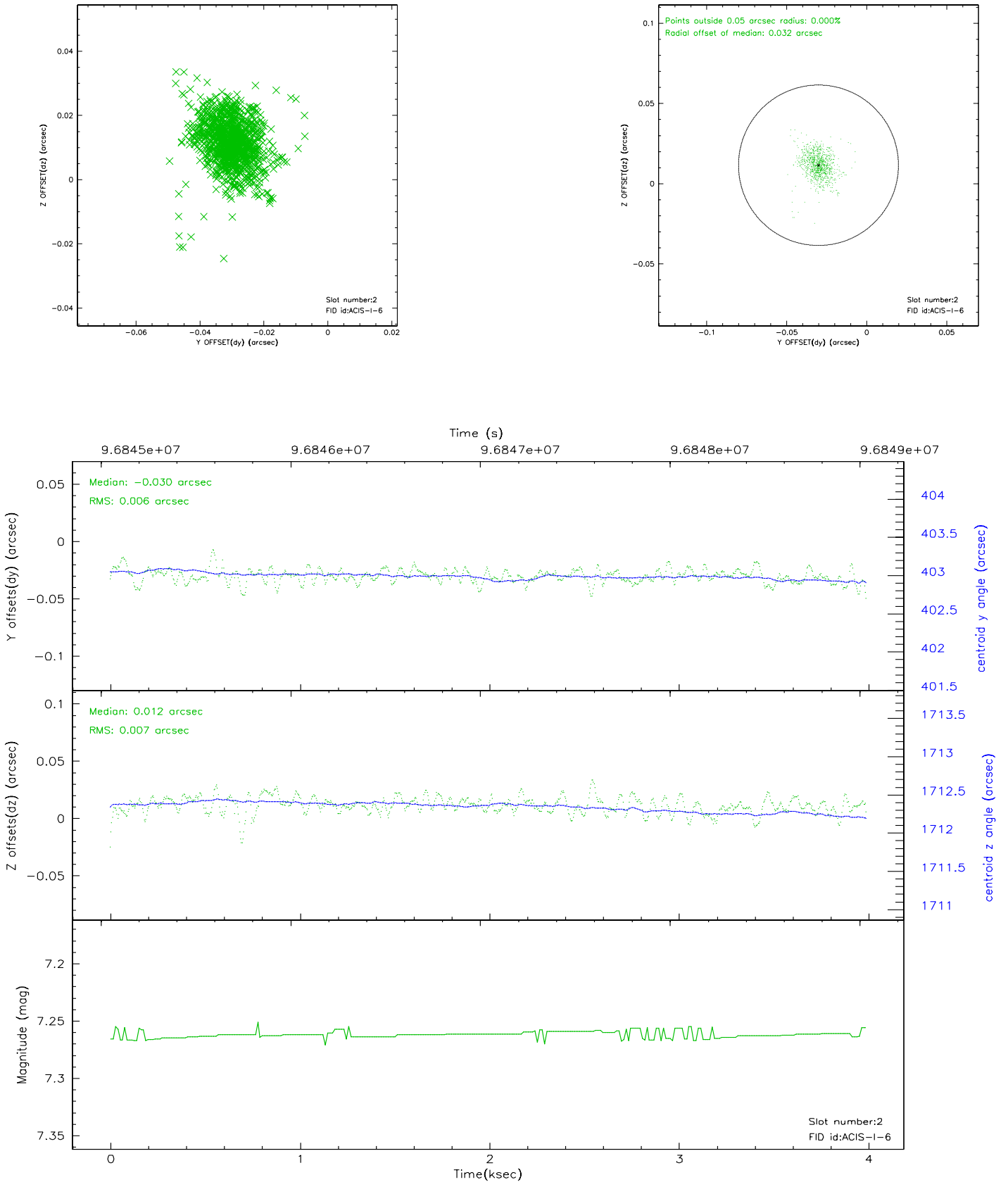
### 2.5.1 Slot 0



## 2.5.2 Slot 1



### 2.5.3 Slot 2





### 3 Point Sources

## A Summary

### A.1 Status

V&V Scientist	Jen Lauer
V&V Date (YYYY-MM-DD)	2006.11.06
V&V Edition	1
V&V Disposition and Status	OK
V&V Charge Time	3.644

### A.2 Comments