

V&V Reference Report

L2 ASCDS Version : 7.6.9

Observation 2102 - L2 Version 001
Chandra X-Ray Center

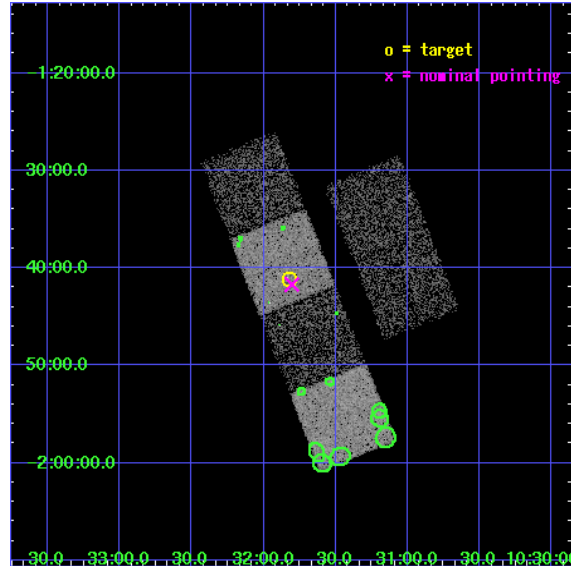
L2 Processing Date : Nov 23 2006

Contents

1	Front	2
2	OBI	3
2.1	OBI	3
2.1.1	Images	3
2.1.2	Bias	3
2.1.3	Parameters	4
2.1.4	Events	4
2.2	Compared Parameters	5
2.3	Aspect	6
2.4	Star Slots	9
2.4.1	Slot 3	9
2.4.2	Slot 4	10
2.4.3	Slot 5	11
2.4.4	Slot 6	12
2.4.5	Slot 7	13
2.5	FID Slots	14
2.5.1	Slot 0	14
2.5.2	Slot 1	15
2.5.3	Slot 2	16
3	Point Sources	17
A	Summary	18
A.1	Status	18
A.2	Comments	18

1 Front

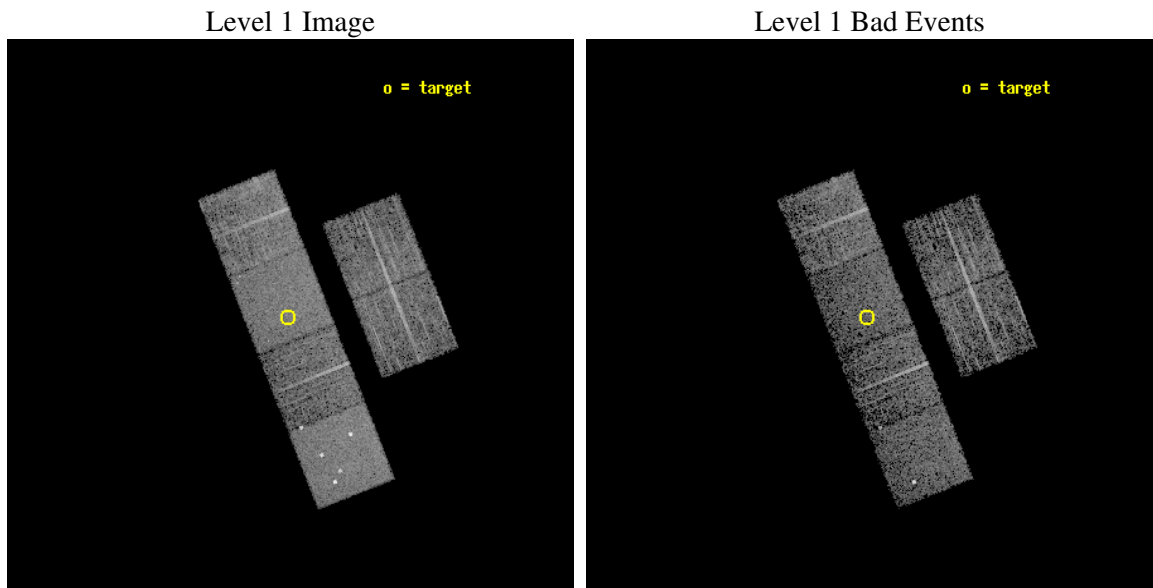
seq_num	700292
obs_id	2102
title	PUBLIC OBSERVATIONS OF A WELL-DEFINED SAMPLE OF BAL QSOS FROM THE LARGE BRIGHT QUASAR SURVEY: REMOVING THE BARRIERS
observer	Prof. William Brandt
object	LBQS 1029-0125
dtcycle	0
cycle	P
ra_targ	157.95625
dec_targ	-1.686556
ra_nom	157.95108942923
dec_nom	-1.6948624281965
roll_nom	248.43271177072
revision	2
ontime	4560.0000042468
livetime	4502.2585384907
ontime2	4560.0000042468
ontime3	4560.0000042468
ontime5	4560.0000042468
ontime6	4560.0000042468
ontime7	4560.0000042468
ontime8	4556.7590639293
l2events	41846



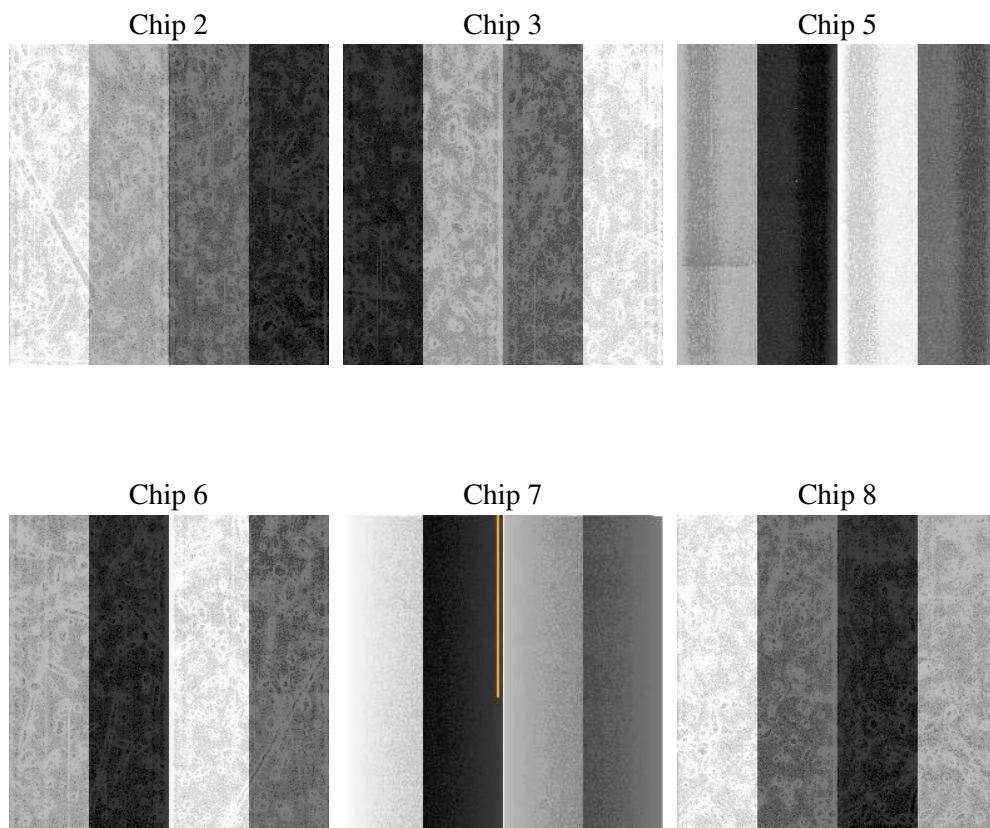
2 OBI

2.1 OBI

2.1.1 Images



2.1.2 Bias



2.1.3 Parameters

obi_num	0
ascdsver	7.6.9
caldsver	3.2.4
date	2006-11-23T05:43:21
revision	2

sched_exp_time	4800.000000
ontime	4563.3262474835
ontime2	4563.3262474835
ontime3	4563.326217562
ontime5	4563.3262474835
ontime6	4563.3262474835
ontime7	4563.3262474835
ontime8	4560.0851775557
l1events	202468

2.1.4 Events

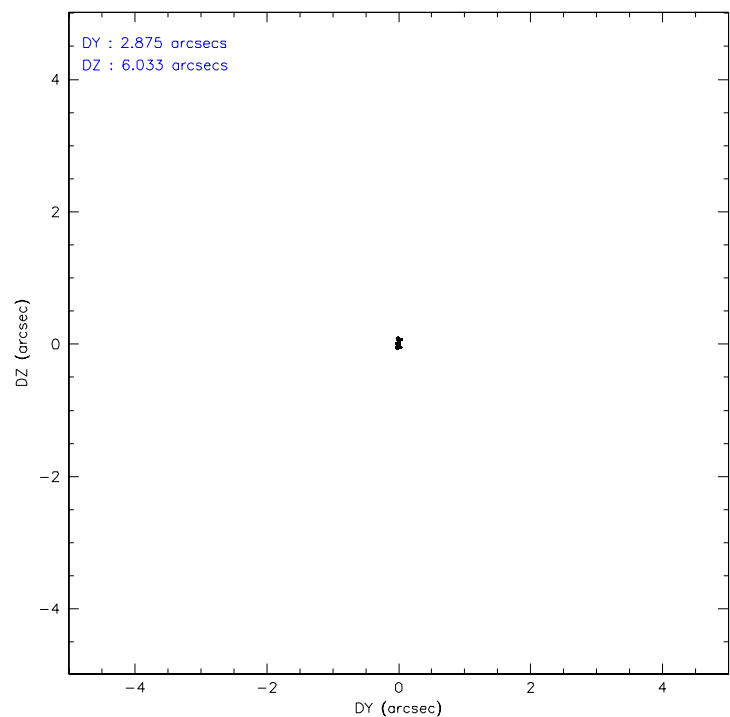
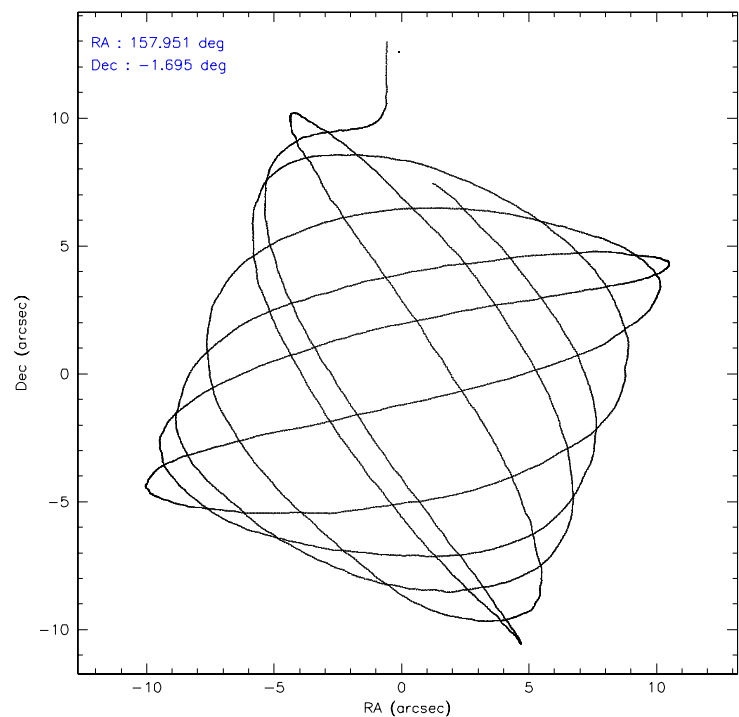
	ccd 2	ccd 3	ccd 5	ccd 6	ccd 7	ccd 8
level 1 events	29004	28680	43442	27675	36611	37056
rejected events	25821	25614	23351	24362	22133	30403
rejected %	89%	89%	53%	88%	60%	82%

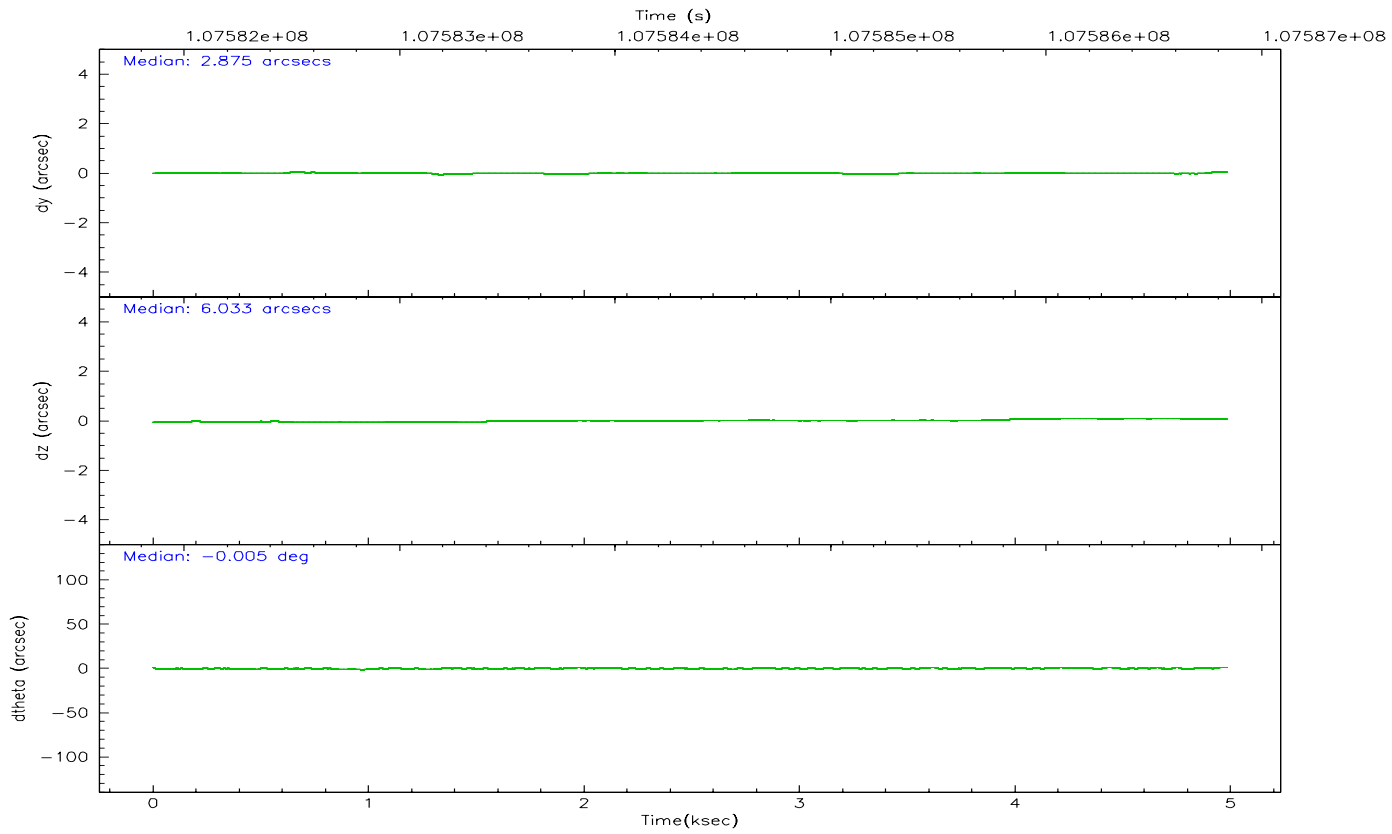
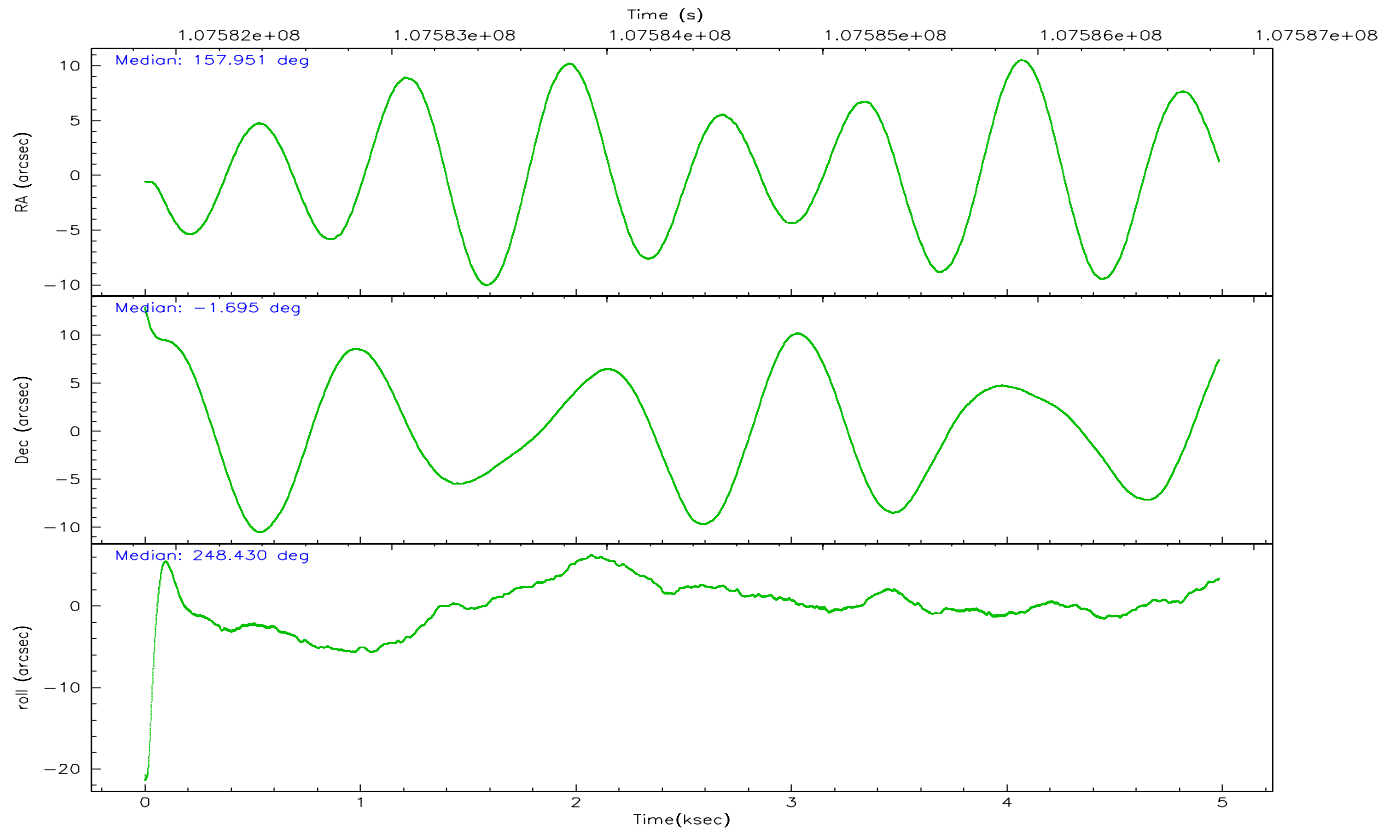
	ccd 2	ccd 3	ccd 5	ccd 6	ccd 7	ccd 8
grade 0 events	1376	1321	3475	1404	1001	2125
	4%	4%	7%	5%	2%	5%
grade 1 events	12	14	108	13	16	23
	0%	0%	0%	0%	0%	0%
grade 2 events	696	590	5671	684	3492	1429
	2%	2%	13%	2%	9%	3%
grade 3 events	273	301	439	284	807	663
	0%	1%	1%	1%	2%	1%
grade 4 events	293	302	416	313	818	631
	1%	1%	0%	1%	2%	1%
grade 5 events	956	1074	2476	1176	2498	1460
	3%	3%	5%	4%	6%	3%
grade 6 events	548	553	10104	631	8367	1808
	1%	1%	23%	2%	22%	4%
grade 7 events	24850	24525	20753	23170	19612	28917
	85%	85%	47%	83%	53%	78%

2.2 Compared Parameters

Parameter	Planned	Actual	Parameter	Planned	Actual
Instrument	ACIS	ACIS	Obspar format version number	6	6
Detector	ACIS-235678	ACIS-235678	Obspar file type	PREDICTED	ACTUAL
Grating	NONE	NONE	Obspar update status	NONE	UPDATED
Data mode	FAINT	FAINT	Number of optional ACIS chips dropped	0	0
Observation mode	POINTING	POINTING	On-chip summing requested	N	N
Pointing RA	157.946815	157.9510894292327	Subarray requested	NONE	NONE
Pointing Dec	-1.667907	-1.694862428196523	Alternating exposures requested	N	N
Pointing Roll	248.276034	248.4327117707182	Primary exposure time	0.000000	3.2
SIM focus pos (mm)	-0.684267	-0.6828225247311905			
SIM defocus (mm)	0	0.001444936568705701			
SIM translation stage pos (mm)	-190.132523	-190.1400660498719			
SIM translation stage offset (mm)	0	0.00754346686406393			
Observation start time	107582042.184000	107581261.8994			
Observation start date	2001-05-30T03:52:58	2001-05-30T03:41:01			
Observation end time	107586842.184000	107587629.71215			
Observation end date	2001-05-30T05:12:58	2001-05-30T05:27:09			
Read mode	TIMED	TIMED			

2.3 Aspect



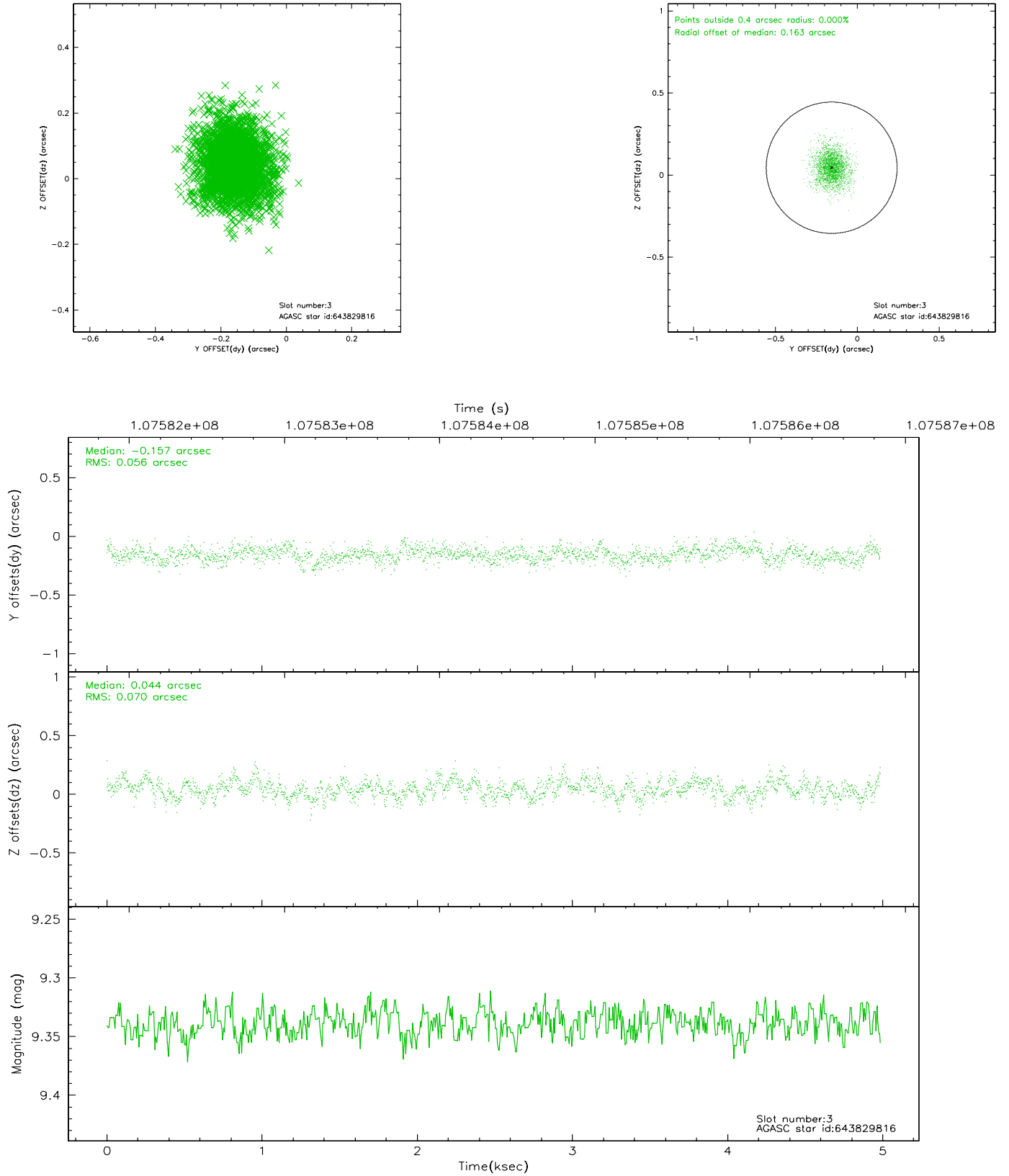


Slot Statistics

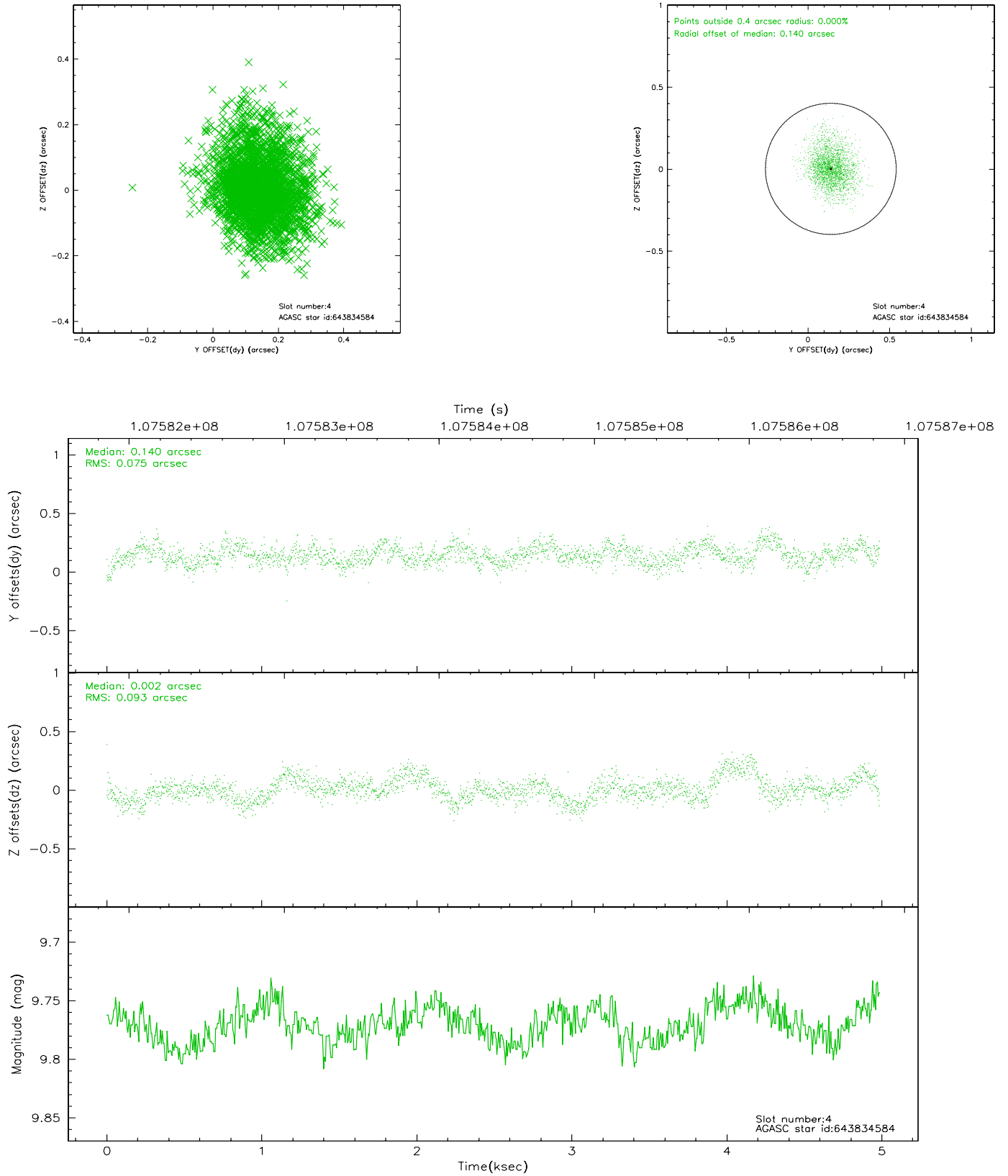
slot	status	id	mag	n_pts	med_dy	med_dz	dr1	dr2	ra	dec	mean_y	mean_z
0	FID	ACIS-S-2	7.11	1216	-0.013	0.037	0.006	0.011	0.000000	0.000000	-755.49	-1727.16
1	FID	ACIS-S-4	7.20	1216	-0.087	-0.003	0.005	0.008	0.000000	0.000000	2157.12	180.09
2	FID	ACIS-S-5	7.23	1217	0.069	-0.024	0.006	0.010	0.000000	0.000000	-1806.72	175.05
3	GUIDE	643829816	9.34	2431	-0.157	0.044	0.093	0.159	158.387003	-1.168890	-2254.20	806.59
4	GUIDE	643834584	9.77	2433	0.140	0.002	0.127	0.211	158.048553	-1.926316	729.07	684.37
5	GUIDE	643833752	10.01	2430	0.095	0.002	0.103	0.168	158.016488	-1.875342	602.50	509.23
6	GUIDE	643832120	9.91	2424	0.066	0.061	0.133	0.208	157.875260	-1.772262	445.91	-100.10
7	GUIDE	643827984	8.93	2432	-0.149	-0.119	0.072	0.116	157.876198	-1.033797	-2025.36	-1081.62

2.4 Star Slots

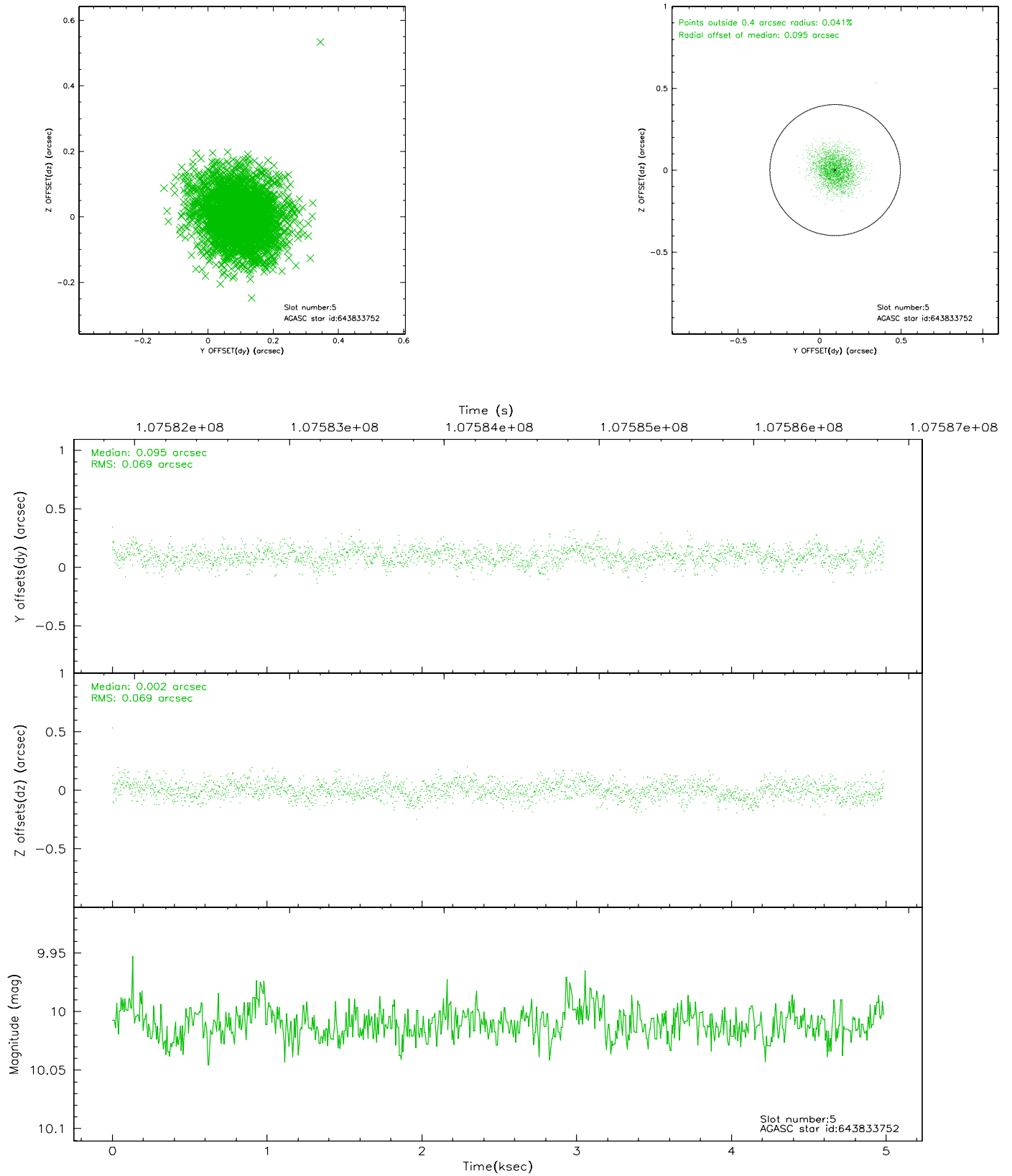
2.4.1 Slot 3



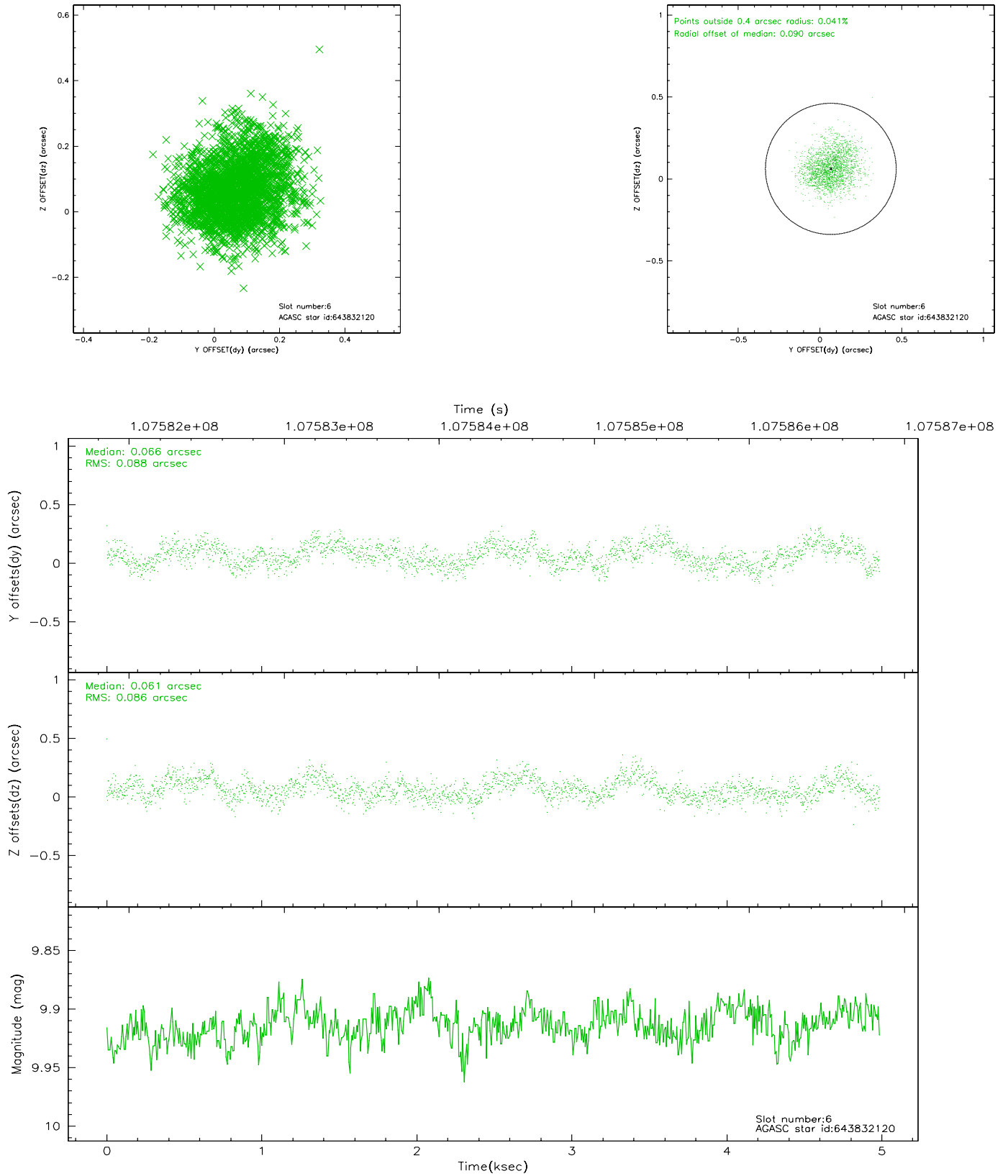
2.4.2 Slot 4



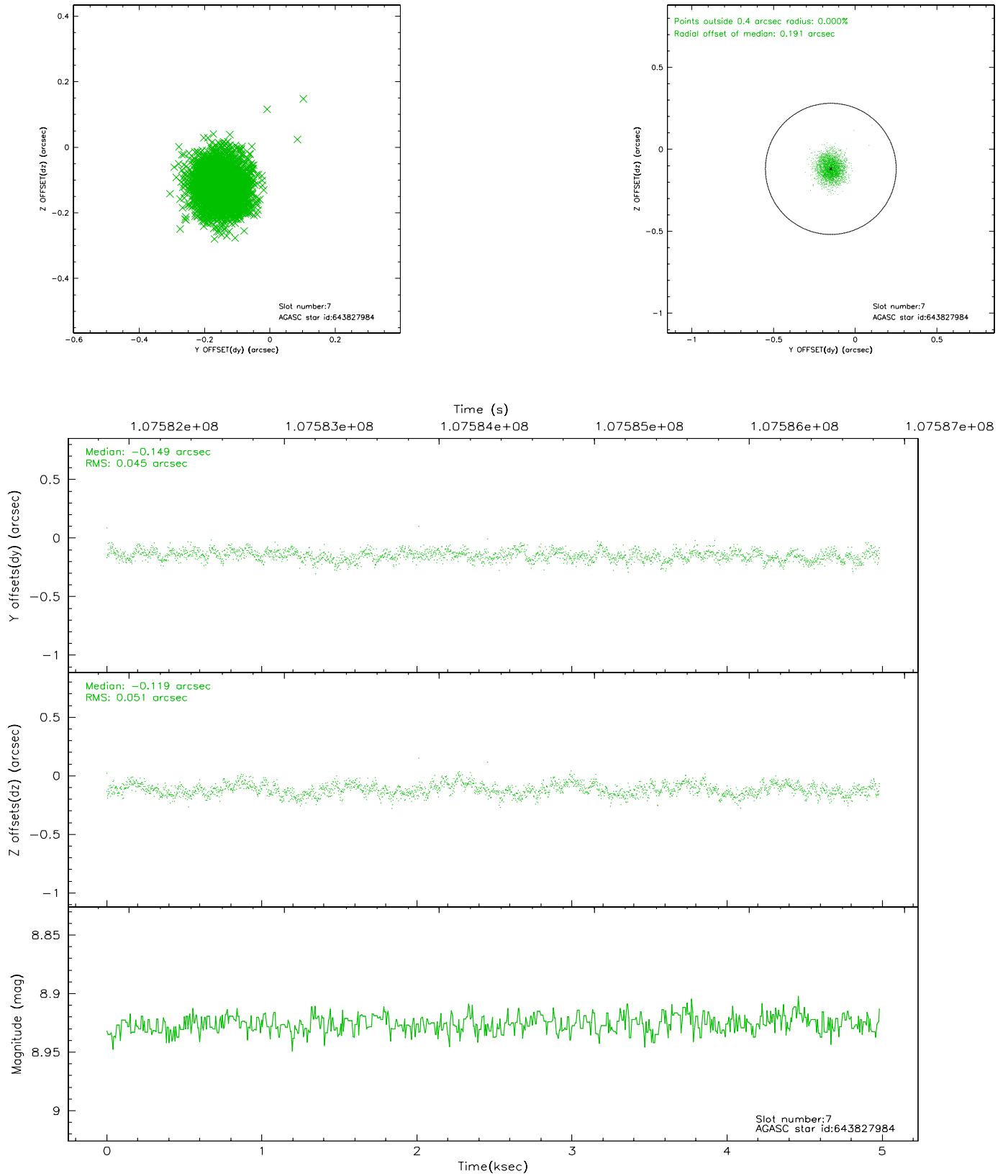
2.4.3 Slot 5



2.4.4 Slot 6

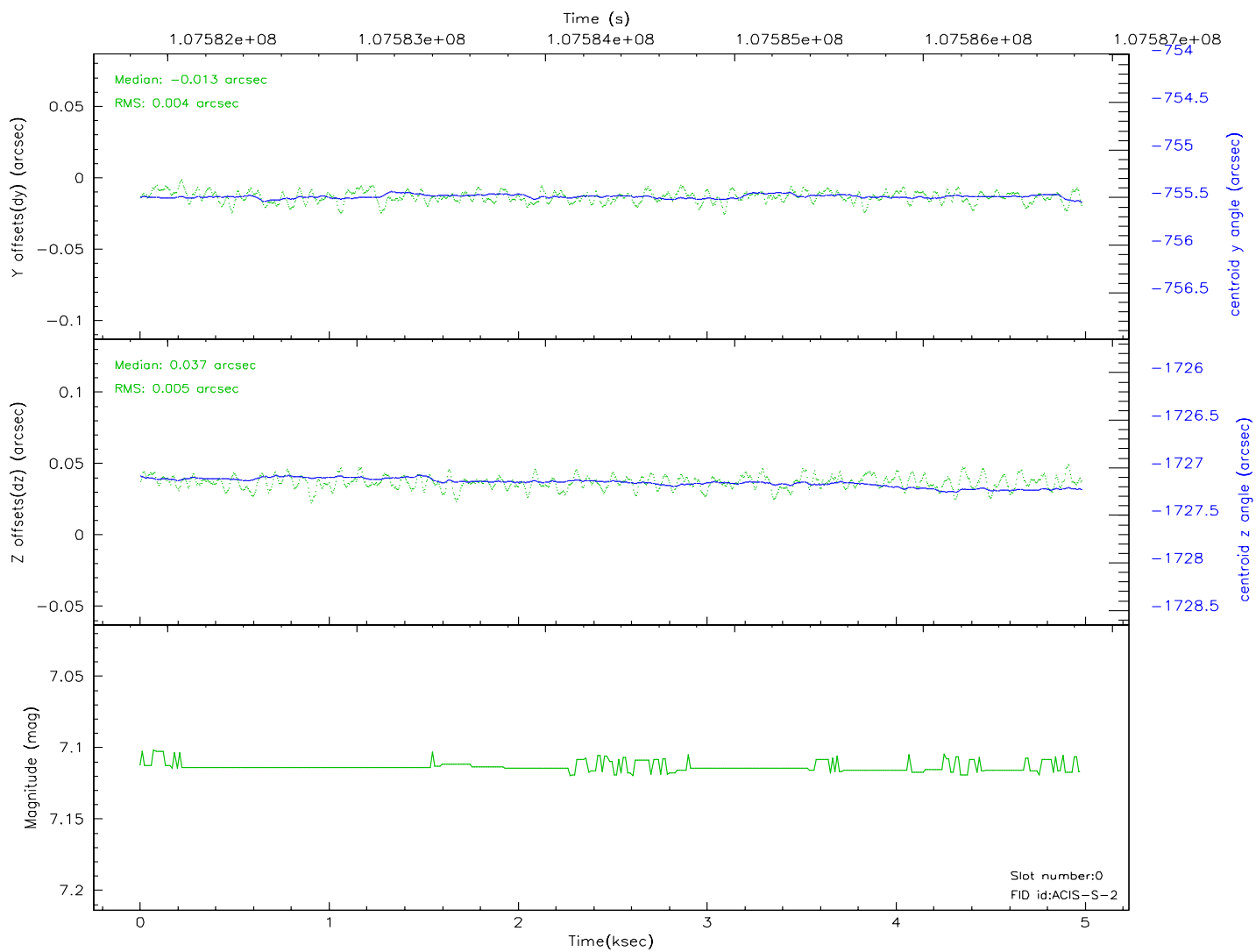
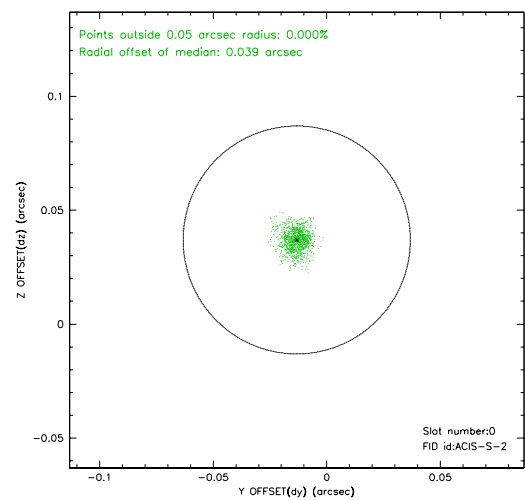
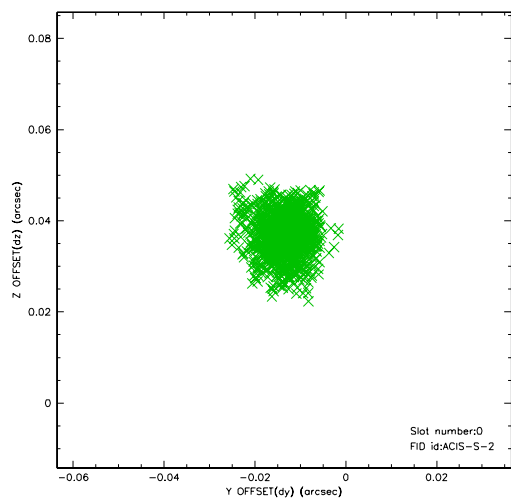


2.4.5 Slot 7

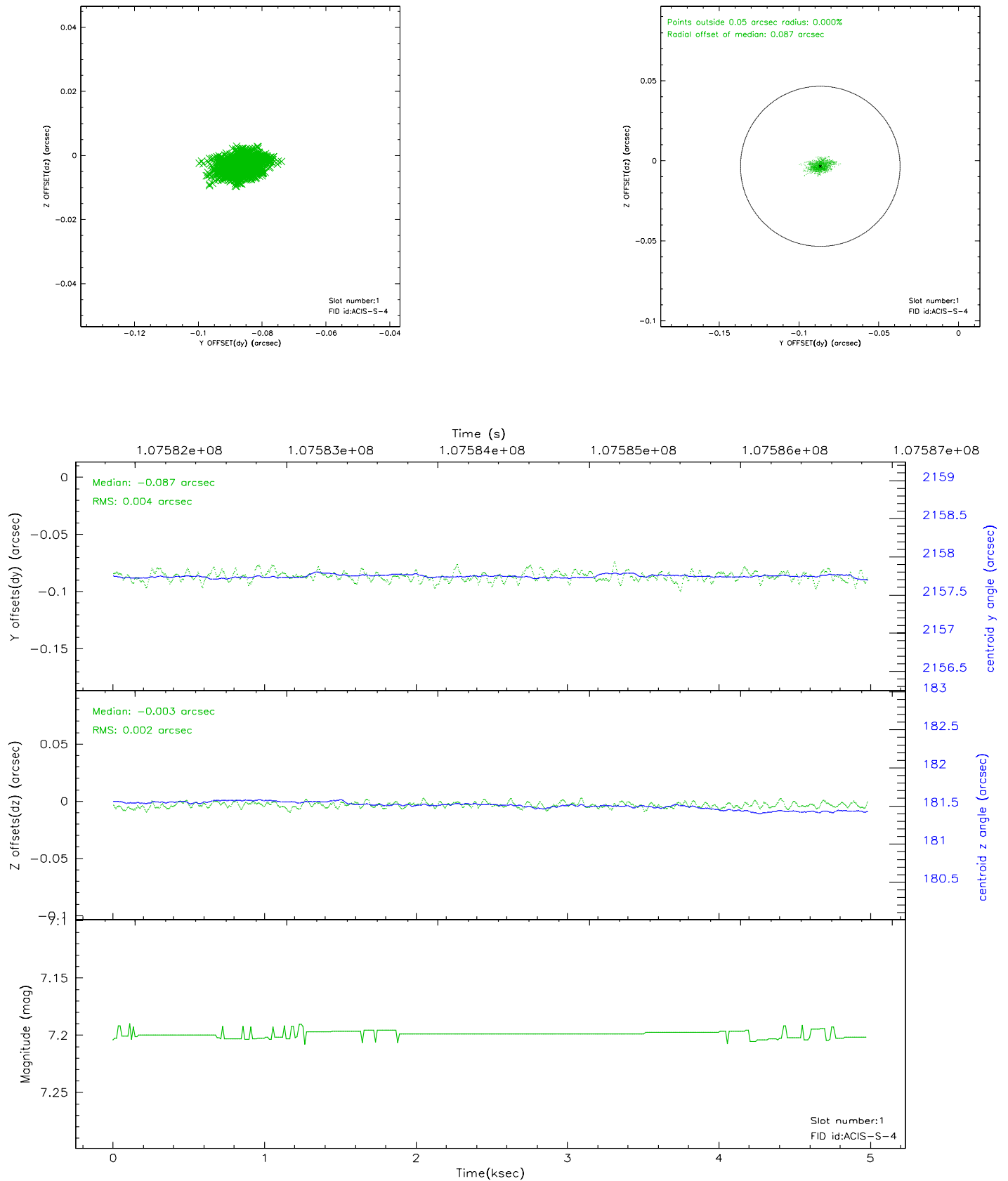


2.5 FID Slots

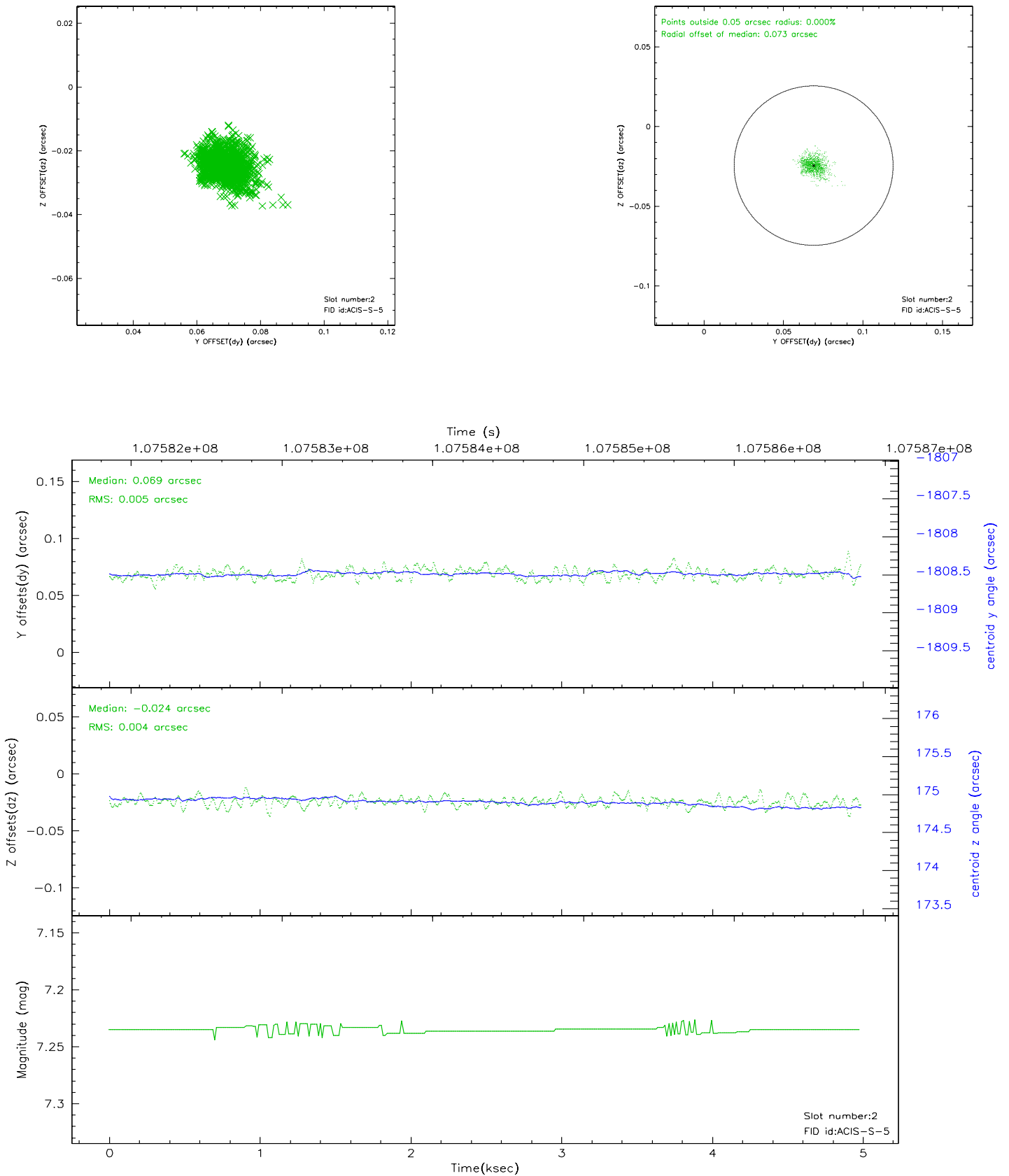
2.5.1 Slot 0



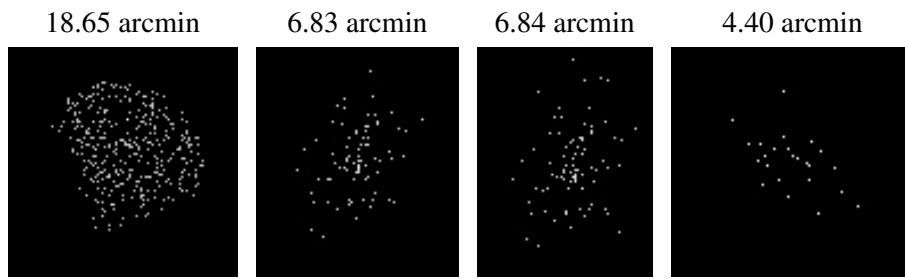
2.5.2 Slot 1



2.5.3 Slot 2



3 Point Sources



A Summary

A.1 Status

V&V Scientist	Jen Lauer
V&V Date (YYYY-MM-DD)	2006.11.24
V&V Edition	1
V&V Disposition and Status	OK
V&V Charge Time	4.6

A.2 Comments