

V&V Reference Report

L2 ASCDS Version : 7.6.9

Observation 2062 - L2 Version 001
Chandra X-Ray Center

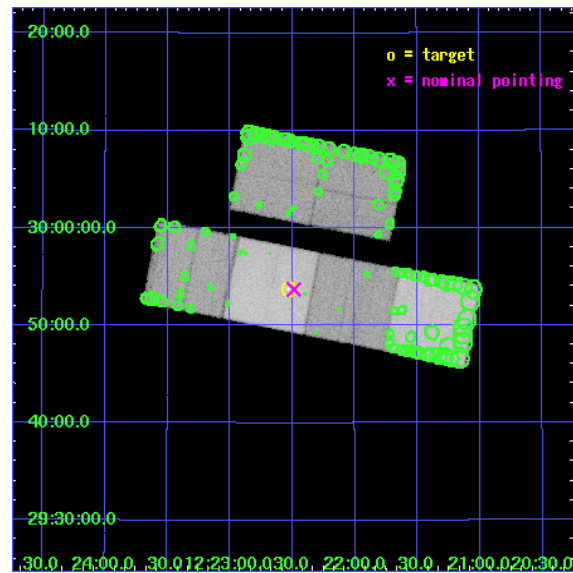
L2 Processing Date : Nov 13 2006

Contents

1	Front	2
2	OBI	3
2.1	OBI	3
2.1.1	Images	3
2.1.2	Bias	3
2.1.3	Parameters	4
2.1.4	Events	4
2.2	Compared Parameters	5
2.3	Aspect	6
2.4	Star Slots	9
2.4.1	Slot 4	9
2.4.2	Slot 5	10
2.4.3	Slot 7	11
2.5	FID Slots	12
2.5.1	Slot 0	12
2.5.2	Slot 1	13
2.5.3	Slot 2	14
3	Point Sources	15
A	Summary	16
A.1	Status	16
A.2	Comments	16

1 Front

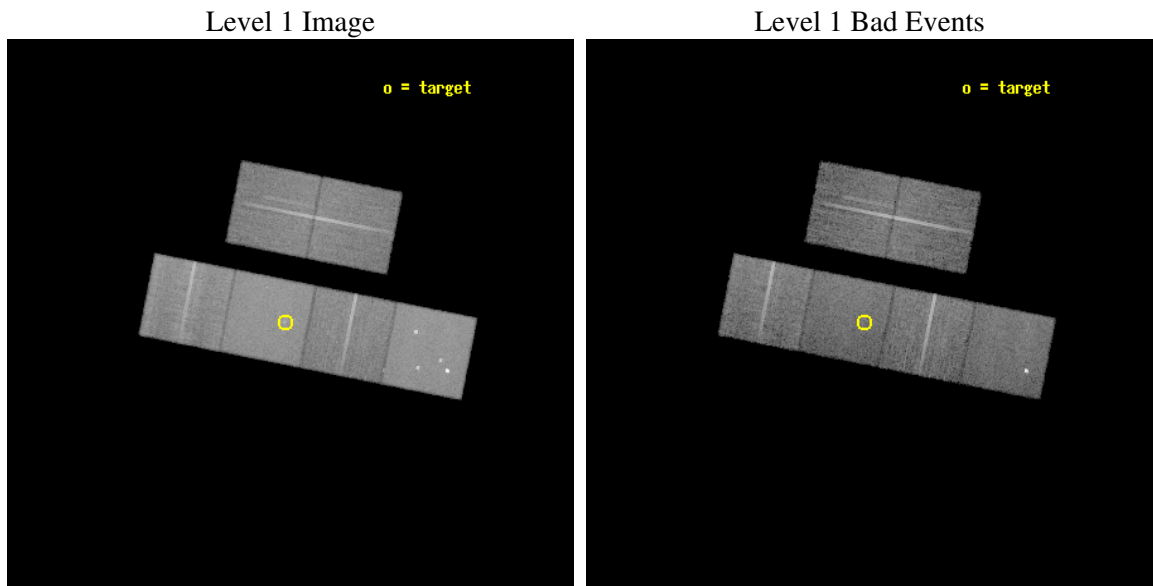
seq_num	600196
obs_id	2062
title	THE X-RAY POINT SOURCE POPULATION IN SPIRAL GALAXIES
observer	Dr. Andrea Prestwich
object	NGC 4314
dtcycle	0
cycle	P
ra_targ	185.633333
dec_targ	29.895278
ra_nom	185.62207498507
dec_nom	29.895143276235
roll_nom	191.20227536615
revision	2
ontime	16279.428831875
livetime	16073.288901711
ontime2	15647.434354454
ontime3	15670.12162438
ontime5	16353.971087679
ontime6	15676.603654534
ontime7	16279.428831875
ontime8	15689.567505613
l2events	479495



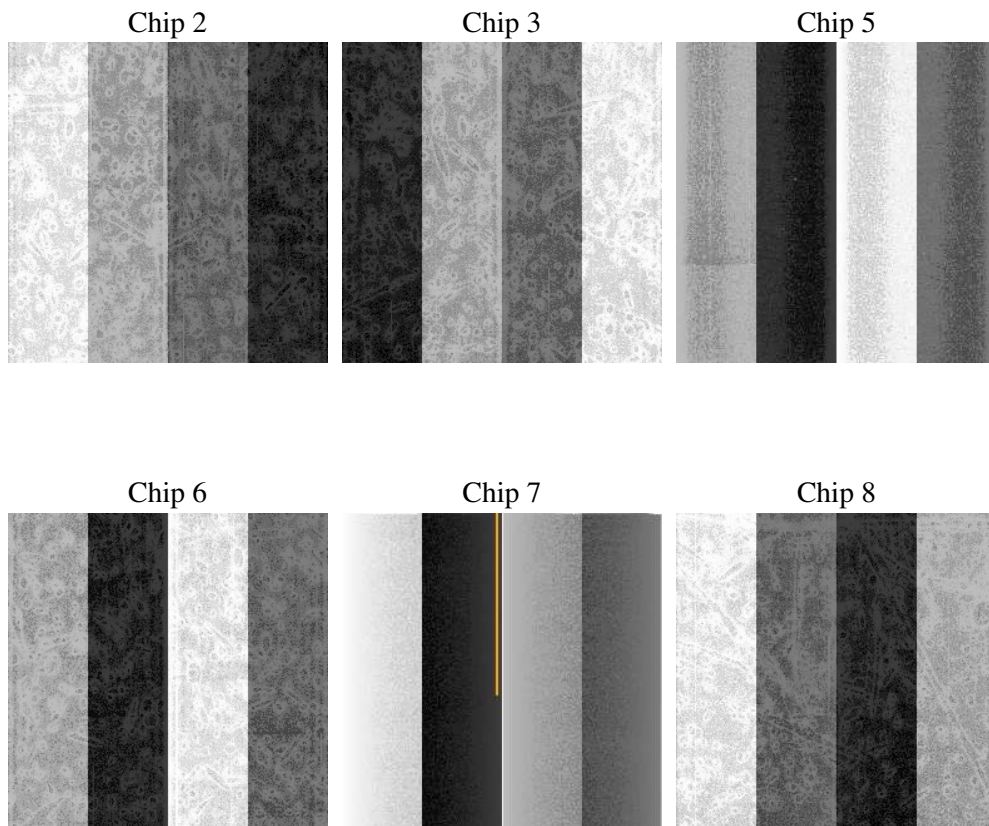
2 OBI

2.1 OBI

2.1.1 Images



2.1.2 Bias



2.1.3 Parameters

obi_num	0
ascdsver	7.6.9
caldsver	3.2.4
date	2006-11-13T14:04:24
revision	2

sched_exp_time	16500.000000
ontime	16282.79426384
ontime2	15650.799766481
ontime3	15673.487036407
ontime5	16357.336519644
ontime6	15679.96906656
ontime7	16282.79426384
ontime8	15692.932937577
l1events	1128506

2.1.4 Events

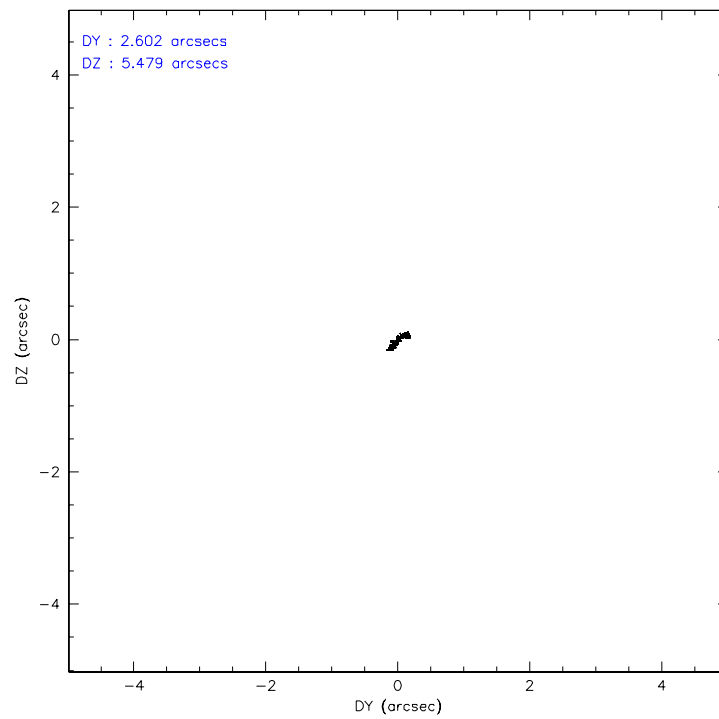
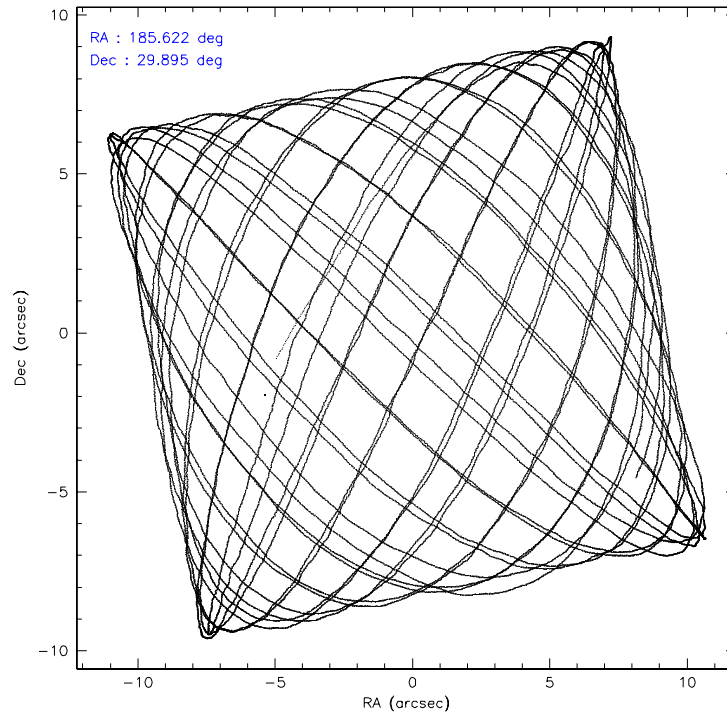
	ccd 2	ccd 3	ccd 5	ccd 6	ccd 7	ccd 8
level 1 events	157740	156278	227917	167788	217344	201439
rejected events	101850	98381	91536	105275	87594	115216
rejected %	64%	62%	40%	62%	40%	57%

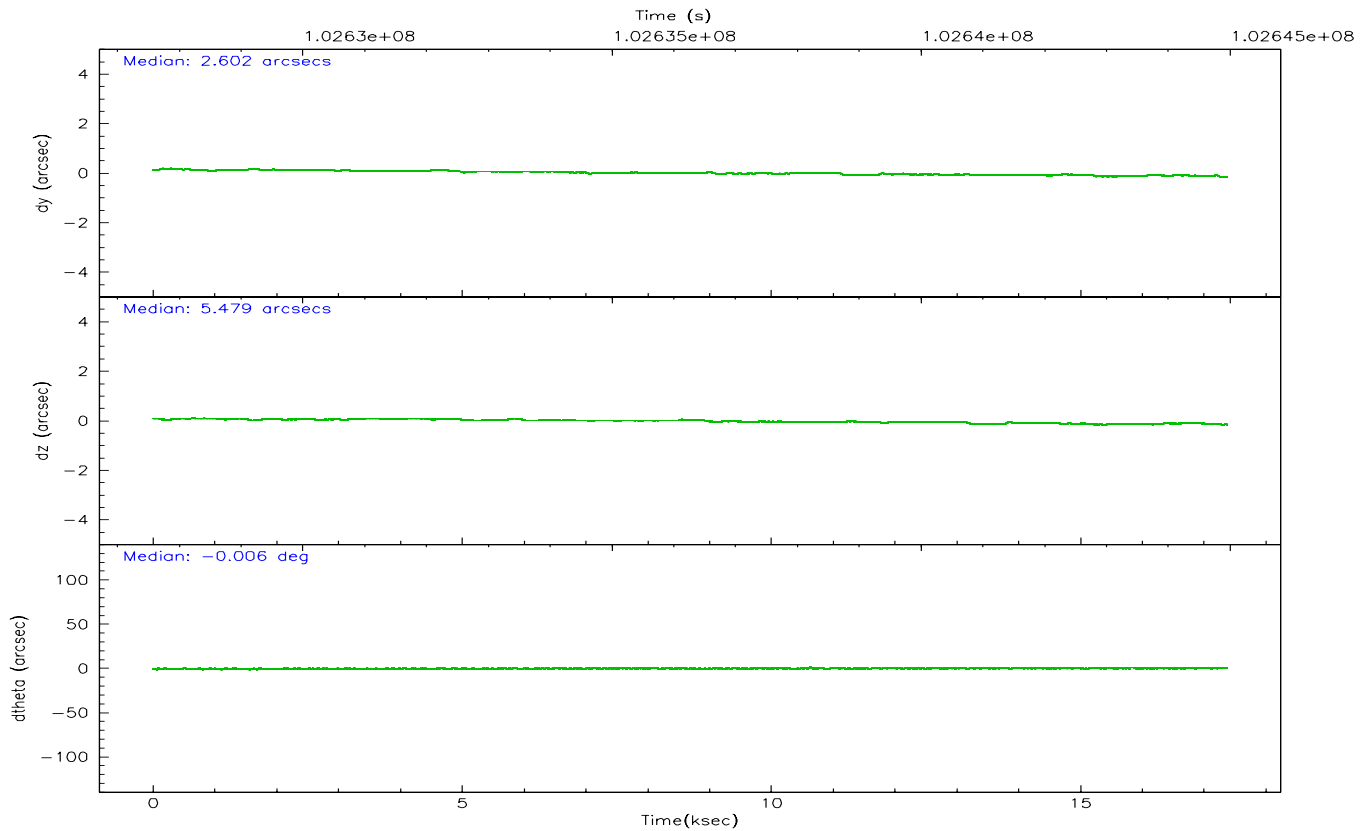
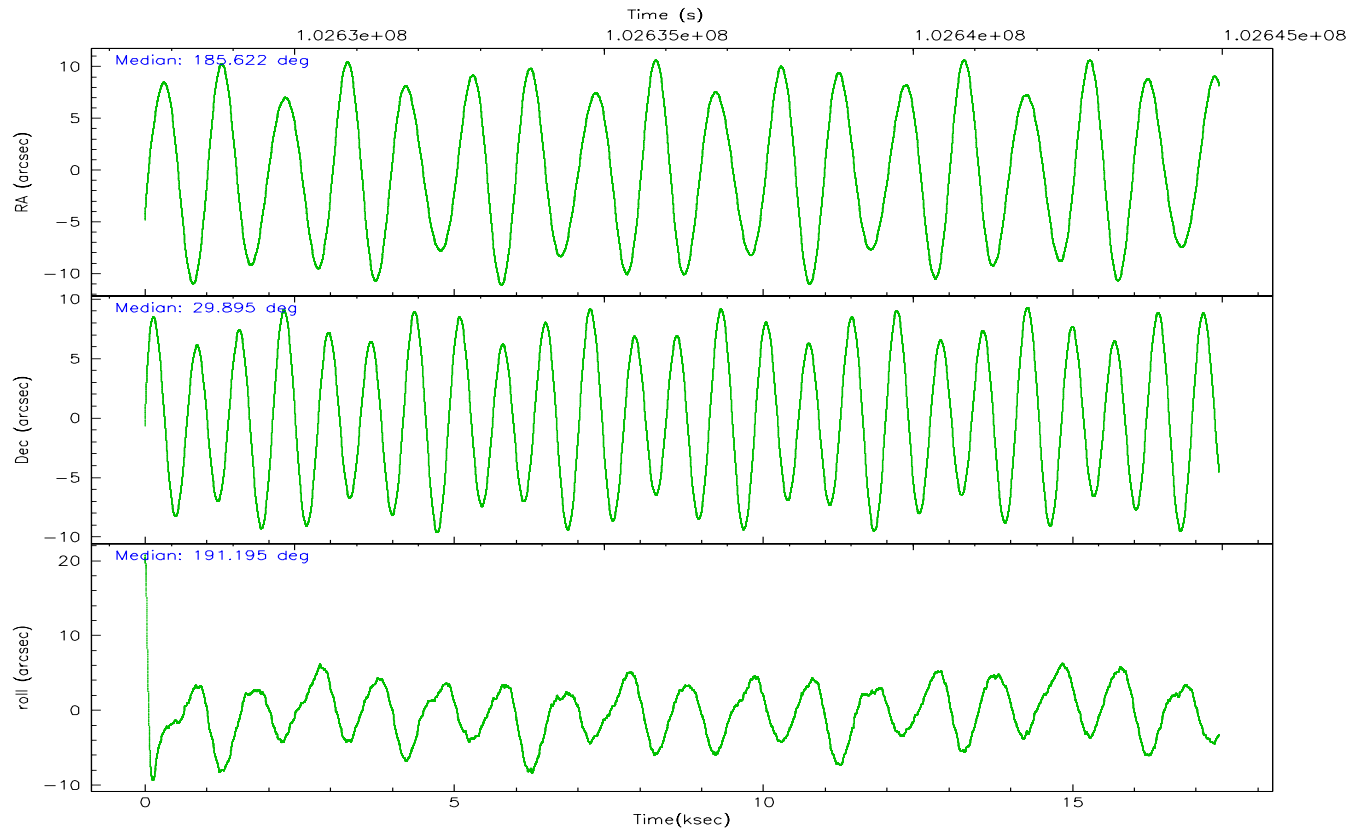
	ccd 2	ccd 3	ccd 5	ccd 6	ccd 7	ccd 8
grade 0 events	21216	22105	12569	22375	15120	28952
	13%	14%	5%	13%	6%	14%
grade 1 events	190	165	136	186	92	235
	0%	0%	0%	0%	0%	0%
grade 2 events	10080	10265	55448	10230	38029	15607
	6%	6%	24%	6%	17%	7%
grade 3 events	3818	4202	2871	3997	6523	7460
	2%	2%	1%	2%	3%	3%
grade 4 events	3906	4028	2858	4107	6587	7135
	2%	2%	1%	2%	3%	3%
grade 5 events	3714	3945	8217	4301	9423	5642
	2%	2%	3%	2%	4%	2%
grade 6 events	16874	17304	62653	21809	63502	27076
	10%	11%	27%	12%	29%	13%
grade 7 events	97942	94264	83165	100783	78068	109332
	62%	60%	36%	60%	35%	54%

2.2 Compared Parameters

Parameter	Planned	Actual	Parameter	Planned	Actual
Instrument	ACIS	ACIS	Obspar format version number	6	6
Detector	ACIS-235678	ACIS-235678	Obspar file type	PREDICTED	ACTUAL
Grating	NONE	NONE	Obspar update status	NONE	UPDATED
Data mode	FAINT	FAINT	Number of optional ACIS chips dropped	0	0
Observation mode	POINTING	POINTING	On-chip summing requested	N	N
Pointing RA	185.645537	185.6220749850696	Subarray requested	NONE	NONE
Pointing Dec	29.913309	29.89514327623476	Alternating exposures requested	N	N
Pointing Roll	191.033932	191.2022753661529	Primary exposure time	0.000000	3.2
SIM focus pos (mm)	-0.684267	-0.6828225247311905			
SIM defocus (mm)	0	0.001444936568705701			
SIM translation stage pos (mm)	-190.132523	-190.1400660498719			
SIM translation stage offset (mm)	0	0.00754346686406393			
Observation start time	102628449.184000	102627146.63208			
Observation start date	2001-04-02T19:53:05	2001-04-02T19:32:26			
Observation end time	102644949.184000	102645323.47028			
Observation end date	2001-04-03T00:28:05	2001-04-03T00:35:23			
Read mode	TIMED	TIMED			

2.3 Aspect



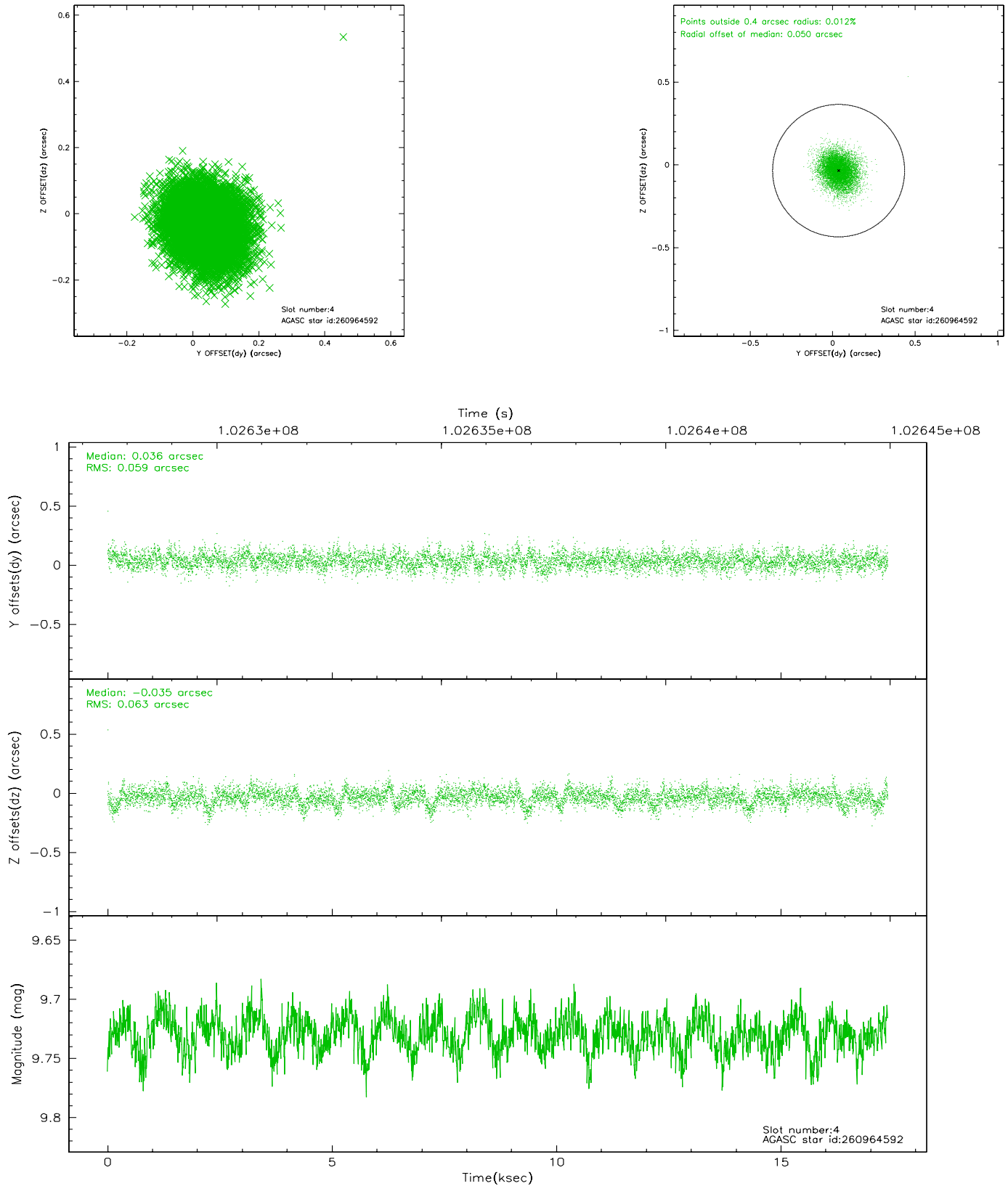


Slot Statistics

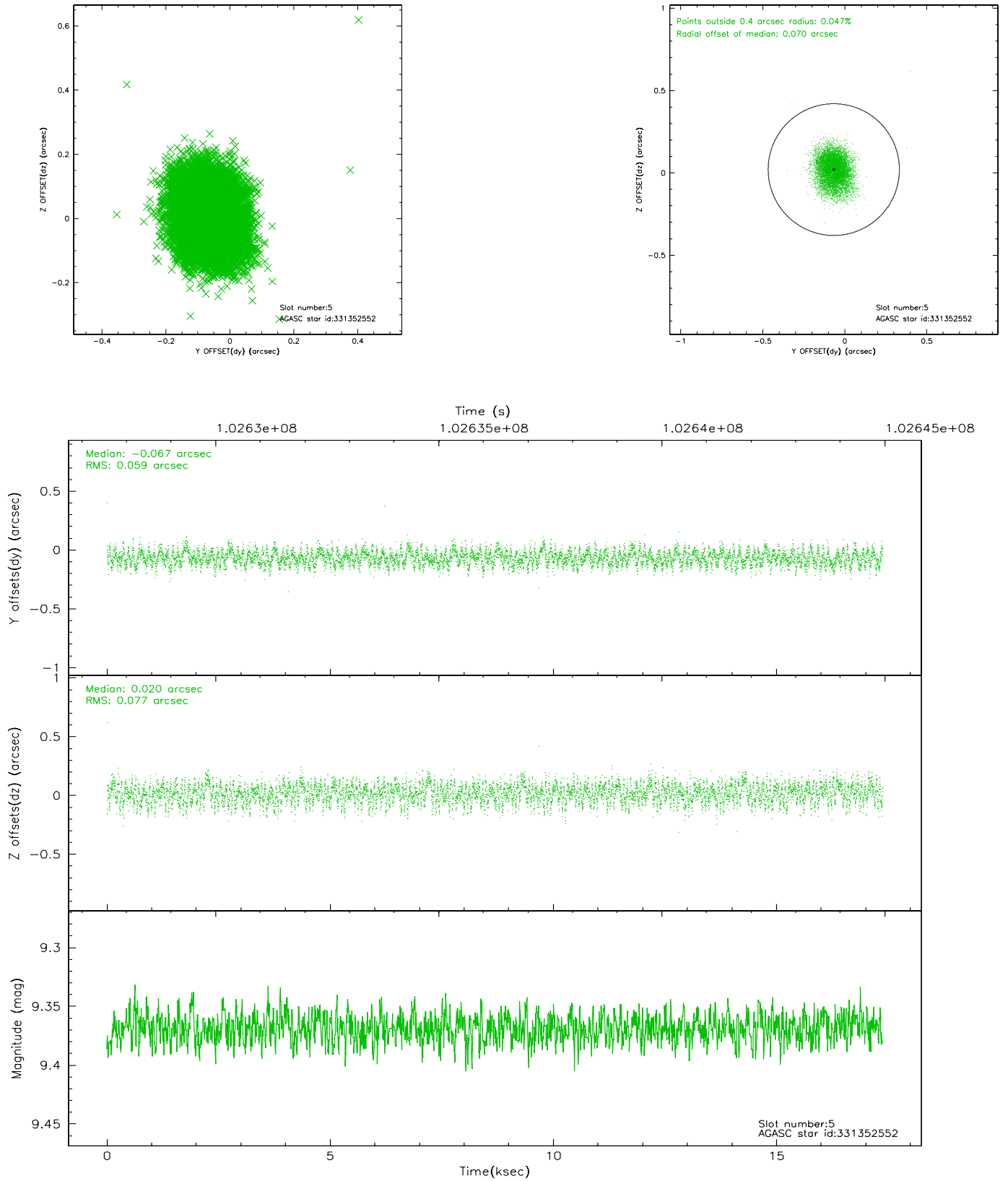
slot	status	id	mag	n_pts	med_dy	med_dz	dr1	dr2	ra	dec	mean_y	mean_z
0	FID	ACIS-S-2	7.11	4239	-0.026	0.018	0.007	0.013	0.000000	0.000000	-755.22	-1726.59
1	FID	ACIS-S-4	7.20	4239	-0.061	0.008	0.005	0.009	0.000000	0.000000	2157.86	181.71
2	FID	ACIS-S-5	7.24	4239	0.056	-0.017	0.006	0.011	0.000000	0.000000	-1807.73	175.53
3	UNUSED		0.00	0	0.000	0.000	0.000	0.000	0.000000	0.000000	0.00	0.00
4	GUIDE	260964592	9.73	8473	0.036	-0.035	0.092	0.149	186.307418	29.951441	-2054.75	254.42
5	GUIDE	331352552	9.37	8469	-0.067	0.020	0.103	0.166	185.768300	30.610633	-854.75	-2391.33
6	UNUSED		0.00	0	0.000	0.000	0.000	0.000	0.000000	0.000000	0.00	0.00
7	GUIDE	331355312	7.78	8474	0.026	0.021	0.078	0.119	184.992302	30.486549	1592.36	-2418.99

2.4 Star Slots

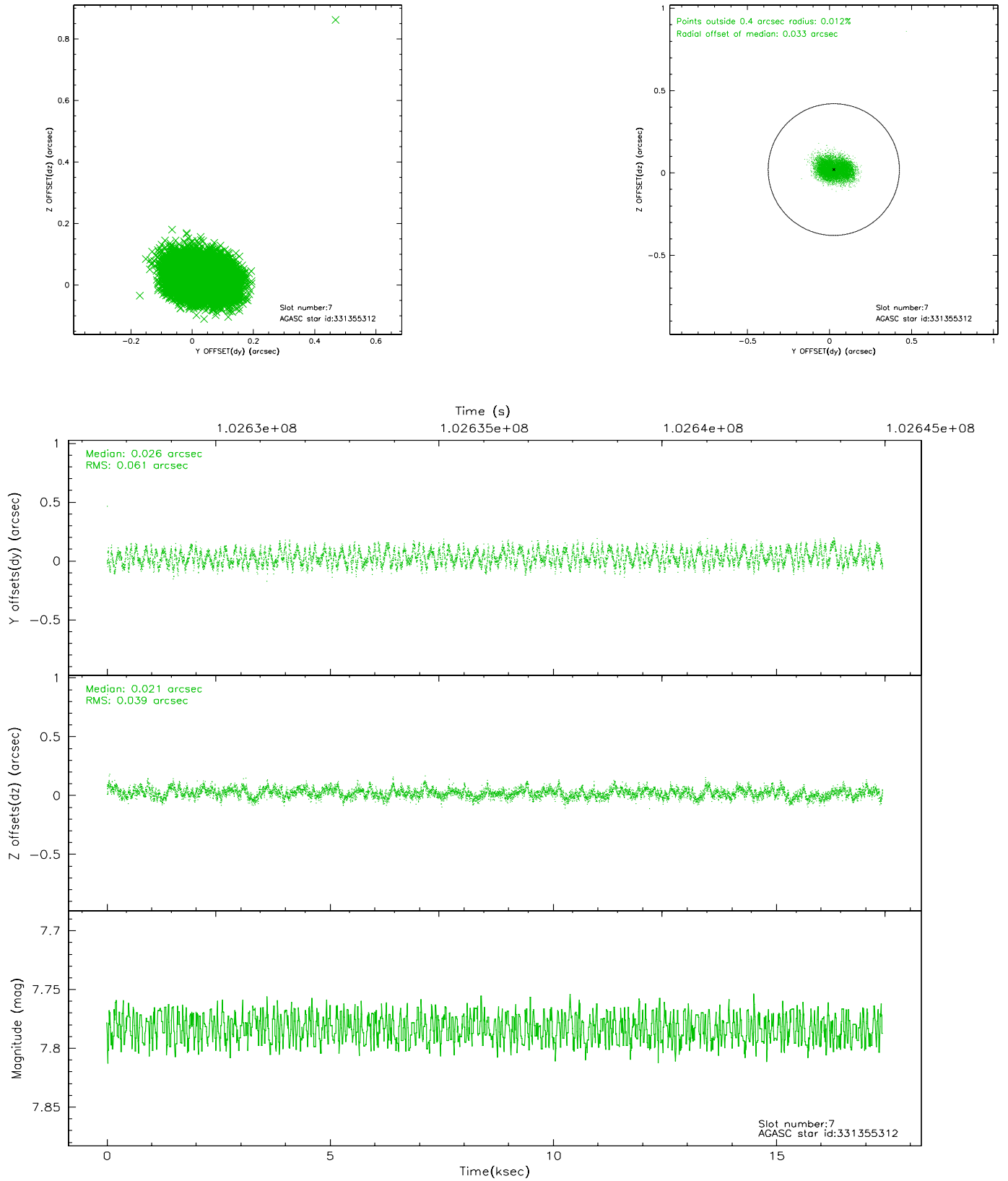
2.4.1 Slot 4



2.4.2 Slot 5

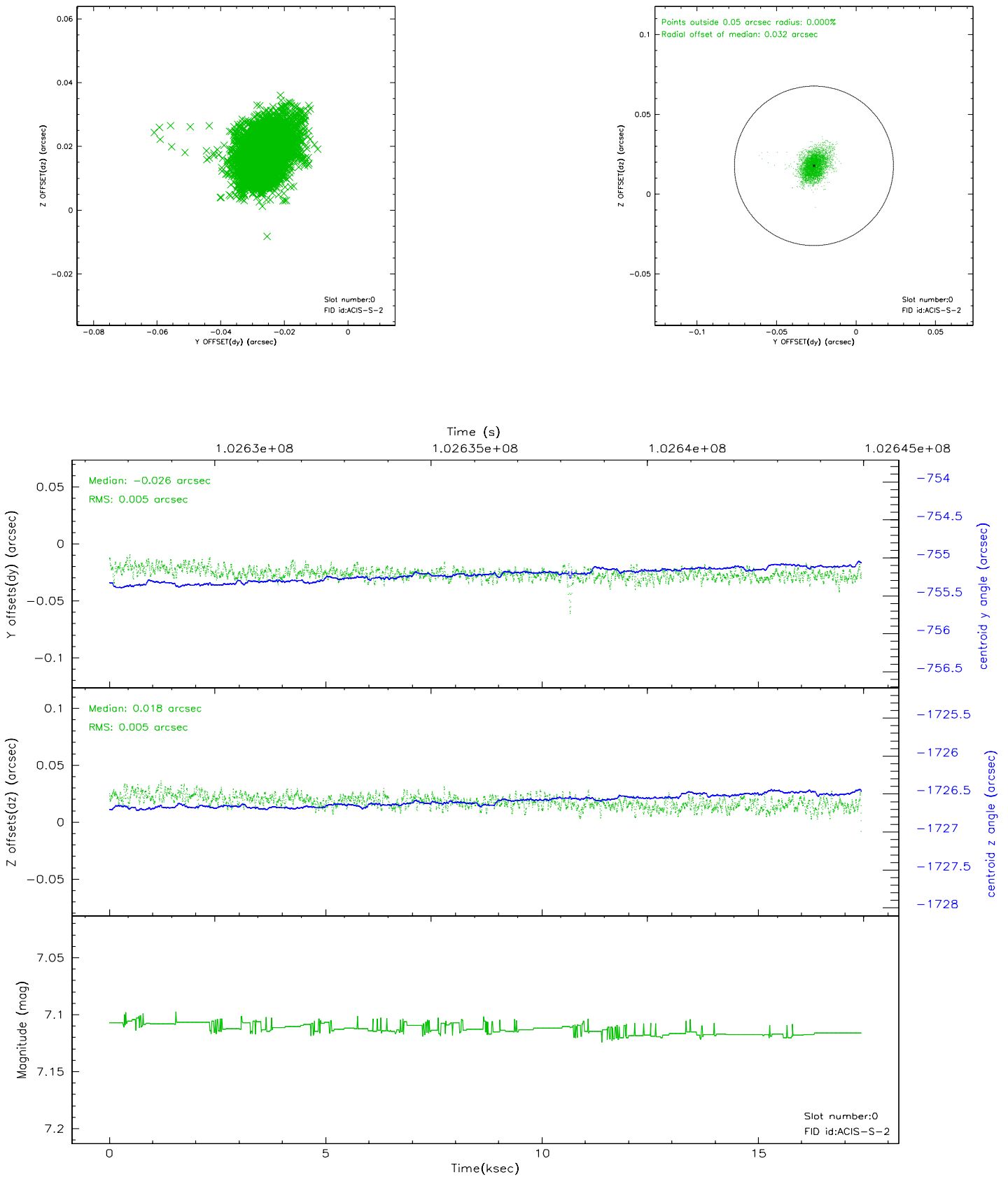


2.4.3 Slot 7

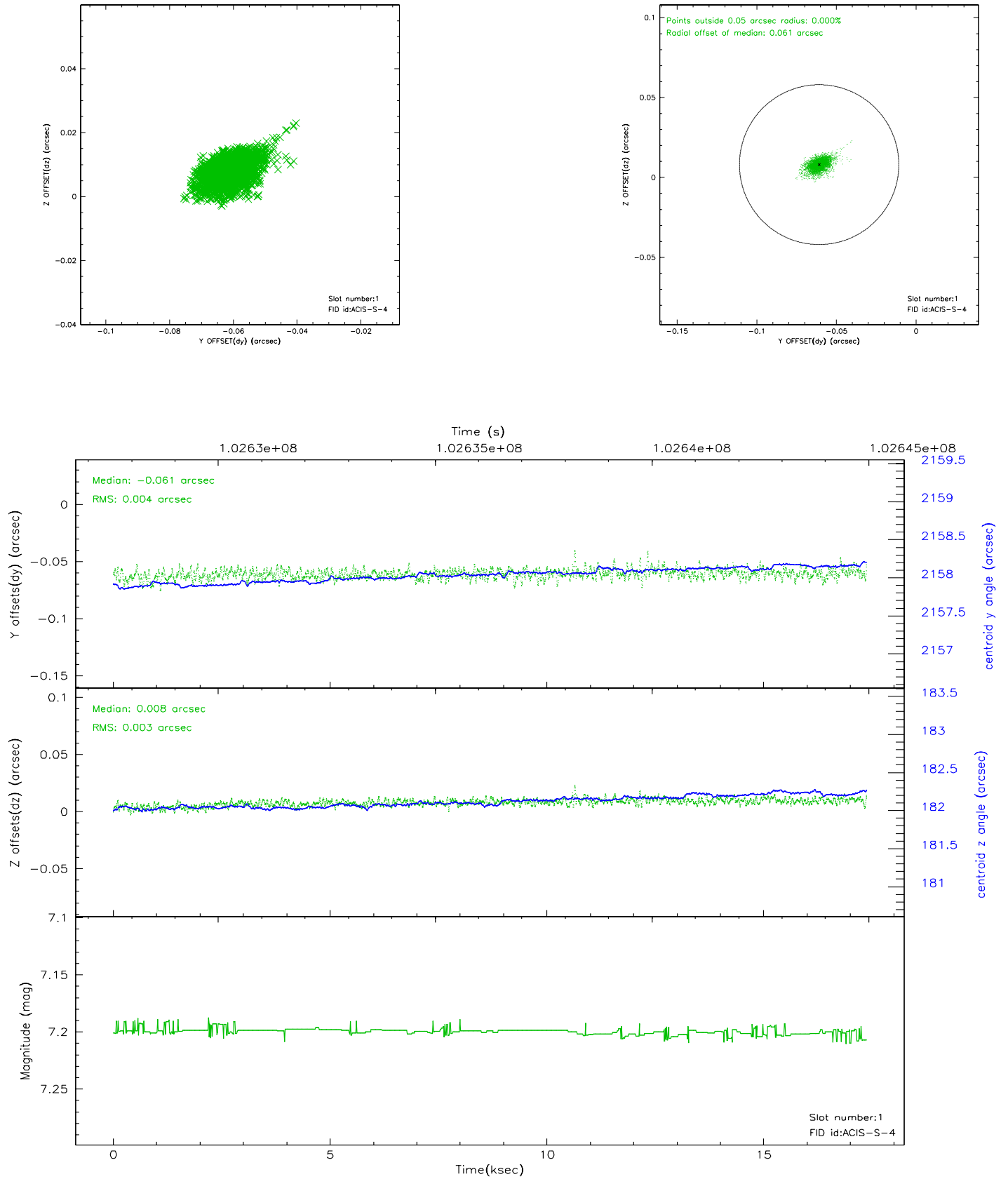


2.5 FID Slots

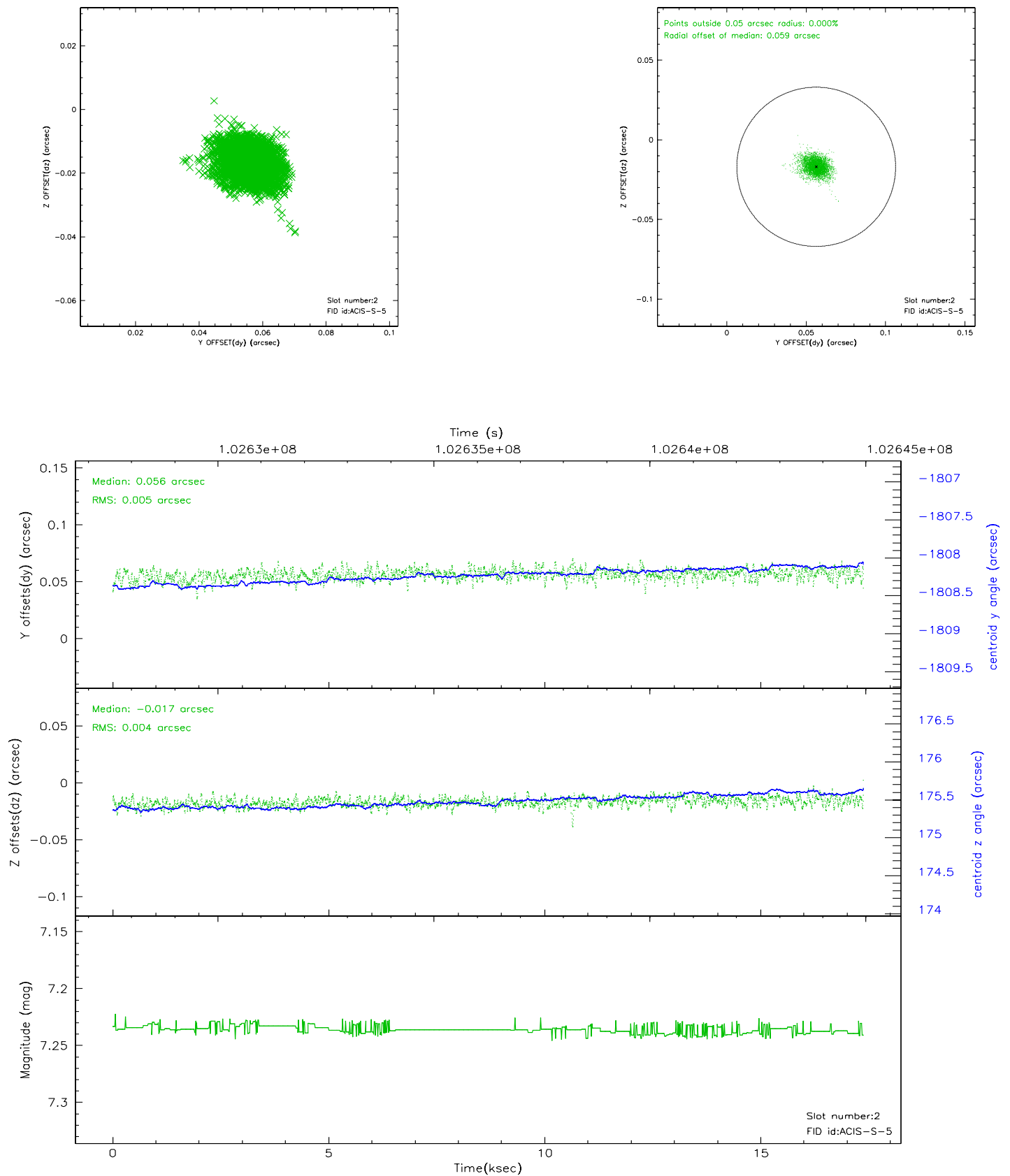
2.5.1 Slot 0



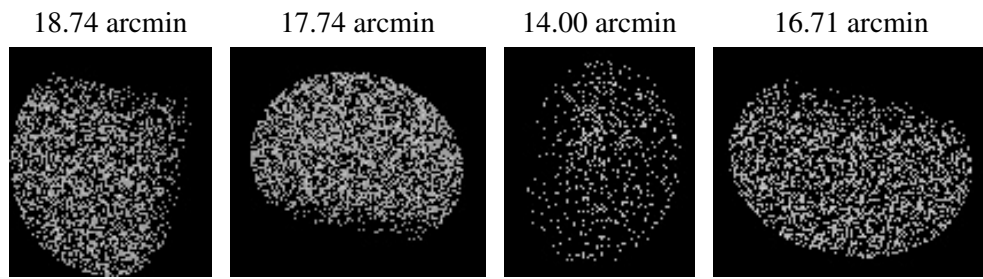
2.5.2 Slot 1



2.5.3 Slot 2



3 Point Sources



A Summary

A.1 Status

V&V Scientist	Beth Sundheim
V&V Date (YYYY-MM-DD)	2006.11.13
V&V Edition	1
V&V Disposition and Status	OK
V&V Charge Time	16.281

A.2 Comments

There is a brief spike in the count rate towards the middle of the observation.