

V&V Reference Report

L2 ASCDS Version : 8.4.5

Observation 1902 - L2 Version 3
Chandra X-Ray Center

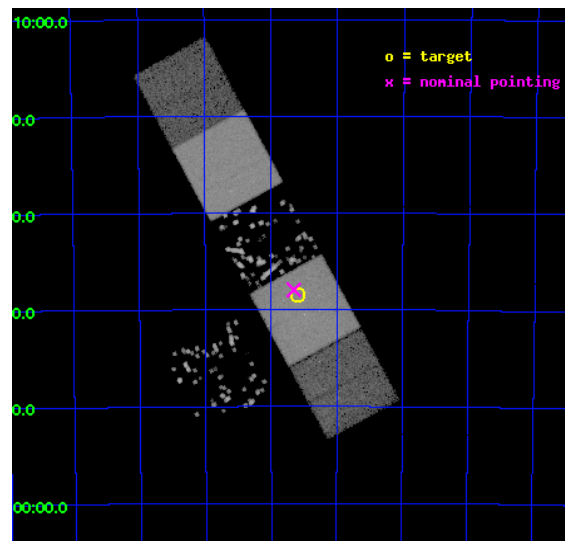
L2 Processing Date : Sep 26 2012

Contents

1	Front	2
2	OBI	3
2.1	OBI	3
2.1.1	Images	3
2.1.2	Bias	3
2.1.3	Parameters	4
2.1.4	Events	4
2.2	Compared Parameters	5
2.3	Aspect	6
2.4	Star Slots	9
2.4.1	Slot 3	9
2.4.2	Slot 4	10
2.4.3	Slot 5	11
2.4.4	Slot 6	12
2.4.5	Slot 7	13
2.5	FID Slots	14
2.5.1	Slot 0	14
2.5.2	Slot 1	15
2.5.3	Slot 2	16
A	Summary	17
A.1	Status	17
A.2	Comments	17

1 Front

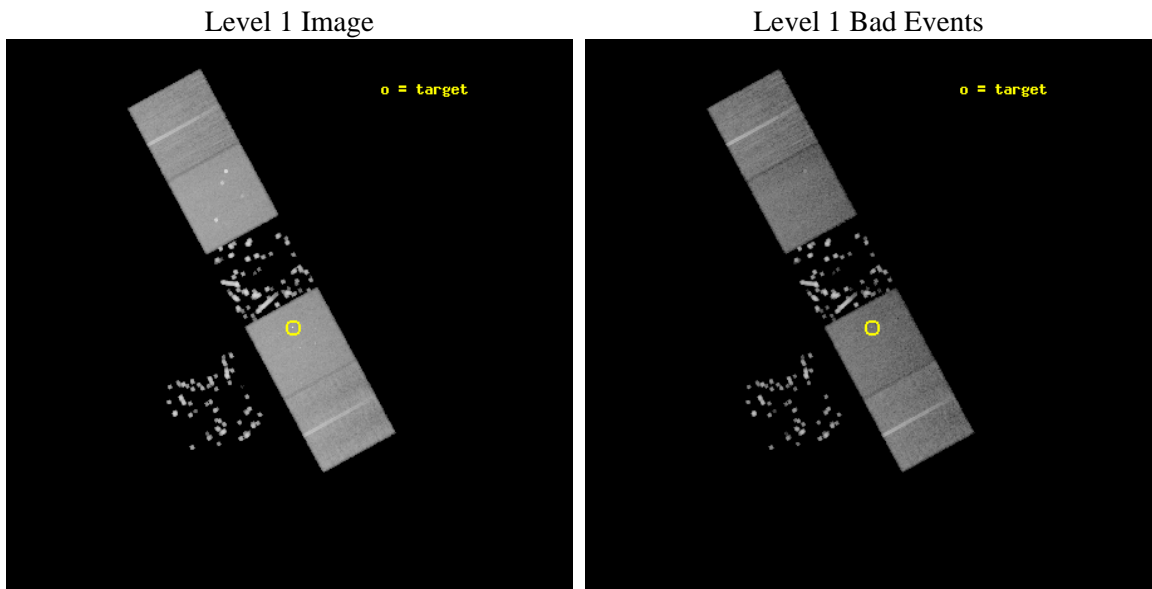
seq_num	300050	Sequence number
obs_id	1902	Observation id
title	STUDYING THE OLD CLASSICAL NOVA SHELLS IN X-RAYS II : THE SHELL OF CLASSICAL NOVA PICTORIS 1925 (RR PIC)	Proposal title
observer	Prof. Solen Balman	Principal investigator
object	RR PIC	Source name
dtcycle	0	
cycle	P	events from which exps? Prim/Second/Both
ra_targ	98.900417	Observer's specified target RA [deg]
dec_targ	-62.640083	Observer's specified target Dec [deg]
ra_nom	98.913666324079	Nominal RA [deg]
dec_nom	-62.632486123967	Nominal Dec [deg]
roll_nom	61.487198701228	Nominal Roll [deg]
revision	3	Processing version of data
ontime	24873.506670445	Sum of GTIs [s]
livetime	24558.543351956	Livetime [s]
ontime3	24873.38355045	Sum of GTIs [s]
ontime4	24873.547710449	Sum of GTIs [s]
ontime5	24873.465630442	Sum of GTIs [s]
ontime6	24873.424590454	Sum of GTIs [s]
ontime7	24873.506670445	Sum of GTIs [s]
ontime8	24873.342510447	Sum of GTIs [s]
l2events	271661	Number of level 2 events



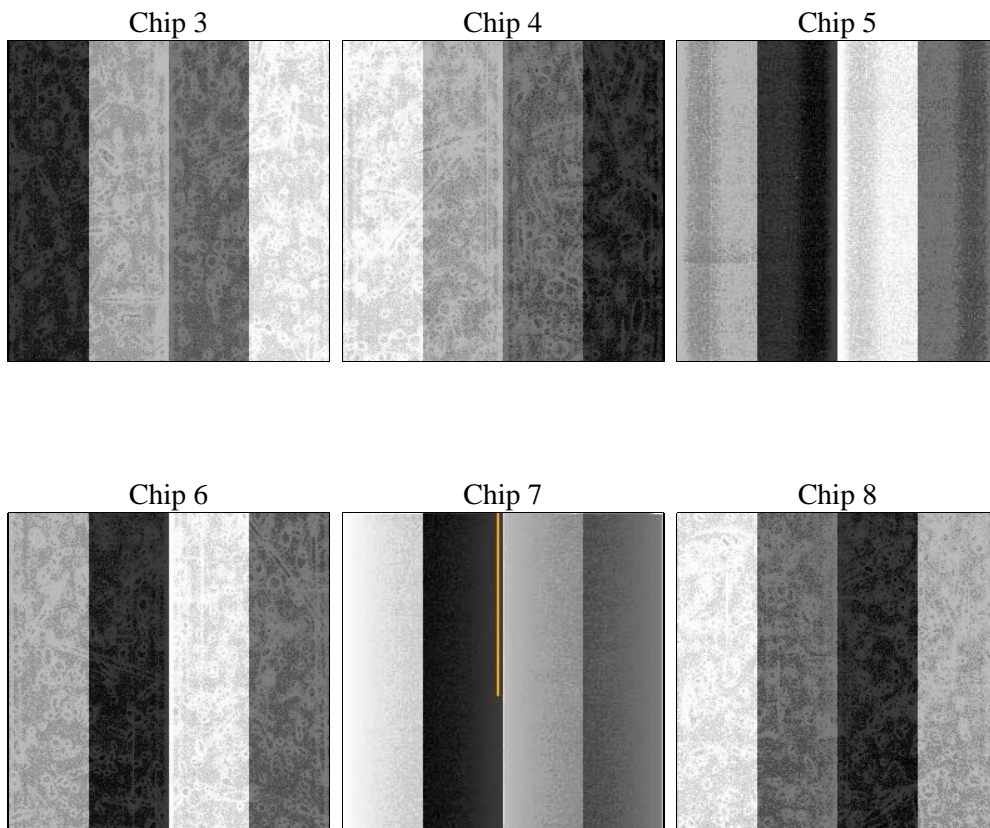
2 OBI

2.1 OBI

2.1.1 Images



2.1.2 Bias



2.1.3 Parameters

obi_num	0	Obi number	sched_exp_time	25000.000000	[s] Scheduled observation exposure time
ascdsver	8.4.5	Processing system revision	ontime	24873.506670445	Sum of GTIs [s]
caldsver	4.5.1.1	 	ontime3	24873.38355045	Sum of GTIs [s]
date	2012-09-26T03:11:55	Date and time of file creation	ontime4	24873.547710449	Sum of GTIs [s]
revision	3	Processing version of data	ontime5	24873.465630442	Sum of GTIs [s]
			ontime6	24873.424590454	Sum of GTIs [s]
			ontime7	24873.506670445	Sum of GTIs [s]
			ontime8	24873.342510447	Sum of GTIs [s]
			l1events	946698	Number of level 1 events

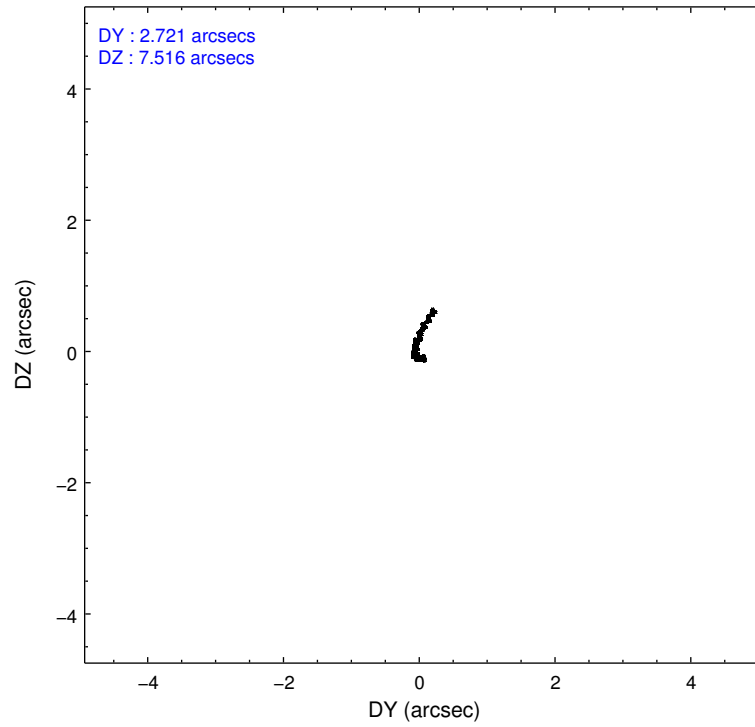
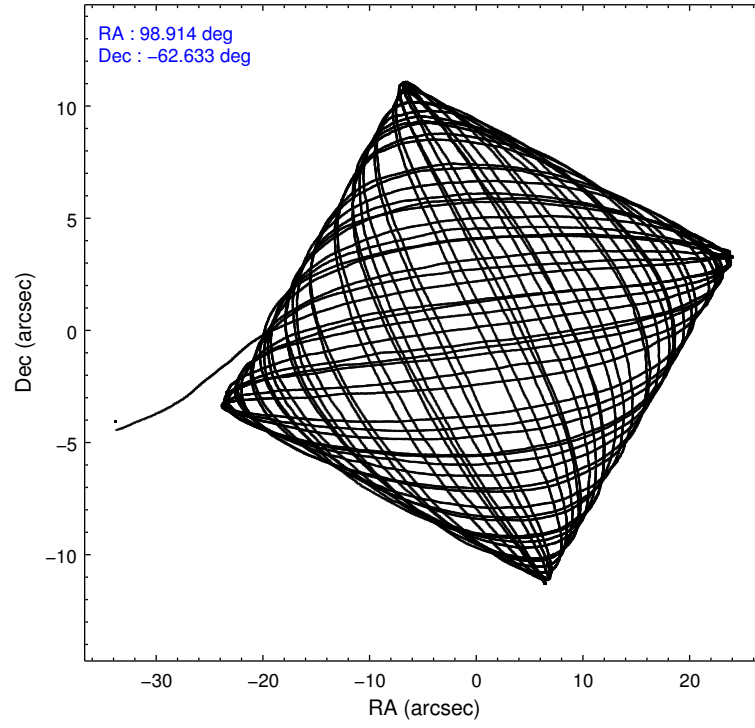
2.1.4 Events

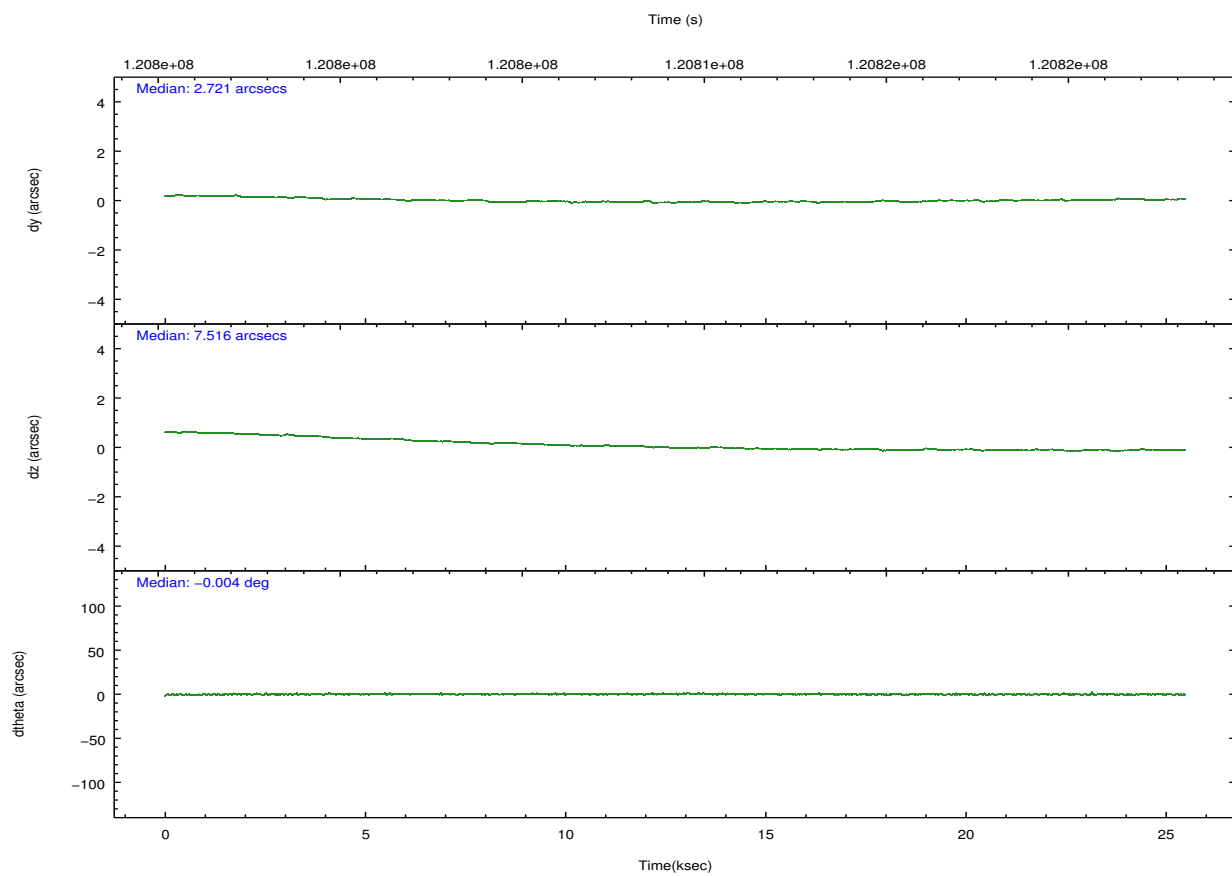
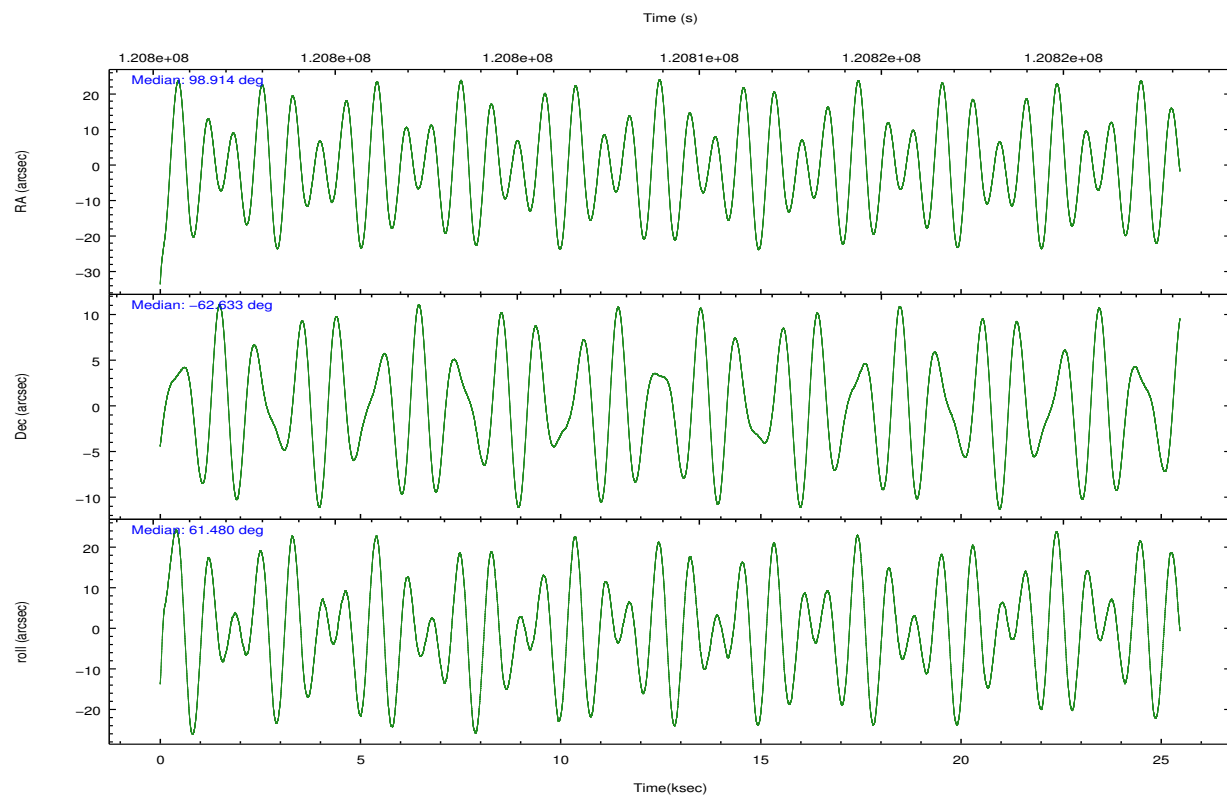
	ccd 3	ccd 4	ccd 5	ccd 6	ccd 7	ccd 8		ccd 3	ccd 4	ccd 5	ccd 6	ccd 7	ccd 8
level 1 events	44463	175958	234135	77225	215635	199282	grade 0 events	1325	9859	15785	2580	10968	16531
rejected events	33320	153920	117709	57536	113966	153012		2%	5%	6%	3%	5%	8%
rejected %	74%	87%	50%	74%	52%	76%	grade 1 events	2094	91	529	4076	210	125
								4%	0%	0%	5%	0%	0%
							grade 2 events	3369	5218	33236	5762	19901	9265
								7%	2%	14%	7%	9%	4%
							grade 3 events	2418	1780	5072	4216	9062	5080
								5%	1%	2%	5%	4%	2%
							grade 4 events	1718	1687	5101	3070	9026	4656
								3%	0%	2%	3%	4%	2%
							grade 5 events	5385	5642	16503	9369	18887	8367
								12%	3%	7%	12%	8%	4%
							grade 6 events	2314	3501	57257	4062	52727	10743
								5%	1%	24%	5%	24%	5%
							grade 7 events	25840	148180	100652	44090	94854	144515
								58%	84%	42%	57%	43%	72%

2.2 Compared Parameters

Parameter	Planned	Actual	Parameter	Planned	Actual
Instrument	ACIS	ACIS	Obspar format version number	7	7
Detector	ACIS-345678	ACIS-345678	Obspar file type	PREDICTED	ACTUAL
Grating	NONE	NONE	Obspar update status	NONE	UPDATED
Data mode	FAINT	FAINT	Number of optional ACIS chips dropped	0	0
Observation mode	POINTING	POINTING	On-chip summing requested	N	N
[deg] Pointing RA	98.915901	98.91366632407889	Subarray requested	NONE	NONE
[deg] Pointing Dec	-62.659742	-62.63248612396728	Alternating exposures requested	N	N
[deg] Pointing Roll	61.332557	61.48719870122753	[s] Primary exposure time	0.000000	3.2
[mm] SIM focus pos	-0.684267	-0.6828225247311905			
[mm] SIM defocus	0	0.001444936568705701			
[mm] SIM translation stage pos	-190.132523	-190.1425803651734			
[mm] SIM translation stage offset	0	0.01005778216563158			
[s] Observation start time (MET)	120796931.184000	120795832.50701			
Observation start date	2001-10-30T02:41:07	2001-10-30T02:23:52			
[s] Observation end time (MET)	120821931.184000	120822539.90807			
Observation end date	2001-10-30T09:37:47	2001-10-30T09:48:59			
Read mode	TIMED	TIMED			

2.3 Aspect



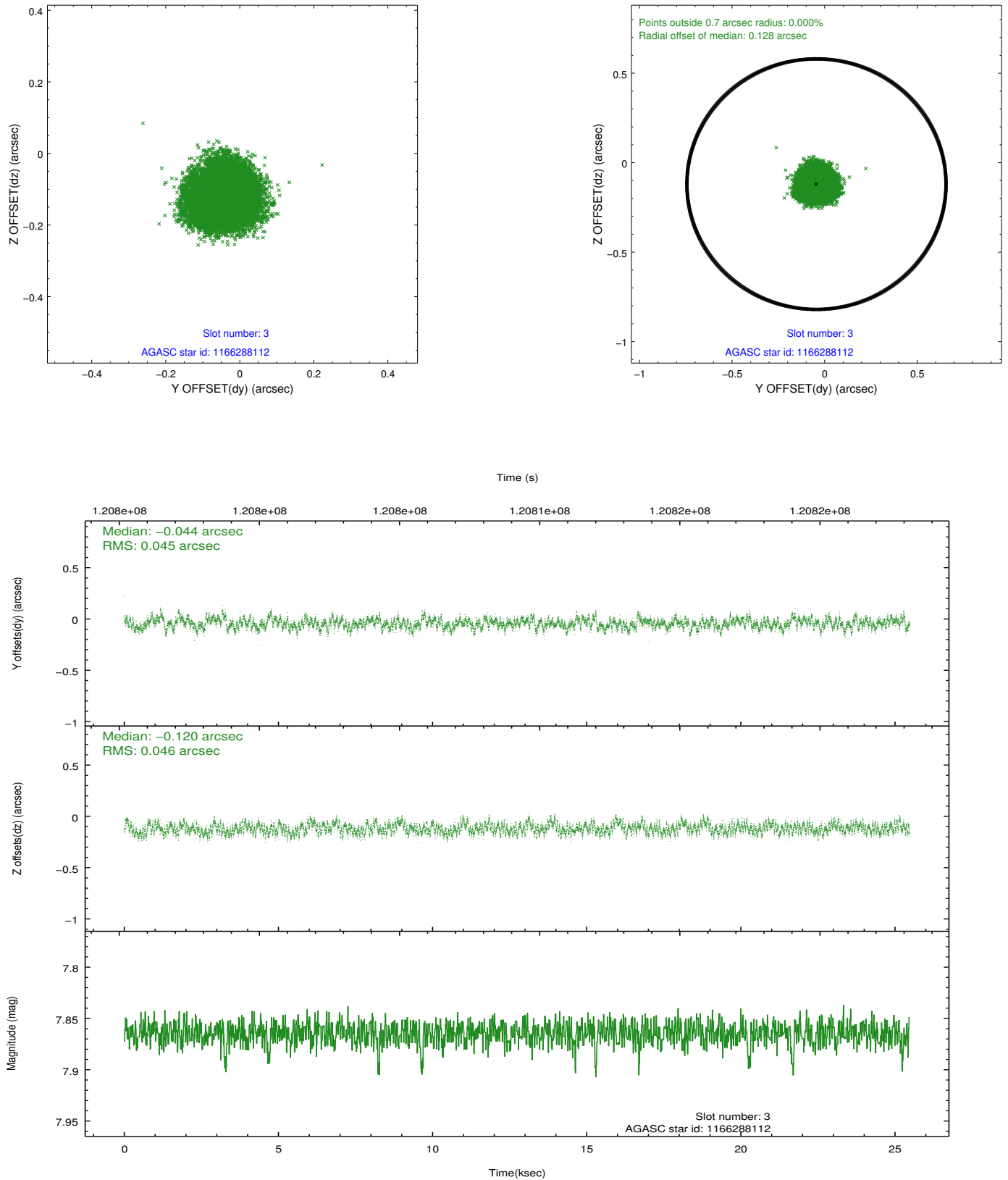


Slot Statistics

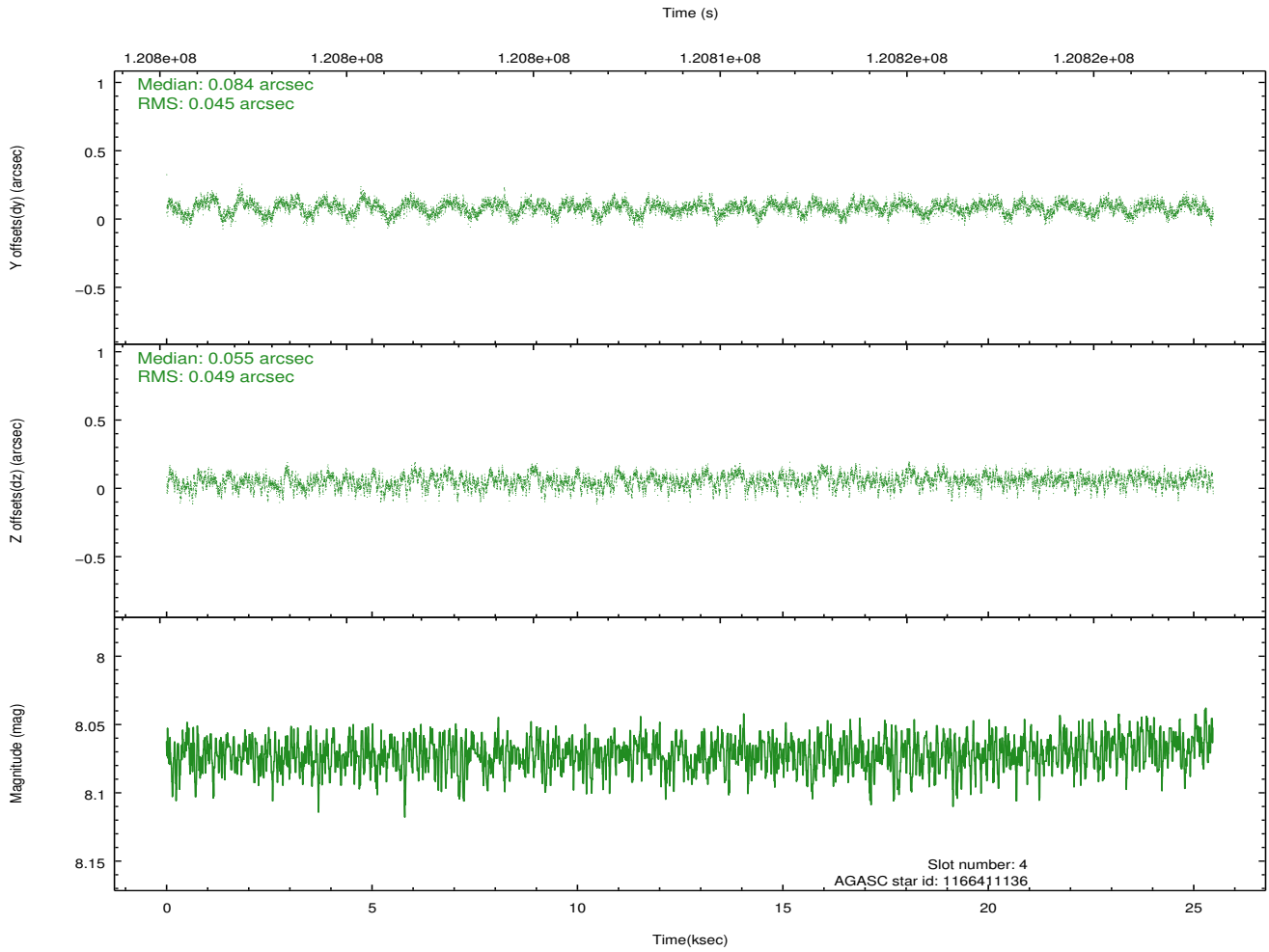
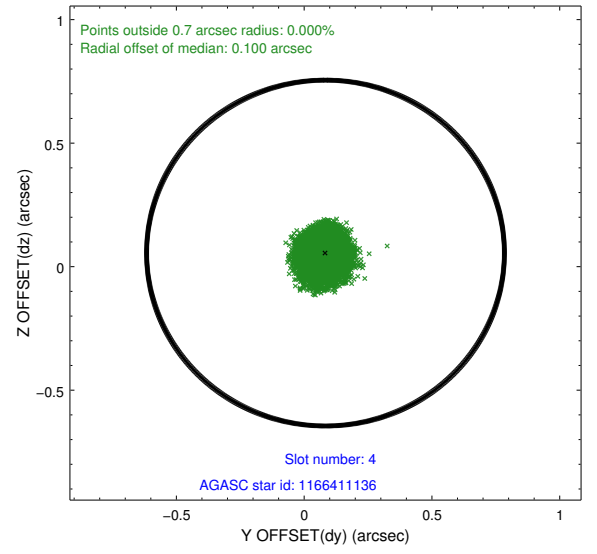
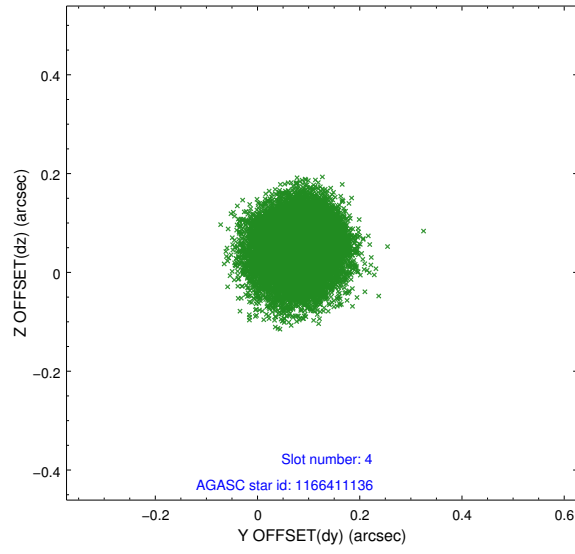
slot	status	id	mag	n_pts	med_dy	med_dz	dr1	dr2	ra	dec	mean_y	mean_z
0	FID	ACIS-S-1	7.19	6213	0.026	-0.039	0.013	0.032	0.000000	0.000000	940.65	-1724.44
1	FID	ACIS-S-5	7.24	6213	0.012	0.038	0.007	0.011	0.000000	0.000000	-1808.25	173.14
2	FID	ACIS-S-6	7.35	6213	-0.059	0.014	0.016	0.036	0.000000	0.000000	406.06	817.15
3	GUIDE	1166288112	7.86	12419	-0.044	-0.120	0.070	0.107	98.486641	-62.828792	-874.69	326.27
4	GUIDE	1166411136	8.07	12424	0.084	0.055	0.072	0.112	98.695552	-63.262140	-2074.53	-727.29
5	GUIDE	1165769456	9.44	12416	-0.006	0.064	0.111	0.180	98.427341	-61.847829	2163.32	2129.60
6	GUIDE	1166423520	9.01	12425	-0.103	0.120	0.074	0.120	100.239931	-62.723204	828.06	-2036.09
7	GUIDE	1166289240	10.70	12408	0.070	-0.119	0.200	0.331	97.617034	-62.444872	-378.23	2258.54

2.4 Star Slots

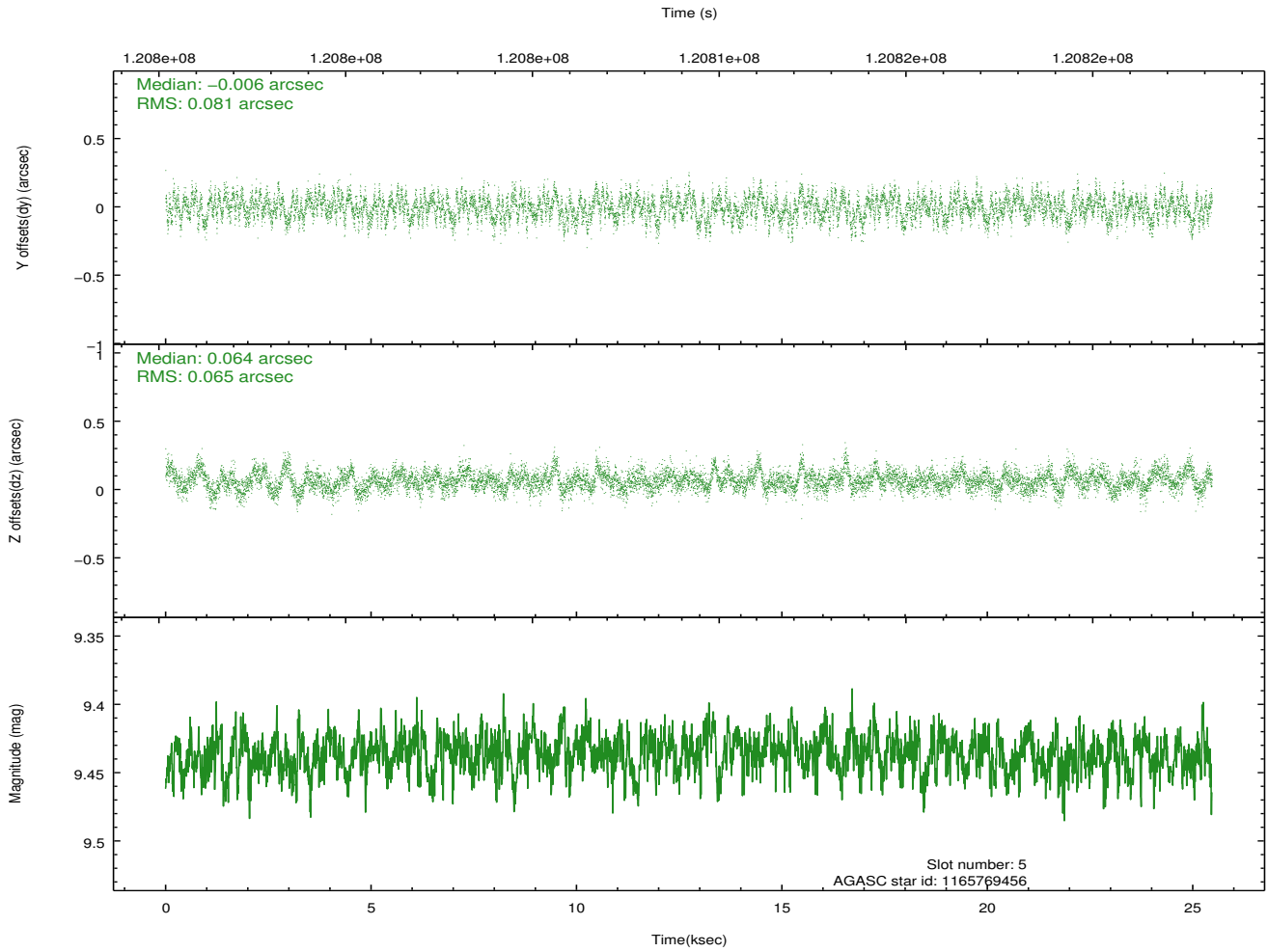
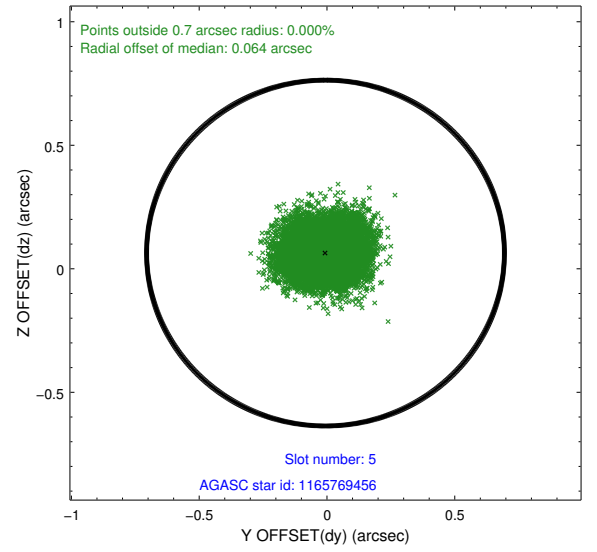
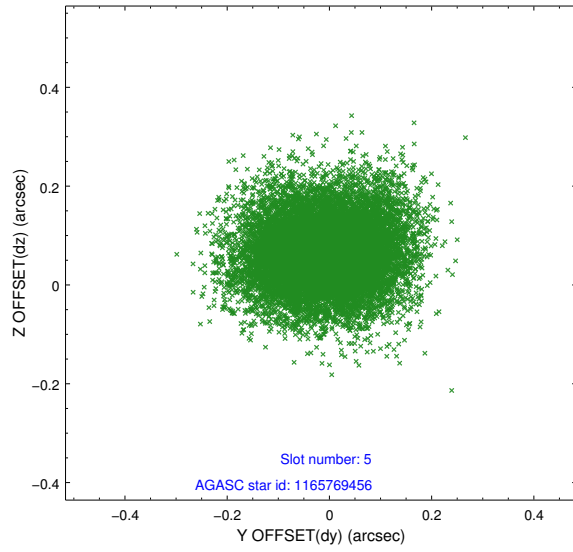
2.4.1 Slot 3



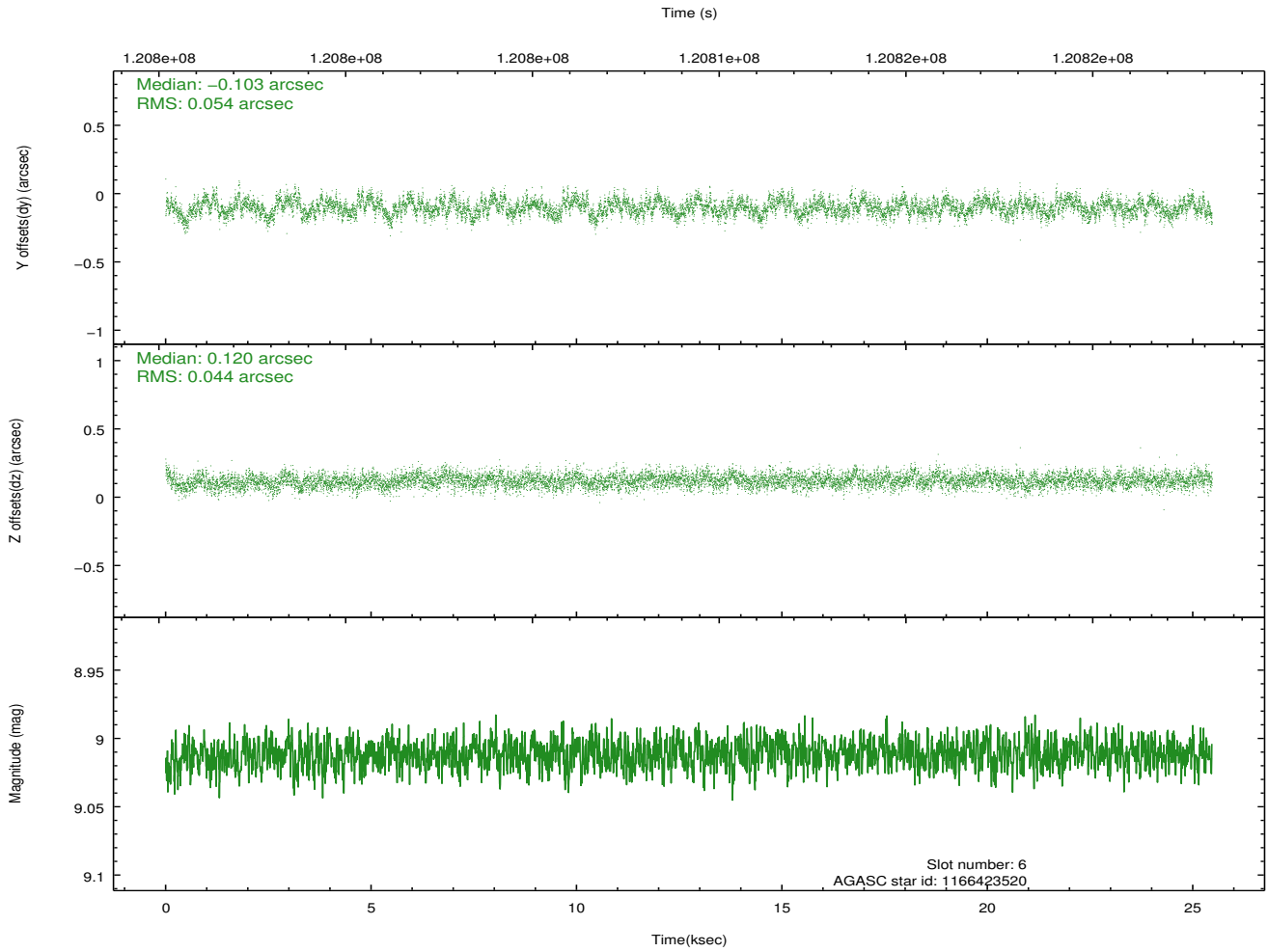
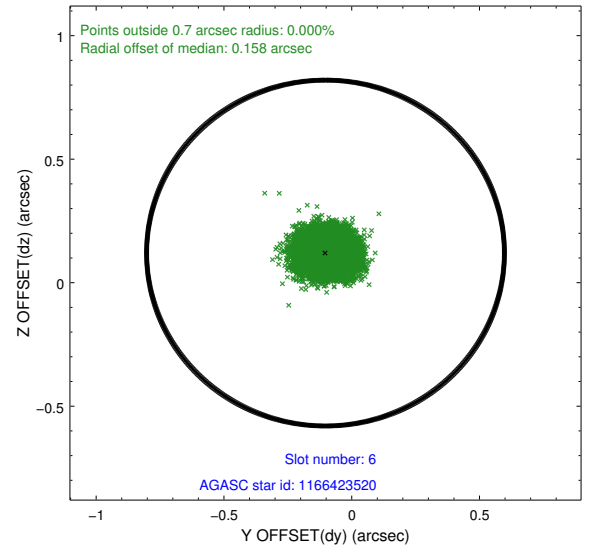
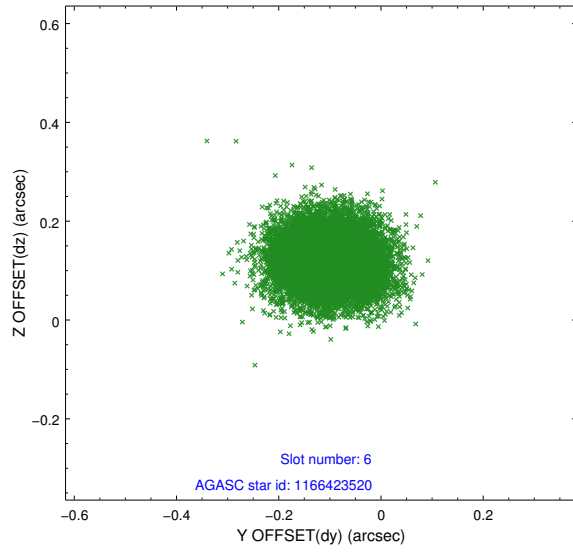
2.4.2 Slot 4



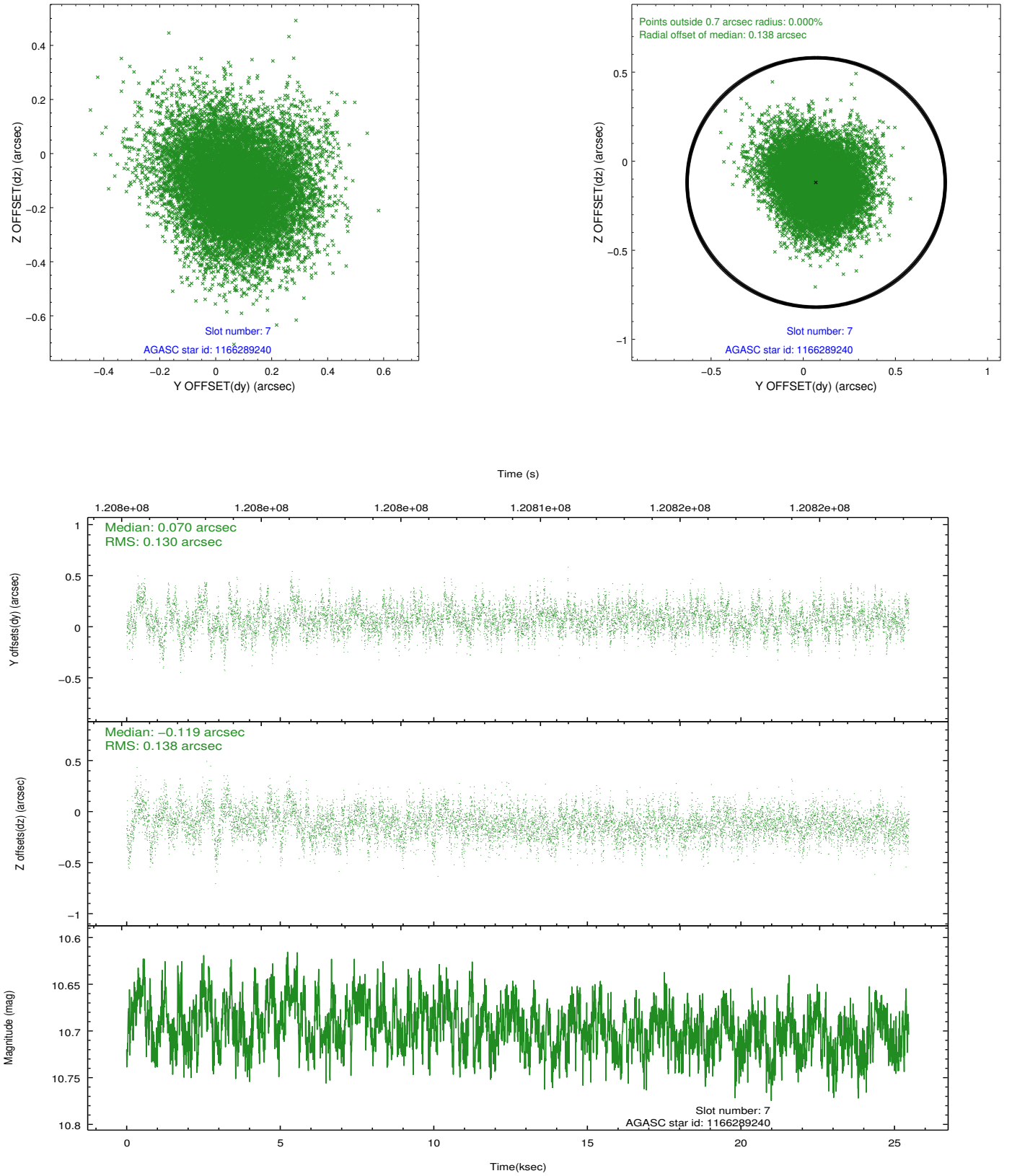
2.4.3 Slot 5



2.4.4 Slot 6

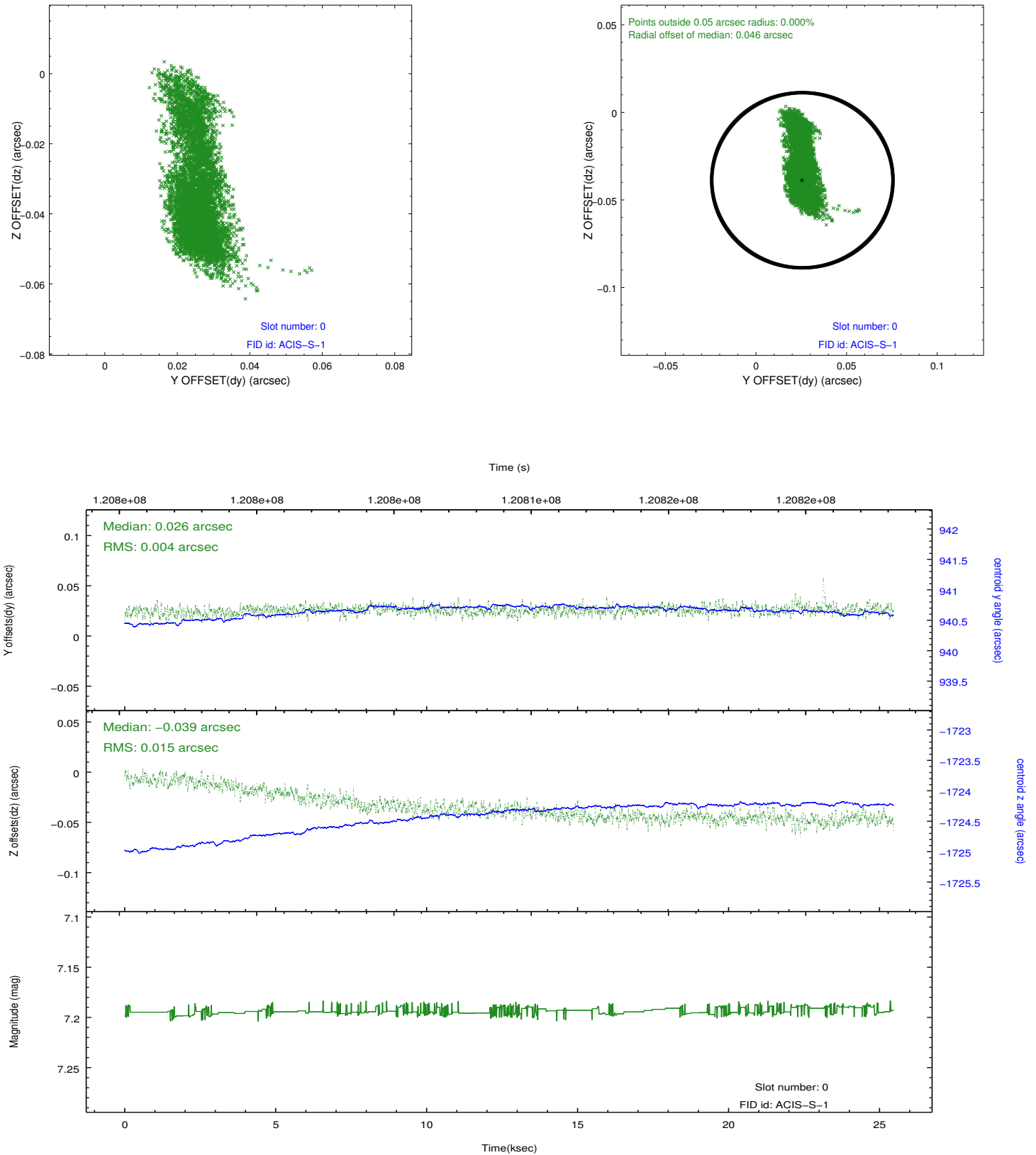


2.4.5 Slot 7

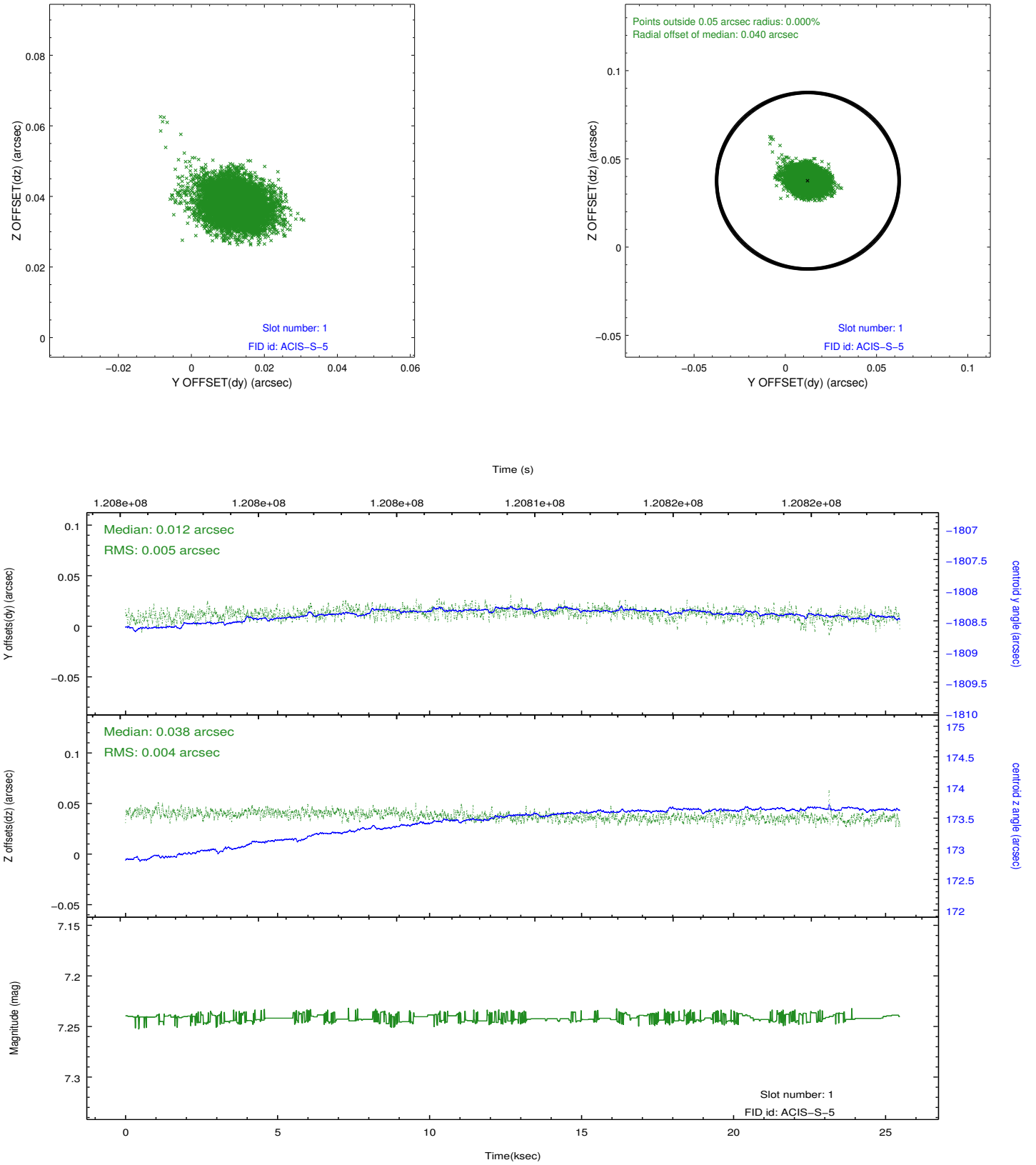


2.5 FID Slots

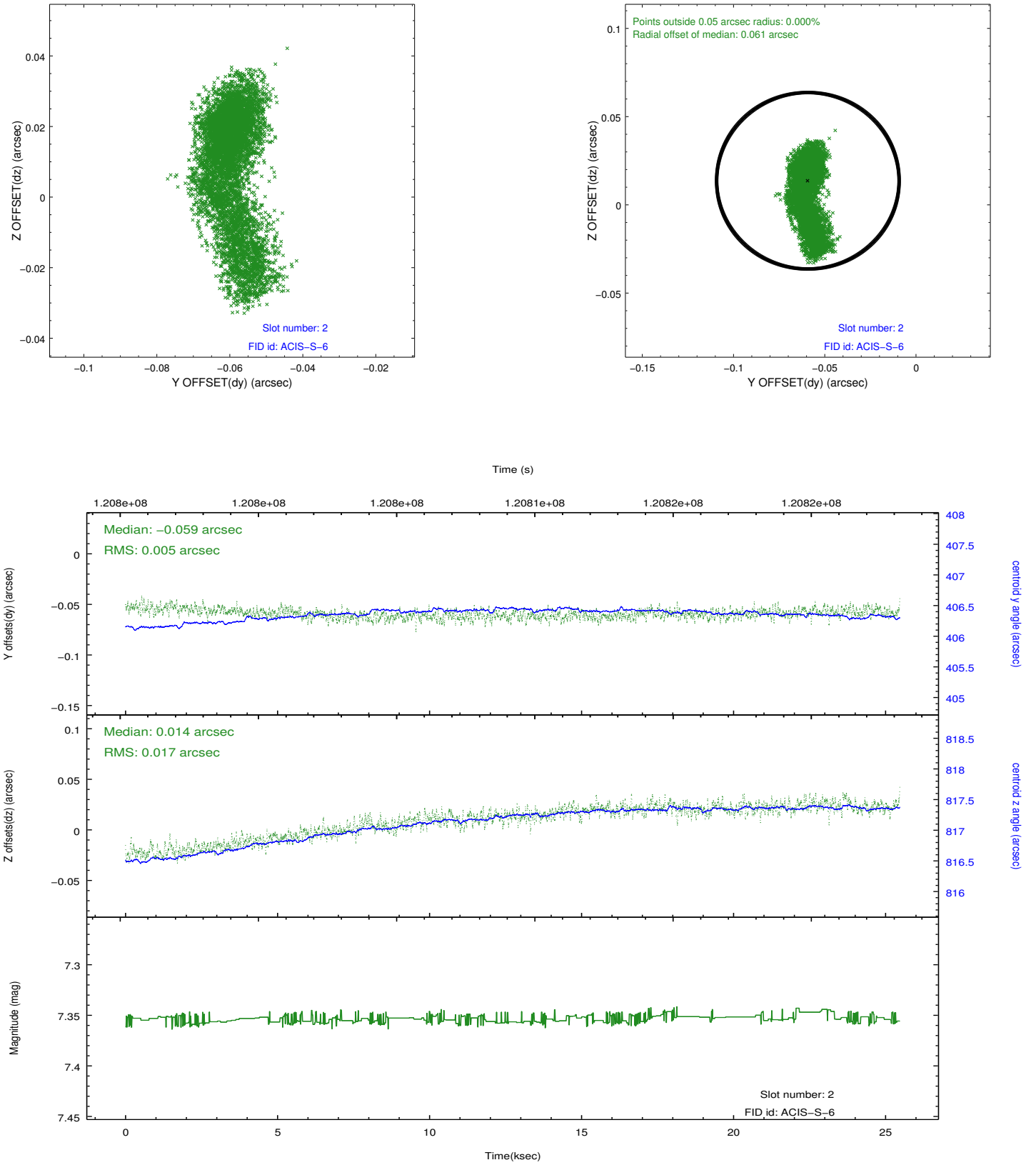
2.5.1 Slot 0



2.5.2 Slot 1



2.5.3 Slot 2



A Summary

A.1 Status

V&V Scientist	Jen Lauer
V&V Date (YYYY-MM-DD)	2012.09.27
V&V Edition	1
V&V Disposition and Status	OK
V&V Charge Time	24.873

A.2 Comments

During this observation, an ACIS Threshold-Plane Anomaly occurred. The flight s/w is intended to delay 'start events' until after 'end bias dump'. For some unknown reason, it occasionally fails to do so, and if the overlap lasts for more than a minute or so, one or more FEPs experience a firmware latch-up that renders them useless until they are power cycled. The anomaly occurred for chips 3 and 6 only. No event data were recorded for these chips. The target did not fall on one of the affected chips. A high radiation environment during the last 4 ksec of this observation caused an elevated count rate during that period.