

V&V Reference Report

L2 ASCDS Version : 7.6.10

Observation 1842 - L2 Version 001
Chandra X-Ray Center

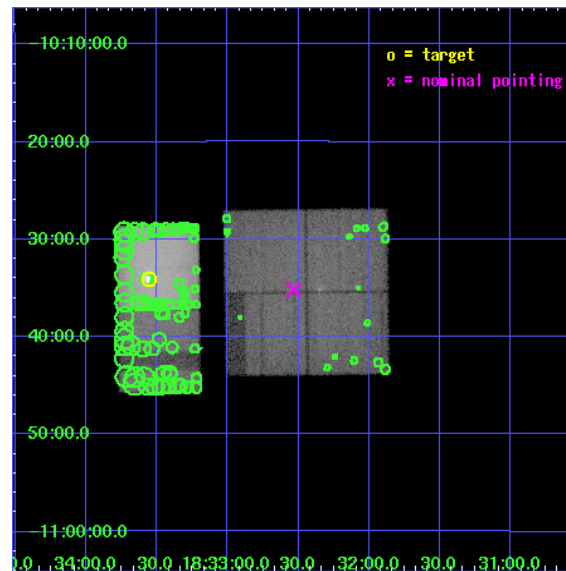
L2 Processing Date : Jun 6 2007

Contents

1	Front	2
2	OBI	3
2.1	OBI	3
2.1.1	Images	3
2.1.2	Bias	3
2.1.3	Parameters	4
2.1.4	Events	4
2.2	Compared Parameters	5
2.3	Aspect	6
2.4	Star Slots	9
2.4.1	Slot 3	9
2.4.2	Slot 4	10
2.4.3	Slot 5	11
2.4.4	Slot 6	12
2.4.5	Slot 7	13
2.5	FID Slots	14
2.5.1	Slot 0	14
2.5.2	Slot 1	15
2.5.3	Slot 2	16
3	Point Sources	17
A	Summary	18
A.1	Status	18
A.2	Comments	18

1 Front

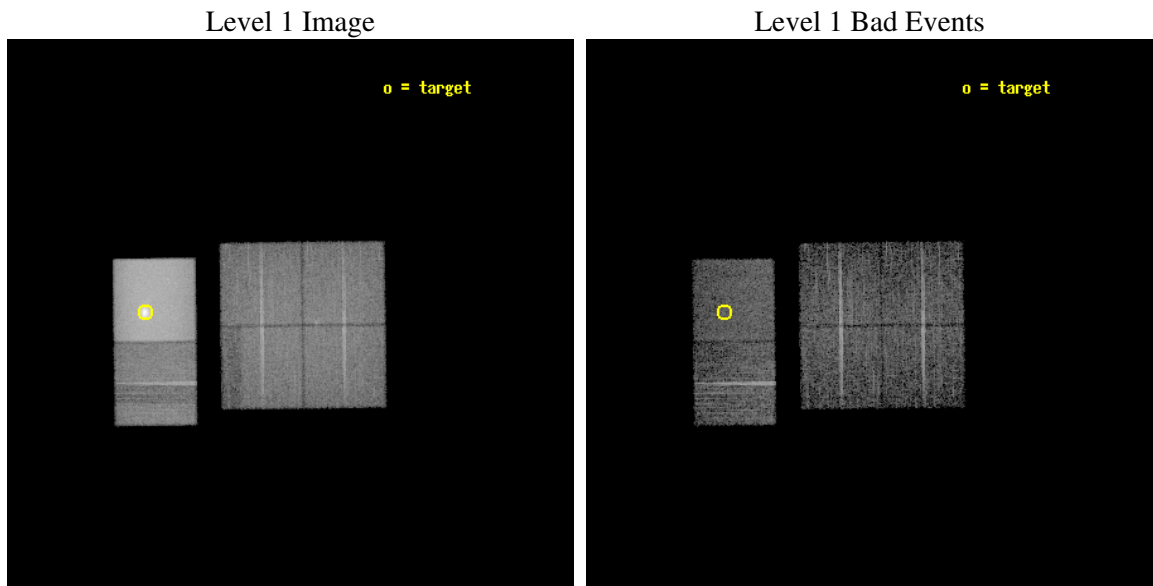
seq_num	590222
obs_id	1842
title	HRC RESPONSE TO CONTINUUM SOURCE.
observer	Dr. CXC Calibration
object	G21.5-0.9 [Chip S3, T=120, Offsets=-1,15,0]
dtcycle	0
cycle	P
ra_targ	278.389583
dec_targ	-10.568528
ra_nom	278.13300568616
dec_nom	-10.585982551003
roll_nom	269.34208214602
revision	2
ontime	7500.7636793256
livetime	7405.7844932003
ontime0	7361.4019304663
ontime1	7380.8480307758
ontime2	7322.5104673654
ontime3	7338.7152884007
ontime6	7397.0522838533
ontime7	7500.7636793256
l2events	536772



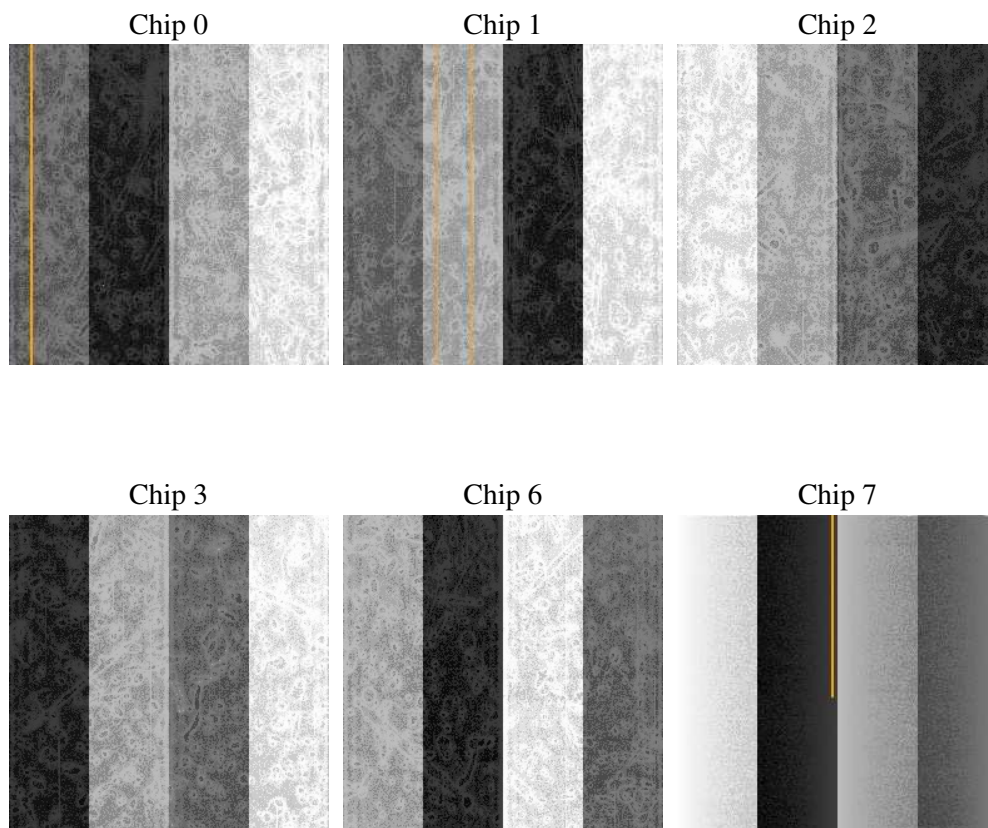
2 OBI

2.1 OBI

2.1.1 Images



2.1.2 Bias



2.1.3 Parameters

obi_num	0
ascdsver	7.6.10
caldsver	3.4.0
date	2007-06-06T14:54:38
revision	2

sched_exp_time	8000.000000
ontime	7500.7636793256
ontime0	7361.4019304663
ontime1	7380.8480307758
ontime2	7322.5104673654
ontime3	7338.7152884007
ontime6	7397.0522838533
ontime7	7500.7636793256
l1events	796597

2.1.4 Events

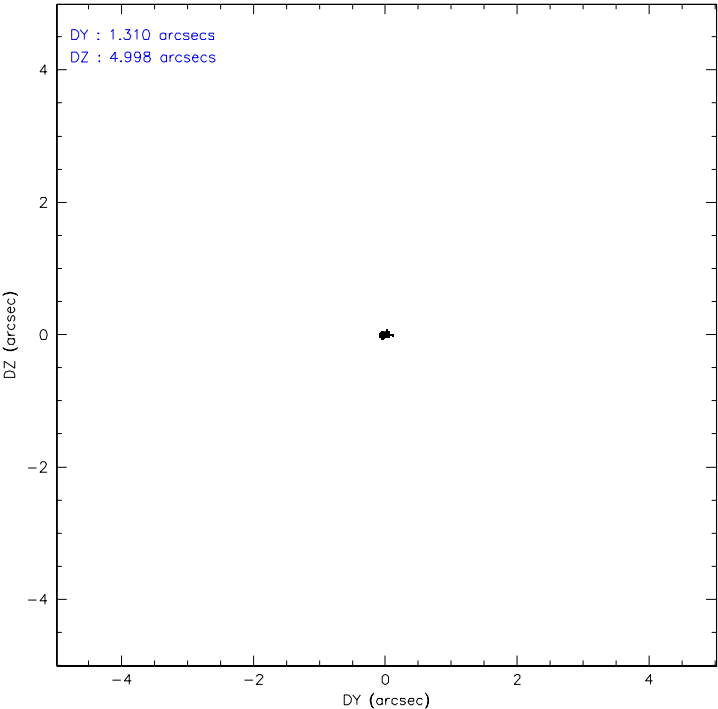
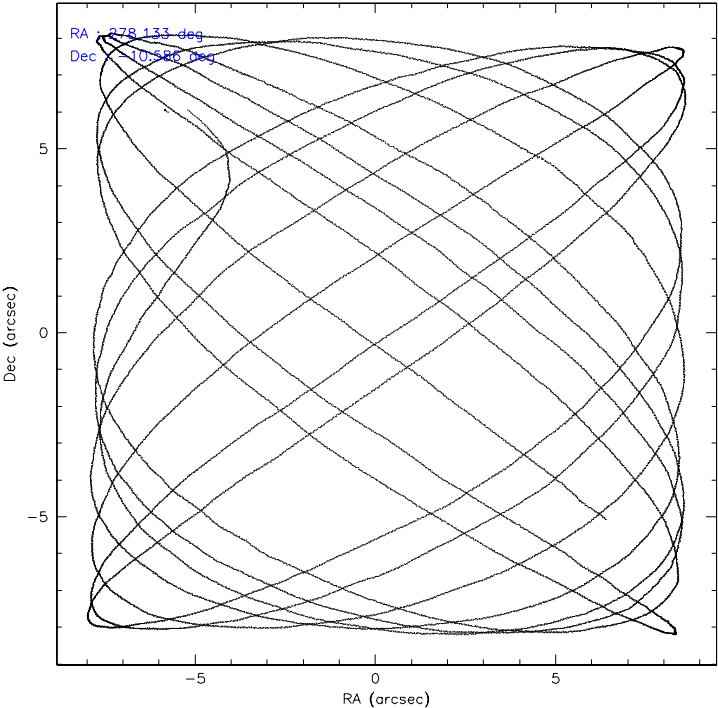
	ccd 0	ccd 1	ccd 2	ccd 3	ccd 6	ccd 7
level 1 events	90828	95628	87763	95032	107816	319530
rejected events	36364	37972	39654	40400	45207	40190
rejected %	40%	39%	45%	42%	41%	12%

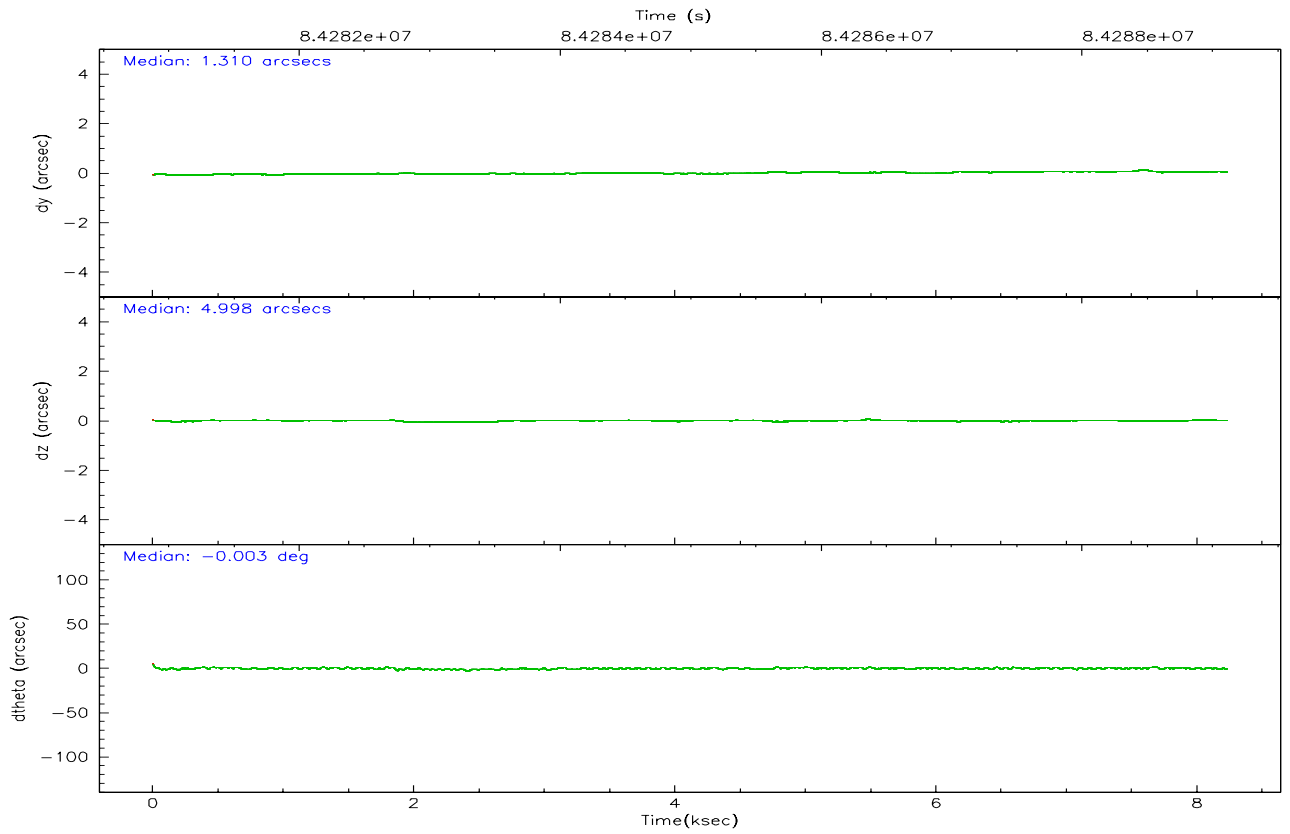
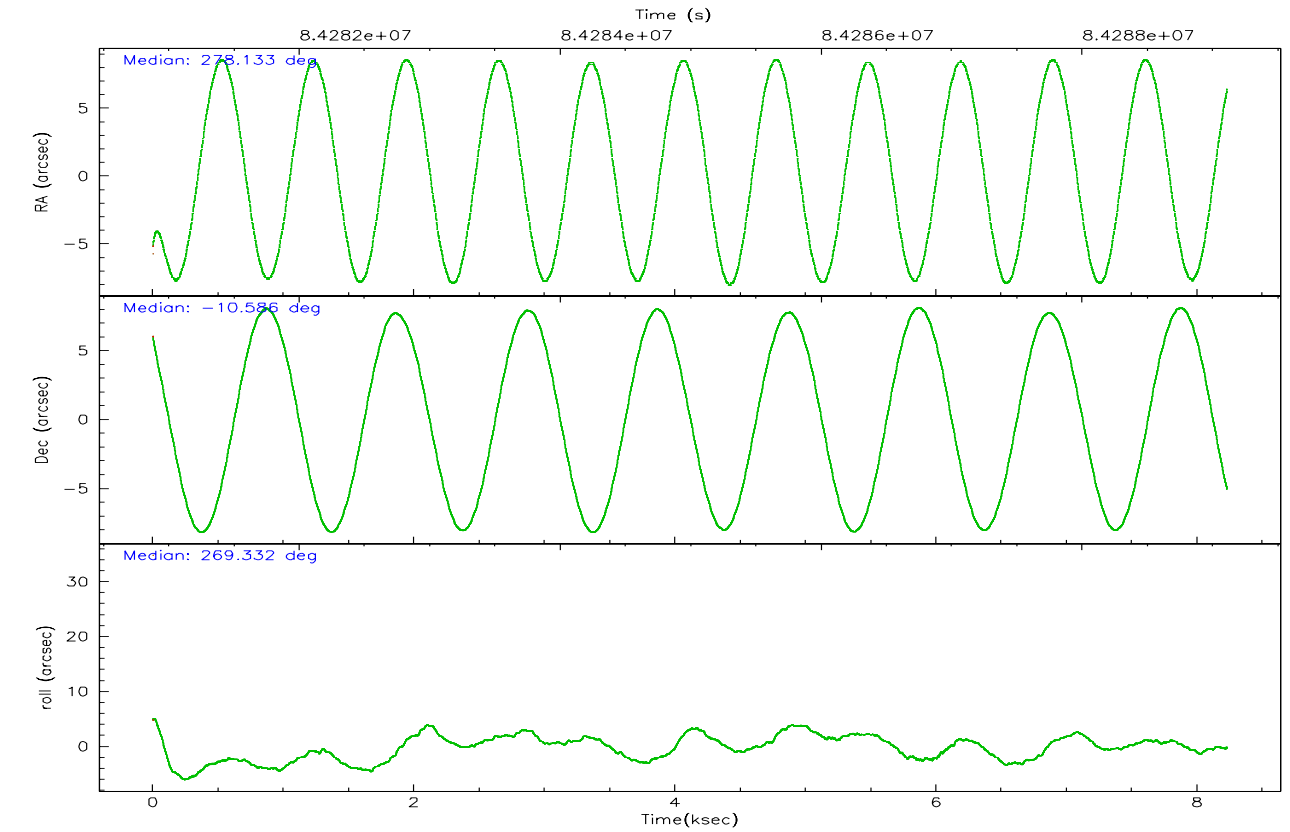
	ccd 0	ccd 1	ccd 2	ccd 3	ccd 6	ccd 7
grade 0 events	35257	35948	29637	34905	40693	32734
	38%	37%	33%	36%	37%	10%
grade 1 events	132	118	139	148	155	109
	0%	0%	0%	0%	0%	0%
grade 2 events	12322	14447	11425	13292	14363	49918
	13%	15%	13%	13%	13%	15%
grade 3 events	1529	1859	1389	1599	1581	21597
	1%	1%	1%	1%	1%	6%
grade 4 events	1741	1858	1530	1642	1832	21630
	1%	1%	1%	1%	1%	6%
grade 5 events	1629	1723	1611	1748	2069	6963
	1%	1%	1%	1%	1%	2%
grade 6 events	3641	3571	4156	3221	4184	153723
	4%	3%	4%	3%	3%	48%
grade 7 events	34577	36104	37876	38477	42939	32856
	38%	37%	43%	40%	39%	10%

2.2 Compared Parameters

Parameter	Planned	Actual	Parameter	Planned	Actual
Instrument	ACIS	ACIS	Obspar format version number	6	6
Detector	ACIS-012367	ACIS-012367	Obspar file type	PREDICTED	ACTUAL
Grating	NONE	NONE	Obspar update status	NONE	UPDATED
Data mode	FAINT	FAINT	Number of optional ACIS chips dropped	0	0
Observation mode	POINTING	POINTING	On-chip summing requested	N	N
Pointing RA	278.119395	278.133005686164	Subarray requested	NONE	NONE
Pointing Dec	-10.561949	-10.58598255100319	Alternating exposures requested	N	N
Pointing Roll	269.130885	269.3420821460249	Primary exposure time	0.000000	3.2
SIM focus pos (mm)	-0.782348	-0.7809083437167272			
SIM defocus (mm)	0	0.001439871863259334			
SIM translation stage pos (mm)	-231.230463	-231.2390639691716			
SIM translation stage offset (mm)	-2.362	-2.353389033758049			
Observation start time	84281065.184000	84280645.818866			
Observation start date	2000-09-02T11:23:21	2000-09-02T11:17:25			
Observation end time	84289065.184000	84289427.506696			
Observation end date	2000-09-02T13:36:41	2000-09-02T13:43:47			
Read mode	TIMED	TIMED			

2.3 Aspect



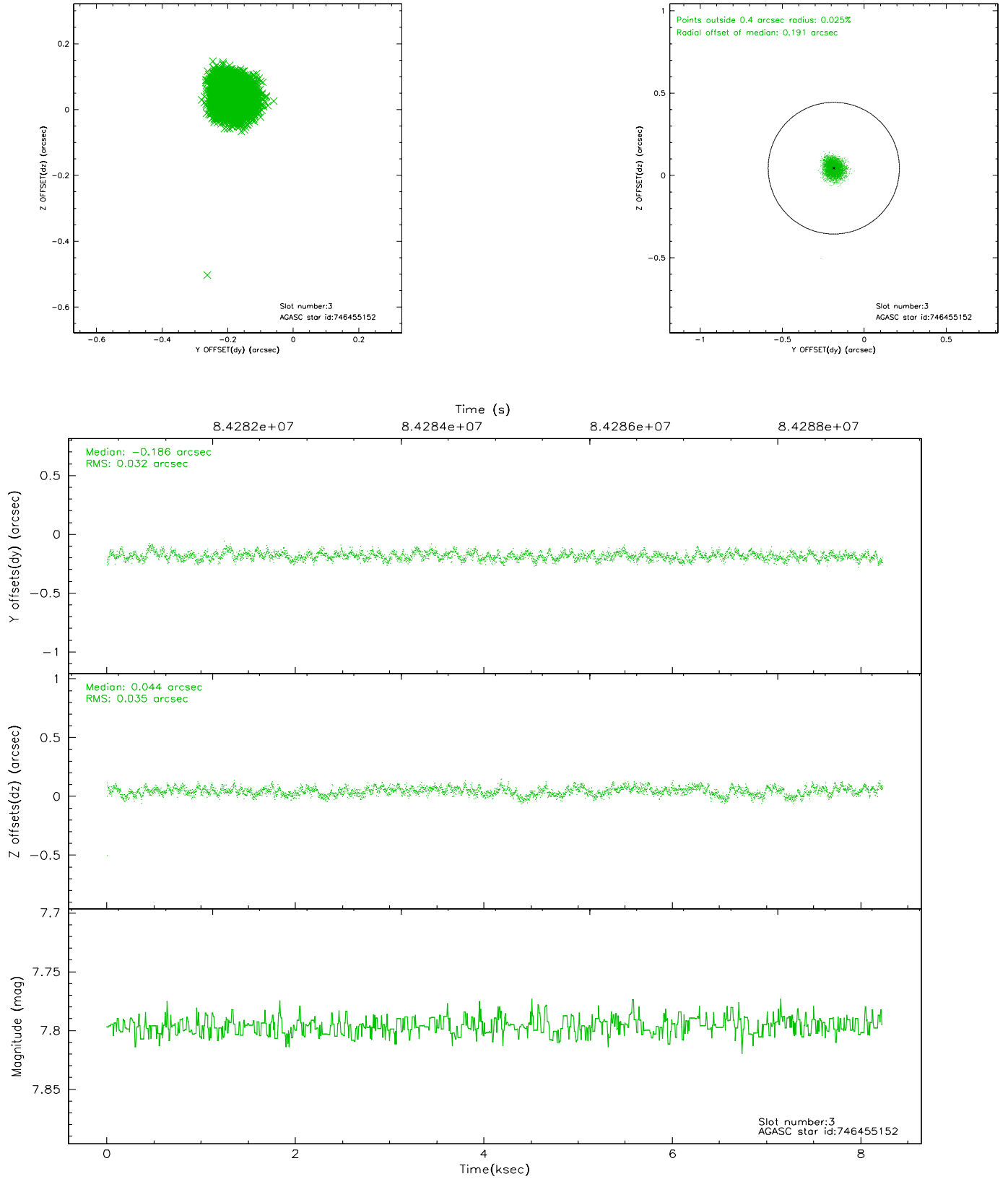


Slot Statistics

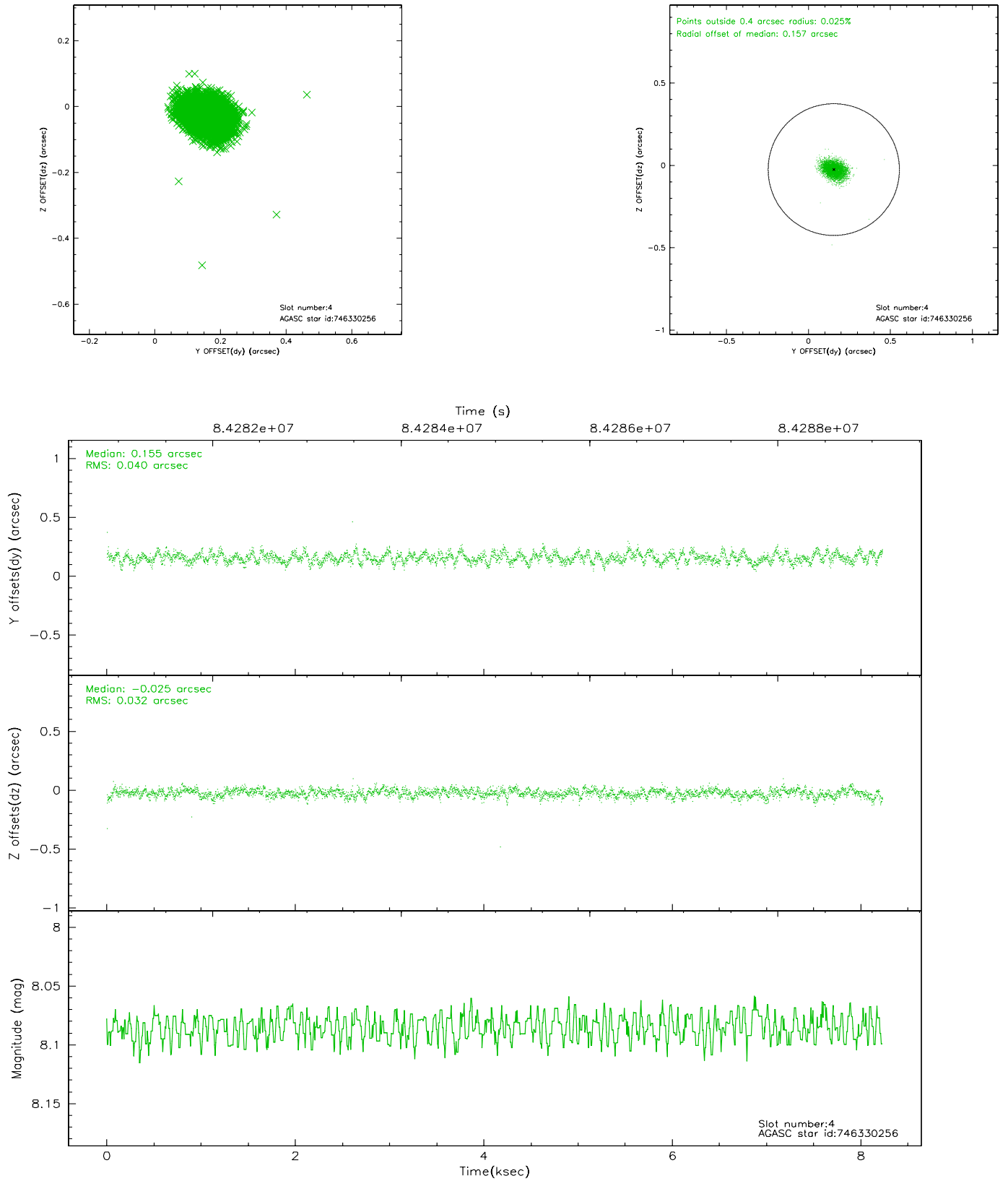
slot	status	id	mag	n_pts	med_dy	med_dz	dr1	dr2	ra	dec	mean_y	mean_z
0	FID	ACIS-I-2	7.15	2008	-0.045	-0.037	0.009	0.015	0.000000	0.000000	-755.84	-882.68
1	FID	ACIS-I-4	7.18	2008	-0.066	0.043	0.006	0.010	0.000000	0.000000	2157.84	1023.26
2	FID	ACIS-I-5	7.23	2008	0.010	0.064	0.009	0.015	0.000000	0.000000	-1808.65	1021.51
3	GUIDE	746455152	7.80	4015	-0.186	0.044	0.051	0.080	278.447893	-9.976732	-2122.86	1132.76
4	GUIDE	746330256	8.09	4015	0.155	-0.025	0.053	0.087	277.634401	-10.863955	1115.54	-1697.15
5	GUIDE	746462456	8.39	4015	-0.071	0.202	0.066	0.107	278.652171	-10.530173	-140.27	1883.94
6	GUIDE	746455112	8.92	4014	0.204	-0.216	0.081	0.132	278.266531	-10.703234	502.00	528.92
7	GUIDE	746338464	9.46	4014	-0.103	-0.003	0.100	0.162	277.427613	-10.292647	-927.96	-2464.38

2.4 Star Slots

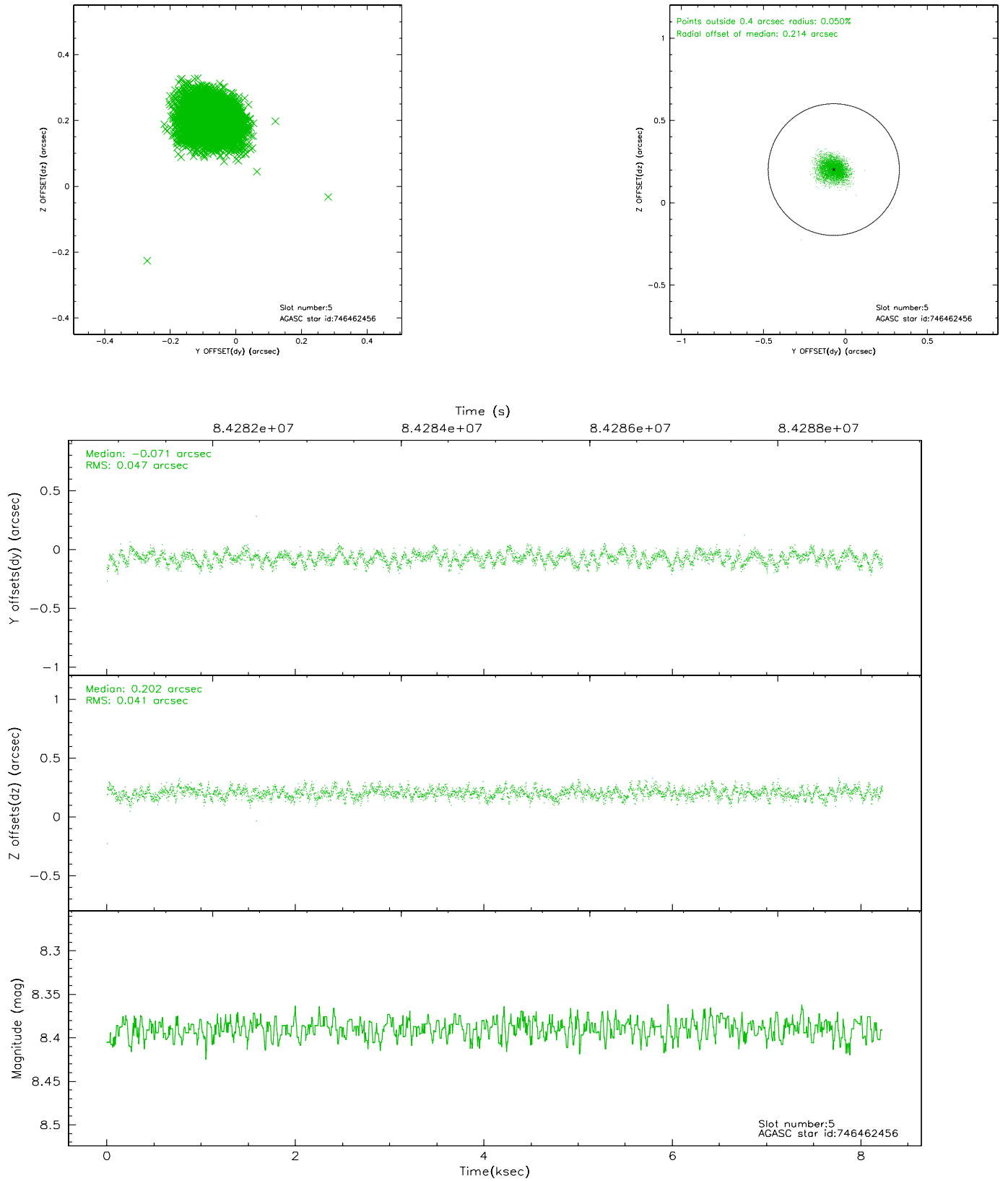
2.4.1 Slot 3



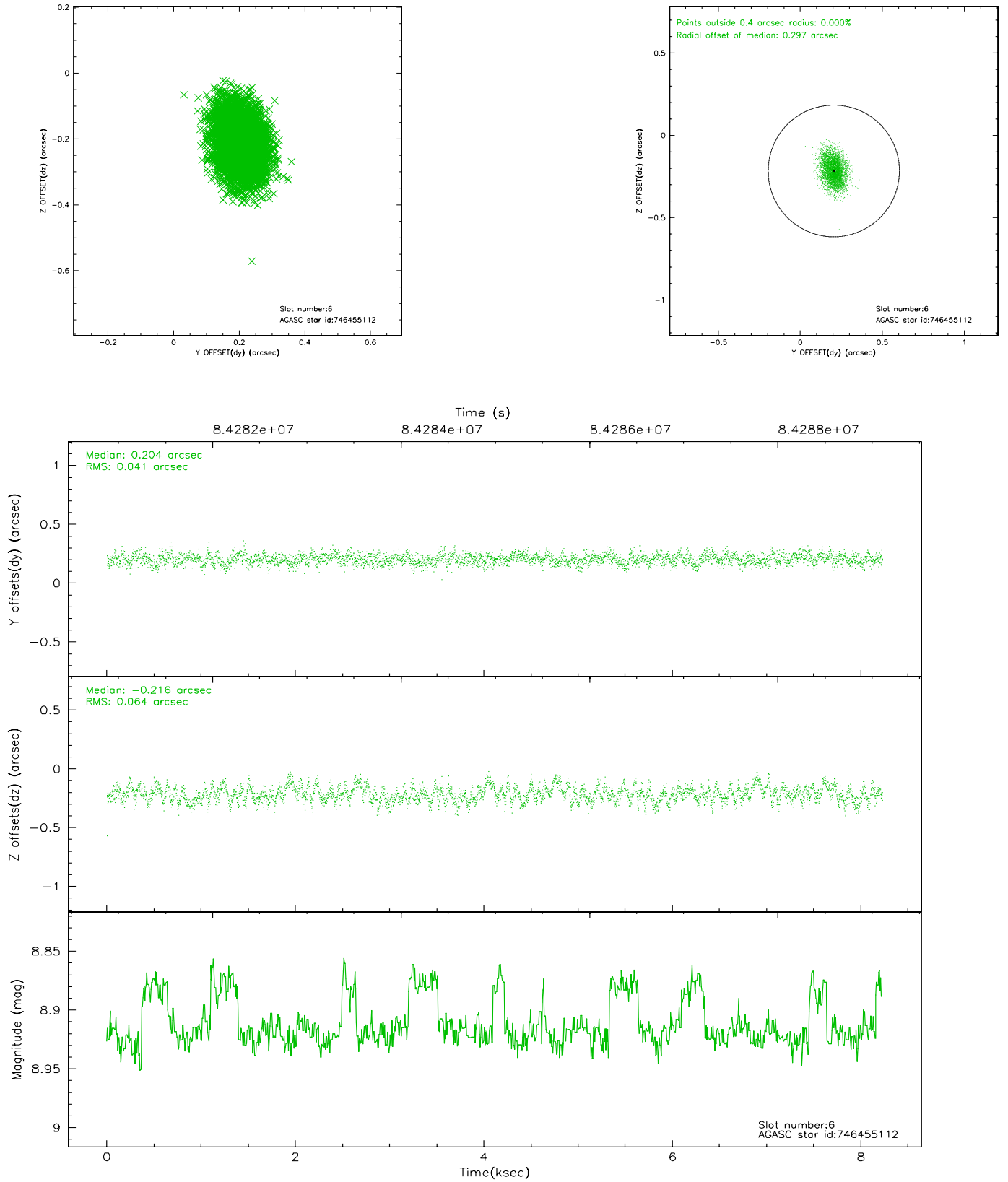
2.4.2 Slot 4



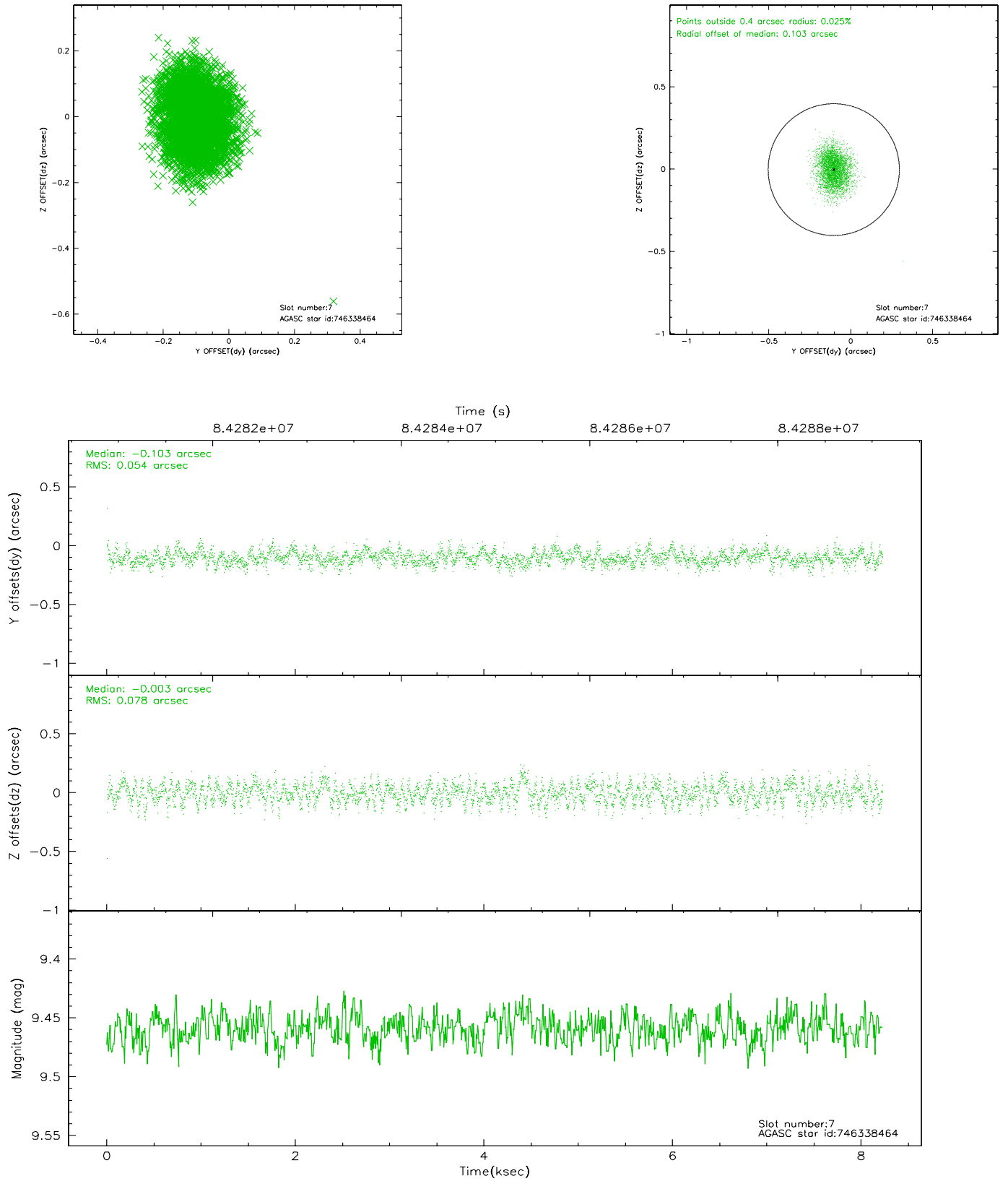
2.4.3 Slot 5



2.4.4 Slot 6

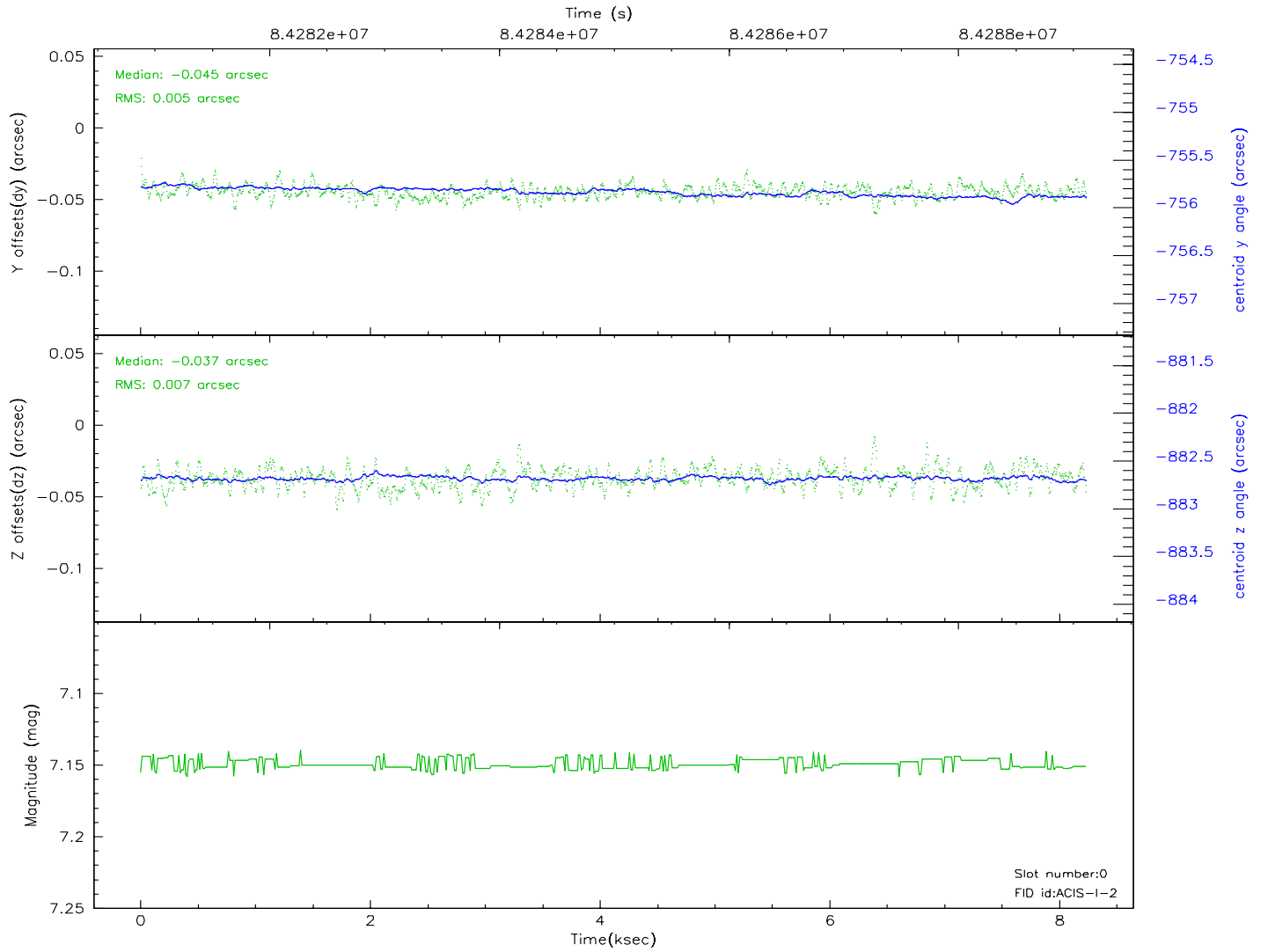
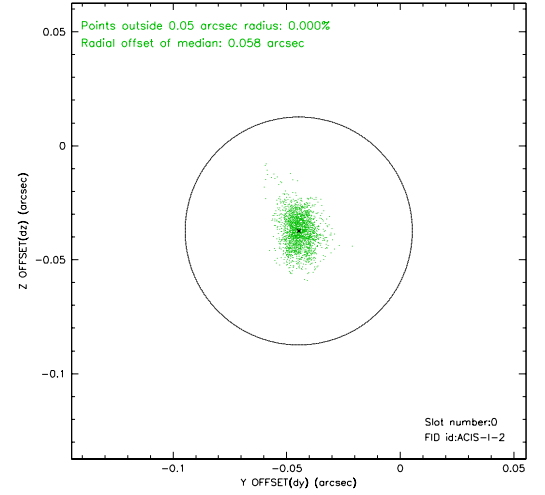
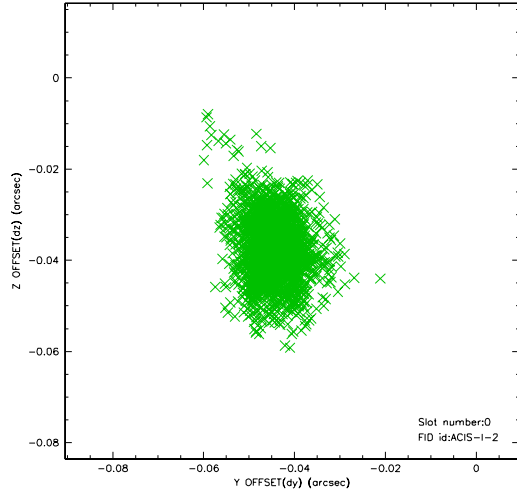


2.4.5 Slot 7

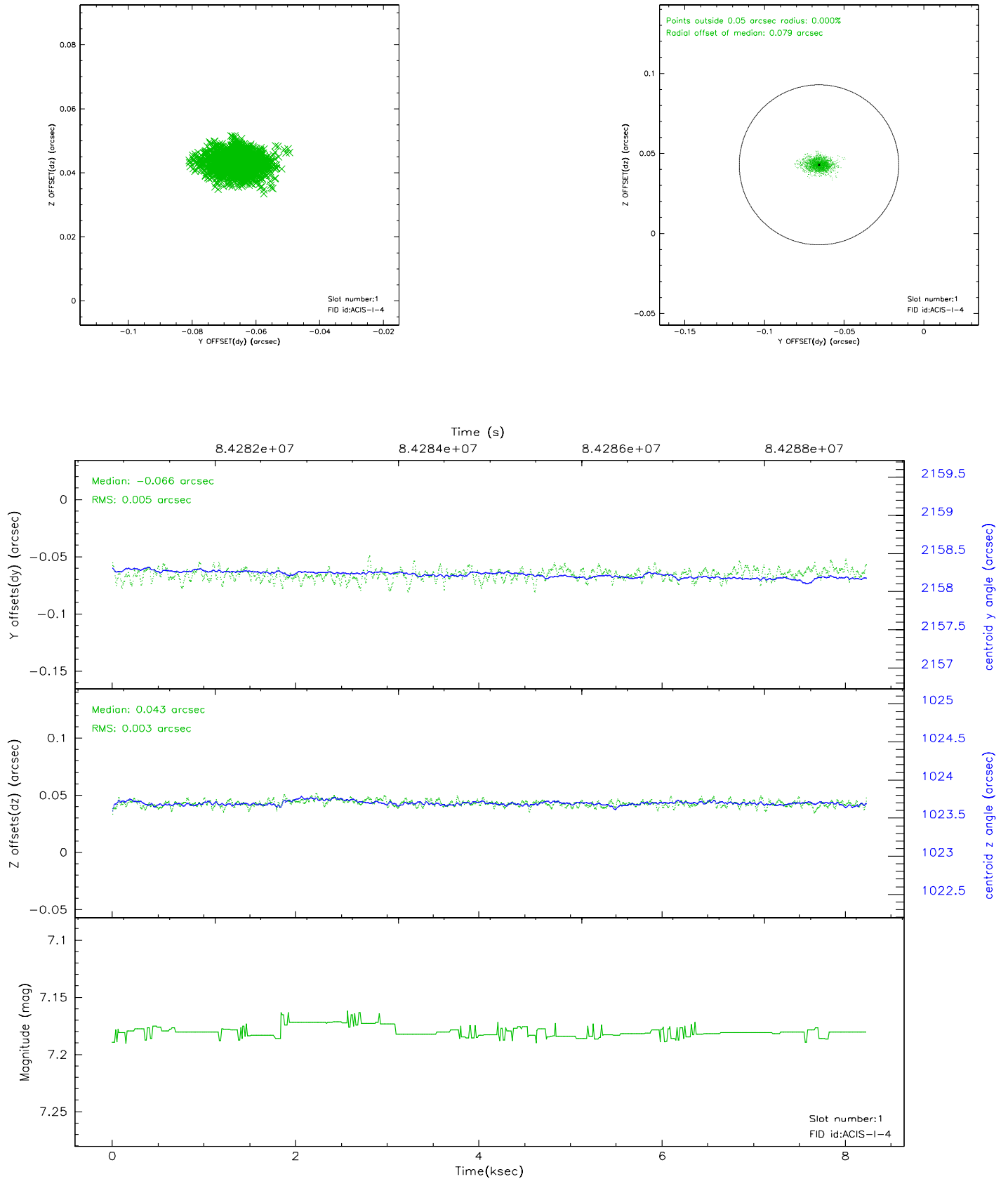


2.5 FID Slots

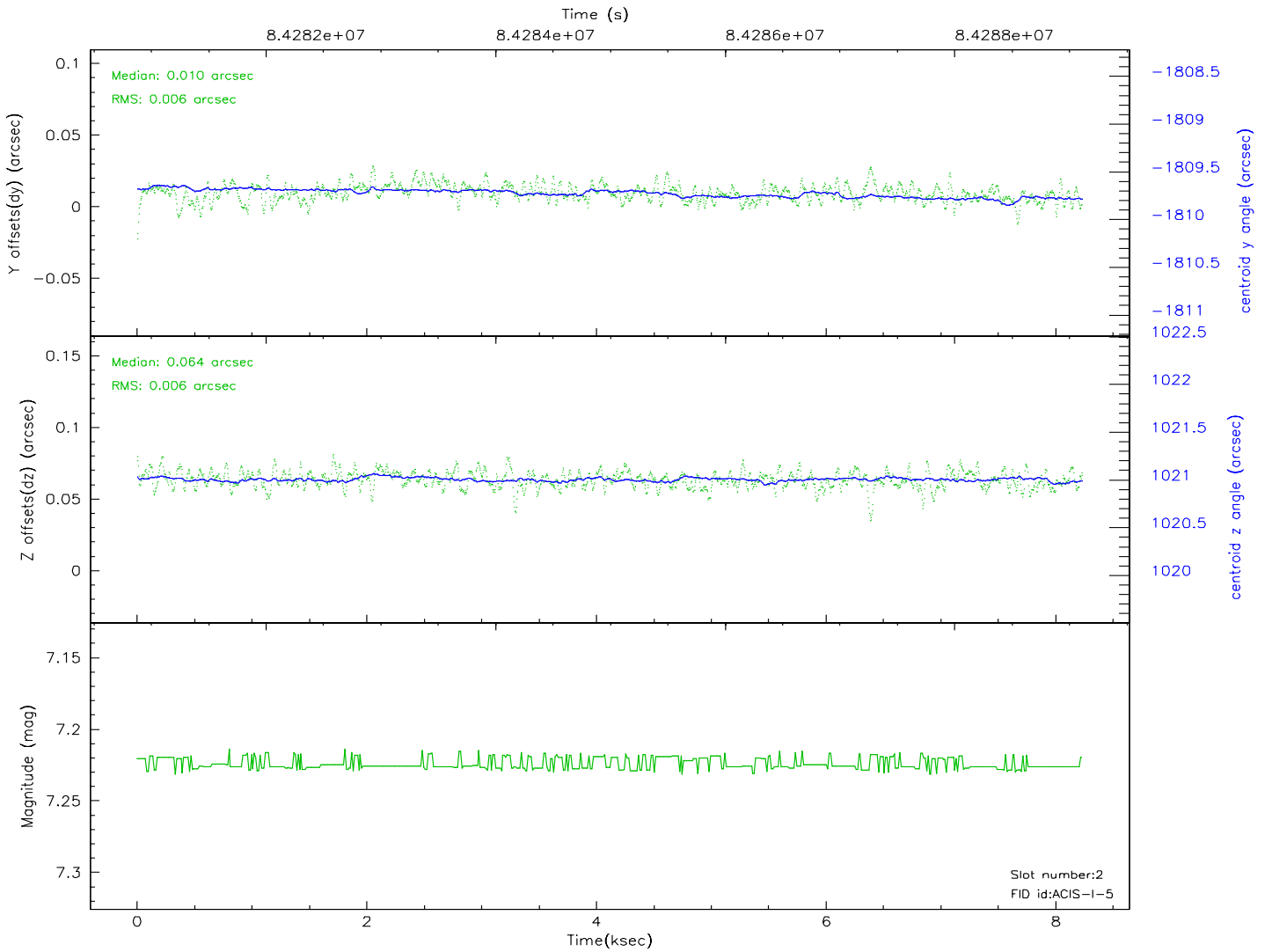
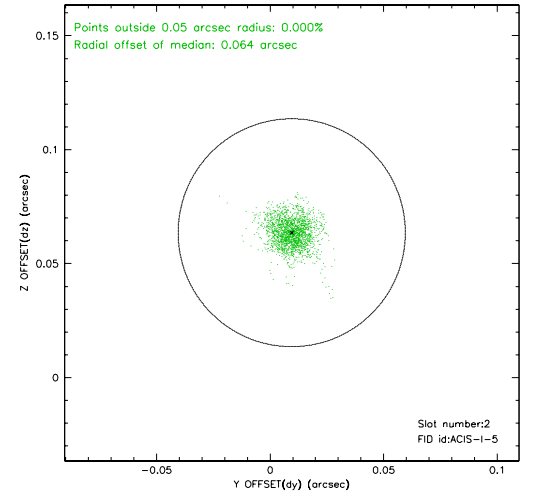
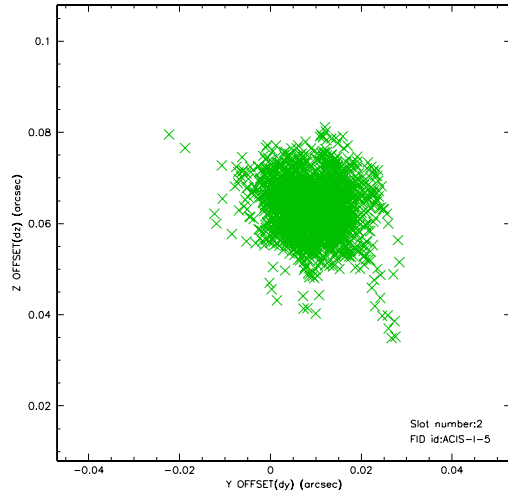
2.5.1 Slot 0



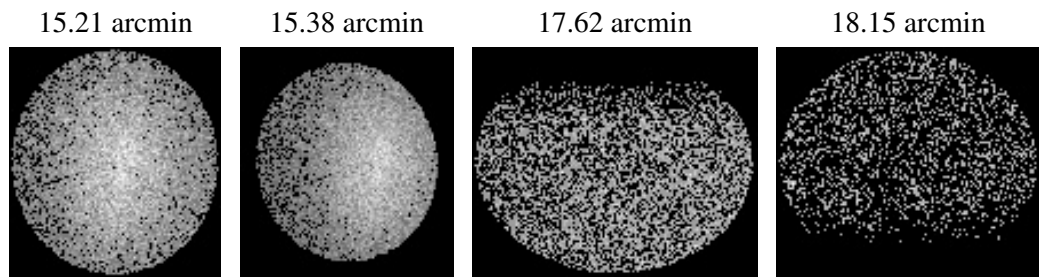
2.5.2 Slot 1



2.5.3 Slot 2



3 Point Sources



A Summary

A.1 Status

V&V Scientist	Jen Lauer
V&V Date (YYYY-MM-DD)	2007.06.06
V&V Edition	1
V&V Disposition and Status	OK
V&V Charge Time	7.504

A.2 Comments

Spike in count rate from about 10 counts per second to about 100 - 300 counts per second between 4 and 8 ksec into the observation. Most of this time period is not included in the good time interval, and therefore is not in the Level 2 data products.