

V&V Reference Report

L2 ASCDS Version : 10.4.1

Observation 18352 - L2 Version 1
Chandra X-Ray Center

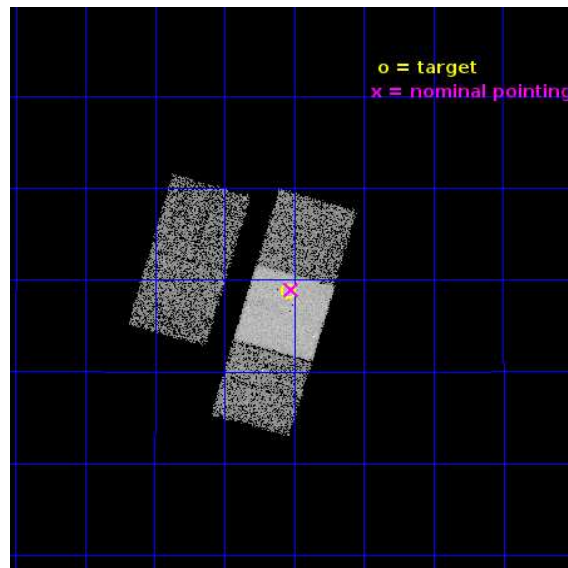
L2 Processing Date : Aug 27 2015

Contents

1	Front	2
2	OBI	3
2.1	OBI	3
2.1.1	Images	3
2.1.2	Bias	3
2.1.3	Parameters	4
2.1.4	Events	4
2.2	Compared Parameters	5
2.3	Aspect	6
2.4	Star Slots	9
2.4.1	Slot 3	9
2.4.2	Slot 4	10
2.4.3	Slot 5	11
2.4.4	Slot 6	12
2.4.5	Slot 7	13
2.5	FID Slots	14
2.5.1	Slot 0	14
2.5.2	Slot 1	15
2.5.3	Slot 2	16
A	Summary	17
A.1	Status	17
A.2	Comments	17

1 Front

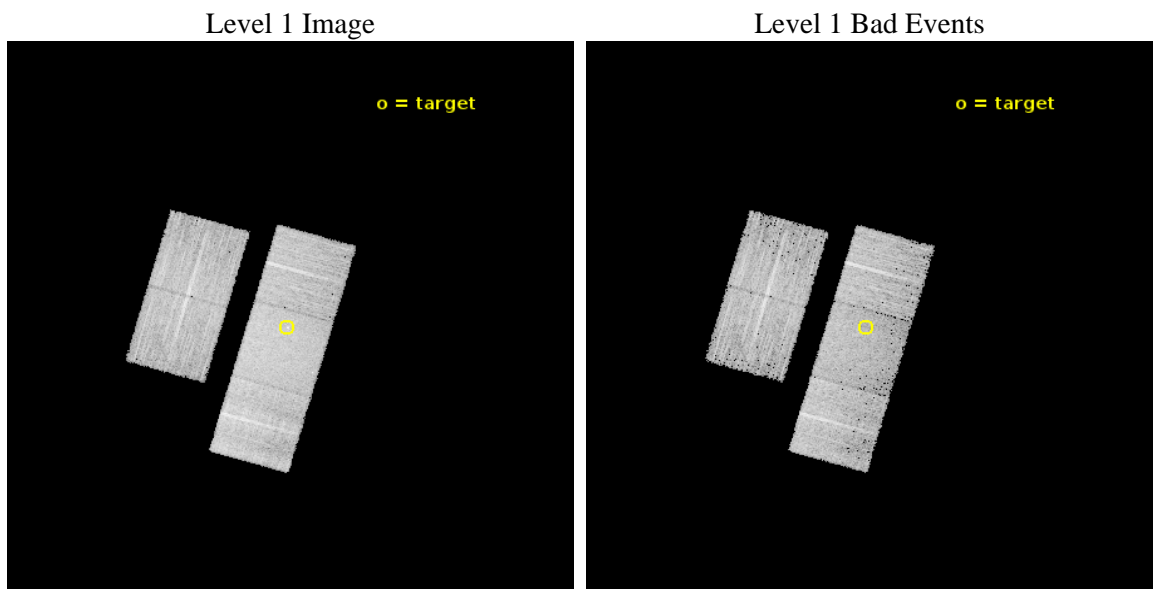
seq_num	703280	Sequence number
obs_id	18352	Observation id
title	Simultaneous Chandra and NuSTAR Observations of the Highly Obscured AGN Candidate in NGC660.	Proposal title
observer	Miss Ady Annuar	Principal investigator
object	NGC 660	Source name
dtcycle	0	
cycle	P	events from which exps? Prim/Second/Both
ra_targ	25.759583	Observer's specified target RA [deg]
dec_targ	13.645806	Observer's specified target Dec [deg]
ra_nom	25.755047270247	Nominal RA [deg]
dec_nom	13.64888160346	Nominal Dec [deg]
roll_nom	106.15770491536	Nominal Roll [deg]
revision	1	Processing version of data
ontime	10124.600077987	Sum of GTIs [s]
livetime	9992.3147243457	Livetime [s]
ontime2	10124.600077987	Sum of GTIs [s]
ontime3	10124.600077987	Sum of GTIs [s]
ontime6	10124.600077987	Sum of GTIs [s]
ontime7	10124.600077987	Sum of GTIs [s]
ontime8	10124.600077987	Sum of GTIs [s]
l2events	50250	Number of level 2 events



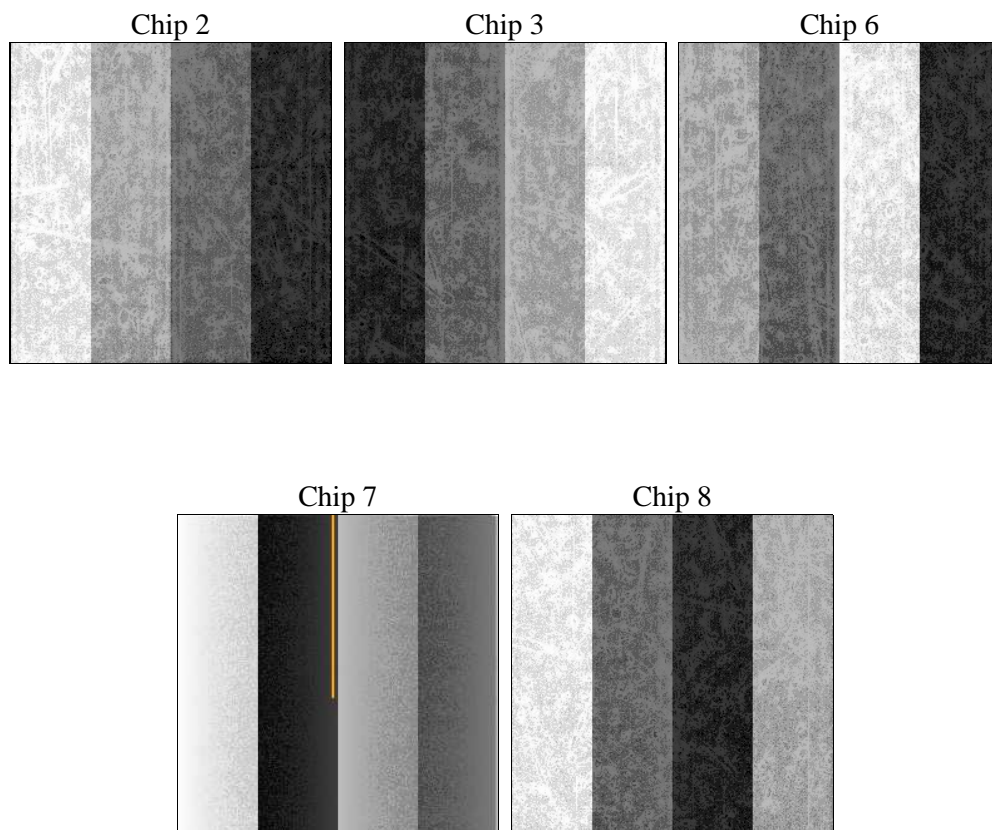
2 OBI

2.1 OBI

2.1.1 Images



2.1.2 Bias



2.1.3 Parameters

obi_num	1	Obi number	sched_exp_time	10087.153000	[s] Scheduled observation exposure time
ascdsver	10.4.1	Processing system revision	ontime	10124.600077987	Sum of GTIs [s]
caldsver	4.6.8	 	ontime2	10124.600077987	Sum of GTIs [s]
date	2015-08-27T13:43:57	Date and time of file creation	ontime3	10124.600077987	Sum of GTIs [s]
revision	1	Processing version of data	ontime6	10124.600077987	Sum of GTIs [s]
			ontime7	10124.600077987	Sum of GTIs [s]
			ontime8	10124.600077987	Sum of GTIs [s]
			l1events	302801	Number of level 1 events

2.1.4 Events

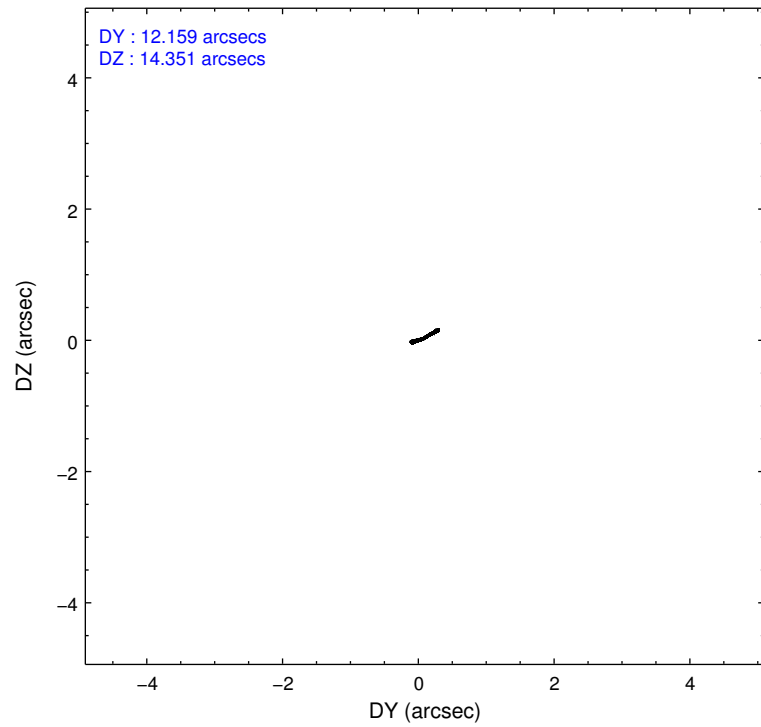
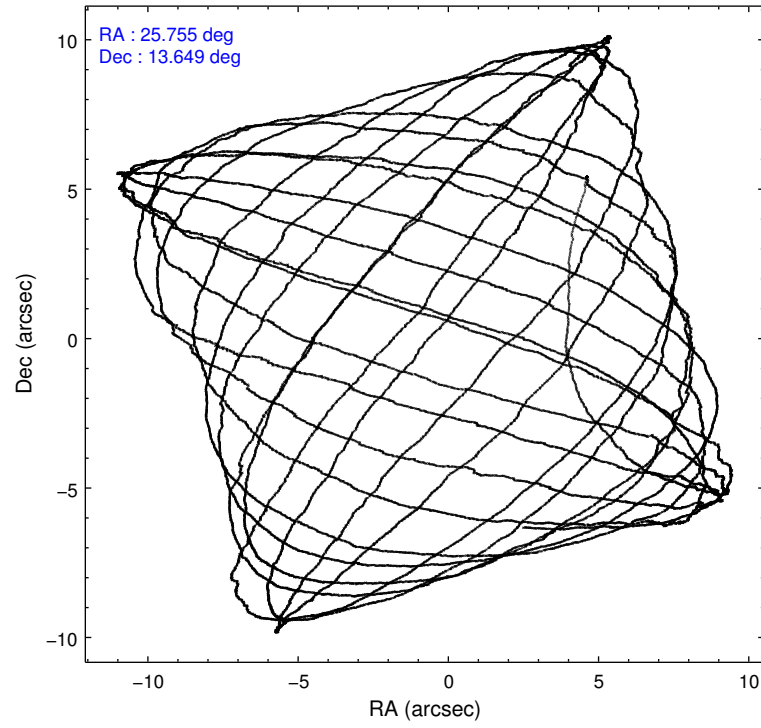
	ccd 2	ccd 3	ccd 6	ccd 7	ccd 8
level 1 events	53048	52220	56345	71617	69571
rejected events	47662	46826	50151	41515	52645
rejected %	89%	89%	89%	57%	75%

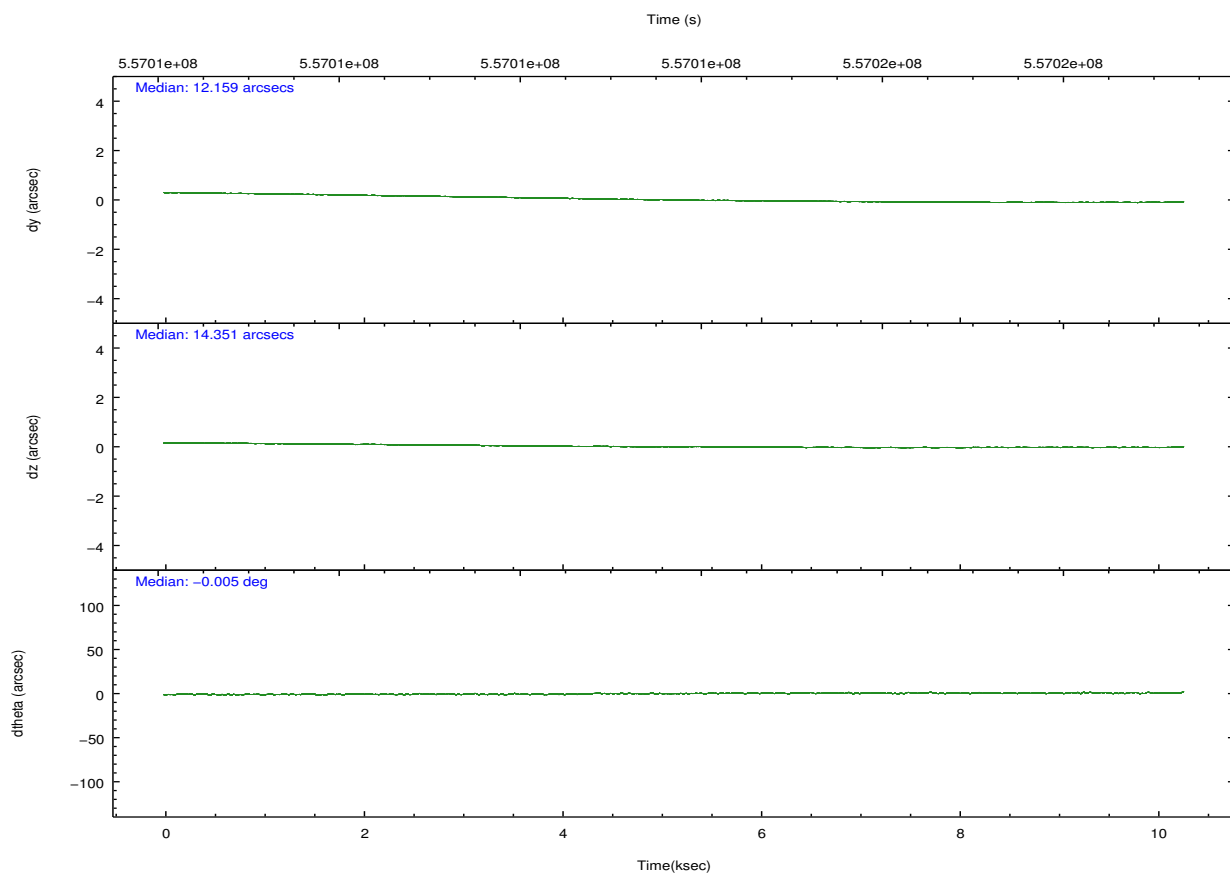
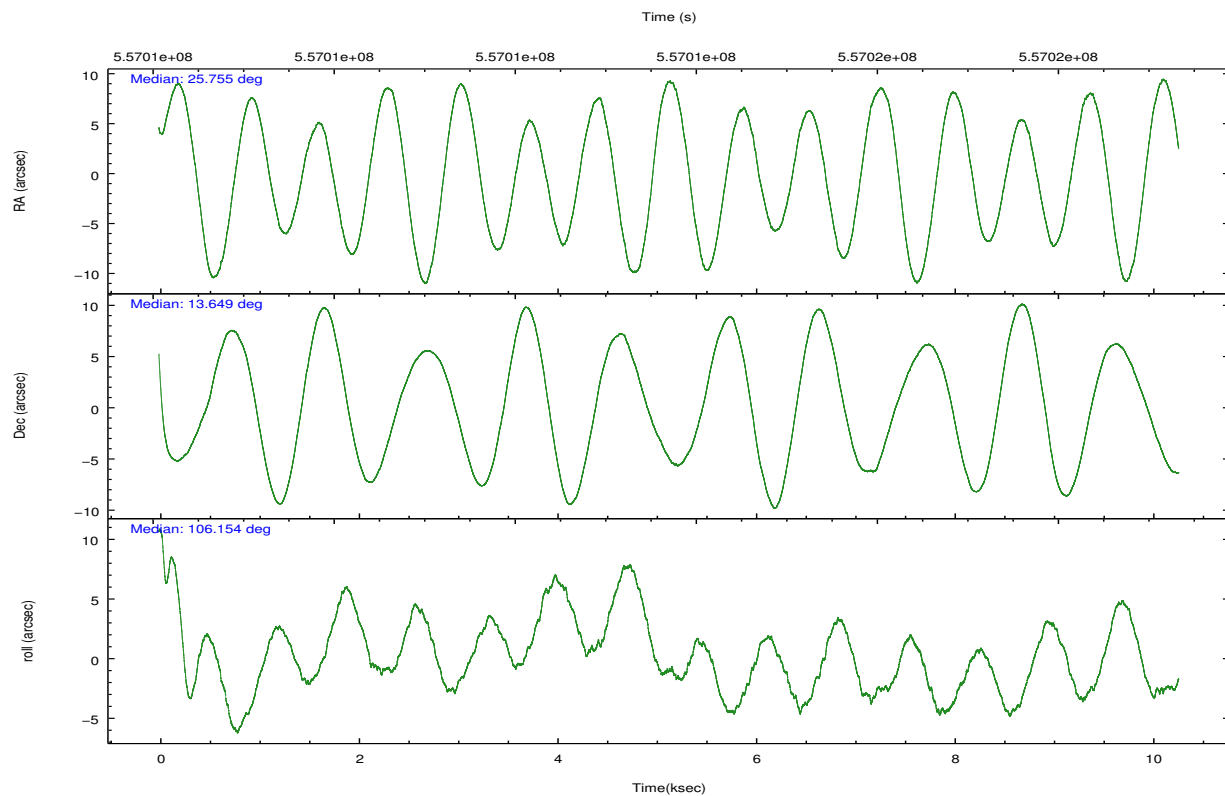
	ccd 2	ccd 3	ccd 6	ccd 7	ccd 8
grade 0 events	1934	1827	1976	2571	4588
	3%	3%	3%	3%	6%
grade 1 events	27	25	21	95	42
	0%	0%	0%	0%	0%
grade 2 events	1195	1221	1503	6313	4322
	2%	2%	2%	8%	6%
grade 3 events	567	557	560	2257	1646
	1%	1%	0%	3%	2%
grade 4 events	537	574	540	2212	1517
	1%	1%	0%	3%	2%
grade 5 events	2075	2659	2482	6790	3818
	3%	5%	4%	9%	5%
grade 6 events	1155	1220	1619	16786	4858
	2%	2%	2%	23%	6%
grade 7 events	45558	44137	47644	34593	48780
	85%	84%	84%	48%	70%

2.2 Compared Parameters

Parameter	Planned	Actual	Parameter	Planned	Actual
Instrument	ACIS	ACIS	Obspar format version number	7	7
Detector	ACIS-23678	ACIS-23678	Obspar file type	PREDICTED	ACTUAL
Grating	NONE	NONE	Obspar update status	NONE	UPDATED
Data mode	FAINT	FAINT	Number of optional ACIS chips dropped	0	0
Observation mode	POINTING	POINTING	On-chip summing requested	N	N
[deg] Pointing RA	25.775613	25.75504727024747	Subarray requested	NONE	NONE
[deg] Pointing Dec	13.630164	13.6488816034597	Alternating exposures requested	N	N
[deg] Pointing Roll	105.996222	106.157704915356	[s] Primary exposure time	0.000000	3.1
[mm] SIM focus pos	-0.684267	-0.6828225247311905			
[mm] SIM defocus	0	0.001444936568705701			
[mm] SIM translation stage pos	-190.132523	-190.1400660498719			
[mm] SIM translation stage offset	0	0.00754346686406393			
[s] Observation start time (MET)	557008739.184000	557007174.57921			
Observation start date	2015-08-26T20:37:51	2015-08-26T20:12:54			
[s] Observation end time (MET)	557018826.184000	557019042.54238			
Observation end date	2015-08-26T23:25:58	2015-08-26T23:30:42			
Read mode	TIMED	TIMED			

2.3 Aspect



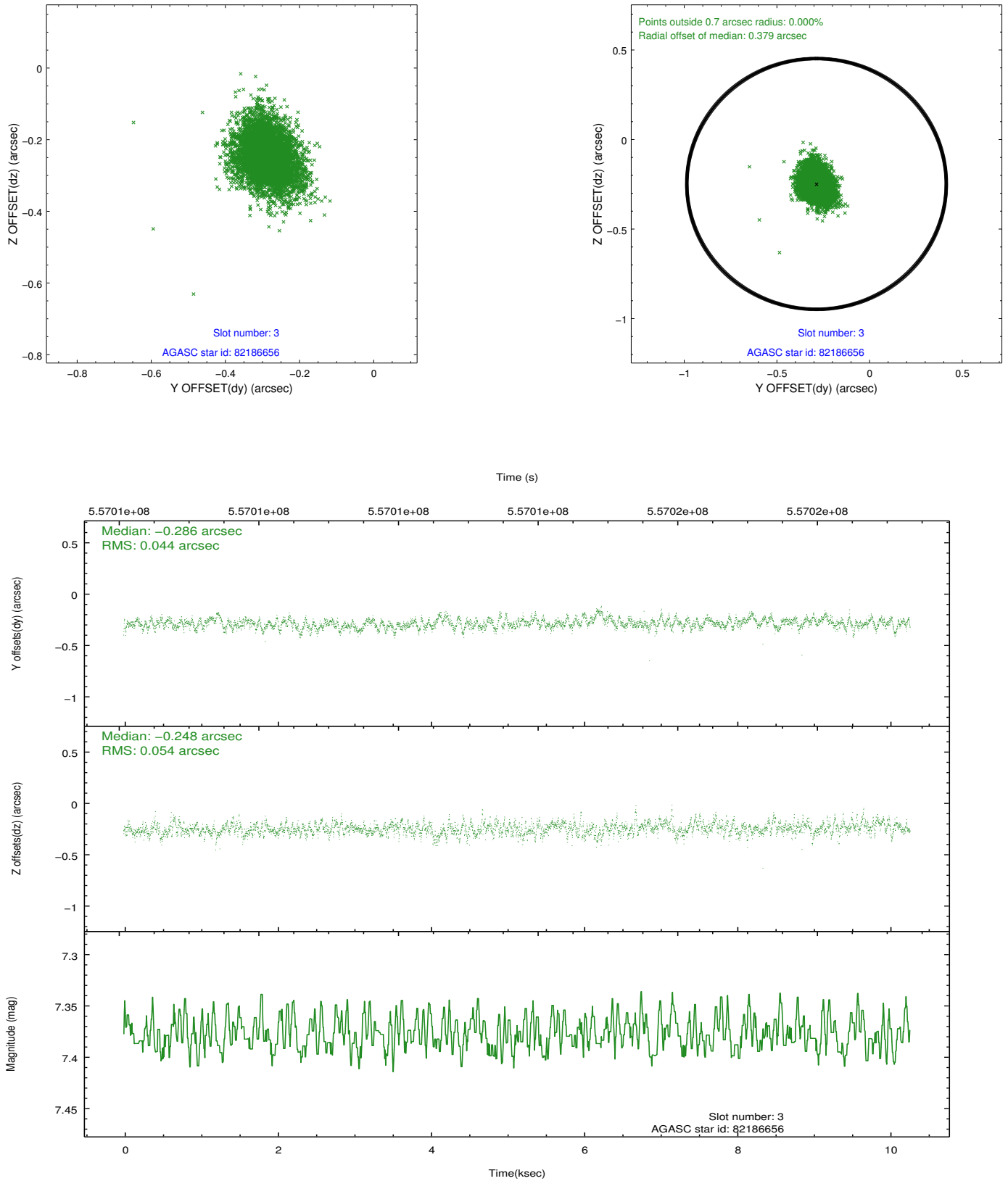


Slot Statistics

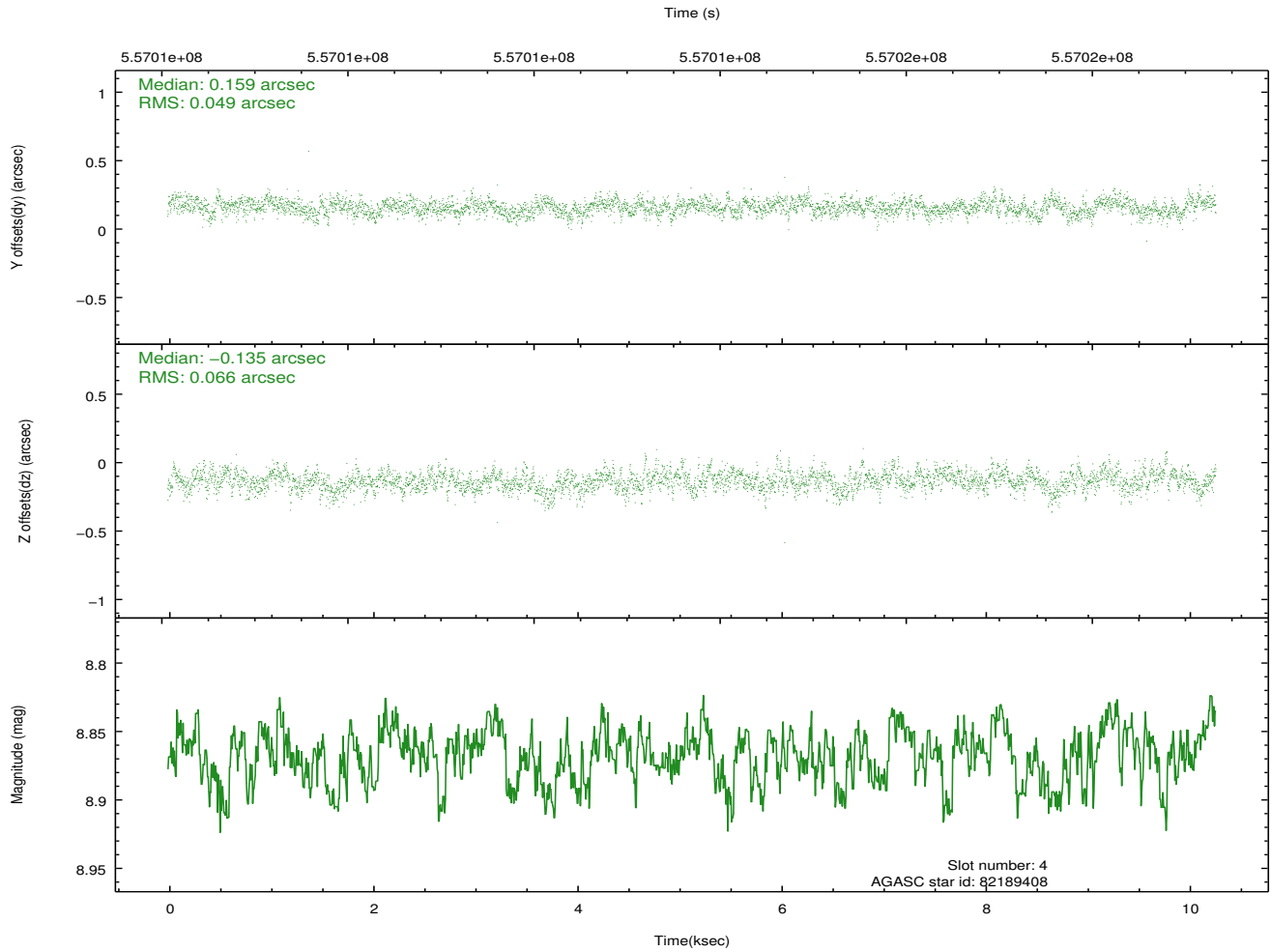
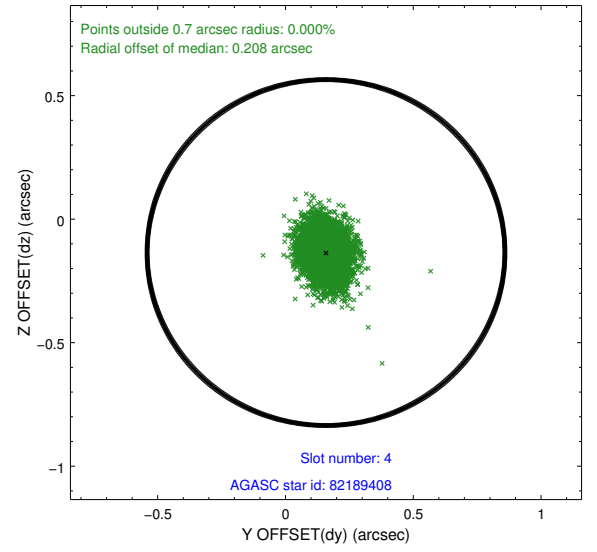
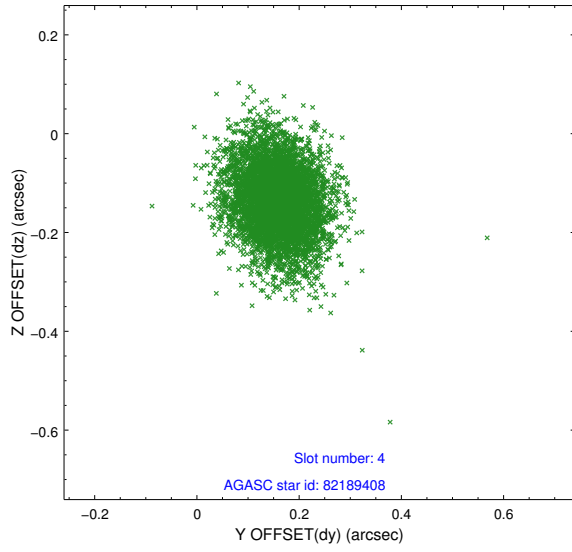
slot	status	used	id	mag	n_pts	med_dy	med_dz	dr1	dr2	ra	dec	mean_y	mean_z
0	FID		ACIS-S-2	7.12	2504	-0.072	-0.046	0.010	0.015	0.000000	0.000000	-765.14	-1735.80
1	FID		ACIS-S-4	7.22	2505	0.237	0.048	0.006	0.012	0.000000	0.000000	2148.19	172.28
2	FID		ACIS-S-5	7.25	2505	-0.196	0.008	0.009	0.014	0.000000	0.000000	-1817.47	166.45
3	GUIDE	used	82186656	7.38	5011	-0.286	-0.248	0.073	0.124	25.268579	13.773450	984.89	1561.63
4	GUIDE	used	82189408	8.87	5007	0.159	-0.135	0.085	0.145	25.276758	13.237916	-873.37	2069.77
5	GUIDE	used	82319672	9.00	5006	-0.071	-0.084	0.117	0.204	25.615508	13.734038	513.38	435.97
6	GUIDE	used	82320496	8.42	5011	-0.008	0.350	0.075	0.126	26.104669	14.056528	1159.61	-1526.39
7	GUIDE	used	82315088	9.17	5005	0.205	0.119	0.123	0.201	25.823162	12.979305	-2297.55	485.55

2.4 Star Slots

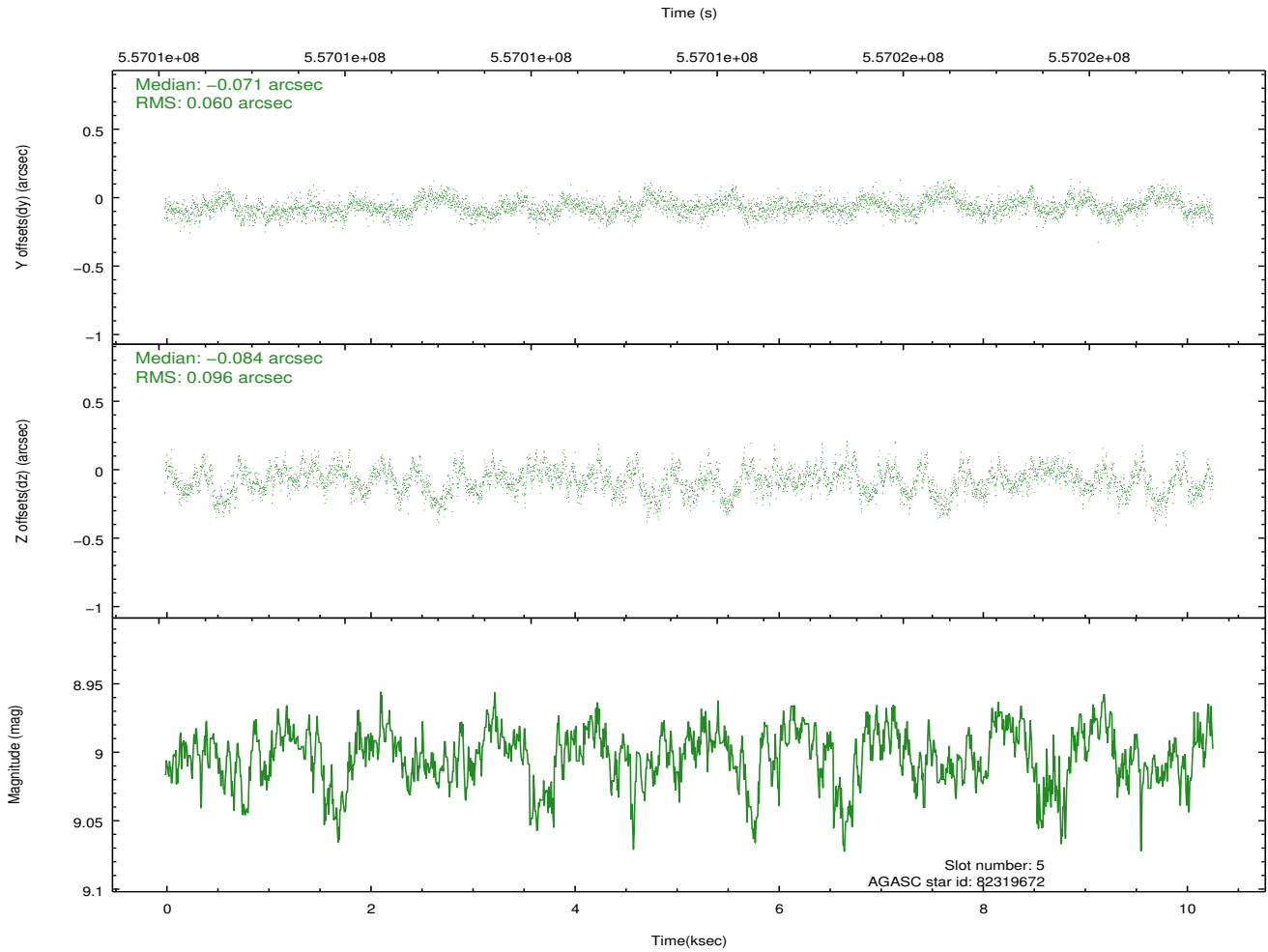
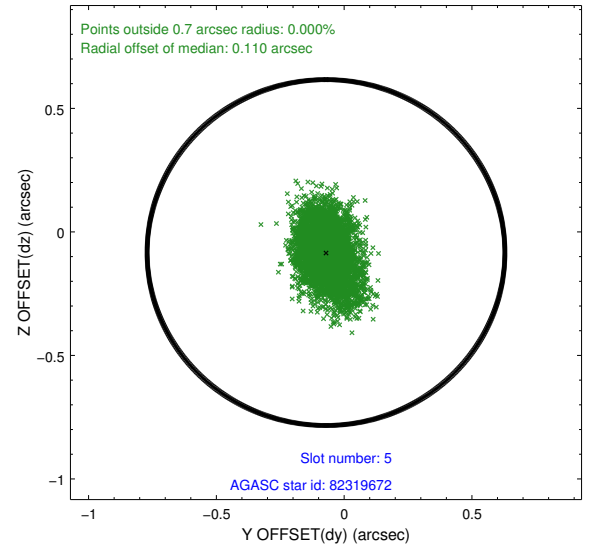
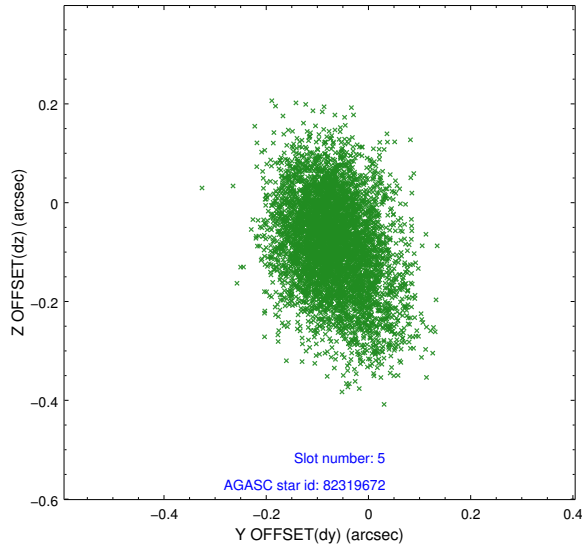
2.4.1 Slot 3



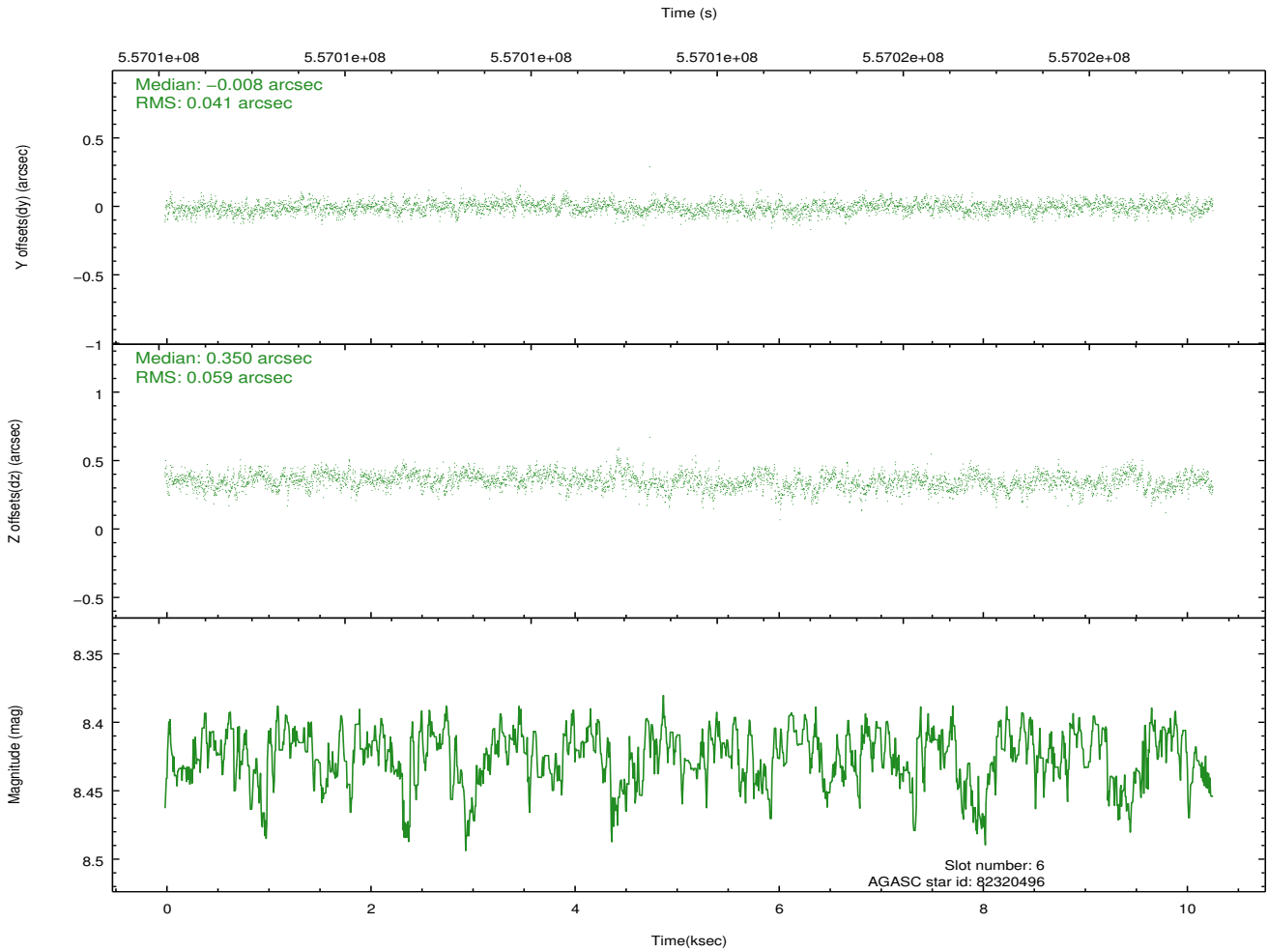
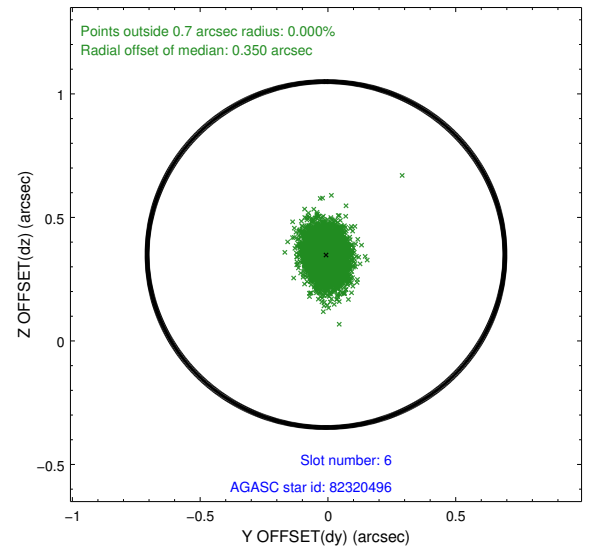
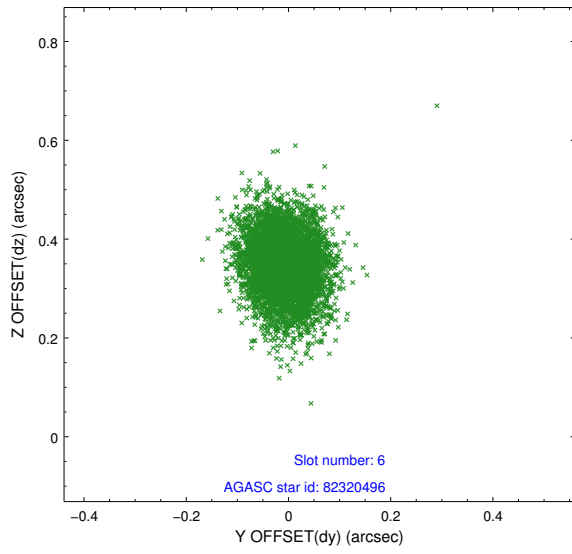
2.4.2 Slot 4



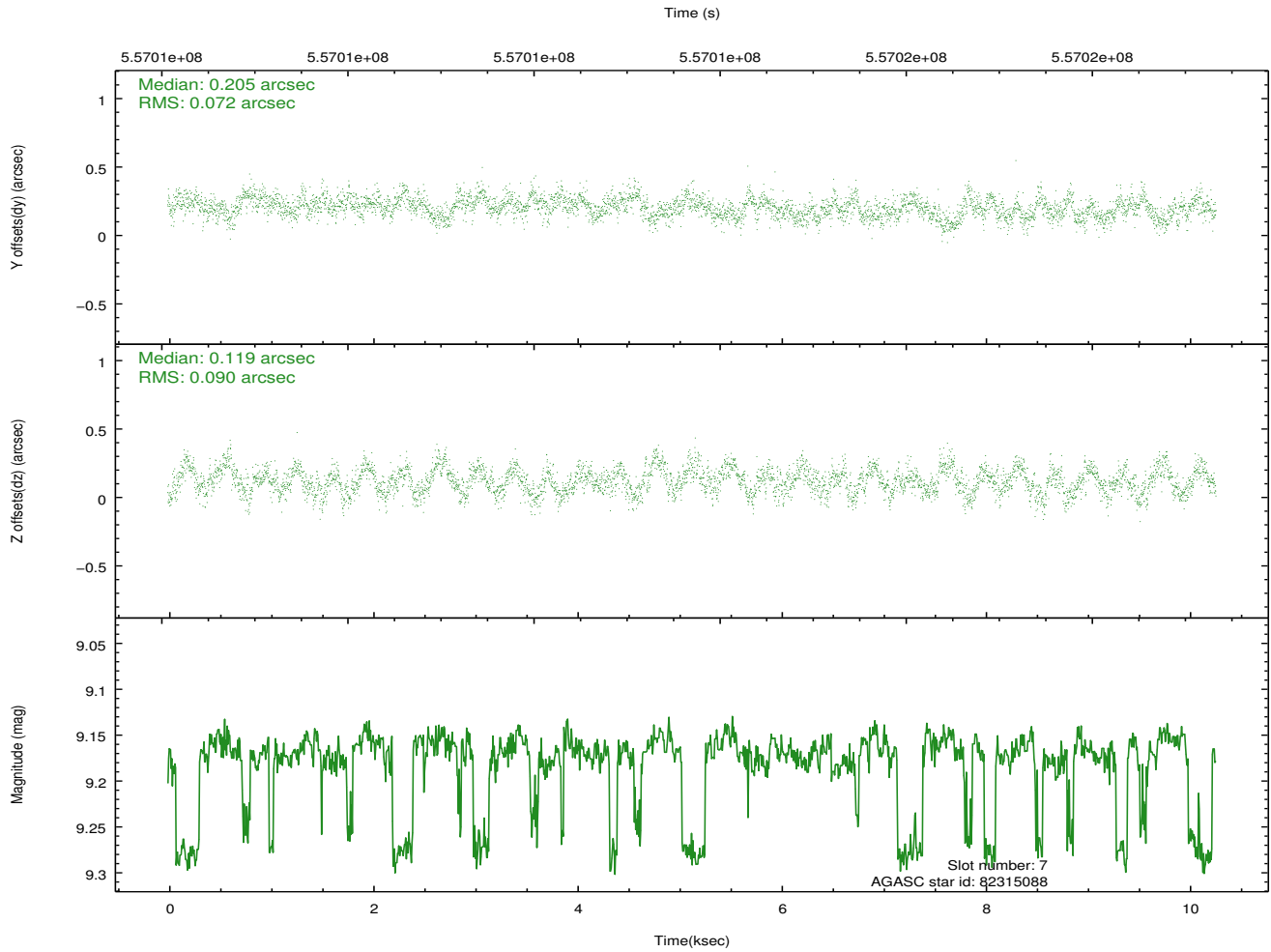
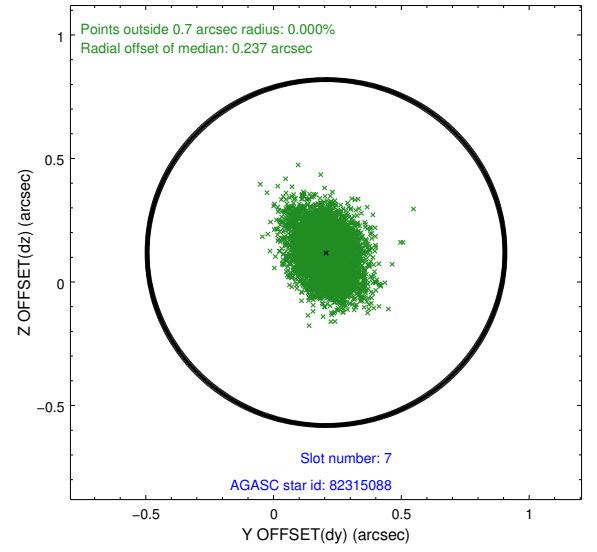
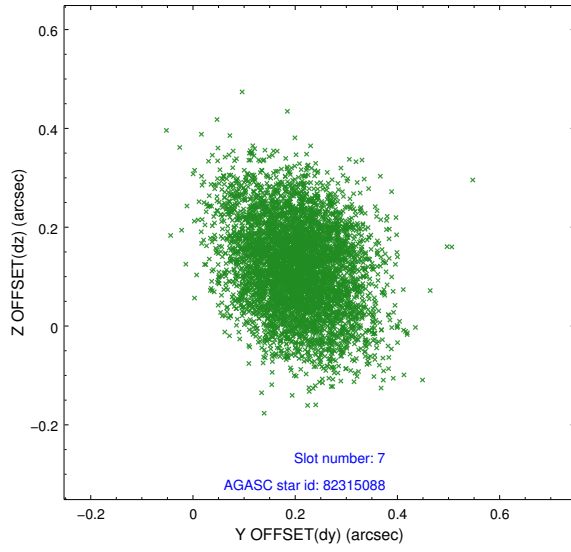
2.4.3 Slot 5



2.4.4 Slot 6

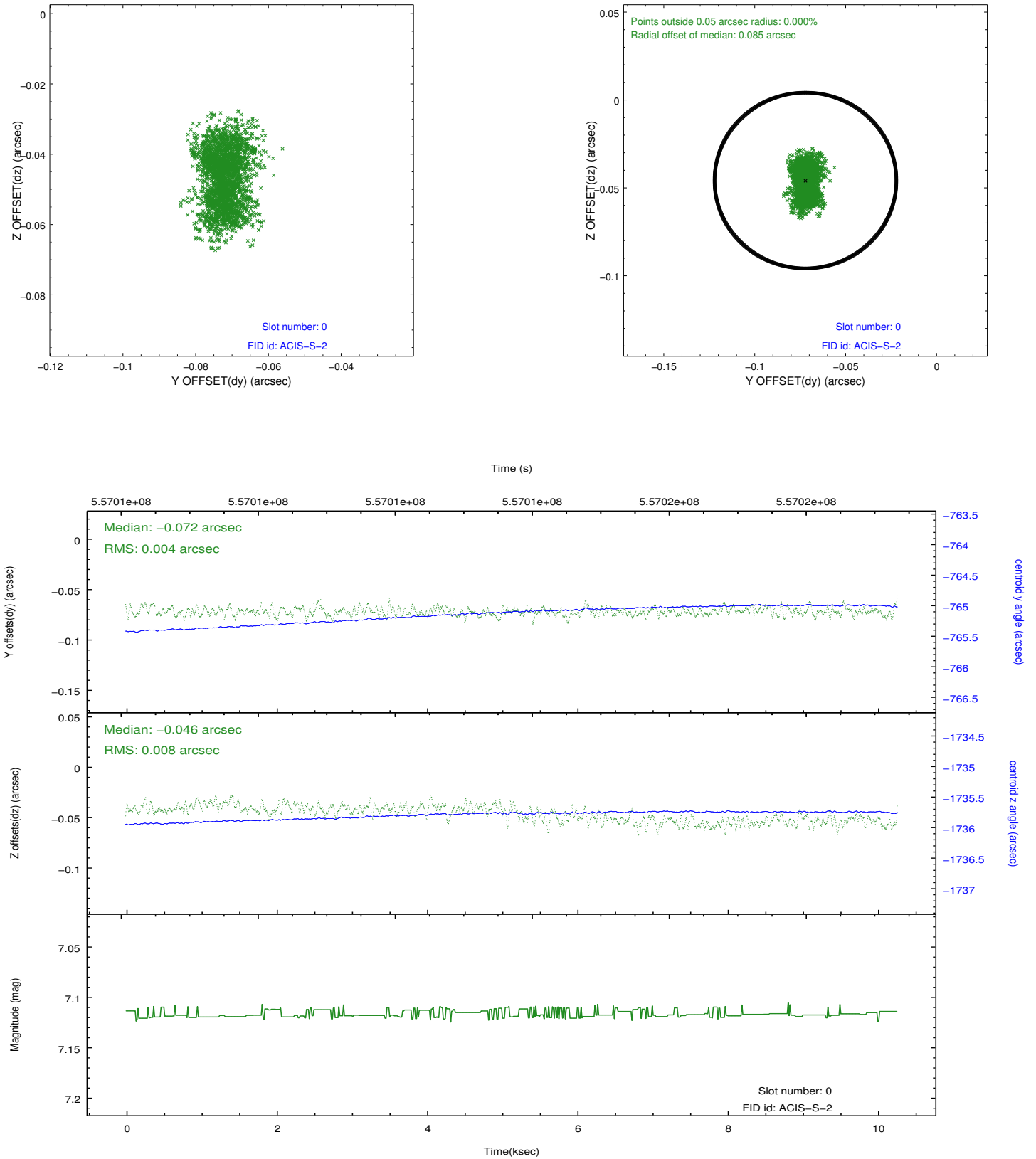


2.4.5 Slot 7

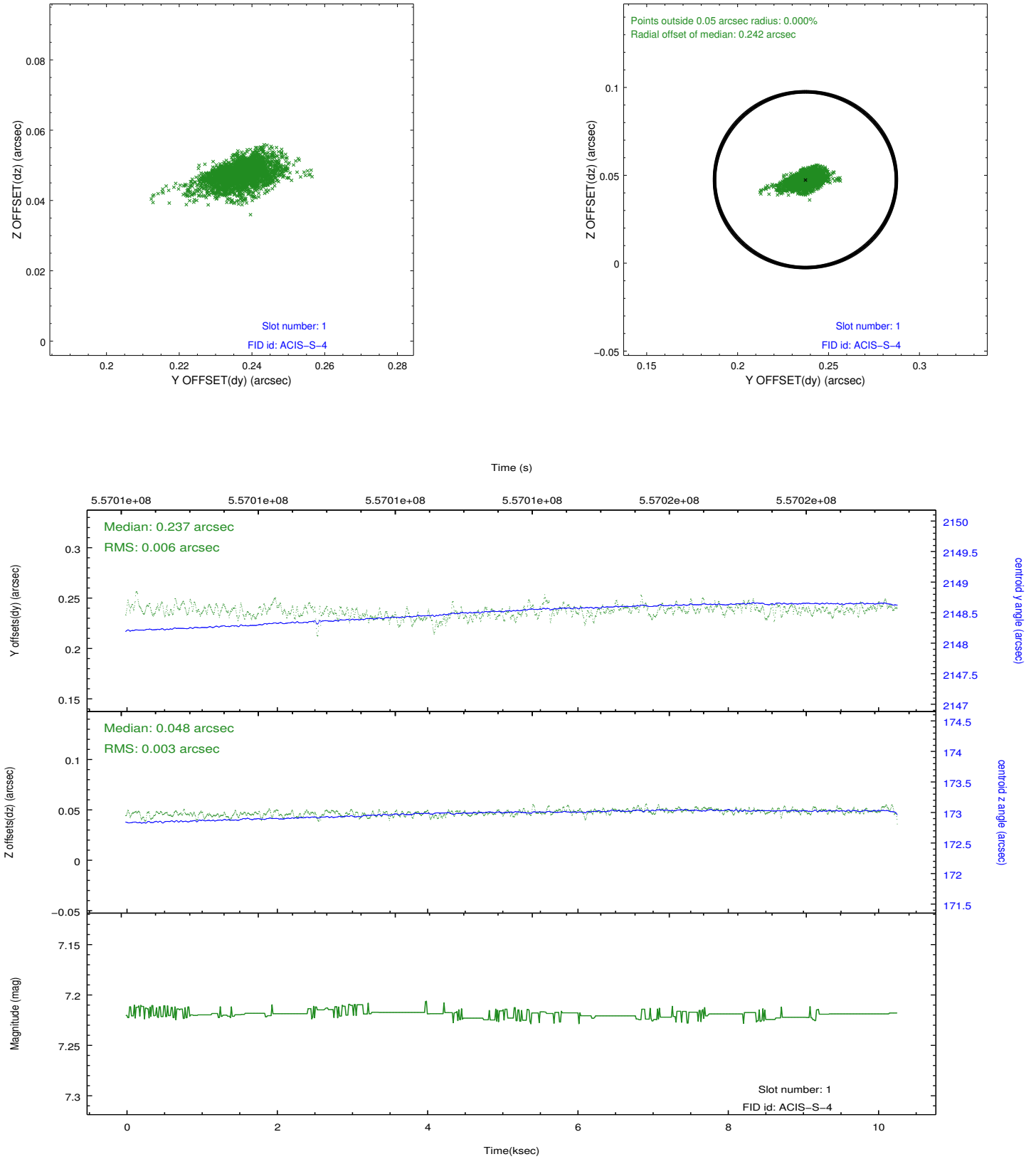


2.5 FID Slots

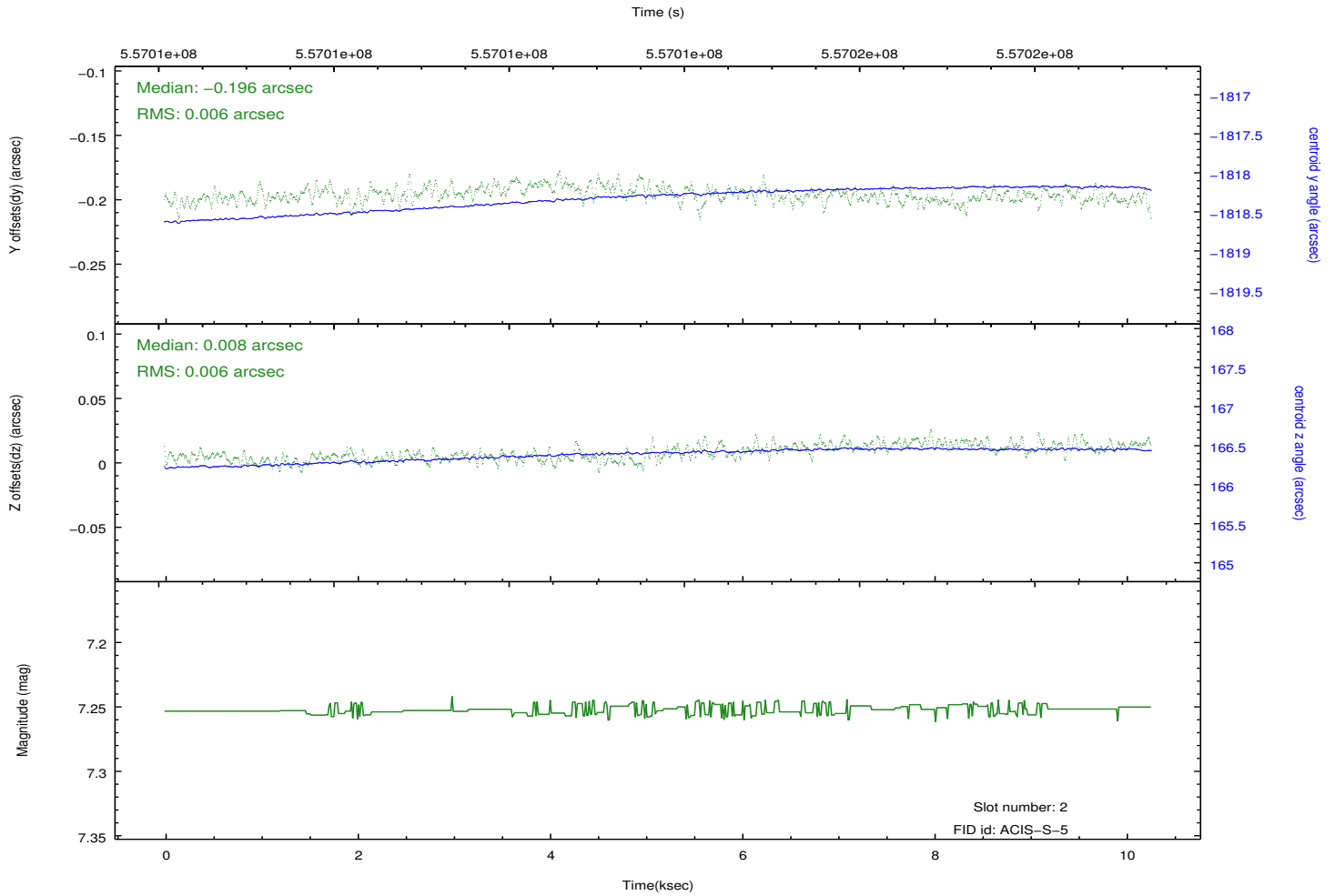
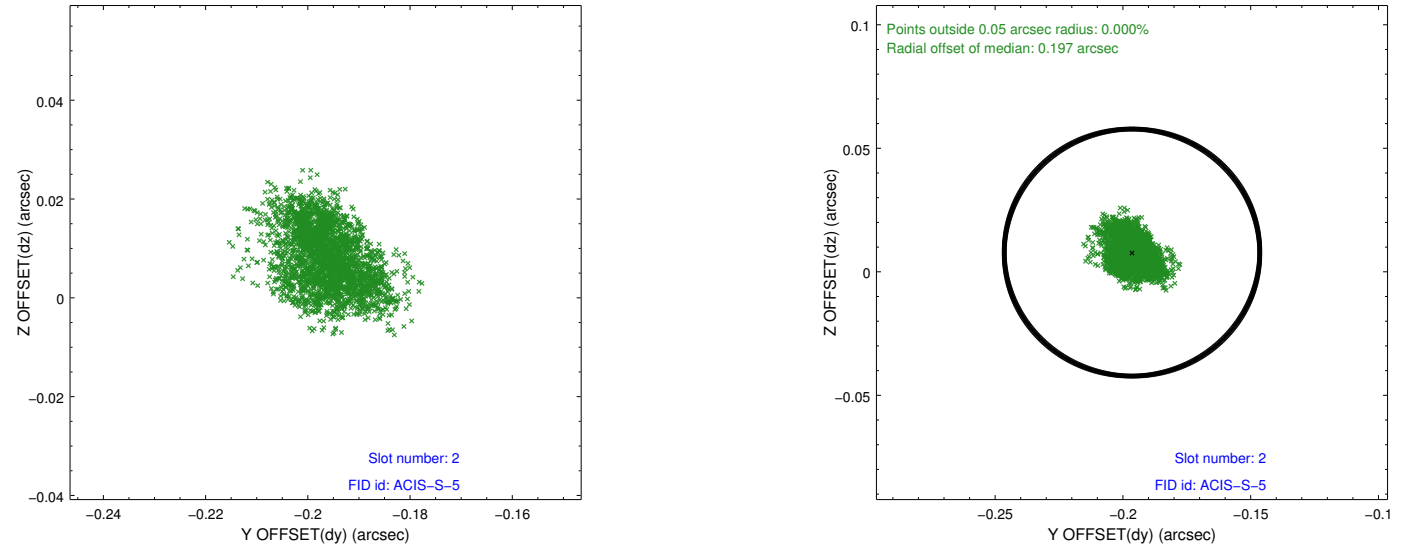
2.5.1 Slot 0



2.5.2 Slot 1



2.5.3 Slot 2



A Summary

A.1 Status

V&V Scientist	Jen Lauer
V&V Date (YYYY-MM-DD)	2015.08.27
V&V Edition	1
V&V Disposition and Status	OK
V&V Charge Time	10.124600077987

A.2 Comments