

V&V Reference Report

L2 ASCDS Version : 8.2.1

Observation 172 - L2 Version 4

Chandra X-Ray Center

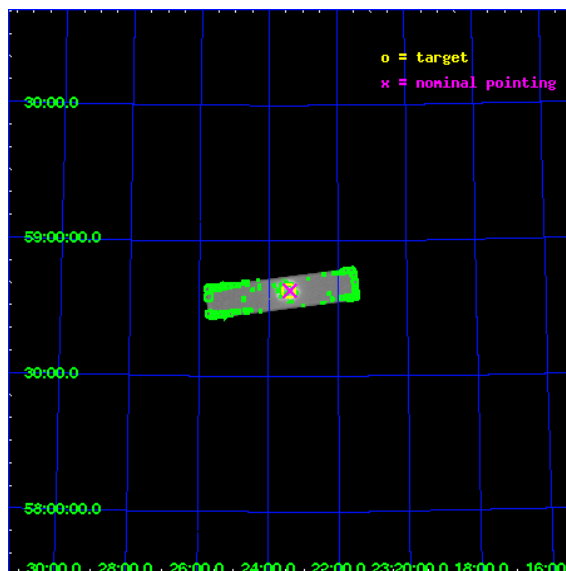
L2 Processing Date : Jan 13 2010

Contents

1	Front	2
2	OBI	3
2.1	OBI	3
2.1.1	Images	3
2.1.2	Parameters	4
2.1.3	Events	4
2.2	Compared Parameters	5
2.3	Aspect	6
2.4	Star Slots	9
2.4.1	Slot 3	9
2.4.2	Slot 4	10
2.4.3	Slot 5	11
2.4.4	Slot 6	12
2.4.5	Slot 7	13
2.5	FID Slots	14
2.5.1	Slot 0	14
2.5.2	Slot 1	15
2.5.3	Slot 2	16
3	Point Sources	17
A	Summary	18
A.1	Status	18
A.2	Comments	18

1 Front

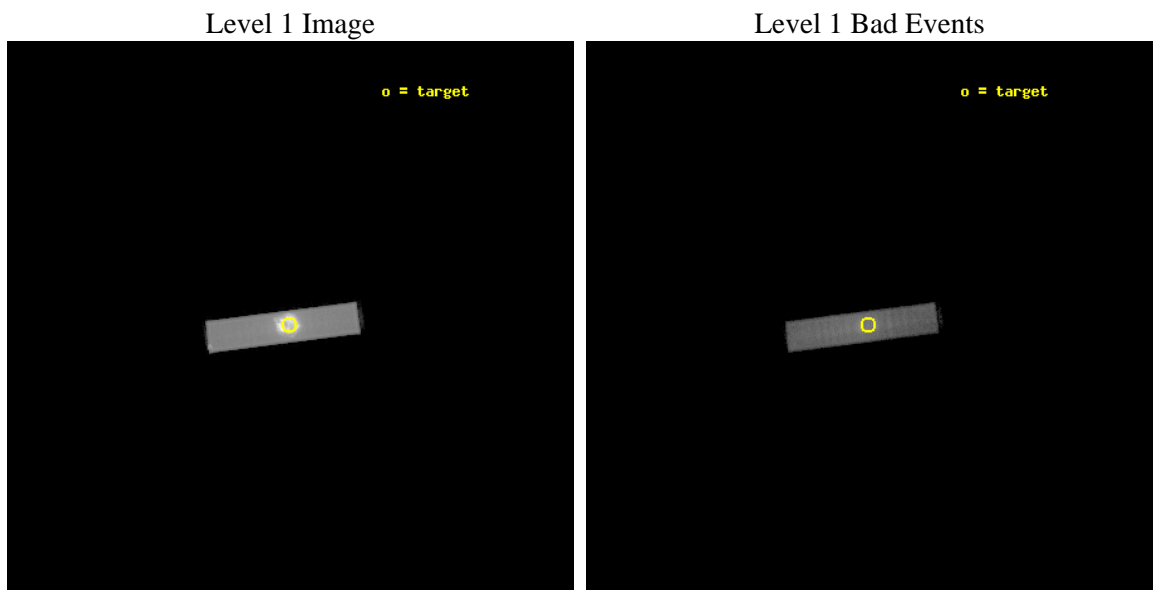
seq_num	590040	Sequence number
obs_id	172	Observation id
title	HRC RESPONSE TO CASA	Proposal title
observer	Dr. CXC Calibration	Principal investigator
object	CAS A [HRC-S, Offsets=0,0,0 CENTRAL MCP]	Source name
ra_targ	350.8575	Observer's specified target RA
dec_targ	58.814833	Observer's specified target Dec
ra_nom	350.84700446427	Nominal RA
dec_nom	58.816218823128	Nominal Dec
roll_nom	172.69052844838	Nominal Roll
revision	4	Processing version of data
ontime	9479.456590347	[s]
livetime	9357.8904381702	Ontime multiplied by DTCOR
l2events	1152942	Number of level 2 events



2 OBI

2.1 OBI

2.1.1 Images



2.1.2 Parameters

obi_num	0	Obi number	sched_exp_time	2000.000000	Scheduled observation exposure time
ascdsver	8.2.1	Processing system revision	ontime	9479.456590347	[s]
caldbver	4.1.5	 	l1events	1321795	Number of level 1 events
date	2010-01-13T04:56:27	Date and time of file creation			
revision	3	Processing version of data			

2.1.3 Events

Level 1 Events

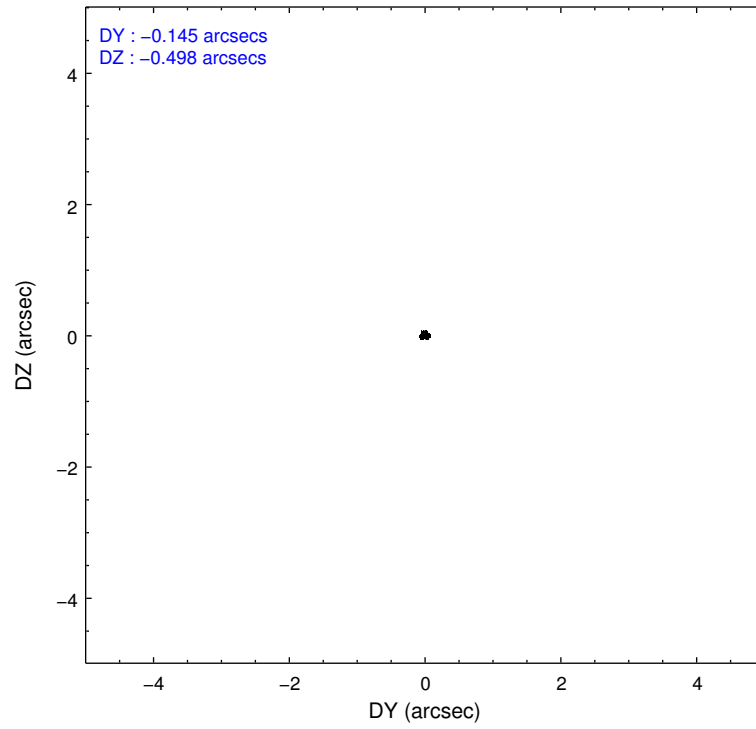
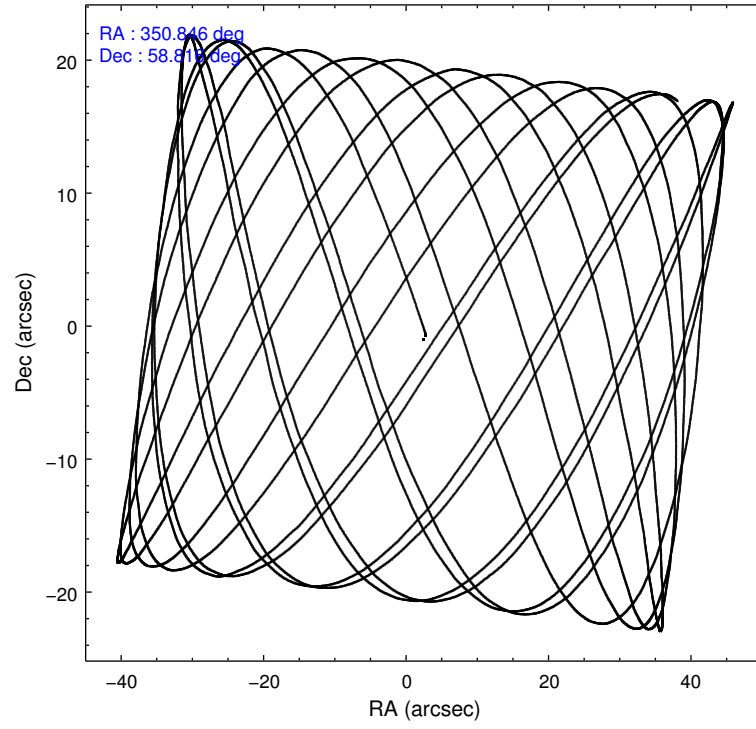
	segment 1	segment 2	segment 3
level 1 events	0	1321795	0
rejected events	0	137310	0
rejected %	0%	10%	0%

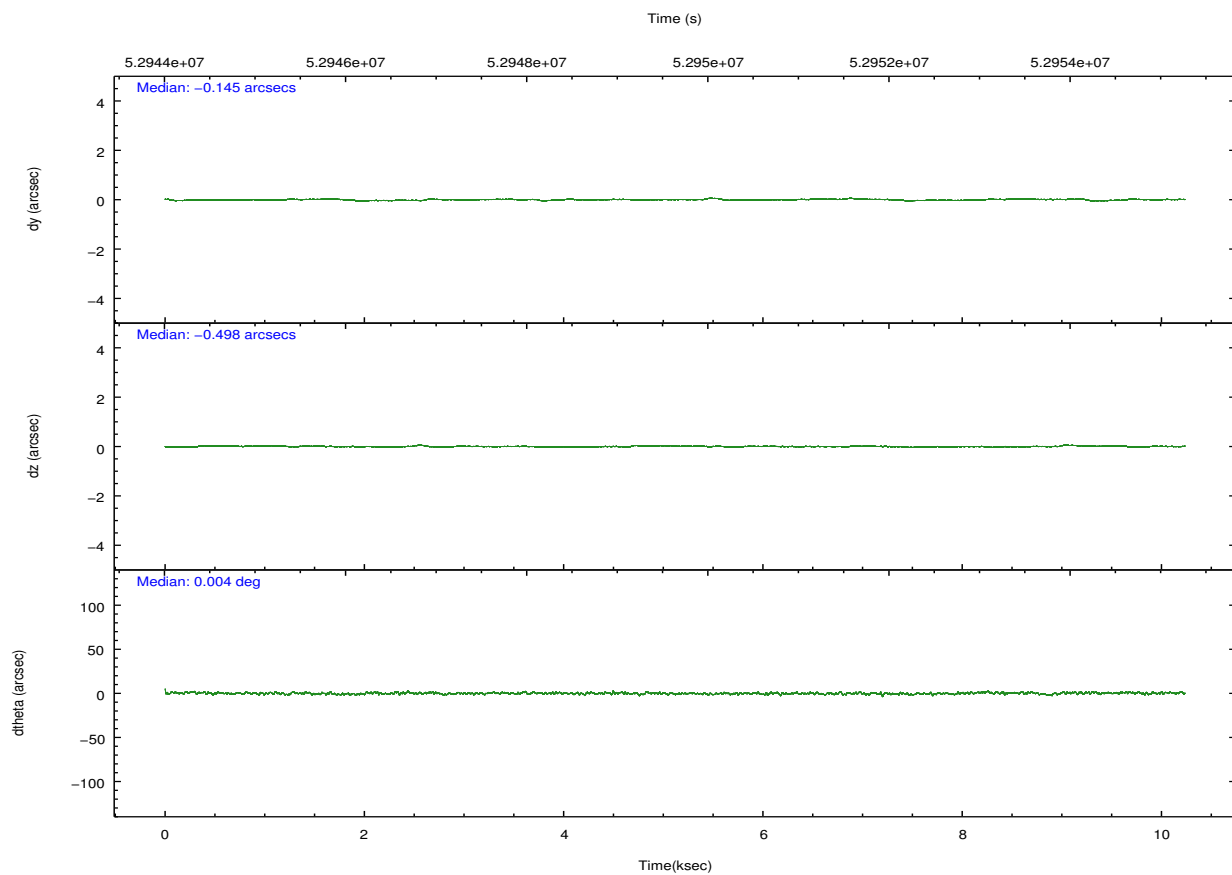
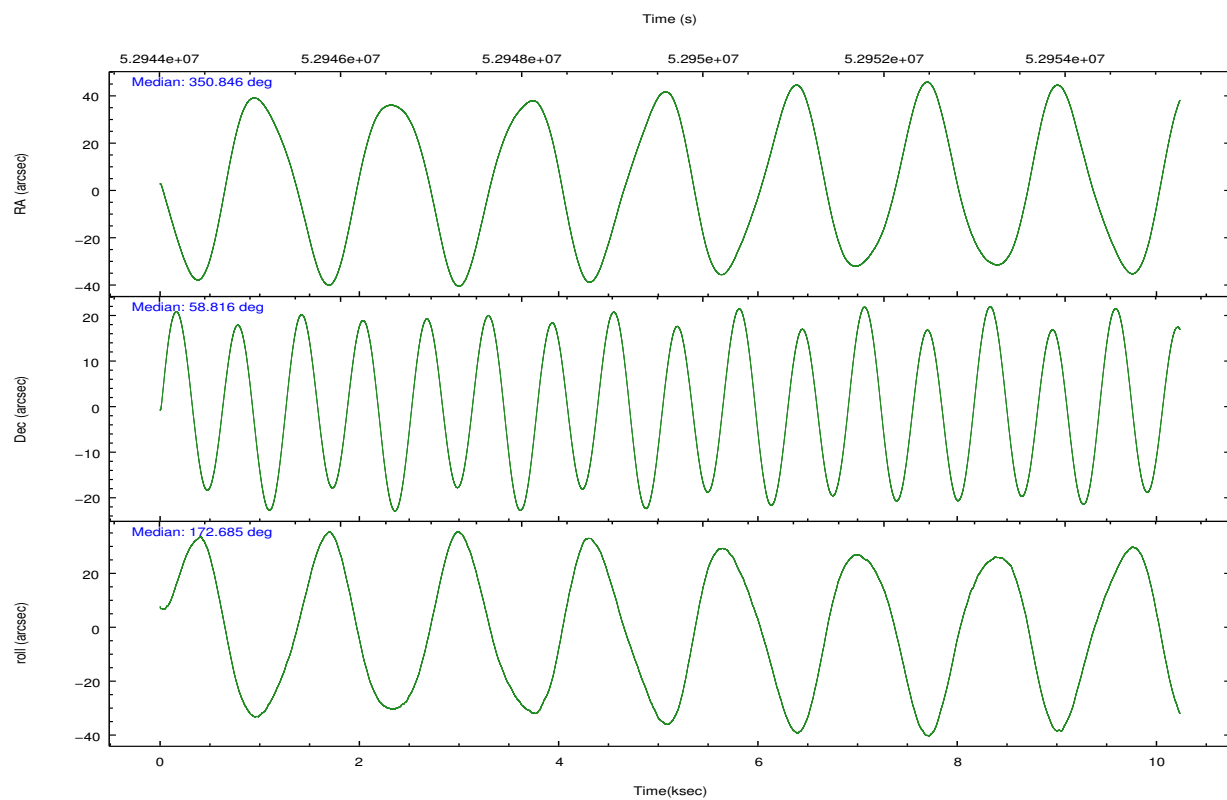
2.2 Compared Parameters

Parameter	Planned	Actual
Instrument	HRC	HRC
Detector	HRC-S	HRC-S
Grating	NONE	NONE
Data mode	OBSERVING	OBSERVING
Observation mode	POINTING	POINTING
Pointing RA	350.898433	350.8470044642721
Pointing Dec	58.827867	58.81621882312757
Pointing Roll	172.579193	172.6905284483773
SIM focus pos (mm)	-1.429586	-1.370509375638239
SIM defocus (mm)	0.1037507710433287	0.1628272637660579
SIM translation stage pos (mm)	250.455976	250.466033080201
SIM translation stage offset (mm)	0	-0.01005468664627074
Observation start time	52945000.184000	52944333.852162
Observation start date	1999-09-05T18:55:36	1999-09-05T18:45:33
Observation end time	52954756.184000	52955443.315061
Observation end date	1999-09-05T21:38:12	1999-09-05T21:50:43

Parameter	Planned	Actual
Obspar format version number	6	6
Obspar file type	PREDICTED	ACTUAL
Obspar update status	NONE	UPDATED

2.3 Aspect



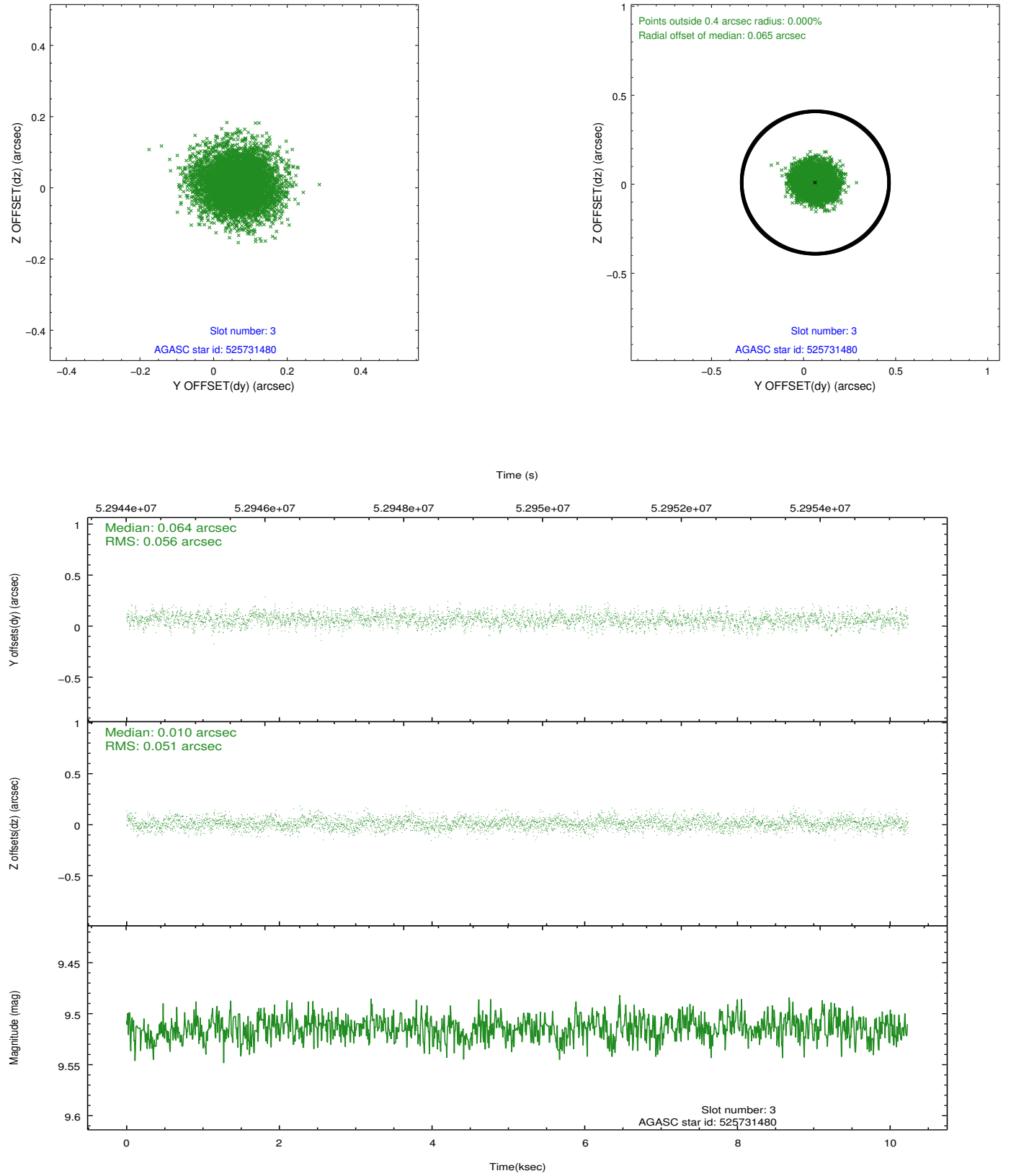


Slot Statistics

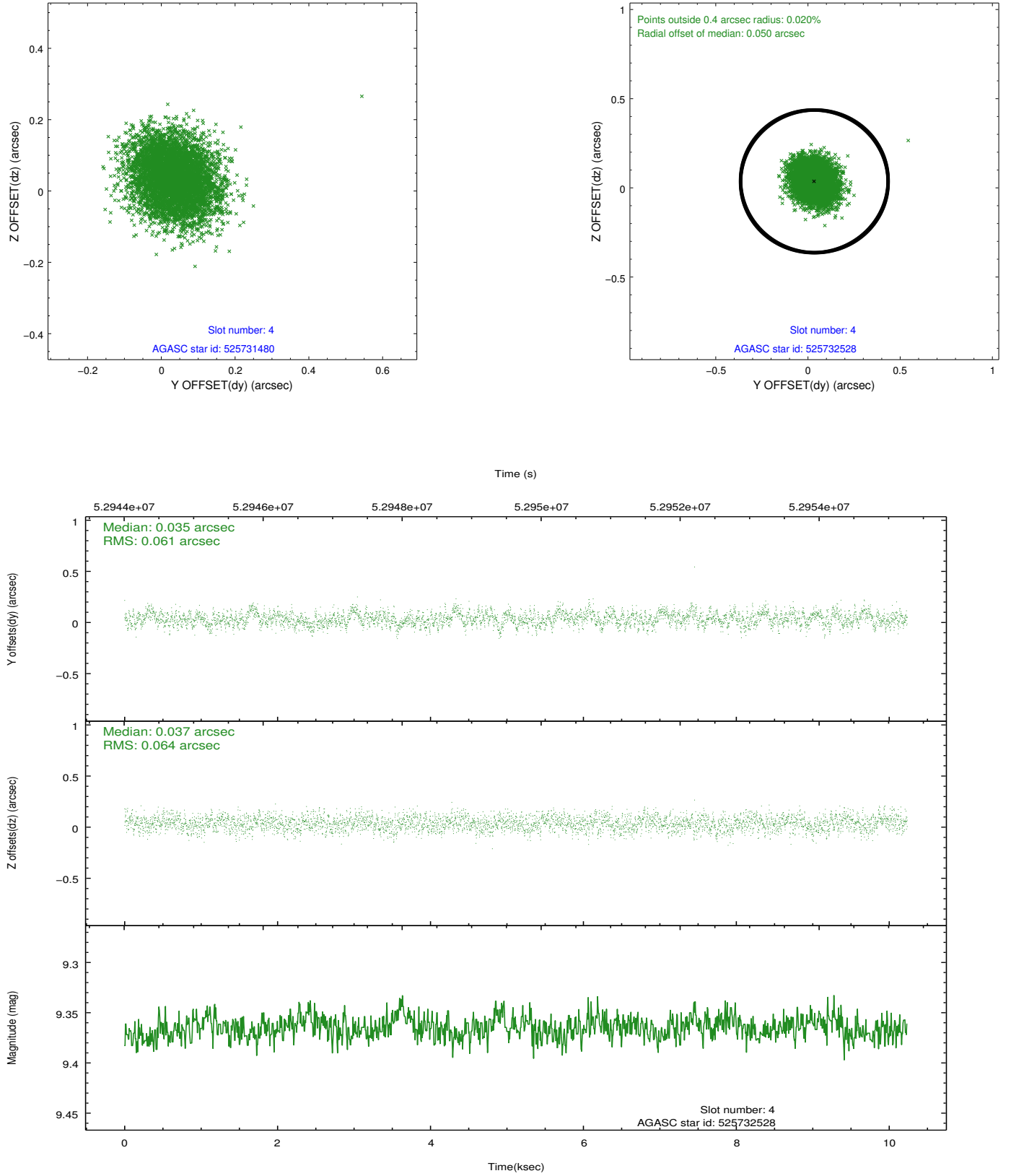
slot	status	id	mag	n_pts	med_dy	med_dz	dr1	dr2	ra	dec	mean_y	mean_z
0	FID	HRC-S-1	7.00	4994	0.150	-0.066	0.006	0.010	0.000000	0.000000	-1153.89	-447.62
1	FID	HRC-S-3	7.01	4993	0.091	-0.122	0.007	0.012	0.000000	0.000000	-1156.77	581.77
2	FID	HRC-S-4	6.99	4994	0.147	-0.109	0.005	0.009	0.000000	0.000000	1244.28	584.25
3	GUIDE	525731480	9.51	4988	0.064	0.010	0.081	0.132	351.647209	58.687294	-1454.67	313.66
4	GUIDE	525732528	9.37	4986	0.035	0.037	0.094	0.151	351.607241	59.298932	-1073.22	-1856.09
5	GUIDE	525606576	9.46	4990	-0.101	0.012	0.105	0.162	349.543555	58.678895	2446.59	834.49
6	GUIDE	525601208	9.23	4990	-0.062	0.016	0.096	0.151	349.910779	59.483724	2096.54	-2120.32
7	GUIDE	525207384	9.76	4987	0.051	-0.072	0.143	0.234	351.880308	58.083642	-2198.43	2401.91

2.4 Star Slots

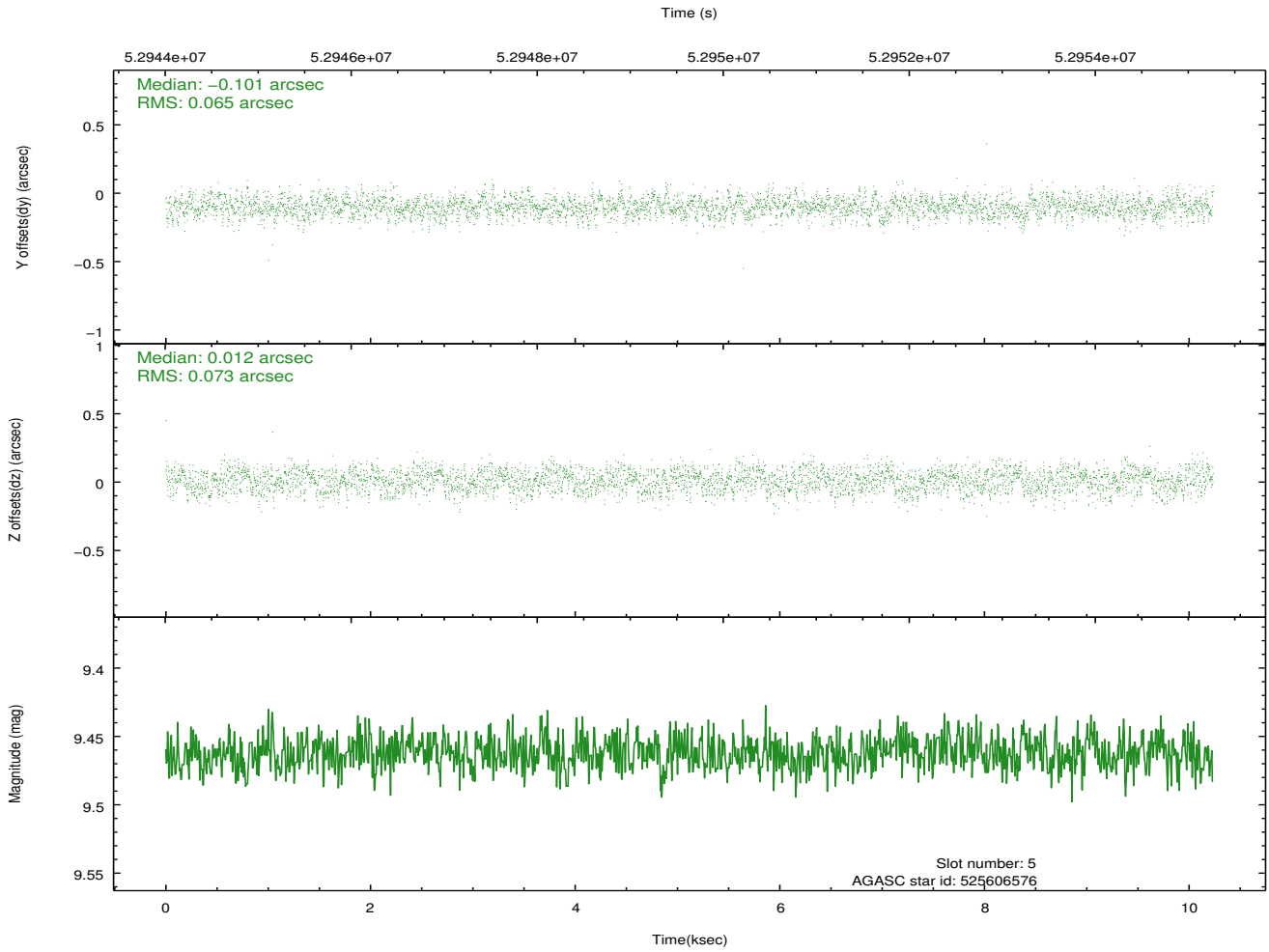
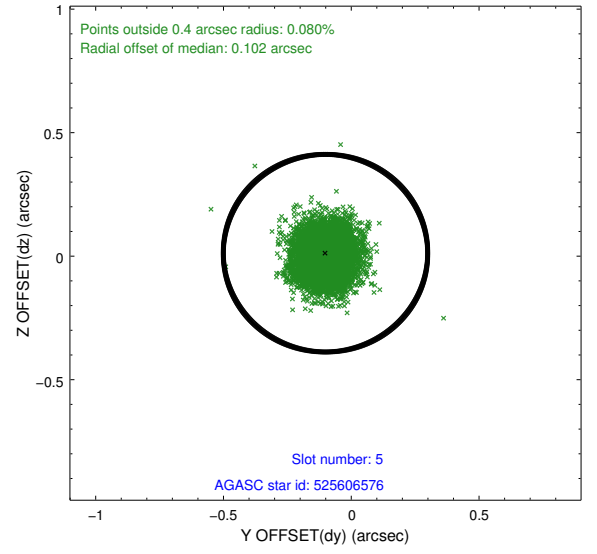
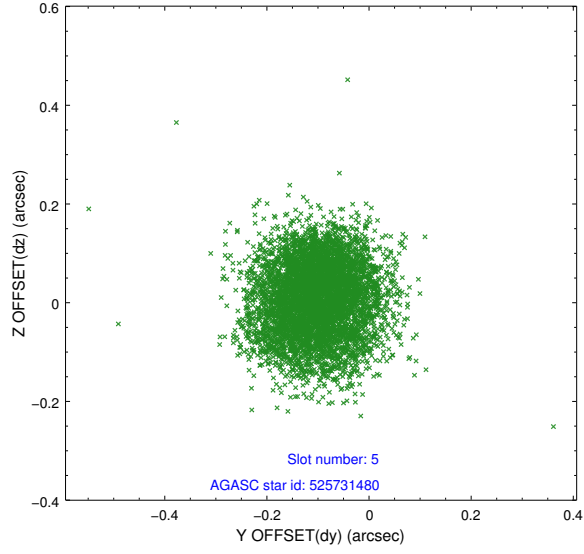
2.4.1 Slot 3



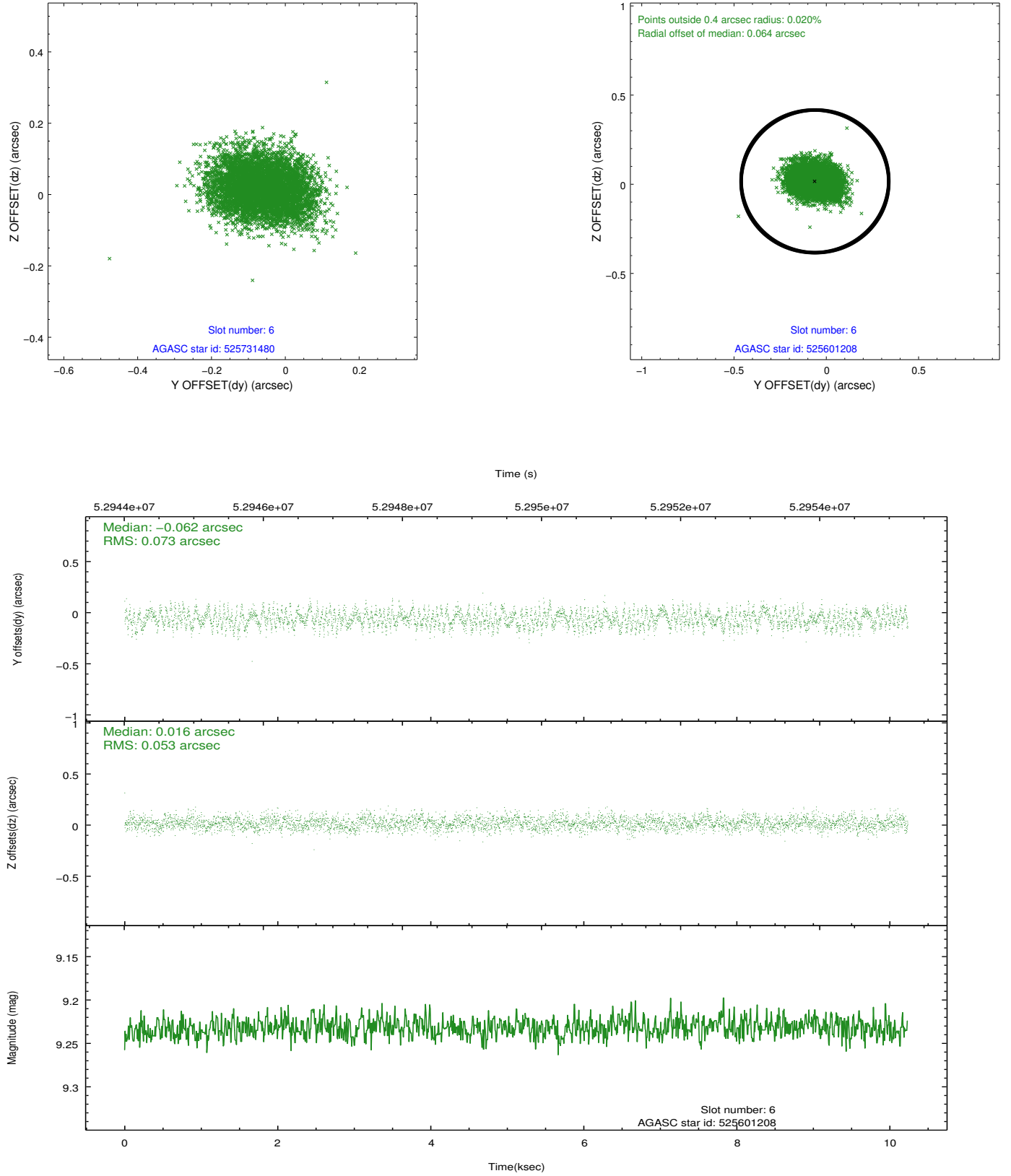
2.4.2 Slot 4



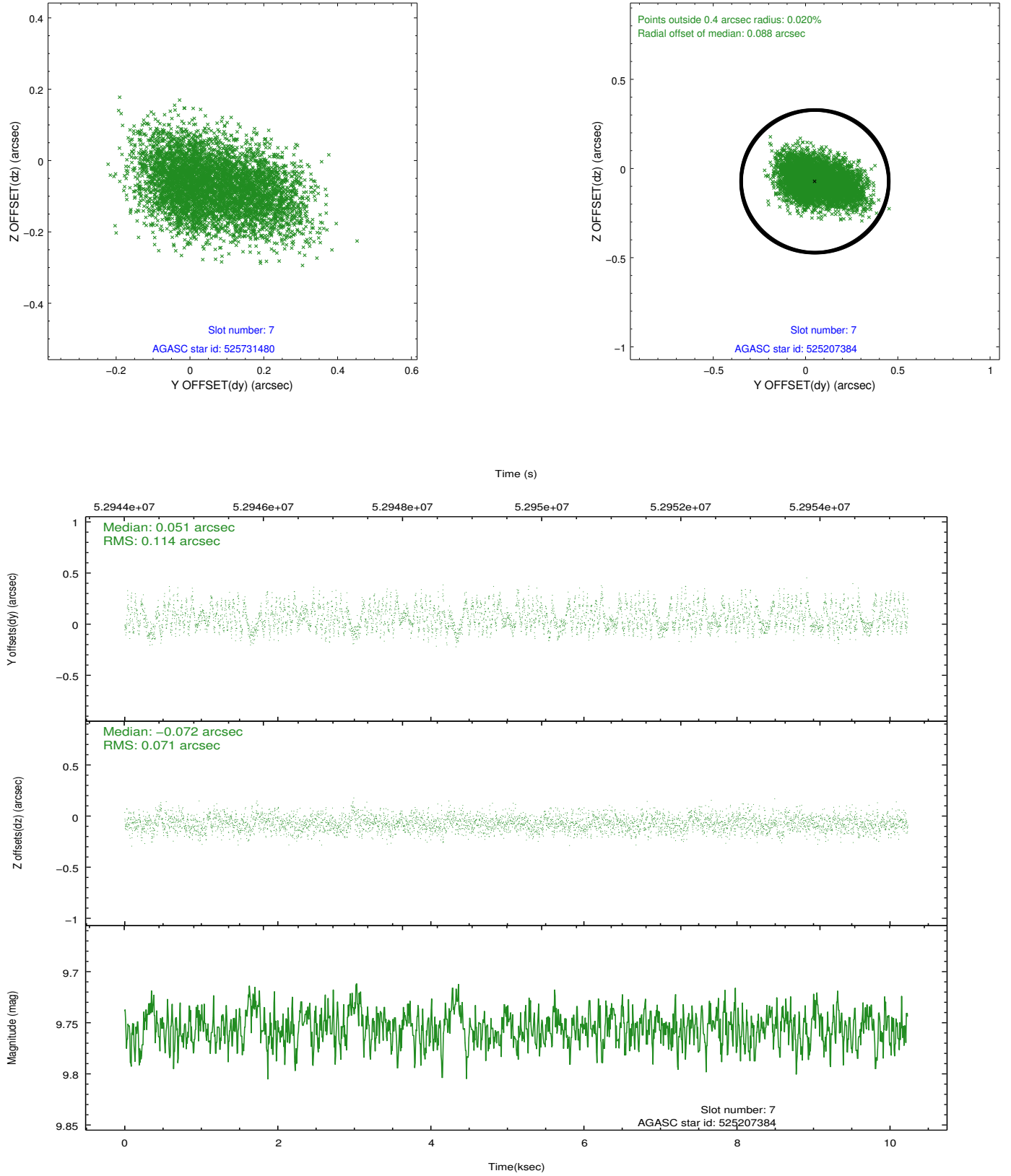
2.4.3 Slot 5



2.4.4 Slot 6

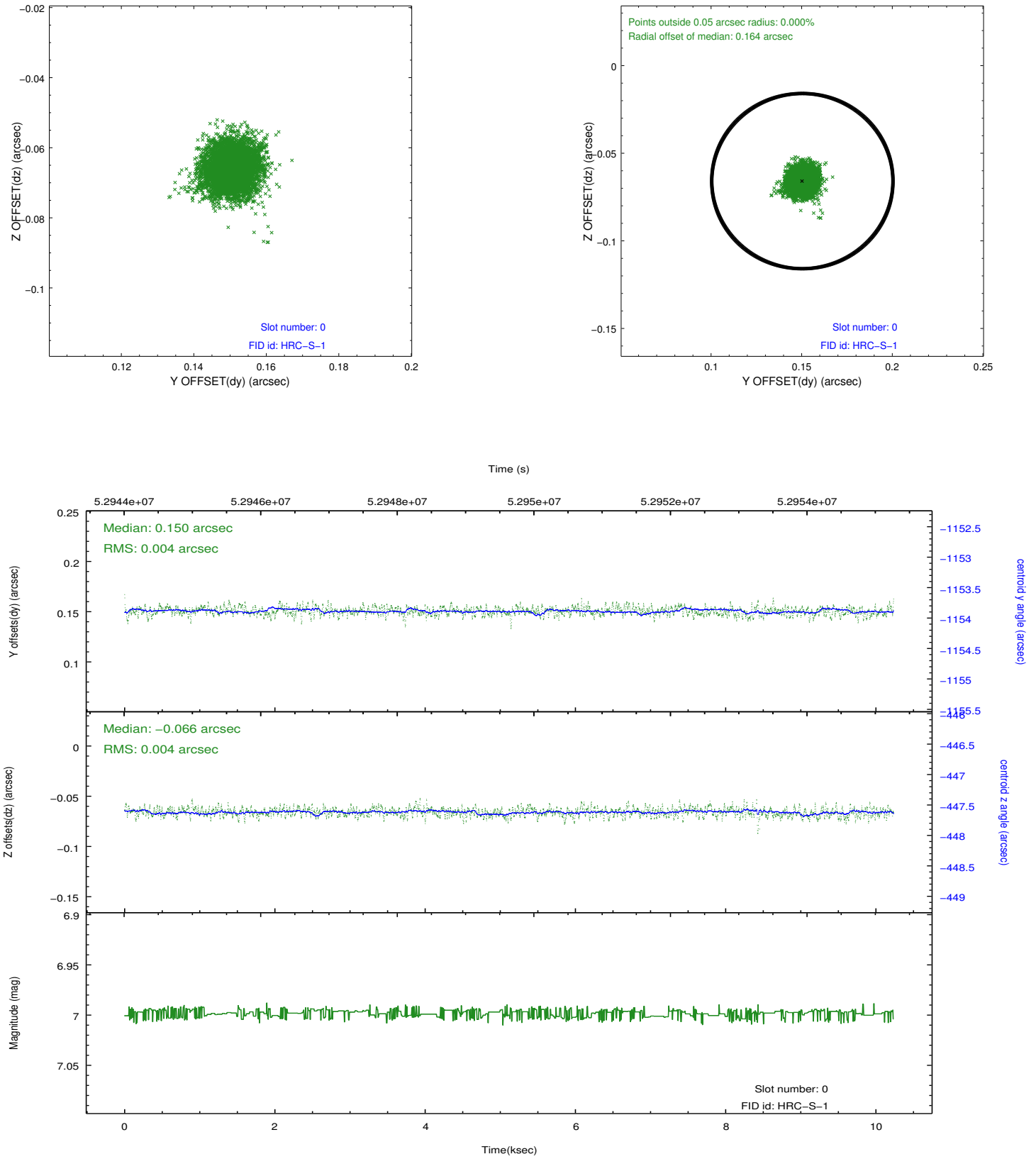


2.4.5 Slot 7

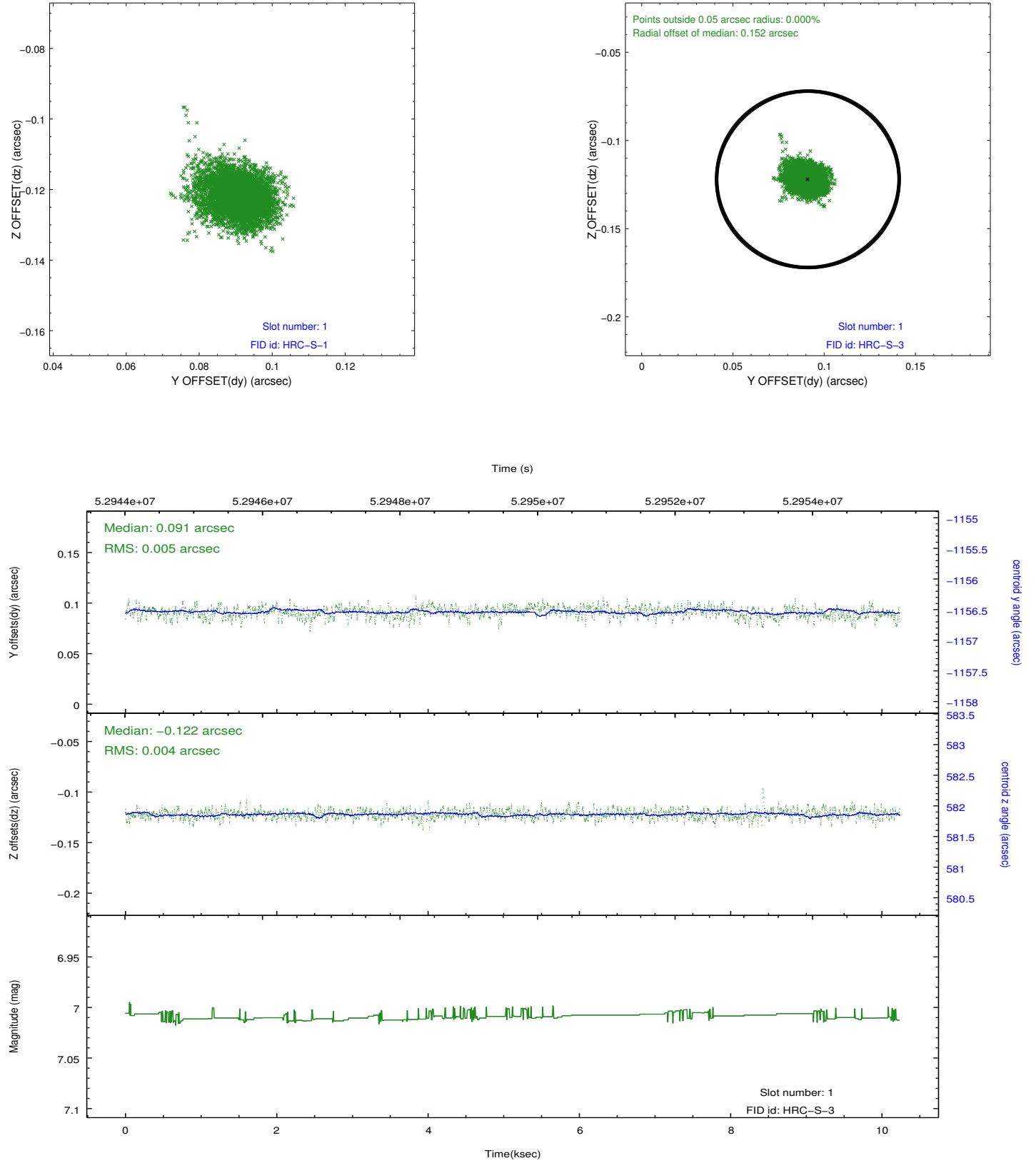


2.5 FID Slots

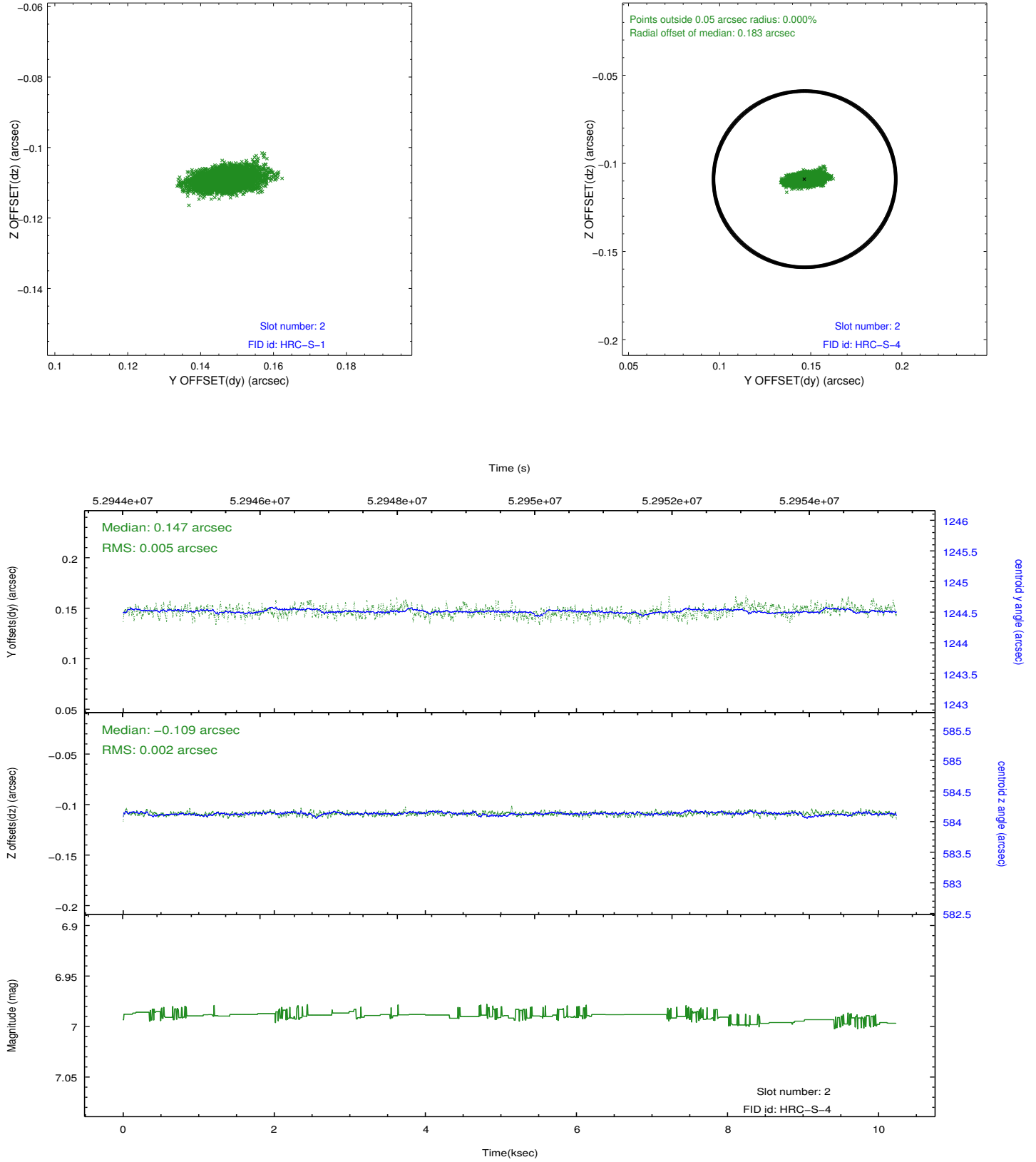
2.5.1 Slot 0



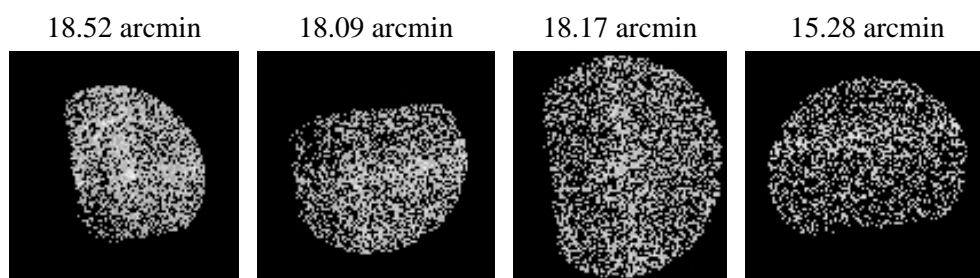
2.5.2 Slot 1



2.5.3 Slot 2



3 Point Sources



A Summary

A.1 Status

V&V Scientist	Beth Sundheim
V&V Date (YYYY-MM-DD)	2010.02.01
V&V Edition	1
V&V Disposition and Status	OK
V&V Charge Time	9.477

A.2 Comments