

V&V Reference Report

L2 ASCDS Version : 8.4.5

Observation 1622 - L2 Version 3
Chandra X-Ray Center

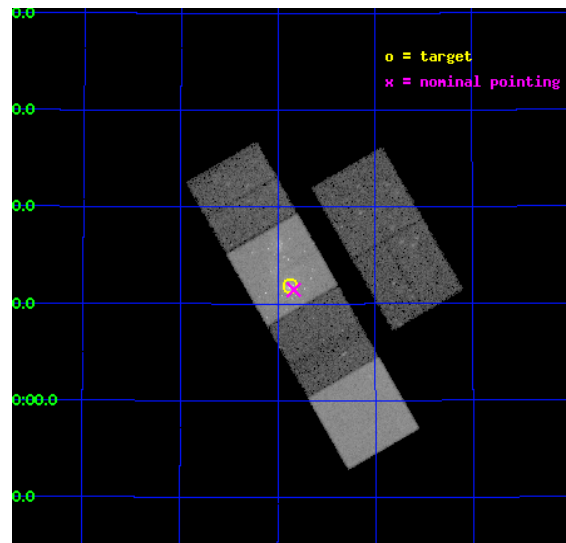
L2 Processing Date : Sep 20 2012

Contents

1	Front	2
2	OBI	3
2.1	OBI	3
2.1.1	Images	3
2.1.2	Bias	3
2.1.3	Parameters	4
2.1.4	Events	4
2.2	Compared Parameters	5
2.3	Aspect	6
2.4	Star Slots	9
2.4.1	Slot 3	9
2.4.2	Slot 4	10
2.4.3	Slot 5	11
2.4.4	Slot 6	12
2.4.5	Slot 7	13
2.5	FID Slots	14
2.5.1	Slot 0	14
2.5.2	Slot 1	15
2.5.3	Slot 2	16
A	Summary	17
A.1	Status	17
A.2	Comments	17

1 Front

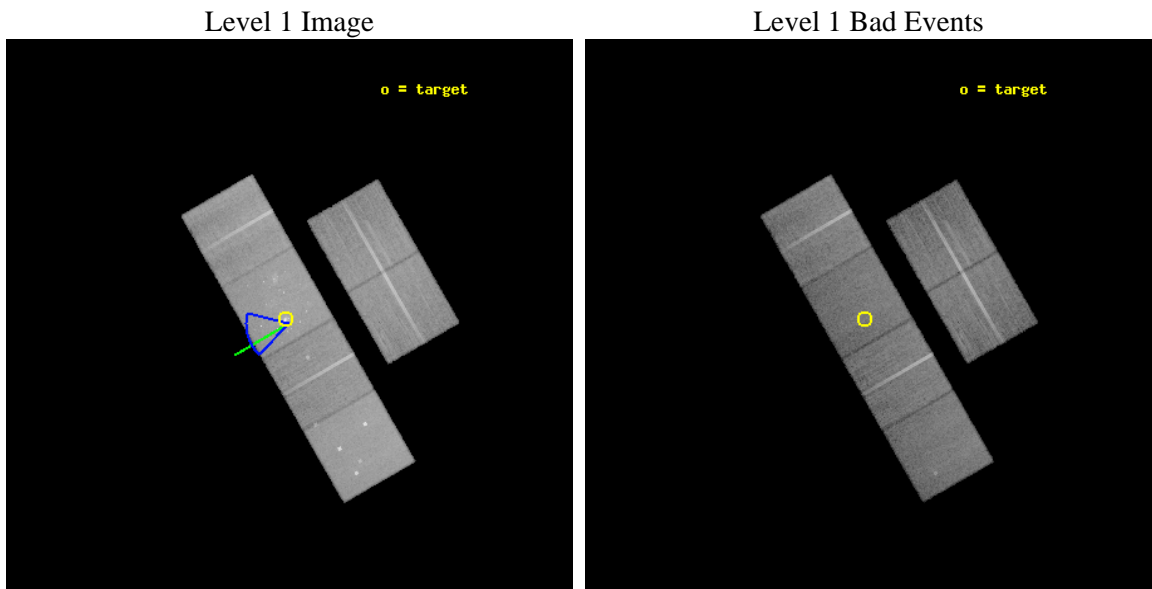
seq_num	700238	Sequence number
obs_id	1622	Observation id
title	STUDIES OF RADIO JETS AND THE NARROW LINE REGIONS OF ACTIVE GALAXIES	
observer	Professor Andrew Wilson	Principal investigator
object	M51	Source name
dtcycle	0	
cycle	P	events from which exps? Prim/Second/Both
ra_targ	202.467917	Observer's specified target RA [deg]
dec_targ	47.198278	Observer's specified target Dec [deg]
ra_nom	202.45864881421	Nominal RA [deg]
dec_nom	47.190796118799	Nominal Dec [deg]
roll_nom	240.09376547726	Nominal Roll [deg]
revision	3	Processing version of data
ontime	27151.95906502	Sum of GTIs [s]
livetime	26808.144610392	Livetime [s]
ontime2	27148.71810478	Sum of GTIs [s]
ontime3	27155.200025275	Sum of GTIs [s]
ontime5	27155.200025275	Sum of GTIs [s]
ontime6	27155.200025275	Sum of GTIs [s]
ontime7	27151.95906502	Sum of GTIs [s]
ontime8	27151.95906502	Sum of GTIs [s]
l2events	296131	Number of level 2 events



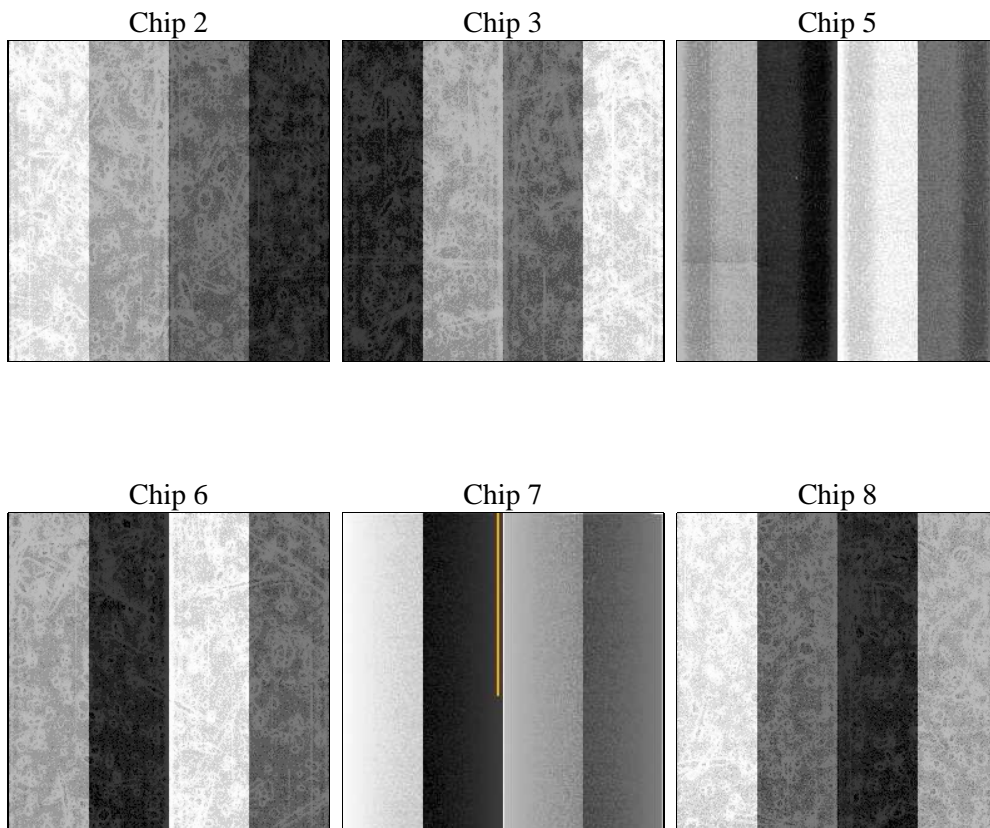
2 OBI

2.1 OBI

2.1.1 Images



2.1.2 Bias



2.1.3 Parameters

obi_num	0	Obi number	sched_exp_time	27000.000000	[s] Scheduled observation exposure time
ascdsver	8.4.5	Processing system revision	ontime	27151.95906502	Sum of GTIs [s]
caldsver	4.5.1.1	 	ontime2	27148.71810478	Sum of GTIs [s]
date	2012-09-20T05:47:01	Date and time of file creation	ontime3	27155.200025275	Sum of GTIs [s]
revision	3	Processing version of data	ontime5	27155.200025275	Sum of GTIs [s]
			ontime6	27155.200025275	Sum of GTIs [s]
			ontime7	27151.95906502	Sum of GTIs [s]
			ontime8	27151.95906502	Sum of GTIs [s]
			l1events	1281593	Number of level 1 events

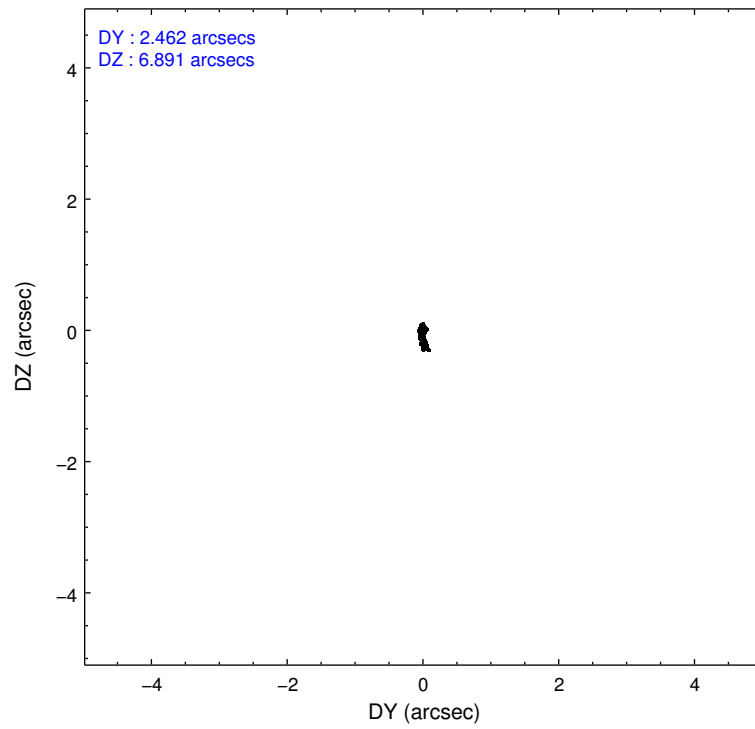
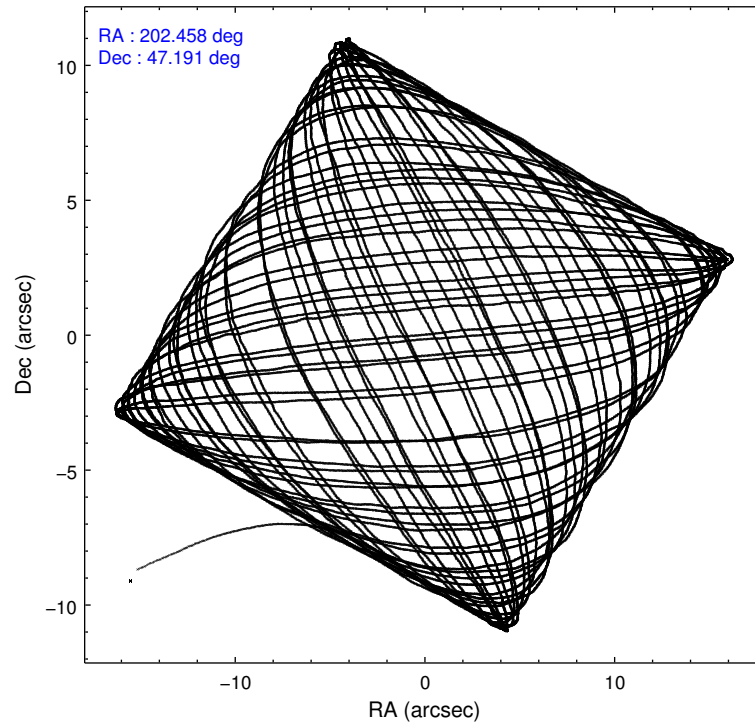
2.1.4 Events

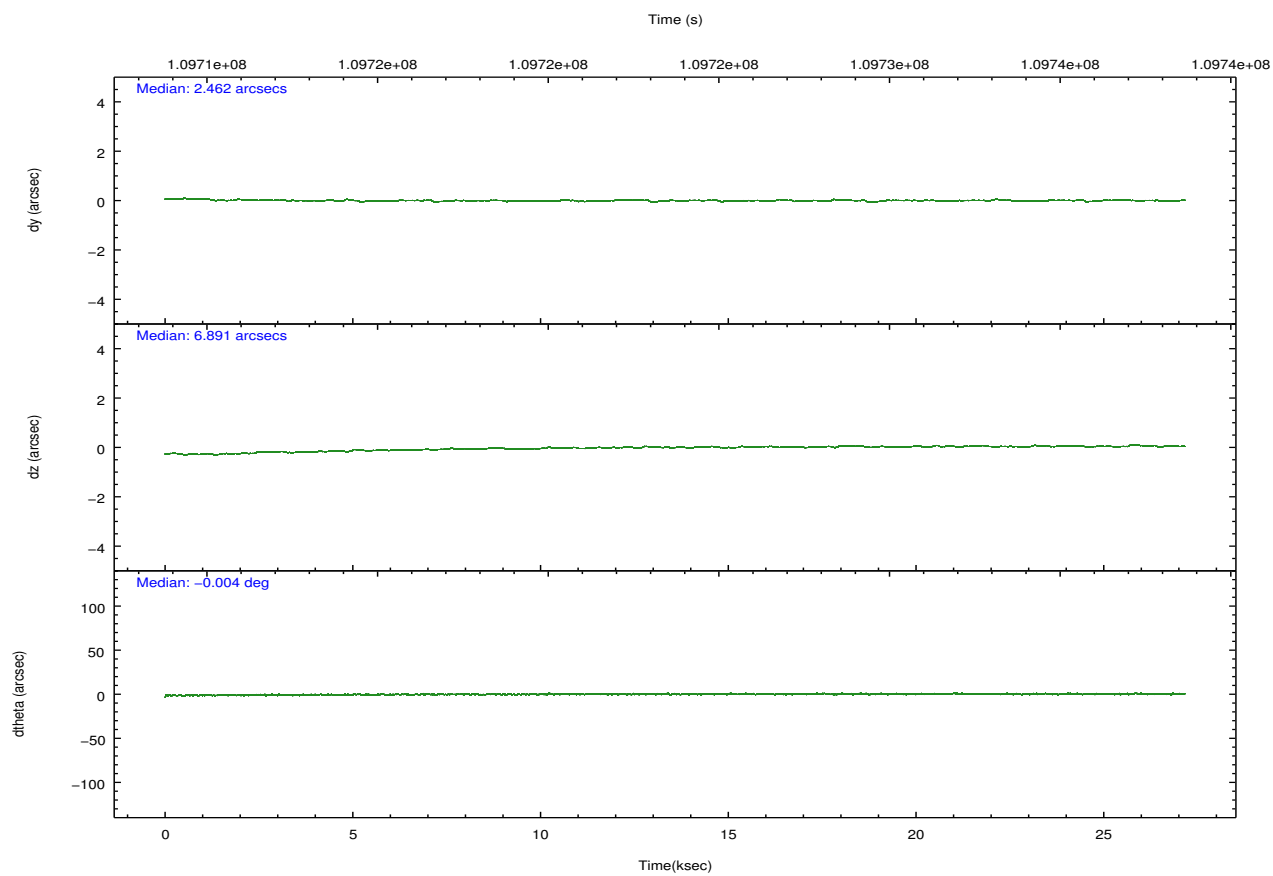
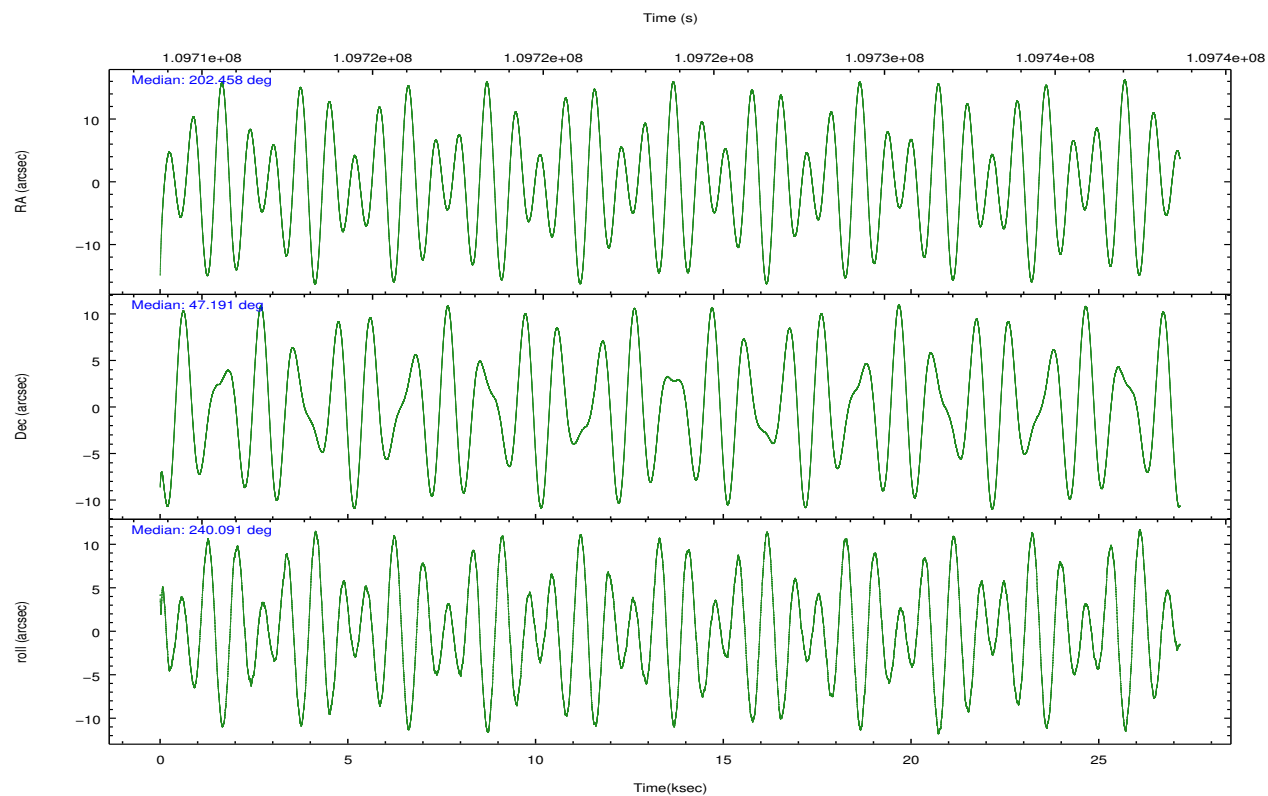
	ccd 2	ccd 3	ccd 5	ccd 6	ccd 7	ccd 8		ccd 2	ccd 3	ccd 5	ccd 6	ccd 7	ccd 8
level 1 events	186955	177054	257115	182082	252329	226058	grade 0 events	8875	8658	17022	8991	17869	14048
rejected events	166539	157151	137053	161006	133516	181161		4%	4%	6%	4%	7%	6%
rejected %	89%	88%	53%	88%	52%	80%	grade 1 events	83	94	336	88	213	144
								0%	0%	0%	0%	0%	0%
							grade 2 events	4199	3813	33817	4115	24659	9706
								2%	2%	13%	2%	9%	4%
							grade 3 events	1909	1971	4985	1992	11465	4826
								1%	1%	1%	1%	4%	2%
							grade 4 events	1922	1972	4691	1990	11183	4419
								1%	1%	1%	1%	4%	1%
							grade 5 events	6317	6908	18820	7587	22088	9360
								3%	3%	7%	4%	8%	4%
							grade 6 events	3514	3495	59583	3996	53674	11901
								1%	1%	23%	2%	21%	5%
							grade 7 events	160136	150143	117861	153323	111178	171654
								85%	84%	45%	84%	44%	75%

2.2 Compared Parameters

Parameter	Planned	Actual	Parameter	Planned	Actual
Instrument	ACIS	ACIS	Obspar format version number	7	7
Detector	ACIS-235678	ACIS-235678	Obspar file type	PREDICTED	ACTUAL
Grating	NONE	NONE	Obspar update status	NONE	UPDATED
Data mode	VFAINT	VFAINT	Number of optional ACIS chips dropped	0	0
Observation mode	POINTING	POINTING	On-chip summing requested	N	N
[deg] Pointing RA	202.458157	202.4586488142089	Subarray requested	NONE	NONE
[deg] Pointing Dec	47.218095	47.19079611879879	Alternating exposures requested	N	N
[deg] Pointing Roll	239.937504	240.0937654772598	[s] Primary exposure time	0.000000	3.2
[deg] Roll angle	253.000000	253.000000			
[deg] Roll tolerance	30.000000	30.000000			
Roll constraint allows 180D rotation	N	N			
[mm] SIM focus pos	-0.684267	-0.6828225247311905			
[mm] SIM defocus	0	0.001444936568705701			
[mm] SIM translation stage pos	-190.132523	-190.1400660498719			
[mm] SIM translation stage offset	0	0.00754346686406393			
[s] Observation start time (MET)	109710298.184000	109709233.73233			
Observation start date	2001-06-23T19:03:54	2001-06-23T18:47:13			
[s] Observation end time (MET)	109737298.184000	109738039.82095			
Observation end date	2001-06-24T02:33:54	2001-06-24T02:47:19			
Read mode	TIMED	TIMED			

2.3 Aspect



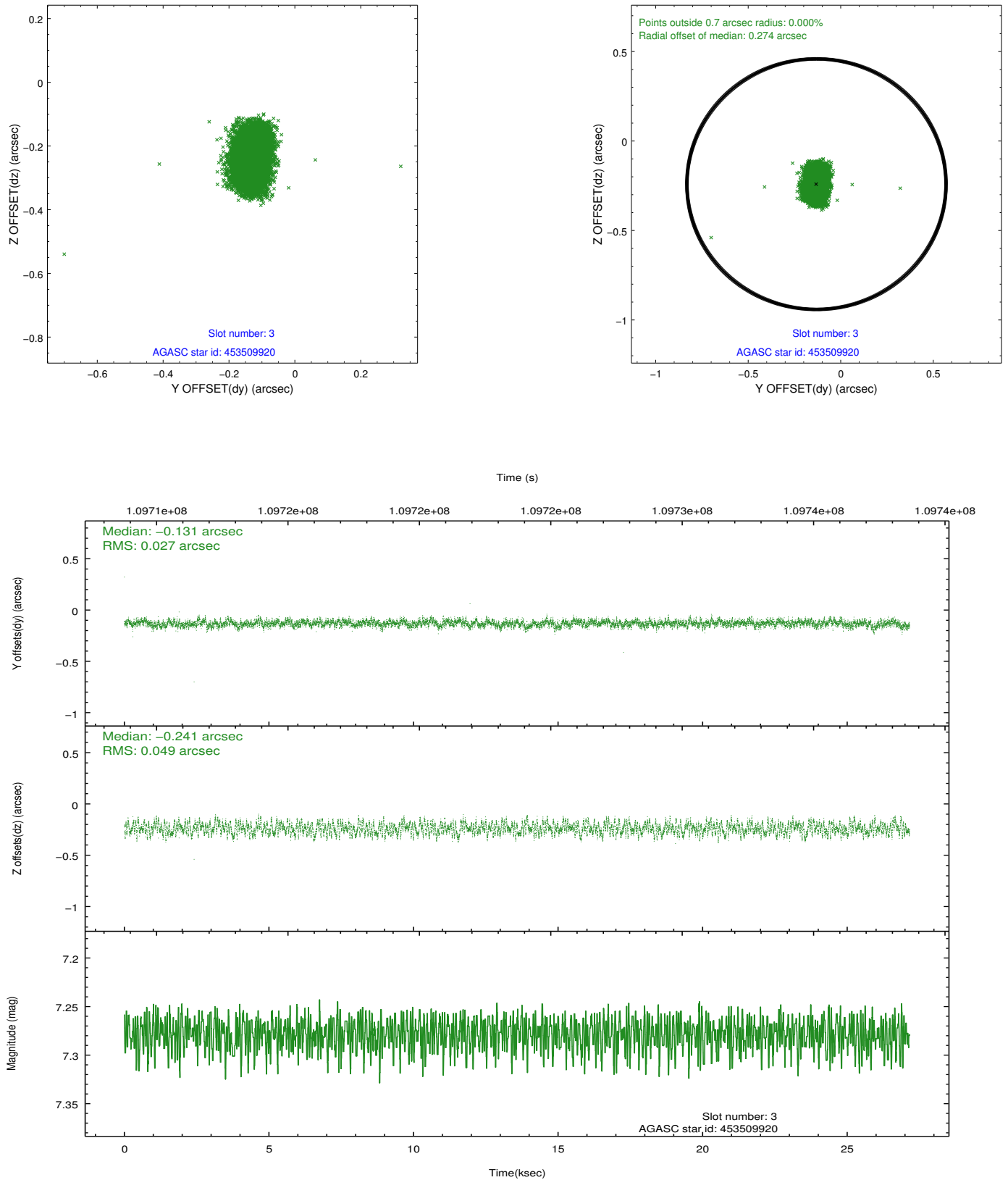


Slot Statistics

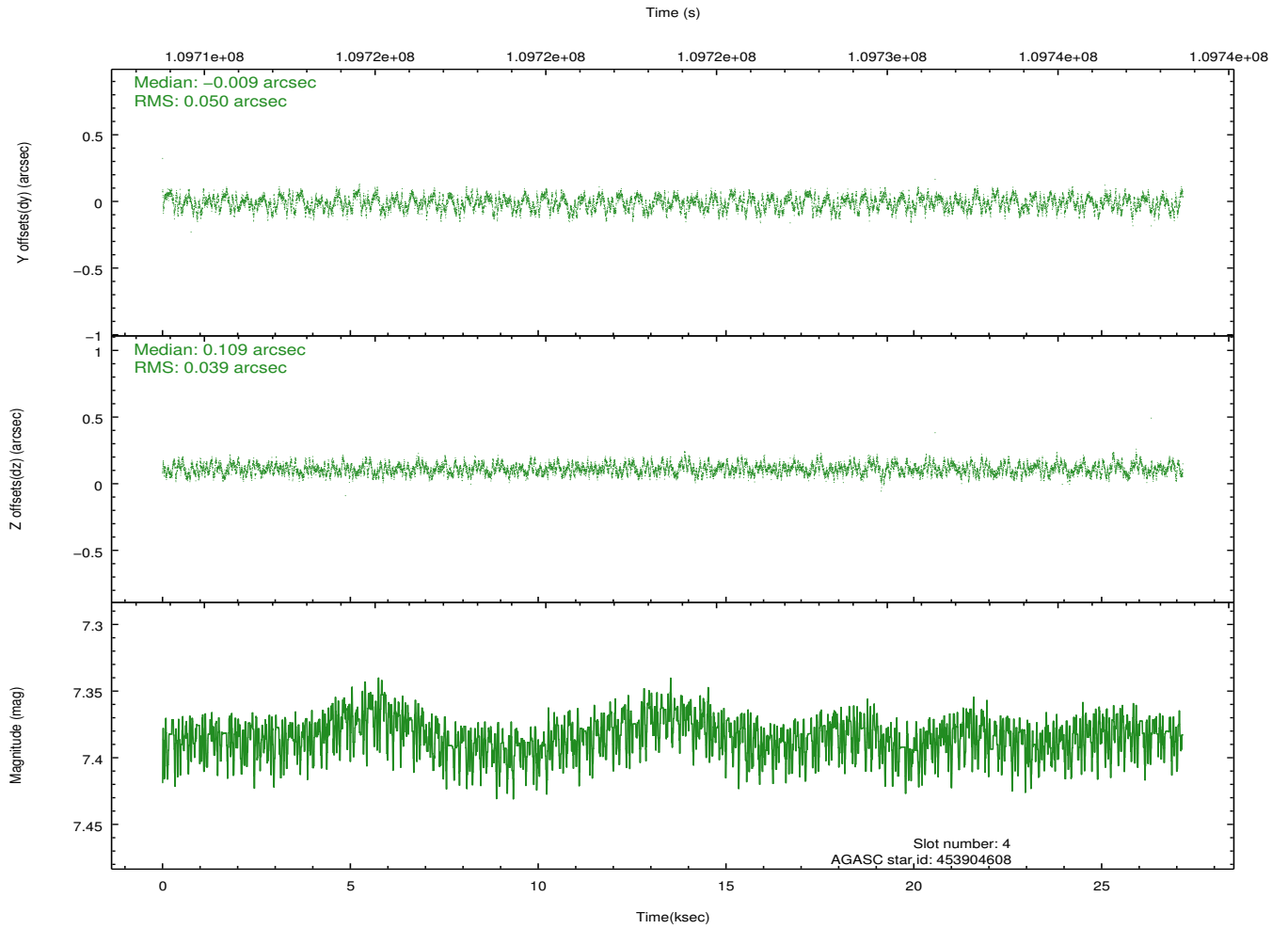
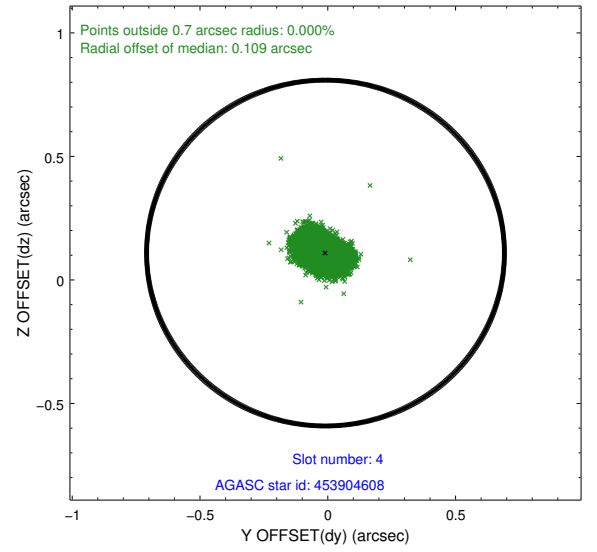
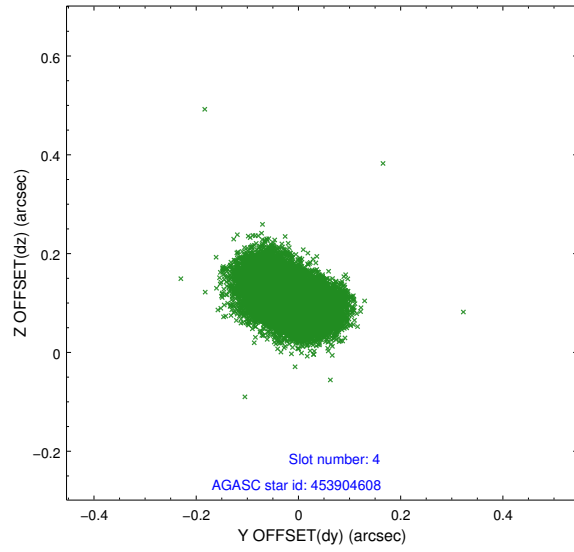
slot	status	id	mag	n_pts	med_dy	med_dz	dr1	dr2	ra	dec	mean_y	mean_z
0	FID	ACIS-S-2	7.11	6624	-0.018	0.000	0.007	0.012	0.000000	0.000000	-755.09	-1728.02
1	FID	ACIS-S-4	7.19	6623	-0.042	0.008	0.006	0.011	0.000000	0.000000	2158.10	180.39
2	FID	ACIS-S-5	7.24	6623	0.029	-0.000	0.007	0.011	0.000000	0.000000	-1807.78	174.14
3	GUIDE	453509920	7.28	13247	-0.131	-0.241	0.059	0.097	202.256826	47.847140	-1717.35	-1555.05
4	GUIDE	453904608	7.38	13249	-0.009	0.109	0.069	0.106	202.983748	47.234418	-698.85	1081.32
5	GUIDE	453511800	9.19	13242	0.223	0.017	0.086	0.139	201.825327	46.820165	2015.08	-633.66
6	GUIDE	453511320	9.73	13244	-0.026	-0.018	0.109	0.176	201.652270	47.423457	334.47	-2073.19
7	GUIDE	454303504	9.72	13123	-0.054	0.133	0.090	0.149	202.757470	47.708424	-1892.59	-256.56

2.4 Star Slots

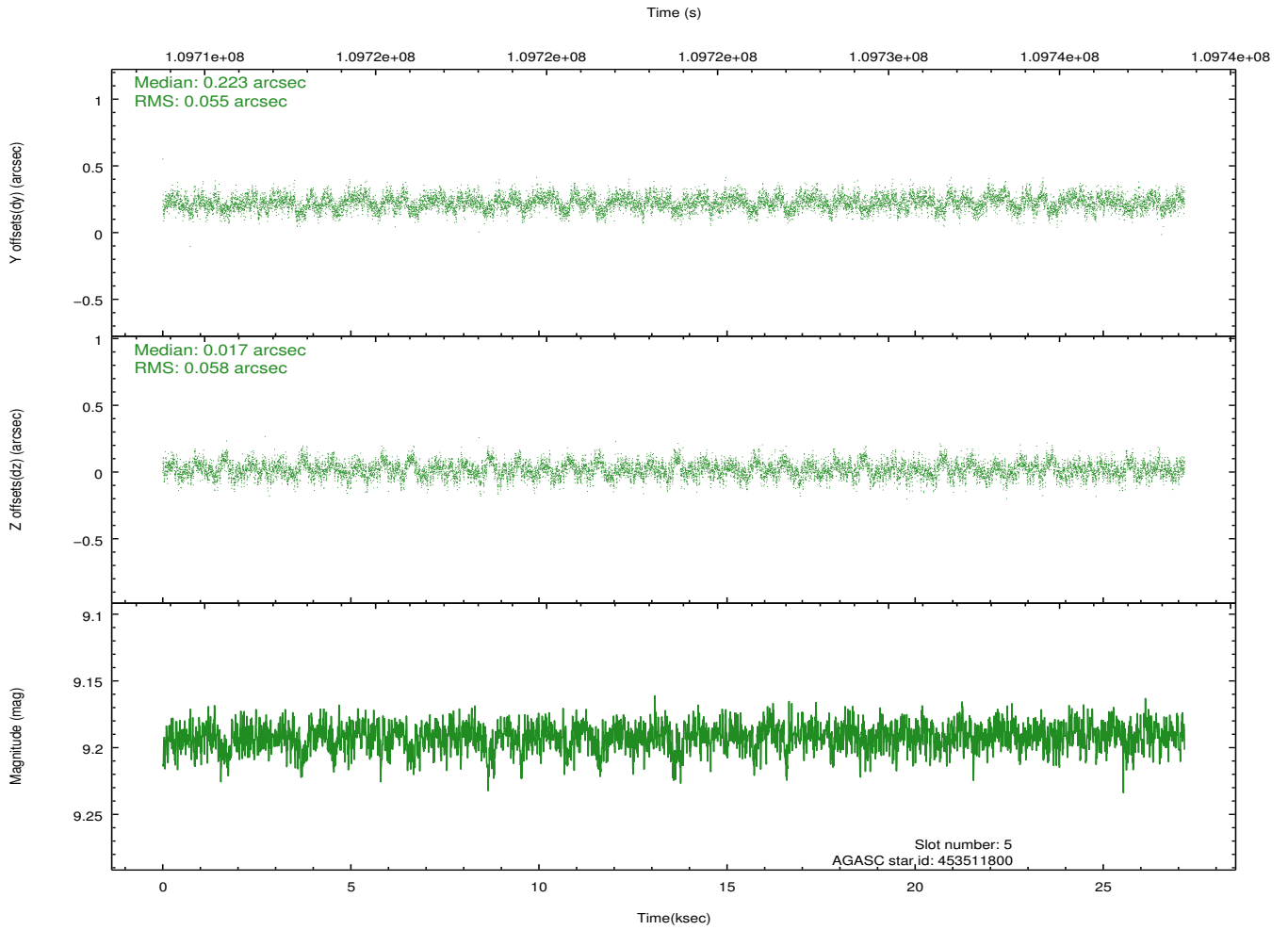
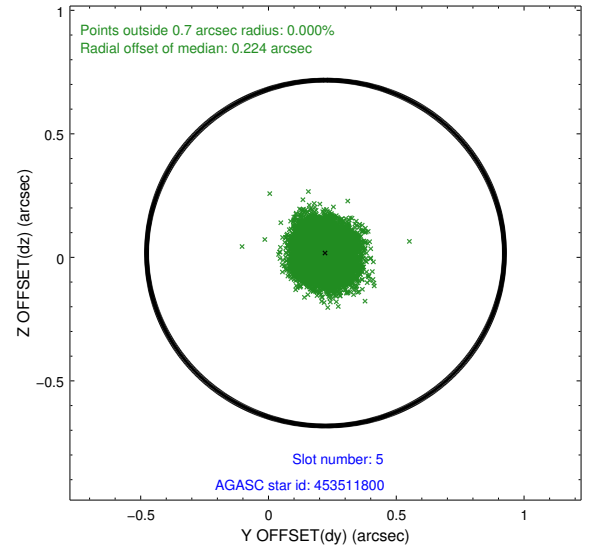
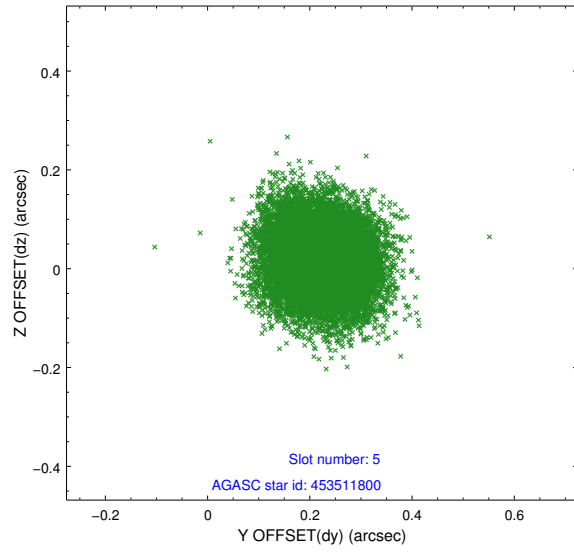
2.4.1 Slot 3



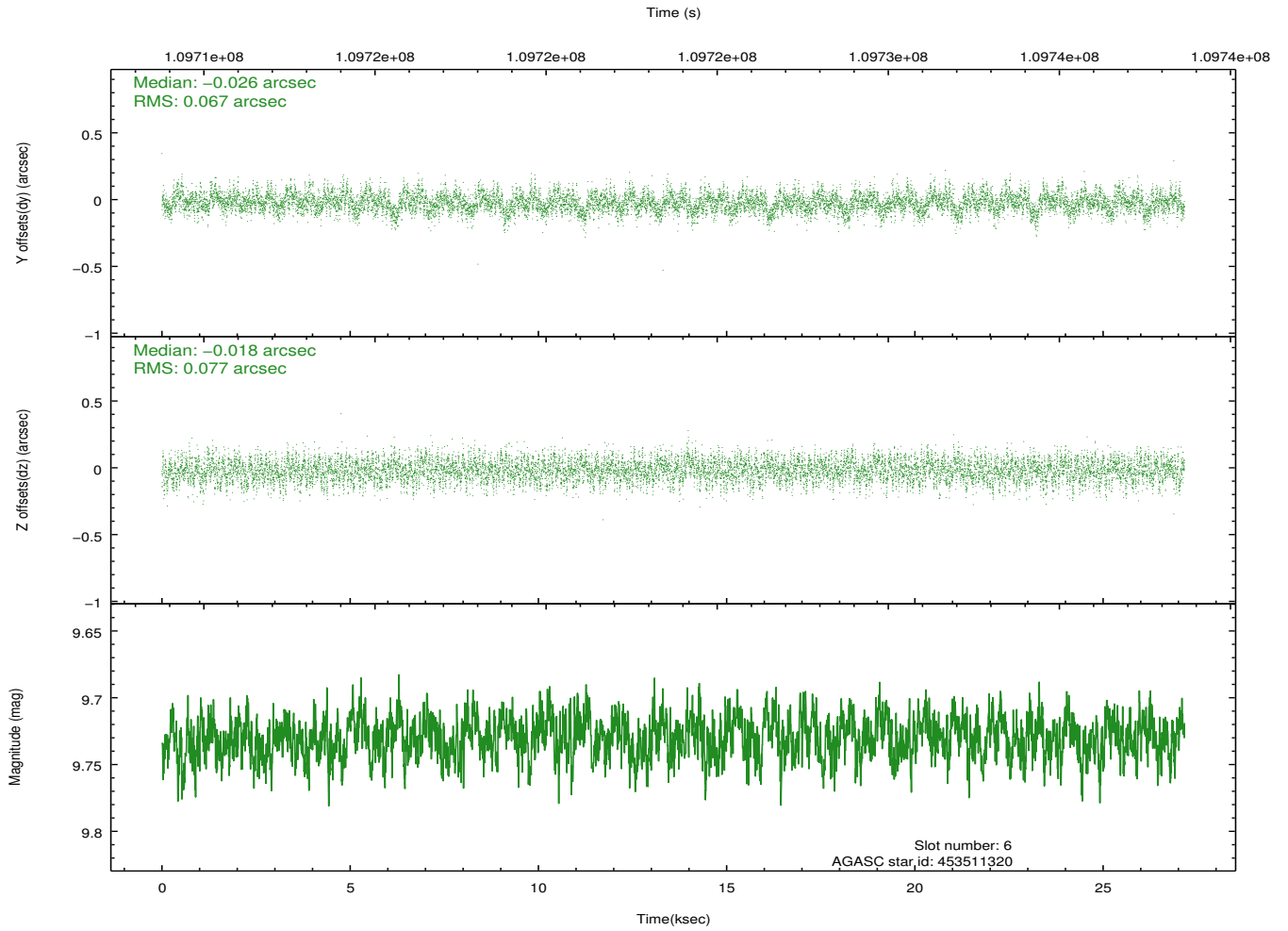
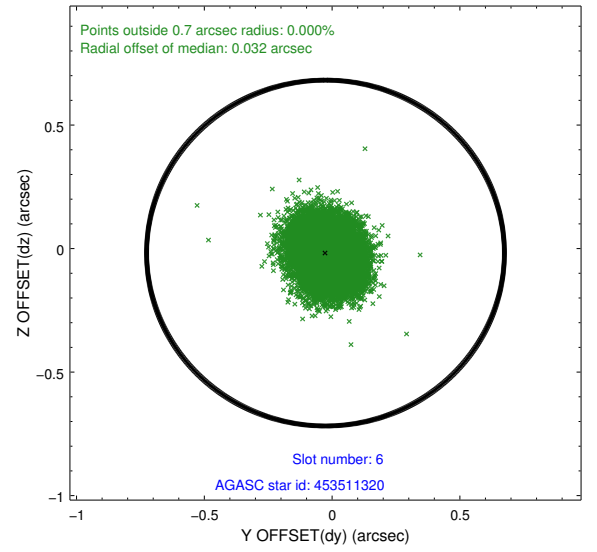
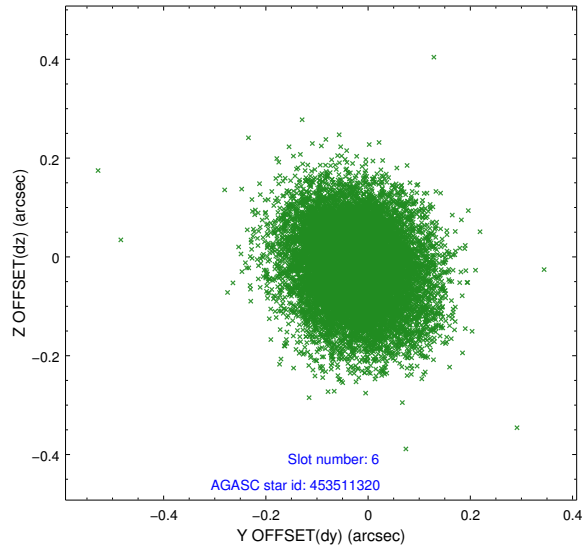
2.4.2 Slot 4



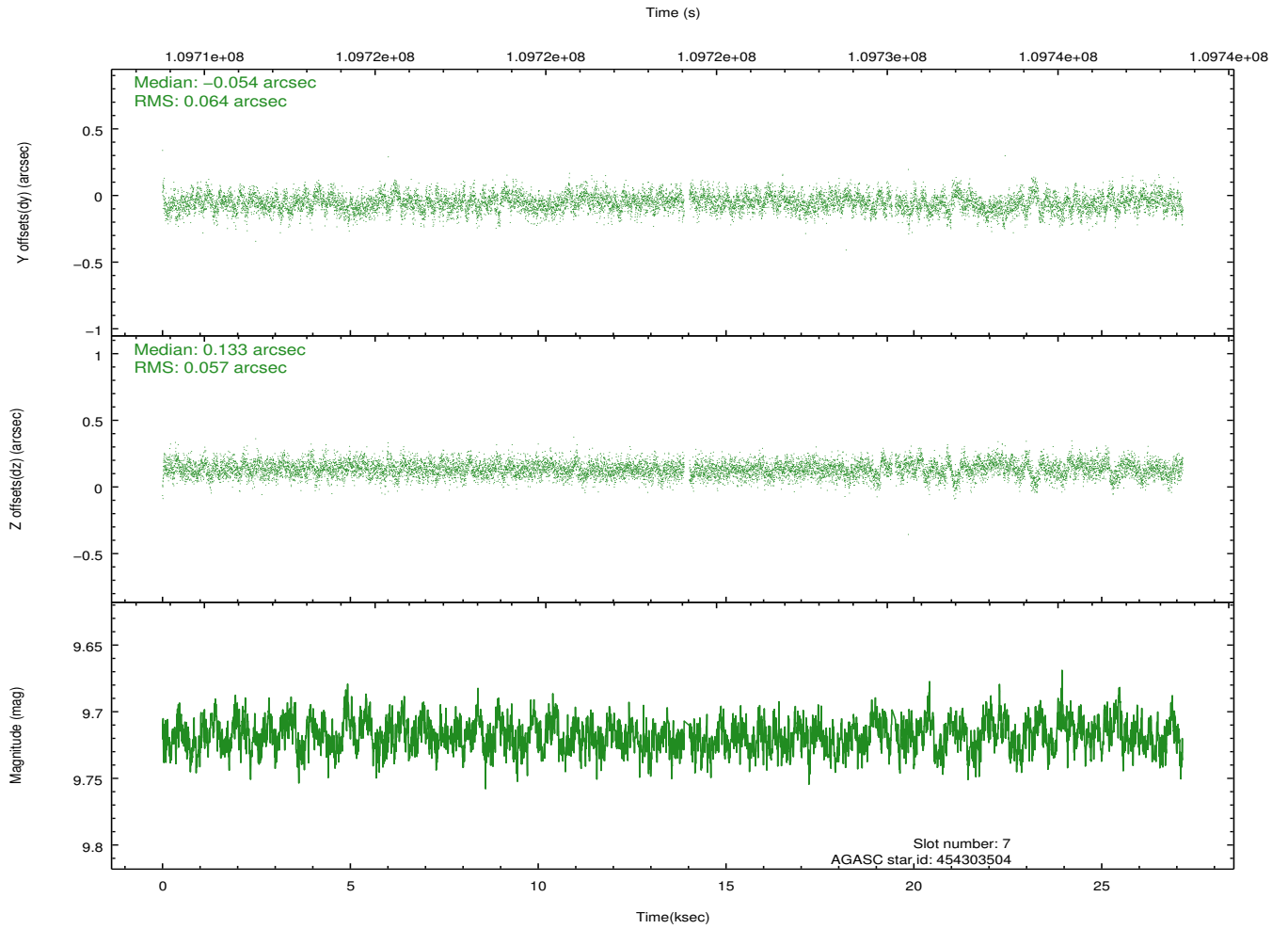
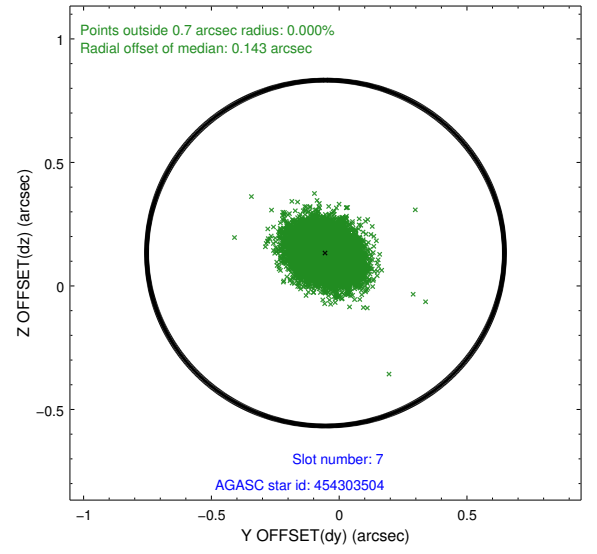
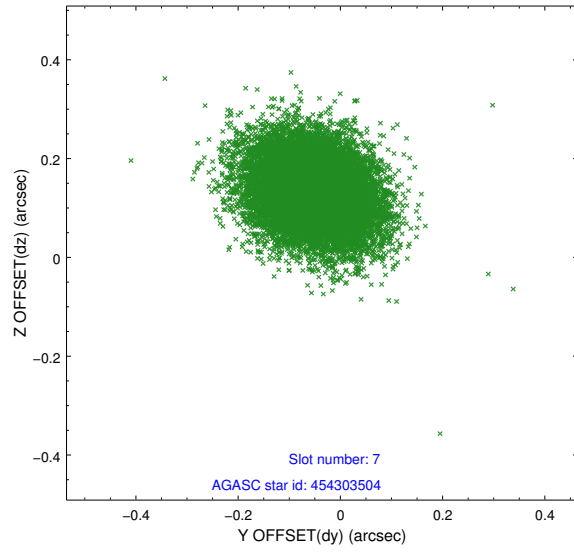
2.4.3 Slot 5



2.4.4 Slot 6

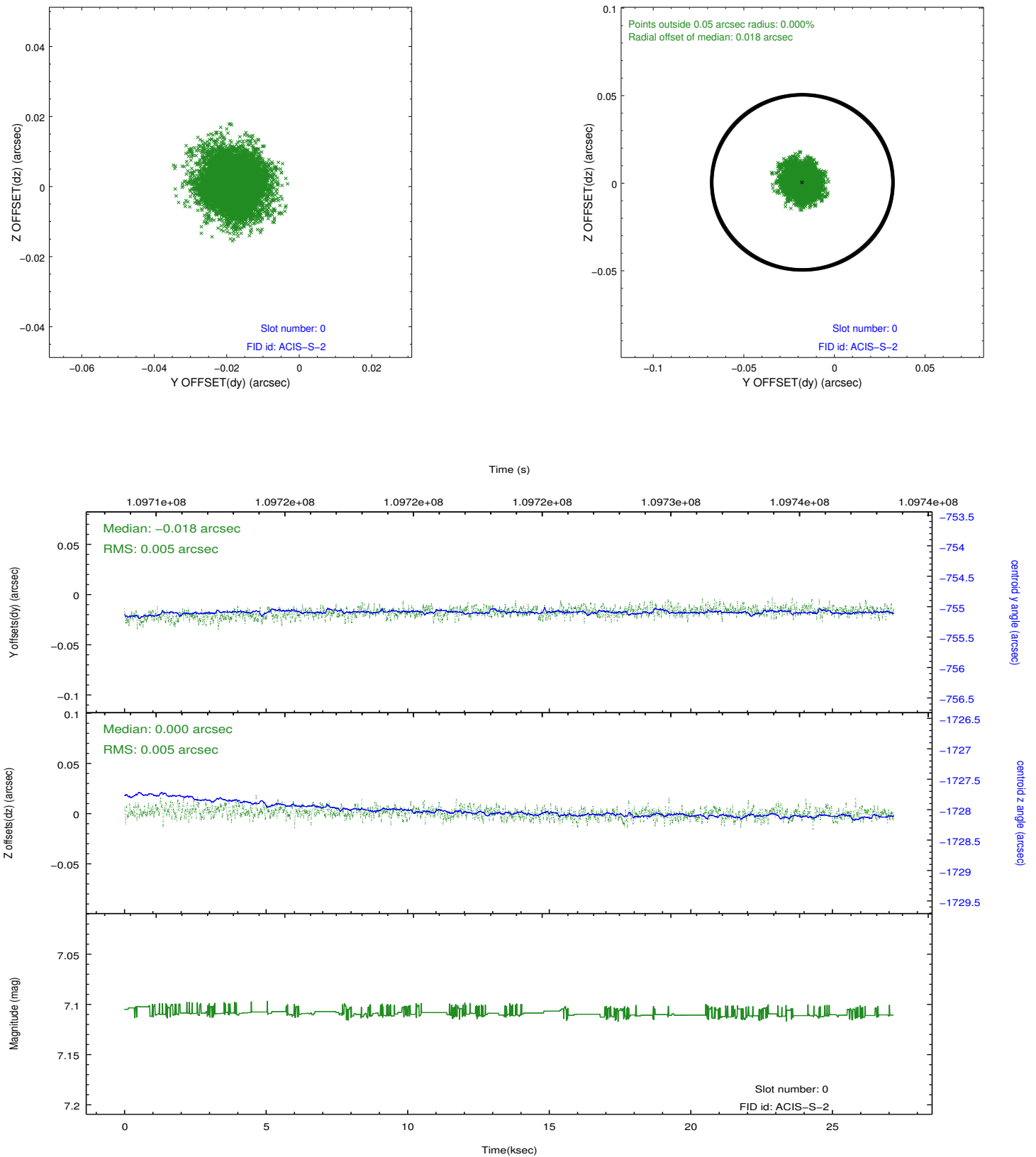


2.4.5 Slot 7

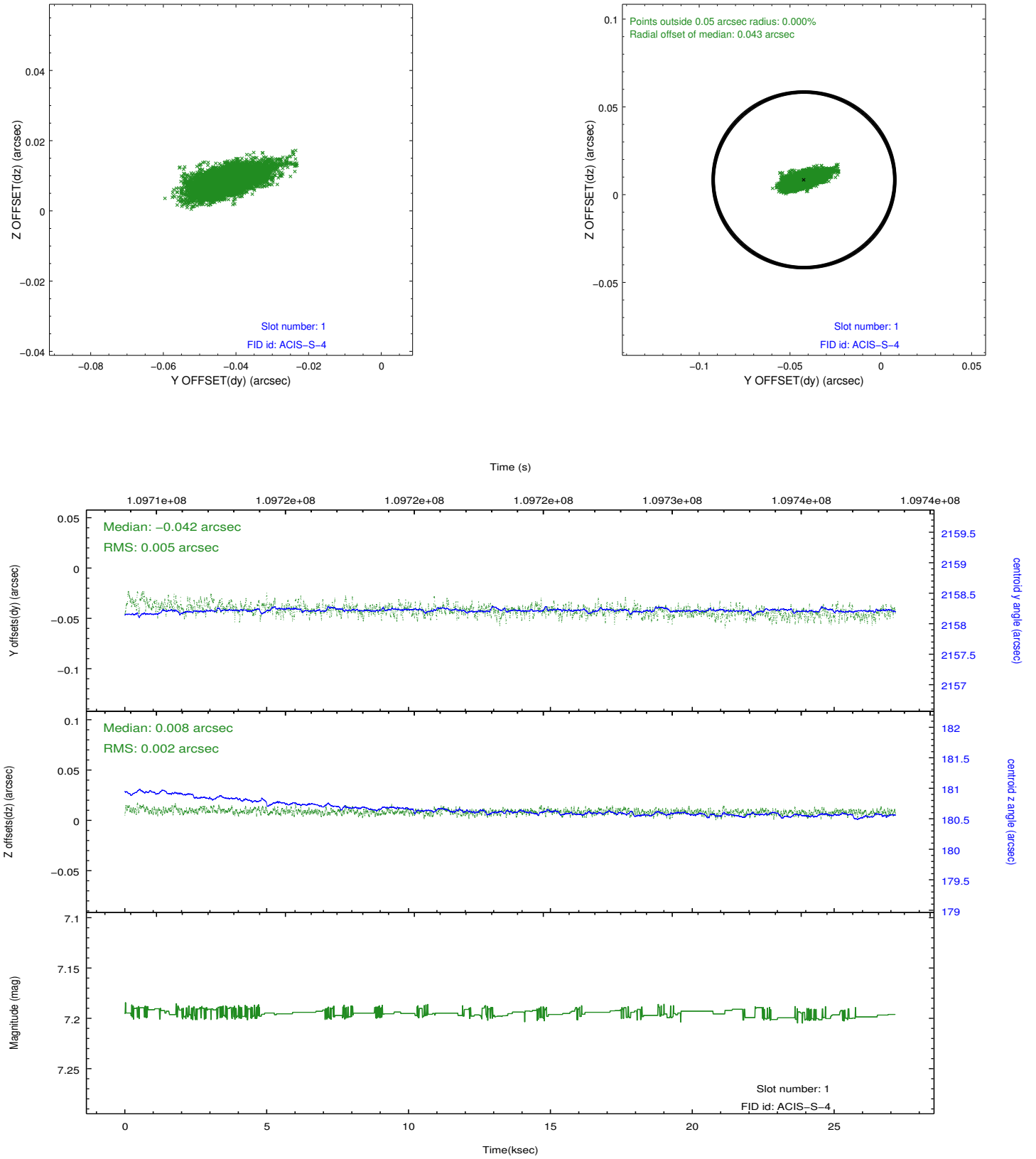


2.5 FID Slots

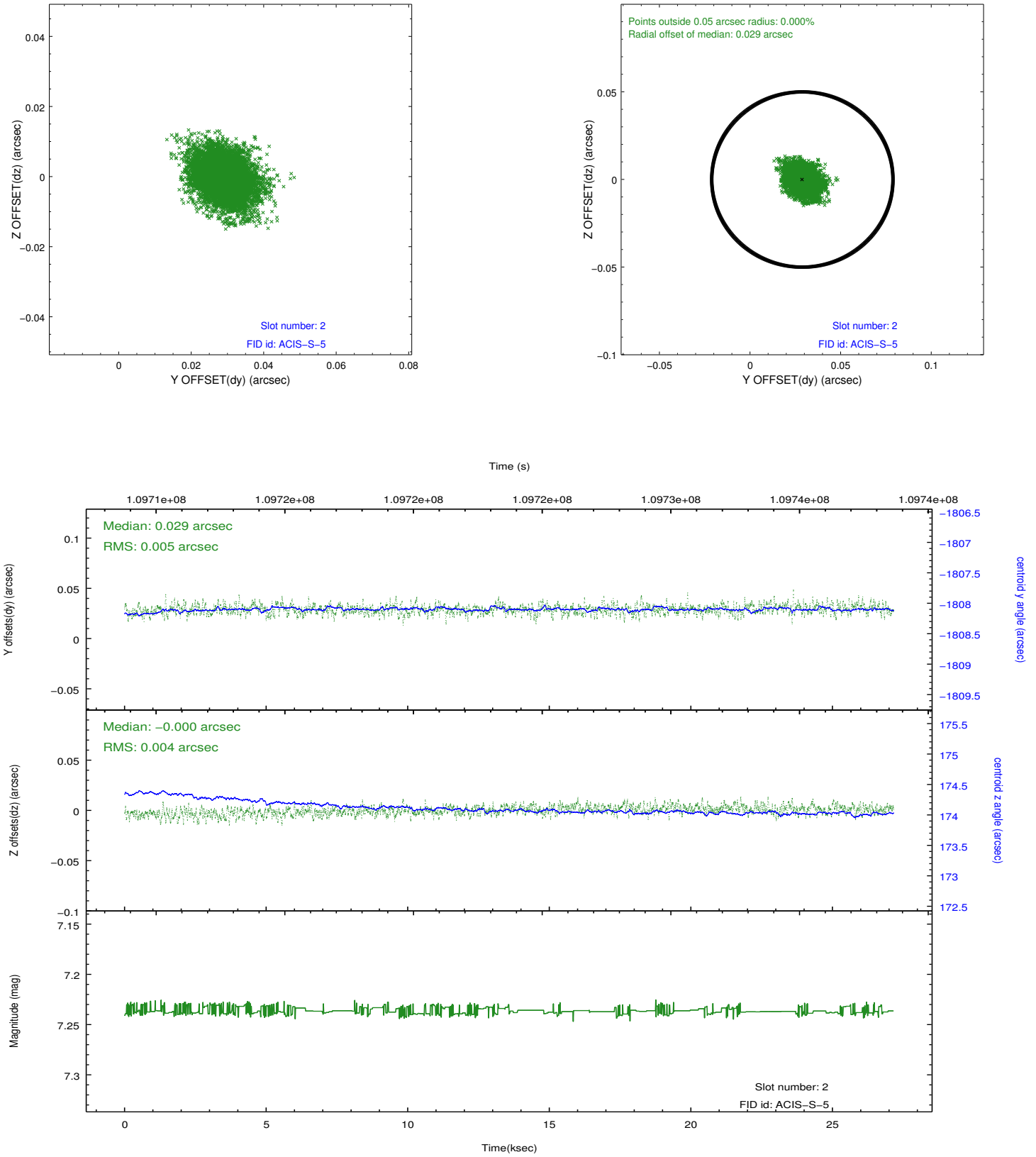
2.5.1 Slot 0



2.5.2 Slot 1



2.5.3 Slot 2



A Summary

A.1 Status

V&V Scientist	Jen Lauer
V&V Date (YYYY-MM-DD)	2012.09.21
V&V Edition	1
V&V Disposition and Status	OK
V&V Charge Time	27.152

A.2 Comments

Roll constraint OK.