

V&V Reference Report

L2 ASCDS Version : 7.6.9

Observation 1582 - L2 Version 001
Chandra X-Ray Center

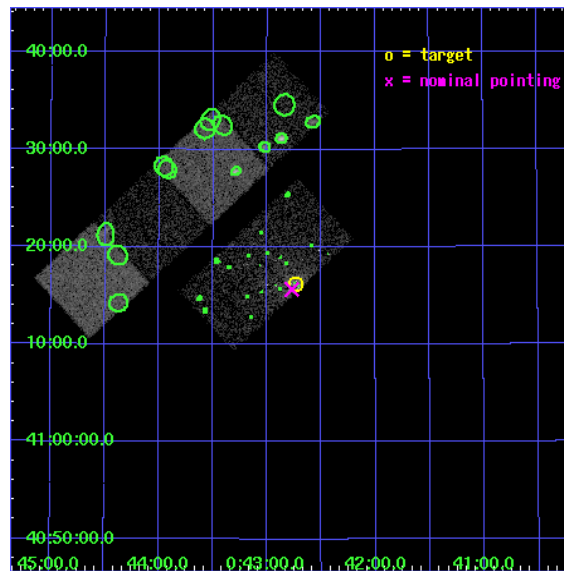
L2 Processing Date : Nov 8 2006

Contents

1	Front	2
2	OBI	3
2.1	OBI	3
2.1.1	Images	3
2.1.2	Bias	3
2.1.3	Parameters	4
2.1.4	Events	4
2.2	Compared Parameters	5
2.3	Aspect	6
2.4	Star Slots	9
2.4.1	Slot 3	9
2.4.2	Slot 4	10
2.4.3	Slot 5	11
2.4.4	Slot 6	12
2.4.5	Slot 7	13
2.5	FID Slots	14
2.5.1	Slot 0	14
2.5.2	Slot 1	15
2.5.3	Slot 2	16
3	Point Sources	17
A	Summary	18
A.1	Status	18
A.2	Comments	18

1 Front

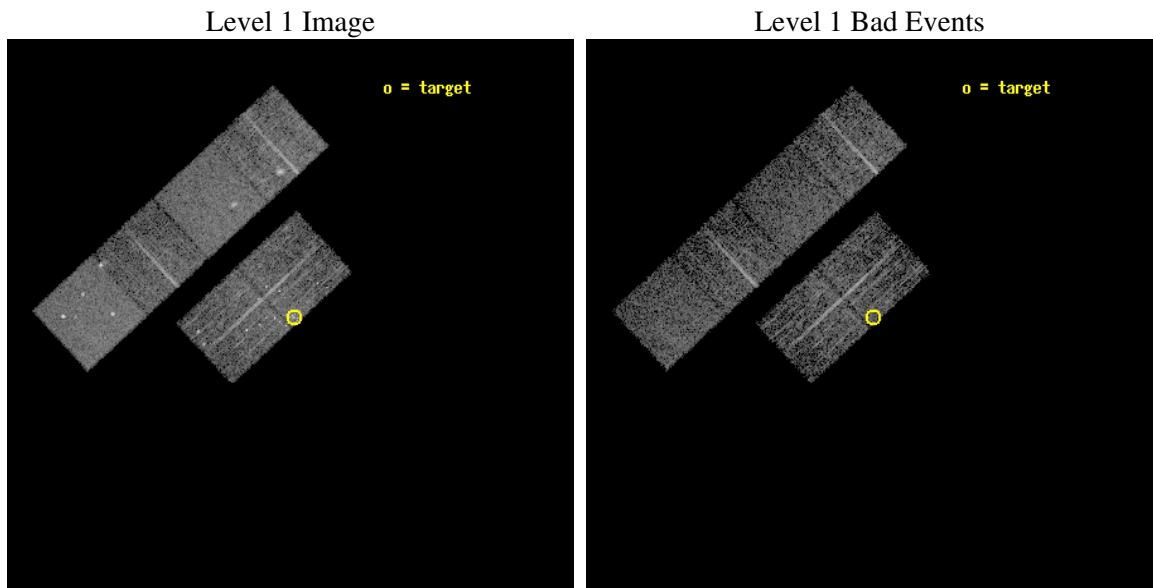
seq_num	600139
obs_id	1582
title	MONITORING THE M31 NUCLEAR REGION
observer	Dr. Stephen Murray
object	M31 NUCLEUS/TRANS
dtcycle	0
cycle	P
ra_targ	10.685
dec_targ	41.268972
ra_nom	10.692964942406
dec_nom	41.260842232045
roll_nom	317.22498989451
revision	2
ontime	4358.4000040591
livetime	4303.2113188943
ontime2	4358.4000040591
ontime3	4358.4000040591
ontime5	4358.4000040591
ontime6	4358.4000040591
ontime7	4358.4000040591
ontime8	4358.4000040591
l2events	48871



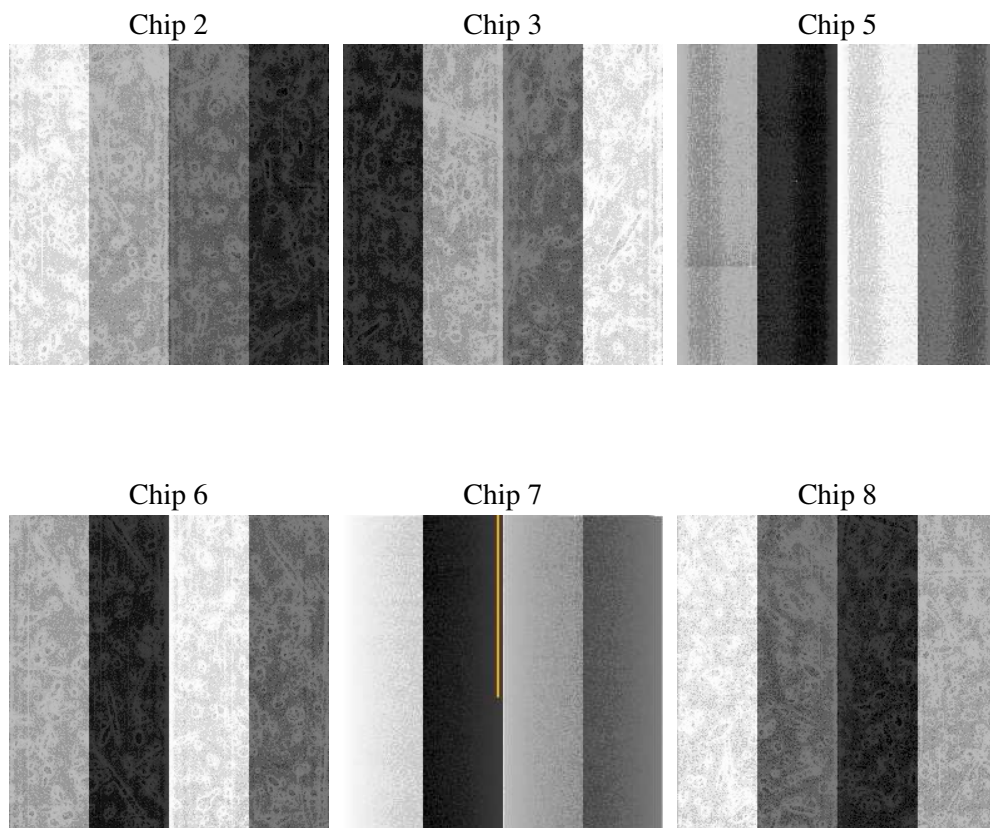
2 OBI

2.1 OBI

2.1.1 Images



2.1.2 Bias



2.1.3 Parameters

obi_num	0
ascdsver	7.6.9
caldsver	3.2.3
date	2006-11-08T20:13:37
revision	2

sched_exp_time	4500.000000
ontime	4362.3818683922
ontime2	4362.3818683922
ontime3	4362.3818683922
ontime5	4362.3818683922
ontime6	4362.3818683922
ontime7	4362.3818683922
ontime8	4362.3818683922
l1events	199290

2.1.4 Events

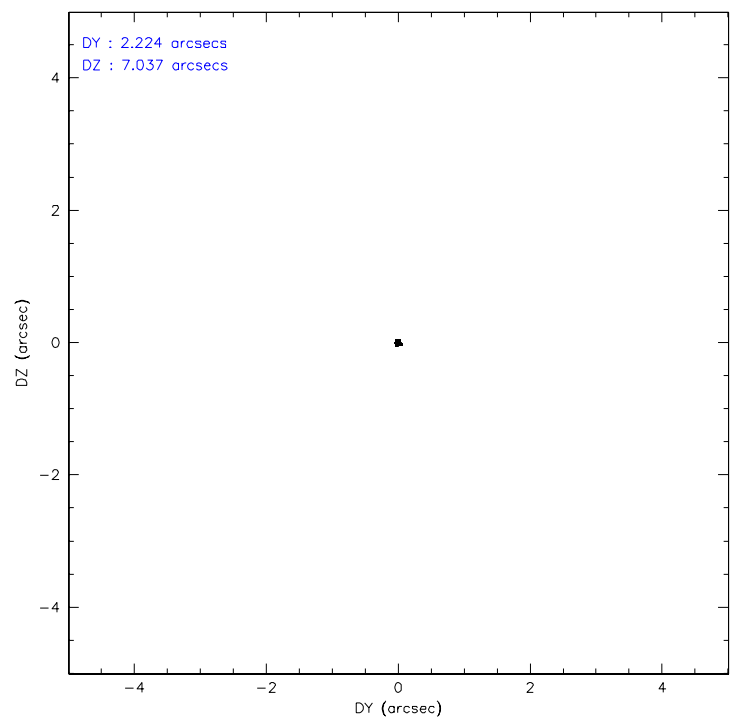
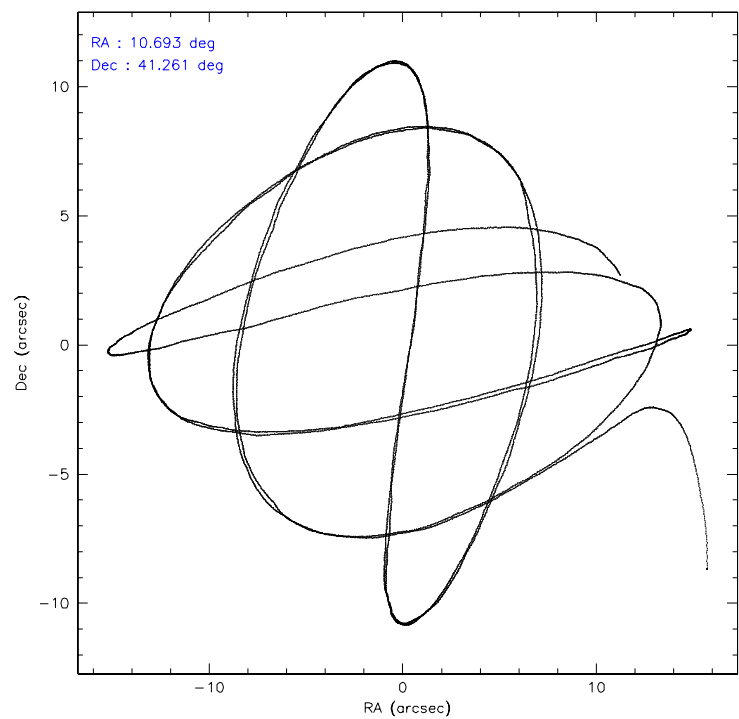
	ccd 2	ccd 3	ccd 5	ccd 6	ccd 7	ccd 8
level 1 events	30994	30542	39762	26239	35356	36397
rejected events	24542	23751	21471	22796	21591	27825
rejected %	79%	77%	53%	86%	61%	76%

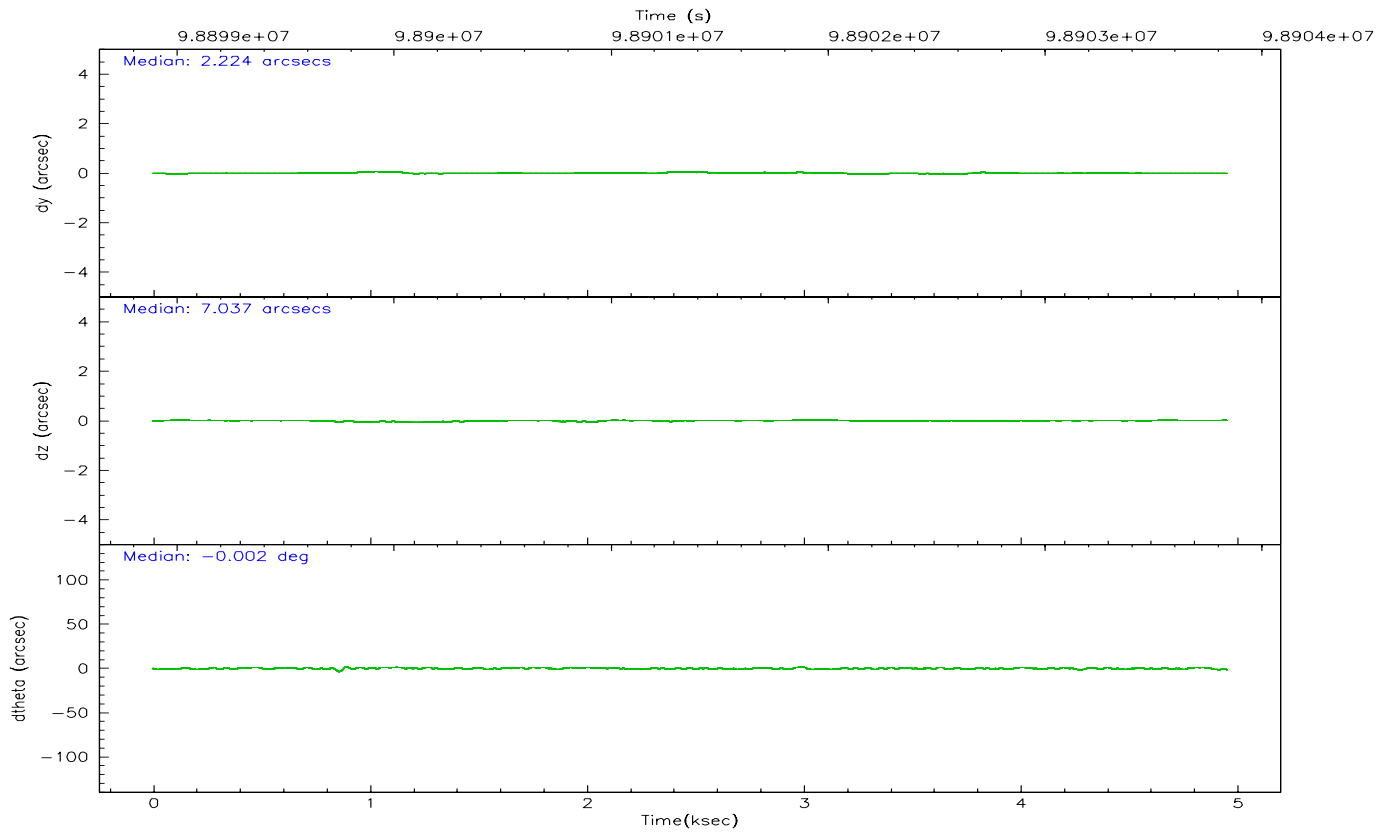
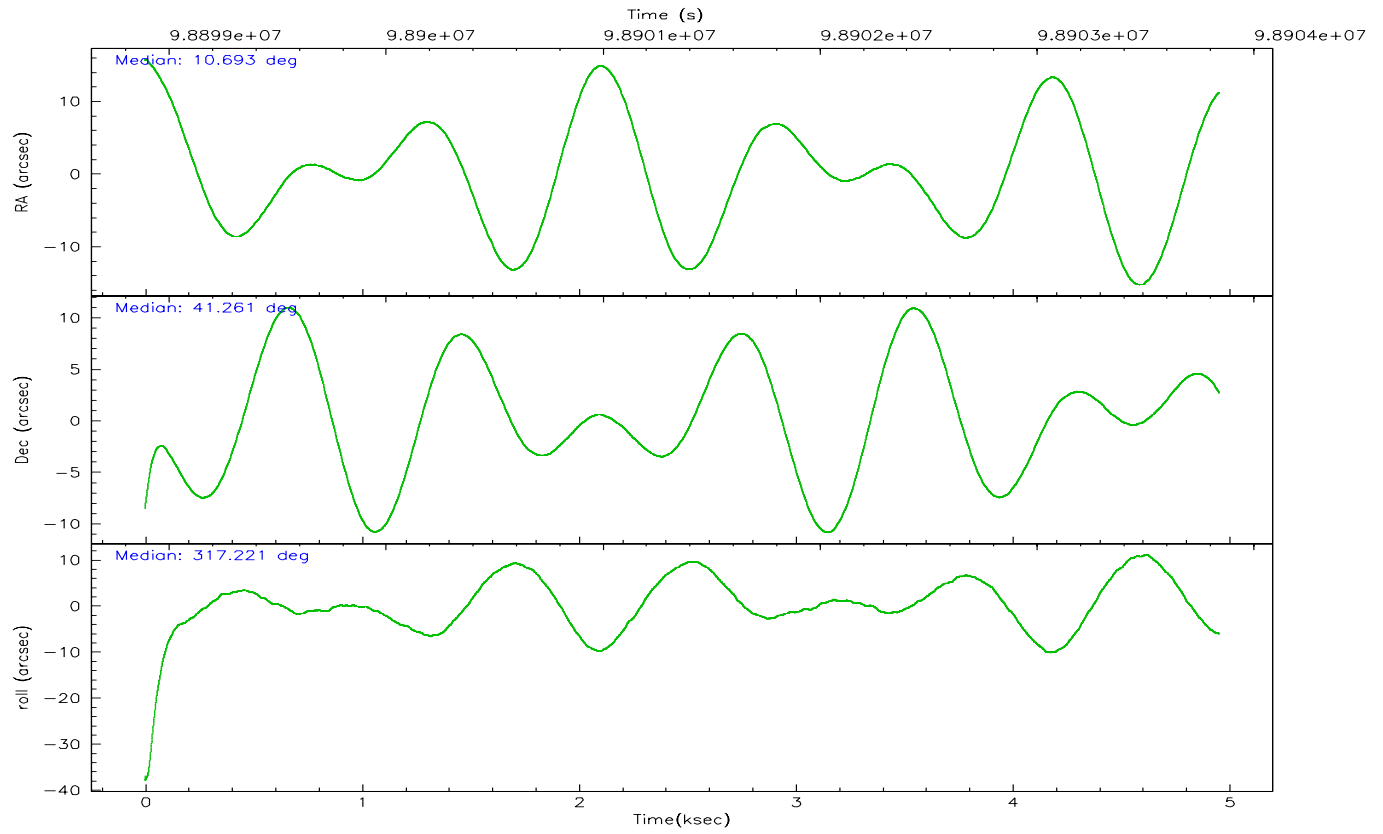
	ccd 2	ccd 3	ccd 5	ccd 6	ccd 7	ccd 8
grade 0 events	4093	4441	2605	1558	1089	3399
	13%	14%	6%	5%	3%	9%
grade 1 events	60	44	74	14	24	17
	0%	0%	0%	0%	0%	0%
grade 2 events	968	942	5342	675	3385	1634
	3%	3%	13%	2%	9%	4%
grade 3 events	382	380	413	315	800	795
	1%	1%	1%	1%	2%	2%
grade 4 events	394	351	395	318	798	749
	1%	1%	0%	1%	2%	2%
grade 5 events	932	1058	1874	1143	2380	1465
	3%	3%	4%	4%	6%	4%
grade 6 events	621	684	9557	583	7706	1998
	2%	2%	24%	2%	21%	5%
grade 7 events	23544	22642	19502	21633	19174	26340
	75%	74%	49%	82%	54%	72%

2.2 Compared Parameters

Parameter	Planned	Actual	Parameter	Planned	Actual
Instrument	ACIS	ACIS	Obspar format version number	6	6
Detector	ACIS-235678	ACIS-235678	Obspar file type	PREDICTED	ACTUAL
Grating	NONE	NONE	Obspar update status	NONE	UPDATED
Data mode	FAINT	FAINT	Number of optional ACIS chips dropped	0	0
Observation mode	POINTING	POINTING	On-chip summing requested	N	N
Pointing RA	10.657327	10.6929649424063	Subarray requested	NONE	NONE
Pointing Dec	41.266937	41.26084223204514	Alternating exposures requested	N	N
Pointing Roll	317.039887	317.2249898945101	Primary exposure time	0.000000	3.2
SIM focus pos (mm)	-0.782348	-0.7809083437167272			
SIM defocus (mm)	0	0.001439871863259334			
SIM translation stage pos (mm)	-233.592463	-233.5874344608287			
SIM translation stage offset (mm)	0	-0.005018542100998502			
Observation start time	98899339.184000	98898241.587928			
Observation start date	2001-02-18T16:01:15	2001-02-18T15:44:01			
Observation end time	98903839.184000	98904864.11318401			
Observation end date	2001-02-18T17:16:15	2001-02-18T17:34:24			
Read mode	TIMED	TIMED			

2.3 Aspect



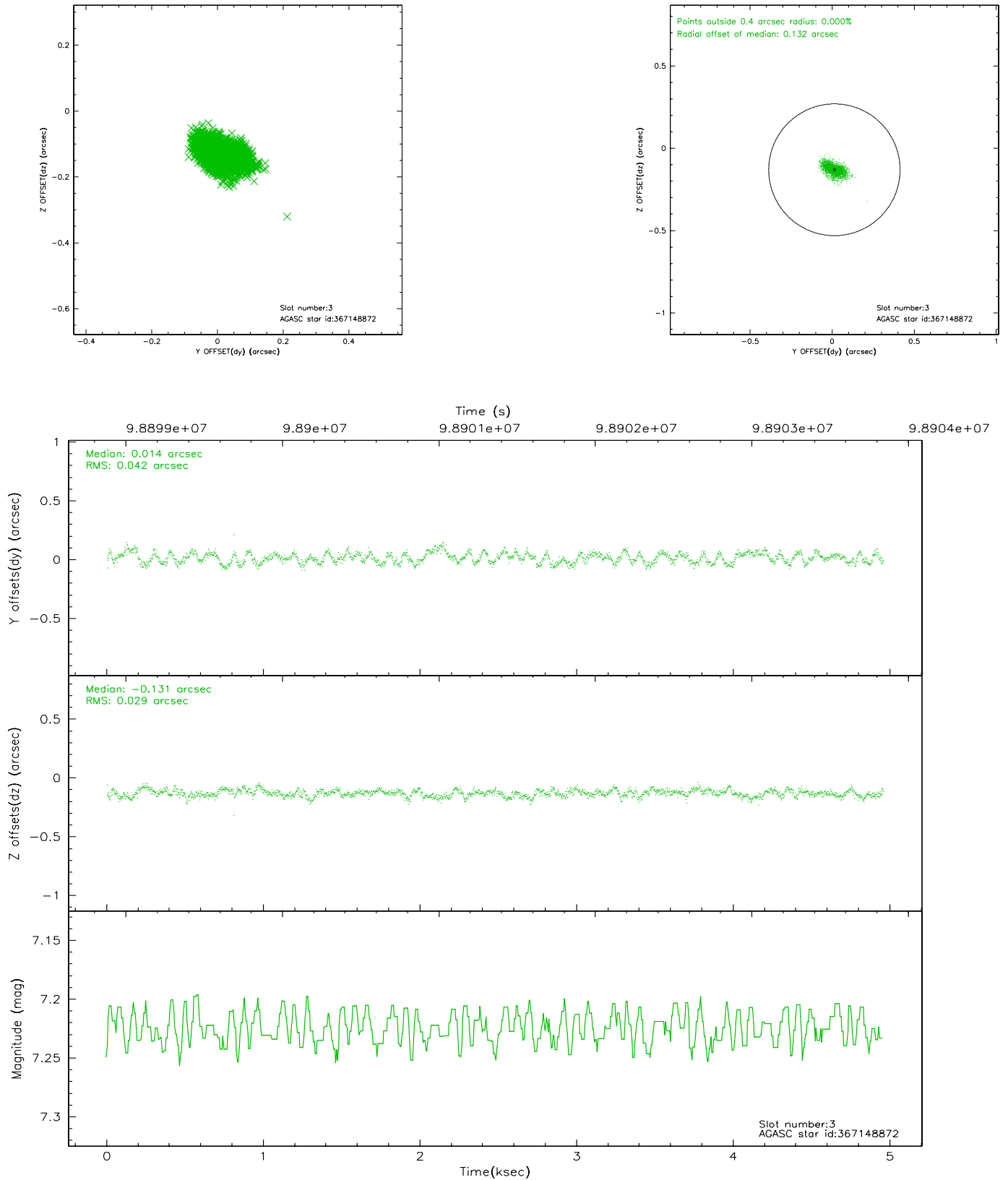


Slot Statistics

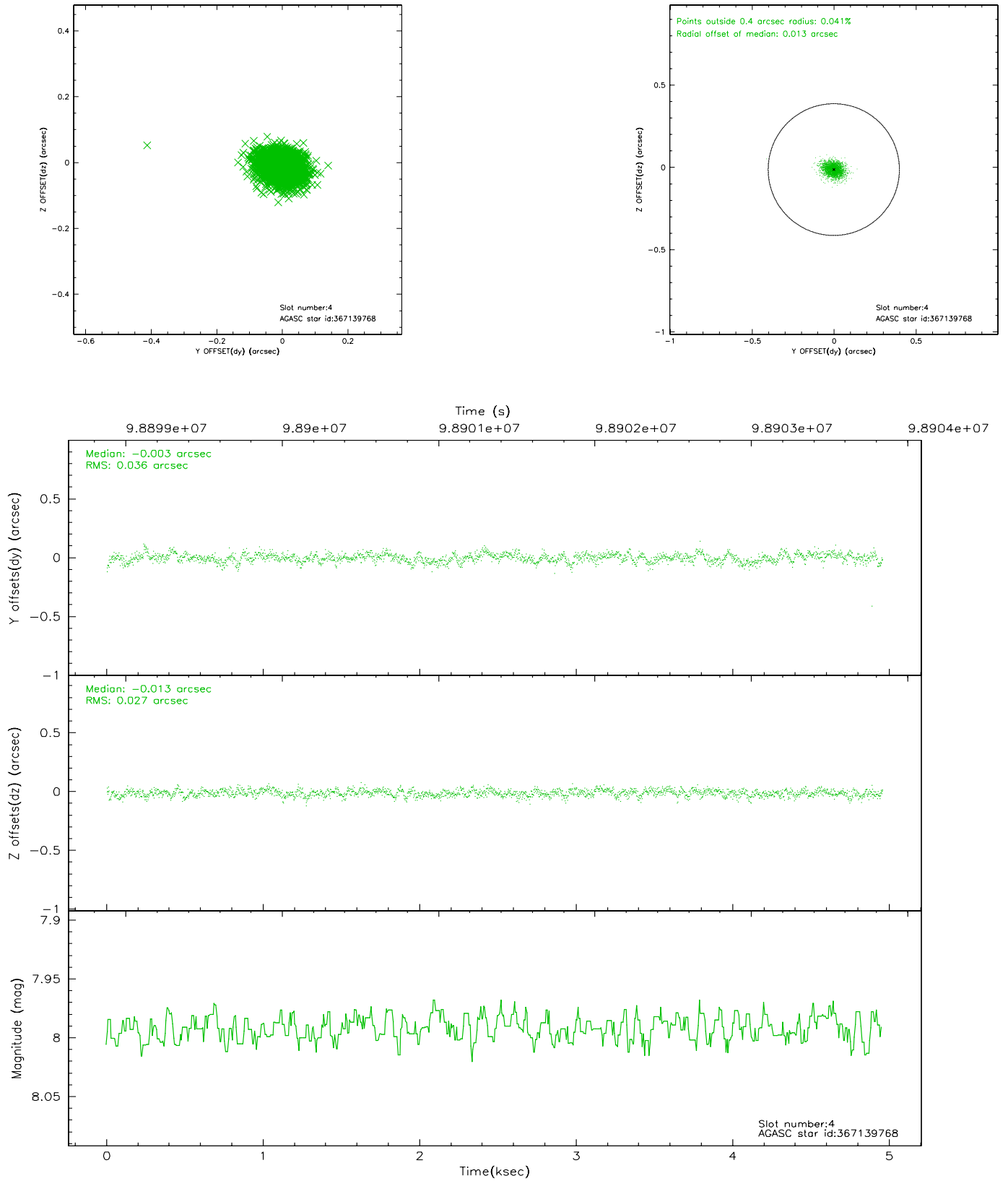
slot	status	id	mag	n_pts	med_dy	med_dz	dr1	dr2	ra	dec	mean_y	mean_z
0	FID	ACIS-I-2	7.16	1209	-0.038	-0.045	0.008	0.014	0.000000	0.000000	-756.62	-836.84
1	FID	ACIS-I-4	7.18	1209	-0.050	0.041	0.005	0.009	0.000000	0.000000	2156.87	1068.81
2	FID	ACIS-I-5	7.23	1209	-0.013	0.072	0.008	0.013	0.000000	0.000000	-1808.84	1068.08
3	GUIDE	367148872	7.23	2416	0.014	-0.131	0.054	0.086	10.505940	40.688258	1118.55	-1805.81
4	GUIDE	367139768	7.99	2418	-0.003	-0.013	0.047	0.079	11.069715	40.685175	2251.20	-763.91
5	GUIDE	367657272	8.42	2418	0.168	0.139	0.055	0.084	11.834471	41.298907	2239.07	2269.95
6	GUIDE	367671800	9.41	2417	-0.124	0.037	0.085	0.137	10.554735	41.964935	-1911.56	1653.08
7	GUIDE	367665472	9.49	2416	-0.056	-0.033	0.089	0.141	10.241611	41.730843	-1956.87	463.84

2.4 Star Slots

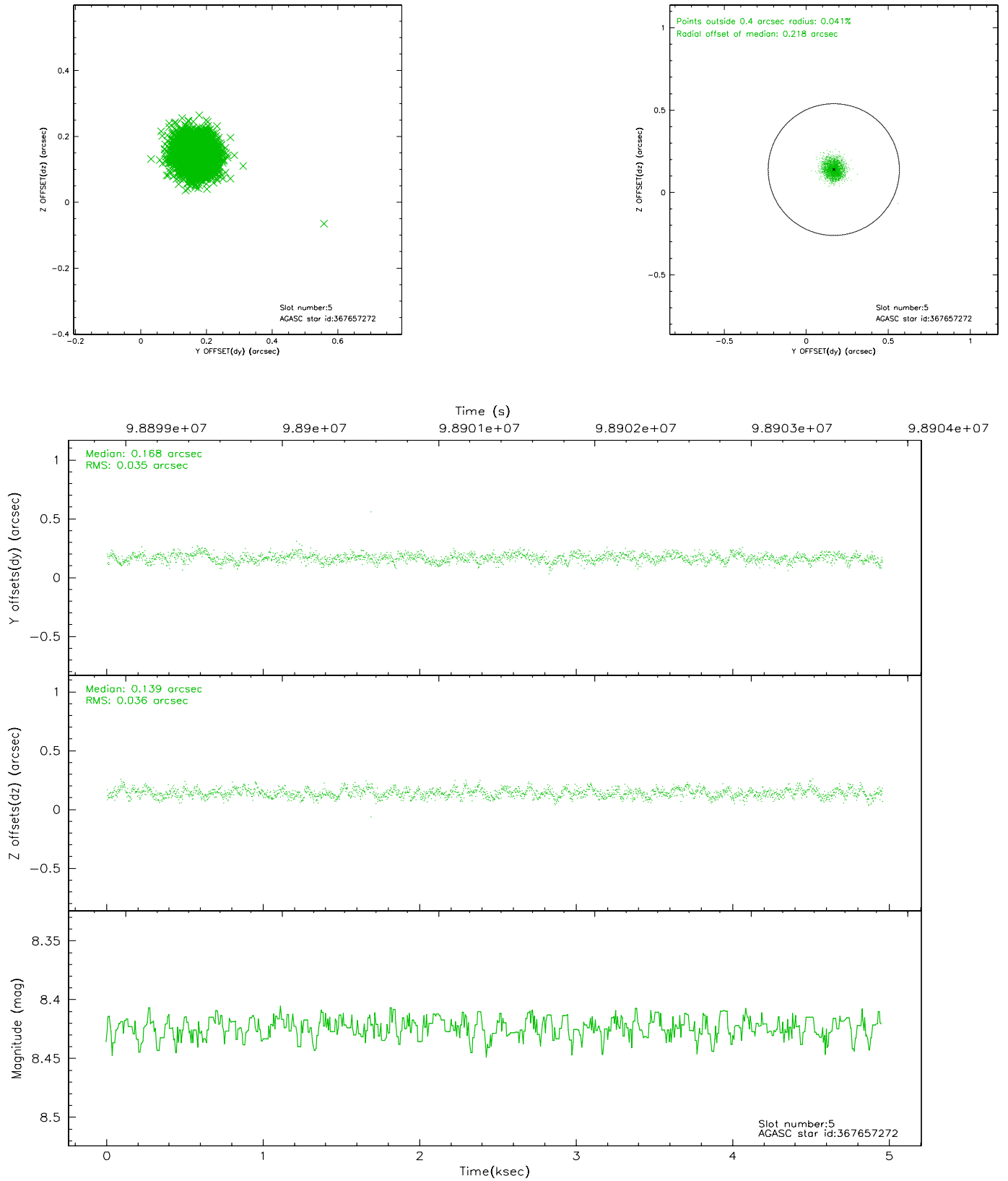
2.4.1 Slot 3



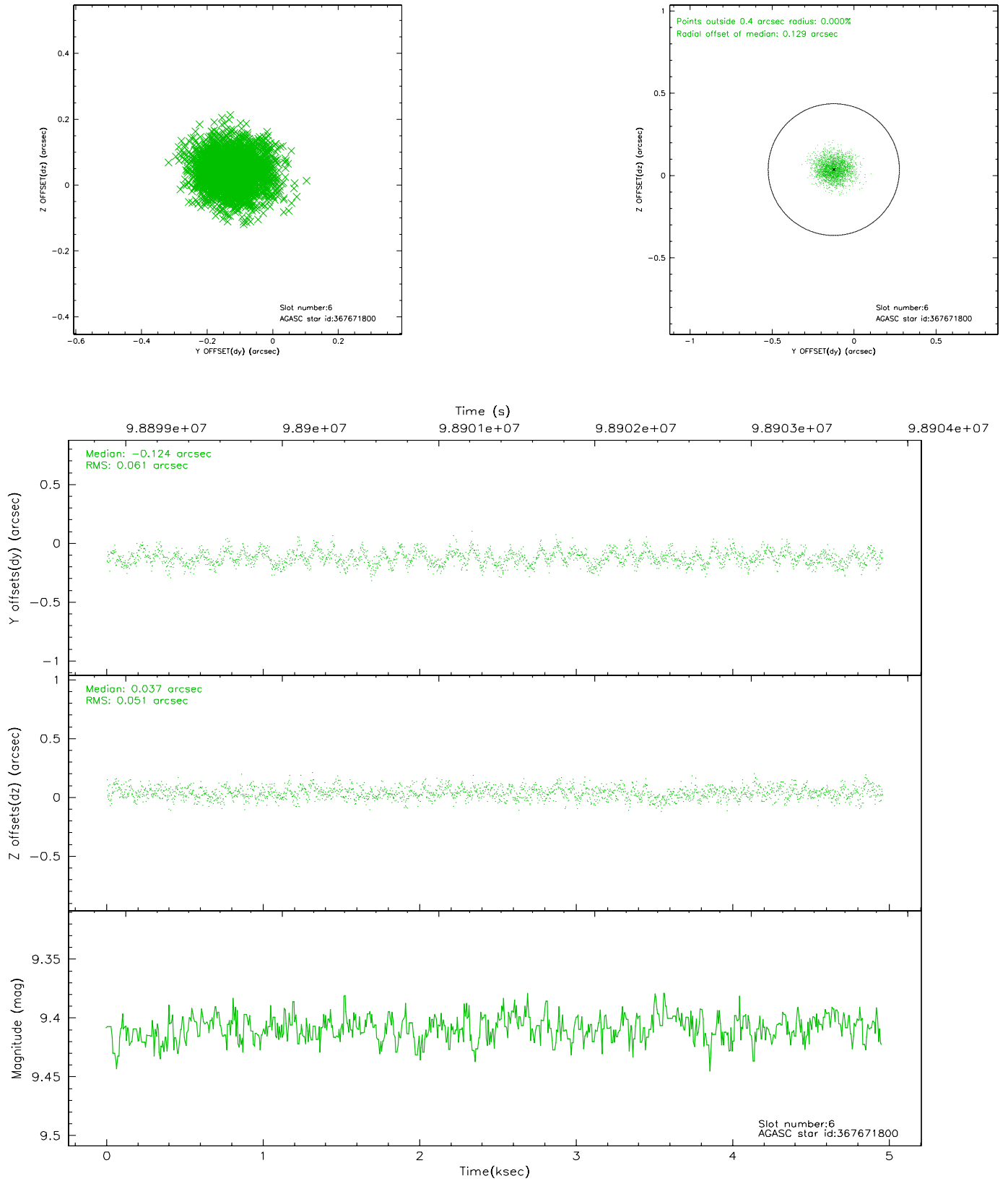
2.4.2 Slot 4



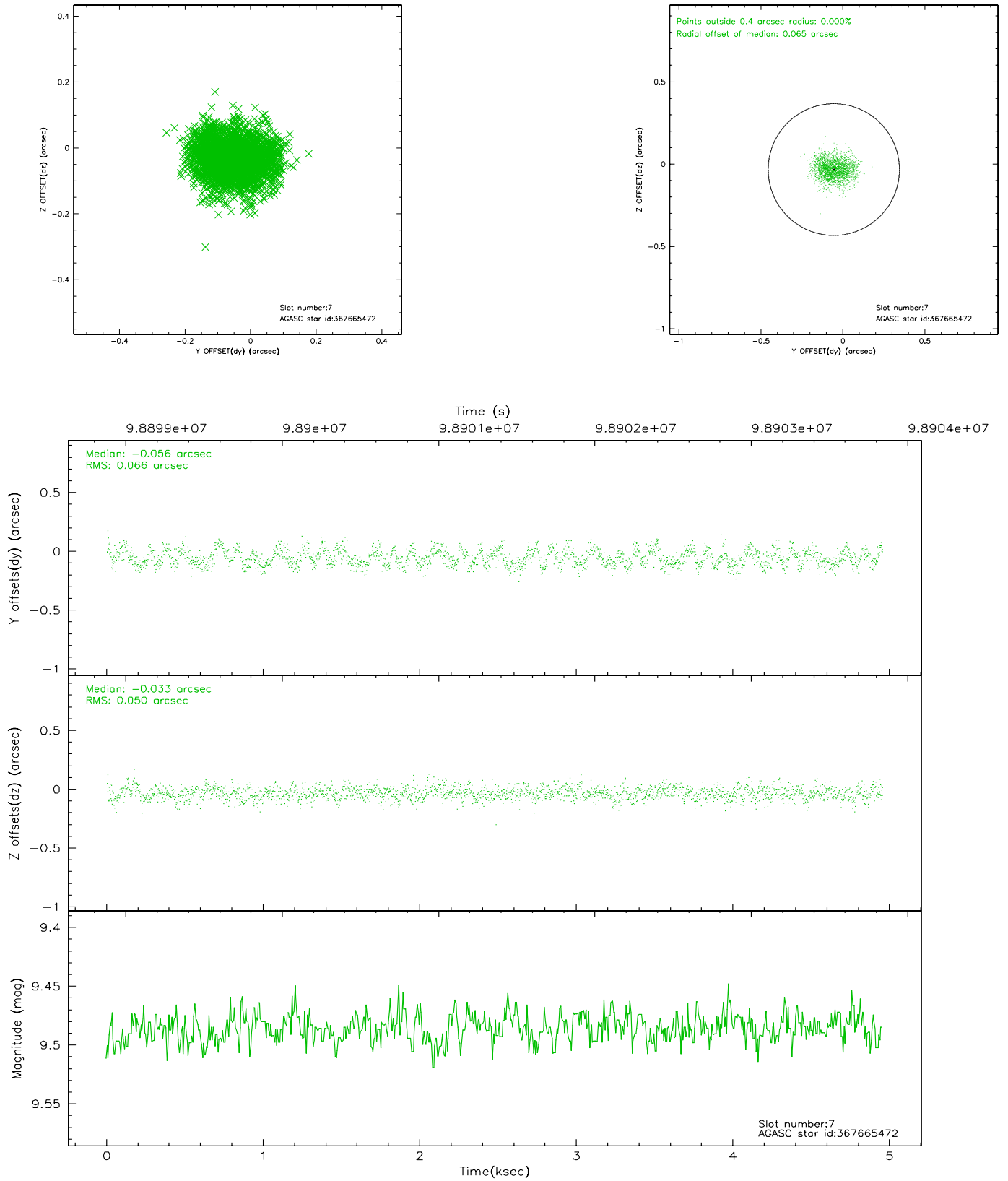
2.4.3 Slot 5



2.4.4 Slot 6

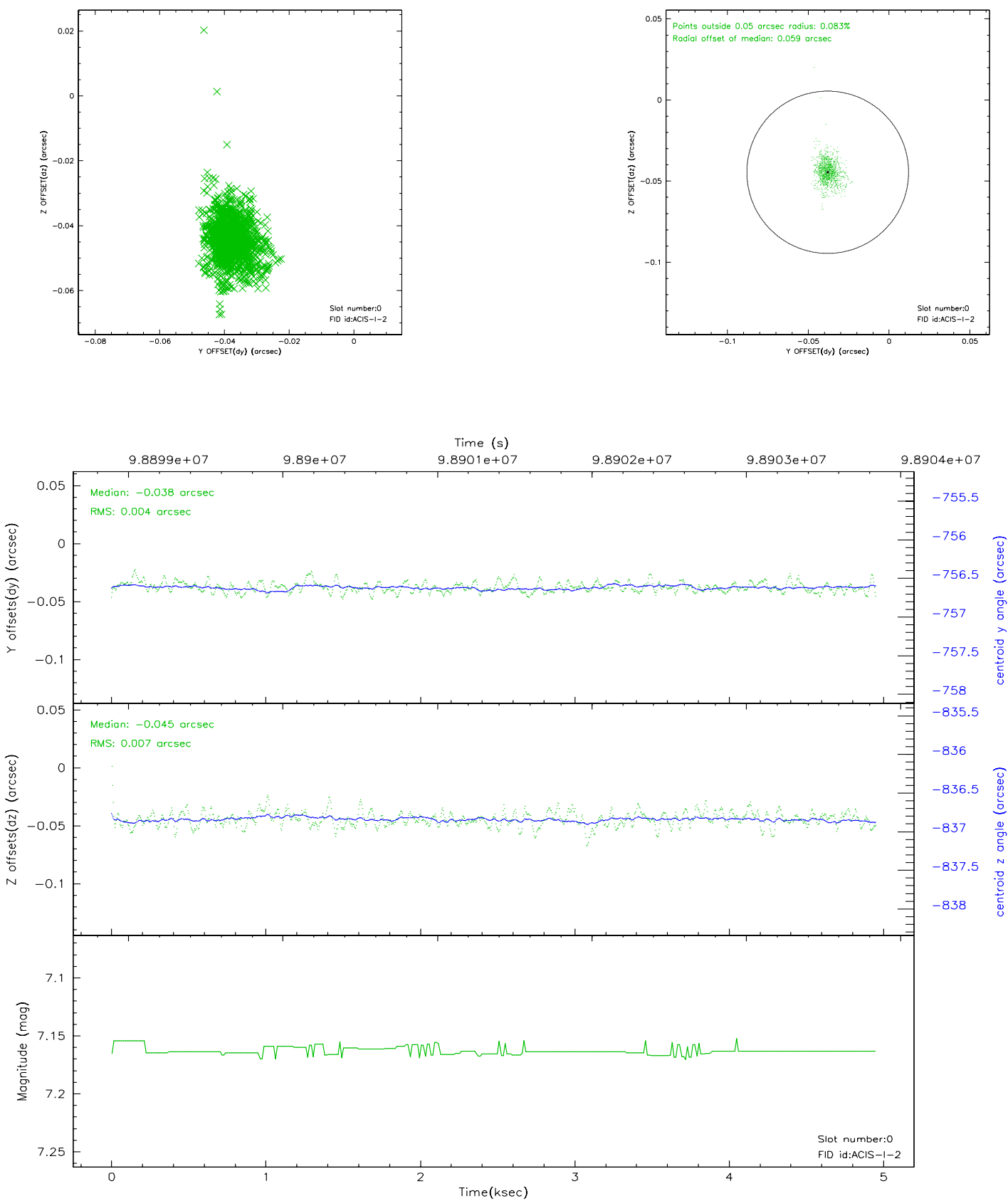


2.4.5 Slot 7

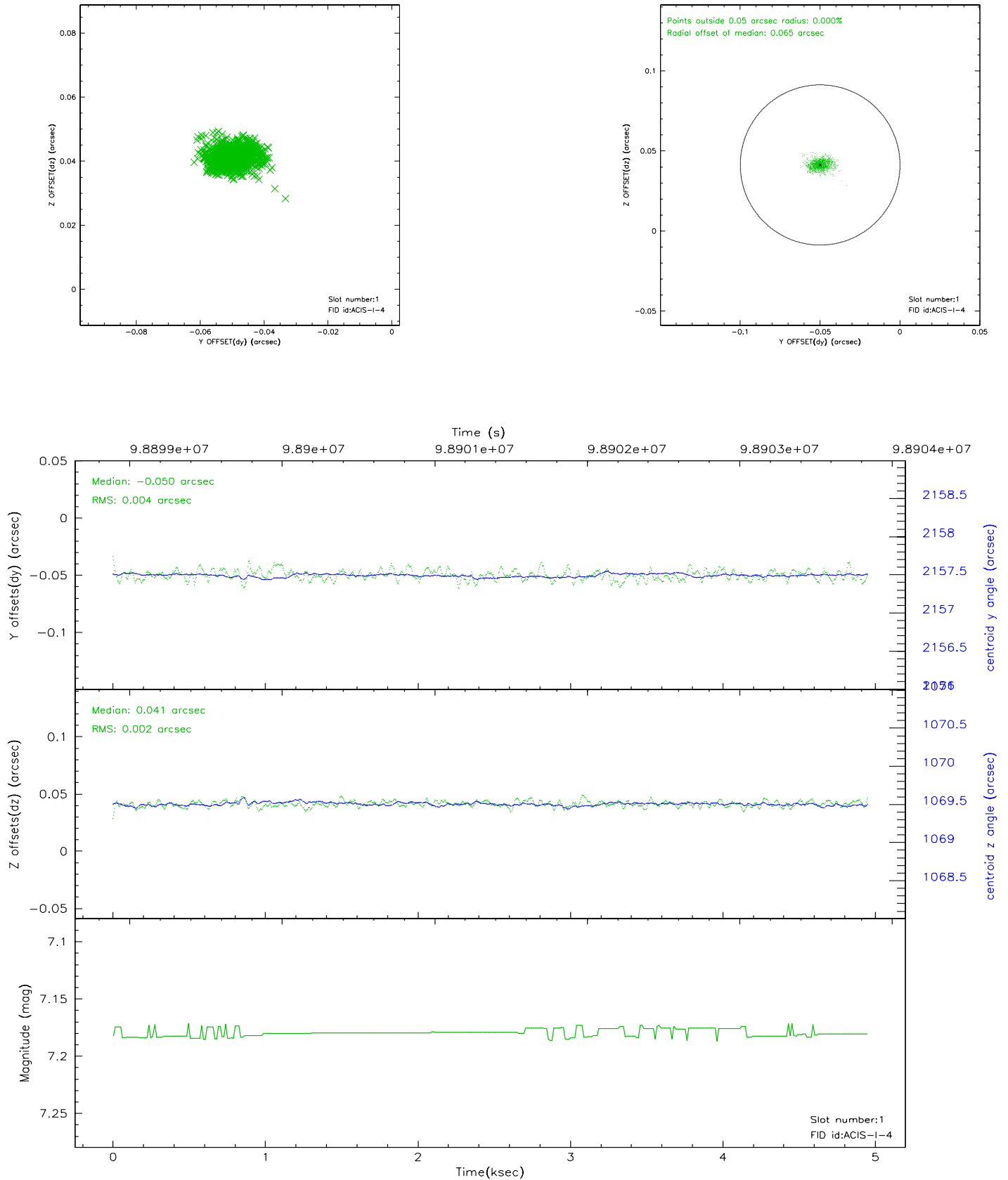


2.5 FID Slots

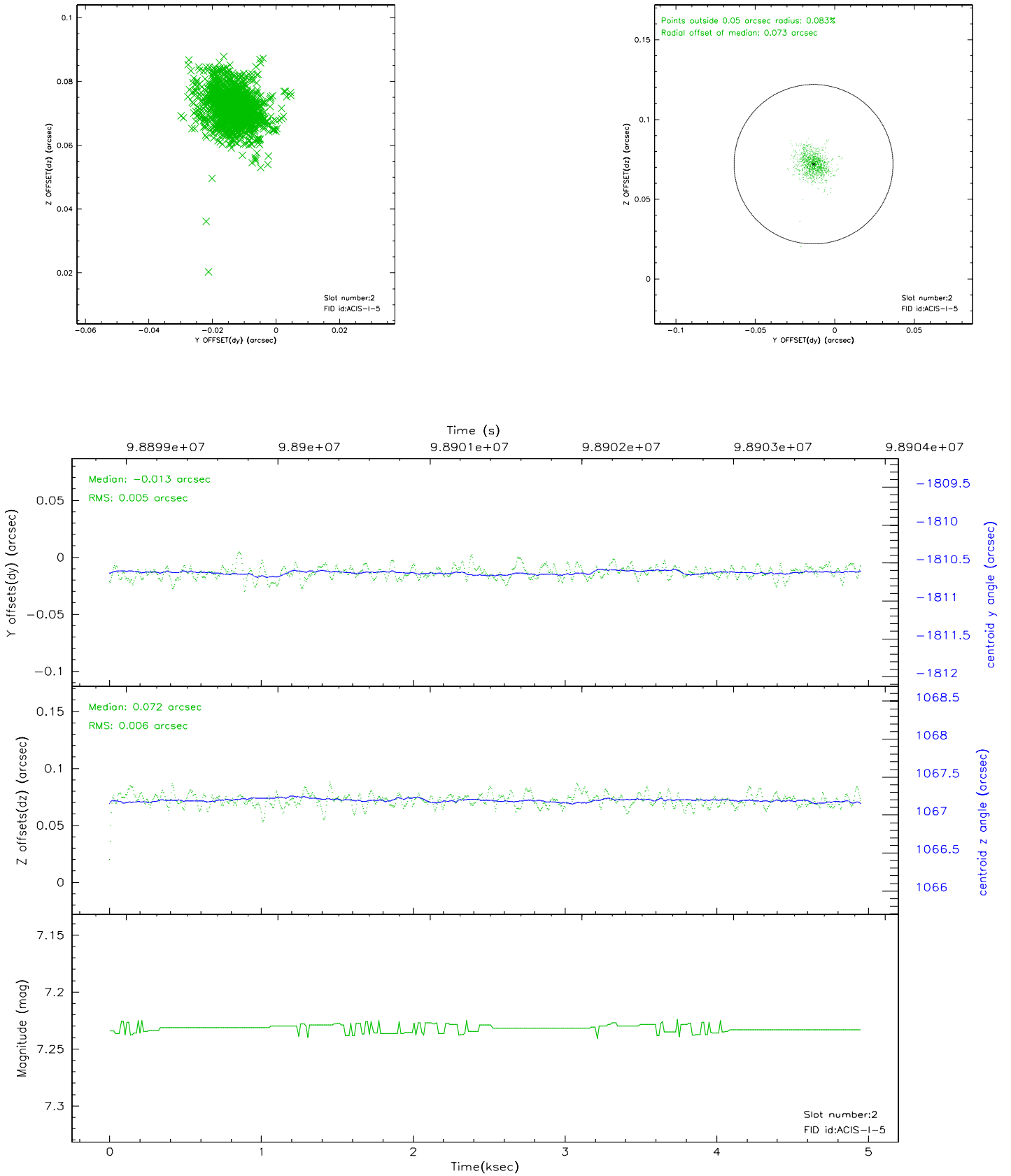
2.5.1 Slot 0



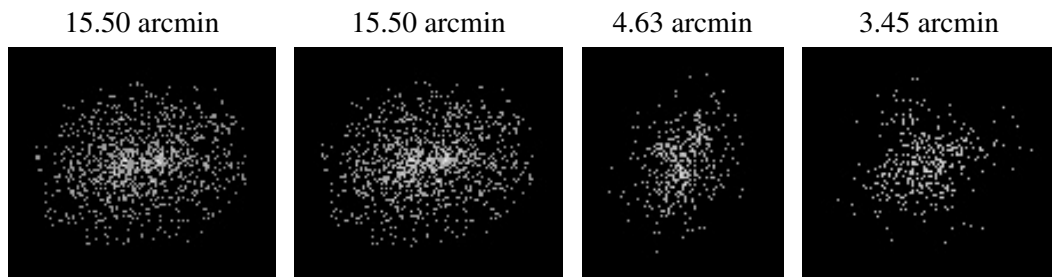
2.5.2 Slot 1



2.5.3 Slot 2



3 Point Sources



A Summary

A.1 Status

V&V Scientist	Jen Lauer
V&V Date (YYYY-MM-DD)	2006.11.09
V&V Edition	1
V&V Disposition and Status	OK
V&V Charge Time	4.358

A.2 Comments

Monitor constraint not satisfied. Requested monitor of 25 - 35 days after 1581, but observation occurred 66 days after 1581. CDO in consultation with PI/coIs judges constraint as satisfied.

Target near the edge of the chip.