

# V&V Reference Report

## L2 ASCDS Version : 10.1.1

Observation 15742 - L2 Version 1  
Chandra X-Ray Center

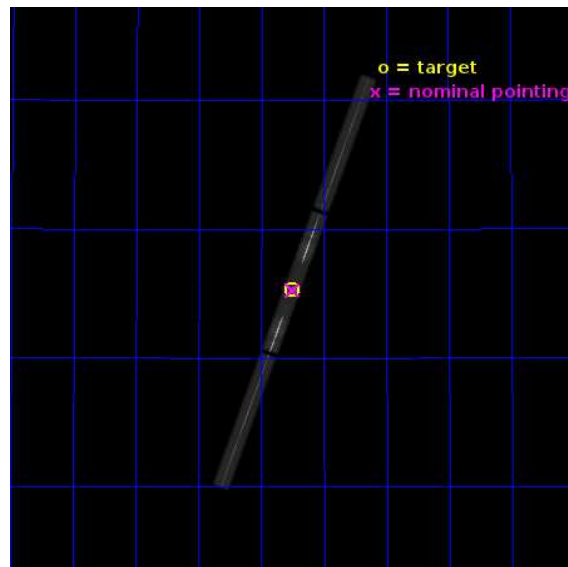
L2 Processing Date : Nov 11 2013

## Contents

<b>1</b>	<b>Front</b>	<b>2</b>
<b>2</b>	<b>OBI</b>	<b>3</b>
2.1	OBI . . . . .	3
2.1.1	Images . . . . .	3
2.1.2	Parameters . . . . .	4
2.1.3	Events . . . . .	4
2.2	Compared Parameters . . . . .	5
2.3	Aspect . . . . .	6
2.4	Star Slots . . . . .	9
2.4.1	Slot 3 . . . . .	9
2.4.2	Slot 4 . . . . .	10
2.4.3	Slot 5 . . . . .	11
2.4.4	Slot 6 . . . . .	12
2.4.5	Slot 7 . . . . .	13
2.5	FID Slots . . . . .	14
2.5.1	Slot 0 . . . . .	14
2.5.2	Slot 1 . . . . .	15
2.5.3	Slot 2 . . . . .	16
<b>3</b>	<b>Gratings</b>	<b>17</b>
3.1	LETG Arm . . . . .	17
<b>A</b>	<b>Summary</b>	<b>19</b>
A.1	Status . . . . .	19
A.2	Comments . . . . .	19

# 1 Front

seq_num	300326	Sequence number
obs_id	15742	Observation id
title	Probing mass ejection in novae with high resolution X-ray spectroscopy	Proposal title
observer	Dr Thomas Nelson	Principal investigator
object	A bright nova	Source name
ra_targ	305.878042	Observer's specified target RA [deg]
dec_targ	20.767806	Observer's specified target Dec [deg]
ra_nom	305.87963952703	Nominal RA [deg]
dec_nom	20.763258597688	Nominal Dec [deg]
roll_nom	289.13090266761	Nominal Roll [deg]
revision	1	Processing version of data
ontime	50183.234000325	[s]
livetime	45863.118688953	Ontime multiplied by DTCOR
l2events	8390368	Number of level 2 events

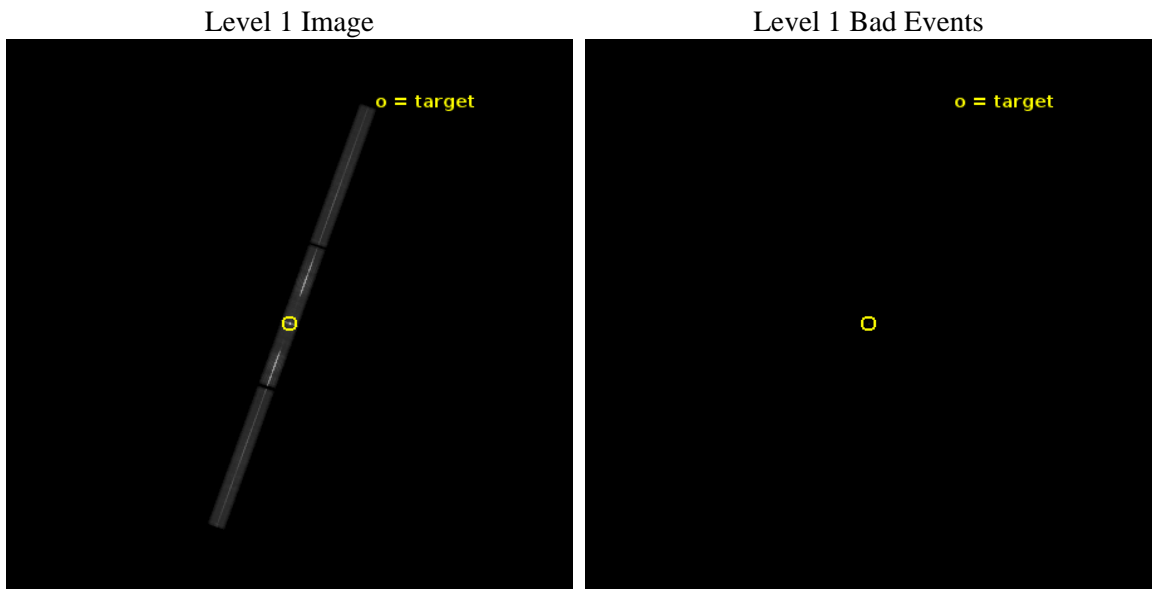




## 2 OBI

### 2.1 OBI

#### 2.1.1 Images



### 2.1.2 Parameters

obi_num	0	Obi number	sched_exp_time	50000.000000	[s] Scheduled observation exposure time
ascdsver	10.1.1	Processing system revision	ontime	50183.234000325	[s]
caldsver	4.5.8	&#160	l1events	9330707	Number of level 1 events
date	2013-11-11T15:03:48	Date and time of file creation	tgmethod	TGDETECT	Method used to create src1a file
revision	1	Processing version of data	zo_pos	(32817.07, 32893.02)	src1a sky pixel position

### 2.1.3 Events

Level 1 Events

	segment 1	segment 2	segment 3
level 1 events	1338251	6635094	1357362
rejected events	21581	34795	21903
rejected %	1%	0%	1%

## 2.2 Compared Parameters

Parameter	Planned	Actual	Parameter	Planned	Actual
Instrument	HRC	HRC	Obspar format version number	7	7
Detector	HRC-S	HRC-S	Obspar file type	PREDICTED	ACTUAL
Grating	LETG	LETG	Obspar update status	NONE	UPDATED
Data mode	OBSERVING	OBSERVING			
Observation mode	POINTING	POINTING			
[deg] Pointing RA	305.855448	305.8796395270283			
[deg] Pointing Dec	20.780957	20.7632585976881			
[deg] Pointing Roll	289.072143	289.1309026676076			
[mm] SIM focus pos	-1.429586	-1.428180813131781			
[mm] SIM defocus	0.1037507710433287	0.1051558262725154			
[mm] SIM translation stage pos	250.455976	250.466033080201			
[mm] SIM translation stage offset	0	-0.01005468664627074			
[s] Observation start time (MET)	500407881.184000	500406858.49638			
Observation start date	2013-11-09T18:10:14	2013-11-09T17:54:18			
[s] Observation end time (MET)	500457881.184000	500459232.92425			
Observation end date	2013-11-10T08:03:34	2013-11-10T08:27:12			

## 2.3 Aspect

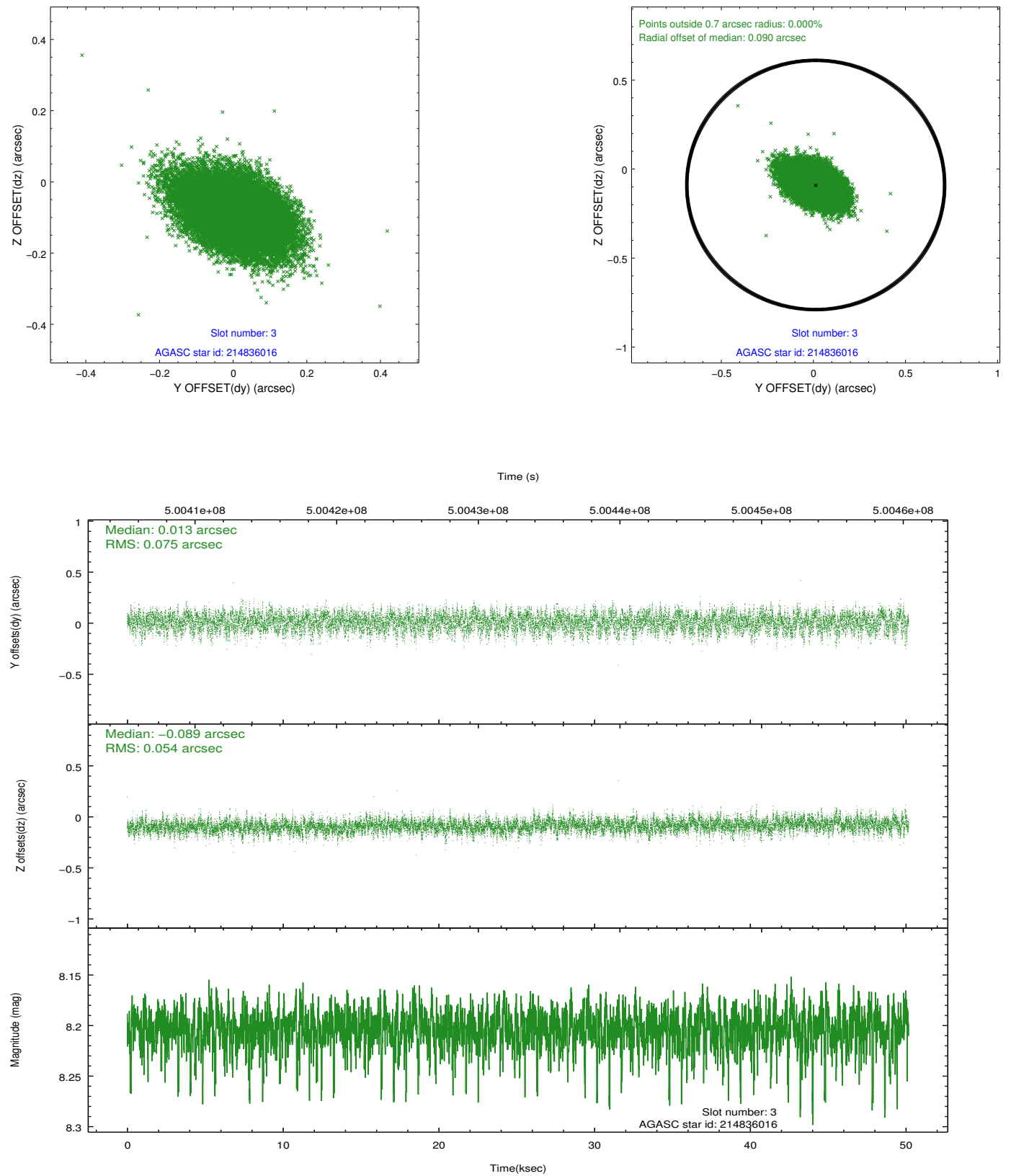


### Slot Statistics

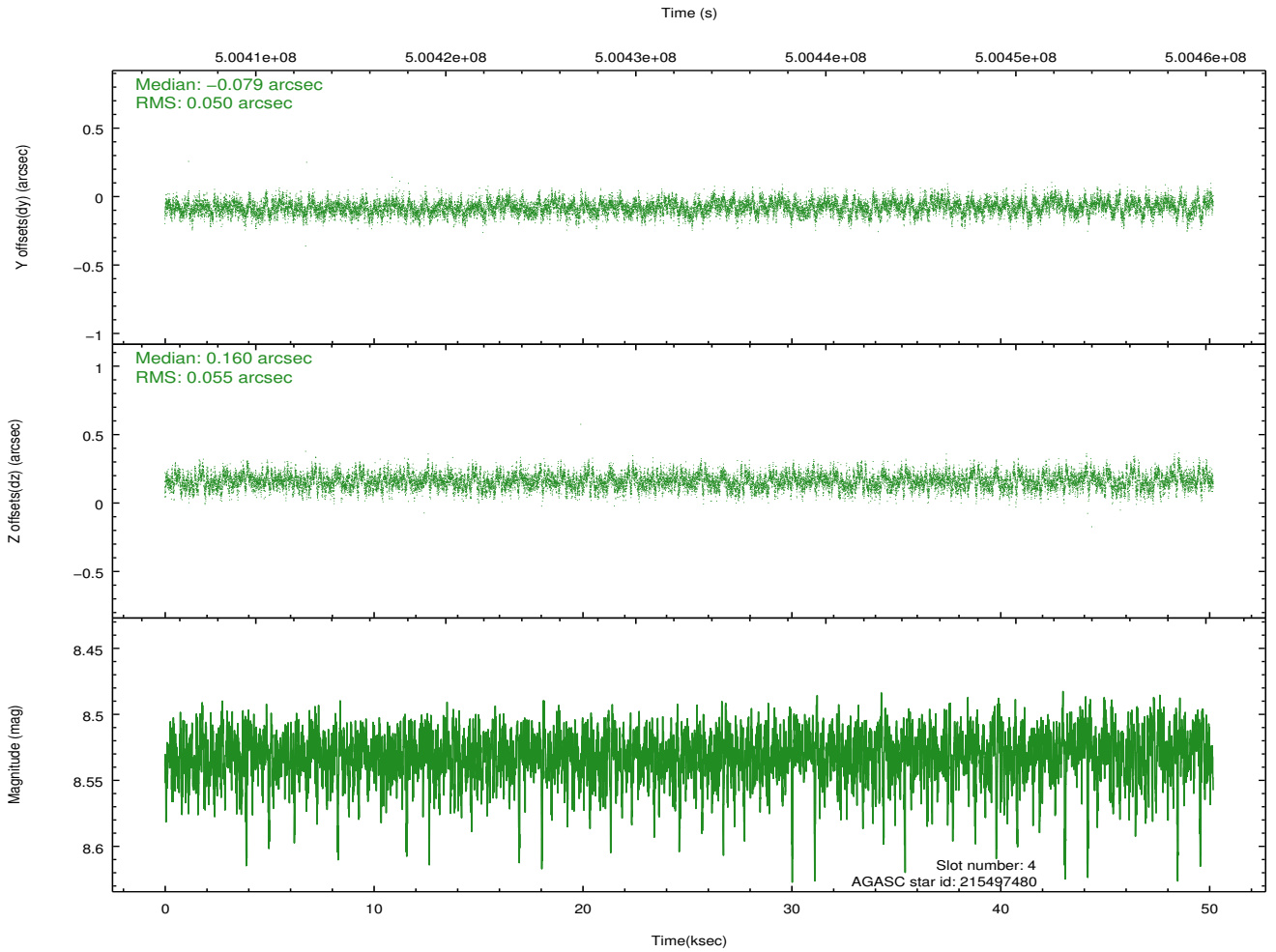
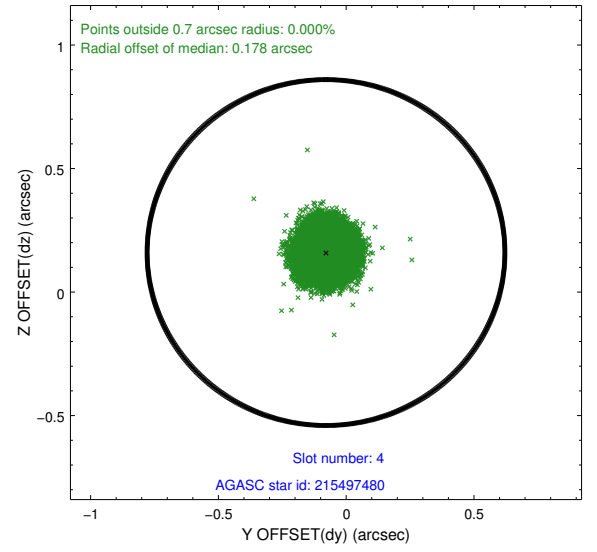
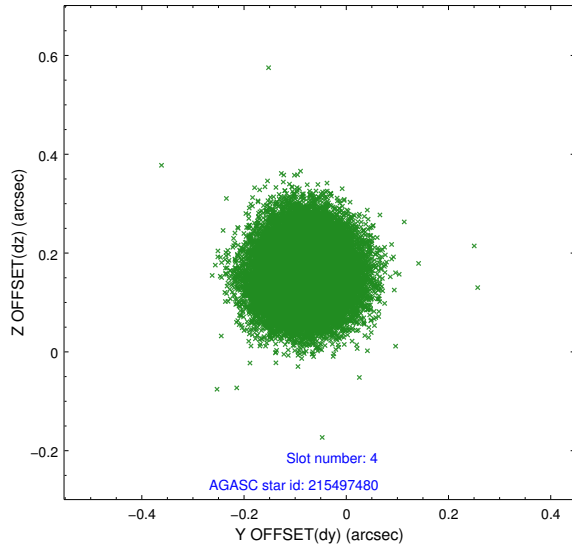
slot	status	id	mag	n_pts	med_dy	med_dz	dr1	dr2	ra	dec	mean_y	mean_z
0	FID	HRC-S-1	7.04	12240	0.059	-0.171	0.037	0.051	0.000000	0.000000	-1170.21	-463.95
1	FID	HRC-S-2	7.02	12240	0.237	-0.121	0.024	0.058	0.000000	0.000000	1229.56	-456.58
2	FID	HRC-S-3	7.04	12241	0.081	-0.007	0.042	0.053	0.000000	0.000000	-1172.80	565.71
3	GUIDE	214836016	8.20	24481	0.013	-0.089	0.096	0.163	305.369551	20.098083	1784.86	-2354.40
4	GUIDE	215497480	8.53	24477	-0.079	0.160	0.080	0.126	306.153937	21.105146	-776.25	1329.07
5	GUIDE	215499808	8.44	24479	-0.116	0.082	0.069	0.115	306.327211	20.993933	-208.86	1750.01
6	GUIDE	214836272	7.95	24469	0.135	-0.179	0.073	0.119	305.520357	20.358881	1066.26	-1564.86
7	GUIDE	214958928	8.28	24475	0.049	0.025	0.076	0.121	306.505103	20.582194	1387.66	1837.24

## 2.4 Star Slots

### 2.4.1 Slot 3

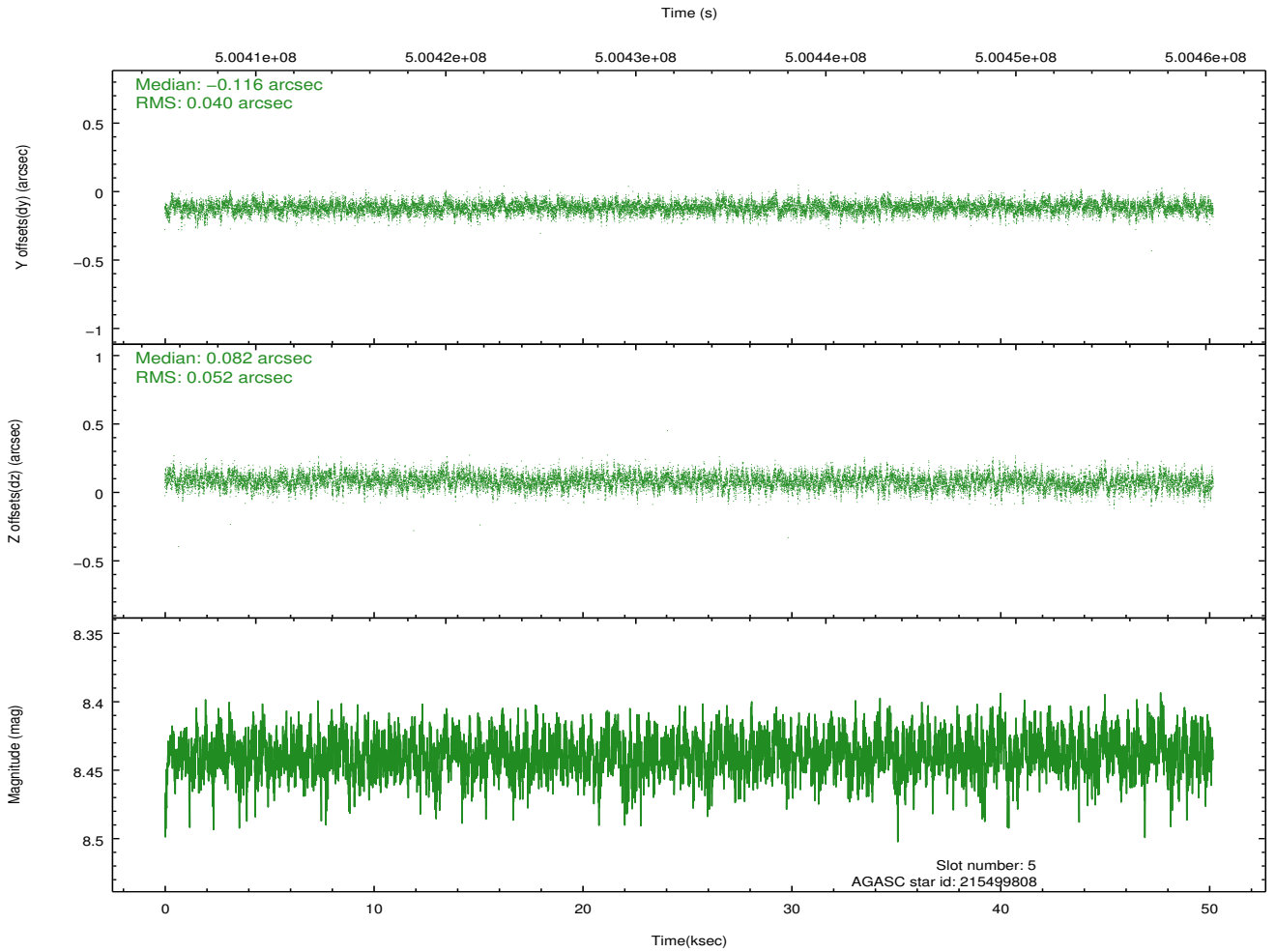
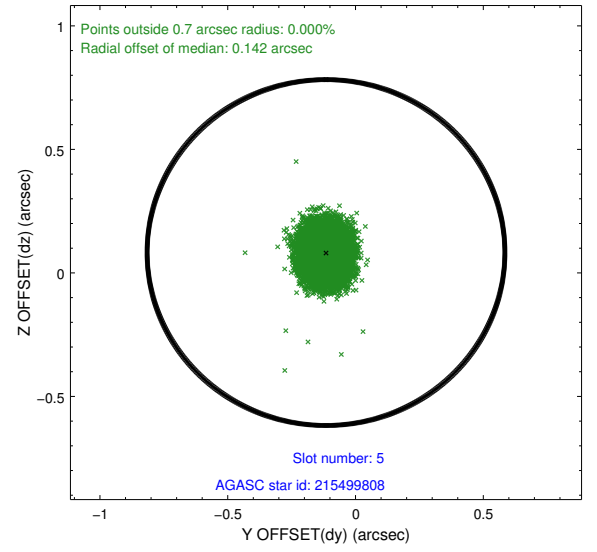
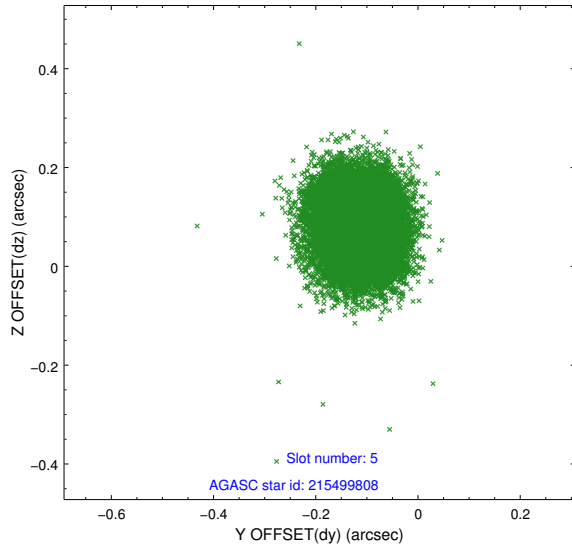


## 2.4.2 Slot 4

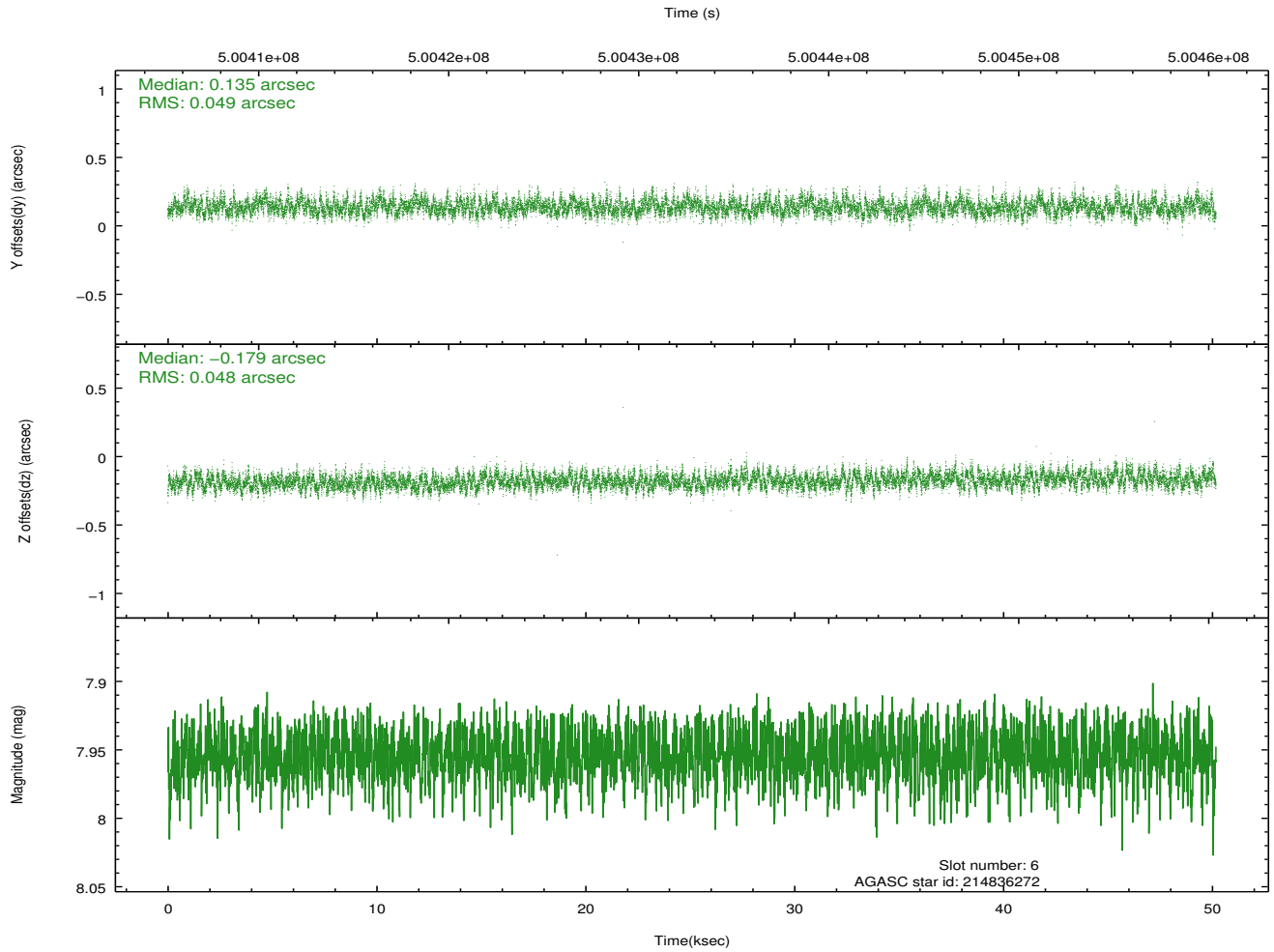
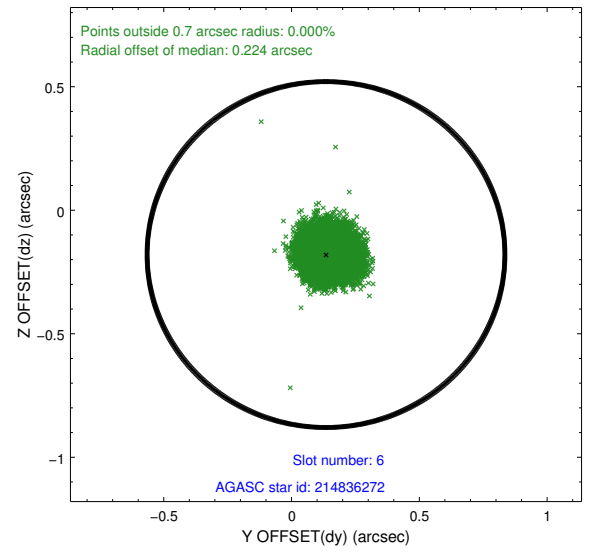
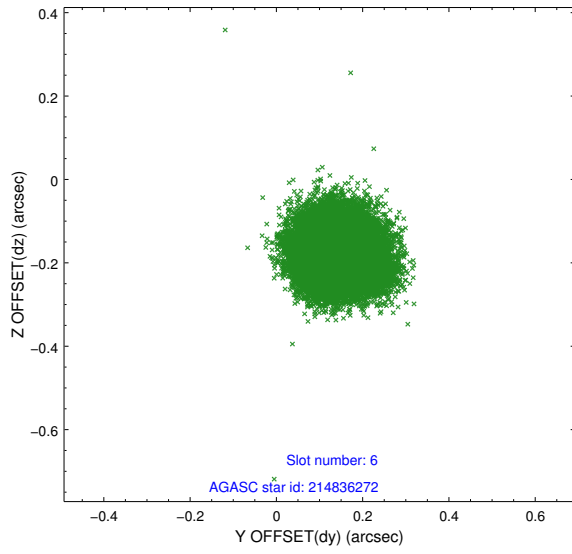




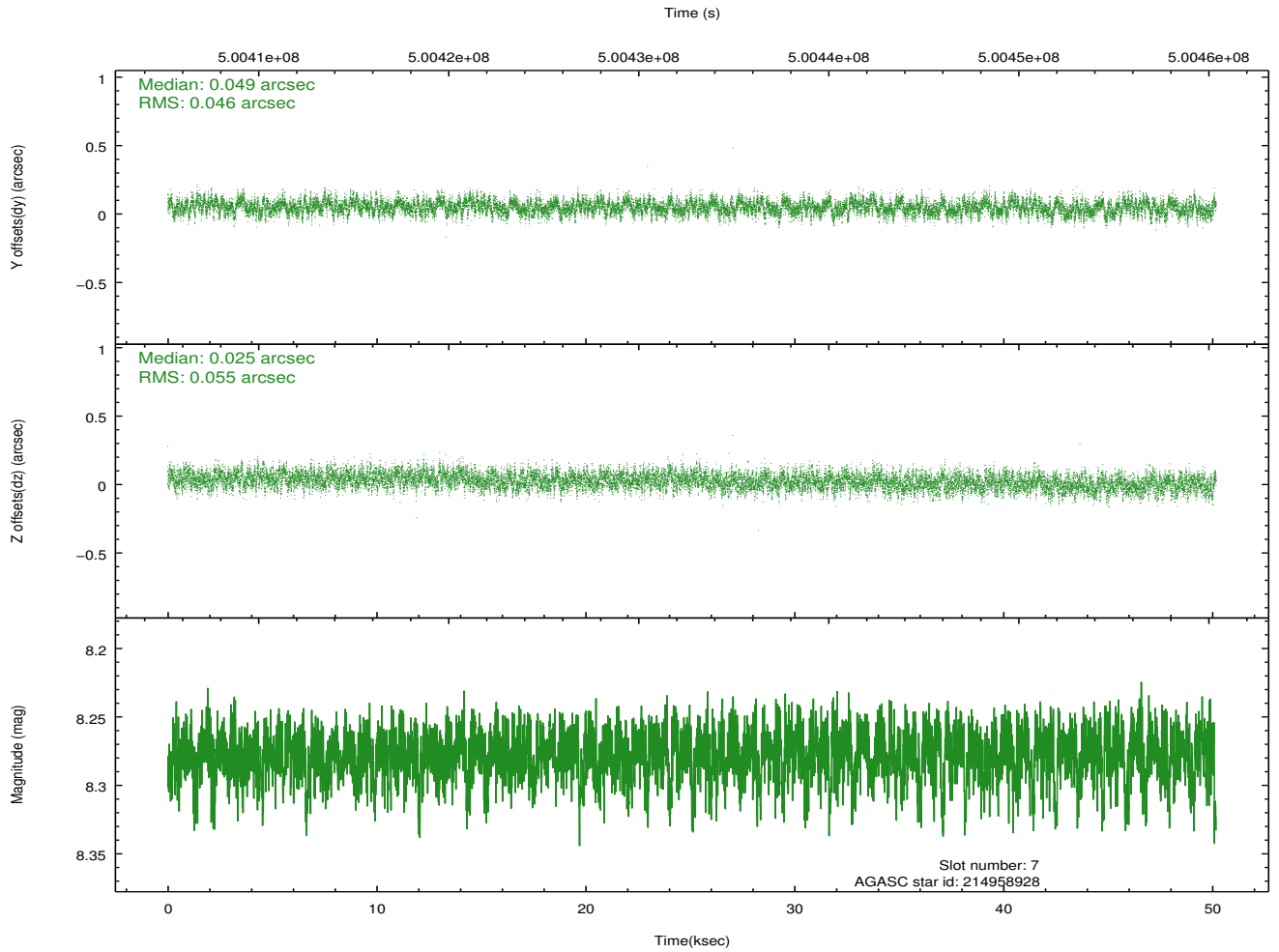
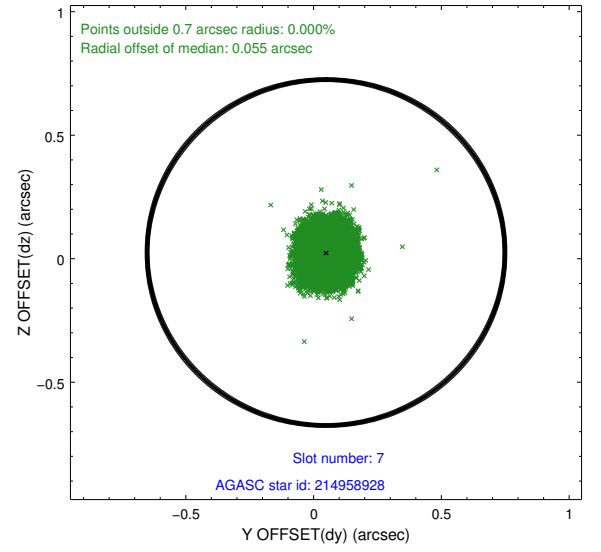
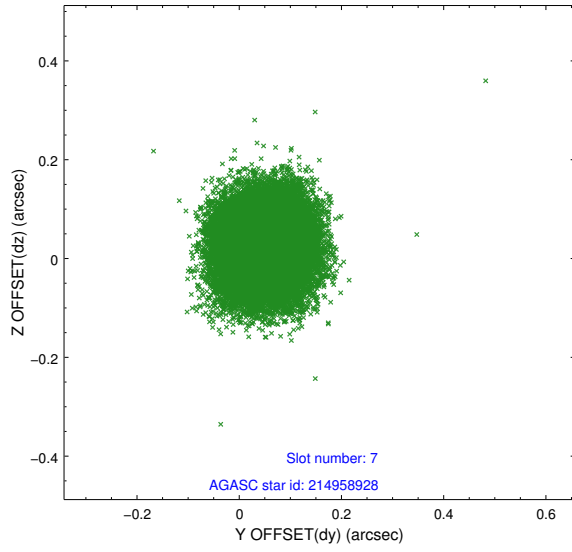
### 2.4.3 Slot 5



## 2.4.4 Slot 6

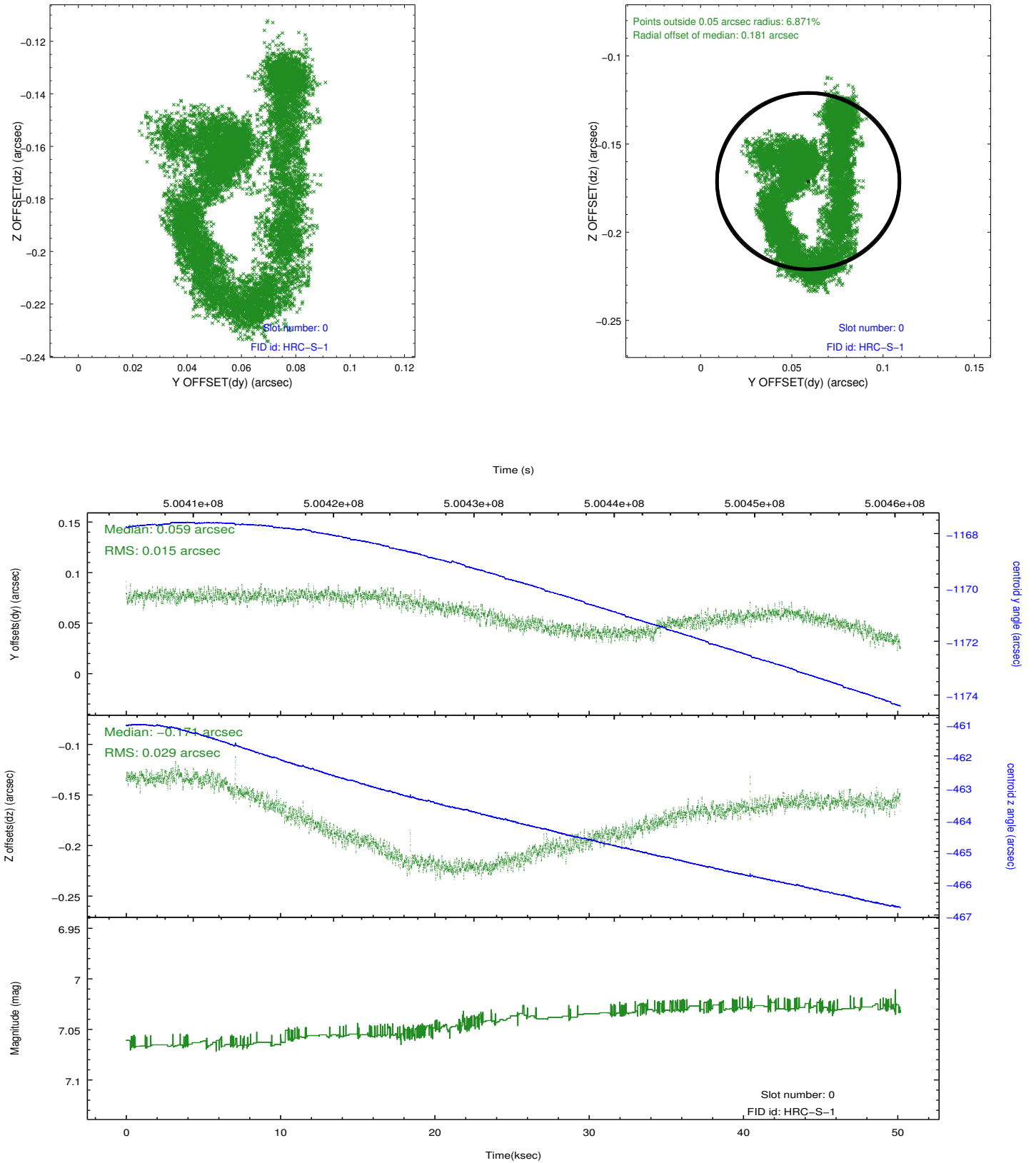


## 2.4.5 Slot 7

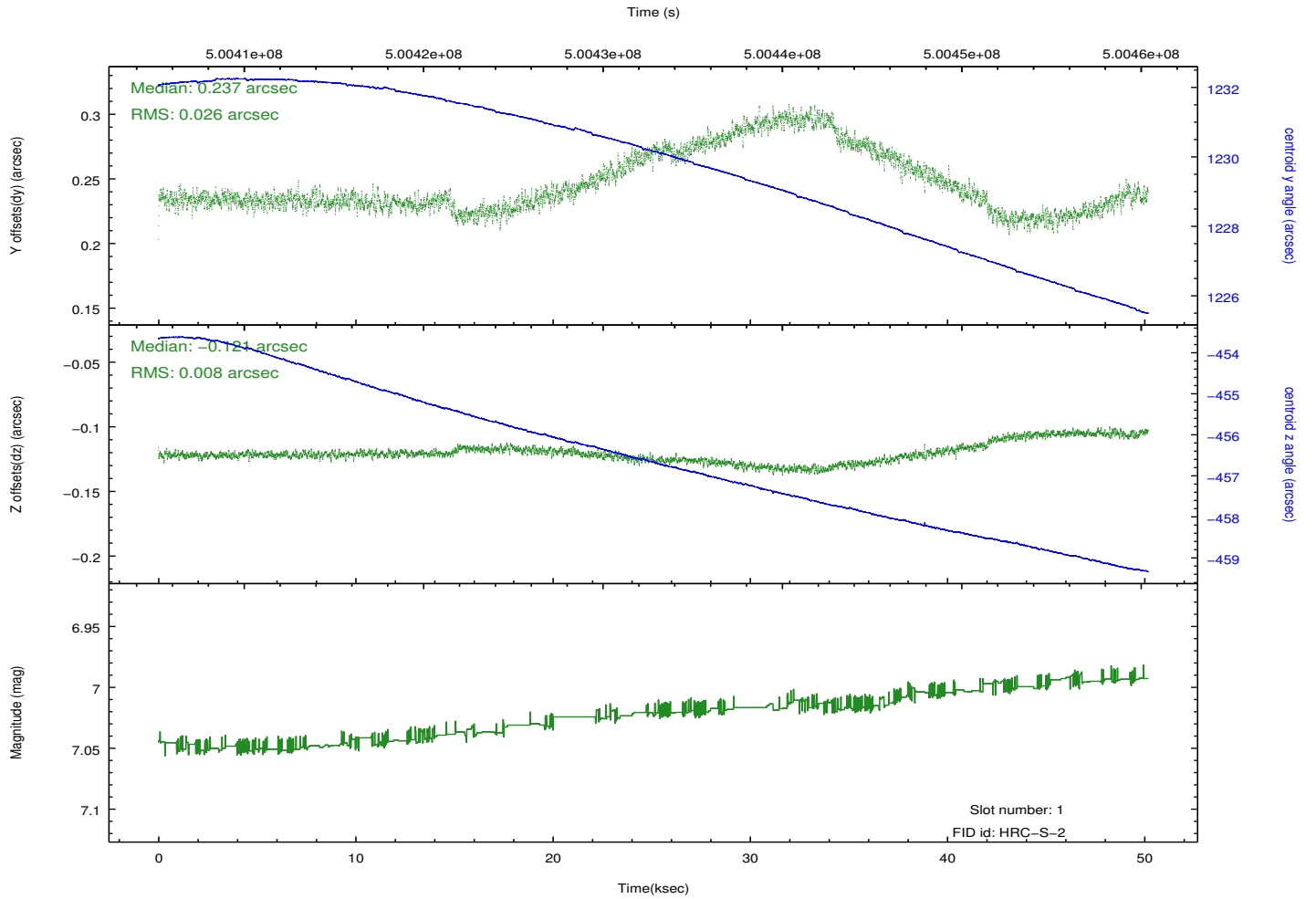
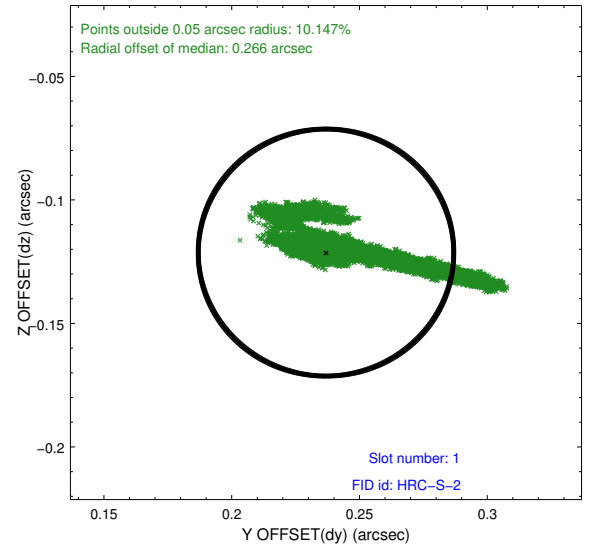
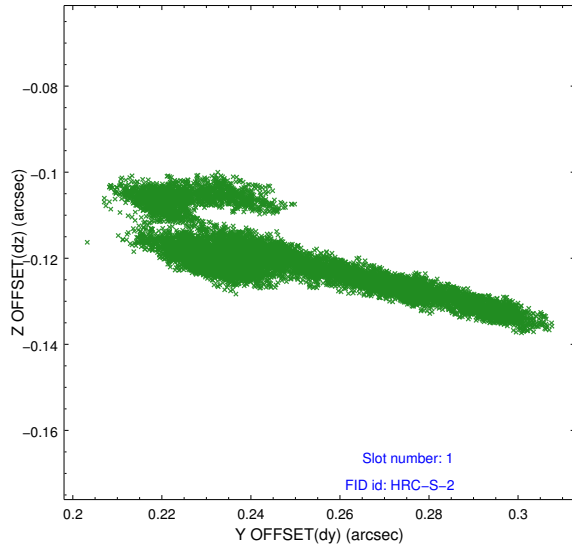


## 2.5 FID Slots

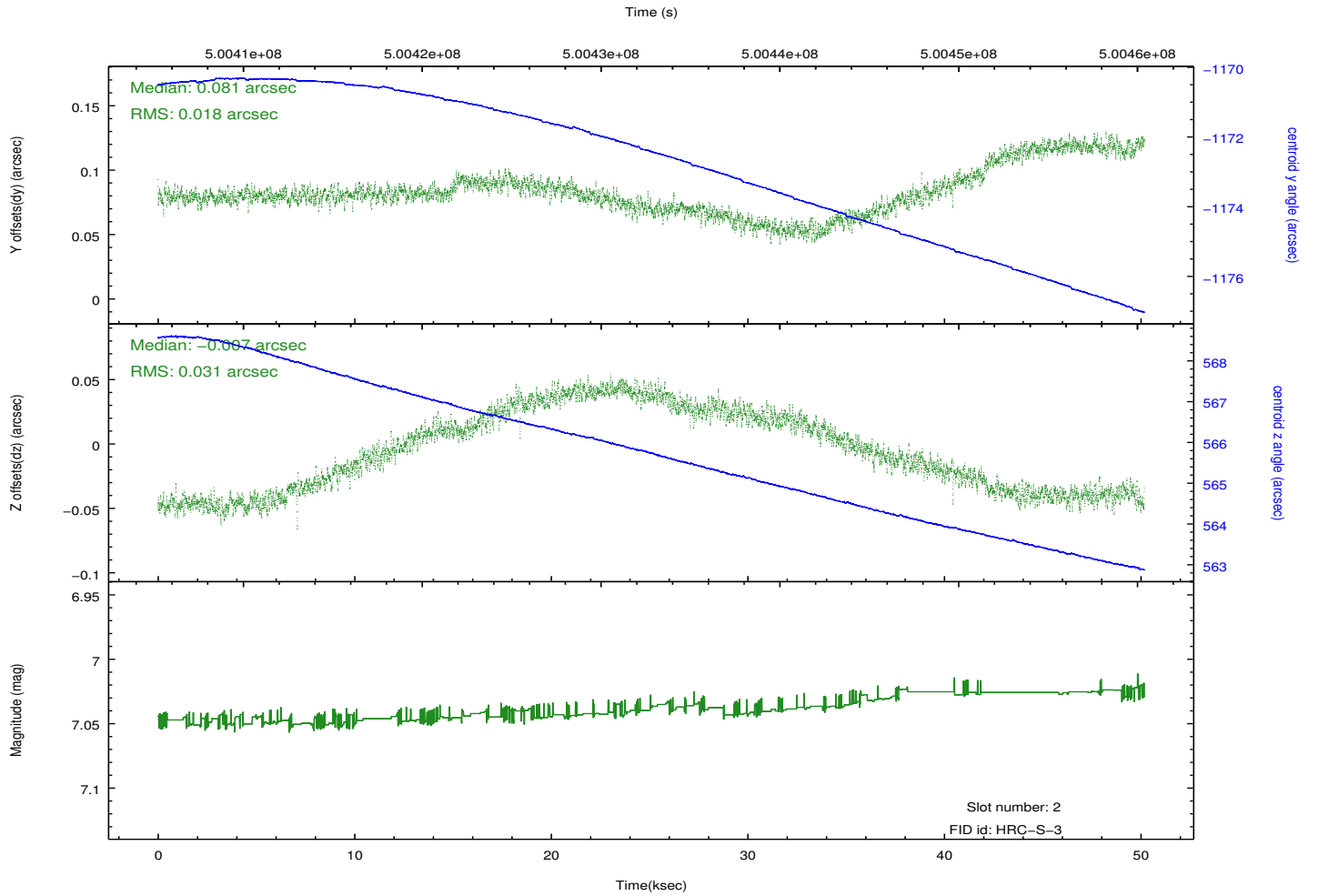
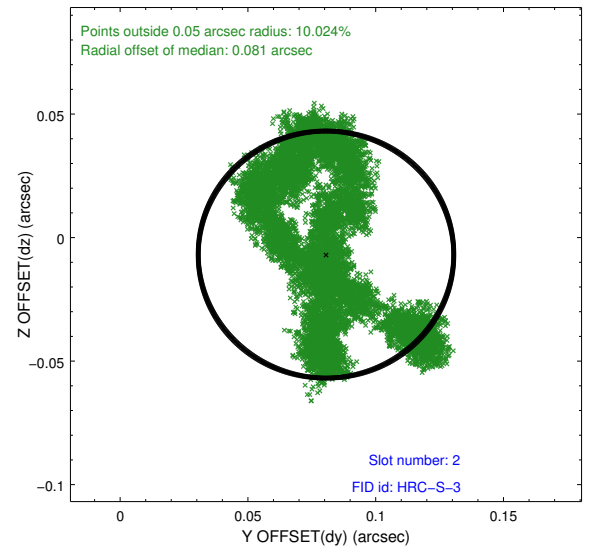
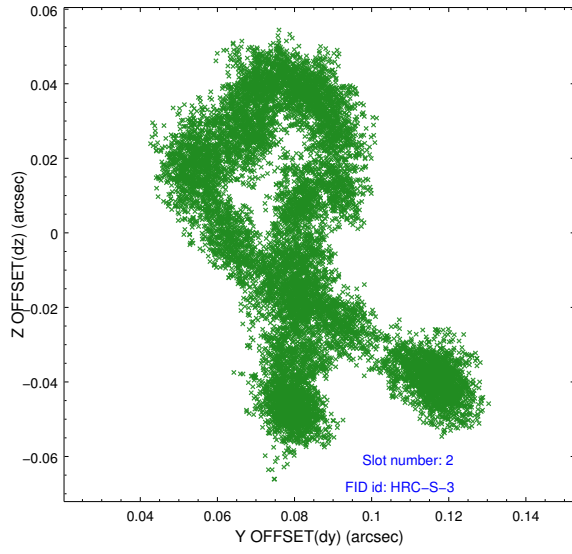
### 2.5.1 Slot 0



## 2.5.2 Slot 1

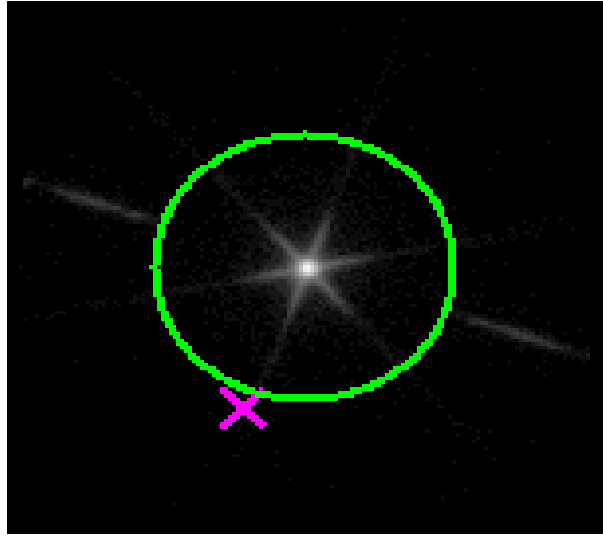


### 2.5.3 Slot 2

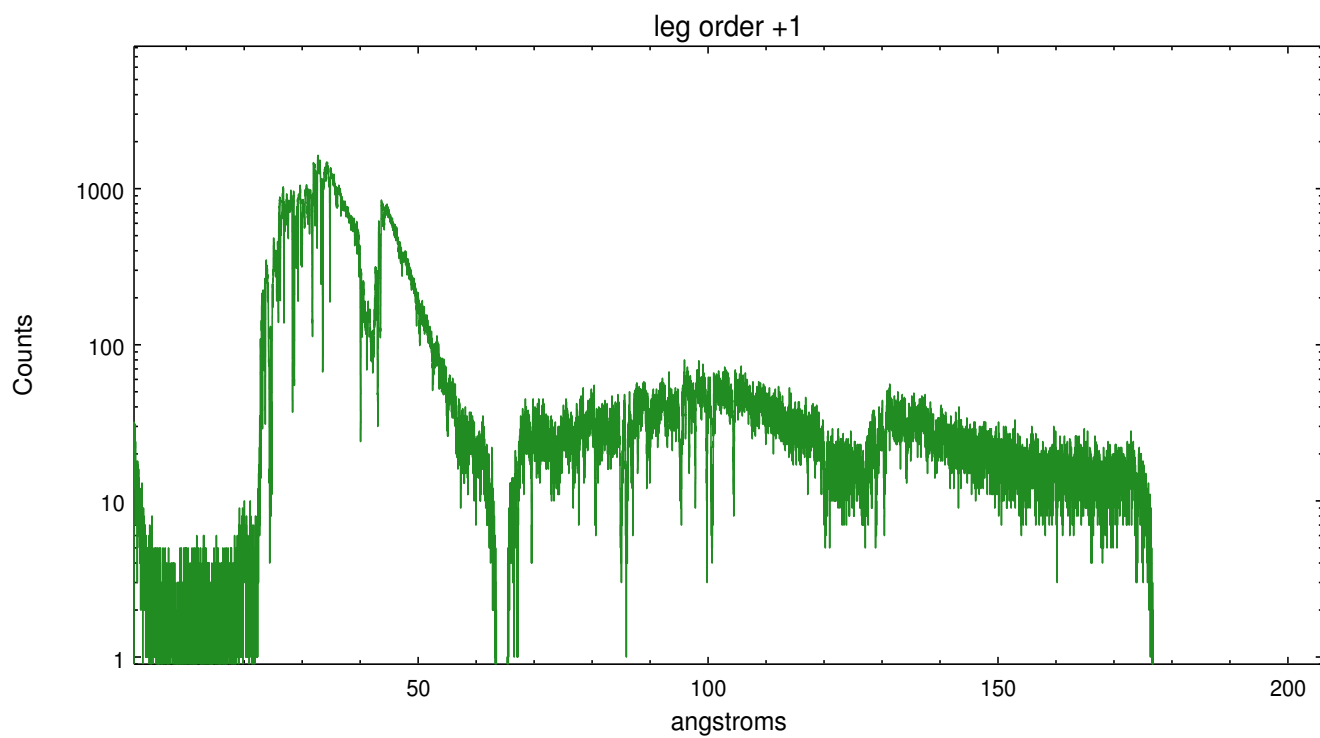
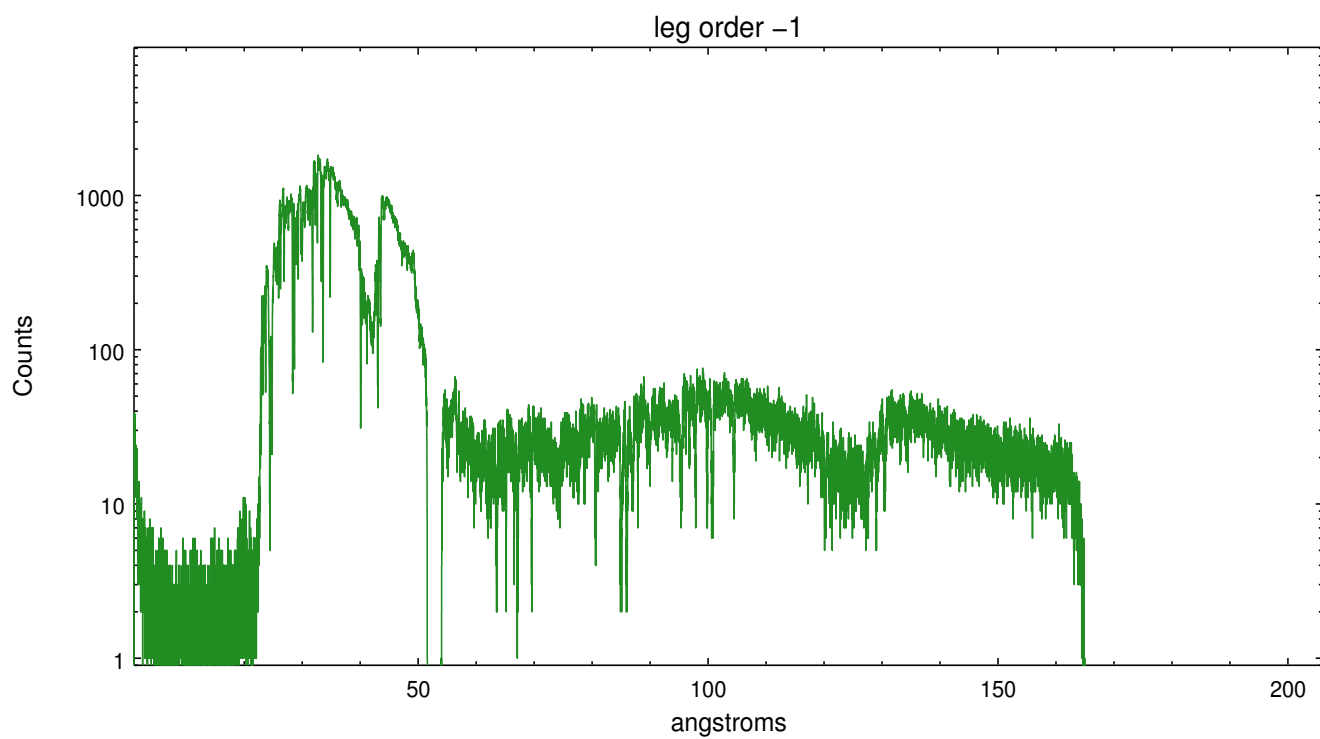


## 3 Gratings

### 3.1 LETG Arm



LETG Zero Order





## A Summary

### A.1 Status

V&V Scientist	Joy Nichols
V&V Date (YYYY-MM-DD)	2013.11.12
V&V Edition	1
V&V Disposition and Status	OK
V&V Charge Time	50.183234000325

### A.2 Comments