

V&V Reference Report

L2 ASCDS Version : 7.6.9

Observation 1552 - L2 Version 001
Chandra X-Ray Center

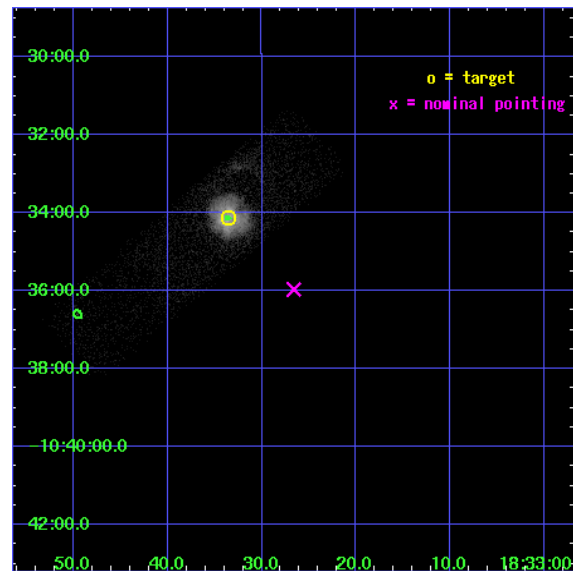
L2 Processing Date : Dec 14 2006

Contents

1	Front	2
2	OBI	3
2.1	OBI	3
2.1.1	Images	3
2.1.2	Bias	3
2.1.3	Parameters	4
2.1.4	Events	4
2.2	Compared Parameters	5
2.3	Aspect	6
2.4	Star Slots	9
2.4.1	Slot 3	9
2.4.2	Slot 4	10
2.4.3	Slot 5	11
2.4.4	Slot 6	12
2.4.5	Slot 7	13
2.5	FID Slots	14
2.5.1	Slot 0	14
2.5.2	Slot 1	15
2.5.3	Slot 2	16
3	Point Sources	17
A	Summary	18
A.1	Status	18
A.2	Comments	18

1 Front

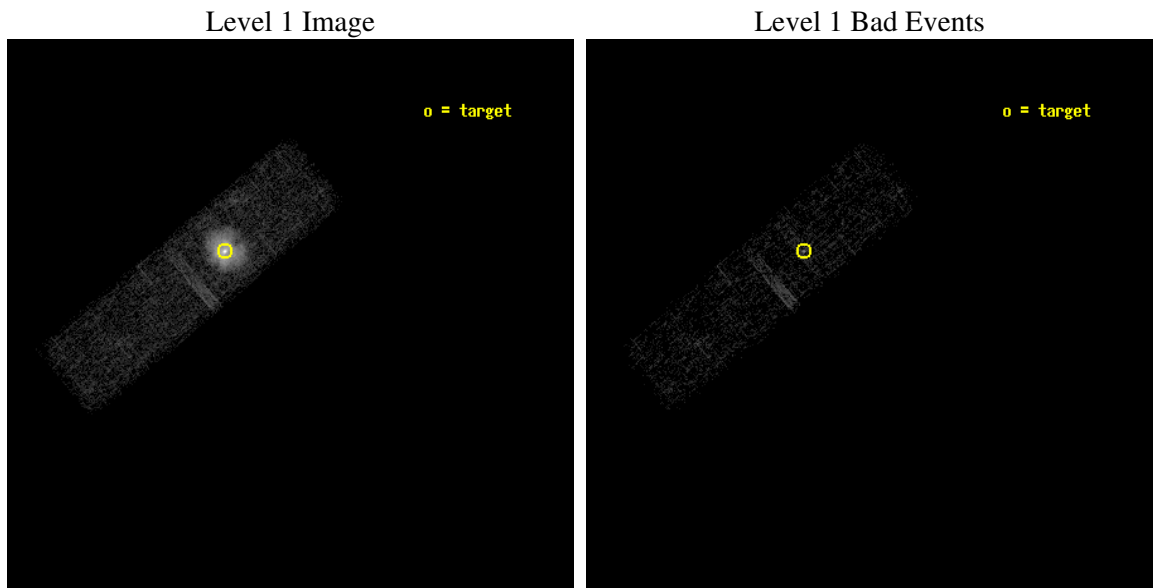
seq_num	590161
obs_id	1552
title	CALIBRATION OBSERVATIONS OF THE STANDARD CANDLE G21.5-09
observer	Dr. CXC Calibration
object	G21.5-0.9[Chip I3, T=120, Offsets=-2.25,0,3.5]
dtcycle	0
cycle	P
ra_targ	278.389583
dec_targ	-10.568528
ra_nom	278.3608850383
dec_nom	-10.599435573085
roll_nom	230.28604054946
revision	2
ontime	10440.758951008
livetime	9931.2840778164
ontime3	10440.758951008
l2events	29821



2 OBI

2.1 OBI

2.1.1 Images



2.1.2 Bias

Chip 3



2.1.3 Parameters

obi_num	0
ascdsver	7.6.9
caldbver	3.2.4
date	2006-12-14T08:48:57
revision	2

sched_exp_time	10000.000000
ontime	10824.05113335
ontime3	10824.05113335
l1events	55069

2.1.4 Events

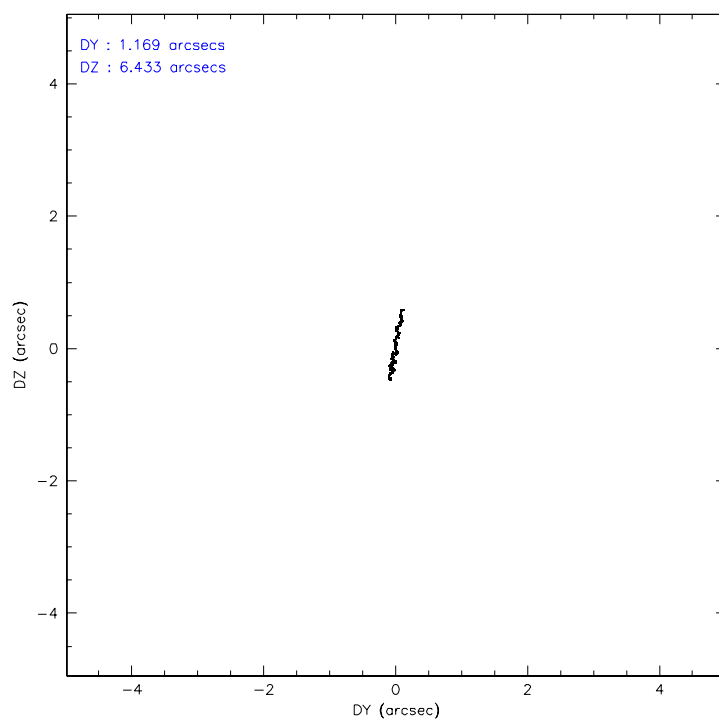
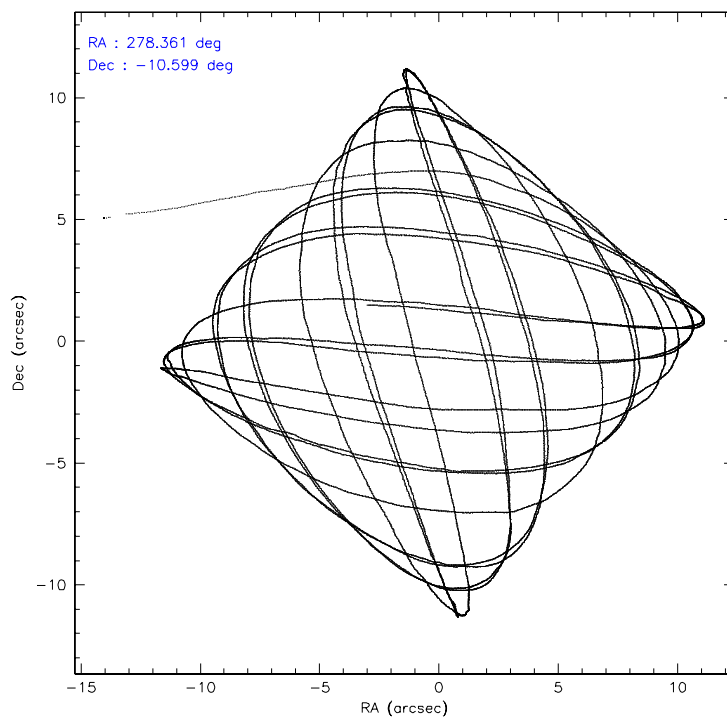
	ccd 3
level 1 events	55069
rejected events	23005
rejected %	41%

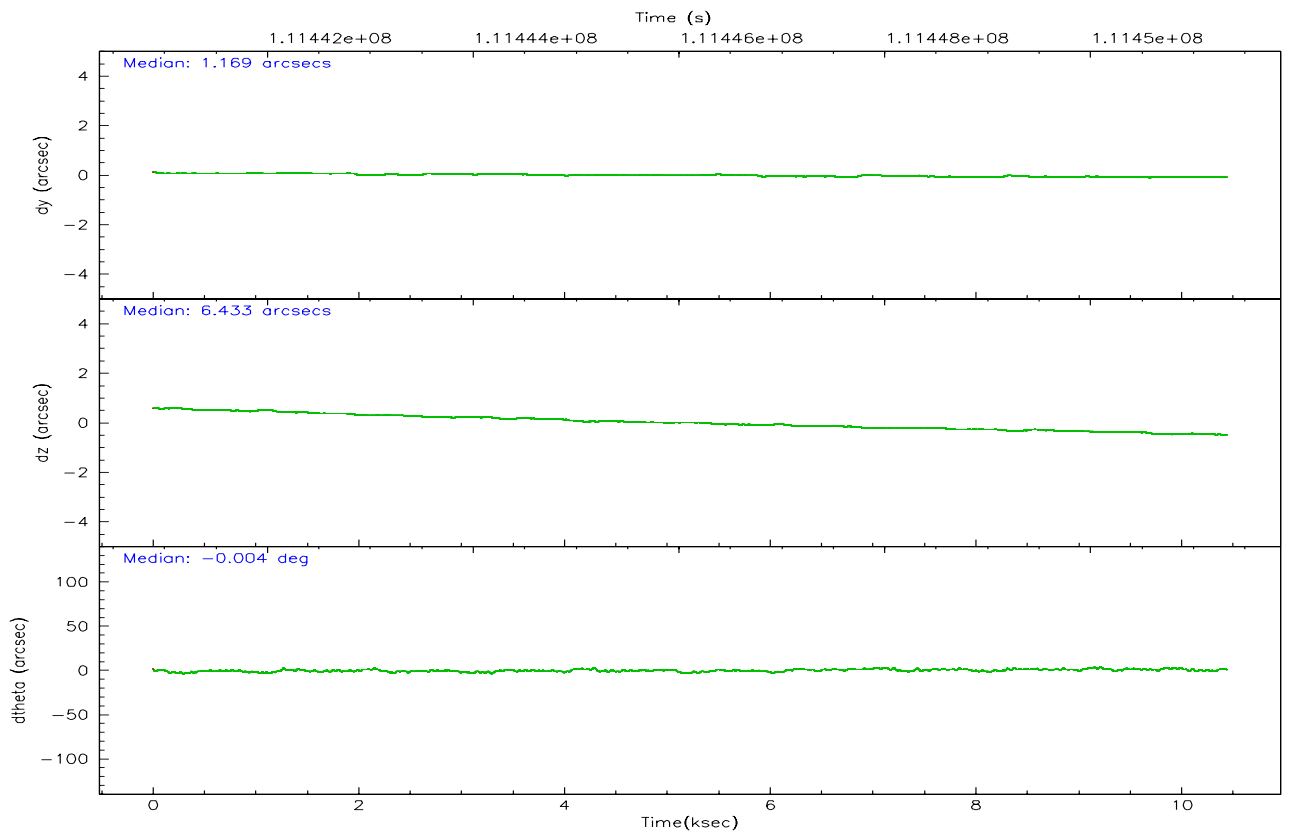
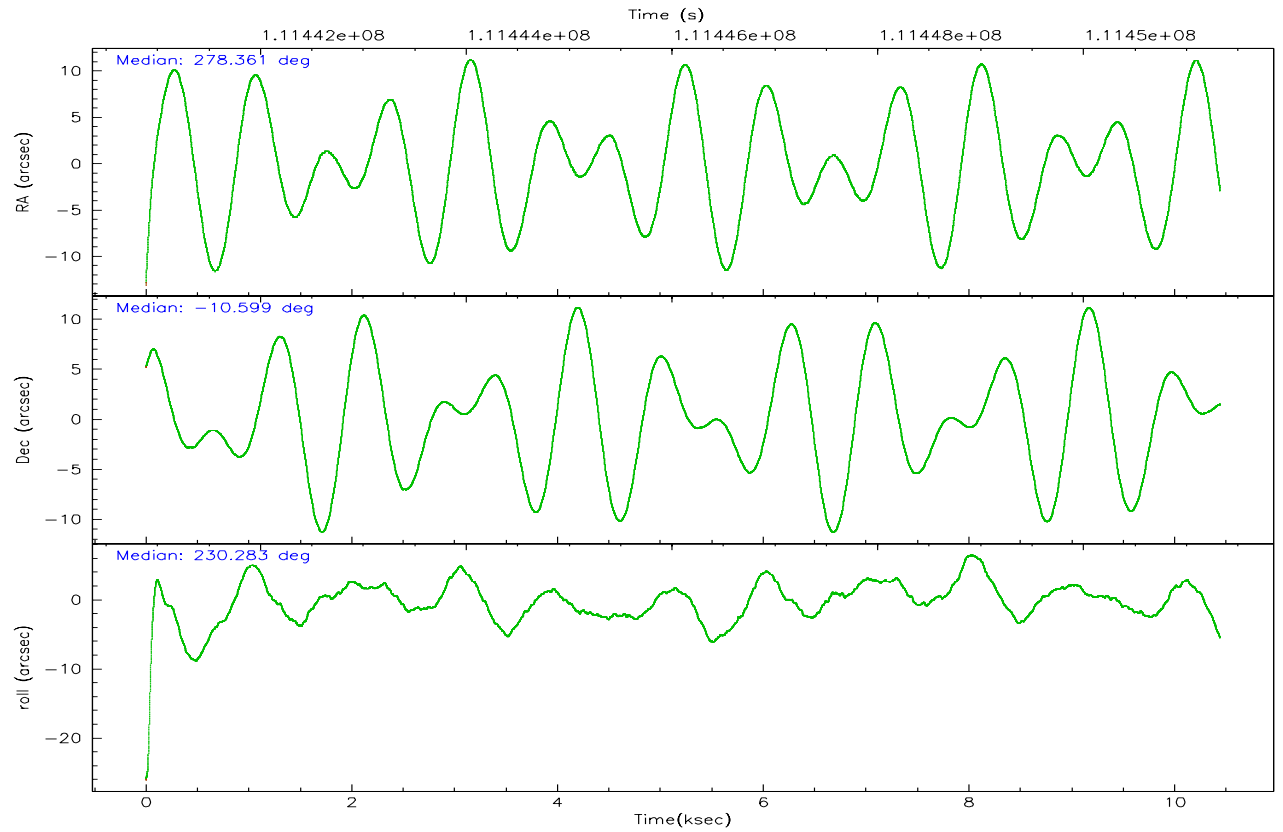
	ccd 3
grade 0 events	23386
	42%
grade 1 events	92
	0%
grade 2 events	4174
	7%
grade 3 events	1669
	3%
grade 4 events	1618
	2%
grade 5 events	805
	1%
grade 6 events	1738
	3%
grade 7 events	21587
	39%

2.2 Compared Parameters

Parameter	Planned	Actual	Parameter	Planned	Actual
Instrument	ACIS	ACIS	Obspar format version number	6	6
Detector	ACIS-3	ACIS-3	Obspar file type	PREDICTED	ACTUAL
Grating	NONE	NONE	Obspar update status	NONE	UPDATED
Data mode	VFAINT	VFAINT	Number of optional ACIS chips dropped	0	0
Observation mode	POINTING	POINTING	On-chip summing requested	N	N
Pointing RA	278.365499	278.3608850382993	Subarray requested	CUSTOM	1/4
Pointing Dec	-10.572413	-10.59943557308453	Subarray start row	555	555
Pointing Roll	230.078227	230.2860405494556	Subarray row count	256	256
Window start time	110332864.184000	110332864.184000	Alternating exposures requested	N	N
Window stop time	112838464.184000	112838464.184000	Primary exposure time	0.000000	0.8
SIM focus pos (mm)	-0.782348	-0.7809083437167272			
SIM defocus (mm)	0	0.001439871863259334			
SIM translation stage pos (mm)	-226.272463	-226.2682626179875			
SIM translation stage offset (mm)	-7.32	-7.32419038494217			
Observation start time	111441331.184000	111440247.13747			
Observation start date	2001-07-13T19:54:27	2001-07-13T19:37:27			
Observation end time	111451331.184000	111451527.77542			
Observation end date	2001-07-13T22:41:07	2001-07-13T22:45:27			
Read mode	TIMED	TIMED			

2.3 Aspect



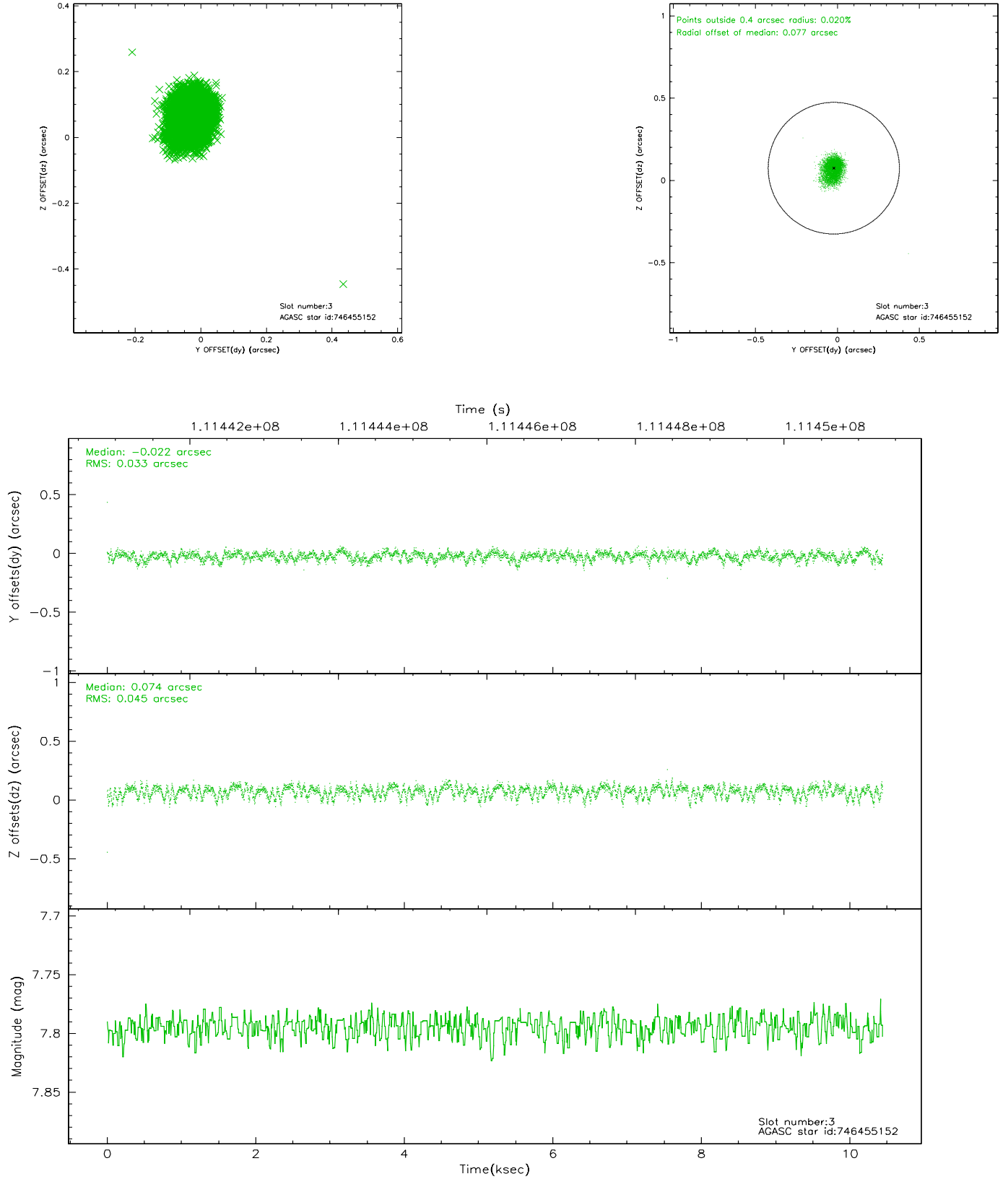


Slot Statistics

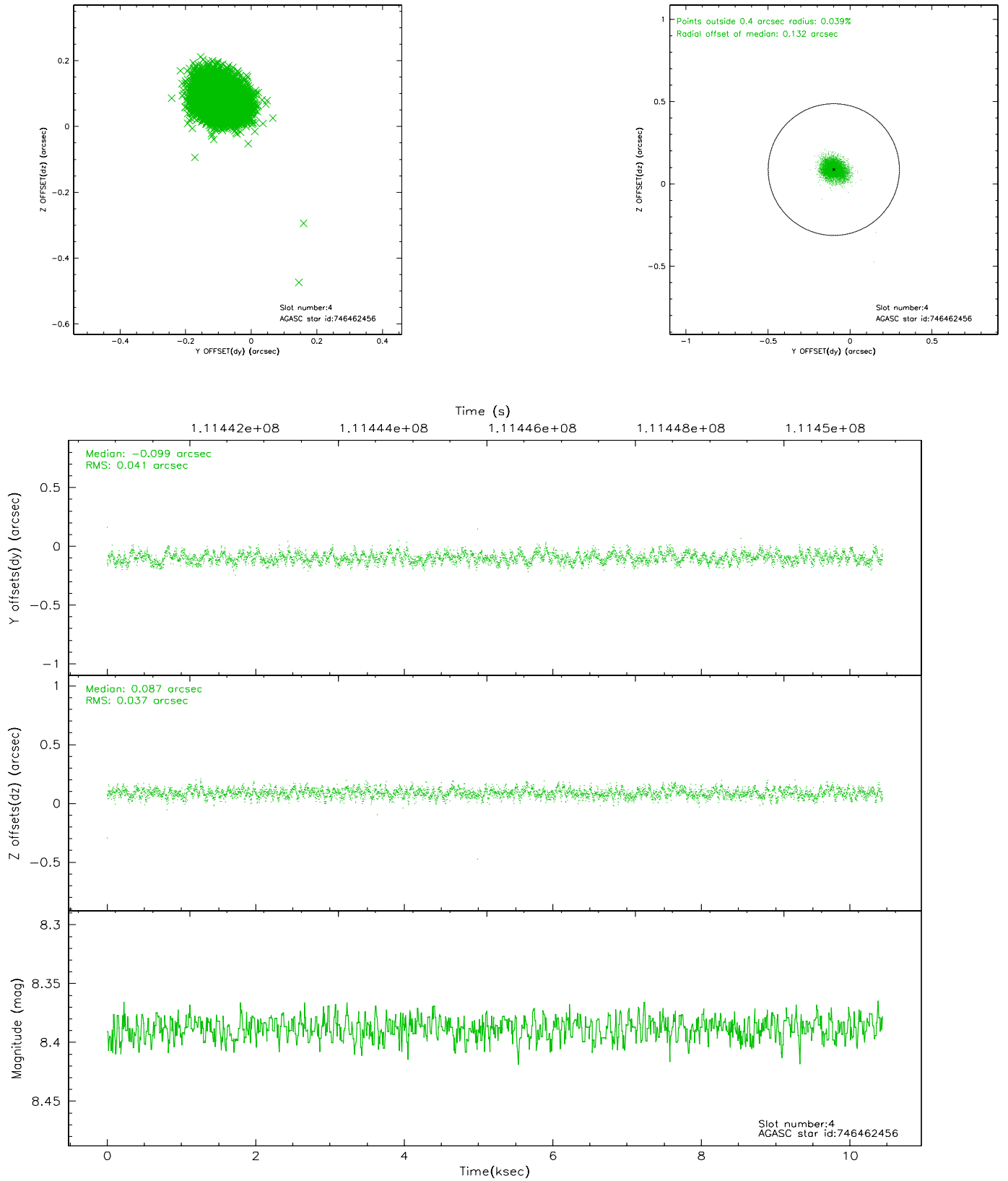
slot	status	id	mag	n_pts	med_dy	med_dz	dr1	dr2	ra	dec	mean_y	mean_z
0	FID	ACIS-I-2	7.17	2548	-0.032	-0.026	0.020	0.038	0.000000	0.000000	-756.02	-985.61
1	FID	ACIS-I-4	7.15	2547	-0.055	0.034	0.009	0.015	0.000000	0.000000	2157.71	920.33
2	FID	ACIS-I-5	7.21	2548	-0.013	0.061	0.021	0.035	0.000000	0.000000	-1808.85	917.76
3	GUIDE	746455152	7.79	5093	-0.022	0.074	0.057	0.096	278.447893	-9.976732	-1831.35	-1151.30
4	GUIDE	746462456	8.39	5094	-0.099	0.087	0.059	0.093	278.652171	-10.530173	-767.06	681.72
5	GUIDE	746455112	8.93	5094	0.267	-0.147	0.066	0.109	278.266531	-10.703234	586.63	34.71
6	GUIDE	746460272	8.91	5095	-0.037	-0.075	0.066	0.111	278.847488	-10.152127	-2254.71	340.47
7	GUIDE	746461728	9.77	5089	-0.109	0.066	0.117	0.195	278.986921	-10.530755	-1524.76	1592.91

2.4 Star Slots

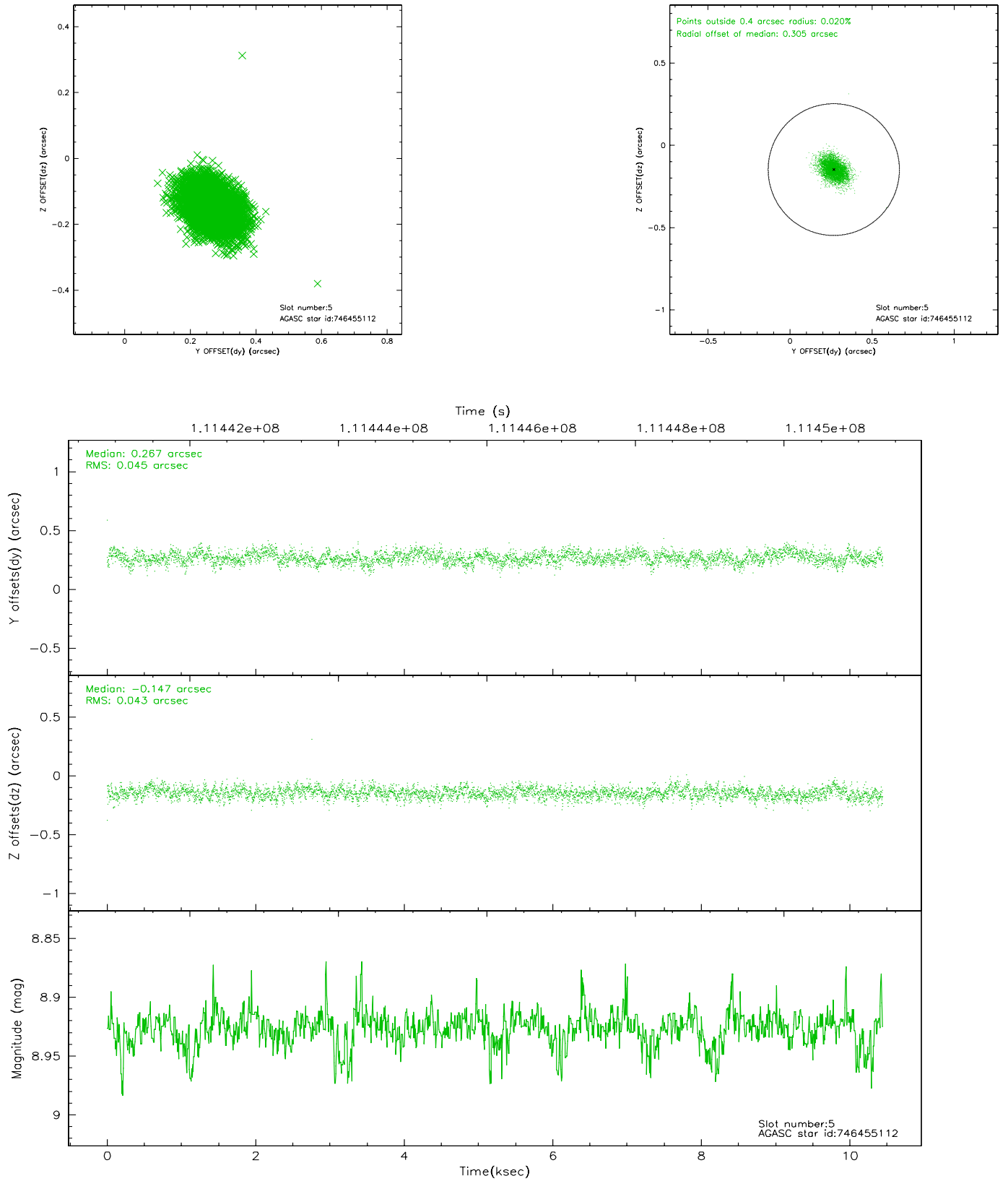
2.4.1 Slot 3



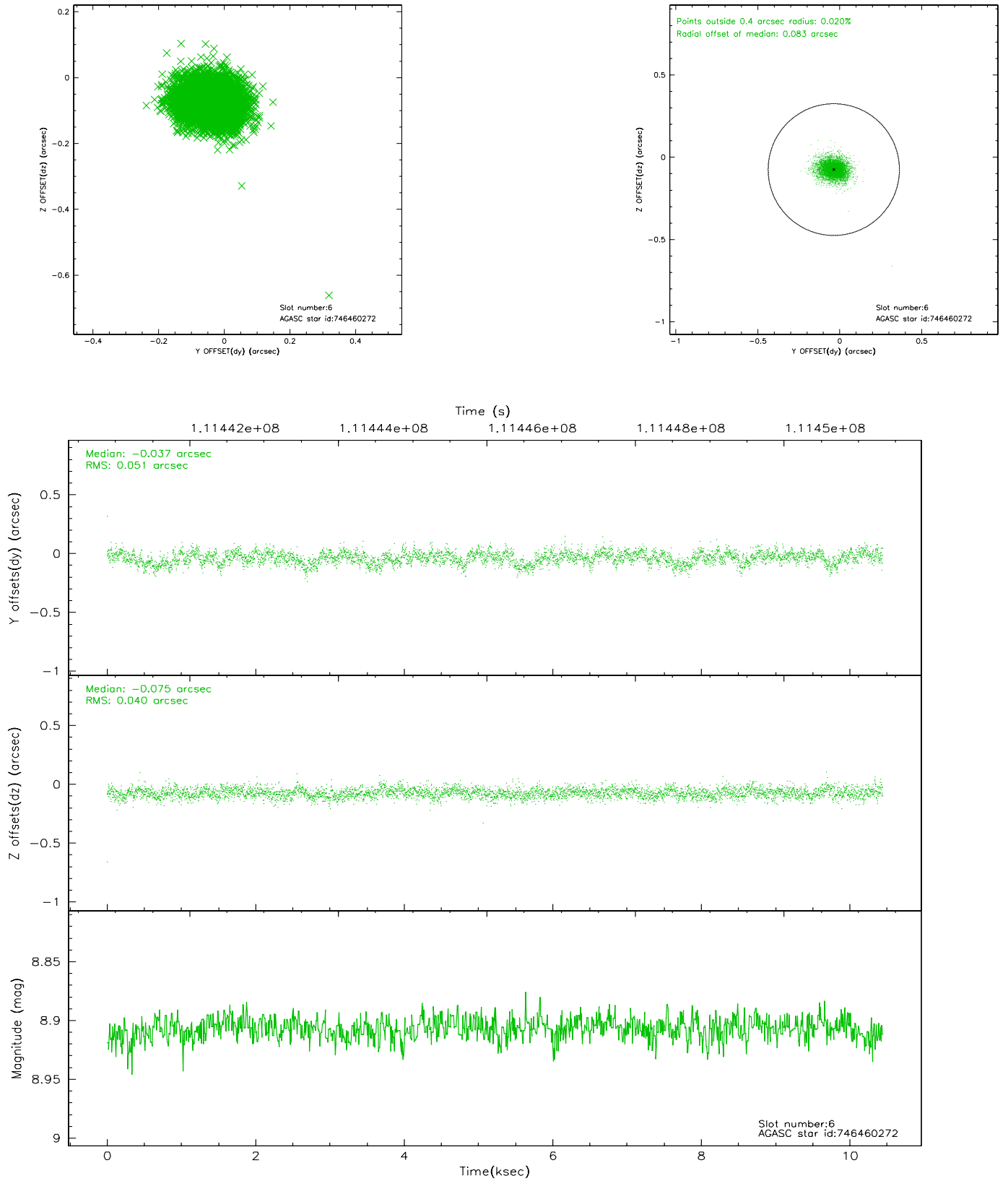
2.4.2 Slot 4



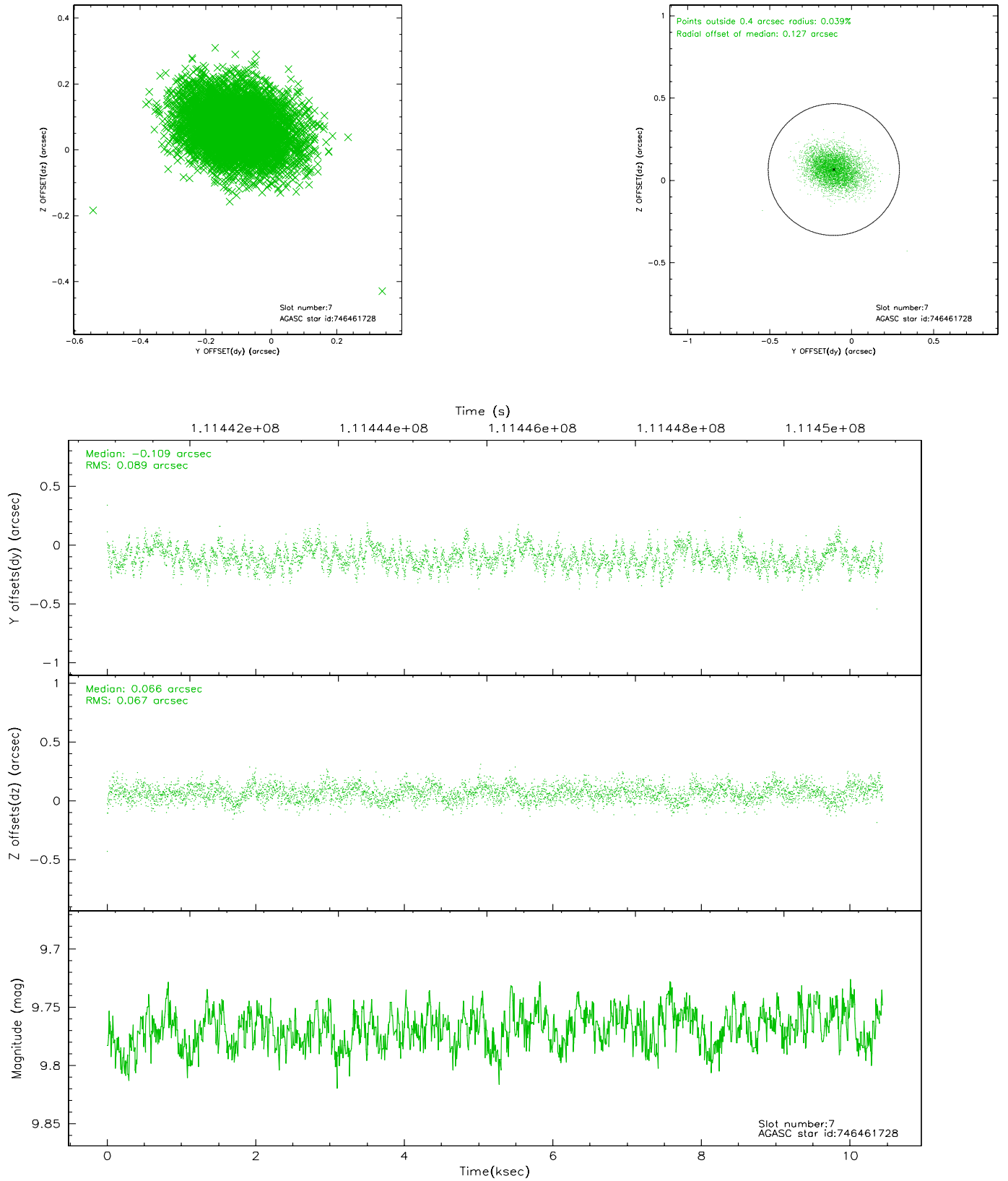
2.4.3 Slot 5



2.4.4 Slot 6

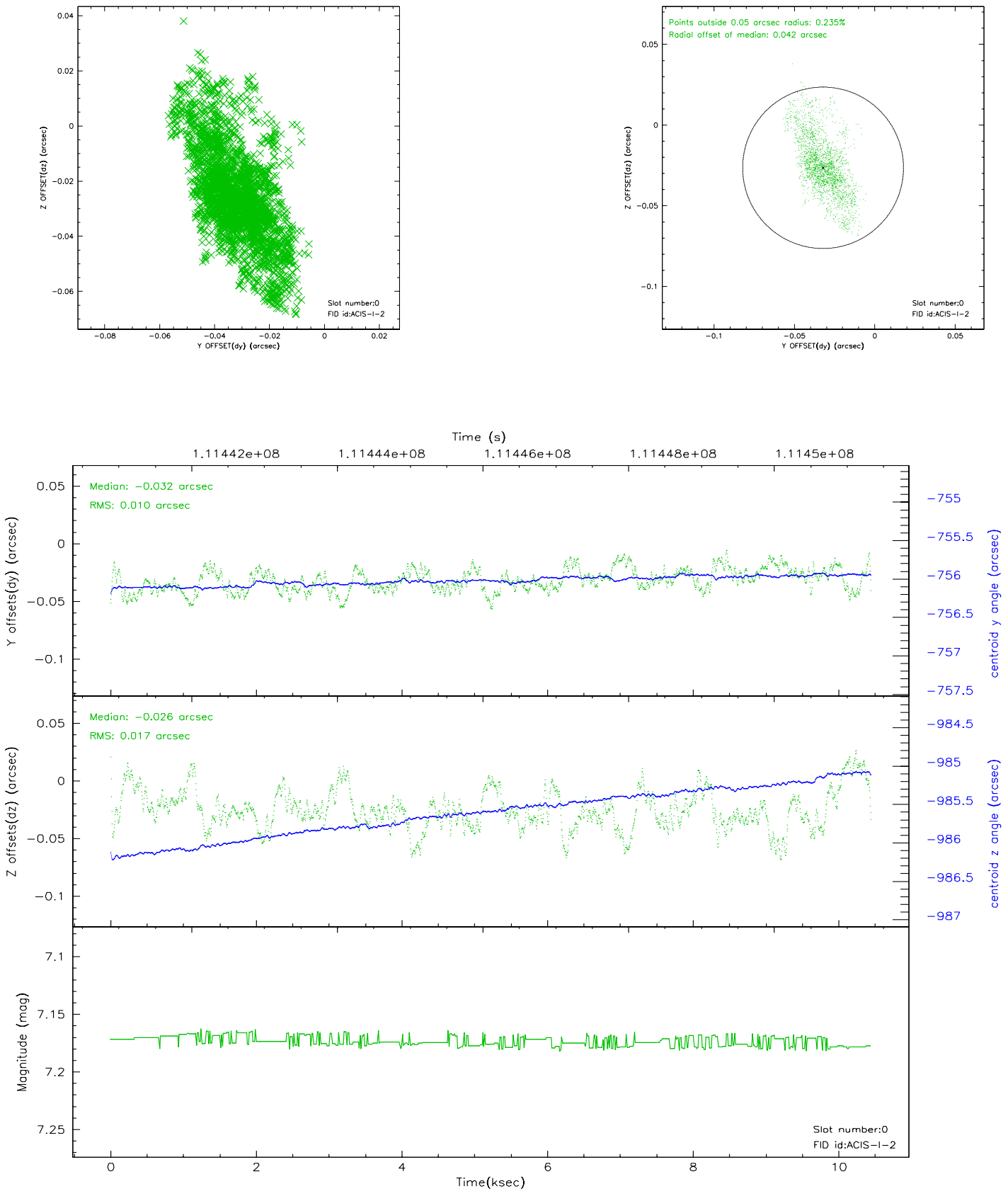


2.4.5 Slot 7

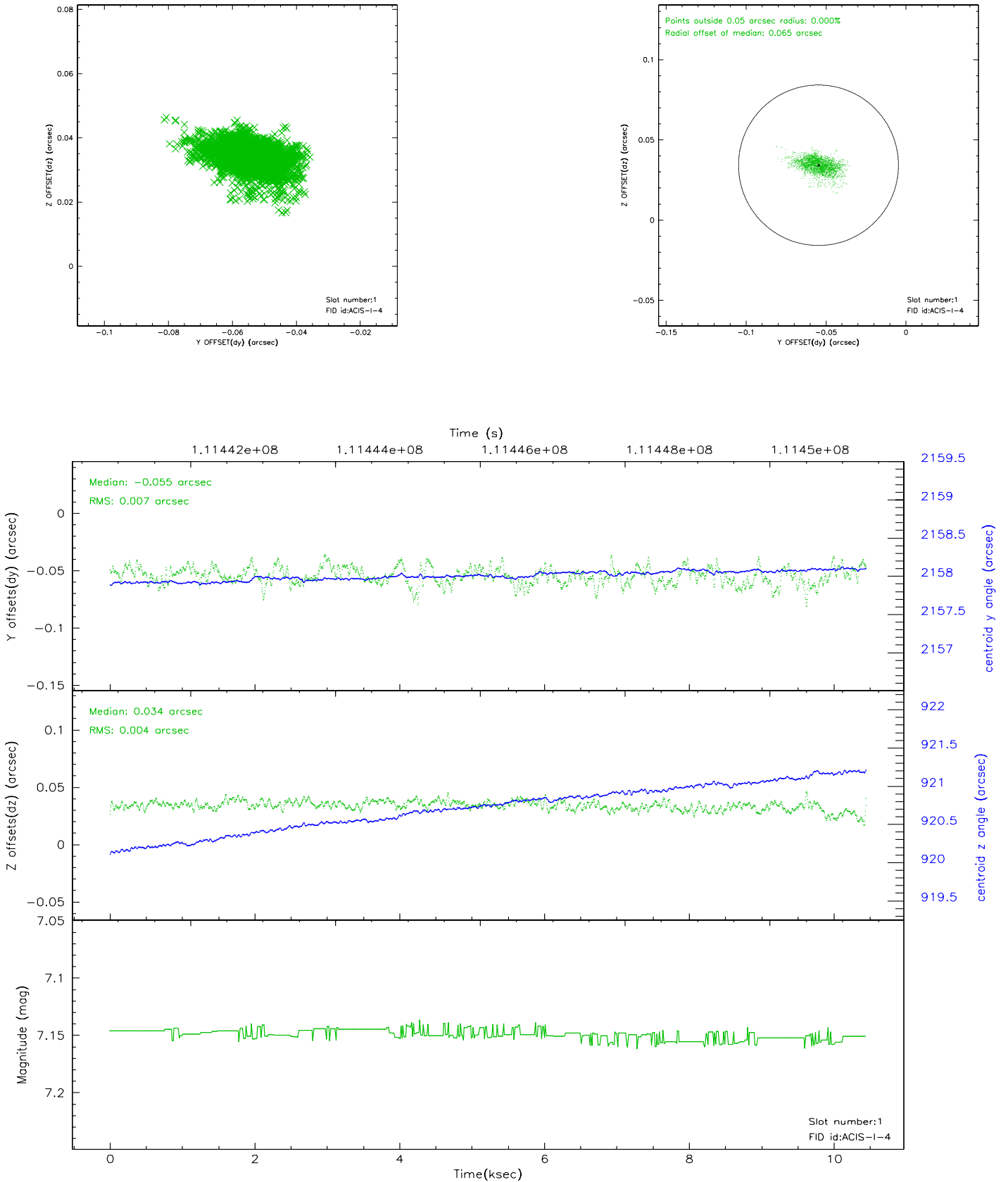


2.5 FID Slots

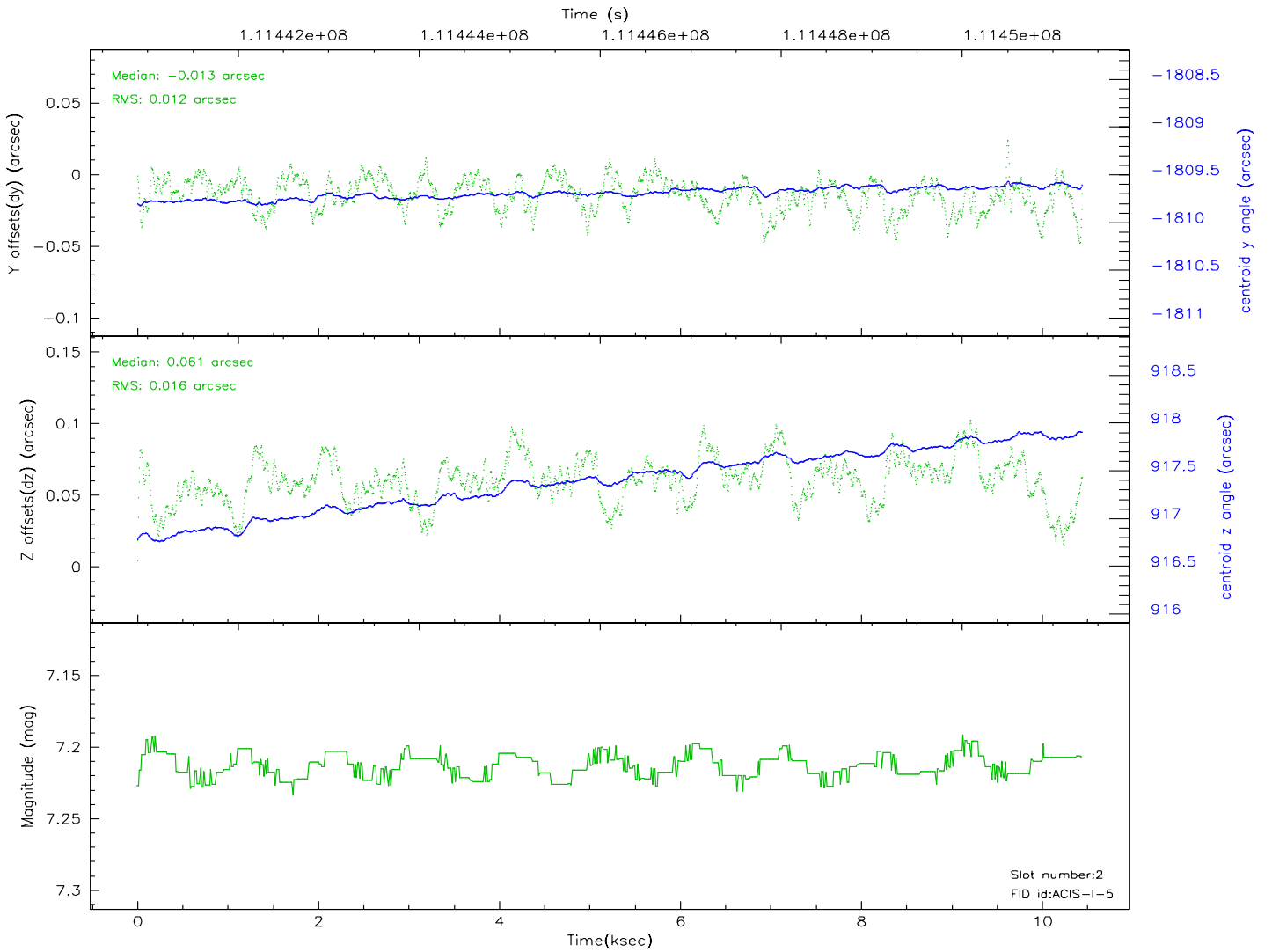
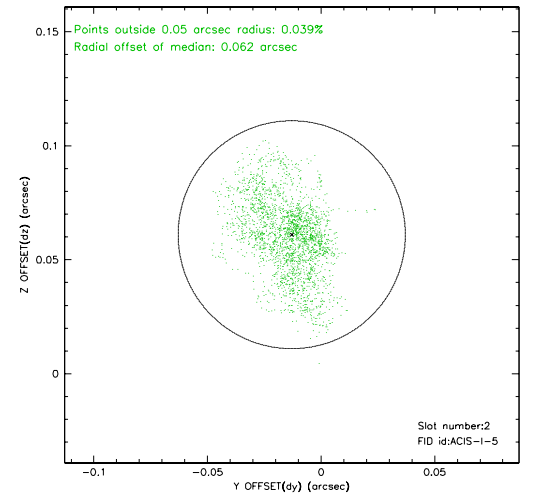
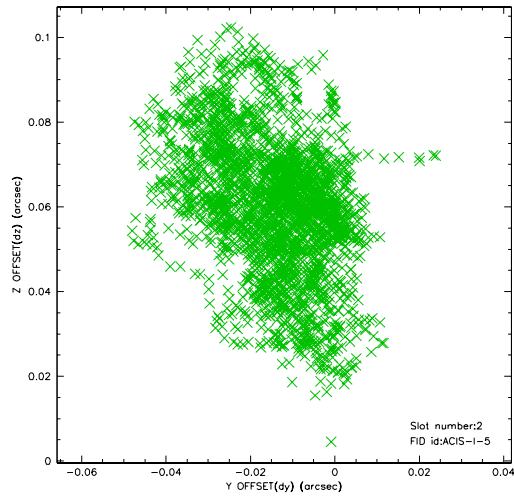
2.5.1 Slot 0



2.5.2 Slot 1



2.5.3 Slot 2



3 Point Sources

A Summary

A.1 Status

V&V Scientist	Jen Lauer
V&V Date (YYYY-MM-DD)	2006.12.14
V&V Edition	1
V&V Disposition and Status	OK
V&V Charge Time	10.44

A.2 Comments

Window constraint met.