

V&V Reference Report

L2 ASCDS Version : 8.5.1.1

Observation 15202 - L2 Version 2
Chandra X-Ray Center

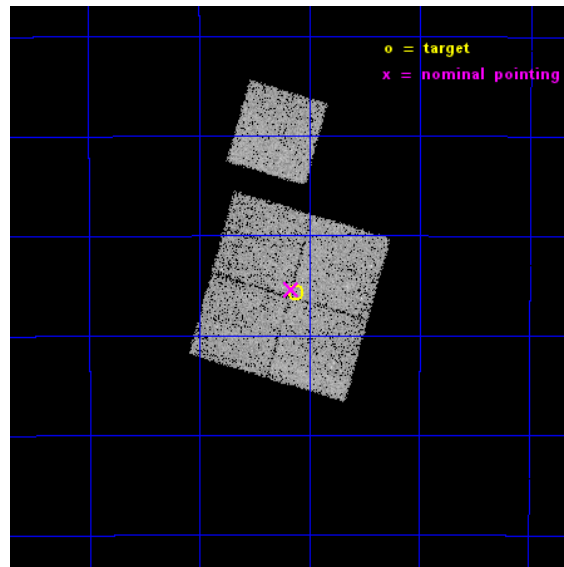
L2 Processing Date : Dec 2 2014

Contents

1	Front	2
2	OBI	3
2.1	OBI	3
2.1.1	Images	3
2.1.2	Bias	3
2.1.3	Parameters	4
2.1.4	Events	4
2.2	Compared Parameters	5
2.3	Aspect	6
2.4	Star Slots	9
2.4.1	Slot 3	9
2.4.2	Slot 4	10
2.4.3	Slot 5	11
2.4.4	Slot 6	12
2.4.5	Slot 7	13
2.5	FID Slots	14
2.5.1	Slot 0	14
2.5.2	Slot 1	15
2.5.3	Slot 2	16
A	Summary	17
A.1	Status	17
A.2	Comments	17

1 Front

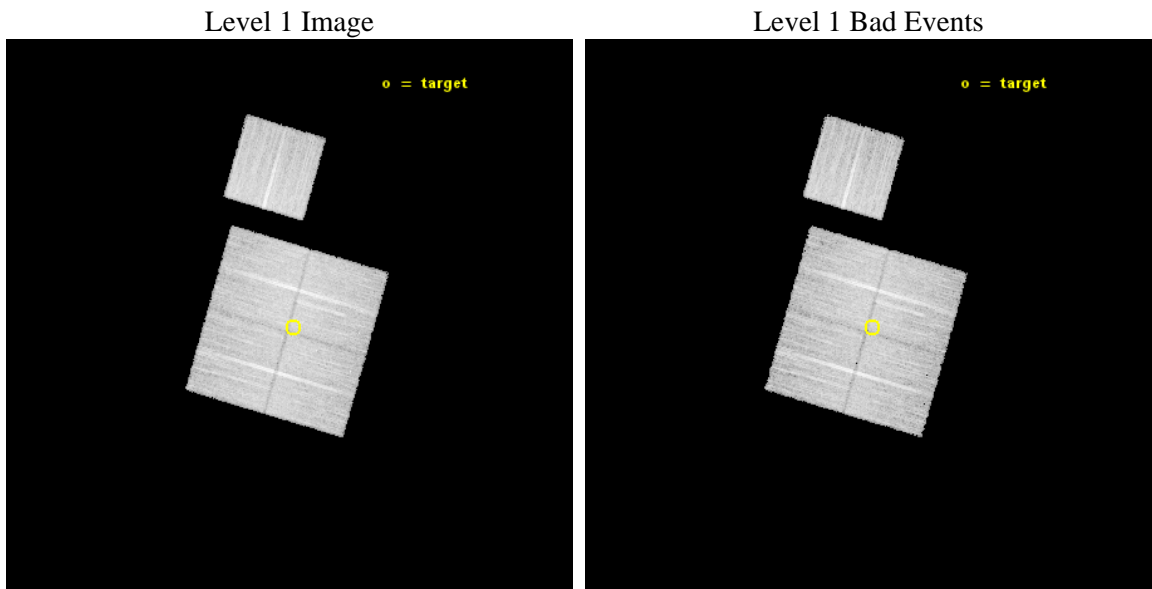
seq_num	901032	Sequence number
obs_id	15202	Observation id
title	Studying Giant Filamentary Lobes of Centaurus A	Proposal title
observer	Dr. Yasuyuki Tanaka	Principal investigator
object	Cen A Northern Lobe 2	Source name
dtcycle	0	
cycle	P	events from which exps? Prim/Second/Both
ra_targ	201.782	Observer's specified target RA [deg]
dec_targ	-39.761	Observer's specified target Dec [deg]
ra_nom	201.7907556776	Nominal RA [deg]
dec_nom	-39.756544324264	Nominal Dec [deg]
roll_nom	16.214281163443	Nominal Roll [deg]
revision	2	Processing version of data
ontime	19483.495642066	Sum of GTIs [s]
livetime	19228.929427962	Livetime [s]
ontime0	19483.372522056	Sum of GTIs [s]
ontime1	19483.413562059	Sum of GTIs [s]
ontime2	19483.454602063	Sum of GTIs [s]
ontime3	19483.495642066	Sum of GTIs [s]
ontime6	19480.1904217	Sum of GTIs [s]
l2events	53560	Number of level 2 events



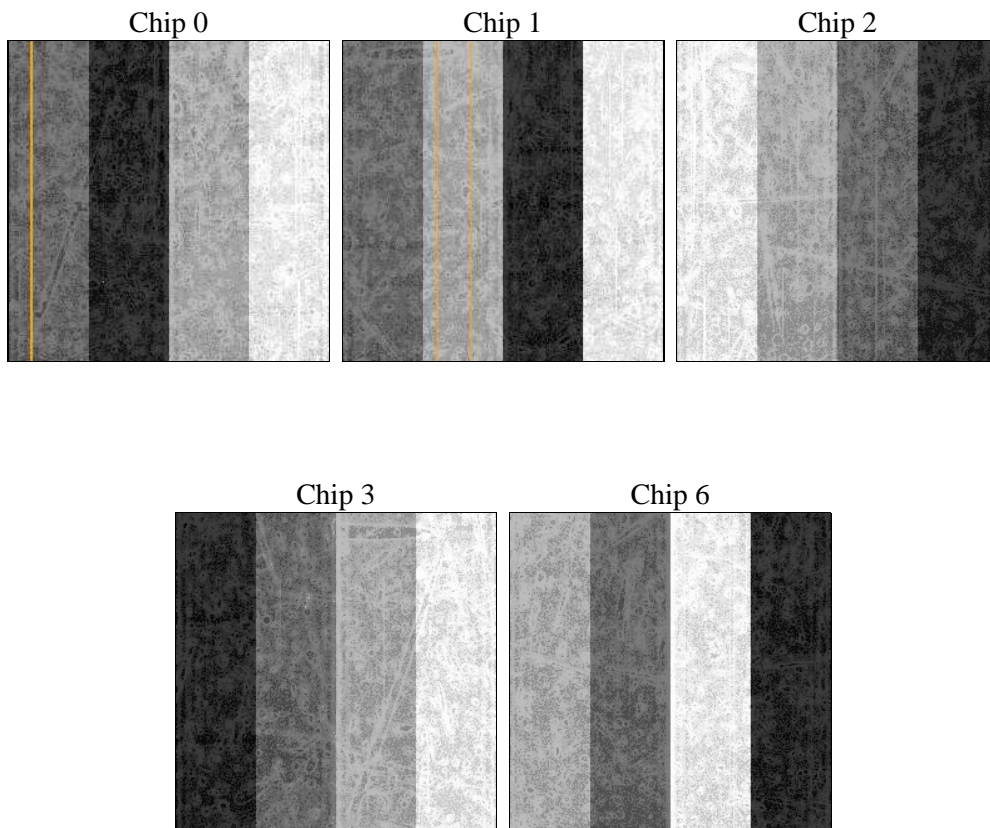
2 OBI

2.1 OBI

2.1.1 Images



2.1.2 Bias



2.1.3 Parameters

obi_num	0	Obi number	sched_exp_time	19704.029000	[s] Scheduled observation exposure time
ascdsver	10.3	Processing system revision	ontime	19483.495642066	Sum of GTIs [s]
caldsver	4.6.4	 	ontime0	19483.372522056	Sum of GTIs [s]
date	2014-12-02T16:32:51	Date and time of file creation	ontime1	19483.413562059	Sum of GTIs [s]
revision	2	Processing version of data	ontime2	19483.454602063	Sum of GTIs [s]
			ontime3	19483.495642066	Sum of GTIs [s]
			ontime6	19480.1904217	Sum of GTIs [s]
			l1events	517638	Number of level 1 events

2.1.4 Events

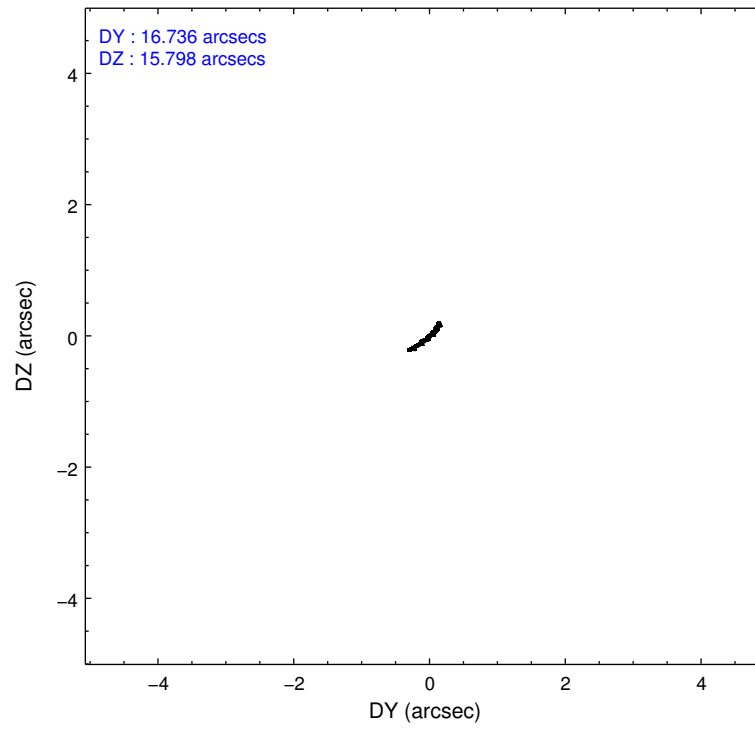
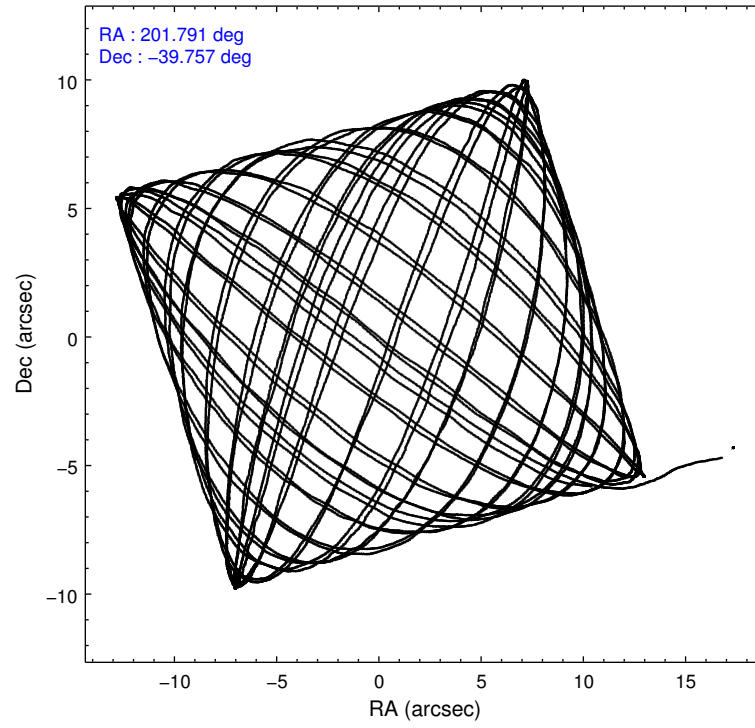
	ccd 0	ccd 1	ccd 2	ccd 3	ccd 6
level 1 events	97950	98899	106758	104423	109608
rejected events	85848	85195	94867	92275	96595
rejected %	87%	86%	88%	88%	88%

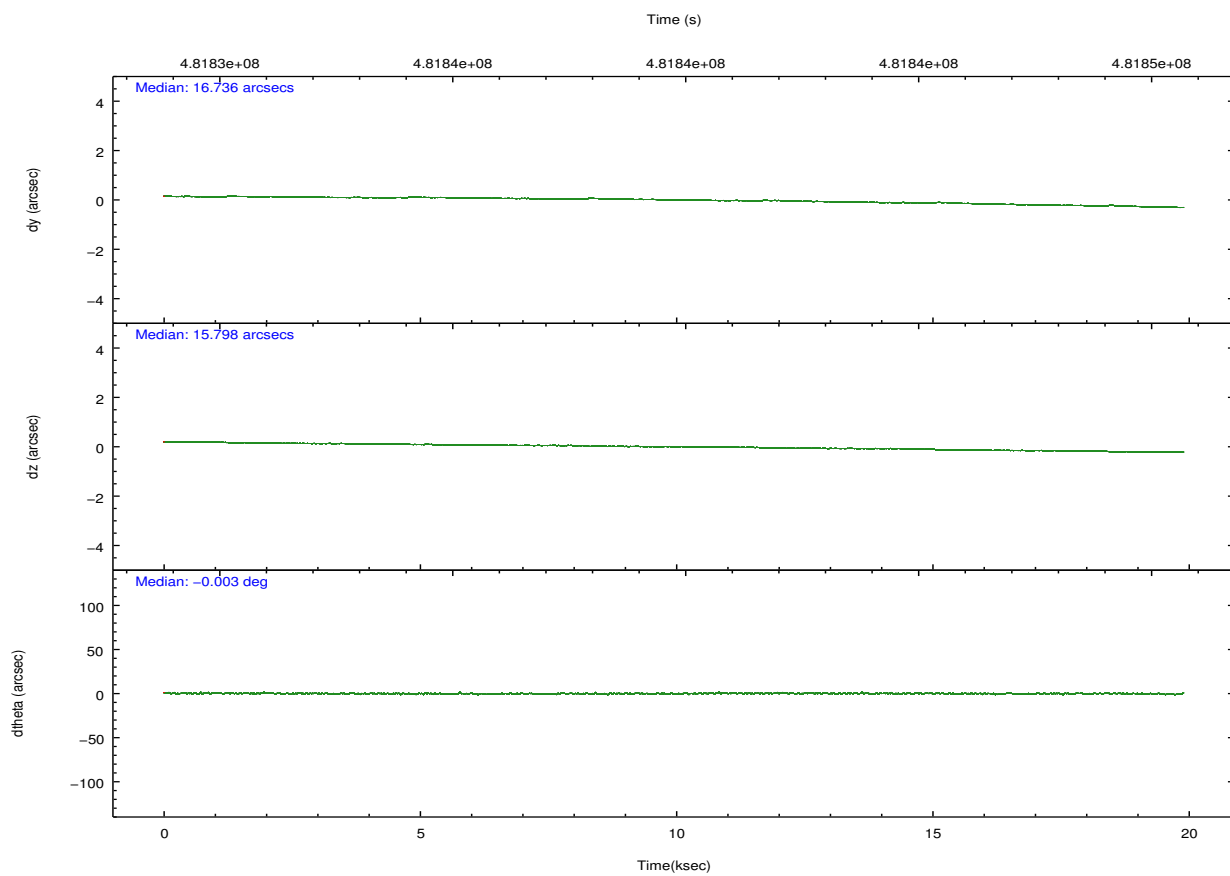
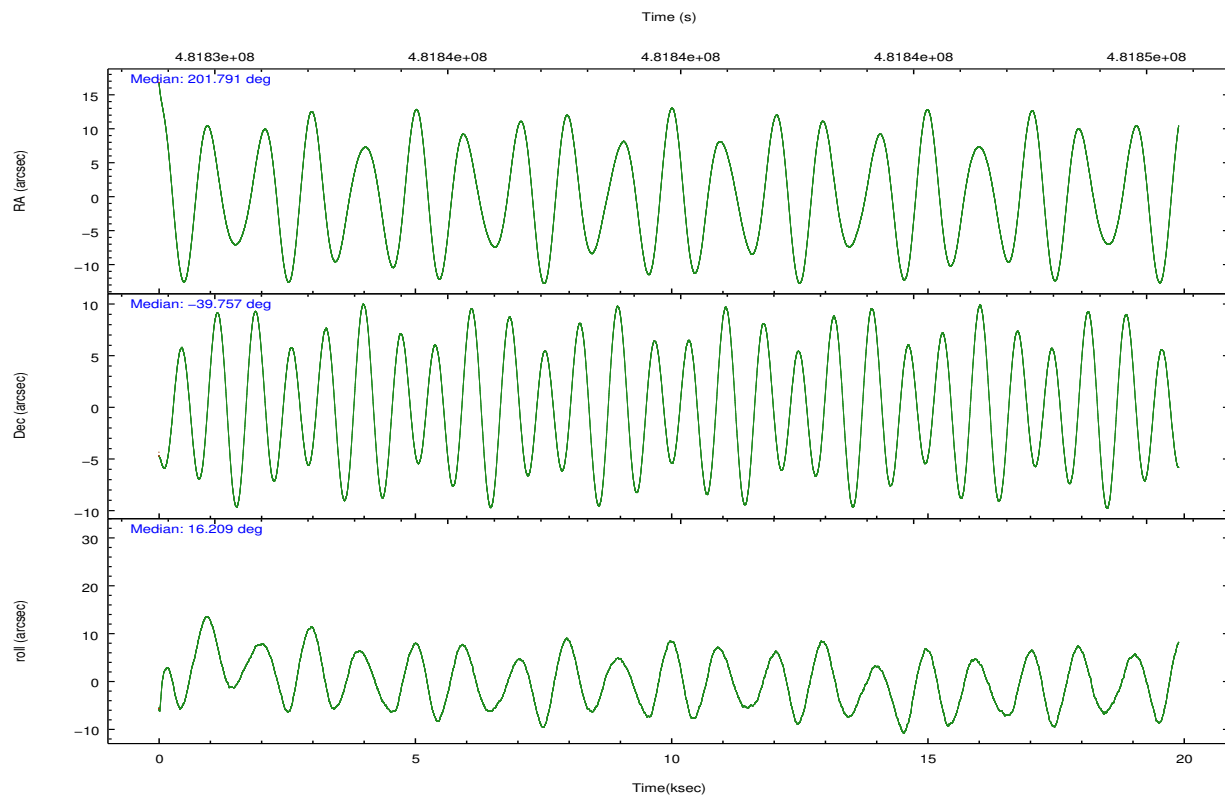
	ccd 0	ccd 1	ccd 2	ccd 3	ccd 6
grade 0 events	4215	4925	4357	4386	4524
	4%	4%	4%	4%	4%
grade 1 events	52	49	56	50	52
	0%	0%	0%	0%	0%
grade 2 events	2899	3035	2746	2626	2940
	2%	3%	2%	2%	2%
grade 3 events	1338	1332	1258	1264	1346
	1%	1%	1%	1%	1%
grade 4 events	1219	1359	1194	1328	1260
	1%	1%	1%	1%	1%
grade 5 events	4844	5119	4482	5498	5340
	4%	5%	4%	5%	4%
grade 6 events	2431	3056	2339	2544	2945
	2%	3%	2%	2%	2%
grade 7 events	80952	80024	90326	86727	91201
	82%	80%	84%	83%	83%

2.2 Compared Parameters

Parameter	Planned	Actual	Parameter	Planned	Actual
Instrument	ACIS	ACIS	Obspar format version number	7	7
Detector	ACIS-01236	ACIS-01236	Obspar file type	PREDICTED	ACTUAL
Grating	NONE	NONE	Obspar update status	NONE	UPDATED
Data mode	VFAINT	VFAINT	Number of optional ACIS chips dropped	0	0
Observation mode	POINTING	POINTING	On-chip summing requested	N	N
[deg] Pointing RA	201.766106	201.7907556776026	Subarray requested	NONE	NONE
[deg] Pointing Dec	-39.776463	-39.75654432426374	Alternating exposures requested	N	N
[deg] Pointing Roll	15.989833	16.2142811634425	[s] Primary exposure time	0.000000	3.1
[mm] SIM focus pos	-0.782348	-0.7809083437167272			
[mm] SIM defocus	0	0.001439871863259334			
[mm] SIM translation stage pos	-233.592463	-233.5874344608287			
[mm] SIM translation stage offset	0	-0.005018542100998502			
[s] Observation start time (MET)	481829979.184000	481828382.4474			
Observation start date	2013-04-08T17:38:32	2013-04-08T17:13:02			
[s] Observation end time (MET)	481849684.184000	481849920.26107			
Observation end date	2013-04-08T23:06:57	2013-04-08T23:12:00			
Read mode	TIMED	TIMED			

2.3 Aspect



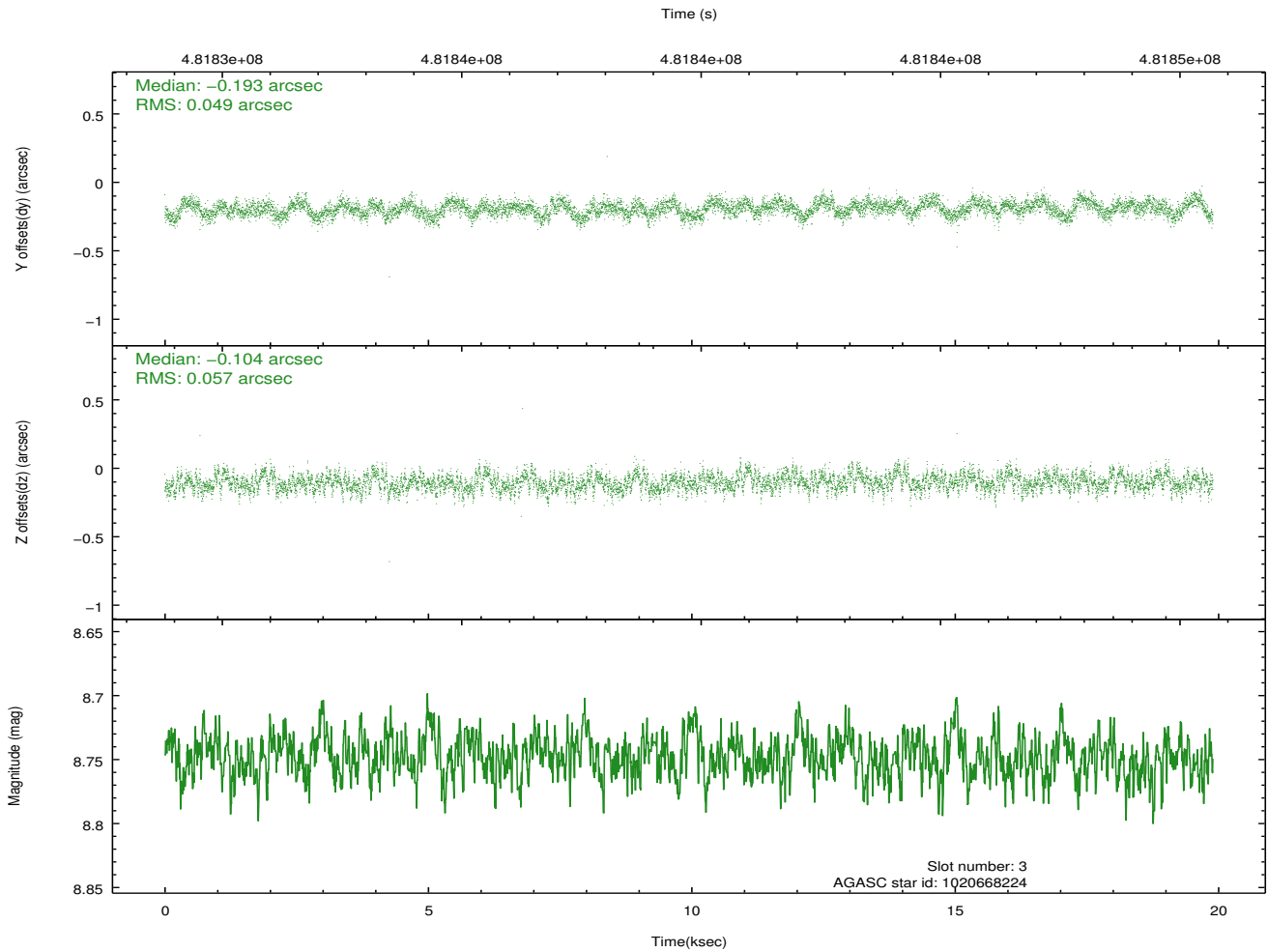
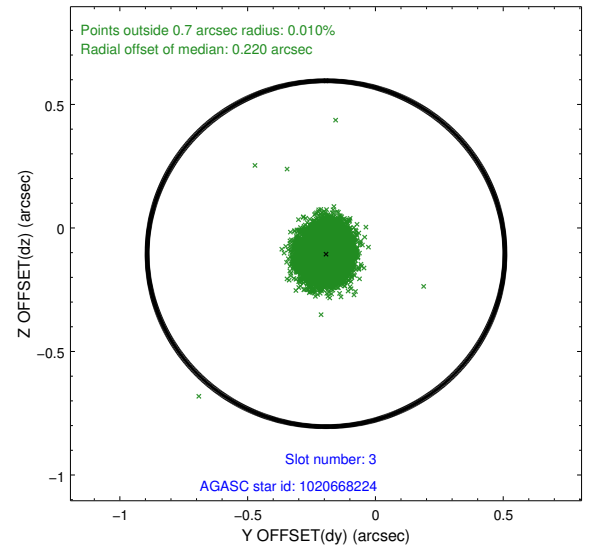
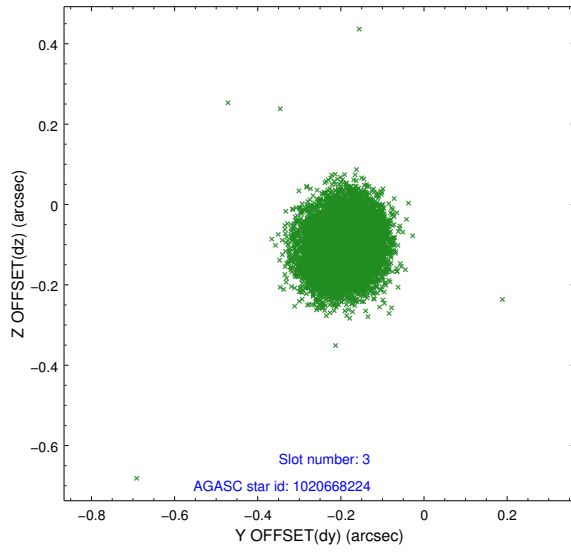


Slot Statistics

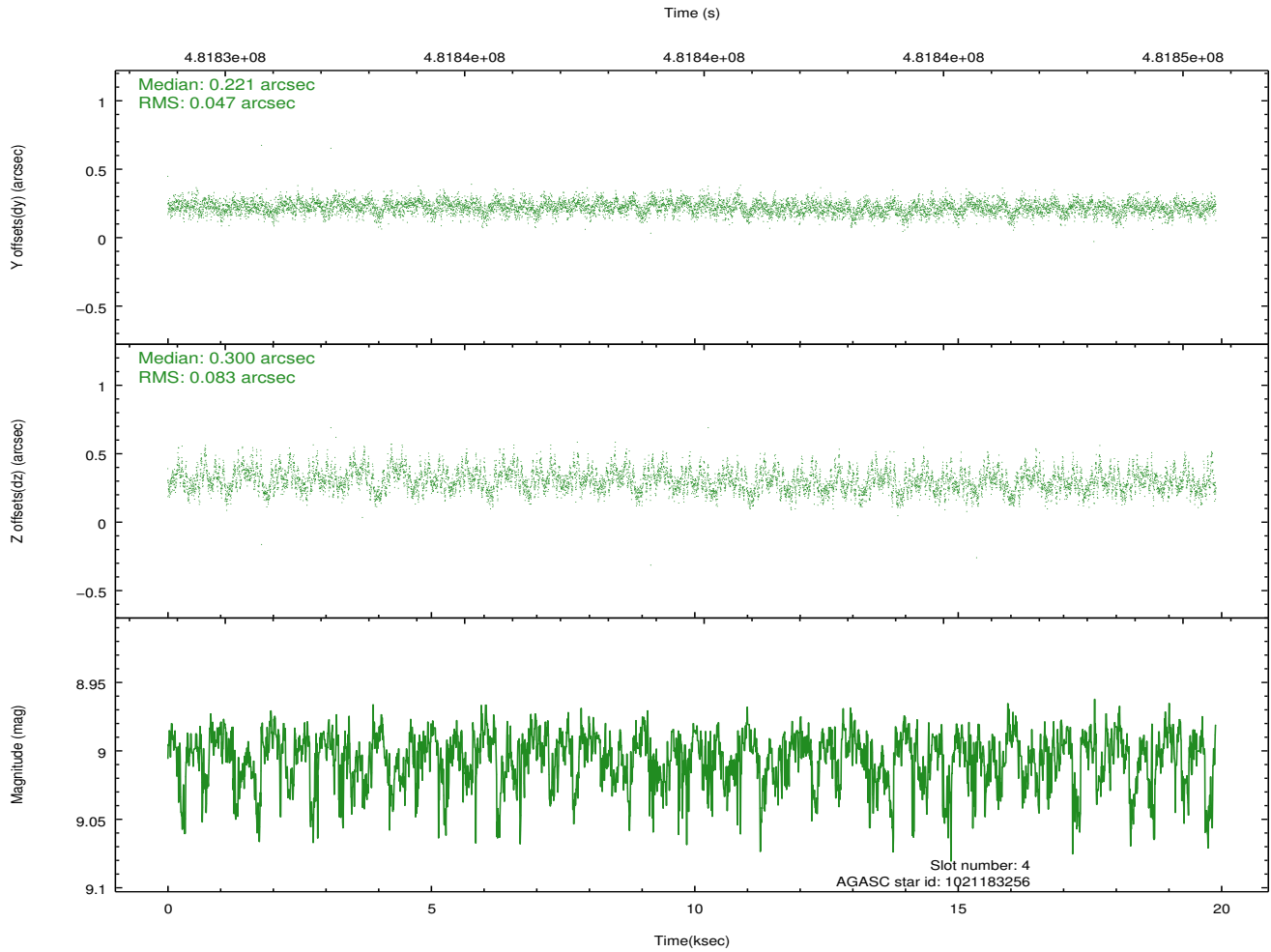
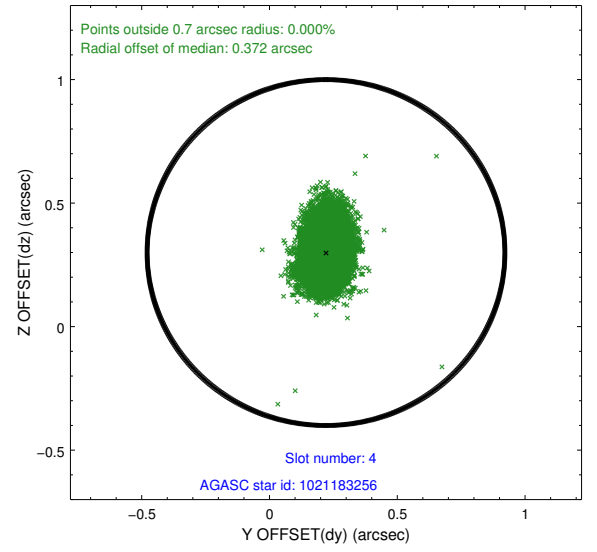
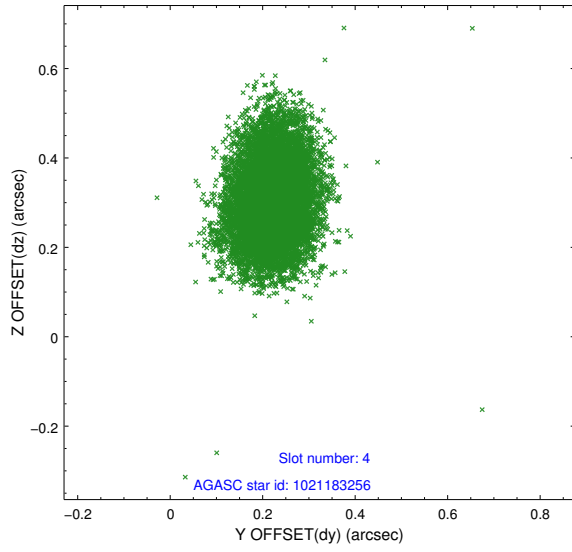
slot	status	used	id	mag	n_pts	med_dy	med_dz	dr1	dr2	ra	dec	mean_y	mean_z
0	FID		ACIS-I-1	7.18	4853	-0.009	-0.079	0.010	0.018	0.000000	0.000000	922.71	-839.47
1	FID		ACIS-I-4	7.10	4853	0.231	0.083	0.010	0.020	0.000000	0.000000	2143.07	1060.42
2	FID		ACIS-I-5	7.16	4853	-0.320	0.067	0.009	0.016	0.000000	0.000000	-1825.39	1058.41
3	GUIDE	used	1020668224	8.75	9702	-0.193	-0.104	0.081	0.126	201.999569	-39.291136	1106.34	1499.74
4	GUIDE	used	1021183256	9.00	9684	0.221	0.300	0.099	0.169	201.964820	-40.394025	-88.86	-2287.24
5	GUIDE	used	1021188640	8.44	9701	-0.016	-0.327	0.065	0.103	202.414470	-39.604967	1897.29	91.63
6	GUIDE	used	1021191568	8.60	9635	0.030	0.055	0.100	0.153	202.374064	-39.670534	1723.51	-102.63
7	GUIDE	used	1021184096	7.74	9704	-0.042	0.074	0.082	0.132	200.846796	-39.627951	-2306.37	1203.57

2.4 Star Slots

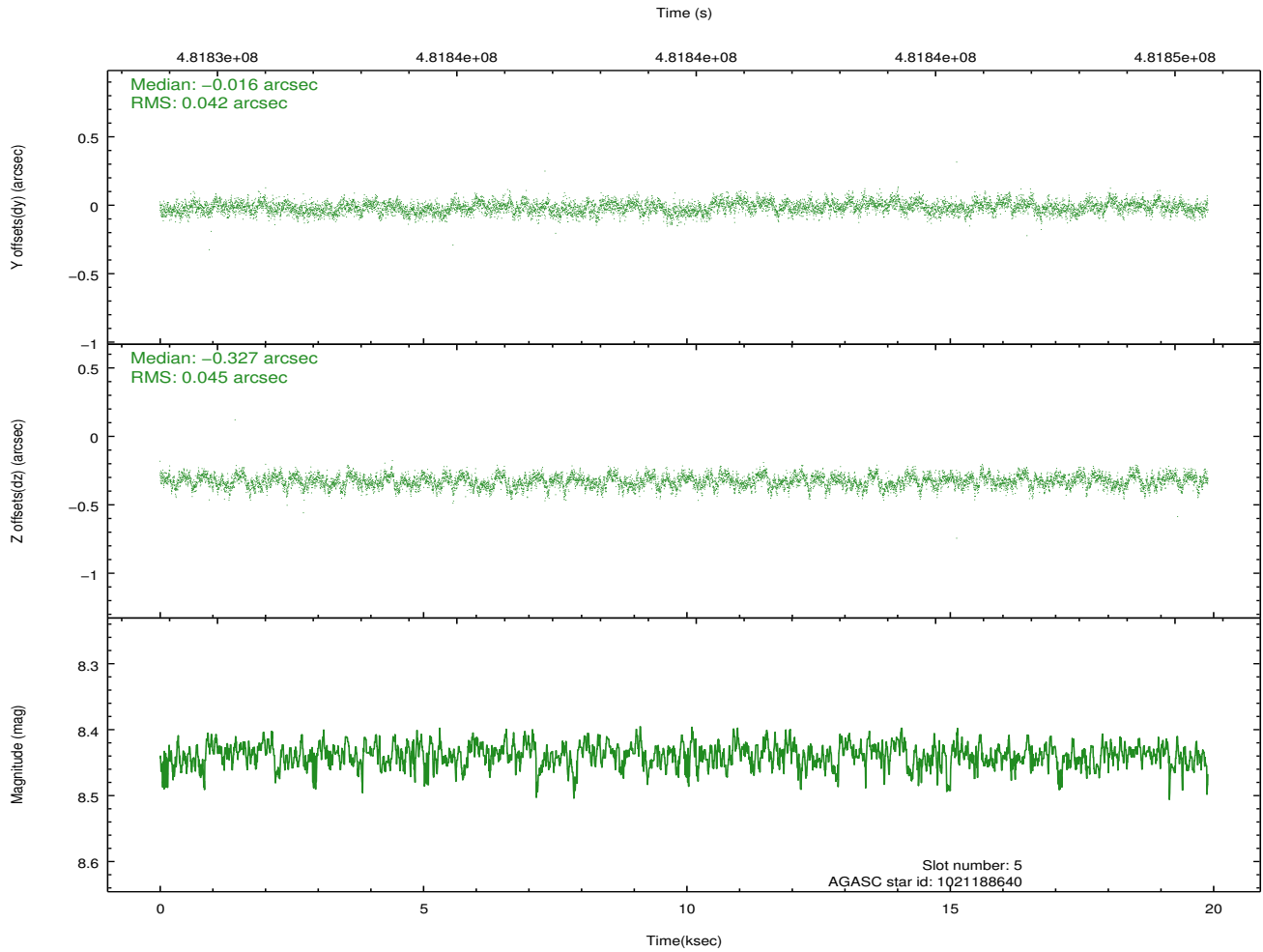
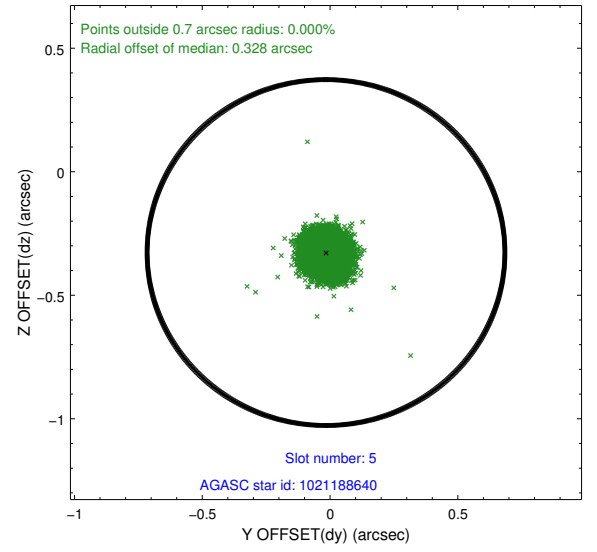
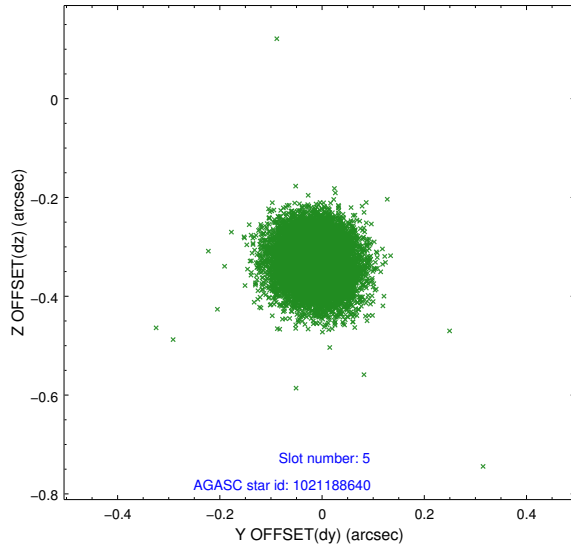
2.4.1 Slot 3



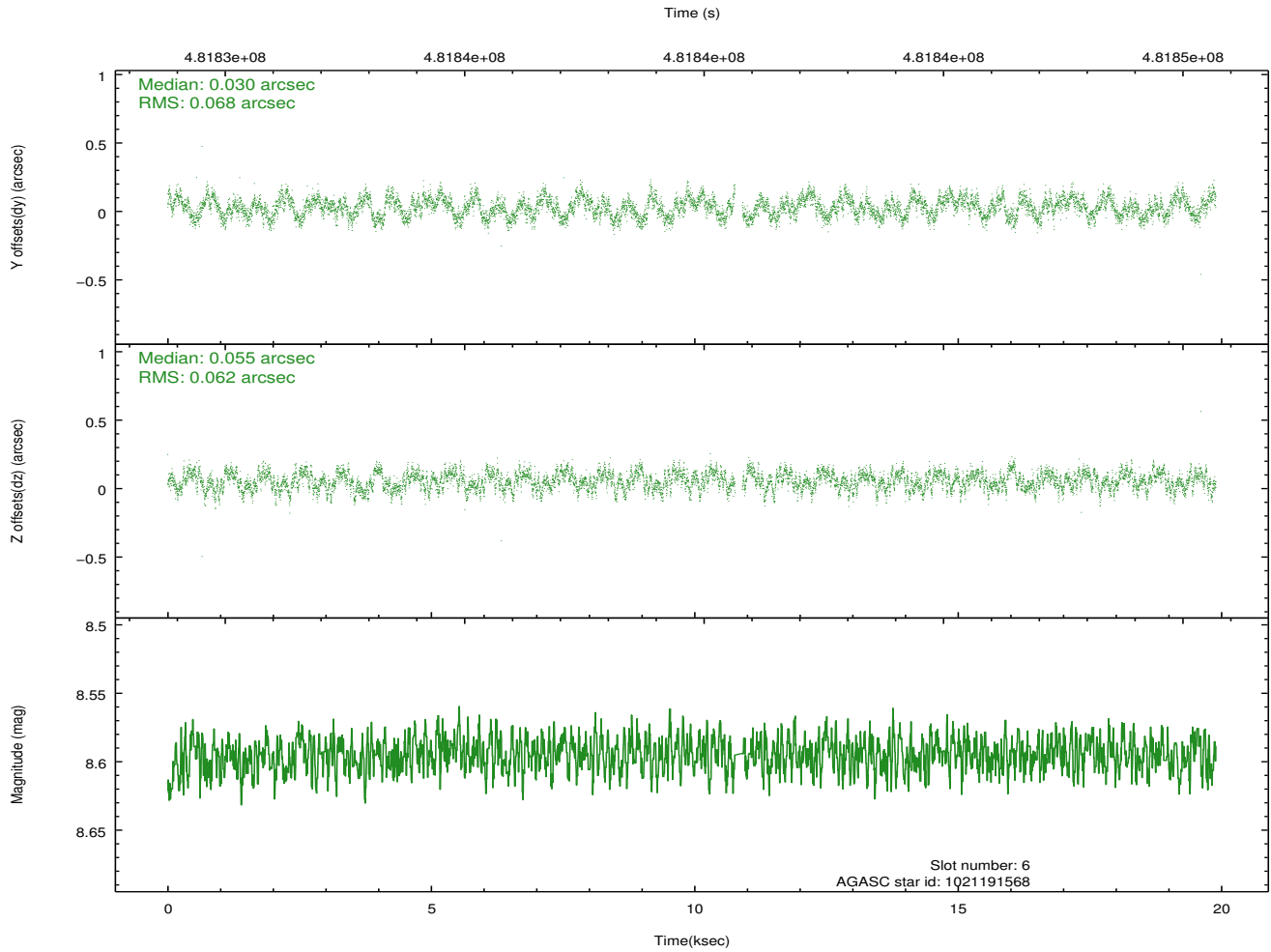
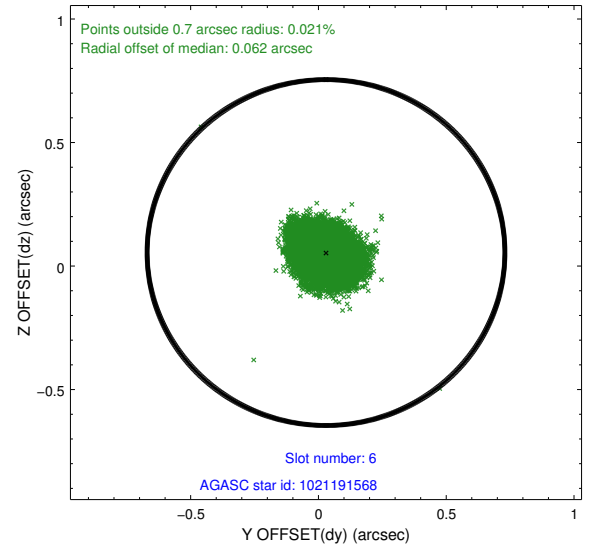
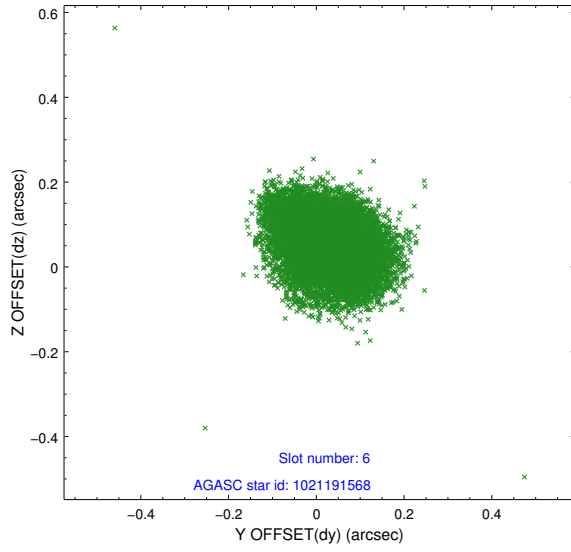
2.4.2 Slot 4



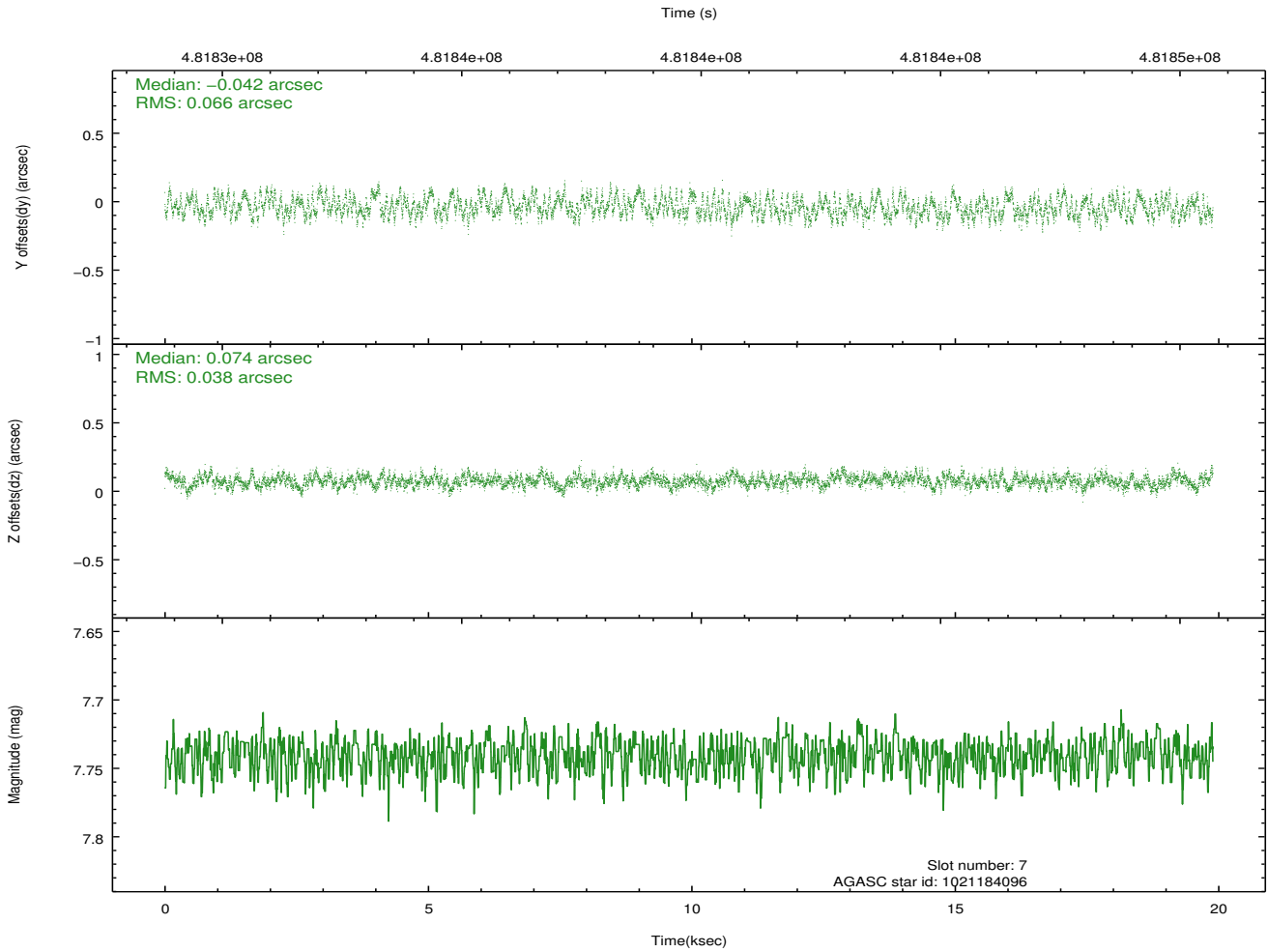
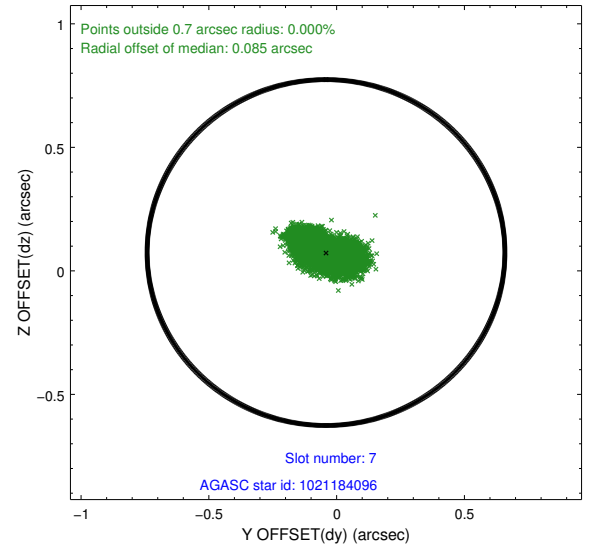
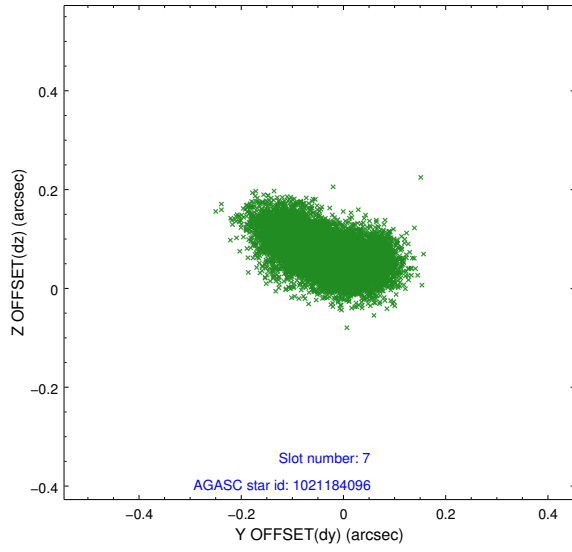
2.4.3 Slot 5



2.4.4 Slot 6

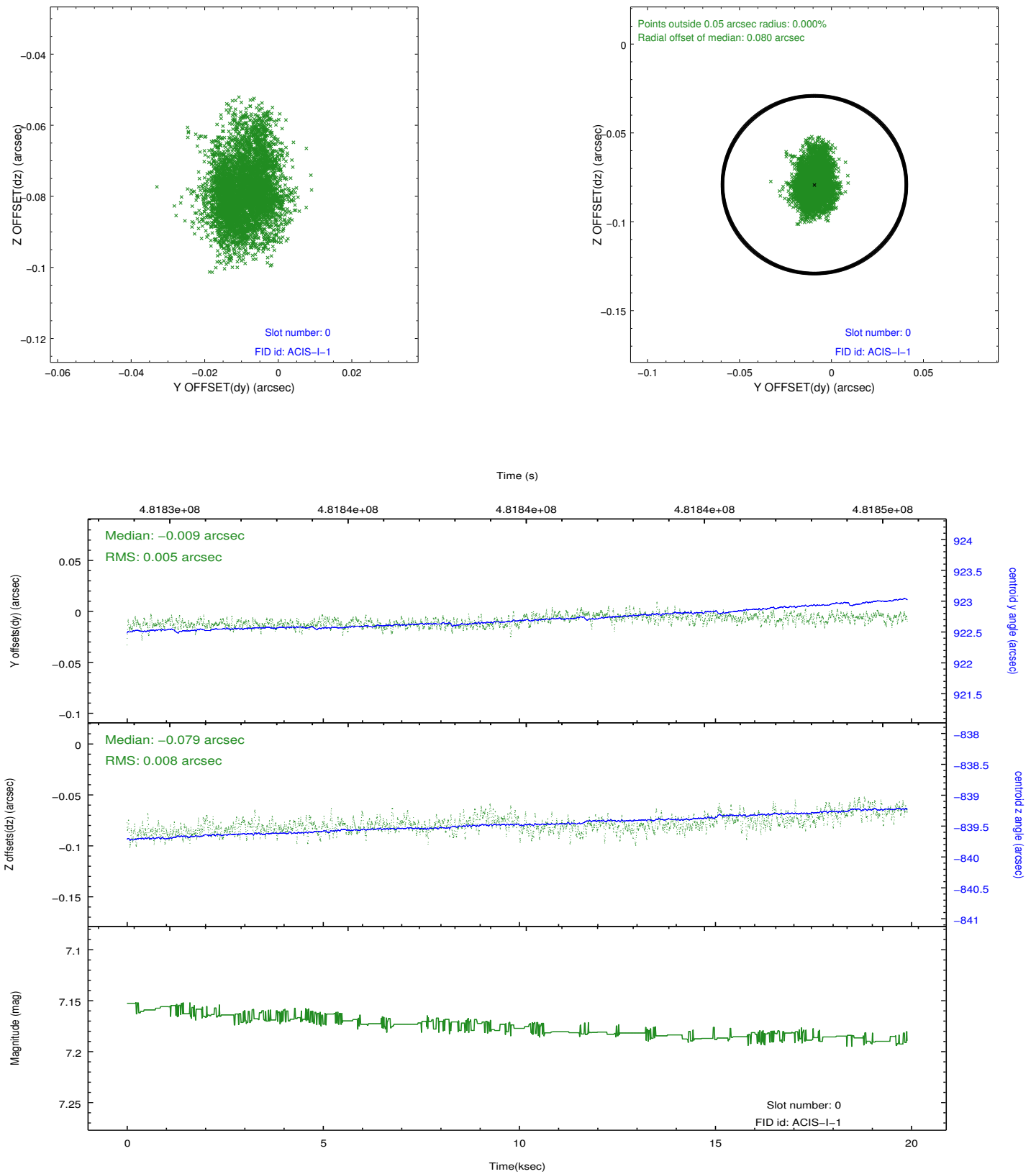


2.4.5 Slot 7

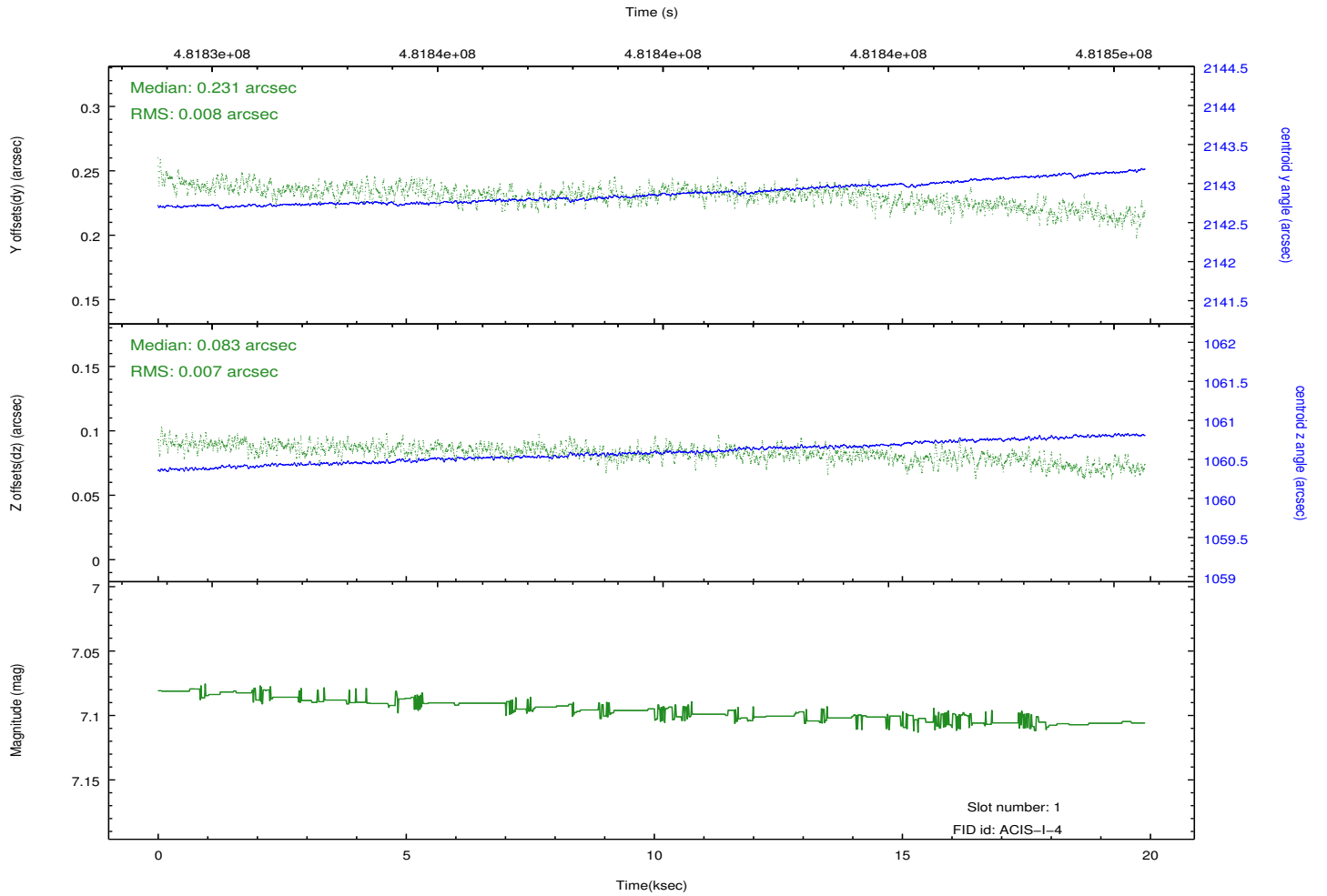
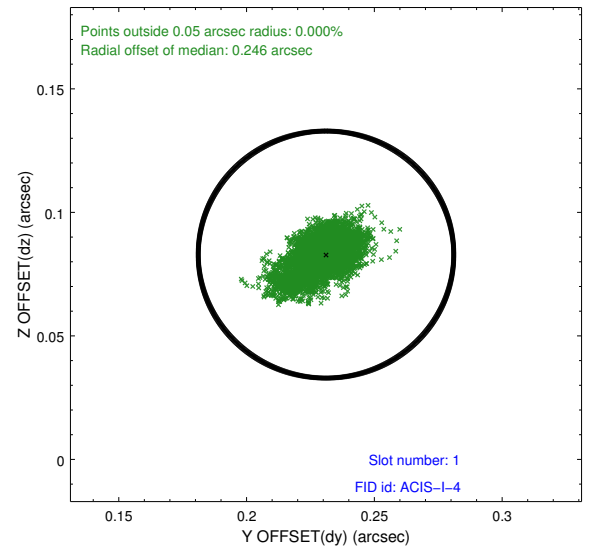
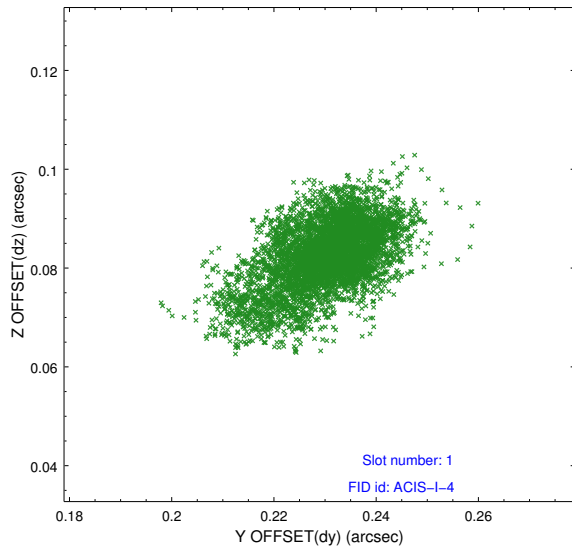


2.5 FID Slots

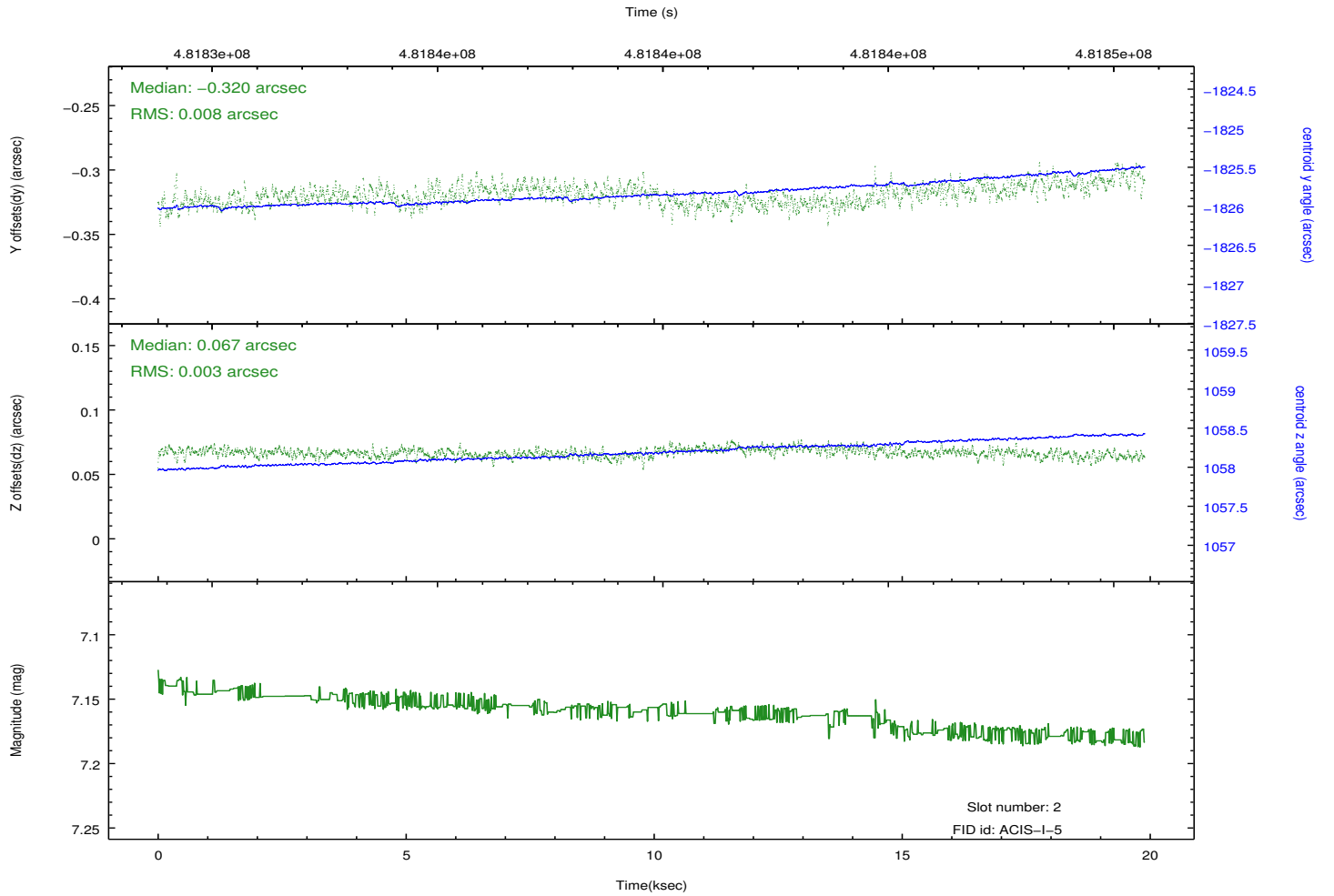
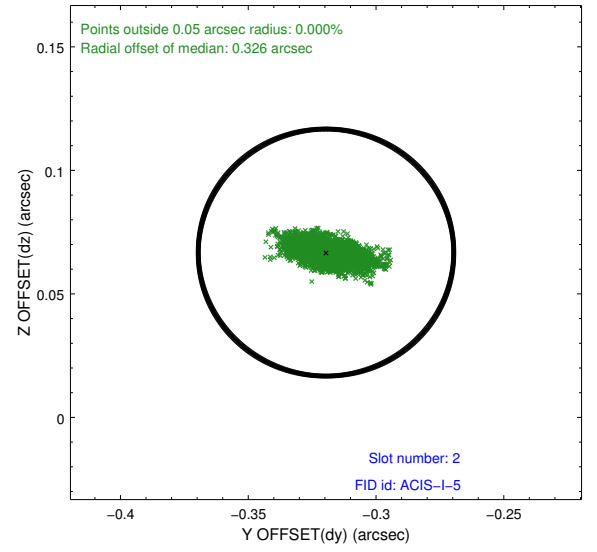
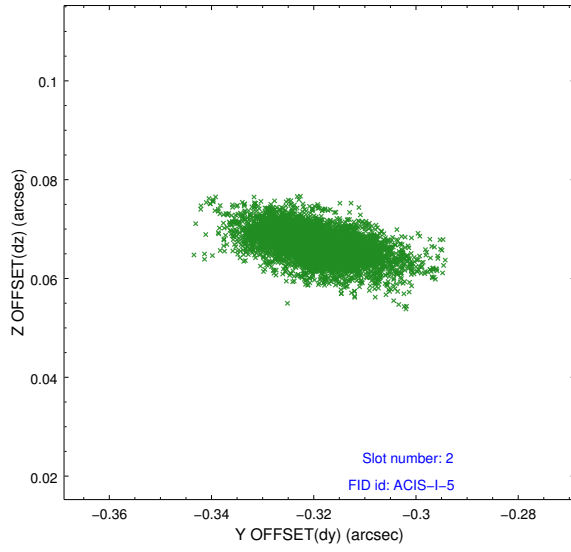
2.5.1 Slot 0



2.5.2 Slot 1



2.5.3 Slot 2



A Summary

A.1 Status

V&V Scientist	Beth Sundheim
V&V Date (YYYY-MM-DD)	2014.12.10
V&V Edition	1
V&V Disposition and Status	OK
V&V Charge Time	19.483495642066

A.2 Comments

Joint proposal with Suzaku.

These data have been reprocessed with new aspect alignment calibration files that correct small mean offsets (up to 0.4 arcsecs) and improve overall astrometric accuracy. The new calibration was determined using data from the time period being reprocessed and was performed using cross-correlation of X-ray sources with radio and optical counterparts.