

V&V Reference Report

L2 ASCDS Version : 10

Observation 15032 - L2 Version 2
Chandra X-Ray Center

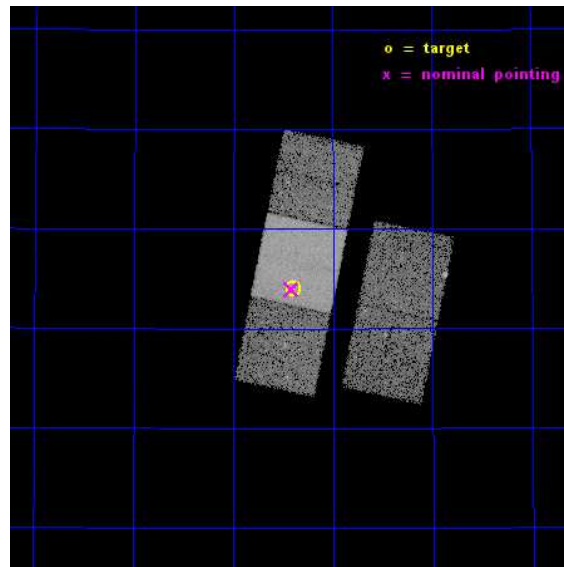
L2 Processing Date : Dec 5 2014

Contents

1	Front	2
2	OBI	3
2.1	OBI	3
2.1.1	Images	3
2.1.2	Bias	3
2.1.3	Parameters	4
2.1.4	Events	4
2.2	Compared Parameters	5
2.3	Aspect	6
2.4	Star Slots	9
2.4.1	Slot 3	9
2.4.2	Slot 4	10
2.4.3	Slot 5	11
2.4.4	Slot 6	12
2.4.5	Slot 7	13
2.5	FID Slots	14
2.5.1	Slot 0	14
2.5.2	Slot 1	15
2.5.3	Slot 2	16
A	Summary	17
A.1	Status	17
A.2	Comments	17

1 Front

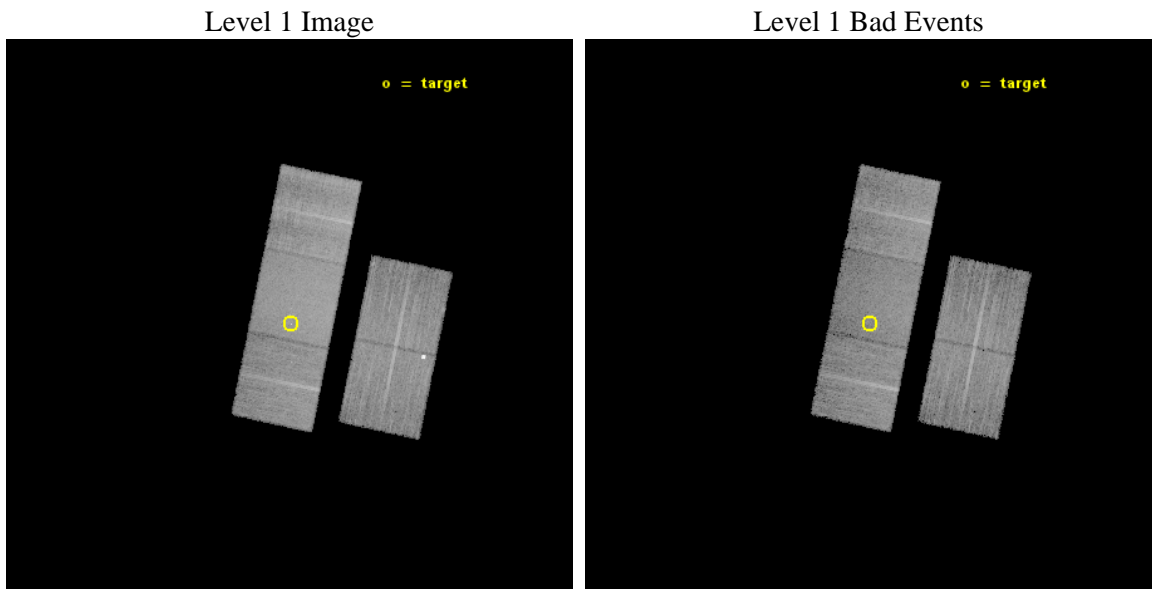
seq_num	702839	Sequence number
obs_id	15032	Observation id
title	Are Double-Peaked Optical Emission Lines Reliable Indicators of Dual AGNs?	Proposal title
observer	Dr. Claire Max	Principal investigator
object	SDSS J130724.07+460401.0	Source name
dtcycle	0	
cycle	P	events from which exps? Prim/Second/Both
ra_targ	196.850417	Observer's specified target RA [deg]
dec_targ	46.066917	Observer's specified target Dec [deg]
ra_nom	196.85451459082	Nominal RA [deg]
dec_nom	46.065880881995	Nominal Dec [deg]
roll_nom	281.72446484774	Nominal Roll [deg]
revision	2	Processing version of data
ontime	19347.100148797	Sum of GTIs [s]
livetime	19094.316042225	Livetime [s]
ontime2	19347.100148797	Sum of GTIs [s]
ontime3	19347.100148797	Sum of GTIs [s]
ontime6	19343.959128439	Sum of GTIs [s]
ontime7	19347.100148797	Sum of GTIs [s]
ontime8	19347.100148797	Sum of GTIs [s]
l2events	93827	Number of level 2 events



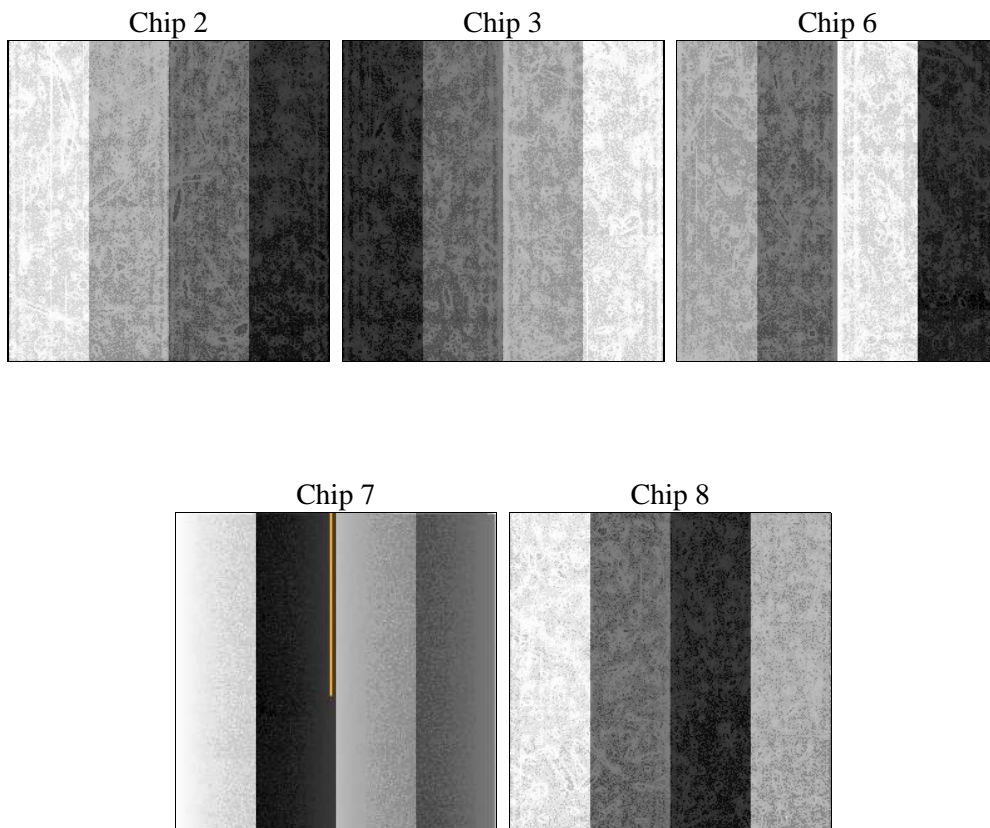
2 OBI

2.1 OBI

2.1.1 Images



2.1.2 Bias



2.1.3 Parameters

obi_num	0	Obi number	sched_exp_time	19279.643000	[s] Scheduled observation exposure time
ascdsver	10.3.1	Processing system revision	ontime	19347.100148797	Sum of GTIs [s]
caldbver	4.6.4	 	ontime2	19347.100148797	Sum of GTIs [s]
date	2014-12-06T04:04:51	Date and time of file creation	ontime3	19347.100148797	Sum of GTIs [s]
revision	2	Processing version of data	ontime6	19343.959128439	Sum of GTIs [s]
			ontime7	19347.100148797	Sum of GTIs [s]
			ontime8	19347.100148797	Sum of GTIs [s]
			l1events	530582	Number of level 1 events

2.1.4 Events

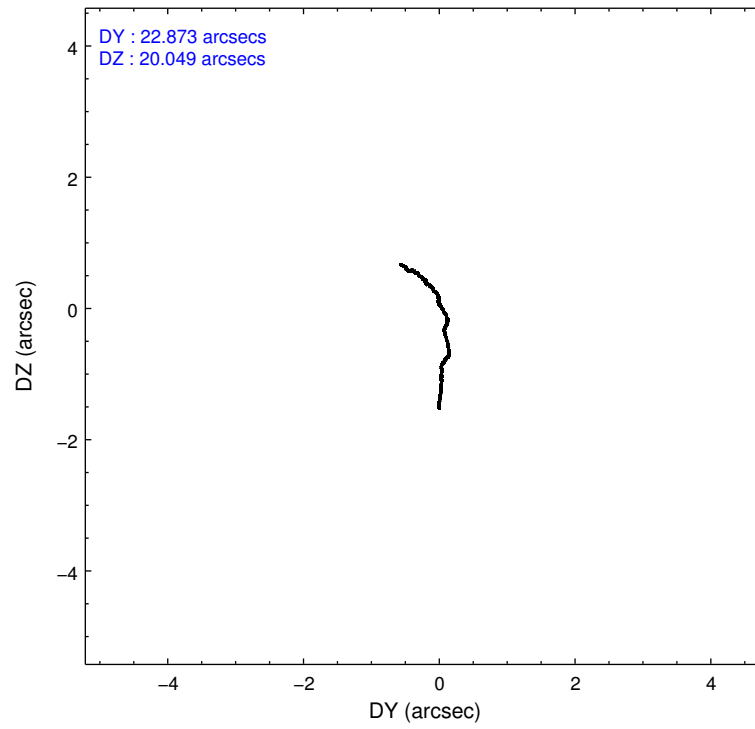
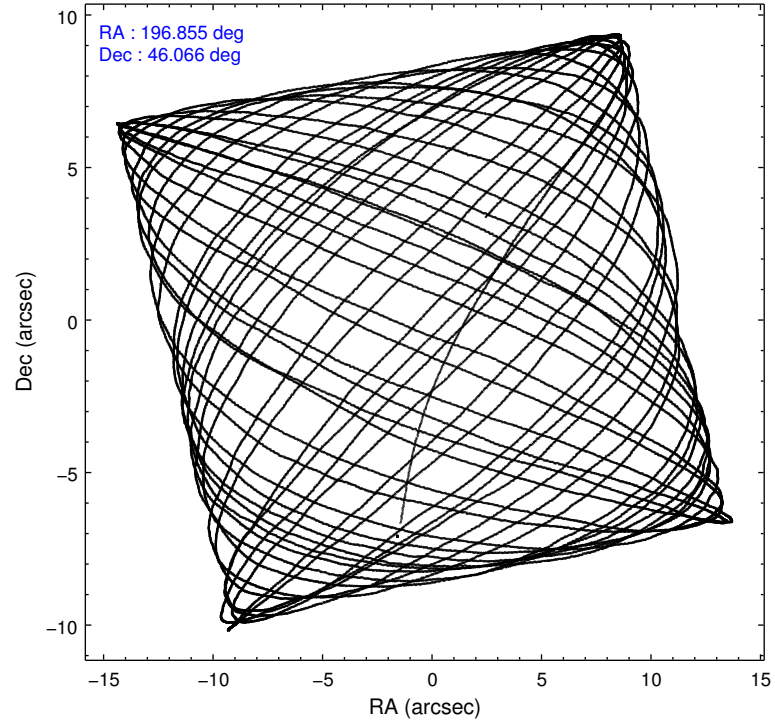
	ccd 2	ccd 3	ccd 6	ccd 7	ccd 8
level 1 events	94939	88470	94468	127280	125425
rejected events	78453	77752	82368	72210	92245
rejected %	82%	87%	87%	56%	73%

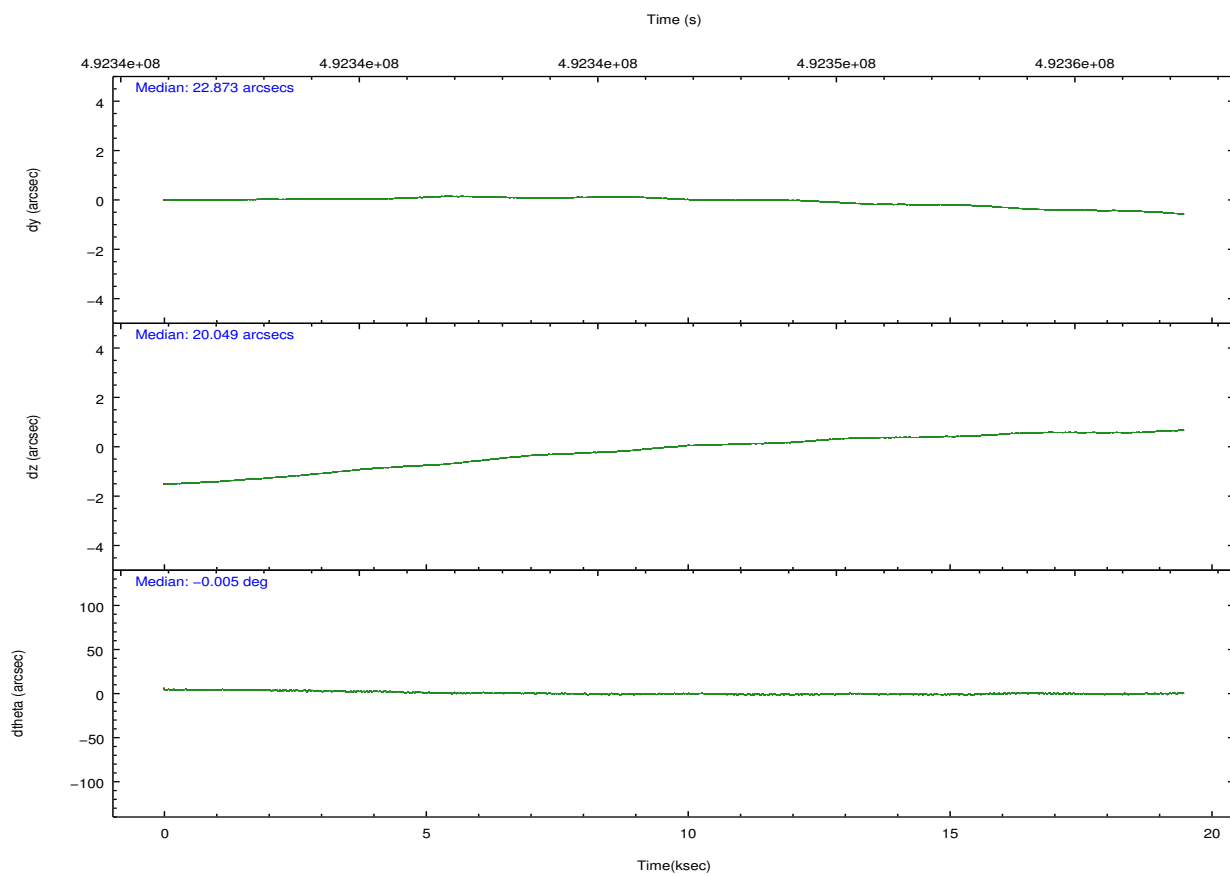
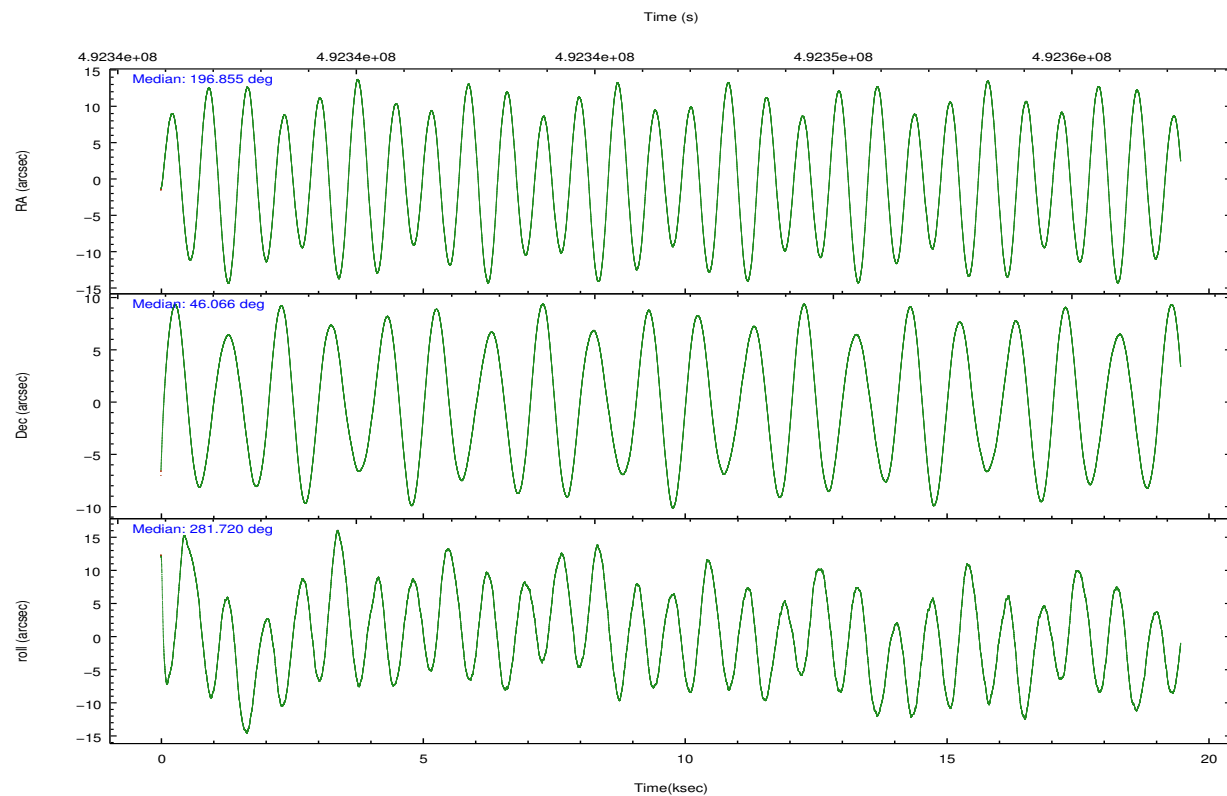
	ccd 2	ccd 3	ccd 6	ccd 7	ccd 8
grade 0 events	3777	3990	4317	4780	9626
	3%	4%	4%	3%	7%
grade 1 events	41	61	44	152	79
	0%	0%	0%	0%	0%
grade 2 events	8529	2430	2649	11334	7743
	8%	2%	2%	8%	6%
grade 3 events	1020	1092	1216	4661	3413
	1%	1%	1%	3%	2%
grade 4 events	1141	1104	1160	4553	3309
	1%	1%	1%	3%	2%
grade 5 events	4127	4902	4983	12971	6904
	4%	5%	5%	10%	5%
grade 6 events	2021	2106	2759	29747	9089
	2%	2%	2%	23%	7%
grade 7 events	74283	72785	77340	59082	85262
	78%	82%	81%	46%	67%

2.2 Compared Parameters

Parameter	Planned	Actual	Parameter	Planned	Actual
Instrument	ACIS	ACIS	Obspar format version number	7	7
Detector	ACIS-23678	ACIS-23678	Obspar file type	PREDICTED	ACTUAL
Grating	NONE	NONE	Obspar update status	NONE	UPDATED
Data mode	VFAINT	VFAINT	CCD I0 on	N	N
Observation mode	POINTING	POINTING	CCD I1 on	N	N
[deg] Pointing RA	196.827852	196.8545145908177	CCD I2 on	O2	Y
[deg] Pointing Dec	46.085992	46.06588088199513	CCD I3 on	O3	Y
[deg] Pointing Roll	281.587036	281.7244648477379	CCD S0 on	N	N
[mm] SIM focus pos	-0.684267	-0.6828225247311905	CCD S1 on	N	N
[mm] SIM defocus	0	0.001444936568705701	CCD S2 on	O4	Y
[mm] SIM translation stage pos	-190.132523	-190.1425803651734	CCD S3 on	Y	Y
[mm] SIM translation stage offset	0	0.01005778216563158	CCD S4 on	O1	Y
[s] Observation start time (MET)	492337044.184000	492335804.08039	CCD S5 on	N	N
Observation start date	2013-08-08T08:16:17	2013-08-08T07:56:44	Number of optional ACIS chips dropped	0	0
[s] Observation end time (MET)	492356323.184000	492356552.13152	On-chip summing requested	N	N
Observation end date	2013-08-08T13:37:36	2013-08-08T13:42:32	Subarray requested	NONE	NONE
Read mode	TIMED	TIMED	Alternating exposures requested	N	N
			[s] Primary exposure time	0.000000	3.1

2.3 Aspect



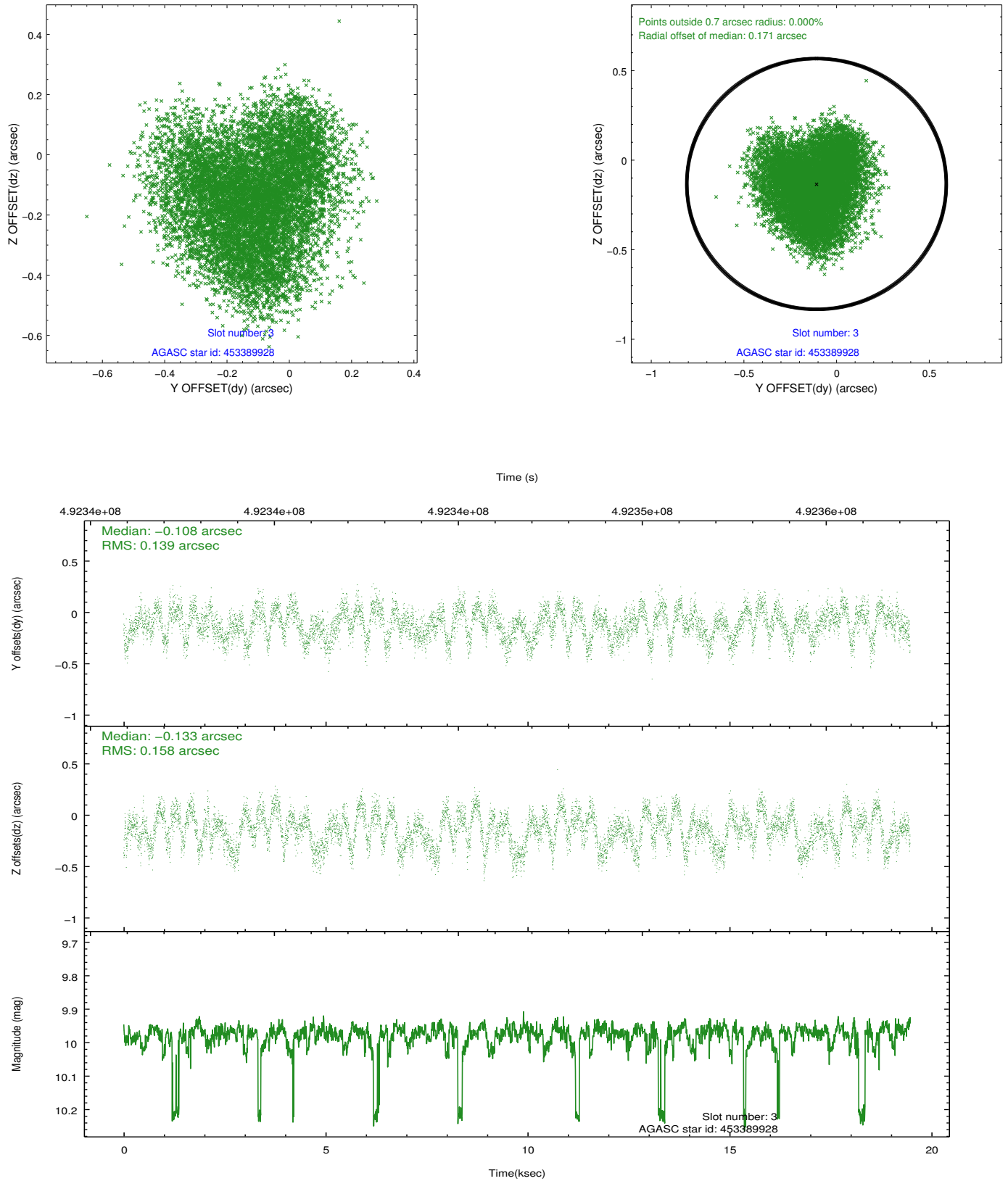


Slot Statistics

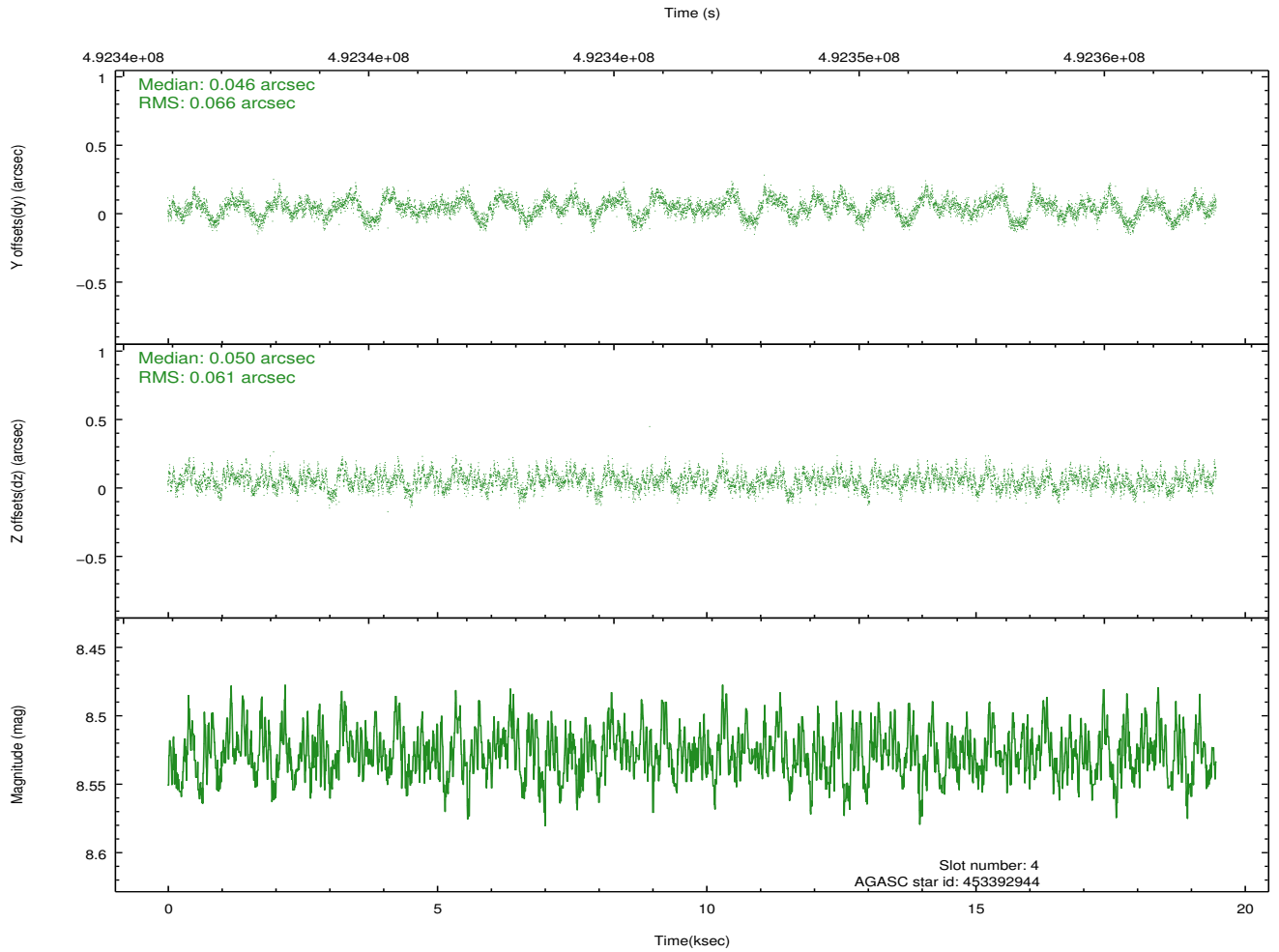
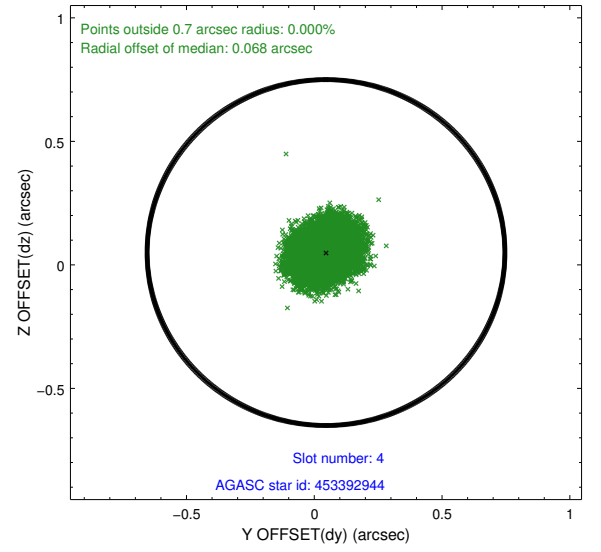
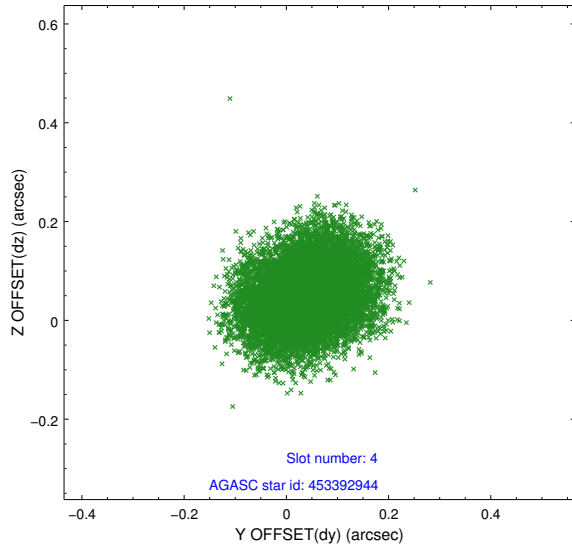
slot	status	used	id	mag	n_pts	med_dy	med_dz	dr1	dr2	ra	dec	mean_y	mean_z
0	FID		ACIS-S-2	7.03	4749	-0.127	-0.030	0.020	0.047	0.000000	0.000000	-776.09	-1741.36
1	FID		ACIS-S-4	7.11	4749	0.309	0.072	0.015	0.029	0.000000	0.000000	2137.51	167.05
2	FID		ACIS-S-5	7.14	4749	-0.212	-0.031	0.018	0.041	0.000000	0.000000	-1828.78	160.82
3	GUIDE	used	453389928	9.97	9445	-0.108	-0.133	0.233	0.344	196.255466	45.509036	1740.24	-1830.71
4	GUIDE	used	453392944	8.53	9493	0.046	0.050	0.097	0.151	196.043621	46.459257	-1716.43	-1634.45
5	GUIDE	used	453395040	9.61	9458	0.266	0.187	0.192	0.305	196.255895	46.165420	-570.60	-1338.63
6	GUIDE	used	453527416	9.72	9479	0.033	-0.064	0.204	0.359	197.089270	46.385166	-925.32	852.31
7	GUIDE	used	453527560	9.54	9390	-0.224	-0.051	0.118	0.204	196.886736	46.651395	-1964.36	551.20

2.4 Star Slots

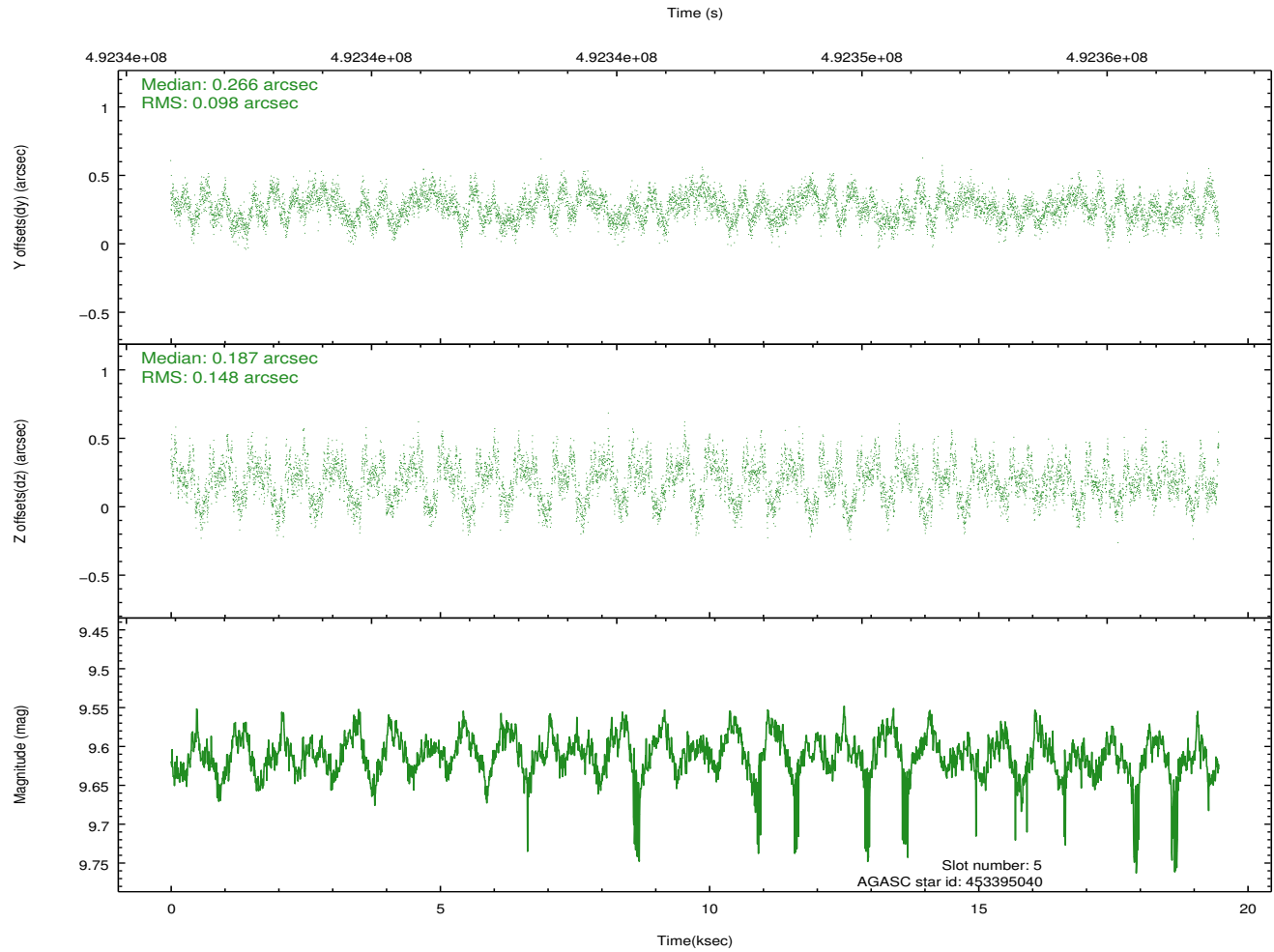
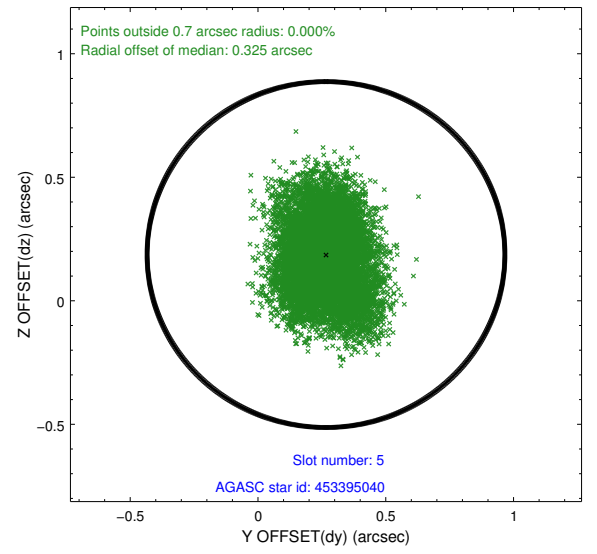
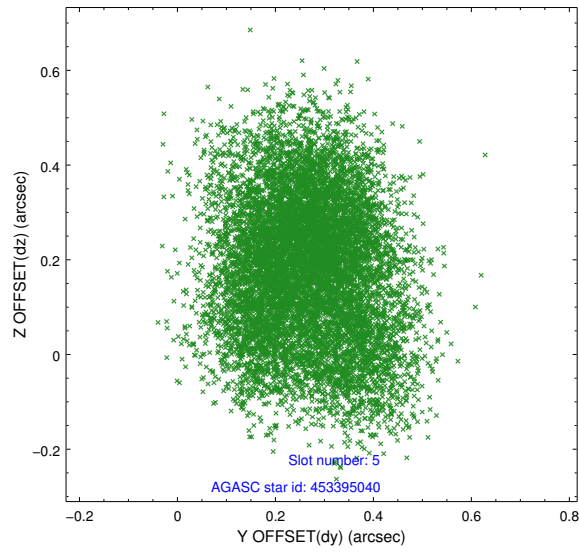
2.4.1 Slot 3



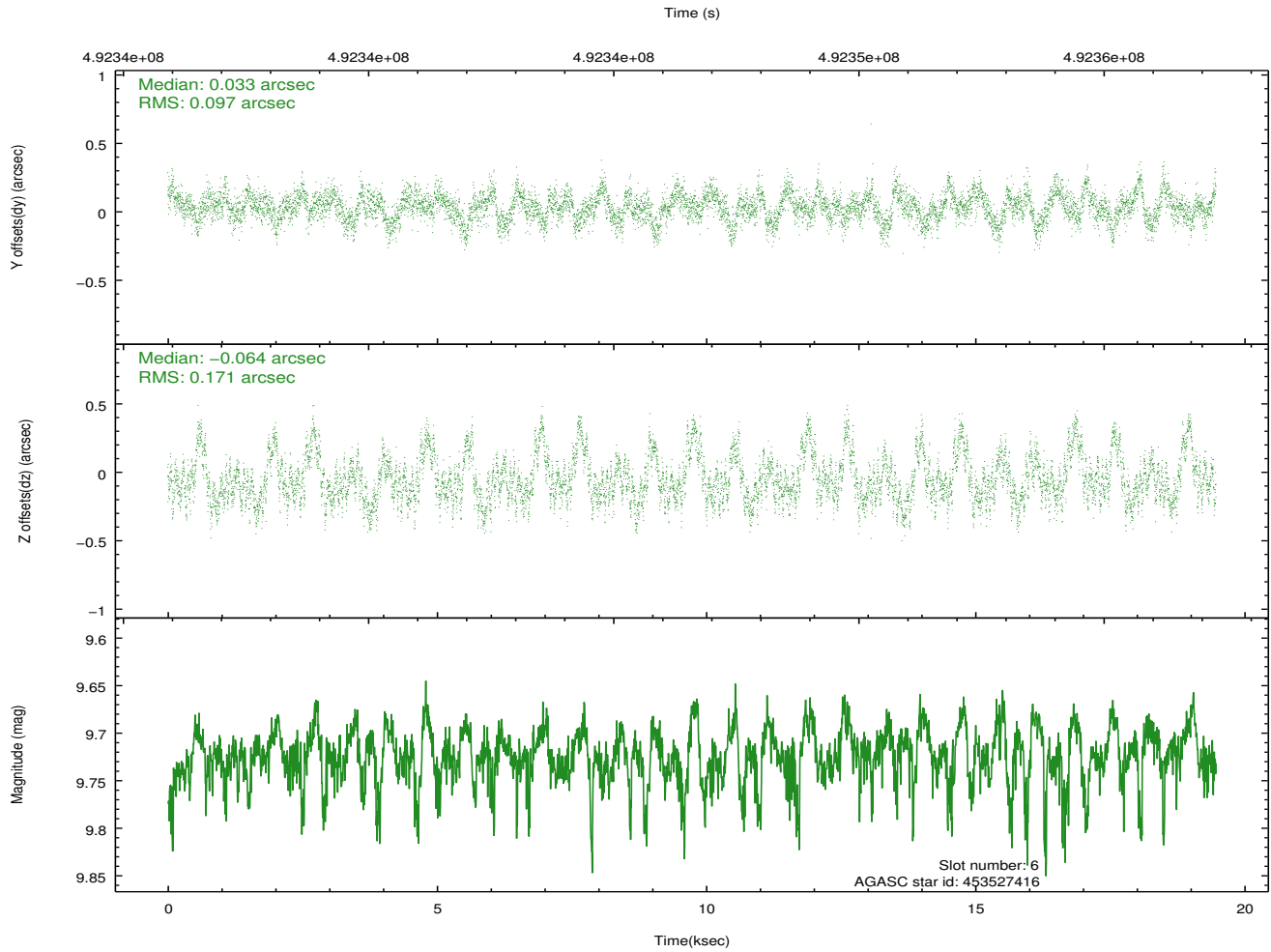
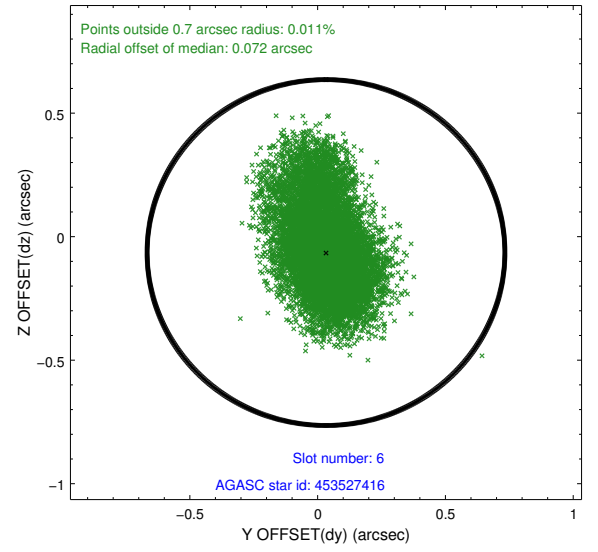
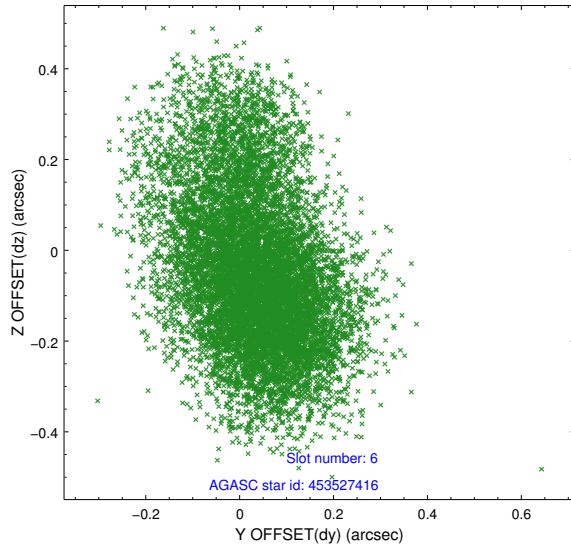
2.4.2 Slot 4



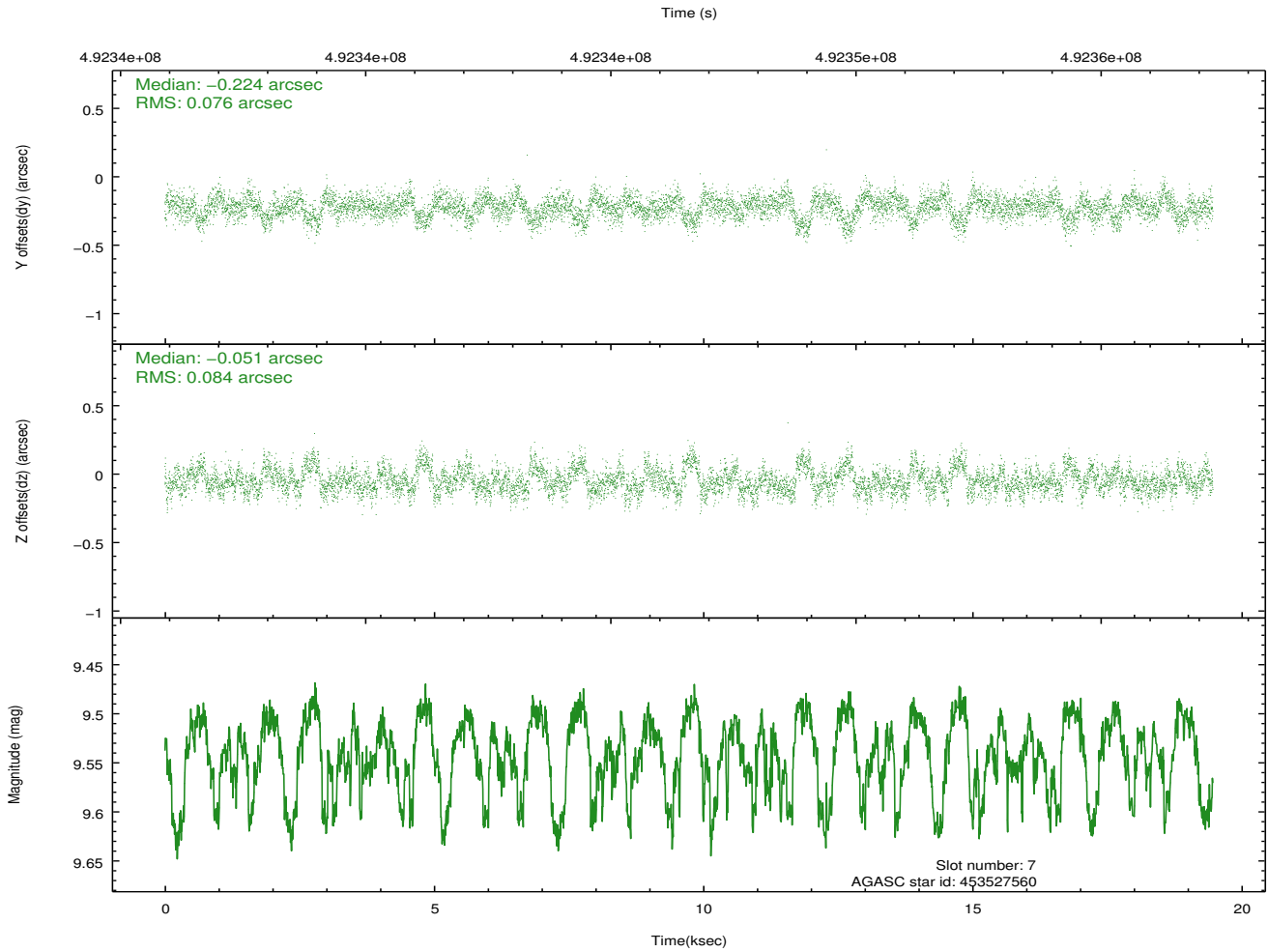
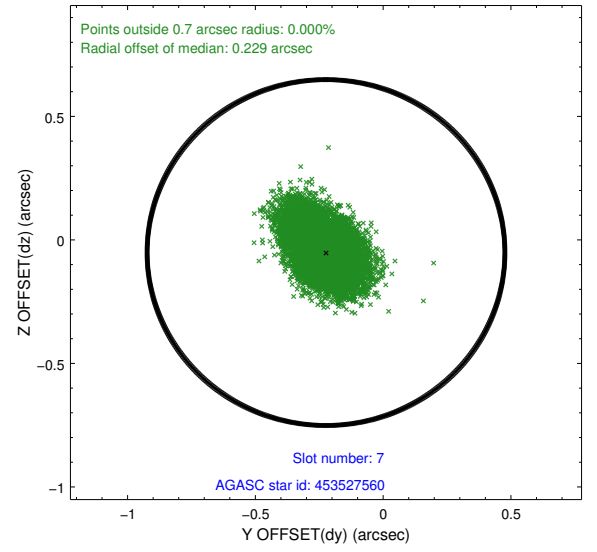
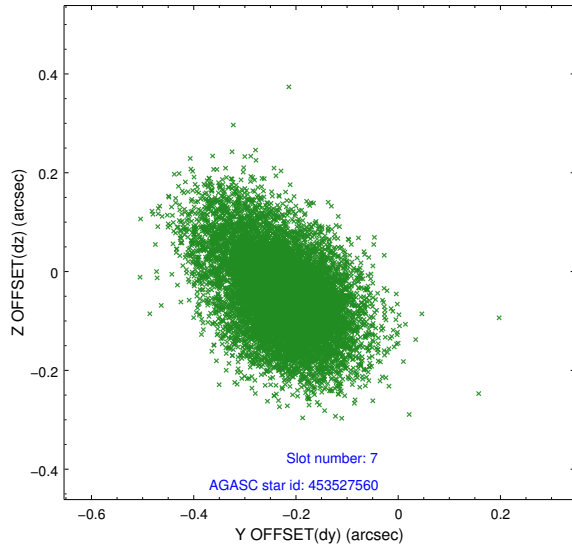
2.4.3 Slot 5



2.4.4 Slot 6

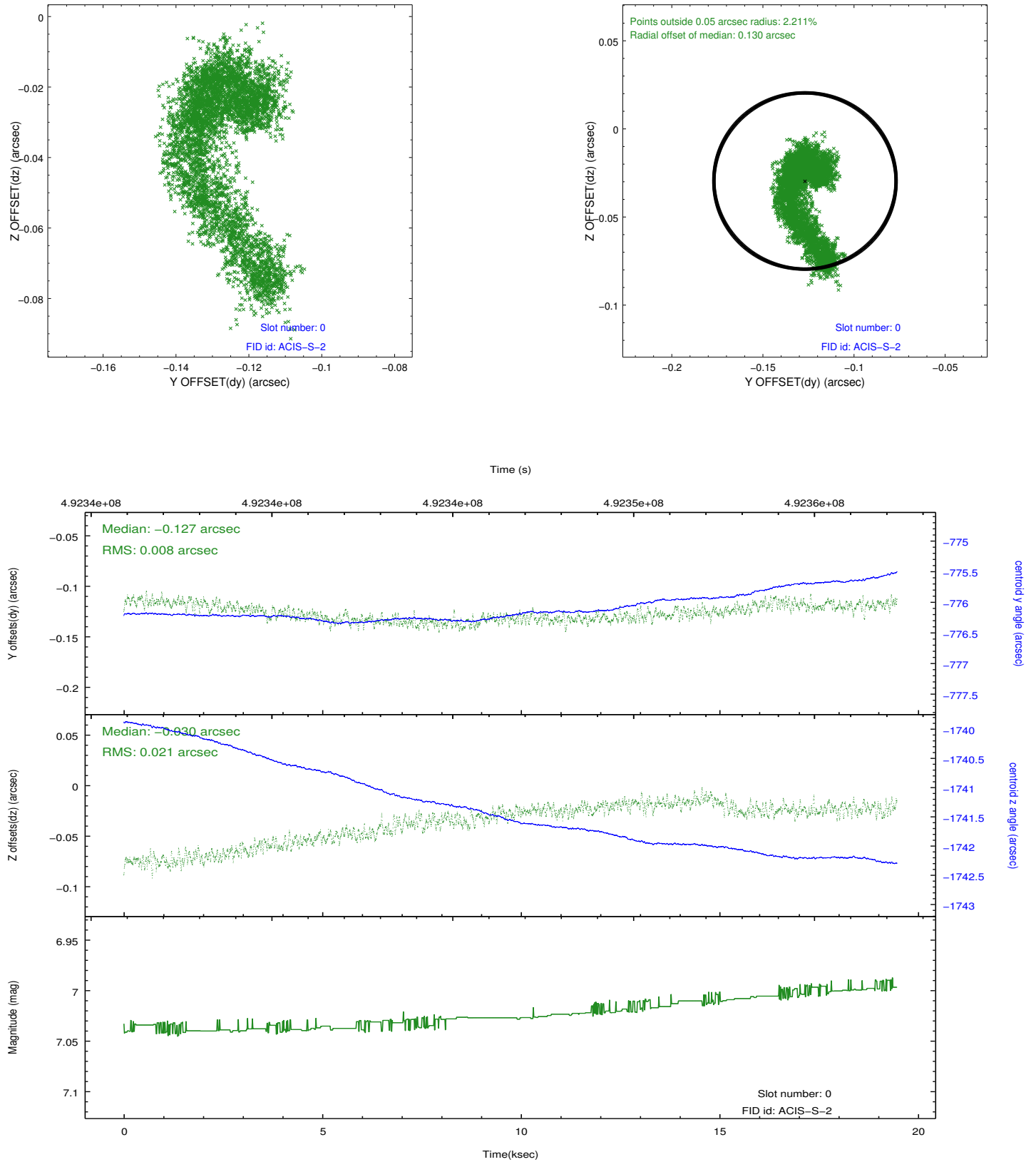


2.4.5 Slot 7

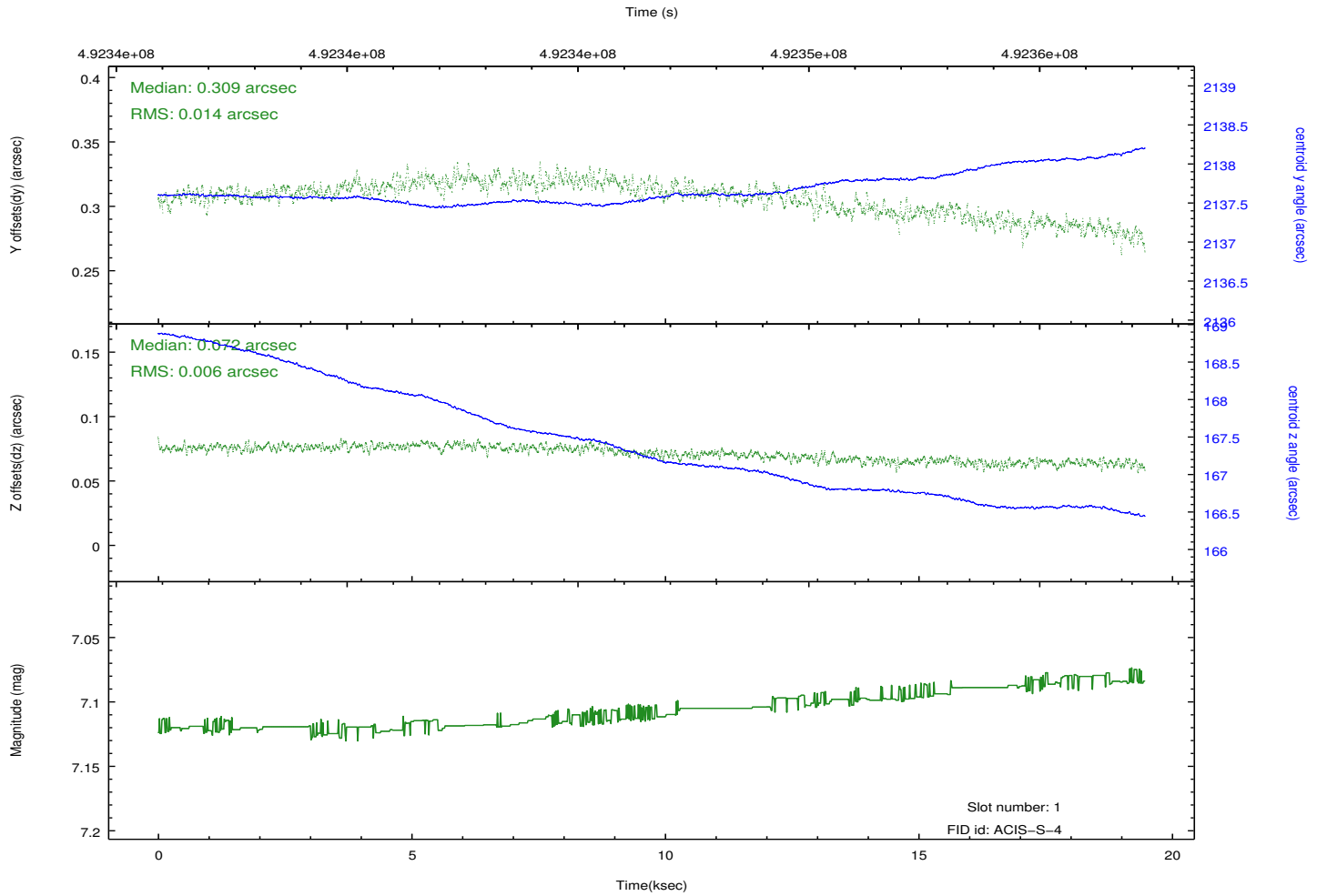
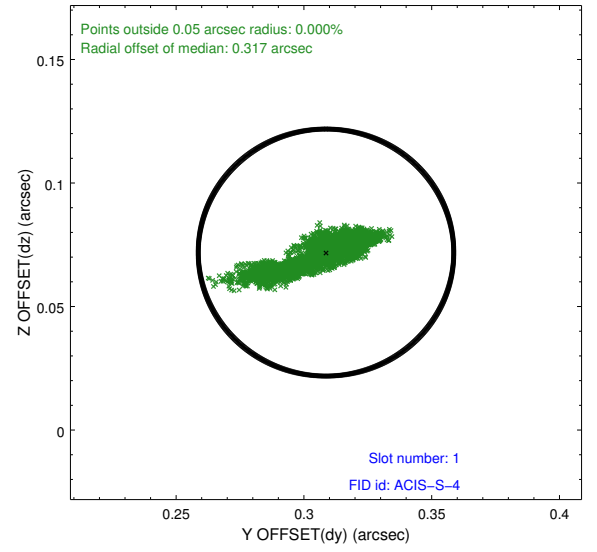
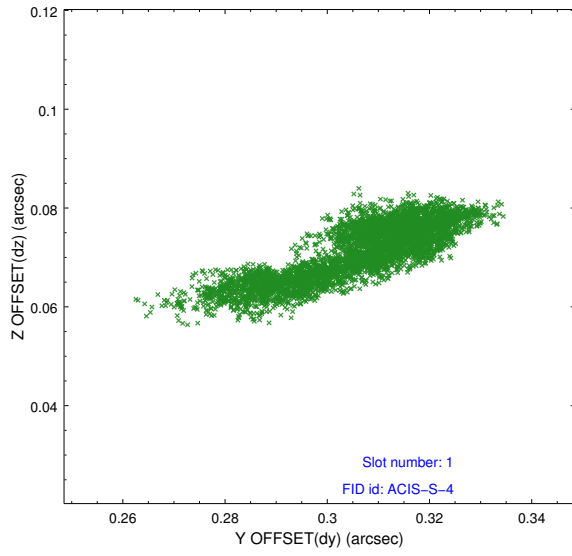


2.5 FID Slots

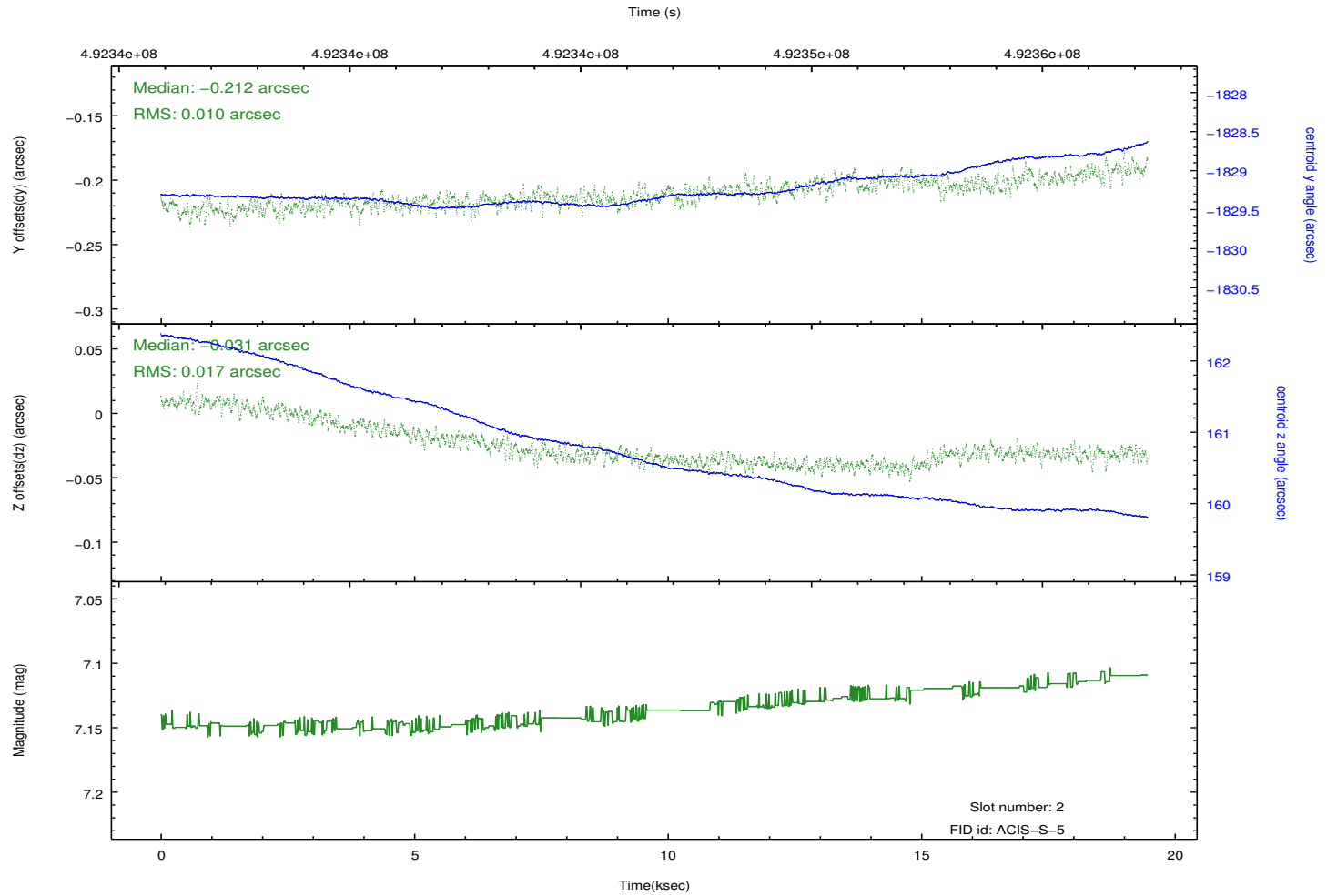
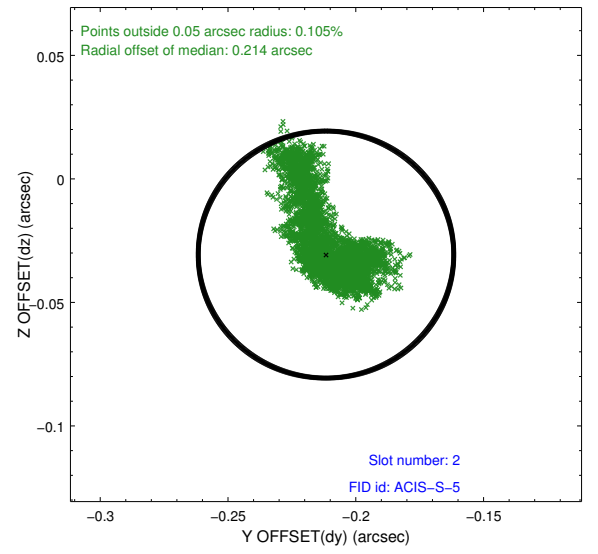
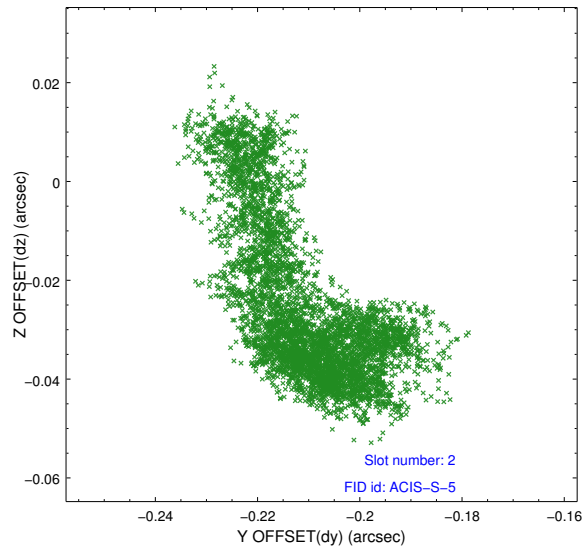
2.5.1 Slot 0



2.5.2 Slot 1



2.5.3 Slot 2



A Summary

A.1 Status

V&V Scientist	Beth Sundheim
V&V Date (YYYY-MM-DD)	2014.12.11
V&V Edition	1
V&V Disposition and Status	OK
V&V Charge Time	19.347100148797

A.2 Comments

These data have been reprocessed with new aspect alignment calibration files that correct small mean offsets (up to 0.4 arcsecs) and improve overall astrometric accuracy. The new calibration was determined using data from the time period being reprocessed and was performed using cross-correlation of X-ray sources with radio and optical counterparts.