

V&V Reference Report

L2 ASCDS Version : 10.2.1

Observation 14952 - L2 Version 2
Chandra X-Ray Center

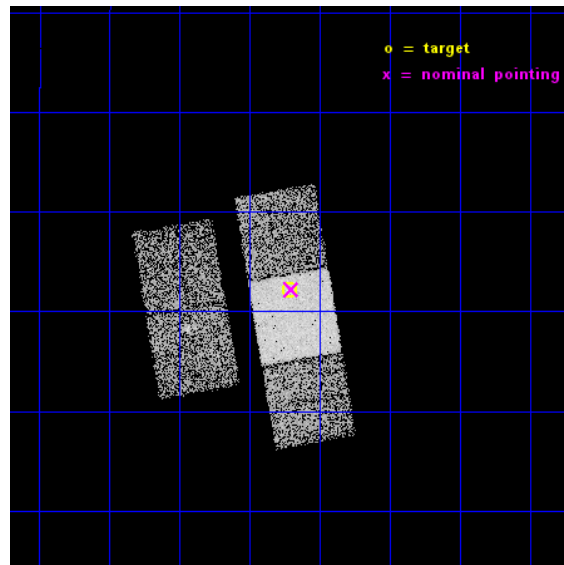
L2 Processing Date : Dec 10 2014

Contents

1	Front	2
2	OBI	3
2.1	OBI	3
2.1.1	Images	3
2.1.2	Bias	3
2.1.3	Parameters	4
2.1.4	Events	4
2.2	Compared Parameters	5
2.3	Aspect	6
2.4	Star Slots	9
2.4.1	Slot 3	9
2.4.2	Slot 4	10
2.4.3	Slot 5	11
2.4.4	Slot 6	12
2.4.5	Slot 7	13
2.5	FID Slots	14
2.5.1	Slot 0	14
2.5.2	Slot 1	15
2.5.3	Slot 2	16
A	Summary	17
A.1	Status	17
A.2	Comments	17

1 Front

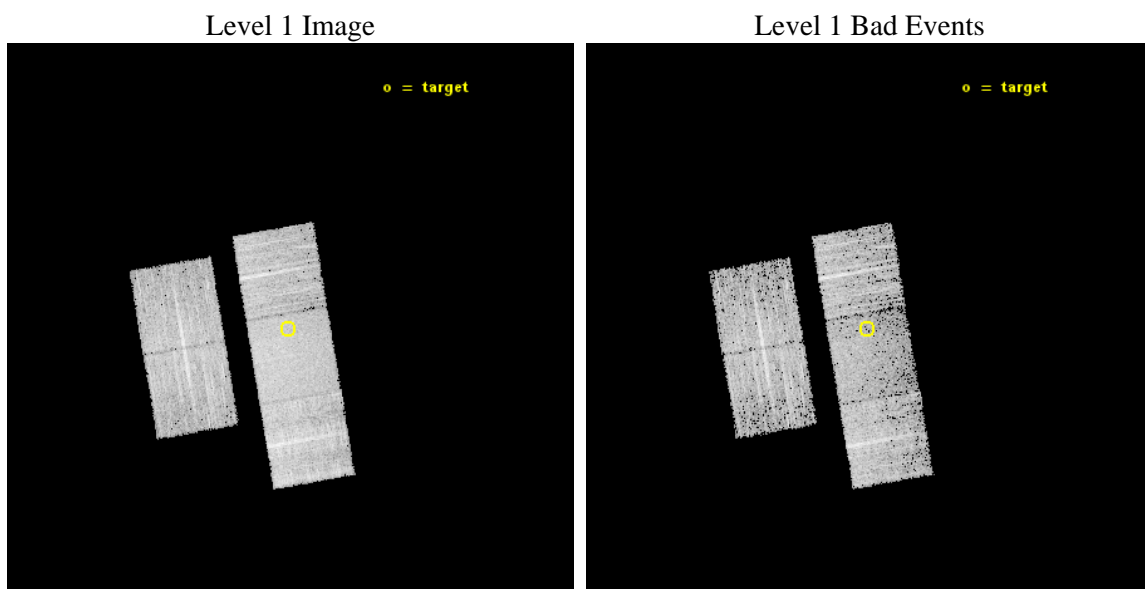
seq_num	702761	Sequence number
obs_id	14952	Observation id
title	Understanding the Nature of PHL 1811 Analogs	Proposal title
observer	Prof. William Brandt	Principal investigator
object	SDSS J1133+1142	Source name
dtcycle	0	
cycle	P	events from which exps? Prim/Second/Both
ra_targ	173.427917	Observer's specified target RA [deg]
dec_targ	11.701722	Observer's specified target Dec [deg]
ra_nom	173.42561188634	Nominal RA [deg]
dec_nom	11.703760261219	Nominal Dec [deg]
roll_nom	80.2113067906	Nominal Roll [deg]
revision	2	Processing version of data
ontime	9469.6200706363	Sum of GTIs [s]
livetime	9345.8925129805	Livetime [s]
ontime2	9469.4559106231	Sum of GTIs [s]
ontime3	9466.3969302177	Sum of GTIs [s]
ontime6	9469.579030633	Sum of GTIs [s]
ontime7	9469.6200706363	Sum of GTIs [s]
ontime8	9469.4969506264	Sum of GTIs [s]
l2events	39190	Number of level 2 events



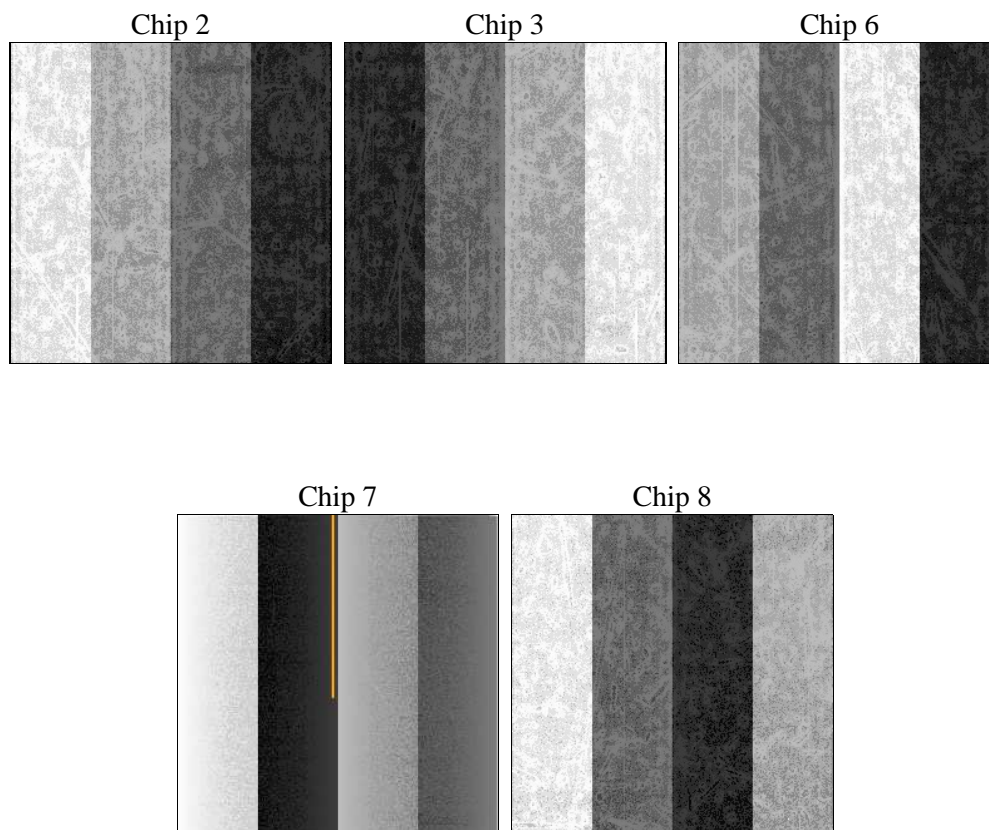
2 OBI

2.1 OBI

2.1.1 Images



2.1.2 Bias



2.1.3 Parameters

obi_num	0	Obi number	sched_exp_time	9400.000000	[s] Scheduled observation exposure time
ascdsver	10.3.1	Processing system revision	ontime	9469.6200706363	Sum of GTIs [s]
caldsver	4.6.4	 	ontime2	9469.4559106231	Sum of GTIs [s]
date	2014-12-10T05:55:30	Date and time of file creation	ontime3	9466.3969302177	Sum of GTIs [s]
revision	2	Processing version of data	ontime6	9469.579030633	Sum of GTIs [s]
			ontime7	9469.6200706363	Sum of GTIs [s]
			ontime8	9469.4969506264	Sum of GTIs [s]
			l1events	221809	Number of level 1 events

2.1.4 Events

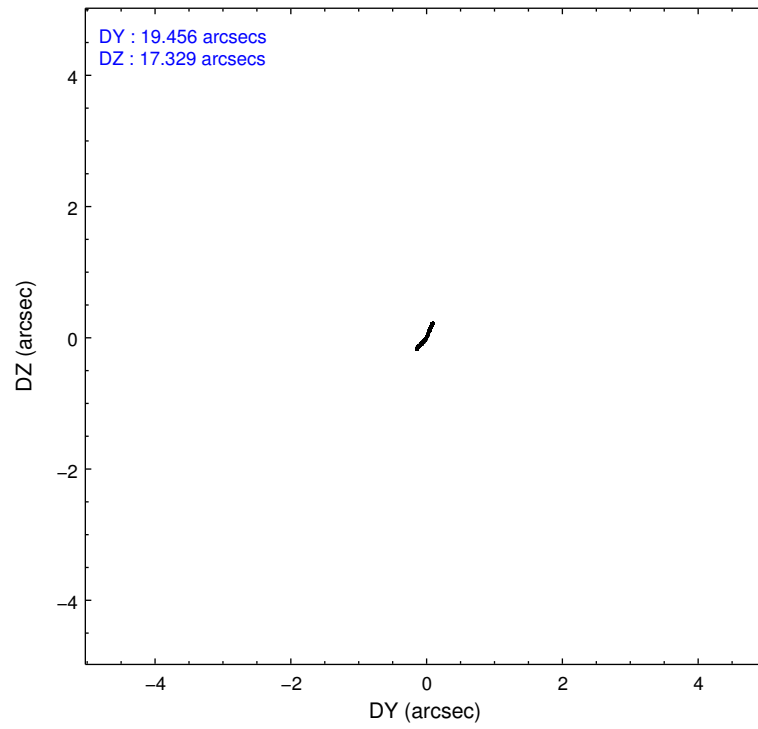
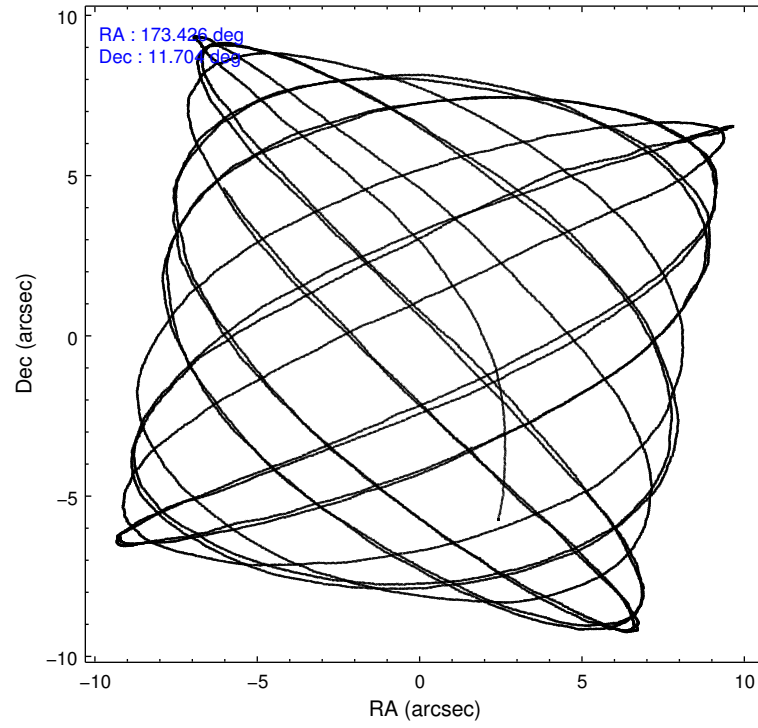
	ccd 2	ccd 3	ccd 6	ccd 7	ccd 8
level 1 events	38237	39913	40513	49407	53739
rejected events	33689	35226	35484	26726	38513
rejected %	88%	88%	87%	54%	71%

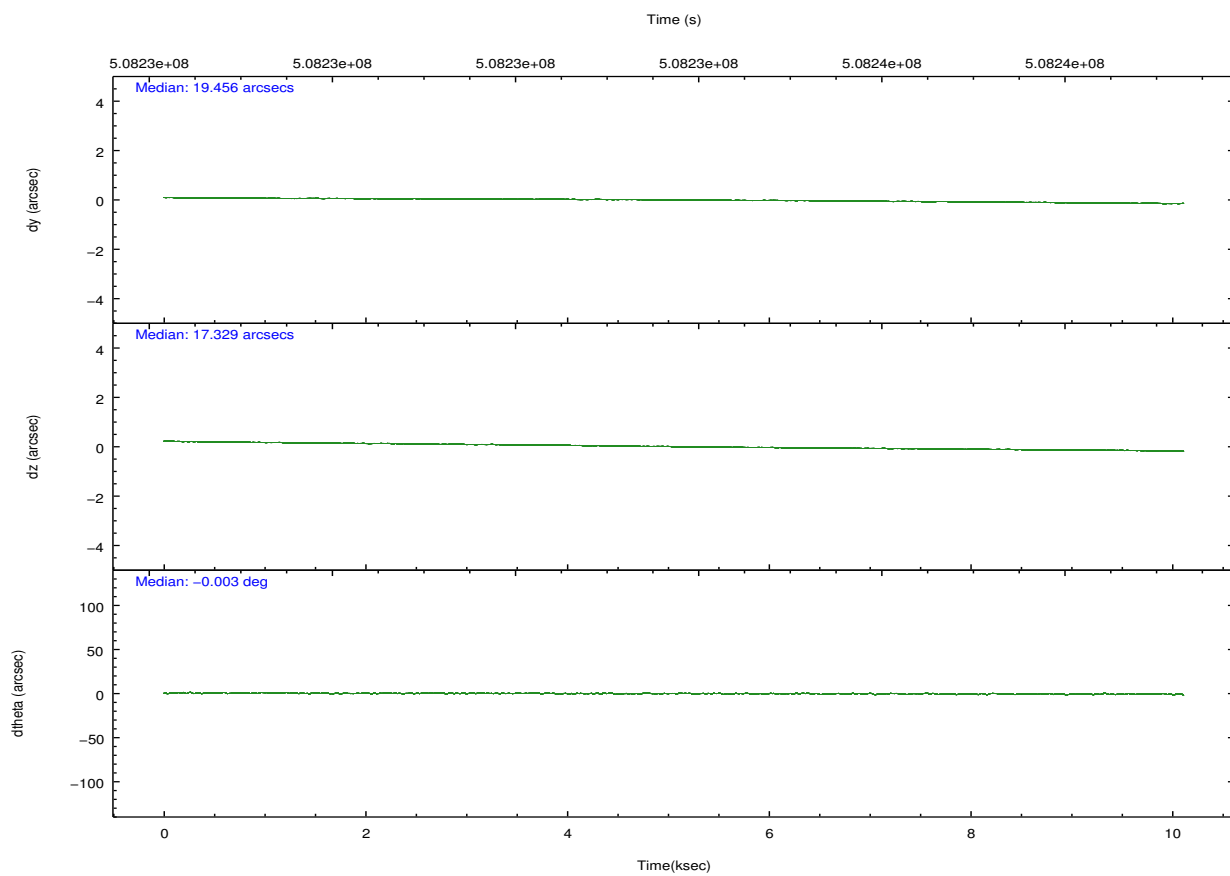
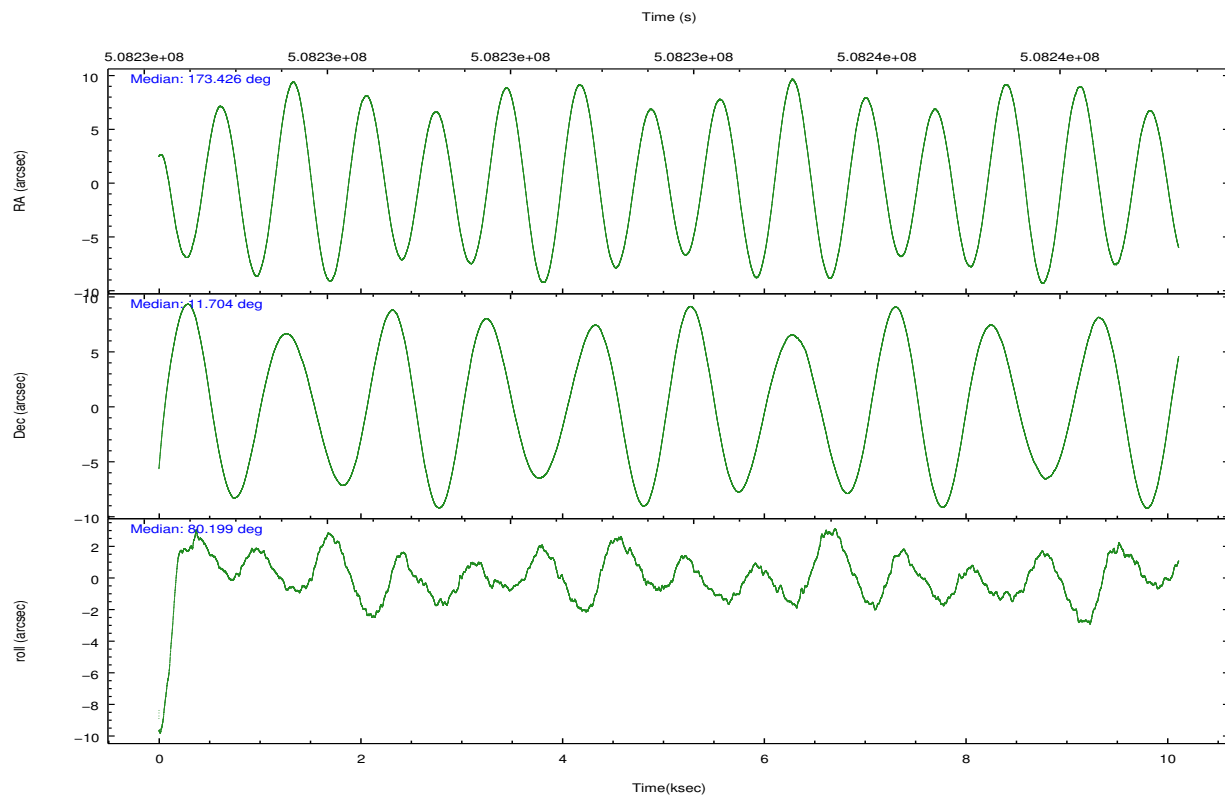
	ccd 2	ccd 3	ccd 6	ccd 7	ccd 8
grade 0 events	1649	1805	1763	2206	4335
	4%	4%	4%	4%	8%
grade 1 events	18	25	22	63	44
	0%	0%	0%	0%	0%
grade 2 events	1150	1035	1129	4875	3559
	3%	2%	2%	9%	6%
grade 3 events	459	450	524	1849	1647
	1%	1%	1%	3%	3%
grade 4 events	474	513	480	1900	1573
	1%	1%	1%	3%	2%
grade 5 events	1484	1896	2032	5133	2977
	3%	4%	5%	10%	5%
grade 6 events	818	889	1137	11860	4113
	2%	2%	2%	24%	7%
grade 7 events	32185	33300	33426	21521	35491
	84%	83%	82%	43%	66%

2.2 Compared Parameters

Parameter	Planned	Actual	Parameter	Planned	Actual
Instrument	ACIS	ACIS	Obspar format version number	7	7
Detector	ACIS-23678	ACIS-23678	Obspar file type	PREDICTED	ACTUAL
Grating	NONE	NONE	Obspar update status	NONE	UPDATED
Data mode	VFAINT	VFAINT	CCD I0 on	N	N
Observation mode	POINTING	POINTING	CCD I1 on	N	N
[deg] Pointing RA	173.435639	173.425611886341	CCD I2 on	O1	Y
[deg] Pointing Dec	11.678230	11.70376026121912	CCD I3 on	O2	Y
[deg] Pointing Roll	80.052647	80.21130679060006	CCD S0 on	N	N
[mm] SIM focus pos	-0.684267	-0.6828225247311905	CCD S1 on	N	N
[mm] SIM defocus	0	0.001444936568705701	CCD S2 on	Y	Y
[mm] SIM translation stage pos	-190.132523	-190.1425803651734	CCD S3 on	Y	Y
[mm] SIM translation stage offset	0	0.01005778216563158	CCD S4 on	Y	Y
[s] Observation start time (MET)	508229381.184000	508228178.82574	CCD S5 on	N	N
Observation start date	2014-02-08T06:48:34	2014-02-08T06:29:38	Number of optional ACIS chips dropped	0	0
[s] Observation end time (MET)	508238781.184000	508239160.16384	On-chip summing requested	N	N
Observation end date	2014-02-08T09:25:14	2014-02-08T09:32:40	Subarray requested	NONE	NONE
Read mode	TIMED	TIMED	Alternating exposures requested	N	N
			[s] Primary exposure time	0.000000	3.1

2.3 Aspect



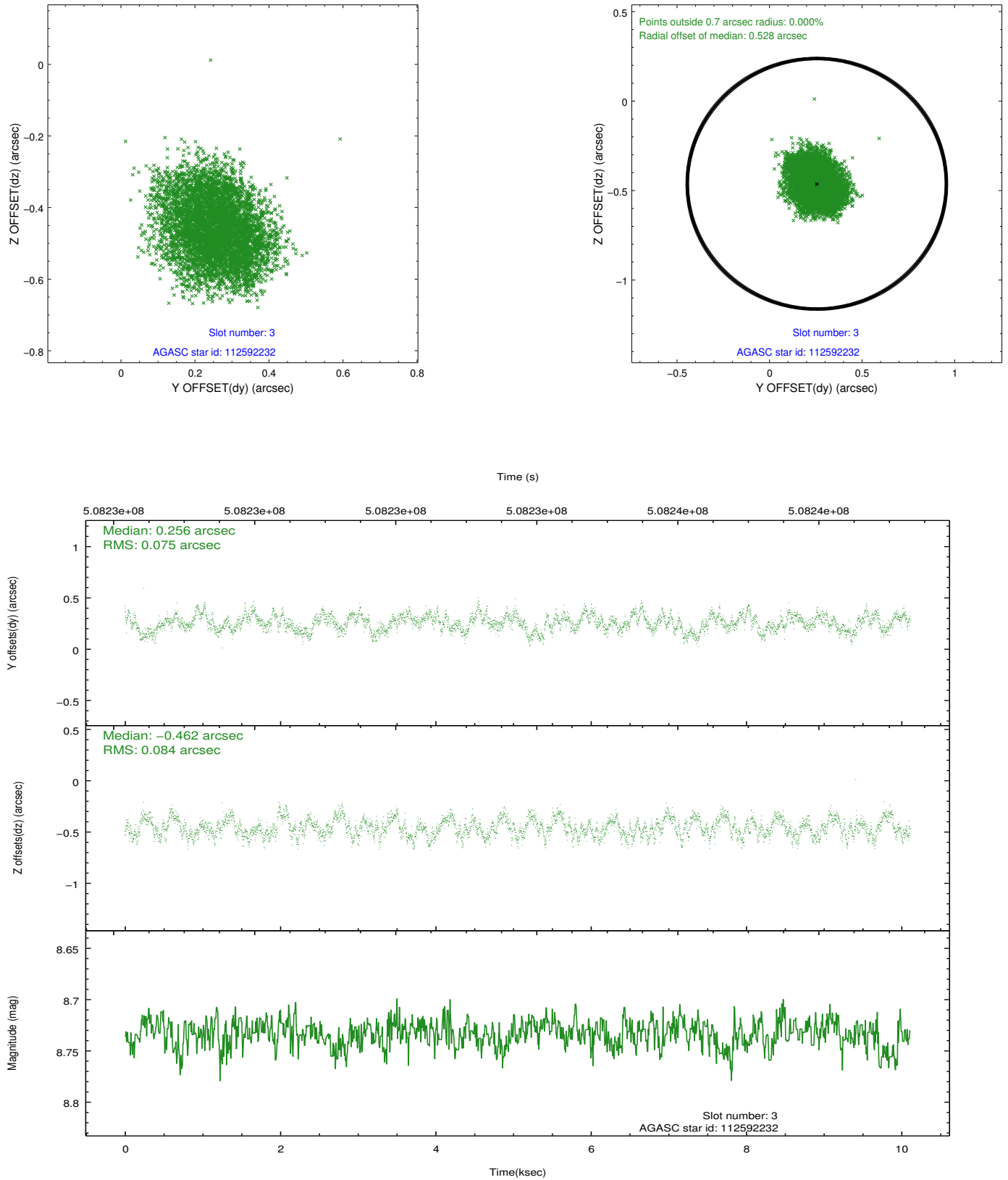


Slot Statistics

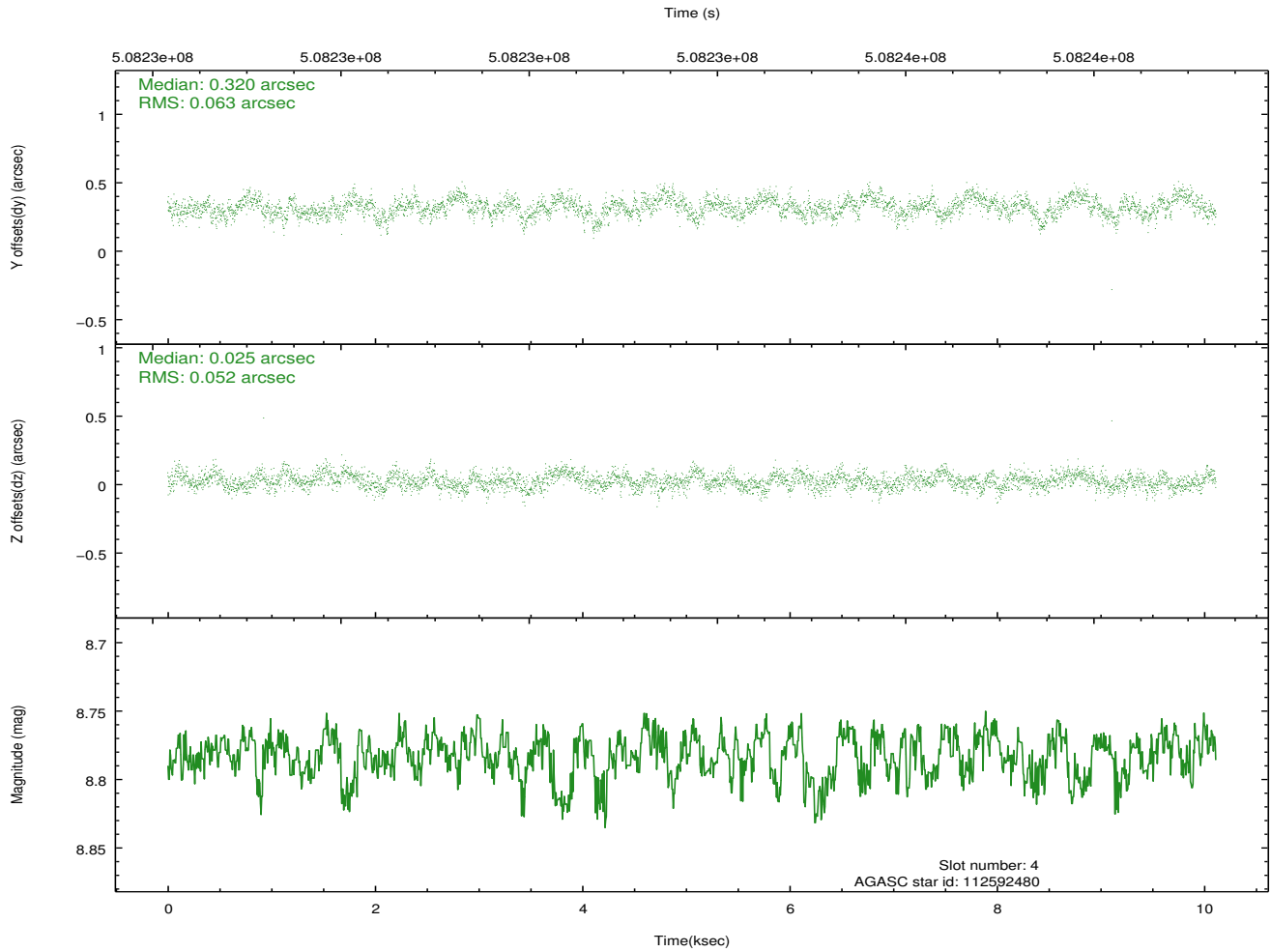
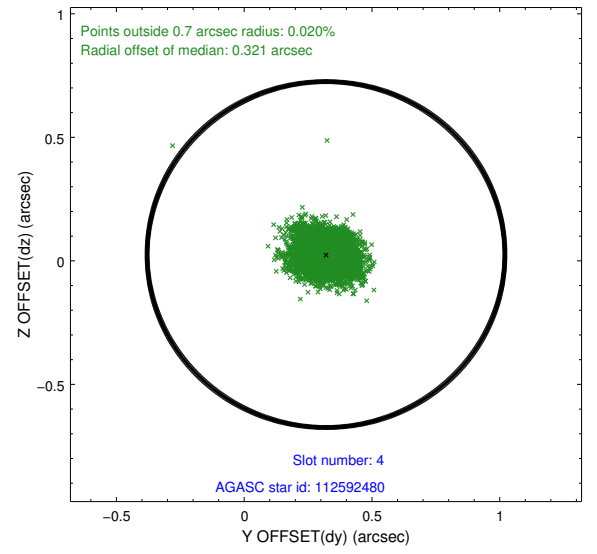
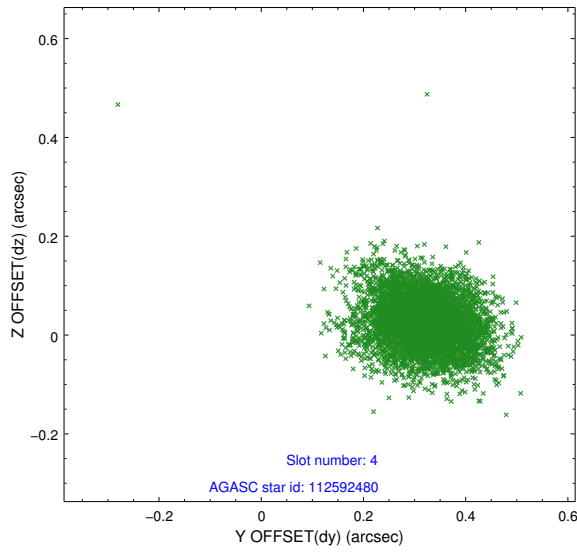
slot	status	used	id	mag	n_pts	med_dy	med_dz	dr1	dr2	ra	dec	mean_y	mean_z
0	FID		ACIS-S-2	7.05	2467	-0.119	-0.063	0.007	0.012	0.000000	0.000000	-772.69	-1738.78
1	FID		ACIS-S-4	7.14	2467	0.301	0.075	0.005	0.010	0.000000	0.000000	2140.81	169.23
2	FID		ACIS-S-5	7.17	2467	-0.213	-0.003	0.007	0.011	0.000000	0.000000	-1824.92	163.51
3	GUIDE	used	112592232	8.73	4931	0.256	-0.462	0.124	0.186	172.741288	11.523686	-968.82	2317.86
4	GUIDE	used	112592480	8.78	4931	0.320	0.025	0.086	0.142	172.890418	11.121582	-2305.03	1552.06
5	GUIDE	used	112592584	8.57	4929	-0.242	0.969	0.093	0.150	173.098096	12.204464	1660.76	1499.26
6	GUIDE	used	112725080	8.22	4934	-0.139	-0.278	0.088	0.147	174.160740	12.177260	2214.29	-2200.91
7	GUIDE	used	112726152	8.00	4933	-0.197	-0.261	0.063	0.097	173.707978	11.825303	688.41	-853.84

2.4 Star Slots

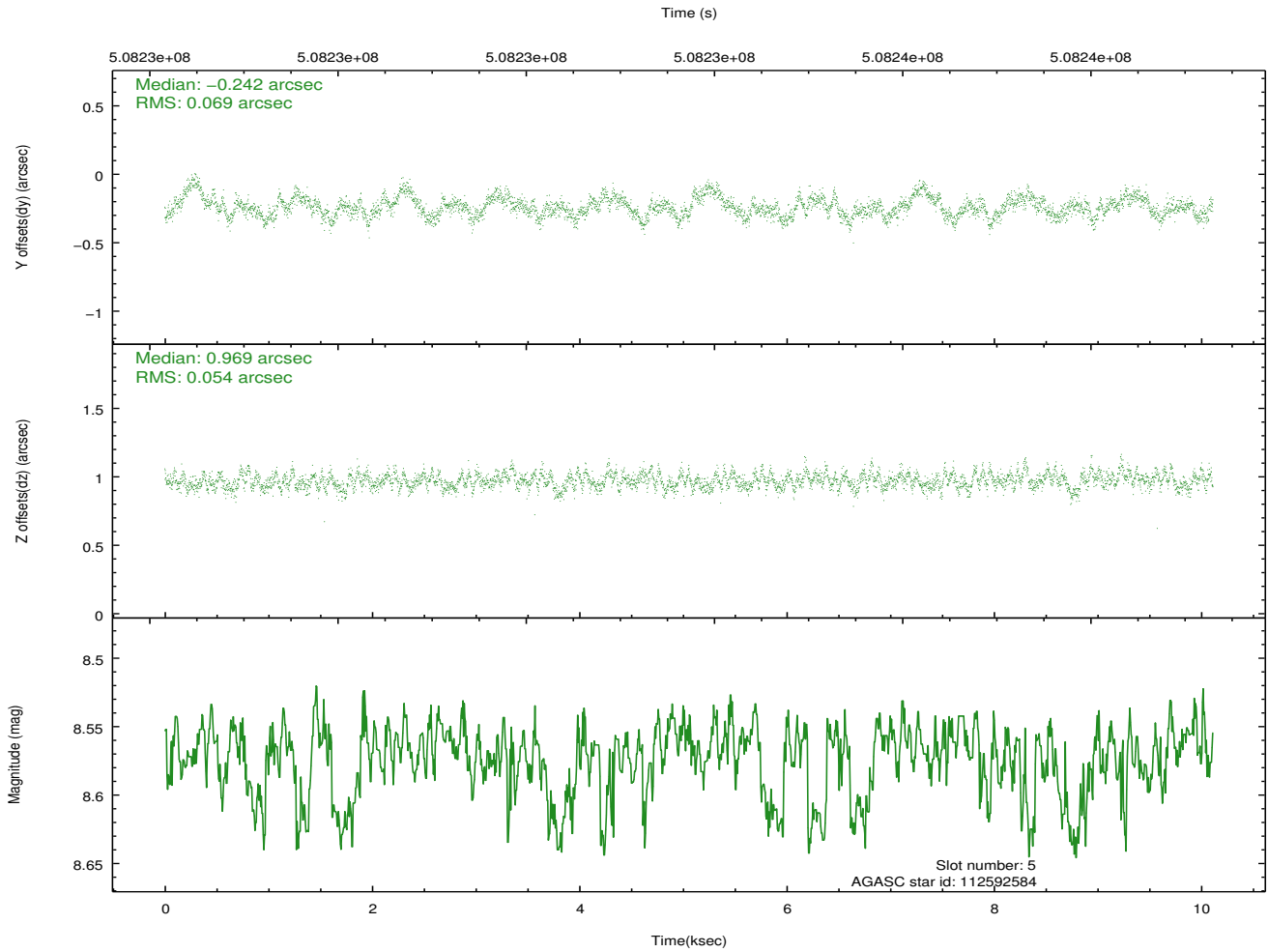
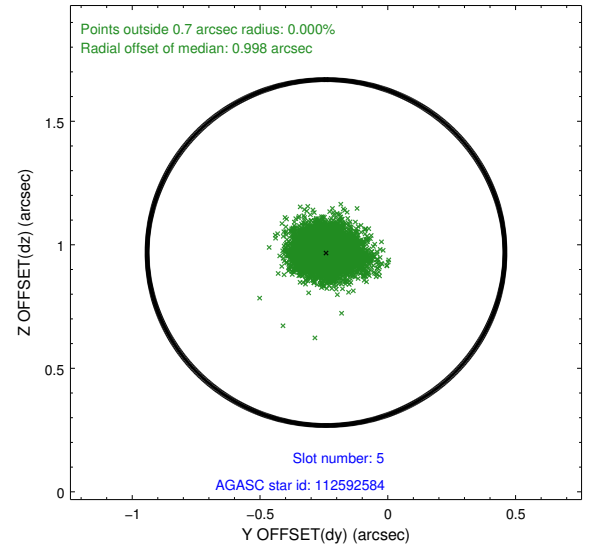
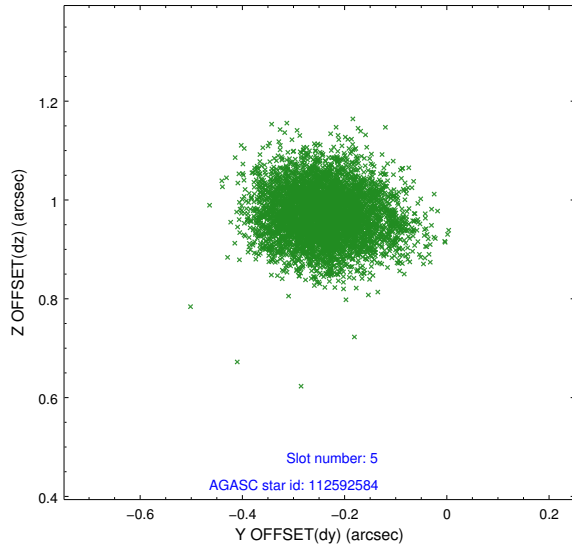
2.4.1 Slot 3



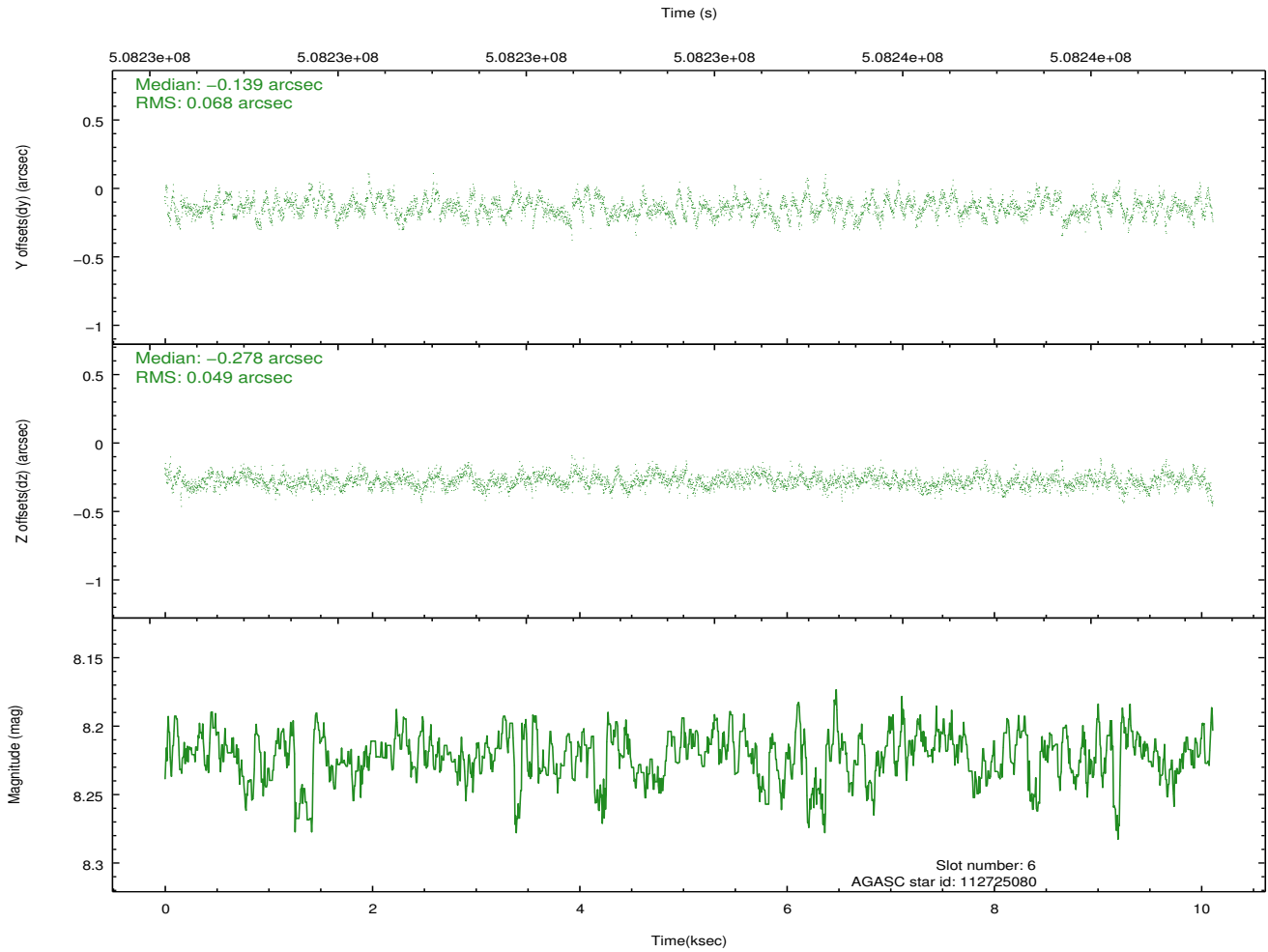
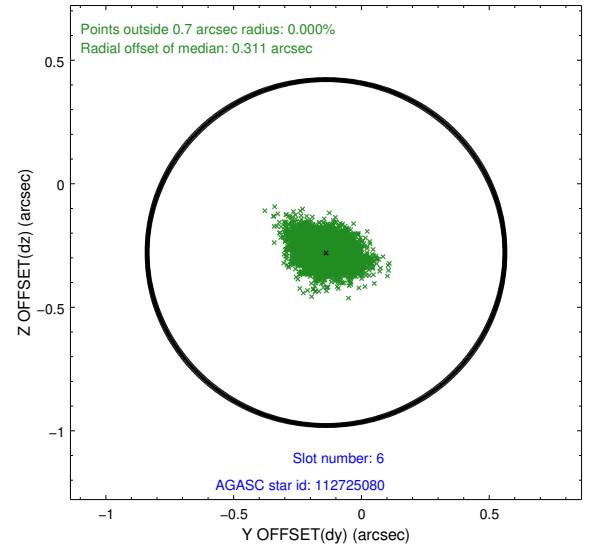
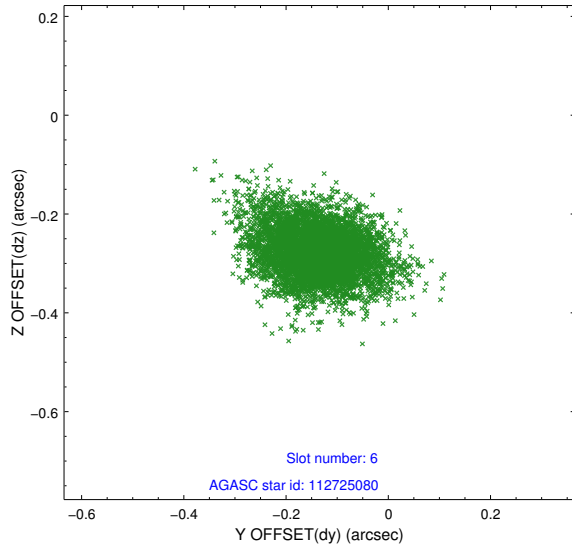
2.4.2 Slot 4



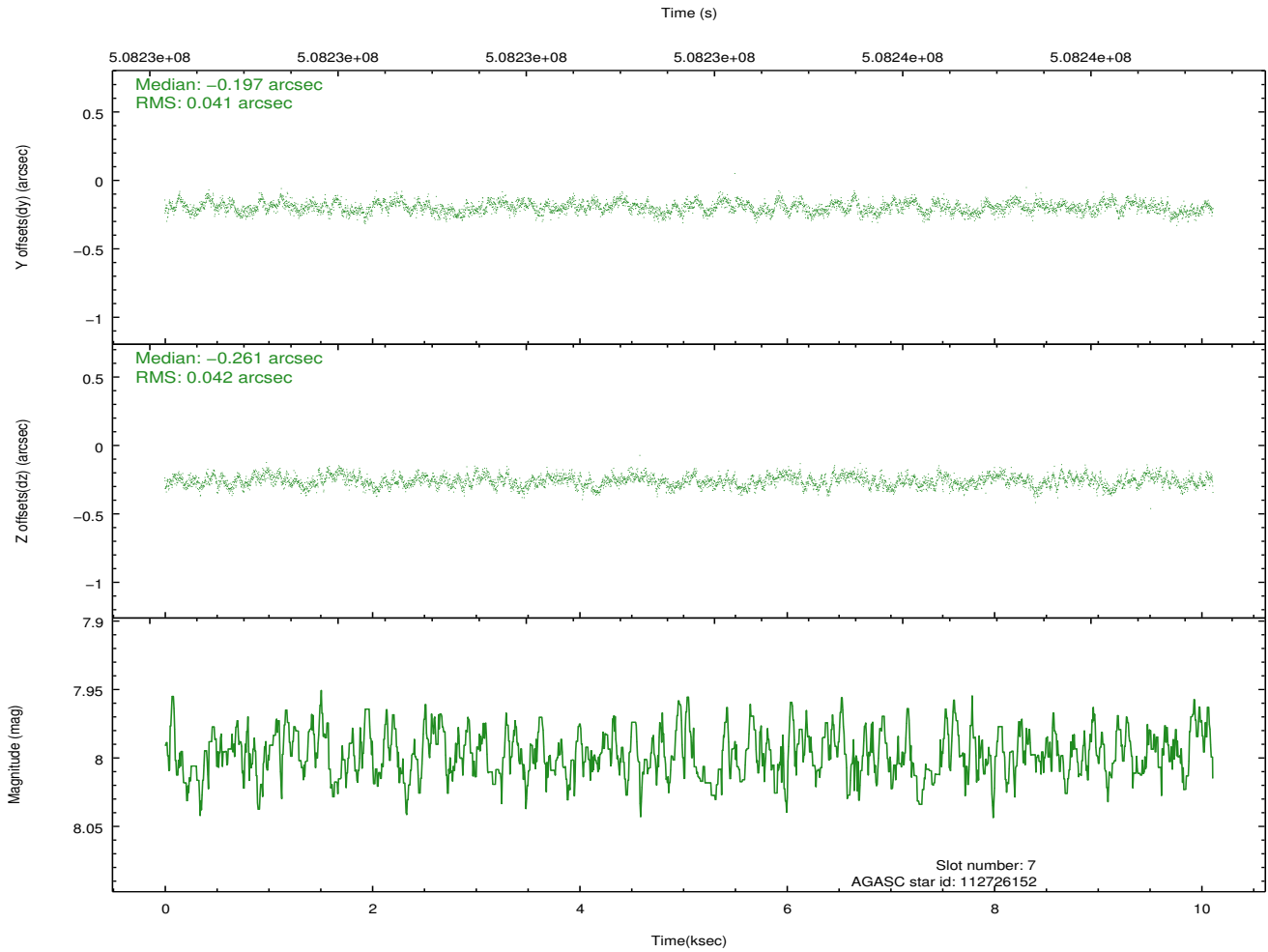
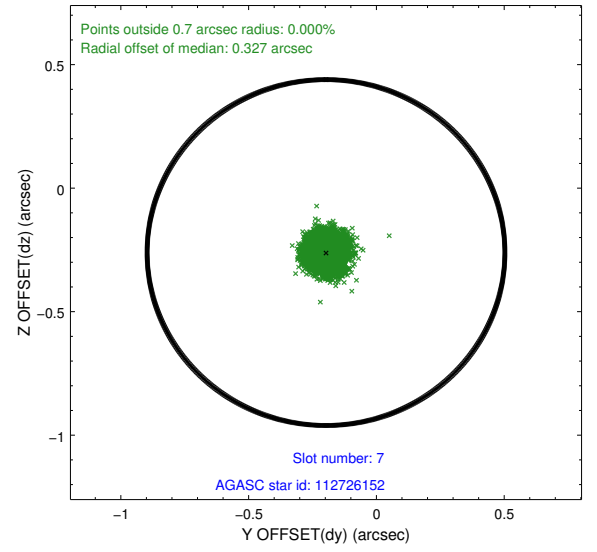
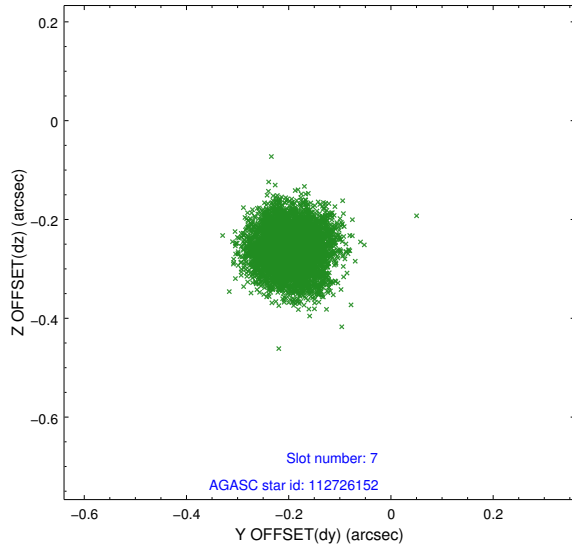
2.4.3 Slot 5



2.4.4 Slot 6

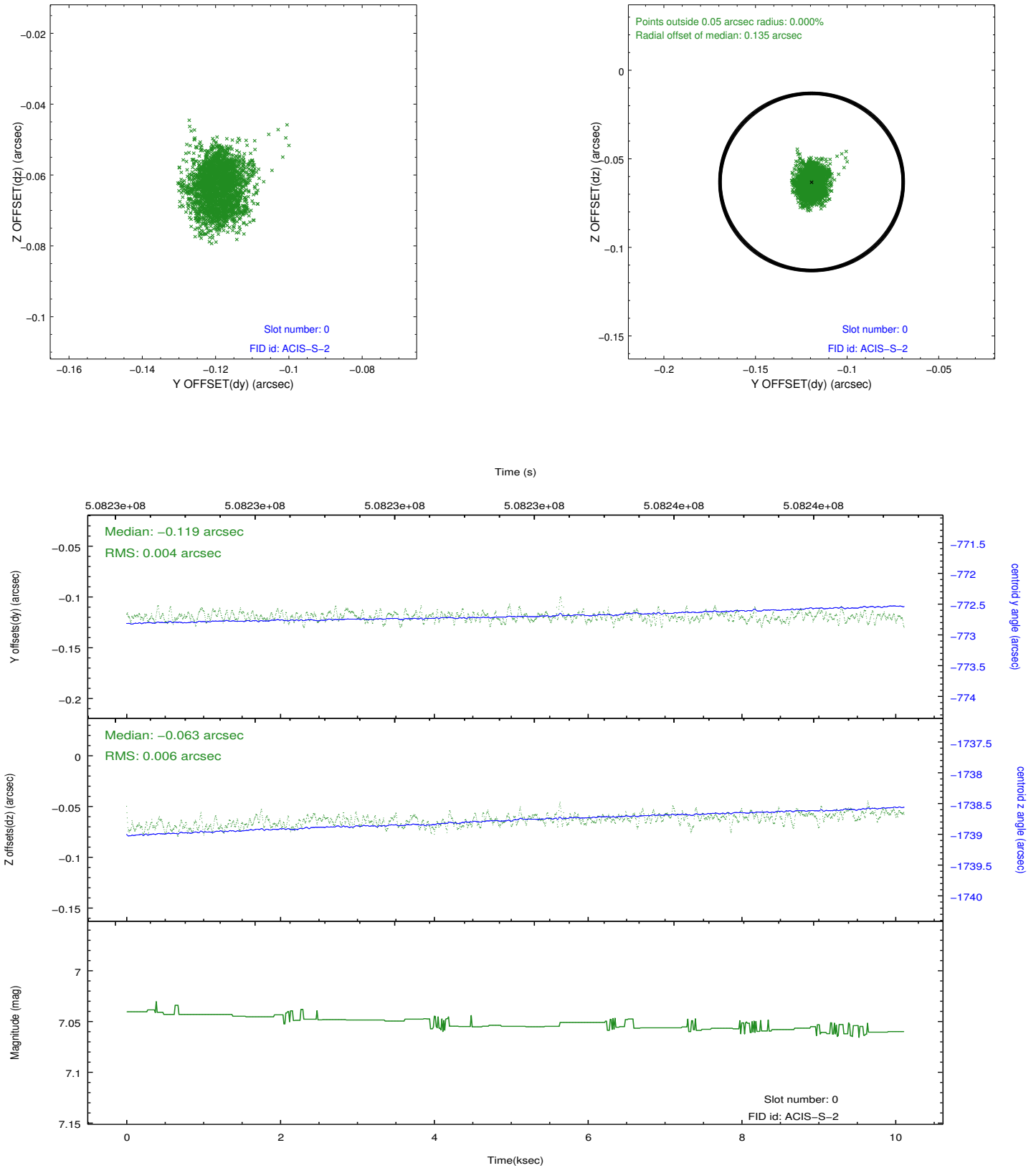


2.4.5 Slot 7

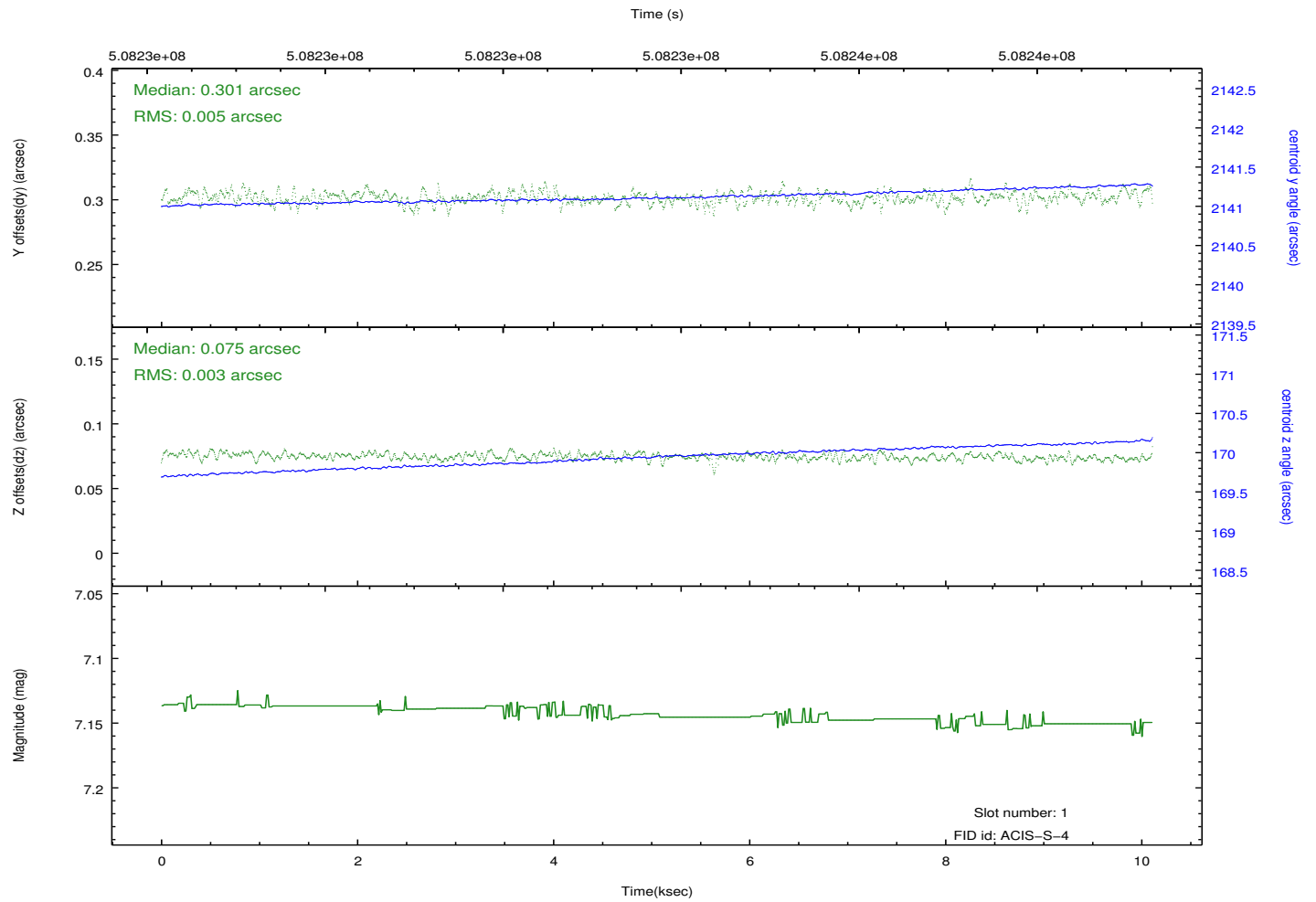
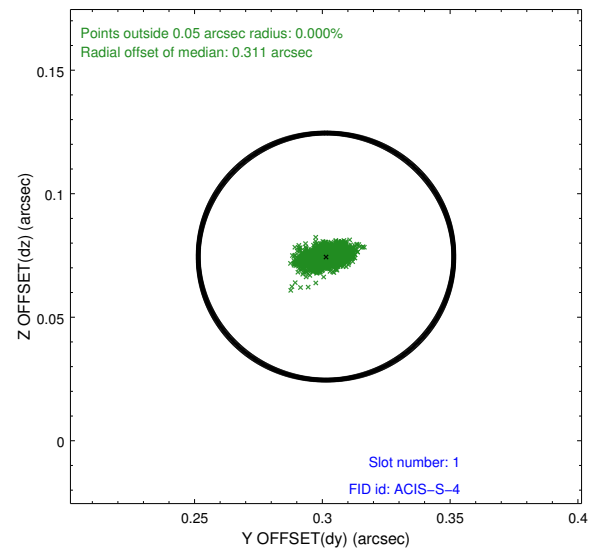
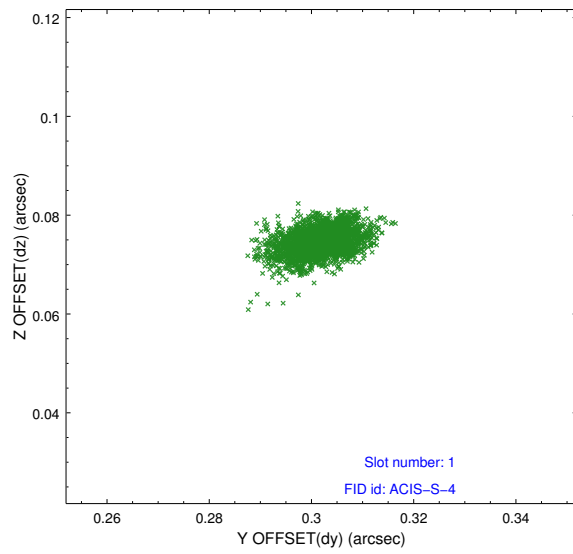


2.5 FID Slots

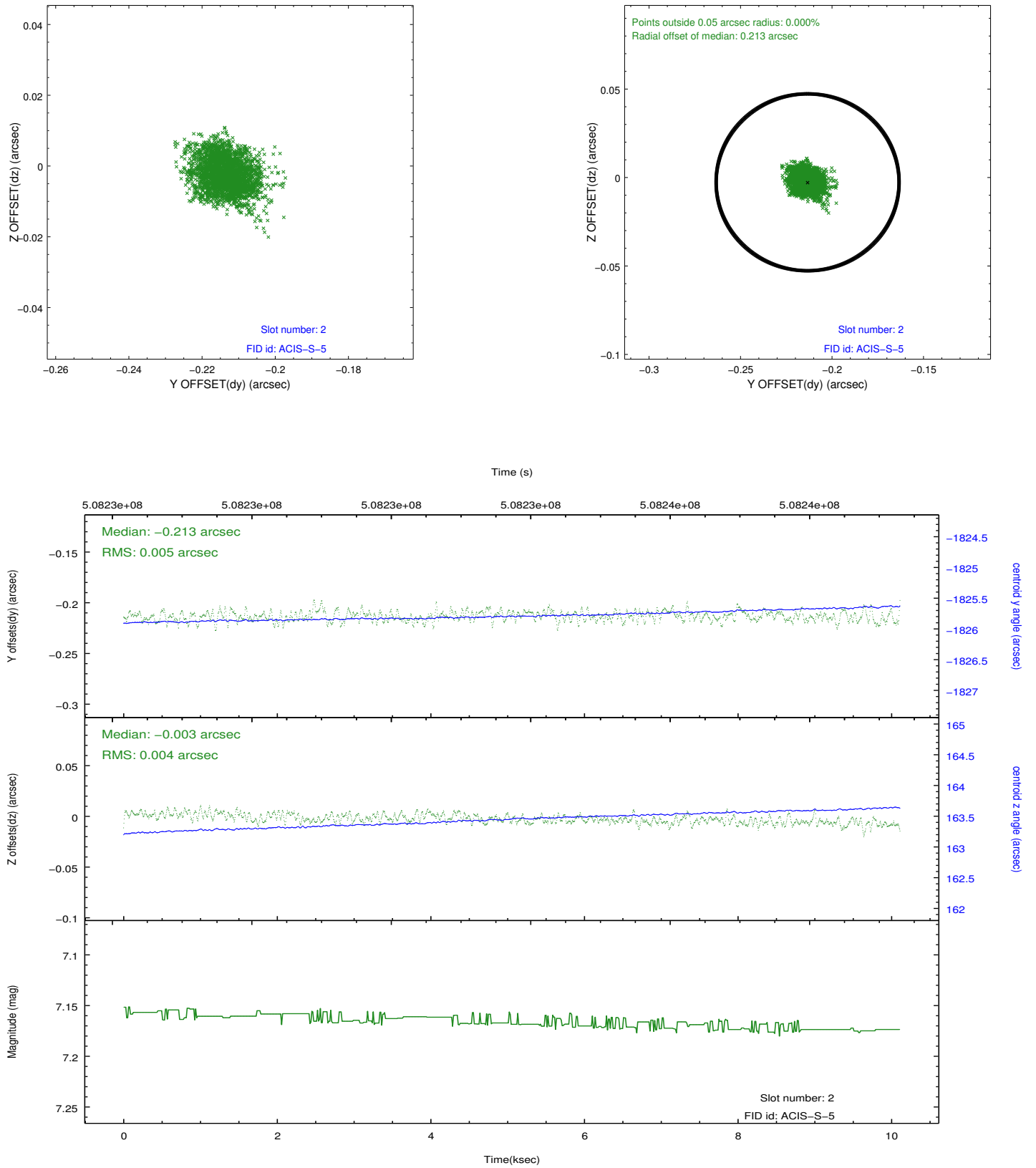
2.5.1 Slot 0



2.5.2 Slot 1



2.5.3 Slot 2



A Summary

A.1 Status

V&V Scientist	Jen Lauer
V&V Date (YYYY-MM-DD)	2014.12.17
V&V Edition	1
V&V Disposition and Status	OK
V&V Charge Time	9.4696200706363

A.2 Comments

Observation coordinated with Hobby-Eberly Telescope.

=====

These data have been reprocessed with new aspect alignment calibration files that correct small mean offsets (up to 0.4 arcsecs) and improve overall astrometric accuracy. The new calibration was determined using data from the time period being reprocessed and was performed using cross-correlation of X-ray sources with radio and optical counterparts.