

V&V Reference Report

L2 ASCDS Version : 8.4.5

Observation 1432 - L2 Version 4
Chandra X-Ray Center

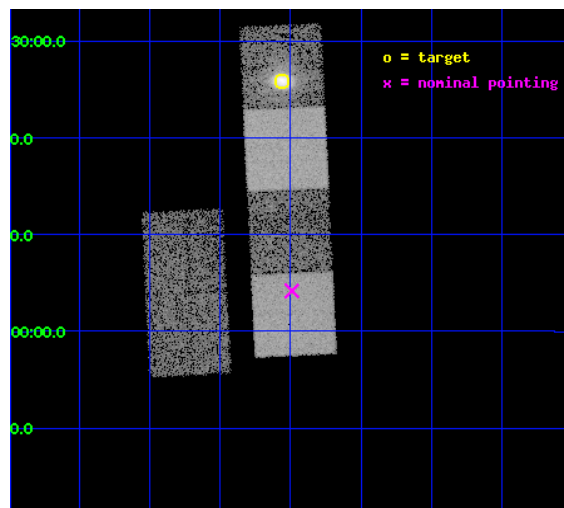
L2 Processing Date : Aug 23 2012

Contents

1	Front	2
2	OBI	3
2.1	OBI	3
2.1.1	Images	3
2.1.2	Bias	3
2.1.3	Parameters	4
2.1.4	Events	4
2.2	Compared Parameters	5
2.3	Aspect	6
2.4	Star Slots	9
2.4.1	Slot 3	9
2.4.2	Slot 4	10
2.4.3	Slot 5	11
2.4.4	Slot 6	12
2.4.5	Slot 7	13
2.5	FID Slots	14
2.5.1	Slot 0	14
2.5.2	Slot 1	15
2.5.3	Slot 2	16
A	Summary	17
A.1	Status	17
A.2	Comments	17

1 Front

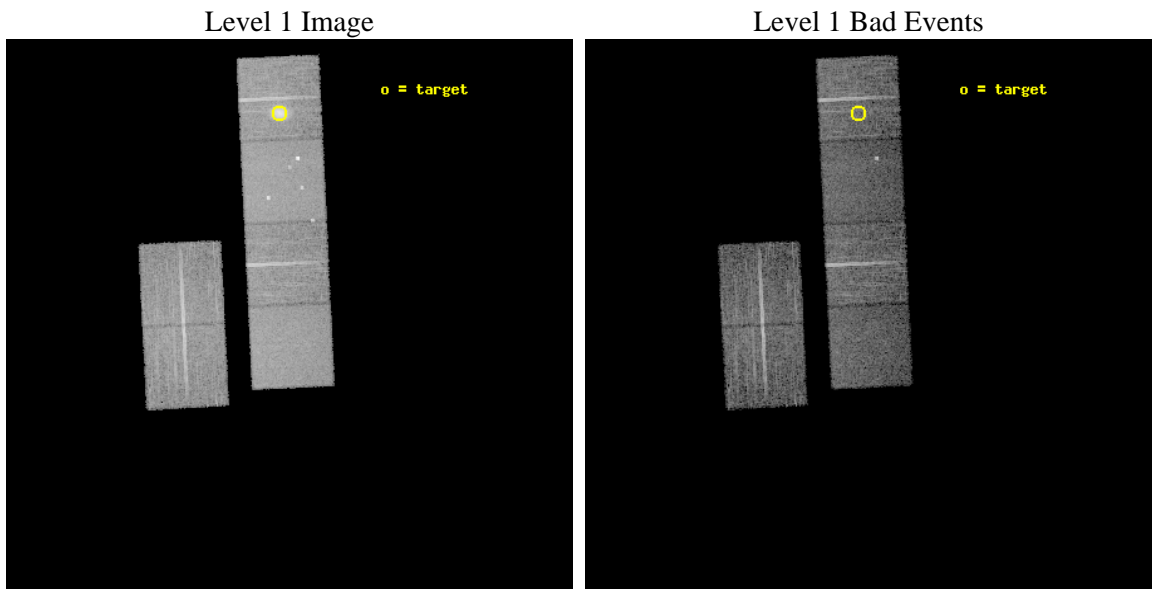
seq_num	580382	Sequence number
obs_id	1432	Observation id
title	ACIS CHIP RESPONSE TO A CONTINUUM SOURCE	Proposal title
observer	Dr. CXC Calibration	Principal investigator
object	G21.5-0.9 [Chip S0, T=120, Offsets=22,0,0]	Source name
dtcycle	0	
cycle	P	events from which exps? Prim/Second/Both
ra_targ	278.389583	Observer's specified target RA [deg]
dec_targ	-10.568528	Observer's specified target Dec [deg]
ra_nom	278.37279195714	Nominal RA [deg]
dec_nom	-10.930443424255	Nominal Dec [deg]
roll_nom	87.253600229654	Nominal Roll [deg]
revision	4	Processing version of data
ontime	9993.6000092924	Sum of GTIs [s]
livetime	9867.0550285512	Livetime [s]
ontime2	9993.6000092924	Sum of GTIs [s]
ontime3	9993.6000092924	Sum of GTIs [s]
ontime4	9993.6000092924	Sum of GTIs [s]
ontime5	9993.6000092924	Sum of GTIs [s]
ontime6	9993.6000092924	Sum of GTIs [s]
ontime7	9993.6000092924	Sum of GTIs [s]
l2events	118573	Number of level 2 events



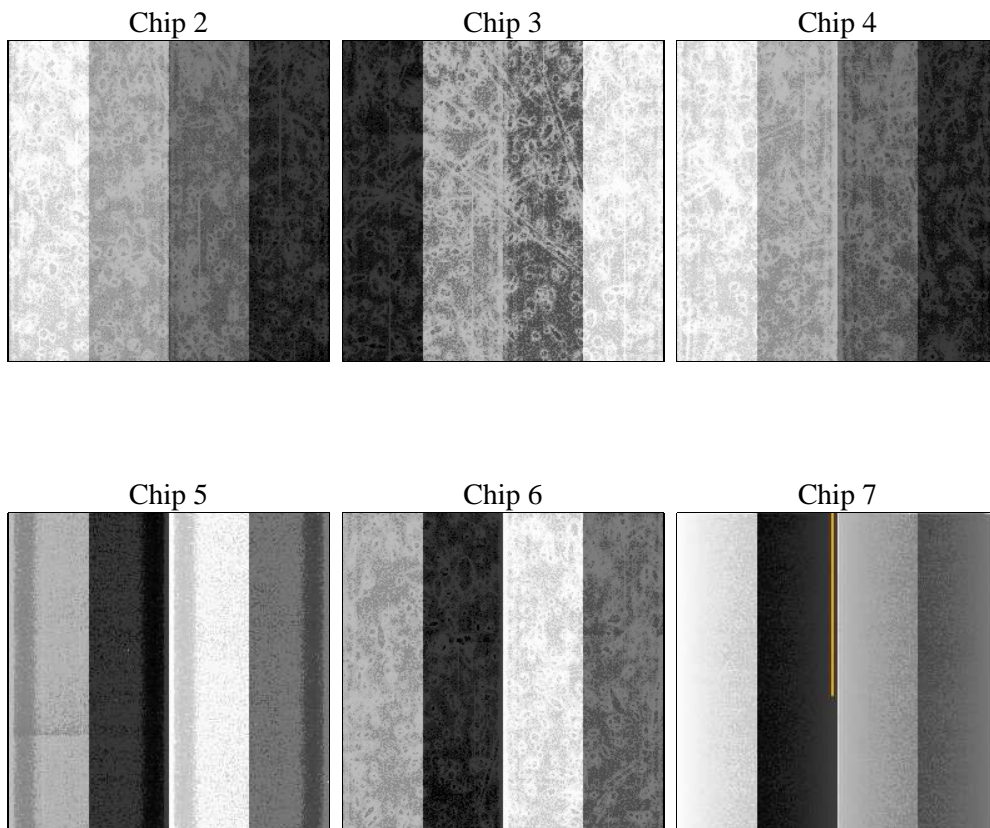
2 OBI

2.1 OBI

2.1.1 Images



2.1.2 Bias



2.1.3 Parameters

obi_num	0	Obi number	sched_exp_time	10942.451000	[s] Scheduled observation exposure time
ascdsver	8.4.5	Processing system revision	ontime	9993.6000092924	Sum of GTIs [s]
caldsver	4.5.1.1	 	ontime2	9993.6000092924	Sum of GTIs [s]
date	2012-08-23T19:38:35	Date and time of file creation	ontime3	9993.6000092924	Sum of GTIs [s]
revision	4	Processing version of data	ontime4	9993.6000092924	Sum of GTIs [s]
			ontime5	9993.6000092924	Sum of GTIs [s]
			ontime6	9993.6000092924	Sum of GTIs [s]
			ontime7	9993.6000092924	Sum of GTIs [s]
			l1events	501036	Number of level 1 events

2.1.4 Events

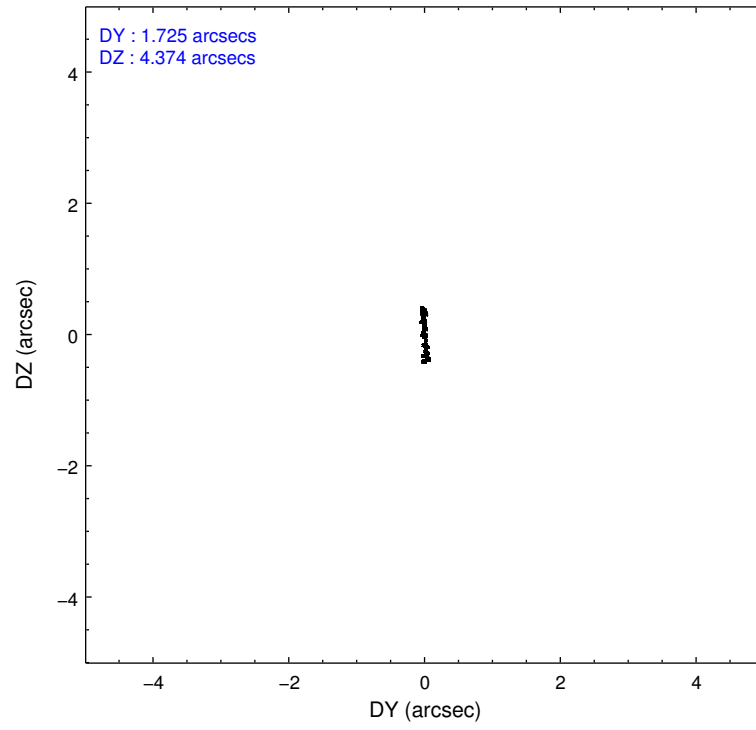
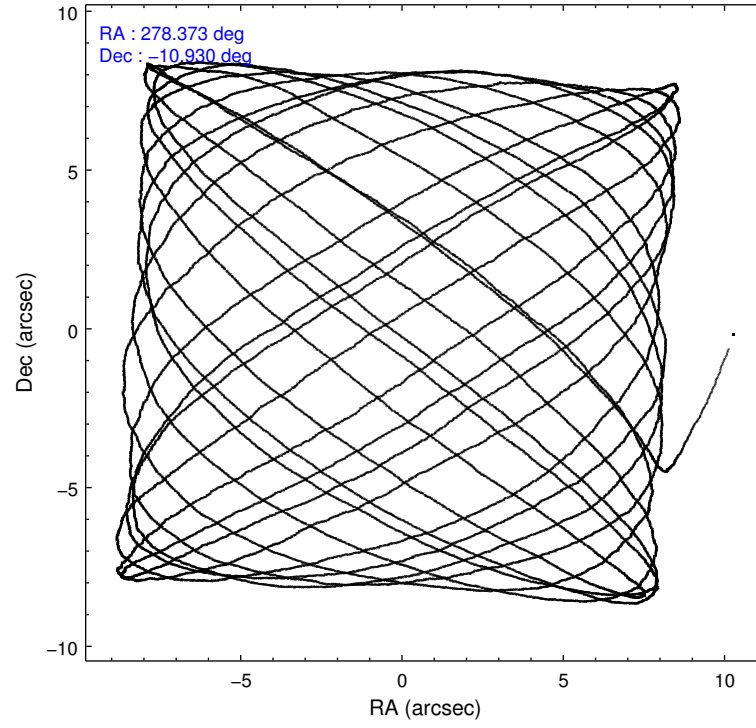
	ccd 2	ccd 3	ccd 4	ccd 5	ccd 6	ccd 7		ccd 2	ccd 3	ccd 4	ccd 5	ccd 6	ccd 7
level 1 events	73242	72543	99174	97023	74362	84692	grade 0 events	3210	3364	16751	6936	3385	3592
rejected events	65748	64983	73500	50042	66423	48432		4%	4%	16%	7%	4%	4%
rejected %	89%	89%	74%	51%	89%	57%	grade 1 events	34	33	112	299	38	80
								0%	0%	0%	0%	0%	0%
							grade 2 events	1534	1406	4130	13657	1461	7211
								2%	1%	4%	14%	1%	8%
							grade 3 events	744	759	1449	2213	836	3400
								1%	1%	1%	2%	1%	4%
							grade 4 events	729	763	1429	2124	774	3355
								0%	1%	1%	2%	1%	3%
							grade 5 events	2097	2366	2358	7538	2638	8109
								2%	3%	2%	7%	3%	9%
							grade 6 events	1280	1272	1921	22066	1487	18719
								1%	1%	1%	22%	1%	22%
							grade 7 events	63614	62580	71024	42190	63743	40226
								86%	86%	71%	43%	85%	47%

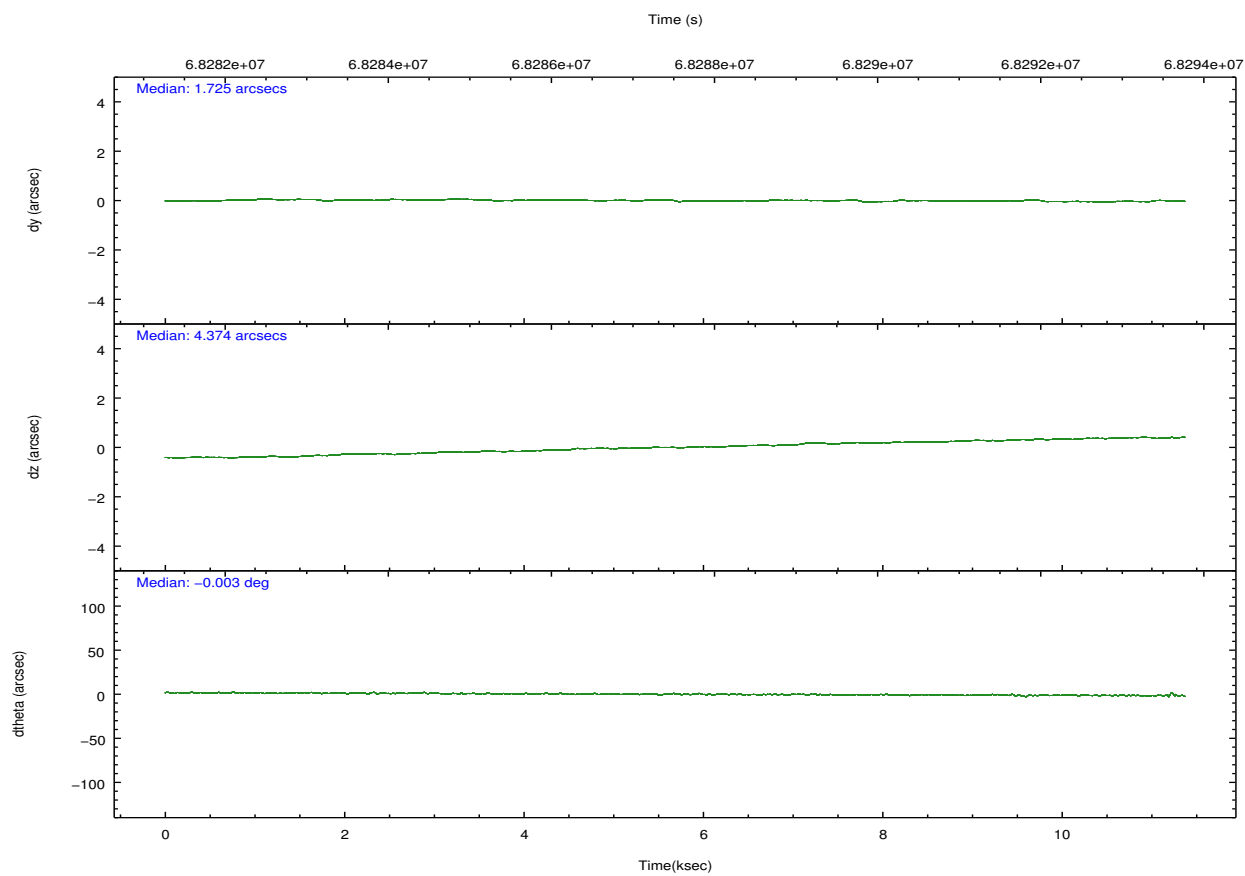
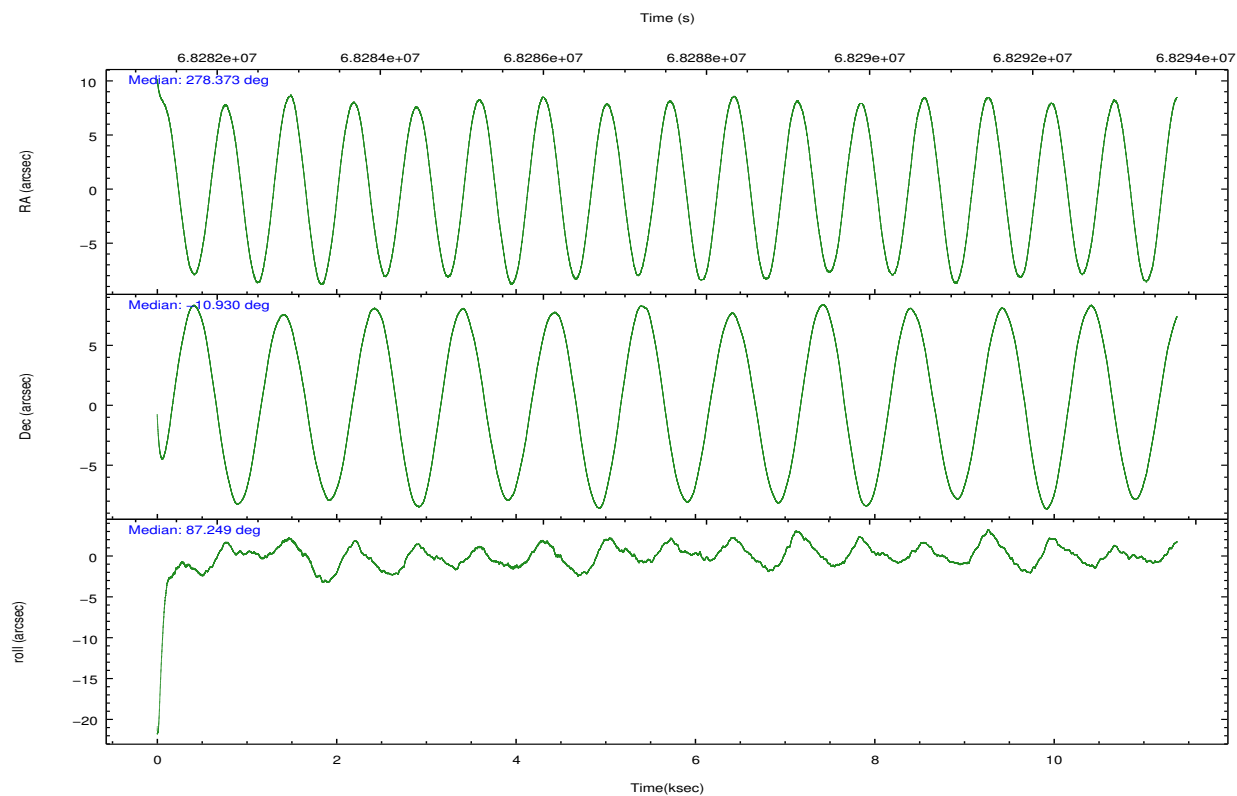
2.2 Compared Parameters

Parameter	Planned	Actual
Instrument	ACIS	ACIS
Detector	ACIS-234567	ACIS-234567
Grating	NONE	NONE
Data mode	FAINT	FAINT
Observation mode	POINTING	POINTING
[deg] Pointing RA	278.385625	278.3727919571365
[deg] Pointing Dec	-10.954858	-10.93044342425524
[deg] Pointing Roll	87.099427	87.25360022965434
[mm] SIM focus pos	-0.684267	-0.6828225247311905
[mm] SIM defocus	0	0.001444936568705701
[mm] SIM translation stage pos	-190.132523	-190.1425803651734
[mm] SIM translation stage offset	0	0.01005778216563158
[s] Observation start time (MET)	68282258.184000	68280983.066338
Observation start date	2000-03-01T07:16:34	2000-03-01T06:56:23
[s] Observation end time (MET)	68293201.184000	68293704.854302
Observation end date	2000-03-01T10:18:57	2000-03-01T10:28:24
Read mode	TIMED	TIMED

Parameter	Planned	Actual
Obspar format version number	7	7
Obspar file type	PREDICTED	ACTUAL
Obspar update status	NONE	UPDATED
Number of optional ACIS chips dropped	0	0
On-chip summing requested	N	N
Subarray requested	NONE	NONE
Alternating exposures requested	N	N
[s] Primary exposure time	0.000000	3.2

2.3 Aspect



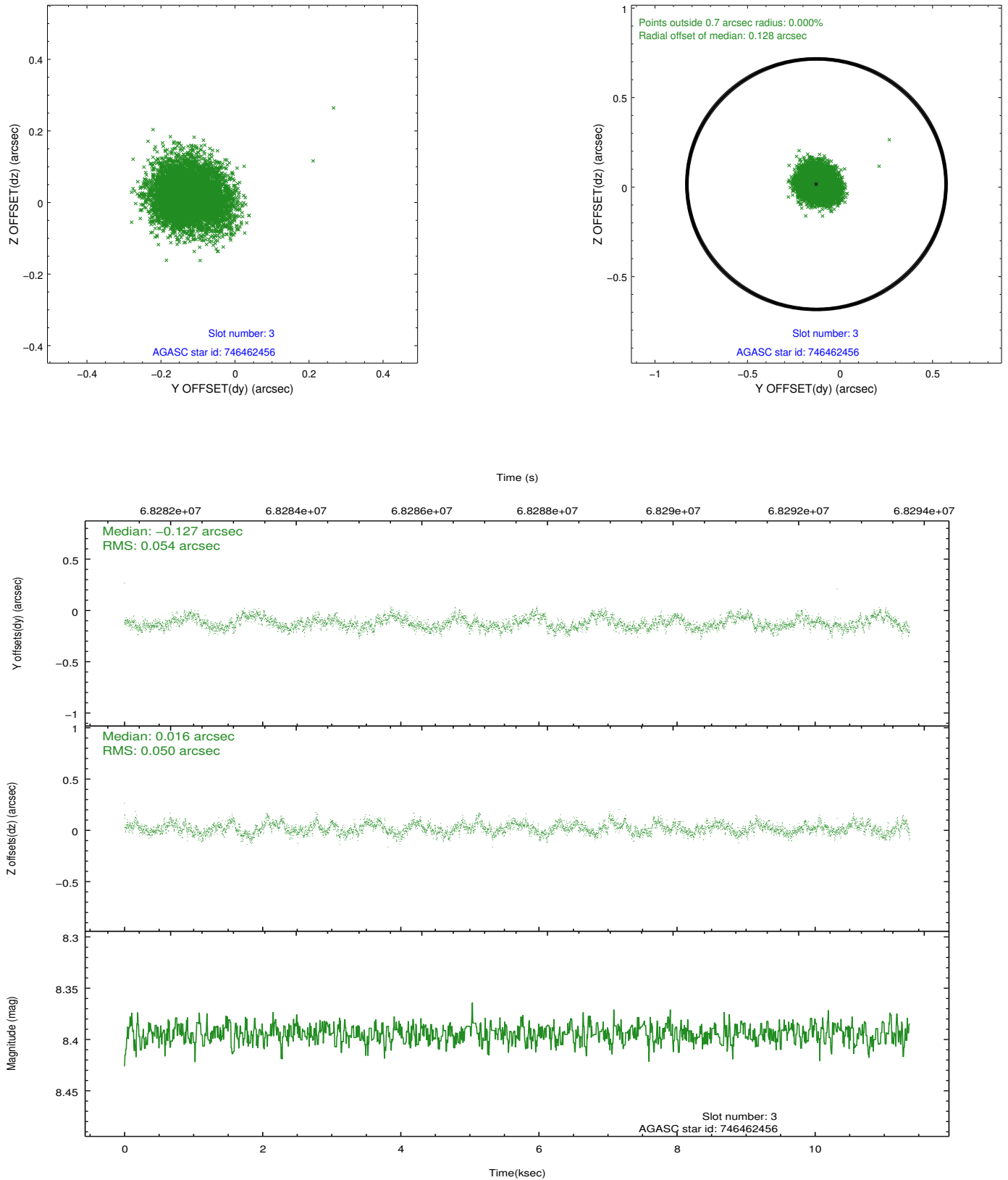


Slot Statistics

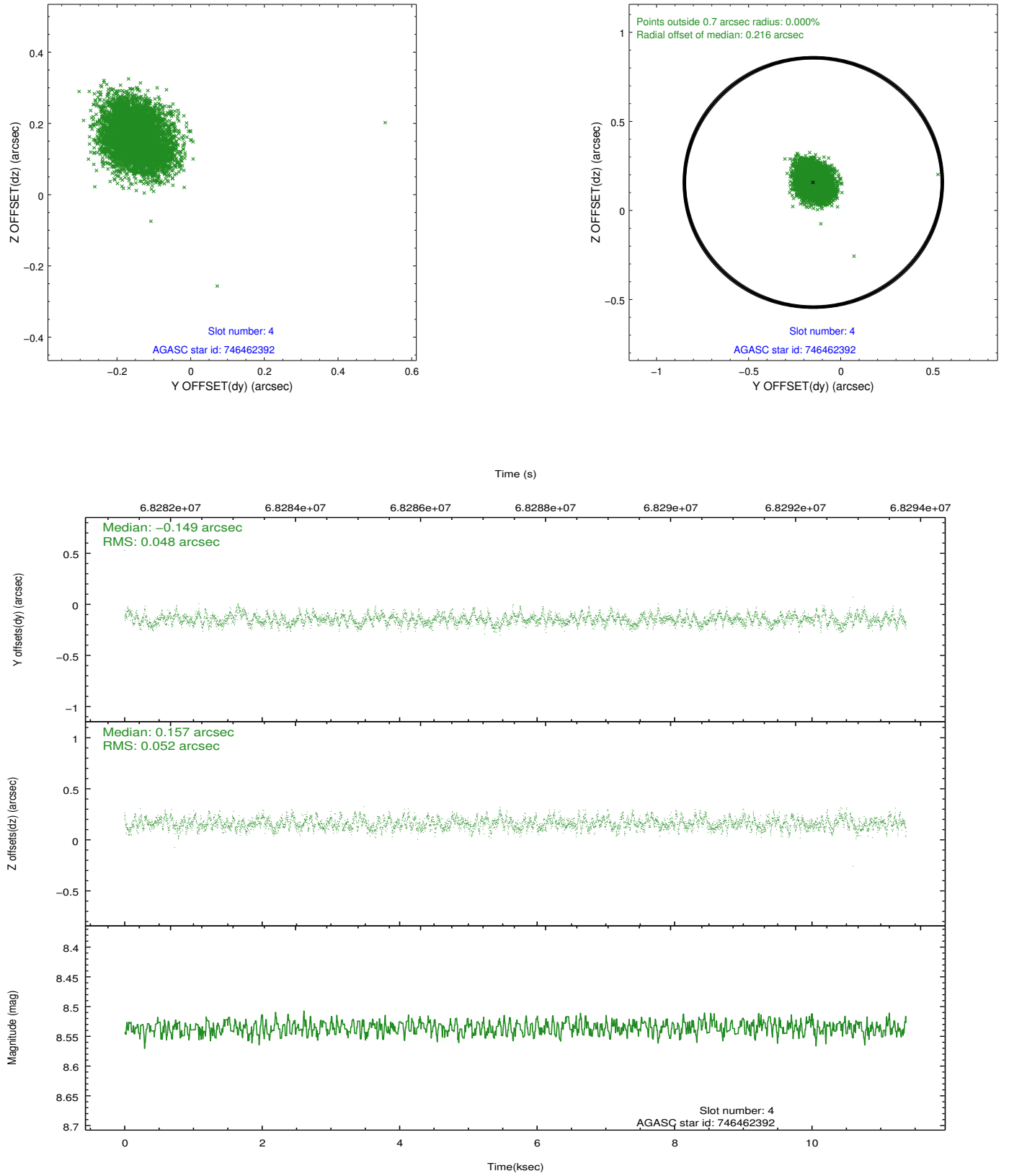
slot	status	id	mag	n_pts	med_dy	med_dz	dr1	dr2	ra	dec	mean_y	mean_z
0	FID	ACIS-S-2	7.11	2774	-0.018	-0.018	0.010	0.015	0.000000	0.000000	-754.37	-1725.42
1	FID	ACIS-S-4	7.21	2772	0.006	0.013	0.007	0.012	0.000000	0.000000	2158.75	182.59
2	FID	ACIS-S-5	7.23	2774	-0.020	0.014	0.009	0.015	0.000000	0.000000	-1806.61	176.83
3	GUIDE	746462456	8.39	5548	-0.127	0.016	0.080	0.125	278.652171	-10.530173	1573.68	-864.60
4	GUIDE	746462392	8.54	5546	-0.149	0.157	0.075	0.120	279.038421	-10.890715	344.72	-2293.07
5	GUIDE	746995400	9.51	5545	0.118	-0.173	0.102	0.159	278.078957	-11.289885	-1260.29	1019.67
6	GUIDE	746995688	9.72	5472	0.254	-0.143	0.101	0.166	278.253497	-11.597077	-2333.21	348.40
7	GUIDE	746461728	9.77	5542	-0.101	0.139	0.104	0.172	278.986921	-10.530755	1629.63	-2047.92

2.4 Star Slots

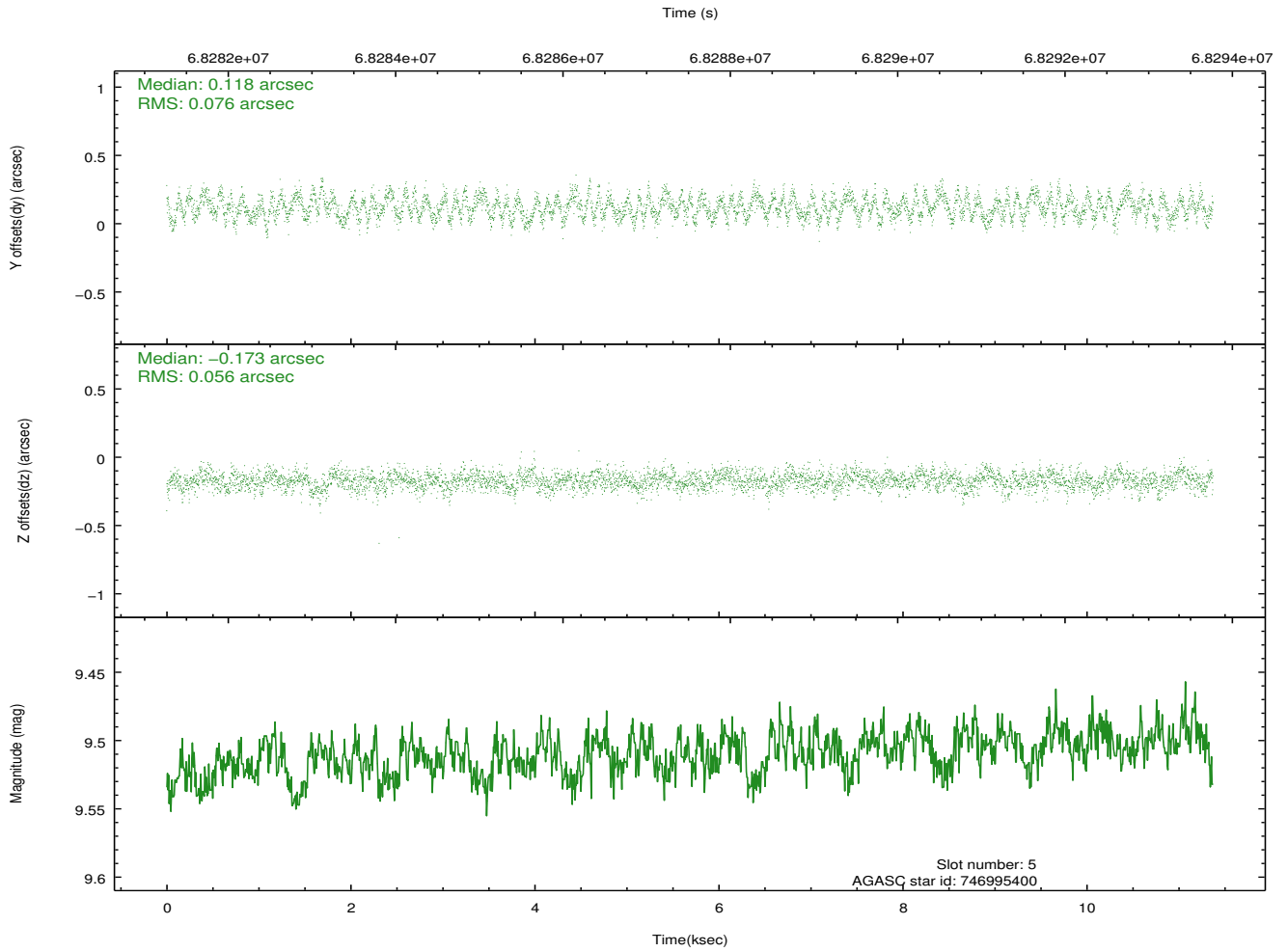
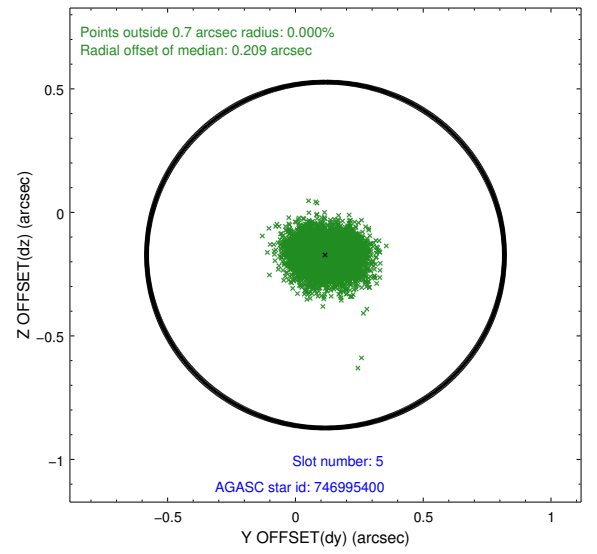
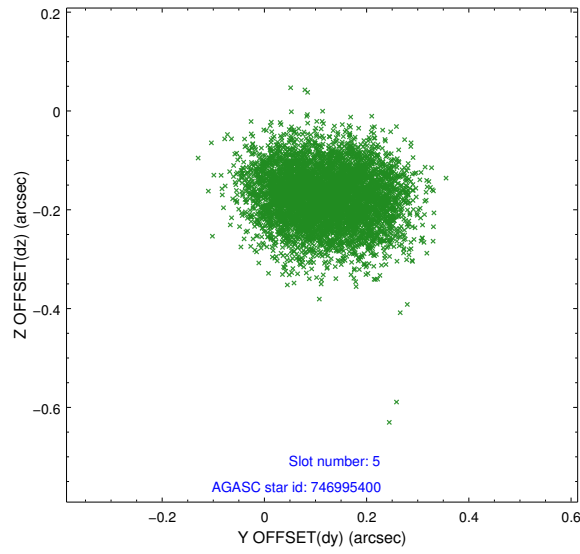
2.4.1 Slot 3



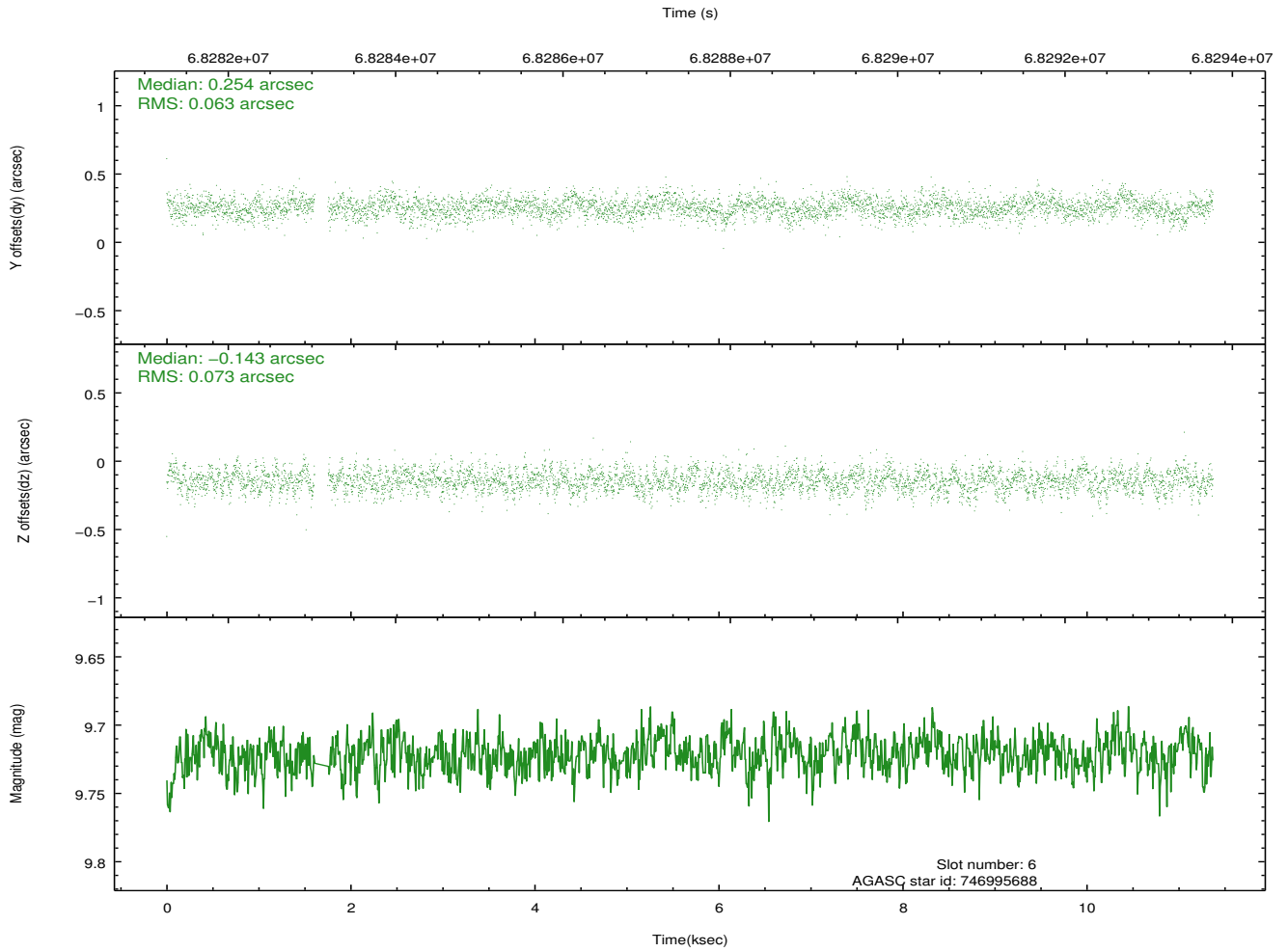
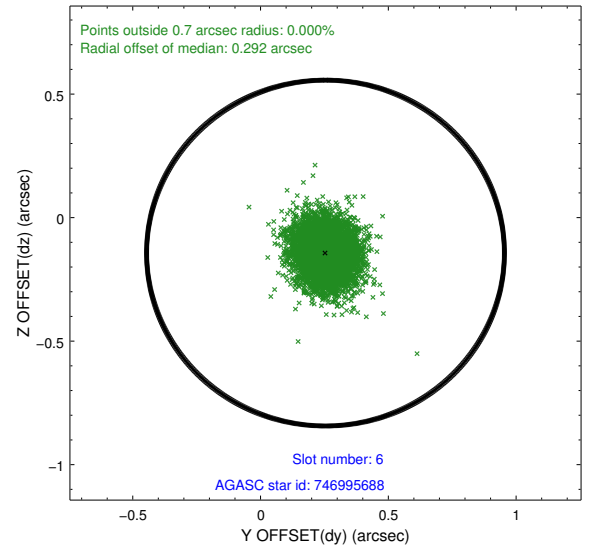
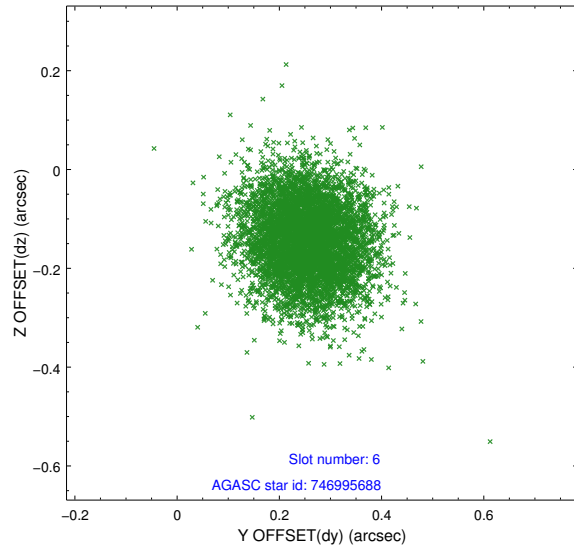
2.4.2 Slot 4



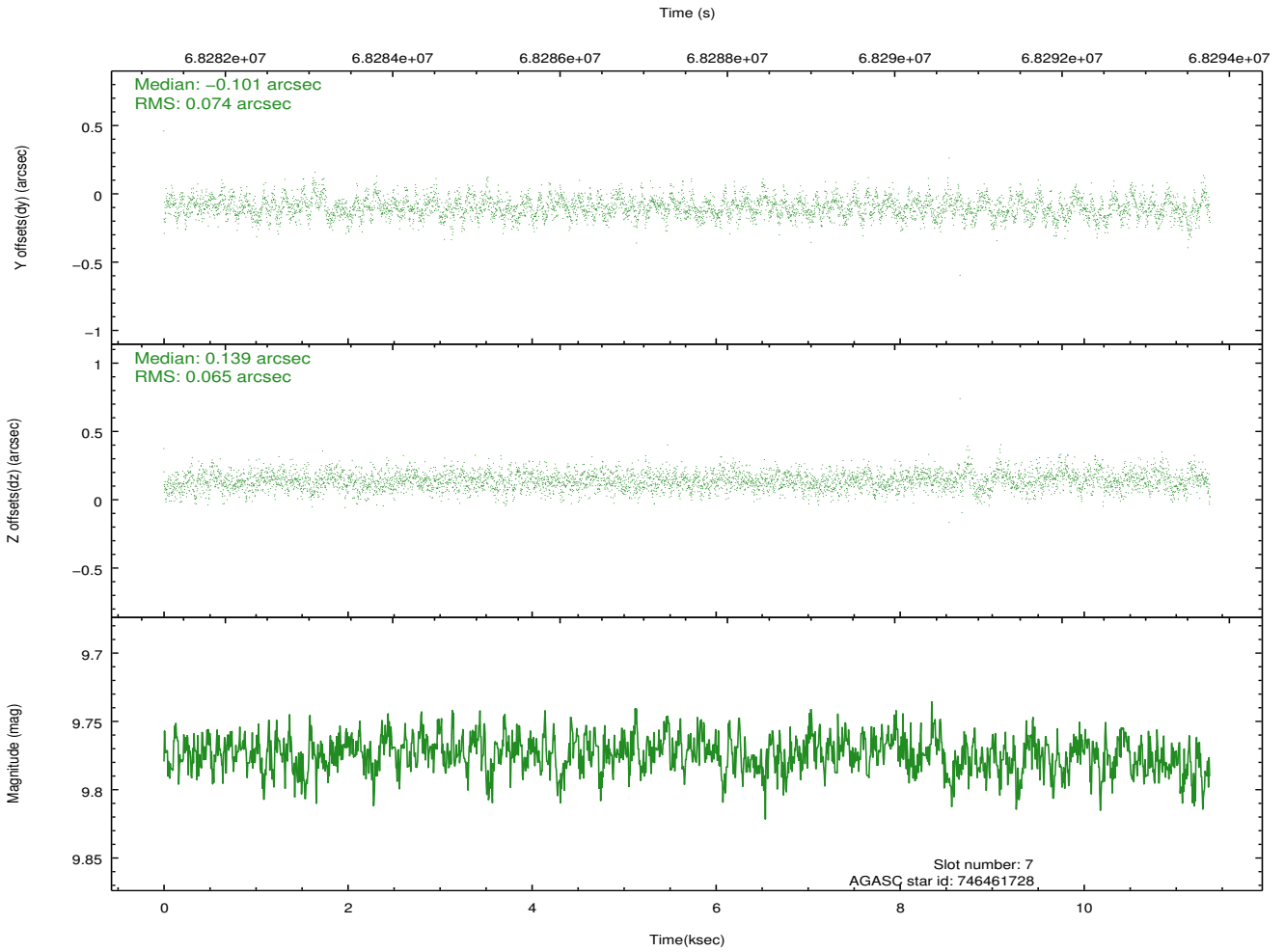
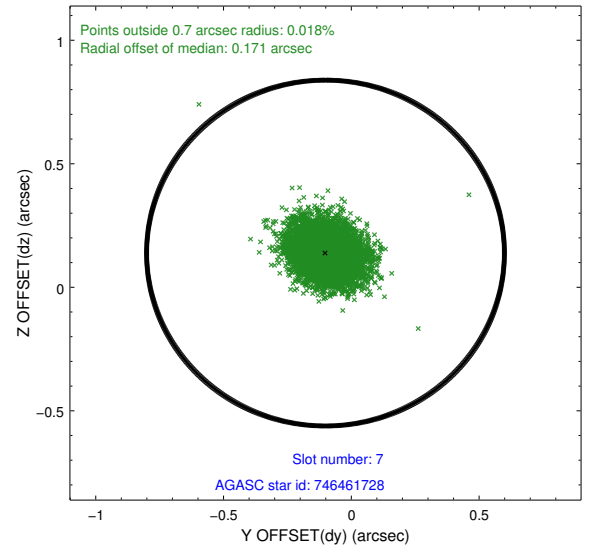
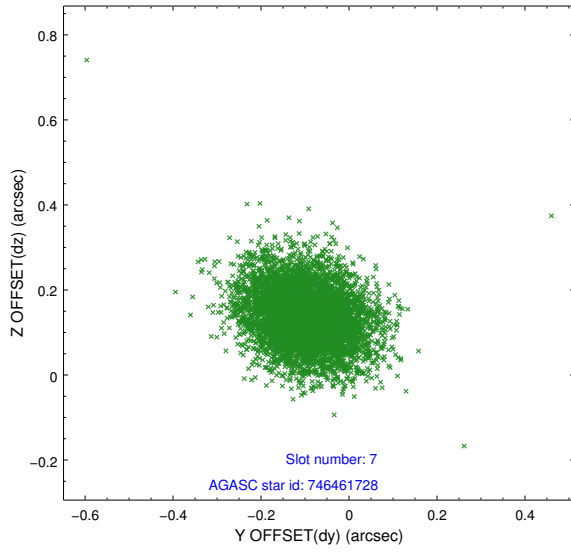
2.4.3 Slot 5



2.4.4 Slot 6

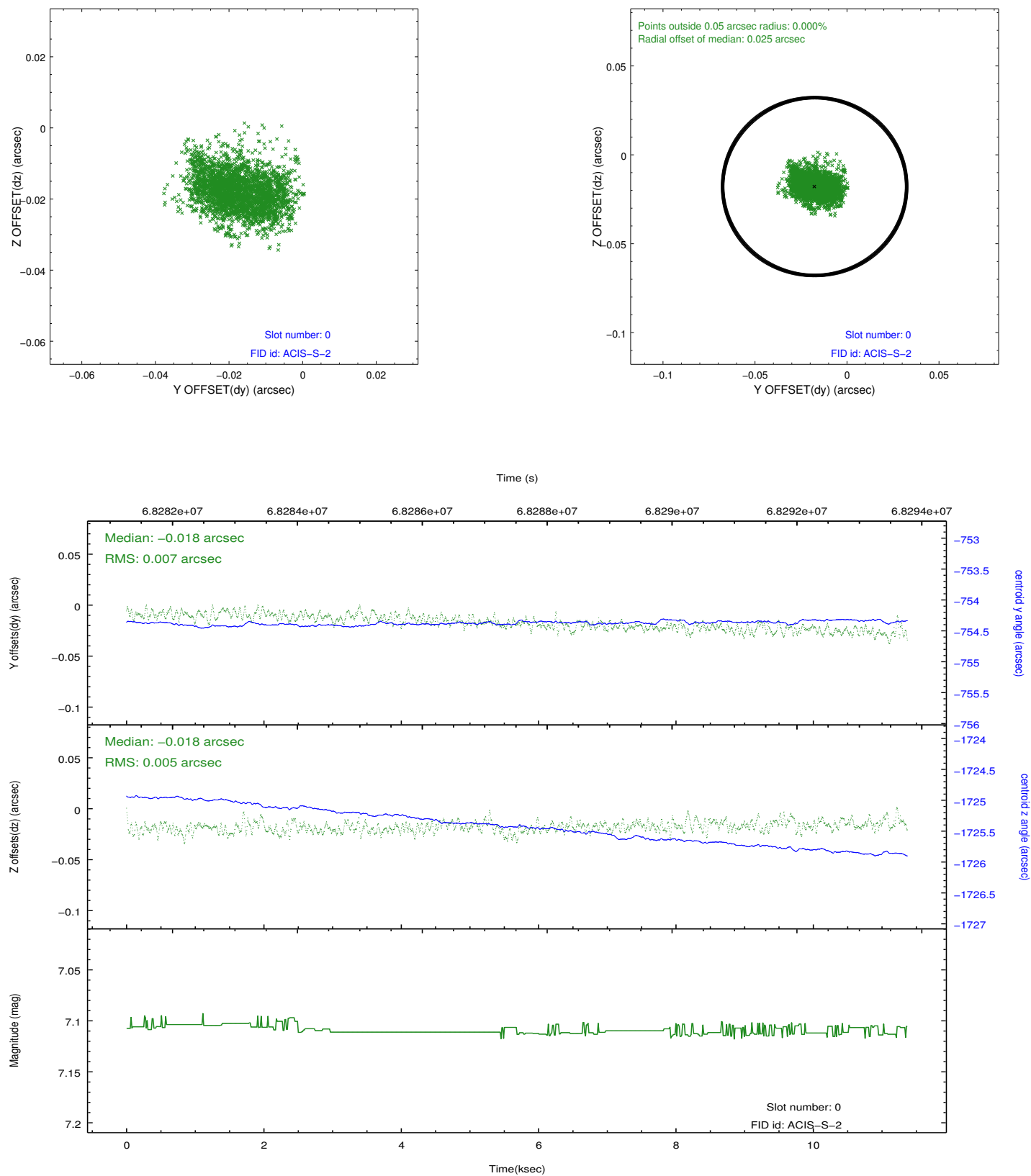


2.4.5 Slot 7

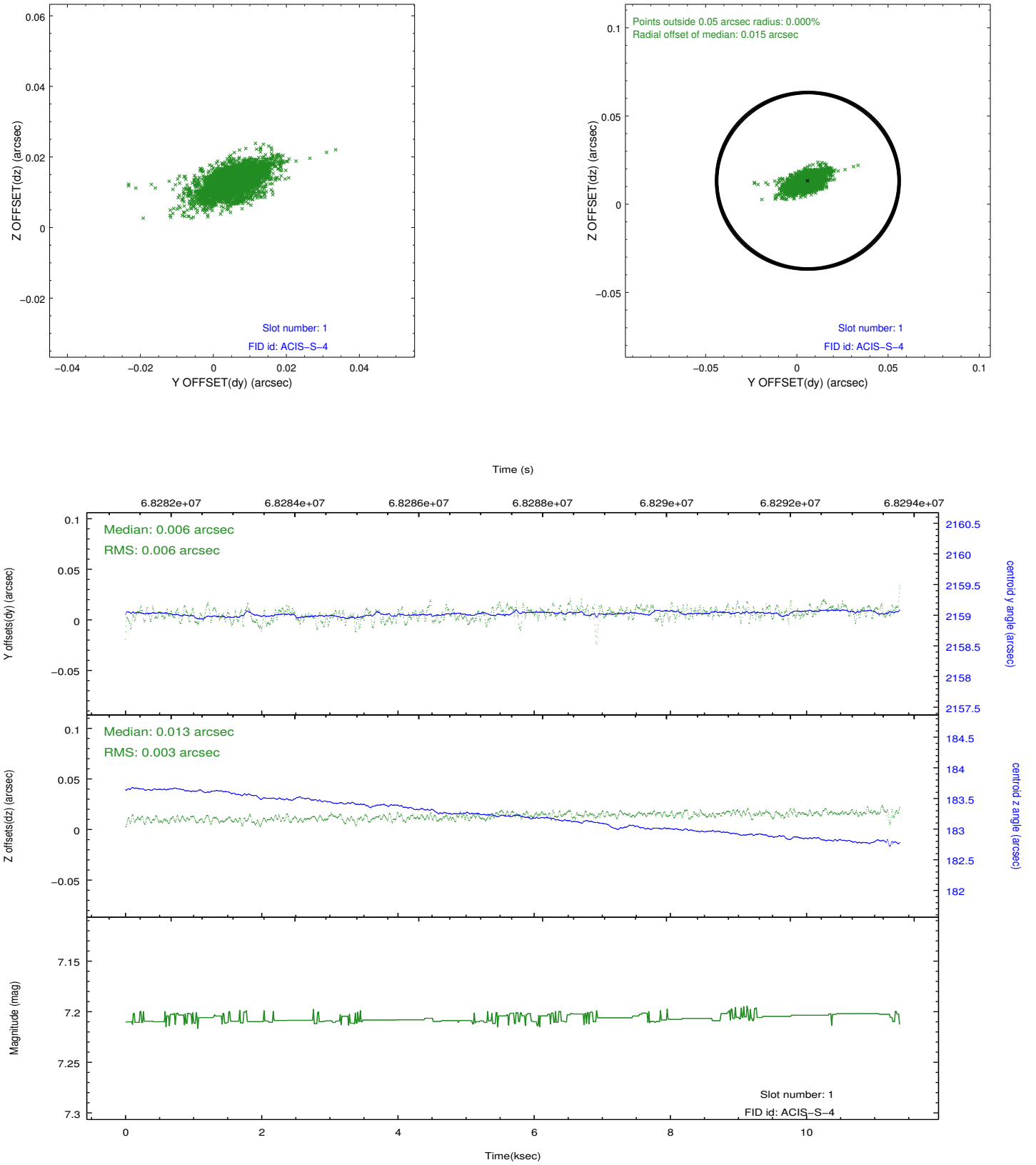


2.5 FID Slots

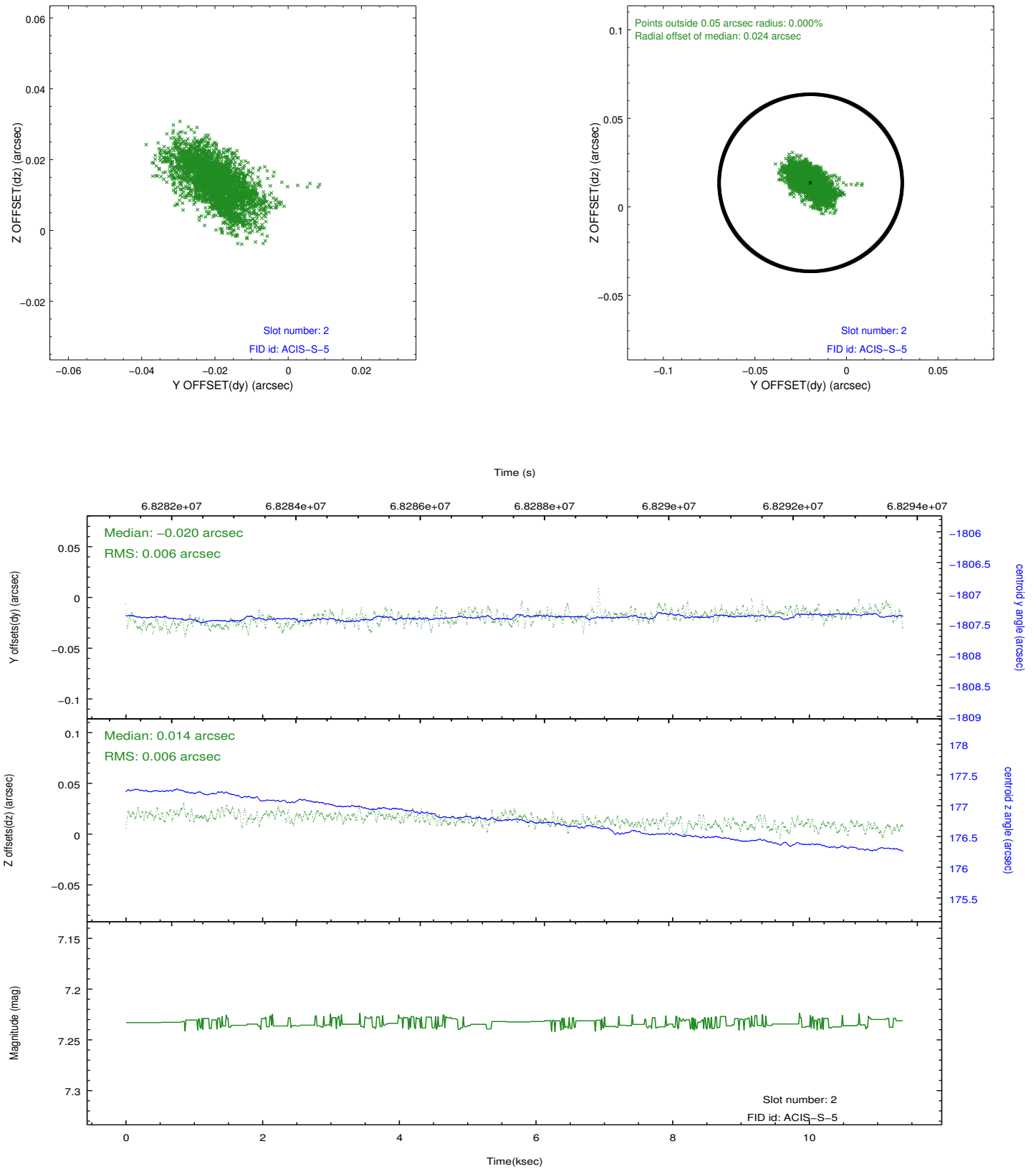
2.5.1 Slot 0



2.5.2 Slot 1



2.5.3 Slot 2



A Summary

A.1 Status

V&V Scientist	Jen Lauer
V&V Date (YYYY-MM-DD)	2012.08.24
V&V Edition	1
V&V Disposition and Status	OK
V&V Charge Time	9.996

A.2 Comments