

V&V Reference Report

L2 ASCDS Version : 8.4.3

Observation 14272 - L2 Version 1
Chandra X-Ray Center

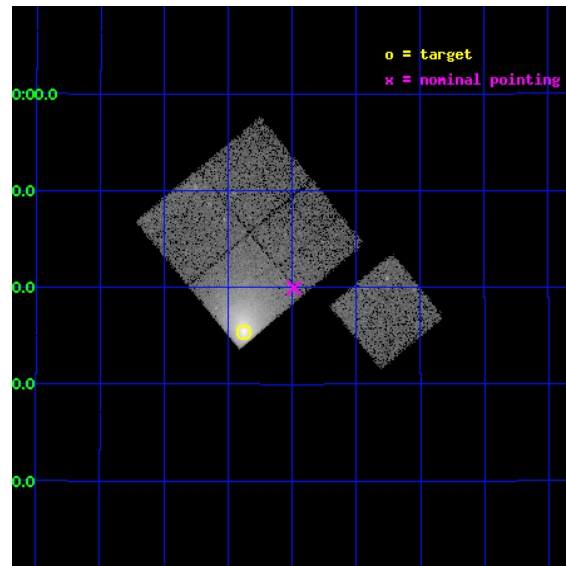
L2 Processing Date : Mar 26 2012

Contents

1	Front	2
2	OBI	3
2.1	OBI	3
2.1.1	Images	3
2.1.2	Bias	3
2.1.3	Parameters	4
2.1.4	Events	4
2.2	Compared Parameters	5
2.3	Aspect	6
2.4	Star Slots	9
2.4.1	Slot 3	9
2.4.2	Slot 4	10
2.4.3	Slot 5	11
2.4.4	Slot 6	12
2.4.5	Slot 7	13
2.5	FID Slots	14
2.5.1	Slot 0	14
2.5.2	Slot 1	15
2.5.3	Slot 2	16
A	Summary	17
A.1	Status	17
A.2	Comments	17

1 Front

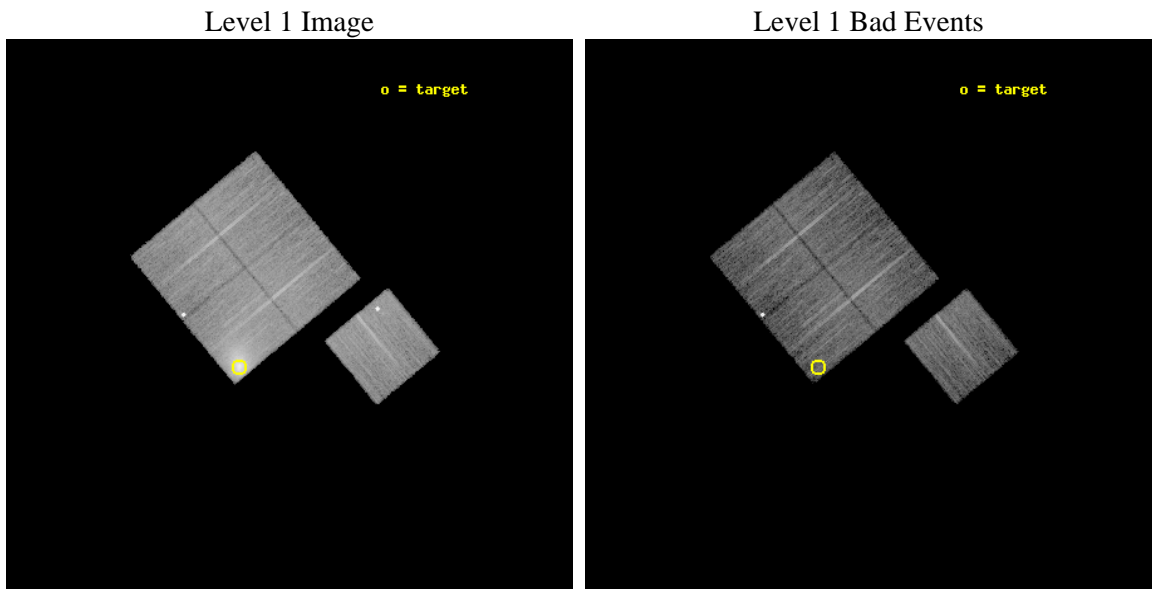
seq_num	890067	Sequence number
obs_id	14272	Observation id
title	AO-13 Calibration Observations of A1795	Proposal title
observer	Dr. CXC Calibration	Principal investigator
object	A1795	Source name
dtcycle	0	
cycle	P	events from which exps? Prim/Second/Both
ra_targ	207.219583	Observer's specified target RA [deg]
dec_targ	26.590833	Observer's specified target Dec [deg]
ra_nom	207.12180201301	Nominal RA [deg]
dec_nom	26.666152245081	Nominal Dec [deg]
roll_nom	140.32451091975	Nominal Roll [deg]
revision	1	Processing version of data
ontime	14777.49026531	Sum of GTIs [s]
livetime	14584.411475963	Livetime [s]
ontime0	14774.226115525	Sum of GTIs [s]
ontime1	14774.267144918	Sum of GTIs [s]
ontime2	14774.308184981	Sum of GTIs [s]
ontime3	14777.49026531	Sum of GTIs [s]
ontime6	14777.326105356	Sum of GTIs [s]
l2events	114057	Number of level 2 events



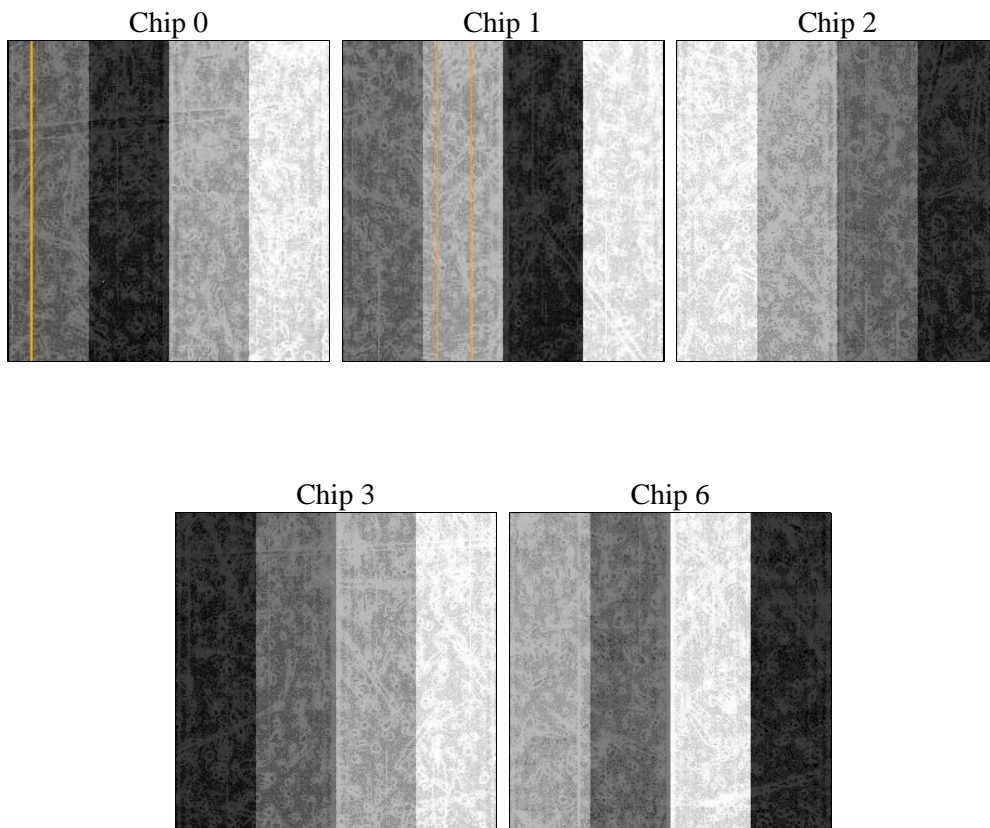
2 OBI

2.1 OBI

2.1.1 Images



2.1.2 Bias



2.1.3 Parameters

obi_num	1	Obi number	sched_exp_time	15000.000000	[s] Scheduled observation exposure time
ascdsver	8.4.3	Processing system revision	ontime	14777.49026531	Sum of GTIs [s]
caldsver	4.4.8	 	ontime0	14774.226115525	Sum of GTIs [s]
date	2012-03-26T17:59:35	Date and time of file creation	ontime1	14774.267144918	Sum of GTIs [s]
revision	1	Processing version of data	ontime2	14774.308184981	Sum of GTIs [s]
			ontime3	14777.49026531	Sum of GTIs [s]
			ontime6	14777.326105356	Sum of GTIs [s]
			l1events	501932	Number of level 1 events

2.1.4 Events

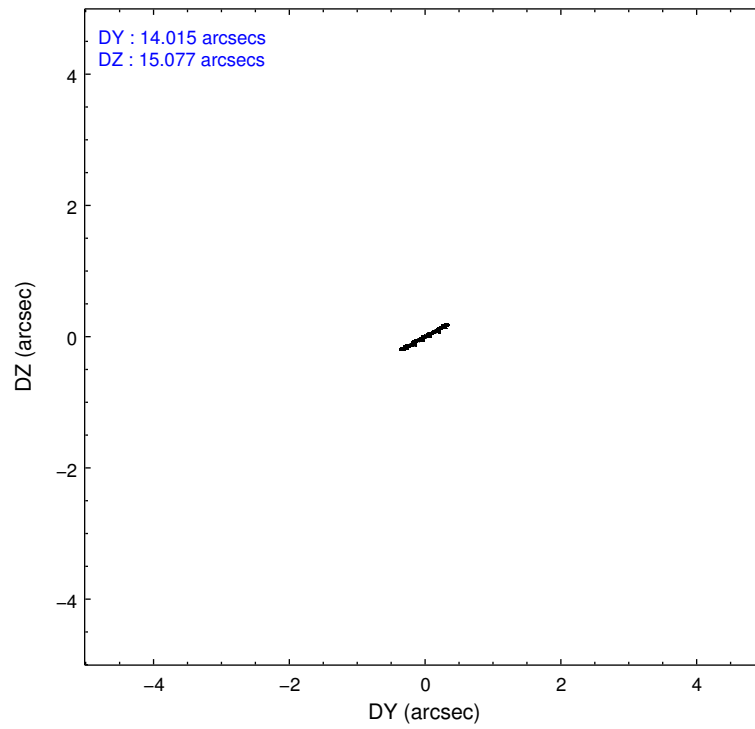
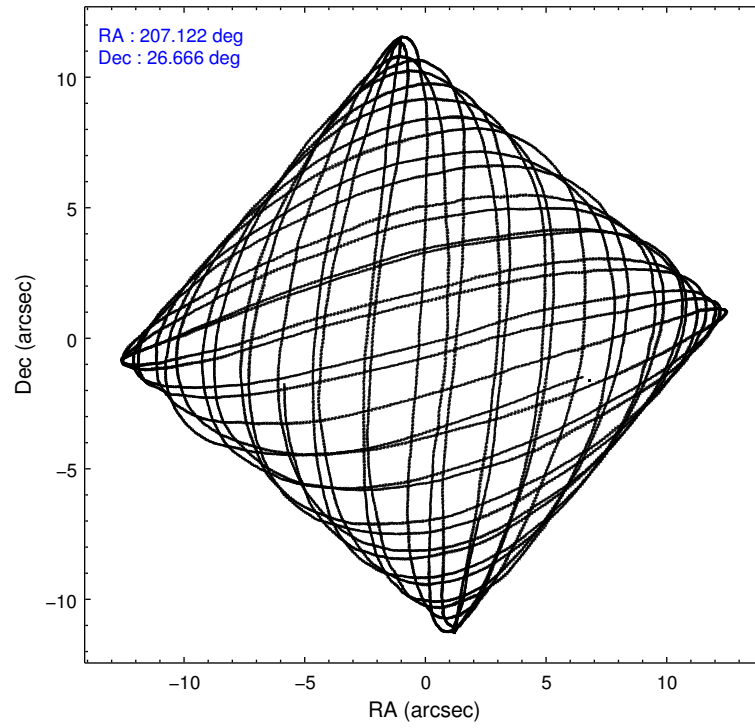
	ccd 0	ccd 1	ccd 2	ccd 3	ccd 6
level 1 events	80067	86018	88848	154640	92359
rejected events	69752	73542	77720	75719	77262
rejected %	87%	85%	87%	48%	83%

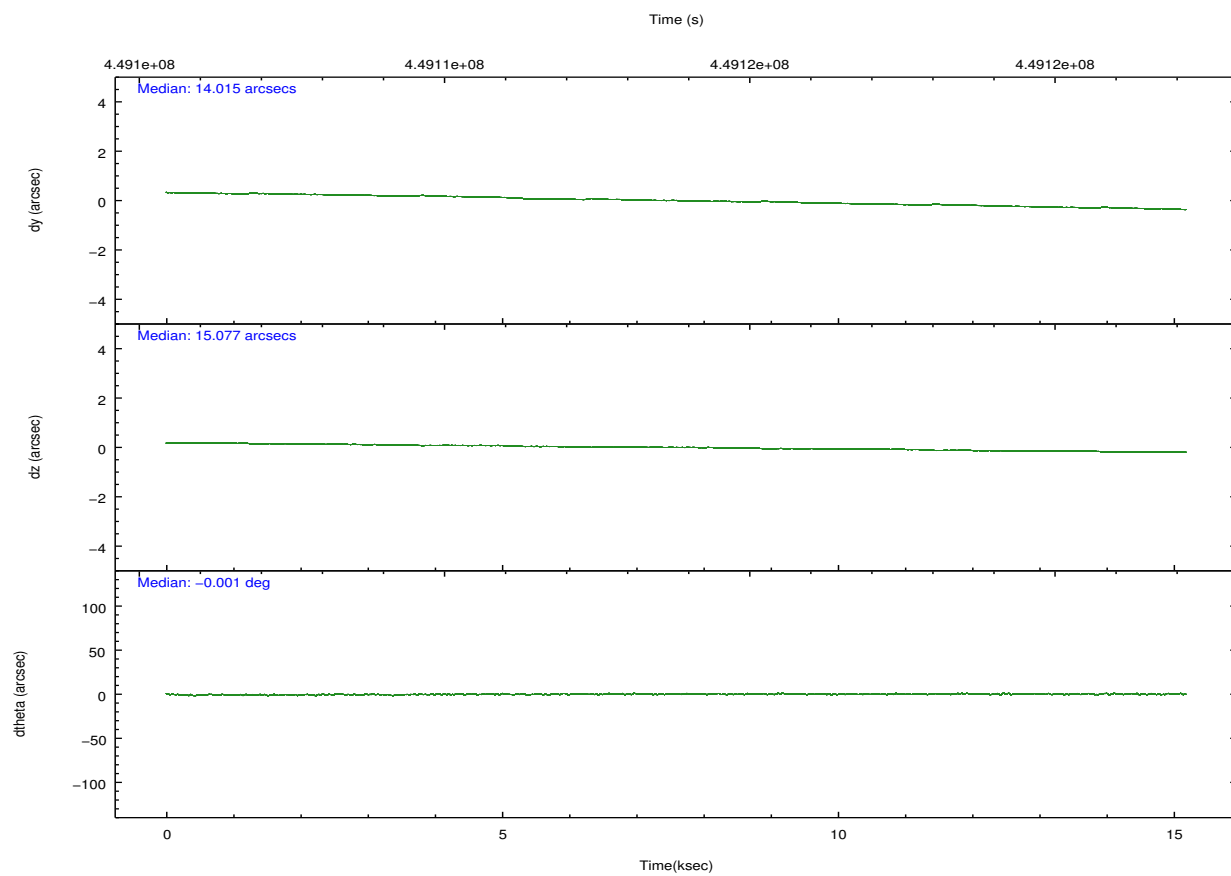
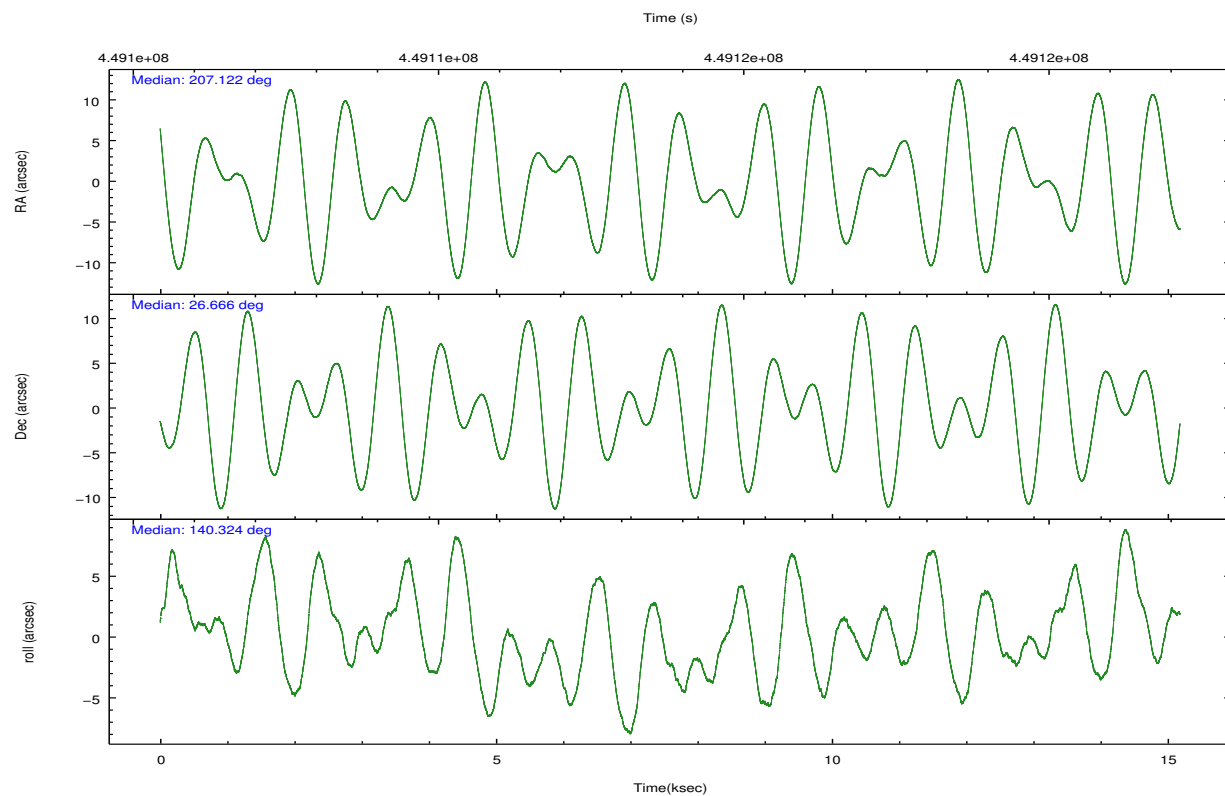
	ccd 0	ccd 1	ccd 2	ccd 3	ccd 6
grade 0 events	3720	5071	4719	58745	8340
	4%	5%	5%	37%	9%
grade 1 events	30	4627	73	245	77
	0%	5%	0%	0%	0%
grade 2 events	2521	2770	2451	9516	2313
	3%	3%	2%	6%	2%
grade 3 events	1075	1133	1048	3355	1061
	1%	1%	1%	2%	1%
grade 4 events	990	1163	1049	3318	1066
	1%	1%	1%	2%	1%
grade 5 events	3909	4102	3631	4665	4170
	4%	4%	4%	3%	4%
grade 6 events	2014	2340	1865	3997	2320
	2%	2%	2%	2%	2%
grade 7 events	65808	64812	74012	70799	73012
	82%	75%	83%	45%	79%

2.2 Compared Parameters

Parameter	Planned	Actual	Parameter	Planned	Actual
Instrument	ACIS	ACIS	Obspar format version number	7	7
Detector	ACIS-01236	ACIS-01236	Obspar file type	PREDICTED	ACTUAL
Grating	NONE	NONE	Obspar update status	NONE	UPDATED
Data mode	VFAINT	VFAINT	Number of optional ACIS chips dropped	0	0
Observation mode	POINTING	POINTING	On-chip summing requested	N	N
[deg] Pointing RA	207.152178	207.1218020130092	Subarray requested	NONE	NONE
[deg] Pointing Dec	26.661669	26.66615224508132	Alternating exposures requested	N	N
[deg] Pointing Roll	140.102186	140.324510919755	[s] Primary exposure time	0.000000	3.1
[mm] SIM focus pos	-0.782348	-0.7809083437167272			
[mm] SIM defocus	0	0.001439871863259334			
[mm] SIM translation stage pos	-214.092463	-214.0989765584371			
[mm] SIM translation stage offset	-19.5	-19.49347644449256			
[s] Observation start time (MET)	449106381.184000	449106004.97198			
Observation start date	2012-03-25T23:45:15	2012-03-25T23:40:04			
[s] Observation end time (MET)	449121381.184000	449121515.2728			
Observation end date	2012-03-26T03:55:15	2012-03-26T03:58:35			
Read mode	TIMED	TIMED			

2.3 Aspect



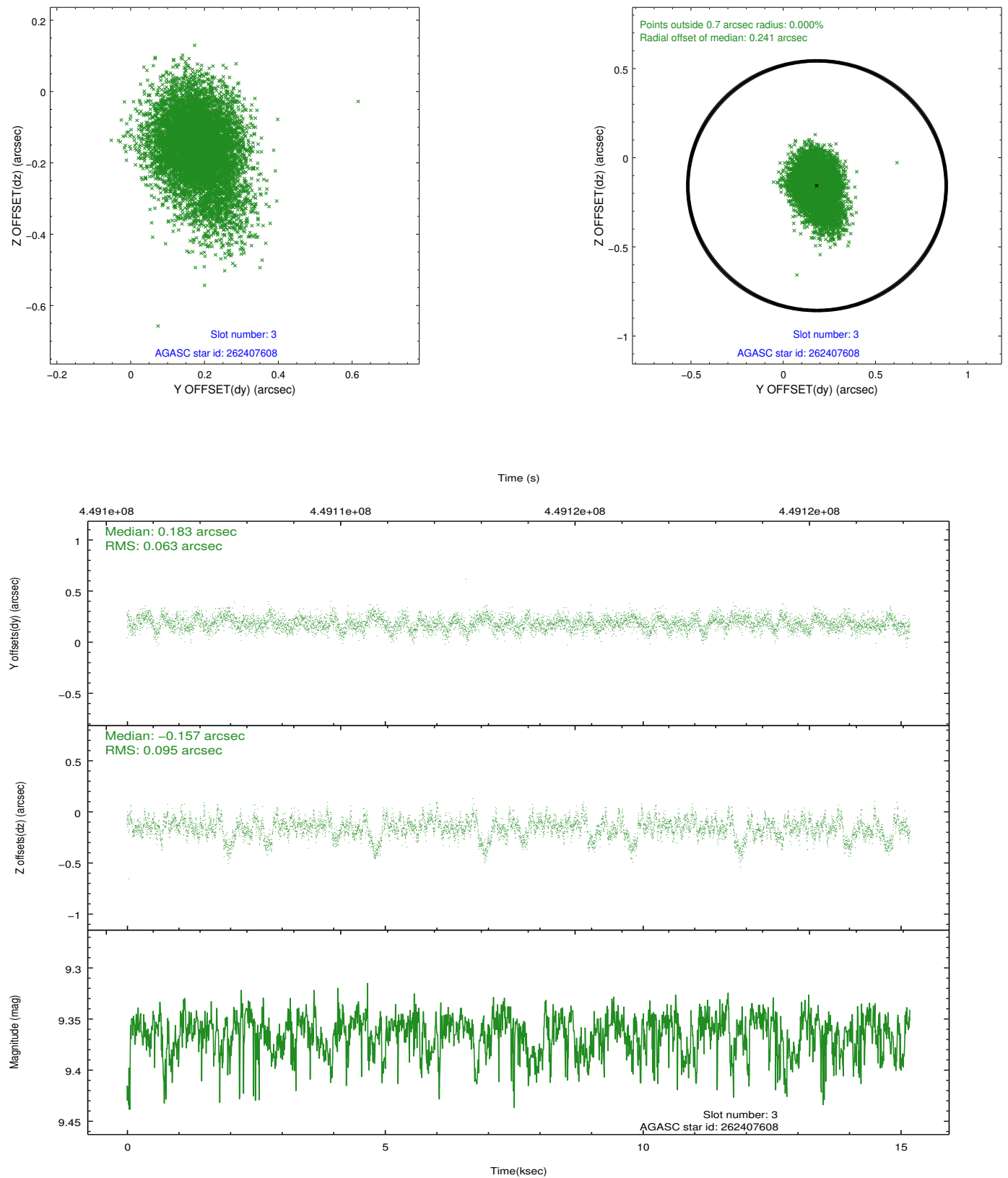


Slot Statistics

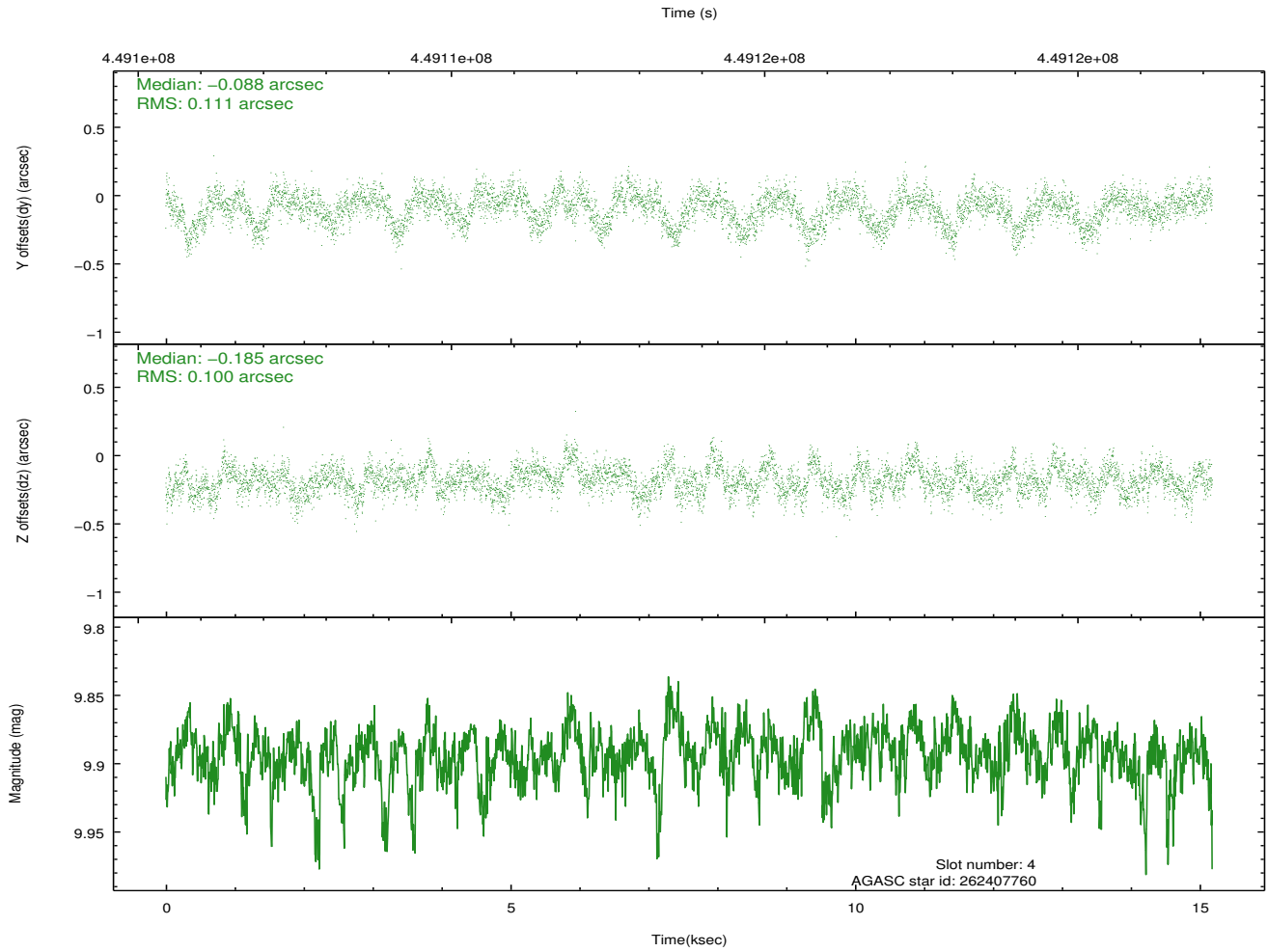
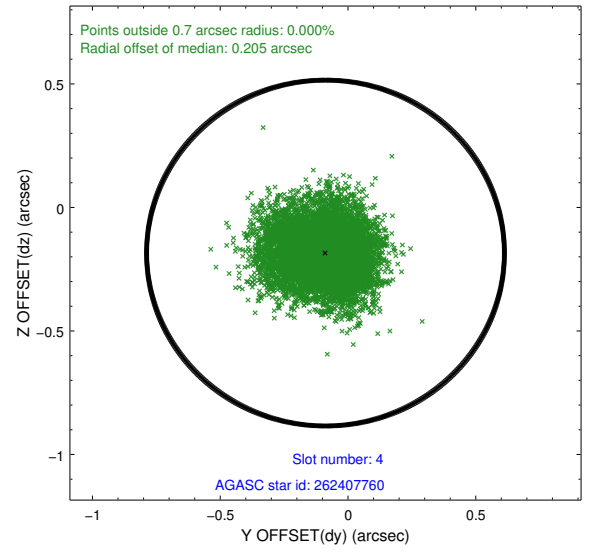
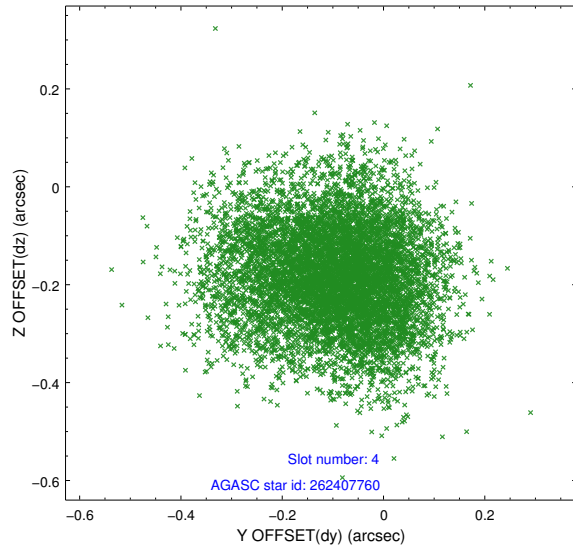
slot	status	id	mag	n_pts	med_dy	med_dz	dr1	dr2	ra	dec	mean_y	mean_z
0	FID	ACIS-I-1	7.09	3703	0.287	-0.212	0.011	0.026	0.000000	0.000000	925.37	-1239.23
1	FID	ACIS-I-5	7.10	3702	-0.493	0.197	0.011	0.016	0.000000	0.000000	-1823.31	658.46
2	FID	ACIS-I-6	7.15	3702	0.117	0.085	0.013	0.020	0.000000	0.000000	390.48	1303.15
3	GUIDE	262407608	9.36	7392	0.183	-0.157	0.118	0.205	207.378401	26.435507	-1081.00	156.31
4	GUIDE	262407760	9.89	7397	-0.088	-0.185	0.160	0.257	206.566773	26.577263	1254.22	1438.90
5	GUIDE	262407800	10.07	7392	-0.214	0.323	0.213	0.344	207.321181	27.251762	949.63	-1974.56
6	GUIDE	262408936	9.67	7402	-0.008	0.119	0.138	0.225	207.154731	26.726554	143.65	-184.51
7	GUIDE	262411960	9.66	7401	0.126	-0.103	0.130	0.218	207.327895	25.881727	-2237.00	1788.81

2.4 Star Slots

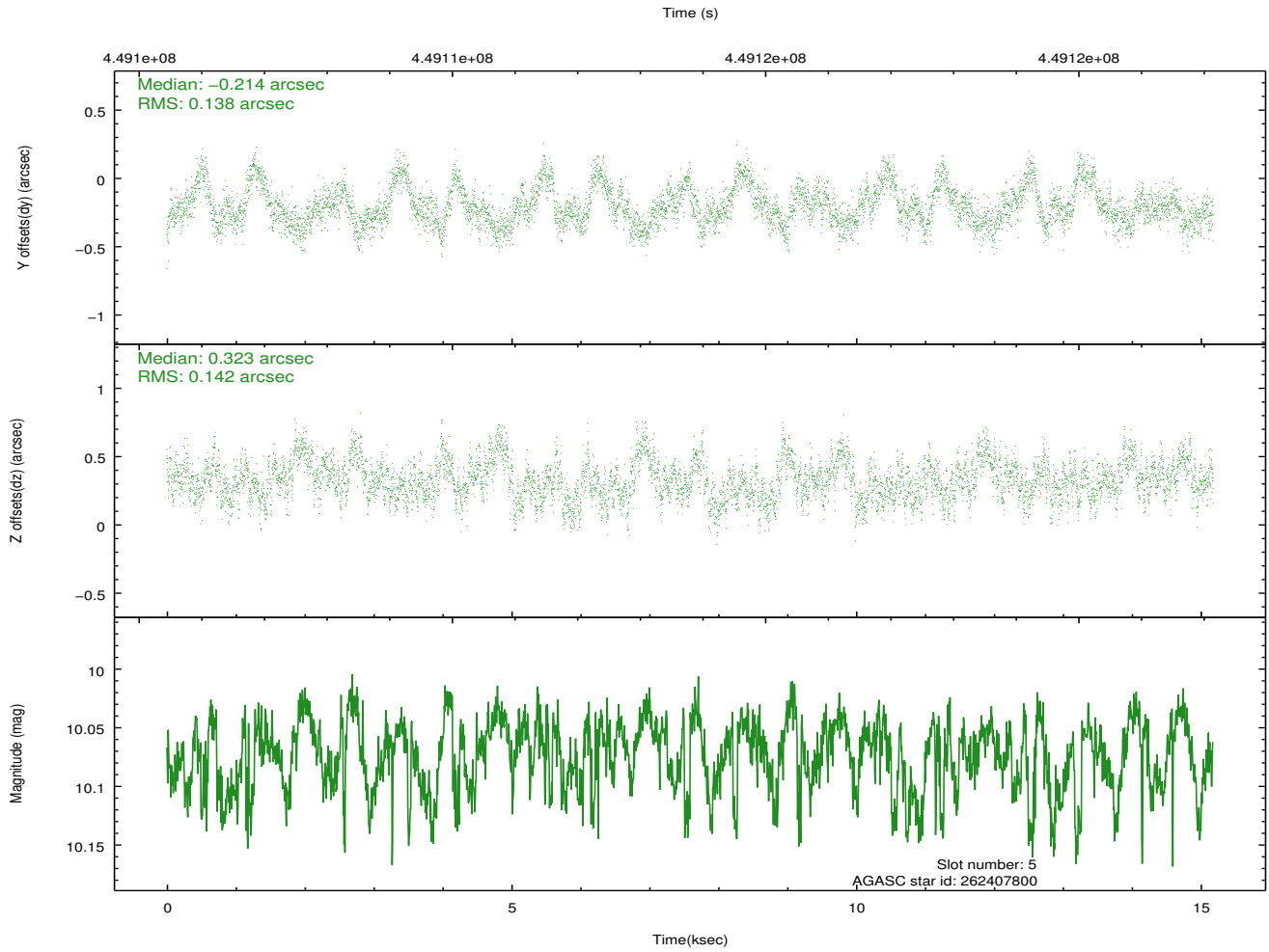
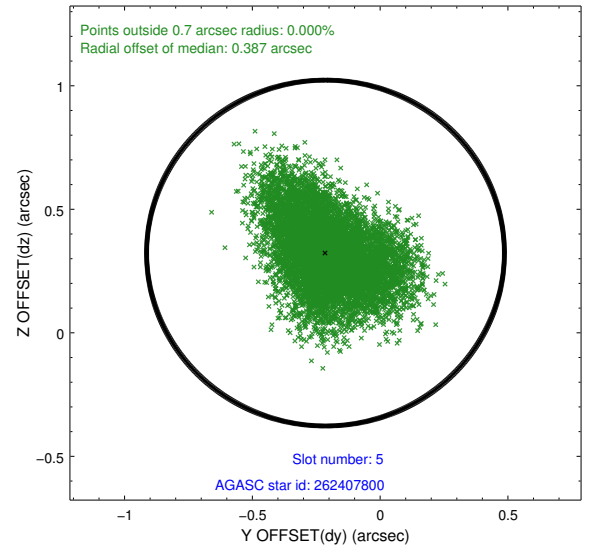
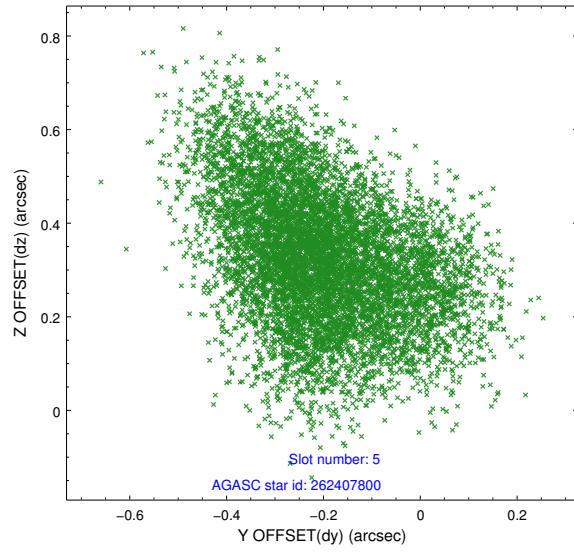
2.4.1 Slot 3



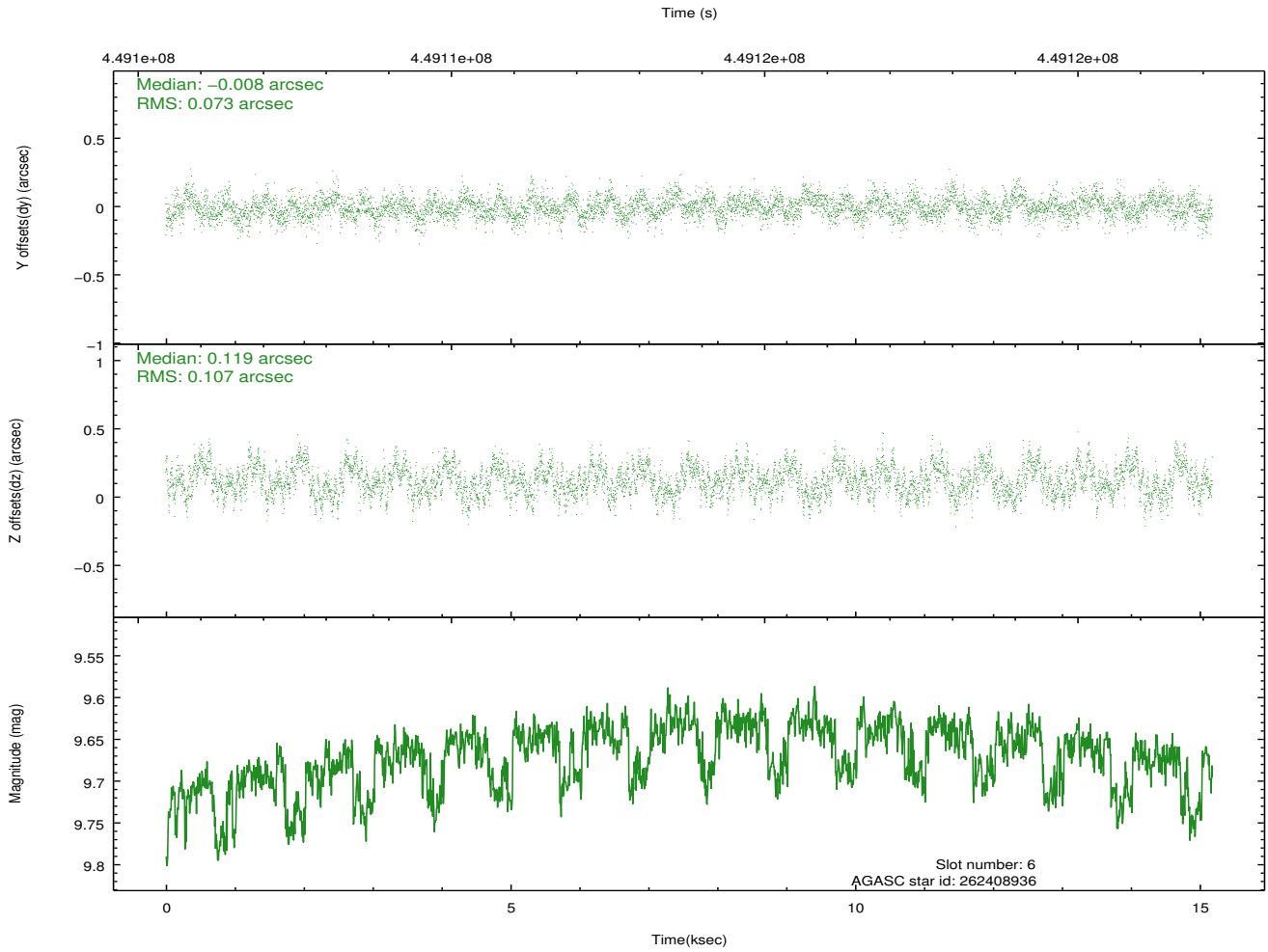
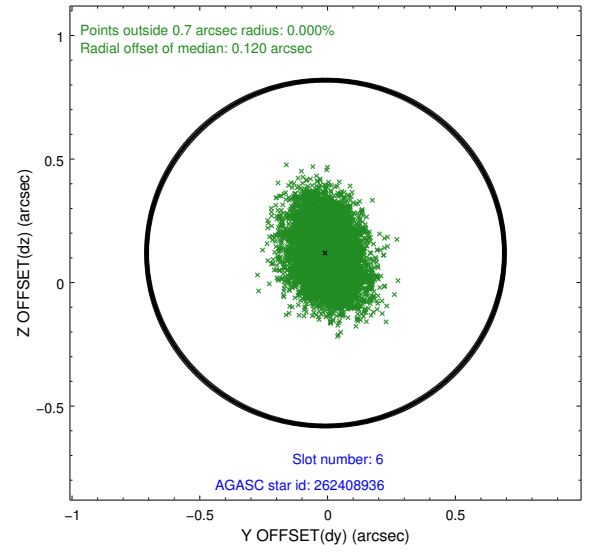
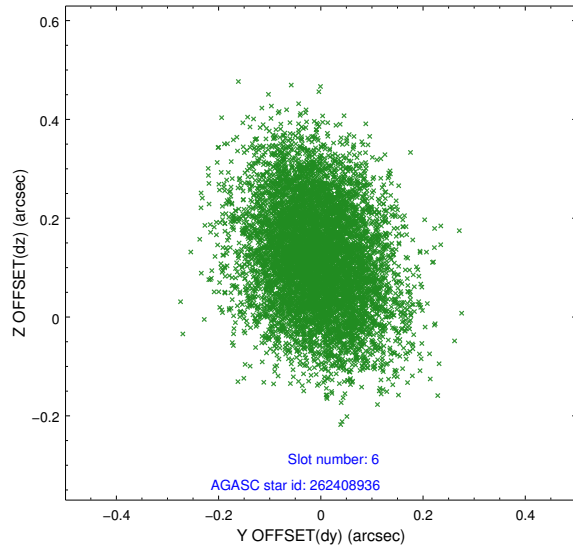
2.4.2 Slot 4



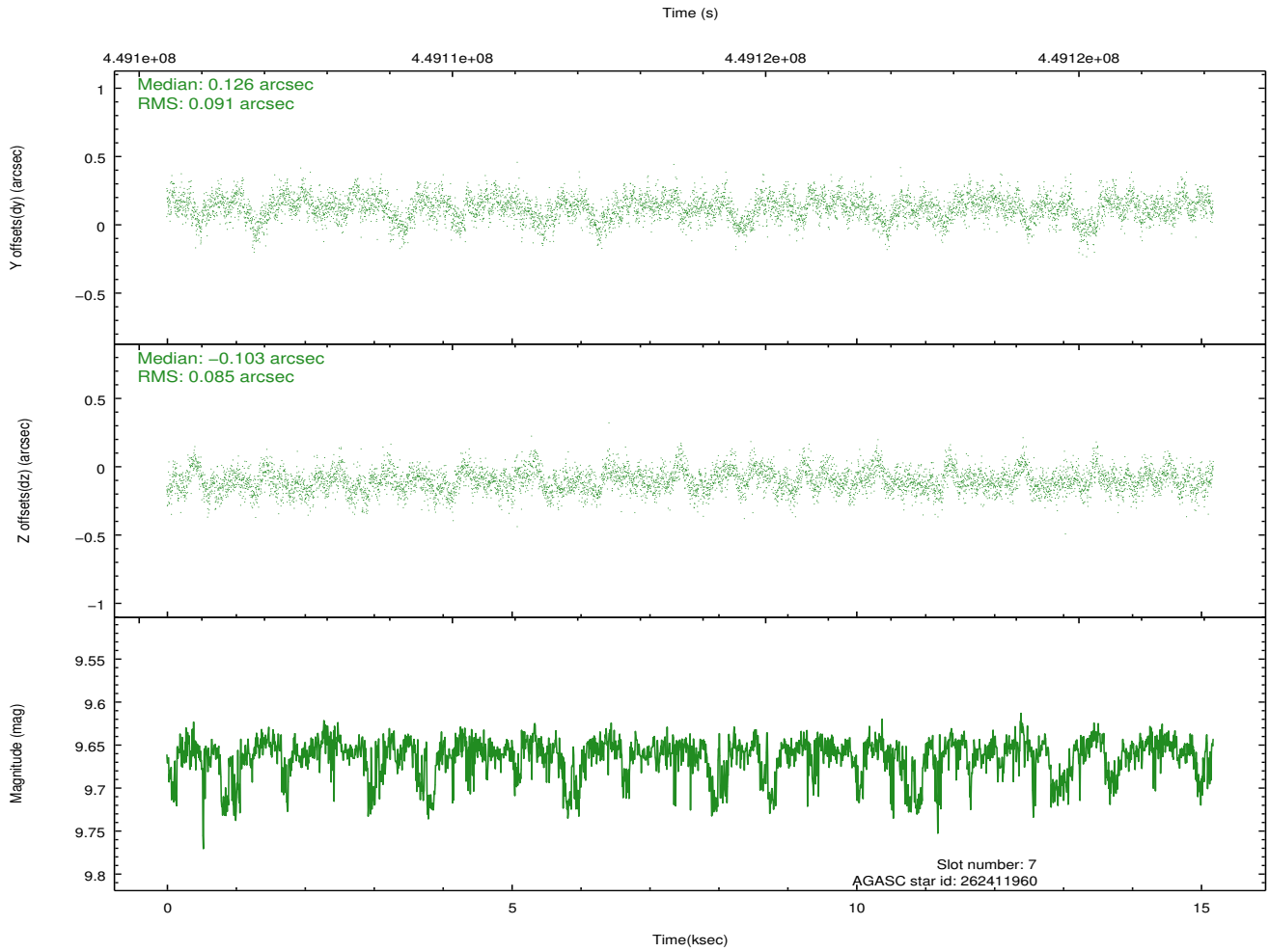
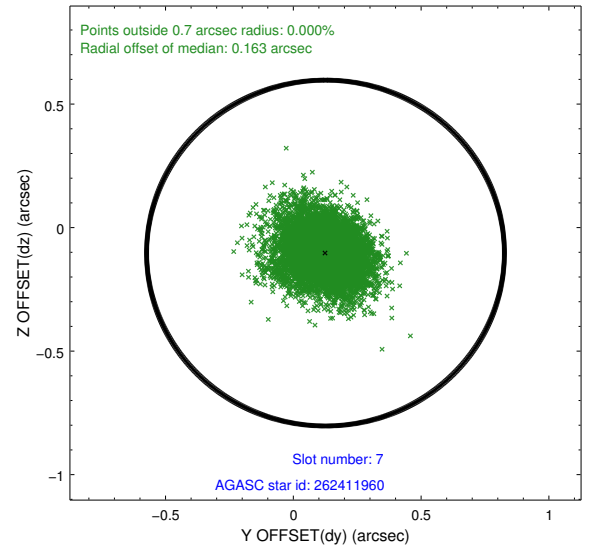
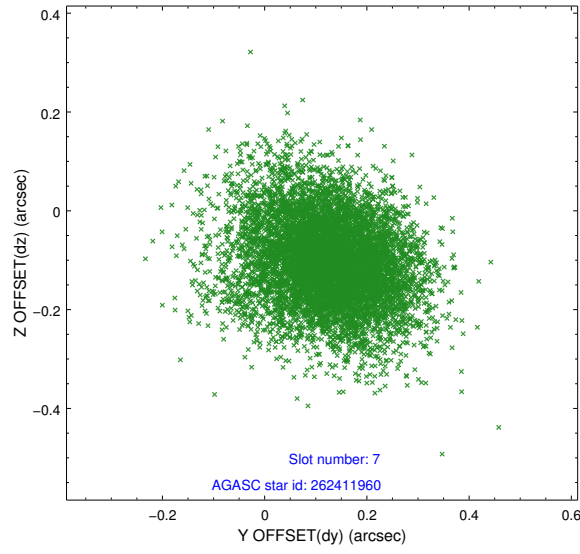
2.4.3 Slot 5



2.4.4 Slot 6

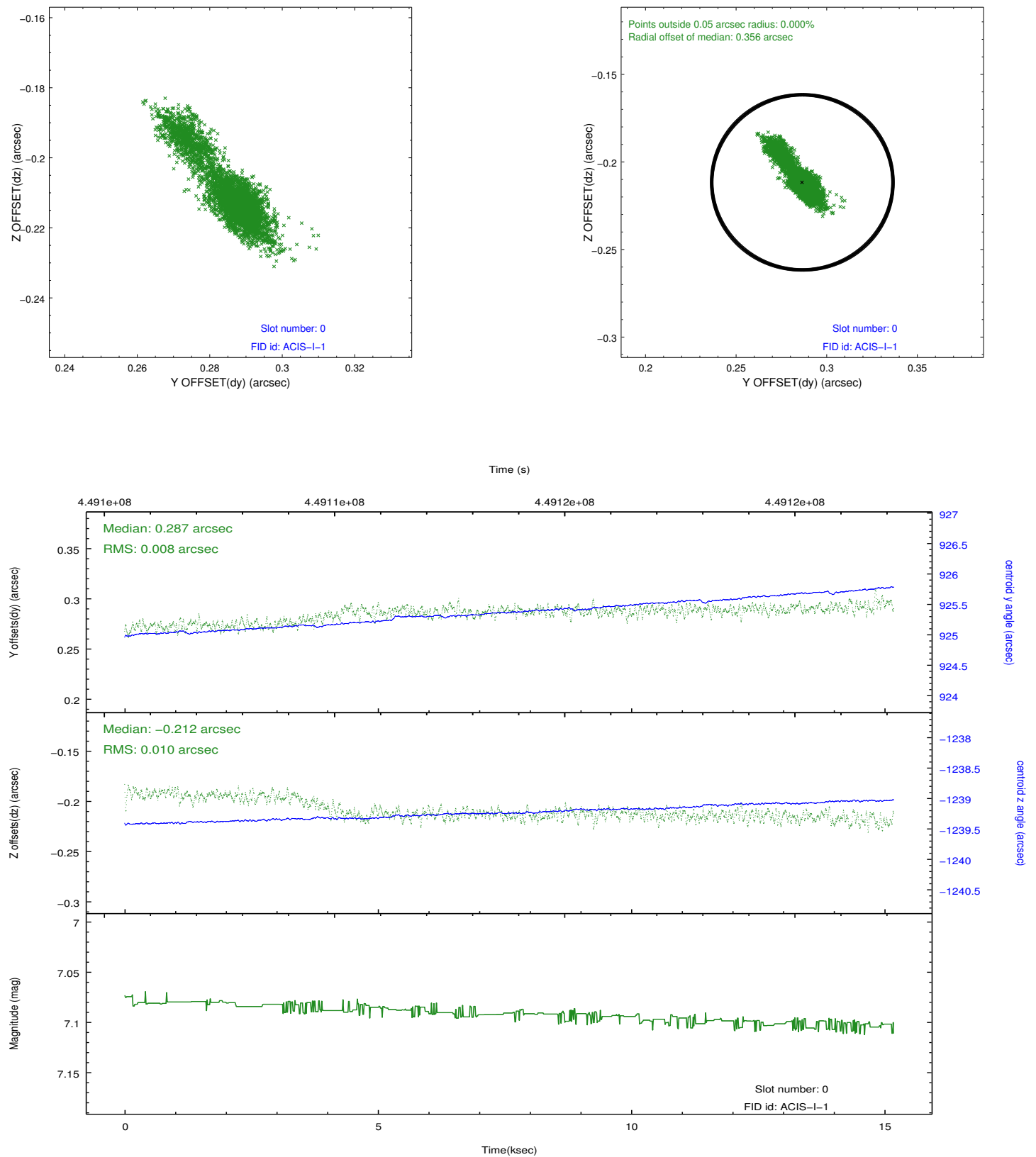


2.4.5 Slot 7

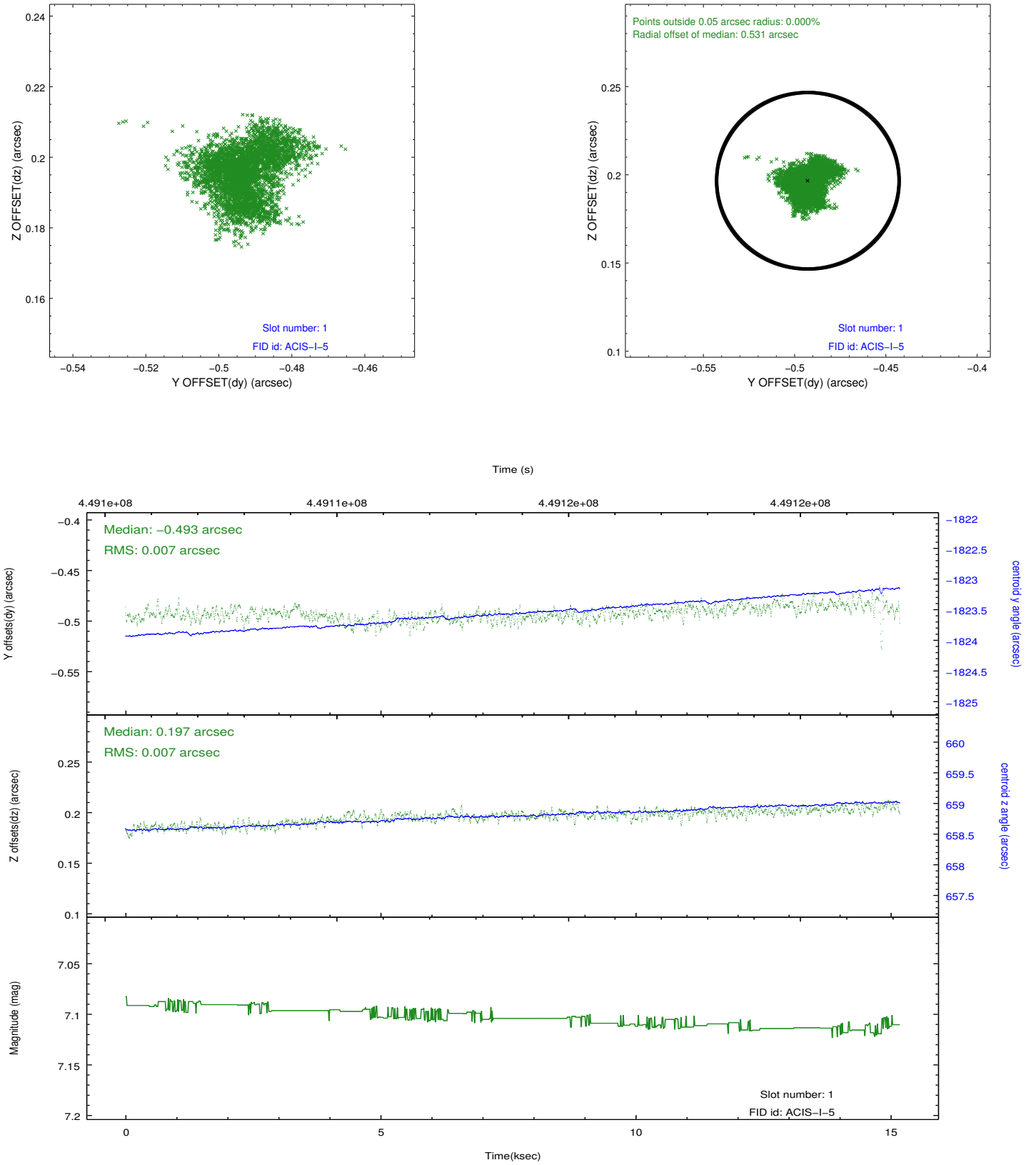


2.5 FID Slots

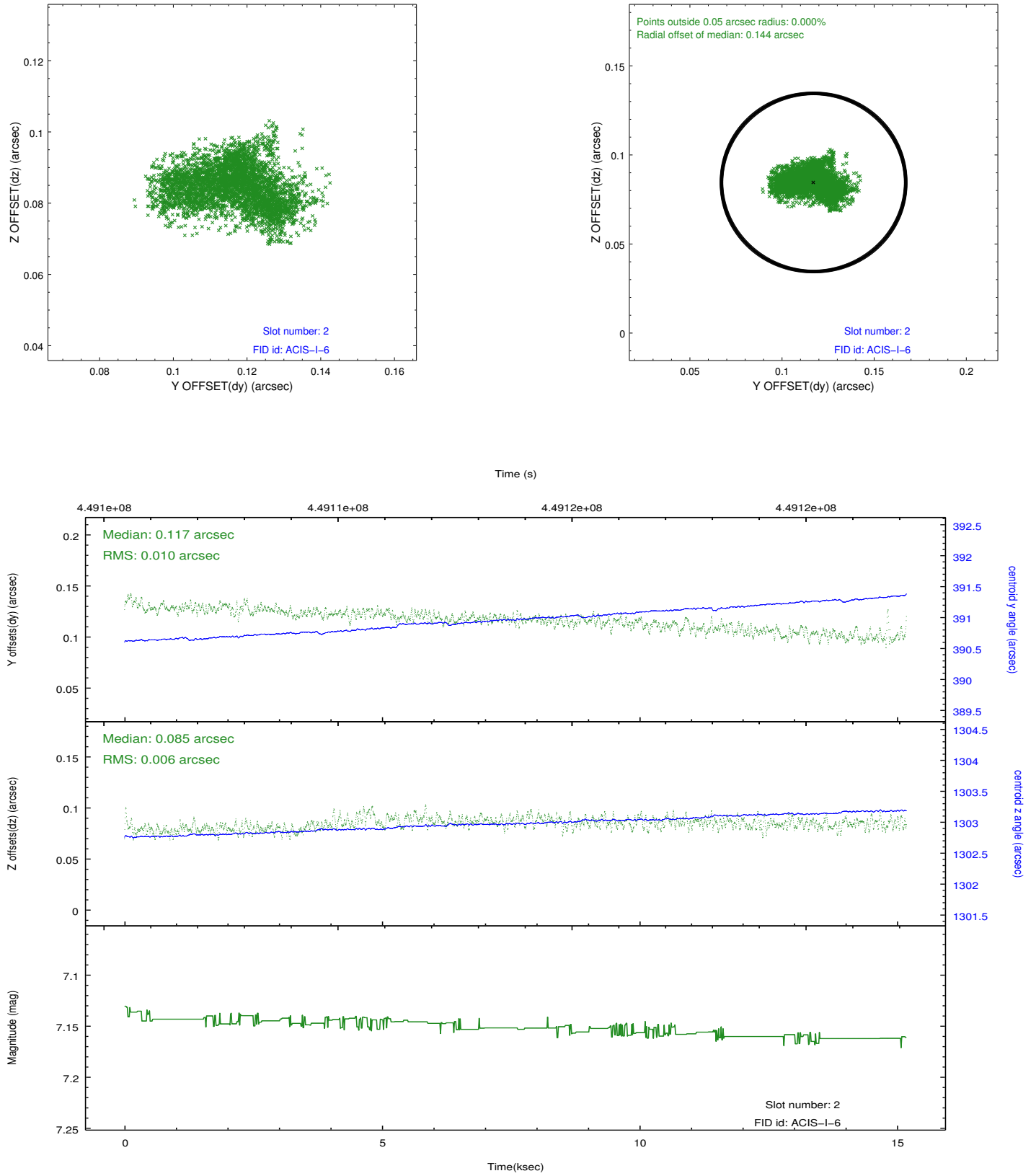
2.5.1 Slot 0



2.5.2 Slot 1



2.5.3 Slot 2



A Summary

A.1 Status

V&V Scientist	Jen Lauer
V&V Date (YYYY-MM-DD)	2012.03.27
V&V Edition	1
V&V Disposition and Status	OK
V&V Charge Time	14.77749026531

A.2 Comments