

# V&V Reference Report

## L2 ASCDS Version : 8.4.3

Observation 14042 - L2 Version 1  
Chandra X-Ray Center

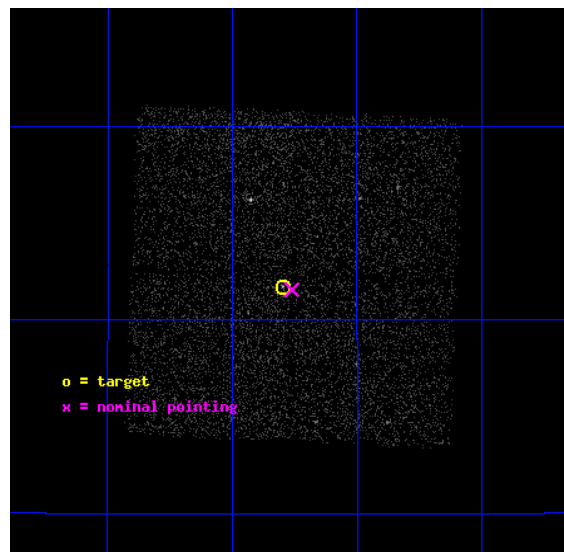
L2 Processing Date : Mar 26 2012

## Contents

<b>1</b>	<b>Front</b>	<b>2</b>
<b>2</b>	<b>OBI</b>	<b>3</b>
2.1	OBI . . . . .	3
2.1.1	Images . . . . .	3
2.1.2	Bias . . . . .	3
2.1.3	Parameters . . . . .	4
2.1.4	Events . . . . .	4
2.2	Compared Parameters . . . . .	5
2.3	Aspect . . . . .	6
2.4	Star Slots . . . . .	9
2.4.1	Slot 3 . . . . .	9
2.4.2	Slot 4 . . . . .	10
2.4.3	Slot 5 . . . . .	11
2.4.4	Slot 6 . . . . .	12
2.4.5	Slot 7 . . . . .	13
2.5	FID Slots . . . . .	14
2.5.1	Slot 0 . . . . .	14
2.5.2	Slot 1 . . . . .	15
2.5.3	Slot 2 . . . . .	16
<b>A</b>	<b>Summary</b>	<b>17</b>
A.1	Status . . . . .	17
A.2	Comments . . . . .	17

# 1 Front

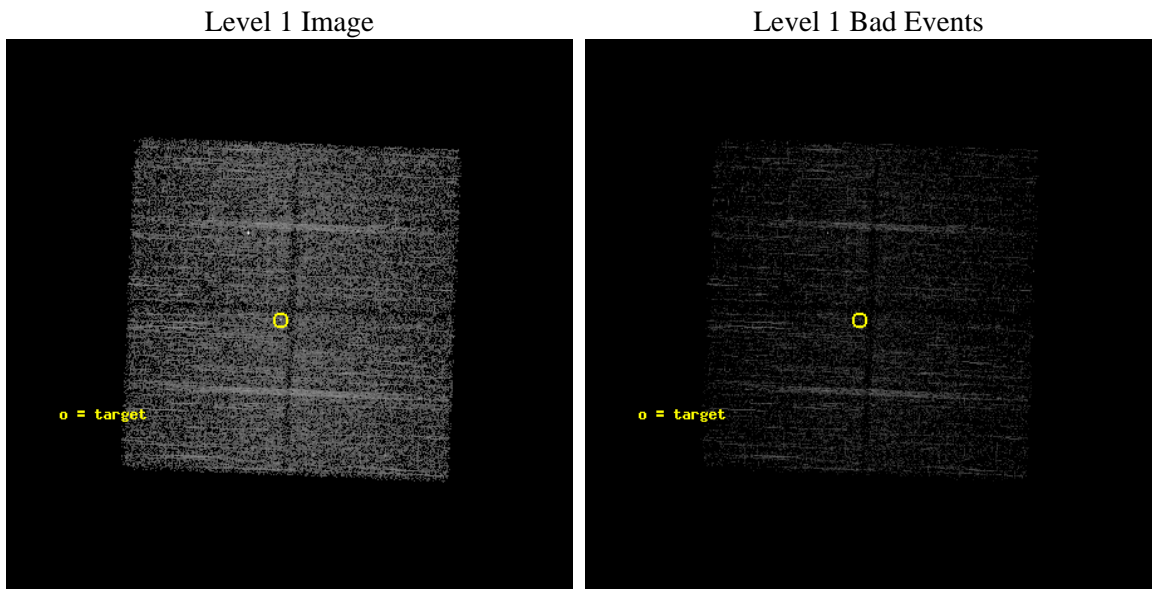
seq_num	901008	Sequence number
obs_id	14042	Observation id
title	BAT, Chandra, NuSTAR and The origin of the Cosmic X-ray Background	&#160
observer	Dr. Marco Ajello	Principal investigator
object	J1214.0+2932	Source name
dtcycle	0	&#160
cycle	P	events from which exps? Prim/Second/Both
ra_targ	183.574167	Observer's specified target RA [deg]
dec_targ	29.528611	Observer's specified target Dec [deg]
ra_nom	183.56542739951	Nominal RA [deg]
dec_nom	29.525935681598	Nominal Dec [deg]
roll_nom	182.29927900522	Nominal Roll [deg]
revision	1	Processing version of data
ontime	5090.2000391483	Sum of GTIs [s]
livetime	5023.6928282861	Livetime [s]
ontime0	5090.1151614785	Sum of GTIs [s]
ontime1	5090.1562014818	Sum of GTIs [s]
ontime2	5090.1972414851	Sum of GTIs [s]
ontime3	5090.2000391483	Sum of GTIs [s]
l2events	12951	Number of level 2 events



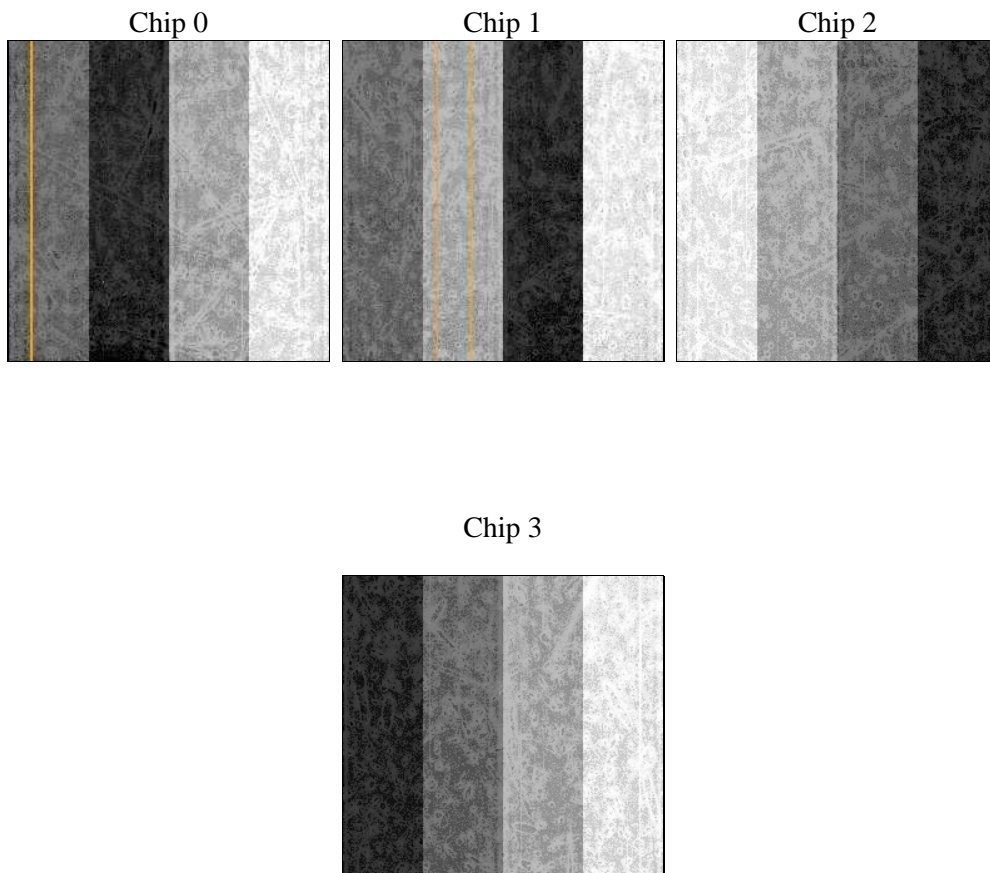
## 2 OBI

### 2.1 OBI

#### 2.1.1 Images



#### 2.1.2 Bias



### 2.1.3 Parameters

obi_num	1	Obi number	sched_exp_time	5000.000000	[s] Scheduled observation exposure time
ascdsver	8.4.3	Processing system revision	ontime	5090.2000391483	Sum of GTIs [s]
caldsver	4.4.8	&#160	ontime0	5090.1151614785	Sum of GTIs [s]
date	2012-03-26T06:23:32	Date and time of file creation	ontime1	5090.1562014818	Sum of GTIs [s]
revision	1	Processing version of data	ontime2	5090.1972414851	Sum of GTIs [s]
			ontime3	5090.2000391483	Sum of GTIs [s]
			l1events	110051	Number of level 1 events

### 2.1.4 Events

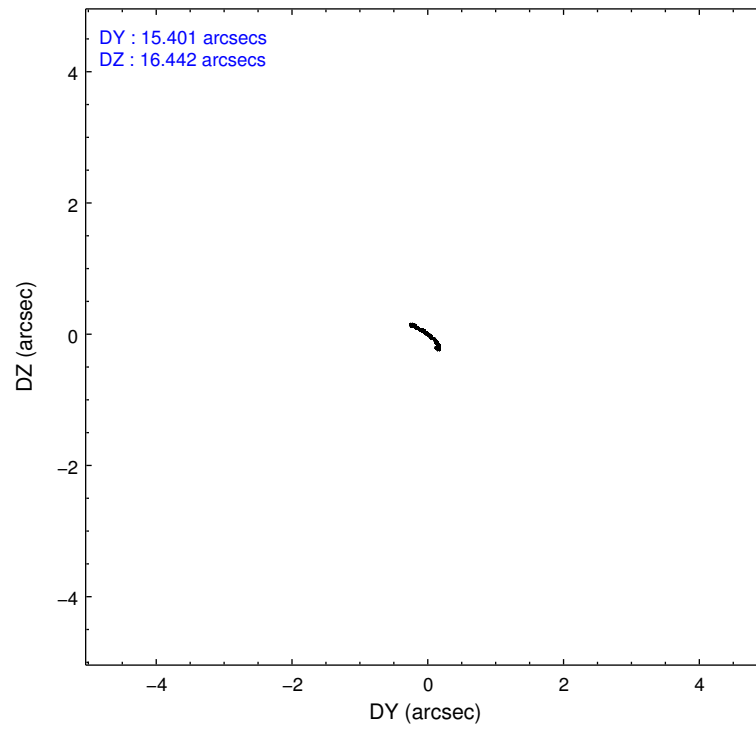
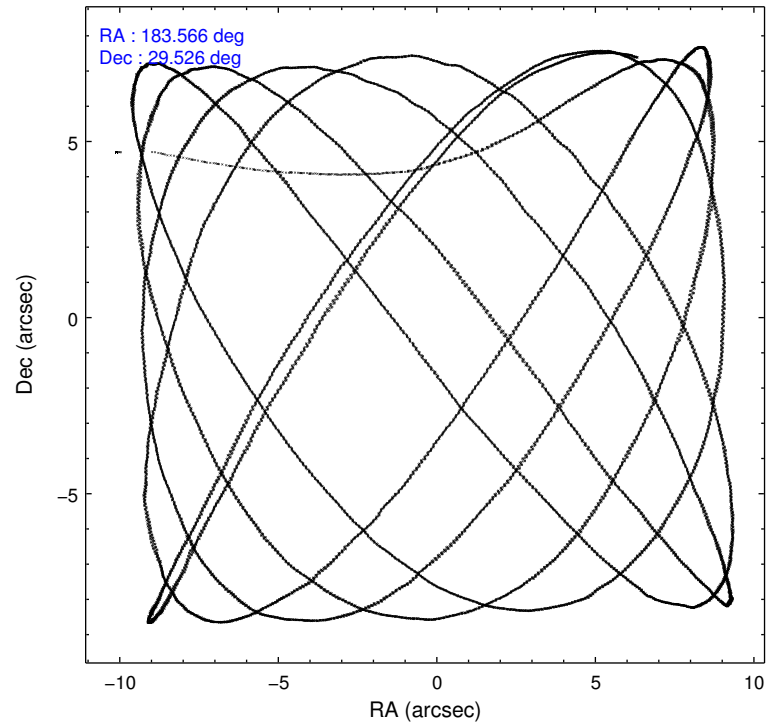
	ccd 0	ccd 1	ccd 2	ccd 3
level 1 events	24234	28283	28100	29434
rejected events	20781	23354	24795	25974
rejected %	85%	82%	88%	88%

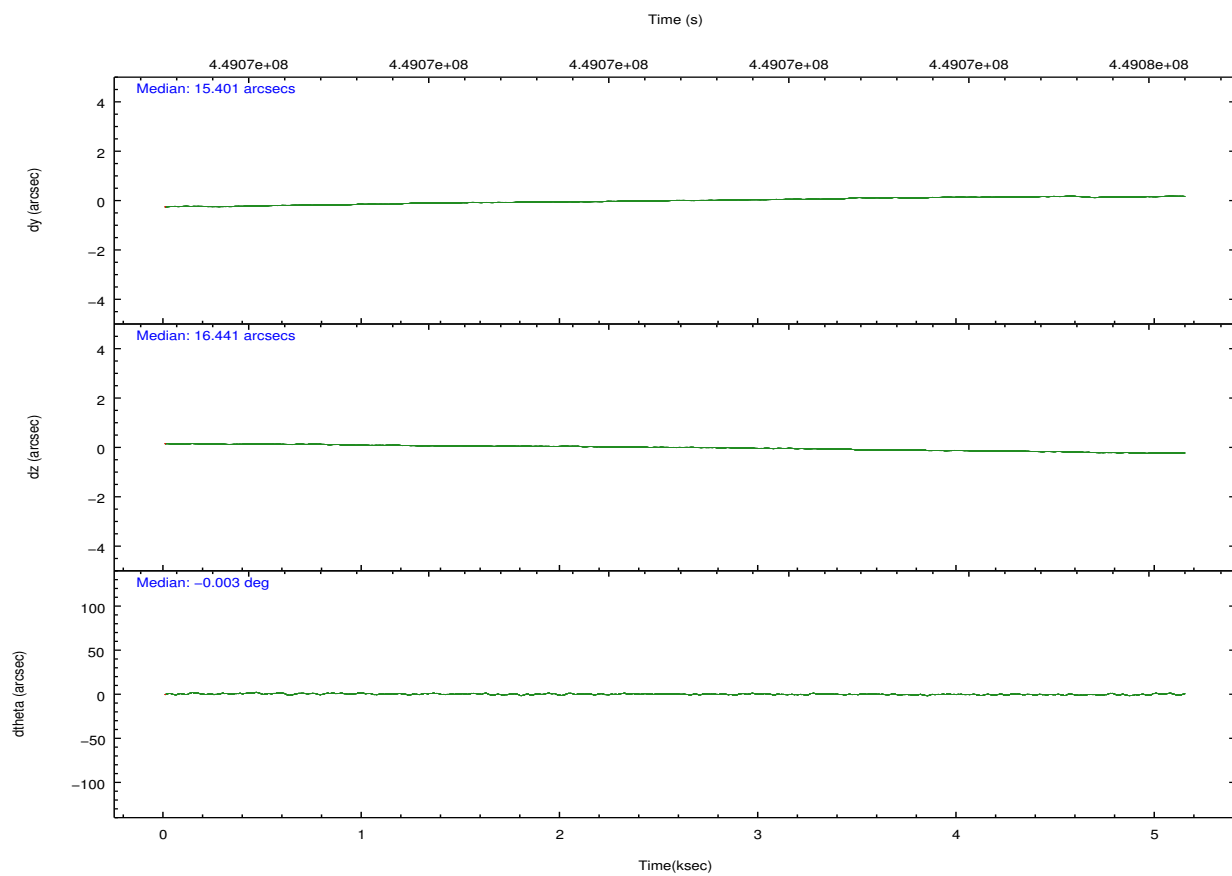
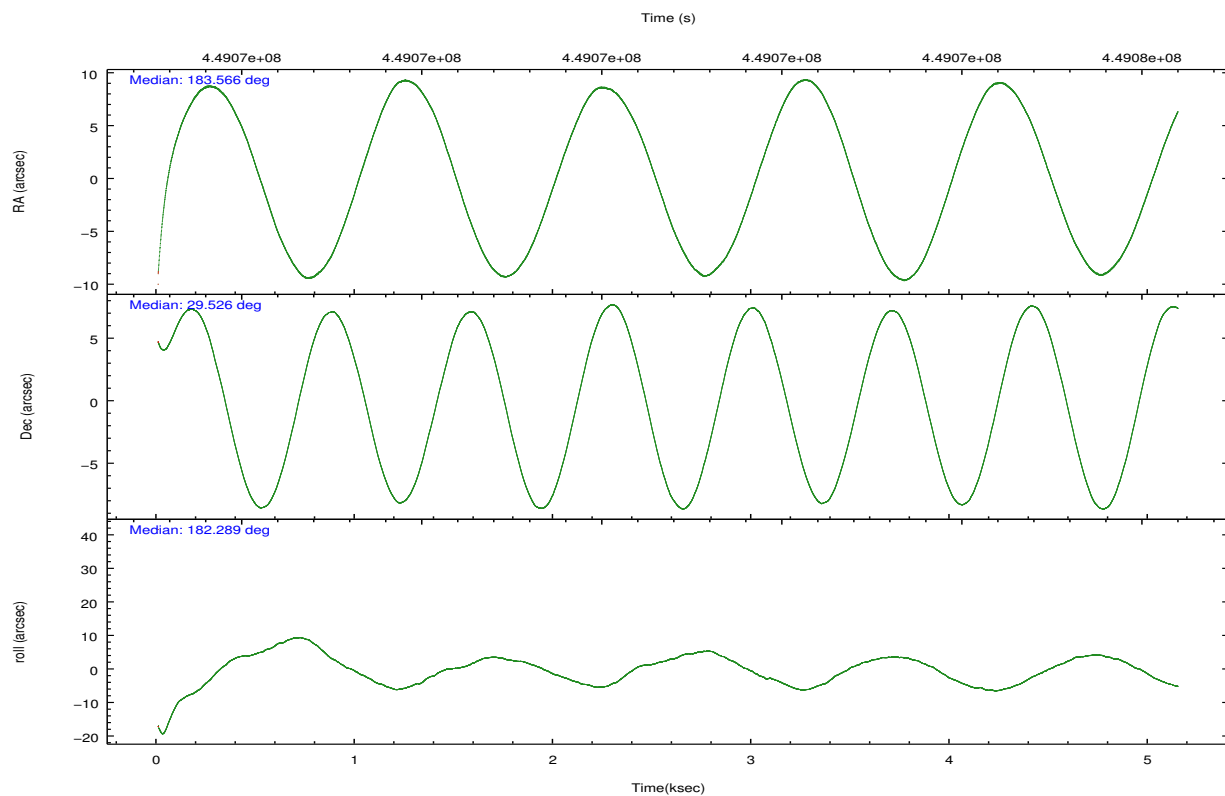
	ccd 0	ccd 1	ccd 2	ccd 3
grade 0 events	1254	2174	1172	1295
	5%	7%	4%	4%
grade 1 events	20	49	15	24
	0%	0%	0%	0%
grade 2 events	824	1064	779	730
	3%	3%	2%	2%
grade 3 events	366	401	355	370
	1%	1%	1%	1%
grade 4 events	316	396	347	377
	1%	1%	1%	1%
grade 5 events	1308	1400	1274	1433
	5%	4%	4%	4%
grade 6 events	694	894	653	691
	2%	3%	2%	2%
grade 7 events	19452	21905	23505	24514
	80%	77%	83%	83%

## 2.2 Compared Parameters

Parameter	Planned	Actual	Parameter	Planned	Actual
Instrument	ACIS	ACIS	Obspar format version number	7	7
Detector	ACIS-0123	ACIS-0123	Obspar file type	PREDICTED	ACTUAL
Grating	NONE	NONE	Obspar update status	NONE	UPDATED
Data mode	FAINT	FAINT	Number of optional ACIS chips dropped	0	0
Observation mode	POINTING	POINTING	On-chip summing requested	N	N
[deg] Pointing RA	183.592068	183.5654273995102	Subarray requested	NONE	NONE
[deg] Pointing Dec	29.540691	29.52593568159803	Alternating exposures requested	N	N
[deg] Pointing Roll	182.077473	182.299279005224	[s] Primary exposure time	0.000000	3.1
[mm] SIM focus pos	-0.782348	-0.7809083437167272			
[mm] SIM defocus	0	0.001439871863259334			
[mm] SIM translation stage pos	-233.592463	-233.5874344608287			
[mm] SIM translation stage offset	0	-0.005018542100998502			
[s] Observation start time (MET)	449069948.184000	449068827.70751			
Observation start date	2012-03-25T13:38:02	2012-03-25T13:20:27			
[s] Observation end time (MET)	449074948.184000	449075541.97037			
Observation end date	2012-03-25T15:01:22	2012-03-25T15:12:21			
Read mode	TIMED	TIMED			

## 2.3 Aspect



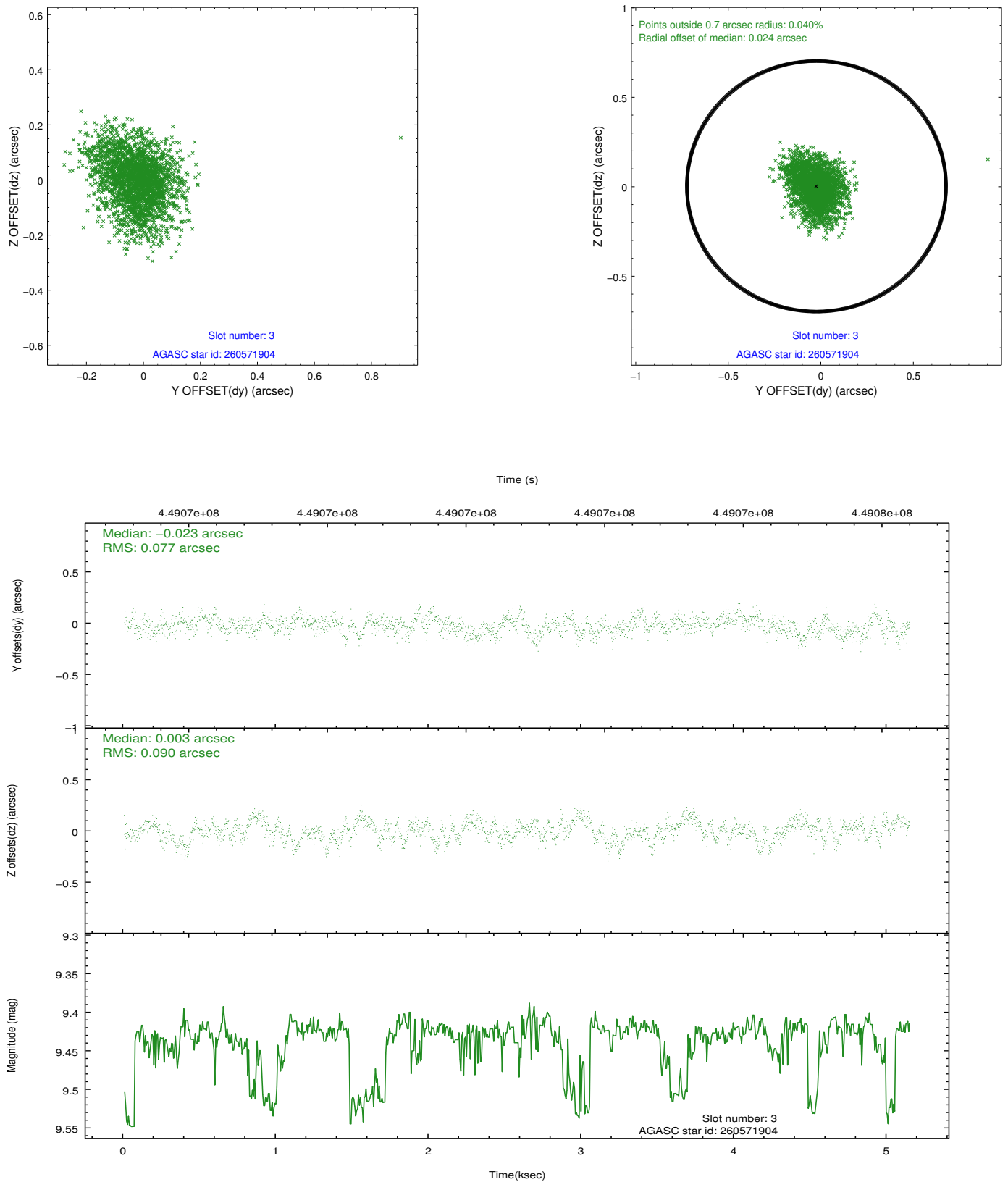


### Slot Statistics

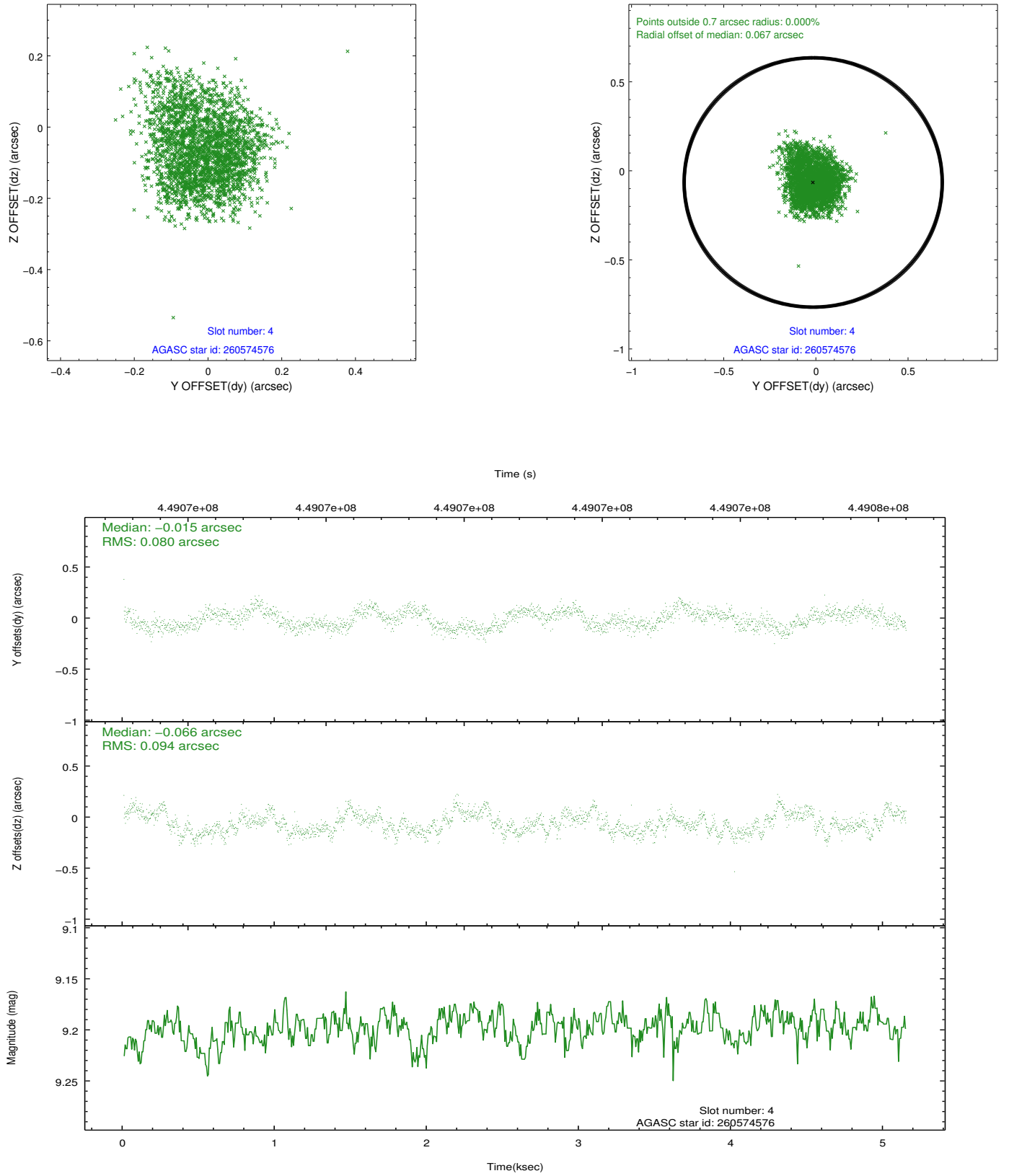
slot	status	id	mag	n_pts	med_dy	med_dz	dr1	dr2	ra	dec	mean_y	mean_z
0	FID	ACIS-I-2	6.95	1255	-0.102	-0.108	0.009	0.015	0.000000	0.000000	-770.20	-846.54
1	FID	ACIS-I-4	6.96	1255	0.191	0.089	0.006	0.010	0.000000	0.000000	2143.58	1059.27
2	FID	ACIS-I-5	7.03	1255	-0.189	0.088	0.009	0.015	0.000000	0.000000	-1822.64	1058.41
3	GUIDE	260571904	9.43	2495	-0.023	0.003	0.126	0.206	183.167466	29.996113	1265.72	-1686.98
4	GUIDE	260574576	9.20	2509	-0.015	-0.066	0.133	0.202	183.330803	29.256515	858.15	991.65
5	GUIDE	260575936	9.75	2499	-0.051	0.125	0.153	0.229	183.245488	29.822773	1045.61	-1054.60
6	GUIDE	260577264	9.53	2501	0.060	-0.071	0.112	0.179	183.832255	29.107902	-698.11	1583.40
7	GUIDE	331221464	8.36	2506	0.031	0.021	0.101	0.148	183.756088	30.141497	-588.30	-2142.61

## 2.4 Star Slots

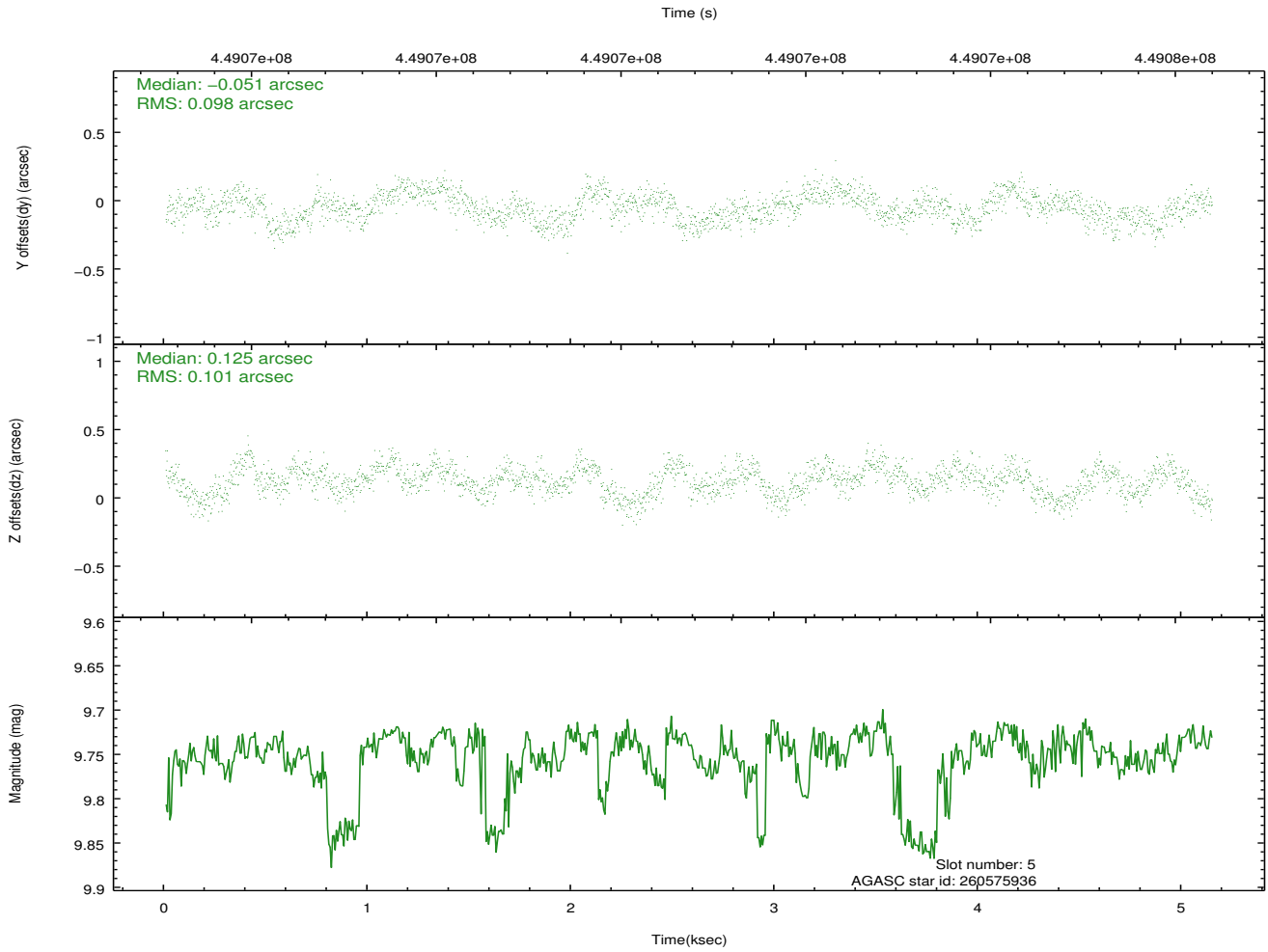
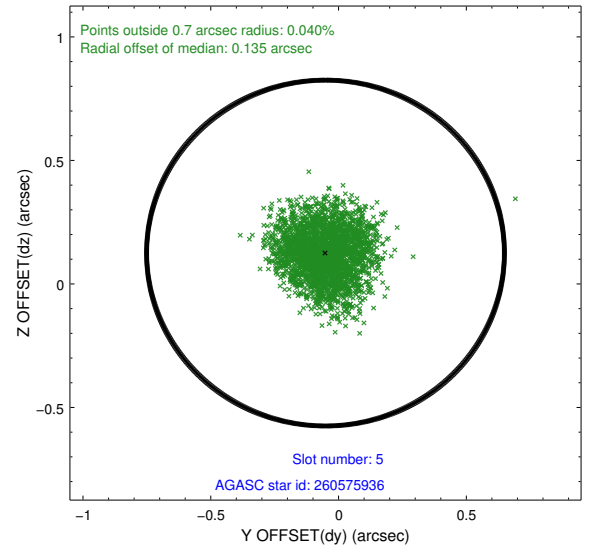
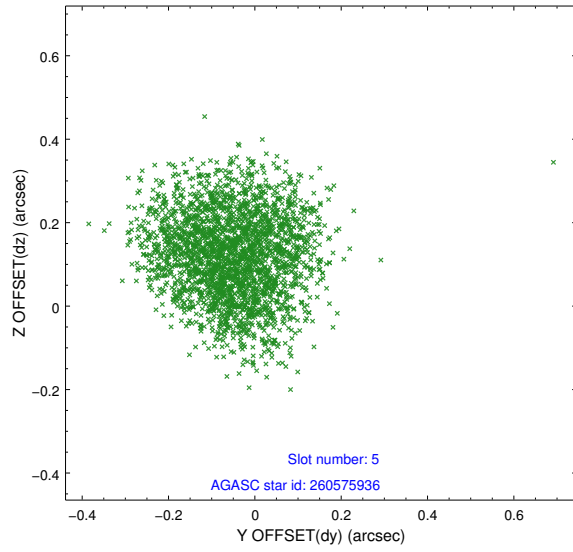
### 2.4.1 Slot 3



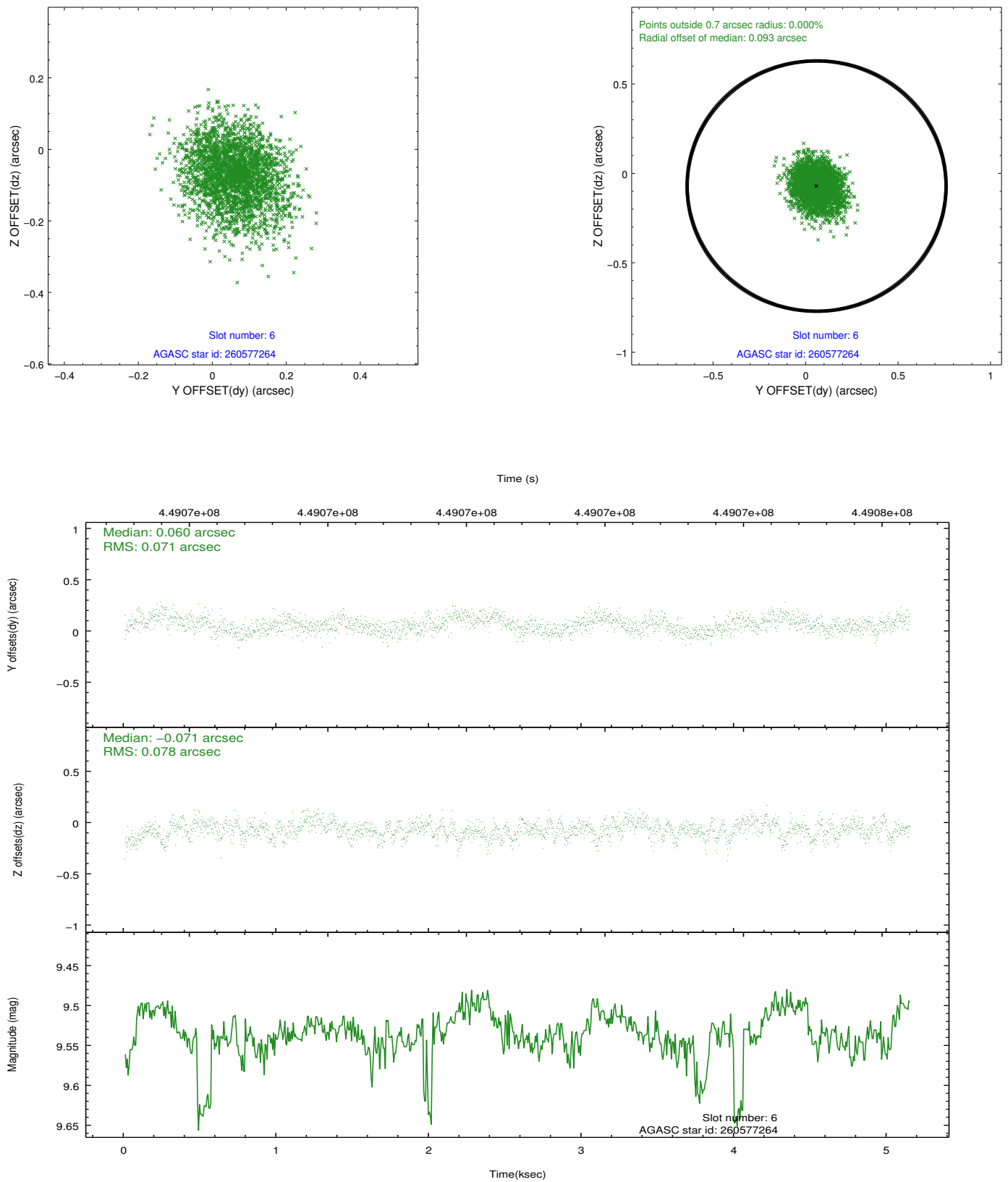
## 2.4.2 Slot 4



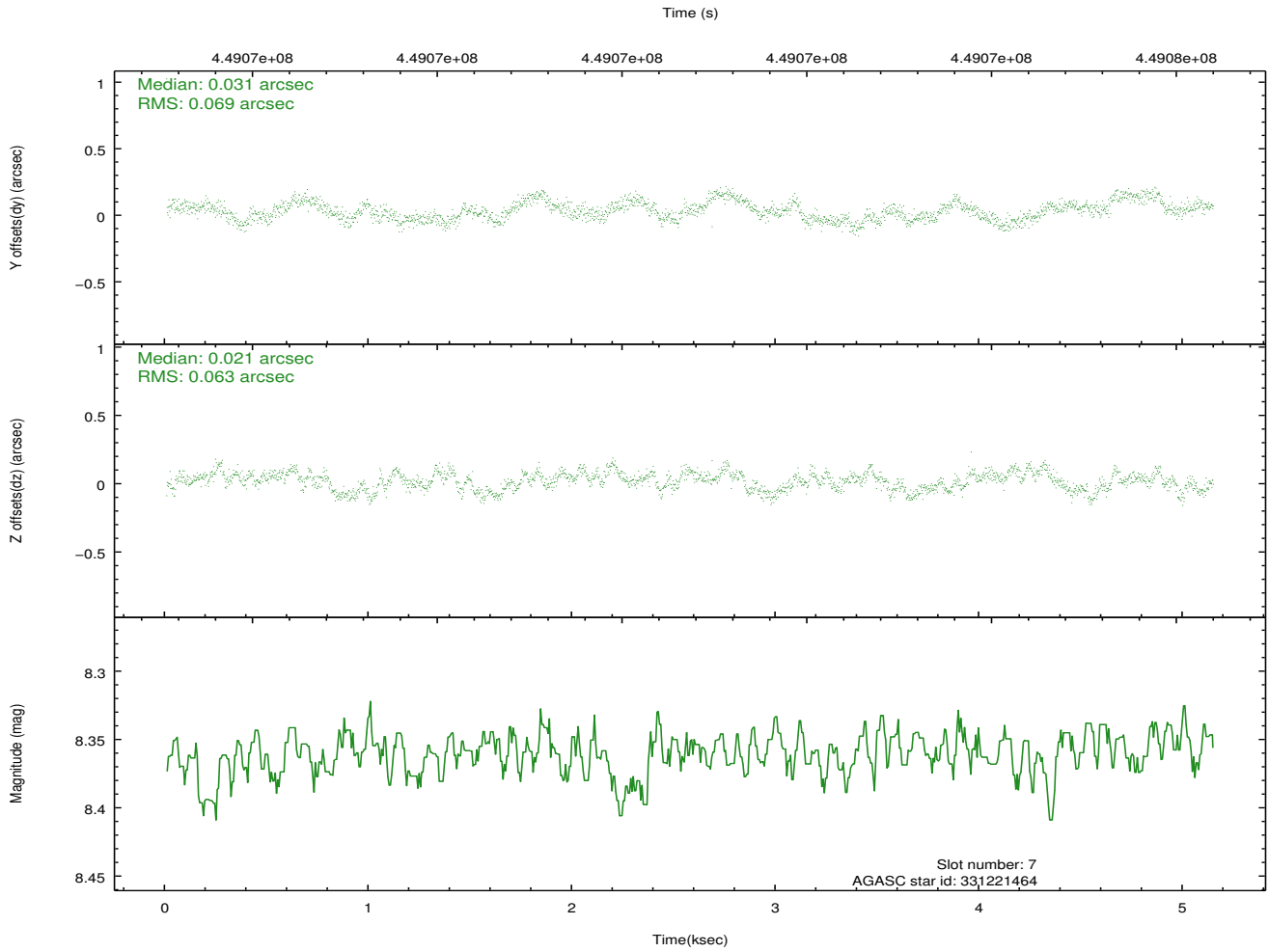
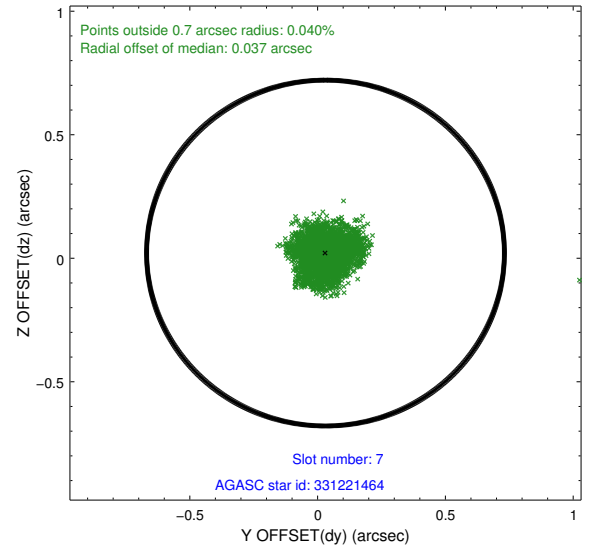
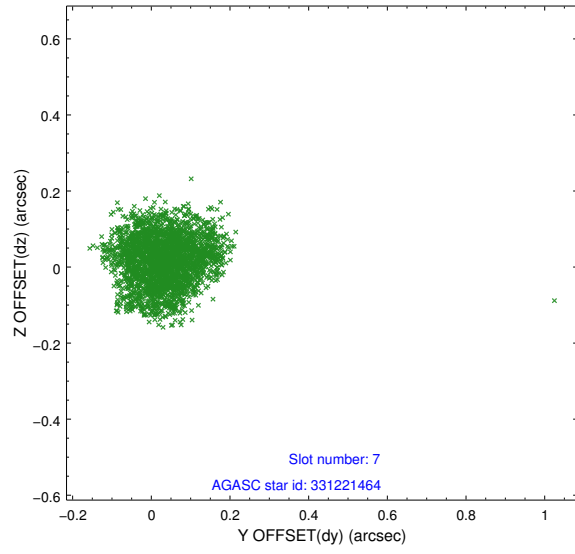
### 2.4.3 Slot 5



## 2.4.4 Slot 6

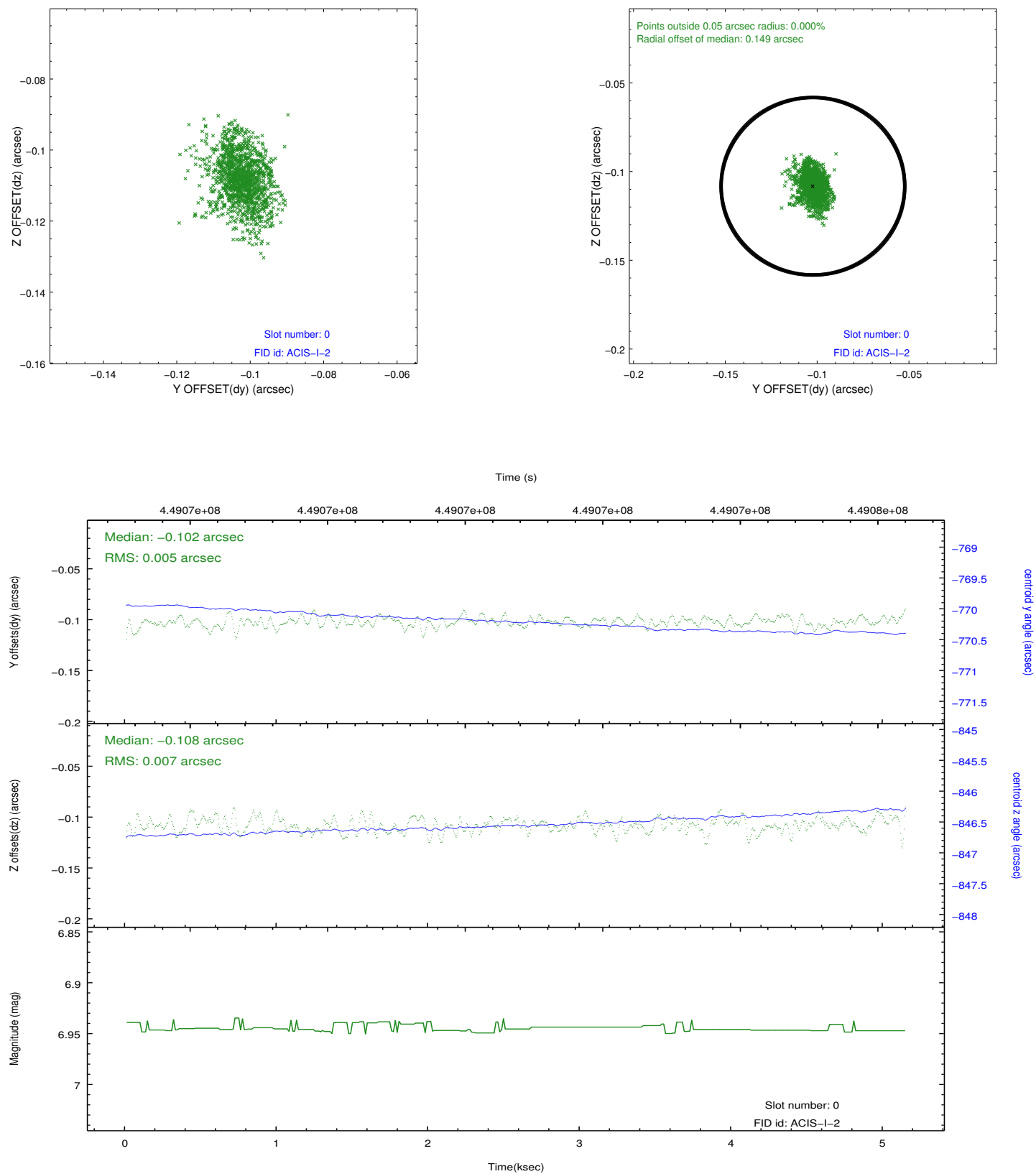


## 2.4.5 Slot 7

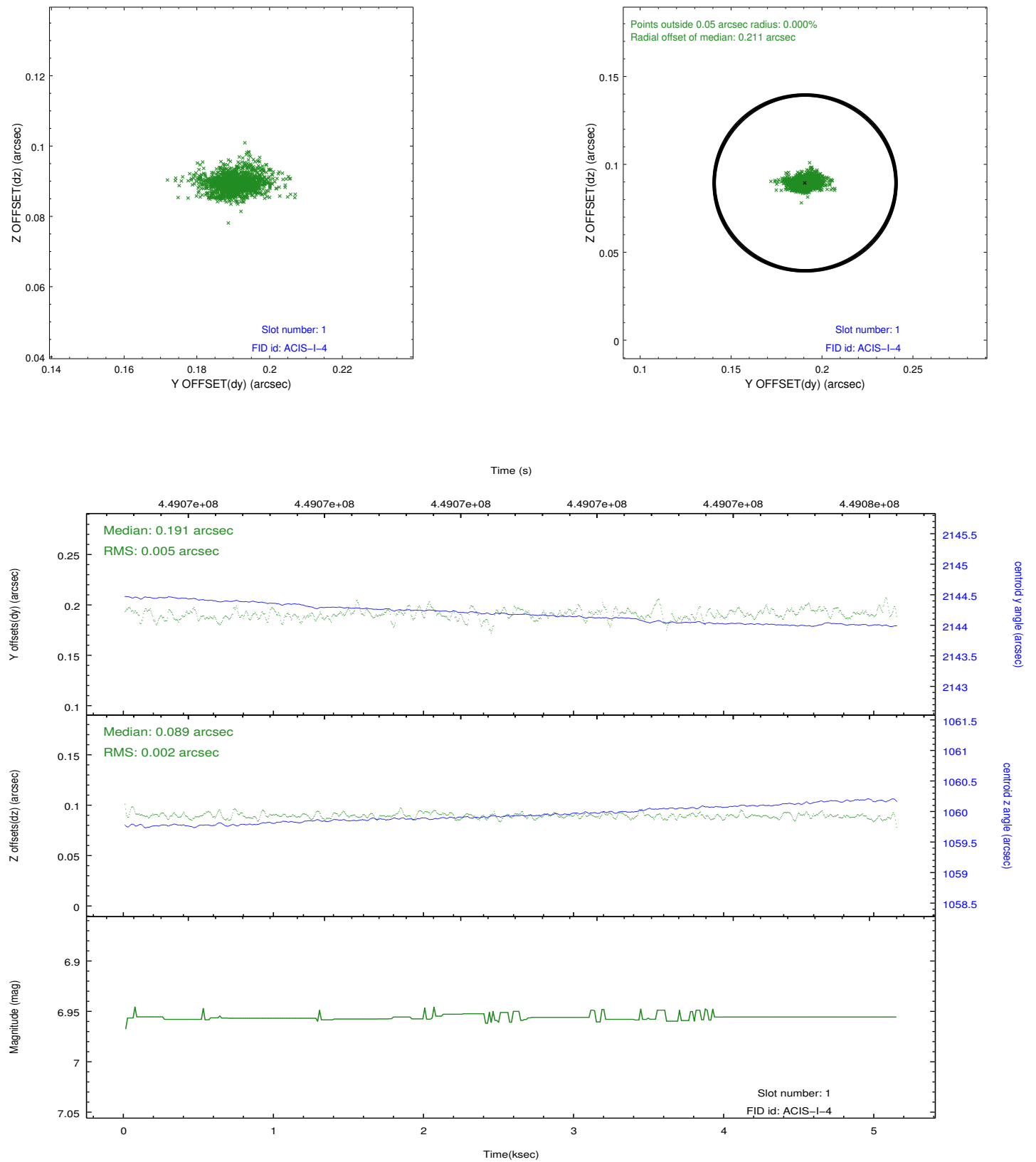


## 2.5 FID Slots

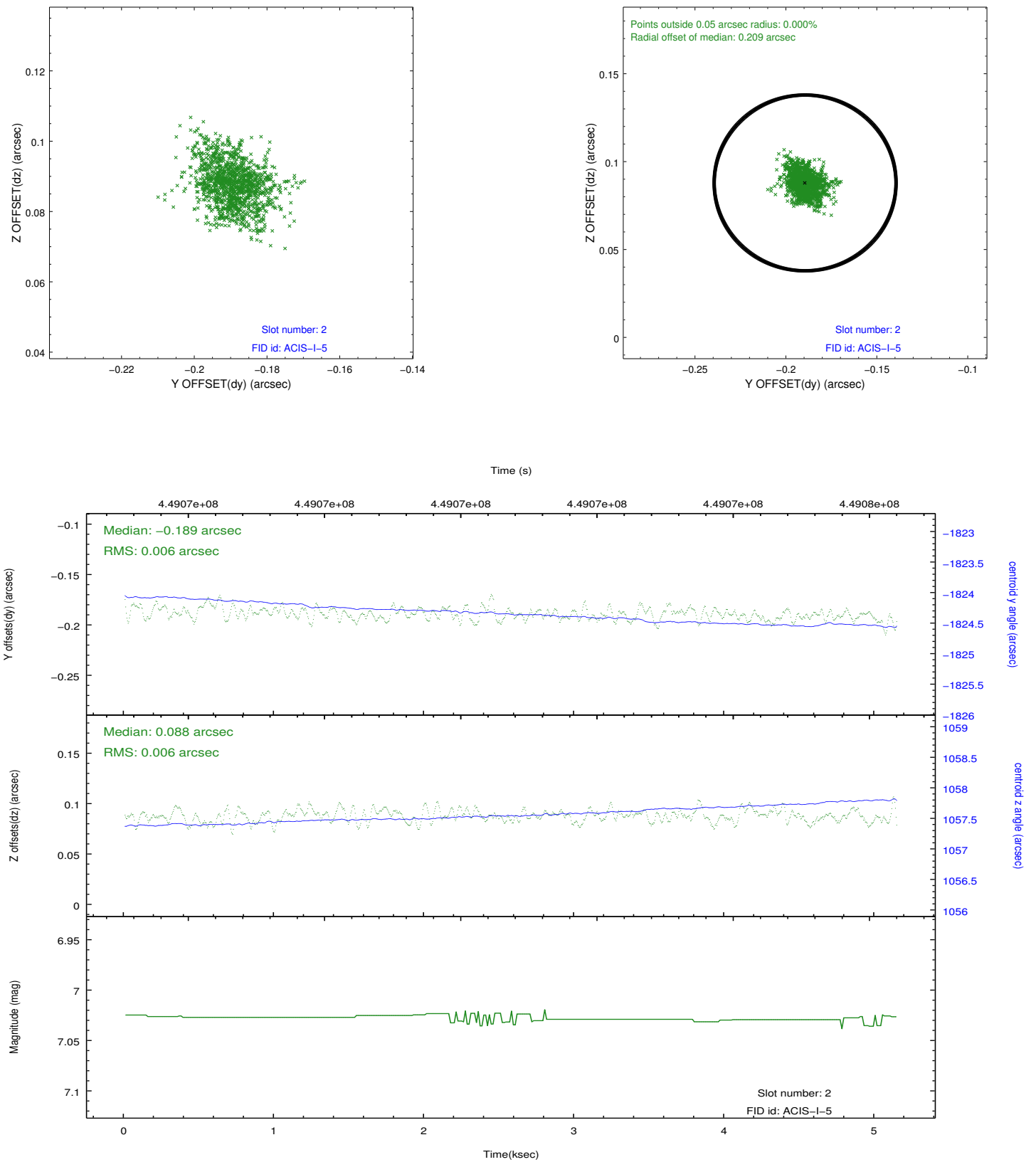
### 2.5.1 Slot 0



## 2.5.2 Slot 1



### 2.5.3 Slot 2



## A Summary

### A.1 Status

V&V Scientist	Joy Nichols
V&V Date (YYYY-MM-DD)	2012.03.26
V&V Edition	1
V&V Disposition and Status	OK
V&V Charge Time	5.0902000391483

### A.2 Comments