

V&V Reference Report

L2 ASCDS Version : 8.4.3

Observation 13292 - L2 Version 5
Chandra X-Ray Center

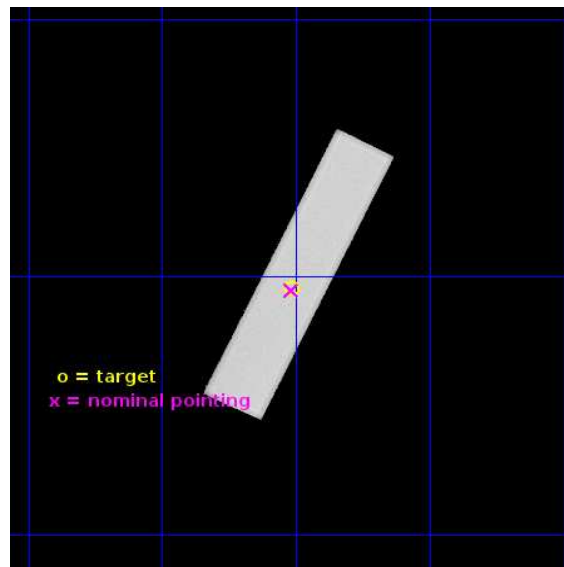
L2 Processing Date : Jun 29 2013

Contents

1	Front	2
2	OBI	3
2.1	OBI	3
2.1.1	Images	3
2.1.2	Parameters	4
2.1.3	Events	4
2.2	Compared Parameters	5
2.3	Aspect	6
2.4	Star Slots	9
2.4.1	Slot 3	9
2.4.2	Slot 4	10
2.4.3	Slot 5	11
2.4.4	Slot 6	12
2.4.5	Slot 7	13
2.5	FID Slots	14
2.5.1	Slot 0	14
2.5.2	Slot 1	15
2.5.3	Slot 2	16
A	Summary	17
A.1	Status	17
A.2	Comments	17

1 Front

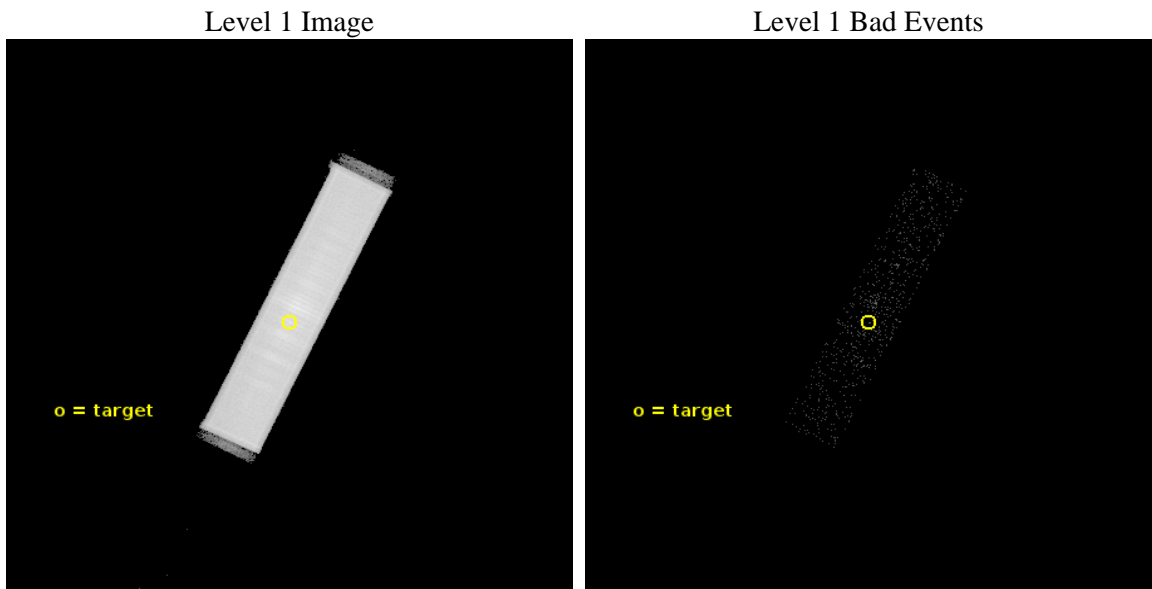
seq_num	501560	Sequence number
obs_id	13292	Observation id
title	A timing and spectral imaging observation of the soft gamma-ray pulsar IGR J18490-0000	Proposal title
observer	Dr Jelle Kaastra	Principal investigator
object	IGR J18490-0000	Source name
ra_targ	282.256667	Observer's specified target RA [deg]
dec_targ	-0.021583	Observer's specified target Dec [deg]
ra_nom	282.25865522509	Nominal RA [deg]
dec_nom	-0.025880586818393	Nominal Dec [deg]
roll_nom	295.90168628403	Nominal Roll [deg]
revision	5	Processing version of data
ontime	25187.582576692	[s]
livetime	25090.312797194	Ontime multiplied by DTCOR
l2events	1059230	Number of level 2 events



2 OBI

2.1 OBI

2.1.1 Images



2.1.2 Parameters

obi_num	1	Obi number	sched_exp_time	25000.000000	[s] Scheduled observation exposure time
ascdsver	10	Processing system revision	ontime	25187.582576692	[s]
caldsver	4.5.7	 	l1events	1485890	Number of level 1 events
date	2013-06-29T05:23:50	Date and time of file creation			
revision	5	Processing version of data			

2.1.3 Events

Level 1 Events

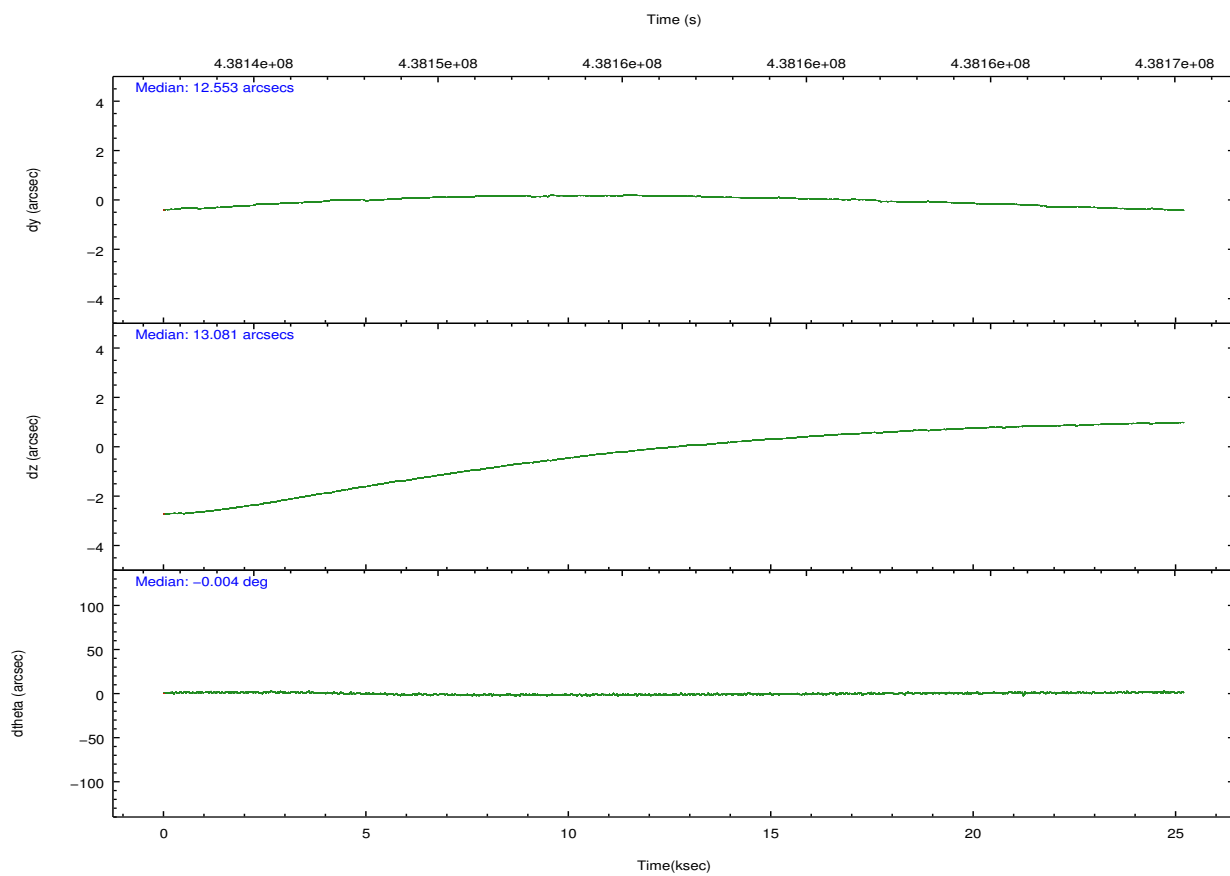
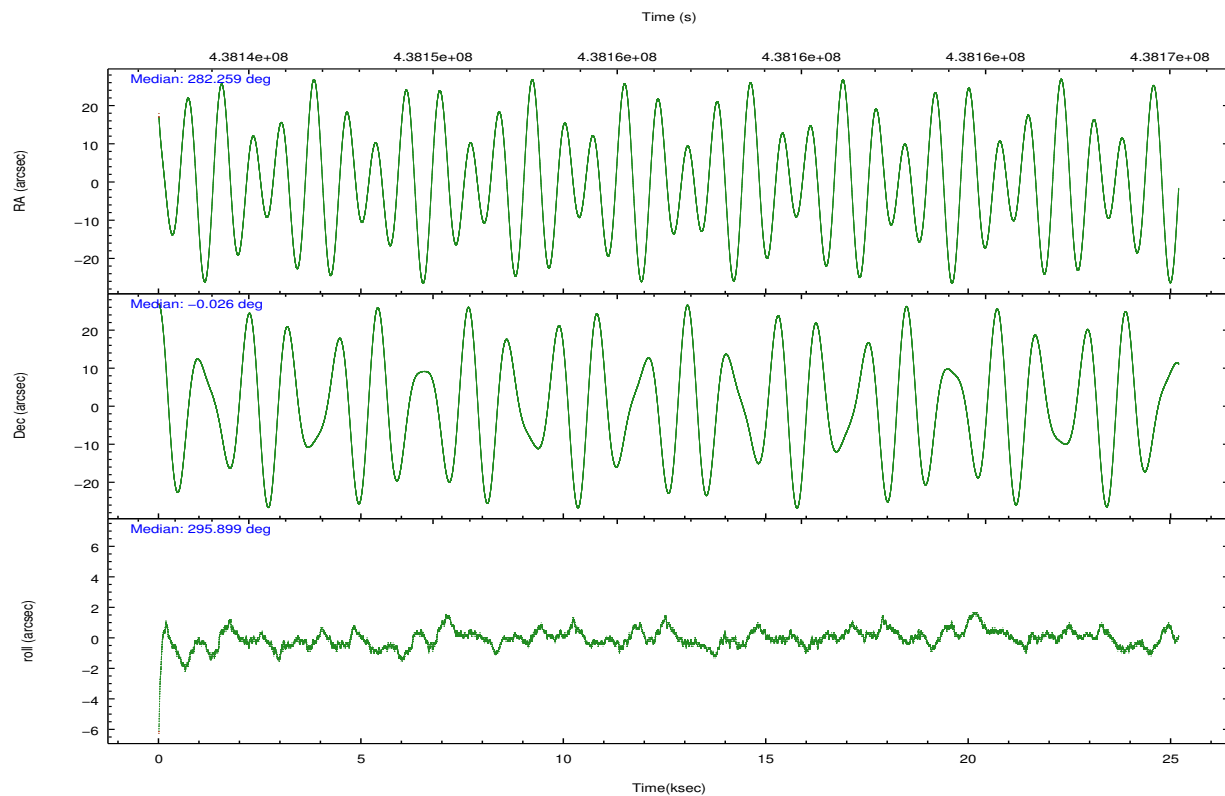
	segment 1	segment 2	segment 3
level 1 events	1606	1484277	7
rejected events	65	66215	4
rejected %	4%	4%	57%

2.2 Compared Parameters

Parameter	Planned	Actual
Instrument	HRC	HRC
Detector	HRC-S	HRC-S
Grating	NONE	NONE
Data mode	OBSERVING	OBSERVING
Observation mode	POINTING	POINTING
[deg] Pointing RA	282.234139	282.2586552250853
[deg] Pointing Dec	-0.011010	-0.02588058681839273
[deg] Pointing Roll	295.834353	295.9016862840262
[mm] SIM focus pos	-1.533336	-1.526339935833849
[mm] SIM defocus	7.710433287538843e-07	0.006996703570447904
[mm] SIM translation stage pos	250.455976	250.466033080201
[mm] SIM translation stage offset	0	-0.01005468664627074
[s] Observation start time (MET)	438144008.184000	438142735.07983
Observation start date	2011-11-20T02:39:02	2011-11-20T02:18:55
[s] Observation end time (MET)	438169008.184000	438170078.49377
Observation end date	2011-11-20T09:35:42	2011-11-20T09:54:38

Parameter	Planned	Actual
Obspar format version number	7	7
Obspar file type	PREDICTED	ACTUAL
Obspar update status	NONE	UPDATED

2.3 Aspect

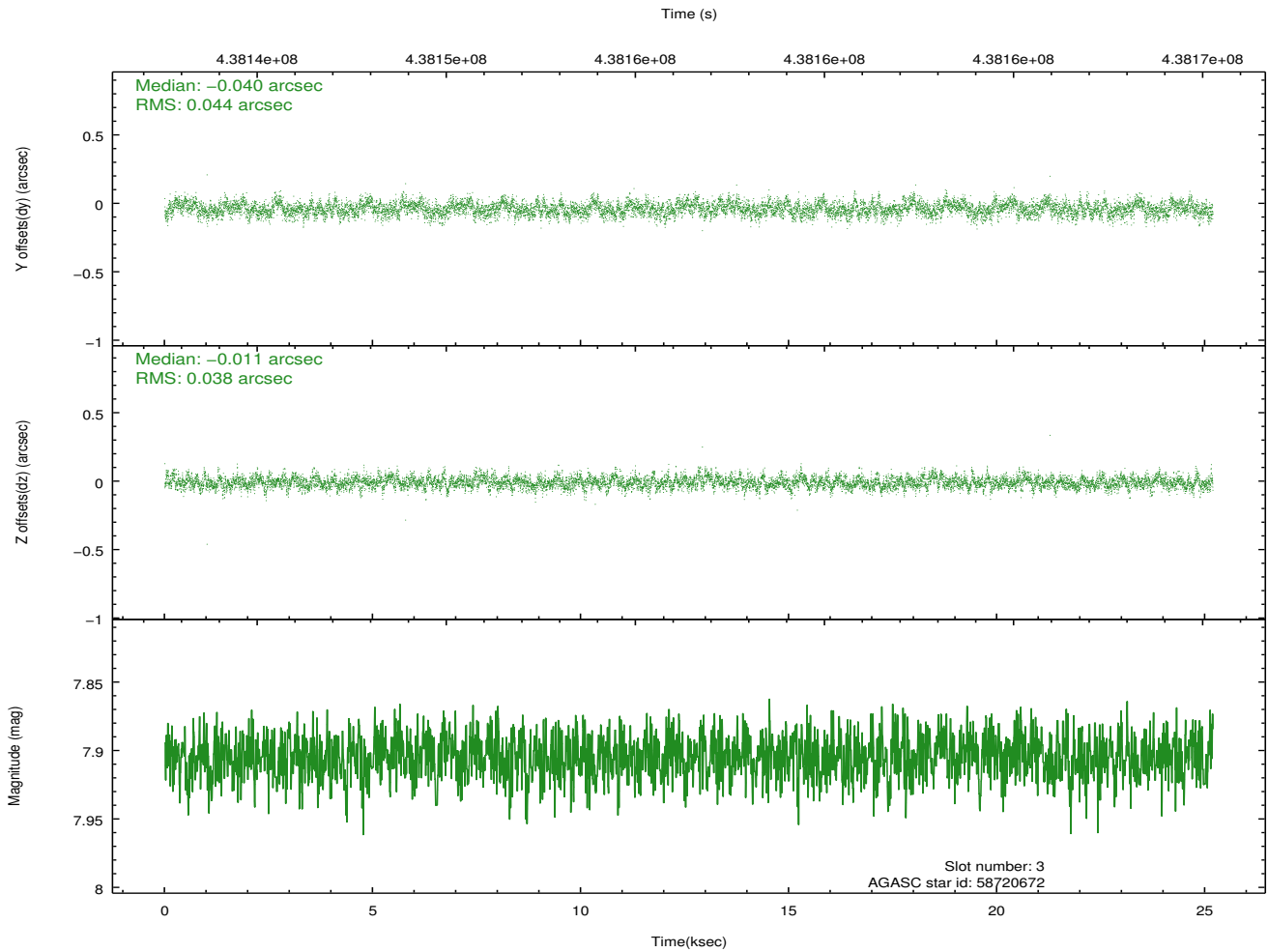
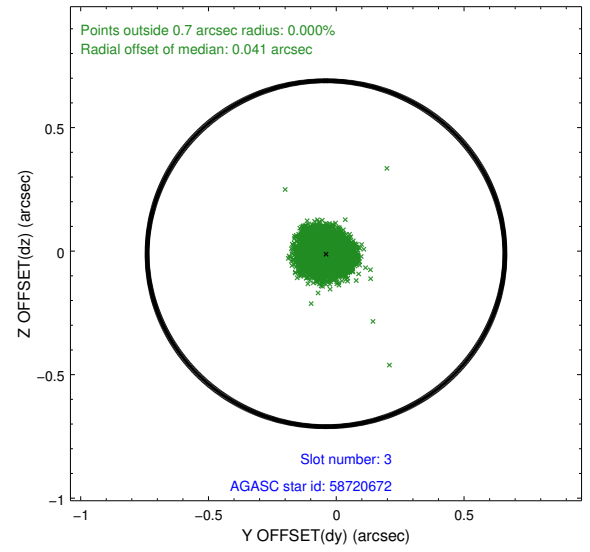
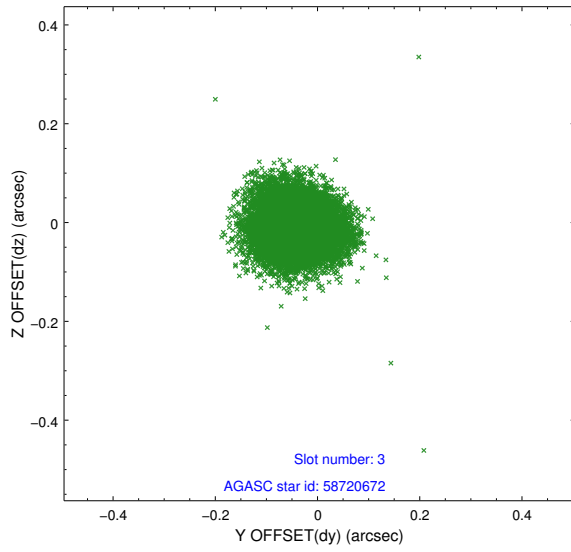


Slot Statistics

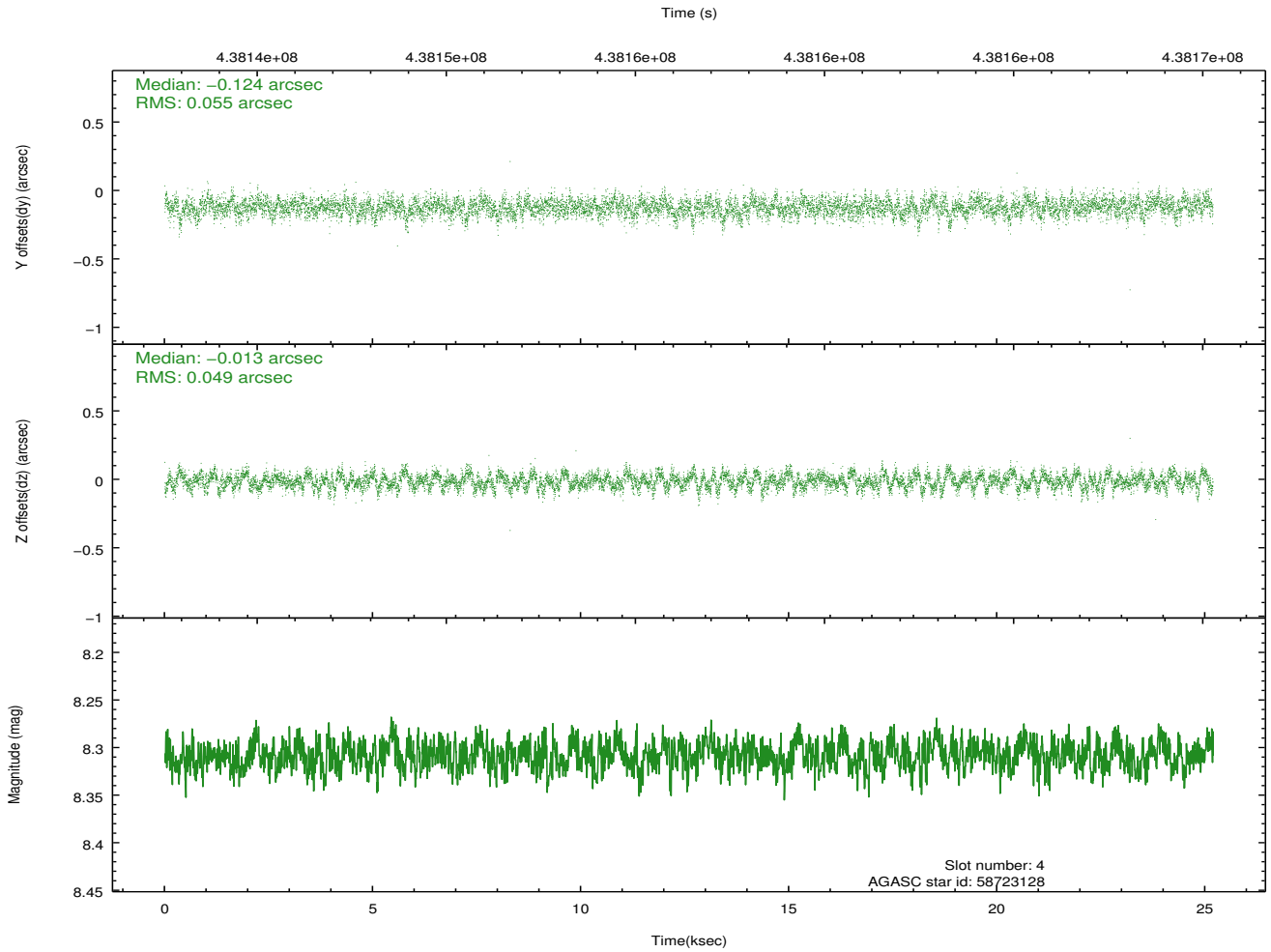
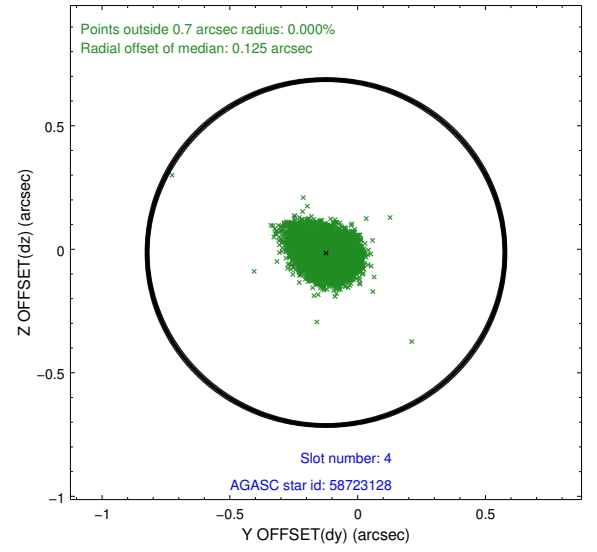
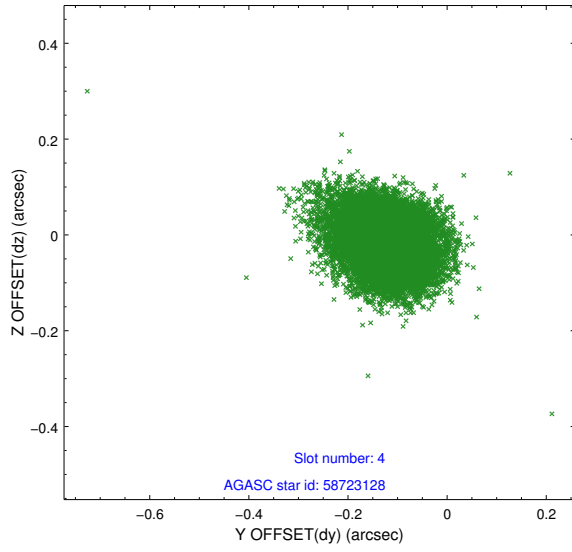
slot	status	id	mag	n_pts	med_dy	med_dz	dr1	dr2	ra	dec	mean_y	mean_z
0	FID	HRC-S-1	6.97	6143	0.052	-0.144	0.023	0.037	0.000000	0.000000	-1166.86	-461.48
1	FID	HRC-S-2	6.96	6144	0.275	-0.129	0.010	0.023	0.000000	0.000000	1232.83	-454.17
2	FID	HRC-S-3	6.98	6144	0.062	-0.028	0.028	0.041	0.000000	0.000000	-1169.38	568.07
3	GUIDE	58720672	7.90	12287	-0.040	-0.011	0.062	0.100	282.585114	0.078732	260.06	1278.22
4	GUIDE	58723128	8.31	12284	-0.124	-0.013	0.078	0.126	282.171155	0.522968	-1828.38	633.94
5	GUIDE	670303120	8.55	12282	0.166	0.140	0.081	0.126	283.028951	-0.220247	1925.39	2247.68
6	GUIDE	670303584	7.51	12287	-0.049	-0.082	0.063	0.098	282.662062	-0.360708	1804.81	838.70
7	GUIDE	670309376	8.26	12286	0.048	-0.035	0.077	0.125	281.935099	-0.236180	260.44	-1322.09

2.4 Star Slots

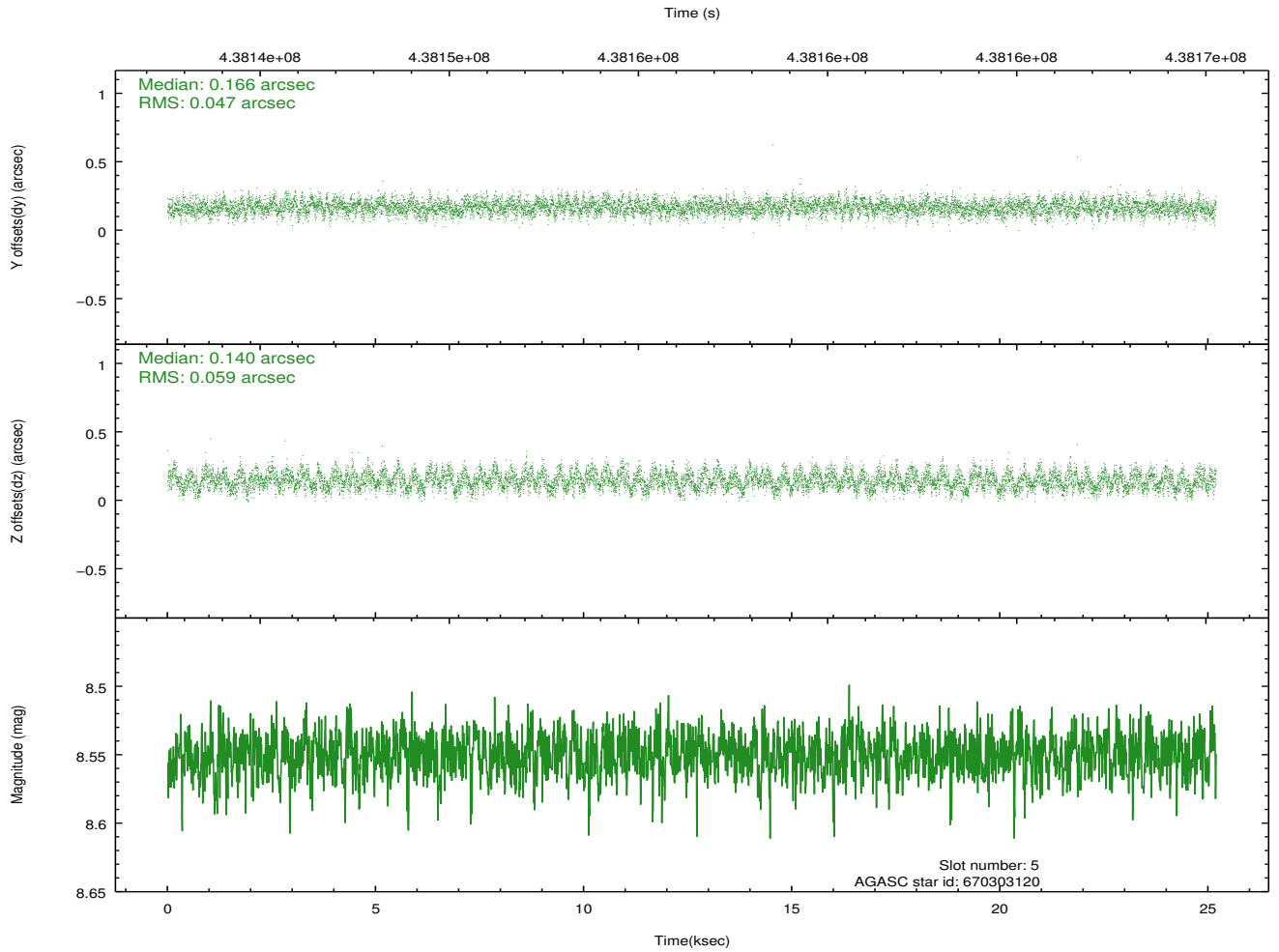
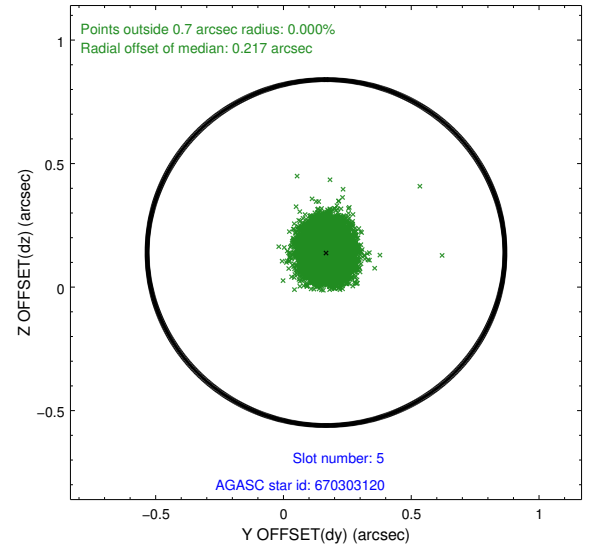
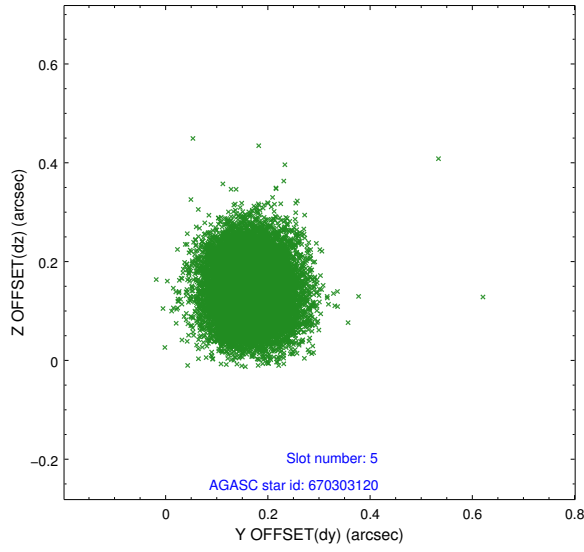
2.4.1 Slot 3



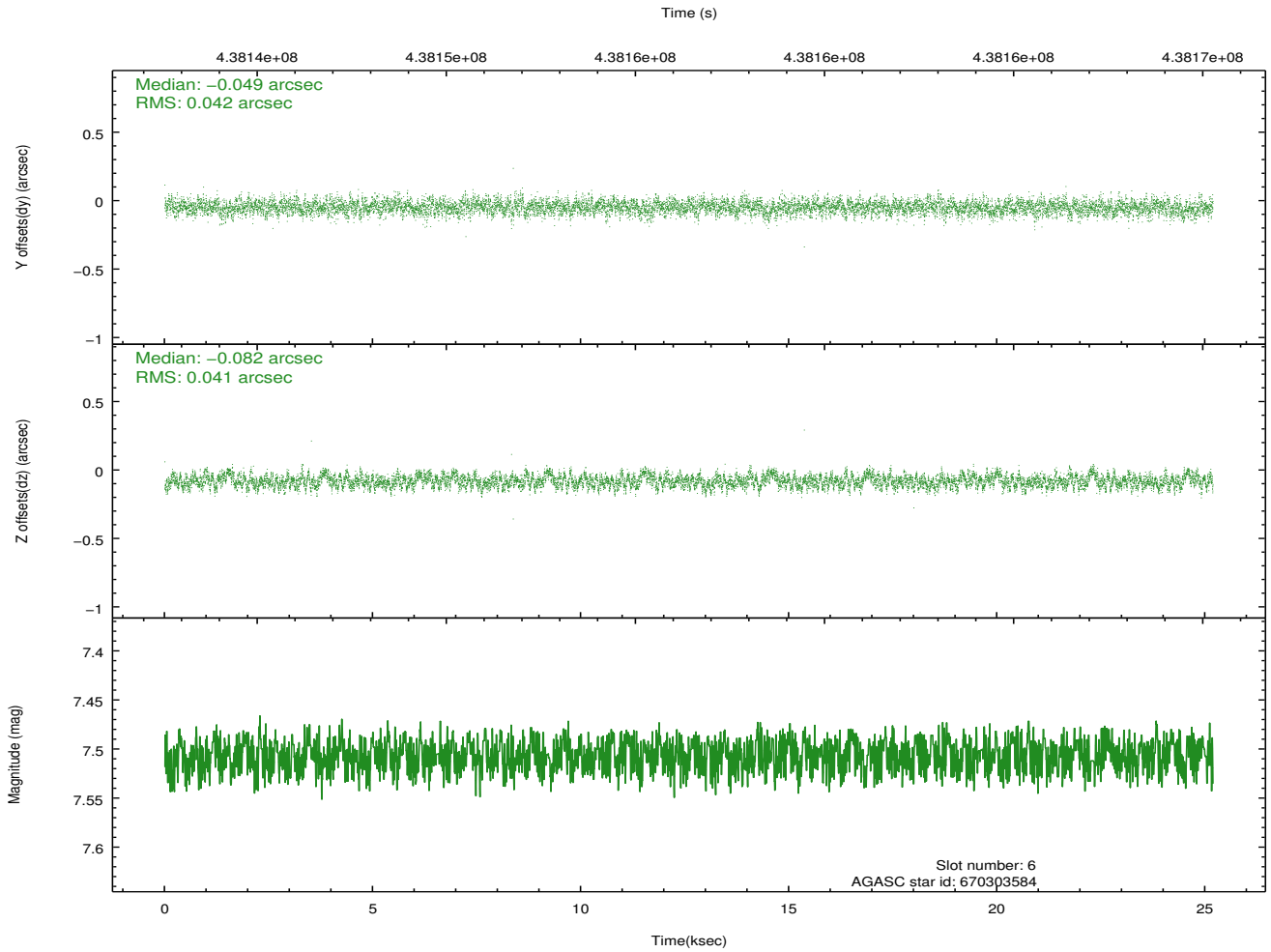
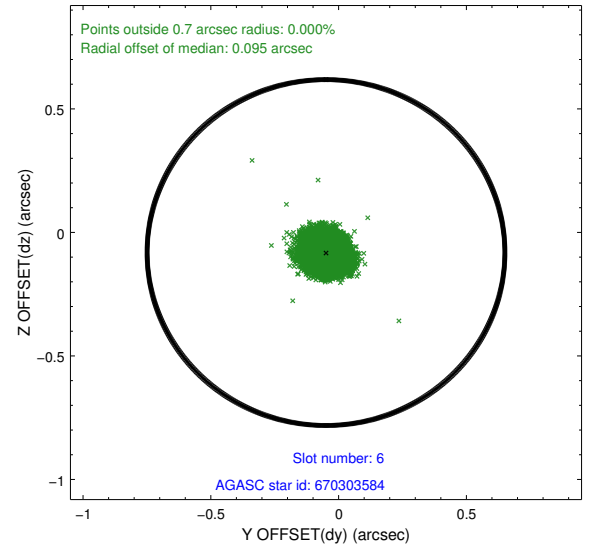
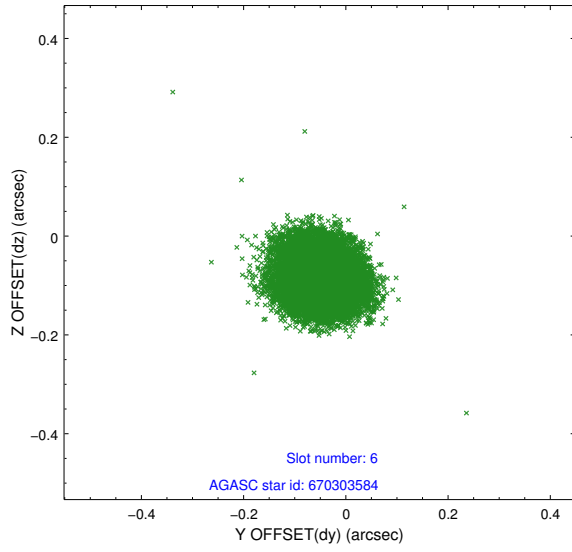
2.4.2 Slot 4



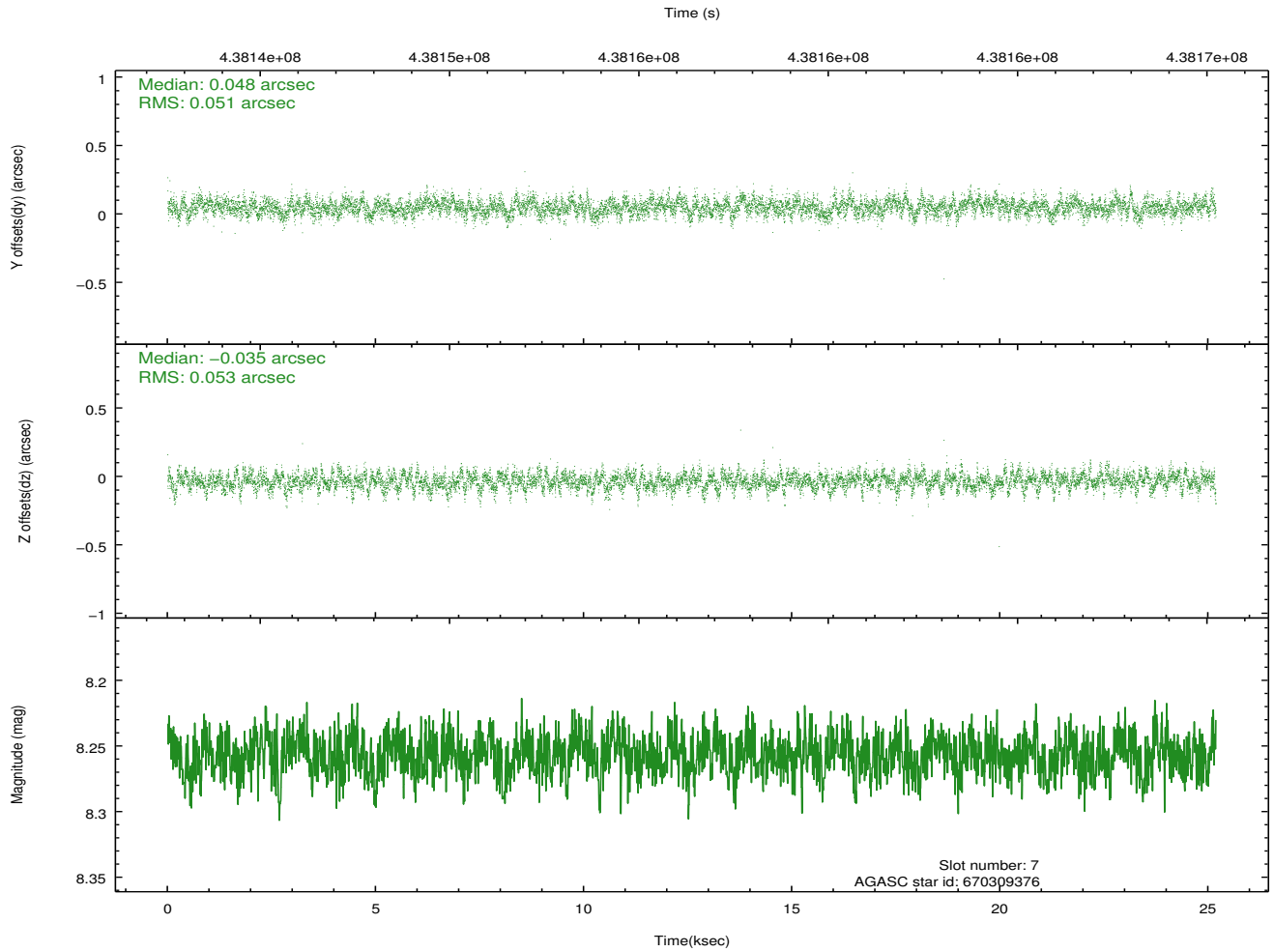
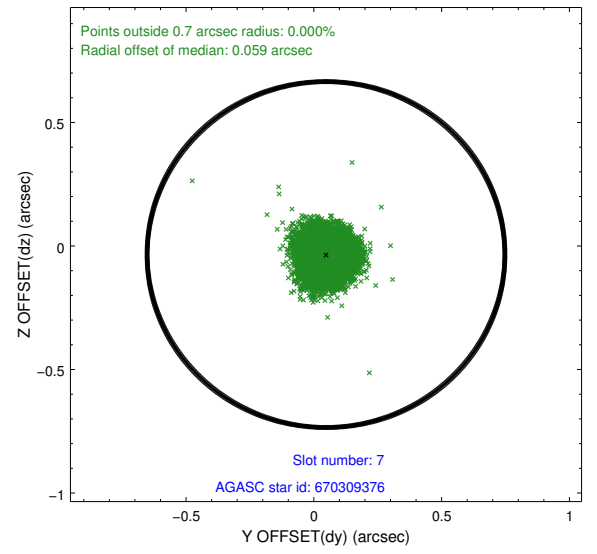
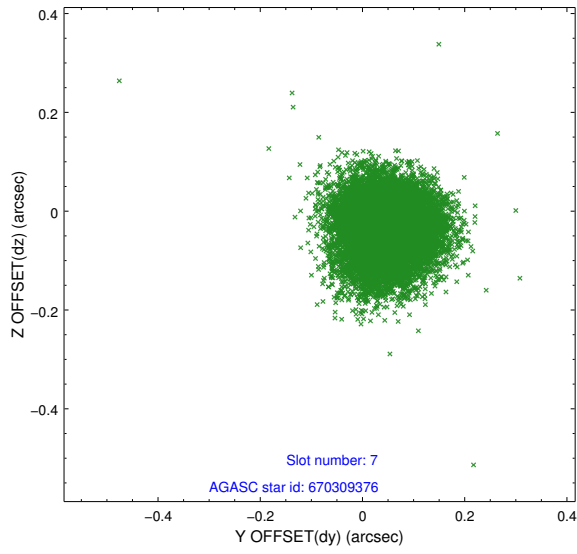
2.4.3 Slot 5



2.4.4 Slot 6

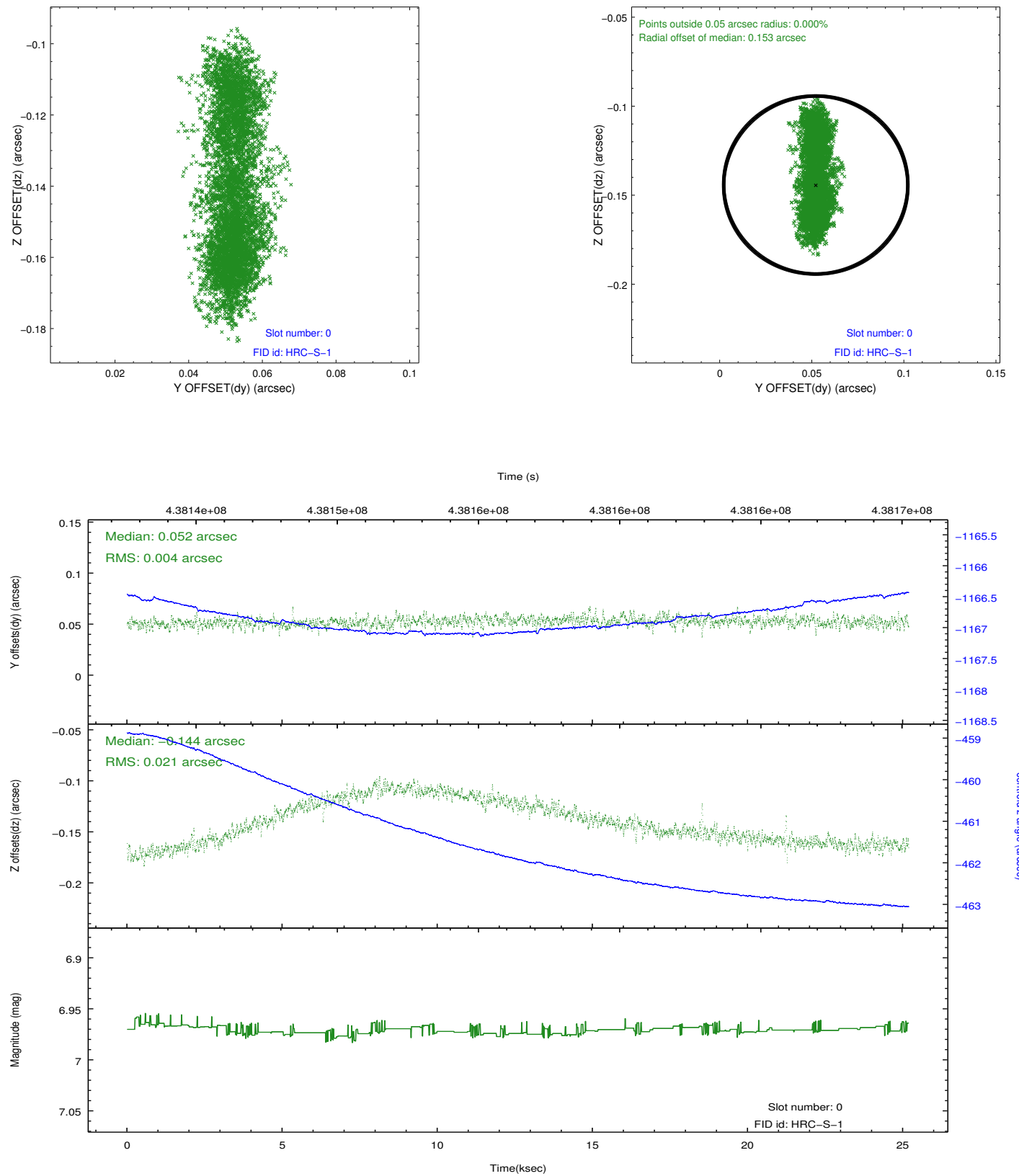


2.4.5 Slot 7

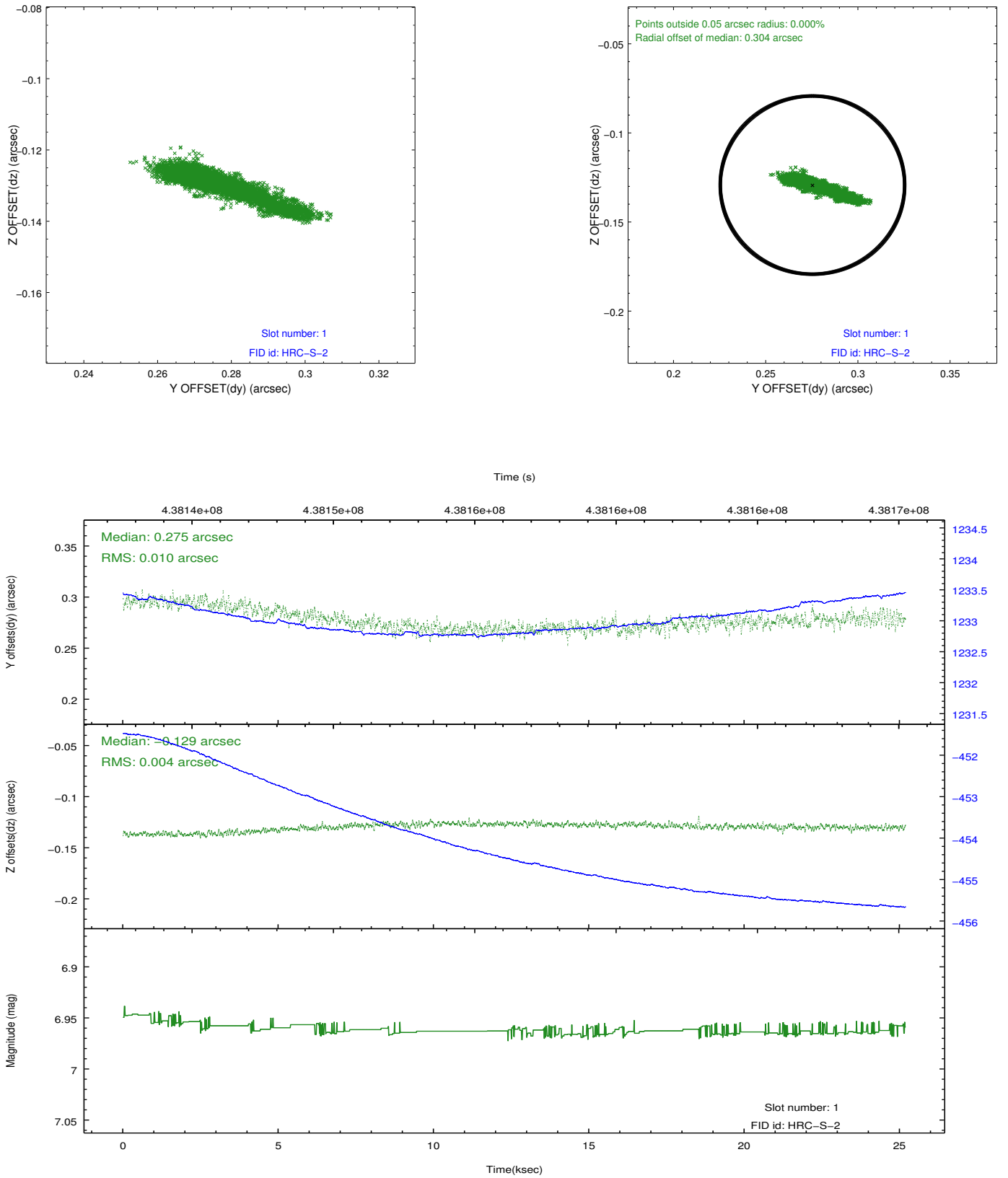


2.5 FID Slots

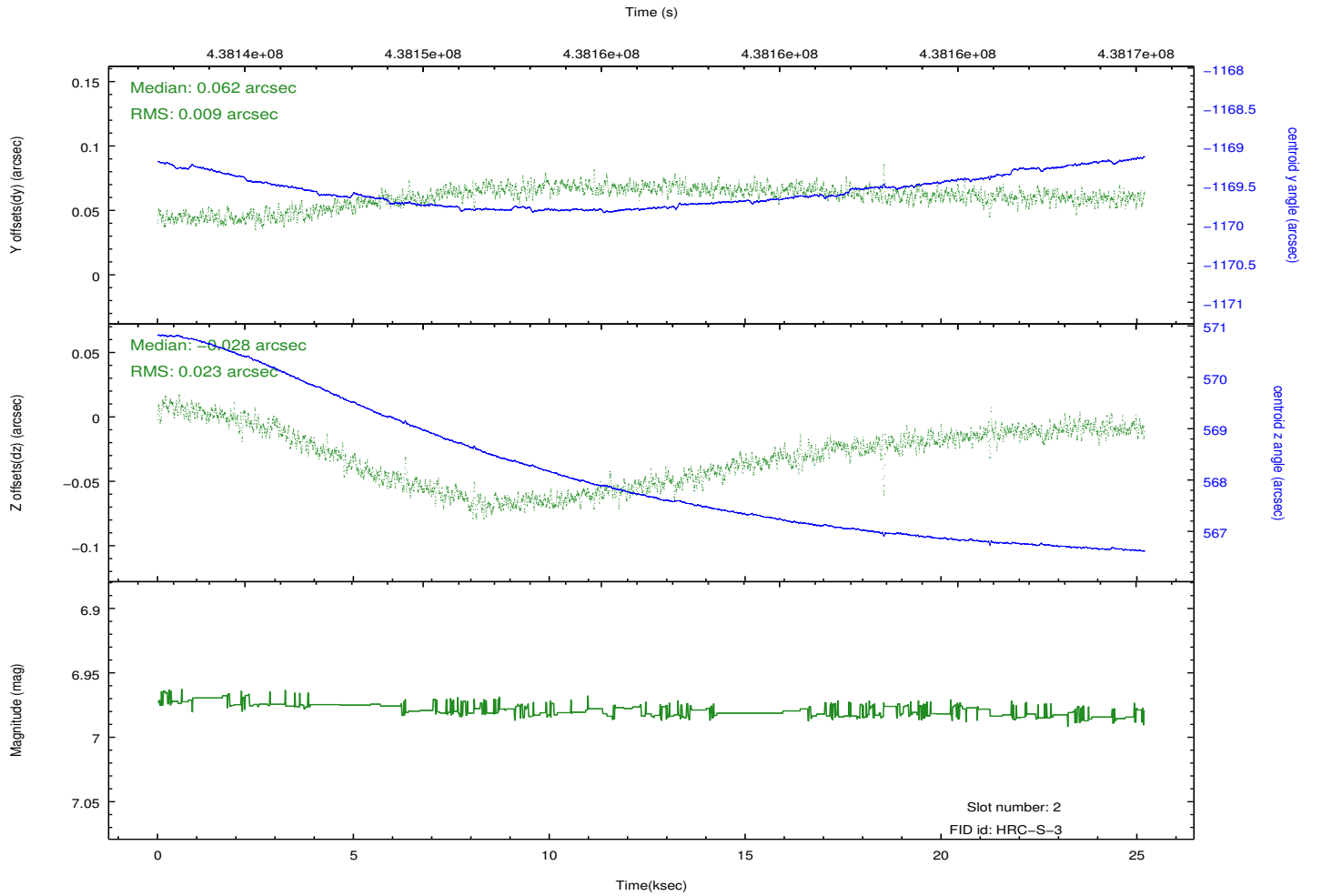
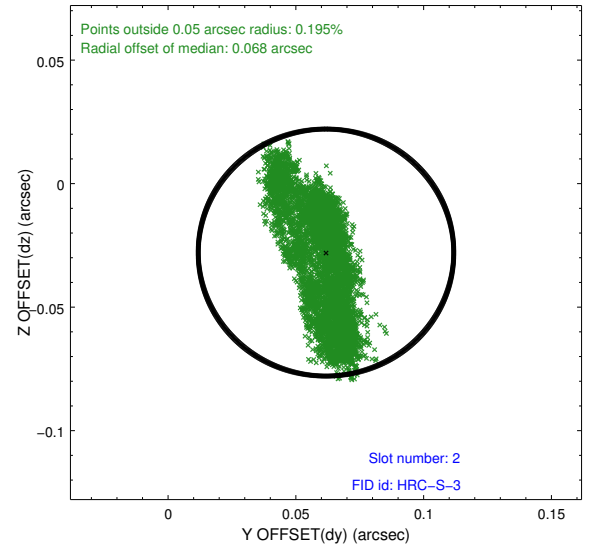
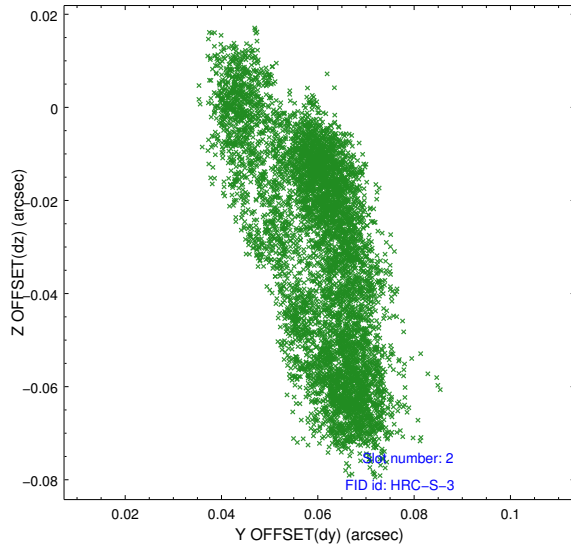
2.5.1 Slot 0



2.5.2 Slot 1



2.5.3 Slot 2



A Summary

A.1 Status

V&V Scientist	Beth Sundheim
V&V Date (YYYY-MM-DD)	2013.07.01
V&V Edition	1
V&V Disposition and Status	OK
V&V Charge Time	25.187582578242

A.2 Comments