

# V&V Reference Report

## L2 ASCDS Version : 8.4.3

Observation 13072 - L2 Version 4  
Chandra X-Ray Center

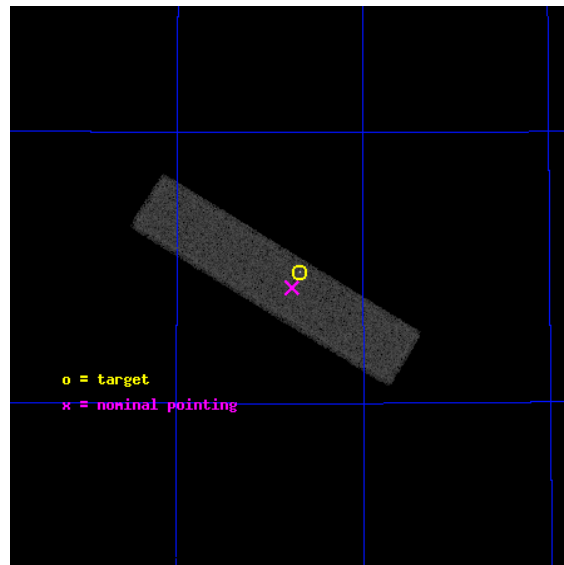
L2 Processing Date : Aug 9 2012

## Contents

<b>1</b>	<b>Front</b>	<b>2</b>
<b>2</b>	<b>OBI</b>	<b>3</b>
2.1	OBI . . . . .	3
2.1.1	Images . . . . .	3
2.1.2	Parameters . . . . .	4
2.1.3	Events . . . . .	4
2.2	Compared Parameters . . . . .	5
2.3	Aspect . . . . .	6
2.4	Star Slots . . . . .	9
2.4.1	Slot 3 . . . . .	9
2.4.2	Slot 4 . . . . .	10
2.4.3	Slot 5 . . . . .	11
2.4.4	Slot 6 . . . . .	12
2.4.5	Slot 7 . . . . .	13
2.5	FID Slots . . . . .	14
2.5.1	Slot 0 . . . . .	14
2.5.2	Slot 1 . . . . .	15
2.5.3	Slot 2 . . . . .	16
<b>A</b>	<b>Summary</b>	<b>17</b>
A.1	Status . . . . .	17
A.2	Comments . . . . .	17

# 1 Front

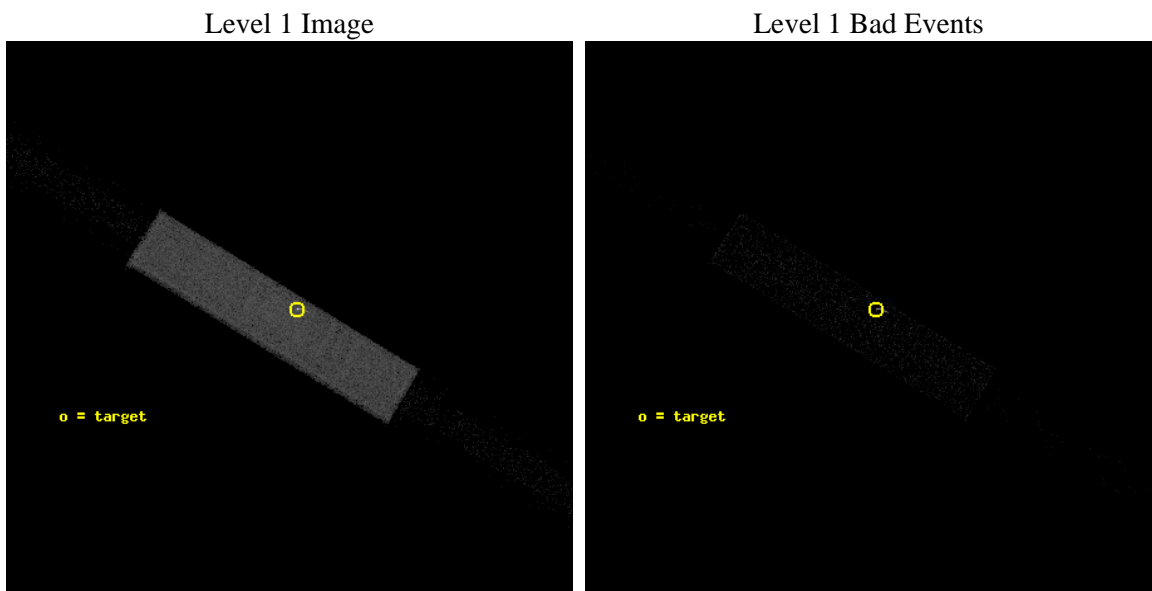
seq_num	290991	Sequence number
obs_id	13072	Observation id
title	AO-12 Calibration Observations to Monitor the Spatial Variations in the HRC-S Gain	Proposal title
observer	Dr. CXC Calibration	Principal investigator
object	ArLac	Source name
ra_targ	332.17	Observer's specified target RA [deg]
dec_targ	45.742306	Observer's specified target Dec [deg]
ra_nom	332.19113257468	Nominal RA [deg]
dec_nom	45.713321806616	Nominal Dec [deg]
roll_nom	211.25460230282	Nominal Roll [deg]
revision	4	Processing version of data
ontime	1146.9750601649	[s]
livetime	1138.7299364137	Ontime multiplied by DTCOR
l2events	61614	Number of level 2 events



## 2 OBI

### 2.1 OBI

#### 2.1.1 Images



### 2.1.2 Parameters

obi_num	0	Obi number	sched_exp_time	1000.000000	[s] Scheduled observation exposure time
ascdsver	8.4.5	Processing system revision	ontime	1146.9750601649	[s]
caldsver	4.5.1.1	&#160	l1events	95720	Number of level 1 events
date	2012-08-10T01:49:58	Date and time of file creation			
revision	4	Processing version of data			

### 2.1.3 Events

Level 1 Events

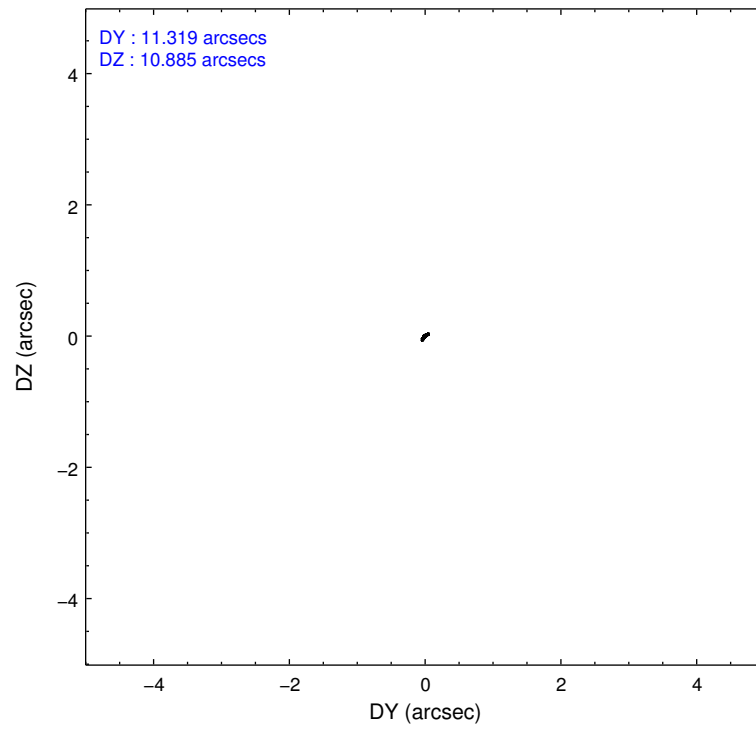
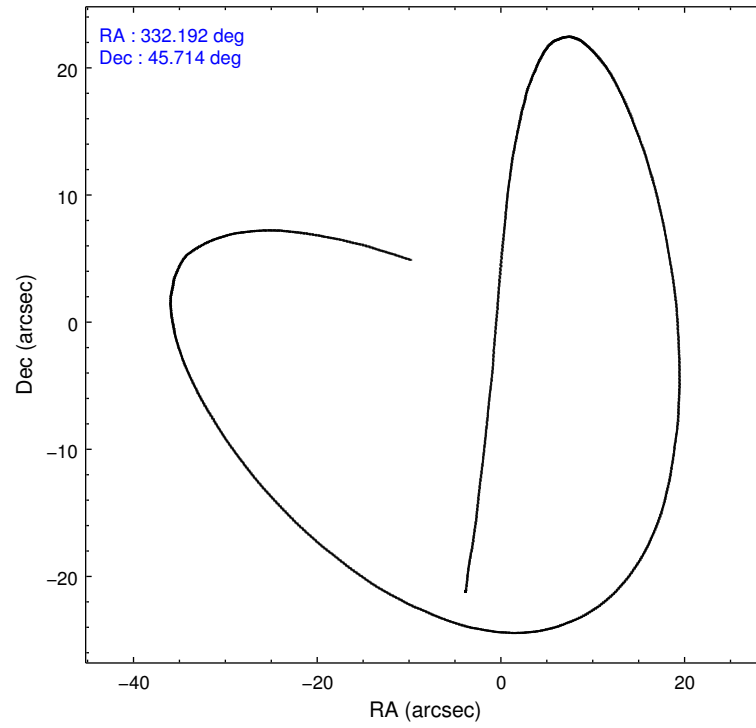
	<b>segment 1</b>	<b>segment 2</b>	<b>segment 3</b>
level 1 events	784	94135	801
rejected events	784	21896	801
rejected %	100%	23%	100%

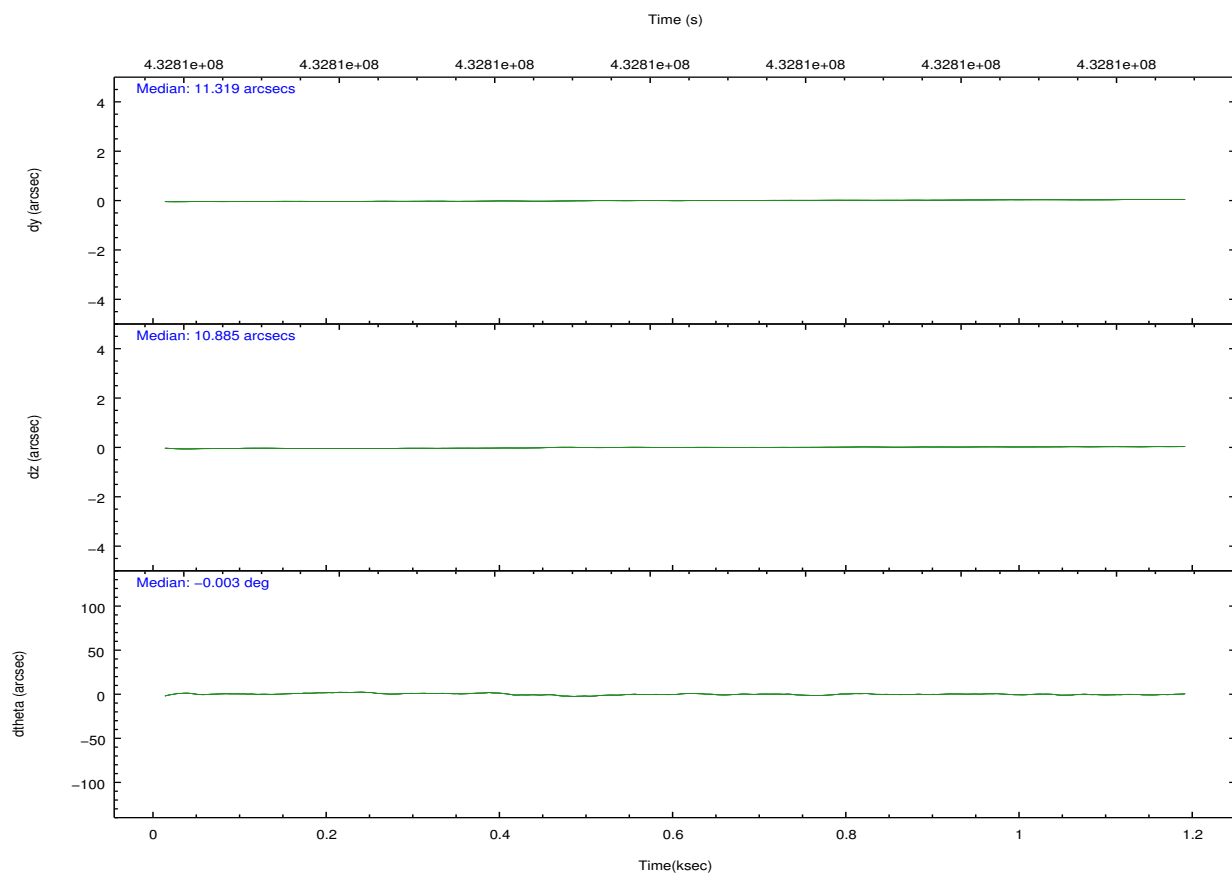
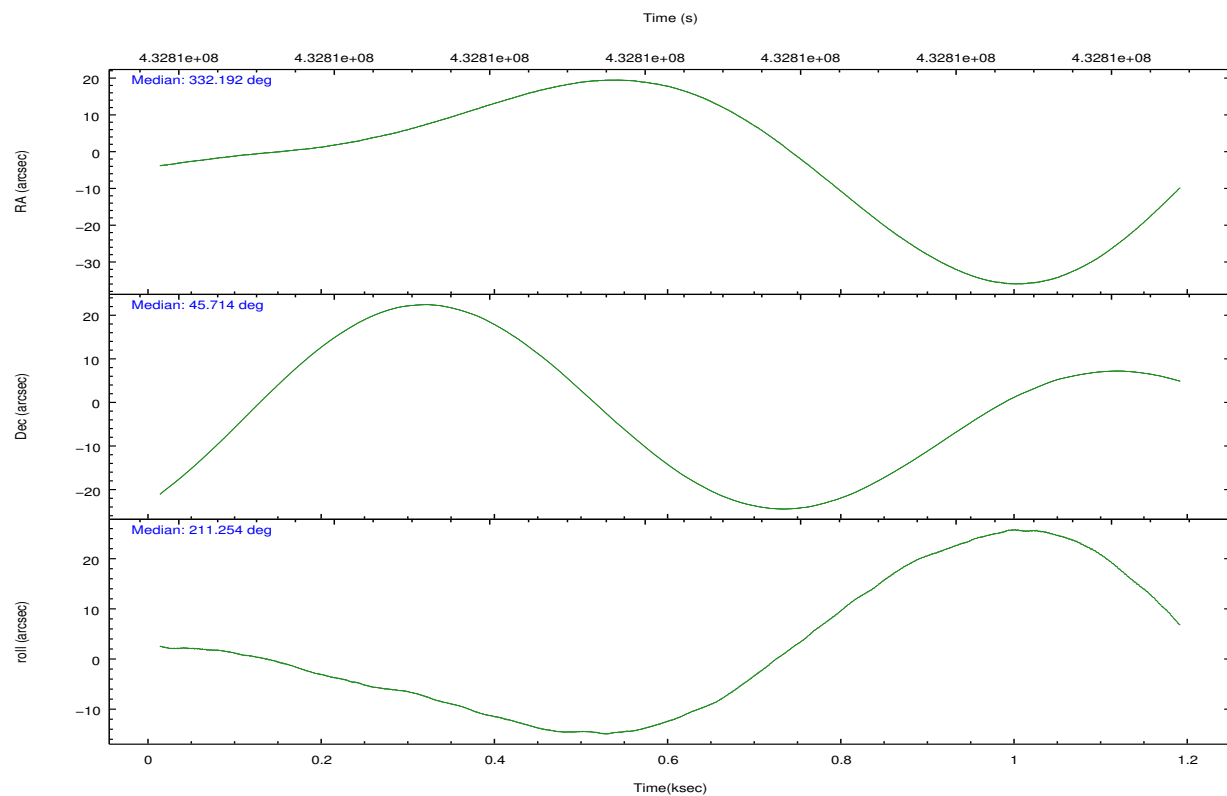
## 2.2 Compared Parameters

Parameter	Planned	Actual
Instrument	HRC	HRC
Detector	HRC-S	HRC-S
Grating	NONE	NONE
Data mode	OBSERVING	OBSERVING
Observation mode	POINTING	POINTING
[deg] Pointing RA	332.209867	332.1911325746819
[deg] Pointing Dec	45.738498	45.71332180661616
[deg] Pointing Roll	211.173857	211.2546023028239
[mm] SIM focus pos	-1.533336	-1.526339935833849
[mm] SIM defocus	7.710433287538843e-07	0.006996703570447904
[mm] SIM translation stage pos	250.455976	250.4635187648994
[mm] SIM translation stage offset	0	-0.007540371344731511
[s] Observation start time (MET)	432808032.184000	432807655.62466
Observation start date	2011-09-19T08:26:06	2011-09-19T08:20:55
[s] Observation end time (MET)	432809032.184000	432809165.96224
Observation end date	2011-09-19T08:42:46	2011-09-19T08:46:05

Parameter	Planned	Actual
Obspar format version number	7	7
Obspar file type	PREDICTED	ACTUAL
Obspar update status	NONE	UPDATED

## 2.3 Aspect



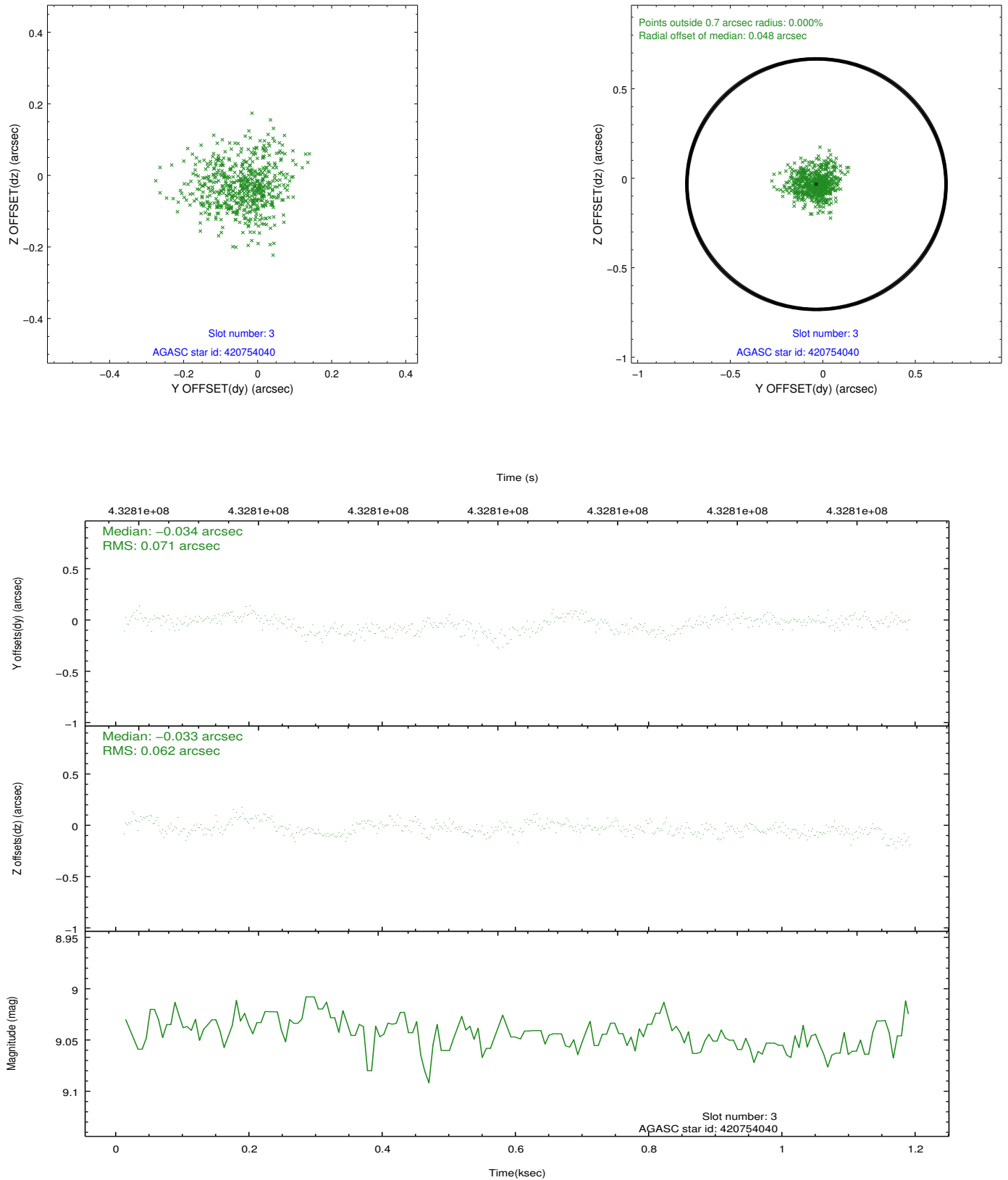


### Slot Statistics

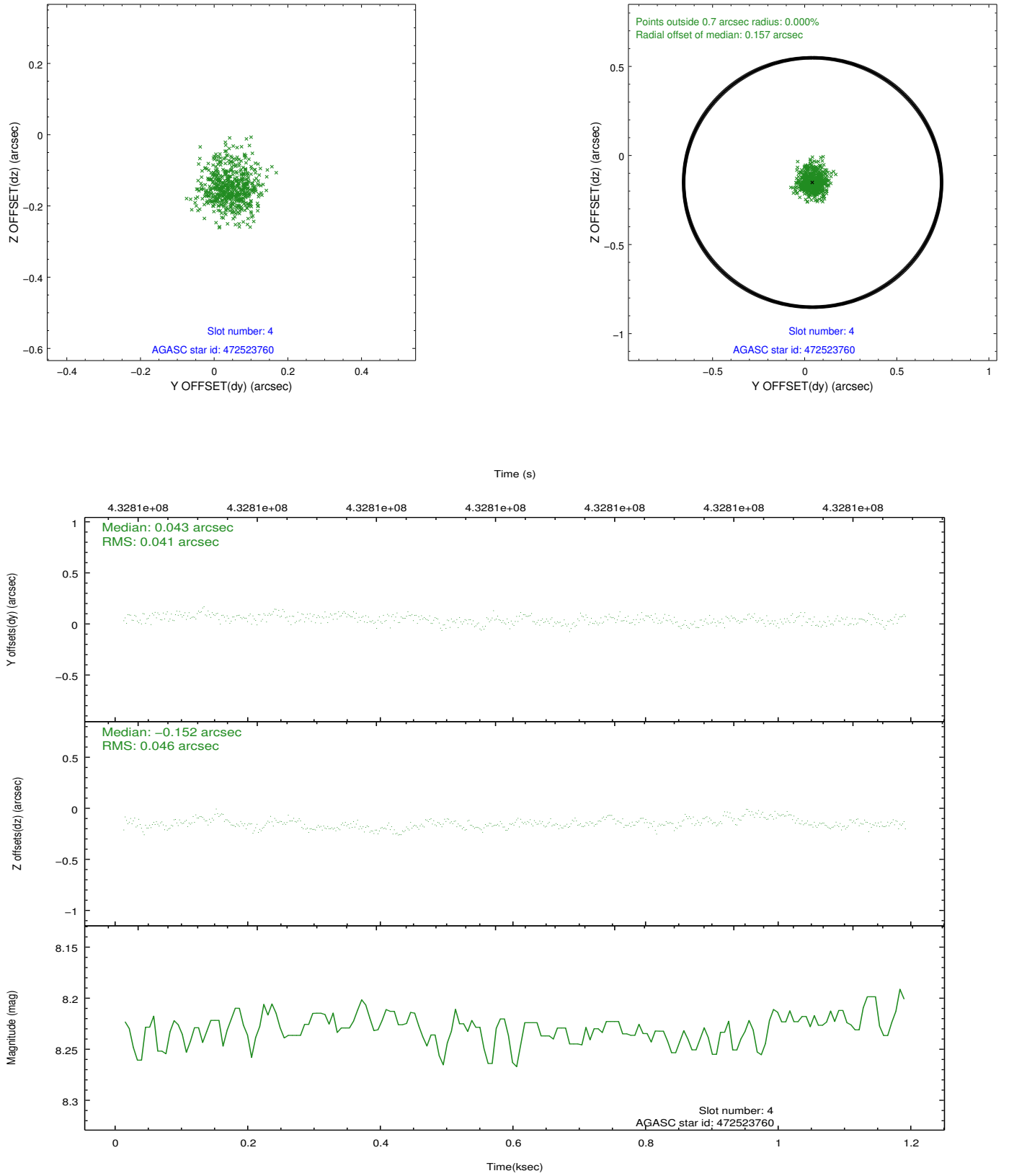
slot	status	id	mag	n_pts	med_dy	med_dz	dr1	dr2	ra	dec	mean_y	mean_z
0	FID	HRC-S-1	6.98	288	0.043	-0.156	0.013	0.024	0.000000	0.000000	-1165.66	-459.54
1	FID	HRC-S-2	6.97	288	0.292	-0.132	0.006	0.012	0.000000	0.000000	1230.20	-453.76
2	FID	HRC-S-3	6.99	288	0.054	-0.014	0.010	0.023	0.000000	0.000000	-1164.09	568.55
3	GUIDE	420754040	9.04	575	-0.034	-0.033	0.101	0.166	331.917939	44.882543	2229.99	2253.45
4	GUIDE	472523760	8.23	576	0.043	-0.152	0.065	0.106	331.645363	45.403260	1846.79	296.67
5	GUIDE	472665256	9.01	573	0.199	0.070	0.096	0.155	332.808125	46.195041	-2125.86	-635.61
6	GUIDE	472525528	6.63	576	-0.358	0.010	0.082	0.137	331.551102	45.248694	2333.53	640.67
7	GUIDE	472663080	9.40	575	0.161	0.101	0.122	0.194	332.652741	46.473840	-2307.35	-1694.90

## 2.4 Star Slots

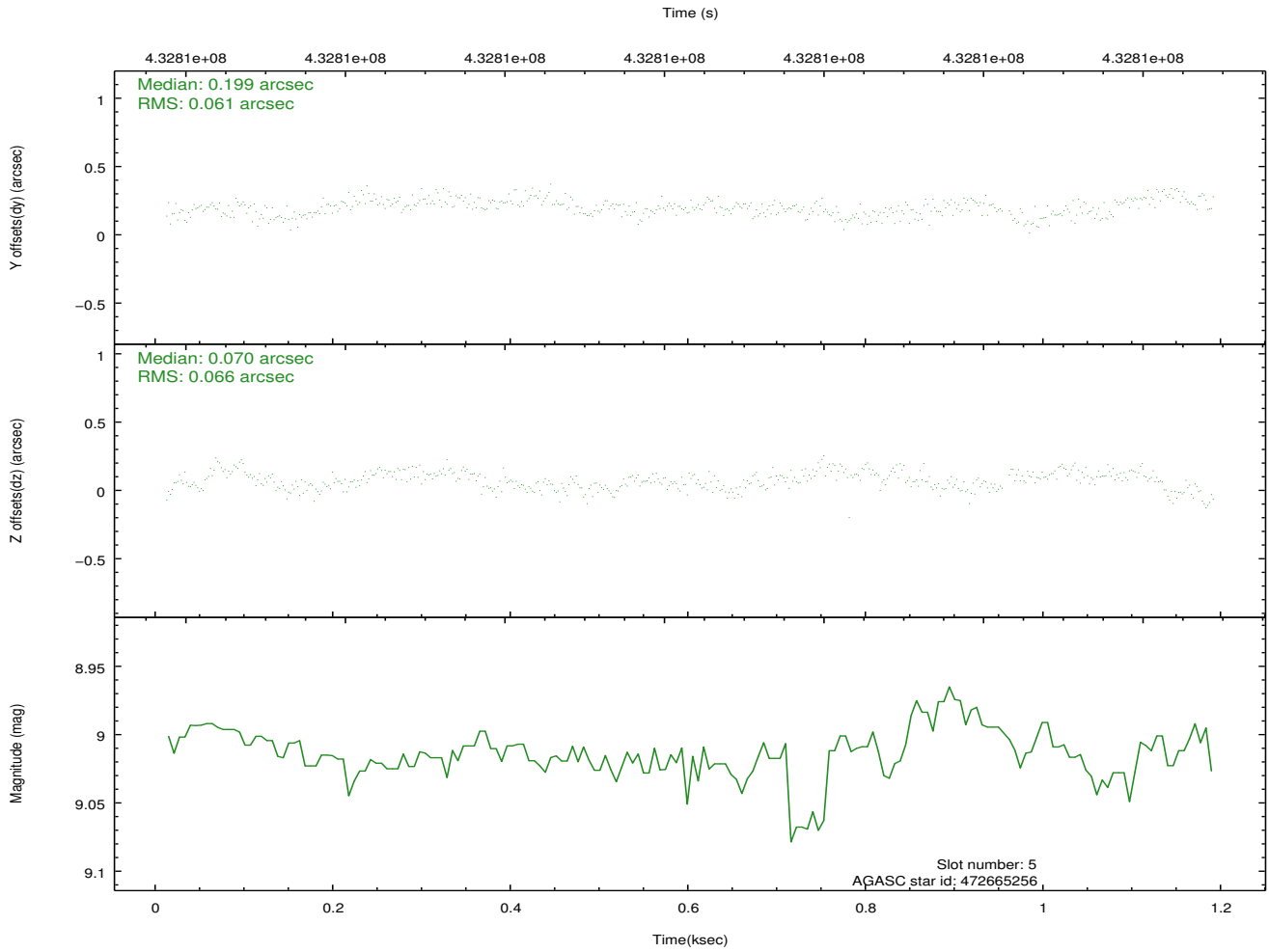
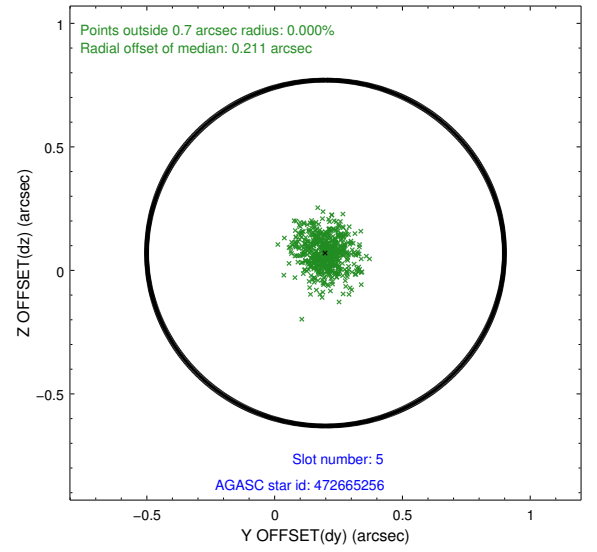
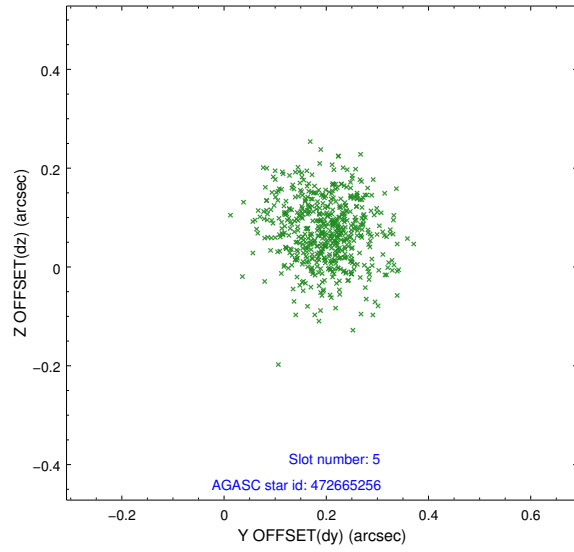
### 2.4.1 Slot 3



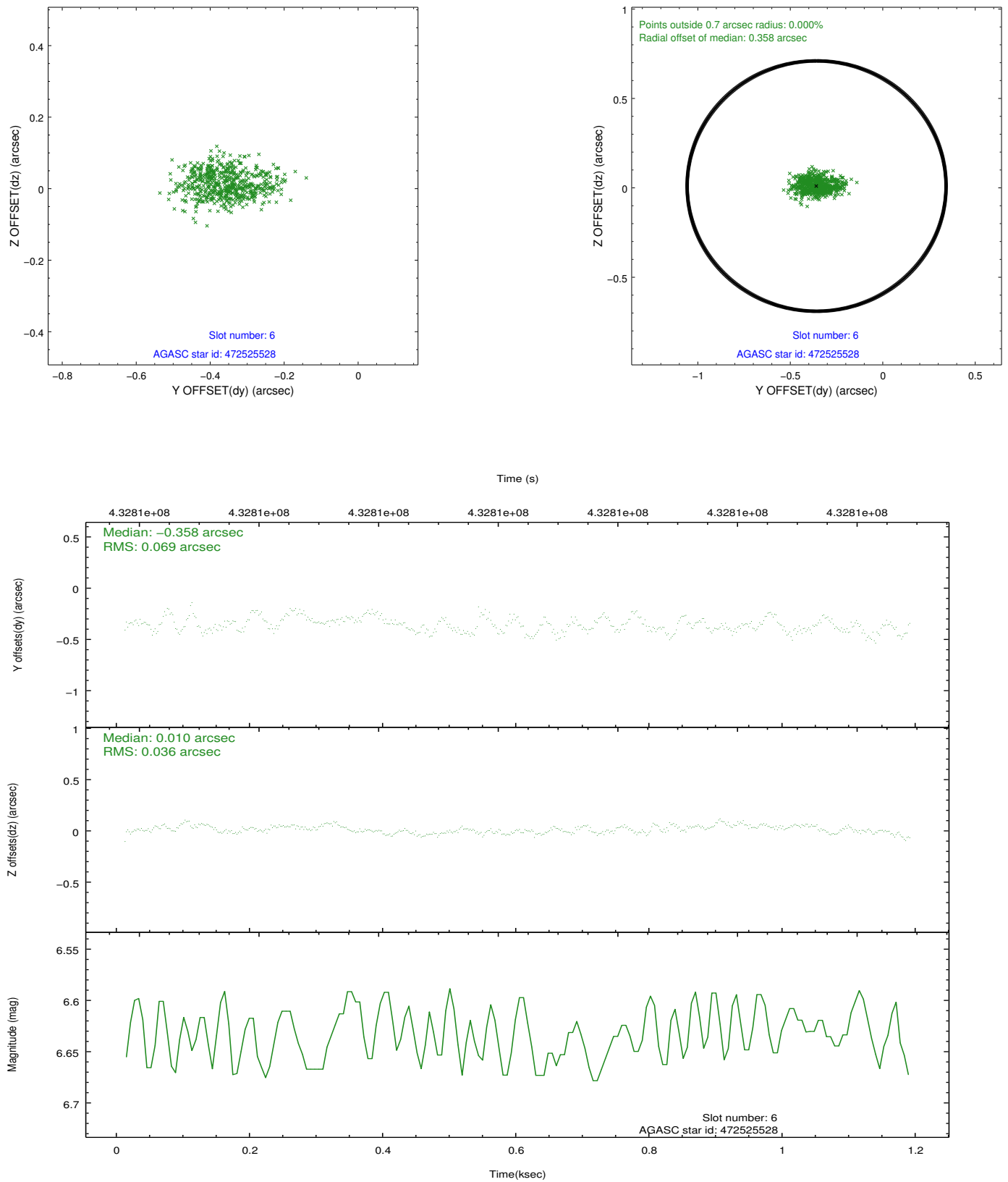
## 2.4.2 Slot 4



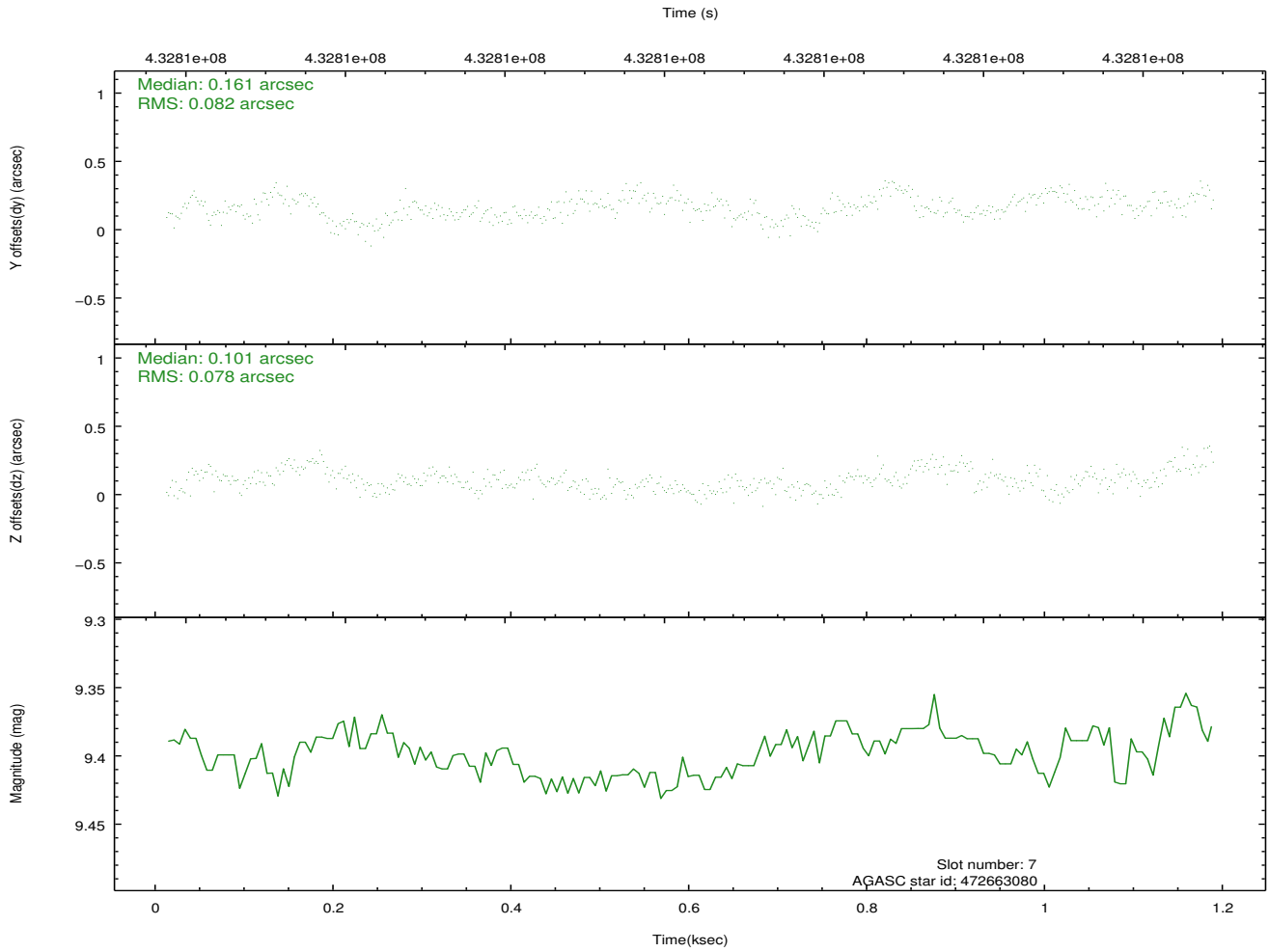
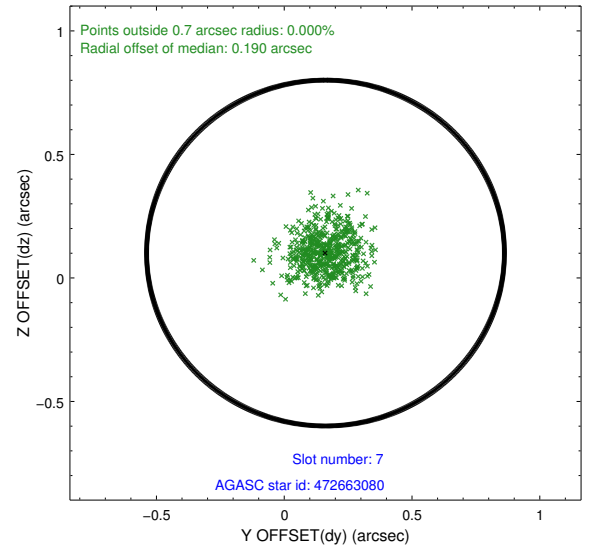
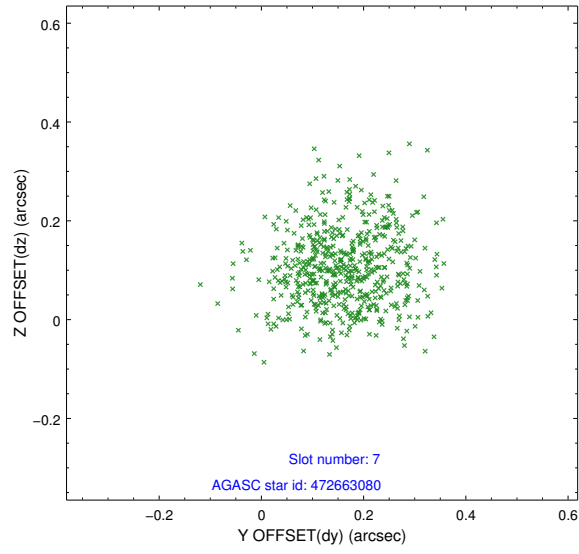
### 2.4.3 Slot 5



## 2.4.4 Slot 6

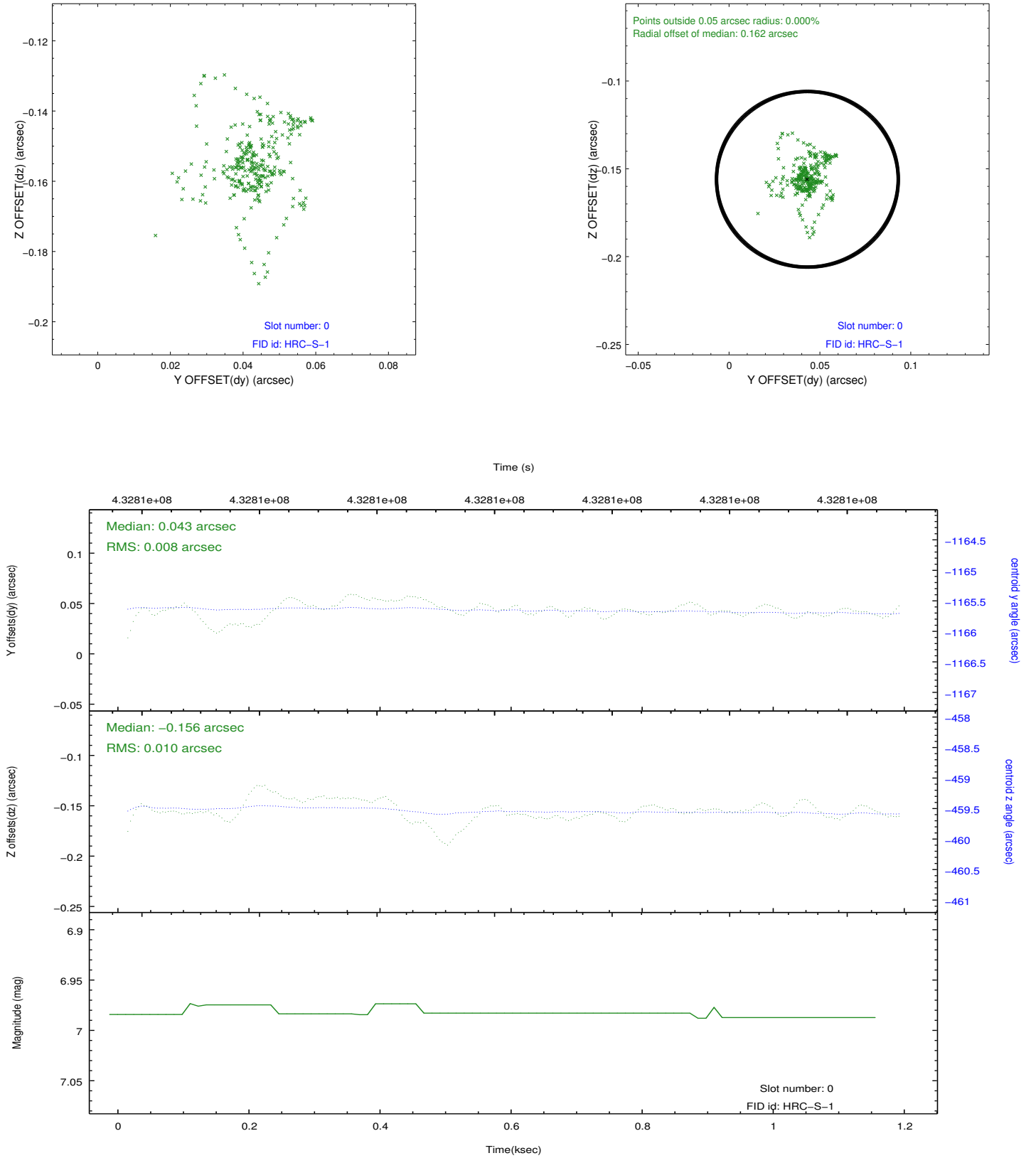


## 2.4.5 Slot 7

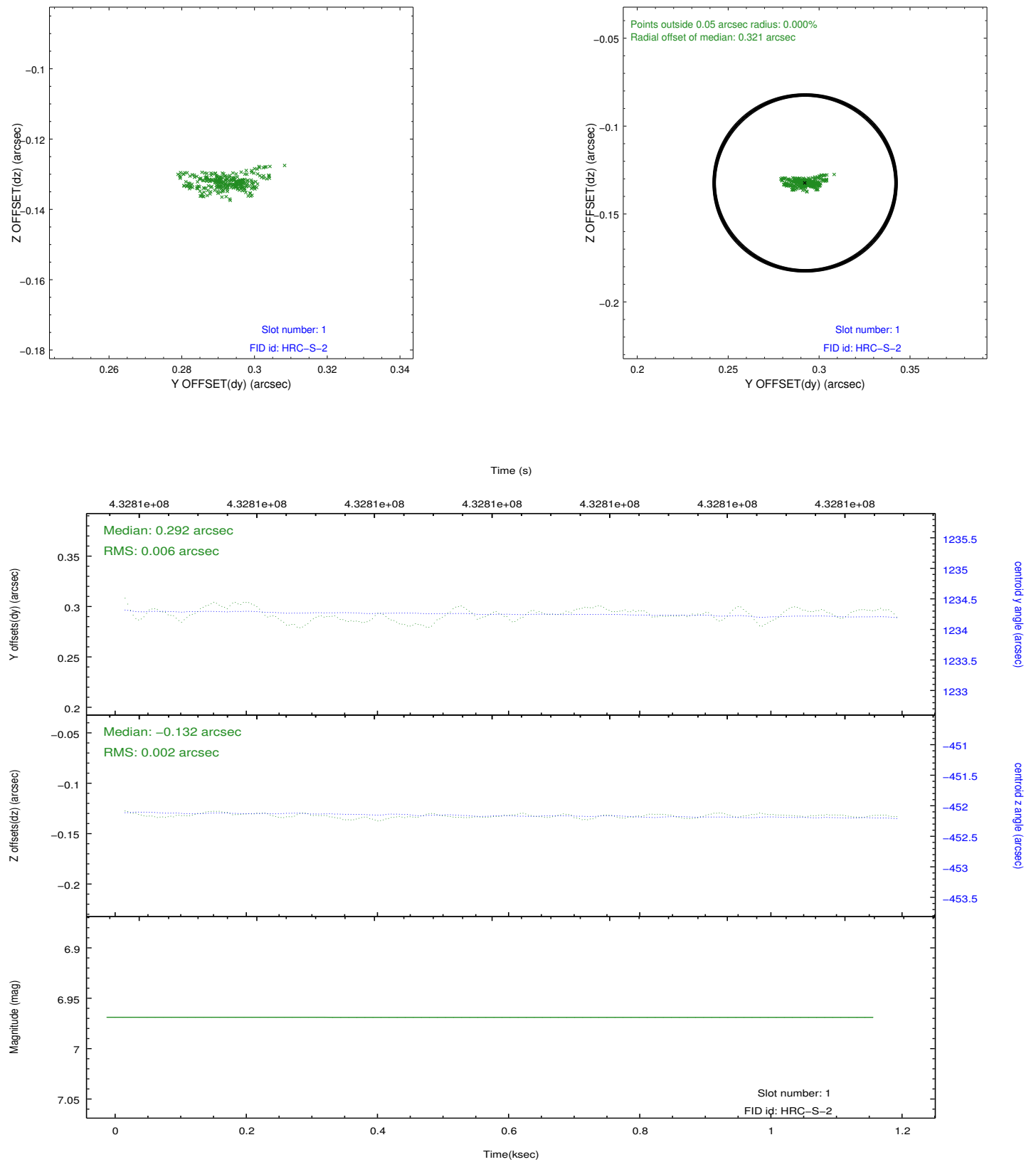


## 2.5 FID Slots

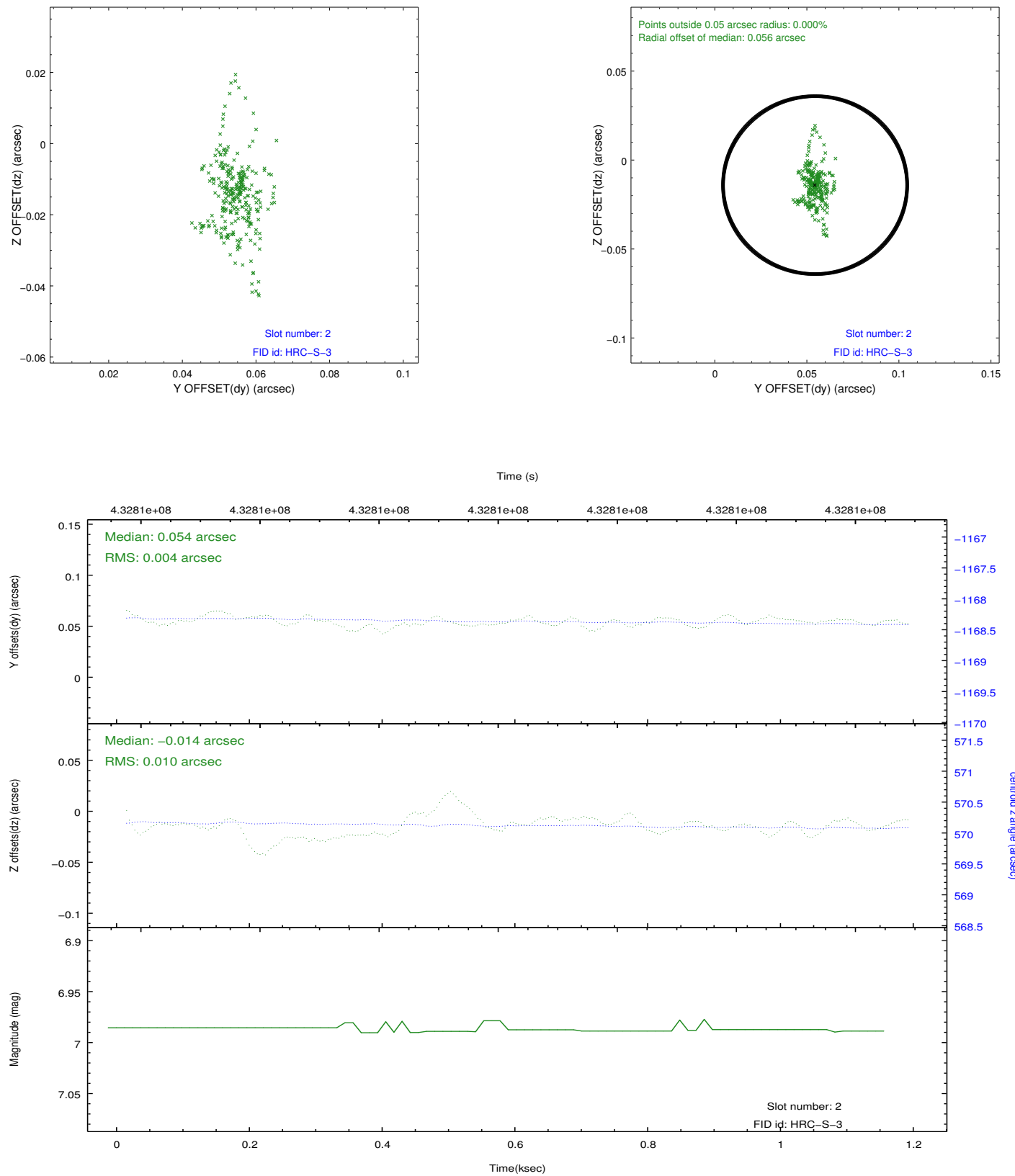
### 2.5.1 Slot 0



## 2.5.2 Slot 1



### 2.5.3 Slot 2



## **A Summary**

### **A.1 Status**

V&V Scientist	Jen Lauer
V&V Date (YYYY-MM-DD)	2012.08.10
V&V Edition	1
V&V Disposition and Status	OK
V&V Charge Time	1.1469750601053

### **A.2 Comments**