

V&V Reference Report

L2 ASCDS Version : 8.4.3

Observation 12352 - L2 Version 2
Chandra X-Ray Center

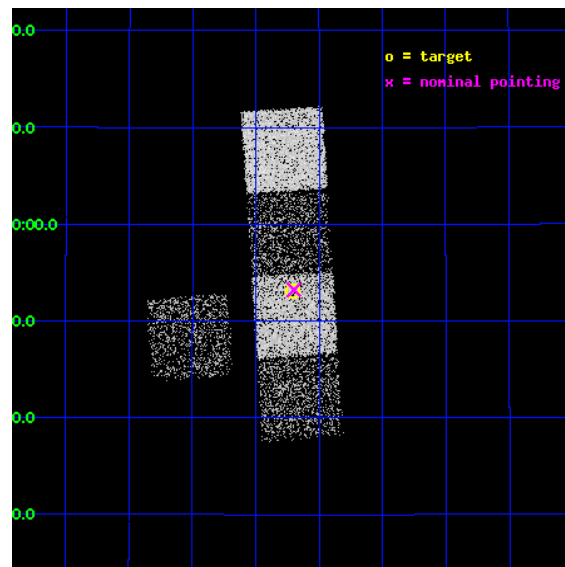
L2 Processing Date : Feb 28 2012

Contents

1	Front	2
2	OBI	3
2.1	OBI	3
2.1.1	Images	3
2.1.2	Bias	3
2.1.3	Parameters	4
2.1.4	Events	4
2.2	Compared Parameters	5
2.3	Aspect	6
2.4	Star Slots	9
2.4.1	Slot 3	9
2.4.2	Slot 4	10
2.4.3	Slot 5	11
2.4.4	Slot 6	12
2.4.5	Slot 7	13
2.5	FID Slots	14
2.5.1	Slot 0	14
2.5.2	Slot 1	15
2.5.3	Slot 2	16
A	Summary	17
A.1	Status	17
A.2	Comments	17

1 Front

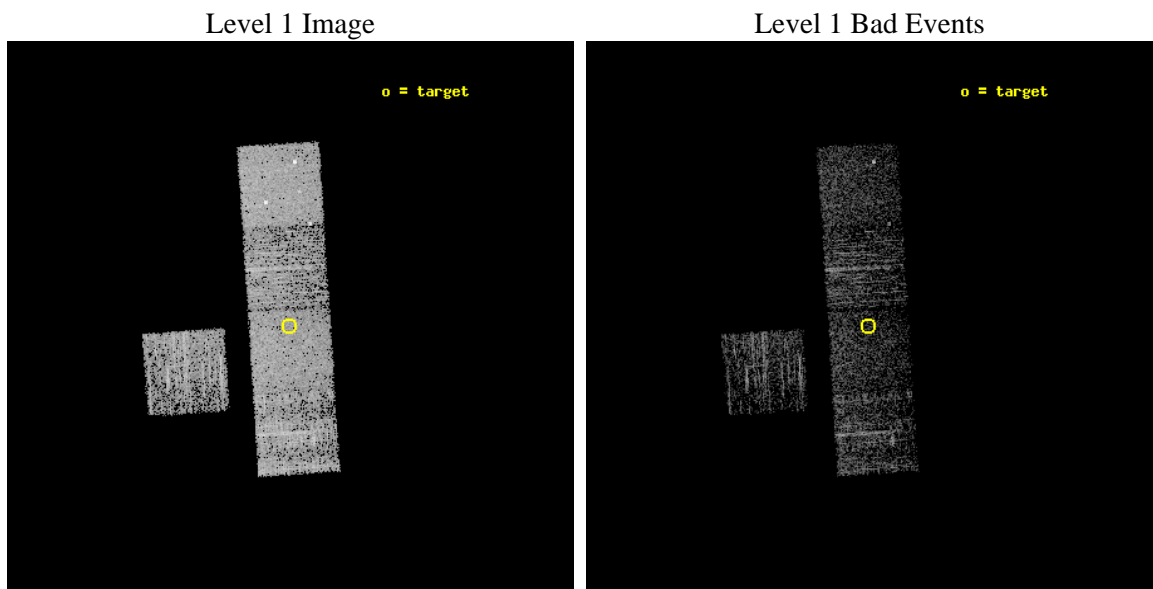
seq_num	200687	Sequence number
obs_id	12352	Observation id
title	Searching for Millisecond Pulsars in Extremely Low-Mass White Dwarf Binaries	Proposal title
observer	Dr Marcel Agueros	Principal investigator
object	SDSS J082212.57+275307.4	Source name
dtcycle	0	
cycle	P	events from which exps? Prim/Second/Both
ra_targ	125.5525	Observer's specified target RA [deg]
dec_targ	27.885389	Observer's specified target Dec [deg]
ra_nom	125.5497391772	Nominal RA [deg]
dec_nom	27.887096032039	Nominal Dec [deg]
roll_nom	86.253601553091	Nominal Roll [deg]
revision	2	Processing version of data
ontime	2038.7569280863	Sum of GTIs [s]
livetime	2012.1190679098	Livetime [s]
ontime3	2038.6338080764	Sum of GTIs [s]
ontime5	2038.715888083	Sum of GTIs [s]
ontime6	2038.6748480797	Sum of GTIs [s]
ontime7	2038.7569280863	Sum of GTIs [s]
ontime8	2038.5927680731	Sum of GTIs [s]
l2events	20743	Number of level 2 events



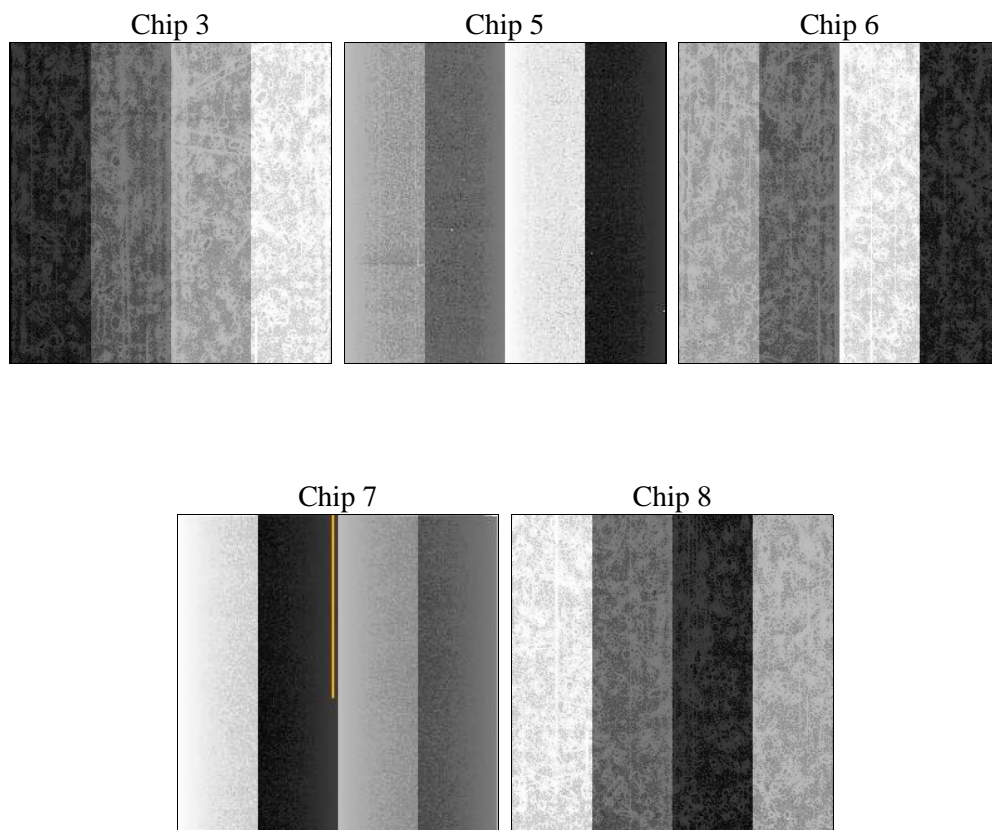
2 OBI

2.1 OBI

2.1.1 Images



2.1.2 Bias



2.1.3 Parameters

obi_num	0	Obi number	sched_exp_time	2000.000000	[s] Scheduled observation exposure time
ascdsver	8.4.3	Processing system revision	ontime	2038.7569280863	Sum of GTIs [s]
caldsver	4.4.8	 	ontime3	2038.6338080764	Sum of GTIs [s]
date	2012-02-28T16:02:50	Date and time of file creation	ontime5	2038.715888083	Sum of GTIs [s]
revision	2	Processing version of data	ontime6	2038.6748480797	Sum of GTIs [s]
			ontime7	2038.7569280863	Sum of GTIs [s]
			ontime8	2038.5927680731	Sum of GTIs [s]
			l1events	83404	Number of level 1 events

2.1.4 Events

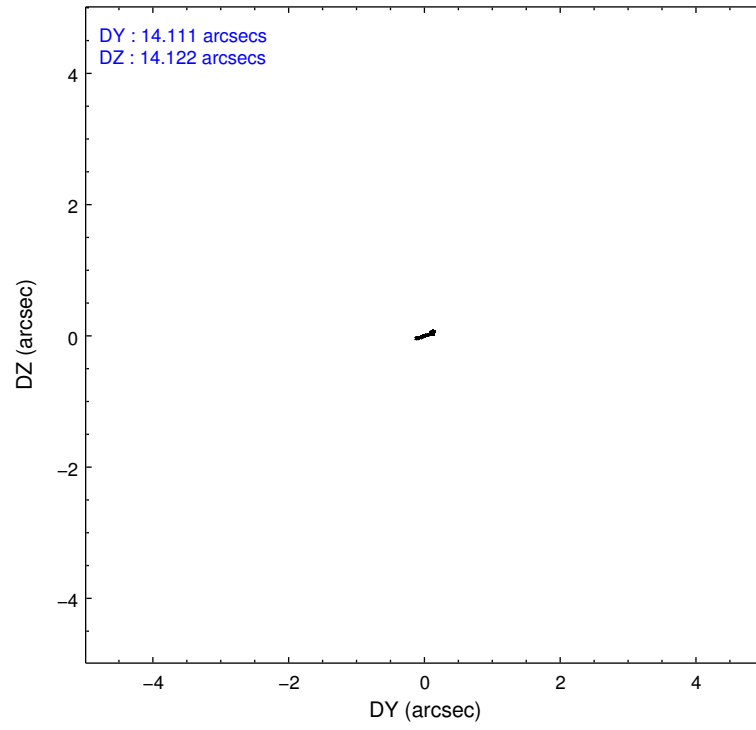
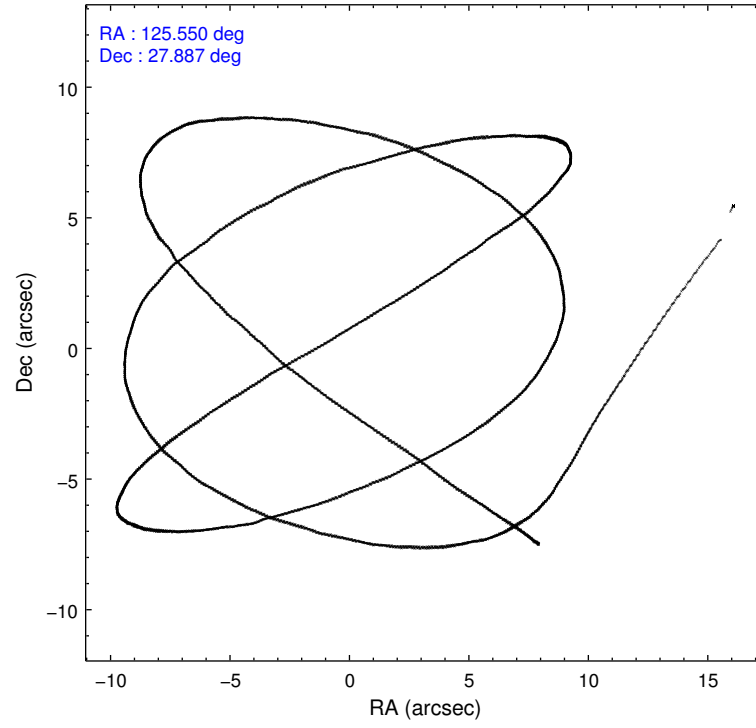
	ccd 3	ccd 5	ccd 6	ccd 7	ccd 8
level 1 events	13409	21720	13600	17104	17571
rejected events	12044	10827	12139	9627	12946
rejected %	89%	49%	89%	56%	73%

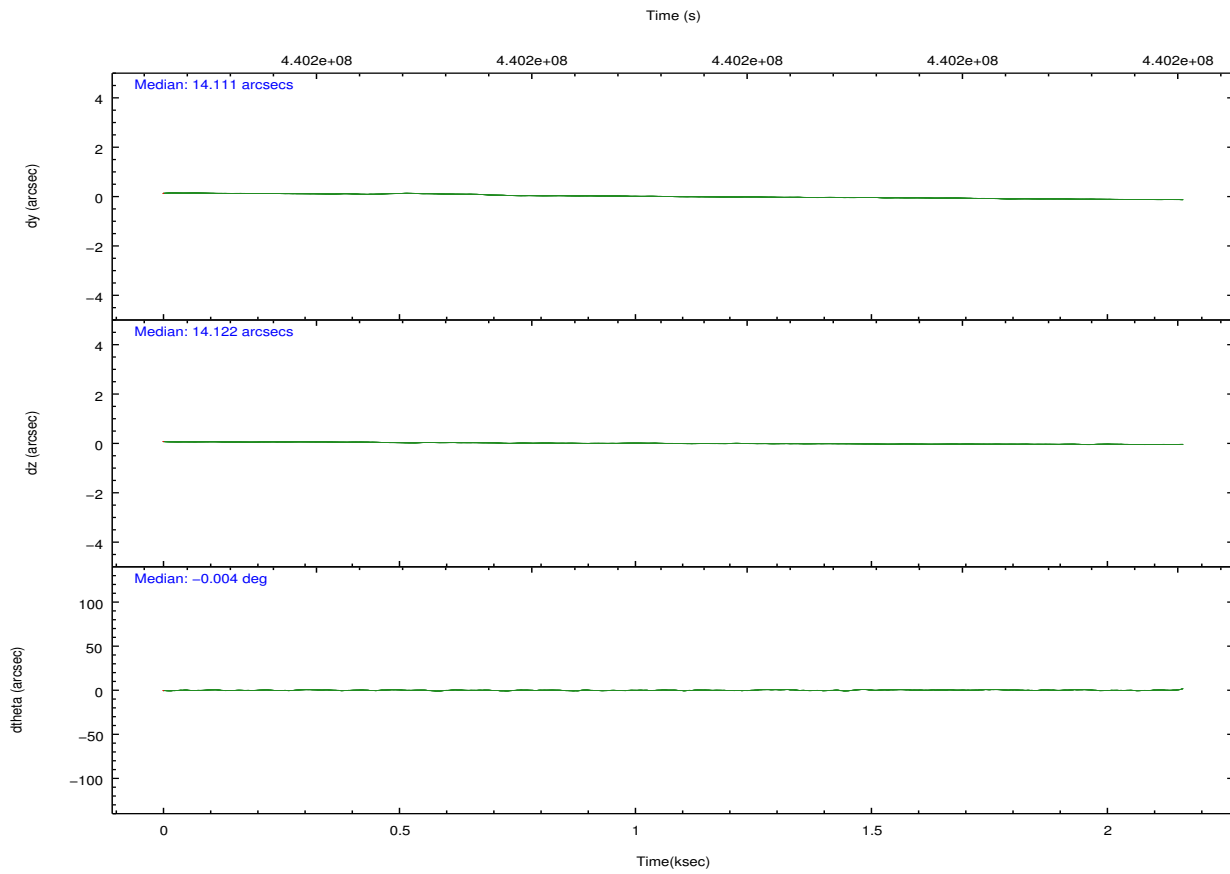
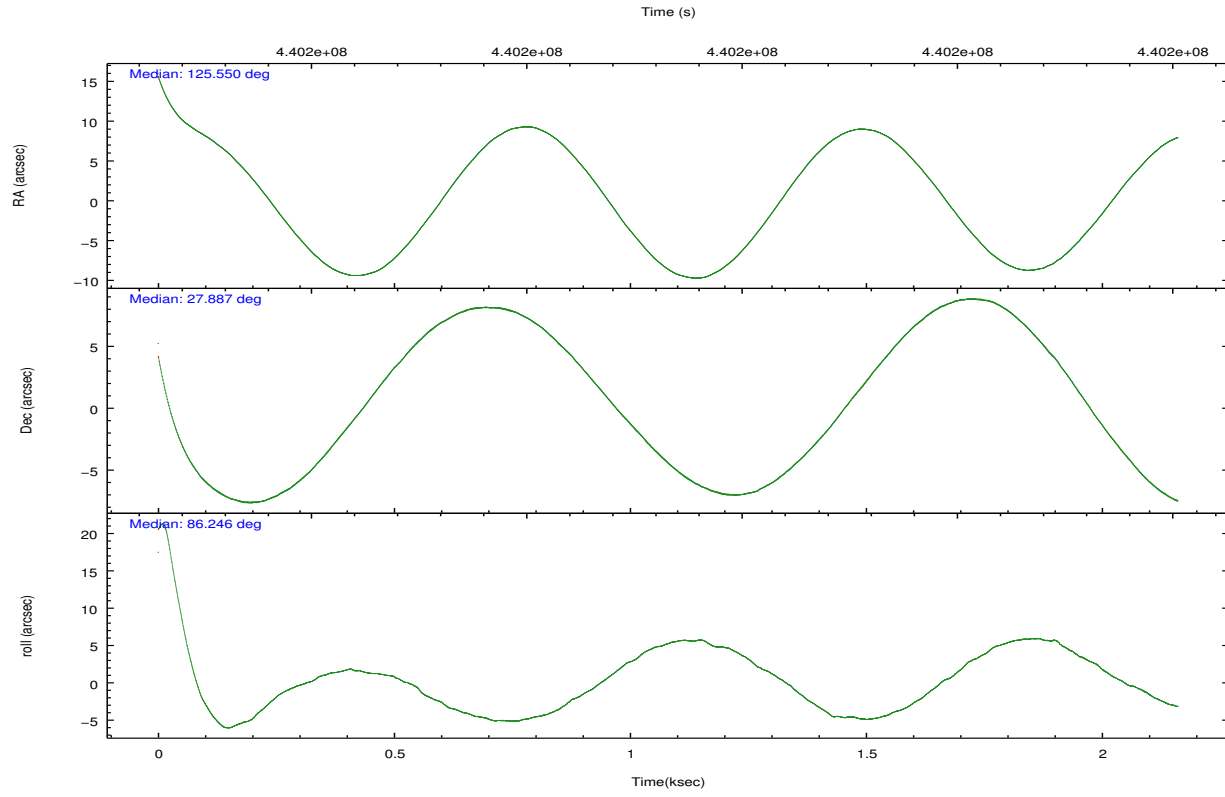
	ccd 3	ccd 5	ccd 6	ccd 7	ccd 8
grade 0 events	458	1609	510	645	1226
	3%	7%	3%	3%	6%
grade 1 events	5	281	9	14	7
	0%	1%	0%	0%	0%
grade 2 events	324	3236	341	1524	1178
	2%	14%	2%	8%	6%
grade 3 events	155	412	136	685	495
	1%	1%	1%	4%	2%
grade 4 events	169	385	148	628	426
	1%	1%	1%	3%	2%
grade 5 events	603	1633	640	1754	968
	4%	7%	4%	10%	5%
grade 6 events	261	5292	334	4017	1306
	1%	24%	2%	23%	7%
grade 7 events	11434	8872	11482	7837	11965
	85%	40%	84%	45%	68%

2.2 Compared Parameters

Parameter	Planned	Actual	Parameter	Planned	Actual
Instrument	ACIS	ACIS	Obspar format version number	7	7
Detector	ACIS-35678	ACIS-35678	Obspar file type	PREDICTED	ACTUAL
Grating	NONE	NONE	Obspar update status	NONE	UPDATED
Data mode	VFAINT	VFAINT	CCD I0 on	N	N
Observation mode	POINTING	POINTING	CCD I1 on	N	N
[deg] Pointing RA	125.563801	125.5497391772033	CCD I2 on	O1	N
[deg] Pointing Dec	27.862818	27.88709603203868	CCD I3 on	O2	Y
[deg] Pointing Roll	86.090221	86.25360155309129	CCD S0 on	N	N
[mm] SIM focus pos	-0.684267	-0.6828225247311905	CCD S1 on	Y	Y
[mm] SIM defocus	0	0.001444936568705701	CCD S2 on	Y	Y
[mm] SIM translation stage pos	-190.132523	-190.1425803651734	CCD S3 on	Y	Y
[mm] SIM translation stage offset	0	0.01005778216563158	CCD S4 on	Y	Y
[s] Observation start time (MET)	440198399.184000	440197214.43812	CCD S5 on	N	N
Observation start date	2011-12-13T21:18:53	2011-12-13T21:00:14	Number of optional ACIS chips dropped	1	1
[s] Observation end time (MET)	440200399.184000	440201177.08833	On-chip summing requested	N	N
Observation end date	2011-12-13T21:52:13	2011-12-13T22:06:17	Subarray requested	NONE	NONE
Read mode	TIMED	TIMED	Alternating exposures requested	N	N
			[s] Primary exposure time	0.000000	3.1

2.3 Aspect



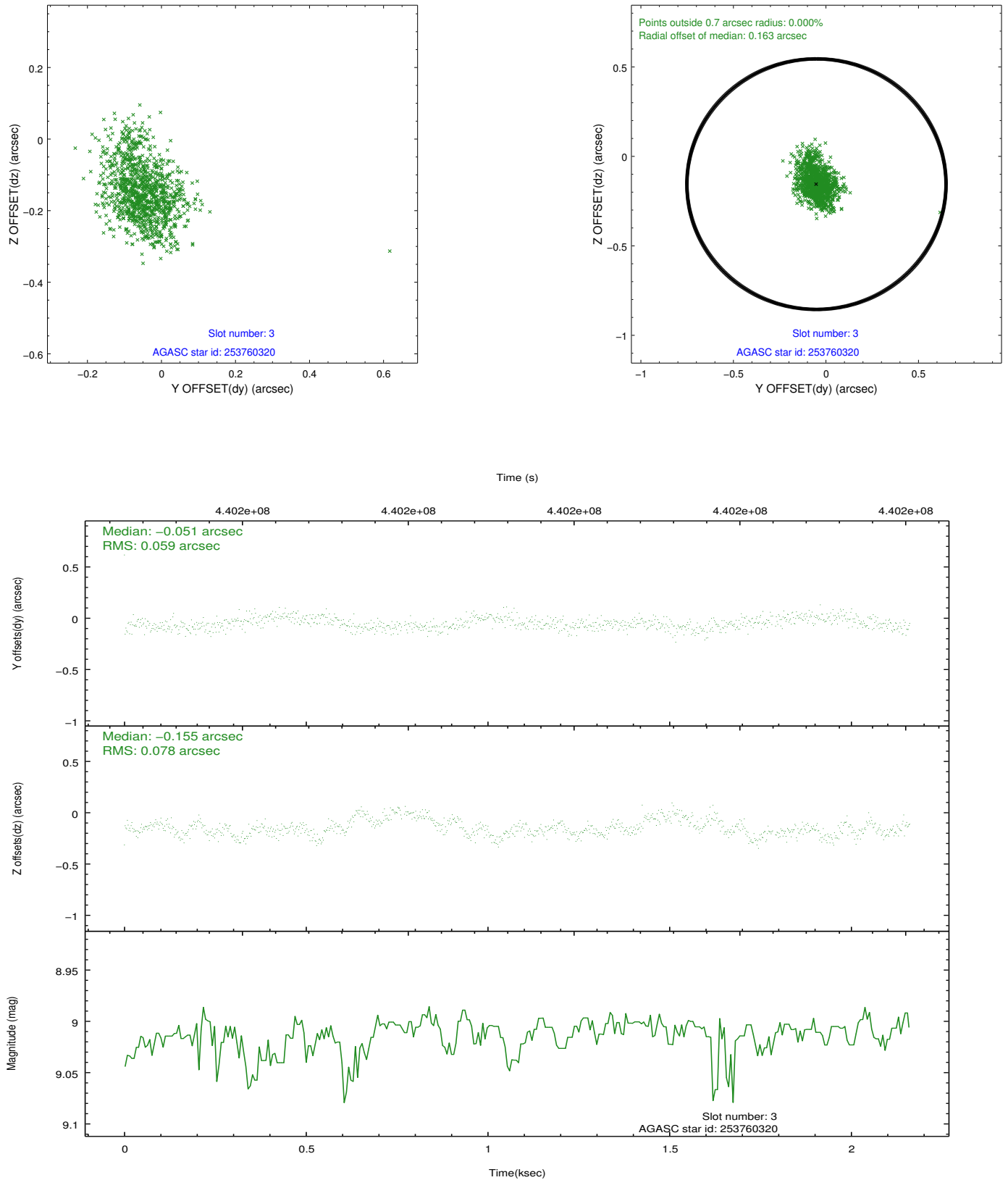


Slot Statistics

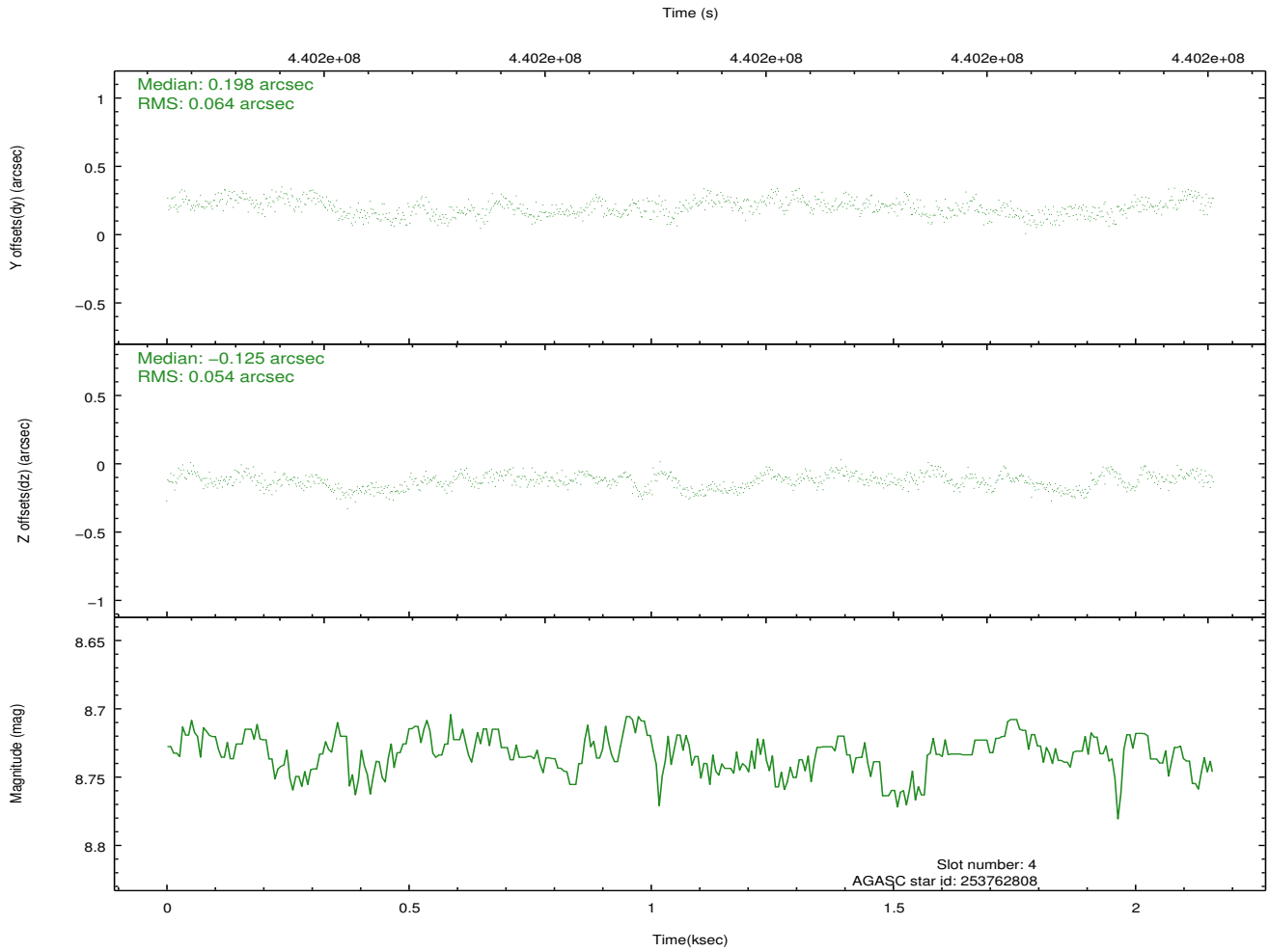
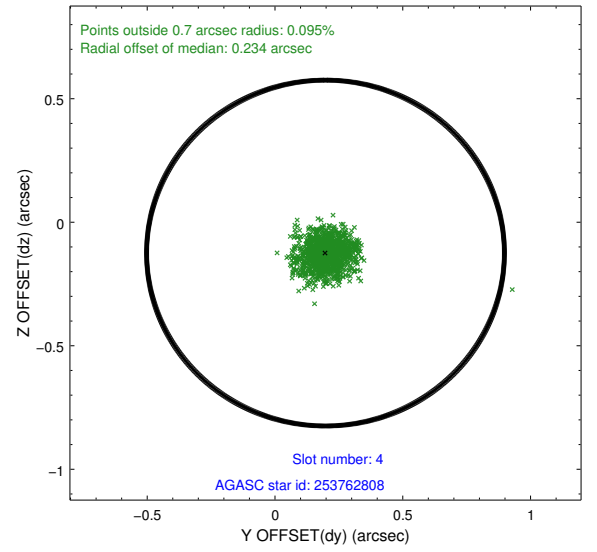
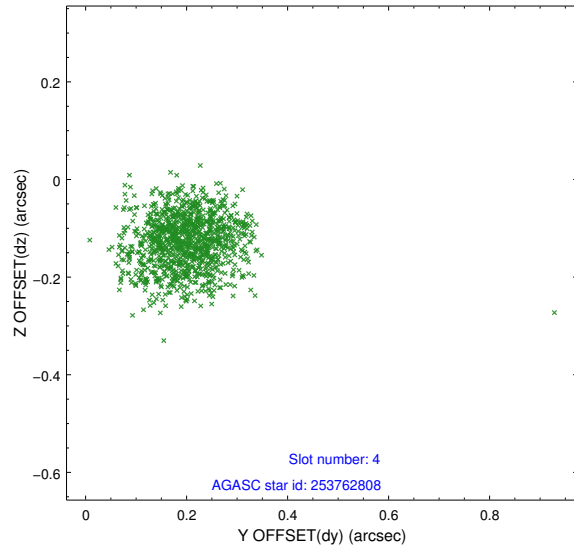
slot	status	id	mag	n_pts	med_dy	med_dz	dr1	dr2	ra	dec	mean_y	mean_z
0	FID	ACIS-S-2	7.00	528	-0.086	-0.047	0.008	0.012	0.000000	0.000000	-767.16	-1735.47
1	FID	ACIS-S-4	7.08	528	0.242	0.054	0.007	0.012	0.000000	0.000000	2145.07	169.97
2	FID	ACIS-S-5	7.12	527	-0.187	0.001	0.006	0.010	0.000000	0.000000	-1816.22	167.04
3	GUIDE	253760320	9.01	1049	-0.051	-0.155	0.102	0.168	125.278284	28.087651	746.89	960.10
4	GUIDE	253762808	8.73	1055	0.198	-0.125	0.087	0.135	125.270454	27.352773	-1893.61	811.46
5	GUIDE	255202568	9.05	1055	-0.050	0.206	0.123	0.197	126.259210	28.356616	1928.82	-2074.98
6	GUIDE	255208912	7.35	1054	0.064	0.433	0.057	0.089	126.267746	27.548450	-966.95	-2319.74
7	GUIDE	254283456	8.60	1054	-0.166	-0.366	0.093	0.145	124.848675	28.227627	1161.56	2350.96

2.4 Star Slots

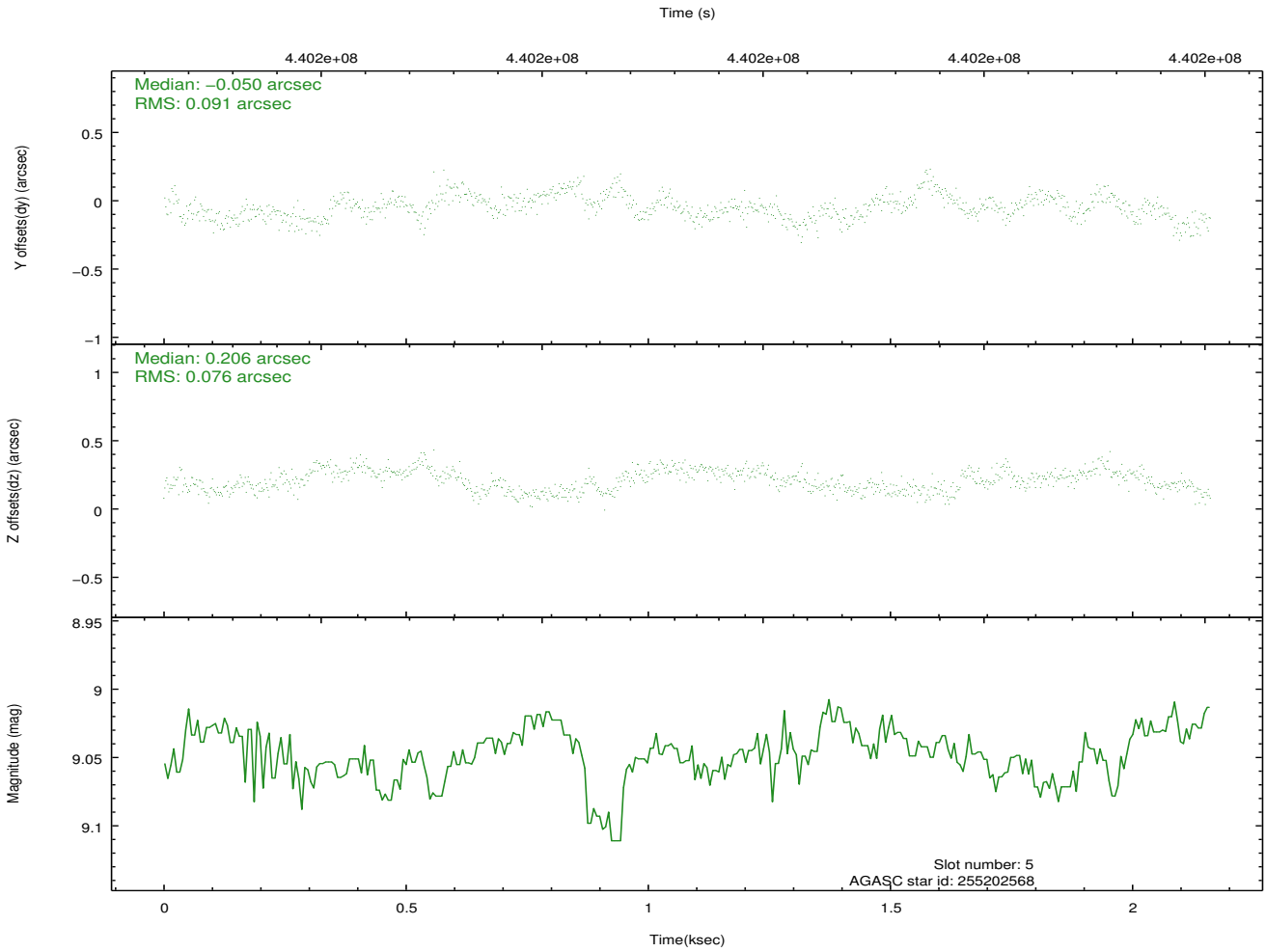
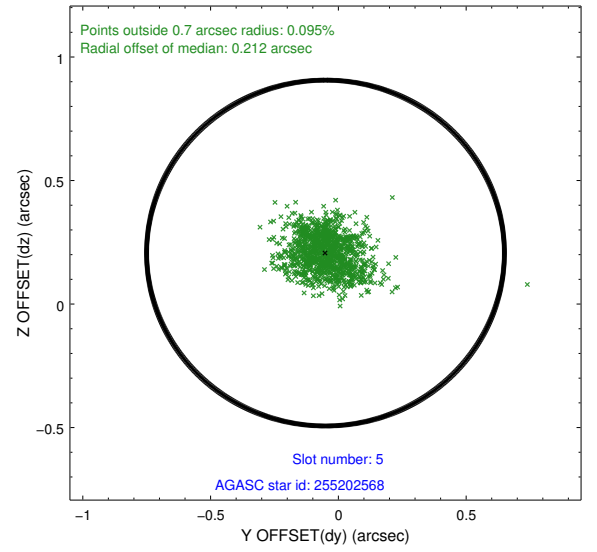
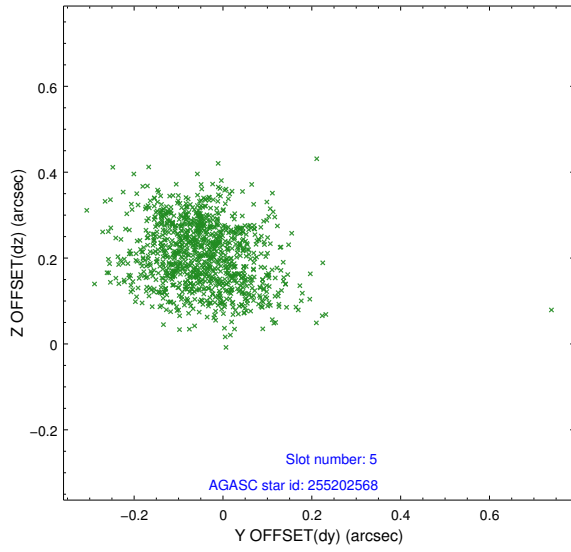
2.4.1 Slot 3



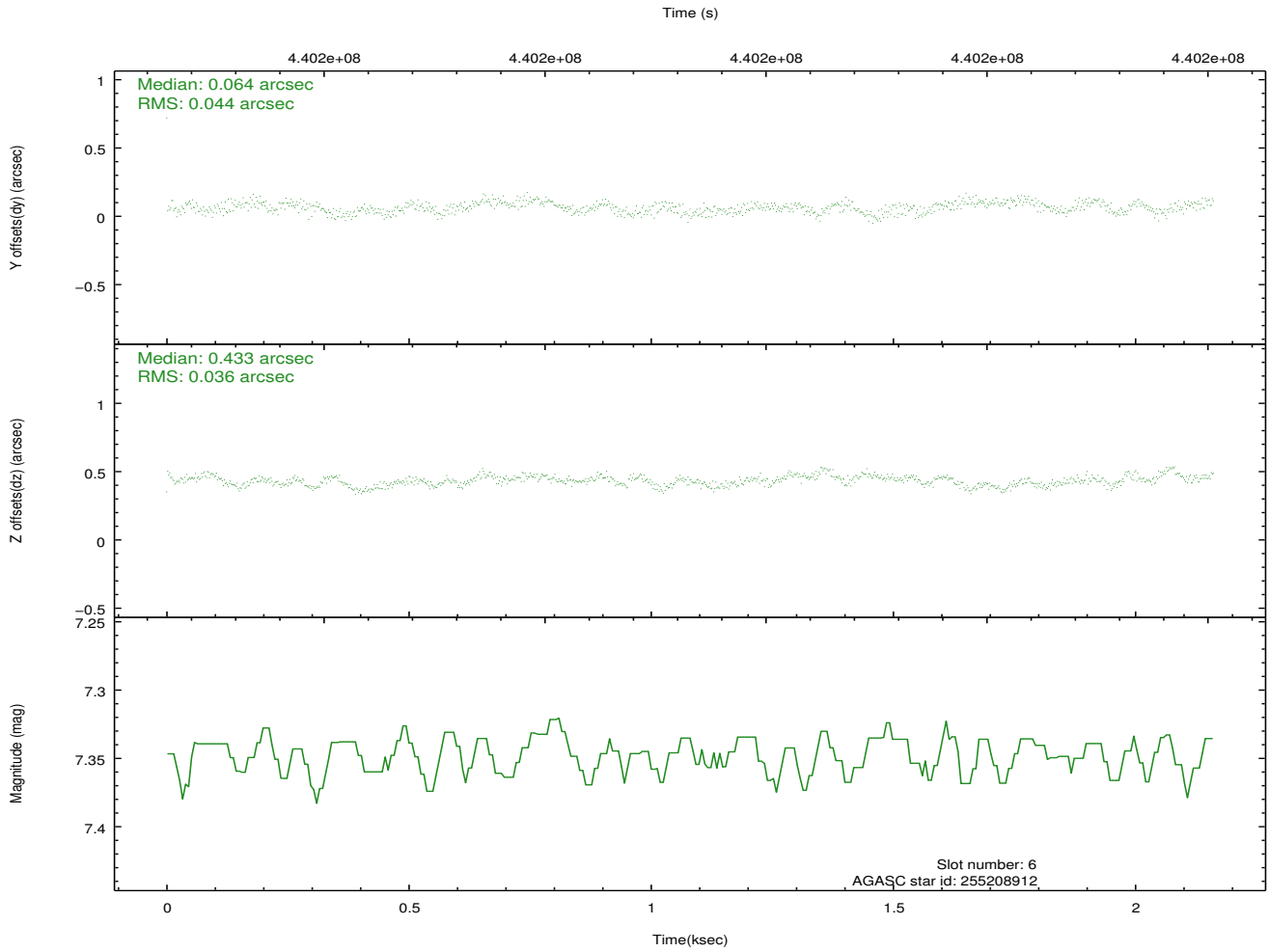
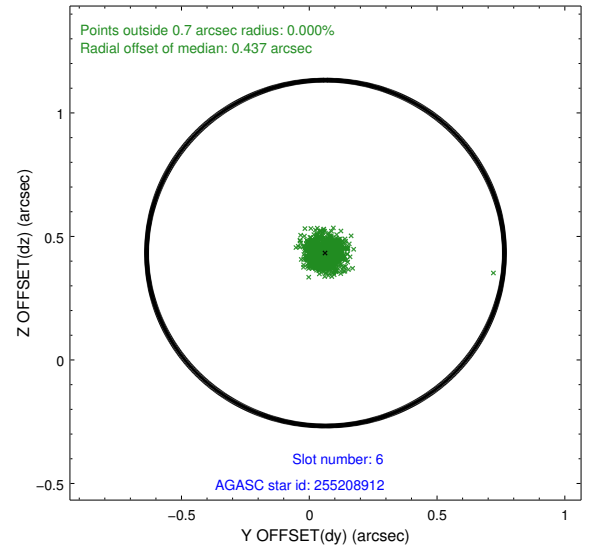
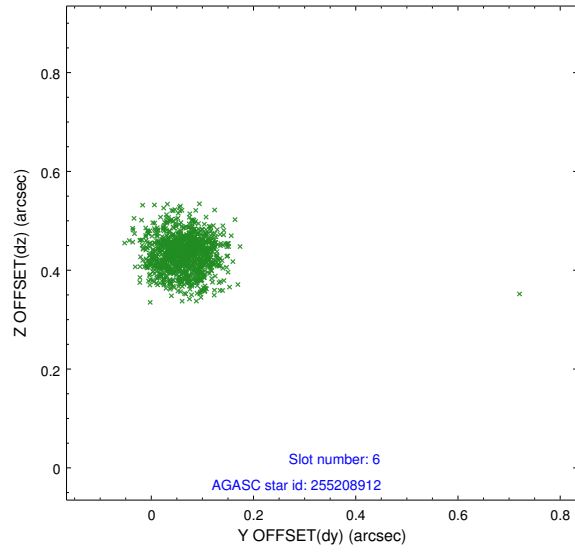
2.4.2 Slot 4



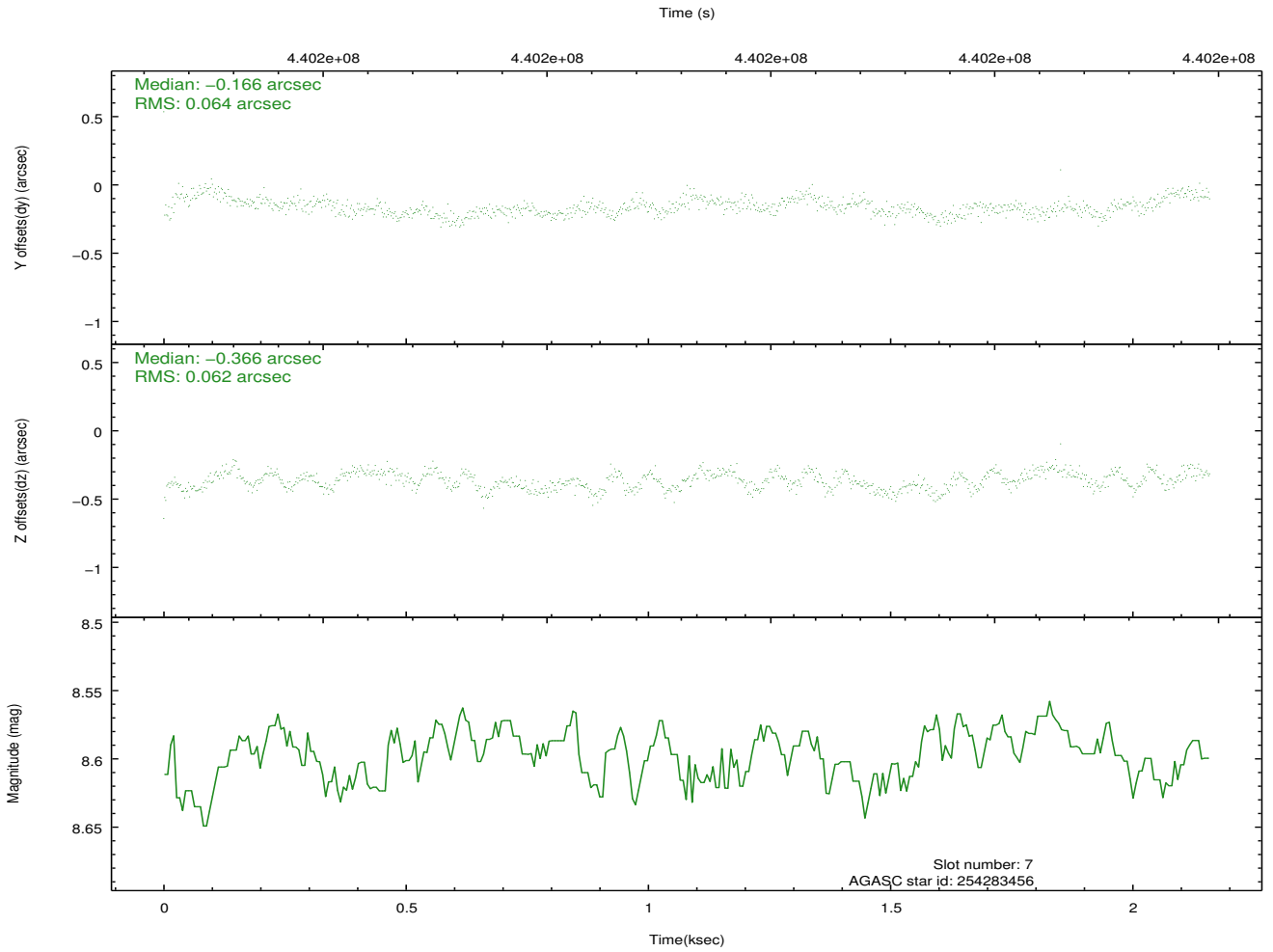
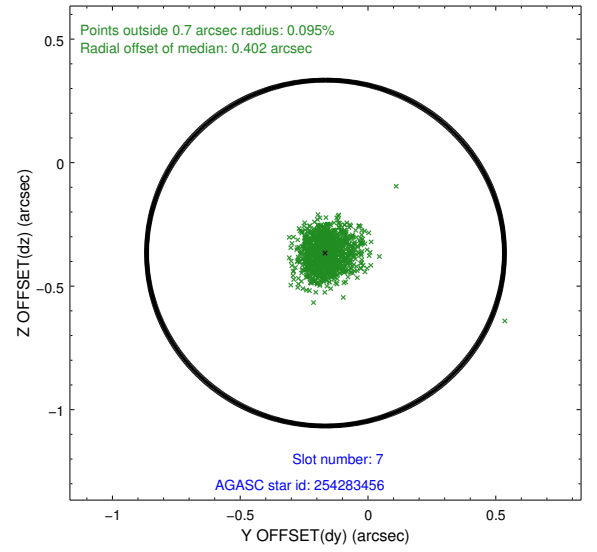
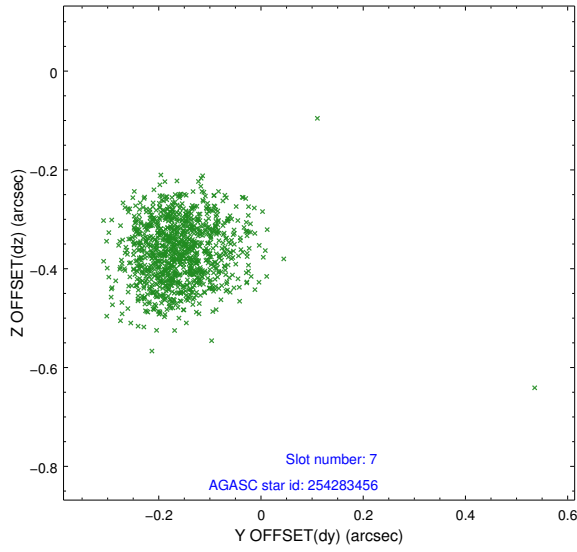
2.4.3 Slot 5



2.4.4 Slot 6

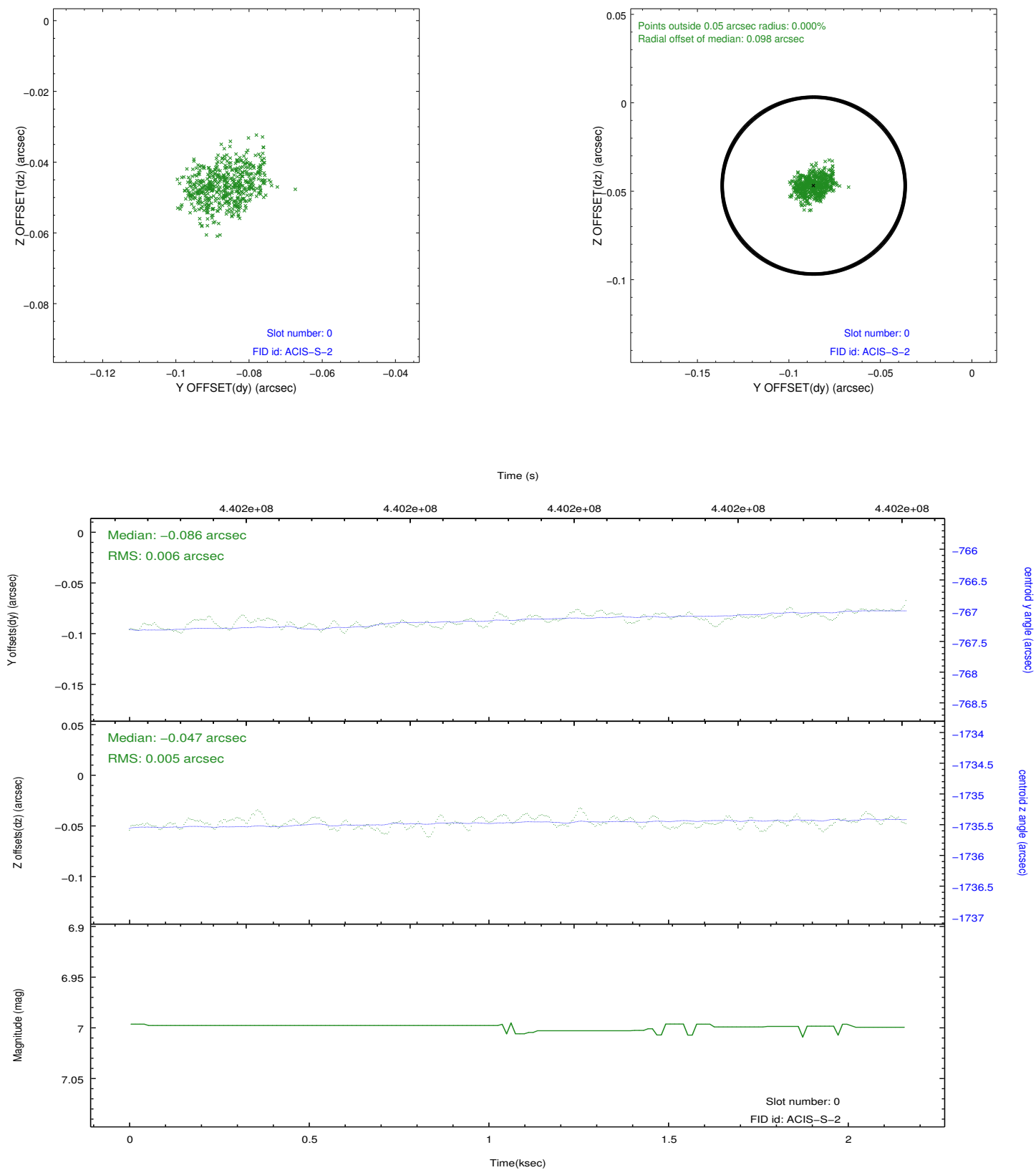


2.4.5 Slot 7

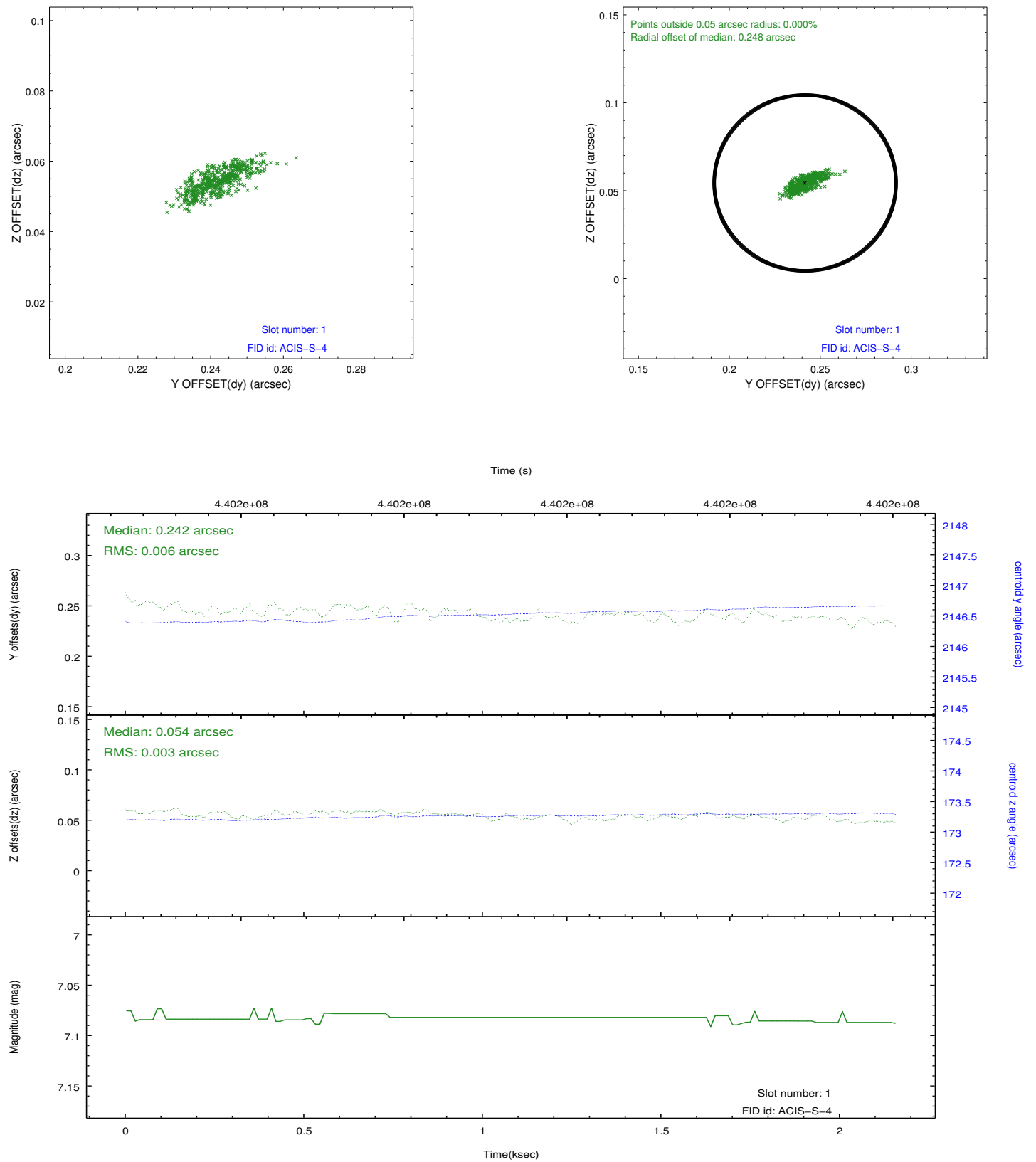


2.5 FID Slots

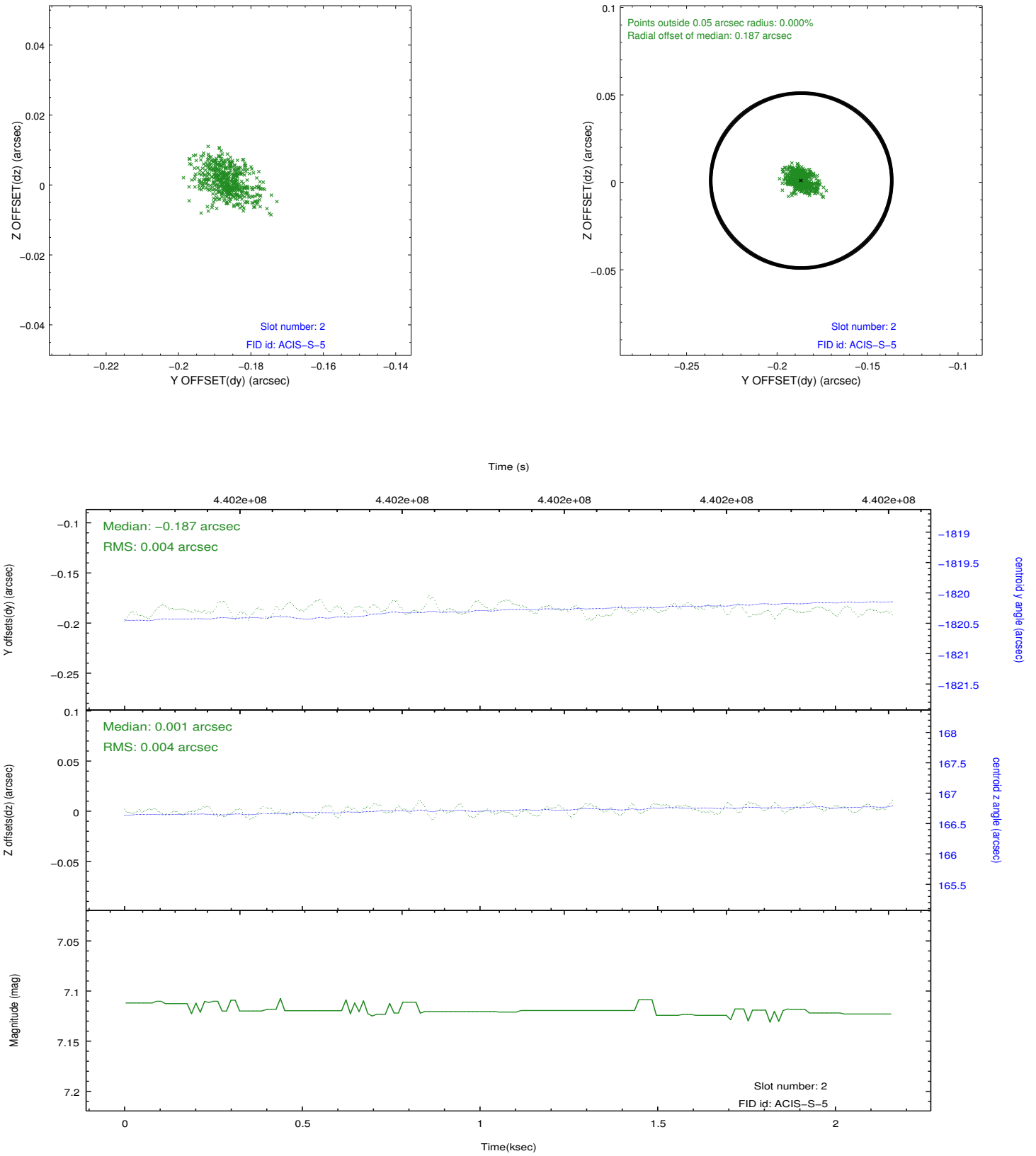
2.5.1 Slot 0



2.5.2 Slot 1



2.5.3 Slot 2



A Summary

A.1 Status

V&V Scientist	Beth Sundheim
V&V Date (YYYY-MM-DD)	2012.02.29
V&V Edition	1
V&V Disposition and Status	OK
V&V Charge Time	2.0387569202781

A.2 Comments