

V&V Reference Report

L2 ASCDS Version : 8.4.5

Observation 12322 - L2 Version 2
Chandra X-Ray Center

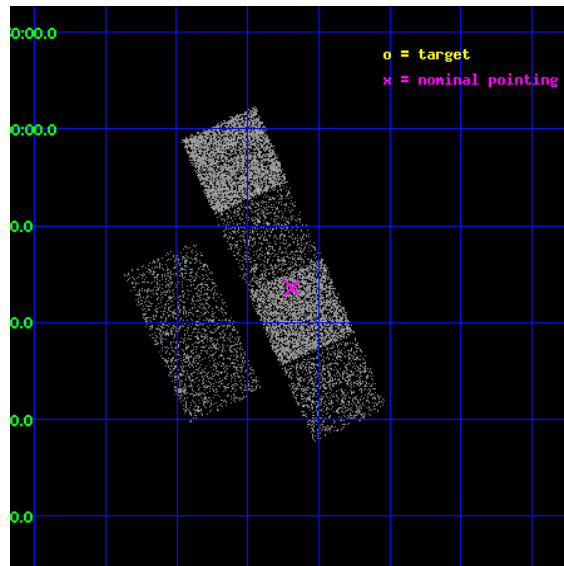
L2 Processing Date : Jul 7 2012

Contents

1	Front	2
2	OBI	3
2.1	OBI	3
2.1.1	Images	3
2.1.2	Bias	3
2.1.3	Parameters	4
2.1.4	Events	4
2.2	Compared Parameters	5
2.3	Aspect	6
2.4	Star Slots	9
2.4.1	Slot 3	9
2.4.2	Slot 4	10
2.4.3	Slot 5	11
2.4.4	Slot 6	12
2.4.5	Slot 7	13
2.5	FID Slots	14
2.5.1	Slot 0	14
2.5.2	Slot 1	15
2.5.3	Slot 2	16
A	Summary	17
A.1	Status	17
A.2	Comments	17

1 Front

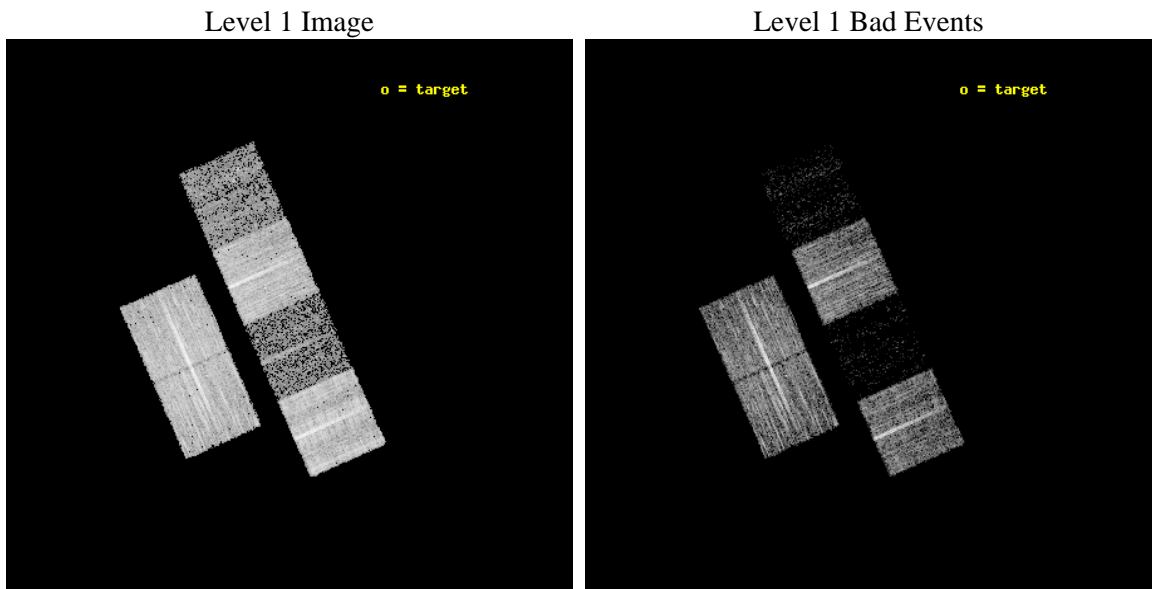
seq_num	100079	Sequence number
obs_id	12322	Observation id
title	Comet 103P/Hartley 2 During the EPOXI Spacecraft Encounter	Proposa
observer	Dr. Carey Lisse	Principal investigator
object	103P/Hartley 2	Source name
dtcycle	0	
cycle	P	events from which exps? Prim/Second/Both
ra_targ	113.0	Observer's specified target RA [deg]
dec_targ	-7.883333	Observer's specified target Dec [deg]
ra_nom	113.04730079465	Nominal RA [deg]
dec_nom	-7.273674677279	Nominal Dec [deg]
roll_nom	66.048842058643	Nominal Roll [deg]
revision	2	Processing version of data
ontime	8963.1999666691	Sum of GTIs [s]
livetime	8849.7025317	Livetime [s]
ontime2	8963.1999666691	Sum of GTIs [s]
ontime3	8959.9589563608	Sum of GTIs [s]
ontime5	8963.1999666691	Sum of GTIs [s]
ontime6	8963.1999666691	Sum of GTIs [s]
ontime7	8963.1999666691	Sum of GTIs [s]
ontime8	8959.9589464068	Sum of GTIs [s]
l2events	14683	Number of level 2 events



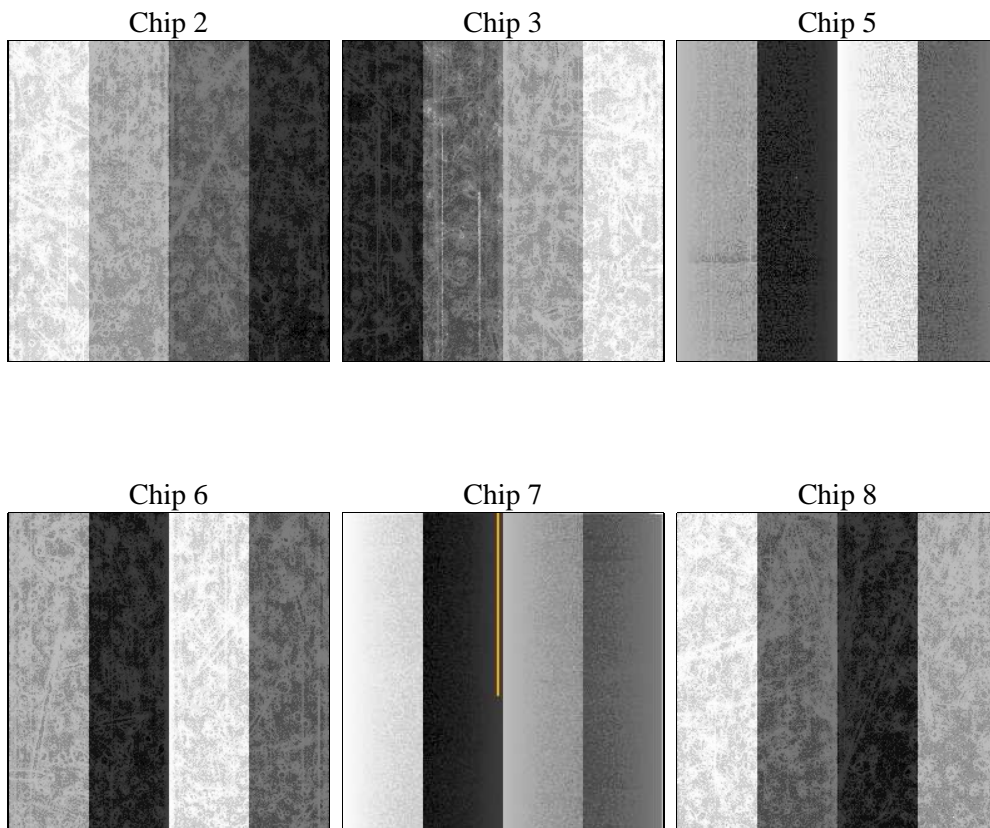
2 OBI

2.1 OBI

2.1.1 Images



2.1.2 Bias



2.1.3 Parameters

obi_num	0	Obi number	sched_exp_time	9000.000000	[s] Scheduled observation exposure time
ascdsver	8.4.5	Processing system revision	ontime	8963.1999666691	Sum of GTIs [s]
caldsver	4.5.0	 	ontime2	8963.1999666691	Sum of GTIs [s]
date	2012-07-07T03:06:42	Date and time of file creation	ontime3	8959.9589563608	Sum of GTIs [s]
revision	2	Processing version of data	ontime5	8963.1999666691	Sum of GTIs [s]
			ontime6	8963.1999666691	Sum of GTIs [s]
			ontime7	8963.1999666691	Sum of GTIs [s]
			ontime8	8959.9589464068	Sum of GTIs [s]
			l1events	184201	Number of level 1 events

2.1.4 Events

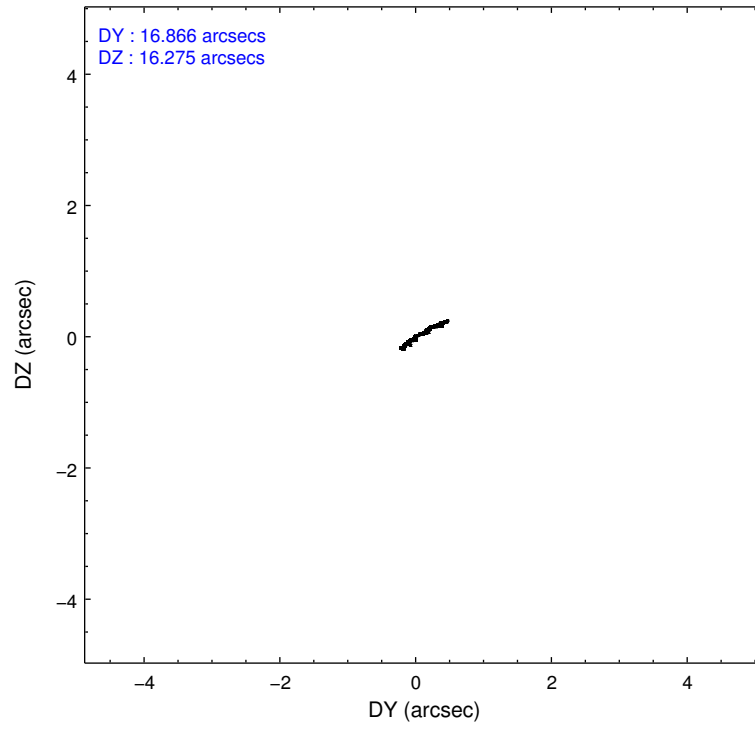
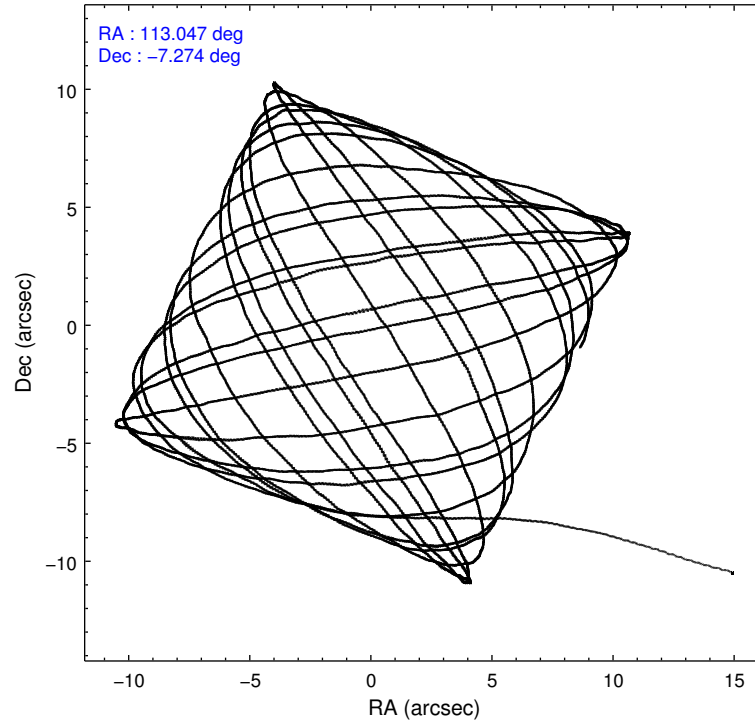
	ccd 2	ccd 3	ccd 5	ccd 6	ccd 7	ccd 8
level 1 events	41574	40090	9138	39748	6954	46697
rejected events	39613	38652	3216	37917	1768	32449
rejected %	95%	96%	35%	95%	25%	69%

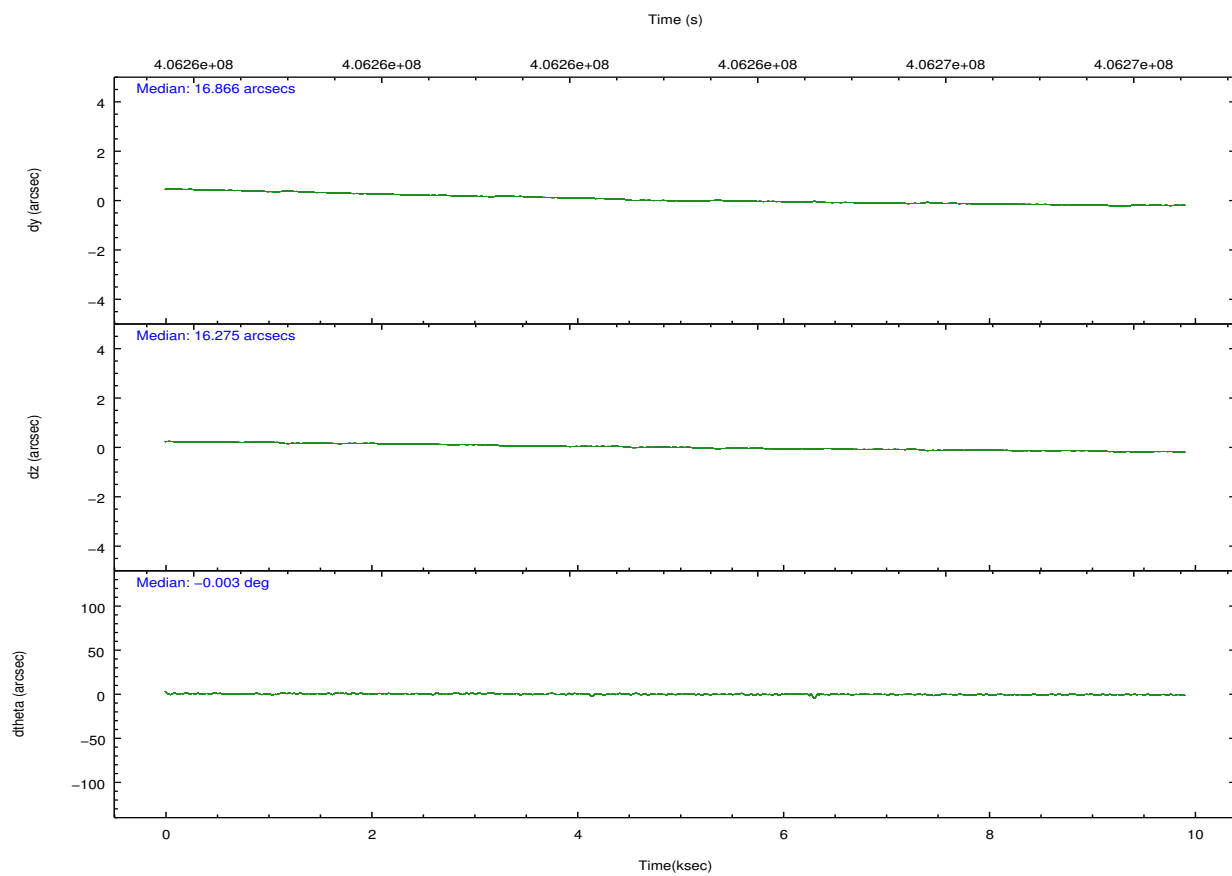
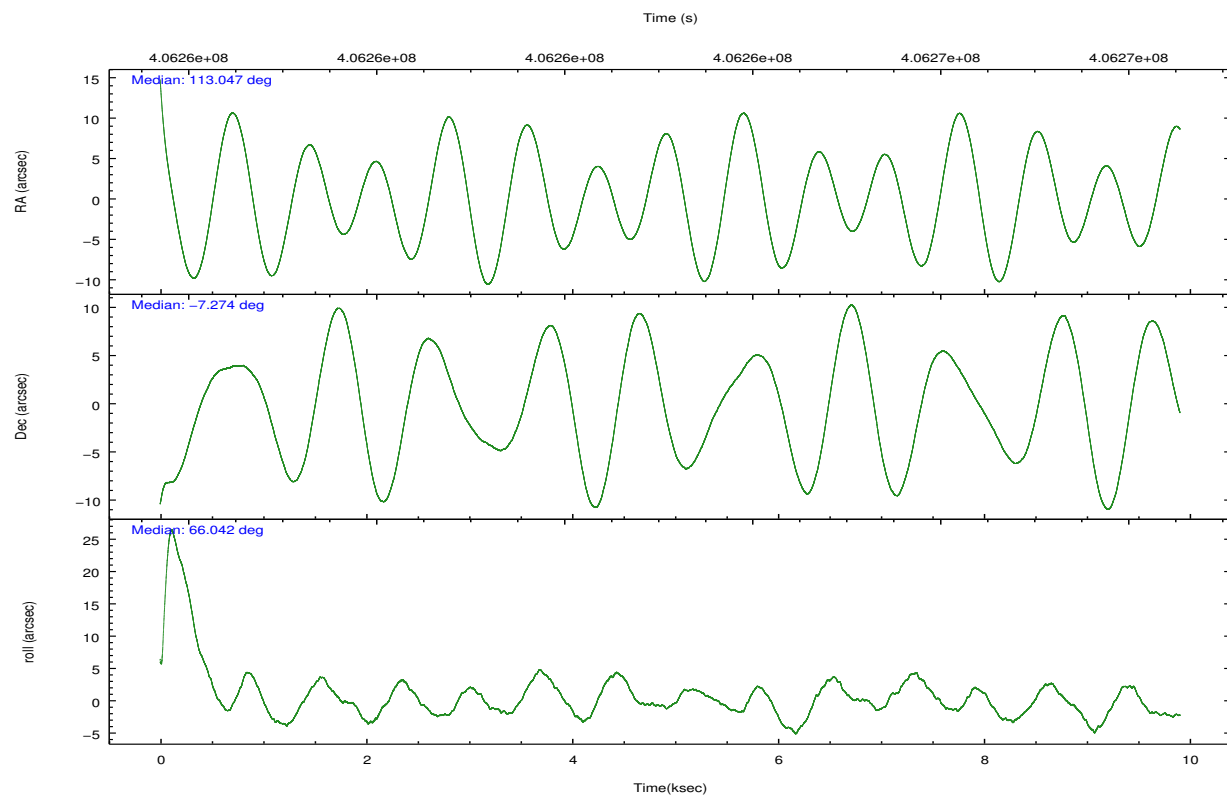
	ccd 2	ccd 3	ccd 5	ccd 6	ccd 7	ccd 8
grade 0 events	751	699	1669	902	1617	4082
	1%	1%	18%	2%	23%	8%
grade 1 events	15	13	135	21	68	49
	0%	0%	1%	0%	0%	0%
grade 2 events	521	189	2354	388	1753	3386
	1%	0%	25%	0%	25%	7%
grade 3 events	244	236	629	214	653	1743
	0%	0%	6%	0%	9%	3%
grade 4 events	239	200	648	229	627	1565
	0%	0%	7%	0%	9%	3%
grade 5 events	57	41	542	33	257	269
	0%	0%	5%	0%	3%	0%
grade 6 events	233	134	719	124	604	3693
	0%	0%	7%	0%	8%	7%
grade 7 events	39514	38578	2442	37837	1375	31910
	95%	96%	26%	95%	19%	68%

2.2 Compared Parameters

Parameter	Planned	Actual	Parameter	Planned	Actual
Instrument	ACIS	ACIS	Obspar format version number	7	7
Detector	ACIS-235678	ACIS-235678	Obspar file type	PREDICTED	ACTUAL
Grating	NONE	NONE	Obspar update status	NONE	UPDATED
Data mode	VFAINT	VFAINT	Number of optional ACIS chips dropped	0	0
Observation mode	POINTING	POINTING	On-chip summing requested	N	N
[deg] Pointing RA	113.050583	113.0473007946515	Subarray requested	NONE	NONE
[deg] Pointing Dec	-7.300818	-7.273674677279033	Alternating exposures requested	N	N
[deg] Pointing Roll	65.892656	66.04884205864251	[s] Primary exposure time	0.000000	3.2
[s] Window start time (MET)	406166466.184000	406166466.184000			
[s] Window stop time (MET)	406512006.184000	406512006.184000			
[mm] SIM focus pos	-0.684267	-0.6828225247311905			
[mm] SIM defocus	0	0.001444936568705701			
[mm] SIM translation stage pos	-190.132523	-190.1400660498719			
[mm] SIM translation stage offset	0	0.00754346686406393			
[s] Observation start time (MET)	406259075.184000	406257478.34283			
Observation start date	2010-11-16T01:43:29	2010-11-16T01:17:58			
[s] Observation end time (MET)	406268075.184000	406268209.58089			
Observation end date	2010-11-16T04:13:29	2010-11-16T04:16:49			
Read mode	TIMED	TIMED			

2.3 Aspect



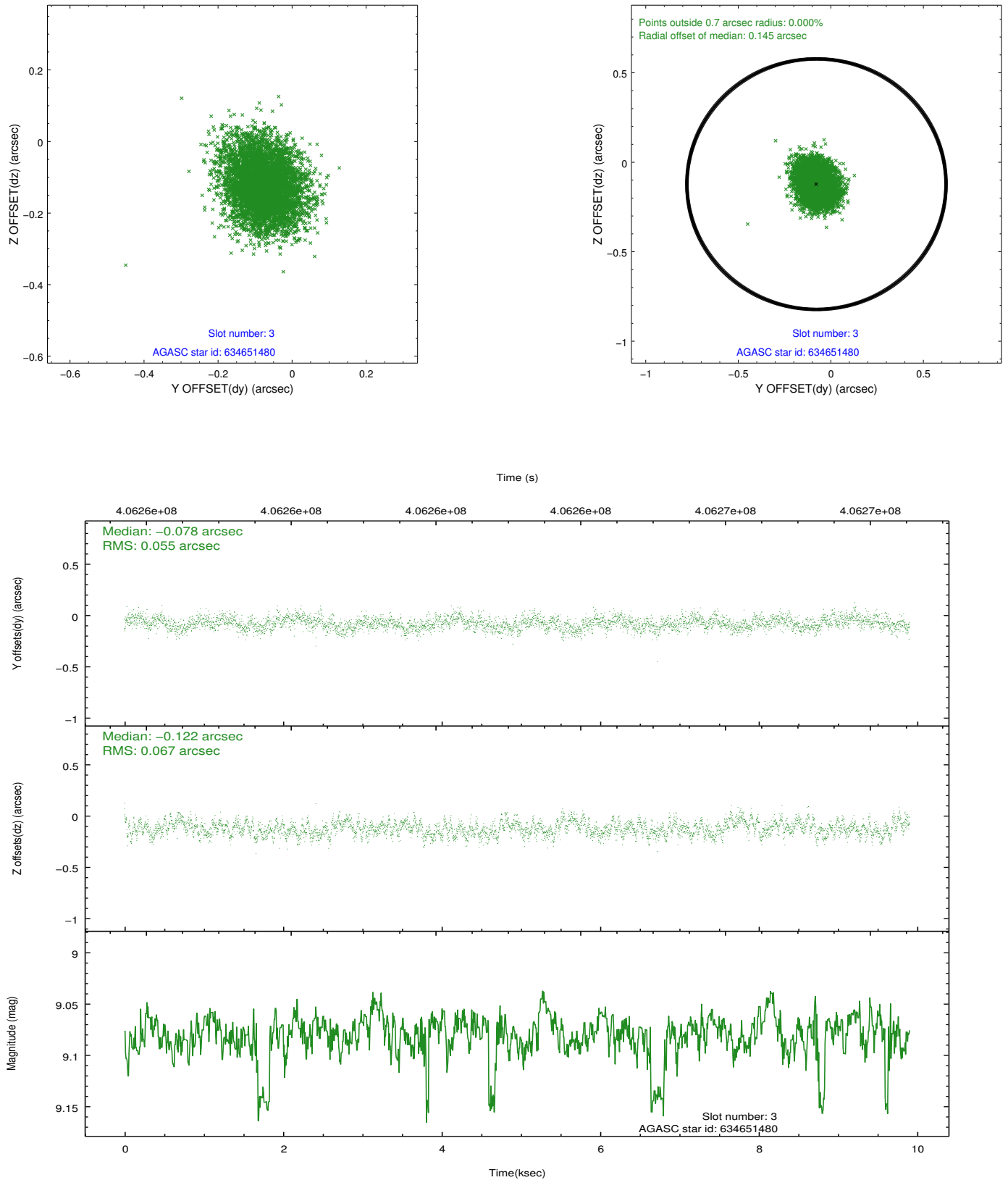


Slot Statistics

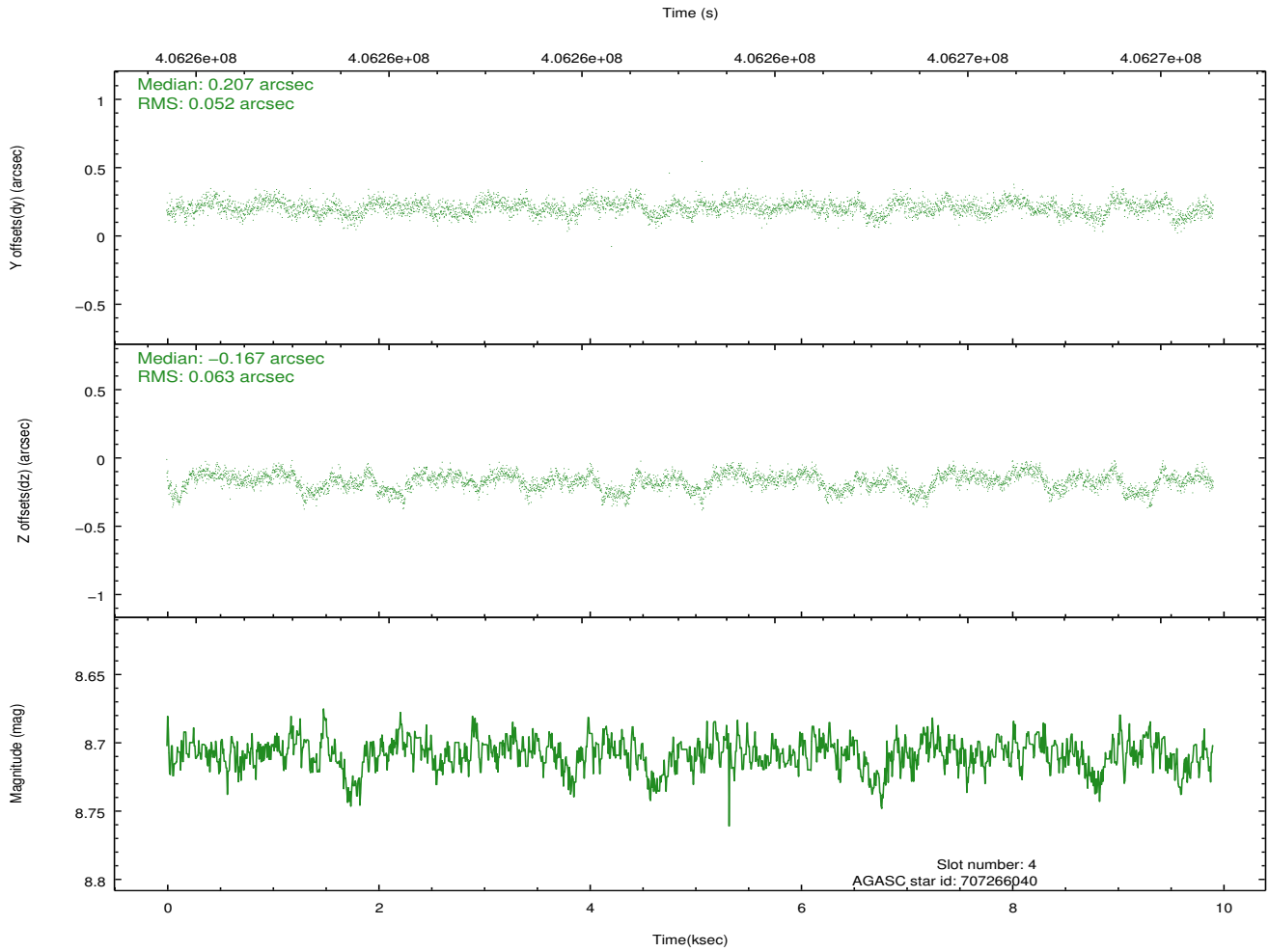
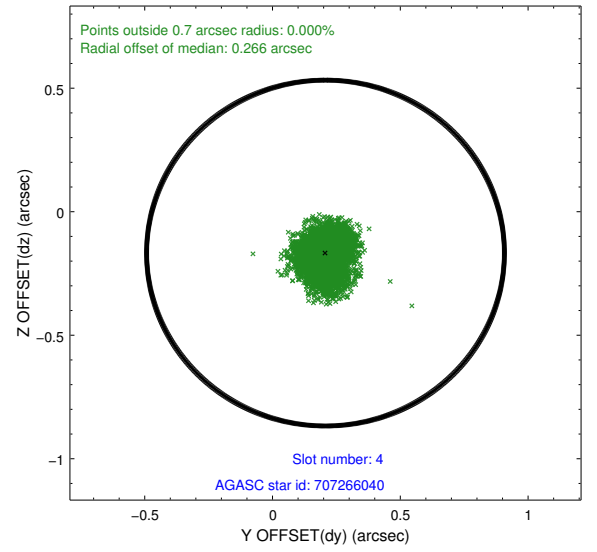
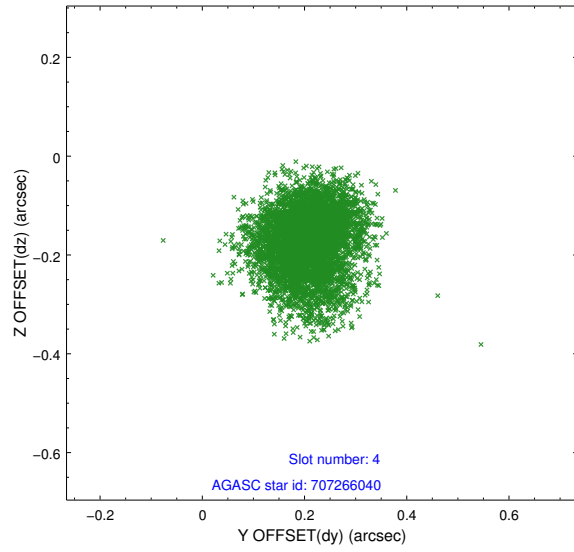
slot	status	id	mag	n_pts	med_dy	med_dz	dr1	dr2	ra	dec	mean_y	mean_z
0	FID	ACIS-S-1	7.02	2417	0.086	-0.064	0.007	0.012	0.000000	0.000000	926.09	-1733.44
1	FID	ACIS-S-2	6.95	2417	-0.175	-0.023	0.008	0.013	0.000000	0.000000	-769.78	-1738.42
2	FID	ACIS-S-4	7.02	2417	0.062	0.092	0.008	0.017	0.000000	0.000000	2143.14	170.27
3	GUIDE	634651480	9.08	4821	-0.078	-0.122	0.093	0.149	113.193054	-7.234072	427.38	-366.11
4	GUIDE	707266040	8.71	4832	0.207	-0.167	0.087	0.141	112.718943	-7.812308	-2163.71	327.19
5	GUIDE	707266752	8.21	4833	0.019	-0.180	0.077	0.127	112.811260	-7.760056	-1858.06	103.82
6	GUIDE	634666936	9.79	4827	-0.235	0.272	0.194	0.338	113.654440	-7.411850	514.31	-2130.90
7	GUIDE	707402440	9.05	4832	0.084	0.184	0.104	0.171	113.217420	-7.943613	-1868.70	-1488.43

2.4 Star Slots

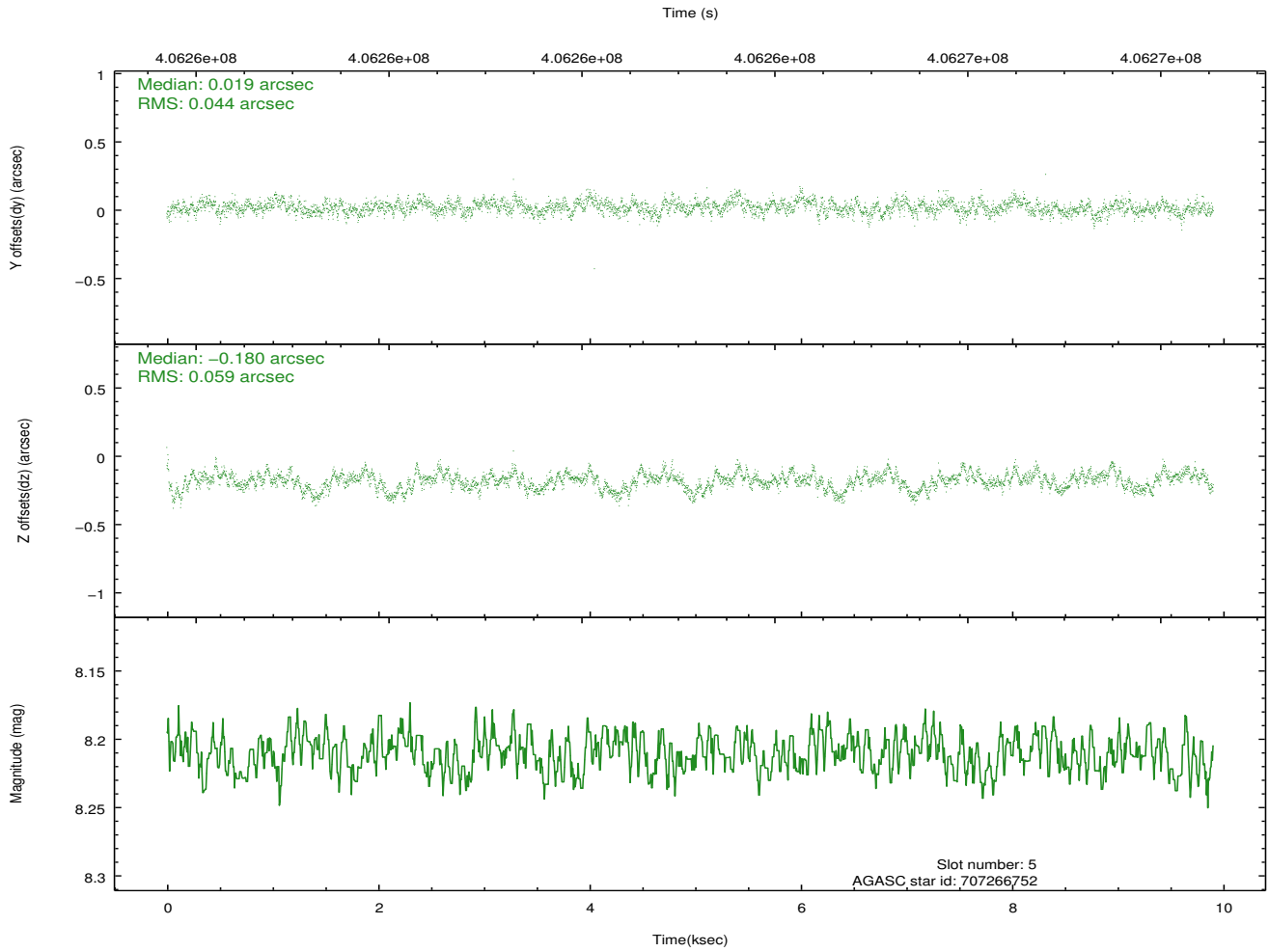
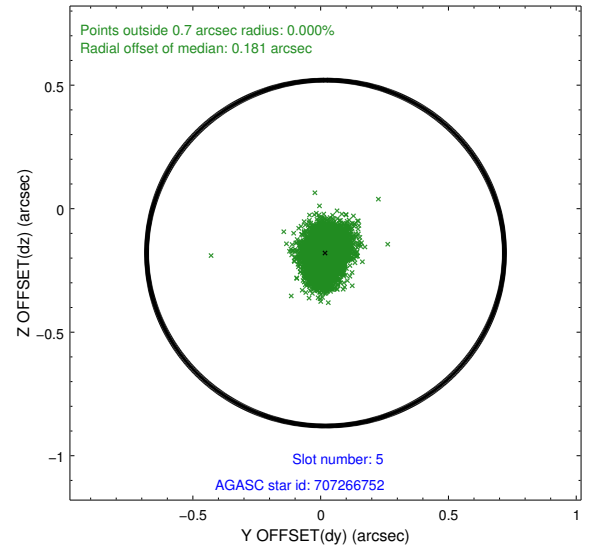
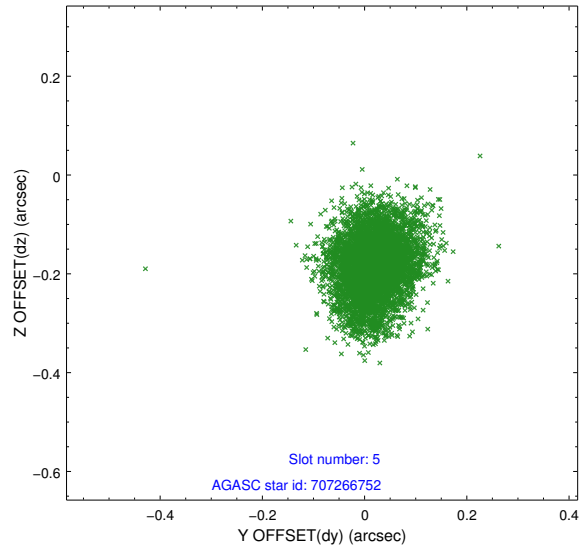
2.4.1 Slot 3



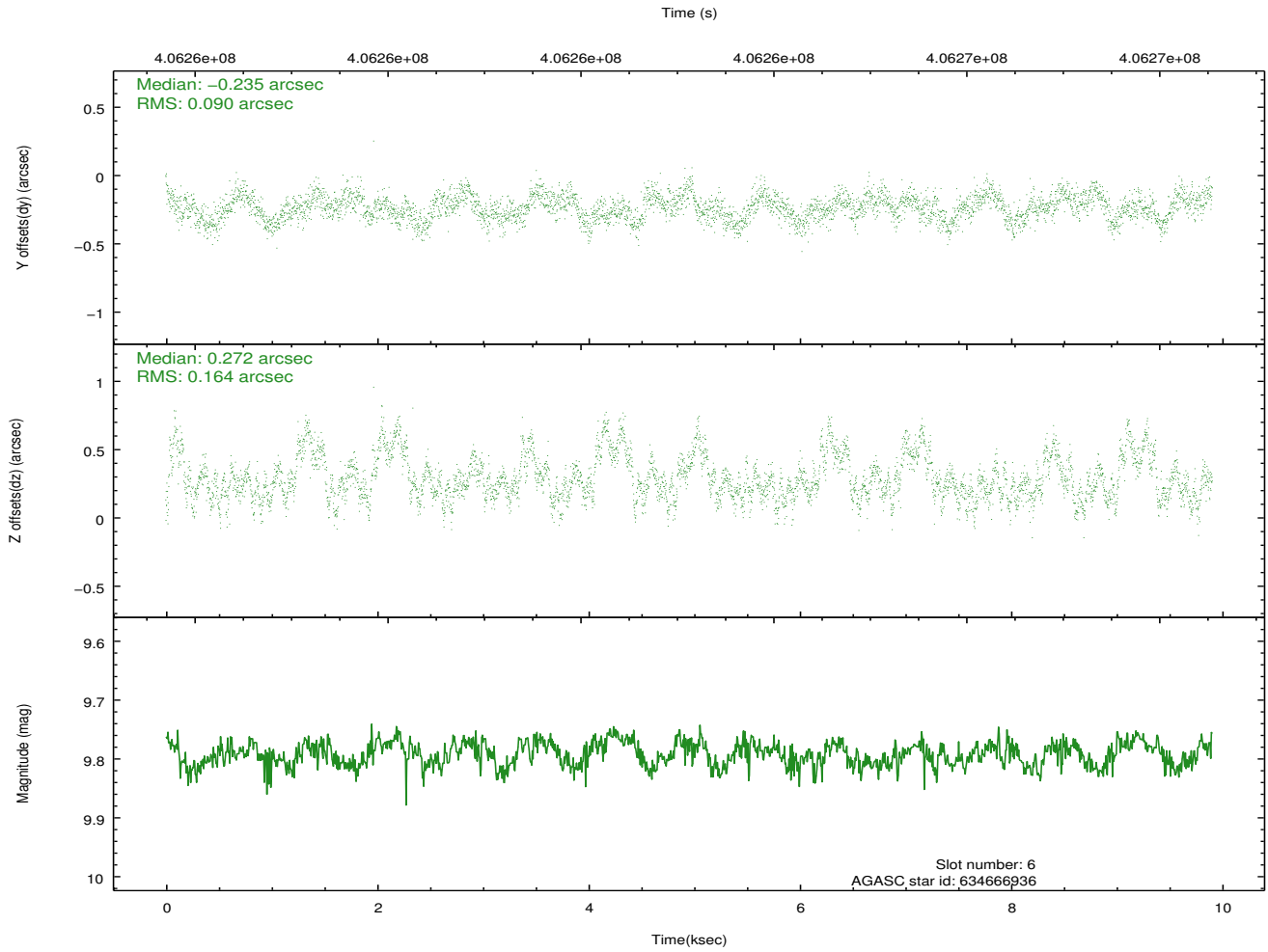
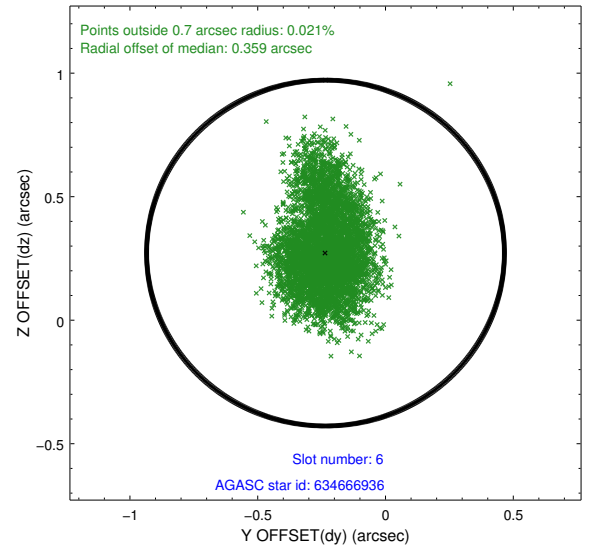
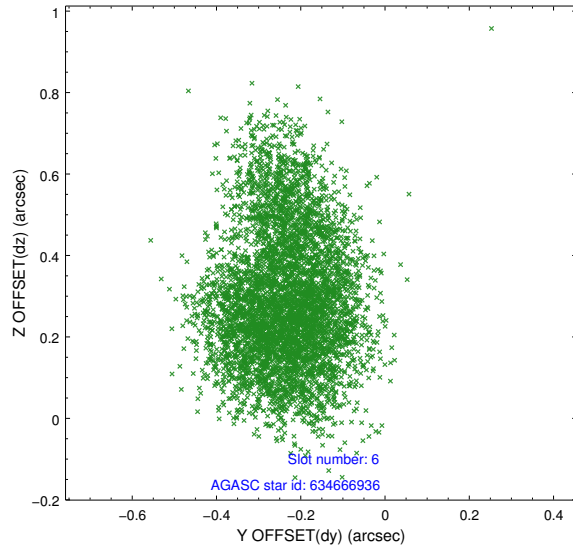
2.4.2 Slot 4



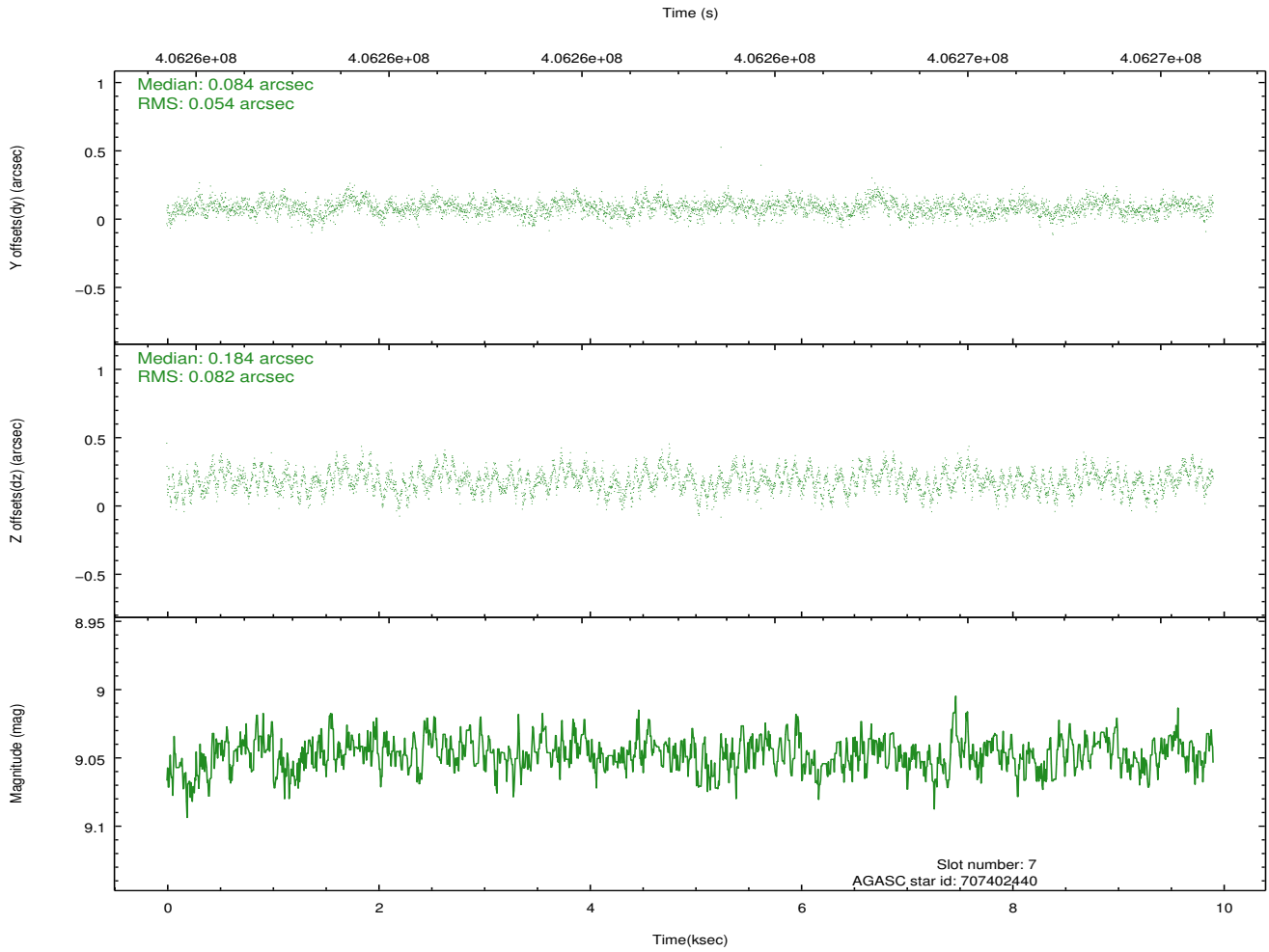
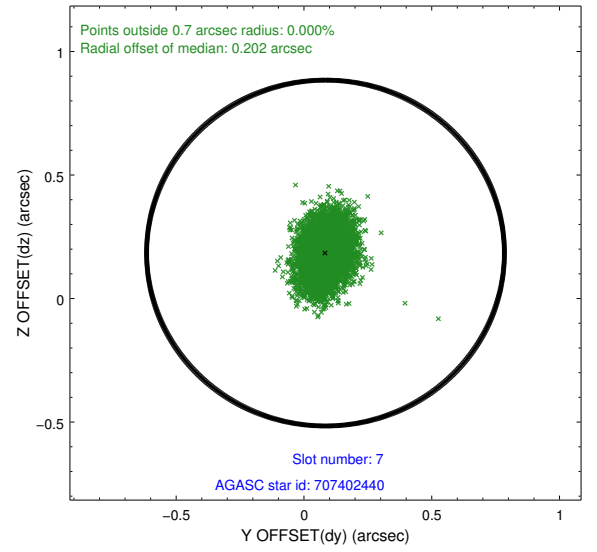
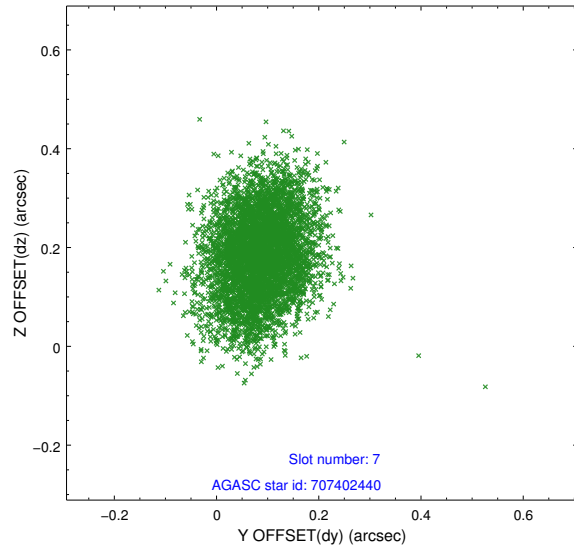
2.4.3 Slot 5



2.4.4 Slot 6

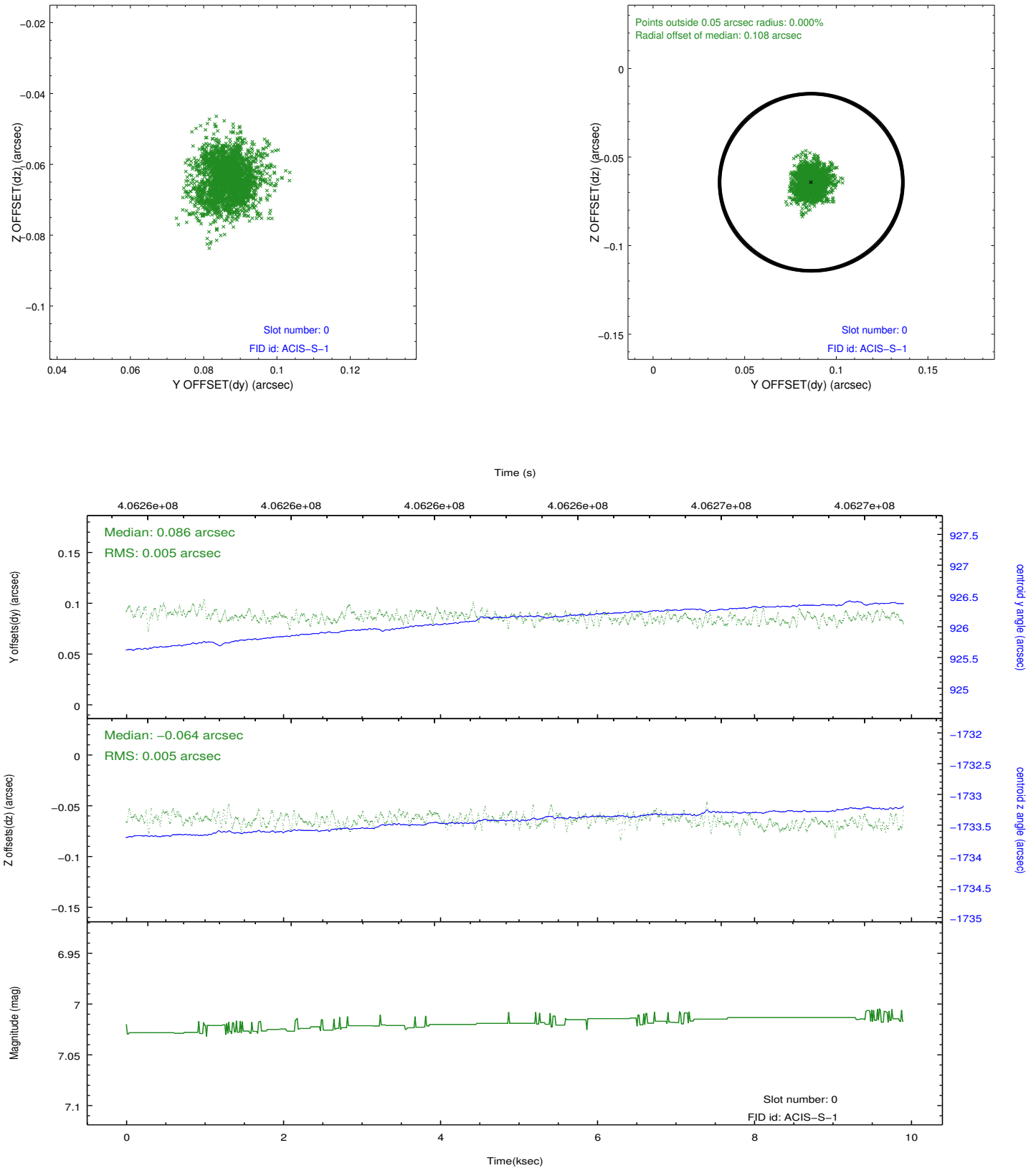


2.4.5 Slot 7

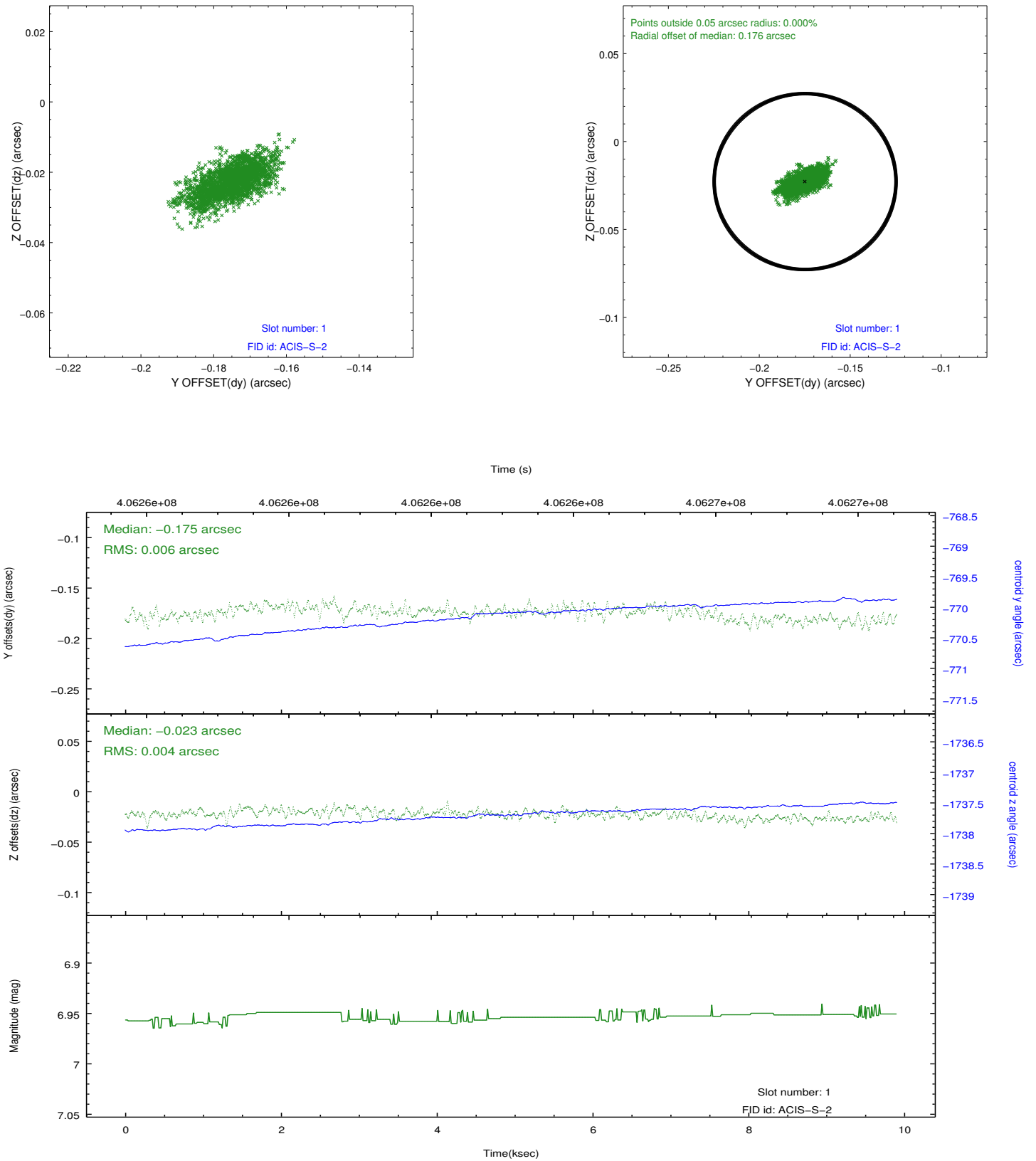


2.5 FID Slots

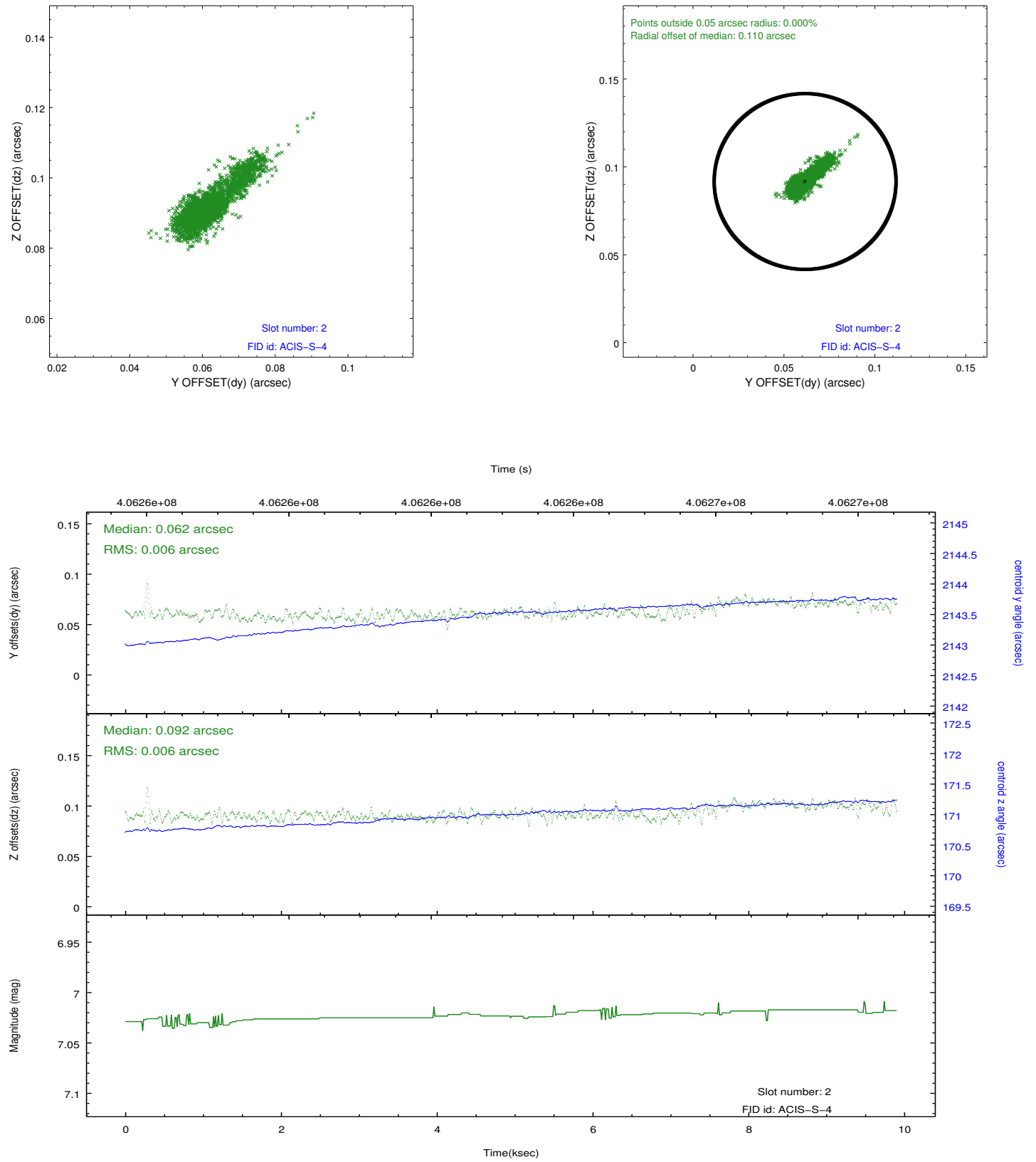
2.5.1 Slot 0



2.5.2 Slot 1



2.5.3 Slot 2



A Summary

A.1 Status

V&V Scientist	Jen Lauer
V&V Date (YYYY-MM-DD)	2012.07.16
V&V Edition	1
V&V Disposition and Status	OK
V&V Charge Time	8.9631999666691

A.2 Comments

The comet is a moving object with respect to the satellite. Users will need to run sso_freeze or similar software to reposition the events into the reference frame of the comet.

====

Window constraint met.