

V&V Reference Report

L2 ASCDS Version : 8.4.5

Observation 12102 - L2 Version 2
Chandra X-Ray Center

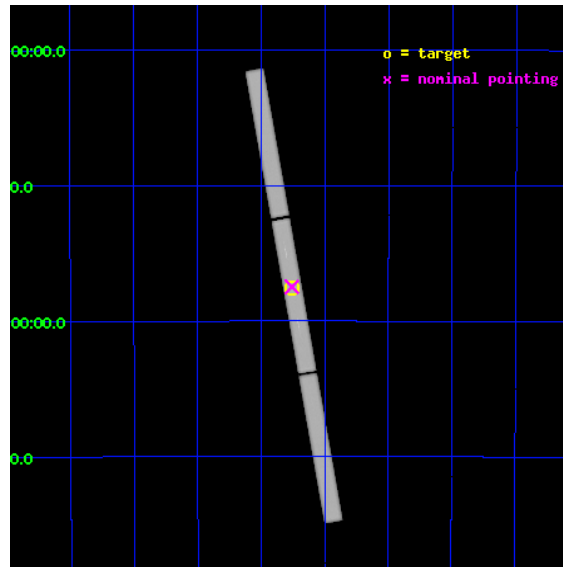
L2 Processing Date : Jun 27 2012

Contents

1	Front	2
2	OBI	3
2.1	OBI	3
2.1.1	Images	3
2.1.2	Parameters	4
2.1.3	Events	4
2.2	Compared Parameters	5
2.3	Aspect	6
2.4	Star Slots	9
2.4.1	Slot 3	9
2.4.2	Slot 4	10
2.4.3	Slot 5	11
2.4.4	Slot 6	12
2.4.5	Slot 7	13
2.5	FID Slots	14
2.5.1	Slot 0	14
2.5.2	Slot 1	15
2.5.3	Slot 2	16
3	Gratings	17
3.1	LETG Arm	17
A	Summary	19
A.1	Status	19
A.2	Comments	19

1 Front

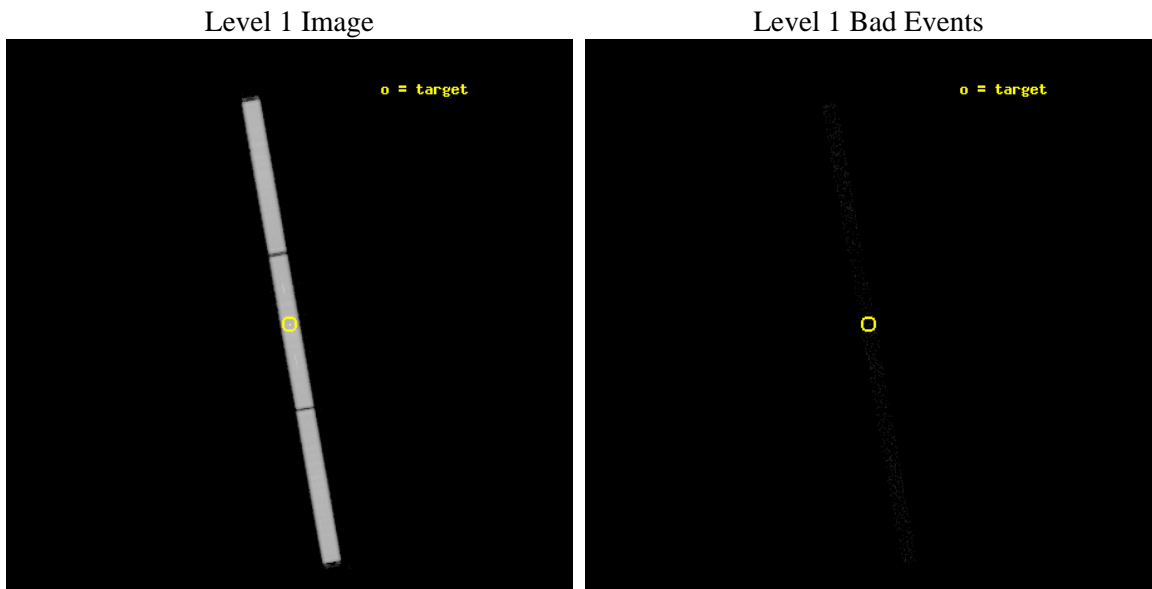
seq_num	300277	Sequence number
obs_id	12102	Observation id
title	U Sco in outburst	Proposal title
observer	Dr Marina Orio	Principal investigator
object	U Scorpii	Source name
ra_targ	245.627917	Observer's specified target RA [deg]
dec_targ	-17.878361	Observer's specified target Dec [deg]
ra_nom	245.62890396764	Nominal RA [deg]
dec_nom	-17.873718181145	Nominal Dec [deg]
roll_nom	79.848282086651	Nominal Roll [deg]
revision	2	Processing version of data
ontime	23244.182428241	[s]
livetime	23002.139608702	Ontime multiplied by DTCOR
l2events	2064870	Number of level 2 events



2 OBI

2.1 OBI

2.1.1 Images



2.1.2 Parameters

obi_num	0	Obi number	sched_exp_time	23100.000000	[s] Scheduled observation exposure time
ascdsver	8.4.5	Processing system revision	ontime	23244.182428241	[s]
caldsver	4.5.0	 	l1events	2770283	Number of level 1 events
date	2012-06-27T16:26:02	Date and time of file creation			
revision	2	Processing version of data			

2.1.3 Events

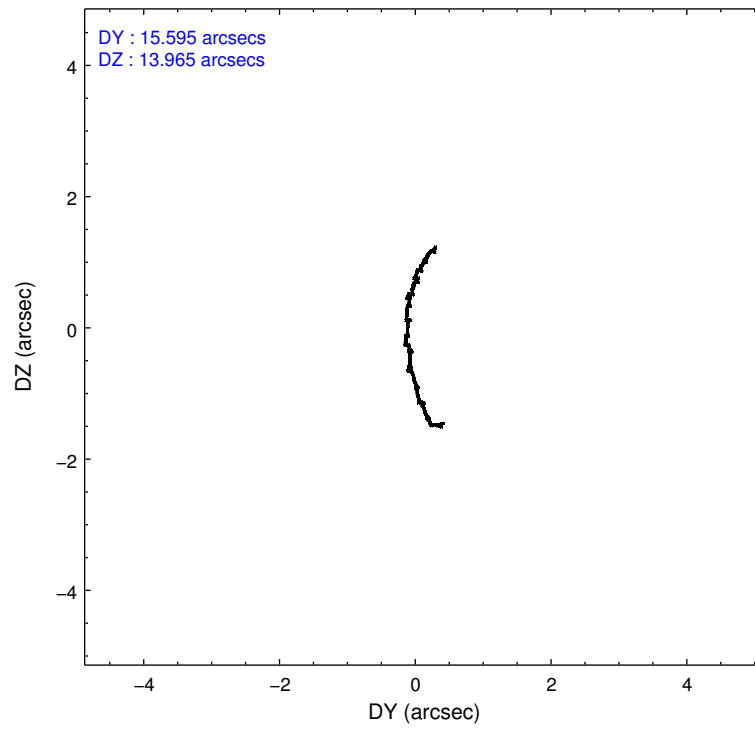
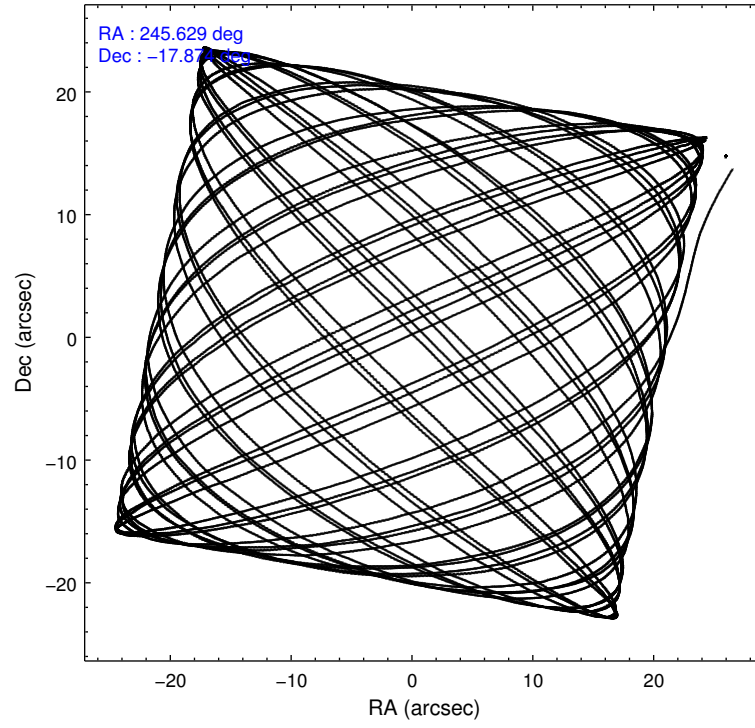
Level 1 Events

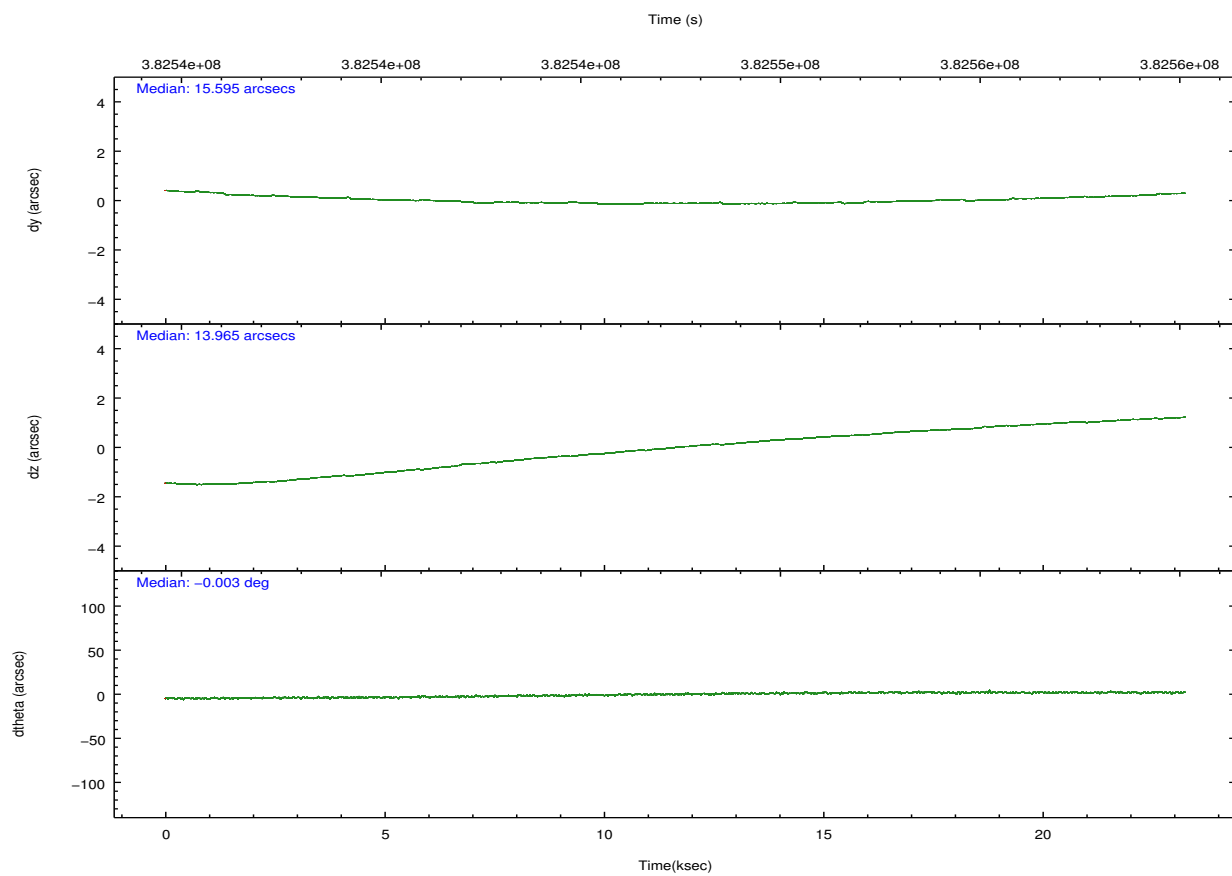
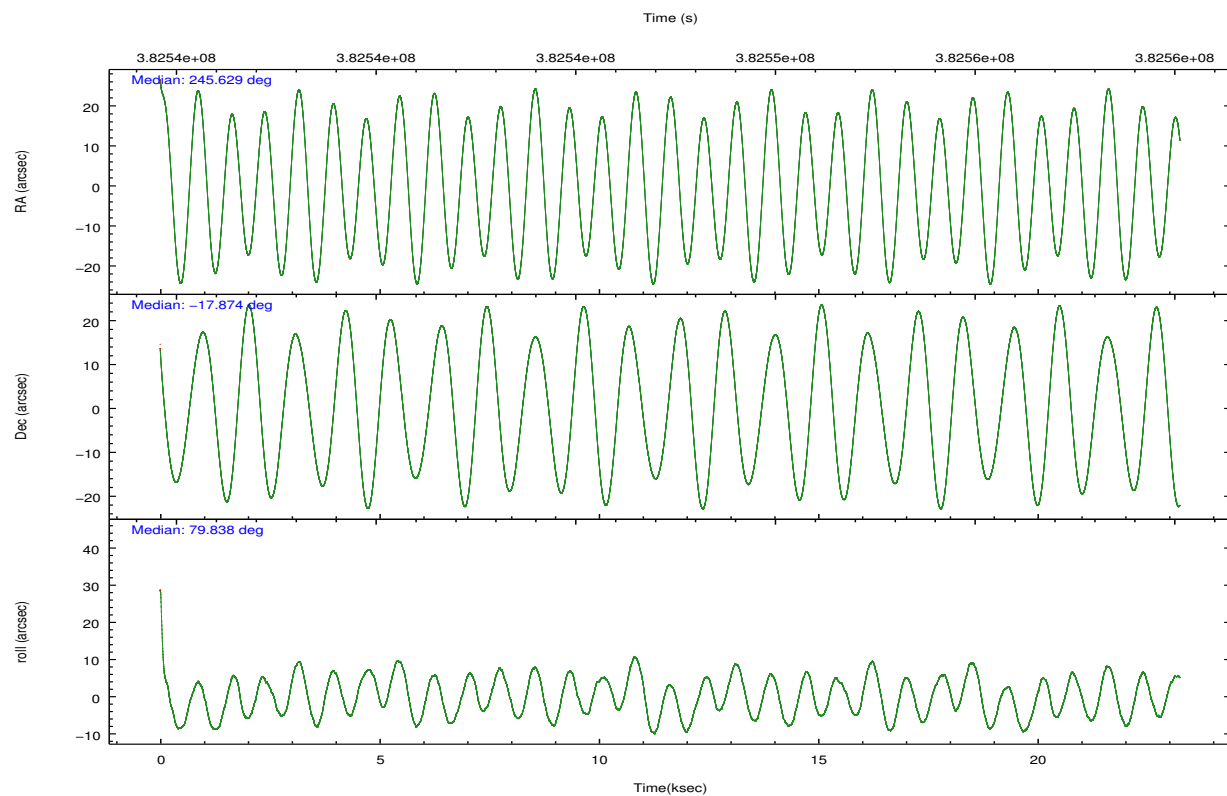
	segment 1	segment 2	segment 3
level 1 events	916645	930548	923090
rejected events	37839	37565	38199
rejected %	4%	4%	4%

2.2 Compared Parameters

Parameter	Planned	Actual	Parameter	Planned	Actual
Instrument	HRC	HRC	Obspar format version number	7	7
Detector	HRC-S	HRC-S	Obspar file type	PREDICTED	ACTUAL
Grating	LETG	LETG	Obspar update status	NONE	UPDATED
Data mode	OBSERVING	OBSERVING			
Observation mode	POINTING	POINTING			
[deg] Pointing RA	245.640513	245.6289039676403			
[deg] Pointing Dec	-17.900164	-17.8737181811452			
[deg] Pointing Roll	79.784502	79.84828208665125			
[mm] SIM focus pos	-1.429586	-1.428180813131781			
[mm] SIM defocus	0.1037507710433287	0.1051558262725154			
[mm] SIM translation stage pos	250.455976	250.466033080201			
[mm] SIM translation stage offset	0	-0.01005468664627074			
[s] Observation start time (MET)	382535875.184000	382534767.96878			
Observation start date	2010-02-14T11:56:49	2010-02-14T11:39:27			
[s] Observation end time (MET)	382558975.184000	382559913.78255			
Observation end date	2010-02-14T18:21:49	2010-02-14T18:38:33			

2.3 Aspect



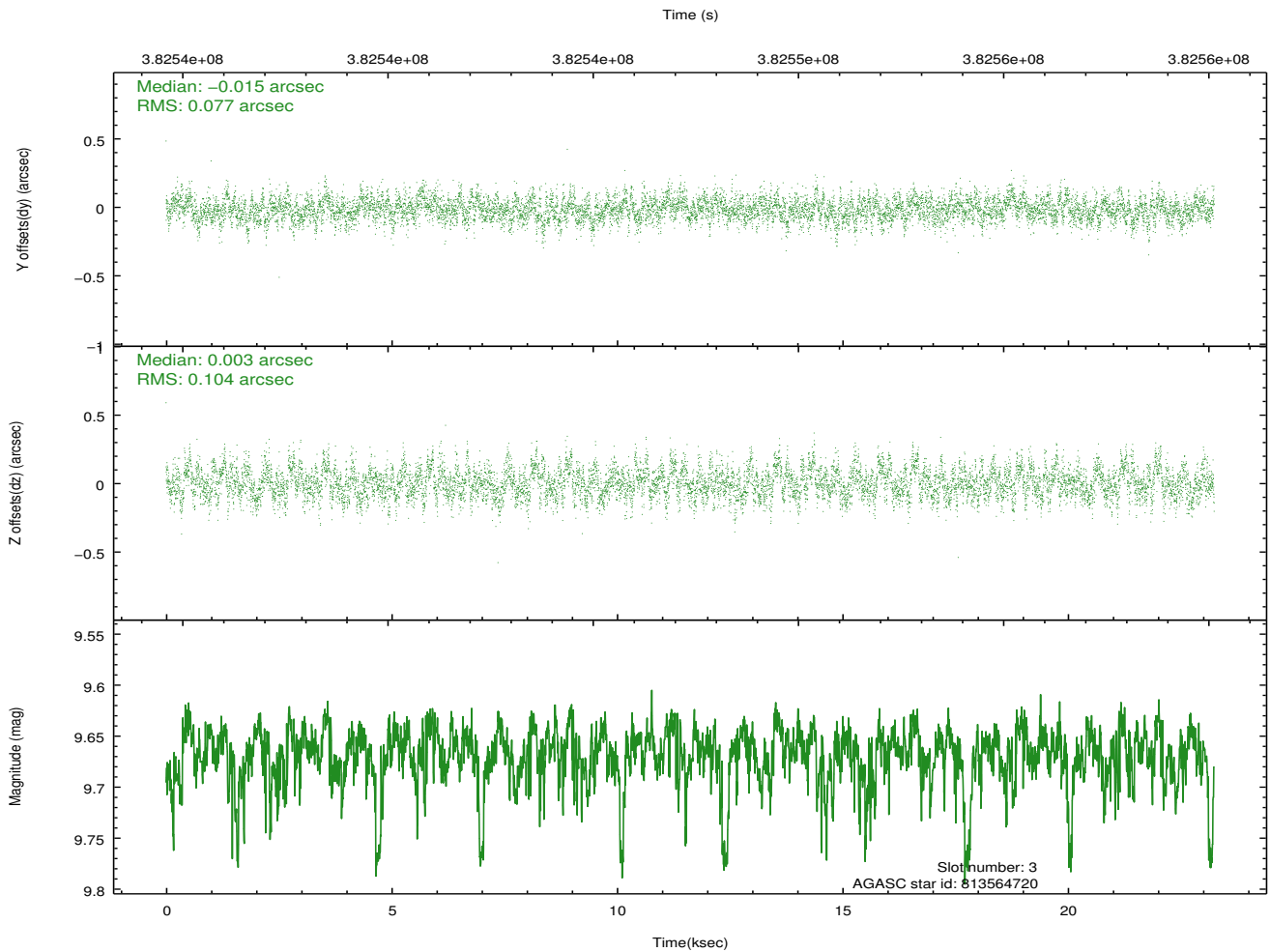
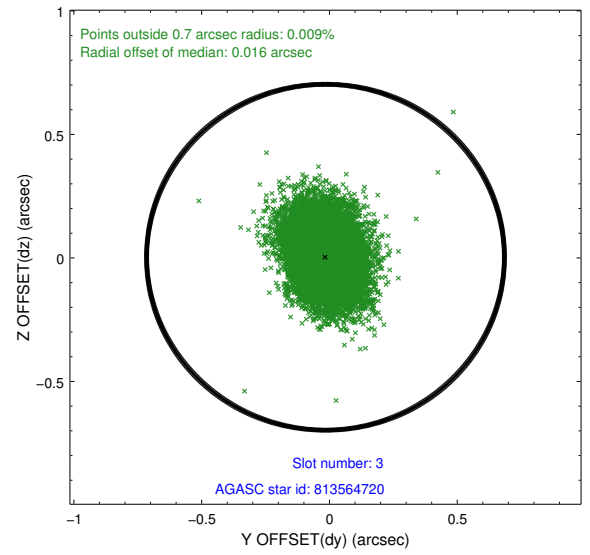
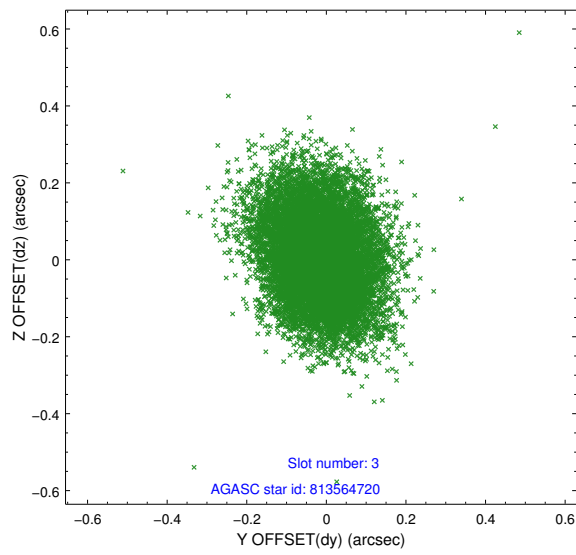


Slot Statistics

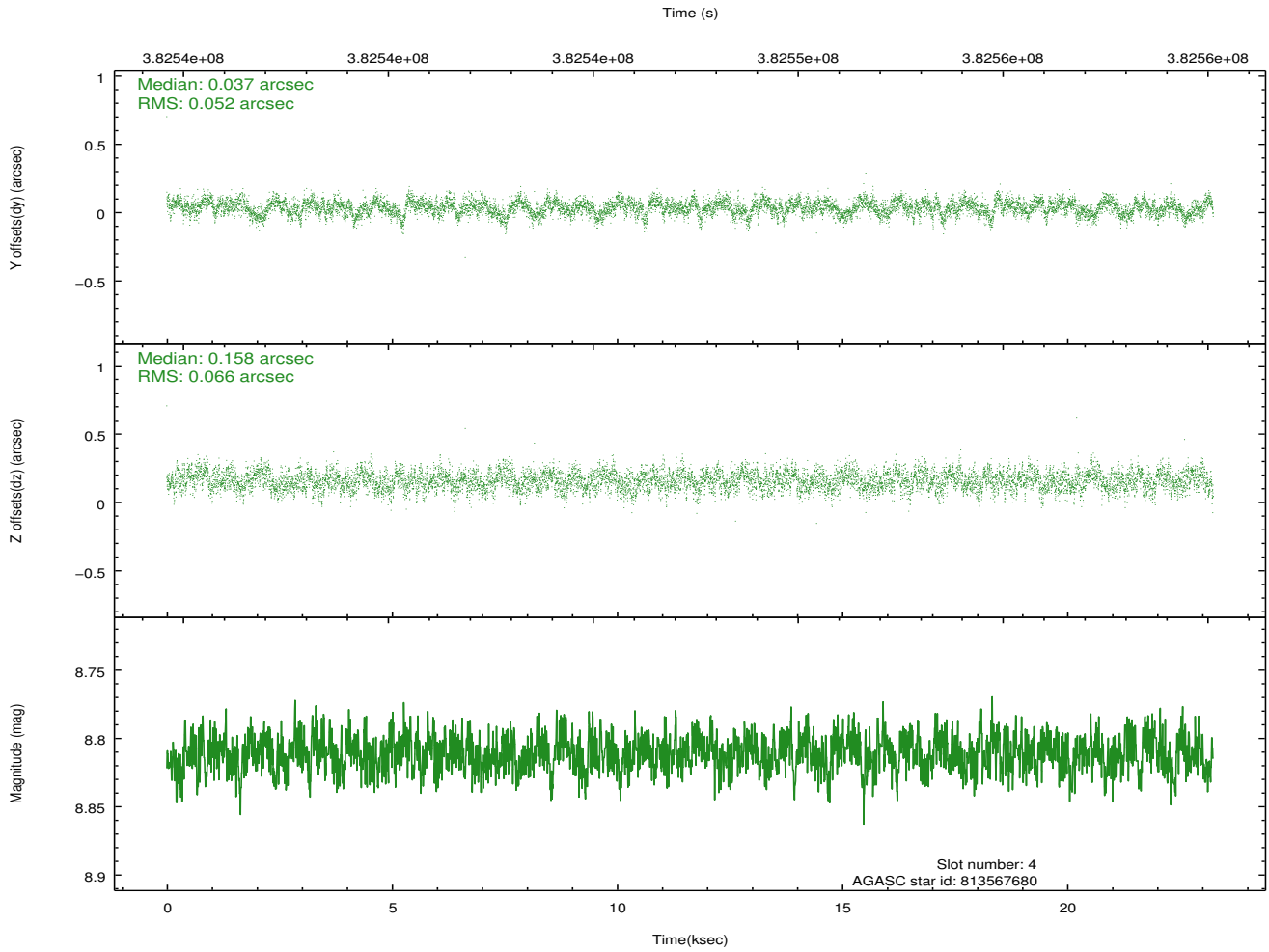
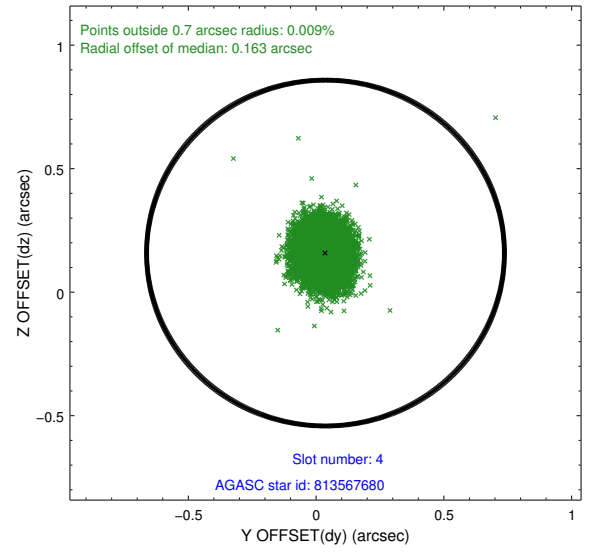
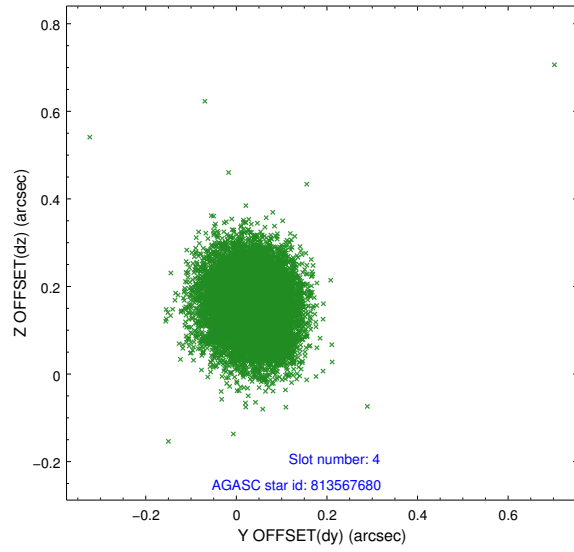
slot	status	id	mag	n_pts	med_dy	med_dz	dr1	dr2	ra	dec	mean_y	mean_z
0	FID	HRC-S-1	6.99	5669	0.042	-0.194	0.034	0.069	0.000000	0.000000	-1170.09	-462.72
1	FID	HRC-S-2	6.97	5670	0.262	-0.119	0.009	0.016	0.000000	0.000000	1229.61	-455.37
2	FID	HRC-S-3	7.01	5670	0.085	0.010	0.036	0.067	0.000000	0.000000	-1172.55	566.91
3	GUIDE	813564720	9.67	11313	-0.015	0.003	0.136	0.225	246.108315	-17.745256	832.04	-1479.59
4	GUIDE	813567680	8.81	11337	0.037	0.158	0.089	0.142	246.236695	-18.080822	-280.51	-2123.63
5	GUIDE	813570576	8.73	11333	-0.001	0.066	0.102	0.163	246.172363	-17.560865	1523.55	-1579.78
6	GUIDE	813434656	9.28	11313	-0.069	-0.567	0.130	0.206	245.007448	-17.494598	1047.27	2398.16
7	GUIDE	813566928	9.83	11307	0.056	0.337	0.181	0.305	246.367608	-17.856520	592.74	-2424.05

2.4 Star Slots

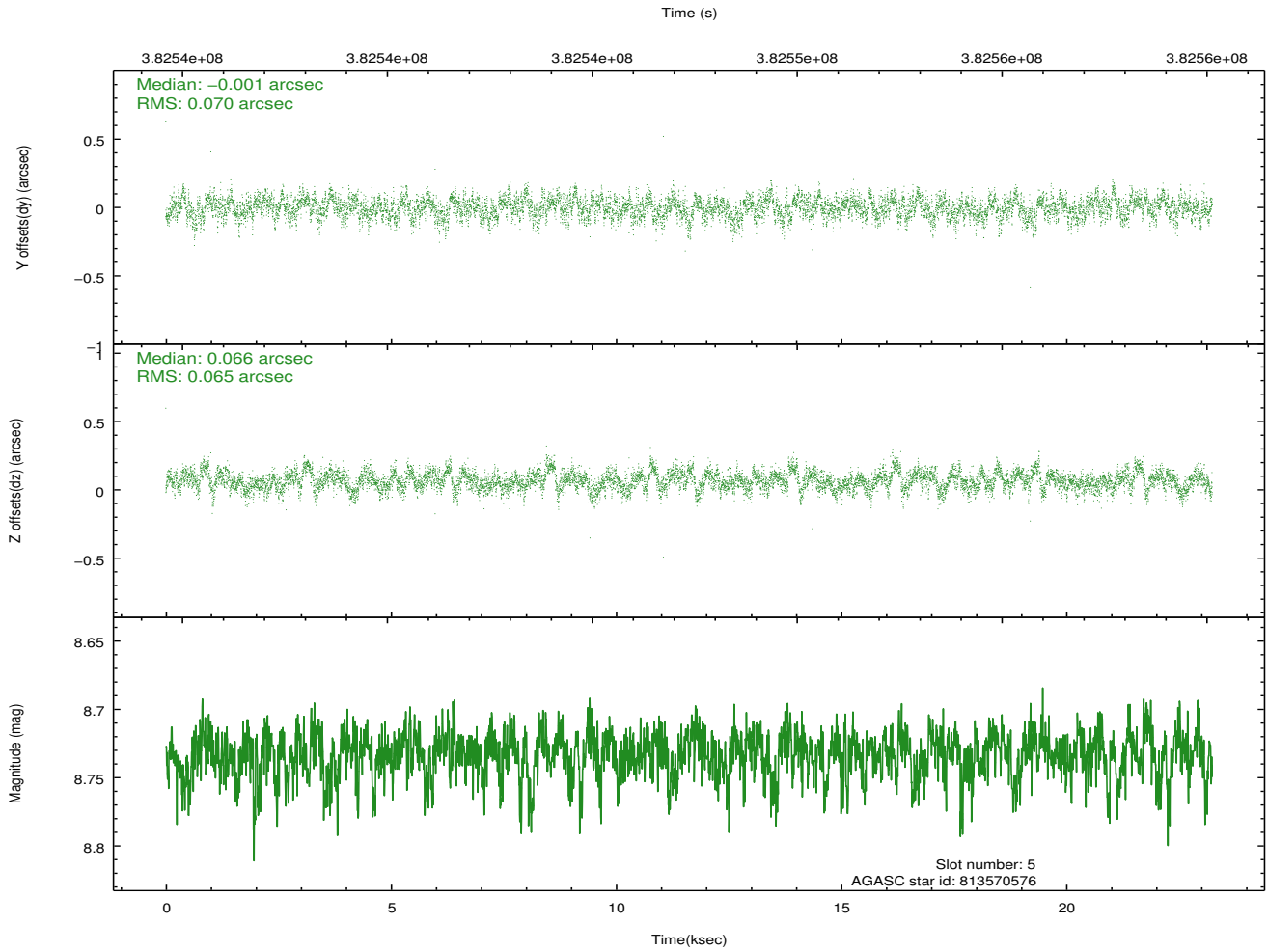
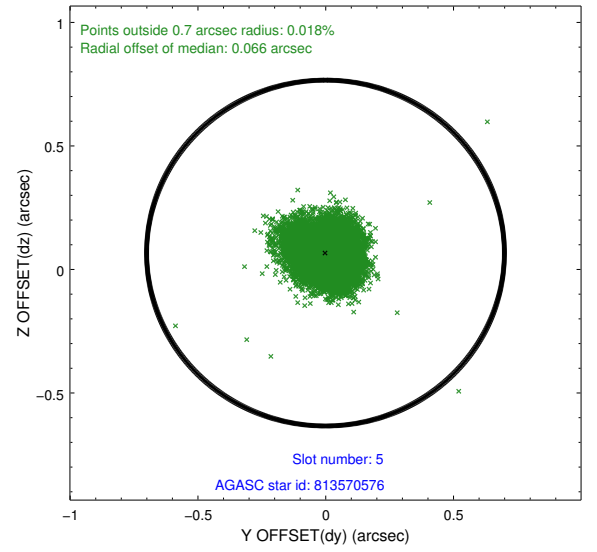
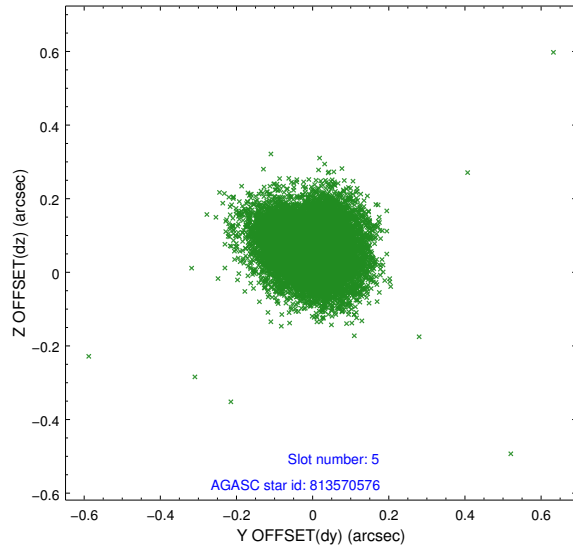
2.4.1 Slot 3



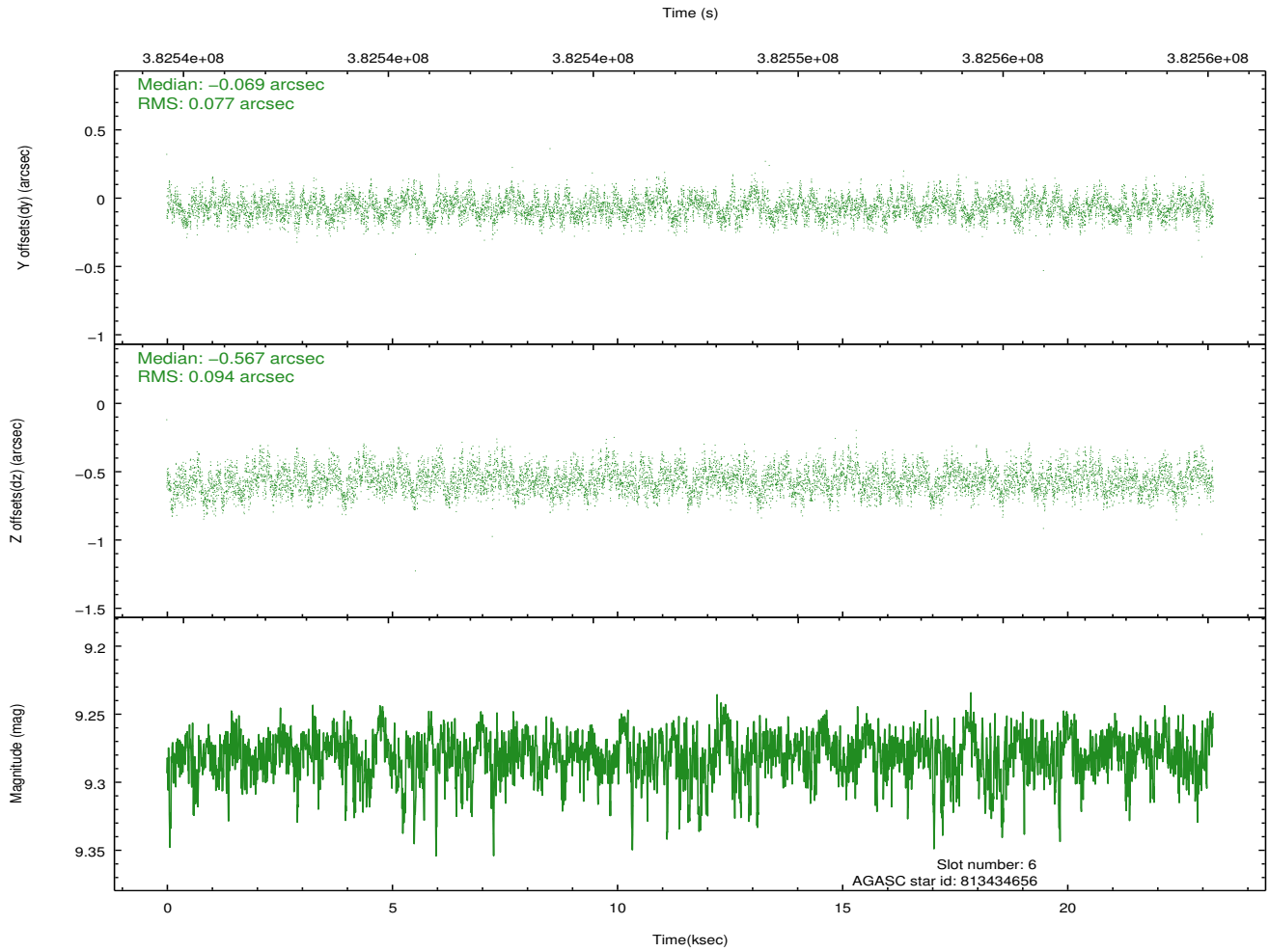
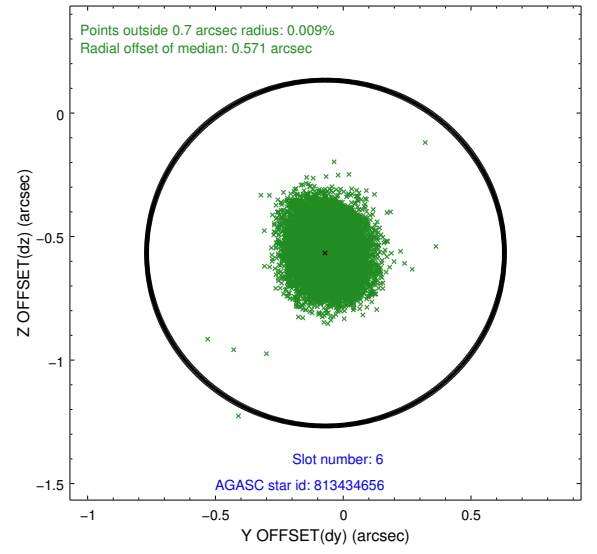
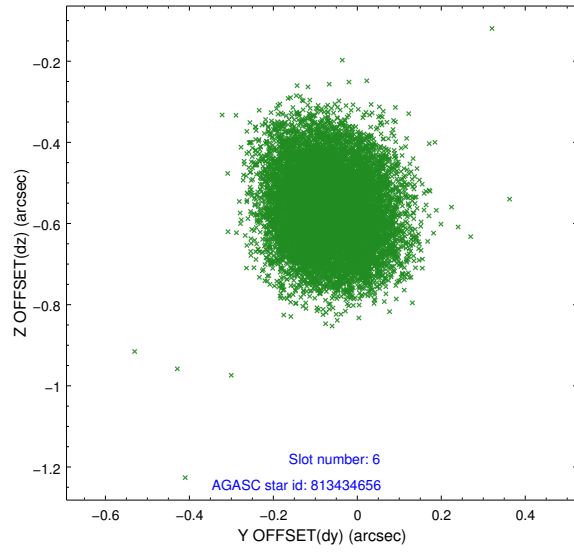
2.4.2 Slot 4



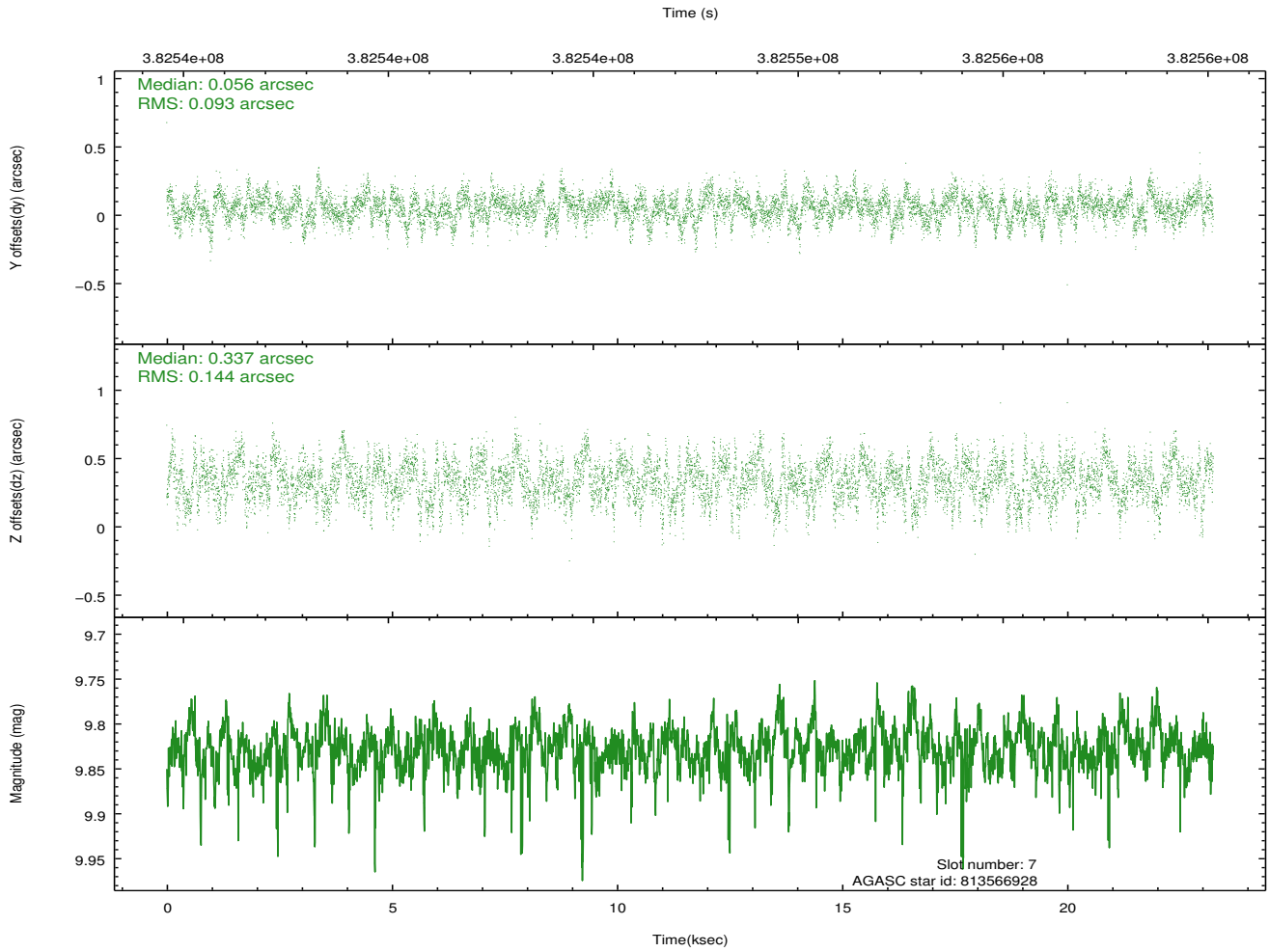
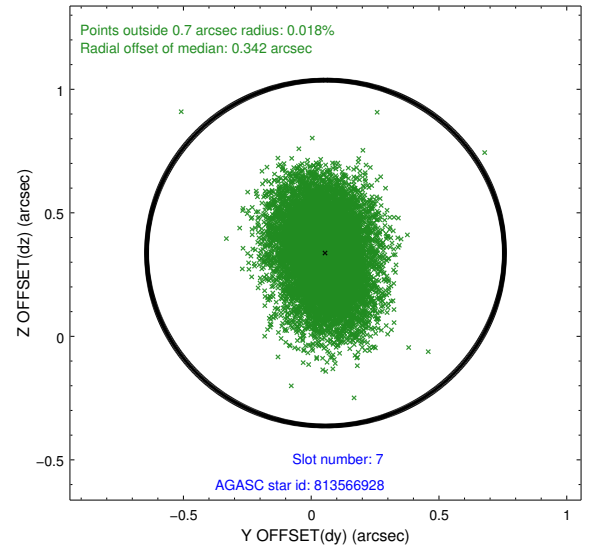
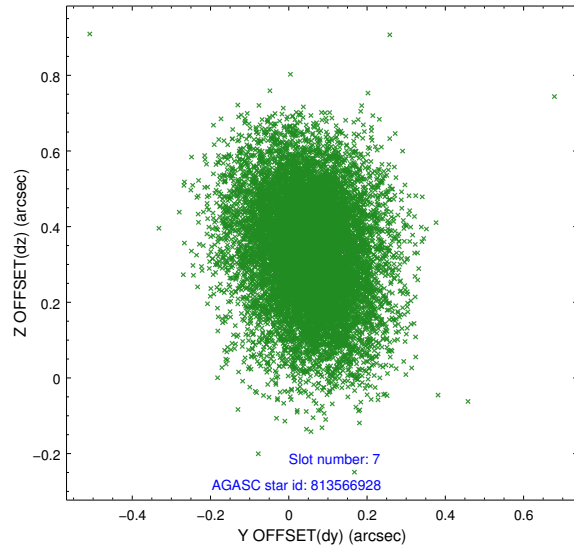
2.4.3 Slot 5



2.4.4 Slot 6

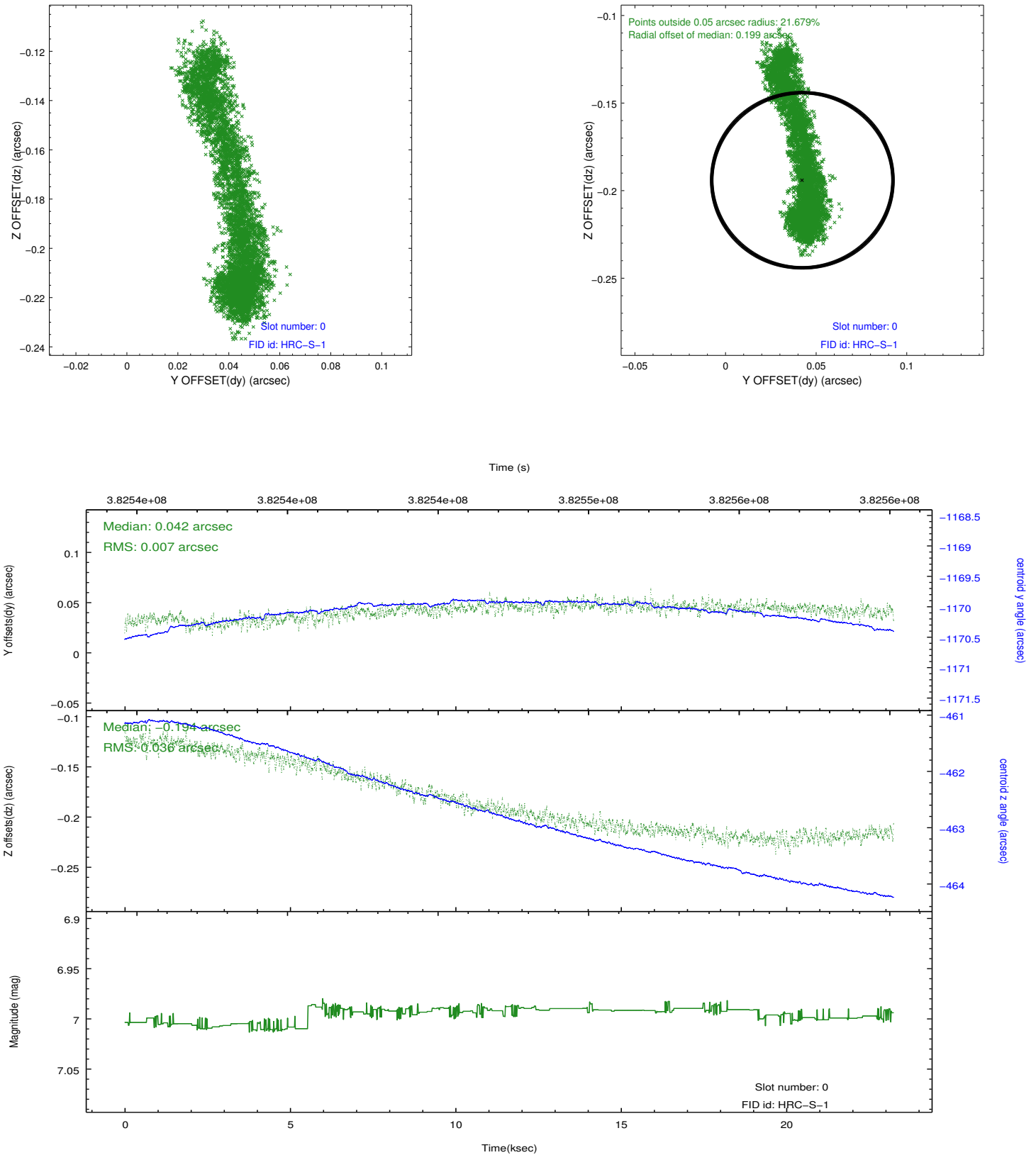


2.4.5 Slot 7

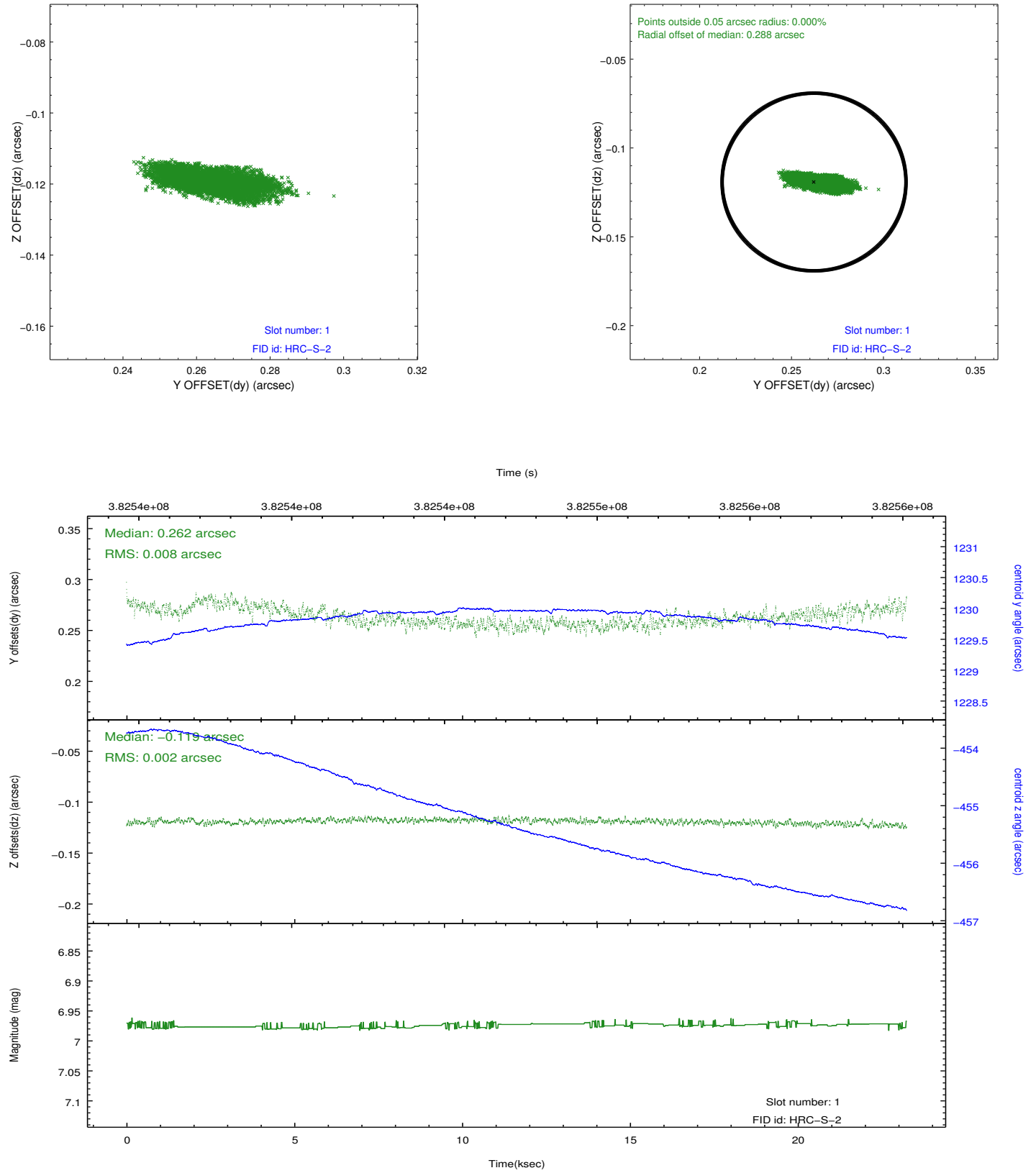


2.5 FID Slots

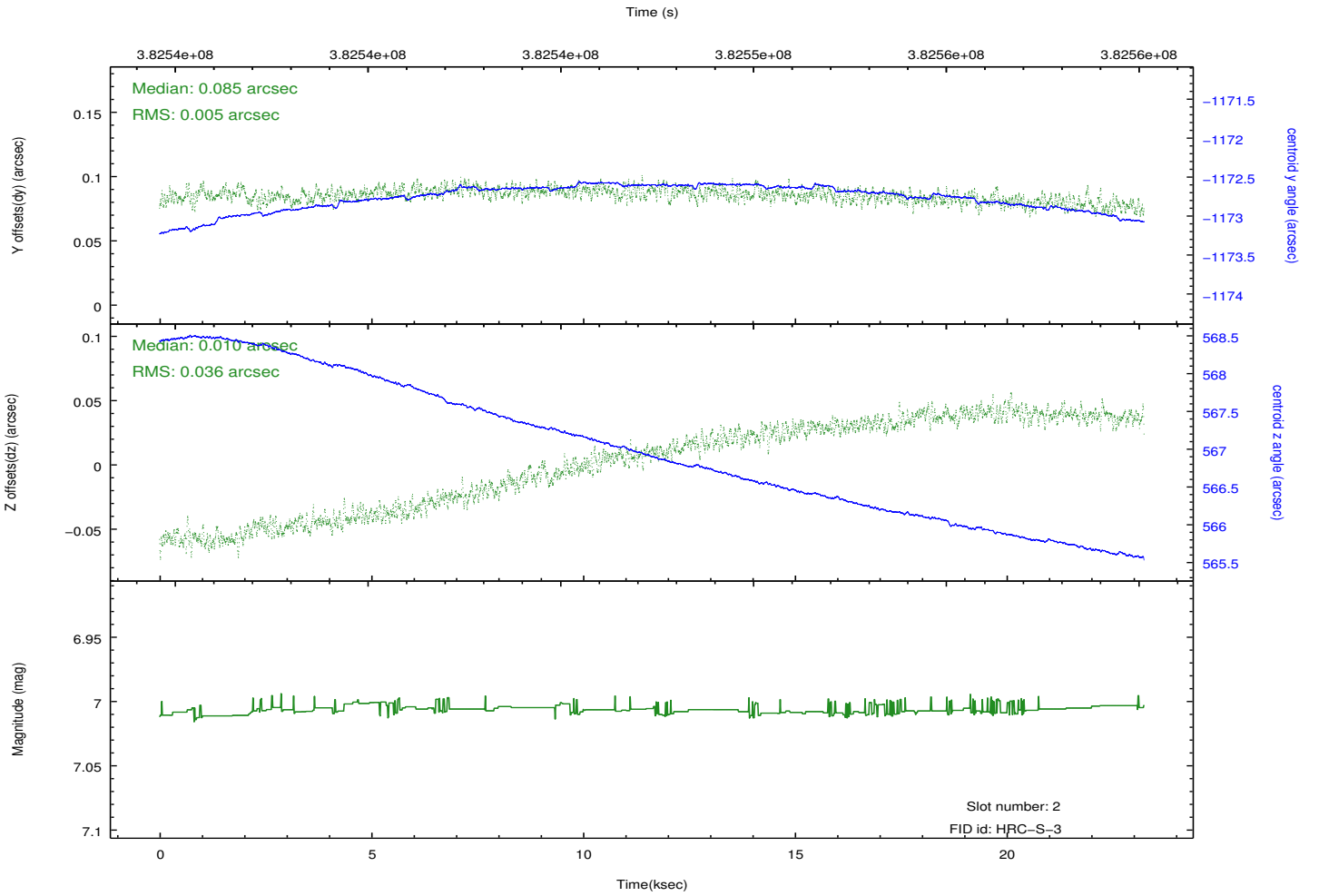
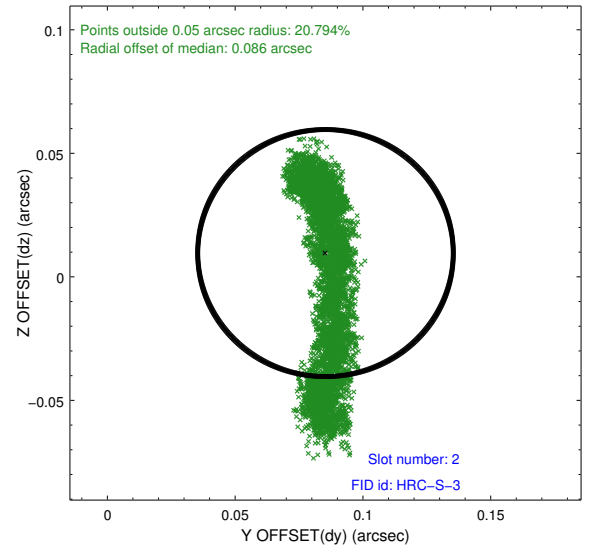
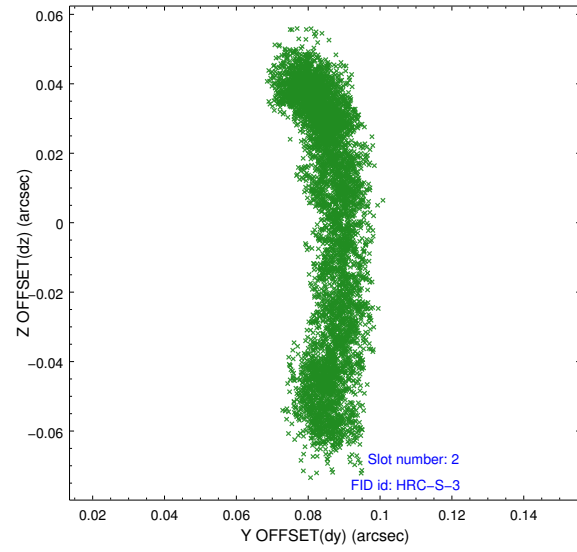
2.5.1 Slot 0



2.5.2 Slot 1

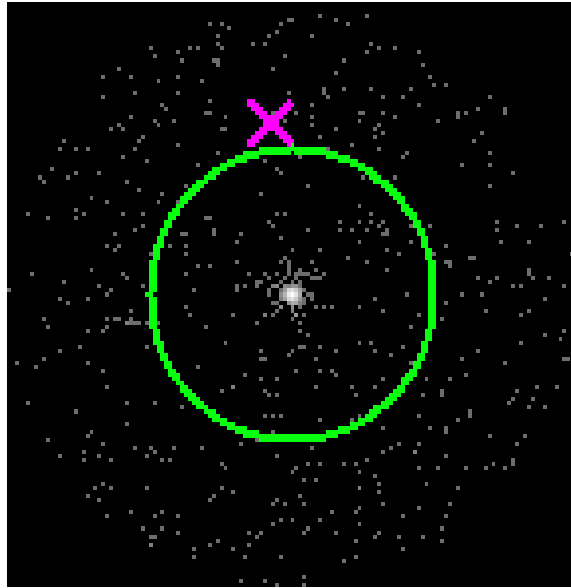


2.5.3 Slot 2

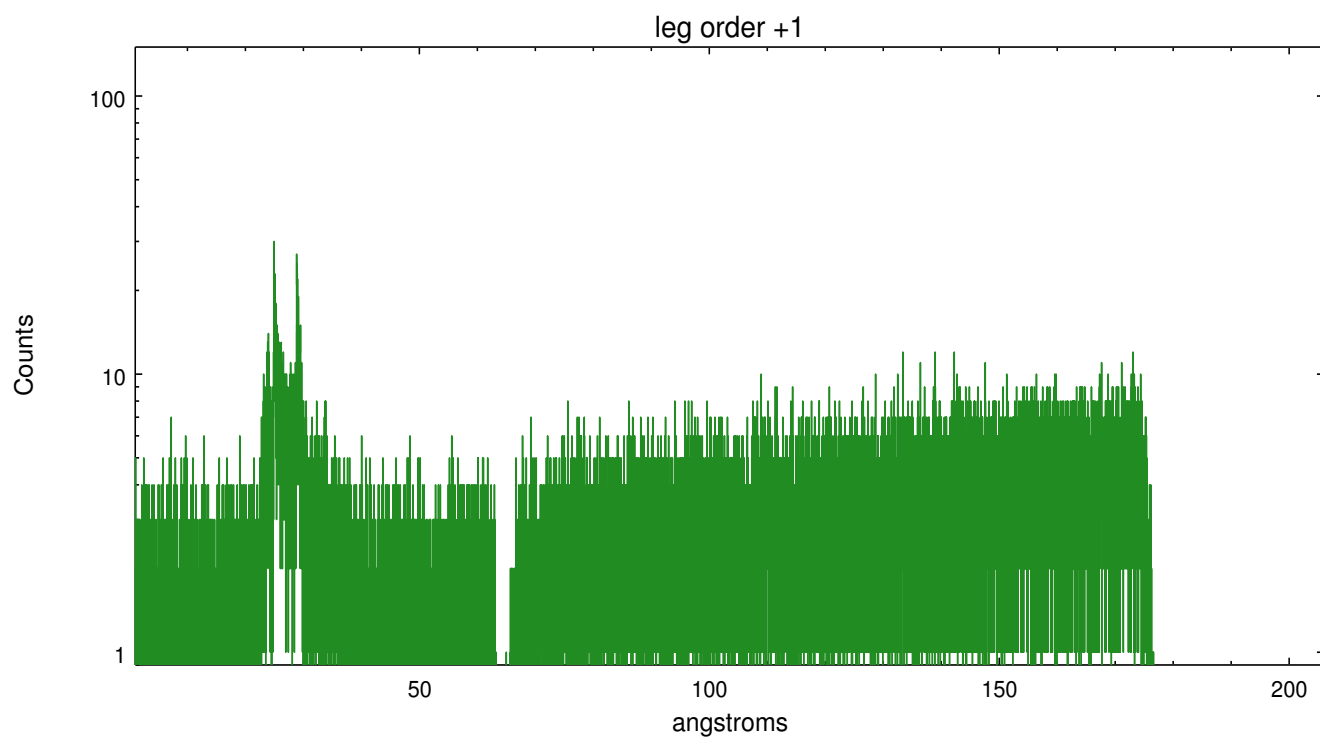
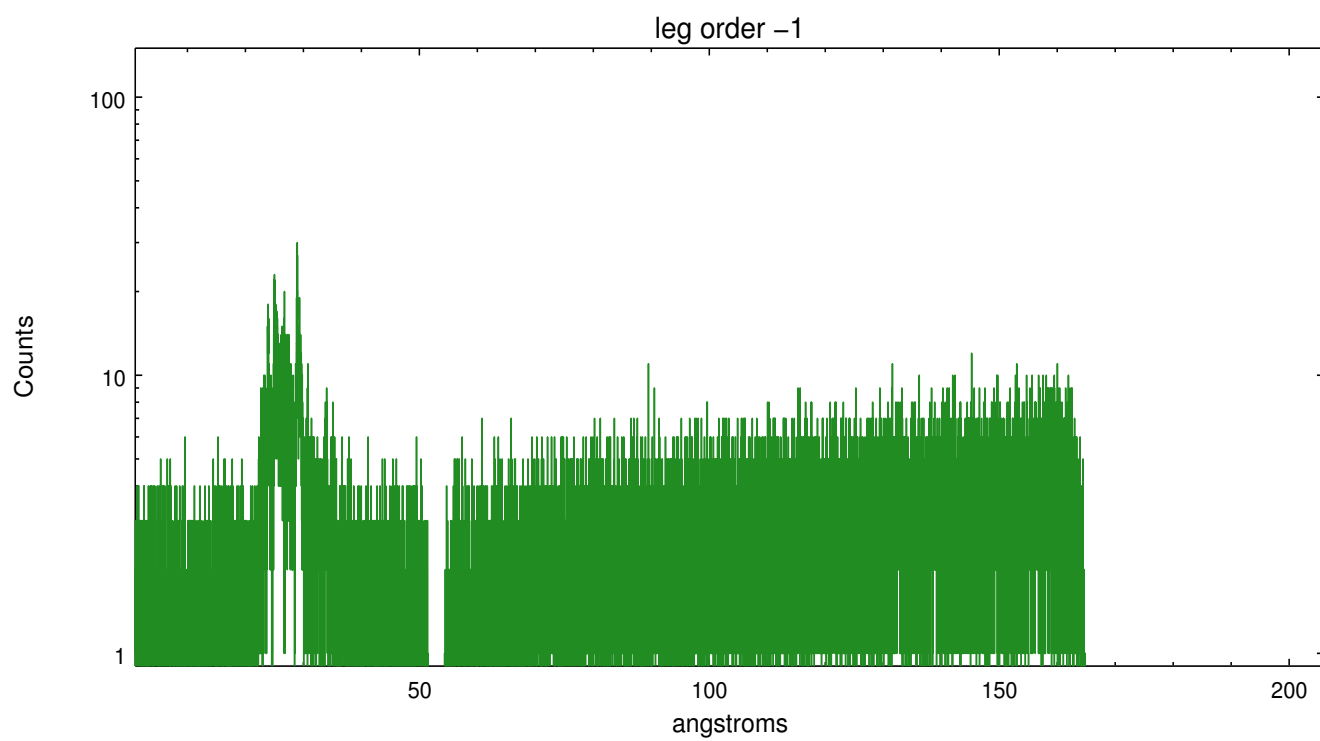


3 Gratings

3.1 LETG Arm



LETG Zero Order



A Summary

A.1 Status

V&V Scientist	Joy Nichols
V&V Date (YYYY-MM-DD)	2012.07.03
V&V Edition	1
V&V Disposition and Status	OK
V&V Charge Time	23.2441824

A.2 Comments

Radial offset of fid light 1 slightly exceeds our limits of .25 arcsec. This is due to a HRMA and periscope temperature gradient during the first part of the observation, expected for this observation.