

V&V Reference Report

L2 ASCDS Version : 8.4.5

Observation 11832 - L2 Version 2
Chandra X-Ray Center

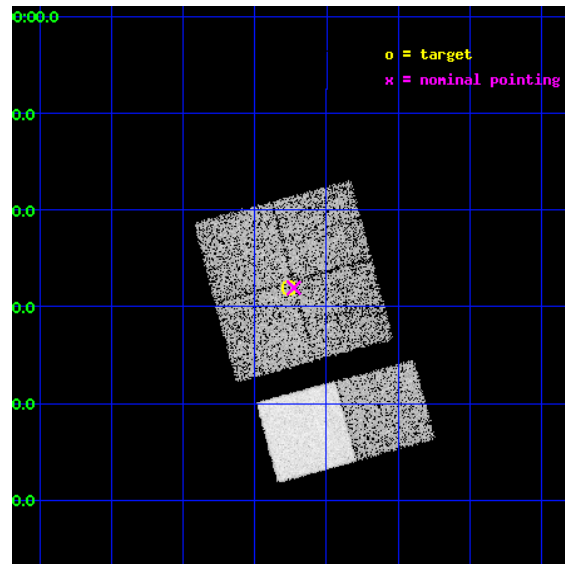
L2 Processing Date : Jun 29 2012

Contents

1	Front	2
2	OBI	3
2.1	OBI	3
2.1.1	Images	3
2.1.2	Bias	3
2.1.3	Parameters	4
2.1.4	Events	4
2.2	Compared Parameters	5
2.3	Aspect	6
2.4	Star Slots	9
2.4.1	Slot 3	9
2.4.2	Slot 4	10
2.4.3	Slot 5	11
2.4.4	Slot 6	12
2.4.5	Slot 7	13
2.5	FID Slots	14
2.5.1	Slot 0	14
2.5.2	Slot 1	15
2.5.3	Slot 2	16
A	Summary	17
A.1	Status	17
A.2	Comments	17

1 Front

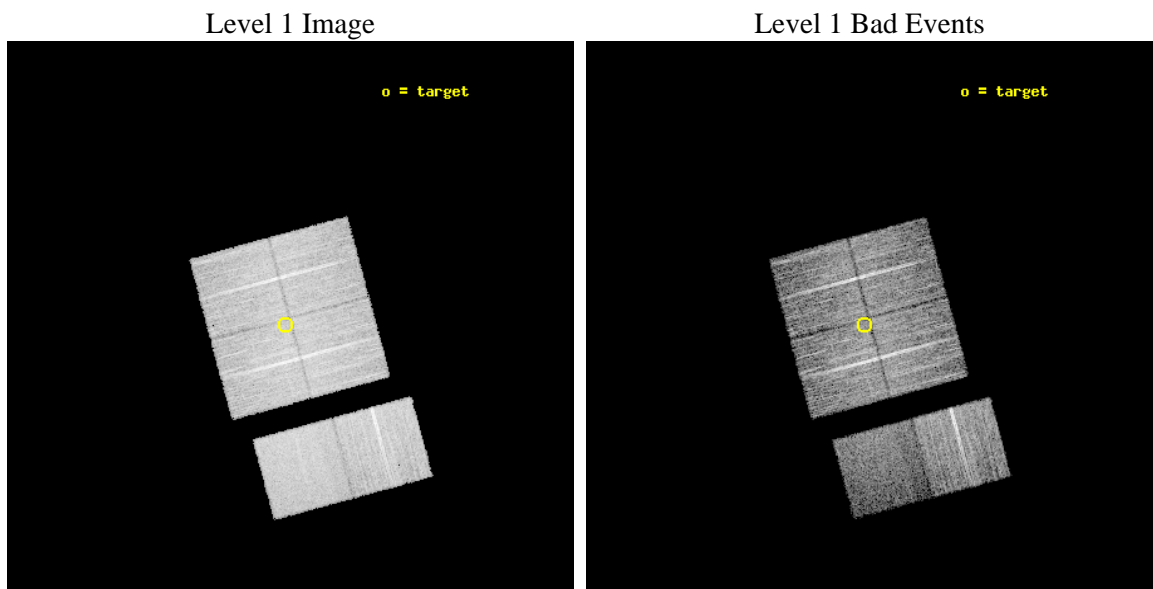
seq_num	501349	Sequence number
obs_id	11832	Observation id
title	Snap-shot survey of unidentified galactic GeV sources	Proposal tit
observer	Professor Gordon Garmire	Principal investigator
object	0FGL J1844.1-0335	Source name
dtcycle	0	
cycle	P	events from which exps? Prim/Second/Both
ra_targ	281.065075	Observer's specified target RA [deg]
dec_targ	-3.467125	Observer's specified target Dec [deg]
ra_nom	281.05700627383	Nominal RA [deg]
dec_nom	-3.4674428497344	Nominal Dec [deg]
roll_nom	164.82230125325	Nominal Roll [deg]
revision	2	Processing version of data
ontime	10051.199962616	Sum of GTIs [s]
livetime	9923.9256165833	Livetime [s]
ontime0	10051.199962616	Sum of GTIs [s]
ontime1	10051.199962616	Sum of GTIs [s]
ontime2	10051.199962616	Sum of GTIs [s]
ontime3	10051.199962616	Sum of GTIs [s]
ontime6	10051.199962616	Sum of GTIs [s]
ontime7	10051.199962616	Sum of GTIs [s]
l2events	68483	Number of level 2 events



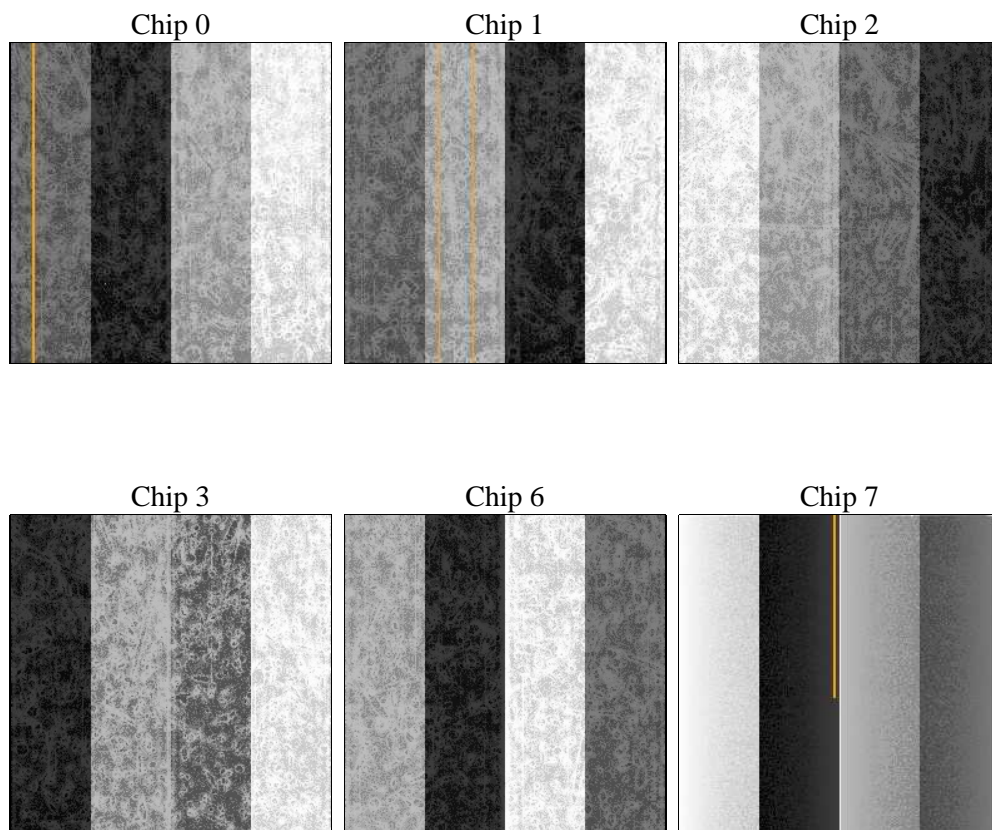
2 OBI

2.1 OBI

2.1.1 Images



2.1.2 Bias



2.1.3 Parameters

obi_num	0	Obi number	sched_exp_time	10000.000000	[s] Scheduled observation exposure time
ascdsver	8.4.5	Processing system revision	ontime	10051.199962616	Sum of GTIs [s]
caldsver	4.5.0	 	ontime0	10051.199962616	Sum of GTIs [s]
date	2012-06-29T09:23:46	Date and time of file creation	ontime1	10051.199962616	Sum of GTIs [s]
revision	2	Processing version of data	ontime2	10051.199962616	Sum of GTIs [s]
			ontime3	10051.199962616	Sum of GTIs [s]
			ontime6	10051.199962616	Sum of GTIs [s]
			ontime7	10051.199962616	Sum of GTIs [s]
			l1events	416654	Number of level 1 events

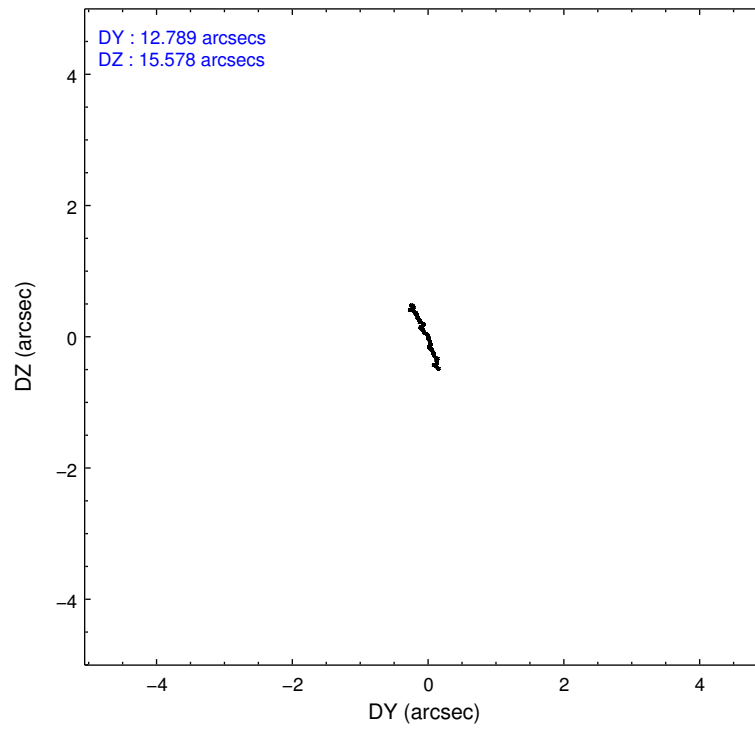
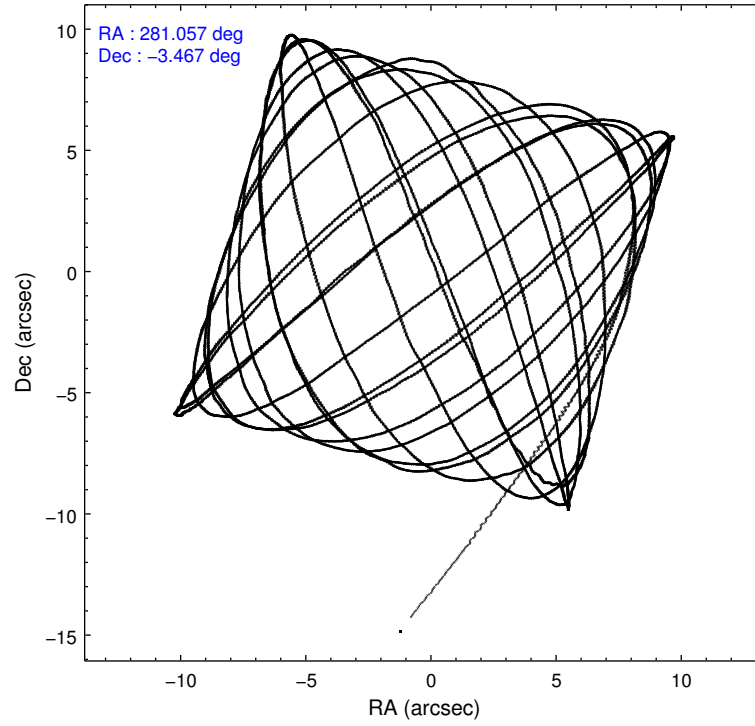
2.1.4 Events

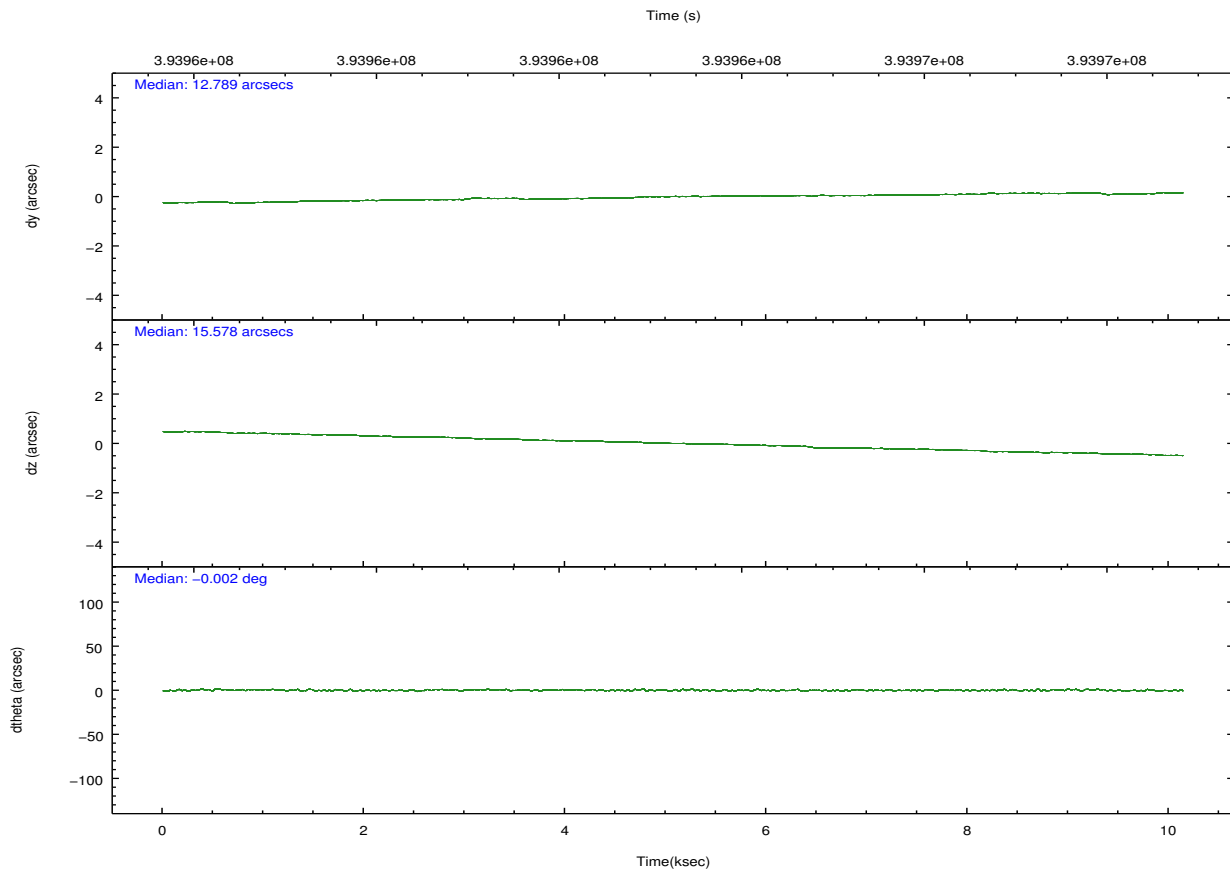
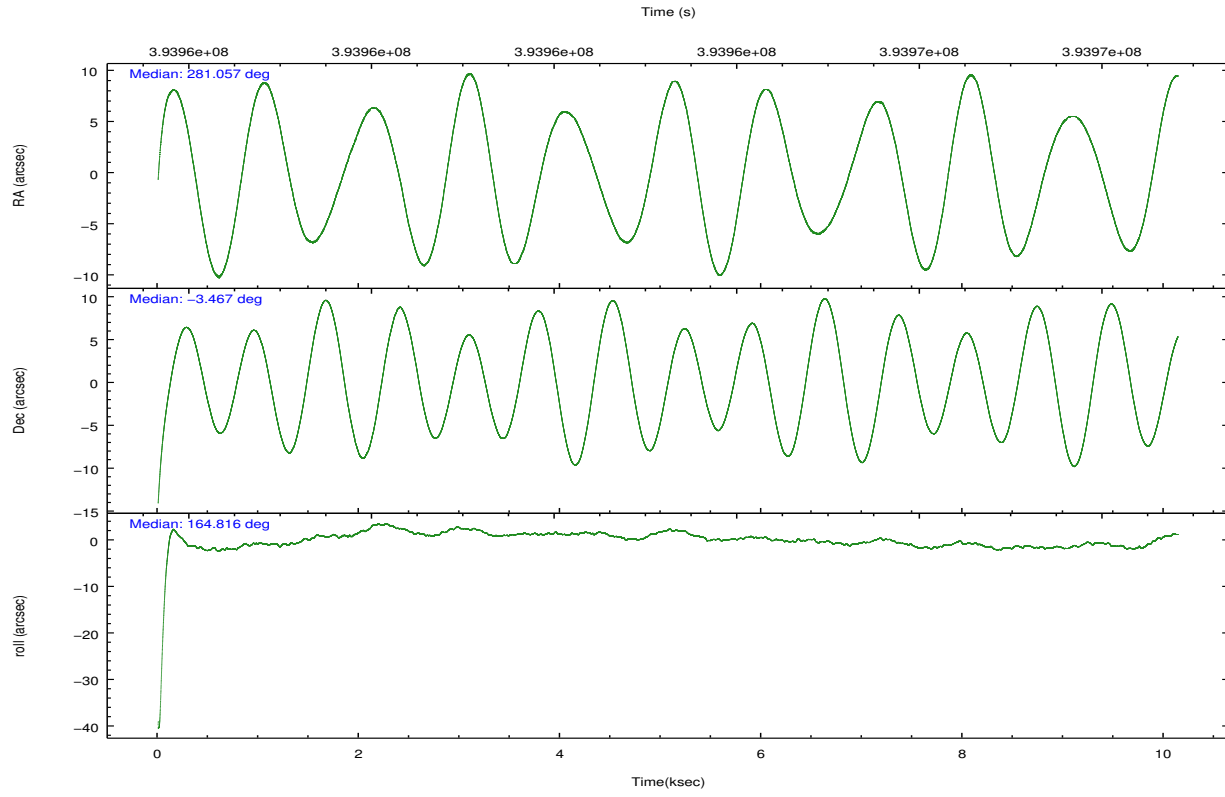
	ccd 0	ccd 1	ccd 2	ccd 3	ccd 6	ccd 7		ccd 0	ccd 1	ccd 2	ccd 3	ccd 6	ccd 7
level 1 events	64559	64095	72096	70993	72358	72553	grade 0 events	3066	3198	3118	3059	3277	3652
rejected events	56640	55767	64299	63308	63910	36540		4%	4%	4%	4%	4%	5%
rejected %	87%	87%	89%	89%	88%	50%	grade 1 events	46	42	53	36	52	111
								0%	0%	0%	0%	0%	0%
							grade 2 events	1885	1858	1871	1709	1907	7755
								2%	2%	2%	2%	2%	10%
							grade 3 events	834	850	782	790	864	3294
								1%	1%	1%	1%	1%	4%
							grade 4 events	776	875	764	772	810	3282
								1%	1%	1%	1%	1%	4%
							grade 5 events	2200	2695	2131	2630	2731	7629
								3%	4%	2%	3%	3%	10%
							grade 6 events	1361	1552	1266	1358	1594	18036
								2%	2%	1%	1%	2%	24%
							grade 7 events	54391	53025	62111	60639	61123	28794
								84%	82%	86%	85%	84%	39%

2.2 Compared Parameters

Parameter	Planned	Actual	Parameter	Planned	Actual
Instrument	ACIS	ACIS	Obspar format version number	7	7
Detector	ACIS-012367	ACIS-012367	Obspar file type	PREDICTED	ACTUAL
Grating	NONE	NONE	Obspar update status	NONE	UPDATED
Data mode	VFAINT	VFAINT	CCD I0 on	Y	Y
Observation mode	POINTING	POINTING	CCD I1 on	Y	Y
[deg] Pointing RA	281.083584	281.0570062738314	CCD I2 on	Y	Y
[deg] Pointing Dec	-3.460283	-3.467442849734383	CCD I3 on	Y	Y
[deg] Pointing Roll	164.615277	164.8223012532454	CCD S0 on	N	N
[mm] SIM focus pos	-0.782348	-0.7809083437167272	CCD S1 on	N	N
[mm] SIM defocus	0	0.001439871863259334	CCD S2 on	O2	Y
[mm] SIM translation stage pos	-233.592463	-233.5874344608287	CCD S3 on	O1	Y
[mm] SIM translation stage offset	0	-0.005018542100998502	CCD S4 on	N	N
[s] Observation start time (MET)	393958325.184000	393957133.31207	CCD S5 on	N	N
Observation start date	2010-06-26T16:50:59	2010-06-26T16:32:13	Number of optional ACIS chips dropped	0	0
[s] Observation end time (MET)	393968325.184000	393969089.42518	On-chip summing requested	N	N
Observation end date	2010-06-26T19:37:39	2010-06-26T19:51:29	Subarray requested	NONE	NONE
Read mode	TIMED	TIMED	Alternating exposures requested	N	N
			[s] Primary exposure time	0.000000	3.2

2.3 Aspect



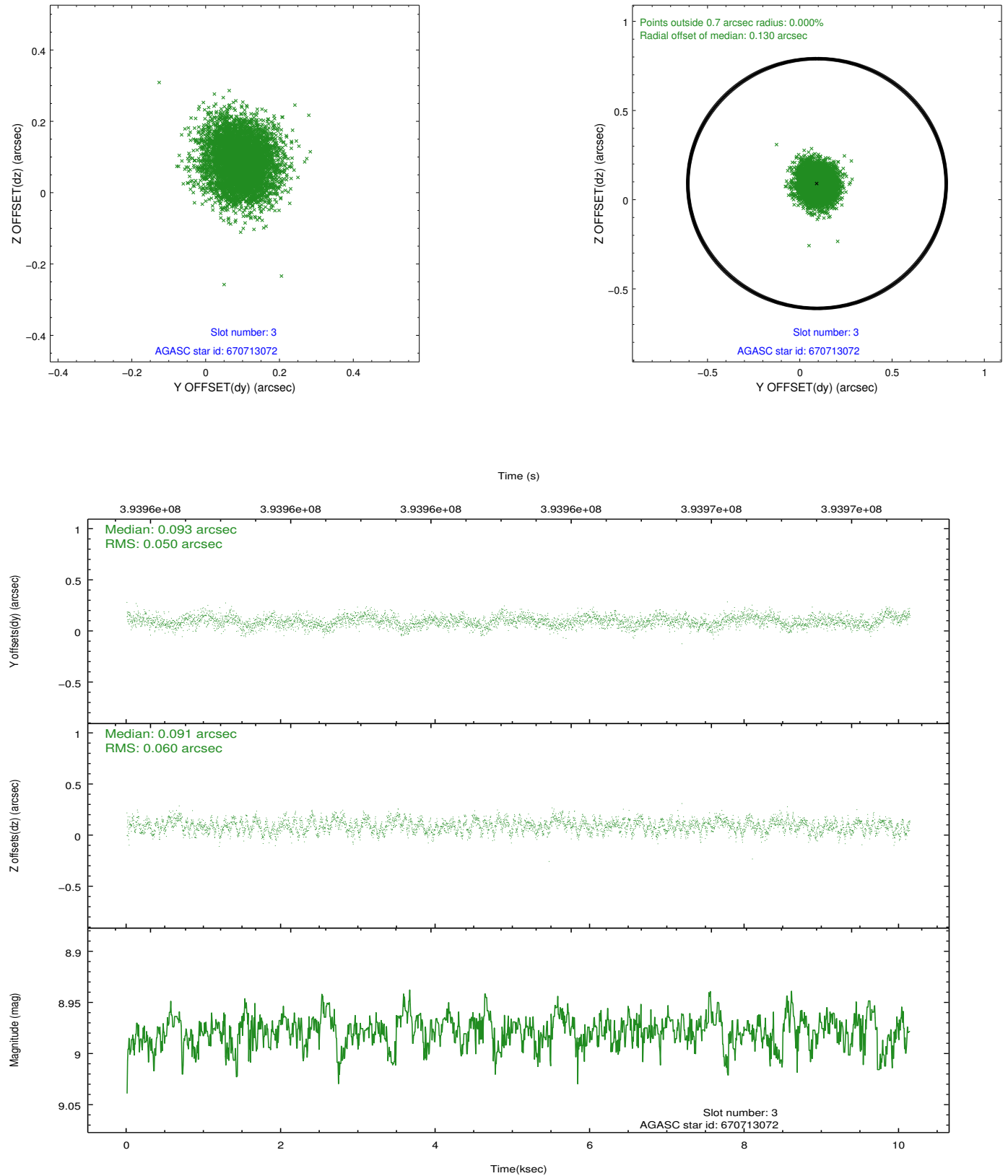


Slot Statistics

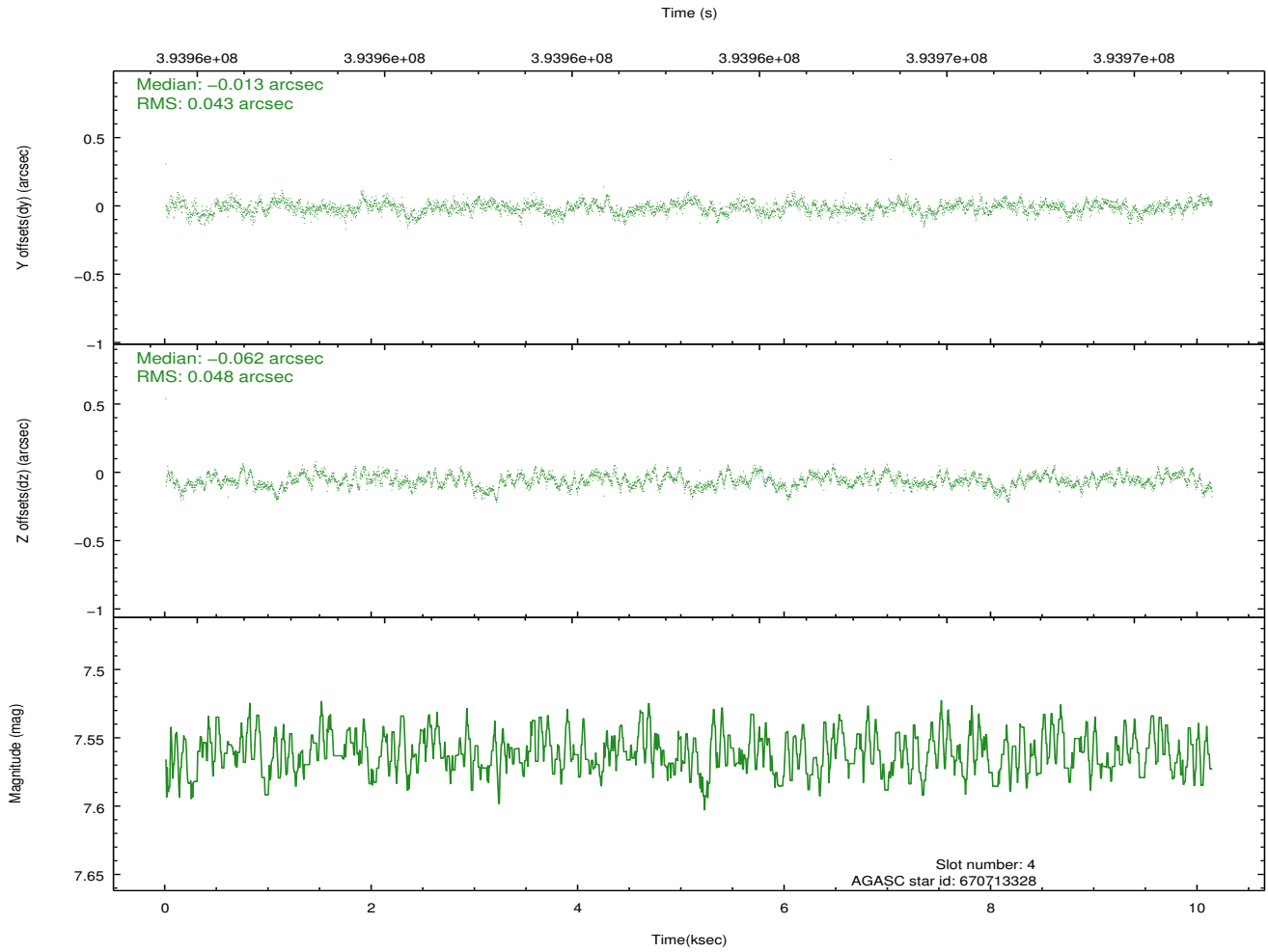
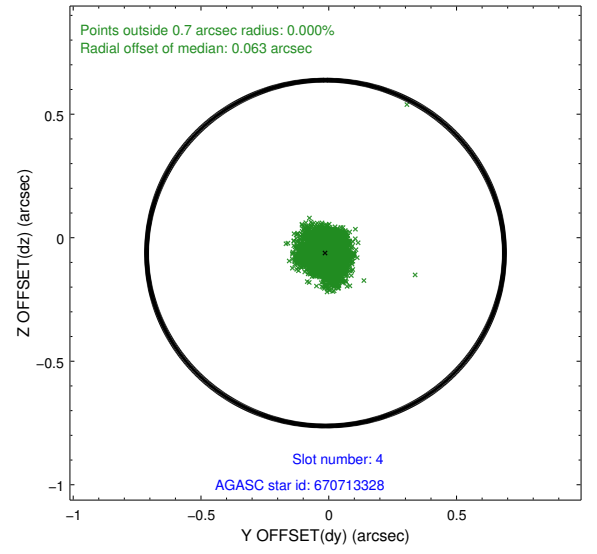
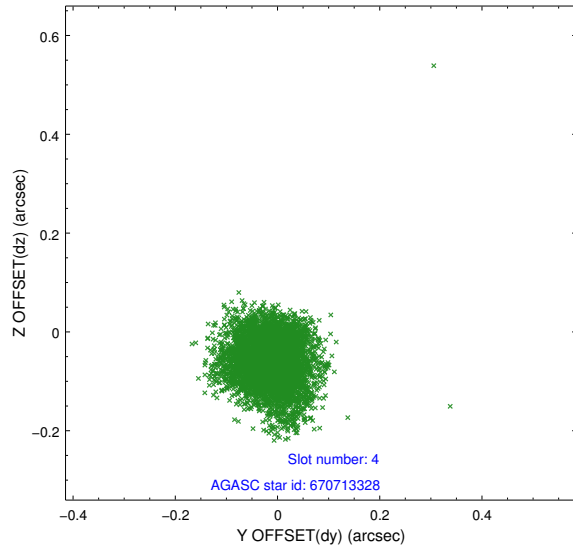
slot	status	id	mag	n_pts	med_dy	med_dz	dr1	dr2	ra	dec	mean_y	mean_z
0	FID	ACIS-I-4	6.93	2472	0.161	0.028	0.011	0.021	0.000000	0.000000	2146.88	1060.72
1	FID	ACIS-I-5	7.01	2473	-0.264	0.021	0.012	0.021	0.000000	0.000000	-1820.83	1058.81
2	FID	ACIS-I-6	7.00	2473	0.003	0.018	0.016	0.027	0.000000	0.000000	391.73	1703.14
3	GUIDE	670713072	8.98	4938	0.093	0.091	0.085	0.132	281.205407	-3.604132	-559.01	383.51
4	GUIDE	670713328	7.56	4945	-0.013	-0.062	0.067	0.109	280.824681	-3.187771	1157.96	-698.75
5	GUIDE	670714008	9.03	4944	-0.084	-0.031	0.088	0.144	281.129237	-3.153193	135.68	-1109.33
6	GUIDE	670830264	8.75	4946	0.098	0.012	0.075	0.121	281.361536	-3.231556	-744.25	-1058.84
7	GUIDE	671224168	7.34	4943	-0.095	-0.008	0.060	0.095	280.307659	-3.817213	2346.03	1979.85

2.4 Star Slots

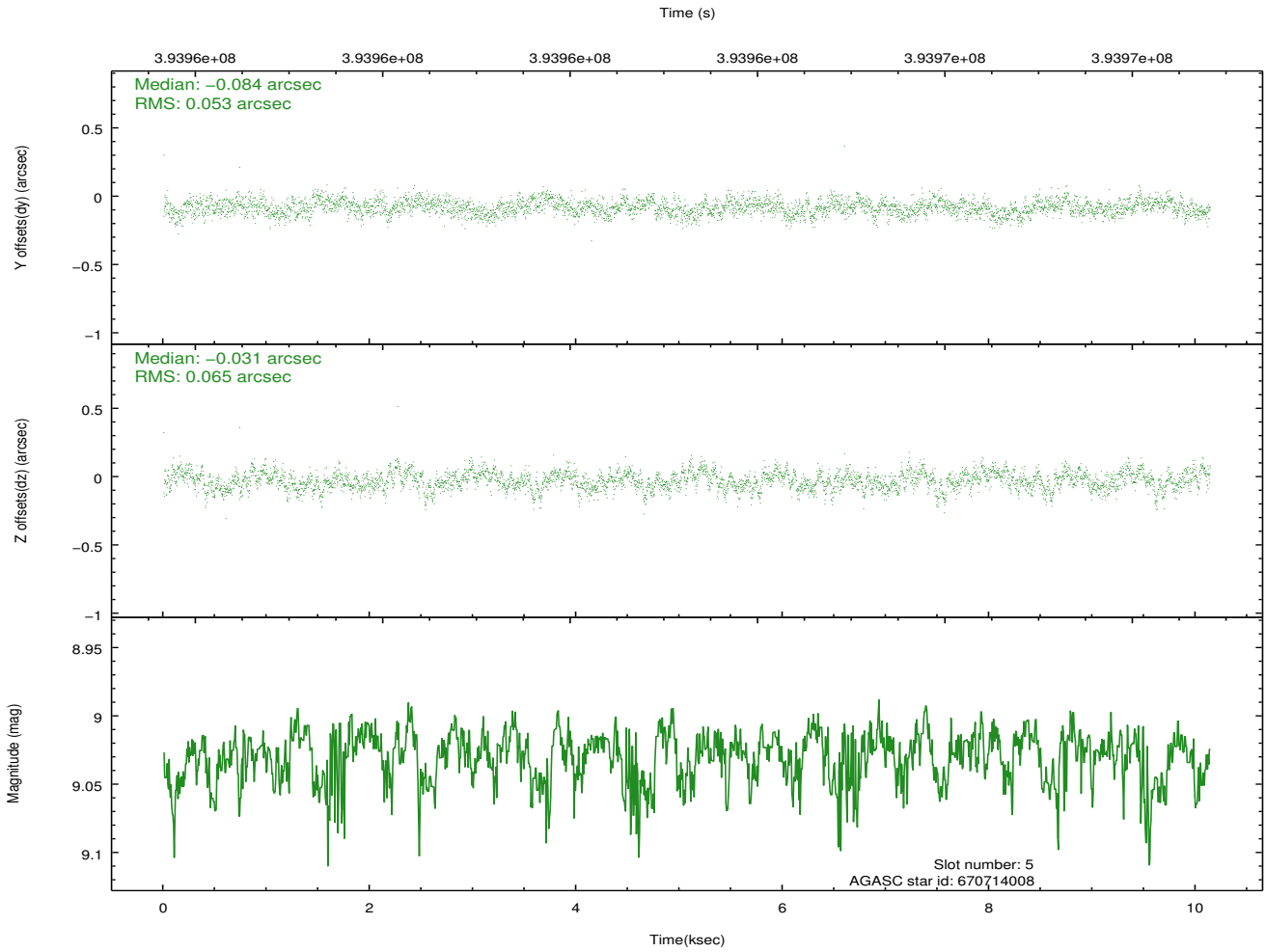
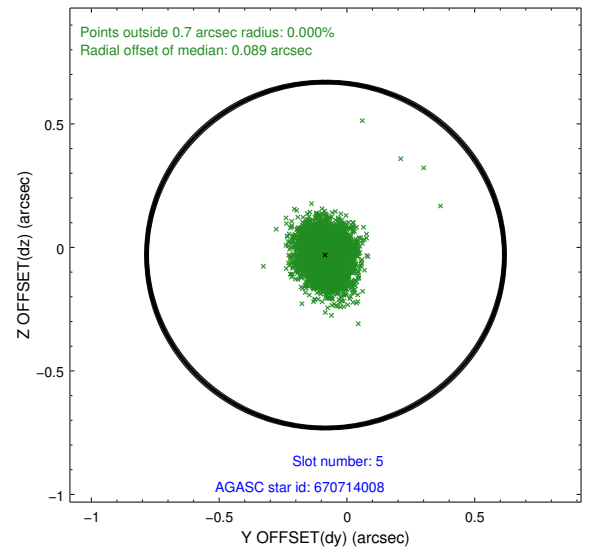
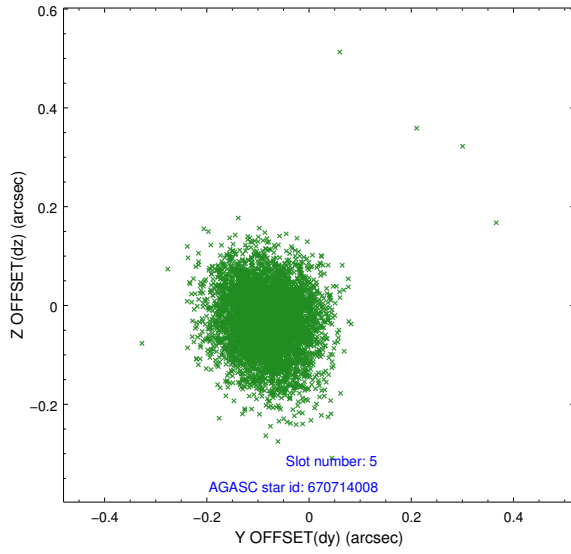
2.4.1 Slot 3



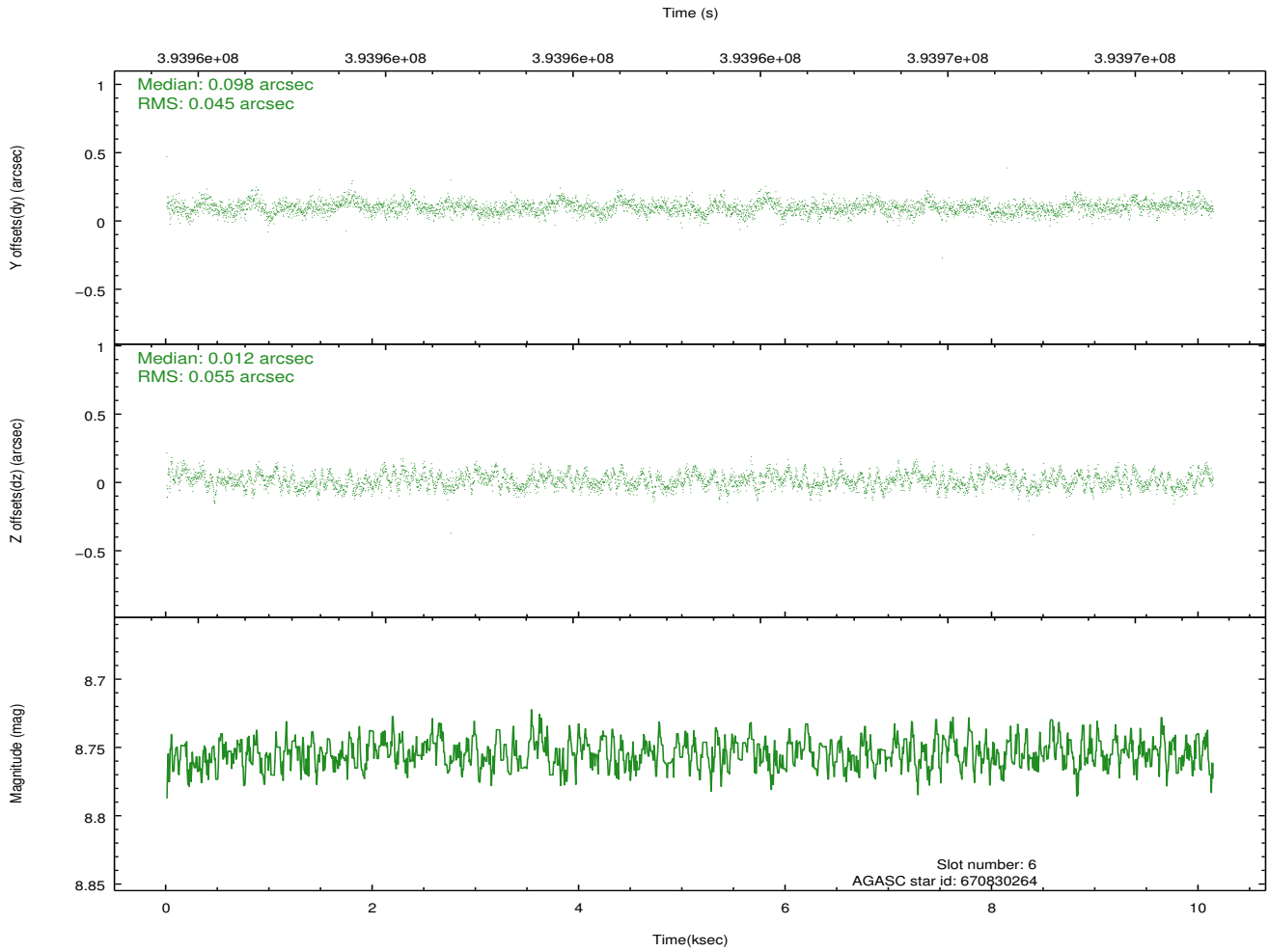
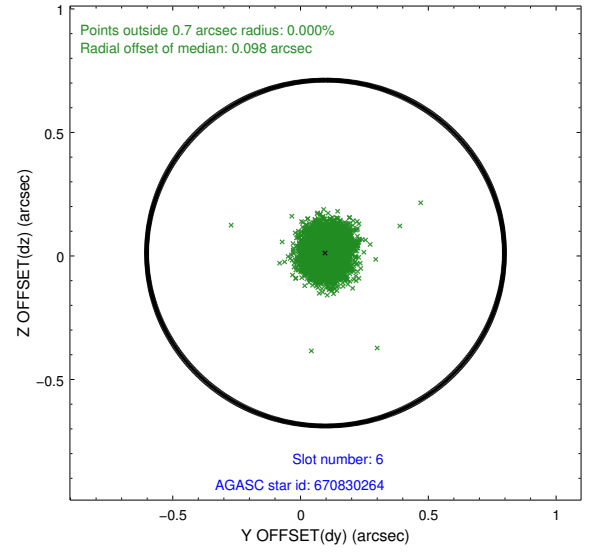
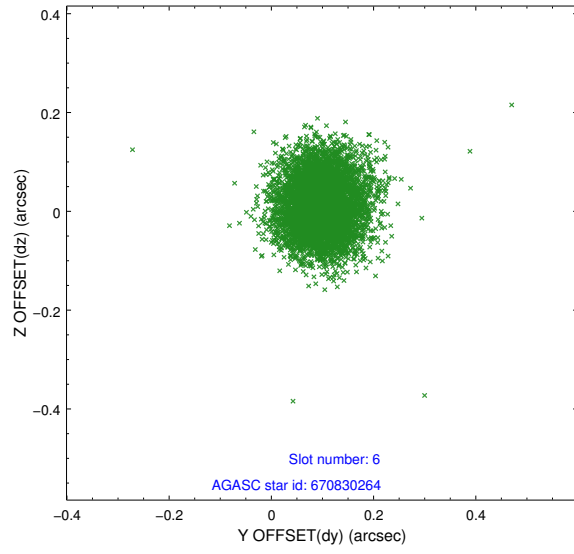
2.4.2 Slot 4



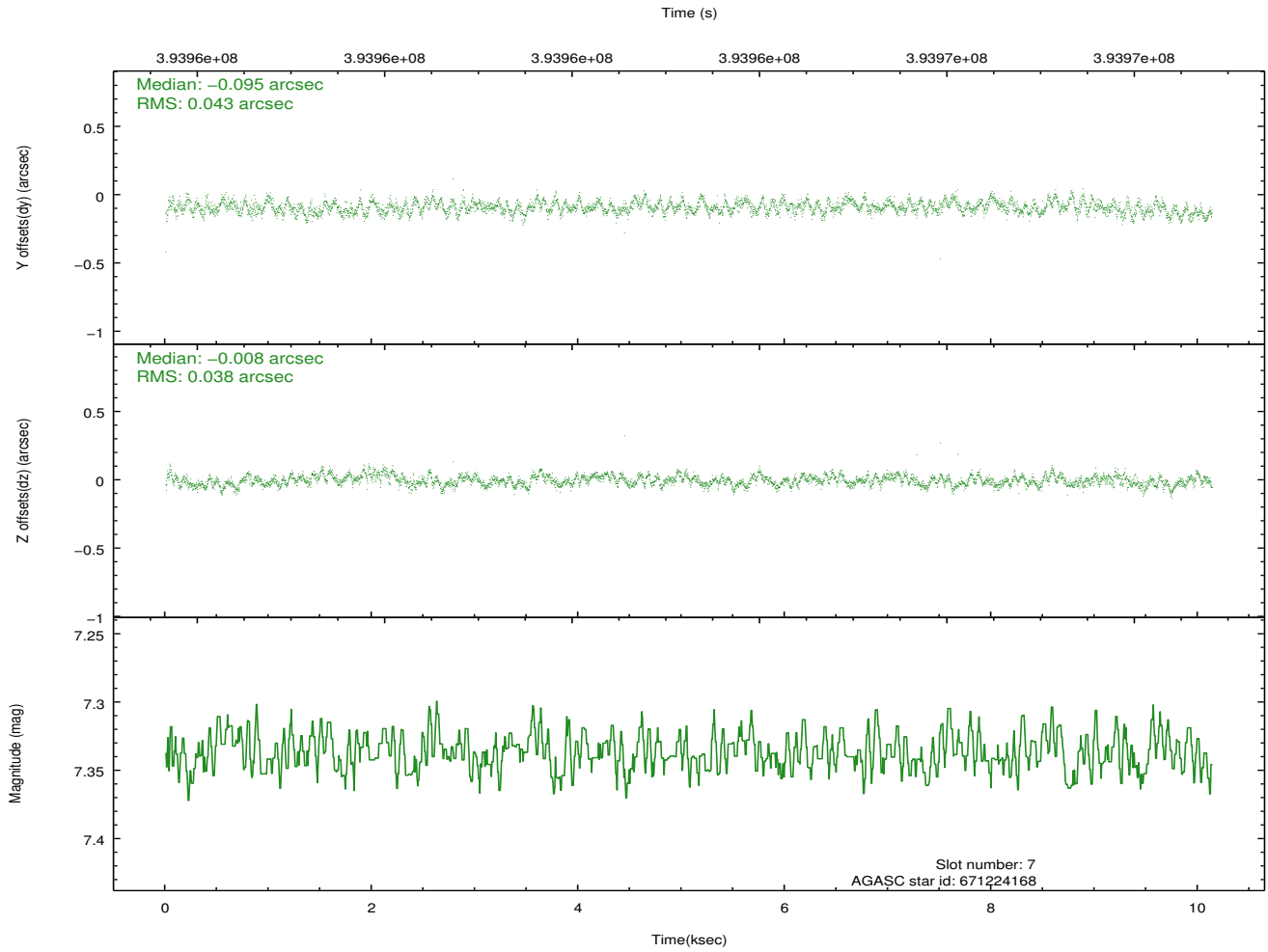
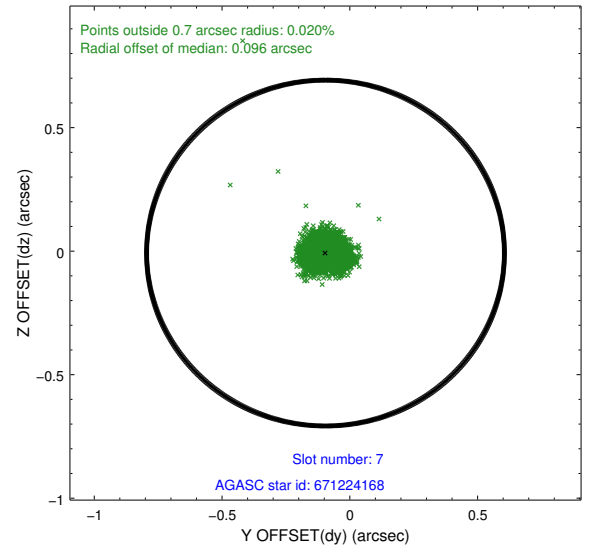
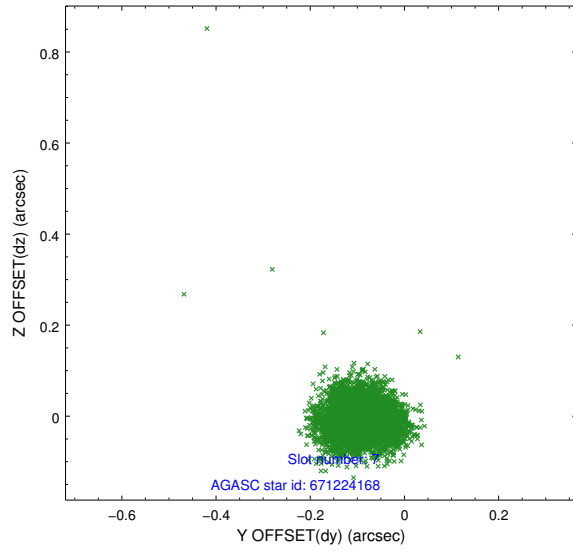
2.4.3 Slot 5



2.4.4 Slot 6

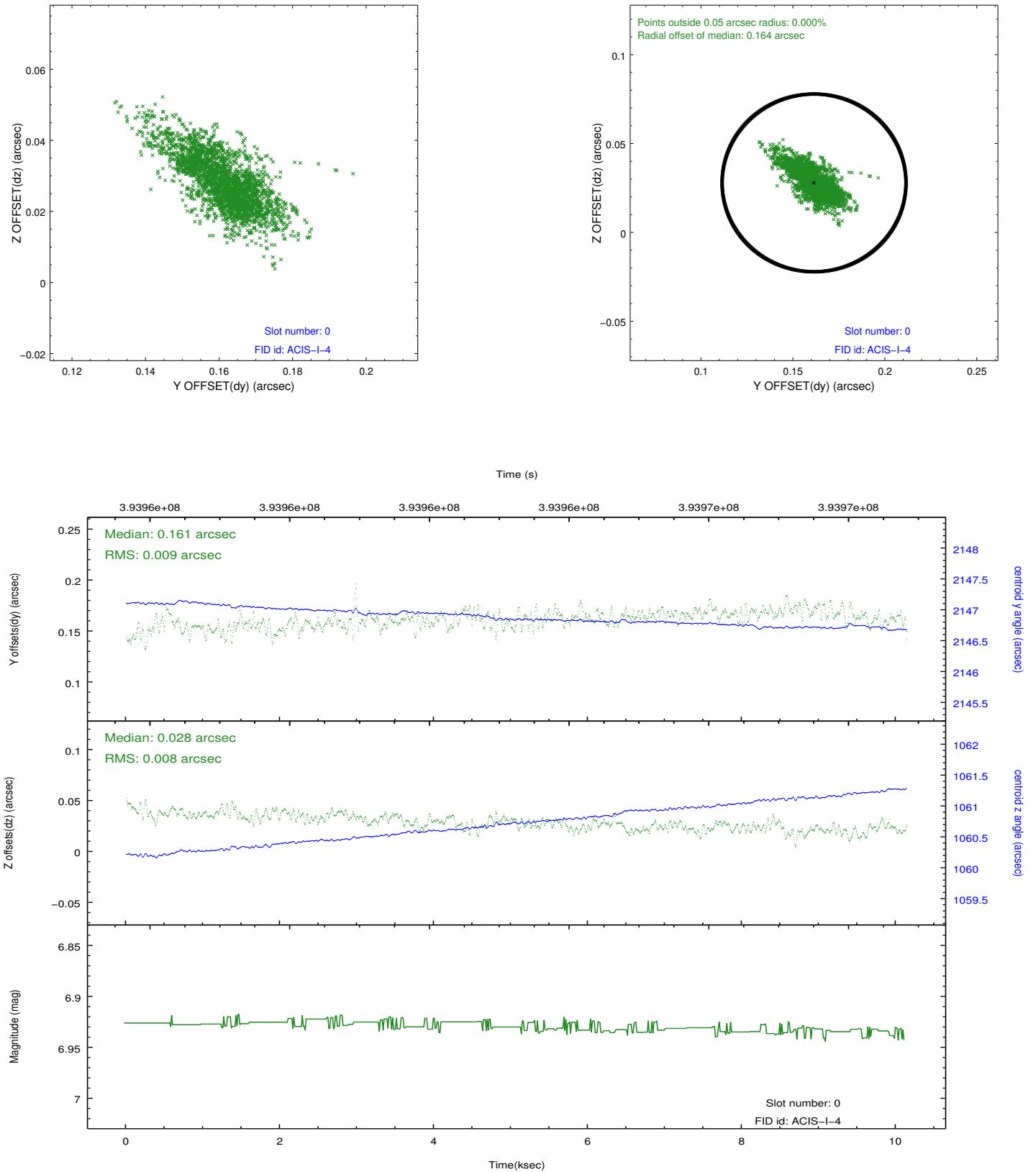


2.4.5 Slot 7

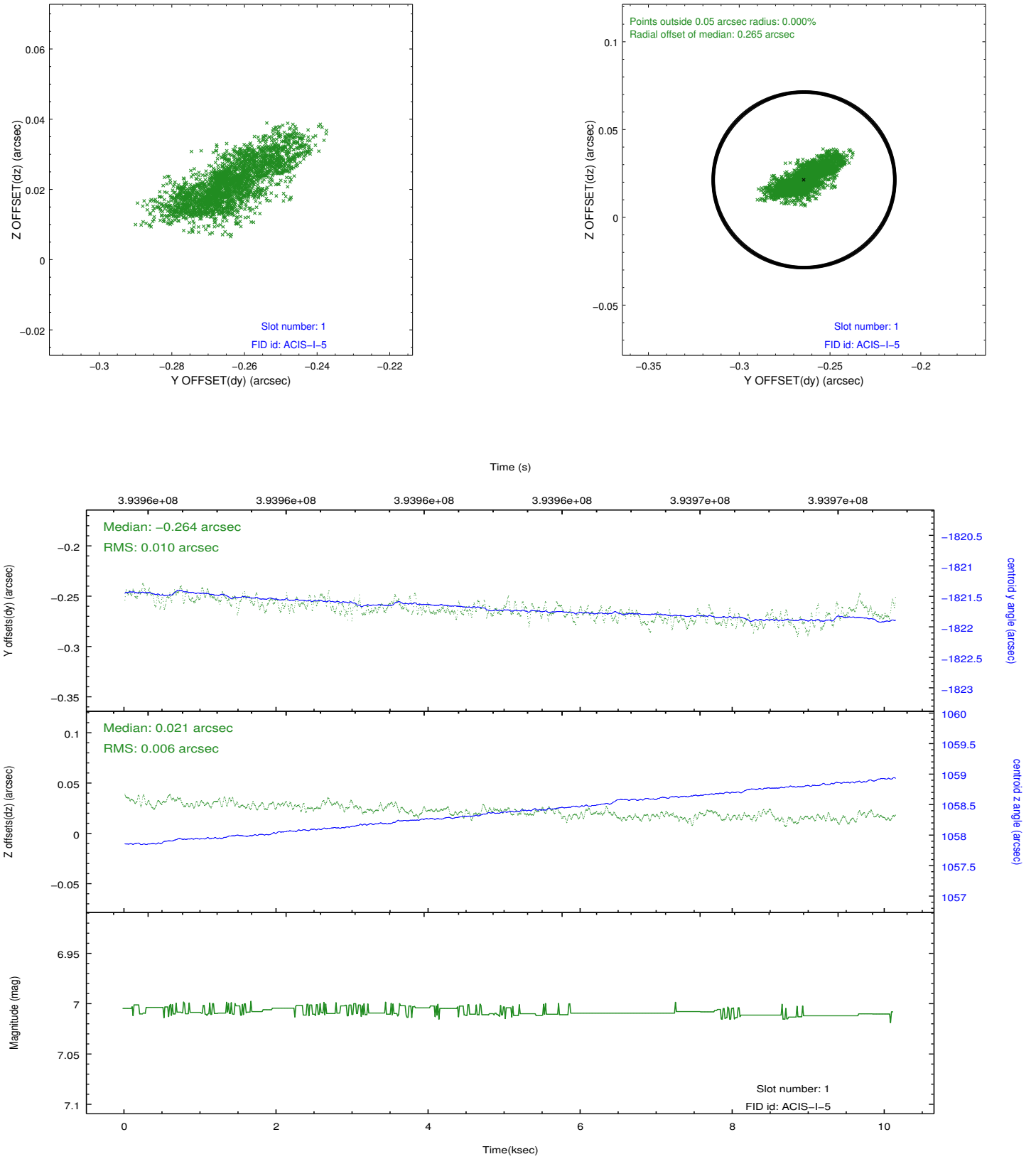


2.5 FID Slots

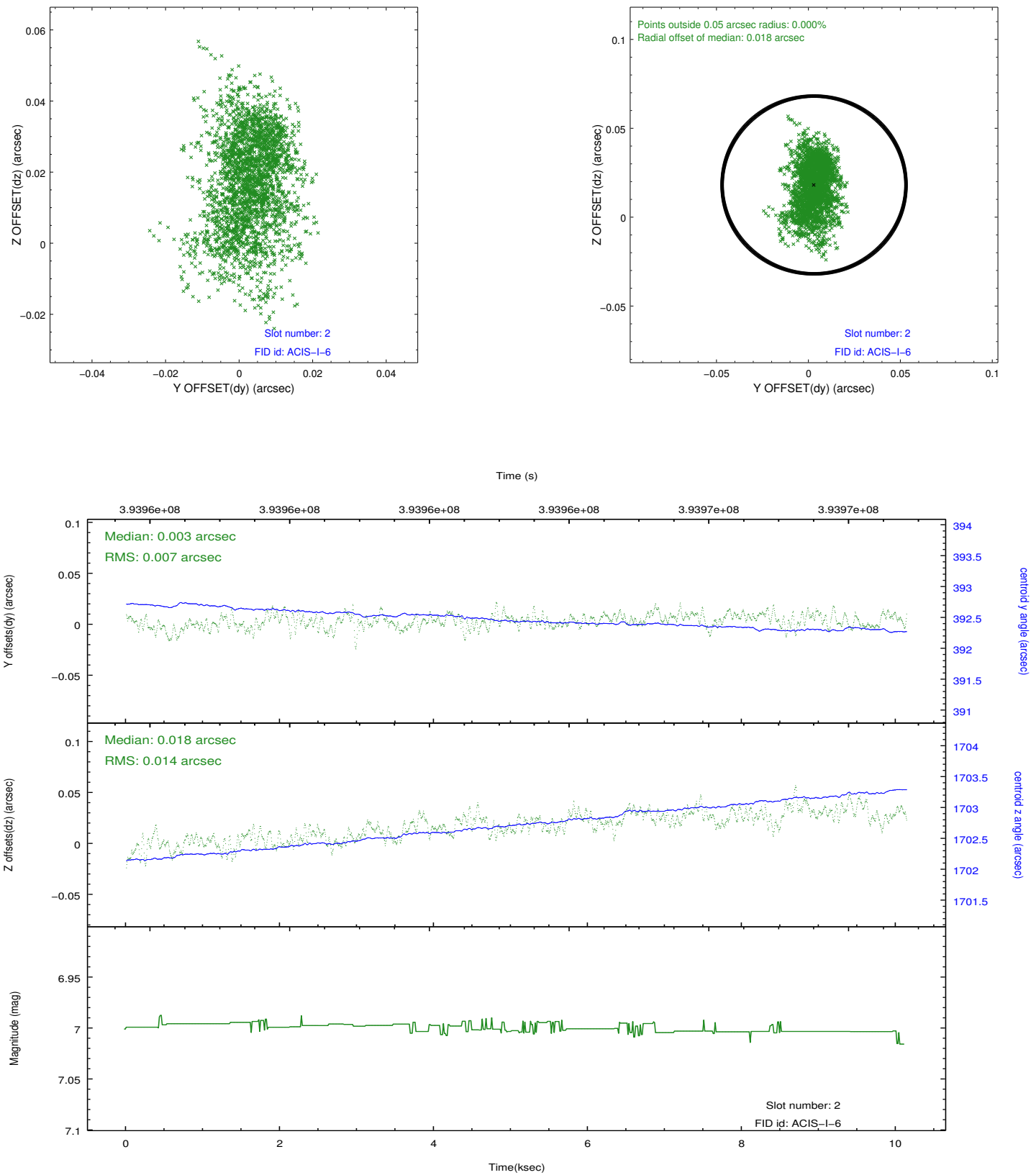
2.5.1 Slot 0



2.5.2 Slot 1



2.5.3 Slot 2



A Summary

A.1 Status

V&V Scientist	Jen Lauer
V&V Date (YYYY-MM-DD)	2012.07.06
V&V Edition	1
V&V Disposition and Status	OK
V&V Charge Time	10.051199962616

A.2 Comments