

V&V Reference Report

L2 ASCDS Version : 8.4.5

Observation 11762 - L2 Version 3
Chandra X-Ray Center

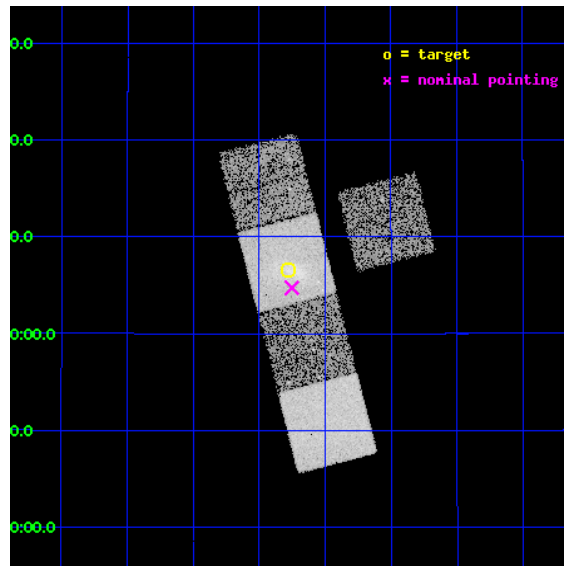
L2 Processing Date : Jul 9 2012

Contents

1	Front	2
2	OBI	3
2.1	OBI	3
2.1.1	Images	3
2.1.2	Bias	3
2.1.3	Parameters	4
2.1.4	Events	4
2.2	Compared Parameters	5
2.3	Aspect	6
2.4	Star Slots	9
2.4.1	Slot 4	9
2.4.2	Slot 6	10
2.4.3	Slot 7	11
2.5	FID Slots	12
2.5.1	Slot 0	12
2.5.2	Slot 1	13
2.5.3	Slot 2	14
A	Summary	15
A.1	Status	15
A.2	Comments	15

1 Front

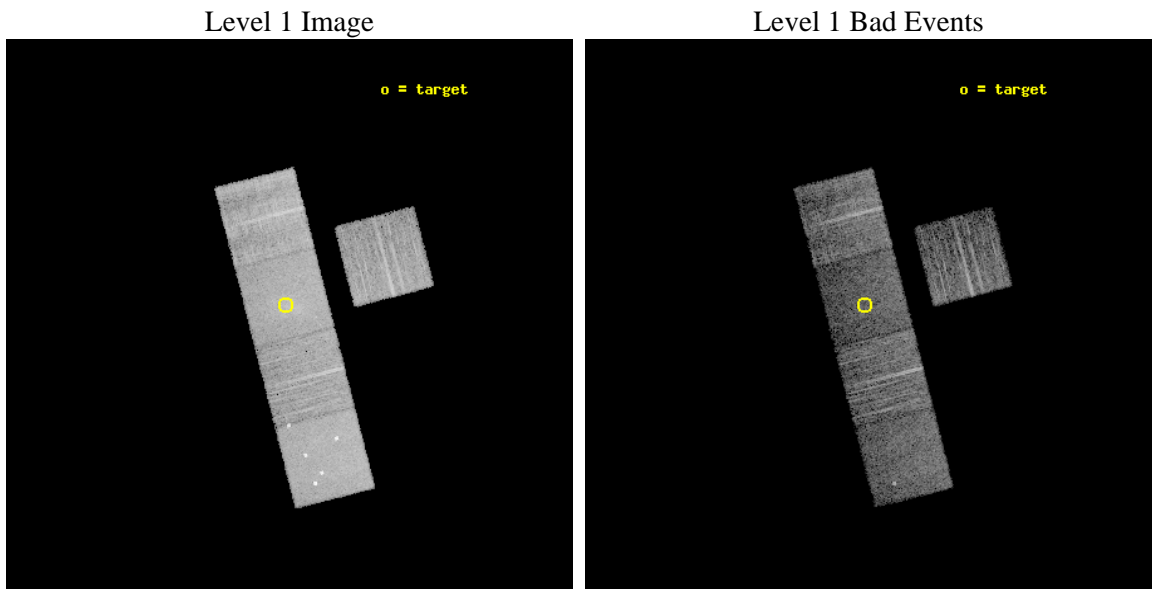
seq_num	800902	Sequence number
obs_id	11762	Observation id
title	The X-Ray, SZ, and Optical Scaling Relations of Massive Galaxy Clusters	Proposal title
observer	Dr. Eli Rykoff	Principal investigator
object	SDSS J1201+2306	Source name
dtcycle	0	
cycle	P	events from which exps? Prim/Second/Both
ra_targ	180.32	Observer's specified target RA [deg]
dec_targ	23.109083	Observer's specified target Dec [deg]
ra_nom	180.31302323704	Nominal RA [deg]
dec_nom	23.078963405352	Nominal Dec [deg]
roll_nom	255.65940147555	Nominal Roll [deg]
revision	3	Processing version of data
ontime	7036.2235295773	Sum of GTIs [s]
livetime	6944.2900891709	Livetime [s]
ontime3	7036.1004095674	Sum of GTIs [s]
ontime5	7036.182489574	Sum of GTIs [s]
ontime6	7033.000469327	Sum of GTIs [s]
ontime7	7036.2235295773	Sum of GTIs [s]
ontime8	7032.9184192419	Sum of GTIs [s]
l2events	86475	Number of level 2 events



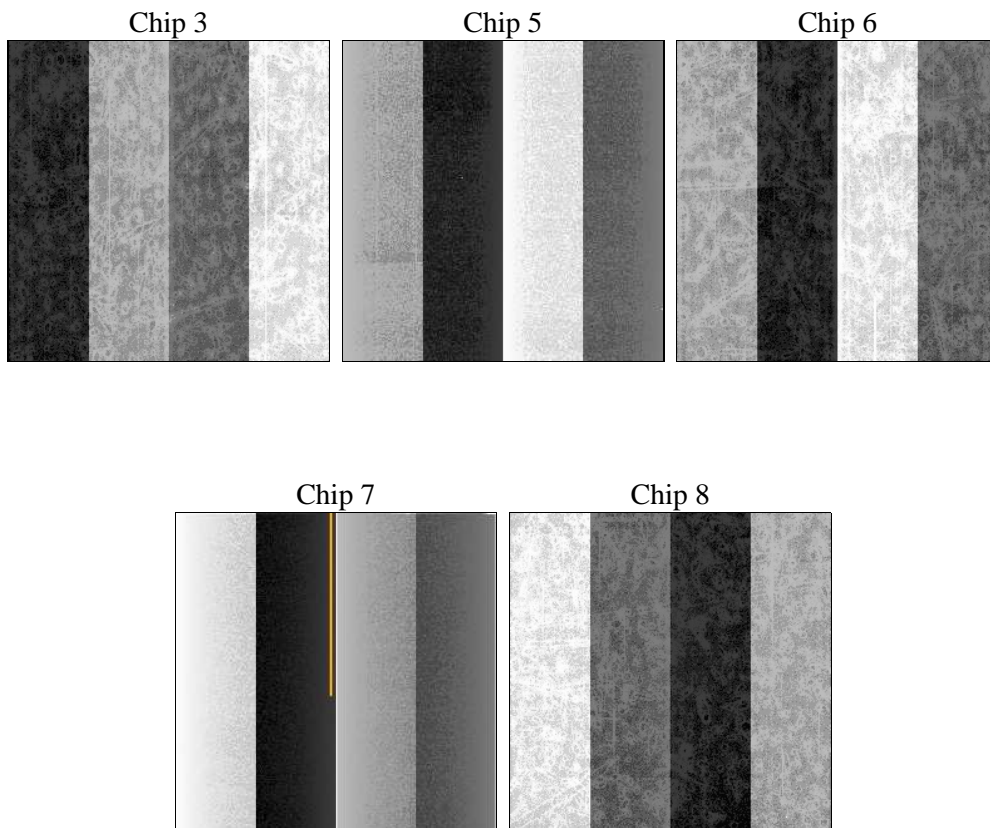
2 OBI

2.1 OBI

2.1.1 Images



2.1.2 Bias



2.1.3 Parameters

obi_num	0	Obi number	sched_exp_time	7000.000000	[s] Scheduled observation exposure time
ascdsver	8.4.5	Processing system revision	ontime	7036.2235295773	Sum of GTIs [s]
caldsver	4.5.0	 	ontime3	7036.1004095674	Sum of GTIs [s]
date	2012-07-09T20:46:45	Date and time of file creation	ontime5	7036.182489574	Sum of GTIs [s]
revision	3	Processing version of data	ontime6	7033.000469327	Sum of GTIs [s]
			ontime7	7036.2235295773	Sum of GTIs [s]
			ontime8	7032.9184192419	Sum of GTIs [s]
			l1events	329281	Number of level 1 events

2.1.4 Events

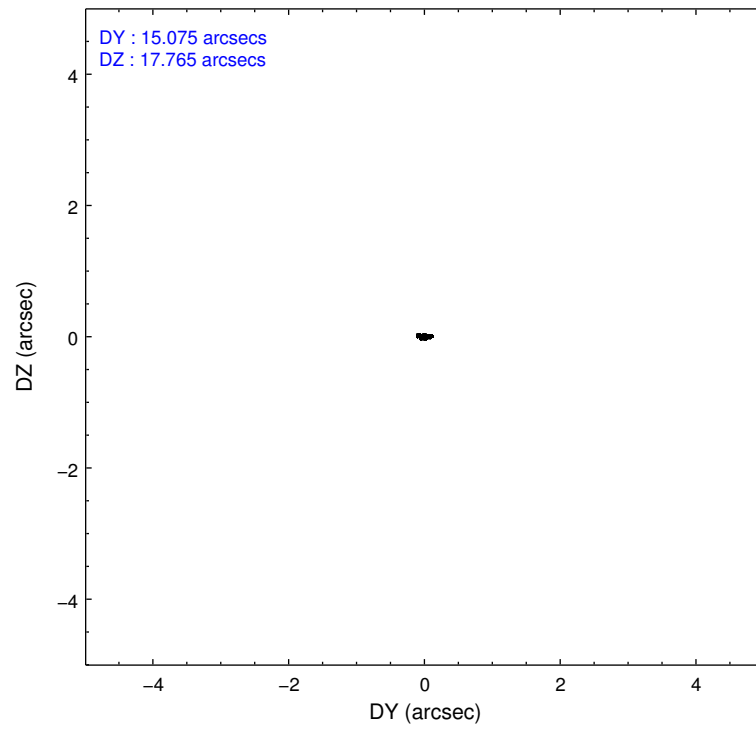
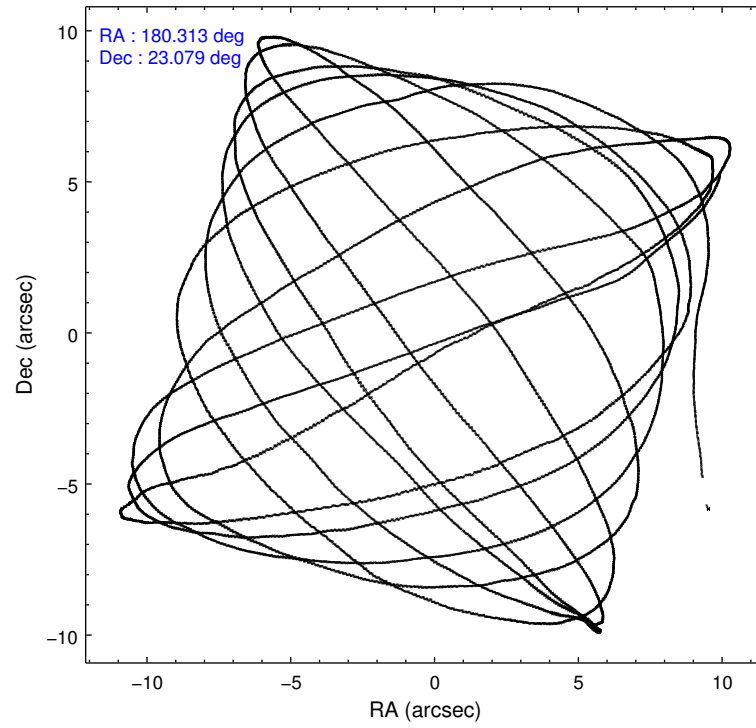
	ccd 3	ccd 5	ccd 6	ccd 7	ccd 8
level 1 events	50837	83398	55431	69248	70367
rejected events	45522	40927	49291	34975	51528
rejected %	89%	49%	88%	50%	73%

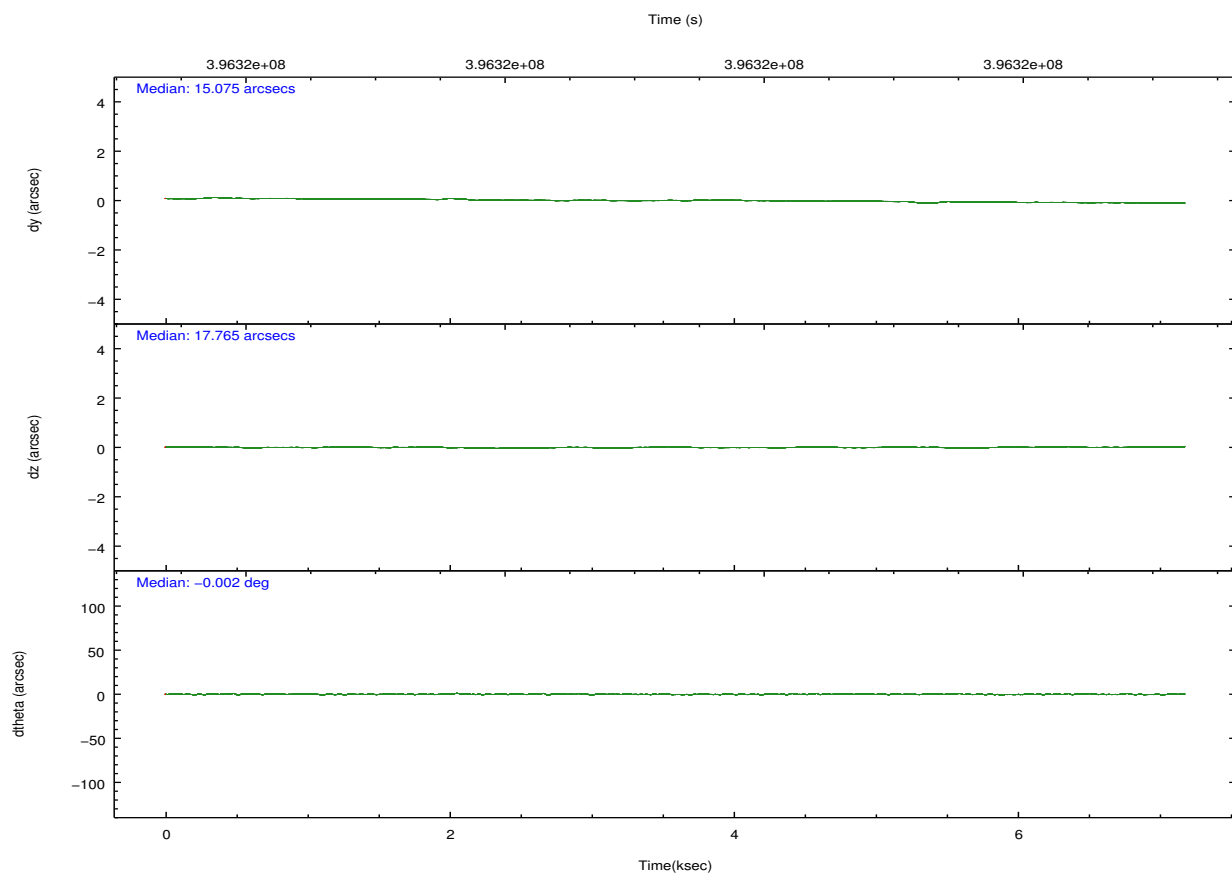
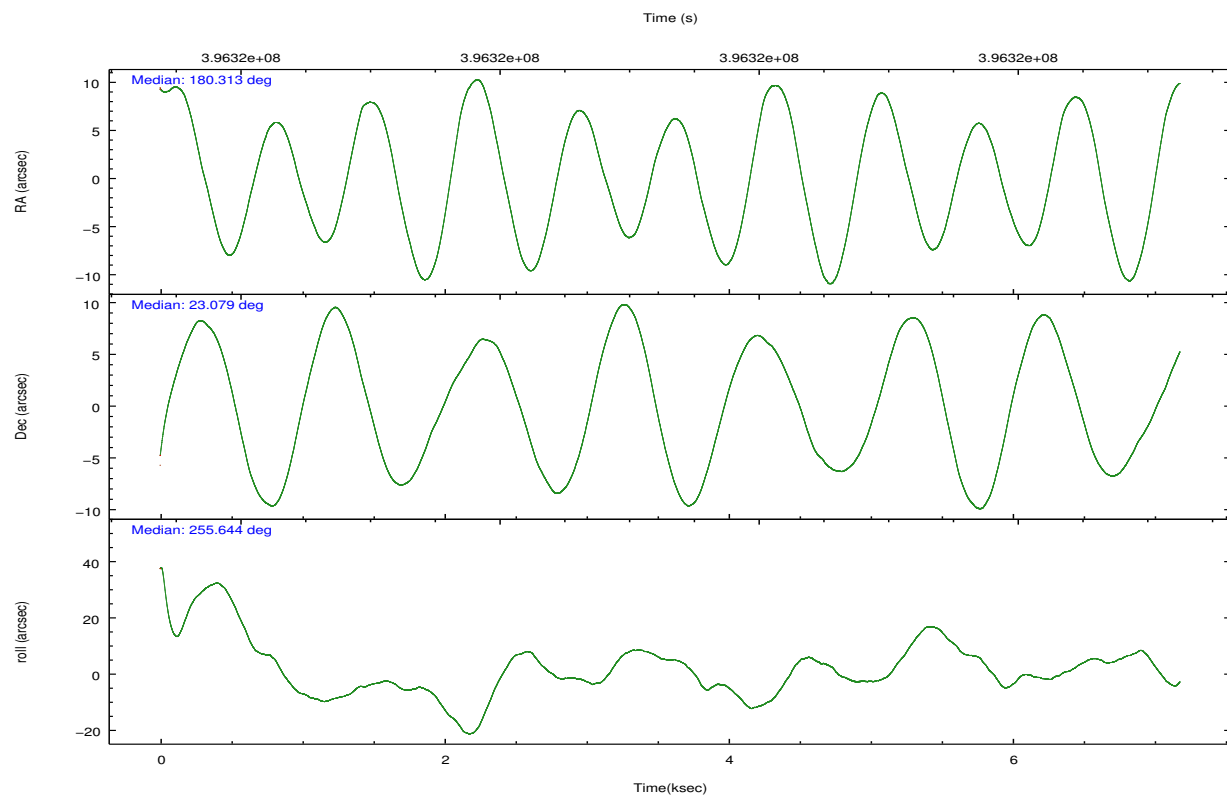
	ccd 3	ccd 5	ccd 6	ccd 7	ccd 8
grade 0 events	1936	6689	2217	4384	5710
	3%	8%	3%	6%	8%
grade 1 events	32	178	22	76	65
	0%	0%	0%	0%	0%
grade 2 events	1135	12056	1366	7259	4321
	2%	14%	2%	10%	6%
grade 3 events	544	1651	632	3212	1917
	1%	1%	1%	4%	2%
grade 4 events	591	1502	627	3261	1840
	1%	1%	1%	4%	2%
grade 5 events	2276	6094	2375	6716	3440
	4%	7%	4%	9%	4%
grade 6 events	1113	20617	1311	16182	5070
	2%	24%	2%	23%	7%
grade 7 events	43210	34611	46881	28158	48004
	84%	41%	84%	40%	68%

2.2 Compared Parameters

Parameter	Planned	Actual	Parameter	Planned	Actual
Instrument	ACIS	ACIS	Obspar format version number	7	7
Detector	ACIS-35678	ACIS-35678	Obspar file type	PREDICTED	ACTUAL
Grating	NONE	NONE	Obspar update status	NONE	UPDATED
Data mode	VFAINT	VFAINT	Number of optional ACIS chips dropped	0	0
Observation mode	POINTING	POINTING	On-chip summing requested	N	N
[deg] Pointing RA	180.304567	180.3130232370442	Subarray requested	NONE	NONE
[deg] Pointing Dec	23.105179	23.07896340535238	Alternating exposures requested	N	N
[deg] Pointing Roll	255.506054	255.6594014755451	[s] Primary exposure time	0.000000	3.1
[mm] SIM focus pos	-0.684267	-0.6828225247311905			
[mm] SIM defocus	0	0.001444936568705701			
[mm] SIM translation stage pos	-190.132523	-190.1425803651734			
[mm] SIM translation stage offset	0	0.01005778216563158			
[s] Observation start time (MET)	396317902.184000	396316566.5826			
Observation start date	2010-07-24T00:17:16	2010-07-23T23:56:06			
[s] Observation end time (MET)	396324902.184000	396325901.25808			
Observation end date	2010-07-24T02:13:56	2010-07-24T02:31:41			
Read mode	TIMED	TIMED			

2.3 Aspect



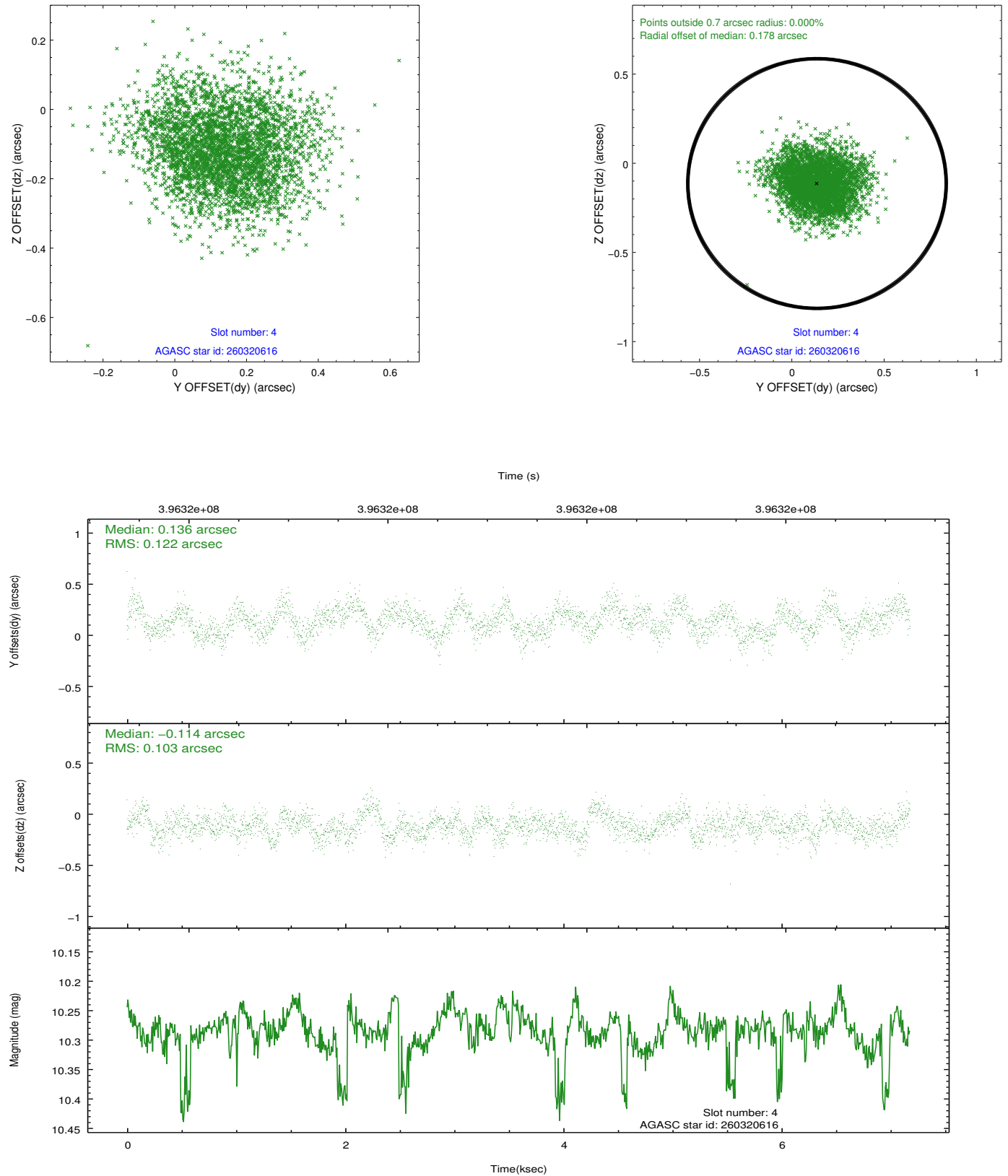


Slot Statistics

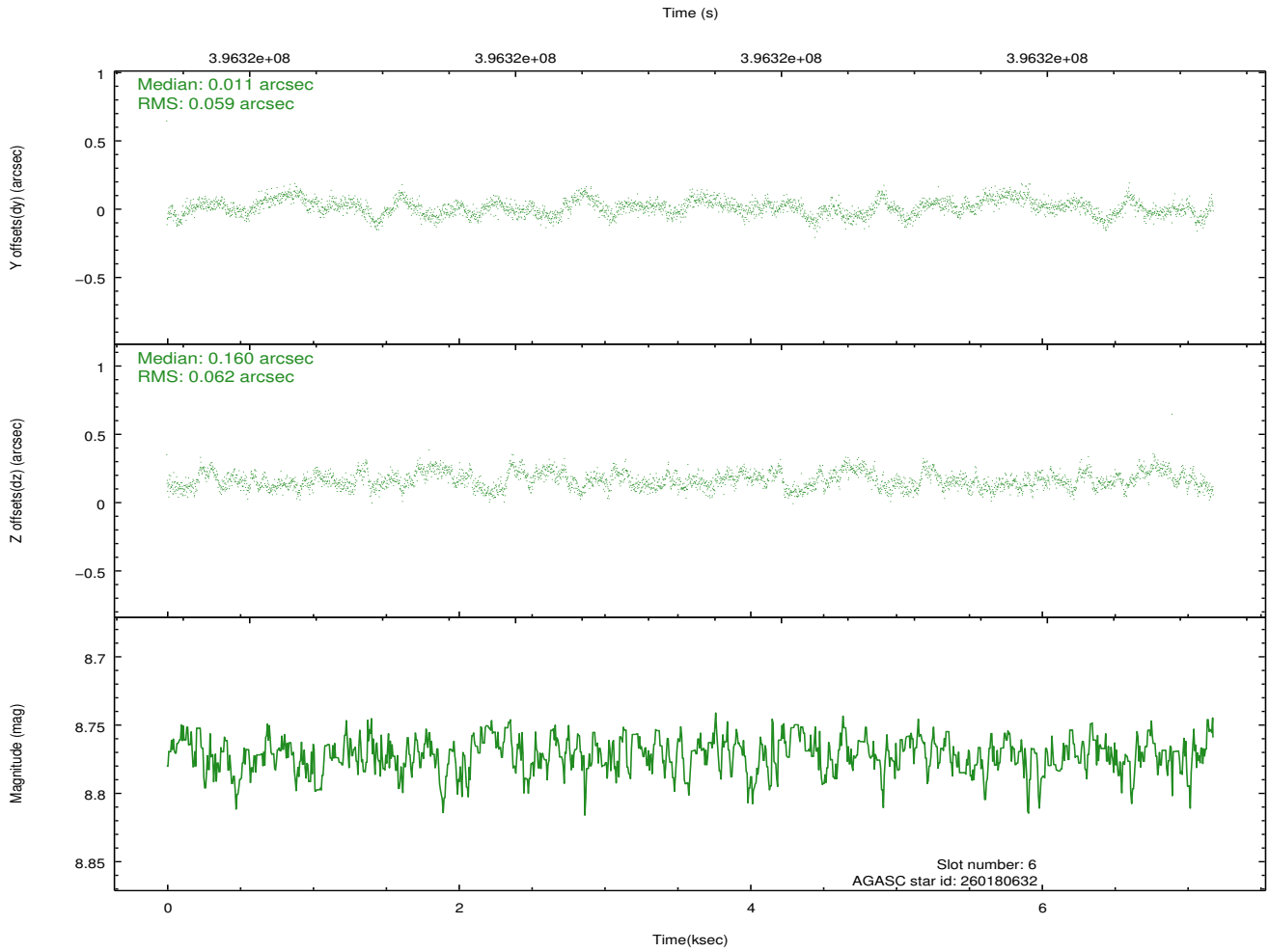
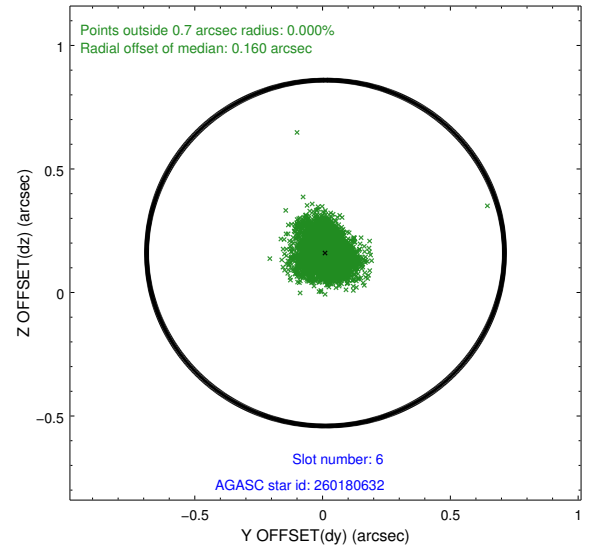
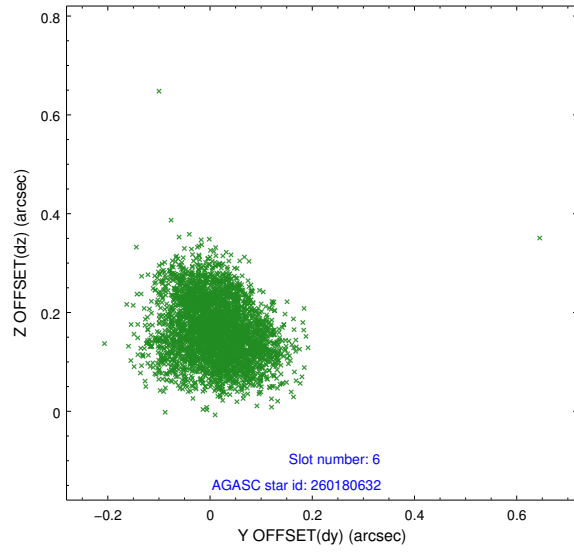
slot	status	id	mag	n_pts	med_dy	med_dz	dr1	dr2	ra	dec	mean_y	mean_z
0	FID	ACIS-S-2	6.86	1752	-0.054	-0.021	0.006	0.010	0.000000	0.000000	-768.16	-1739.16
1	FID	ACIS-S-4	6.95	1752	0.145	0.032	0.005	0.010	0.000000	0.000000	2145.01	168.45
2	FID	ACIS-S-5	6.98	1752	-0.121	-0.002	0.006	0.011	0.000000	0.000000	-1819.98	163.12
3	OMITTED		0.00	0	0.000	0.000	0.000	0.000	0.000000	0.000000	0.00	0.00
4	GUIDE	260320616	10.28	3490	0.136	-0.114	0.170	0.273	180.622950	23.624803	-2074.90	548.10
5	OMITTED		0.00	0	0.000	0.000	0.000	0.000	0.000000	0.000000	0.00	0.00
6	GUIDE	260180632	8.77	3502	0.011	0.160	0.092	0.142	179.568974	23.188670	312.57	-2432.43
7	GUIDE	260182104	8.77	3498	-0.147	-0.053	0.095	0.148	179.774766	23.905984	-2356.88	-2411.74

2.4 Star Slots

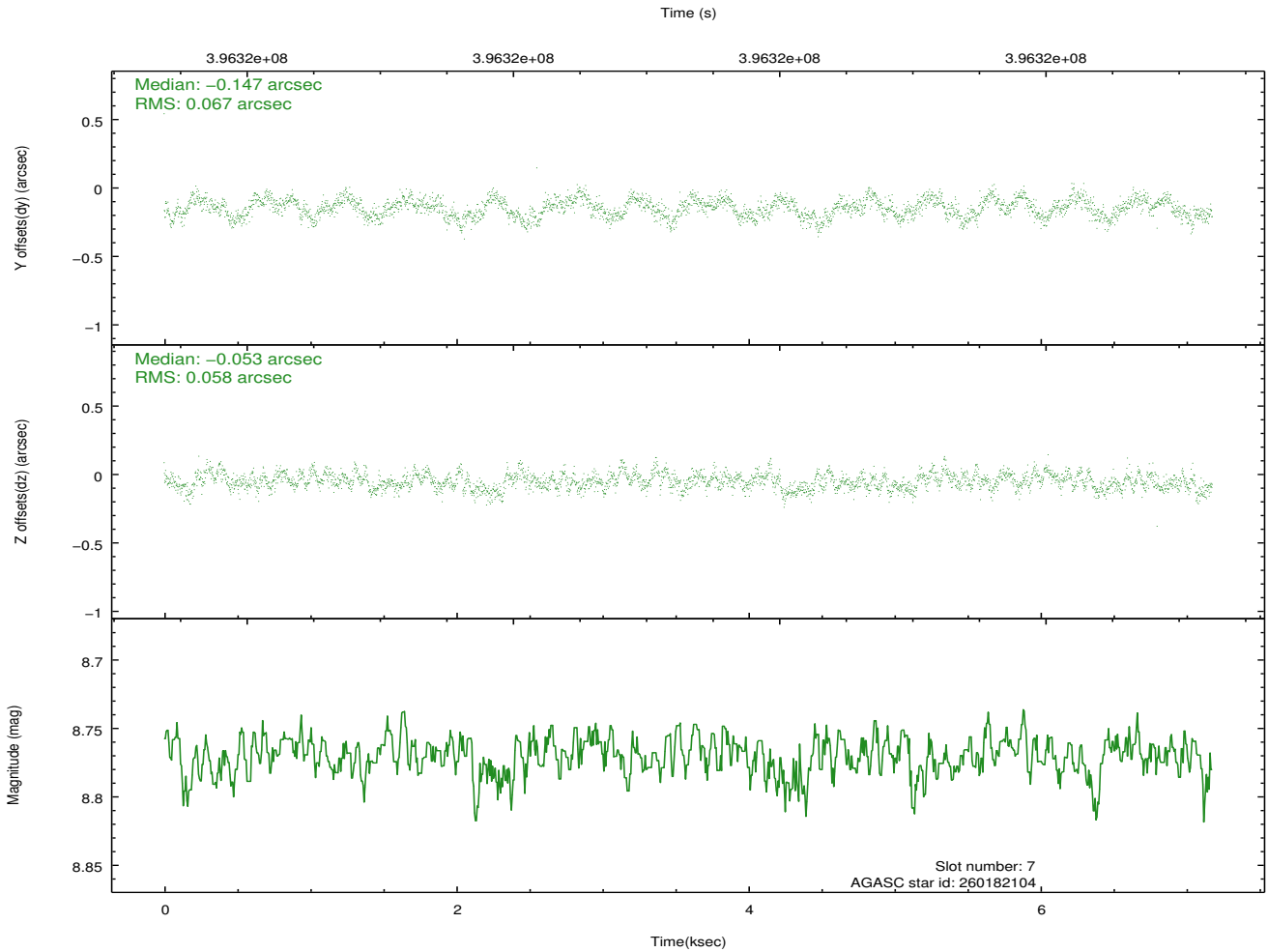
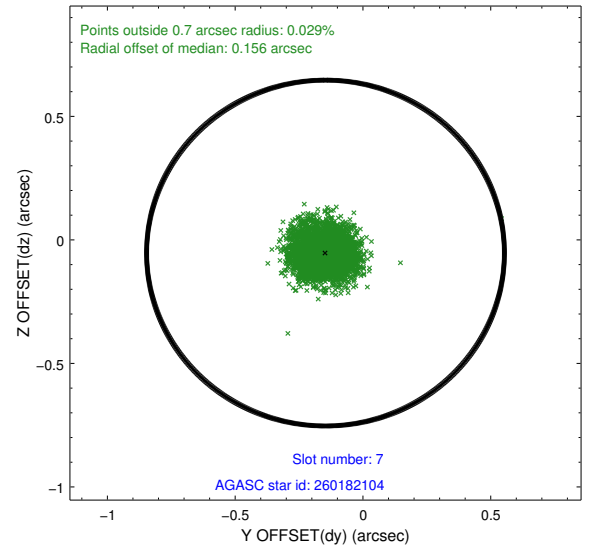
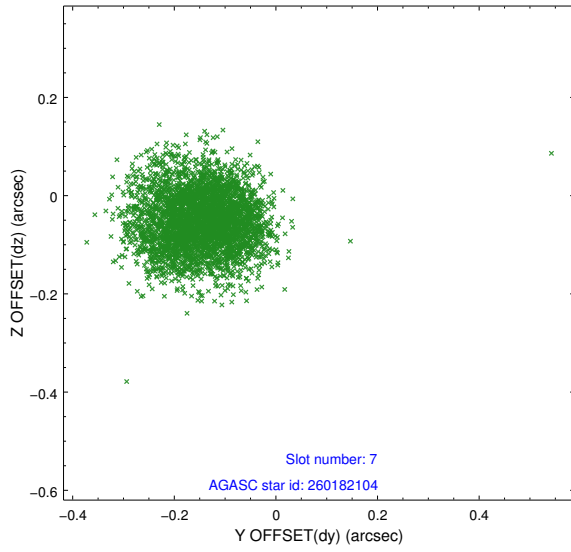
2.4.1 Slot 4



2.4.2 Slot 6

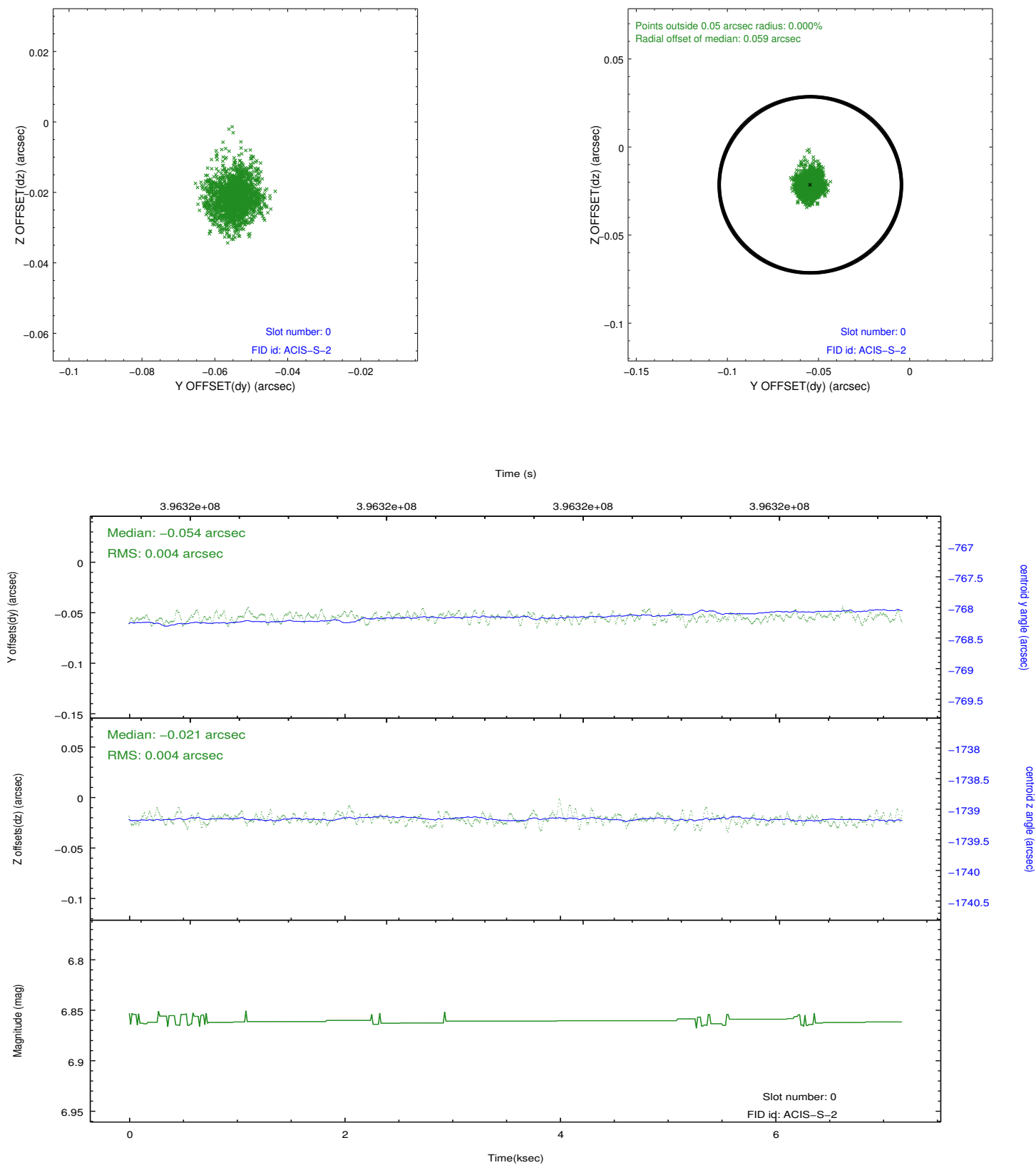


2.4.3 Slot 7

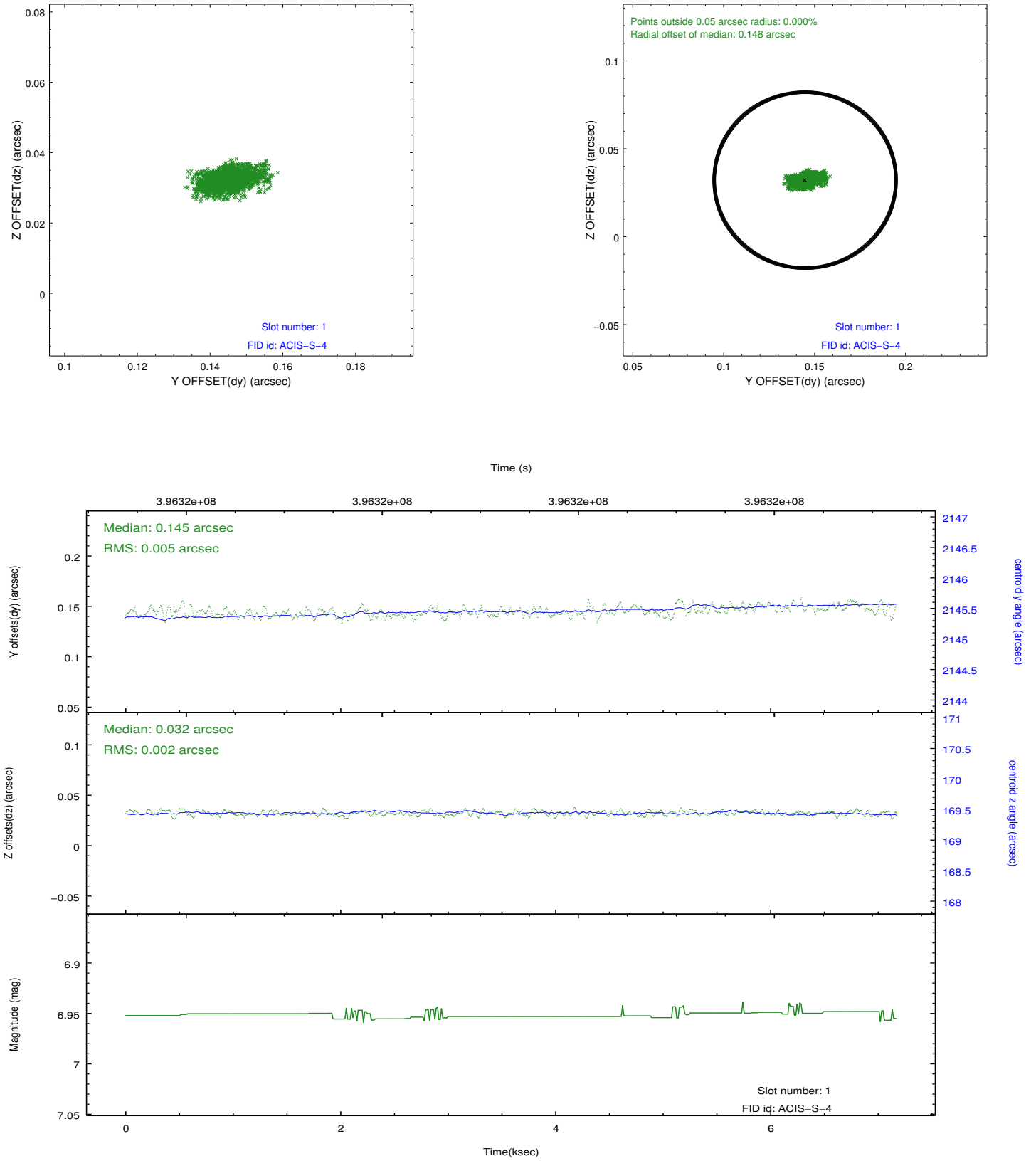


2.5 FID Slots

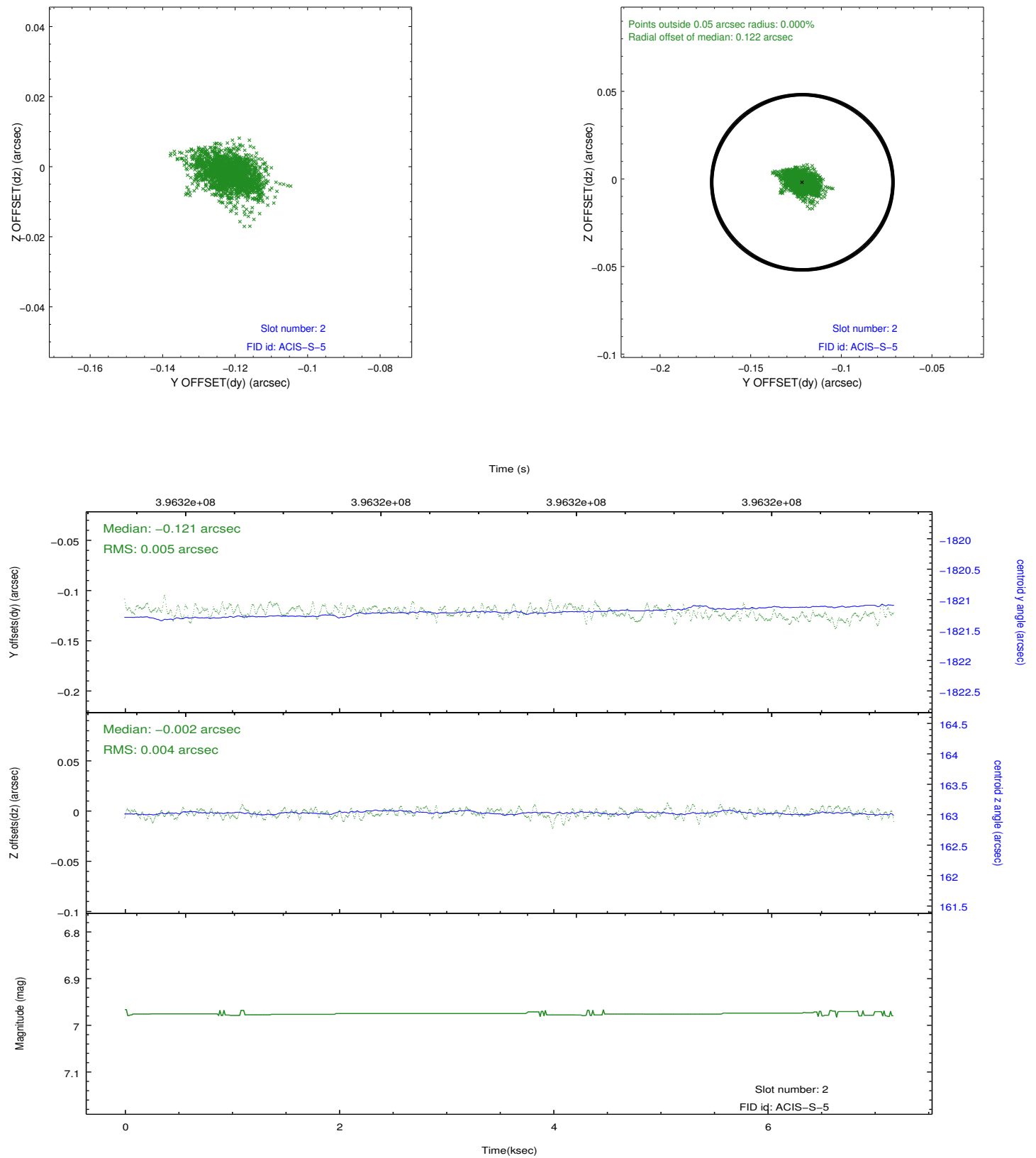
2.5.1 Slot 0



2.5.2 Slot 1



2.5.3 Slot 2



A Summary

A.1 Status

V&V Scientist	Beth Sundheim
V&V Date (YYYY-MM-DD)	2012.07.18
V&V Edition	1
V&V Disposition and Status	OK
V&V Charge Time	7.036223524332

A.2 Comments

The guide stars in slots 3 and 5 were removed from the aspect solution due to poor data quality. The aspect solution is improved by the removal of these guide stars from the solution.