

# V&V Reference Report

## L2 ASCDS Version : 8.4.5

Observation 11722 - L2 Version 2  
Chandra X-Ray Center

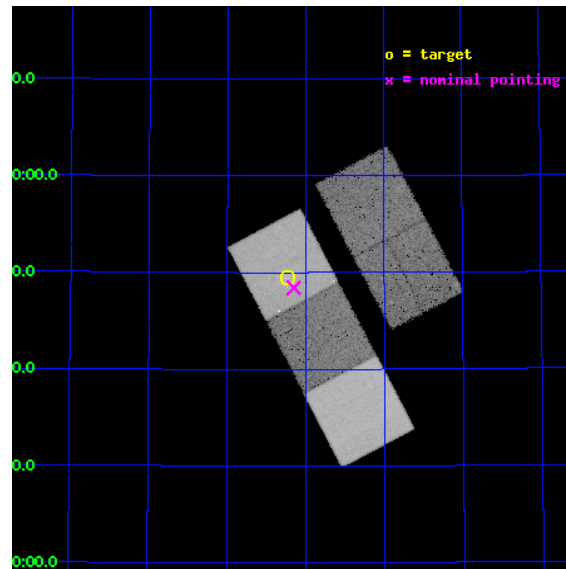
L2 Processing Date : Jul 1 2012

## Contents

<b>1</b>	<b>Front</b>	<b>2</b>
<b>2</b>	<b>OBI</b>	<b>3</b>
2.1	OBI . . . . .	3
2.1.1	Images . . . . .	3
2.1.2	Bias . . . . .	3
2.1.3	Parameters . . . . .	4
2.1.4	Events . . . . .	4
2.2	Compared Parameters . . . . .	5
2.3	Aspect . . . . .	6
2.4	Star Slots . . . . .	9
2.4.1	Slot 3 . . . . .	9
2.4.2	Slot 4 . . . . .	10
2.4.3	Slot 5 . . . . .	11
2.4.4	Slot 6 . . . . .	12
2.4.5	Slot 7 . . . . .	13
2.5	FID Slots . . . . .	14
2.5.1	Slot 0 . . . . .	14
2.5.2	Slot 1 . . . . .	15
2.5.3	Slot 2 . . . . .	16
<b>A</b>	<b>Summary</b>	<b>17</b>
A.1	Status . . . . .	17
A.2	Comments . . . . .	17

# 1 Front

seq_num	800862	Sequence number
obs_id	11722	Observation id
title	Massive Galaxy Clusters at High Redshift from the Spitzer SpARCS Survey	Proposal title
observer	Dr. Erica Ellingson	Principal investigator
object	EN1-240	Source name
dtcycle	0	&#160
cycle	P	events from which exps? Prim/Second/Both
ra_targ	243.308333	Observer's specified target RA [deg]
dec_targ	56.824722	Observer's specified target Dec [deg]
ra_nom	243.28792195255	Nominal RA [deg]
dec_nom	56.807129821043	Nominal Dec [deg]
roll_nom	242.22555068409	Nominal Roll [deg]
revision	2	Processing version of data
ontime	30039.000231028	Sum of GTIs [s]
livetime	29646.518578619	Livetime [s]
ontime2	30035.859260678	Sum of GTIs [s]
ontime3	30039.000231028	Sum of GTIs [s]
ontime5	30039.000231028	Sum of GTIs [s]
ontime6	30032.718359947	Sum of GTIs [s]
ontime7	30039.000231028	Sum of GTIs [s]
l2events	341823	Number of level 2 events

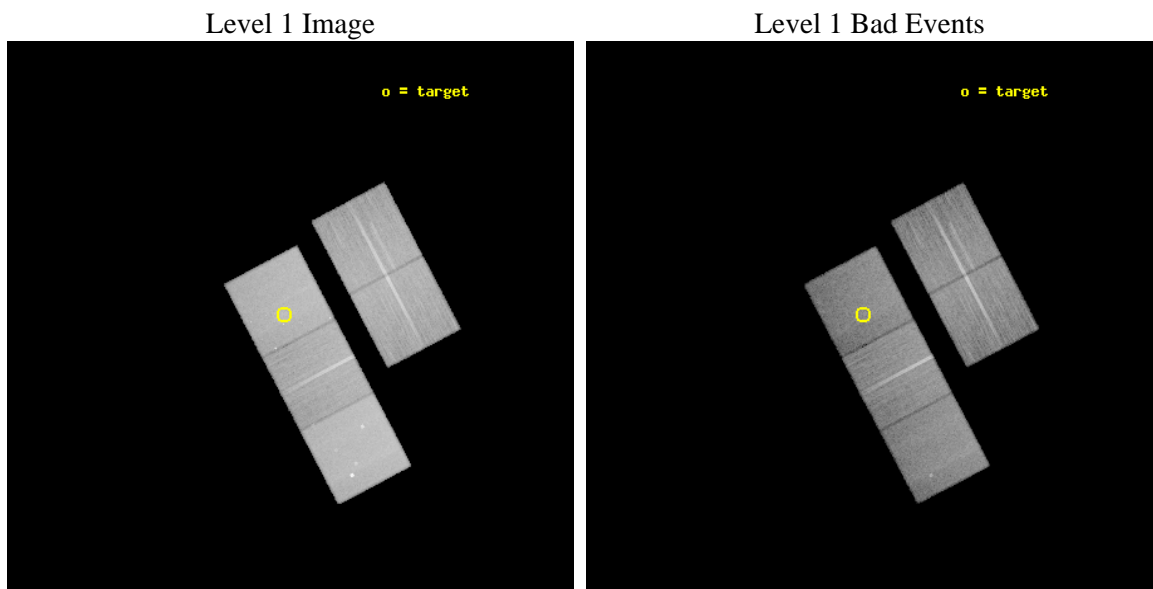




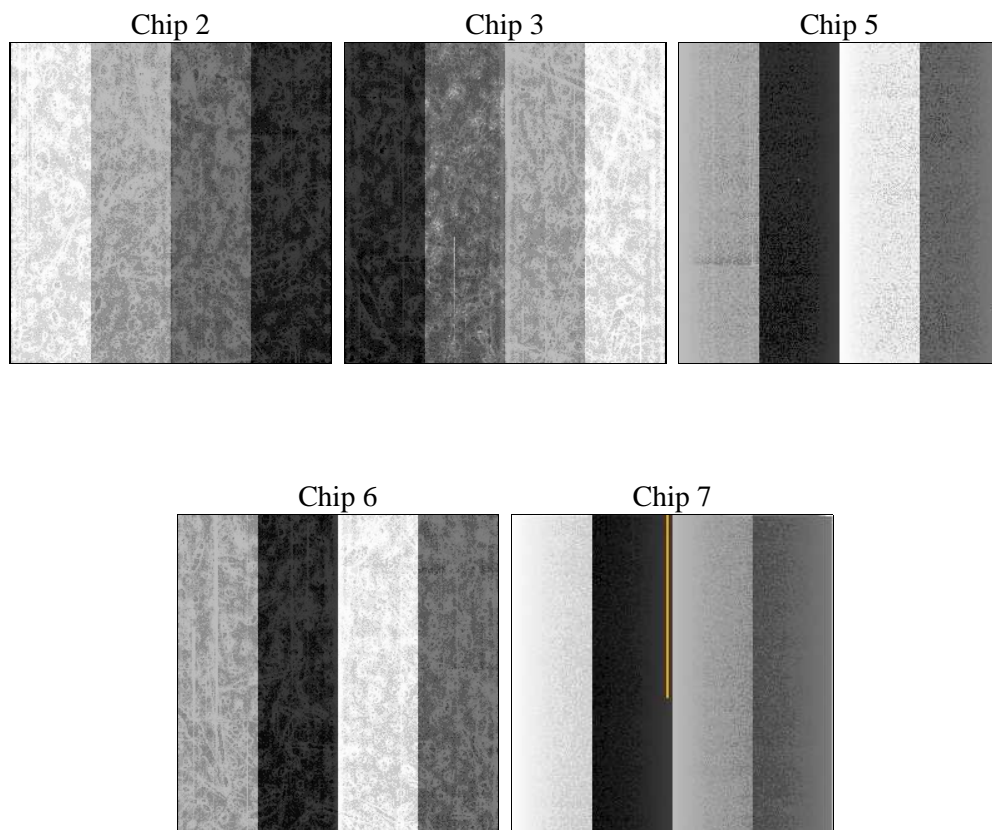
## 2 OBI

### 2.1 OBI

#### 2.1.1 Images



#### 2.1.2 Bias



### 2.1.3 Parameters

obi_num	0	Obi number	sched_exp_time	30000.066000	[s] Scheduled observation exposure time
ascdsver	8.4.5	Processing system revision	ontime	30039.000231028	Sum of GTIs [s]
caldsver	4.5.0	&#160	ontime2	30035.859260678	Sum of GTIs [s]
date	2012-07-01T02:43:44	Date and time of file creation	ontime3	30039.000231028	Sum of GTIs [s]
revision	2	Processing version of data	ontime5	30039.000231028	Sum of GTIs [s]
			ontime6	30032.718359947	Sum of GTIs [s]
			ontime7	30039.000231028	Sum of GTIs [s]
			l1events	1283594	Number of level 1 events

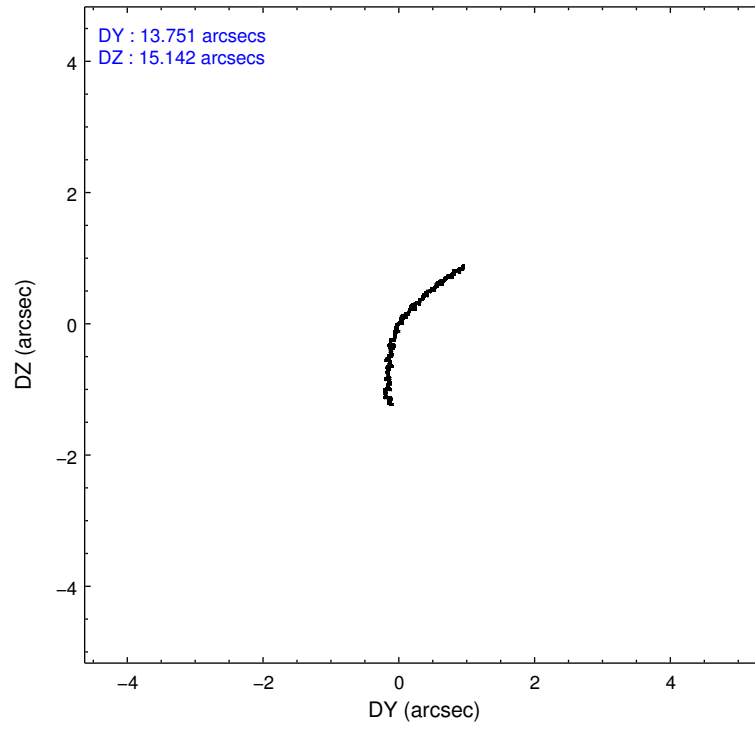
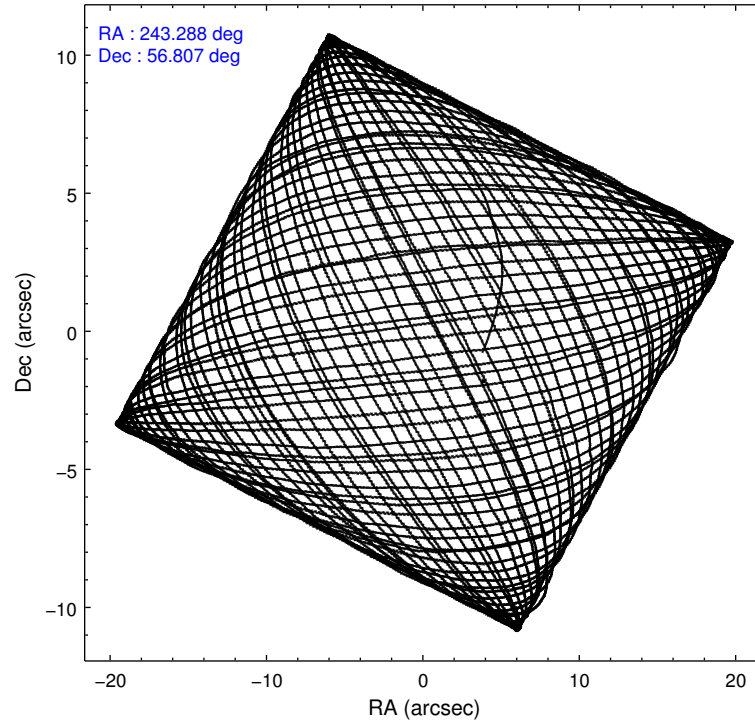
### 2.1.4 Events

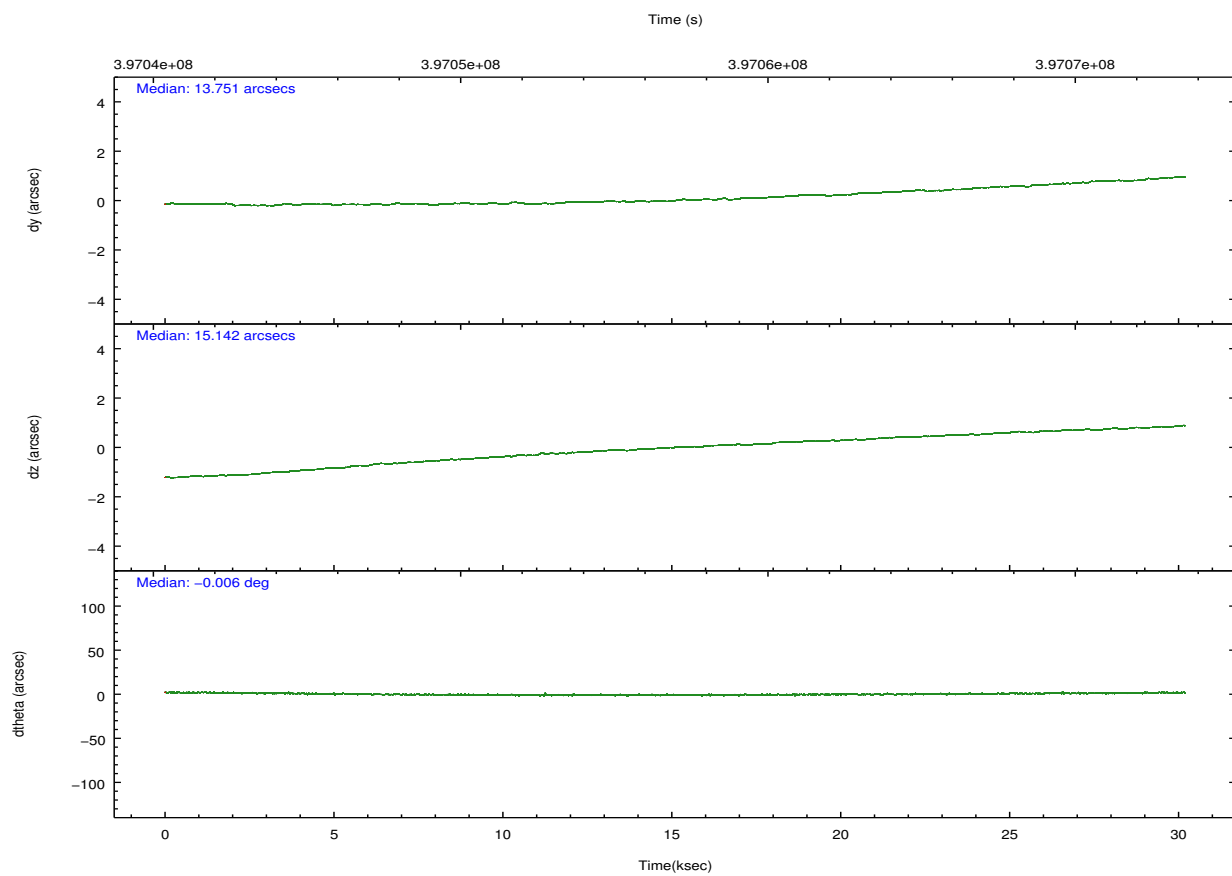
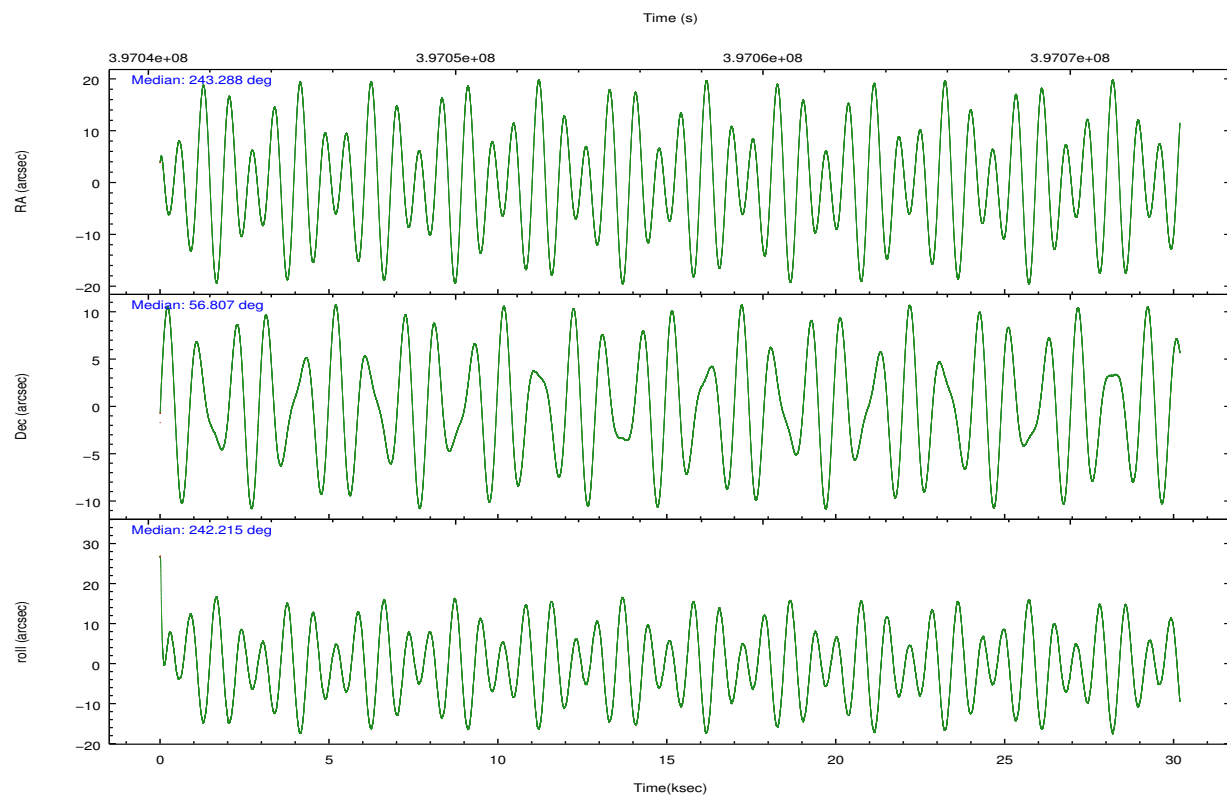
	ccd 2	ccd 3	ccd 5	ccd 6	ccd 7		ccd 2	ccd 3	ccd 5	ccd 6	ccd 7
level 1 events	223884	217070	339751	225431	277458	grade 0 events	8169	7814	15611	8331	12425
rejected events	200290	194600	172204	200510	151094		3%	3%	4%	3%	4%
rejected %	89%	89%	50%	88%	54%	grade 1 events	122	102	1042	138	346
							0%	0%	0%	0%	0%
						grade 2 events	5786	4927	50701	5700	25870
							2%	2%	14%	2%	9%
						grade 3 events	2530	2540	6699	2636	11338
							1%	1%	1%	1%	4%
						grade 4 events	2553	2499	6452	2649	11094
							1%	1%	1%	1%	3%
						grade 5 events	8315	9931	25994	10108	28730
							3%	4%	7%	4%	10%
						grade 6 events	4563	4694	88104	5608	65648
							2%	2%	25%	2%	23%
						grade 7 events	191846	184563	145148	190261	122007
							85%	85%	42%	84%	43%

## 2.2 Compared Parameters

Parameter	Planned	Actual	Parameter	Planned	Actual
Instrument	ACIS	ACIS	Obspar format version number	7	7
Detector	ACIS-23567	ACIS-23567	Obspar file type	PREDICTED	ACTUAL
Grating	NONE	NONE	Obspar update status	NONE	UPDATED
Data mode	VFAINT	VFAINT	Number of optional ACIS chips dropped	0	0
Observation mode	POINTING	POINTING	On-chip summing requested	N	N
[deg] Pointing RA	243.285317	243.2879219525495	Subarray requested	NONE	NONE
[deg] Pointing Dec	56.834410	56.80712982104264	Alternating exposures requested	N	N
[deg] Pointing Roll	242.071090	242.2255506840864	[s] Primary exposure time	0.000000	3.1
[mm] SIM focus pos	-0.684267	-0.6828225247311905			
[mm] SIM defocus	0	0.001444936568705701			
[mm] SIM translation stage pos	-190.132523	-190.1400660498719			
[mm] SIM translation stage offset	0	0.00754346686406393			
[s] Observation start time (MET)	397042076.184000	397040930.01965			
Observation start date	2010-08-01T09:26:50	2010-08-01T09:08:50			
[s] Observation end time (MET)	397072076.184000	397072302.19625			
Observation end date	2010-08-01T17:46:50	2010-08-01T17:51:42			
Read mode	TIMED	TIMED			

## 2.3 Aspect



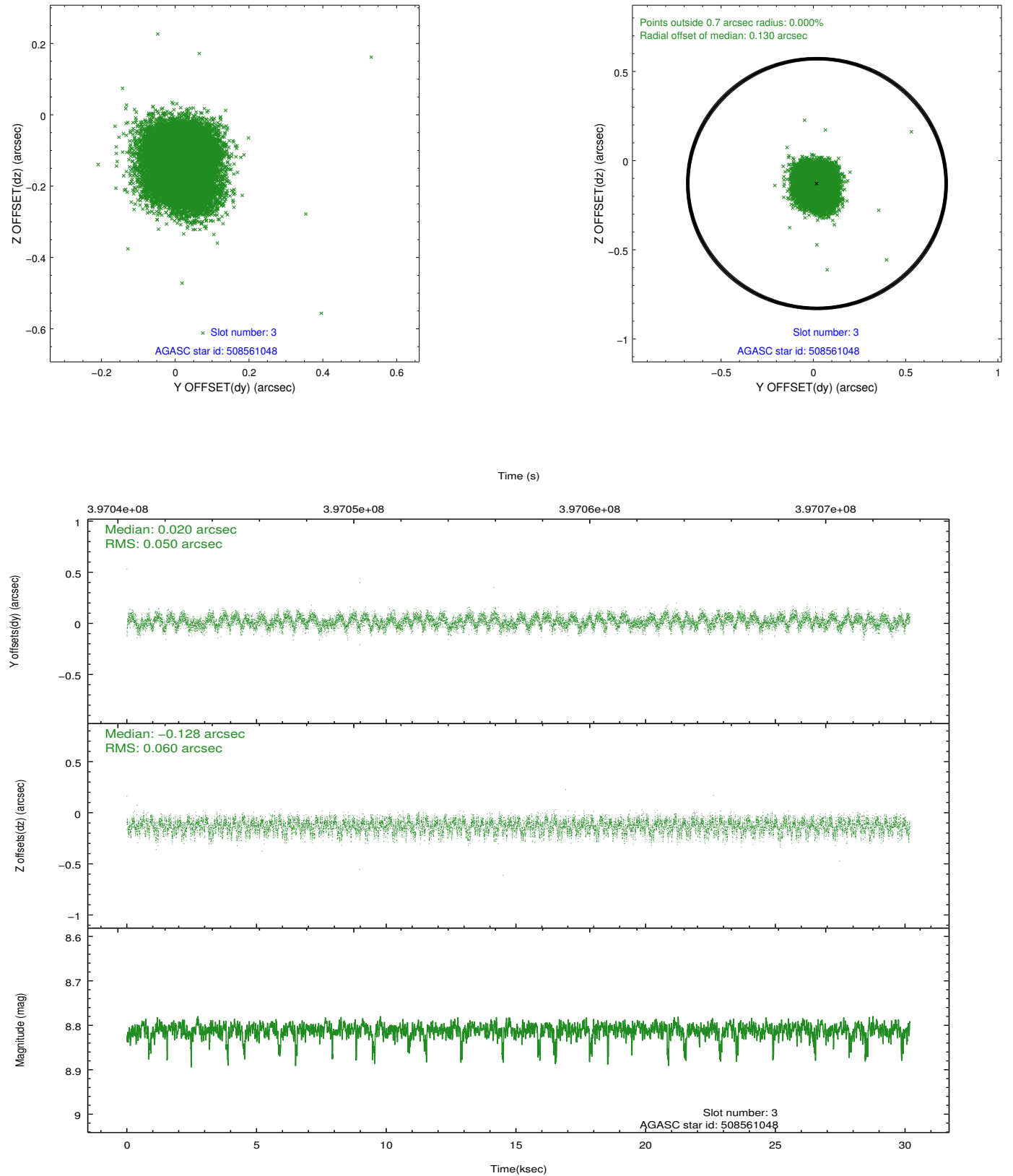


### Slot Statistics

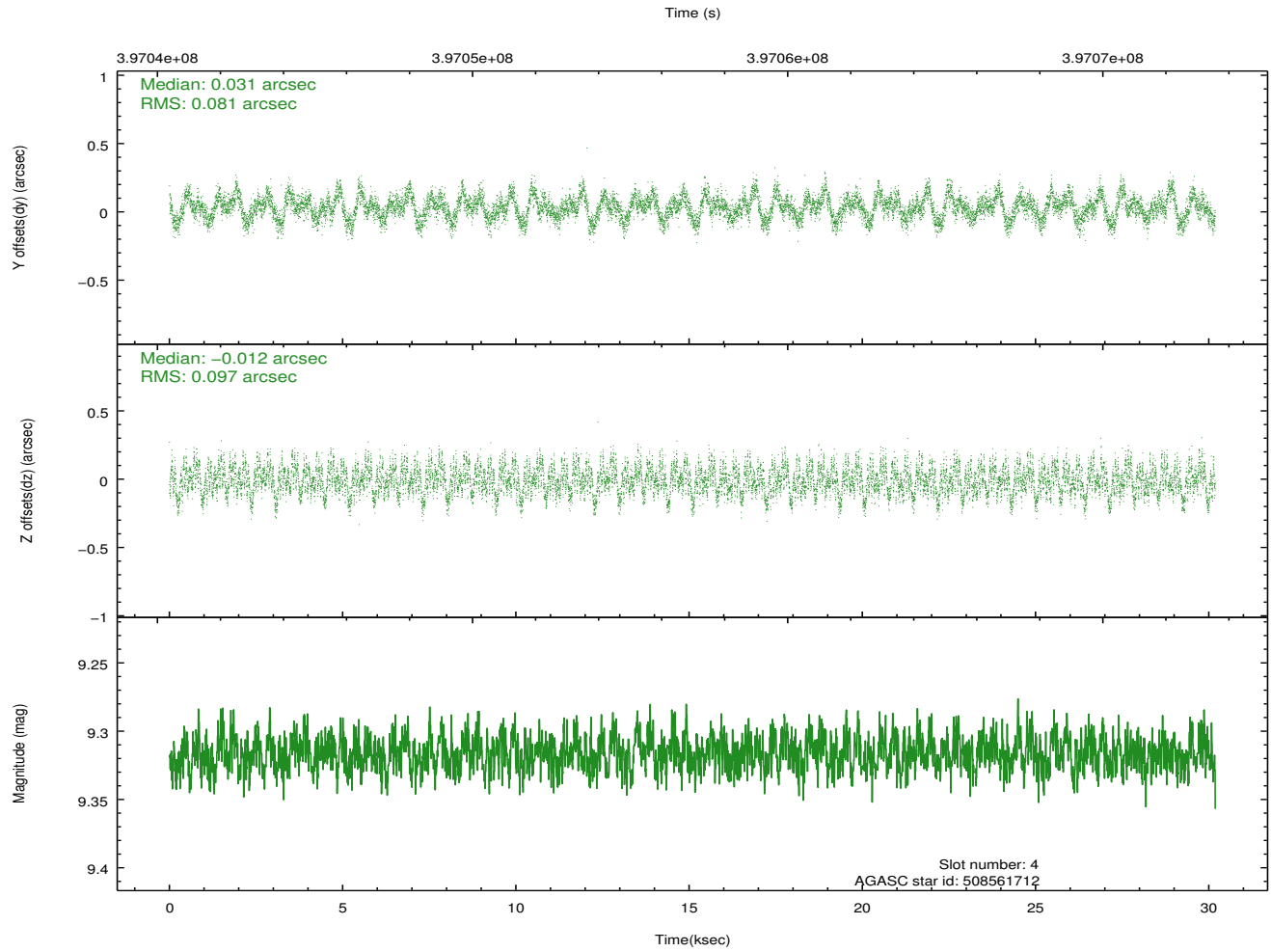
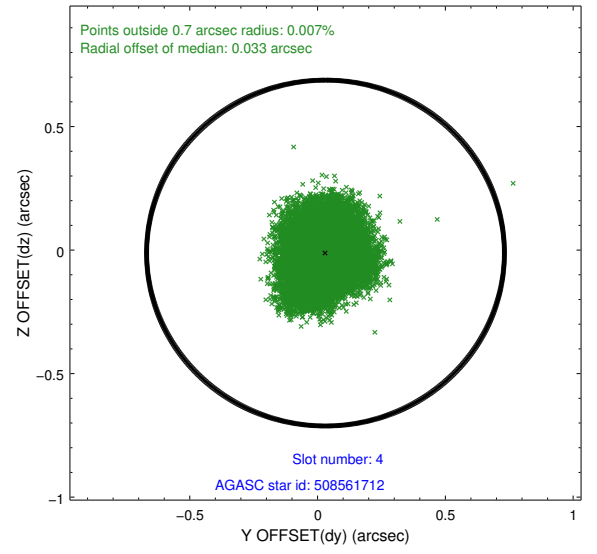
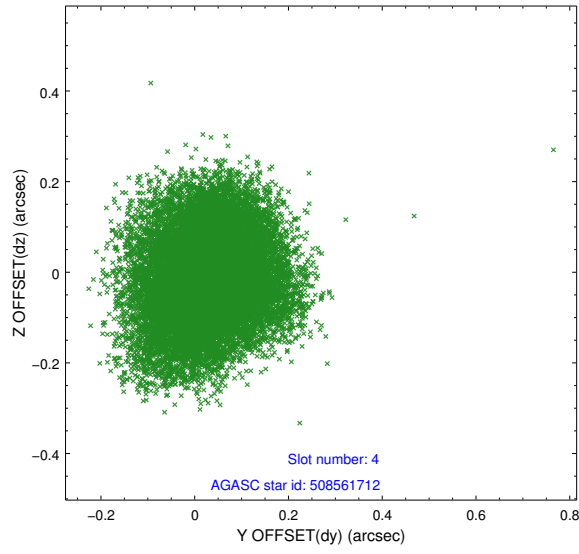
slot	status	id	mag	n_pts	med_dy	med_dz	dr1	dr2	ra	dec	mean_y	mean_z
0	FID	ACIS-S-1	7.01	7363	0.038	-0.031	0.032	0.043	0.000000	0.000000	929.23	-1732.10
1	FID	ACIS-S-4	7.01	7362	0.148	0.009	0.027	0.037	0.000000	0.000000	2146.77	172.03
2	FID	ACIS-S-5	7.03	7363	-0.211	0.035	0.013	0.024	0.000000	0.000000	-1819.81	165.70
3	GUIDE	508561048	8.81	14716	0.020	-0.128	0.084	0.133	242.700055	57.149940	-472.05	-1543.83
4	GUIDE	508561712	9.32	14705	0.031	-0.012	0.138	0.211	242.688354	57.237404	-740.65	-1708.93
5	GUIDE	508565184	8.59	14718	0.039	0.054	0.084	0.130	243.255376	57.325760	-1535.08	-879.63
6	GUIDE	508562184	8.83	14711	-0.030	0.125	0.095	0.147	242.474237	57.452261	-1237.13	-2433.79
7	GUIDE	508559792	8.27	14715	-0.059	-0.034	0.057	0.097	244.189154	57.300019	-2314.13	762.47

## 2.4 Star Slots

### 2.4.1 Slot 3

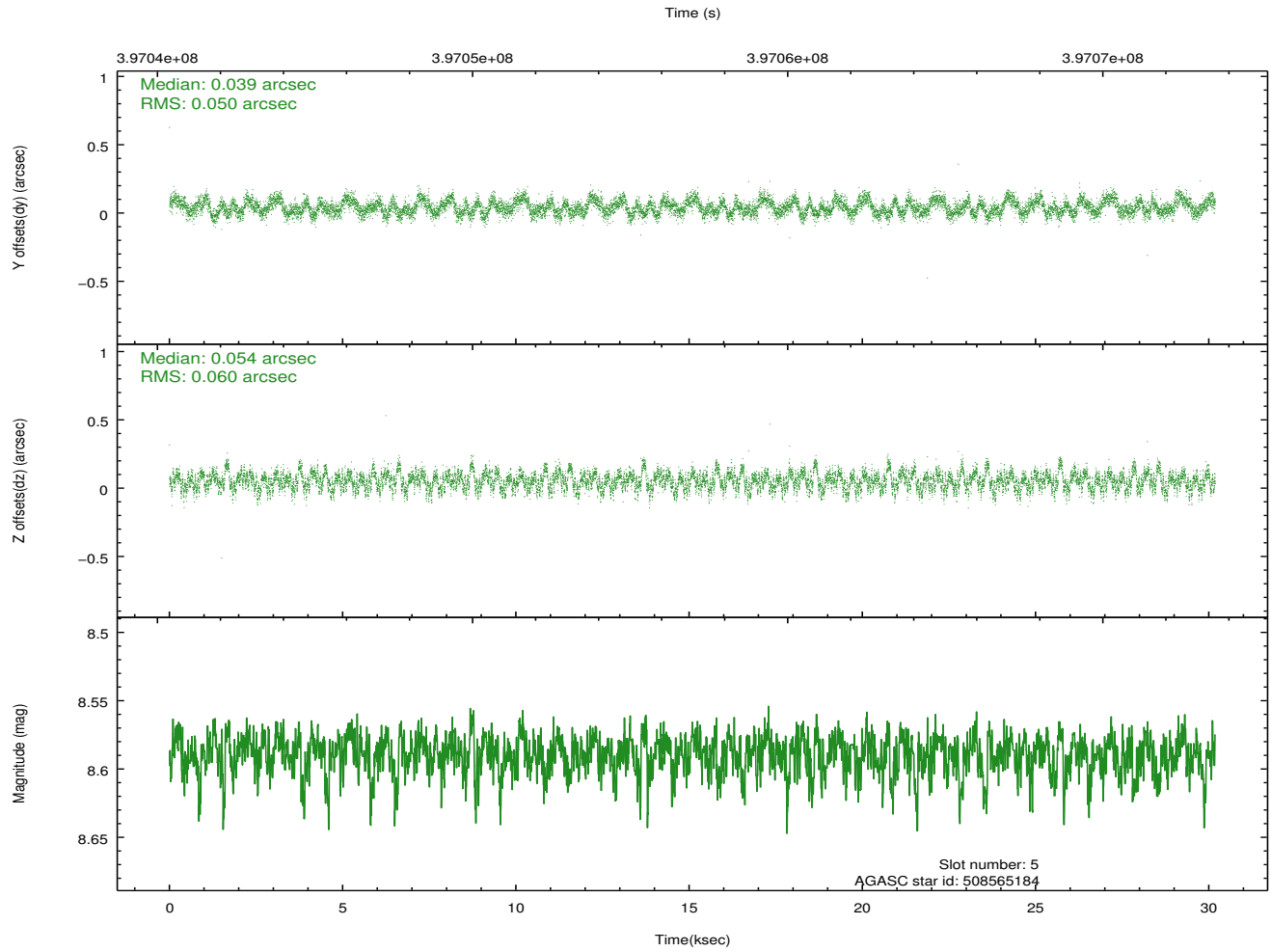
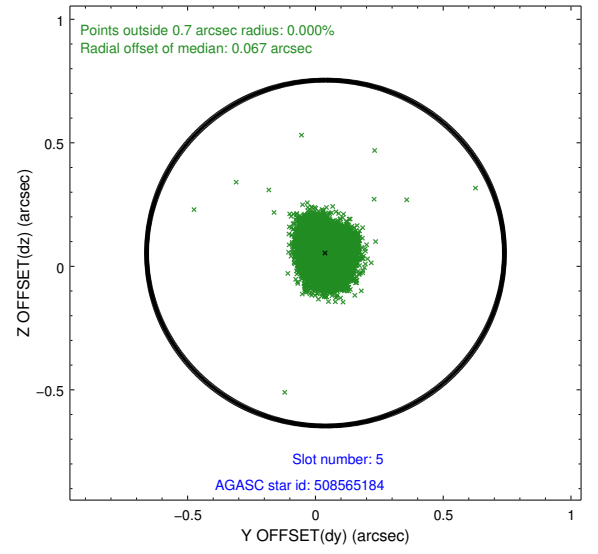
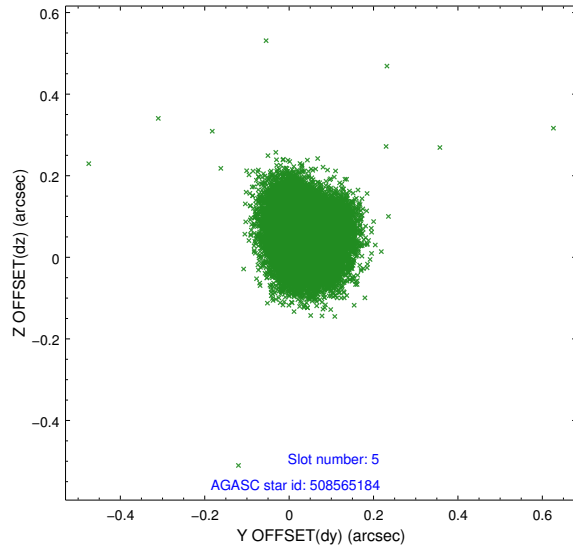


## 2.4.2 Slot 4

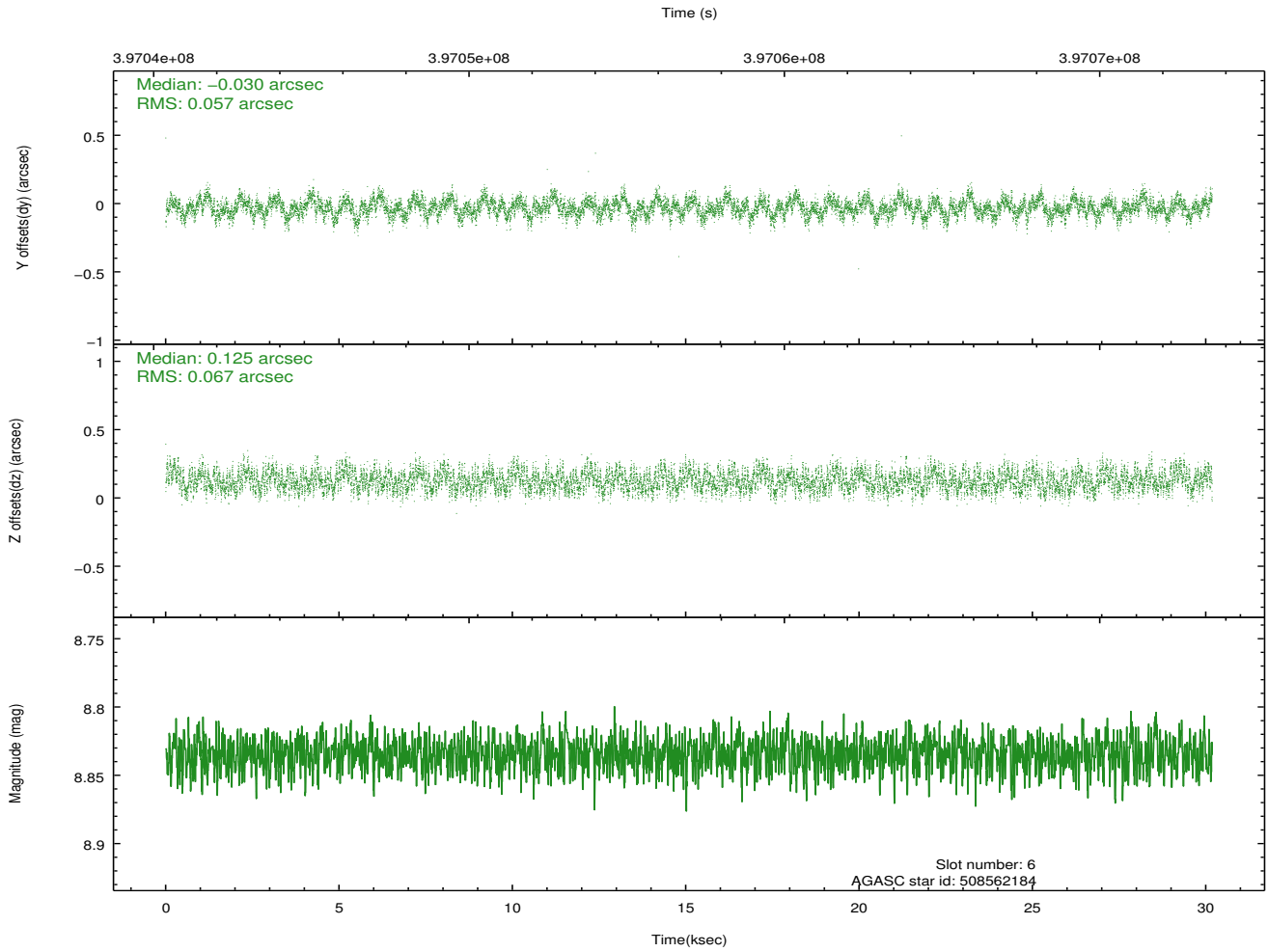
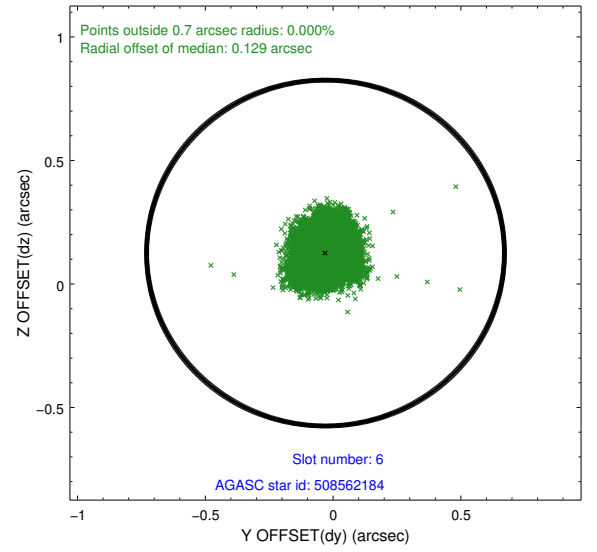
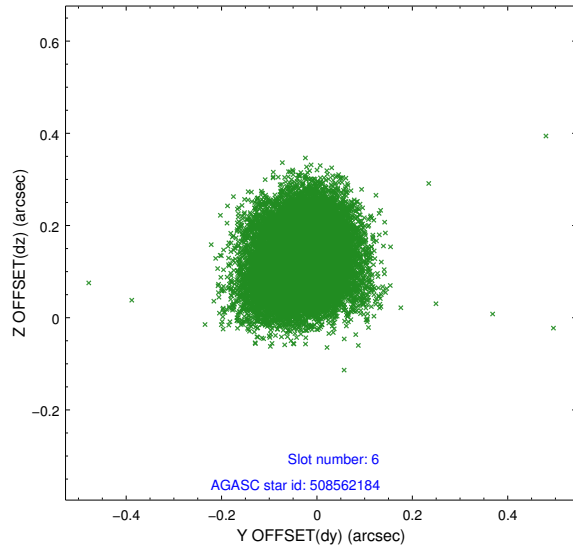




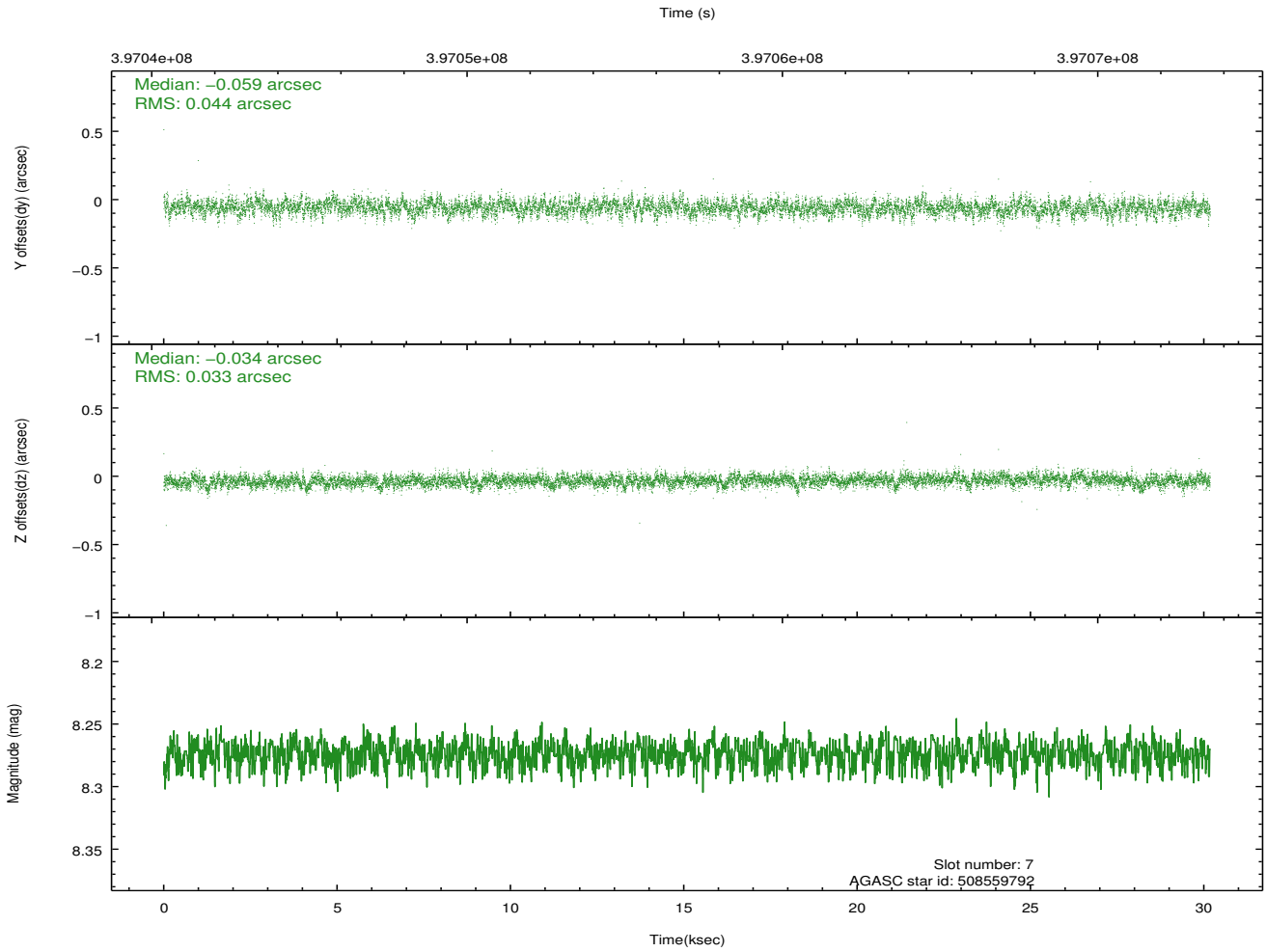
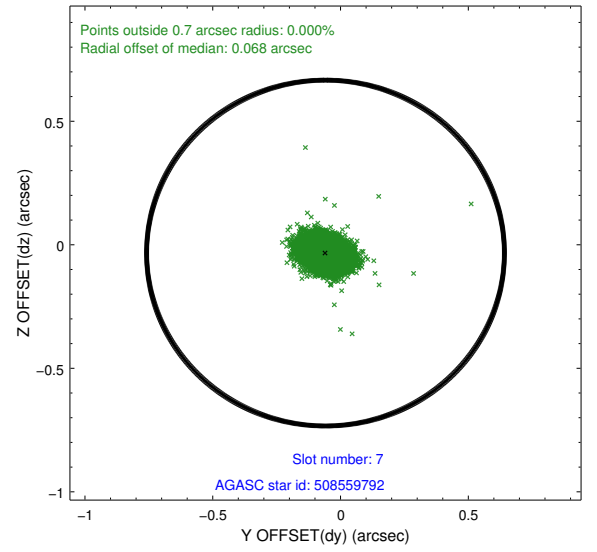
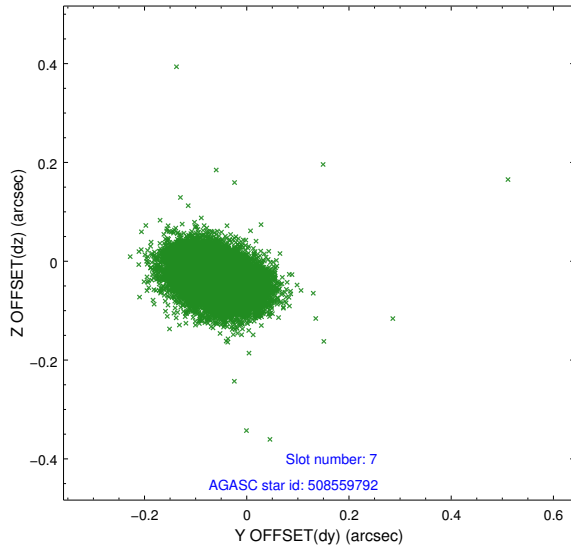
### 2.4.3 Slot 5



## 2.4.4 Slot 6

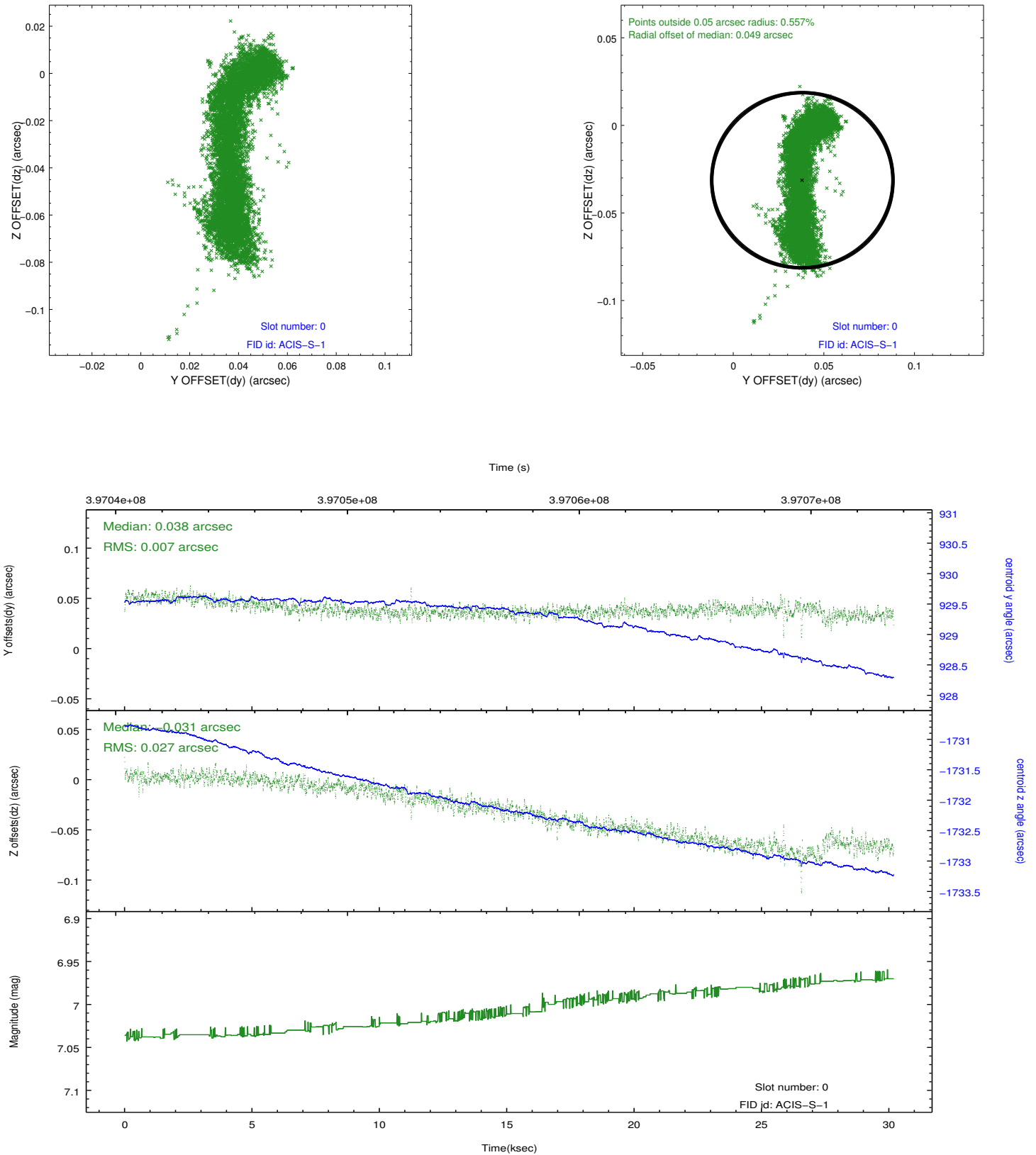


## 2.4.5 Slot 7

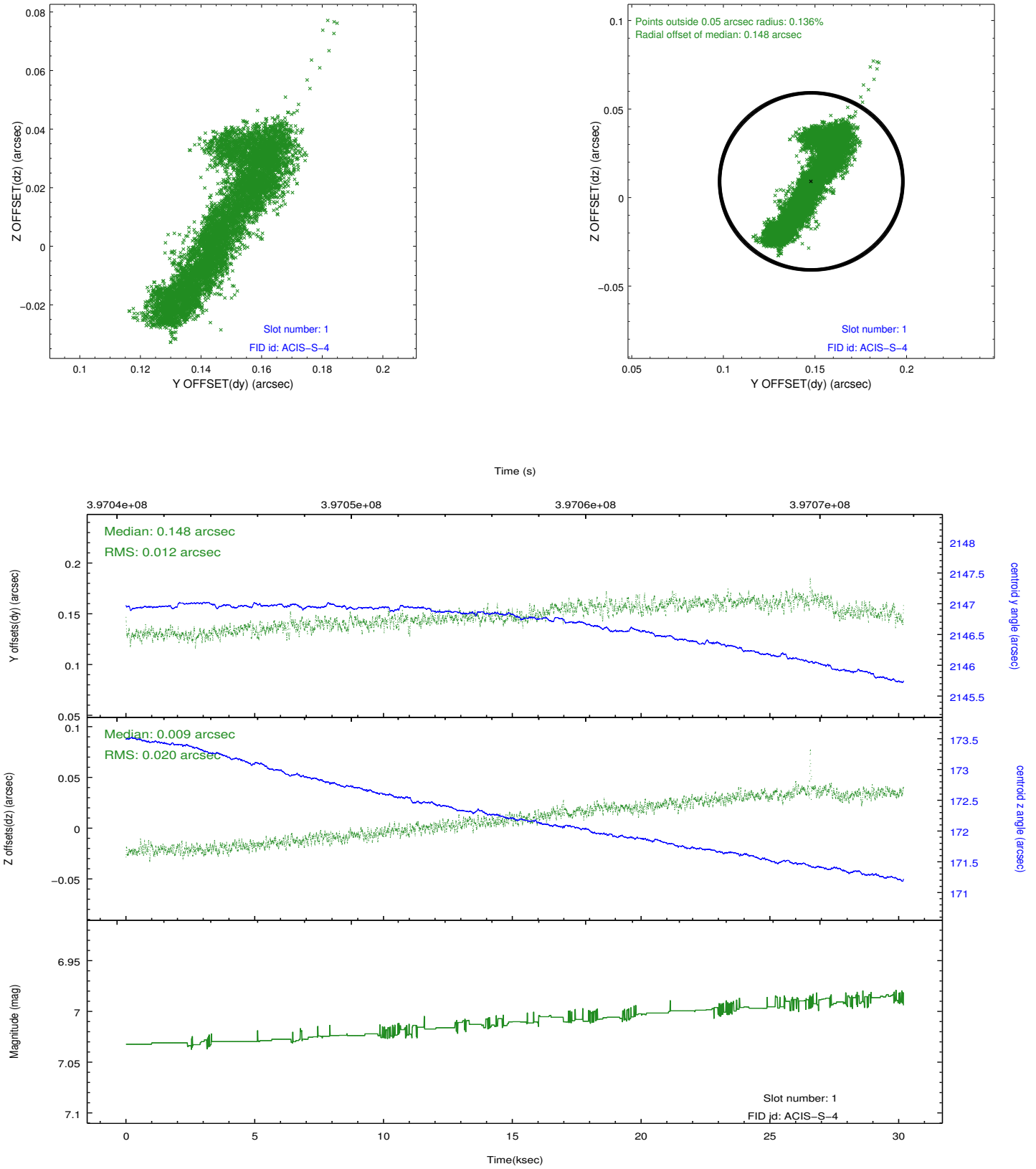


## 2.5 FID Slots

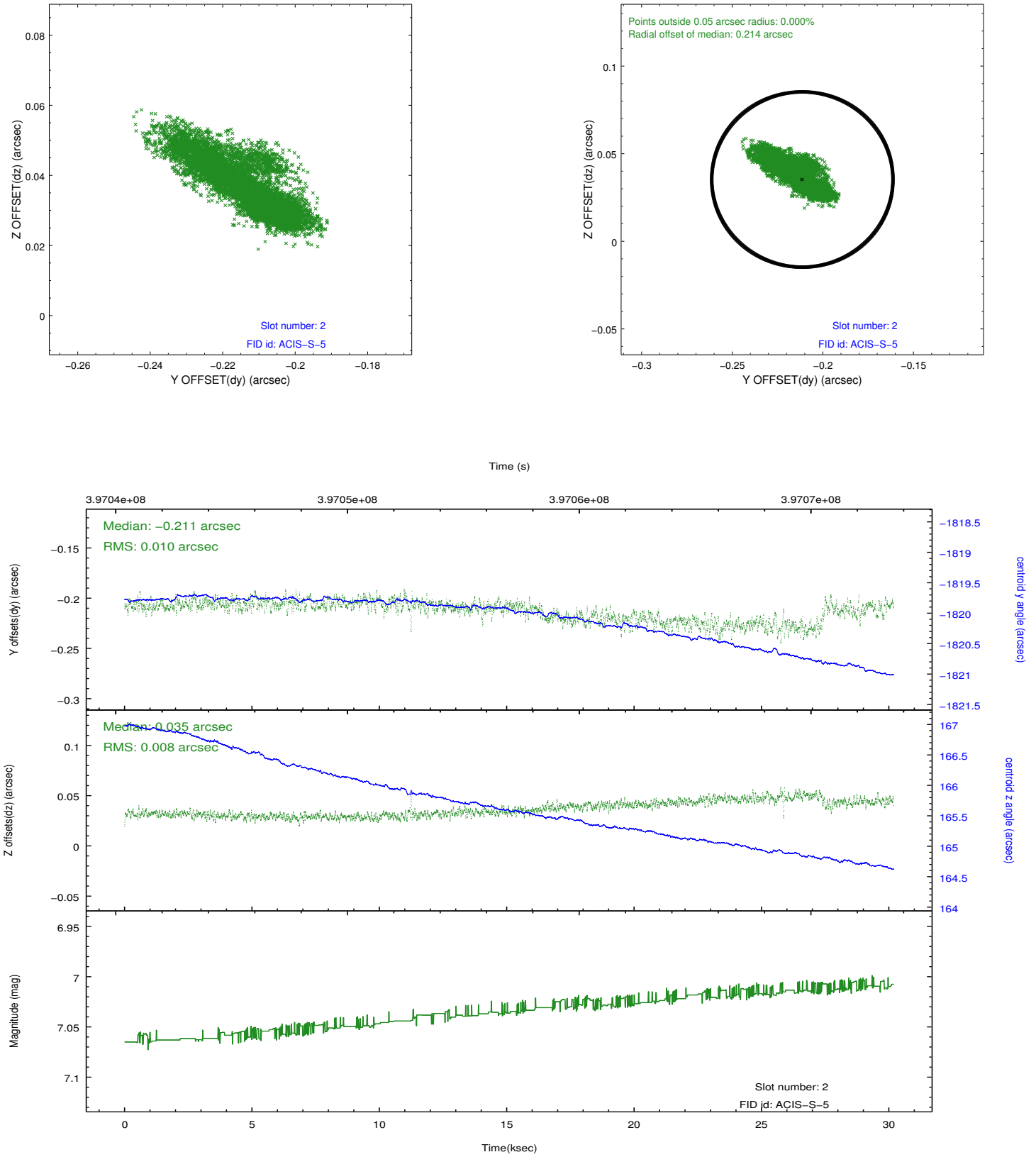
### 2.5.1 Slot 0



## 2.5.2 Slot 1



### 2.5.3 Slot 2



## **A Summary**

### **A.1 Status**

V&V Scientist	Jen Lauer
V&V Date (YYYY-MM-DD)	2012.07.10
V&V Edition	1
V&V Disposition and Status	OK
V&V Charge Time	30.039000231028

### **A.2 Comments**