

# V&V Reference Report

## L2 ASCDS Version : 8.4.5

Observation 11302 - L2 Version 2  
Chandra X-Ray Center

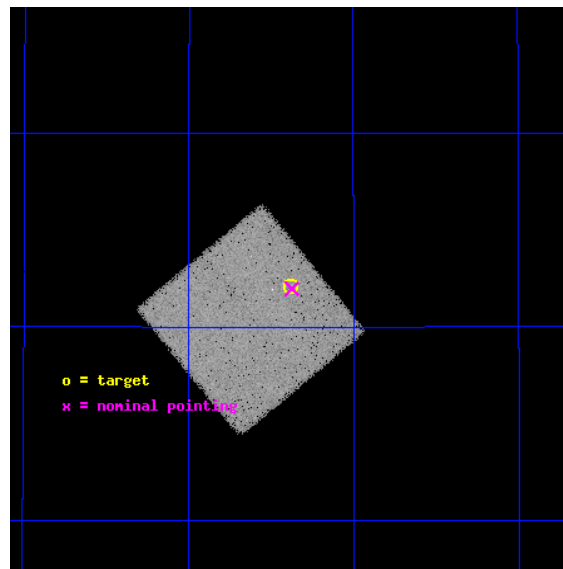
L2 Processing Date : Jun 19 2012

## Contents

<b>1</b>	<b>Front</b>	<b>2</b>
<b>2</b>	<b>OBI</b>	<b>3</b>
2.1	OBI . . . . .	3
2.1.1	Images . . . . .	3
2.1.2	Bias . . . . .	3
2.1.3	Parameters . . . . .	4
2.1.4	Events . . . . .	4
2.2	Compared Parameters . . . . .	5
2.3	Aspect . . . . .	6
2.4	Star Slots . . . . .	9
2.4.1	Slot 3 . . . . .	9
2.4.2	Slot 4 . . . . .	10
2.4.3	Slot 5 . . . . .	11
2.4.4	Slot 6 . . . . .	12
2.4.5	Slot 7 . . . . .	13
2.5	FID Slots . . . . .	14
2.5.1	Slot 0 . . . . .	14
2.5.2	Slot 1 . . . . .	15
2.5.3	Slot 2 . . . . .	16
<b>A</b>	<b>Summary</b>	<b>17</b>
A.1	Status . . . . .	17
A.2	Comments . . . . .	17

# 1 Front

seq_num	600821	Sequence number
obs_id	11302	Observation id
title	Ultra-Luminous x-Ray Sources in the Most Metal-Poor Galaxies	Propo
observer	Dr Andrea Prestwich	Principal investigator
object	KUG 0942+551	Source name
dtcycle	0	&#160
cycle	P	events from which exps? Prim/Second/Both
ra_targ	146.595	Observer's specified target RA [deg]
dec_targ	54.868972	Observer's specified target Dec [deg]
ra_nom	146.59341653169	Nominal RA [deg]
dec_nom	54.866426290038	Nominal Dec [deg]
roll_nom	140.51658189701	Nominal Roll [deg]
revision	2	Processing version of data
ontime	16238.768254042	Sum of GTIs [s]
livetime	16019.619854433	Livetime [s]
ontime7	16238.768254042	Sum of GTIs [s]
l2events	72437	Number of level 2 events

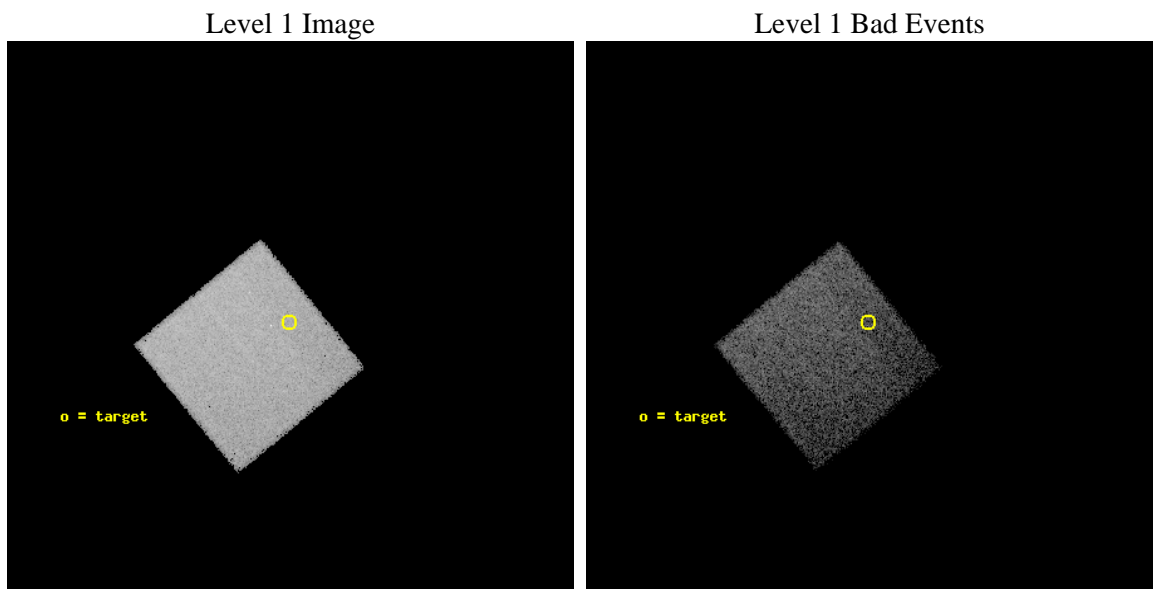




## 2 OBI

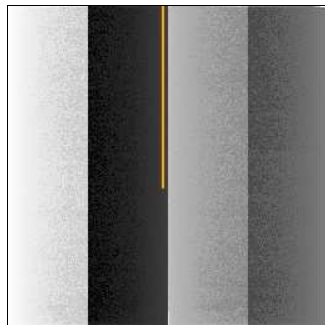
### 2.1 OBI

#### 2.1.1 Images



#### 2.1.2 Bias

Chip 7



### 2.1.3 Parameters

obi_num	0	Obi number	sched_exp_time	16395.000000	[s] Scheduled observation exposure time
ascdsver	8.4.5	Processing system revision	ontime	16238.768254042	Sum of GTIs [s]
caldsver	4.4.10	&#160	ontime7	16238.768254042	Sum of GTIs [s]
date	2012-06-19T22:32:50	Date and time of file creation	l1events	161020	Number of level 1 events
revision	2	Processing version of data			

### 2.1.4 Events

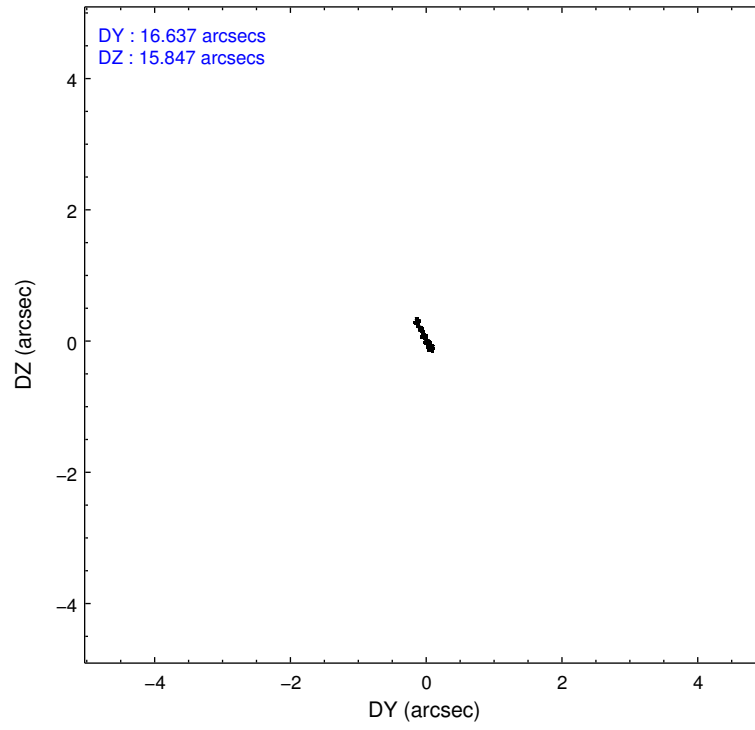
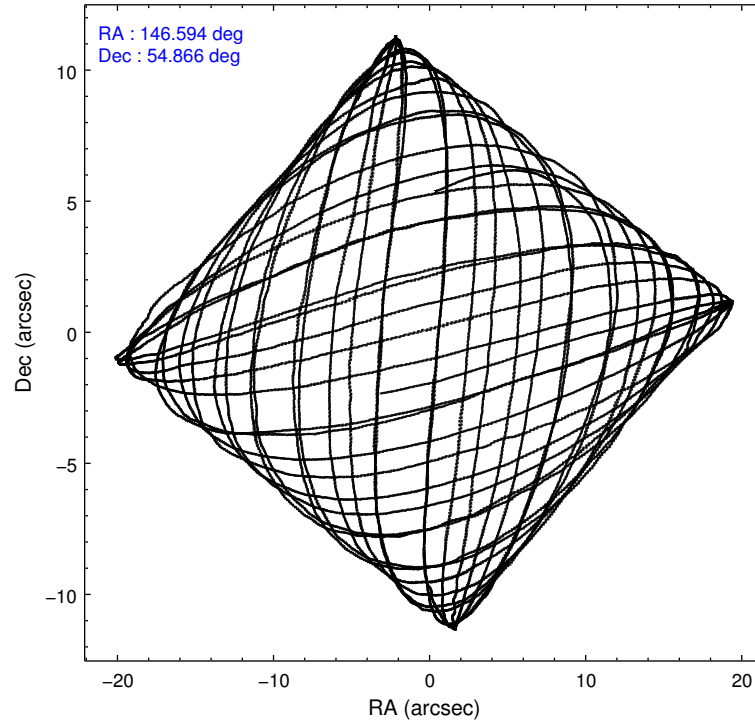
	<b>ccd 7</b>
level 1 events	161020
rejected events	86544
rejected %	53%

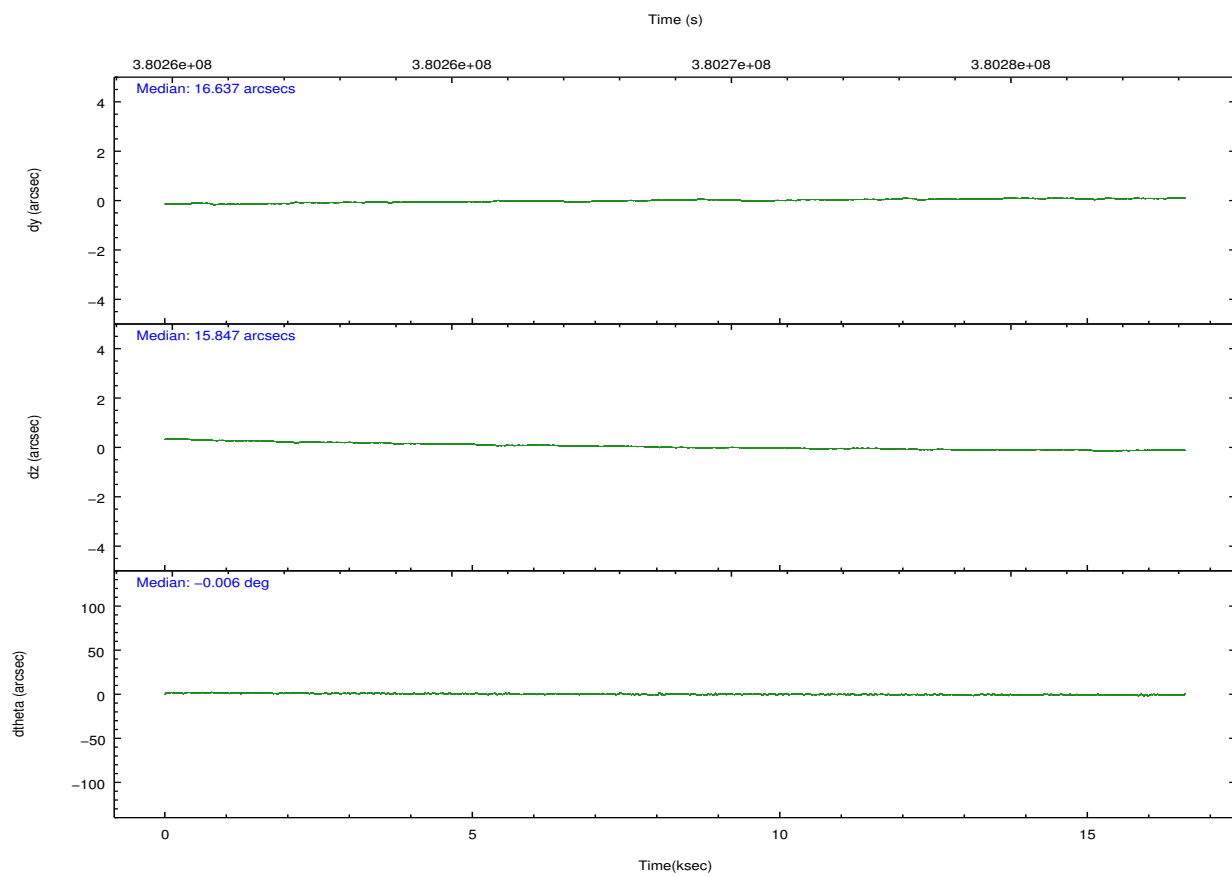
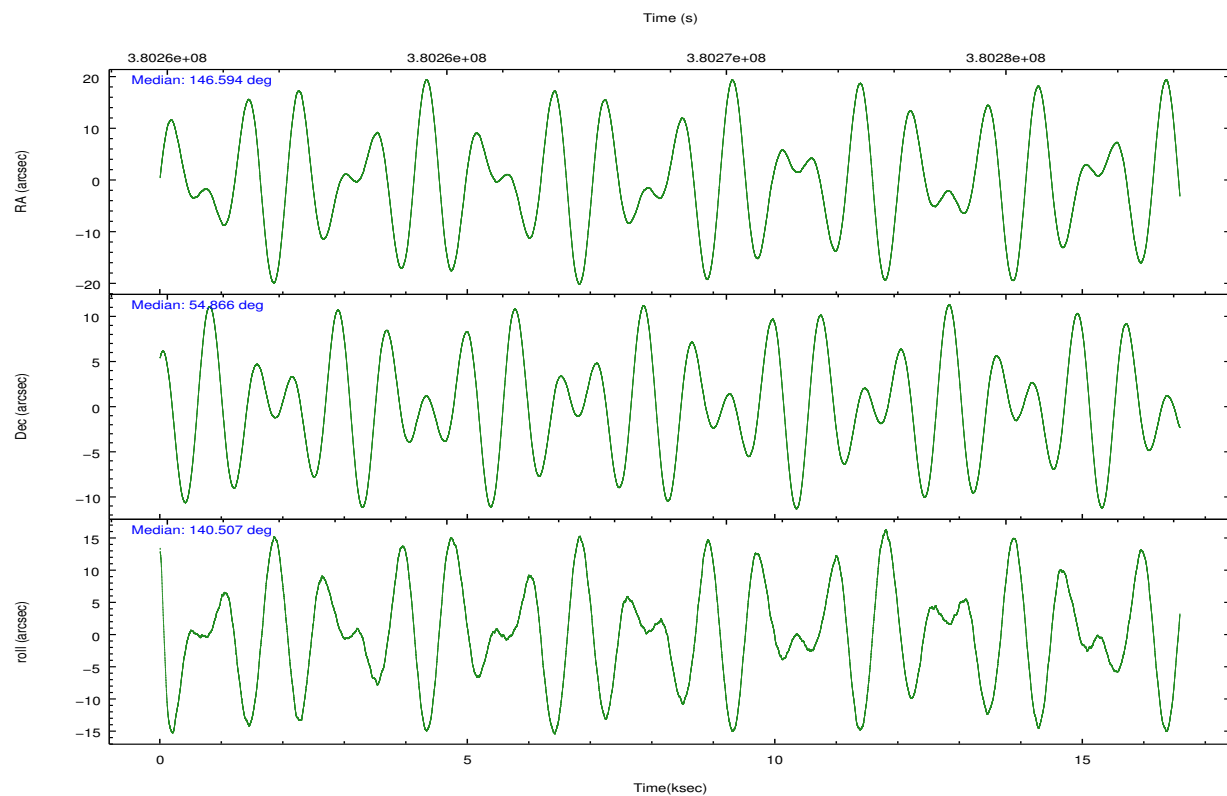
	<b>ccd 7</b>
grade 0 events	6936
	4%
grade 1 events	206
	0%
grade 2 events	15248
	9%
grade 3 events	6975
	4%
grade 4 events	6635
	4%
grade 5 events	16968
	10%
grade 6 events	38697
	24%
grade 7 events	69355
	43%

## 2.2 Compared Parameters

Parameter	Planned	Actual	Parameter	Planned	Actual
Instrument	ACIS	ACIS	Obspar format version number	7	7
Detector	ACIS-7	ACIS-7	Obspar file type	PREDICTED	ACTUAL
Grating	NONE	NONE	Obspar update status	NONE	UPDATED
Data mode	VFAINT	VFAINT	Number of optional ACIS chips dropped	0	0
Observation mode	POINTING	POINTING	On-chip summing requested	N	N
[deg] Pointing RA	146.640303	146.5934165316855	Subarray requested	NONE	NONE
[deg] Pointing Dec	54.862285	54.86642629003785	Alternating exposures requested	N	N
[deg] Pointing Roll	140.321613	140.5165818970091	[s] Primary exposure time	0.000000	3
[mm] SIM focus pos	-0.684267	-0.6828225247311905			
[mm] SIM defocus	0	0.001444936568705701			
[mm] SIM translation stage pos	-190.132523	-190.1400660498719			
[mm] SIM translation stage offset	0	0.00754346686406393			
[s] Observation start time (MET)	380260896.184000	380260518.35357			
Observation start date	2010-01-19T04:00:30	2010-01-19T03:55:18			
[s] Observation end time (MET)	380277291.184000	380277949.50445			
Observation end date	2010-01-19T08:33:45	2010-01-19T08:45:49			
Read mode	TIMED	TIMED			

## 2.3 Aspect



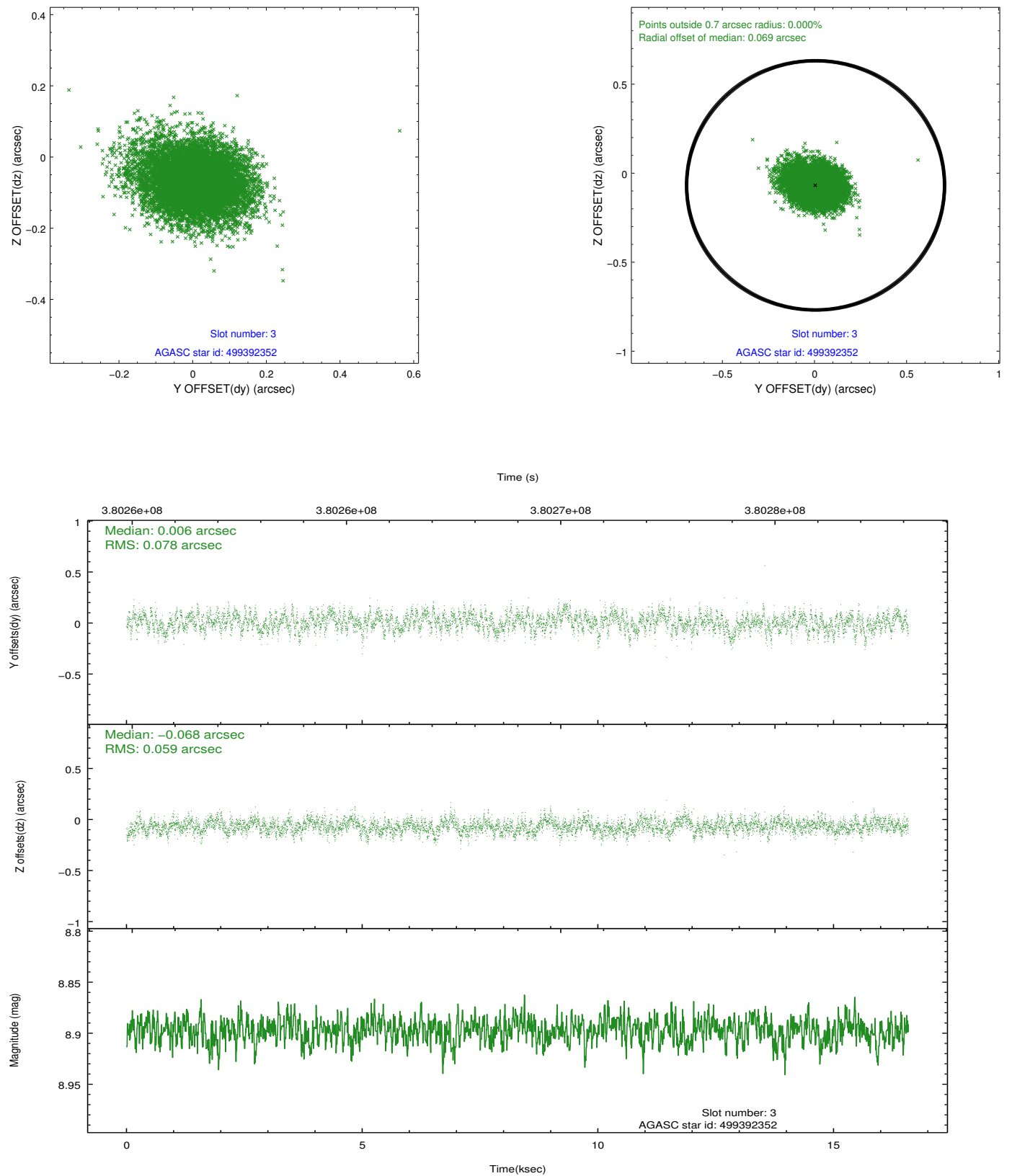


### Slot Statistics

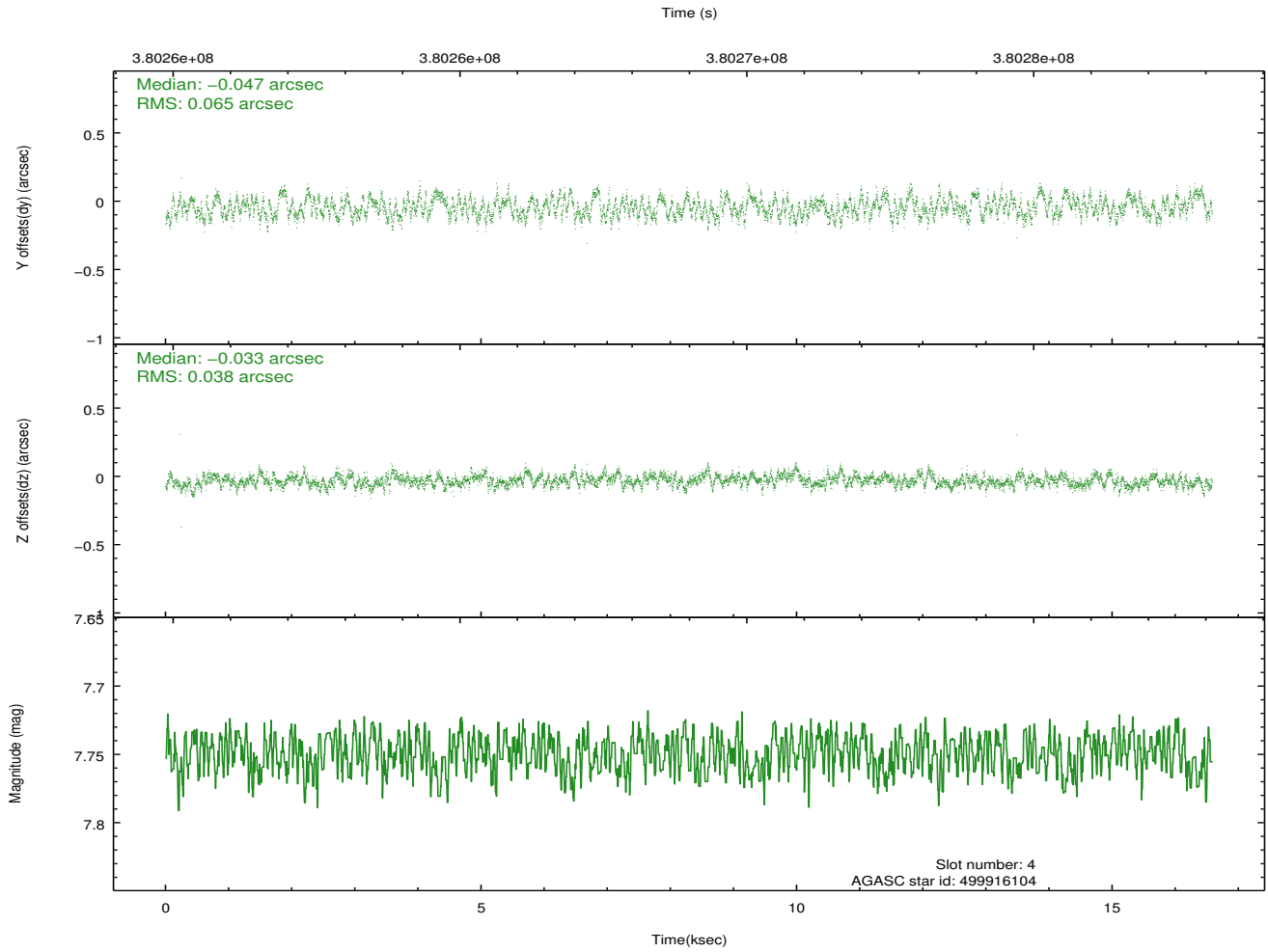
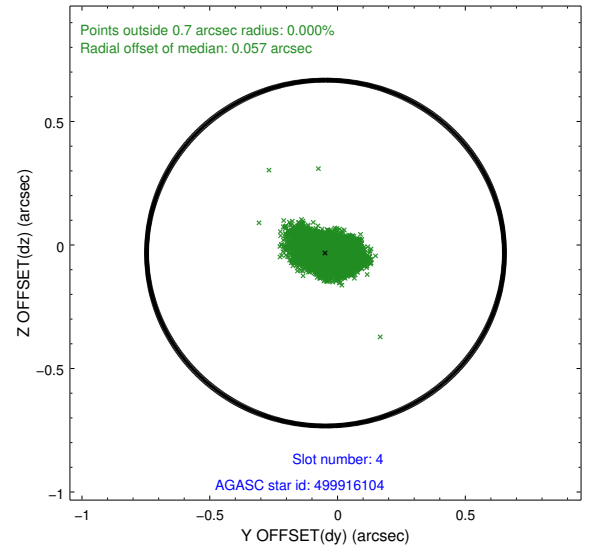
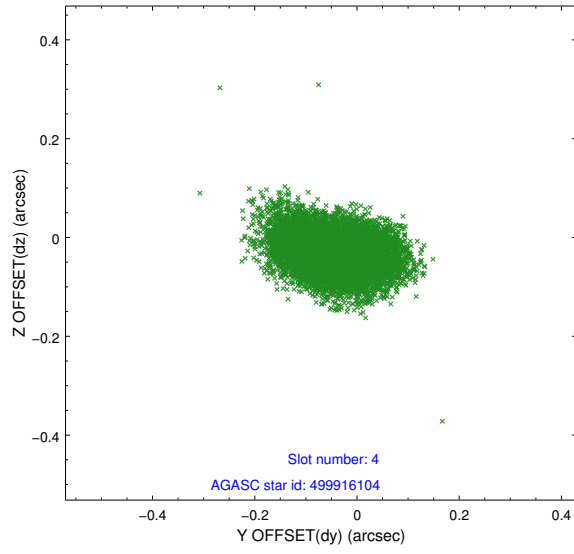
slot	status	id	mag	n_pts	med_dy	med_dz	dr1	dr2	ra	dec	mean_y	mean_z
0	FID	ACIS-S-1	6.97	4045	0.045	-0.082	0.012	0.024	0.000000	0.000000	926.44	-1733.00
1	FID	ACIS-S-4	6.98	4045	0.139	0.039	0.009	0.015	0.000000	0.000000	2144.07	171.02
2	FID	ACIS-S-5	7.02	4045	-0.212	0.055	0.011	0.021	0.000000	0.000000	-1822.37	164.88
3	GUIDE	499392352	8.90	8079	0.006	-0.068	0.102	0.169	146.511082	55.750002	2242.72	-2291.80
4	GUIDE	499916104	7.75	8090	-0.047	-0.033	0.080	0.128	147.143721	54.264909	-2184.67	976.73
5	GUIDE	500313056	7.92	8086	-0.051	0.014	0.066	0.111	147.228953	55.127825	-318.75	-1512.74
6	GUIDE	500314232	9.40	8076	0.096	0.143	0.128	0.196	147.513780	55.089903	-854.41	-1787.89
7	GUIDE	499915672	9.36	8054	0.003	-0.062	0.108	0.179	146.937005	54.495310	-1320.39	620.64

## 2.4 Star Slots

### 2.4.1 Slot 3

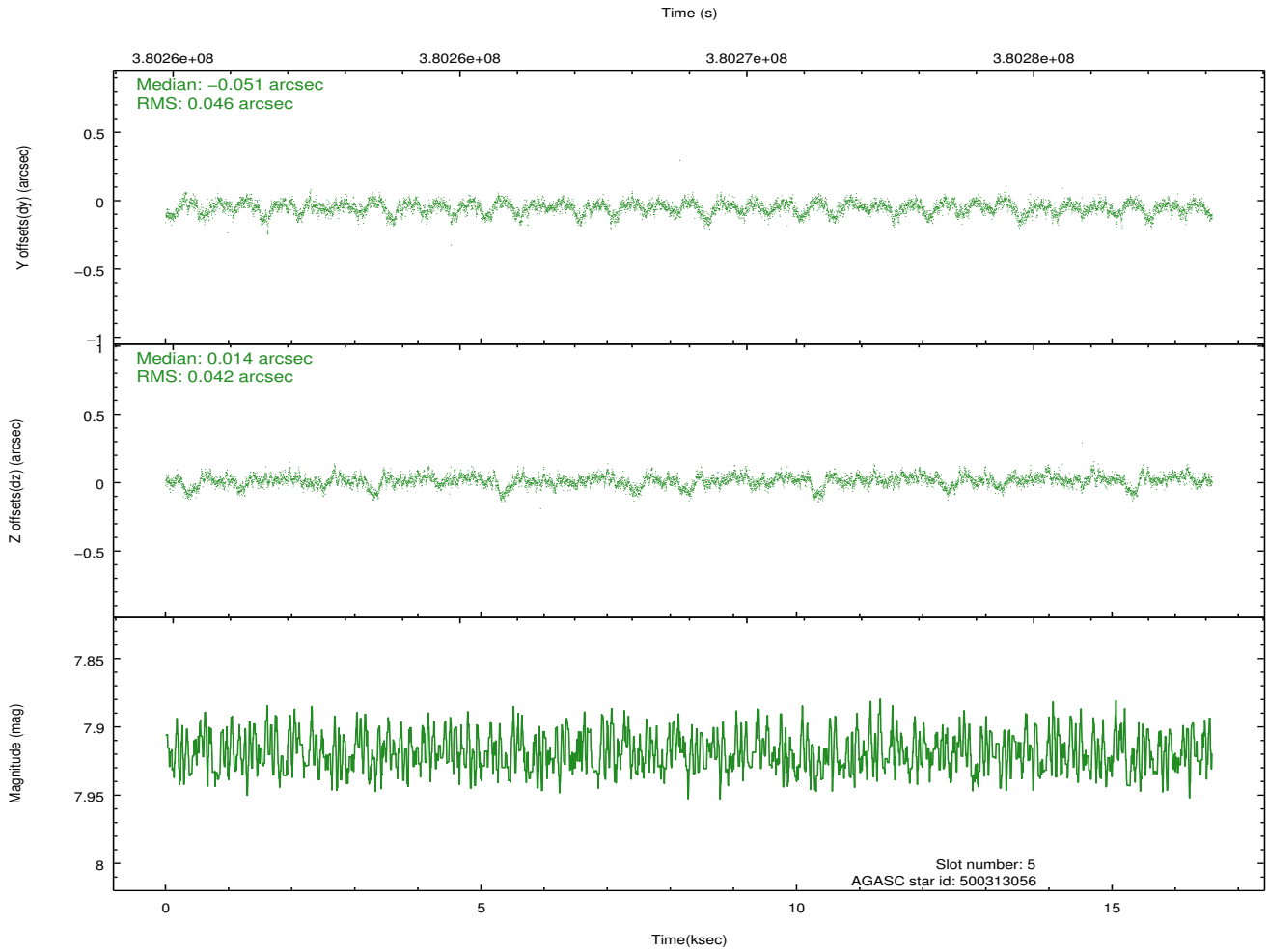
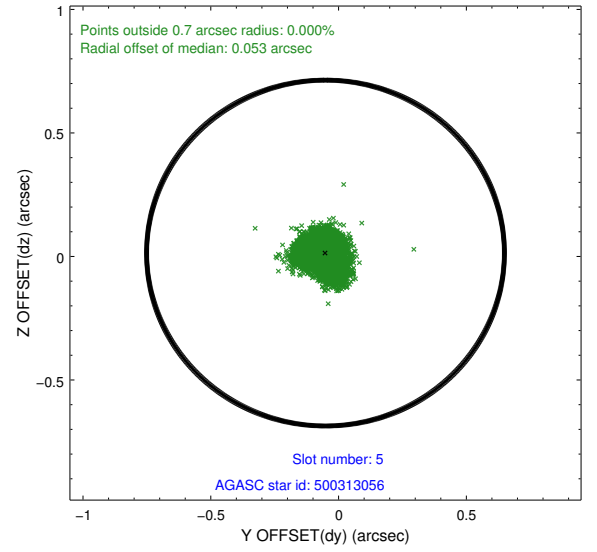
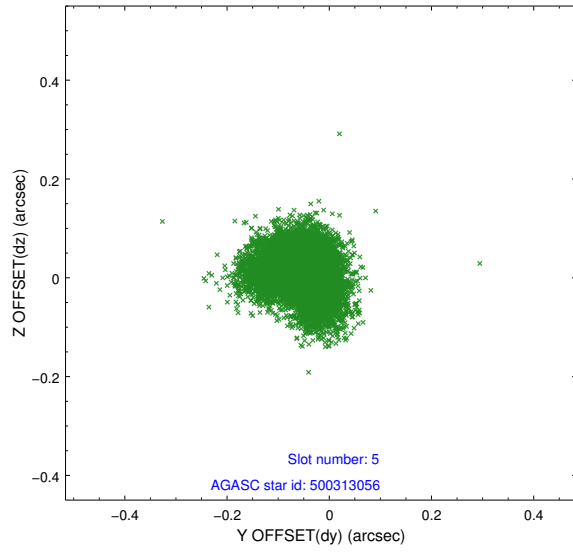


## 2.4.2 Slot 4

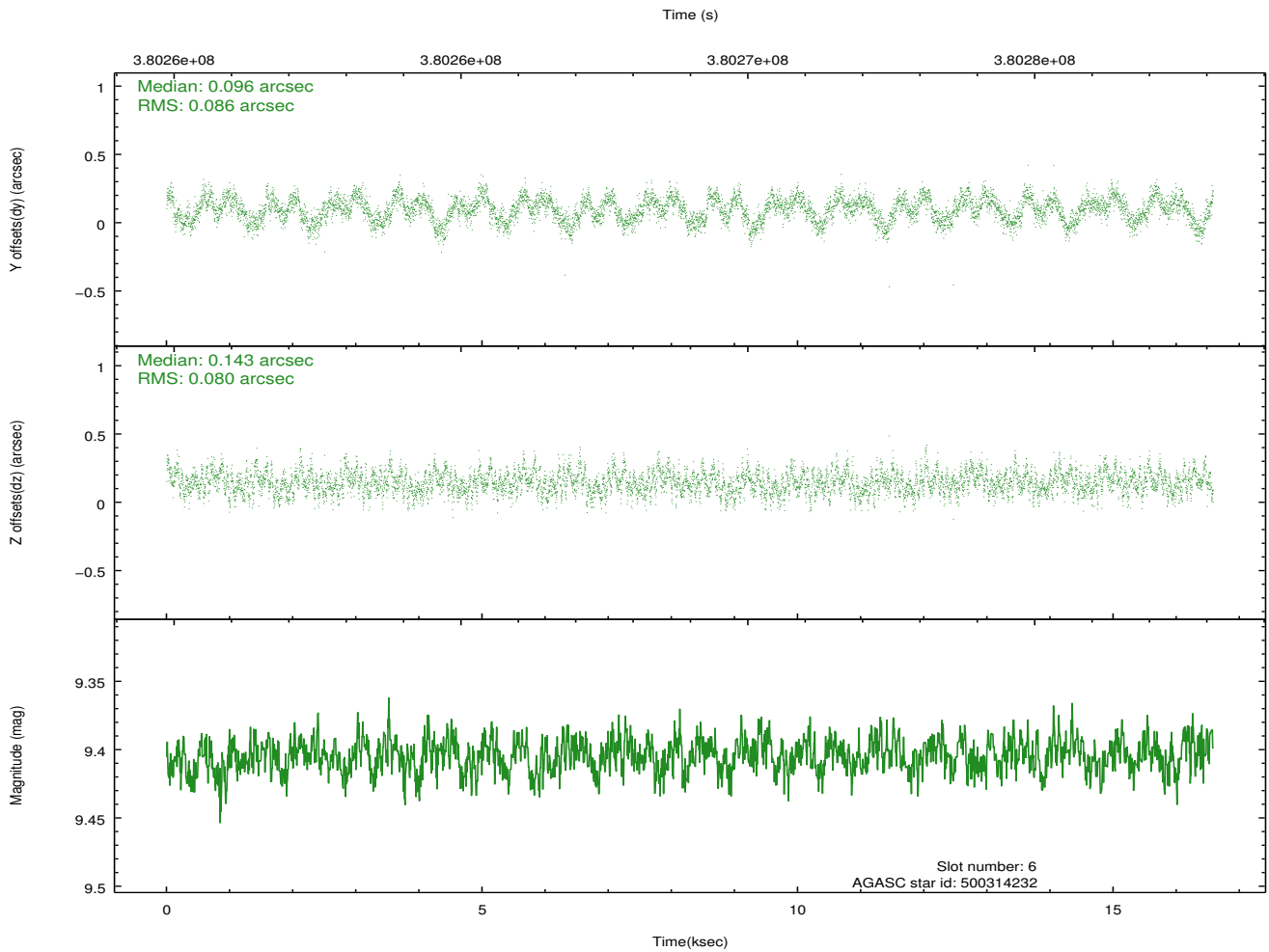
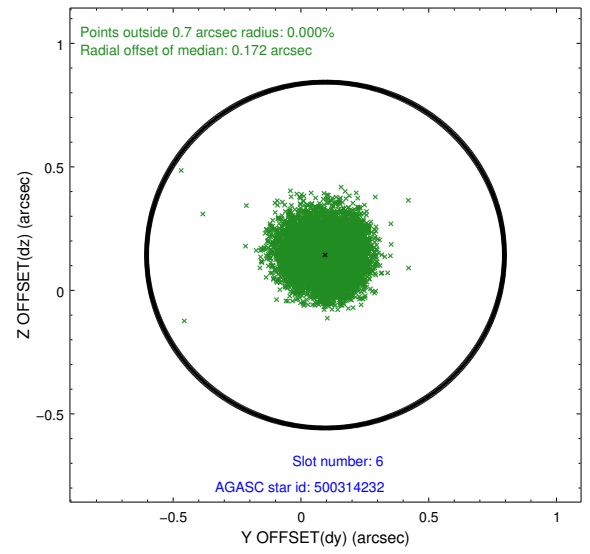
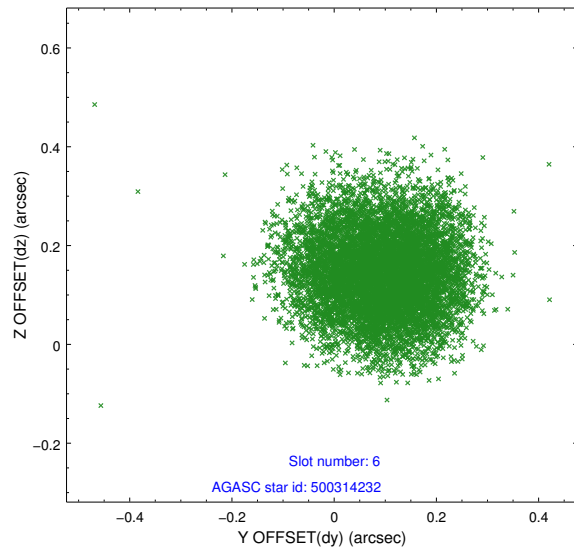




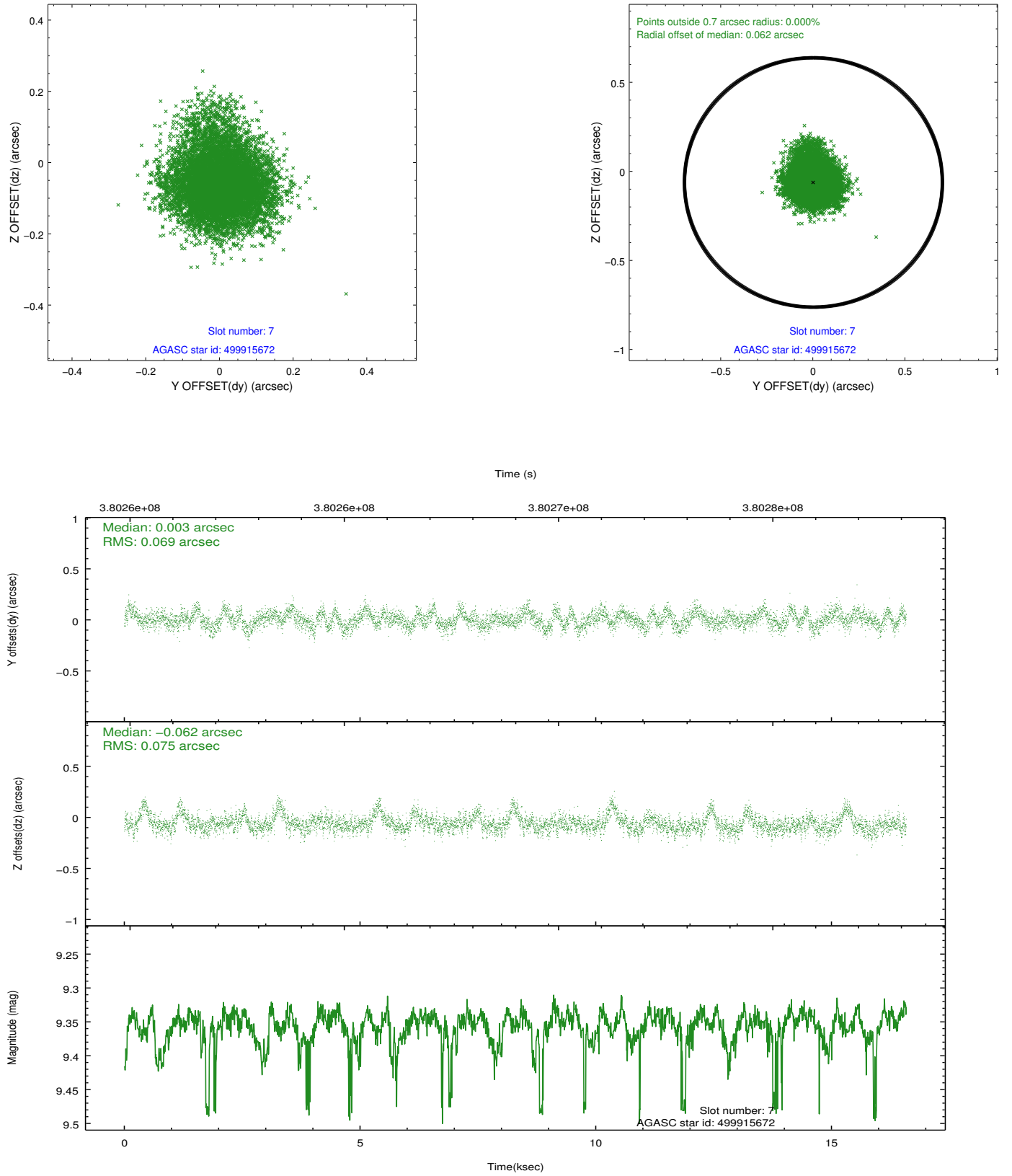
### 2.4.3 Slot 5



## 2.4.4 Slot 6

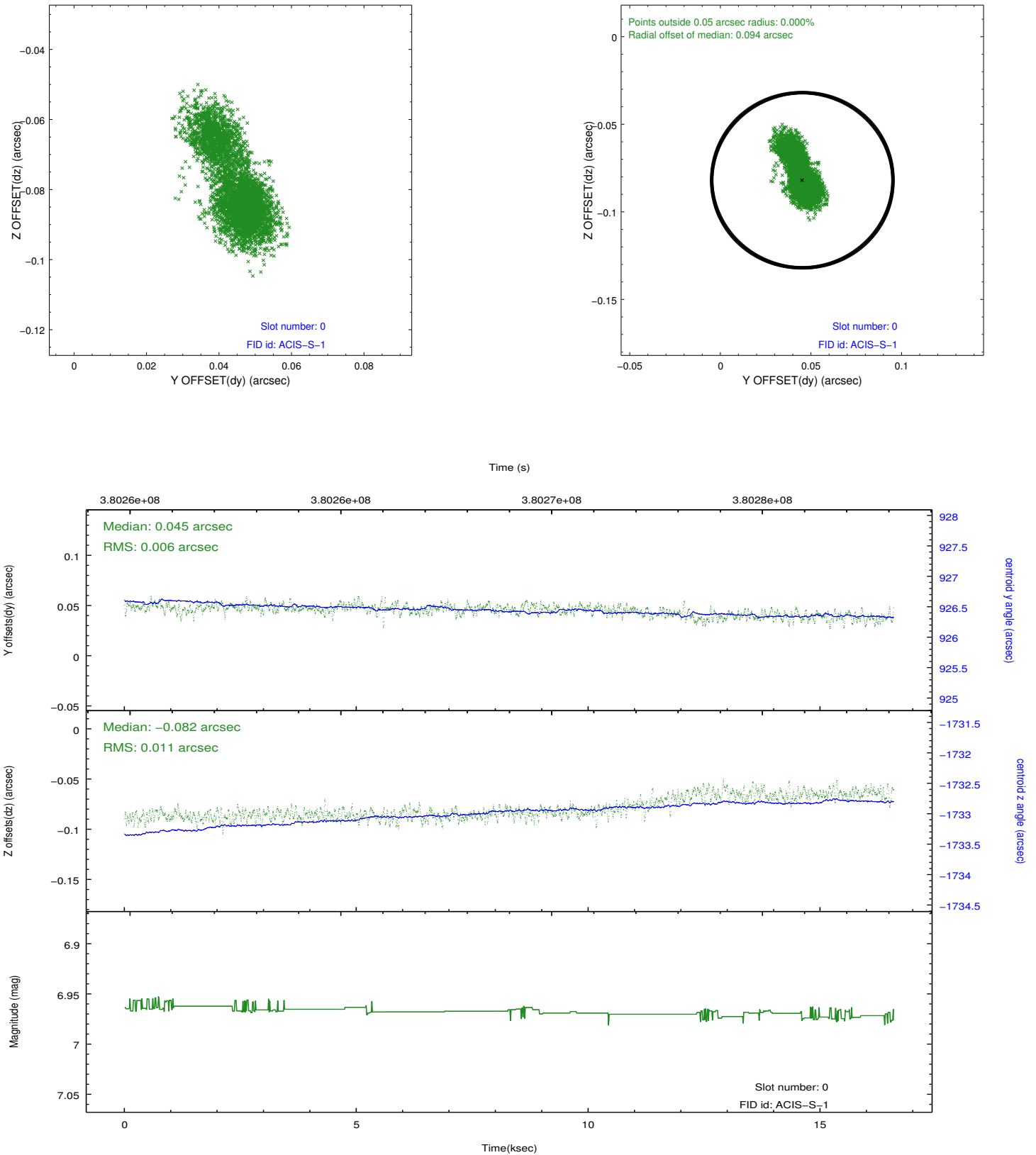


## 2.4.5 Slot 7

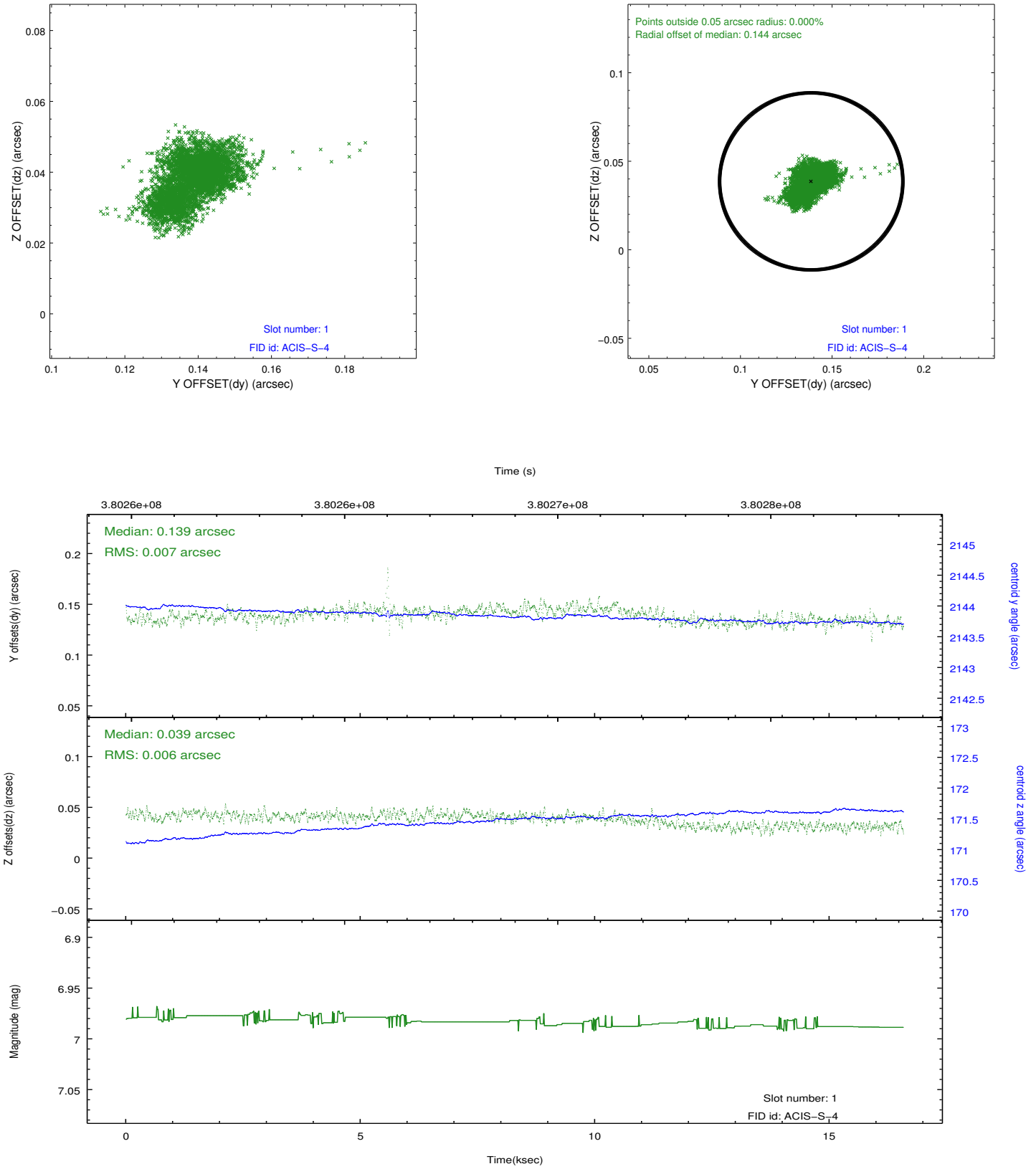


## 2.5 FID Slots

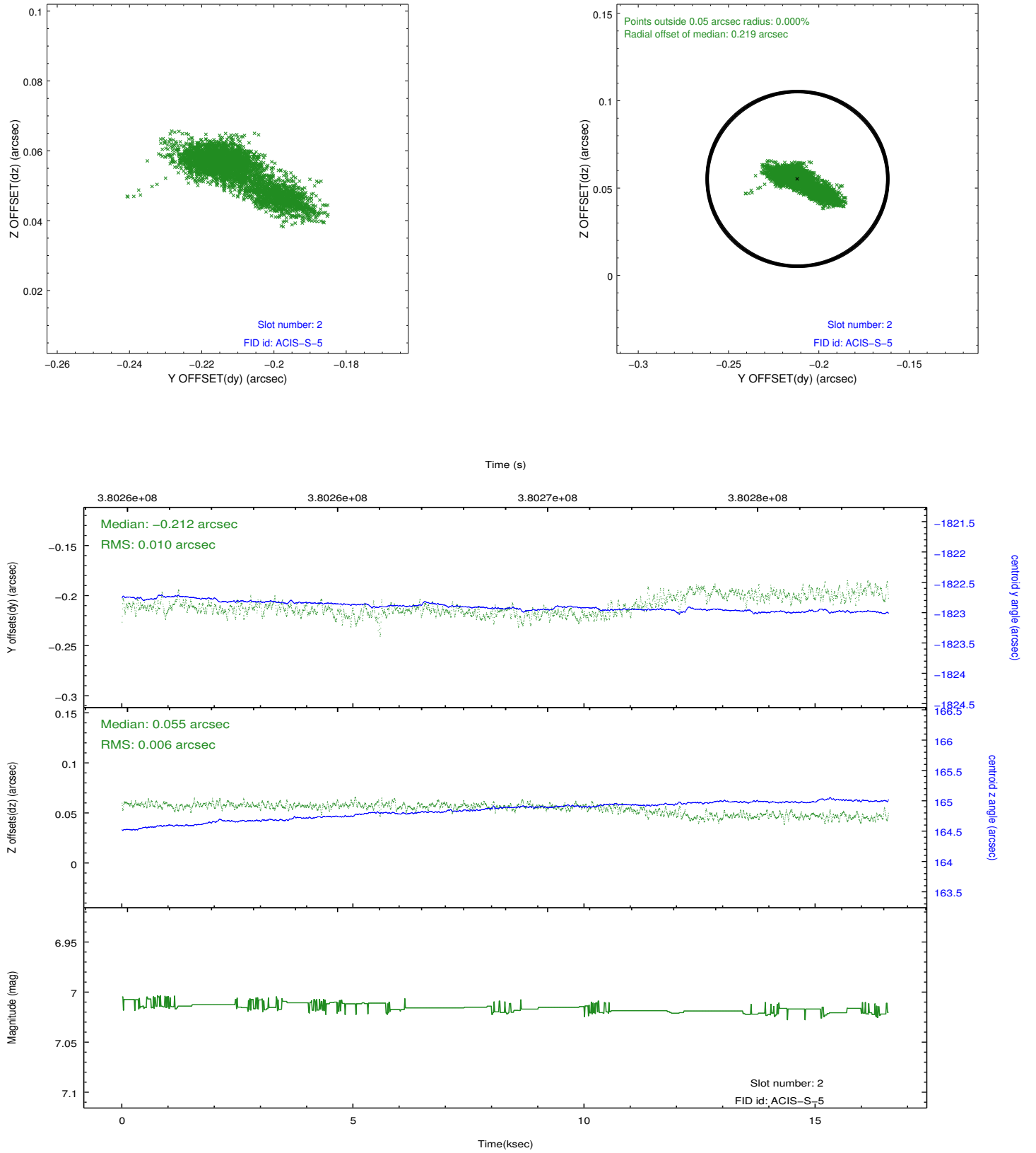
### 2.5.1 Slot 0



## 2.5.2 Slot 1



### 2.5.3 Slot 2



# A Summary

## A.1 Status

V&V Scientist	Jen Lauer
V&V Date (YYYY-MM-DD)	2012.06.25
V&V Edition	1
V&V Disposition and Status	OK
V&V Charge Time	16.238768253863

## A.2 Comments

Joint Proposal: HST