

V&V Reference Report

L2 ASCDS Version : 8.4.5

Observation 11082 - L2 Version 2
Chandra X-Ray Center

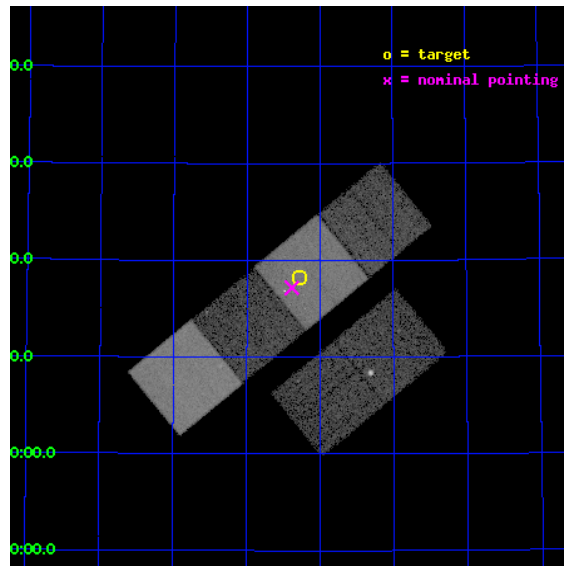
L2 Processing Date : Jun 21 2012

Contents

1	Front	2
2	OBI	3
2.1	OBI	3
2.1.1	Images	3
2.1.2	Bias	3
2.1.3	Parameters	4
2.1.4	Events	4
2.2	Compared Parameters	5
2.3	Aspect	6
2.4	Star Slots	9
2.4.1	Slot 3	9
2.4.2	Slot 4	10
2.4.3	Slot 5	11
2.4.4	Slot 6	12
2.4.5	Slot 7	13
2.5	FID Slots	14
2.5.1	Slot 0	14
2.5.2	Slot 1	15
2.5.3	Slot 2	16
A	Summary	17
A.1	Status	17
A.2	Comments	17

1 Front

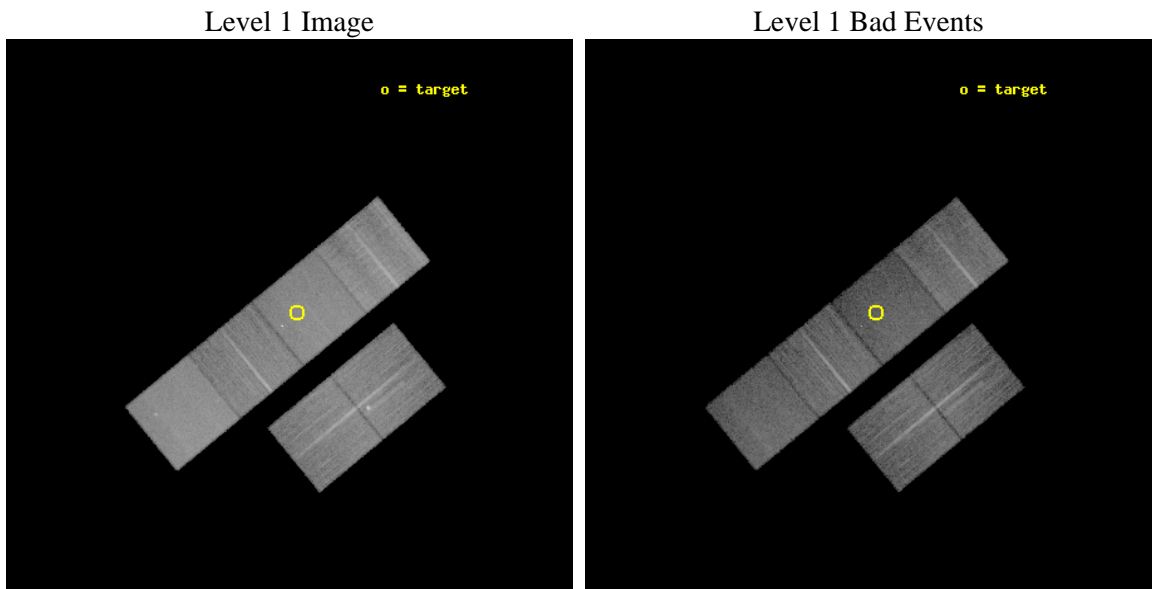
seq_num	401117	Sequence number
obs_id	11082	Observation id
title	X-Ray Binaries In a Nearby Star-Burst Galaxy: A New Lab for Astrophysics.	Proposal title
observer	Dr Silas Laycock	Principal investigator
object	IC 10	Source name
dtcycle	0	
cycle	P	events from which exps? Prim/Second/Both
ra_targ	5.072083	Observer's specified target RA [deg]
dec_targ	59.303778	Observer's specified target Dec [deg]
ra_nom	5.096215081551	Nominal RA [deg]
dec_nom	59.286098527792	Nominal Dec [deg]
roll_nom	320.5601653208	Nominal Roll [deg]
revision	2	Processing version of data
ontime	15046.399944007	Sum of GTIs [s]
livetime	14855.873368062	Livetime [s]
ontime2	15043.158973753	Sum of GTIs [s]
ontime3	15046.399944007	Sum of GTIs [s]
ontime5	15046.399944007	Sum of GTIs [s]
ontime6	15046.399944007	Sum of GTIs [s]
ontime7	15046.399944007	Sum of GTIs [s]
ontime8	15046.399944007	Sum of GTIs [s]
l2events	198314	Number of level 2 events



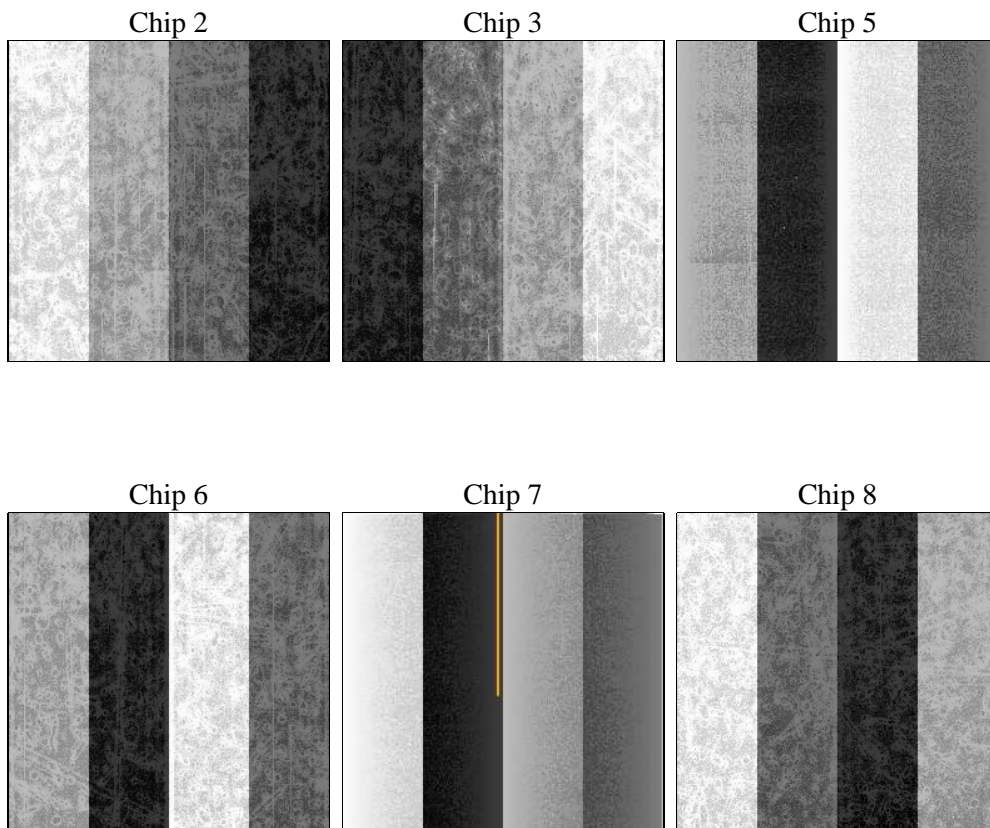
2 OBI

2.1 OBI

2.1.1 Images



2.1.2 Bias



2.1.3 Parameters

obi_num	0	Obi number	sched_exp_time	15000.000000	[s] Scheduled observation exposure time
ascdsver	8.4.5	Processing system revision	ontime	15046.399944007	Sum of GTIs [s]
caldsver	4.4.10	 	ontime2	15043.158973753	Sum of GTIs [s]
date	2012-06-21T02:30:01	Date and time of file creation	ontime3	15046.399944007	Sum of GTIs [s]
revision	2	Processing version of data	ontime5	15046.399944007	Sum of GTIs [s]
			ontime6	15046.399944007	Sum of GTIs [s]
			ontime7	15046.399944007	Sum of GTIs [s]
			ontime8	15046.399944007	Sum of GTIs [s]
			l1events	855284	Number of level 1 events

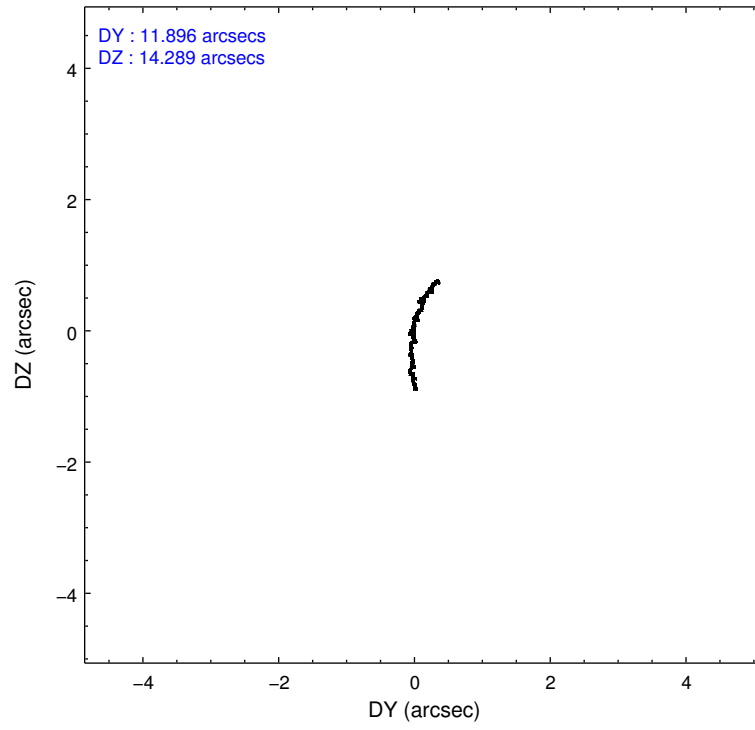
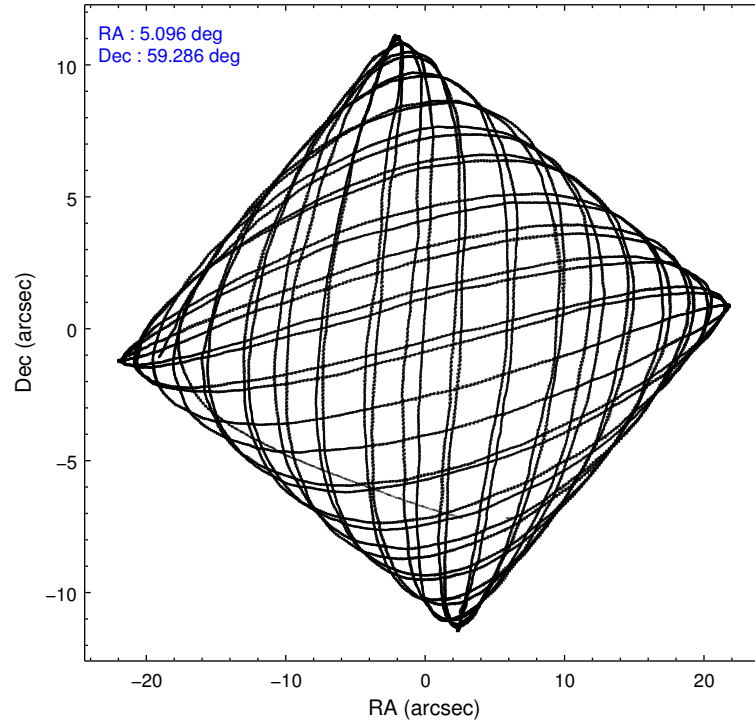
2.1.4 Events

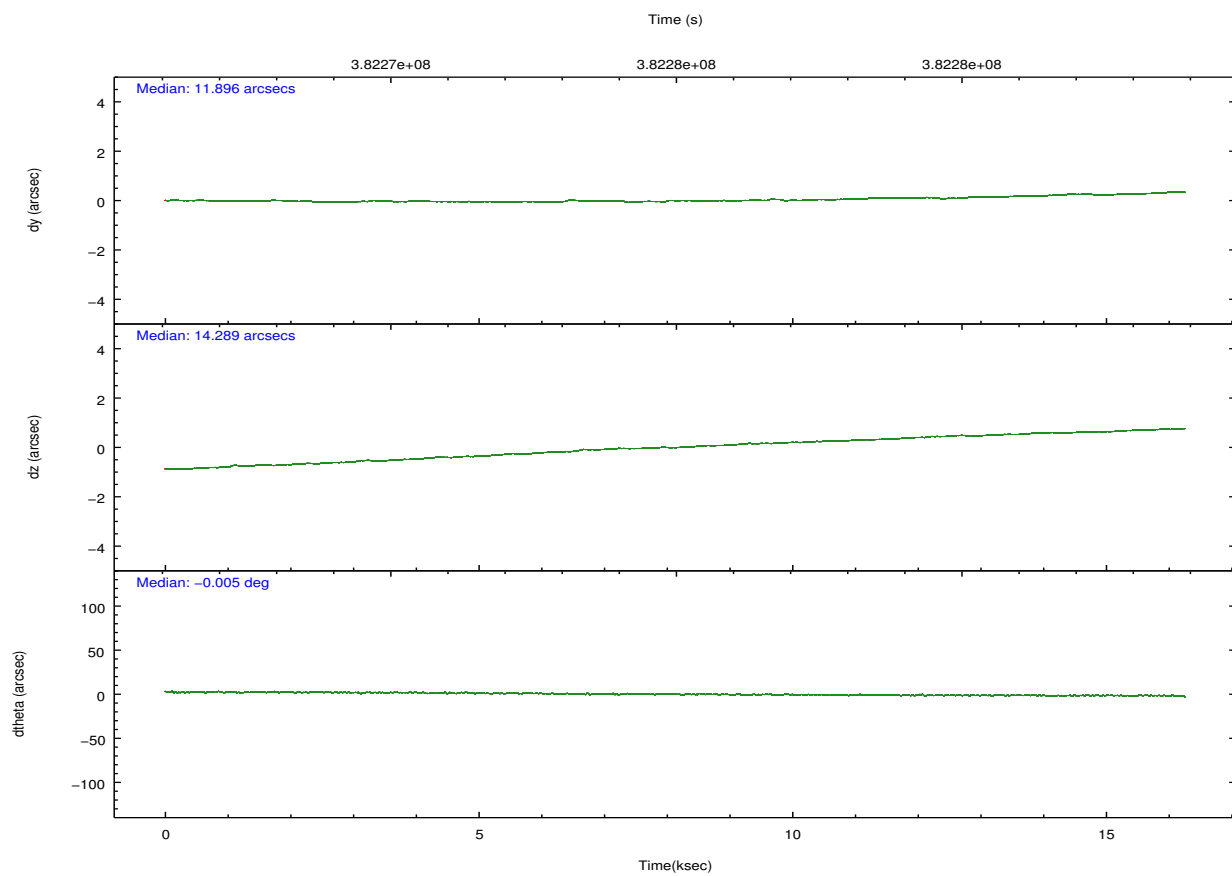
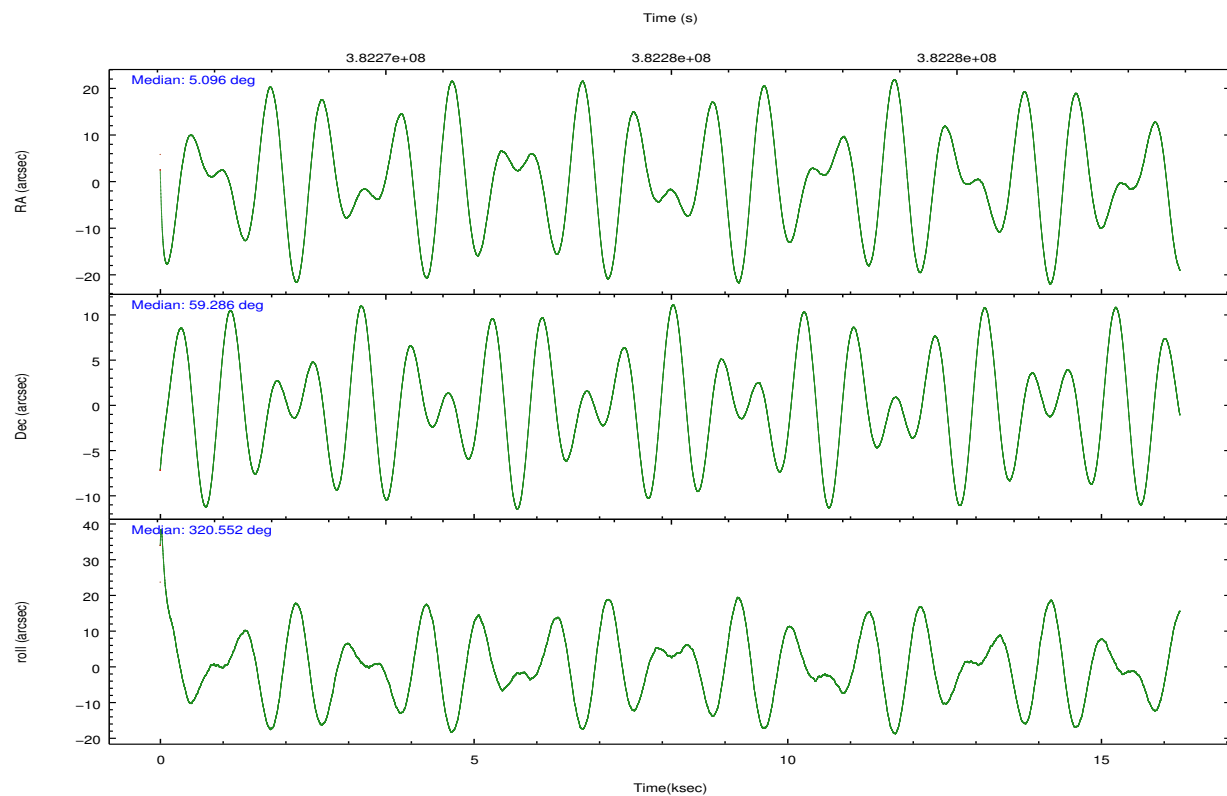
	ccd 2	ccd 3	ccd 5	ccd 6	ccd 7	ccd 8		ccd 2	ccd 3	ccd 5	ccd 6	ccd 7	ccd 8
level 1 events	126273	123836	174822	123619	146595	160139	grade 0 events	4749	5964	5793	4666	6602	12373
rejected events	113396	109989	89575	110237	78471	118989		3%	4%	3%	3%	4%	7%
rejected %	89%	88%	51%	89%	53%	74%	grade 1 events	85	88	361	60	226	133
								0%	0%	0%	0%	0%	0%
							grade 2 events	3032	2686	26310	3009	14110	9607
								2%	2%	15%	2%	9%	5%
							grade 3 events	1305	1365	3337	1436	6115	4339
								1%	1%	1%	1%	4%	2%
							grade 4 events	1373	1330	3346	1394	6141	4044
								1%	1%	1%	1%	4%	2%
							grade 5 events	4770	5271	13722	5343	15209	7611
								3%	4%	7%	4%	10%	4%
							grade 6 events	2421	2505	46475	2878	35176	10790
								1%	2%	26%	2%	23%	6%
							grade 7 events	108538	104627	75478	104833	63016	111242
								85%	84%	43%	84%	42%	69%

2.2 Compared Parameters

Parameter	Planned	Actual	Parameter	Planned	Actual
Instrument	ACIS	ACIS	Obspar format version number	7	7
Detector	ACIS-235678	ACIS-235678	Obspar file type	PREDICTED	ACTUAL
Grating	NONE	NONE	Obspar update status	NONE	UPDATED
Data mode	VFAINT	VFAINT	CCD I0 on	N	N
Observation mode	POINTING	POINTING	CCD I1 on	N	N
[deg] Pointing RA	5.043325	5.096215081551009	CCD I2 on	O2	Y
[deg] Pointing Dec	59.290189	59.28609852779215	CCD I3 on	O3	Y
[deg] Pointing Roll	320.448987	320.5601653207978	CCD S0 on	N	N
[mm] SIM focus pos	-0.684267	-0.6828225247311905	CCD S1 on	O1	Y
[mm] SIM defocus	0	0.001444936568705701	CCD S2 on	O5	Y
[mm] SIM translation stage pos	-190.132523	-190.1400660498719	CCD S3 on	Y	Y
[mm] SIM translation stage offset	0	0.00754346686406393	CCD S4 on	O4	Y
[s] Observation start time (MET)	382268098.184000	382265877.65515	CCD S5 on	N	N
Observation start date	2010-02-11T09:33:52	2010-02-11T08:57:57	Number of optional ACIS chips dropped	0	0
[s] Observation end time (MET)	382283098.184000	382283715.73105	On-chip summing requested	N	N
Observation end date	2010-02-11T13:43:52	2010-02-11T13:55:15	Subarray requested	NONE	NONE
Read mode	TIMED	TIMED	Alternating exposures requested	N	N
			[s] Primary exposure time	0.000000	3.2

2.3 Aspect



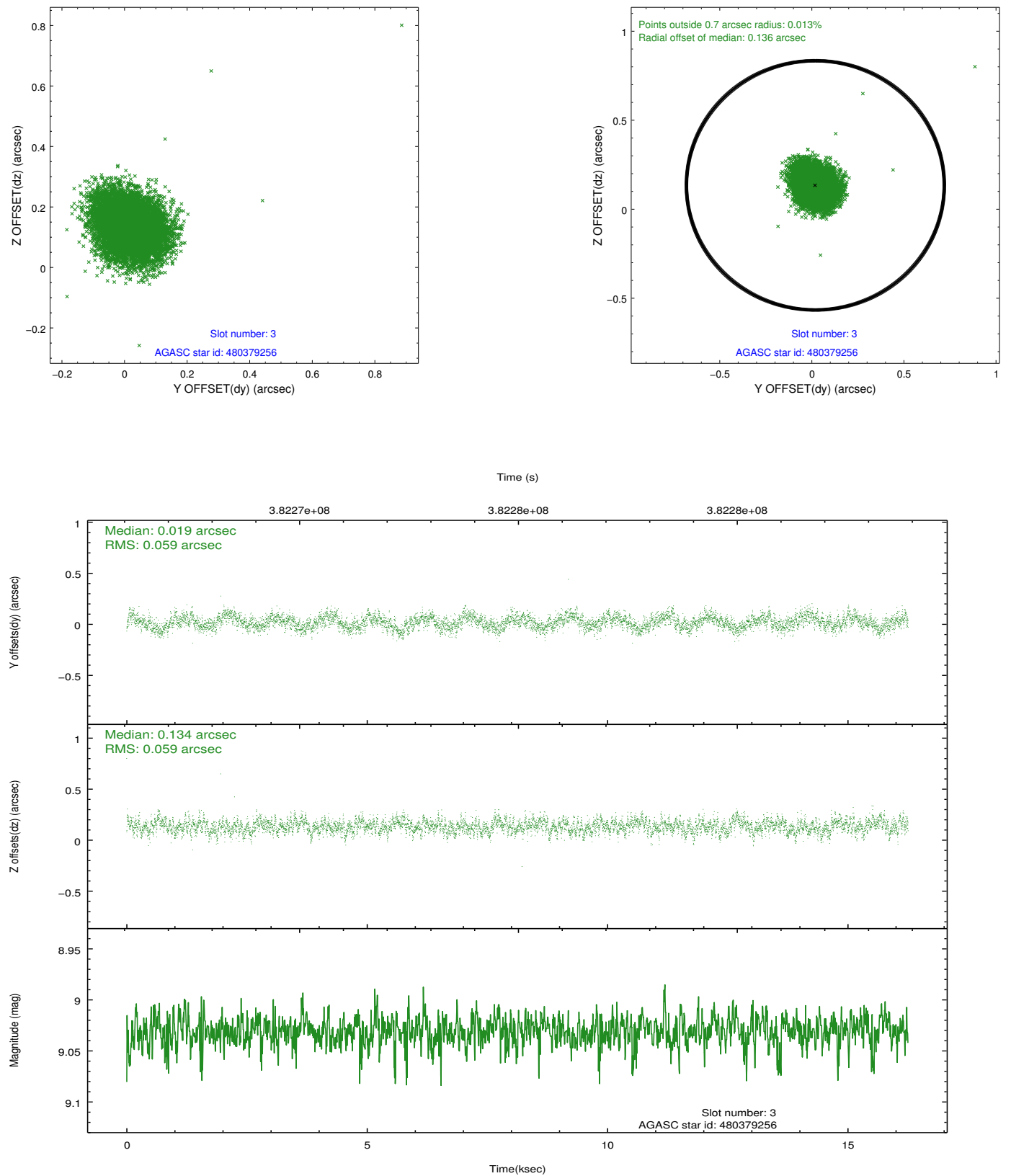


Slot Statistics

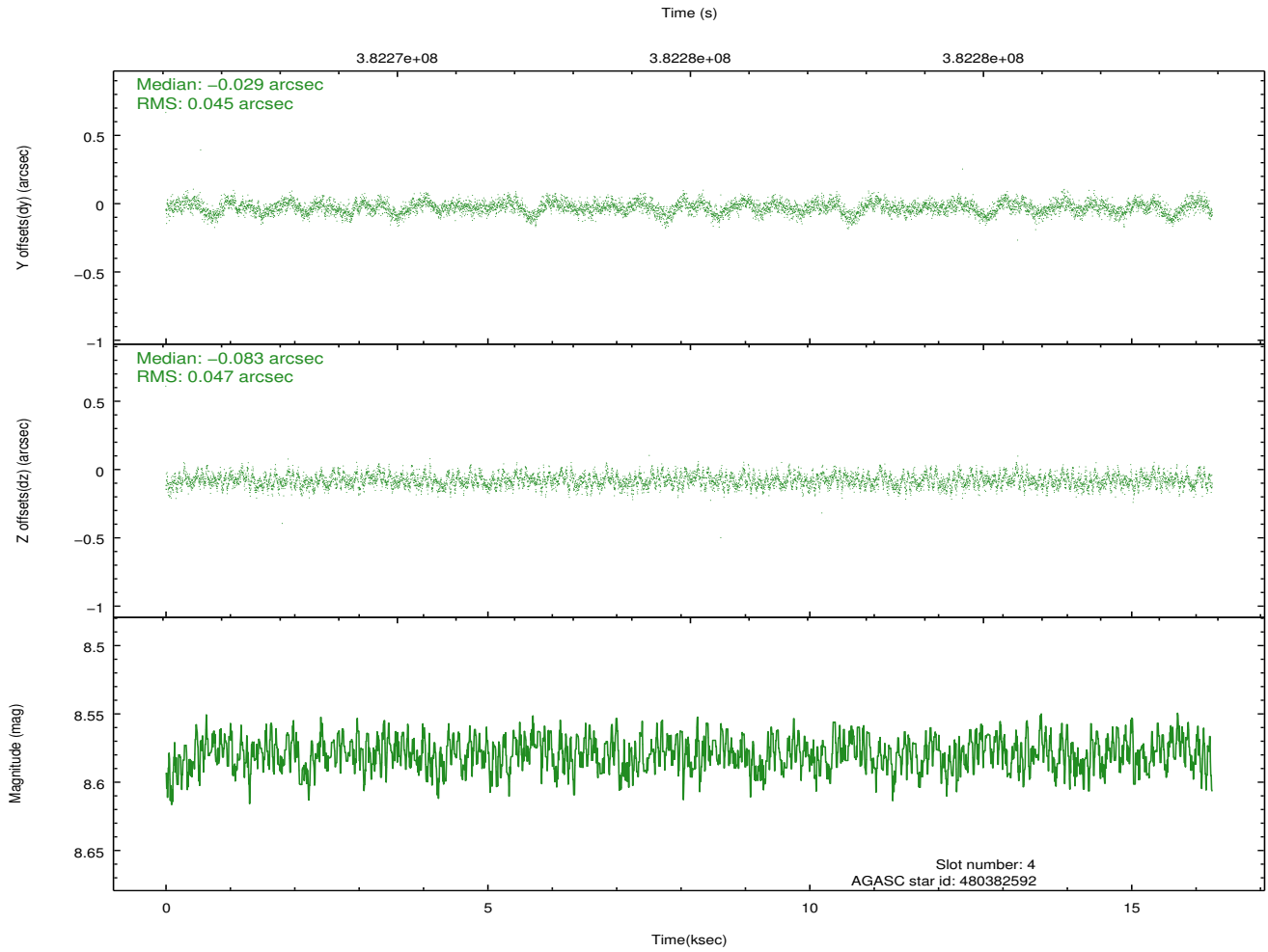
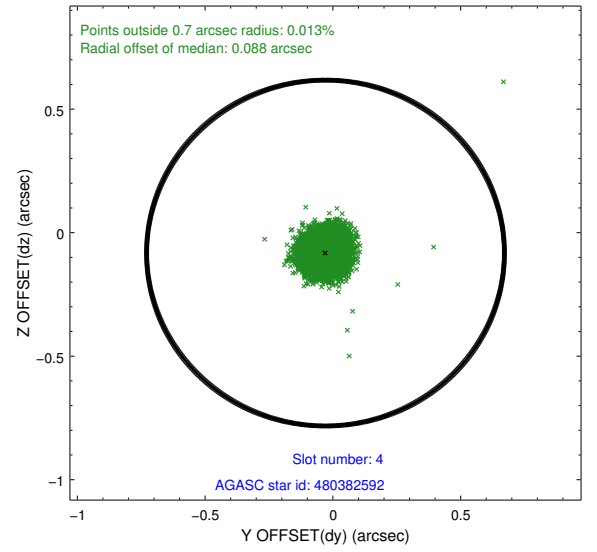
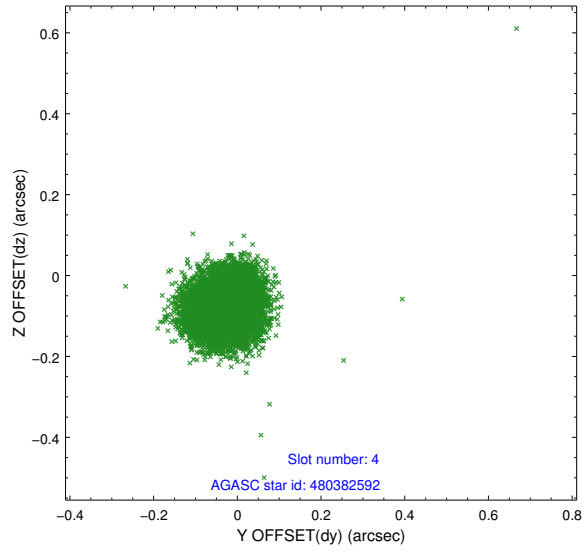
slot	status	id	mag	n_pts	med_dy	med_dz	dr1	dr2	ra	dec	mean_y	mean_z
0	FID	ACIS-S-2	6.93	3965	-0.041	-0.027	0.013	0.022	0.000000	0.000000	-764.85	-1735.66
1	FID	ACIS-S-4	7.02	3965	0.121	0.027	0.014	0.023	0.000000	0.000000	2148.45	172.62
2	FID	ACIS-S-5	7.05	3965	-0.112	0.009	0.012	0.017	0.000000	0.000000	-1817.44	166.55
3	GUIDE	480379256	9.03	7924	0.019	0.134	0.089	0.142	5.631259	59.673209	-56.61	1747.73
4	GUIDE	480382592	8.58	7918	-0.029	-0.083	0.069	0.109	3.877912	59.161998	-1375.82	-1710.54
5	GUIDE	480385632	8.17	7927	0.142	-0.136	0.062	0.099	4.459917	59.057587	-302.00	-1329.78
6	GUIDE	480388568	8.32	7928	0.011	0.033	0.079	0.123	3.952528	59.440255	-1893.42	-842.28
7	GUIDE	480387176	9.19	7919	-0.139	0.055	0.103	0.164	3.896033	59.564774	-2254.07	-556.23

2.4 Star Slots

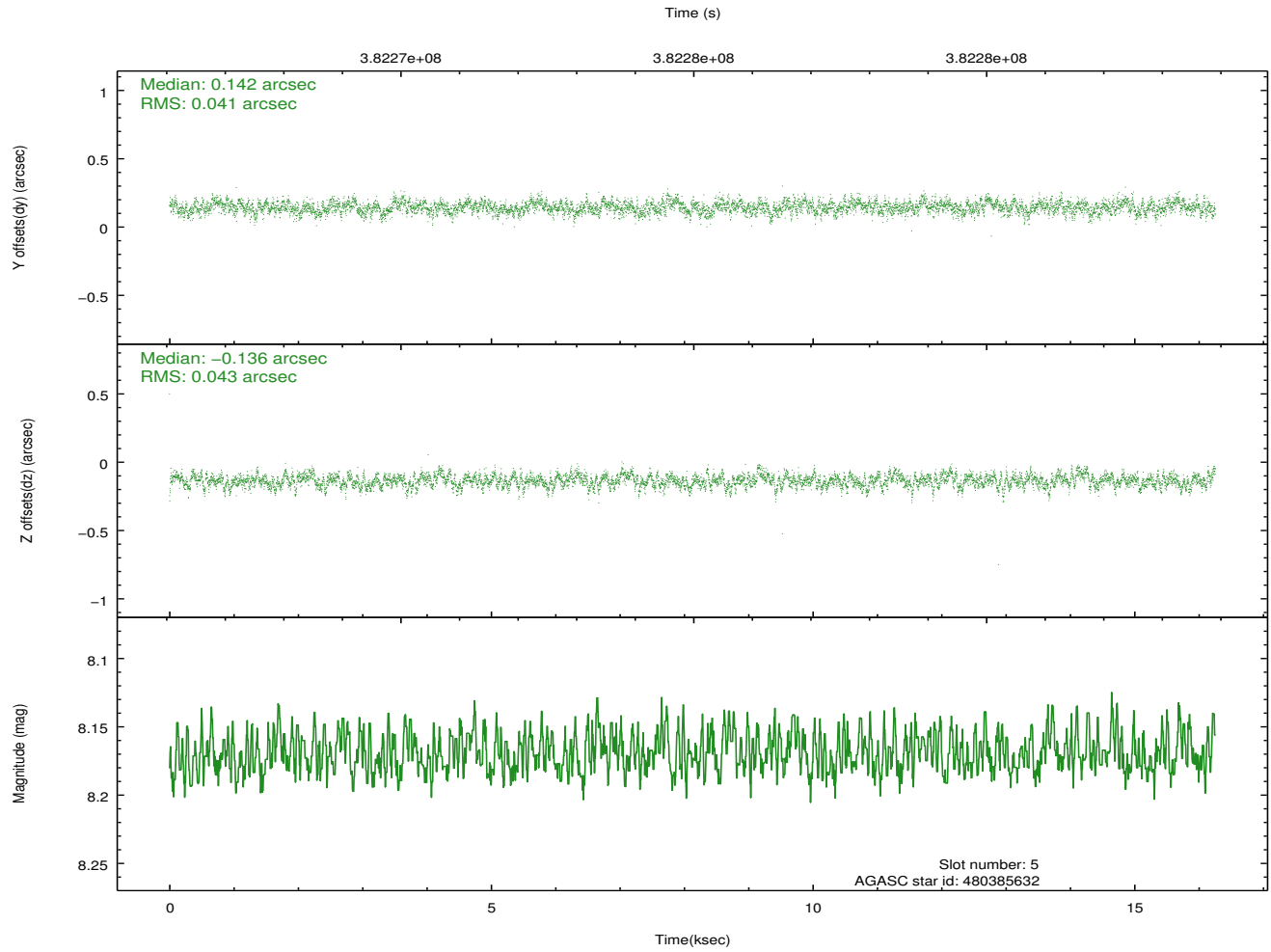
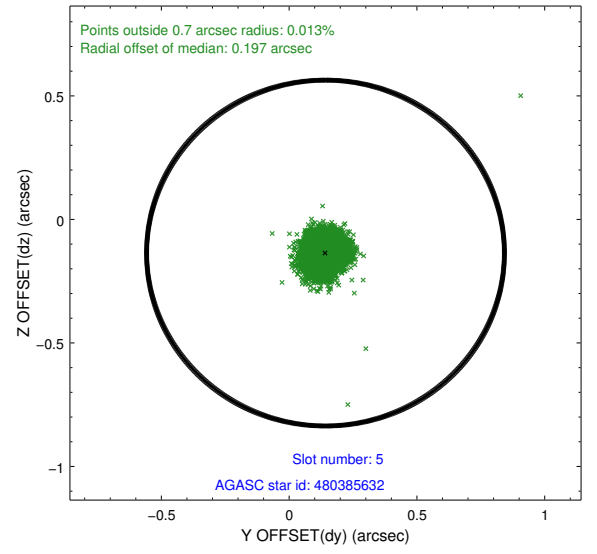
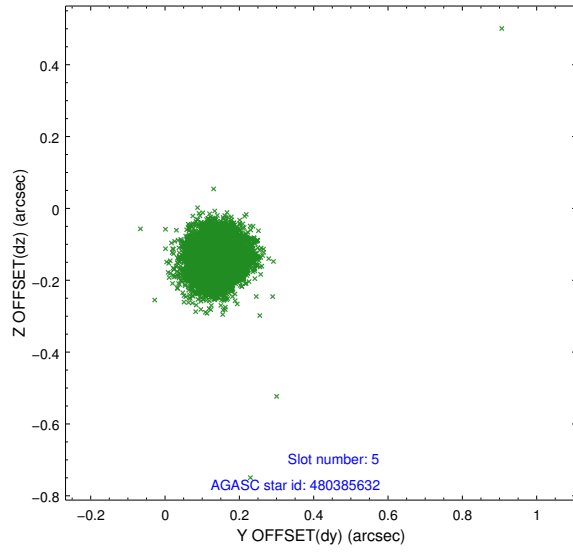
2.4.1 Slot 3



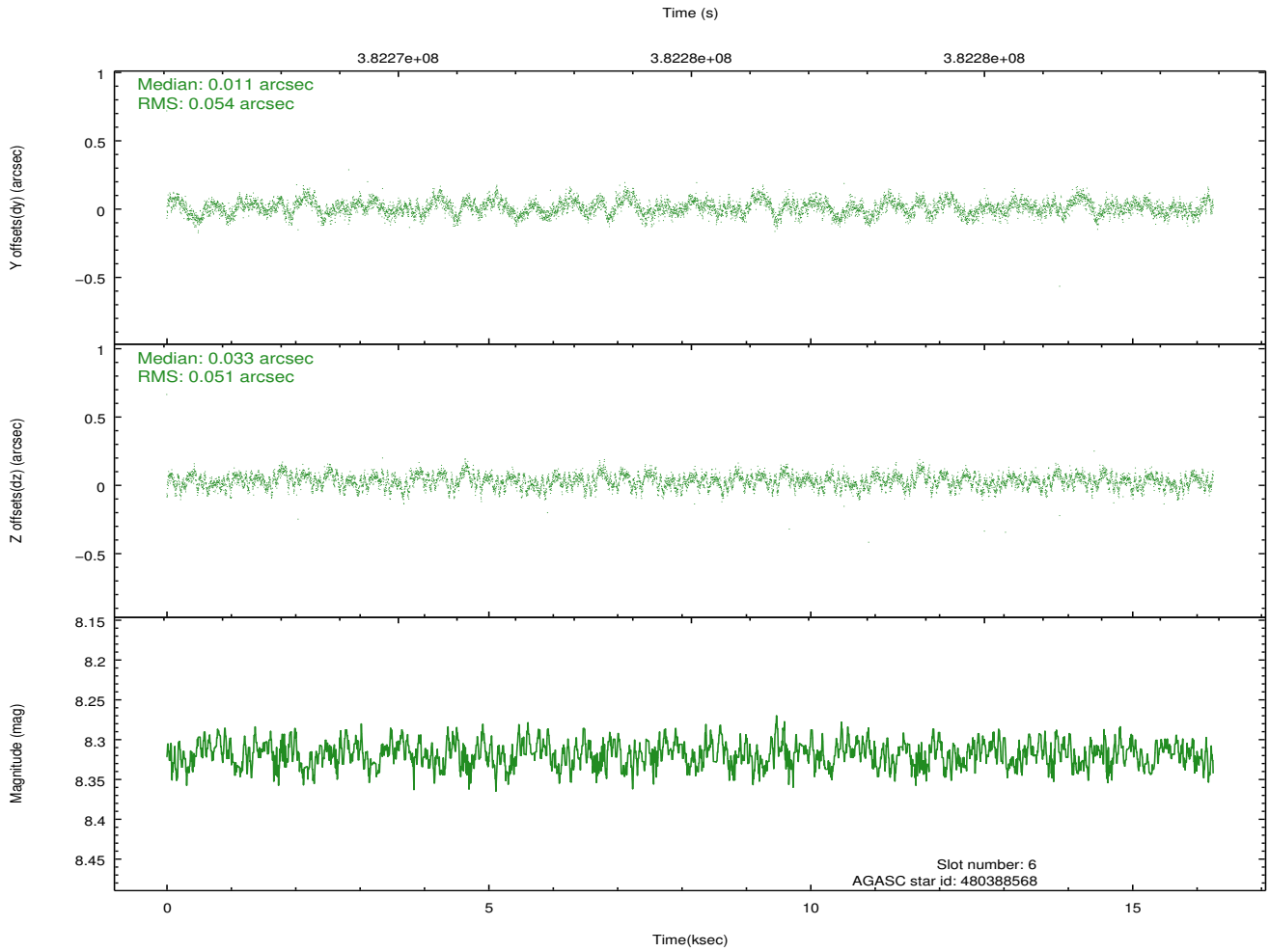
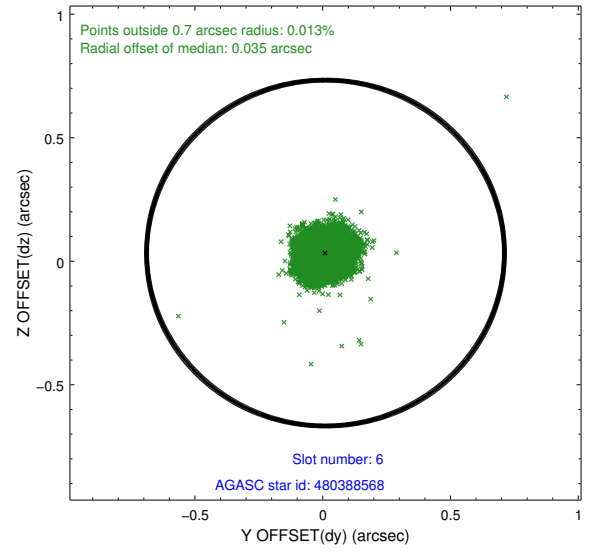
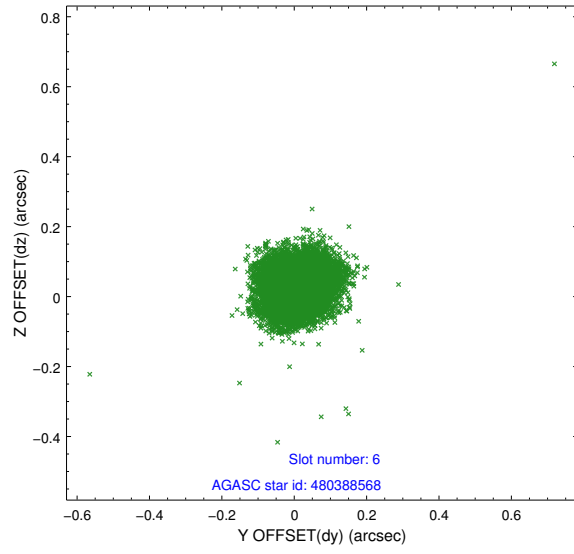
2.4.2 Slot 4



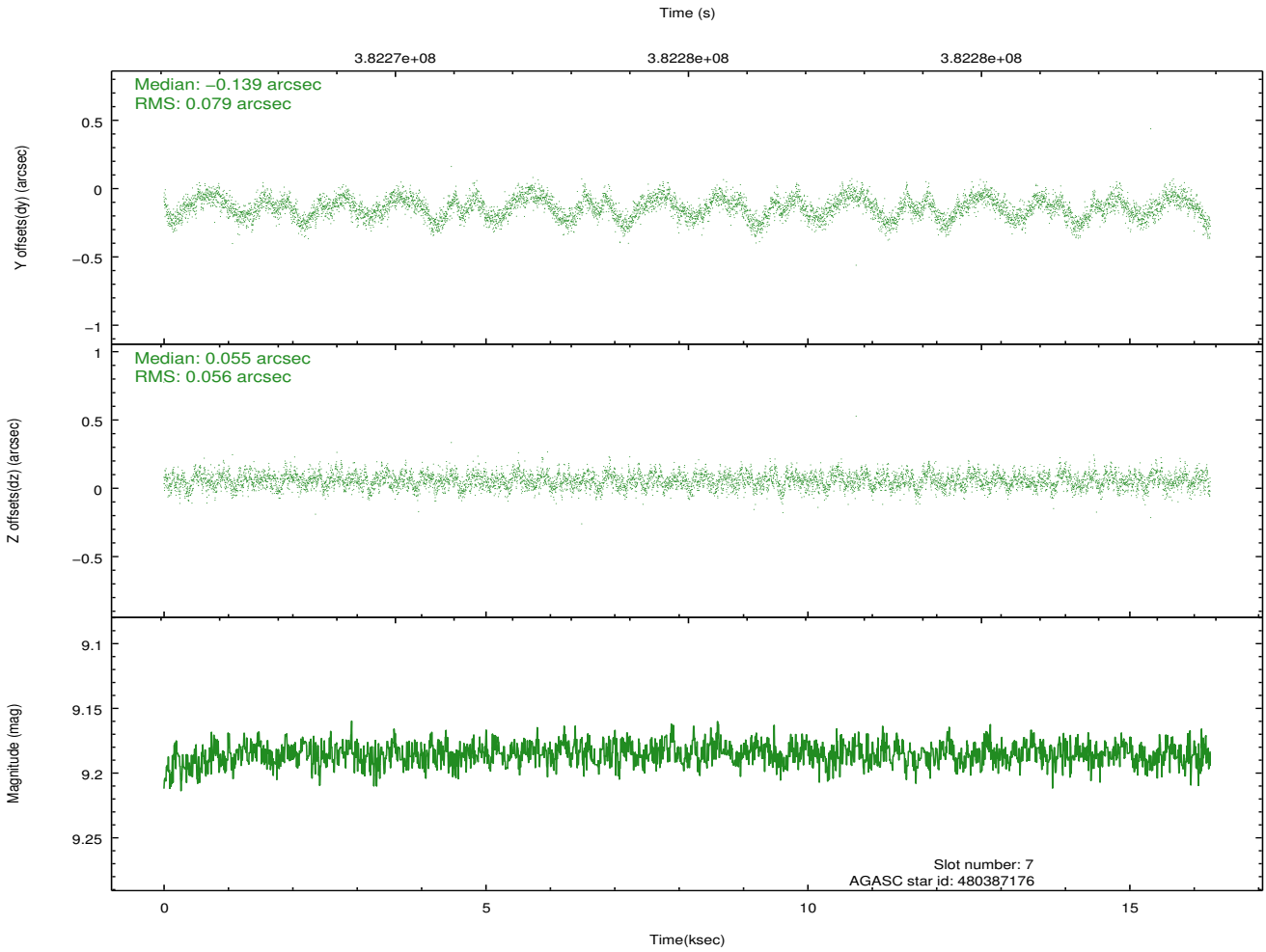
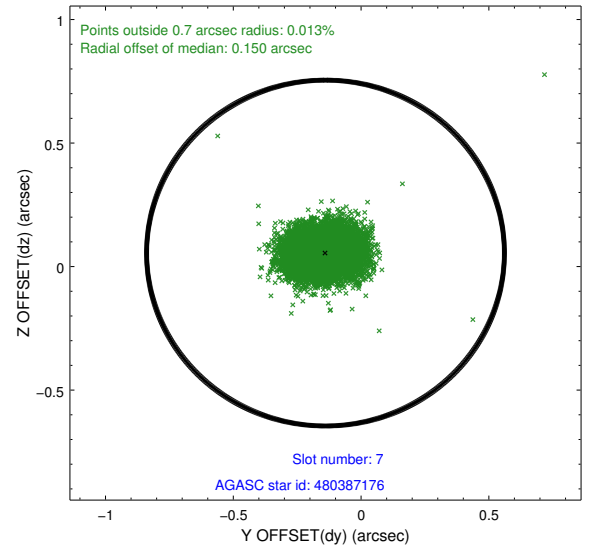
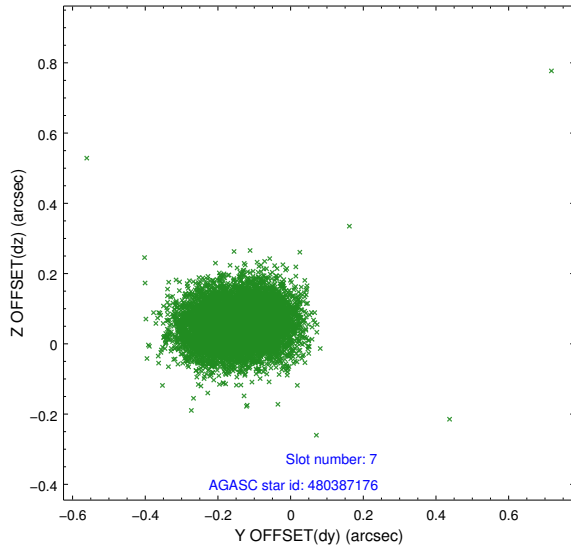
2.4.3 Slot 5



2.4.4 Slot 6

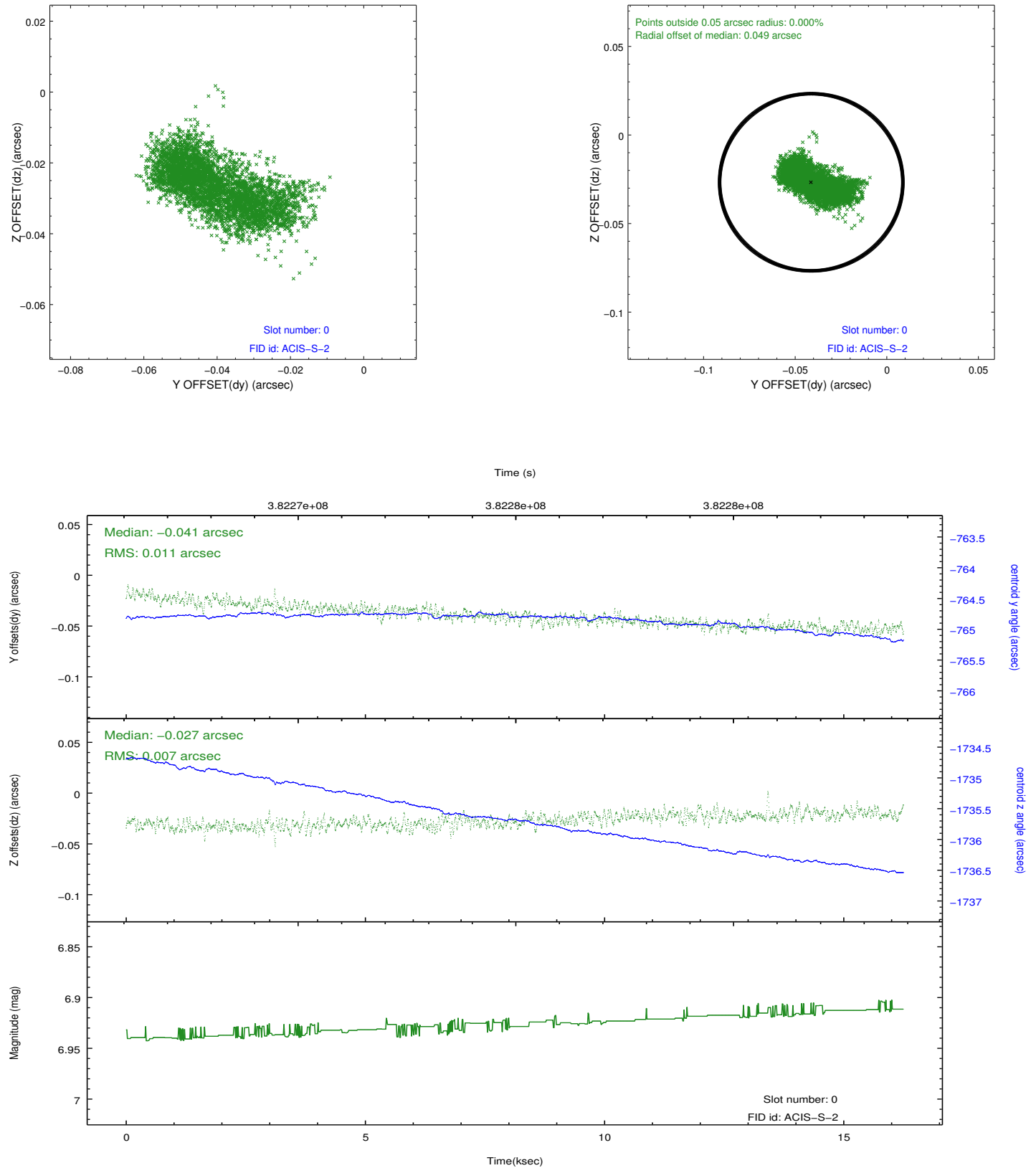


2.4.5 Slot 7

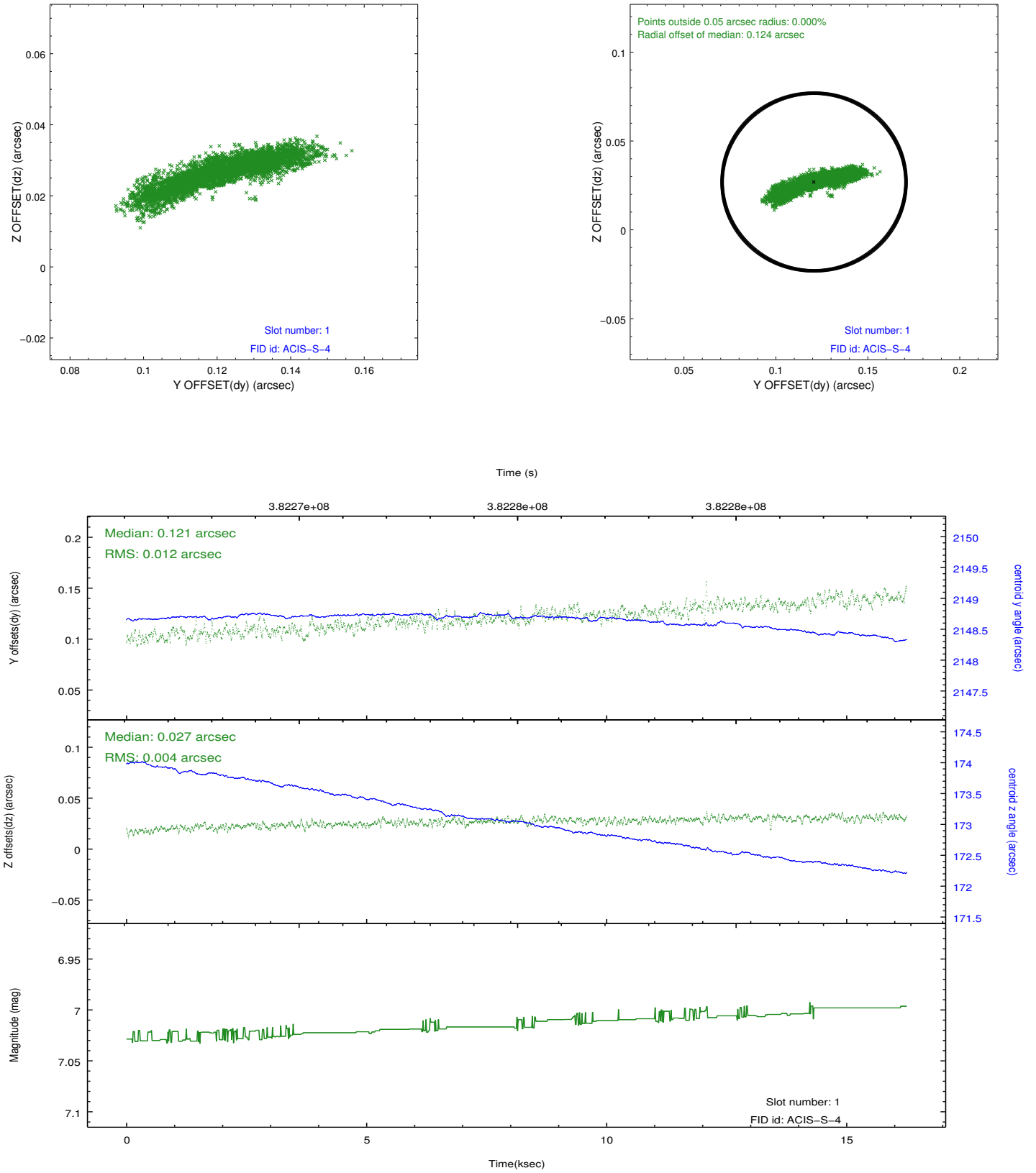


2.5 FID Slots

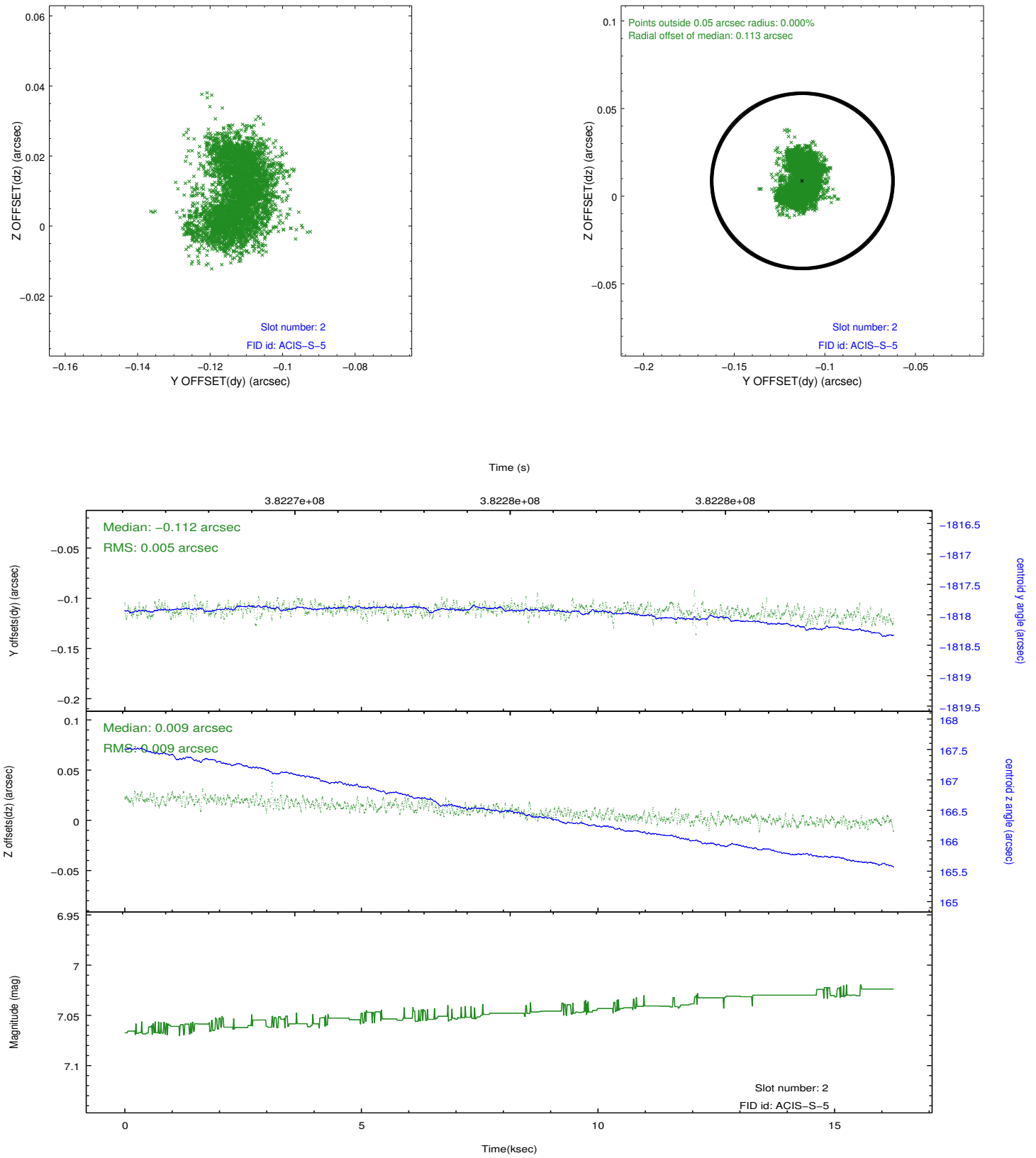
2.5.1 Slot 0



2.5.2 Slot 1



2.5.3 Slot 2



A Summary

A.1 Status

V&V Scientist	Jen Lauer
V&V Date (YYYY-MM-DD)	2012.06.27
V&V Edition	1
V&V Disposition and Status	OK
V&V Charge Time	15.046399944007

A.2 Comments

Monitor constraint met, follows obs11081 by 48 days.