

# V&V Reference Report

## L2 ASCDS Version : 8.4.5

Observation 11002 - L2 Version 2  
Chandra X-Ray Center

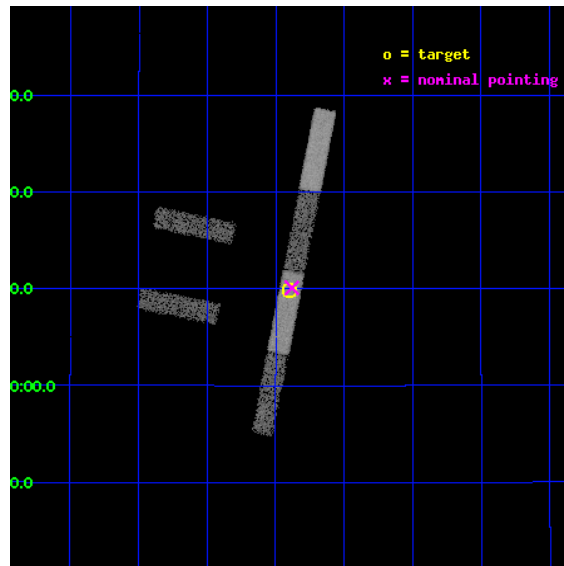
L2 Processing Date : Jun 30 2012

## Contents

<b>1</b>	<b>Front</b>	<b>2</b>
<b>2</b>	<b>OBI</b>	<b>3</b>
2.1	OBI . . . . .	3
2.1.1	Images . . . . .	3
2.1.2	Bias . . . . .	3
2.1.3	Parameters . . . . .	4
2.1.4	Events . . . . .	4
2.2	Compared Parameters . . . . .	5
2.3	Aspect . . . . .	6
2.4	Star Slots . . . . .	9
2.4.1	Slot 3 . . . . .	9
2.4.2	Slot 4 . . . . .	10
2.4.3	Slot 5 . . . . .	11
2.4.4	Slot 6 . . . . .	12
2.4.5	Slot 7 . . . . .	13
2.5	FID Slots . . . . .	14
2.5.1	Slot 0 . . . . .	14
2.5.2	Slot 1 . . . . .	15
2.5.3	Slot 2 . . . . .	16
<b>A</b>	<b>Summary</b>	<b>17</b>
A.1	Status . . . . .	17
A.2	Comments . . . . .	17

# 1 Front

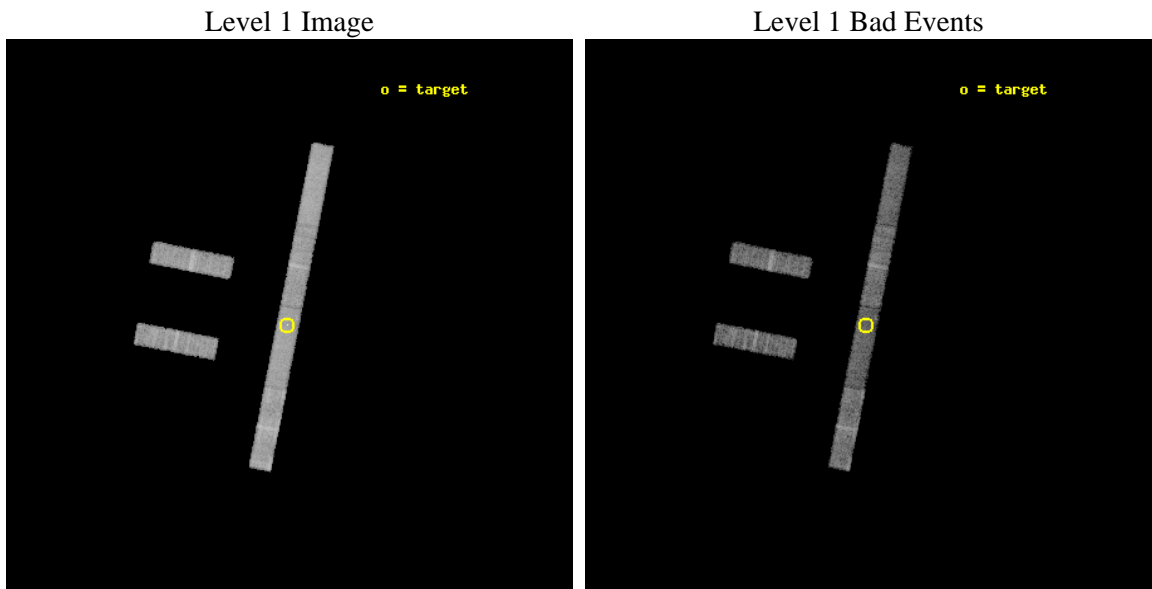
seq_num	200633	Sequence number
obs_id	11002	Observation id
title	NeII as a Tracer for X-Rays in Disks Around T Tauri Stars	Proposal
observer	Prof. Manuel Guedel	Principal investigator
object	St 34	Source name
dtcycle	0	&#160
cycle	P	events from which exps? Prim/Second/Both
ra_targ	73.59875	Observer's specified target RA [deg]
dec_targ	17.164861	Observer's specified target Dec [deg]
ra_nom	73.595350050309	Nominal RA [deg]
dec_nom	17.168400710891	Nominal Dec [deg]
roll_nom	101.15616983941	Nominal Roll [deg]
revision	2	Processing version of data
ontime	10096.900218844	Sum of GTIs [s]
livetime	9733.7431121861	Livetime [s]
ontime2	10096.900218844	Sum of GTIs [s]
ontime3	10096.900218844	Sum of GTIs [s]
ontime5	10096.900218844	Sum of GTIs [s]
ontime6	10096.900218844	Sum of GTIs [s]
ontime7	10096.900218844	Sum of GTIs [s]
ontime8	10096.900218844	Sum of GTIs [s]
l2events	34268	Number of level 2 events



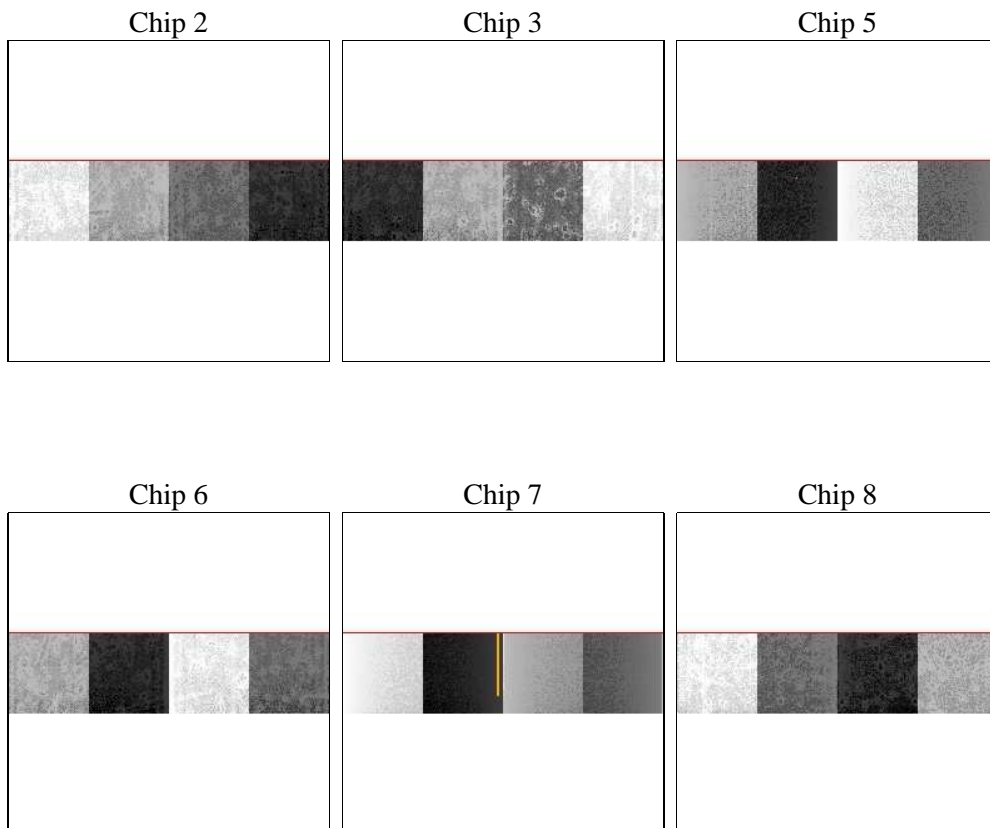
## 2 OBI

### 2.1 OBI

#### 2.1.1 Images



#### 2.1.2 Bias



### 2.1.3 Parameters

obi_num	0	Obi number	sched_exp_time	10000.728000	[s] Scheduled observation exposure time
ascdsver	8.4.5	Processing system revision	ontime	10096.900218844	Sum of GTIs [s]
caldsver	4.5.0	&#160	ontime2	10096.900218844	Sum of GTIs [s]
date	2012-06-30T14:11:01	Date and time of file creation	ontime3	10096.900218844	Sum of GTIs [s]
revision	2	Processing version of data	ontime5	10096.900218844	Sum of GTIs [s]
			ontime6	10096.900218844	Sum of GTIs [s]
			ontime7	10096.900218844	Sum of GTIs [s]
			ontime8	10096.900218844	Sum of GTIs [s]
			l1events	152424	Number of level 1 events

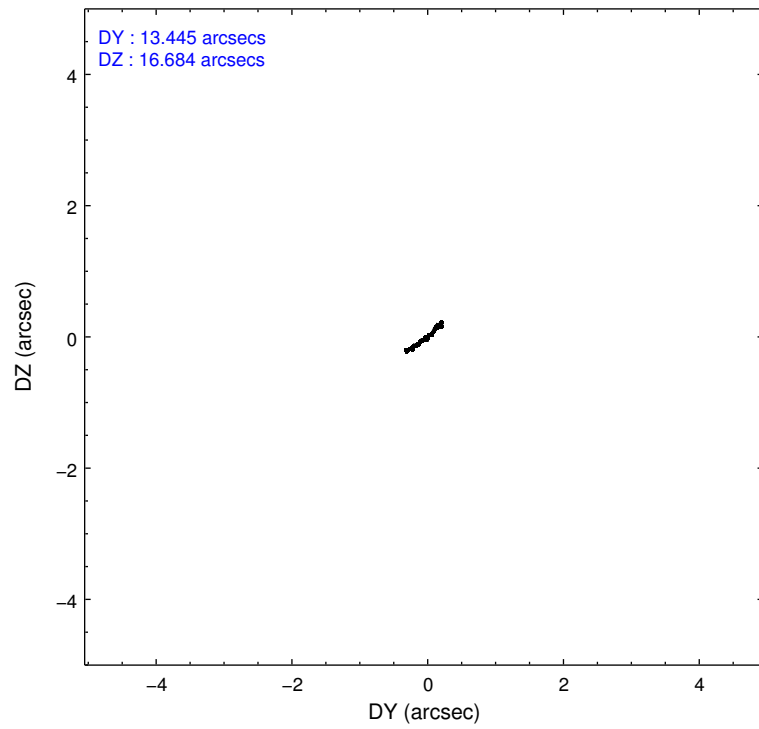
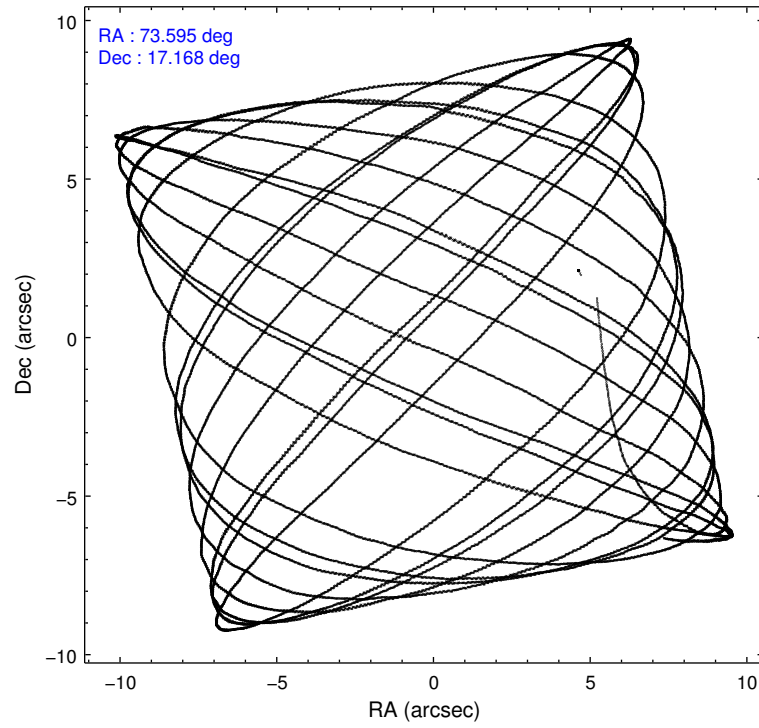
### 2.1.4 Events

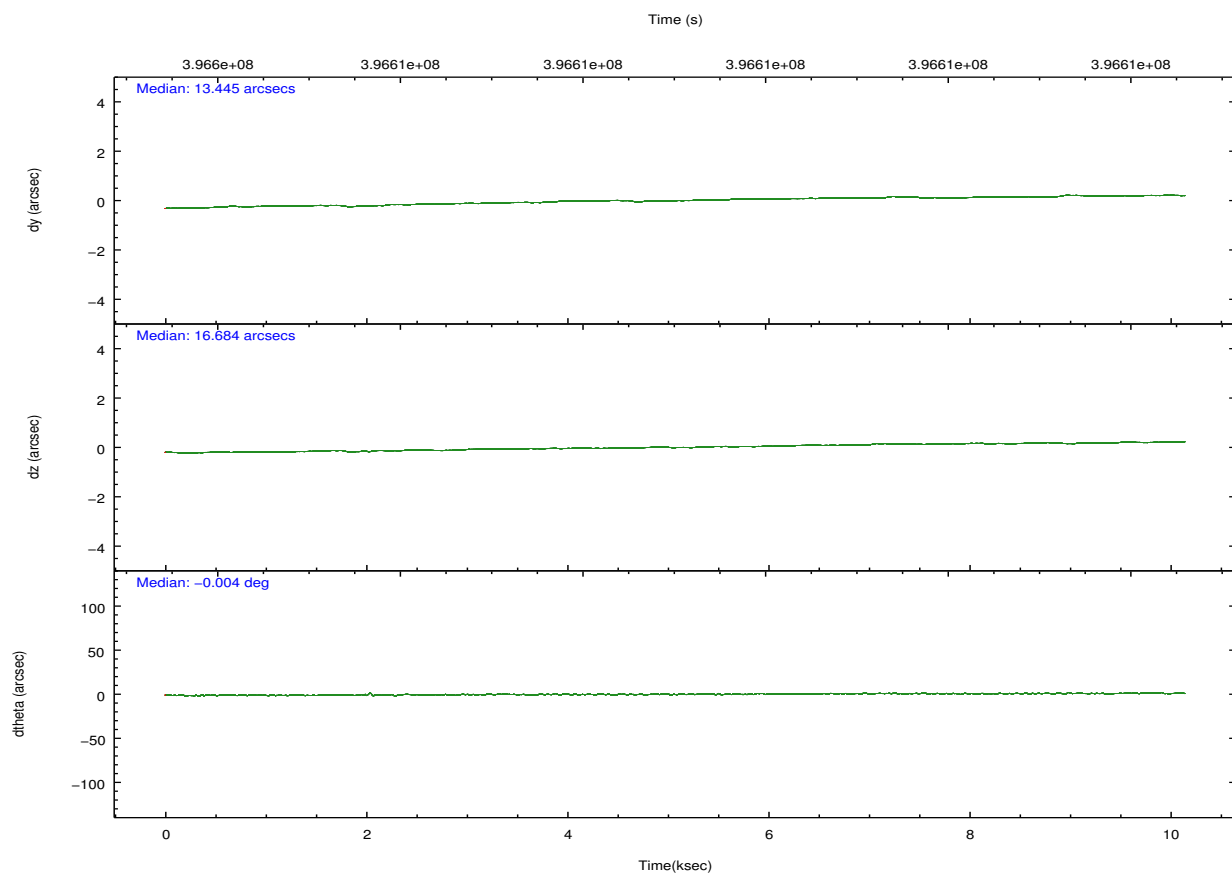
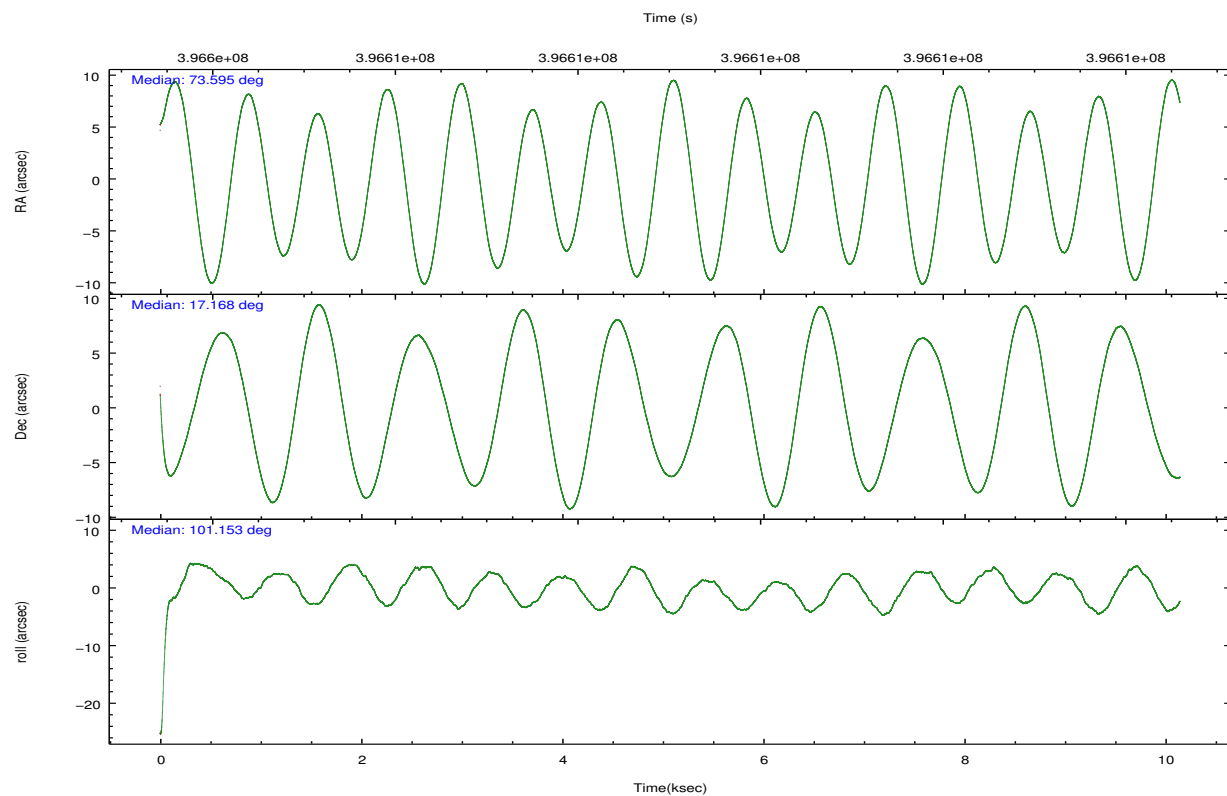
	ccd 2	ccd 3	ccd 5	ccd 6	ccd 7	ccd 8		ccd 2	ccd 3	ccd 5	ccd 6	ccd 7	ccd 8
level 1 events	22669	21244	29466	22980	25502	30563	grade 0 events	728	639	1227	750	1330	1932
rejected events	20129	19122	14791	20408	13342	23151		3%	3%	4%	3%	5%	6%
rejected %	88%	90%	50%	88%	52%	75%	grade 1 events	7	7	65	10	35	27
								0%	0%	0%	0%	0%	0%
							grade 2 events	598	447	4290	540	2660	1678
								2%	2%	14%	2%	10%	5%
							grade 3 events	378	310	1005	362	1324	810
								1%	1%	3%	1%	5%	2%
							grade 4 events	378	339	899	375	1332	728
								1%	1%	3%	1%	5%	2%
							grade 5 events	752	814	2593	835	2664	1309
								3%	3%	8%	3%	10%	4%
							grade 6 events	458	387	7258	545	5519	2265
								2%	1%	24%	2%	21%	7%
							grade 7 events	19370	18301	12129	19563	10638	21814
								85%	86%	41%	85%	41%	71%

## 2.2 Compared Parameters

Parameter	Planned	Actual	Parameter	Planned	Actual
Instrument	ACIS	ACIS	Obspar format version number	7	7
Detector	ACIS-235678	ACIS-235678	Obspar file type	PREDICTED	ACTUAL
Grating	NONE	NONE	Obspar update status	NONE	UPDATED
Data mode	VFAINT	VFAINT	CCD I0 on	N	N
Observation mode	POINTING	POINTING	CCD I1 on	N	N
[deg] Pointing RA	73.614424	73.59535005030875	CCD I2 on	O1	Y
[deg] Pointing Dec	17.148073	17.16840071089064	CCD I3 on	O2	Y
[deg] Pointing Roll	100.993960	101.1561698394104	CCD S0 on	N	N
[mm] SIM focus pos	-0.684267	-0.6828225247311905	CCD S1 on	Y	Y
[mm] SIM defocus	0	0.001444936568705701	CCD S2 on	Y	Y
[mm] SIM translation stage pos	-190.132523	-190.1425803651734	CCD S3 on	Y	Y
[mm] SIM translation stage offset	0	0.01005778216563158	CCD S4 on	Y	Y
[s] Observation start time (MET)	396604072.184000	396602822.44723	CCD S5 on	N	N
Observation start date	2010-07-27T07:46:46	2010-07-27T07:27:02	Number of optional ACIS chips dropped	0	0
[s] Observation end time (MET)	396614073.184000	396614298.86032	On-chip summing requested	N	N
Observation end date	2010-07-27T10:33:27	2010-07-27T10:38:18	Subarray requested	CUSTOM	1/4
Read mode	TIMED	TIMED	Subarray start row	385	385
			Subarray row count	256	256
			Alternating exposures requested	N	N
			[s] Primary exposure time	0.000000	1.1

## 2.3 Aspect



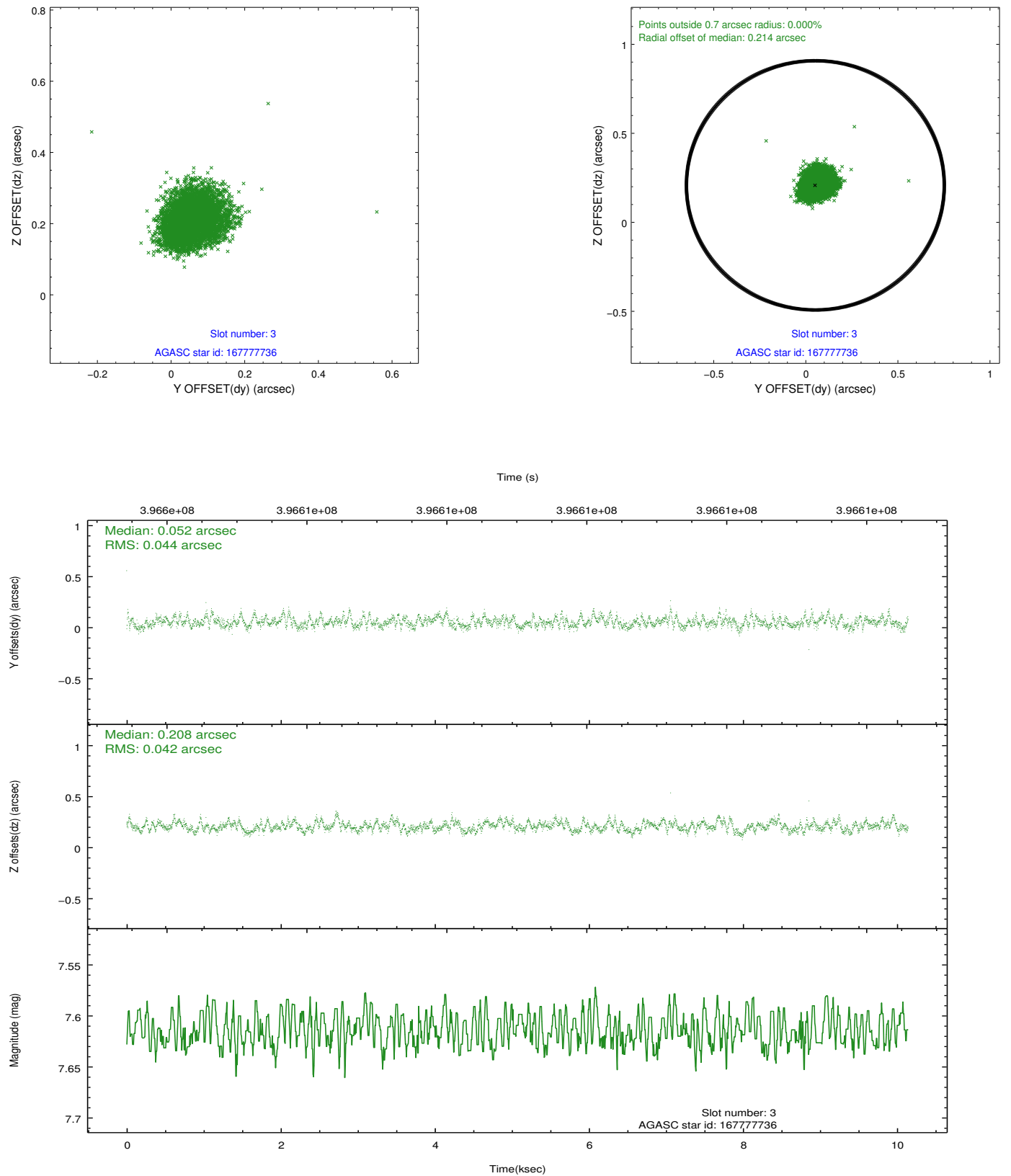


### Slot Statistics

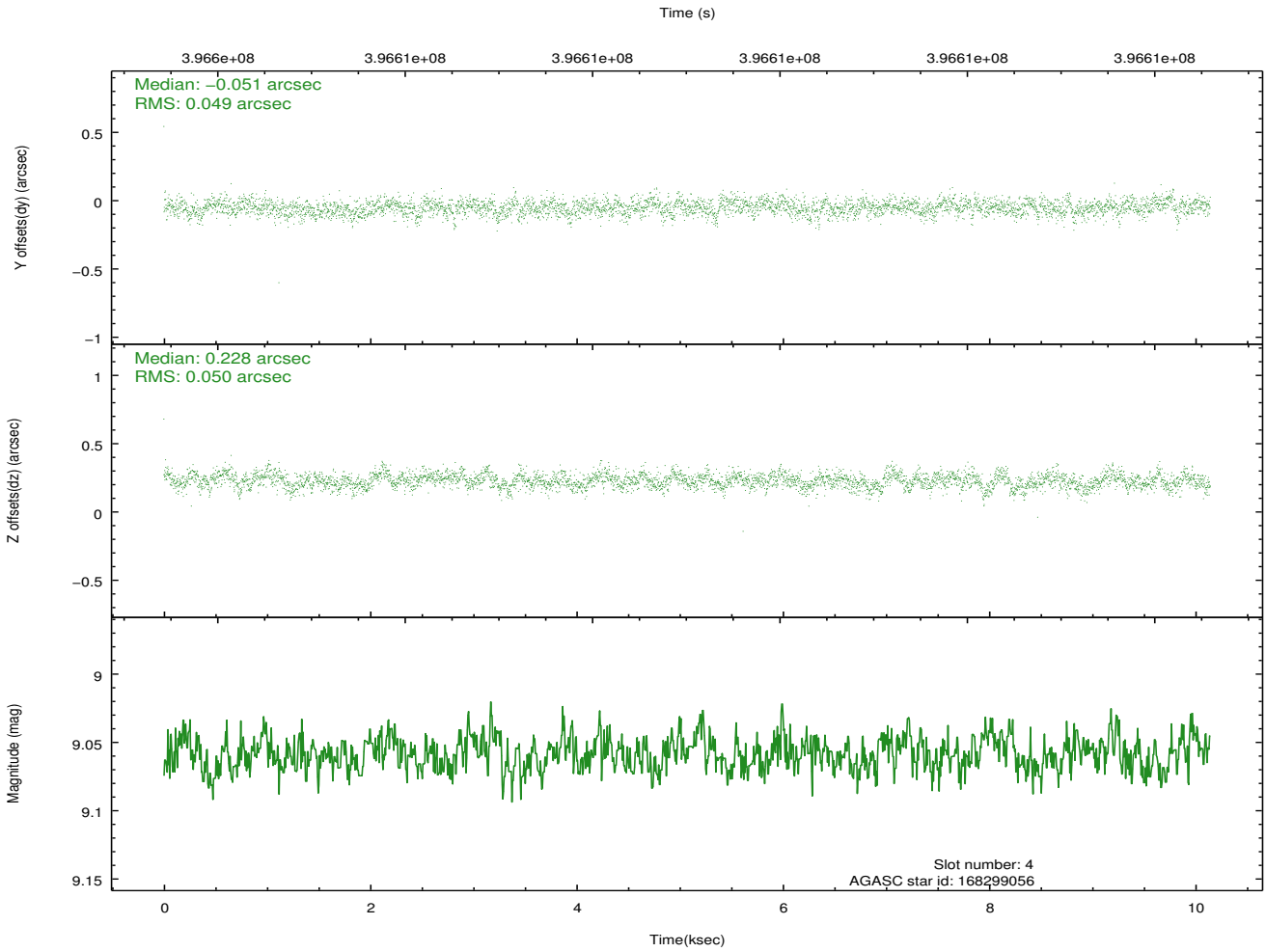
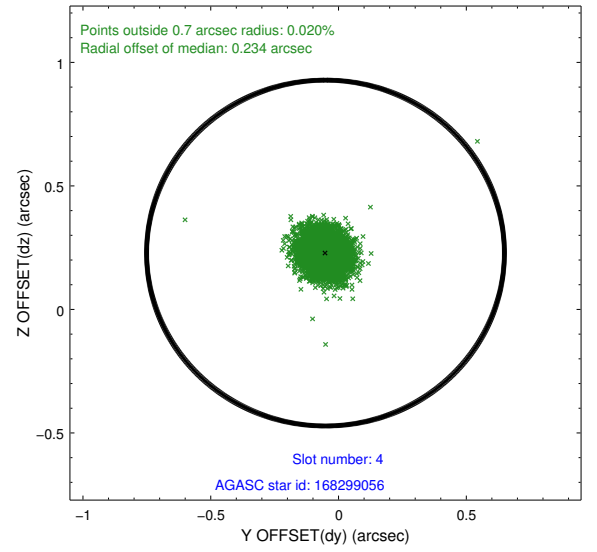
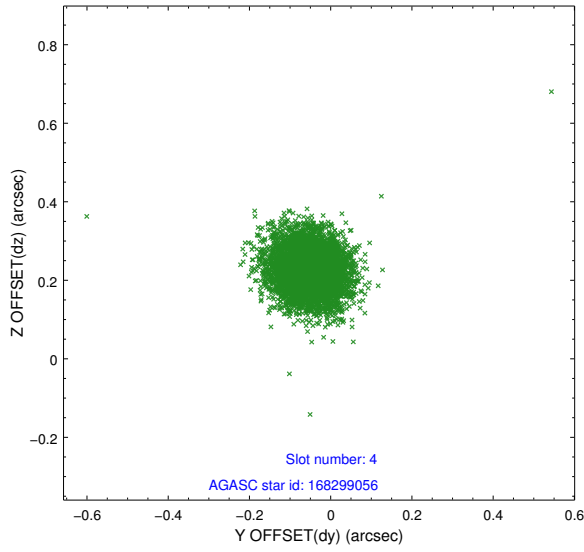
slot	status	id	mag	n_pts	med_dy	med_dz	dr1	dr2	ra	dec	mean_y	mean_z
0	FID	ACIS-S-2	6.88	2475	-0.025	-0.017	0.008	0.014	0.000000	0.000000	-766.40	-1738.07
1	FID	ACIS-S-4	6.96	2475	0.155	0.017	0.009	0.016	0.000000	0.000000	2146.83	169.88
2	FID	ACIS-S-5	6.99	2474	-0.162	0.009	0.009	0.017	0.000000	0.000000	-1818.69	164.16
3	GUIDE	167777736	7.61	4949	0.052	0.208	0.065	0.104	73.831539	16.620301	-2007.27	-372.60
4	GUIDE	168299056	9.06	4943	-0.051	0.228	0.073	0.119	73.942736	17.766399	1971.26	-1529.10
5	GUIDE	168302224	9.55	4876	-0.124	-0.199	0.100	0.165	72.922697	17.456381	1546.91	2119.21
6	GUIDE	167775112	8.26	4948	0.171	-0.170	0.069	0.111	73.525055	16.714340	-1473.41	600.65
7	GUIDE	168300256	9.15	4938	-0.048	-0.071	0.084	0.135	72.961750	17.690885	2348.59	1824.87

## 2.4 Star Slots

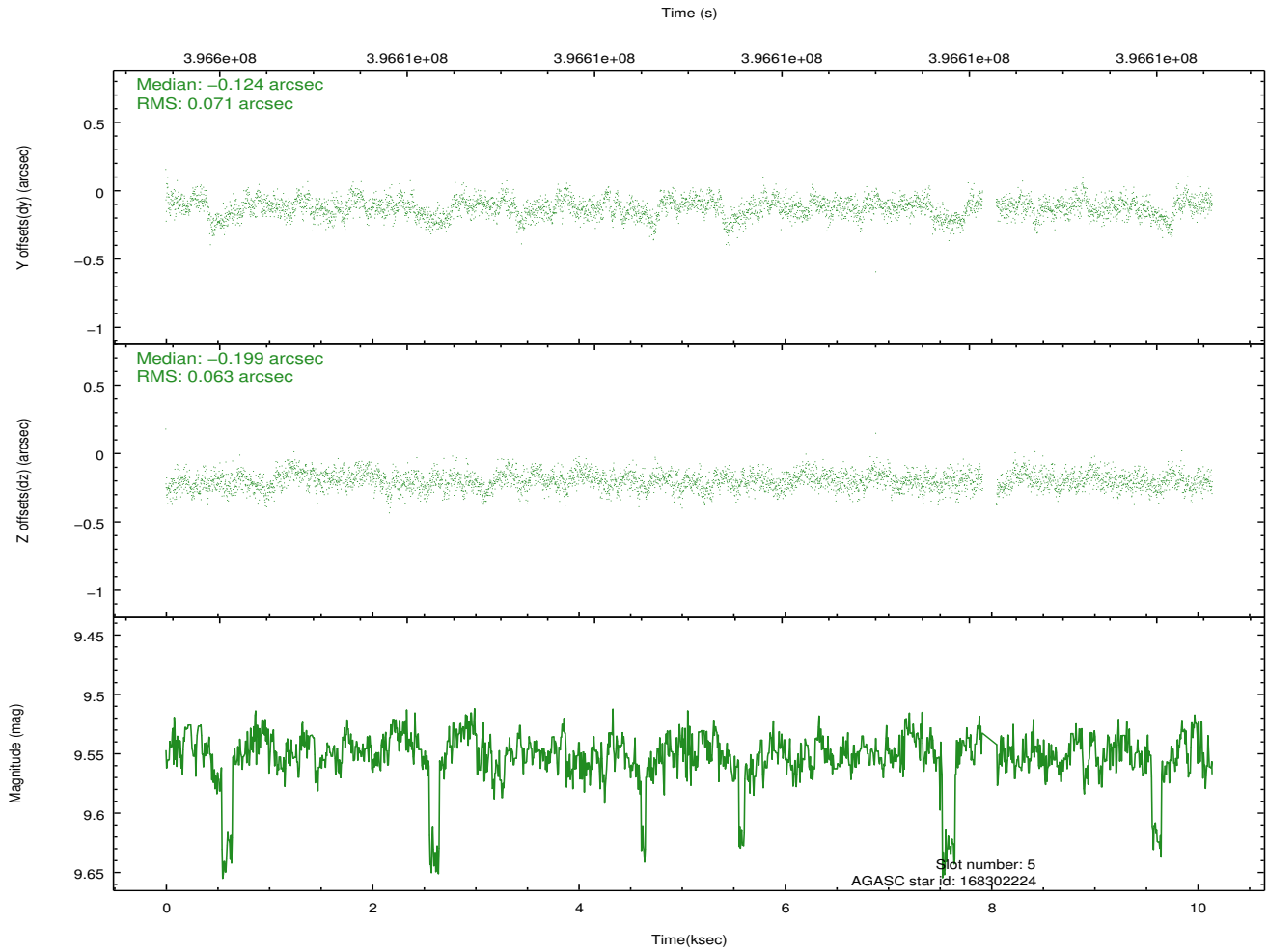
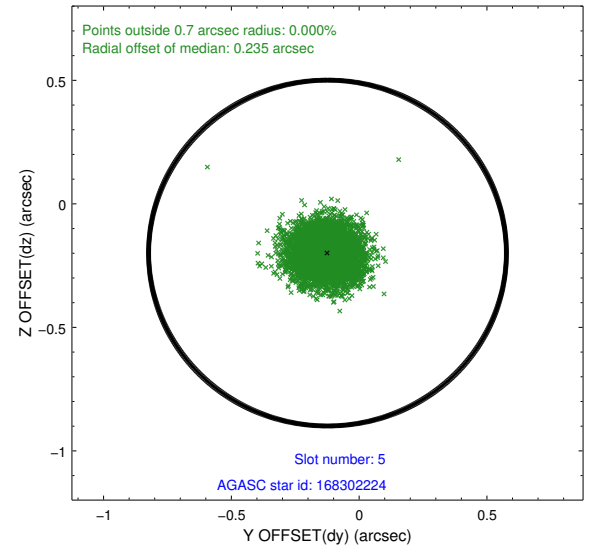
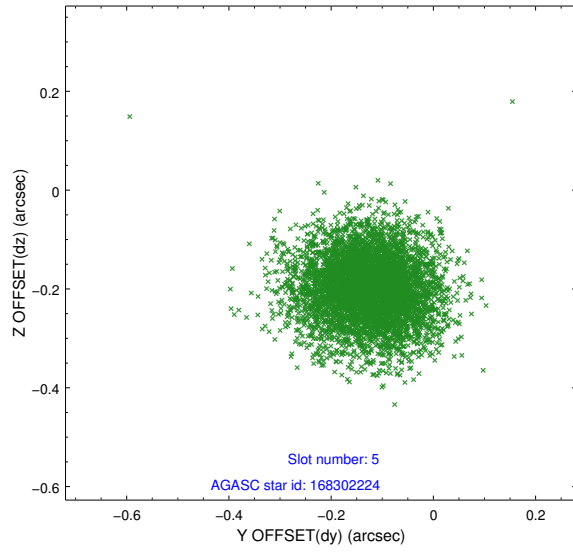
### 2.4.1 Slot 3



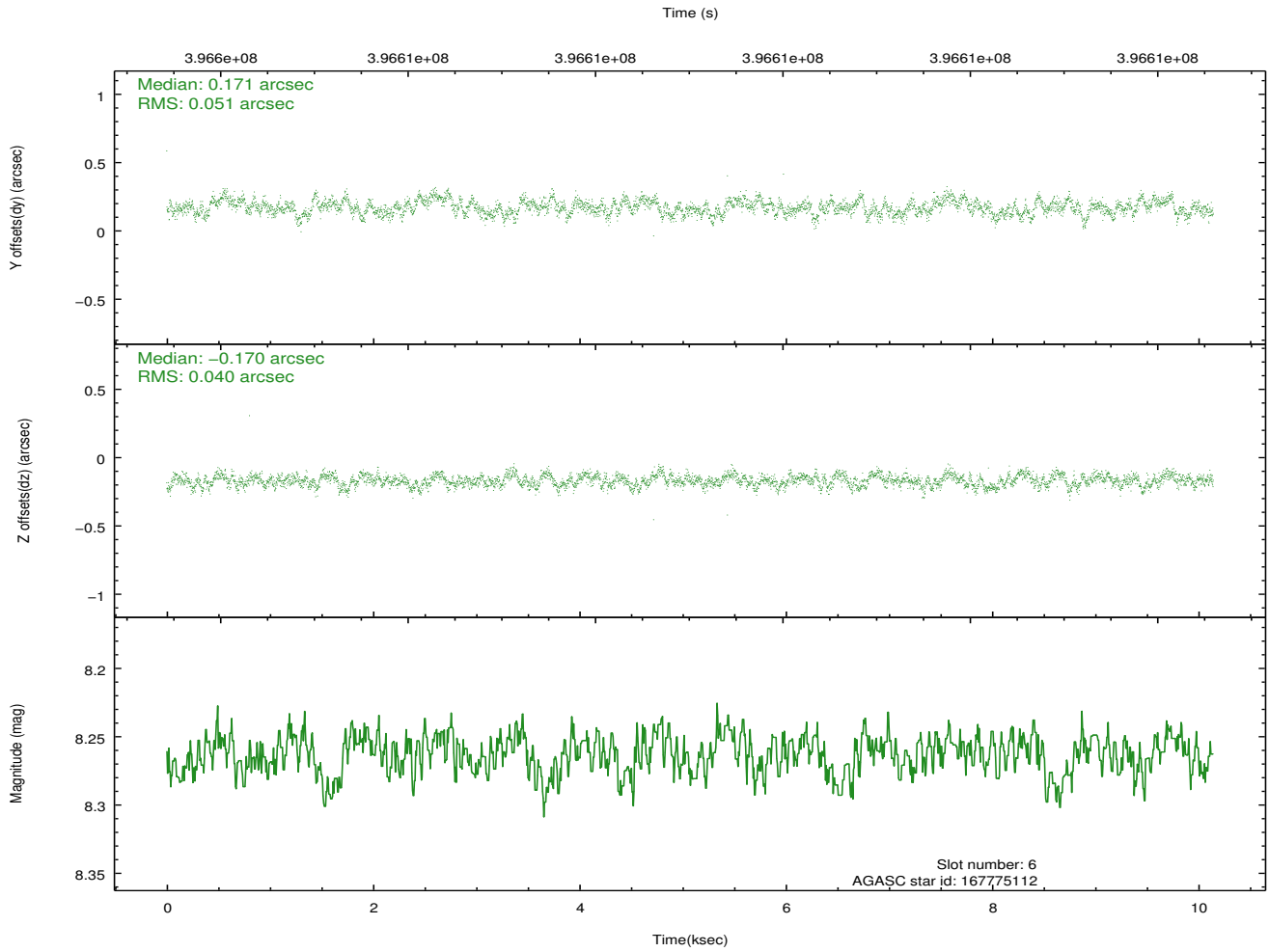
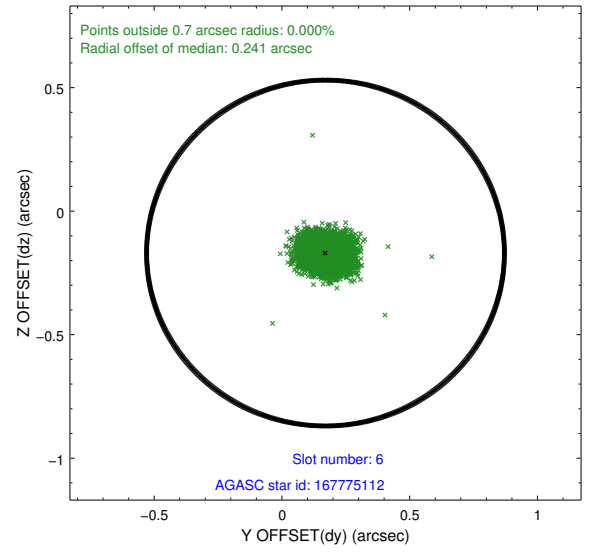
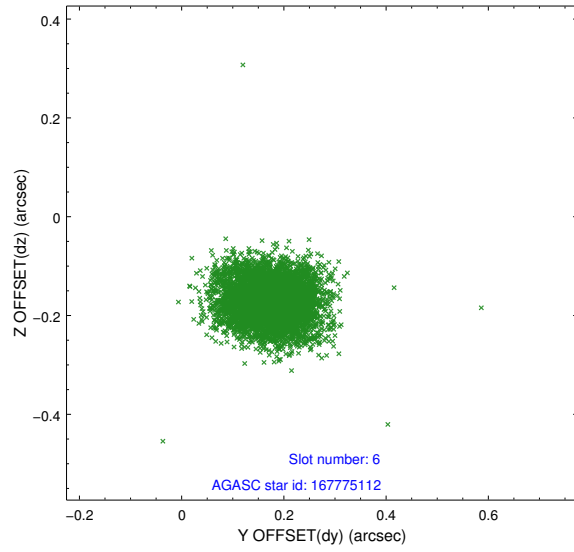
## 2.4.2 Slot 4



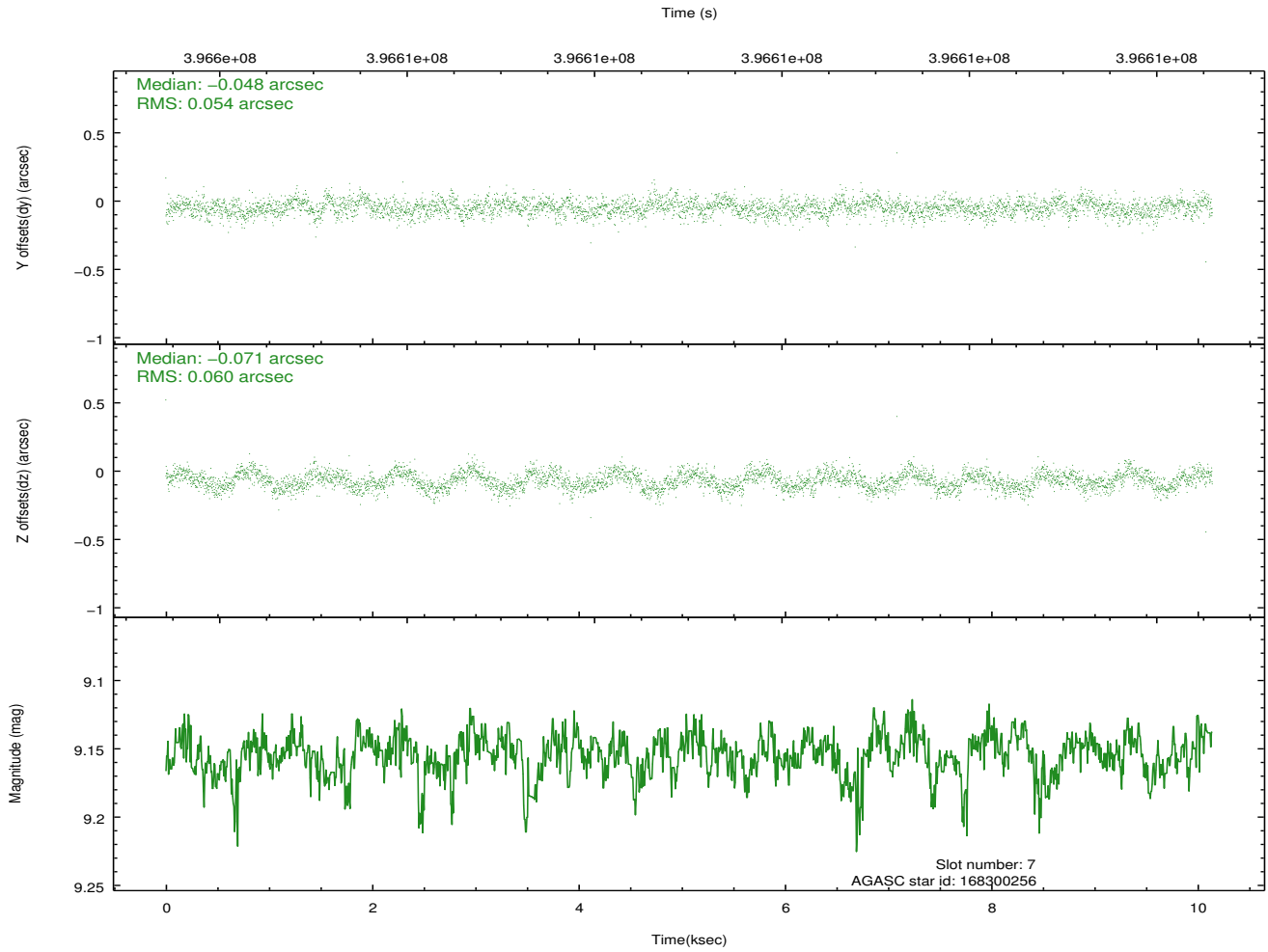
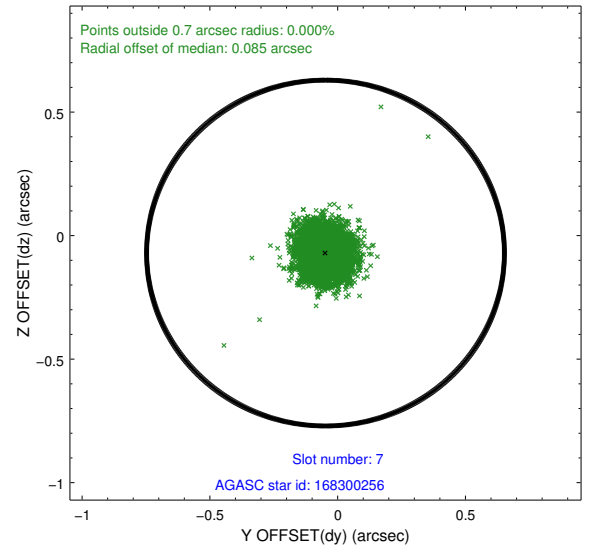
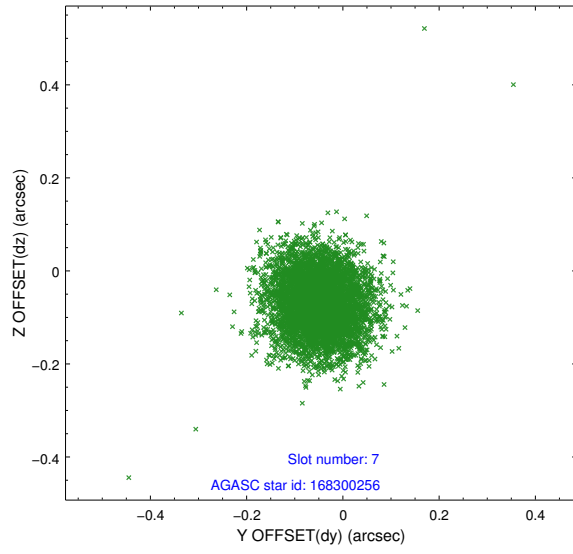
### 2.4.3 Slot 5



## 2.4.4 Slot 6

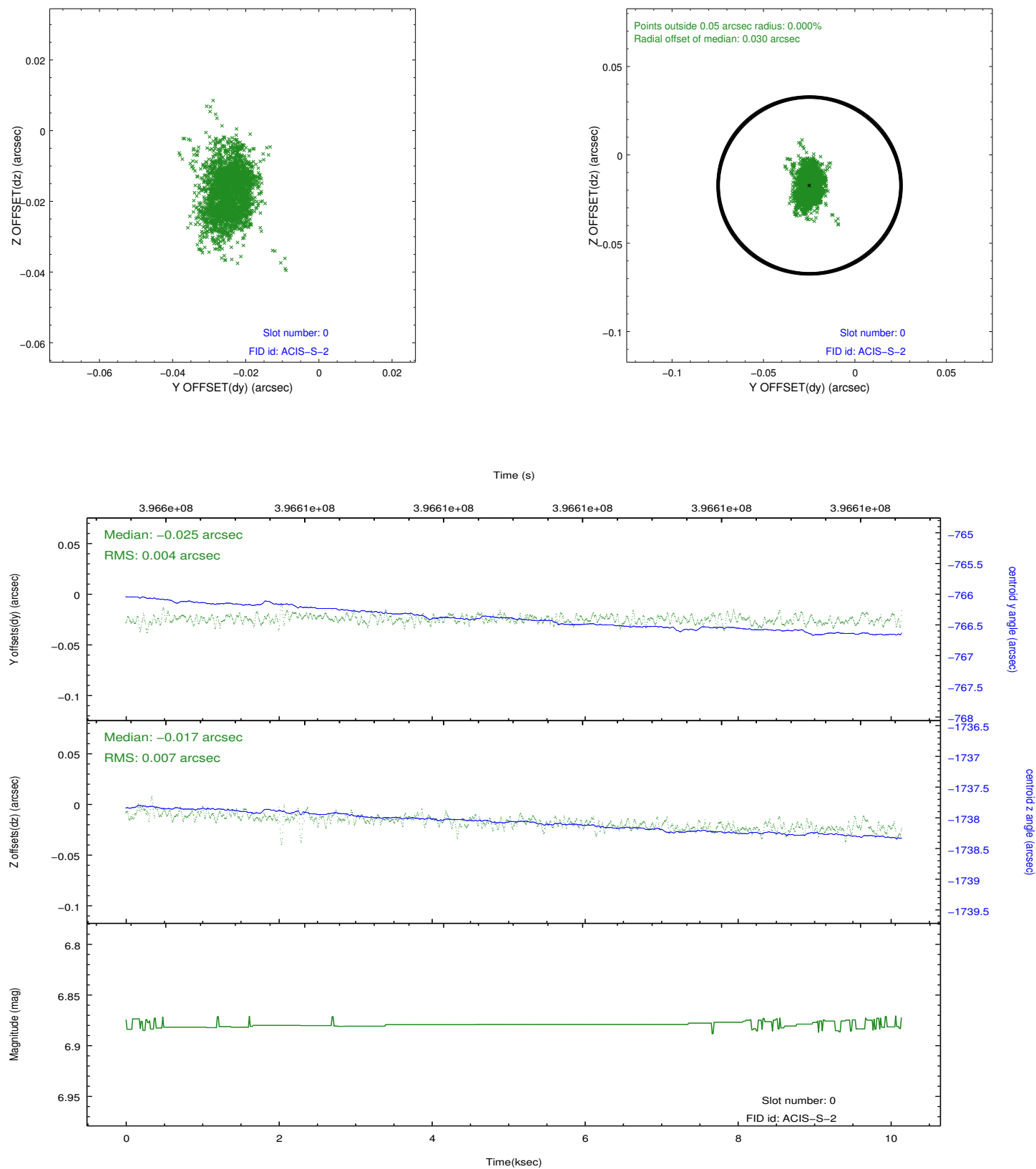


## 2.4.5 Slot 7

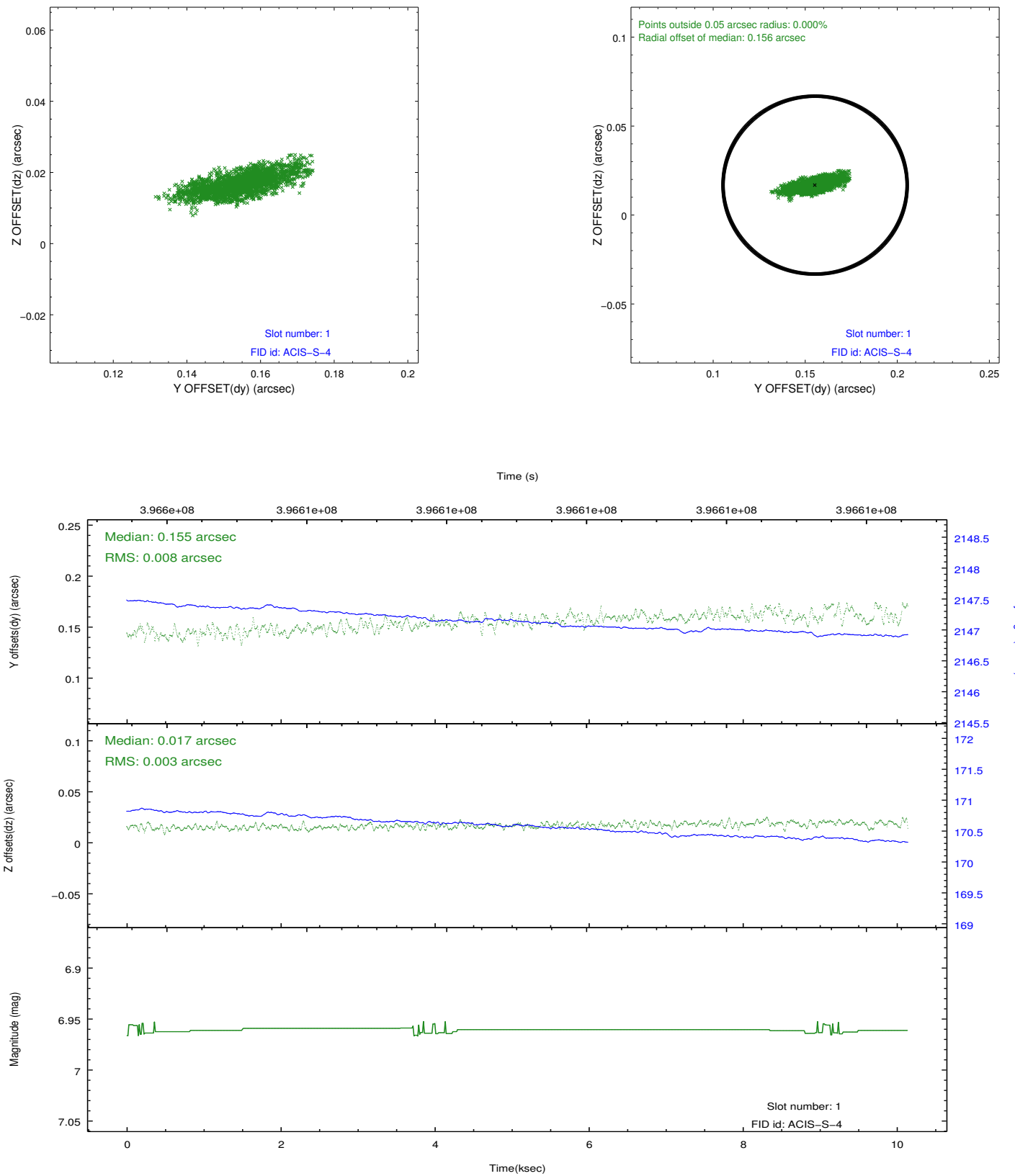


## 2.5 FID Slots

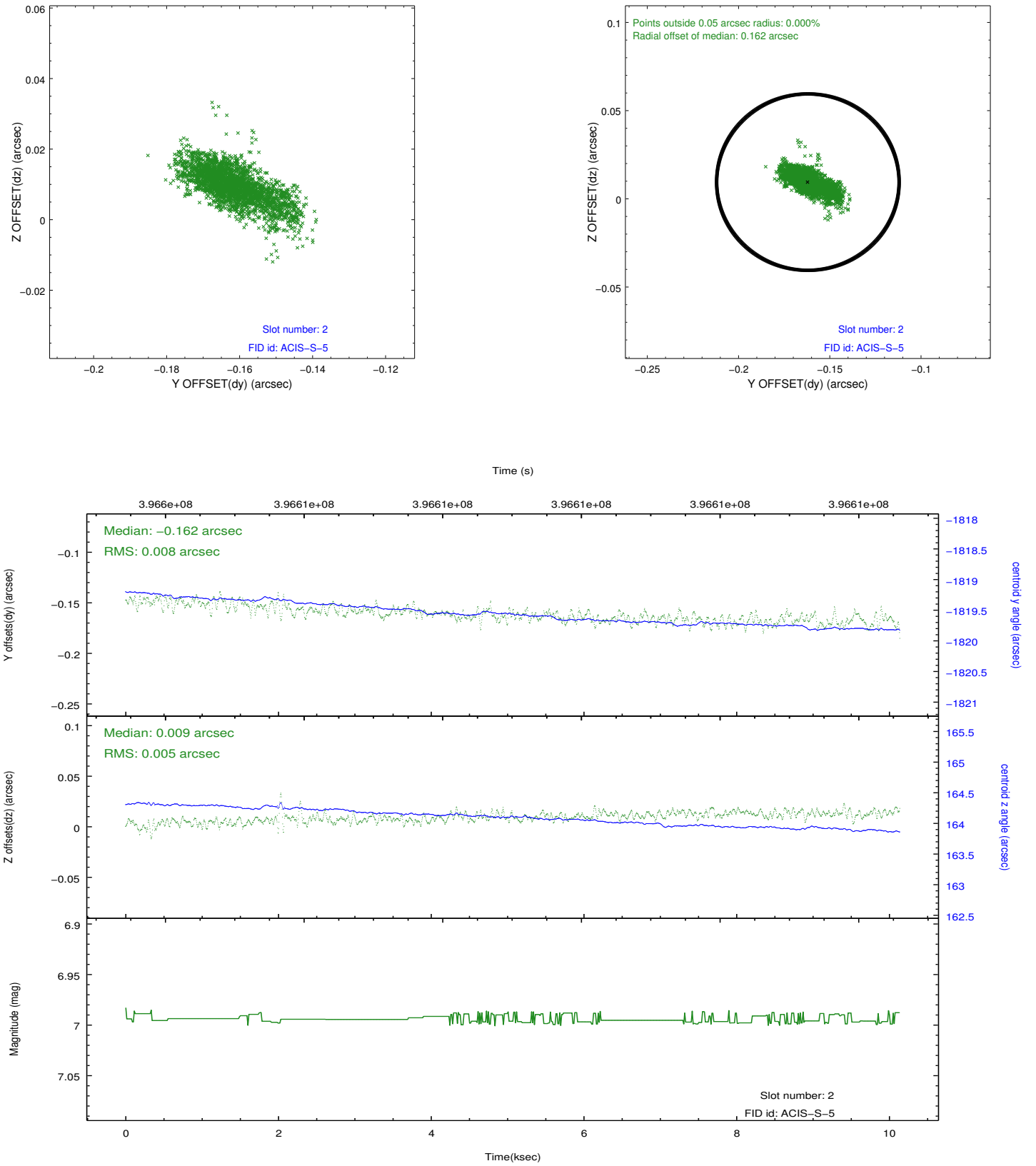
### 2.5.1 Slot 0



## 2.5.2 Slot 1



### 2.5.3 Slot 2



## A Summary

### A.1 Status

V&V Scientist	Jen Lauer
V&V Date (YYYY-MM-DD)	2012.07.09
V&V Edition	1
V&V Disposition and Status	OK
V&V Charge Time	10.096900218844

### A.2 Comments