

V&V Reference Report

L2 ASCDS Version : 8.4.4

Observation 10622 - L2 Version 3
Chandra X-Ray Center

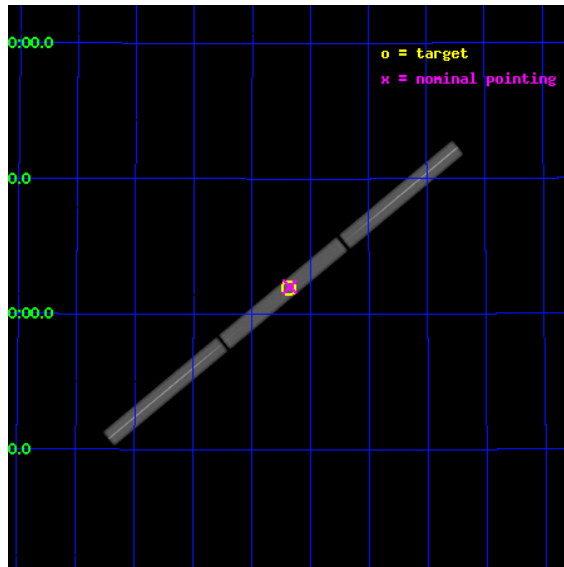
L2 Processing Date : Aug 13 2012

Contents

1	Front	2
2	OBI	3
2.1	OBI	3
2.1.1	Images	3
2.1.2	Parameters	4
2.1.3	Events	4
2.2	Compared Parameters	5
2.3	Aspect	6
2.4	Star Slots	9
2.4.1	Slot 3	9
2.4.2	Slot 4	10
2.4.3	Slot 5	11
2.4.4	Slot 6	12
2.4.5	Slot 7	13
2.5	FID Slots	14
2.5.1	Slot 0	14
2.5.2	Slot 1	15
2.5.3	Slot 2	16
3	Gratings	17
3.1	LETG Arm	17
A	Summary	19
A.1	Status	19
A.2	Comments	19

1 Front

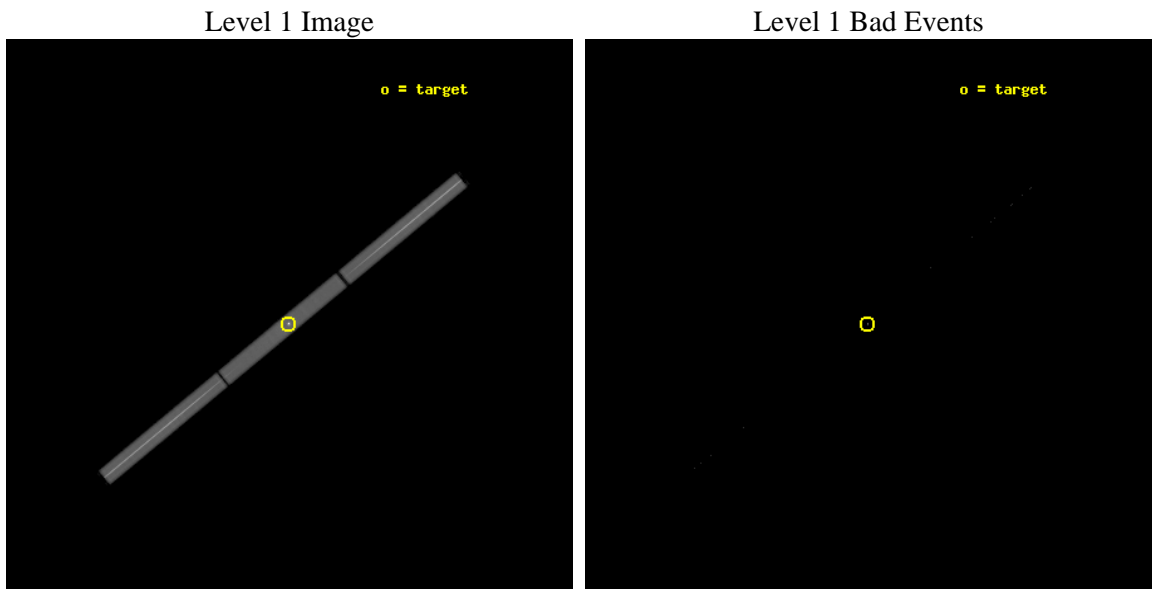
seq_num	290858	Sequence number
obs_id	10622	Observation id
title	AO-10 Calibration Observations of HZ43	Proposal title
observer	Dr. CXC Calibration	Principal investigator
object	HZ43	Source name
ra_targ	199.092083	Observer's specified target RA [deg]
dec_targ	29.099	Observer's specified target Dec [deg]
ra_nom	199.08799114878	Nominal RA [deg]
dec_nom	29.102029369108	Nominal Dec [deg]
roll_nom	140.43266643571	Nominal Roll [deg]
revision	3	Processing version of data
ontime	20154.576001287	[s]
liveltime	19884.092516268	Ontime multiplied by DTCOR
l2events	2581504	Number of level 2 events



2 OBI

2.1 OBI

2.1.1 Images



2.1.2 Parameters

obi_num	0	Obi number	sched_exp_time	20000.000000	[s] Scheduled observation exposure time
ascdsver	8.4.5	Processing system revision	ontime	20154.576001287	[s]
caldsver	4.5.1.1	 	l1events	3288411	Number of level 1 events
date	2012-08-13T06:44:32	Date and time of file creation			
revision	3	Processing version of data			

2.1.3 Events

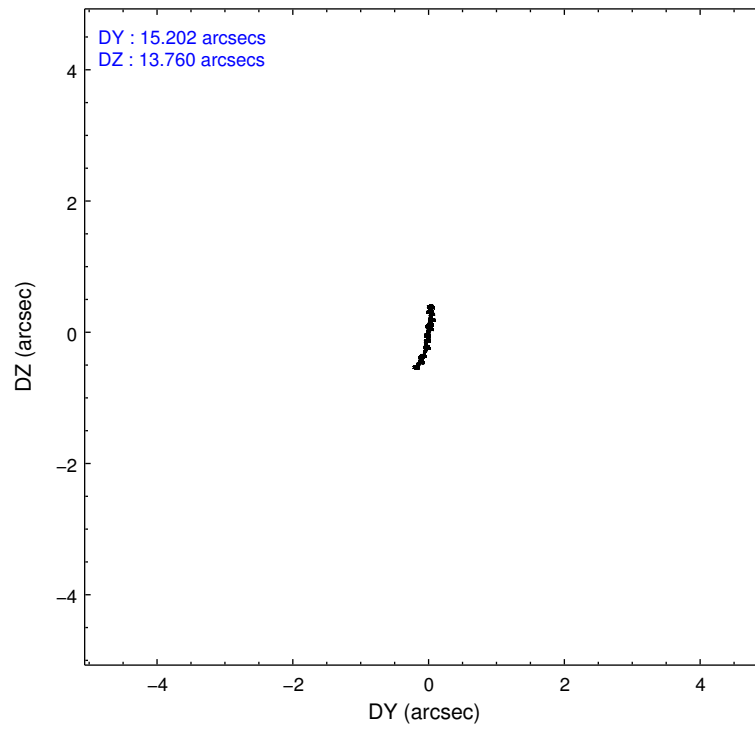
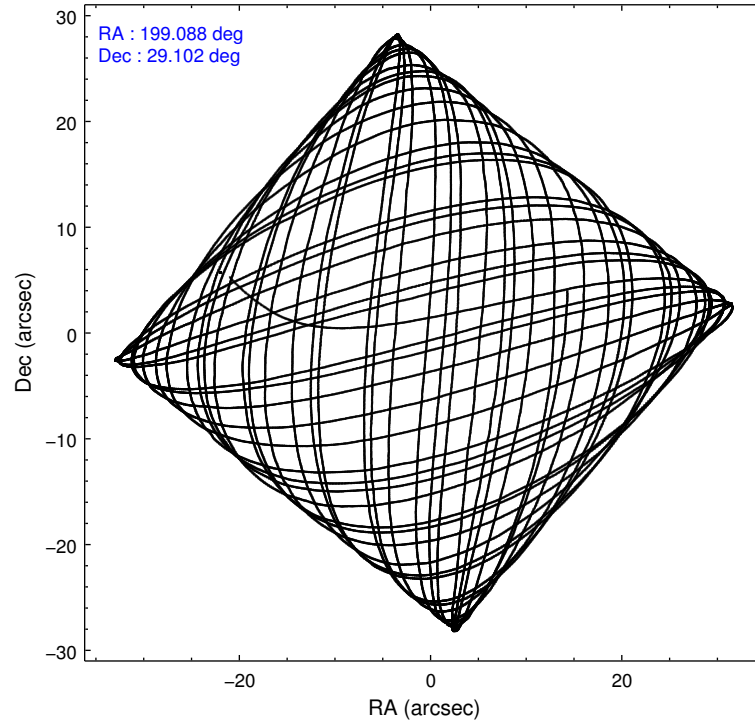
Level 1 Events

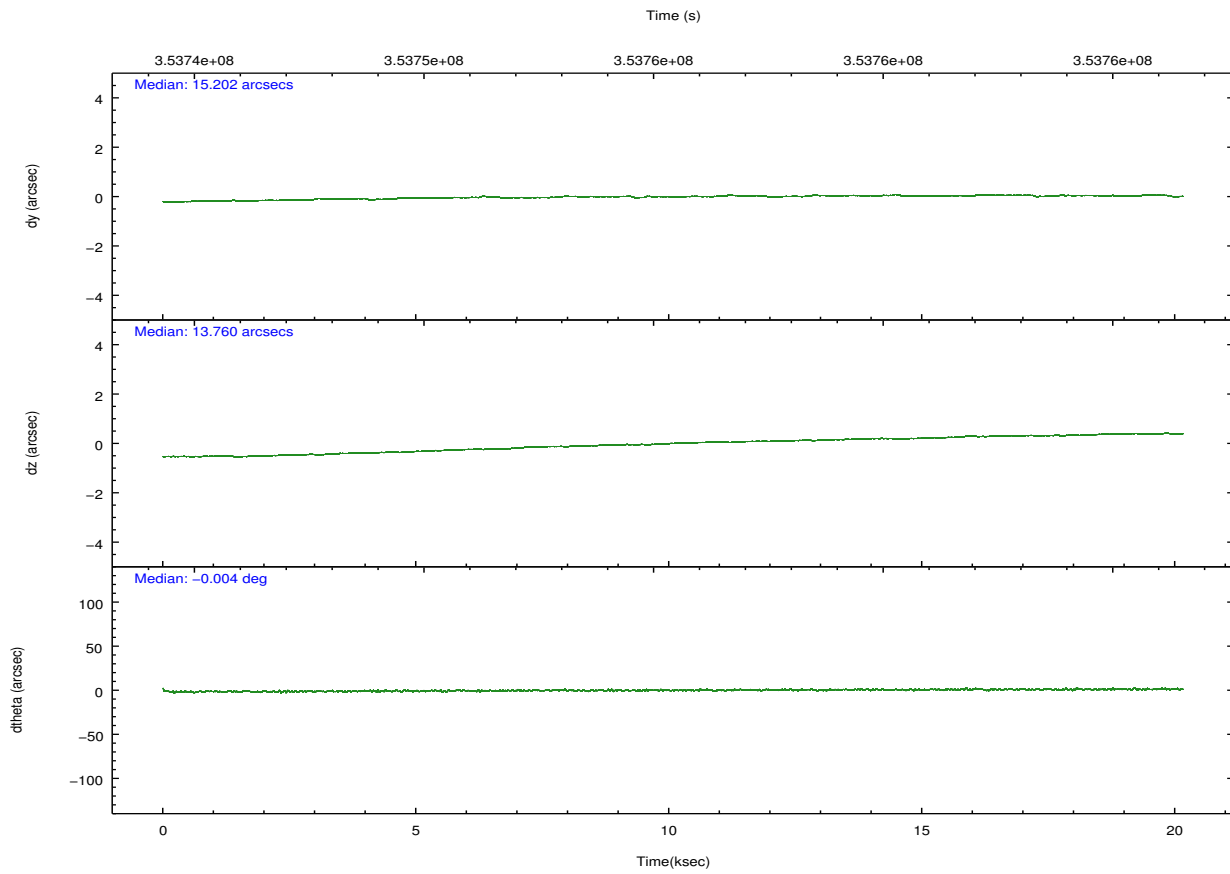
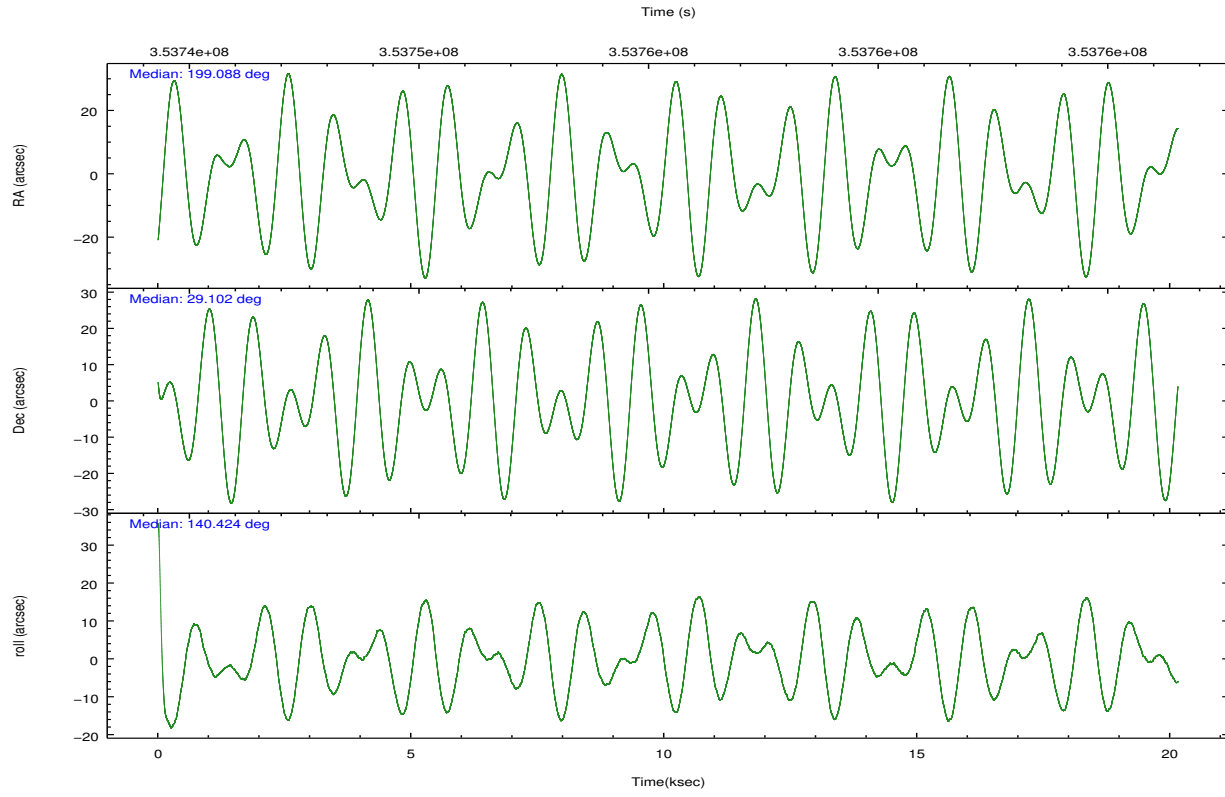
	segment 1	segment 2	segment 3
level 1 events	1129087	1018331	1140993
rejected events	48830	47686	49176
rejected %	4%	4%	4%

2.2 Compared Parameters

Parameter	Planned	Actual	Parameter	Planned	Actual
Instrument	HRC	HRC	Obspar format version number	7	7
Detector	HRC-S	HRC-S	Obspar file type	PREDICTED	ACTUAL
Grating	LETG	LETG	Obspar update status	NONE	UPDATED
Data mode	OBSERVING	OBSERVING			
Observation mode	POINTING	POINTING			
[deg] Pointing RA	199.120565	199.0879911487842			
[deg] Pointing Dec	29.098729	29.10202936910773			
[deg] Pointing Roll	140.349469	140.4326664357102			
[s] Window start time (MET)	349833666.184000	349833666.184000			
[s] Window stop time (MET)	357436866.184000	357436866.184000			
[mm] SIM focus pos	-1.429586	-1.428180813131781			
[mm] SIM defocus	0.1037507710433287	0.1051558262725154			
[mm] SIM translation stage pos	250.455976	250.466033080201			
[mm] SIM translation stage offset	0	-0.01005468664627074			
[s] Observation start time (MET)	353745507.184000	353744222.12428			
Observation start date	2009-03-18T06:37:21	2009-03-18T06:17:02			
[s] Observation end time (MET)	353765507.184000	353766016.18787			
Observation end date	2009-03-18T12:10:41	2009-03-18T12:20:16			

2.3 Aspect



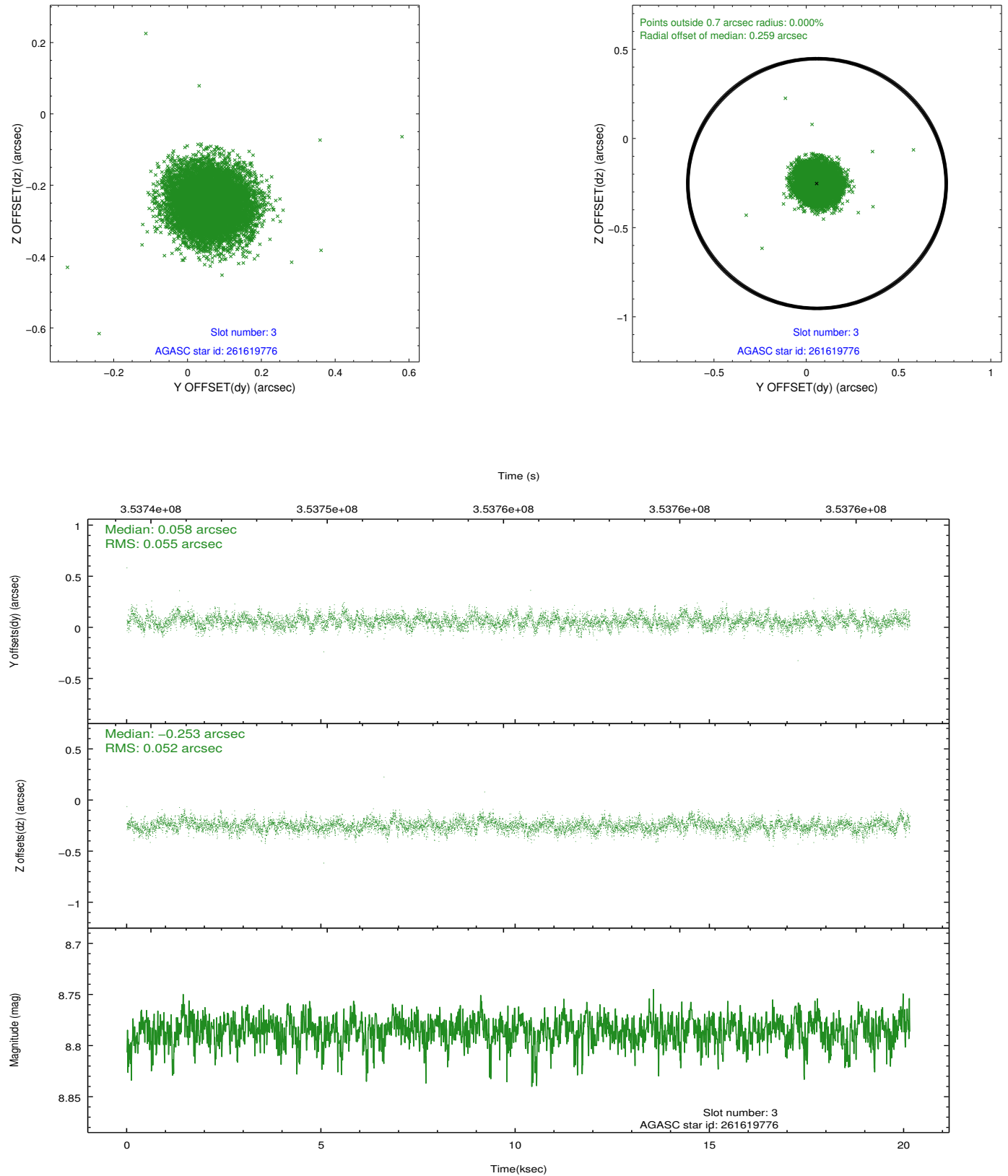


Slot Statistics

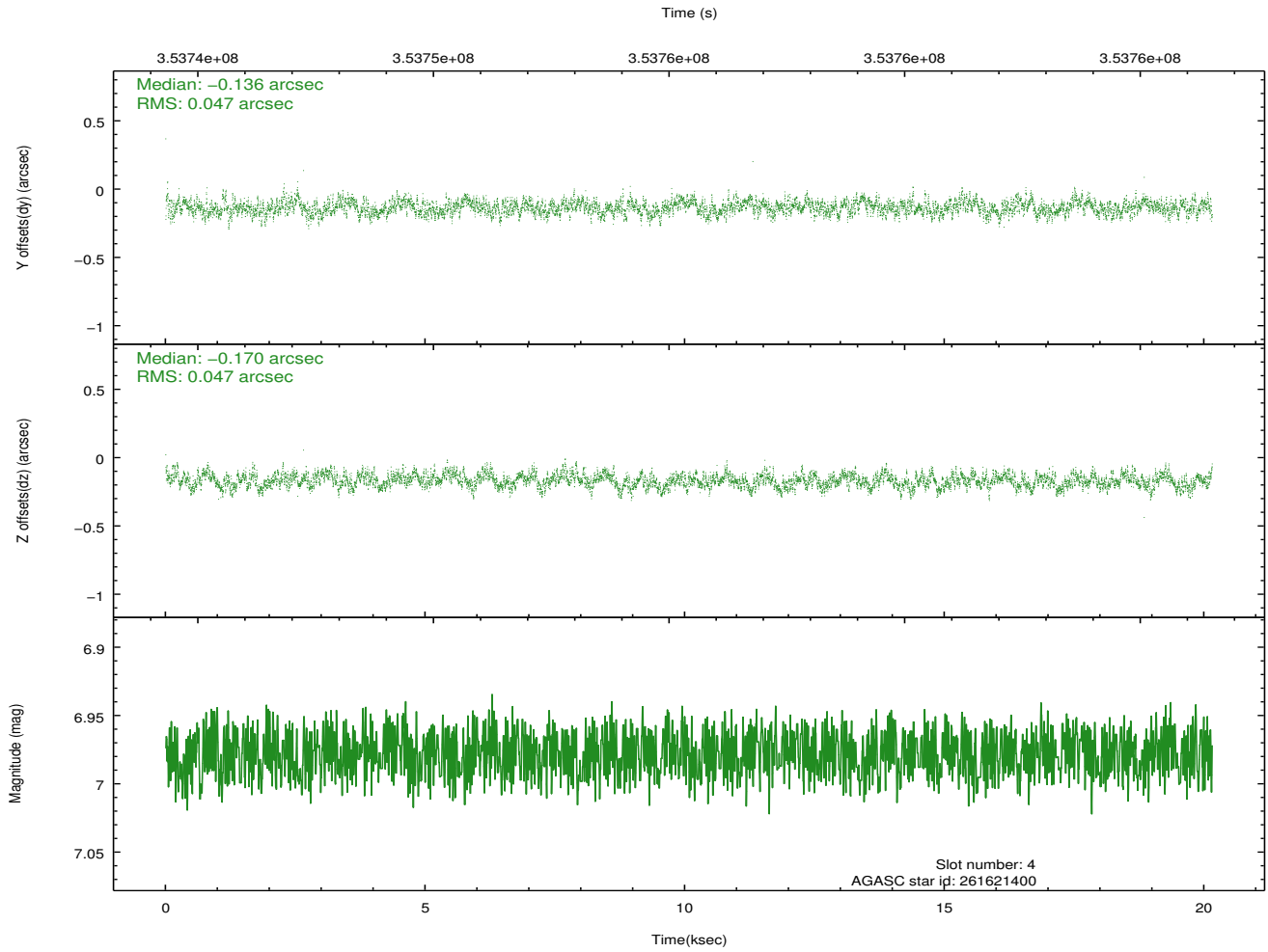
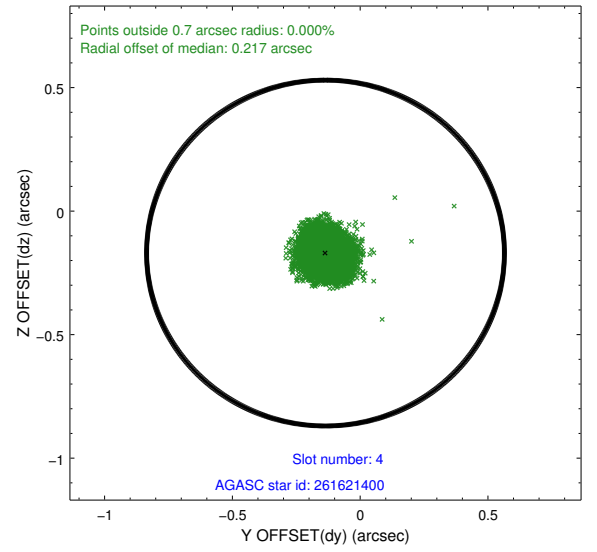
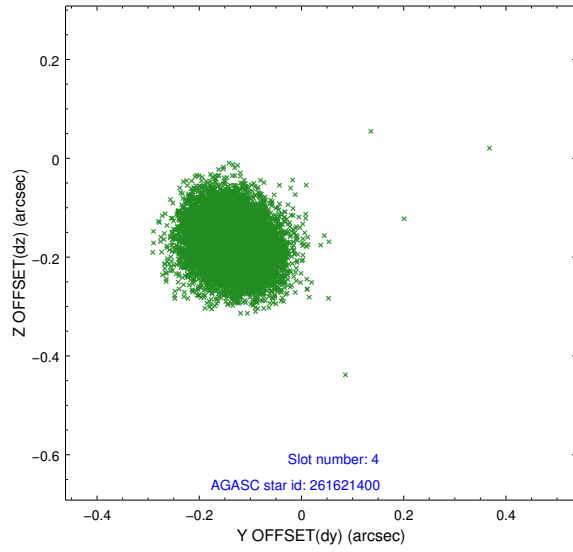
slot	status	id	mag	n_pts	med_dy	med_dz	dr1	dr2	ra	dec	mean_y	mean_z
0	FID	HRC-S-1	7.02	4915	0.065	-0.189	0.016	0.026	0.000000	0.000000	-1169.60	-462.57
1	FID	HRC-S-2	7.01	4916	0.219	-0.111	0.006	0.011	0.000000	0.000000	1229.99	-455.22
2	FID	HRC-S-3	7.03	4916	0.105	-0.002	0.017	0.028	0.000000	0.000000	-1172.04	567.05
3	GUIDE	261619776	8.79	9829	0.058	-0.253	0.080	0.130	198.654383	29.401174	1822.39	92.47
4	GUIDE	261621400	6.98	9828	-0.136	-0.170	0.071	0.112	198.901600	28.741982	-286.24	1429.40
5	GUIDE	261623040	9.13	9823	-0.108	0.130	0.110	0.178	198.792686	29.757643	2304.19	-1173.01
6	GUIDE	261629720	8.12	9831	0.106	0.199	0.072	0.114	199.236176	29.044452	-403.79	-81.79
7	GUIDE	261626376	9.70	9805	0.074	0.090	0.135	0.220	198.947288	29.347445	991.23	-342.34

2.4 Star Slots

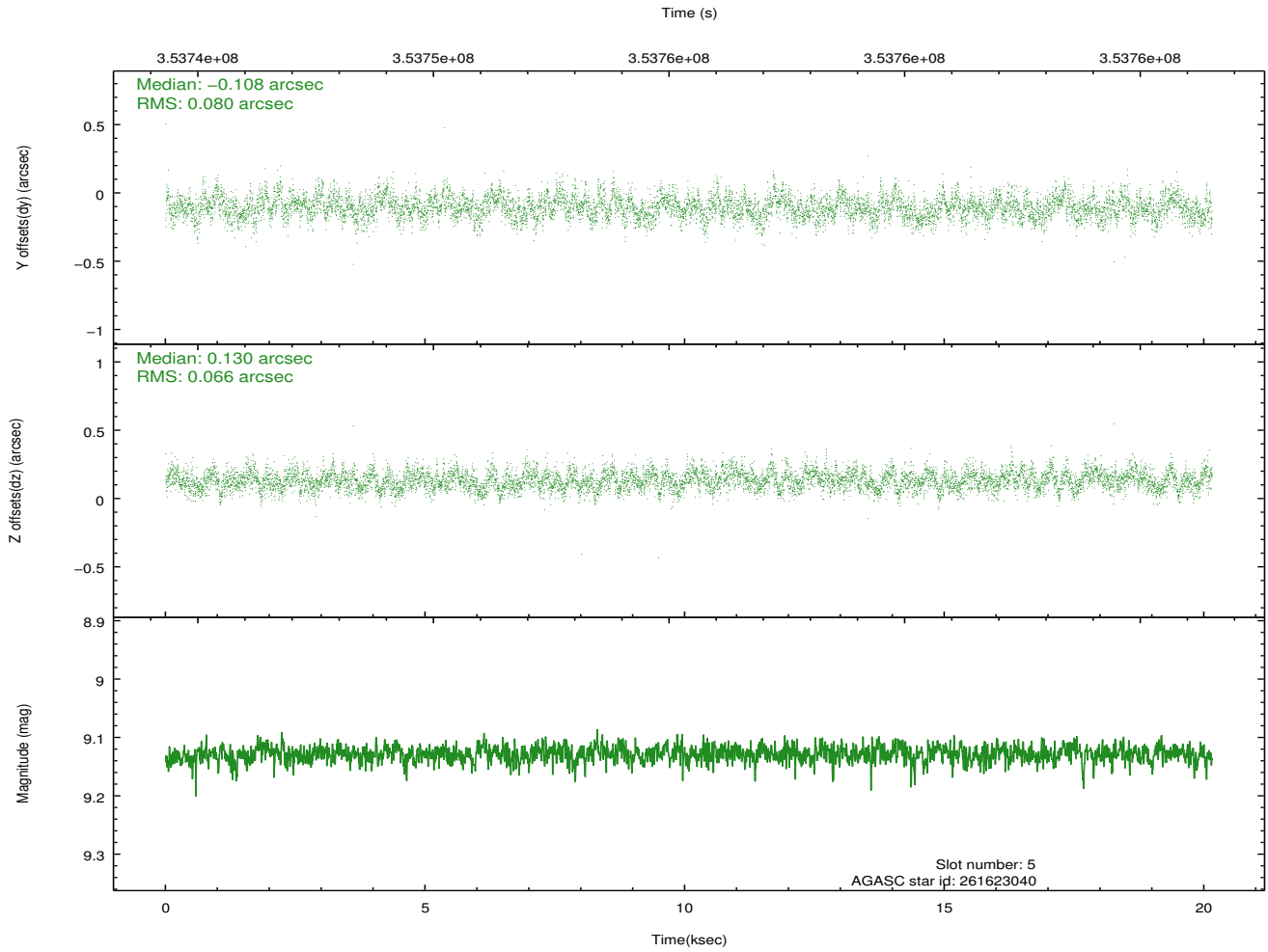
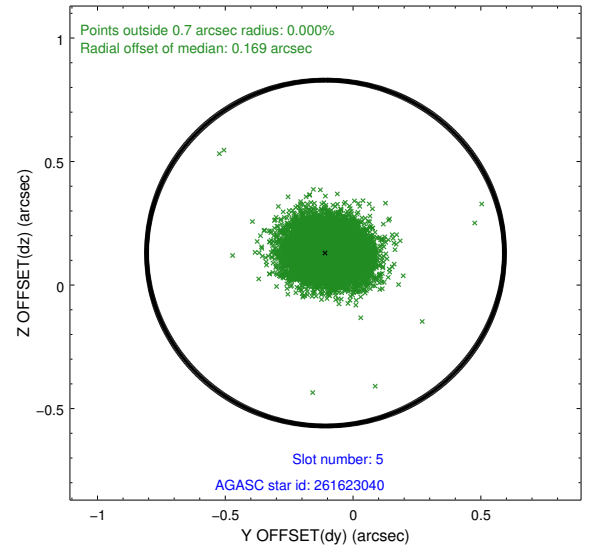
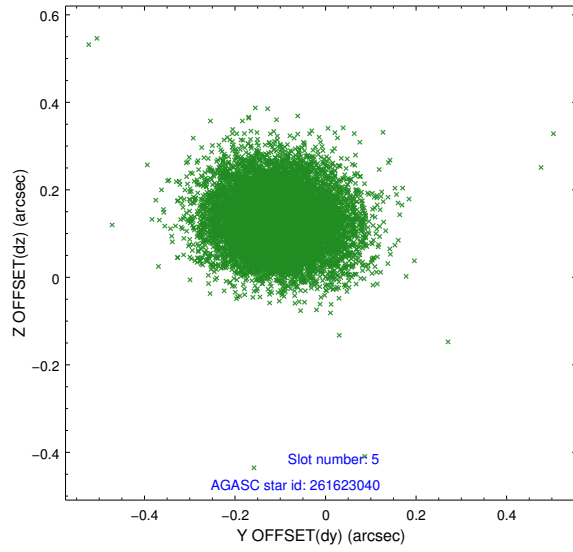
2.4.1 Slot 3



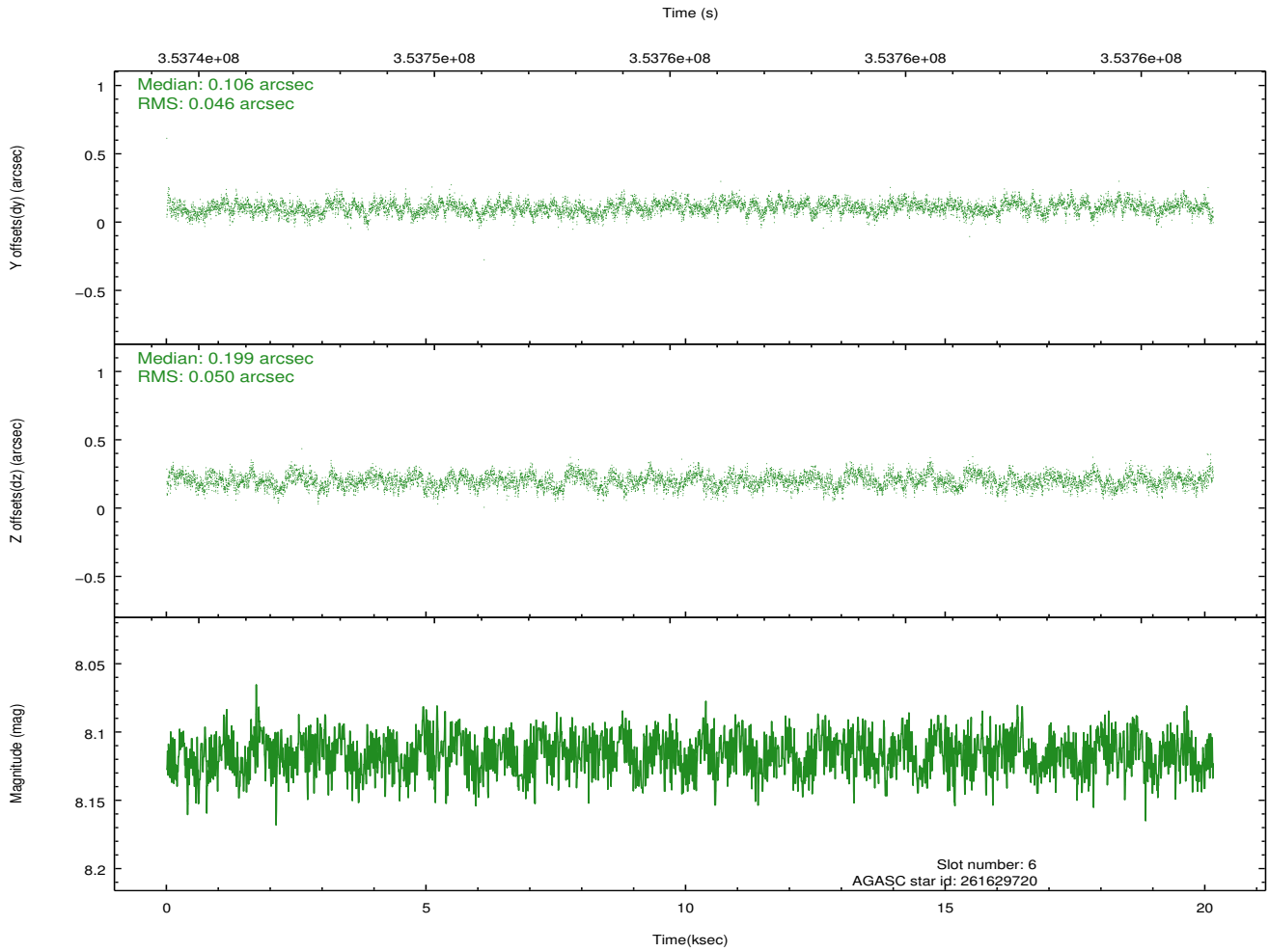
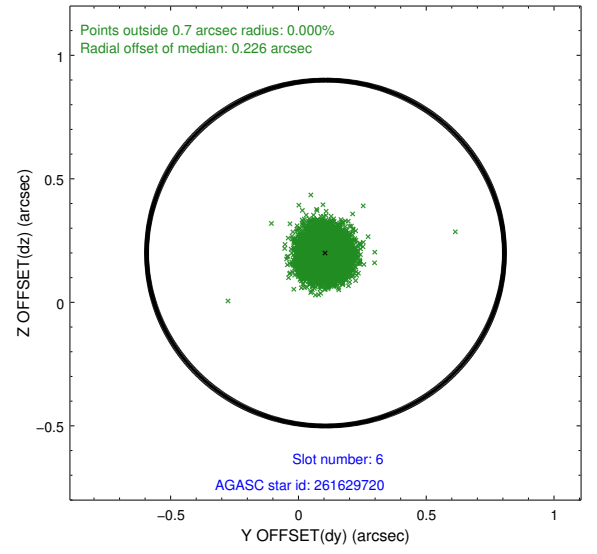
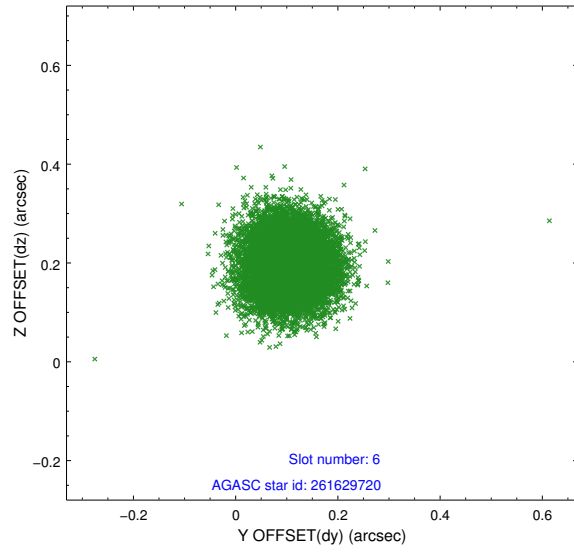
2.4.2 Slot 4



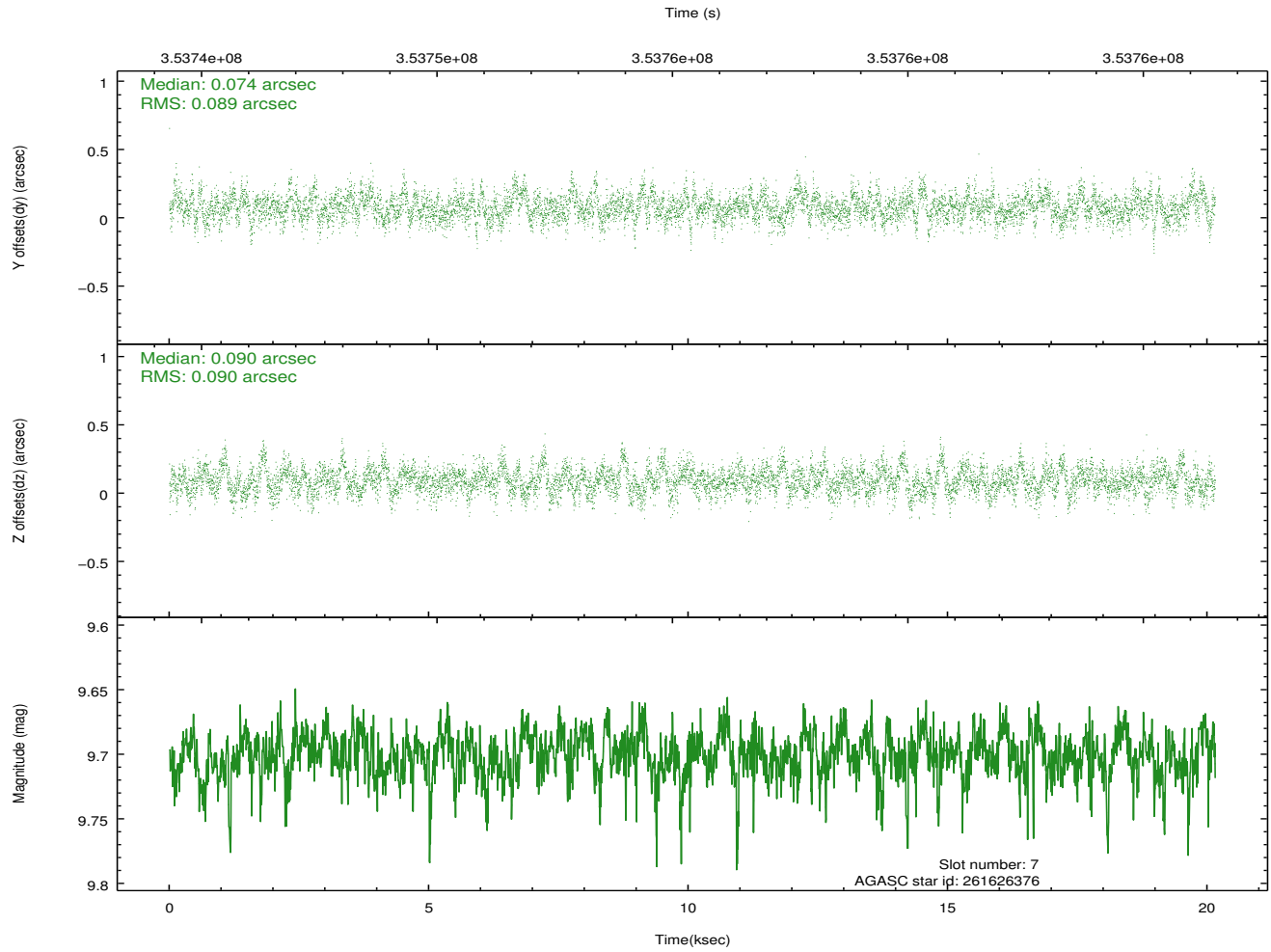
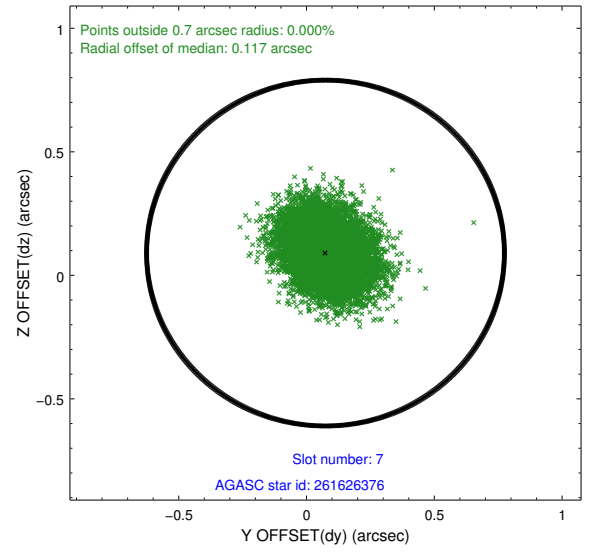
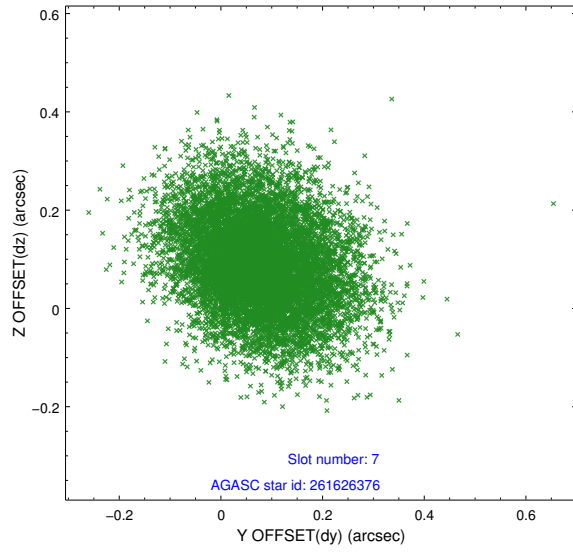
2.4.3 Slot 5



2.4.4 Slot 6

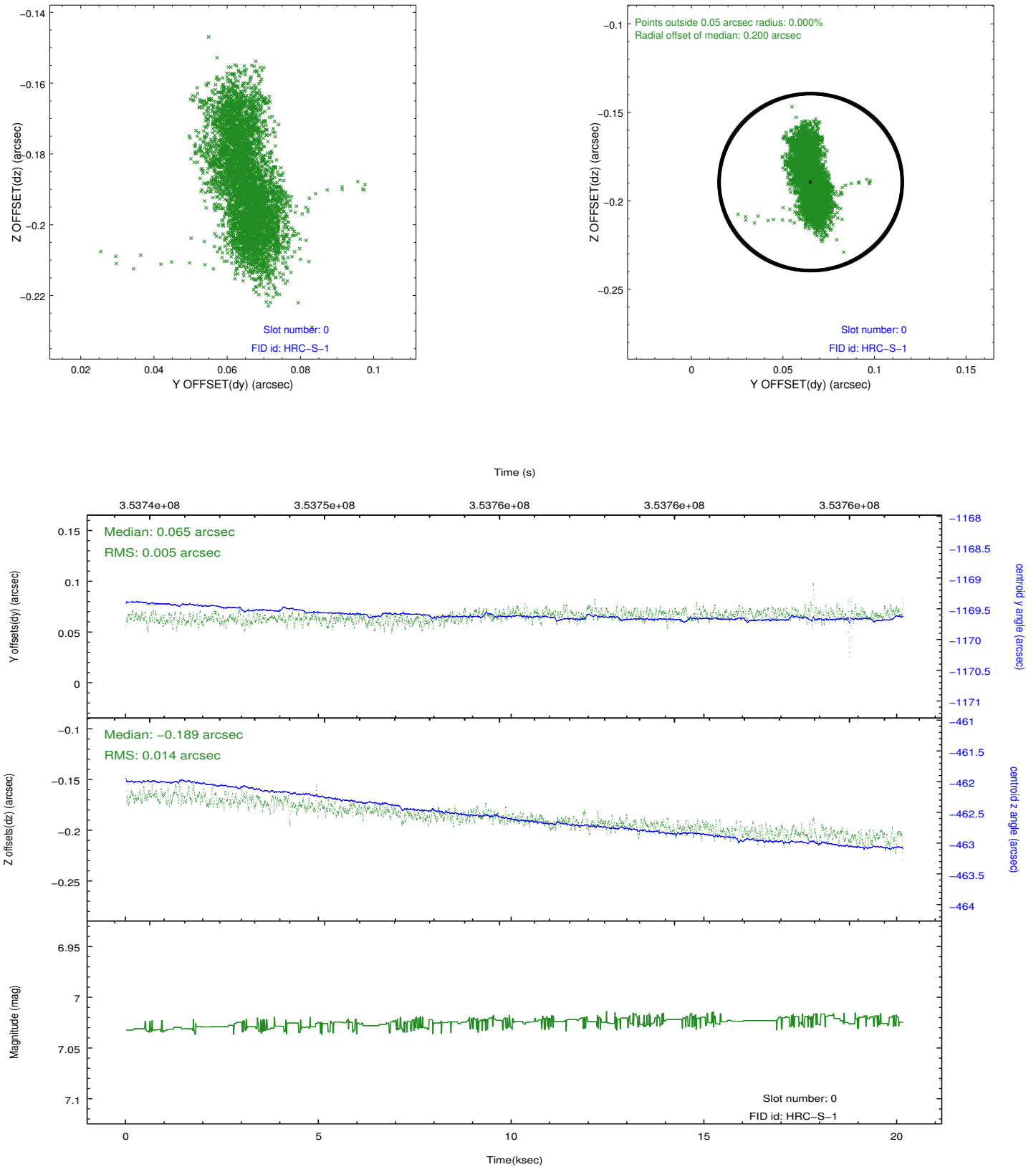


2.4.5 Slot 7

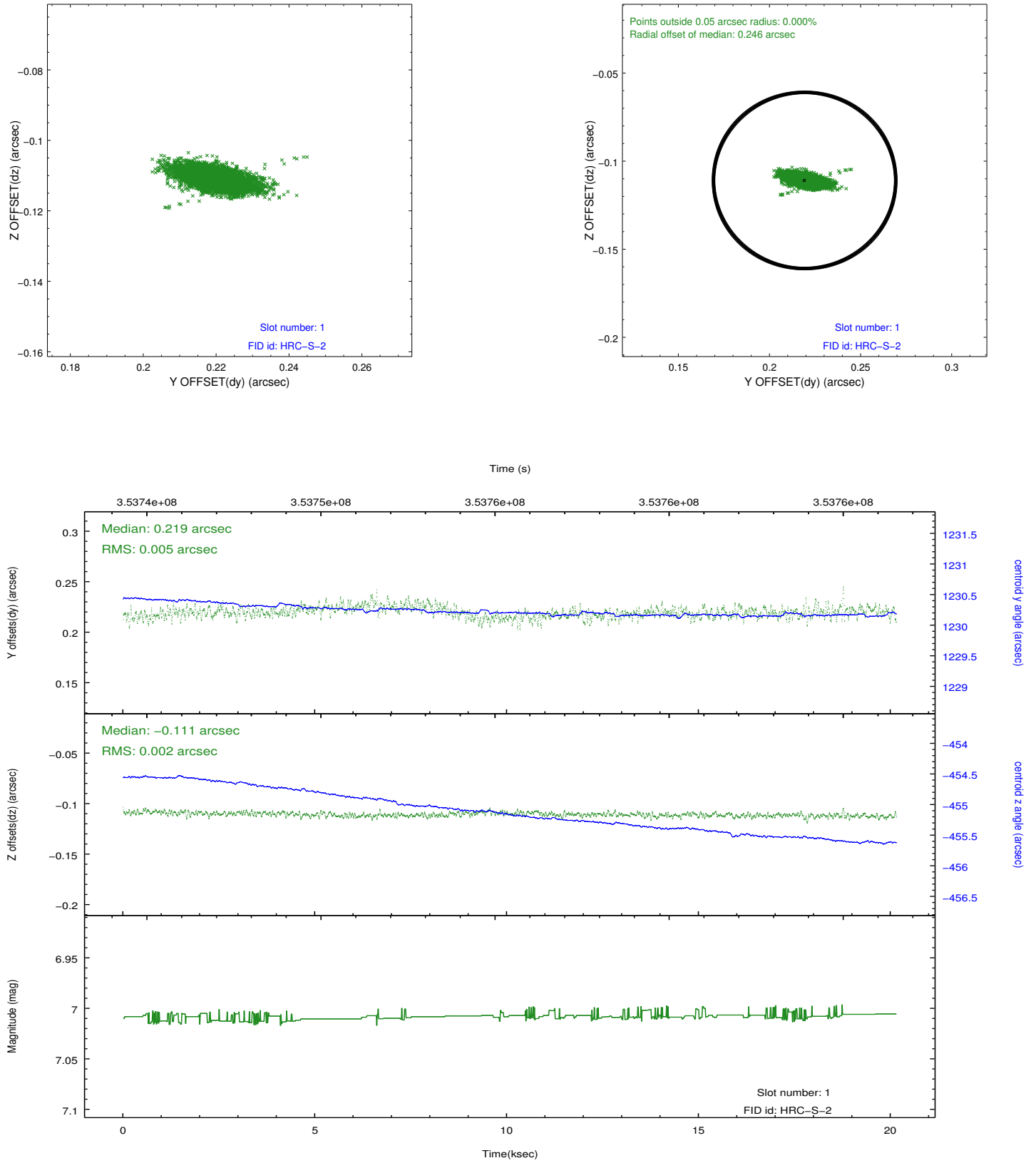


2.5 FID Slots

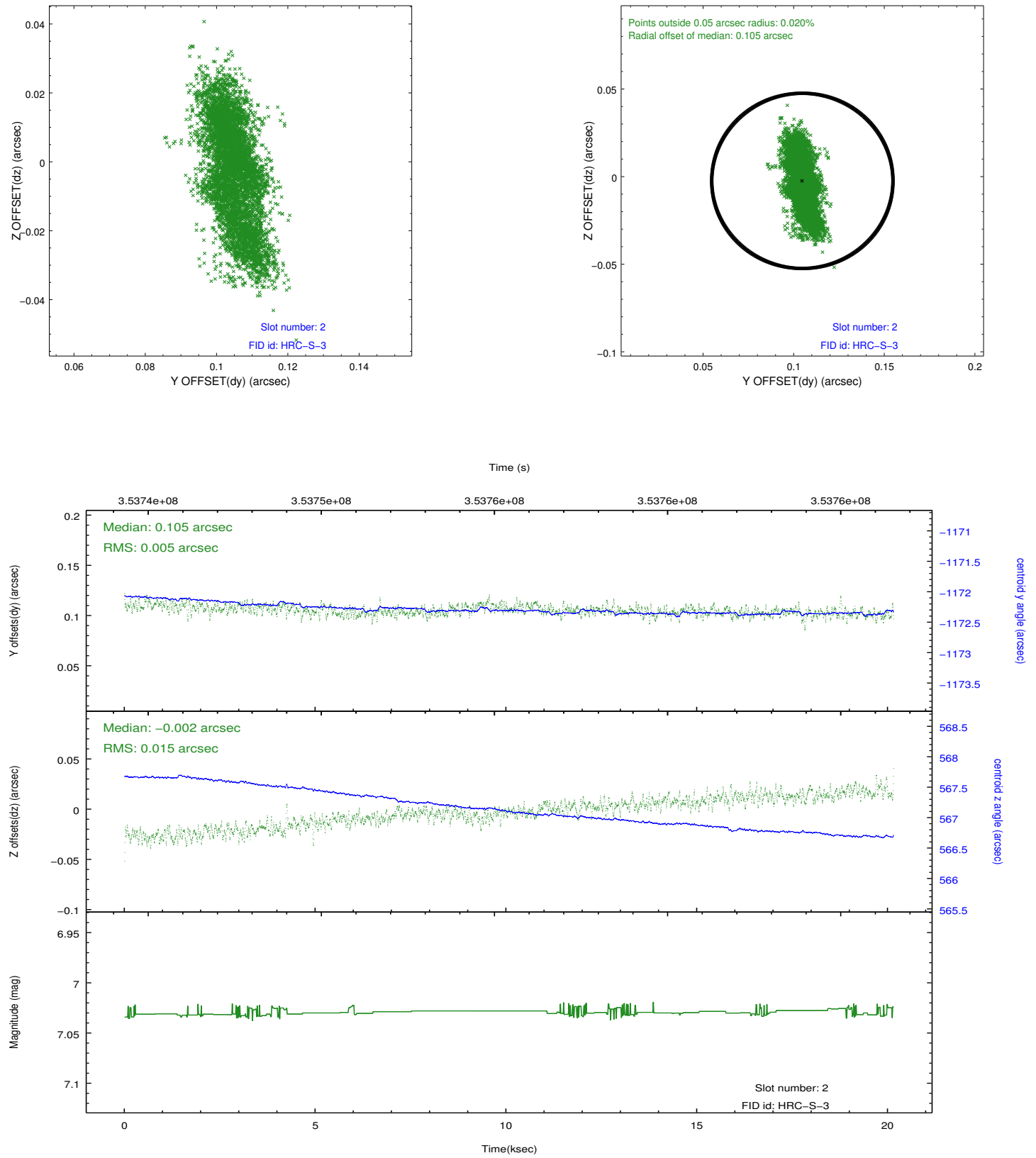
2.5.1 Slot 0



2.5.2 Slot 1

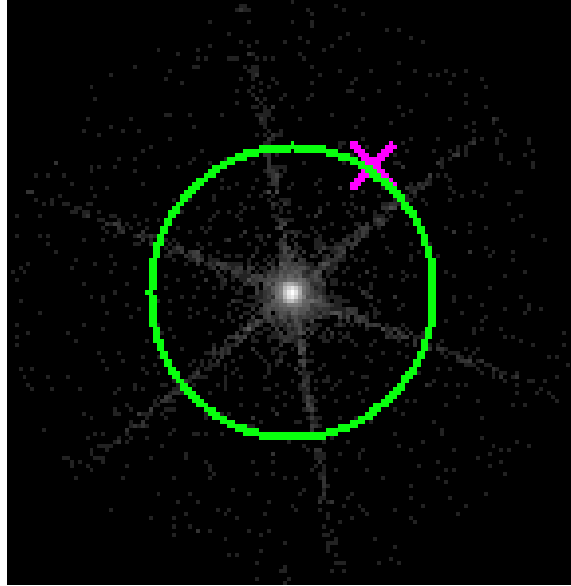


2.5.3 Slot 2

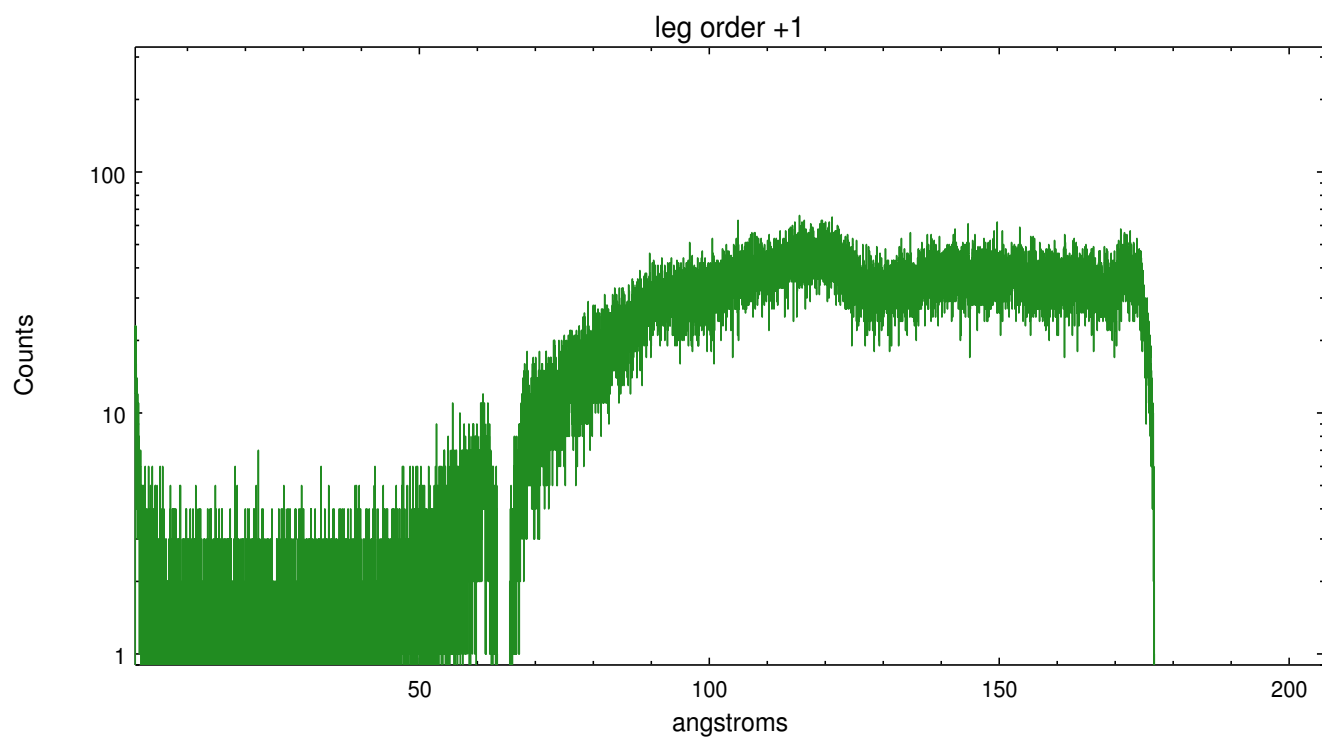
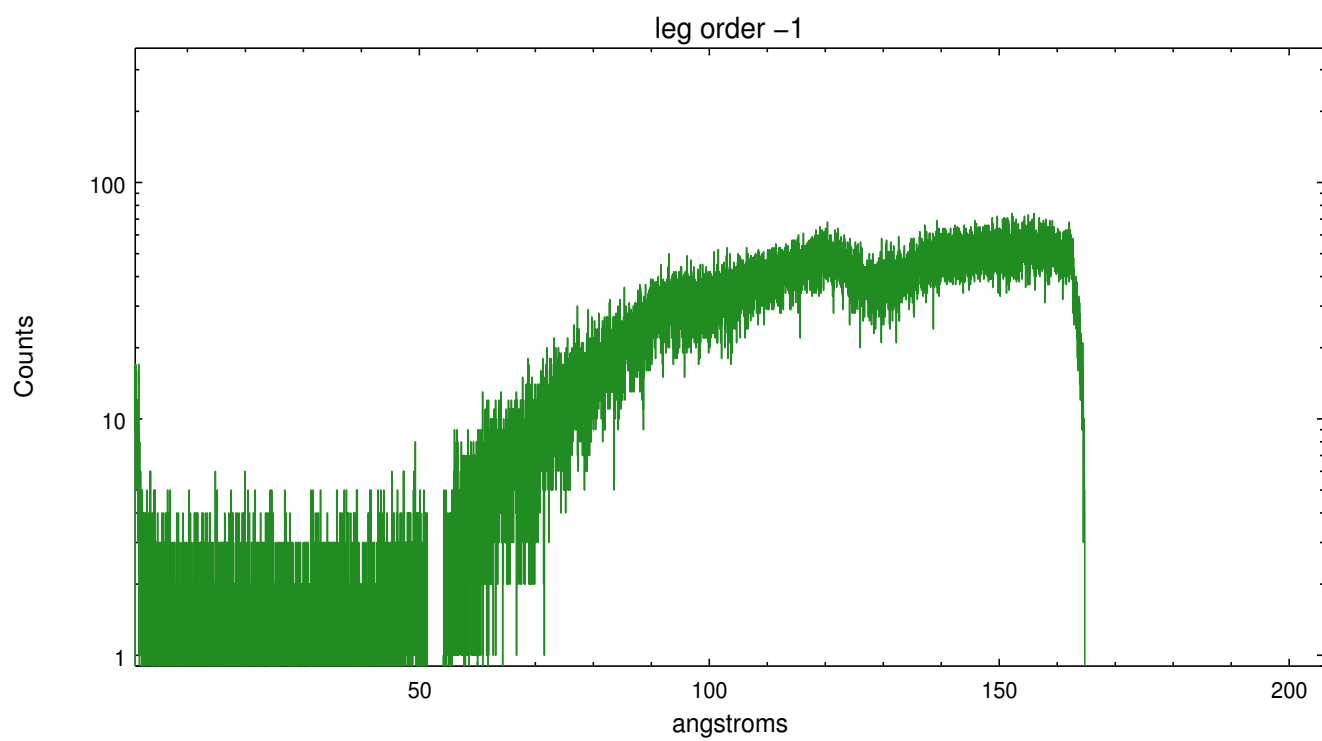


3 Gratings

3.1 LETG Arm



LETG Zero Order



A Summary

A.1 Status

V&V Scientist	Joy Nichols
V&V Date (YYYY-MM-DD)	2012.08.21
V&V Edition	1
V&V Disposition and Status	OK
V&V Charge Time	20.154576

A.2 Comments