

V&V Reference Report

L2 ASCDS Version : 8.4.4

Observation 10492 - L2 Version 2
Chandra X-Ray Center

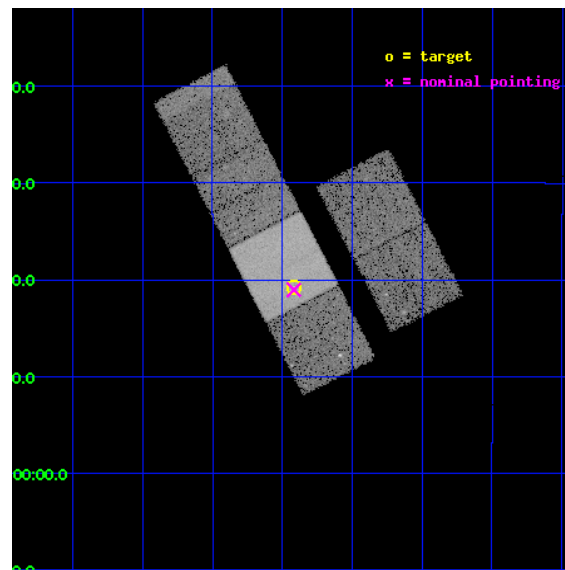
L2 Processing Date : Jun 4 2012

Contents

1	Front	2
2	OBI	3
2.1	OBI	3
2.1.1	Images	3
2.1.2	Bias	3
2.1.3	Parameters	4
2.1.4	Events	4
2.2	Compared Parameters	5
2.3	Aspect	6
2.4	Star Slots	9
2.4.1	Slot 3	9
2.4.2	Slot 4	10
2.4.3	Slot 5	11
2.4.4	Slot 6	12
2.4.5	Slot 7	13
2.5	FID Slots	14
2.5.1	Slot 0	14
2.5.2	Slot 1	15
2.5.3	Slot 2	16
A	Summary	17
A.1	Status	17
A.2	Comments	17

1 Front

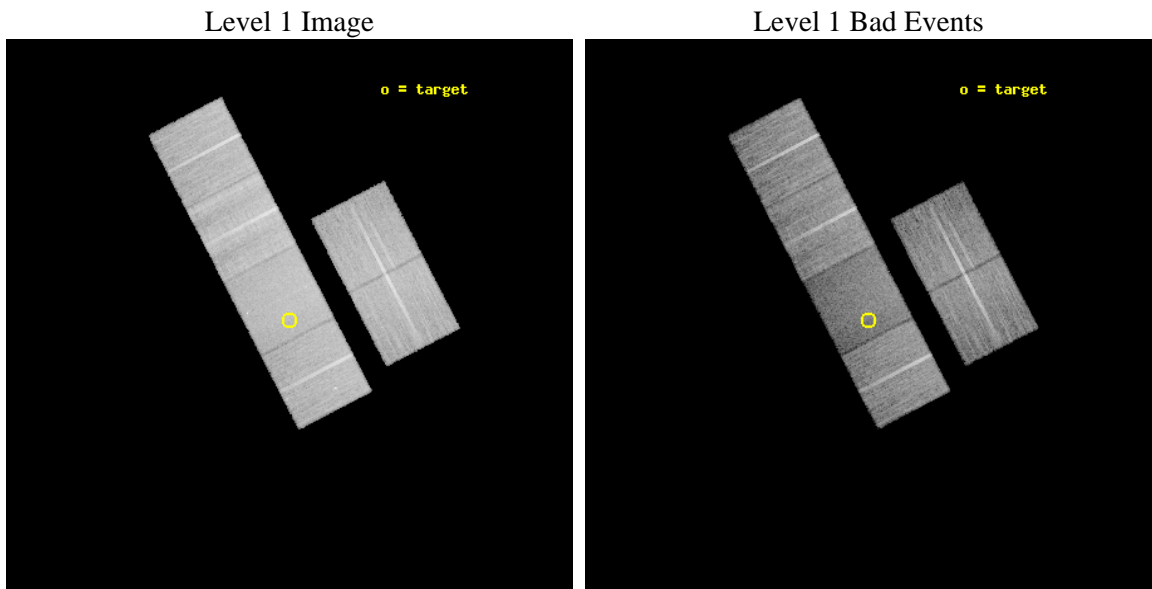
seq_num	900863	Sequence number
obs_id	10492	Observation id
title	Identifying the host galaxies for optically dark gamma-ray bursts	
observer	Dr Andrew Levan	Principal investigator
object	GRB090407	Source name
dtcycle	0	
cycle	P	events from which exps? Prim/Second/Both
ra_targ	68.979083	Observer's specified target RA [deg]
dec_targ	-12.679306	Observer's specified target Dec [deg]
ra_nom	68.979490156877	Nominal RA [deg]
dec_nom	-12.684138462581	Nominal Dec [deg]
roll_nom	242.56952728879	Nominal Roll [deg]
revision	2	Processing version of data
ontime	15155.199943602	Sum of GTIs [s]
livetime	14963.29567655	Livetime [s]
ontime2	15155.199943602	Sum of GTIs [s]
ontime3	15151.958973348	Sum of GTIs [s]
ontime6	15151.958923399	Sum of GTIs [s]
ontime7	15155.199943602	Sum of GTIs [s]
ontime8	15148.717953205	Sum of GTIs [s]
ontime9	15155.199943602	Sum of GTIs [s]
l2events	126174	Number of level 2 events



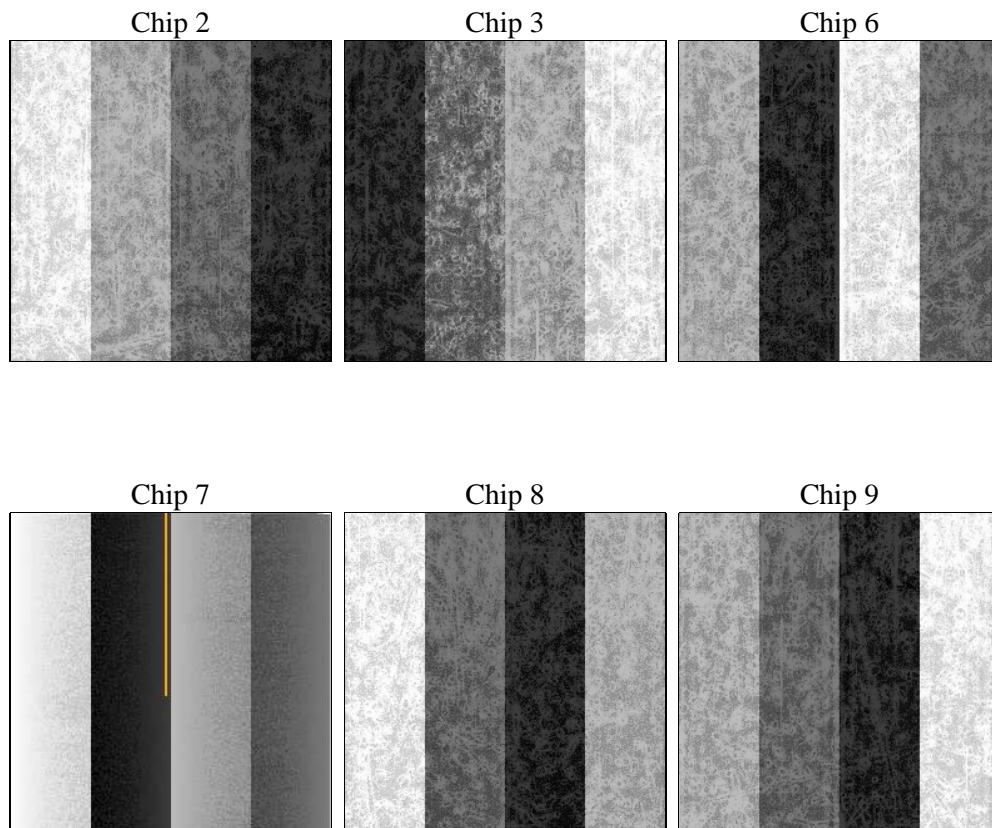
2 OBI

2.1 OBI

2.1.1 Images



2.1.2 Bias



2.1.3 Parameters

obi_num	0	Obi number	sched_exp_time	15000.000000	[s] Scheduled observation exposure time
ascdsver	8.4.4	Processing system revision	ontime	15155.199943602	Sum of GTIs [s]
caldsver	4.4.9	 	ontime2	15155.199943602	Sum of GTIs [s]
date	2012-06-04T15:14:55	Date and time of file creation	ontime3	15151.958973348	Sum of GTIs [s]
revision	2	Processing version of data	ontime6	15151.958923399	Sum of GTIs [s]
			ontime7	15155.199943602	Sum of GTIs [s]
			ontime8	15148.717953205	Sum of GTIs [s]
			ontime9	15155.199943602	Sum of GTIs [s]
			l1events	845497	Number of level 1 events

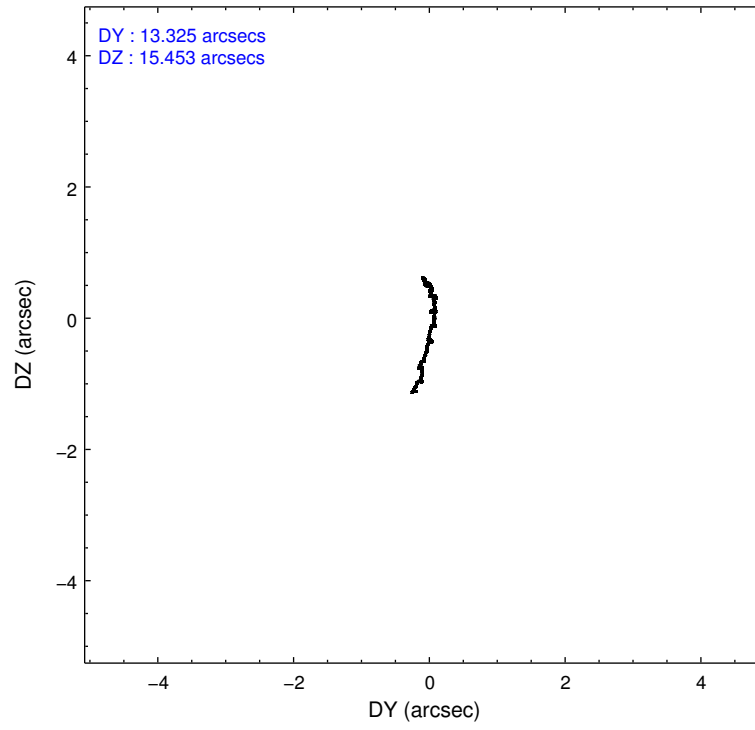
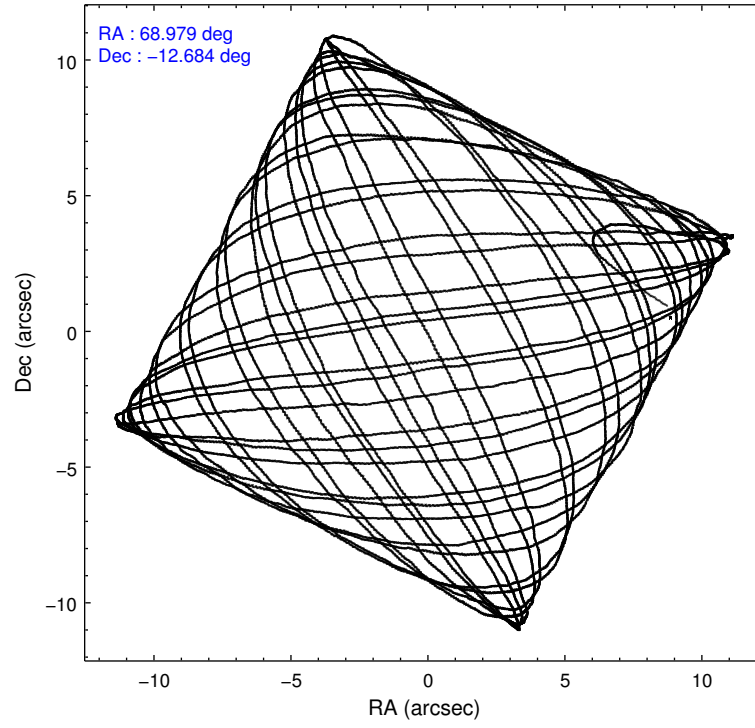
2.1.4 Events

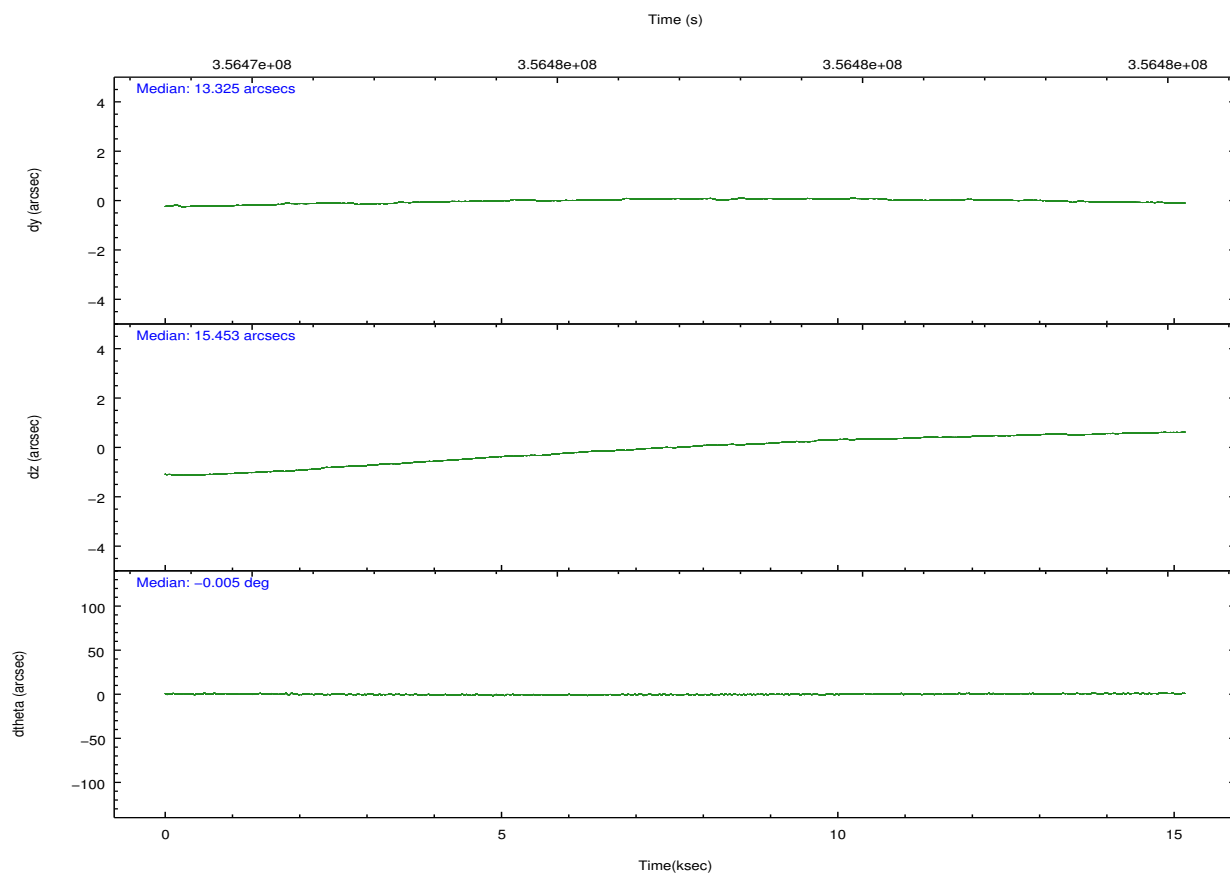
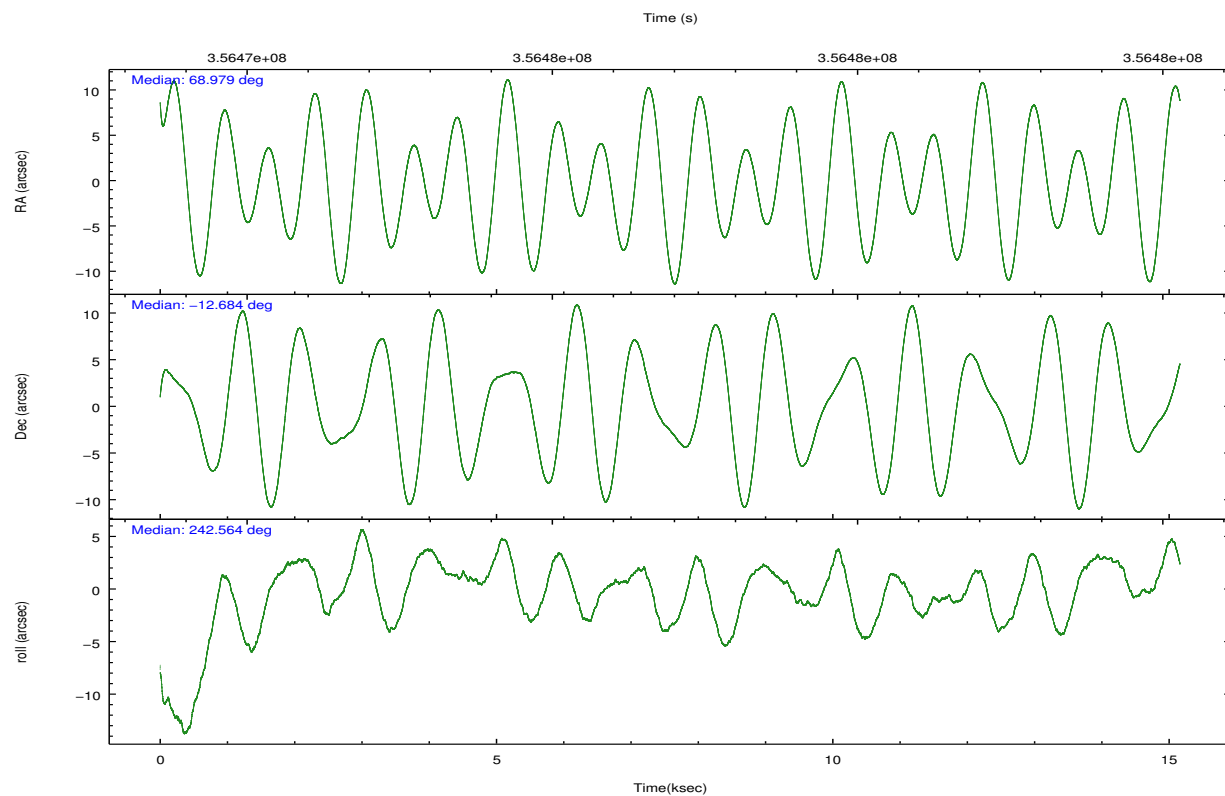
	ccd 2	ccd 3	ccd 6	ccd 7	ccd 8	ccd 9		ccd 2	ccd 3	ccd 6	ccd 7	ccd 8	ccd 9
level 1 events	130517	126410	136454	148734	170156	133226	grade 0 events	4760	4384	5364	6272	12863	5576
rejected events	117563	114063	122185	81612	127015	118333		3%	3%	3%	4%	7%	4%
rejected %	90%	90%	89%	54%	74%	88%	grade 1 events	76	70	71	196	141	85
								0%	0%	0%	0%	0%	0%
							grade 2 events	3136	2760	3110	14035	9872	3267
								2%	2%	2%	9%	5%	2%
							grade 3 events	1371	1445	1433	6092	4682	1622
								1%	1%	1%	4%	2%	1%
							grade 4 events	1439	1347	1521	6011	4366	1485
								1%	1%	1%	4%	2%	1%
							grade 5 events	4341	5291	5361	15534	7783	6038
								3%	4%	3%	10%	4%	4%
							grade 6 events	2369	2514	2951	35259	11649	3100
								1%	1%	2%	23%	6%	2%
							grade 7 events	113025	108599	116643	65335	118800	112053
								86%	85%	85%	43%	69%	84%

2.2 Compared Parameters

Parameter	Planned	Actual	Parameter	Planned	Actual
Instrument	ACIS	ACIS	Obspar format version number	7	7
Detector	ACIS-236789	ACIS-236789	Obspar file type	PREDICTED	ACTUAL
Grating	NONE	NONE	Obspar update status	NONE	UPDATED
Data mode	VFAINT	VFAINT	CCD I0 on	N	N
Observation mode	POINTING	POINTING	CCD I1 on	N	N
[deg] Pointing RA	68.977813	68.97949015687686	CCD I2 on	O3	Y
[deg] Pointing Dec	-12.656839	-12.68413846258072	CCD I3 on	O2	Y
[deg] Pointing Roll	242.412532	242.5695272887905	CCD S0 on	N	N
[mm] SIM focus pos	-0.684267	-0.6828225247311905	CCD S1 on	N	N
[mm] SIM defocus	0	0.001444936568705701	CCD S2 on	Y	Y
[mm] SIM translation stage pos	-190.132523	-190.1400660498719	CCD S3 on	Y	Y
[mm] SIM translation stage offset	0	0.00754346686406393	CCD S4 on	Y	Y
[s] Observation start time (MET)	356469505.184000	356468379.10978	CCD S5 on	O1	Y
Observation start date	2009-04-18T19:17:19	2009-04-18T18:59:39	Number of optional ACIS chips dropped	0	0
[s] Observation end time (MET)	356484505.184000	356485727.74814	On-chip summing requested	N	N
Observation end date	2009-04-18T23:27:19	2009-04-18T23:48:47	Subarray requested	NONE	NONE
Read mode	TIMED	TIMED	Alternating exposures requested	N	N
			[s] Primary exposure time	0.000000	3.2

2.3 Aspect



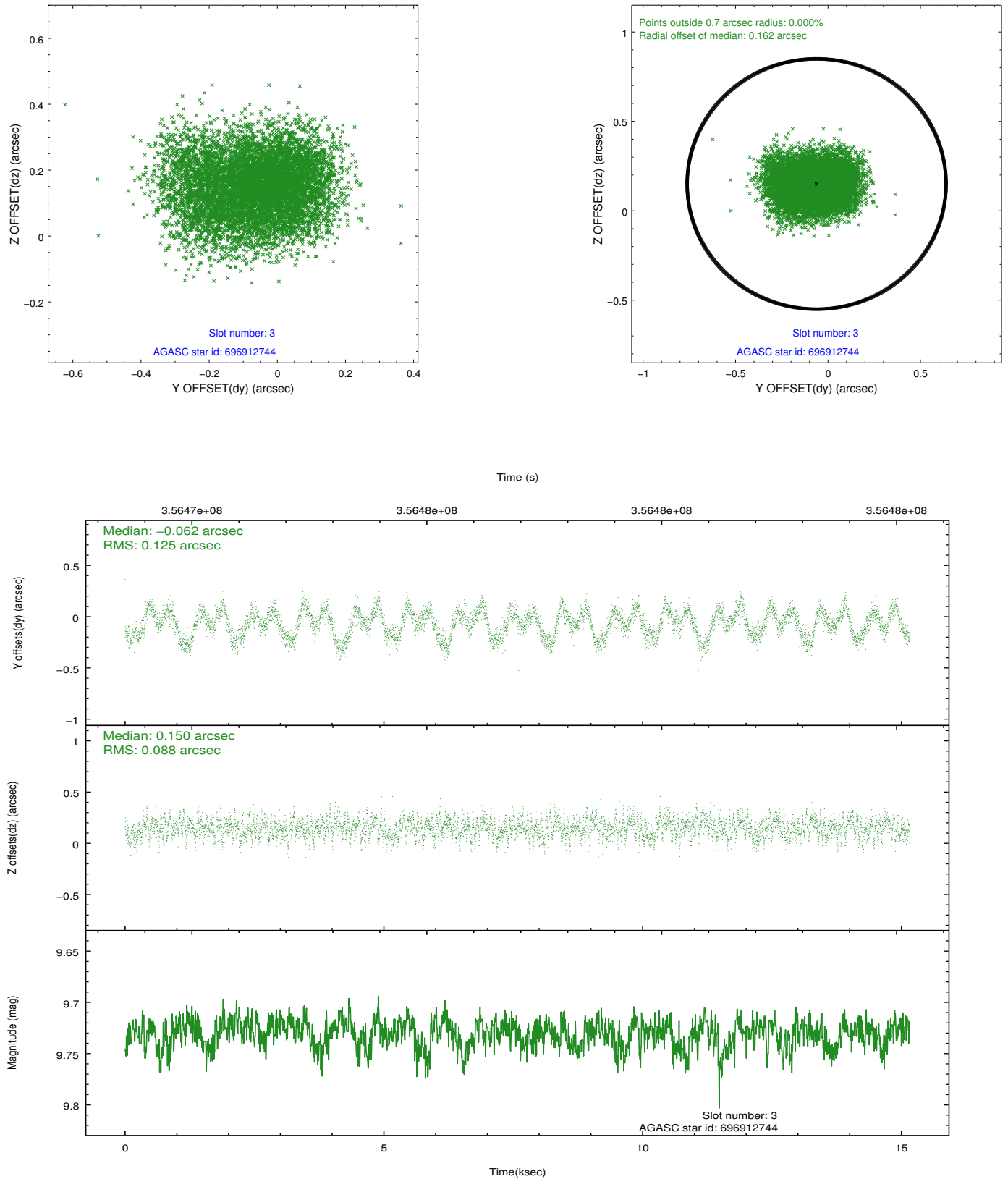


Slot Statistics

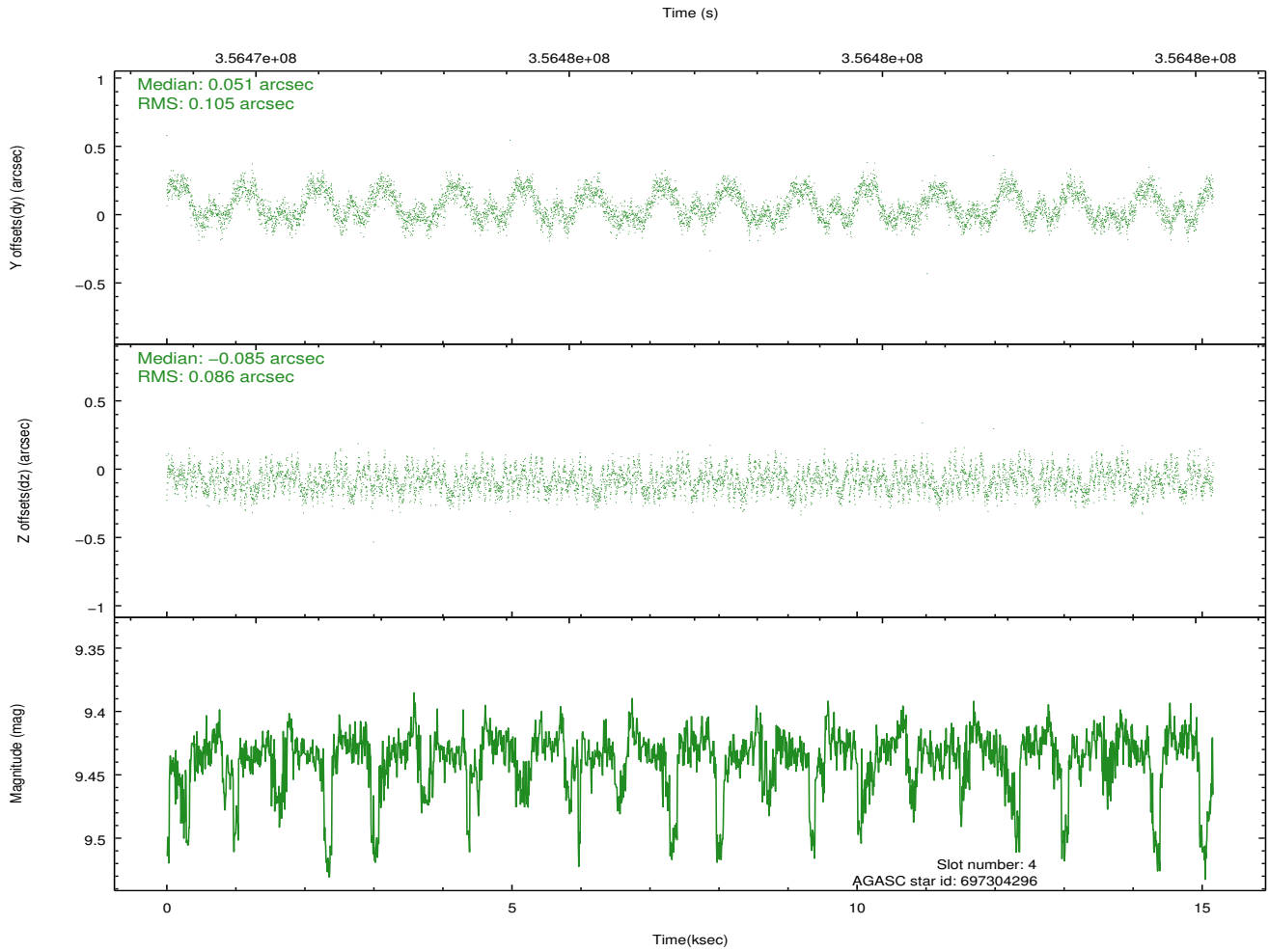
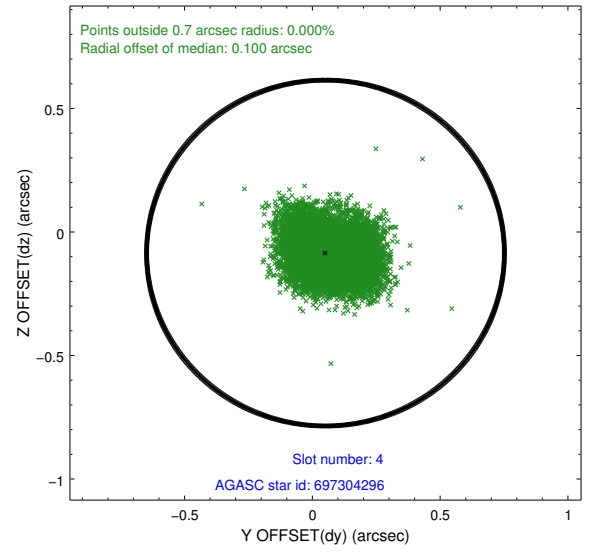
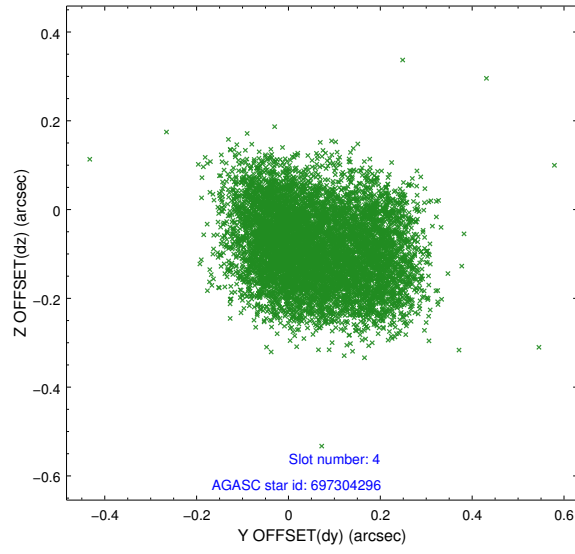
slot	status	id	mag	n_pts	med_dy	med_dz	dr1	dr2	ra	dec	mean_y	mean_z
0	FID	ACIS-S-2	6.90	3698	-0.048	-0.008	0.011	0.017	0.000000	0.000000	-766.24	-1736.75
1	FID	ACIS-S-4	6.99	3698	0.162	0.026	0.009	0.015	0.000000	0.000000	2147.08	171.50
2	FID	ACIS-S-5	7.02	3698	-0.145	-0.009	0.008	0.014	0.000000	0.000000	-1818.83	165.42
3	GUIDE	696912744	9.73	7386	-0.062	0.150	0.166	0.258	68.684610	-11.929023	-1843.05	-2128.43
4	GUIDE	697304296	9.43	7361	0.051	-0.085	0.148	0.220	68.446705	-12.512422	406.06	-1894.41
5	GUIDE	697835752	7.82	7396	-0.046	-0.108	0.061	0.101	69.312835	-12.164170	-2117.27	223.86
6	GUIDE	698220616	7.51	7392	0.016	-0.072	0.060	0.094	69.313891	-12.560296	-854.31	886.08
7	GUIDE	698227032	9.56	7382	0.037	0.115	0.100	0.163	69.294041	-13.120494	966.61	1756.47

2.4 Star Slots

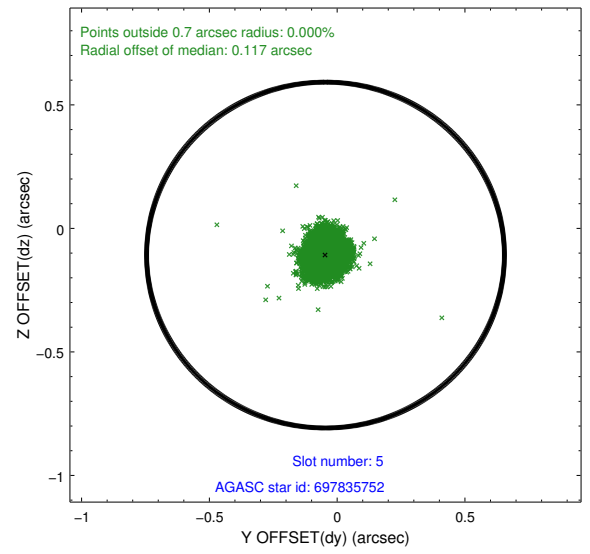
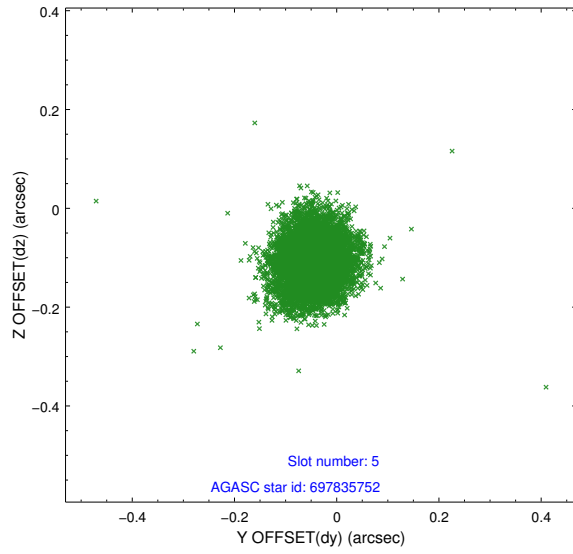
2.4.1 Slot 3



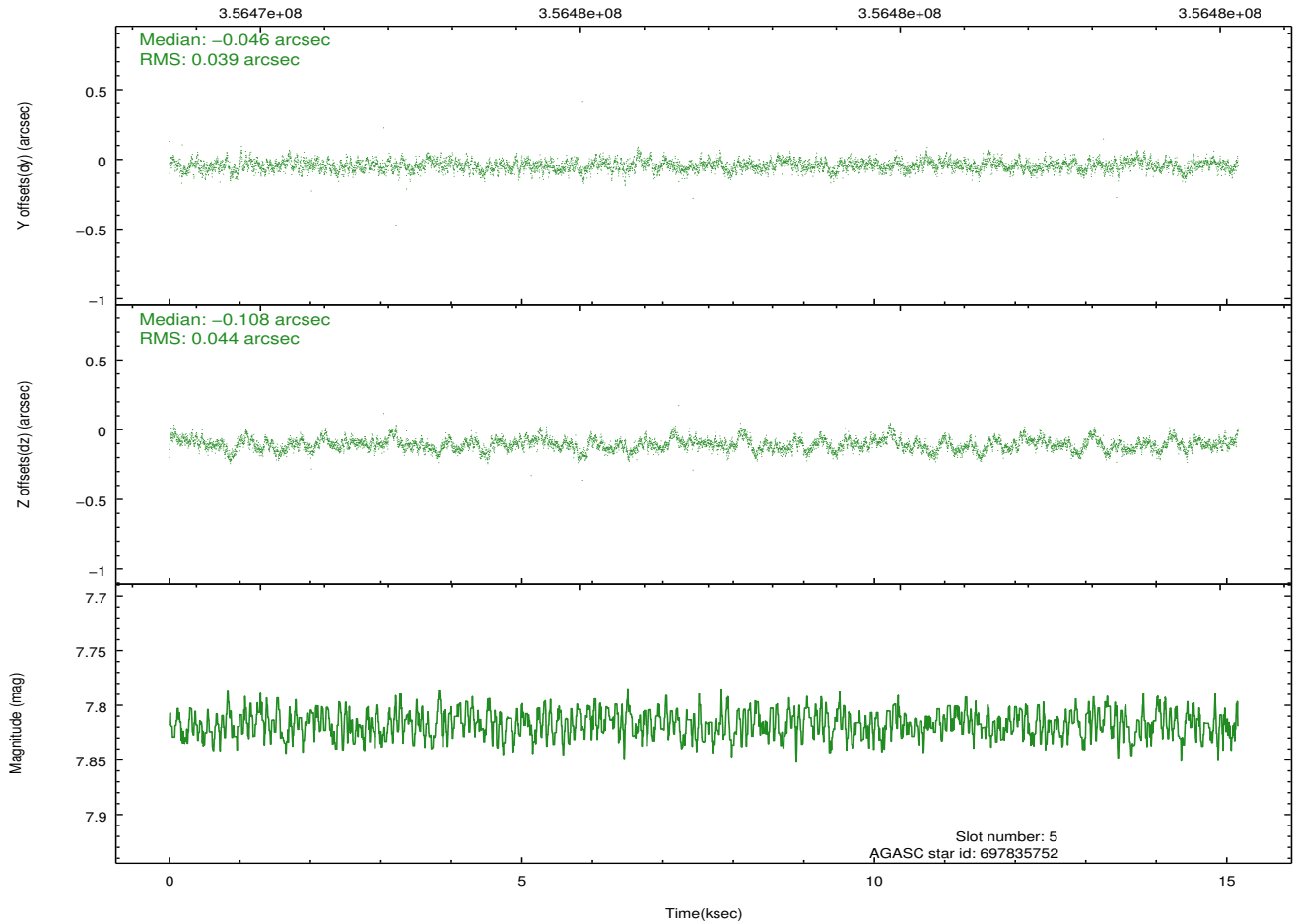
2.4.2 Slot 4



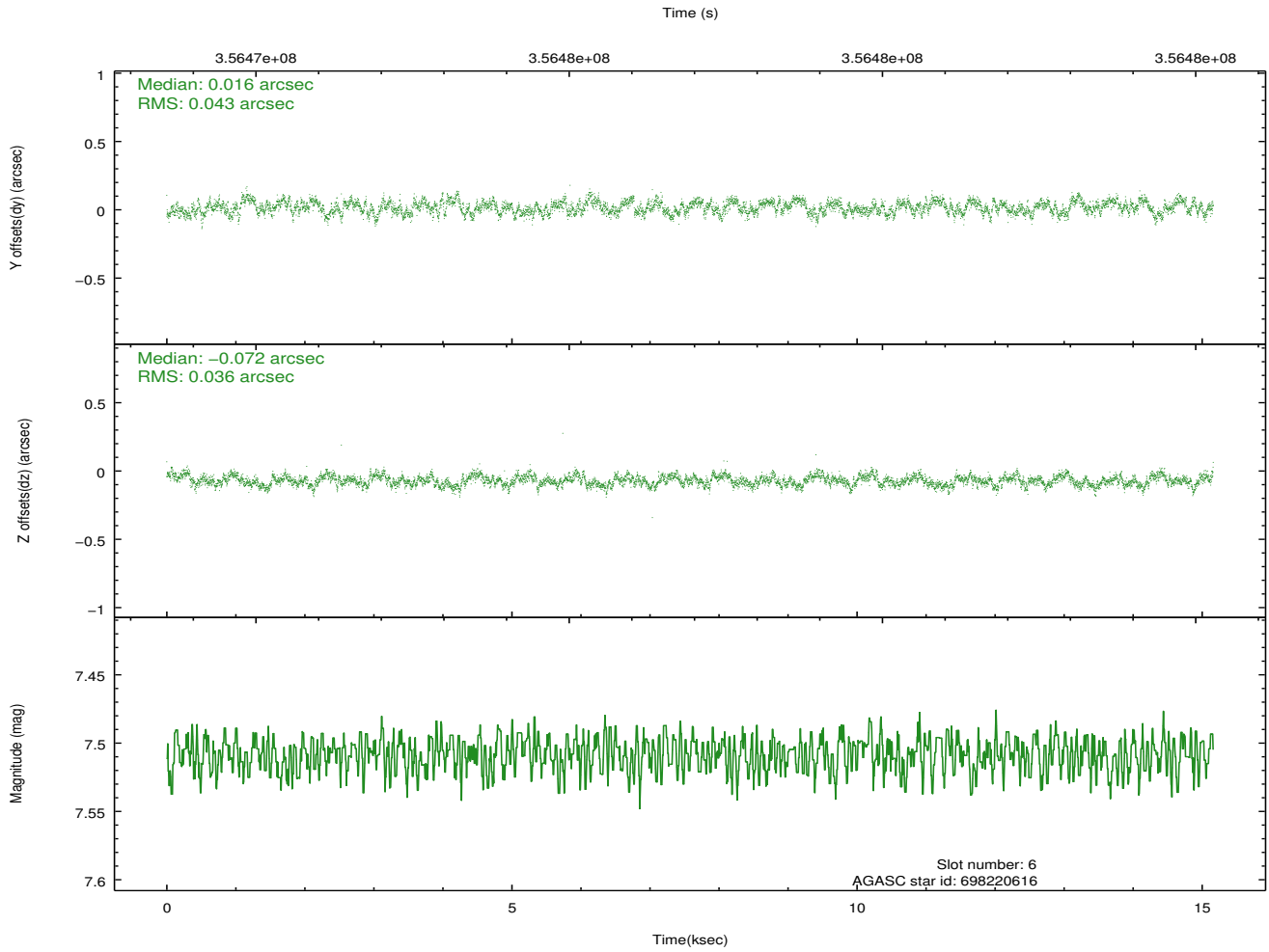
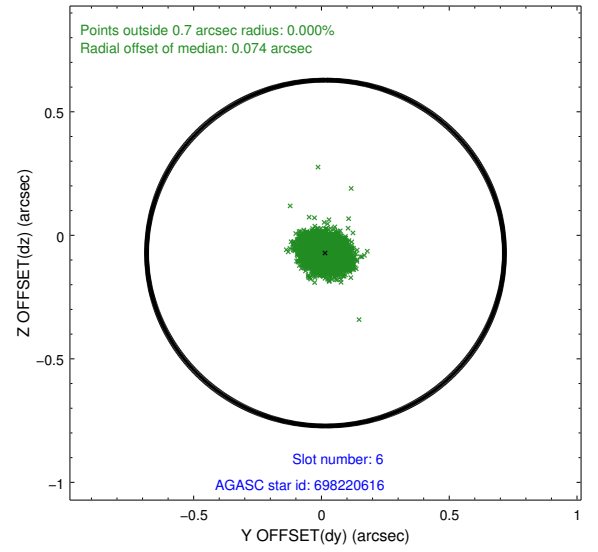
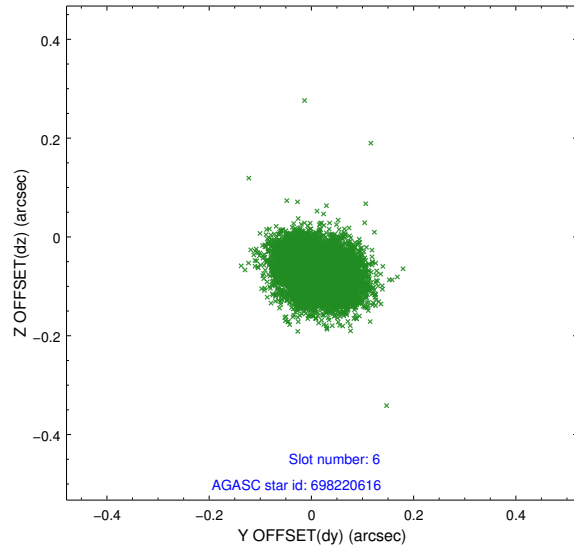
2.4.3 Slot 5



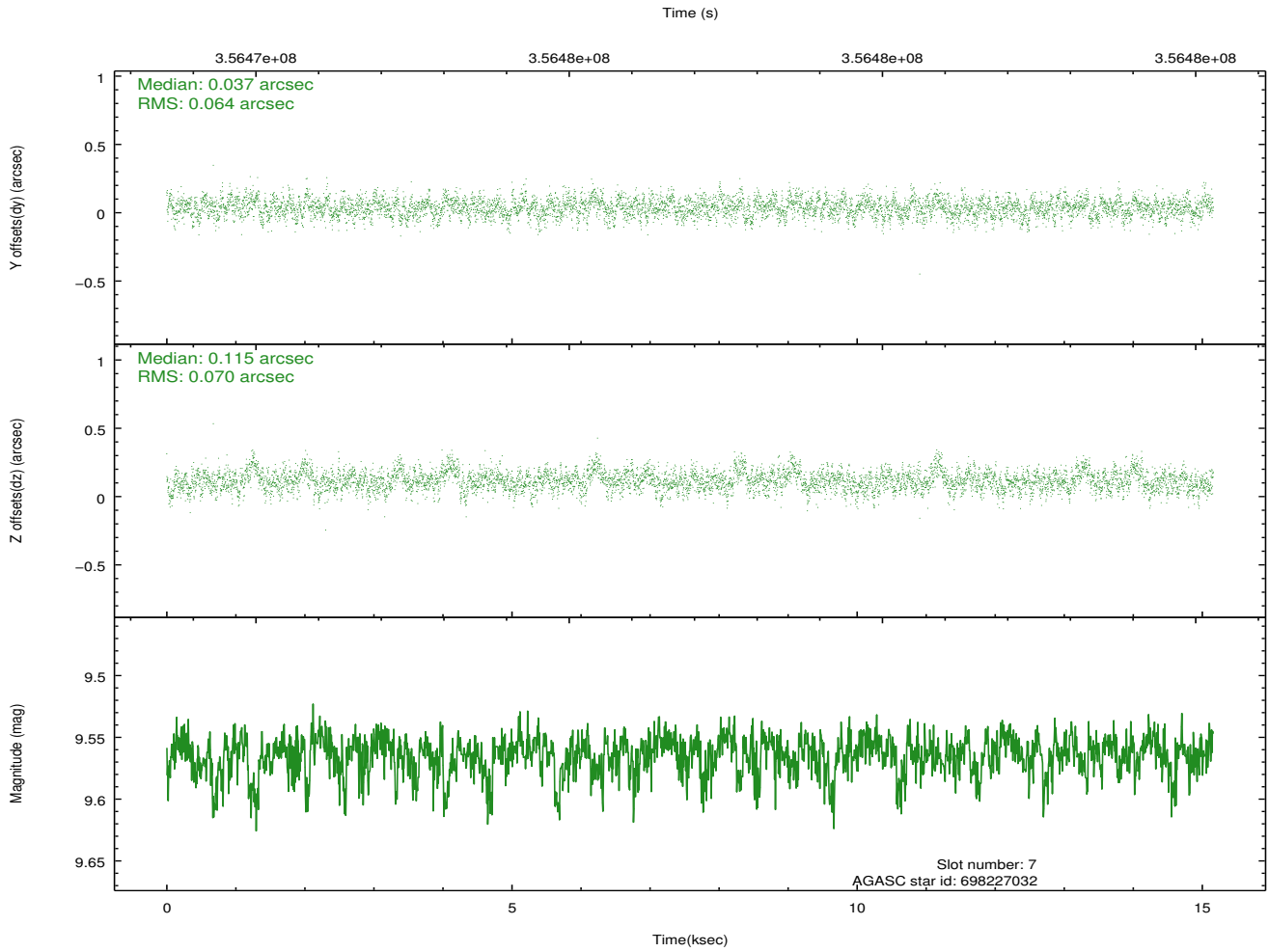
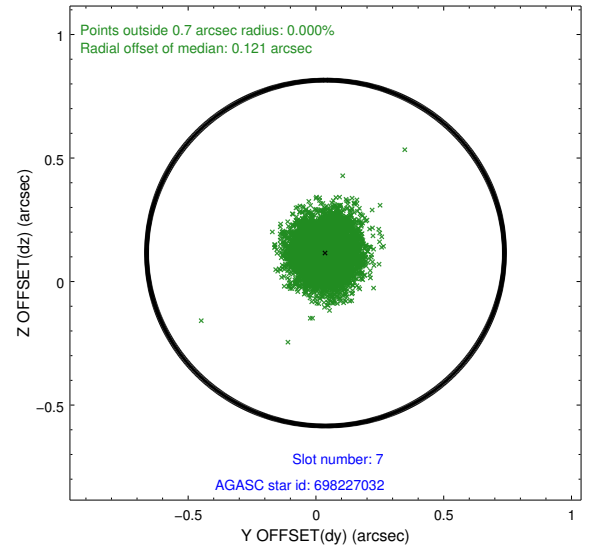
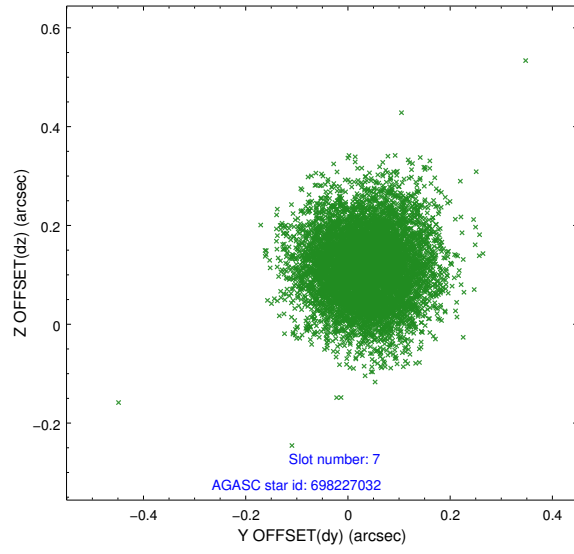
Time (s)



2.4.4 Slot 6

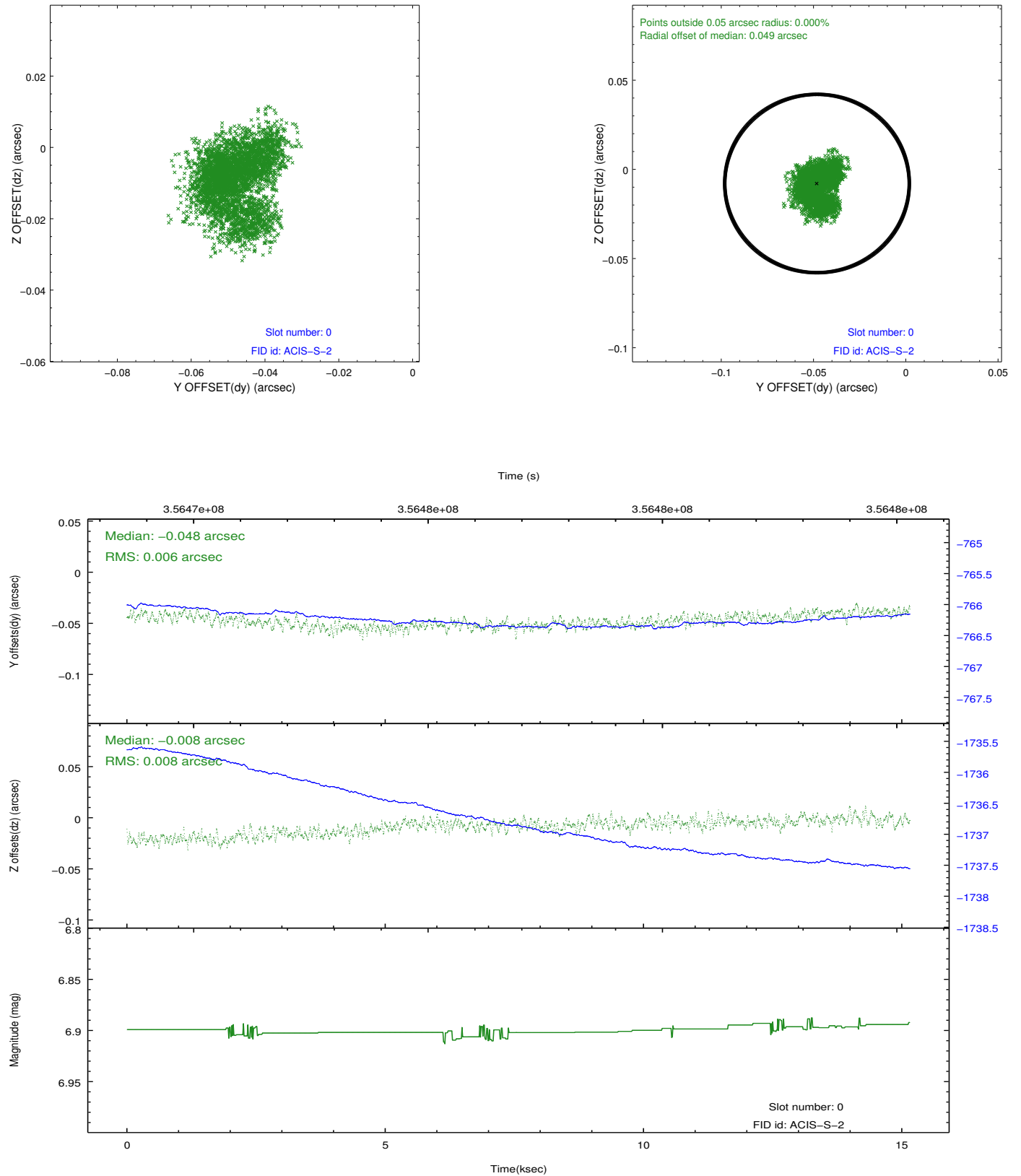


2.4.5 Slot 7

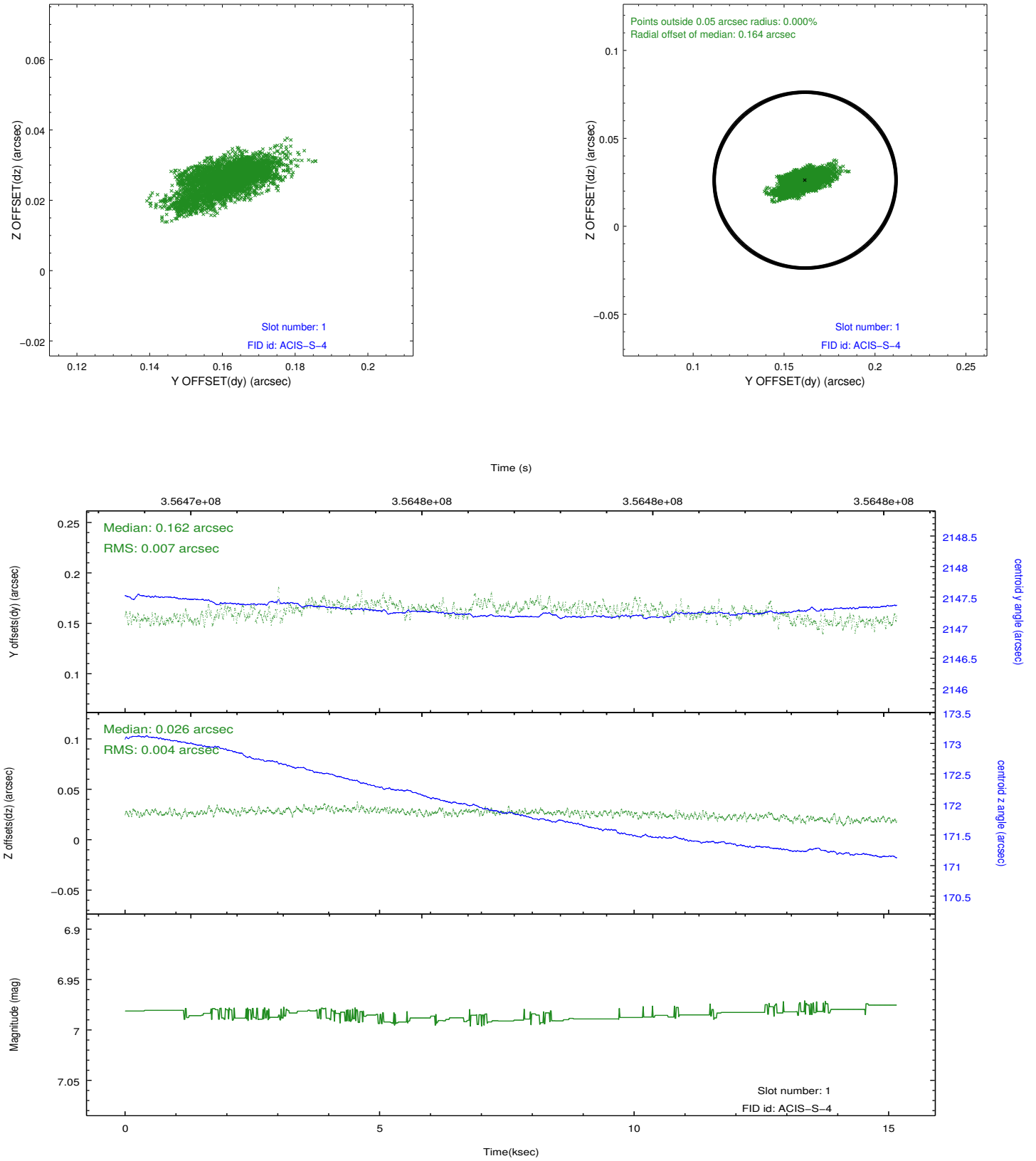


2.5 FID Slots

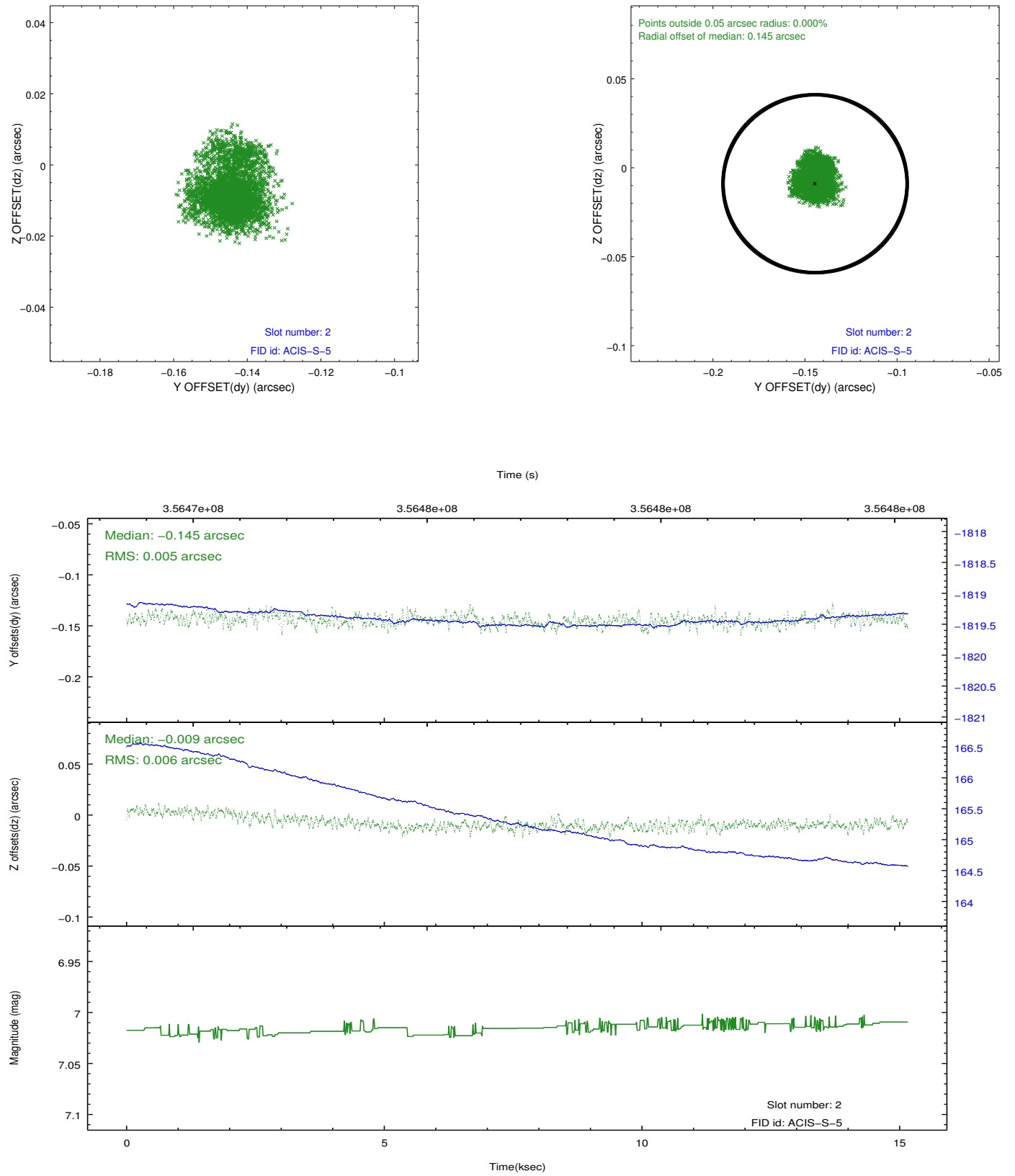
2.5.1 Slot 0



2.5.2 Slot 1



2.5.3 Slot 2



A Summary

A.1 Status

V&V Scientist	Beth Sundheim
V&V Date (YYYY-MM-DD)	2012.06.08
V&V Edition	1
V&V Disposition and Status	OK
V&V Charge Time	15.1551999

A.2 Comments

Joint proposal with HST.