

V&V Reference Report

L2 ASCDS Version : 8.4.4

Observation 10352 - L2 Version 2
Chandra X-Ray Center

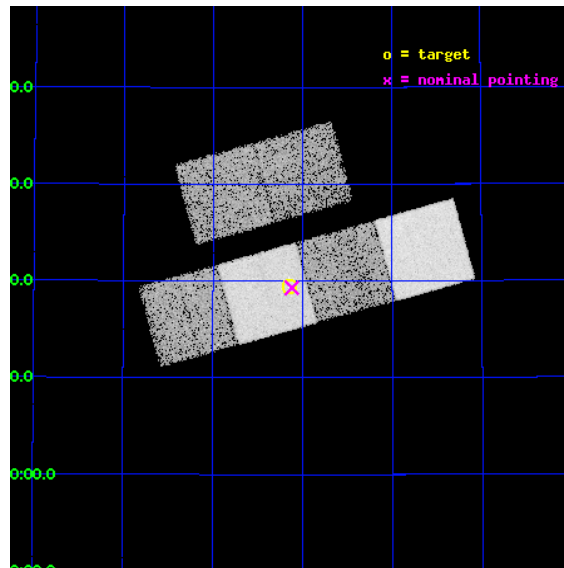
L2 Processing Date : Jun 1 2012

Contents

1	Front	2
2	OBI	3
2.1	OBI	3
2.1.1	Images	3
2.1.2	Bias	3
2.1.3	Parameters	4
2.1.4	Events	4
2.2	Compared Parameters	5
2.3	Aspect	6
2.4	Star Slots	9
2.4.1	Slot 3	9
2.4.2	Slot 4	10
2.4.3	Slot 5	11
2.4.4	Slot 6	12
2.4.5	Slot 7	13
2.5	FID Slots	14
2.5.1	Slot 0	14
2.5.2	Slot 1	15
2.5.3	Slot 2	16
A	Summary	17
A.1	Status	17
A.2	Comments	17

1 Front

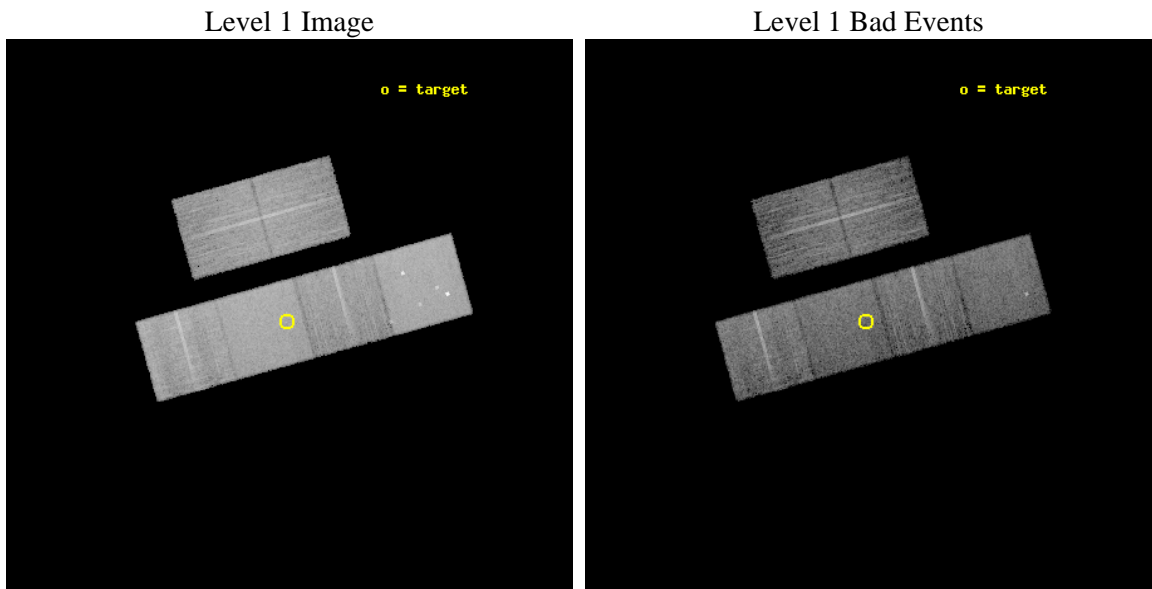
seq_num	701895	Sequence number
obs_id	10352	Observation id
title	Testing the Radiative-Driving Hypothesis of Quasar Outflows	Propos
observer	Dr. Rajib Ganguly	Principal investigator
object	SDSS J1202+5119	Source name
dtcycle	0	
cycle	P	events from which exps? Prim/Second/Both
ra_targ	180.537083	Observer's specified target RA [deg]
dec_targ	51.323056	Observer's specified target Dec [deg]
ra_nom	180.52973854353	Nominal RA [deg]
dec_nom	51.321676026381	Nominal Dec [deg]
roll_nom	164.47640317213	Nominal Roll [deg]
revision	2	Processing version of data
ontime	7951.9999704361	Sum of GTIs [s]
livetime	7851.3069586909	Livetime [s]
ontime2	7951.9999704361	Sum of GTIs [s]
ontime3	7951.9999704361	Sum of GTIs [s]
ontime5	7951.9999704361	Sum of GTIs [s]
ontime6	7951.9999704361	Sum of GTIs [s]
ontime7	7951.9999704361	Sum of GTIs [s]
ontime8	7951.9999704361	Sum of GTIs [s]
l2events	136998	Number of level 2 events



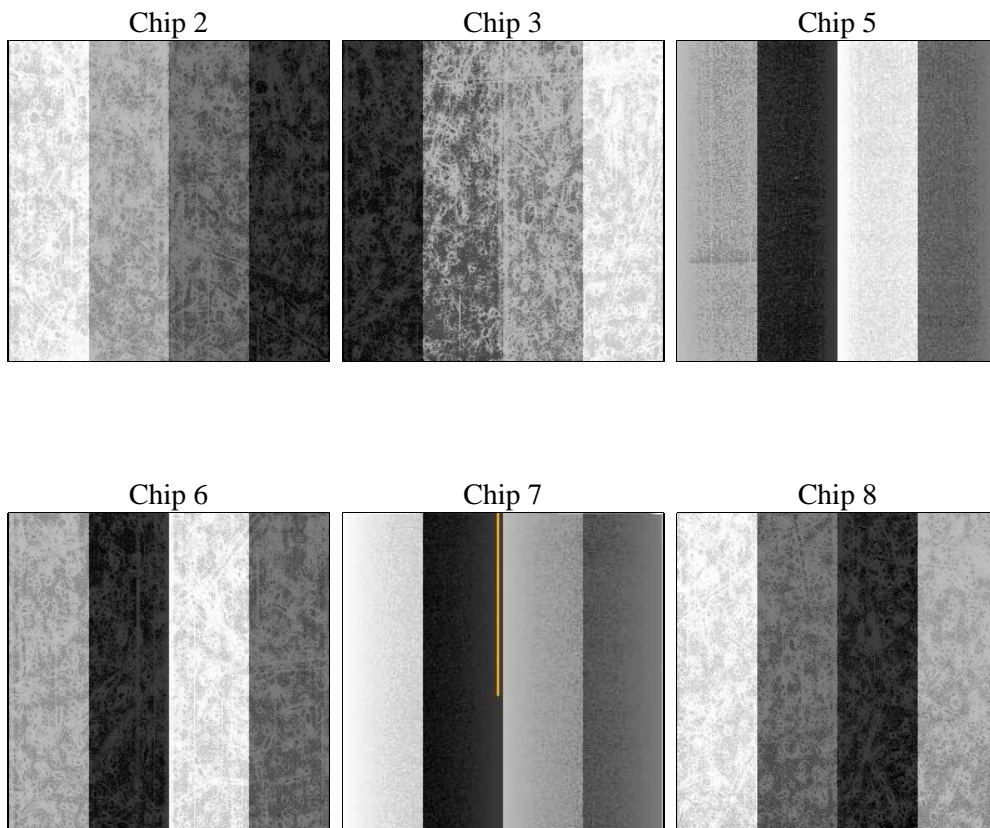
2 OBI

2.1 OBI

2.1.1 Images



2.1.2 Bias



2.1.3 Parameters

obi_num	0	Obi number	sched_exp_time	8000.000000	[s] Scheduled observation exposure time
ascdsver	8.4.4	Processing system revision	ontime	7951.9999704361	Sum of GTIs [s]
caldsver	4.4.9	 	ontime2	7951.9999704361	Sum of GTIs [s]
date	2012-06-02T00:13:42	Date and time of file creation	ontime3	7951.9999704361	Sum of GTIs [s]
revision	2	Processing version of data	ontime5	7951.9999704361	Sum of GTIs [s]
			ontime6	7951.9999704361	Sum of GTIs [s]
			ontime7	7951.9999704361	Sum of GTIs [s]
			ontime8	7951.9999704361	Sum of GTIs [s]
			l1events	596724	Number of level 1 events

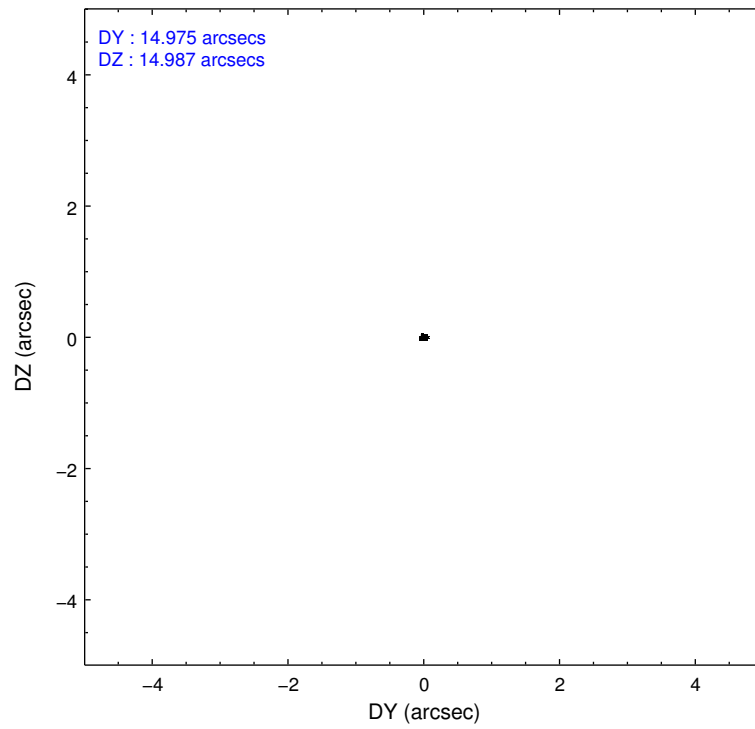
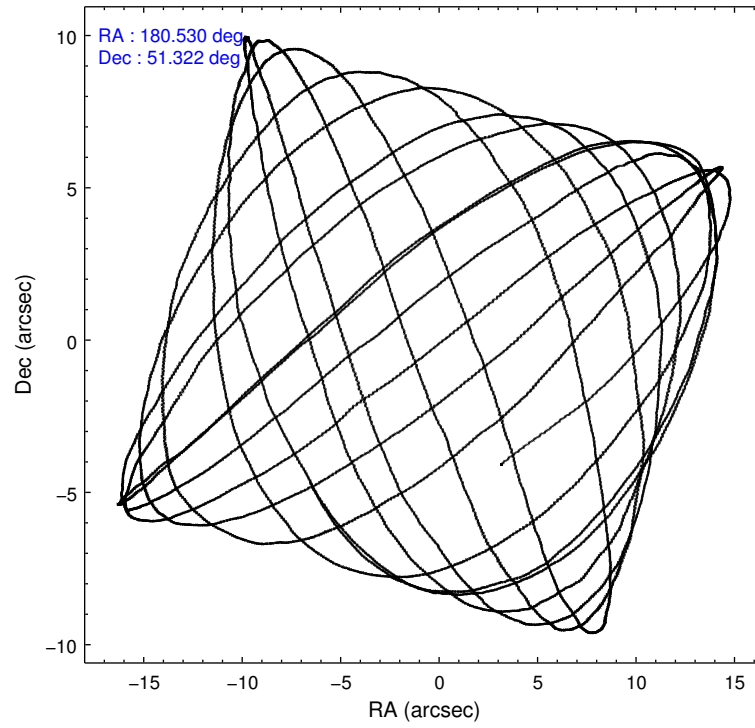
2.1.4 Events

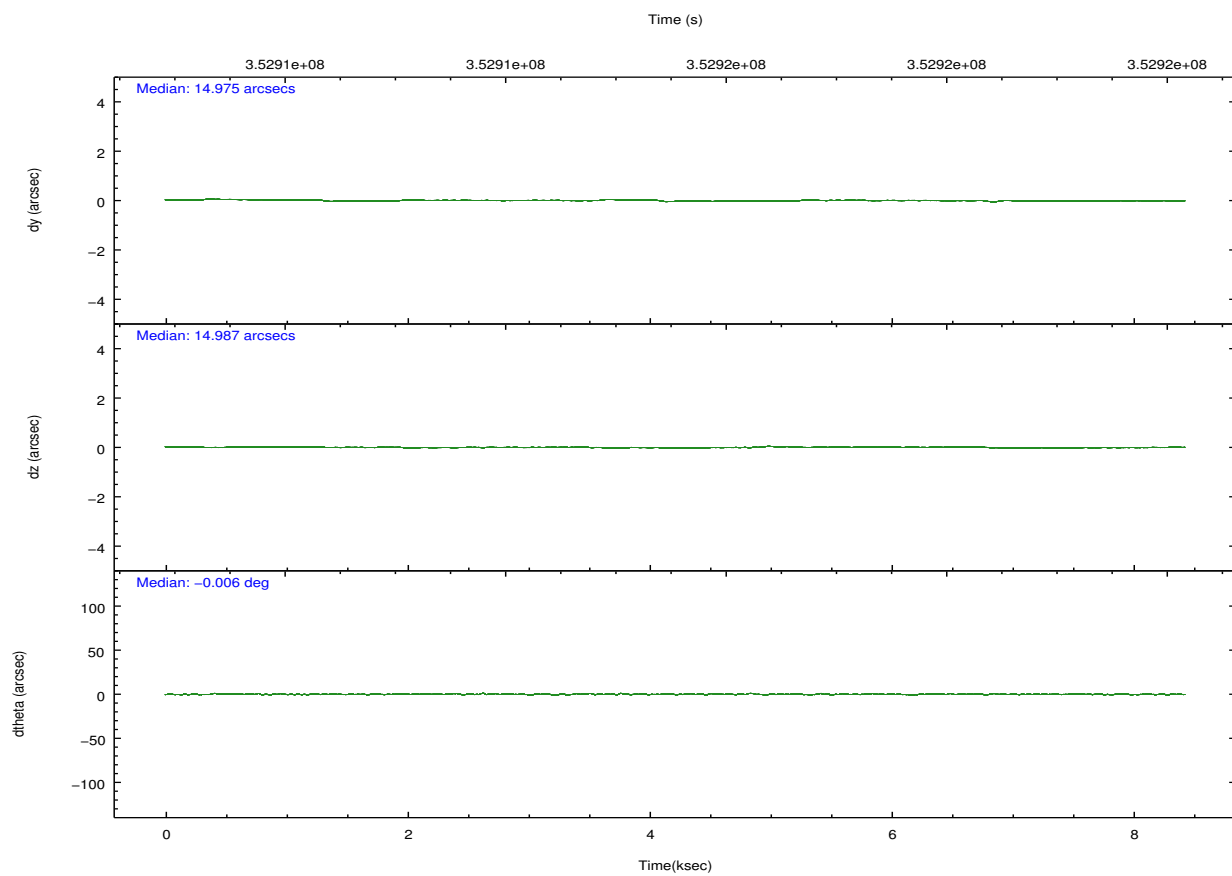
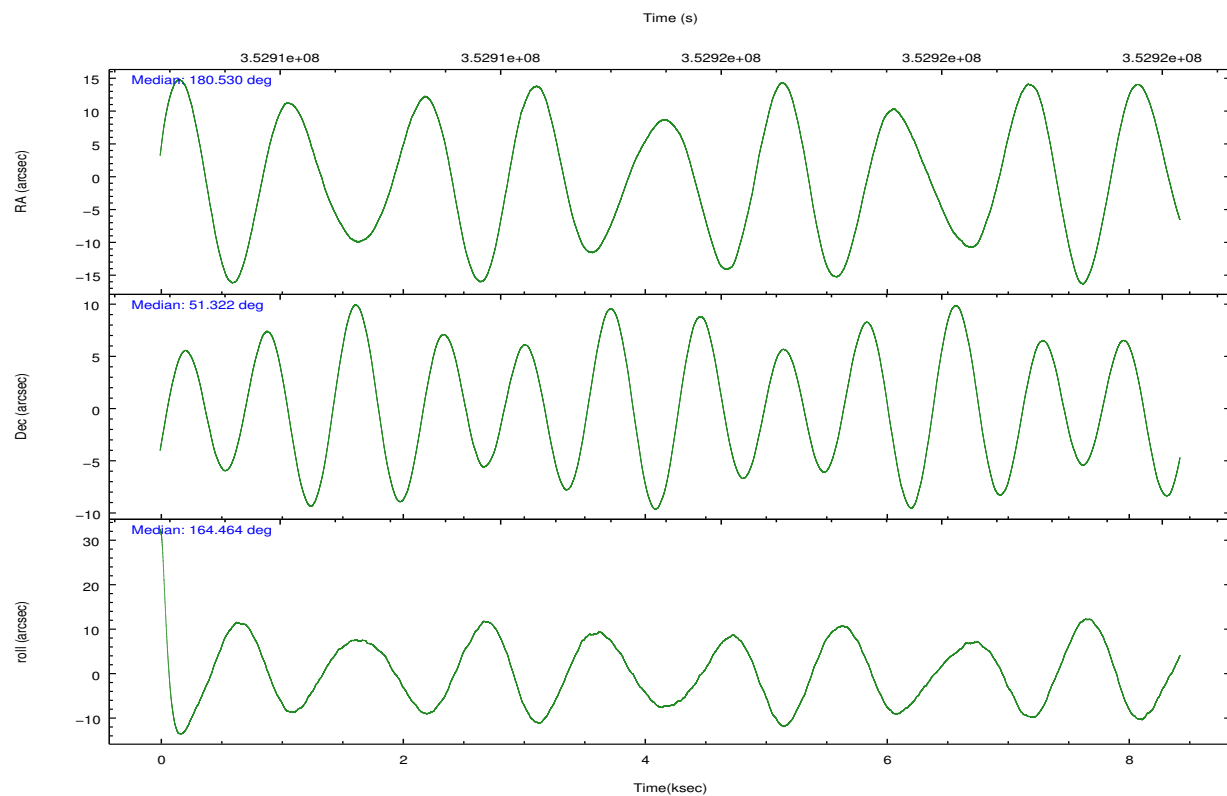
	ccd 2	ccd 3	ccd 5	ccd 6	ccd 7	ccd 8		ccd 2	ccd 3	ccd 5	ccd 6	ccd 7	ccd 8
level 1 events	83241	80807	132219	81677	114193	104587	grade 0 events	3989	4165	7551	3883	3972	7666
rejected events	73722	70972	69815	71905	66914	80214		4%	5%	5%	4%	3%	7%
rejected %	88%	87%	52%	88%	58%	76%	grade 1 events	55	54	334	57	118	66
								0%	0%	0%	0%	0%	0%
							grade 2 events	2120	2042	18896	2190	9835	5524
								2%	2%	14%	2%	8%	5%
							grade 3 events	844	946	2492	904	3947	2416
								1%	1%	1%	1%	3%	2%
							grade 4 events	915	835	2045	816	4012	2274
								1%	1%	1%	0%	3%	2%
							grade 5 events	3555	3936	9160	3920	10634	5169
								4%	4%	6%	4%	9%	4%
							grade 6 events	1658	1851	31439	1988	25534	6501
								1%	2%	23%	2%	22%	6%
							grade 7 events	70105	66978	60302	67919	56141	74971
								84%	82%	45%	83%	49%	71%

2.2 Compared Parameters

Parameter	Planned	Actual	Parameter	Planned	Actual
Instrument	ACIS	ACIS	Obspar format version number	7	7
Detector	ACIS-235678	ACIS-235678	Obspar file type	PREDICTED	ACTUAL
Grating	NONE	NONE	Obspar update status	NONE	UPDATED
Data mode	FAINT	FAINT	CCD I0 on	N	N
Observation mode	POINTING	POINTING	CCD I1 on	N	N
[deg] Pointing RA	180.571846	180.529738543534	CCD I2 on	O1	Y
[deg] Pointing Dec	51.328890	51.3216760263809	CCD I3 on	O2	Y
[deg] Pointing Roll	164.286844	164.4764031721309	CCD S0 on	N	N
[mm] SIM focus pos	-0.684267	-0.6828225247311905	CCD S1 on	Y	Y
[mm] SIM defocus	0	0.001444936568705701	CCD S2 on	Y	Y
[mm] SIM translation stage pos	-190.132523	-190.1400660498719	CCD S3 on	Y	Y
[mm] SIM translation stage offset	0	0.00754346686406393	CCD S4 on	Y	Y
[s] Observation start time (MET)	352911747.184000	352910660.30788	CCD S5 on	N	N
Observation start date	2009-03-08T15:01:21	2009-03-08T14:44:20	Number of optional ACIS chips dropped	0	0
[s] Observation end time (MET)	352919747.184000	352920612.54587	On-chip summing requested	N	N
Observation end date	2009-03-08T17:14:41	2009-03-08T17:30:12	Subarray requested	NONE	NONE
Read mode	TIMED	TIMED	Alternating exposures requested	N	N
			[s] Primary exposure time	0.000000	3.2

2.3 Aspect



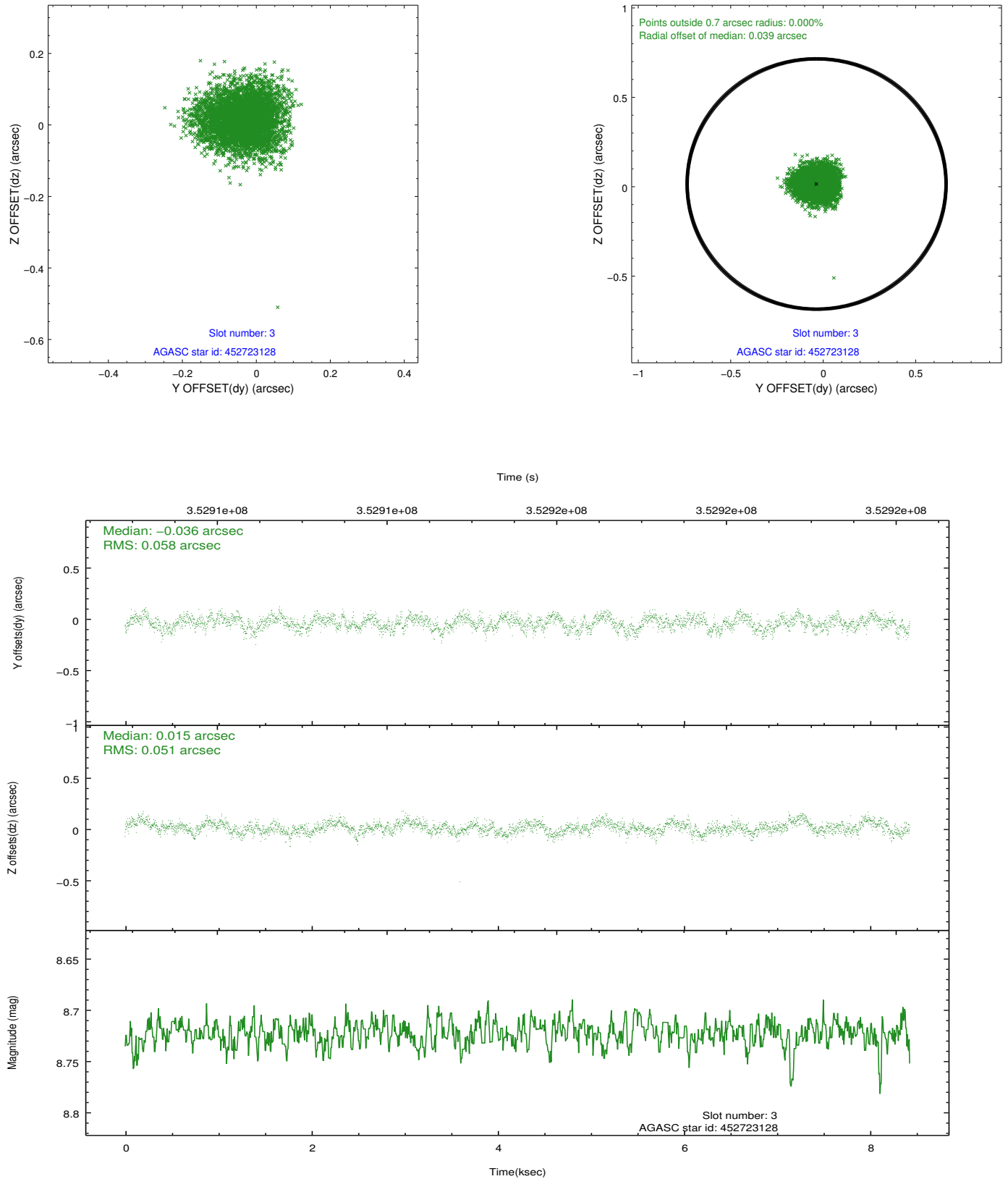


Slot Statistics

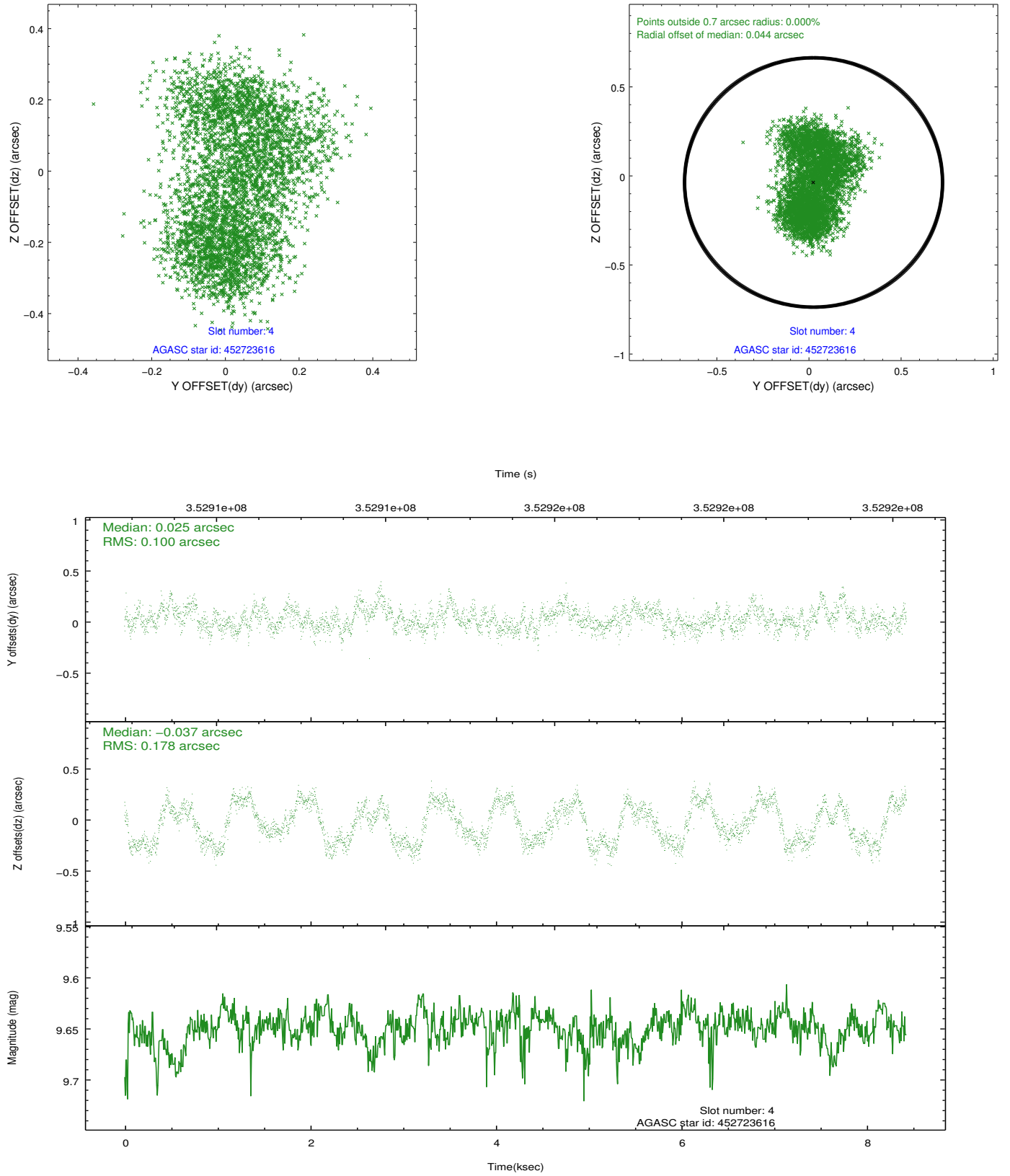
slot	status	id	mag	n_pts	med_dy	med_dz	dr1	dr2	ra	dec	mean_y	mean_z
0	FID	ACIS-S-1	7.04	2056	0.021	-0.043	0.007	0.013	0.000000	0.000000	928.12	-1732.03
1	FID	ACIS-S-4	7.05	2056	0.182	0.024	0.006	0.010	0.000000	0.000000	2146.03	171.52
2	FID	ACIS-S-5	7.08	2056	-0.230	0.031	0.006	0.011	0.000000	0.000000	-1820.18	165.83
3	GUIDE	452723128	8.72	4109	-0.036	0.015	0.082	0.131	179.996077	51.771559	1668.65	-1190.86
4	GUIDE	452723616	9.65	4106	0.025	-0.037	0.229	0.314	179.983510	51.876695	1792.81	-1548.14
5	GUIDE	453118832	9.69	4107	-0.023	-0.151	0.155	0.234	180.938632	50.640725	-1475.80	2155.93
6	GUIDE	453119360	9.25	4110	0.017	0.089	0.113	0.180	181.253878	51.244887	-1559.19	-131.08
7	GUIDE	453124848	8.60	4109	0.024	0.077	0.091	0.145	181.720212	51.735279	-2062.27	-2121.07

2.4 Star Slots

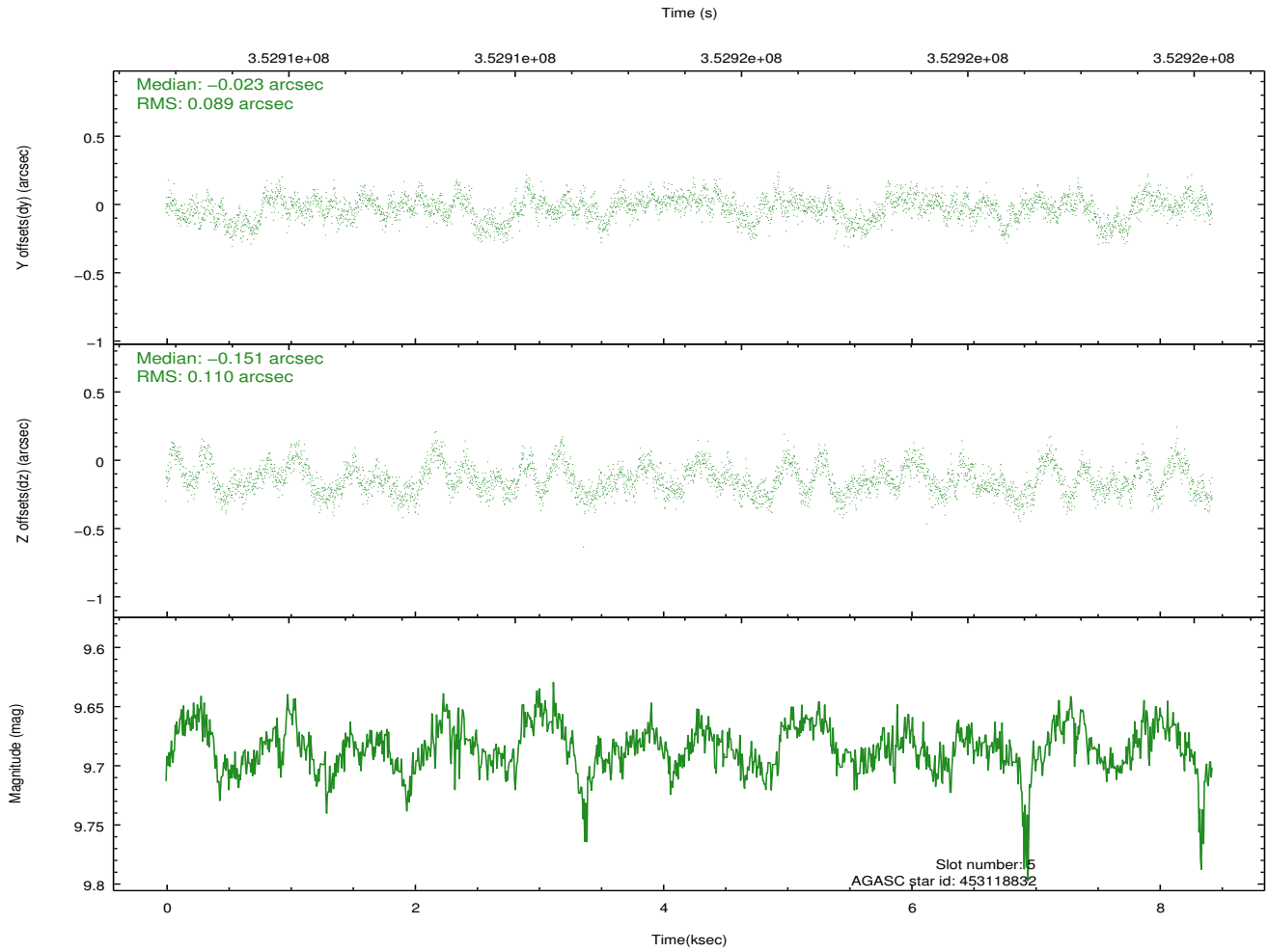
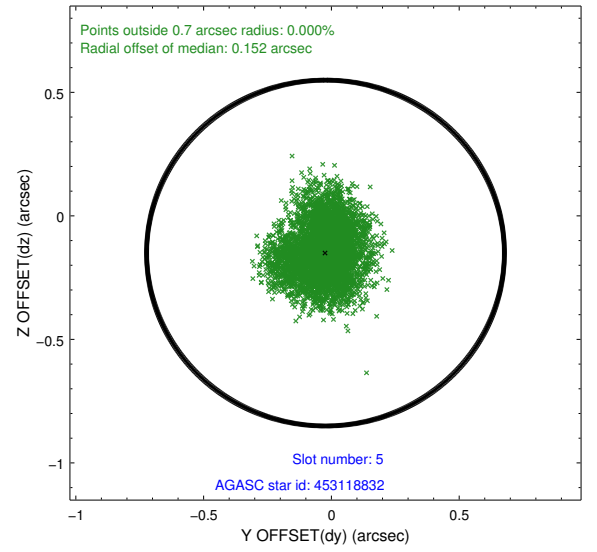
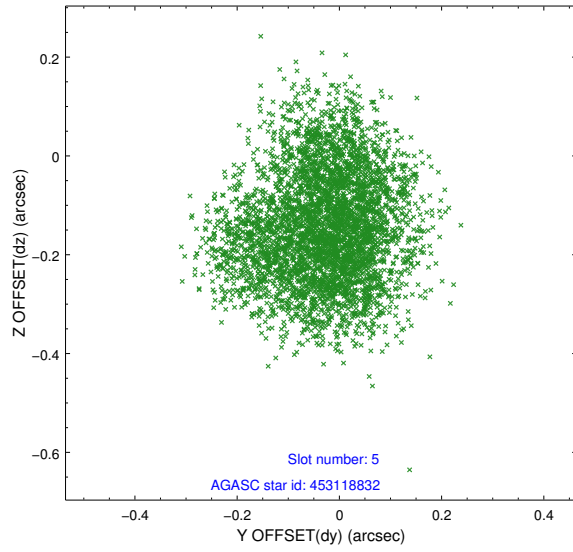
2.4.1 Slot 3



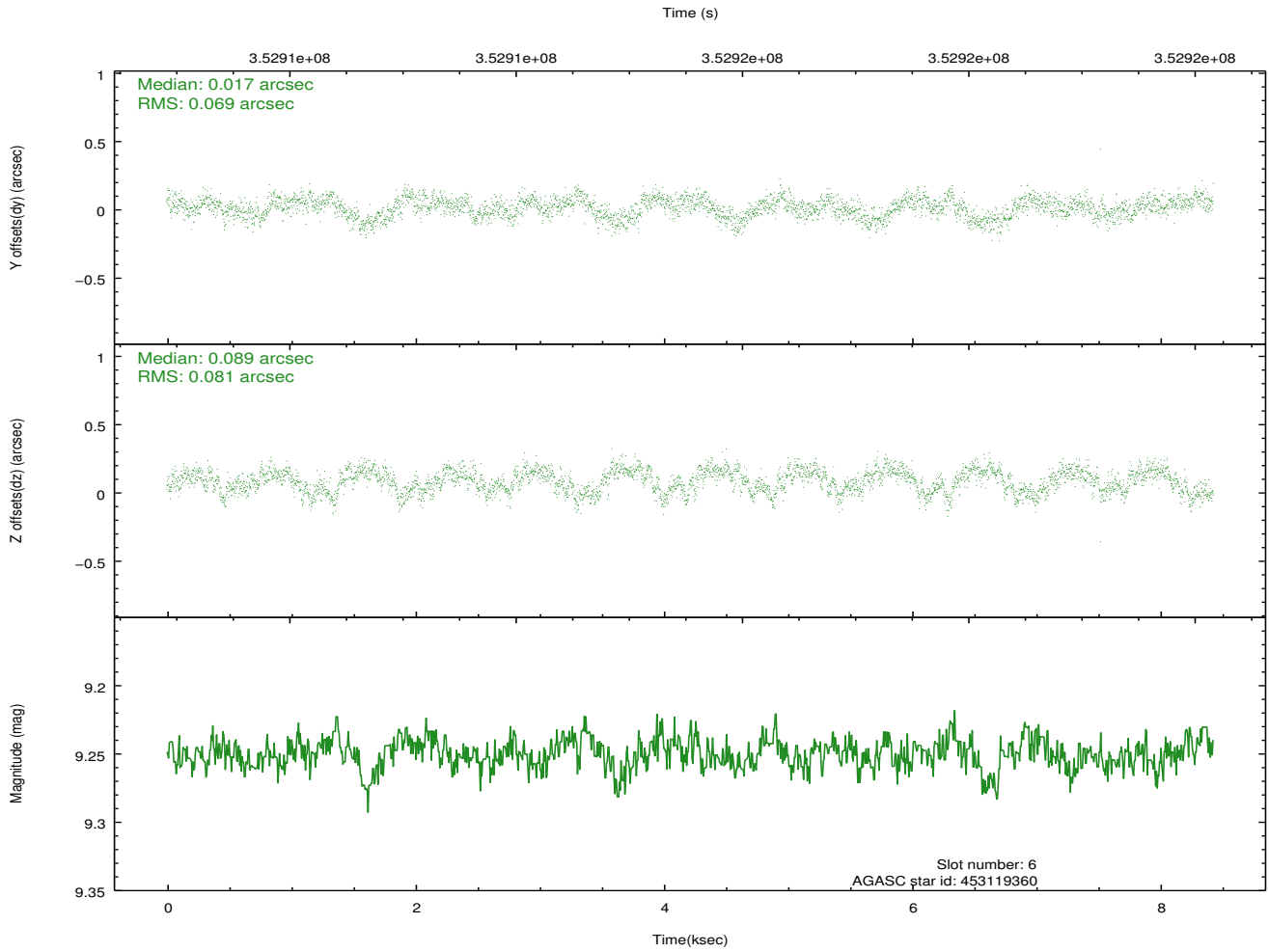
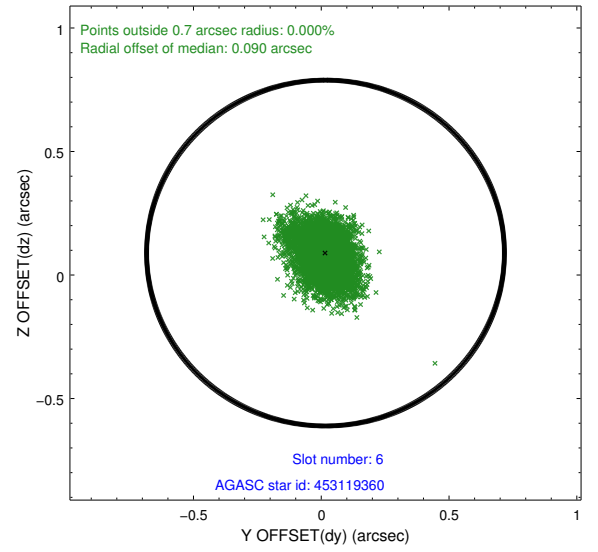
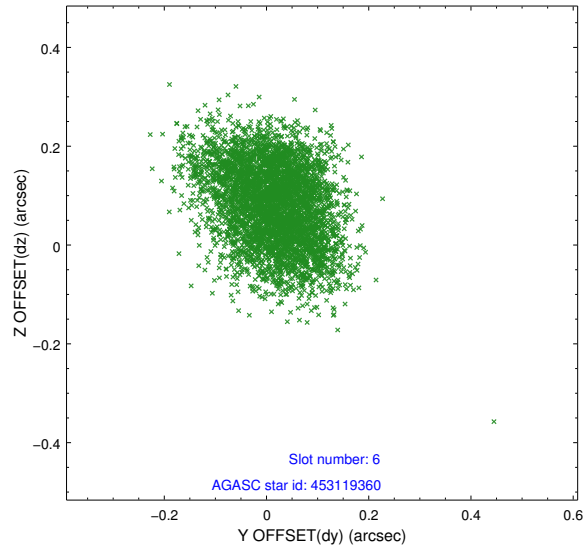
2.4.2 Slot 4



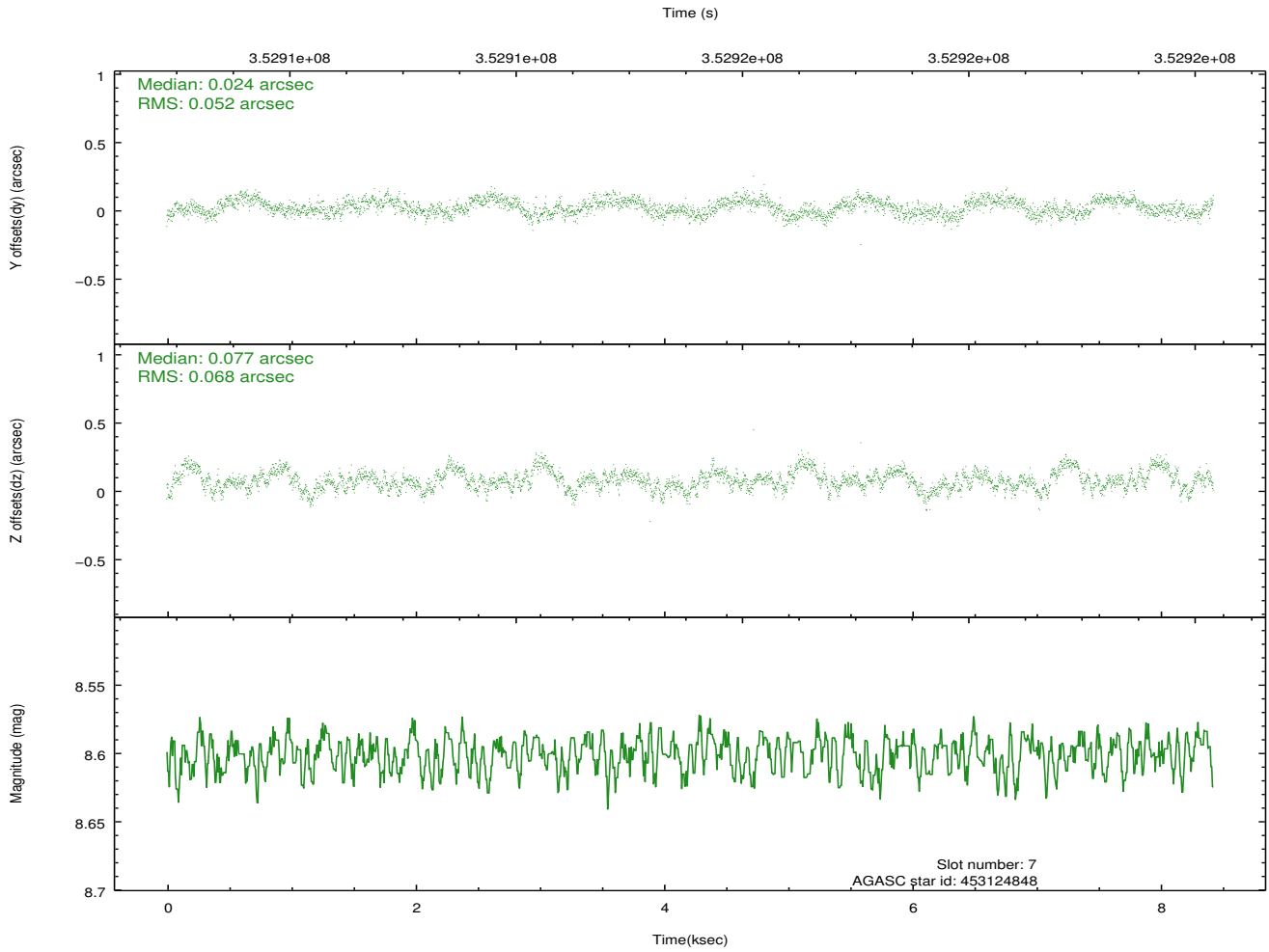
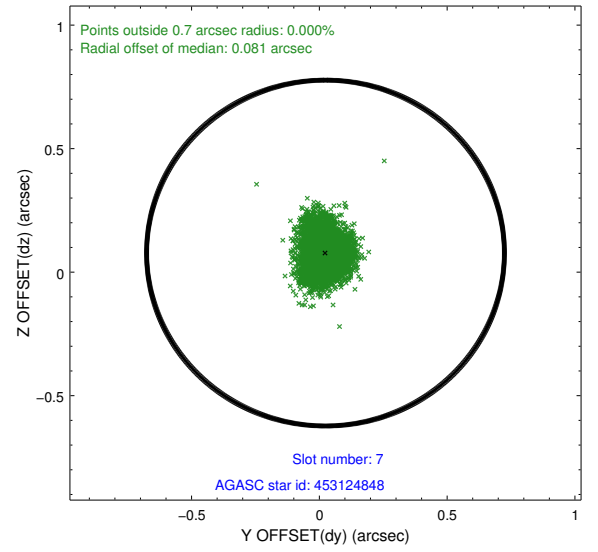
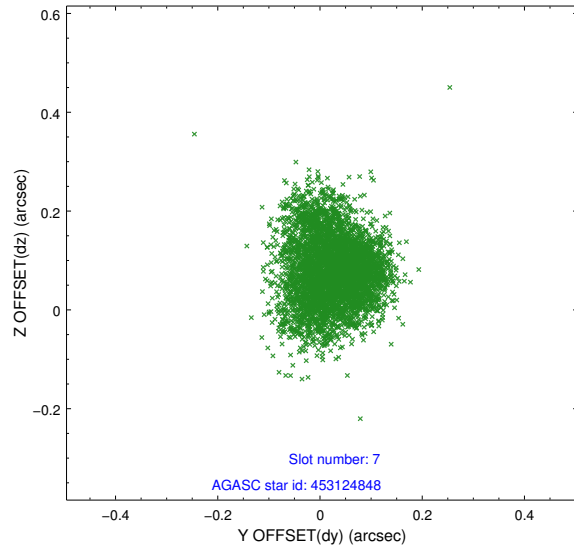
2.4.3 Slot 5



2.4.4 Slot 6

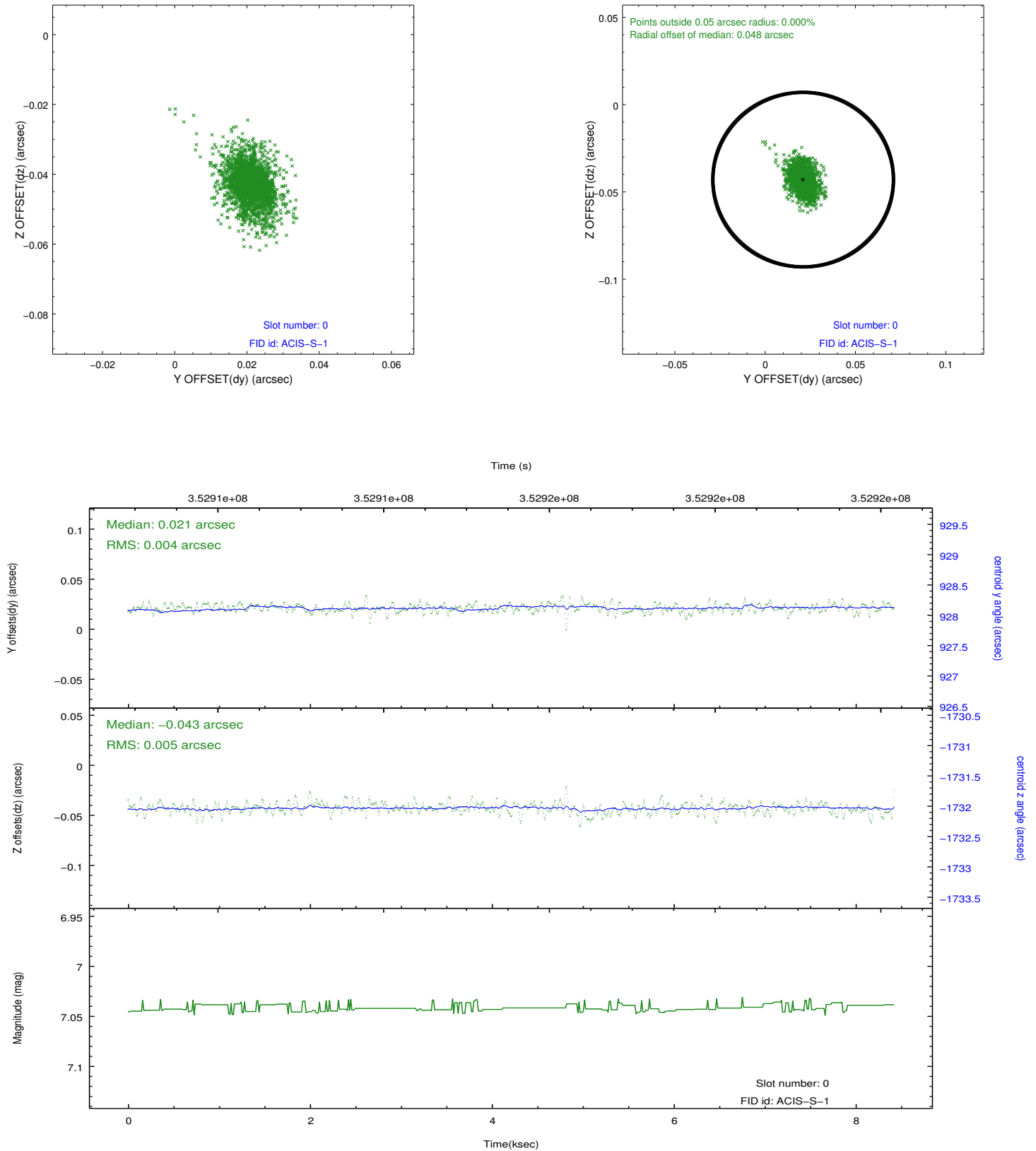


2.4.5 Slot 7

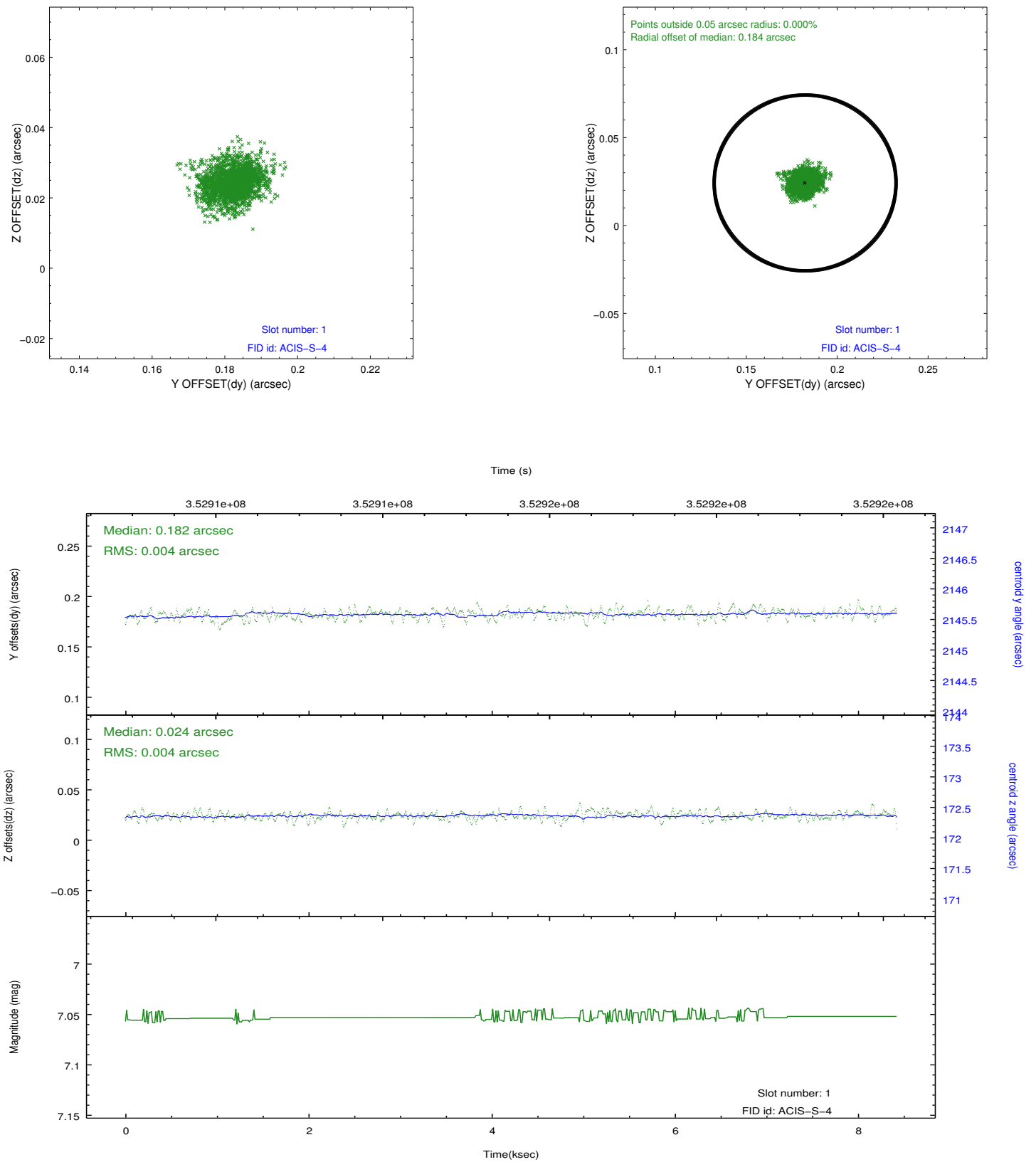


2.5 FID Slots

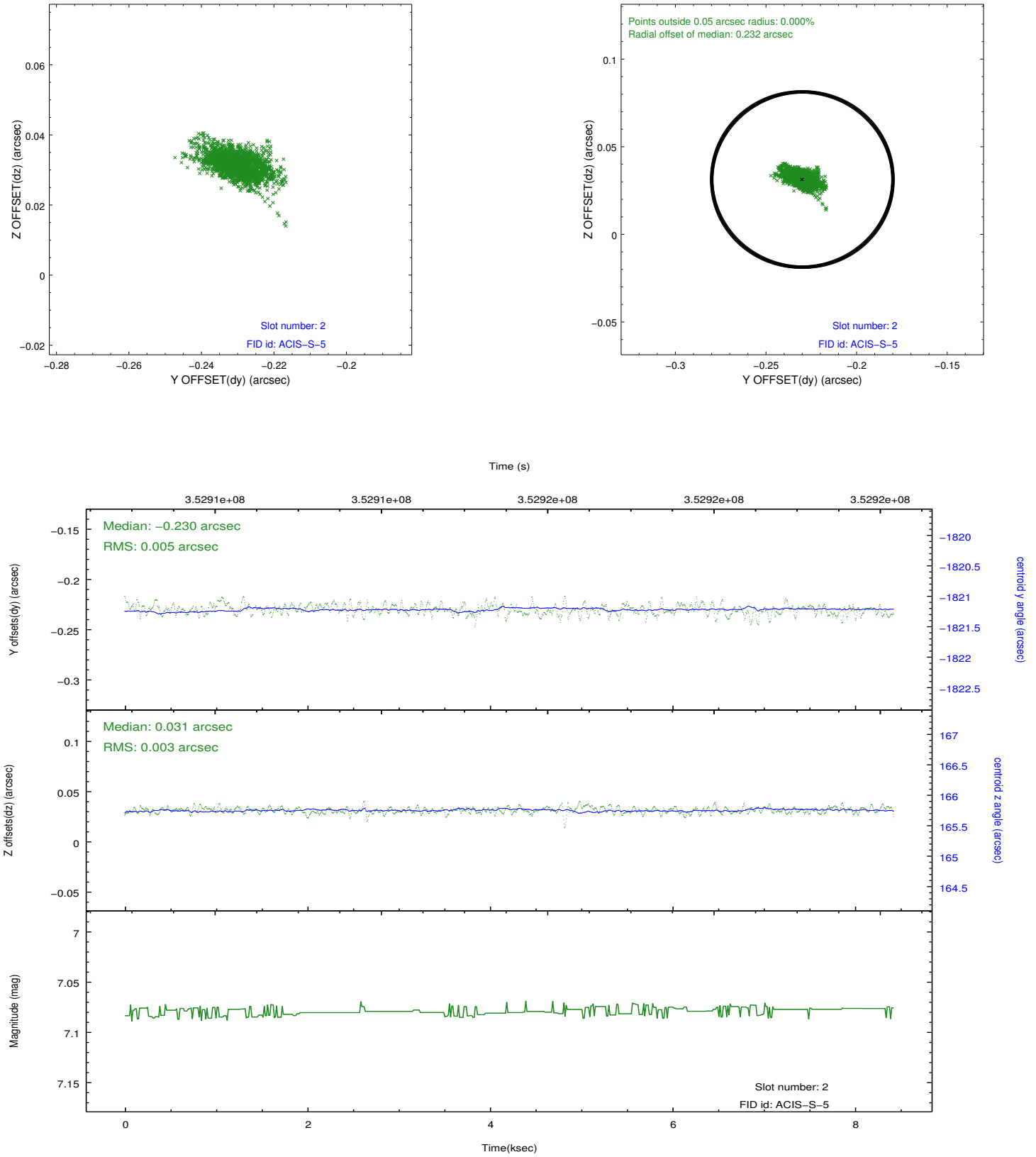
2.5.1 Slot 0



2.5.2 Slot 1



2.5.3 Slot 2



A Summary

A.1 Status

V&V Scientist	Joy Nichols
V&V Date (YYYY-MM-DD)	2012.06.07
V&V Edition	1
V&V Disposition and Status	OK
V&V Charge Time	7.95199997

A.2 Comments