

V&V Reference Report

L2 ASCDS Version : 8.4.5

Observation 10262 - L2 Version 2
Chandra X-Ray Center

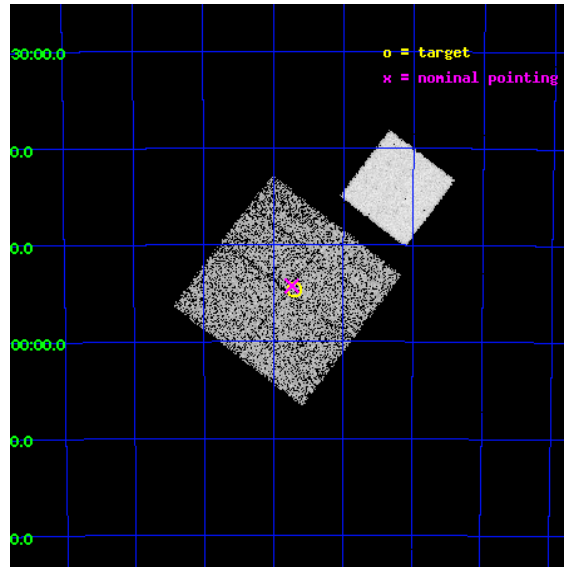
L2 Processing Date : Jun 7 2012

Contents

1	Front	2
2	OBI	3
2.1	OBI	3
2.1.1	Images	3
2.1.2	Bias	3
2.1.3	Parameters	4
2.1.4	Events	4
2.2	Compared Parameters	5
2.3	Aspect	6
2.4	Star Slots	9
2.4.1	Slot 3	9
2.4.2	Slot 4	10
2.4.3	Slot 5	11
2.4.4	Slot 6	12
2.4.5	Slot 7	13
2.5	FID Slots	14
2.5.1	Slot 0	14
2.5.2	Slot 1	15
2.5.3	Slot 2	16
A	Summary	17
A.1	Status	17
A.2	Comments	17

1 Front

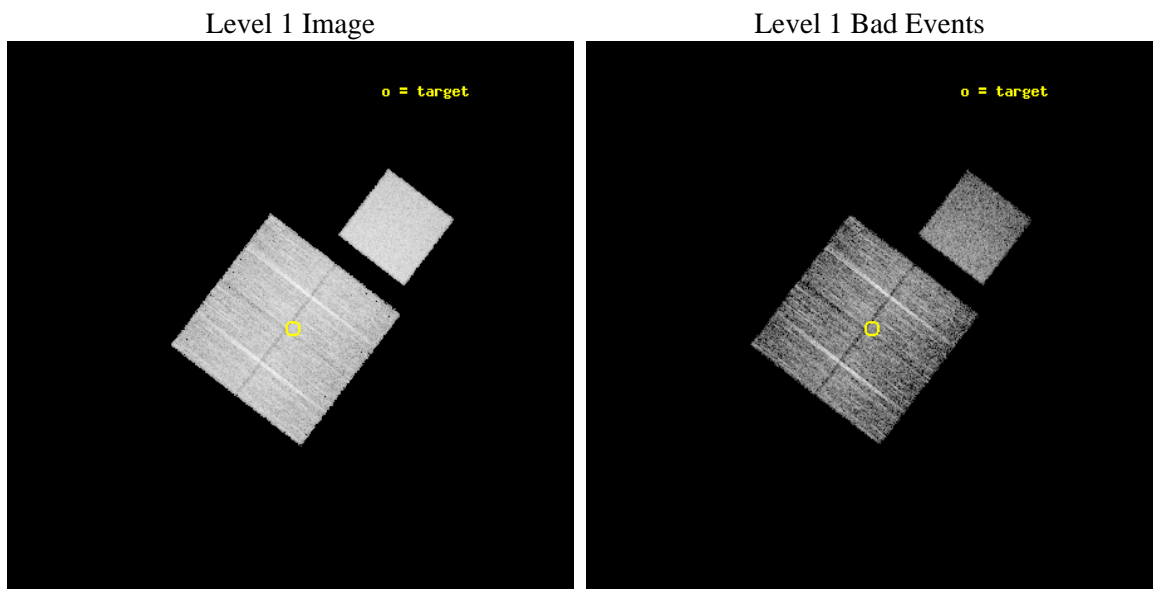
seq_num	701805	Sequence number
obs_id	10262	Observation id
title	Zeroing in on the sources of Ultrahigh Energy Cosmic Rays	Proposal
observer	Prof. Glennys Farrar	Principal investigator
object	2MASX J17544125-6054404	Source name
dtcycle	0	
cycle	P	events from which exps? Prim/Second/Both
ra_targ	268.674583	Observer's specified target RA [deg]
dec_targ	-60.910889	Observer's specified target Dec [deg]
ra_nom	268.68391046112	Nominal RA [deg]
dec_nom	-60.904247767243	Nominal Dec [deg]
roll_nom	37.481807846315	Nominal Roll [deg]
revision	2	Processing version of data
ontime	4875.5154456496	Sum of GTIs [s]
liveltime	4811.81324705	Livetime [s]
ontime0	4875.3923256397	Sum of GTIs [s]
ontime1	4875.433365643	Sum of GTIs [s]
ontime2	4875.4744056463	Sum of GTIs [s]
ontime3	4875.5154456496	Sum of GTIs [s]
ontime7	4875.5564856529	Sum of GTIs [s]
l2events	51656	Number of level 2 events



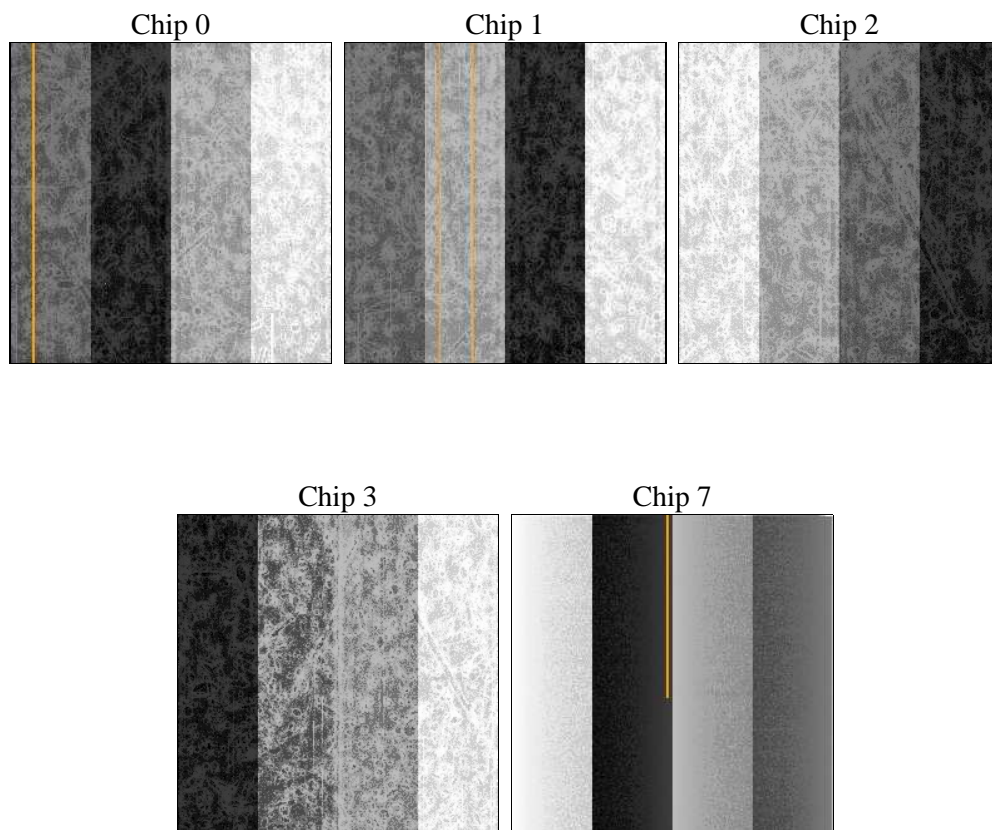
2 OBI

2.1 OBI

2.1.1 Images



2.1.2 Bias



2.1.3 Parameters

obi_num	0	Obi number	sched_exp_time	4842.519000	[s] Scheduled observation exposure time
ascdsver	8.4.5	Processing system revision	ontime	4875.5154456496	Sum of GTIs [s]
caldsver	4.4.10	 	ontime0	4875.3923256397	Sum of GTIs [s]
date	2012-06-07T16:30:02	Date and time of file creation	ontime1	4875.433365643	Sum of GTIs [s]
revision	2	Processing version of data	ontime2	4875.4744056463	Sum of GTIs [s]
			ontime3	4875.5154456496	Sum of GTIs [s]
			ontime7	4875.5564856529	Sum of GTIs [s]
			l1events	268717	Number of level 1 events

2.1.4 Events

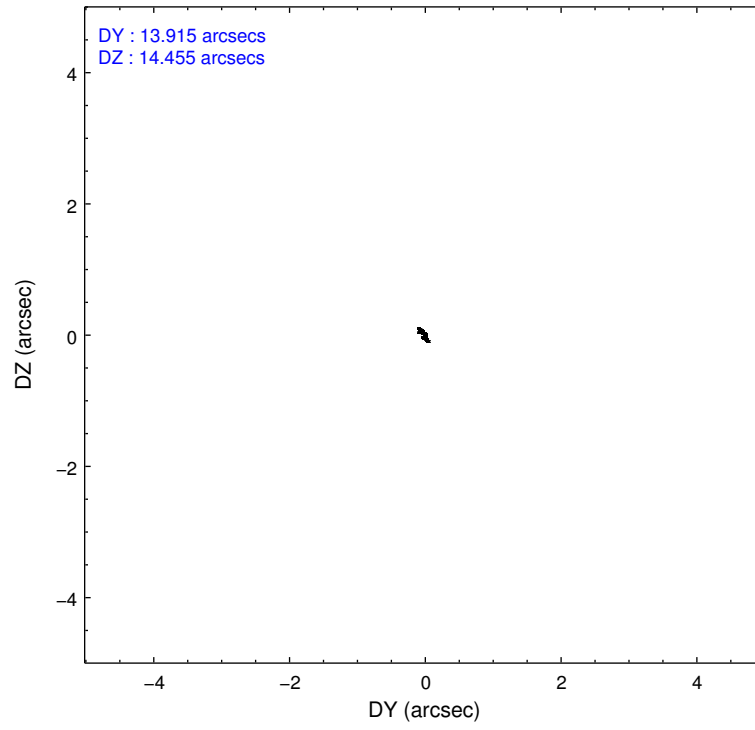
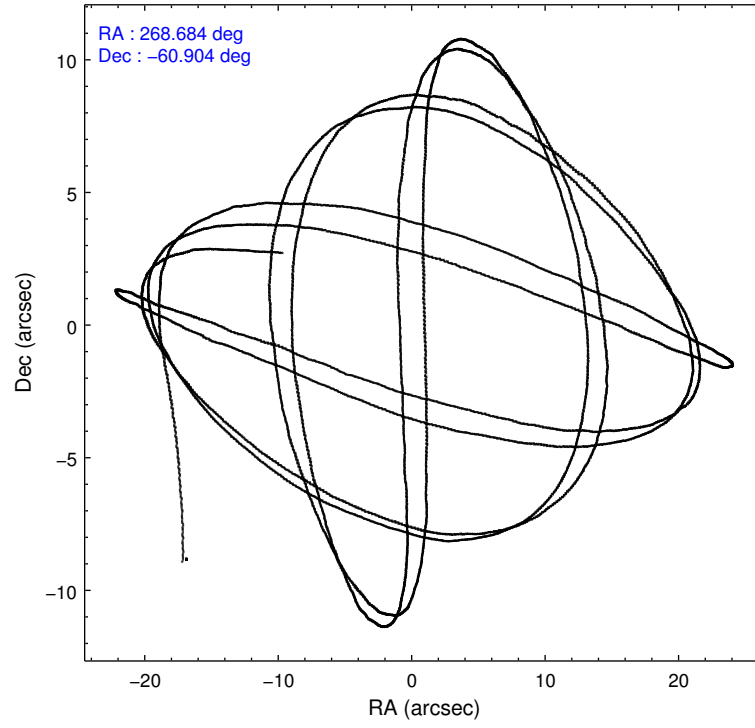
	ccd 0	ccd 1	ccd 2	ccd 3	ccd 7
level 1 events	46888	47667	52768	48991	72403
rejected events	40271	40804	46638	42702	42190
rejected %	85%	85%	88%	87%	58%

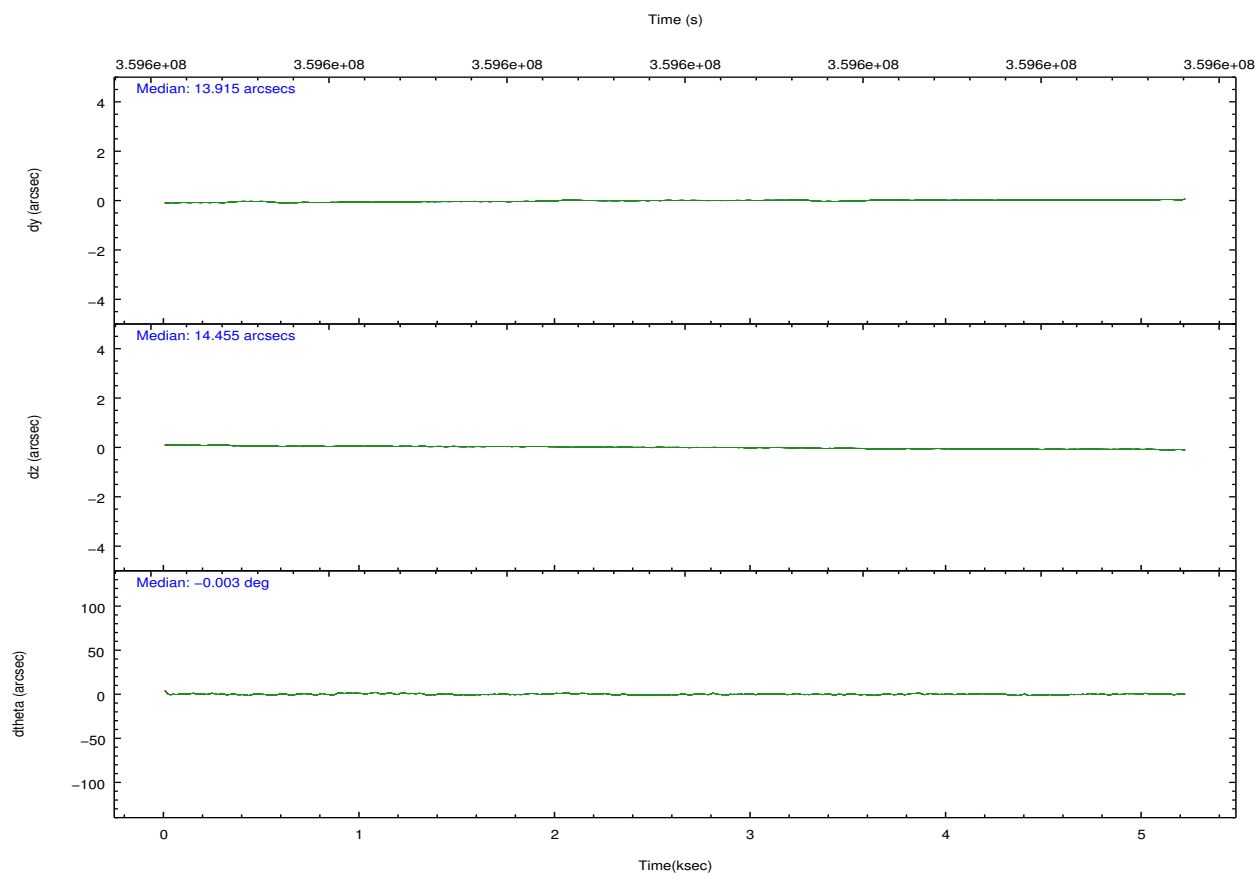
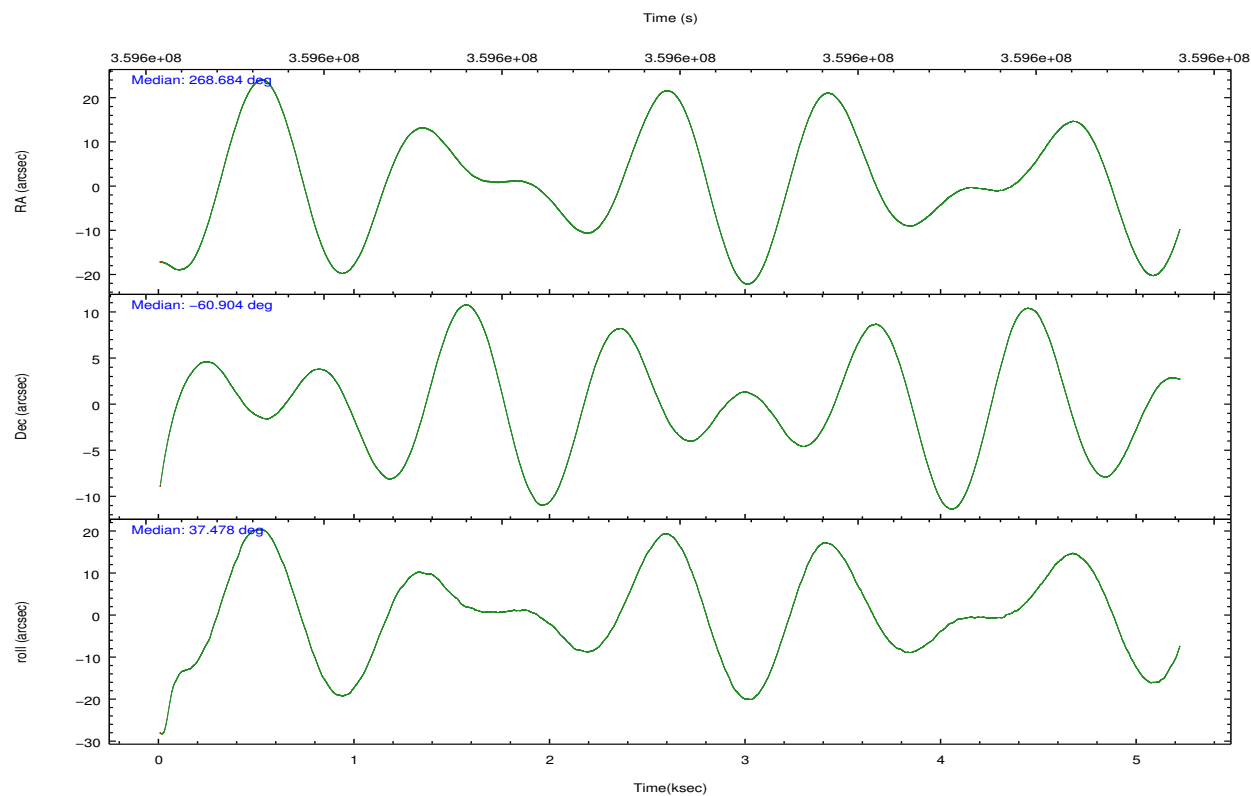
	ccd 0	ccd 1	ccd 2	ccd 3	ccd 7
grade 0 events	2816	2696	2547	2793	2769
	6%	5%	4%	5%	3%
grade 1 events	30	35	42	40	73
	0%	0%	0%	0%	0%
grade 2 events	1504	1642	1398	1218	6331
	3%	3%	2%	2%	8%
grade 3 events	605	570	570	614	2535
	1%	1%	1%	1%	3%
grade 4 events	580	603	567	579	2516
	1%	1%	1%	1%	3%
grade 5 events	2193	2395	2137	2470	6877
	4%	5%	4%	5%	9%
grade 6 events	1119	1362	1057	1092	16086
	2%	2%	2%	2%	22%
grade 7 events	38041	38364	44450	40185	35216
	81%	80%	84%	82%	48%

2.2 Compared Parameters

Parameter	Planned	Actual	Parameter	Planned	Actual
Instrument	ACIS	ACIS	Obspar format version number	7	7
Detector	ACIS-012367	ACIS-01237	Obspar file type	PREDICTED	ACTUAL
Grating	NONE	NONE	Obspar update status	NONE	UPDATED
Data mode	FAINT	FAINT	CCD I0 on	Y	Y
Observation mode	POINTING	POINTING	CCD I1 on	Y	Y
[deg] Pointing RA	268.662710	268.683910461124	CCD I2 on	Y	Y
[deg] Pointing Dec	-60.929733	-60.90424776724301	CCD I3 on	Y	Y
[deg] Pointing Roll	37.254635	37.48180784631536	CCD S0 on	N	N
[mm] SIM focus pos	-0.782348	-0.7809083437167272	CCD S1 on	N	N
[mm] SIM defocus	0	0.001439871863259334	CCD S2 on	O1	N
[mm] SIM translation stage pos	-233.592463	-233.5874344608287	CCD S3 on	O2	Y
[mm] SIM translation stage offset	0	-0.005018542100998502	CCD S4 on	N	N
[s] Observation start time (MET)	359598717.184000	359597552.05315	CCD S5 on	N	N
Observation start date	2009-05-25T00:30:51	2009-05-25T00:12:32	Number of optional ACIS chips dropped	0	0
[s] Observation end time (MET)	359603560.184000	359603789.69096	On-chip summing requested	N	N
Observation end date	2009-05-25T01:51:34	2009-05-25T01:56:29	Subarray requested	NONE	NONE
Read mode	TIMED	TIMED	Alternating exposures requested	N	N
			[s] Primary exposure time	0.000000	3.1

2.3 Aspect



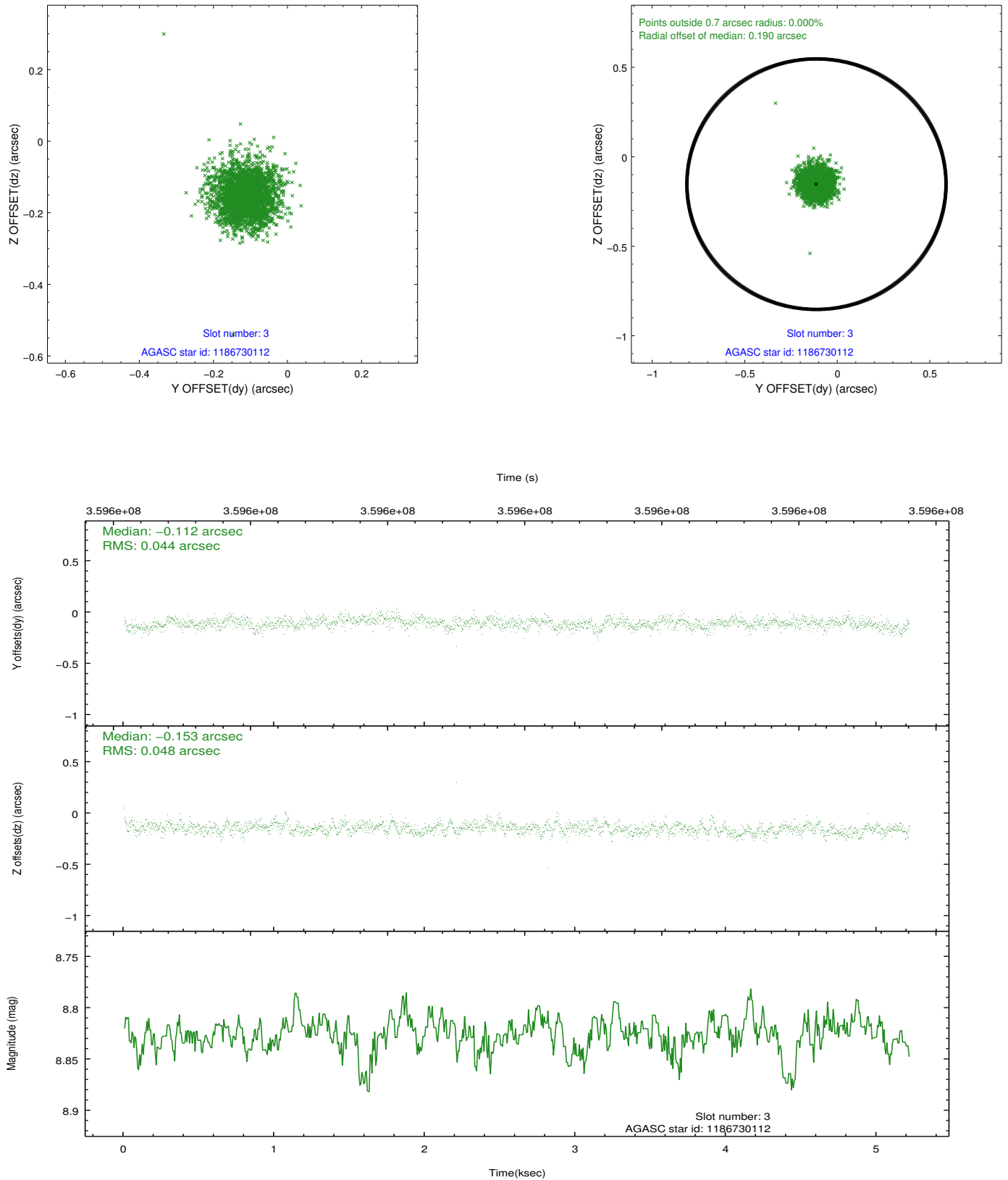


Slot Statistics

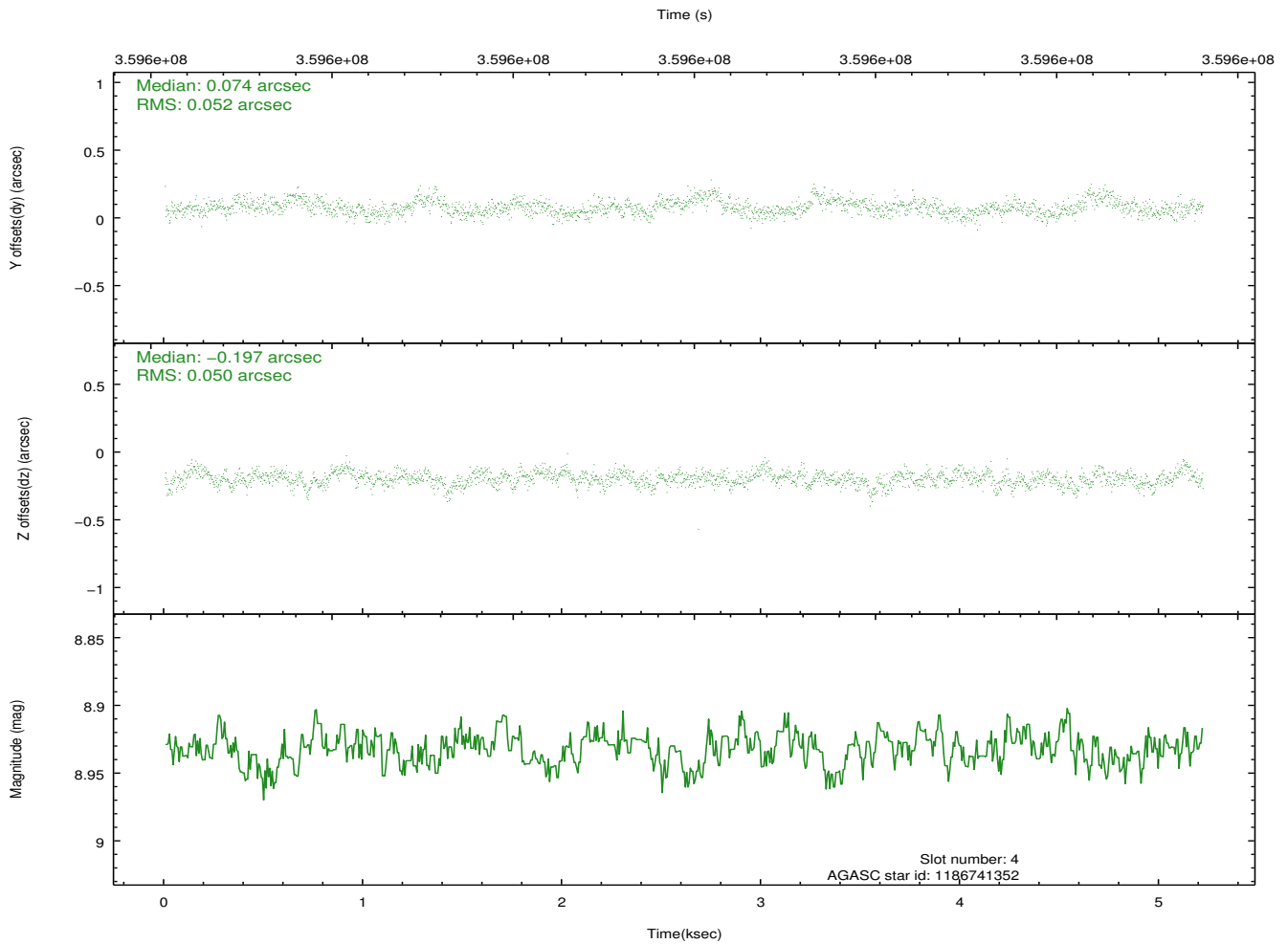
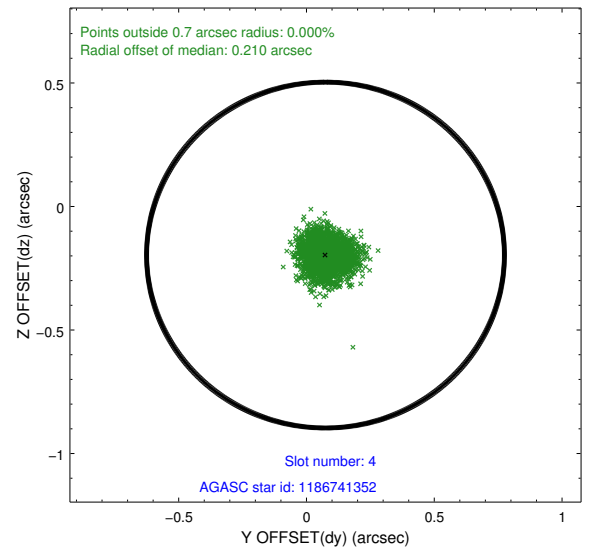
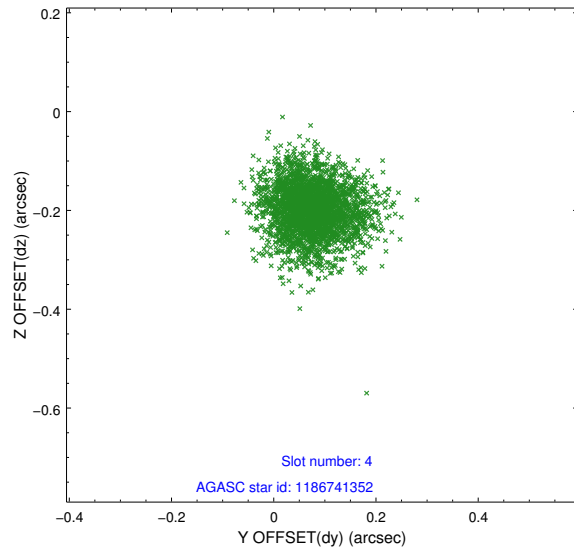
slot	status	id	mag	n_pts	med_dy	med_dz	dr1	dr2	ra	dec	mean_y	mean_z
0	FID	ACIS-I-1	7.04	1273	-0.011	0.015	0.012	0.019	0.000000	0.000000	925.59	-838.00
1	FID	ACIS-I-4	6.96	1271	0.166	0.019	0.011	0.016	0.000000	0.000000	2146.43	1061.24
2	FID	ACIS-I-5	7.03	1273	-0.254	0.038	0.011	0.018	0.000000	0.000000	-1821.19	1060.37
3	GUIDE	1186730112	8.83	2545	-0.112	-0.153	0.068	0.112	268.373835	-60.480154	571.61	1597.14
4	GUIDE	1186741352	8.93	2542	0.074	-0.197	0.077	0.125	268.256187	-60.946320	-602.31	381.05
5	GUIDE	1186742328	8.24	2543	-0.085	0.065	0.086	0.144	269.660512	-60.679566	1937.43	-358.57
6	GUIDE	1186744728	9.24	2542	0.126	0.172	0.083	0.131	268.091519	-61.288638	-1569.53	-434.21
7	GUIDE	1186747624	8.26	2542	-0.010	0.116	0.071	0.112	269.229326	-61.440683	-339.92	-2058.19

2.4 Star Slots

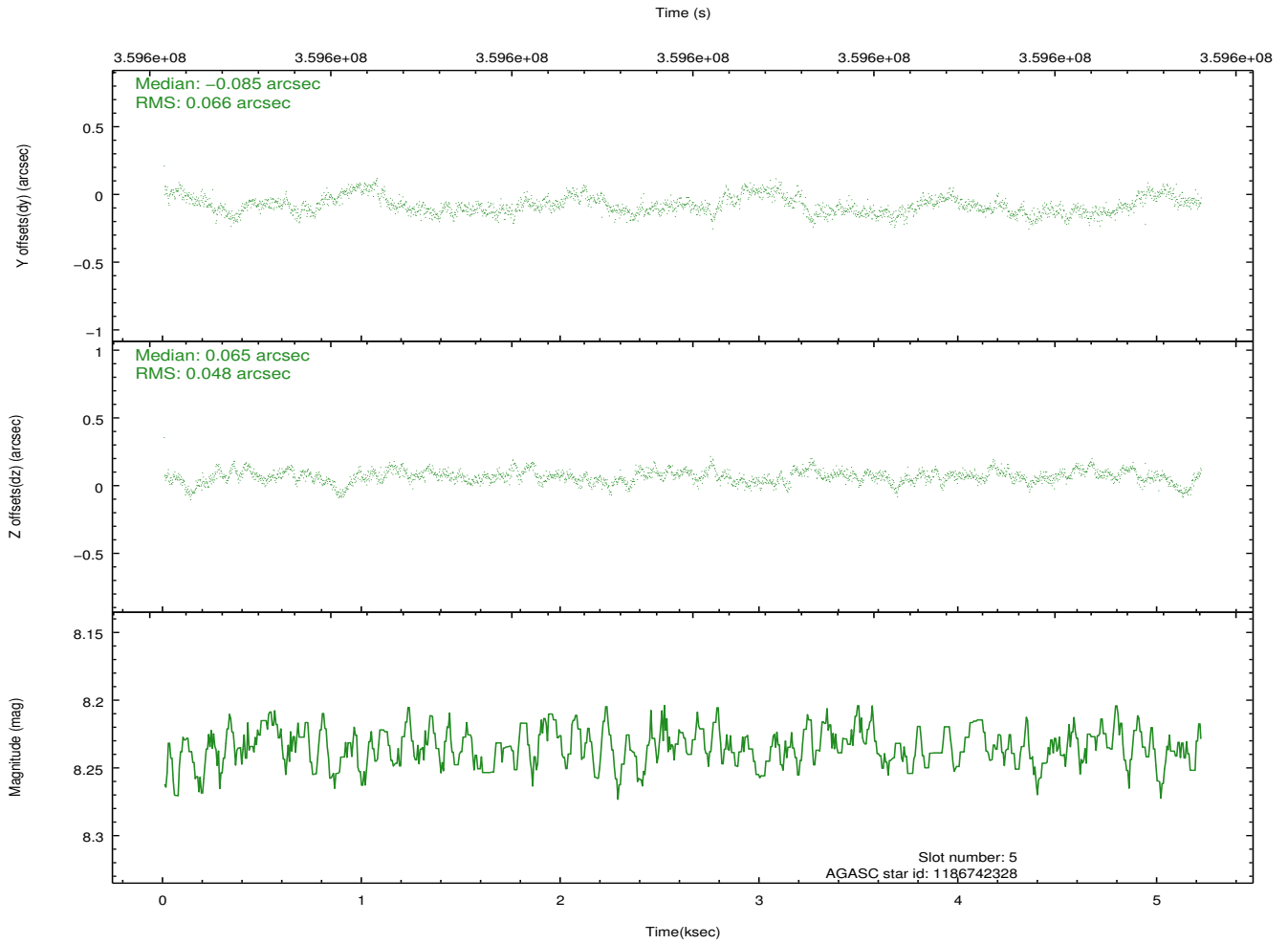
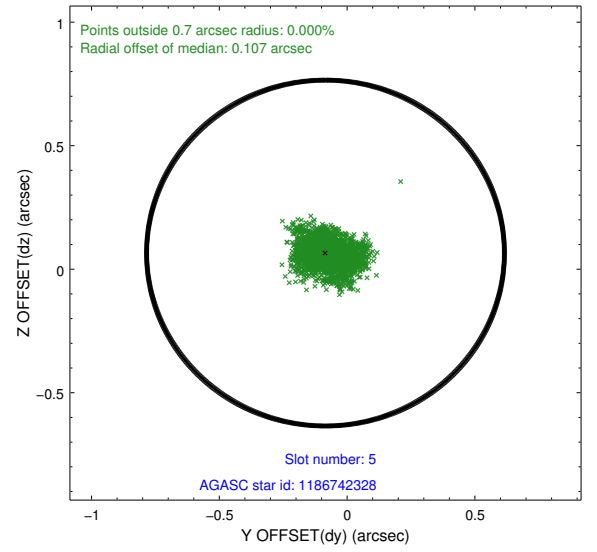
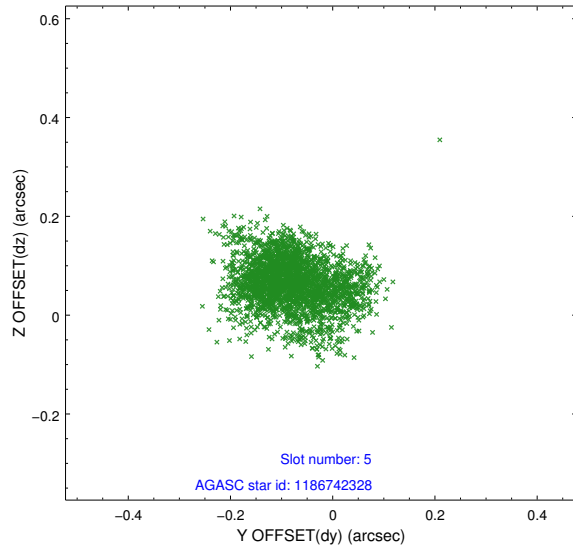
2.4.1 Slot 3



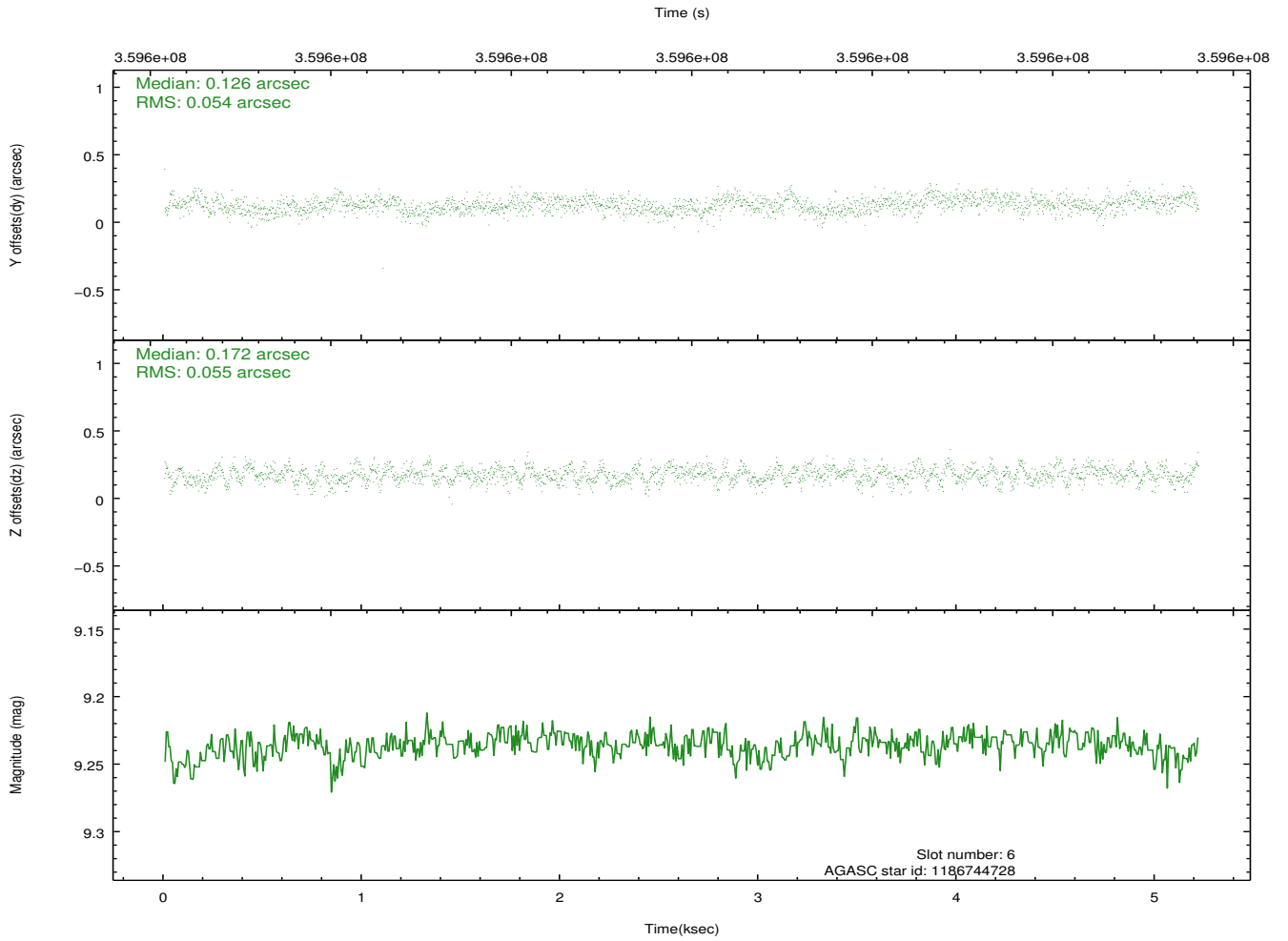
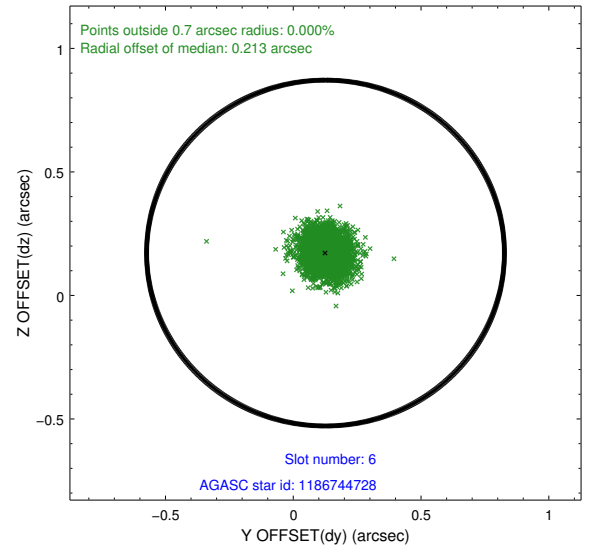
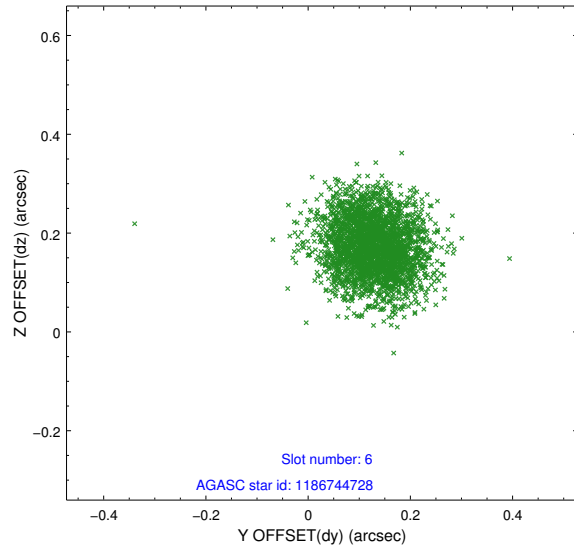
2.4.2 Slot 4



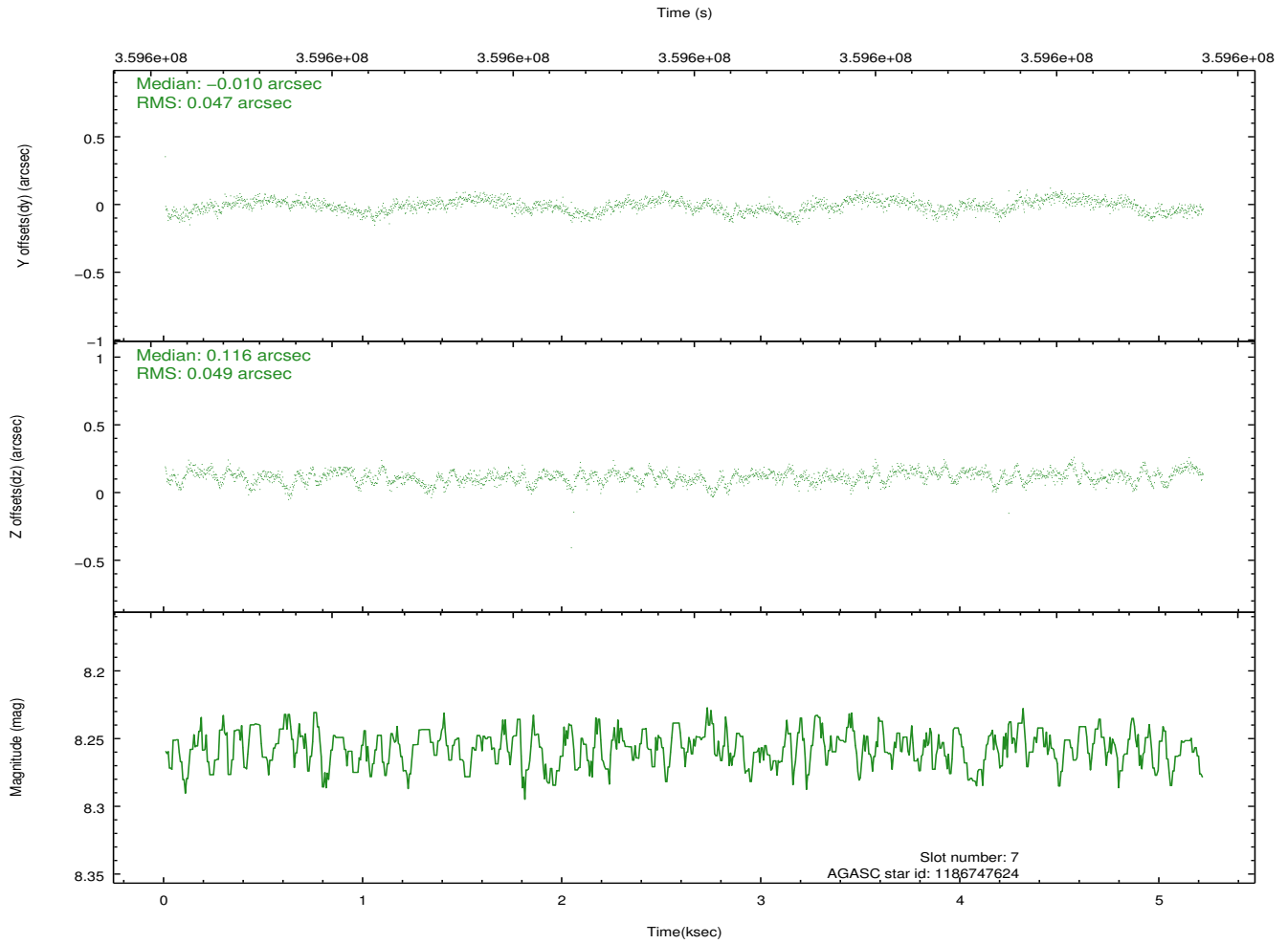
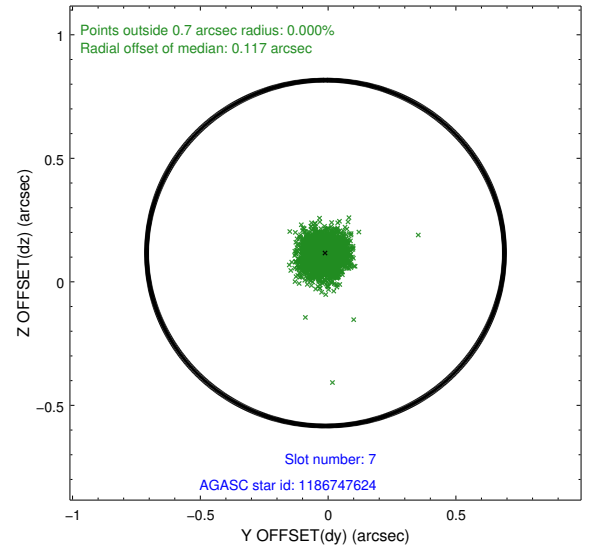
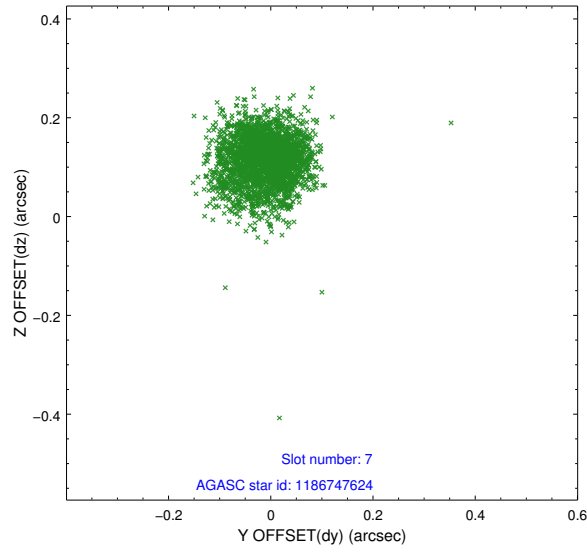
2.4.3 Slot 5



2.4.4 Slot 6

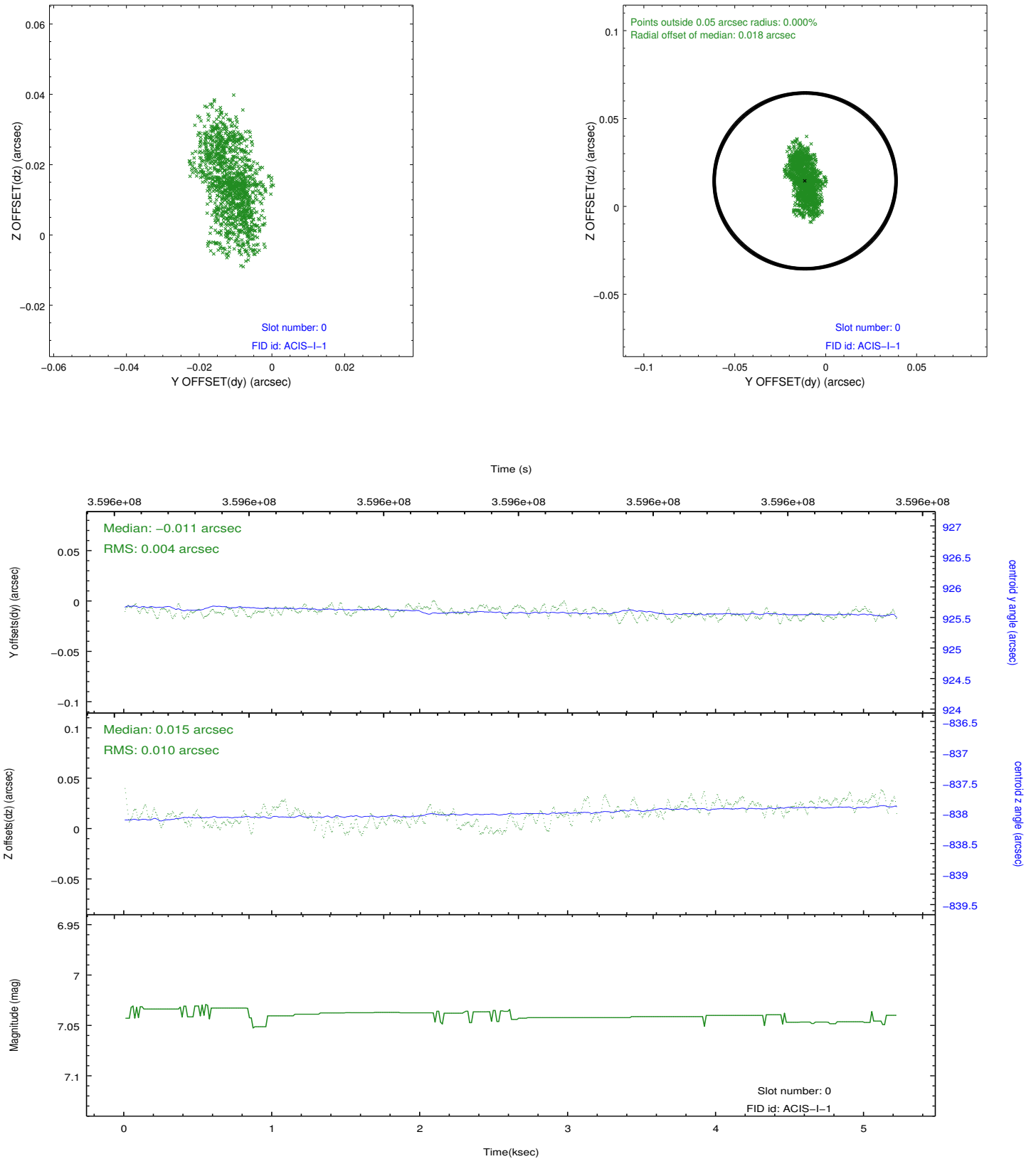


2.4.5 Slot 7

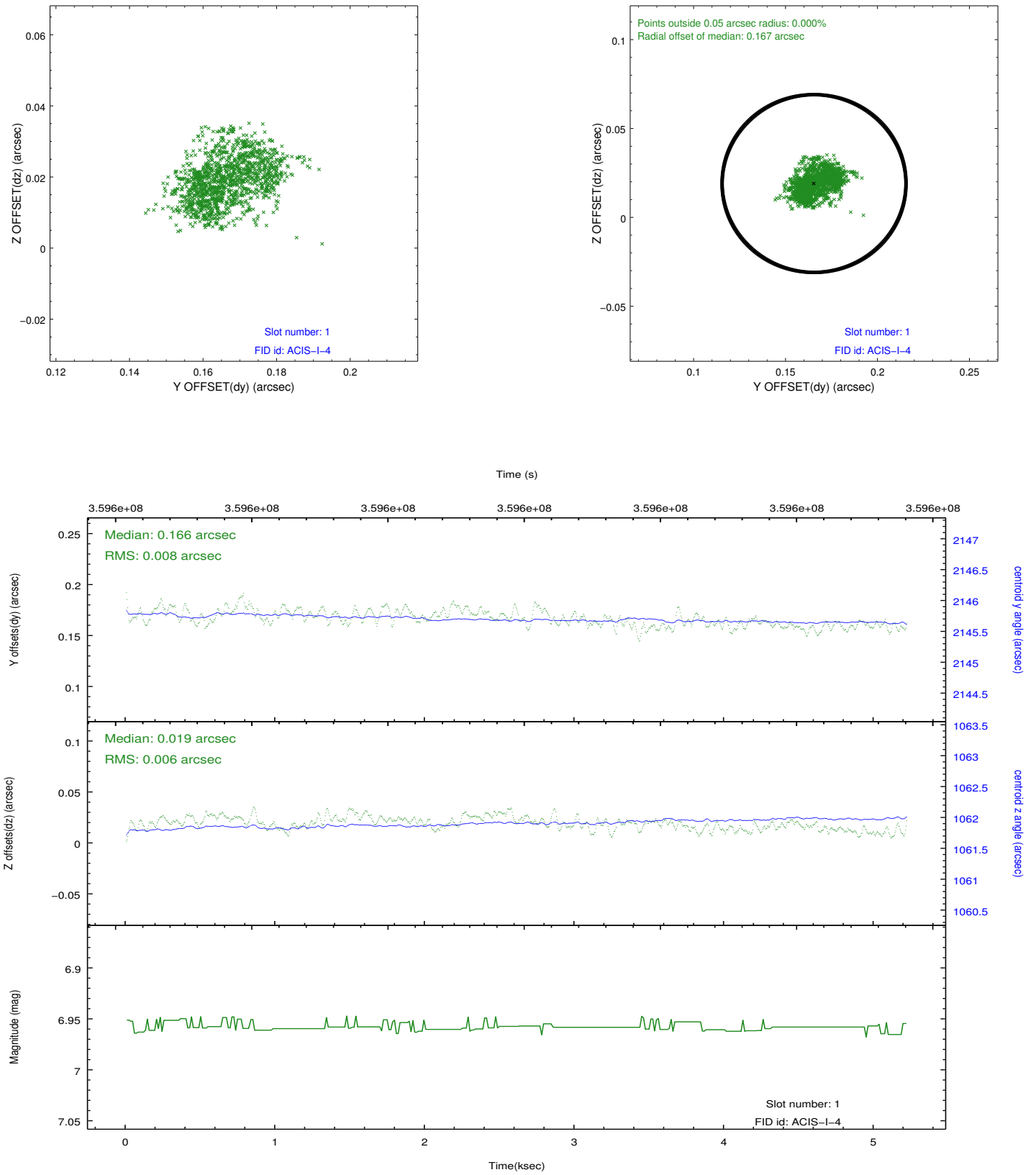


2.5 FID Slots

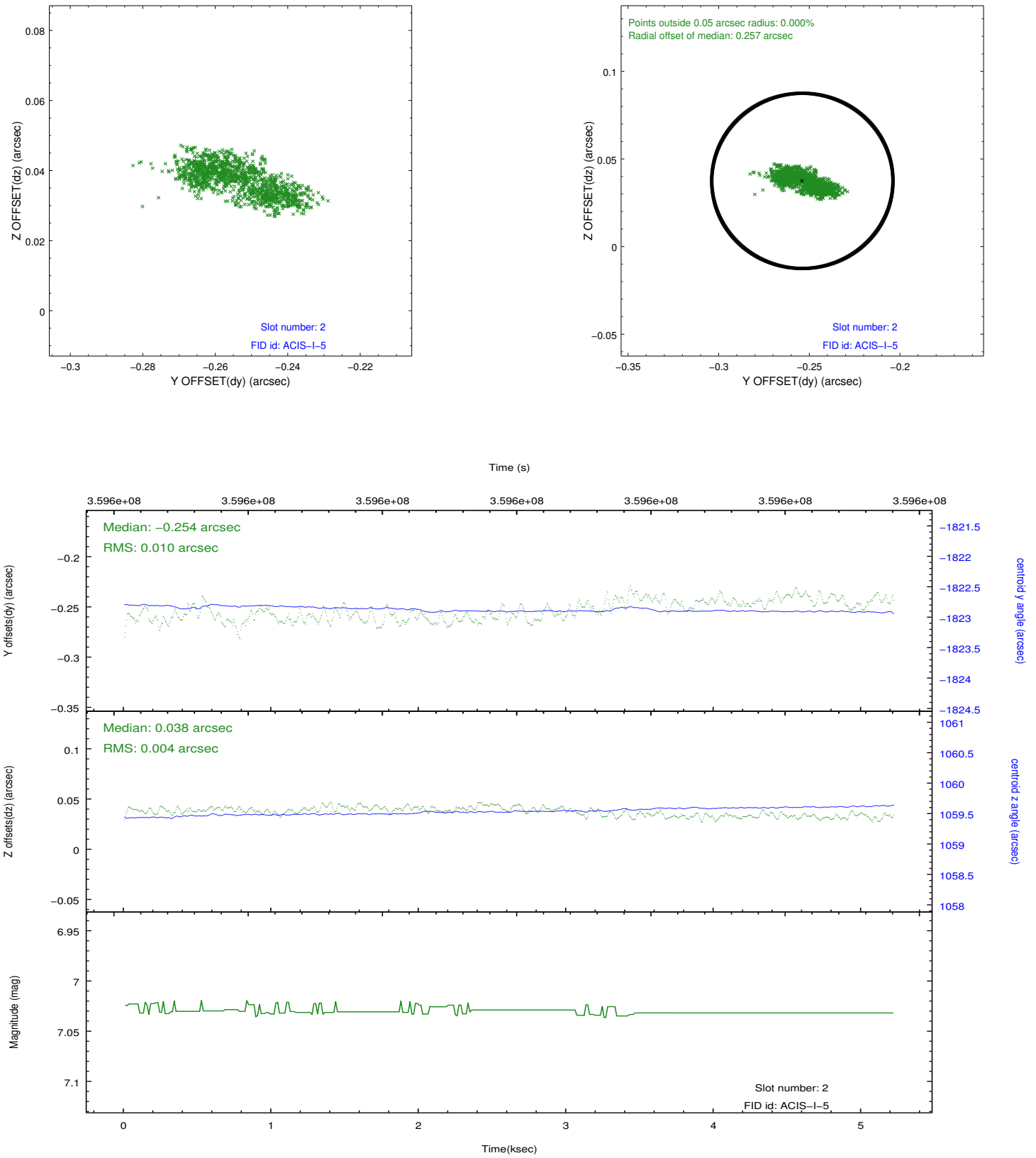
2.5.1 Slot 0



2.5.2 Slot 1



2.5.3 Slot 2



A Summary

A.1 Status

V&V Scientist	Beth Sundheim
V&V Date (YYYY-MM-DD)	2012.06.11
V&V Edition	1
V&V Disposition and Status	OK
V&V Charge Time	4.87630003

A.2 Comments

Optional chip S2 was not utilized.