

V&V Reference Report

L2 ASCDS Version : 8.4.5

Observation 10242 - L2 Version 2
Chandra X-Ray Center

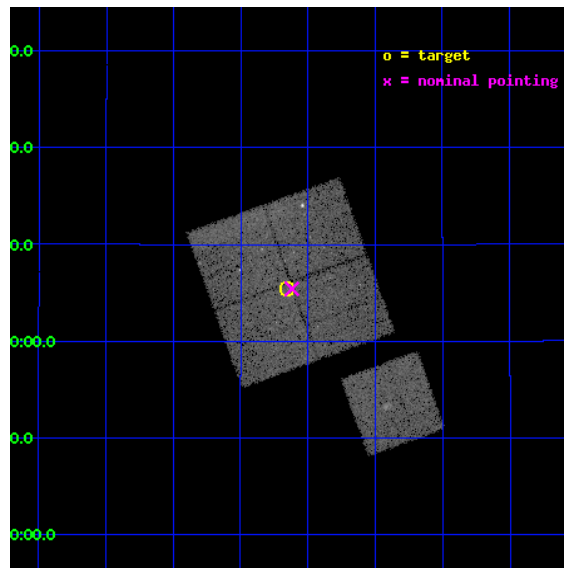
L2 Processing Date : Jun 6 2012

Contents

1	Front	2
2	OBI	3
2.1	OBI	3
2.1.1	Images	3
2.1.2	Bias	3
2.1.3	Parameters	4
2.1.4	Events	4
2.2	Compared Parameters	5
2.3	Aspect	6
2.4	Star Slots	9
2.4.1	Slot 3	9
2.4.2	Slot 4	10
2.4.3	Slot 5	11
2.4.4	Slot 6	12
2.4.5	Slot 7	13
2.5	FID Slots	14
2.5.1	Slot 0	14
2.5.2	Slot 1	15
2.5.3	Slot 2	16
A	Summary	17
A.1	Status	17
A.2	Comments	17

1 Front

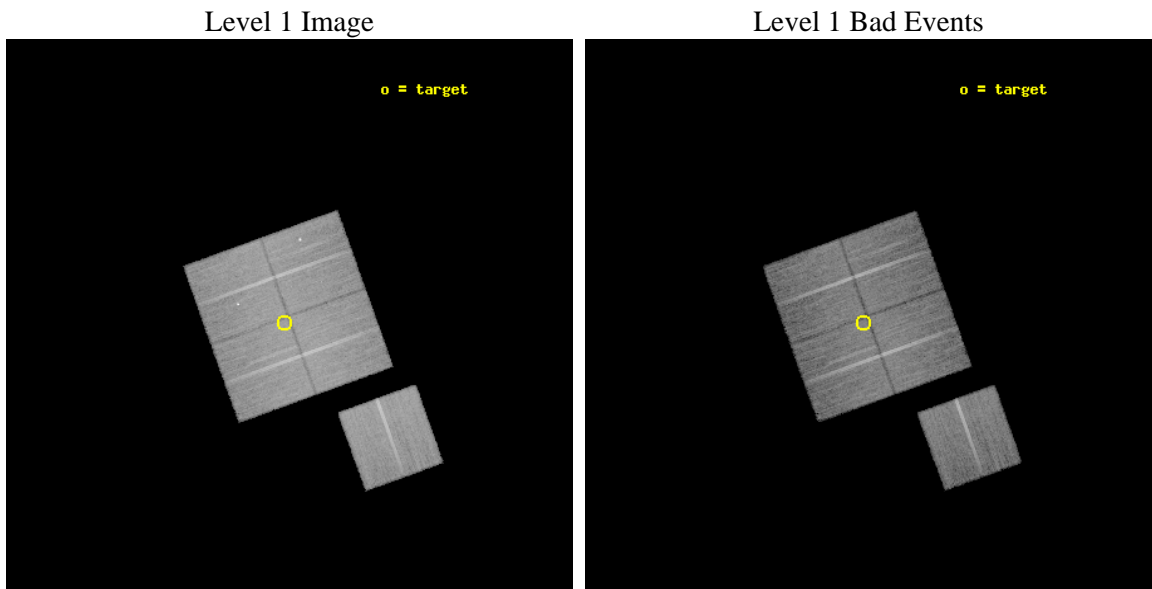
seq_num	701785	Sequence number
obs_id	10242	Observation id
title	The multi-faceted X-ray activity of low-redshift active galaxies	P
observer	Prof Mark Birkinshaw	Principal investigator
object	3C 326	Source name
dtcycle	0	
cycle	P	events from which exps? Prim/Second/Both
ra_targ	238.038333	Observer's specified target RA [deg]
dec_targ	20.089917	Observer's specified target Dec [deg]
ra_nom	238.02971813072	Nominal RA [deg]
dec_nom	20.090293380958	Nominal Dec [deg]
roll_nom	160.21163524821	Nominal Roll [deg]
revision	2	Processing version of data
ontime	18541.100142598	Sum of GTIs [s]
livetime	18298.847019476	Livetime [s]
ontime0	18534.818181992	Sum of GTIs [s]
ontime1	18541.100142598	Sum of GTIs [s]
ontime2	18541.100142598	Sum of GTIs [s]
ontime3	18541.100142598	Sum of GTIs [s]
ontime6	18537.959132373	Sum of GTIs [s]
l2events	74840	Number of level 2 events



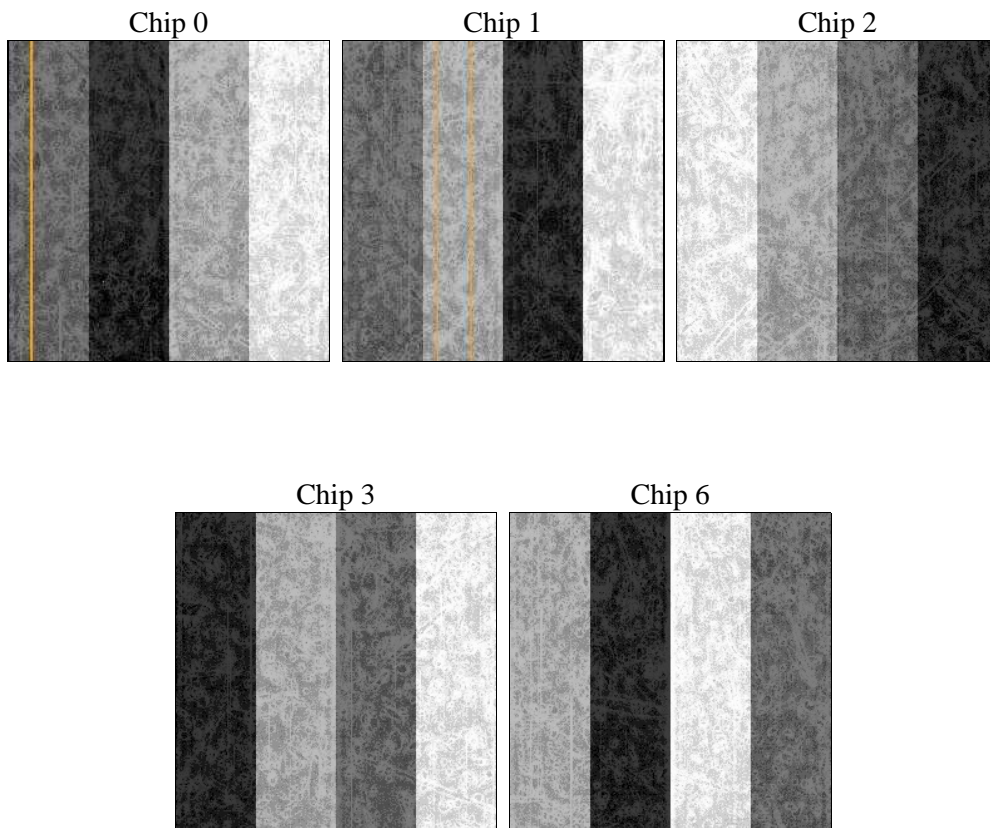
2 OBI

2.1 OBI

2.1.1 Images



2.1.2 Bias



2.1.3 Parameters

obi_num	0	Obi number	sched_exp_time	18500.000000	[s] Scheduled observation exposure time
ascdsver	8.4.5	Processing system revision	ontime	18541.100142598	Sum of GTIs [s]
caldsver	4.4.10	 	ontime0	18534.818181992	Sum of GTIs [s]
date	2012-06-06T23:56:29	Date and time of file creation	ontime1	18541.100142598	Sum of GTIs [s]
revision	2	Processing version of data	ontime2	18541.100142598	Sum of GTIs [s]
			ontime3	18541.100142598	Sum of GTIs [s]
			ontime6	18537.959132373	Sum of GTIs [s]
			l1events	797968	Number of level 1 events

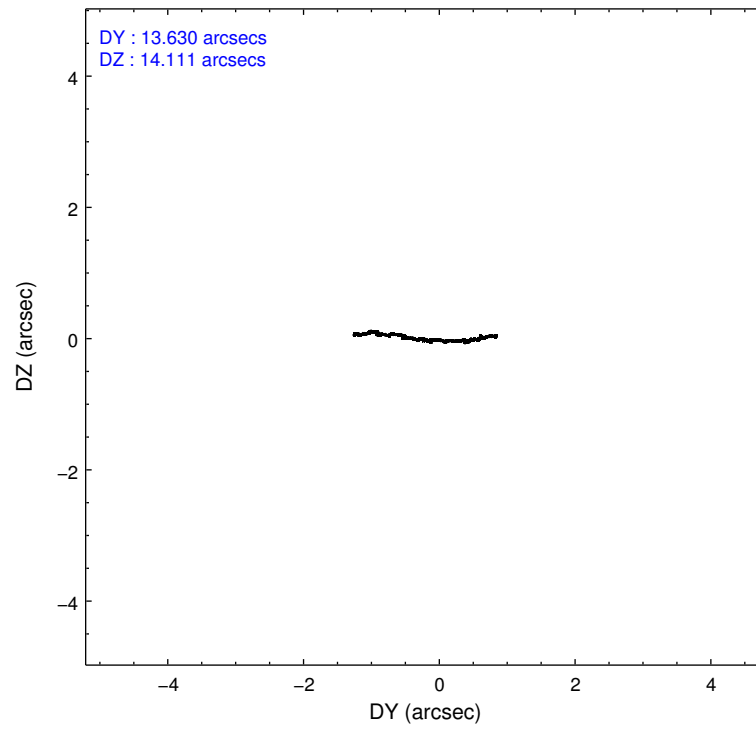
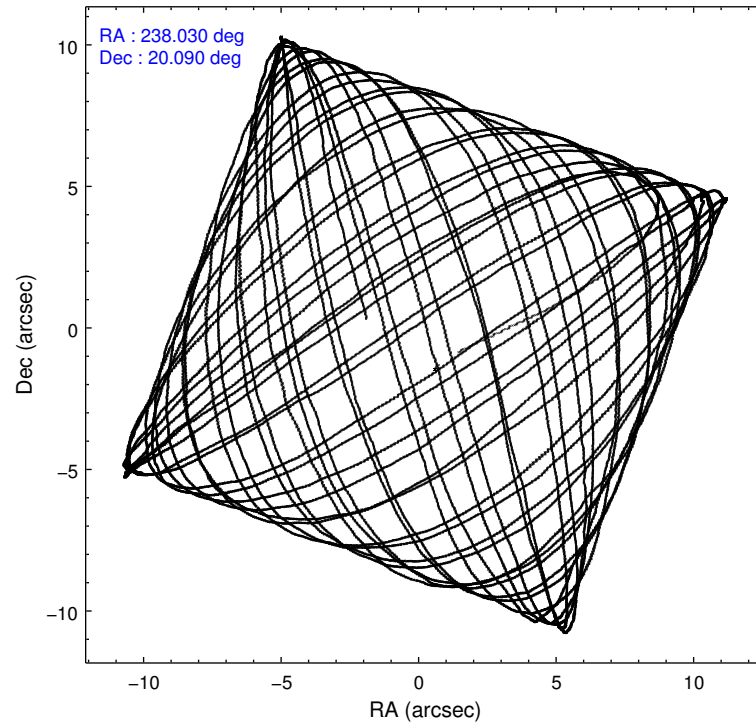
2.1.4 Events

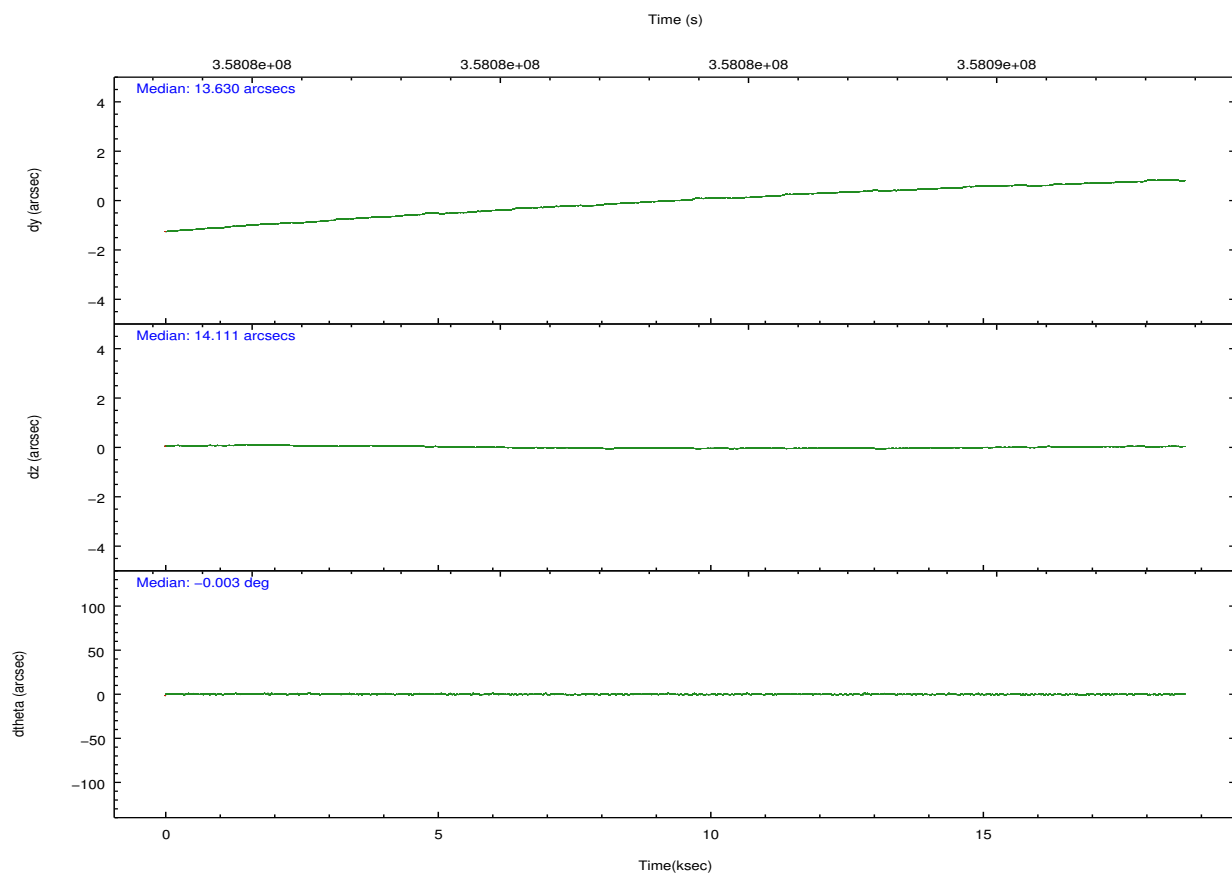
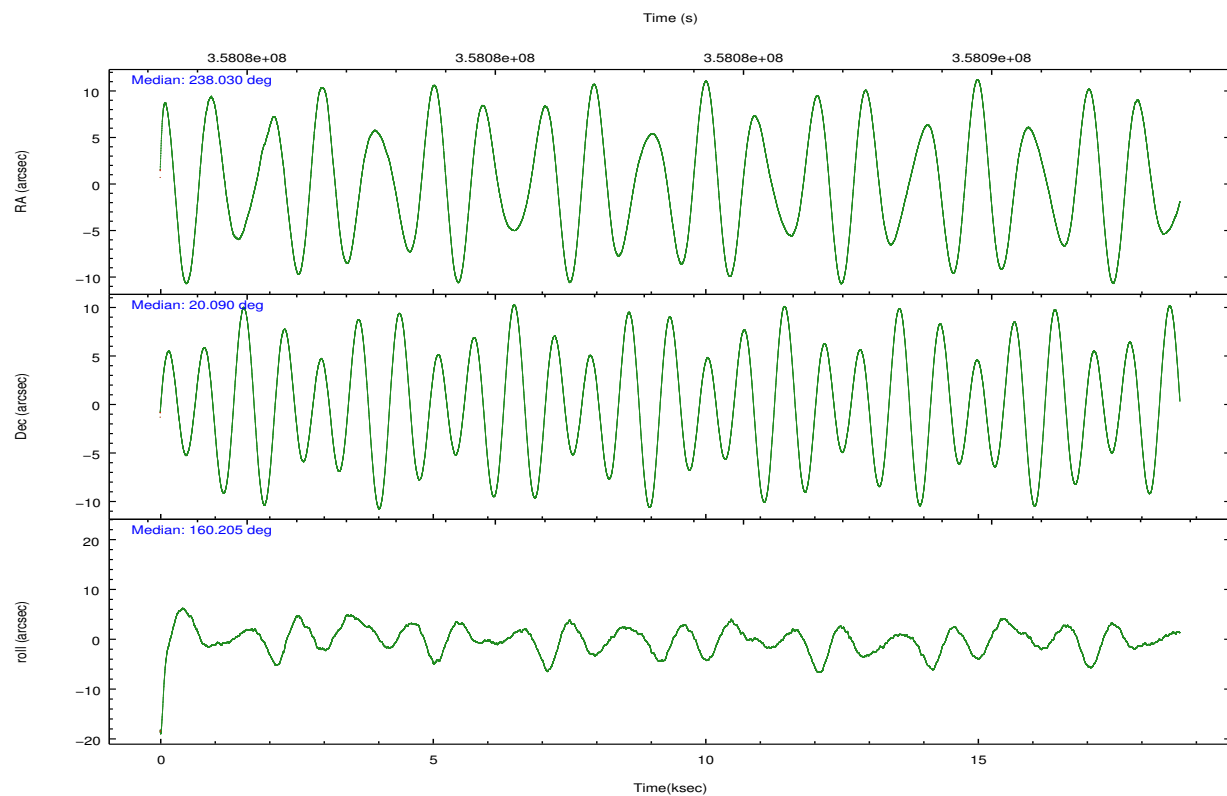
	ccd 0	ccd 1	ccd 2	ccd 3	ccd 6		ccd 0	ccd 1	ccd 2	ccd 3	ccd 6
level 1 events	154600	155648	166507	158765	162448	grade 0 events	8116	8617	6083	5450	6090
rejected events	135254	134995	149931	143254	145442		5%	5%	3%	3%	3%
rejected %	87%	86%	90%	90%	89%	grade 1 events	86	117	94	92	93
							0%	0%	0%	0%	0%
						grade 2 events	4369	4300	4048	3400	3625
							2%	2%	2%	2%	2%
						grade 3 events	1897	1940	1751	1778	1825
							1%	1%	1%	1%	1%
						grade 4 events	1706	2016	1753	1718	1830
							1%	1%	1%	1%	1%
						grade 5 events	5789	6485	5525	6559	6413
							3%	4%	3%	4%	3%
						grade 6 events	3263	3786	2945	3176	3641
							2%	2%	1%	2%	2%
						grade 7 events	129374	128387	144308	136592	138931
							83%	82%	86%	86%	85%

2.2 Compared Parameters

Parameter	Planned	Actual	Parameter	Planned	Actual
Instrument	ACIS	ACIS	Obspar format version number	7	7
Detector	ACIS-01236	ACIS-01236	Obspar file type	PREDICTED	ACTUAL
Grating	NONE	NONE	Obspar update status	NONE	UPDATED
Data mode	VFAINT	VFAINT	CCD I0 on	Y	Y
Observation mode	POINTING	POINTING	CCD I1 on	Y	Y
[deg] Pointing RA	238.058526	238.0297181307203	CCD I2 on	Y	Y
[deg] Pointing Dec	20.095257	20.09029338095768	CCD I3 on	Y	Y
[deg] Pointing Roll	159.993059	160.211635248213	CCD S0 on	N	N
[mm] SIM focus pos	-0.782348	-0.7809083437167272	CCD S1 on	N	N
[mm] SIM defocus	0	0.001439871863259334	CCD S2 on	O1	Y
[mm] SIM translation stage pos	-233.592463	-233.5874344608287	CCD S3 on	N	N
[mm] SIM translation stage offset	0	-0.005018542100998502	CCD S4 on	N	N
[s] Observation start time (MET)	358074374.184000	358073435.91474	CCD S5 on	N	N
Observation start date	2009-05-07T09:05:08	2009-05-07T08:50:35	Number of optional ACIS chips dropped	0	0
[s] Observation end time (MET)	358092874.184000	358094403.82829	On-chip summing requested	N	N
Observation end date	2009-05-07T14:13:28	2009-05-07T14:40:03	Subarray requested	NONE	NONE
Read mode	TIMED	TIMED	Alternating exposures requested	N	N
			[s] Primary exposure time	0.000000	3.1

2.3 Aspect



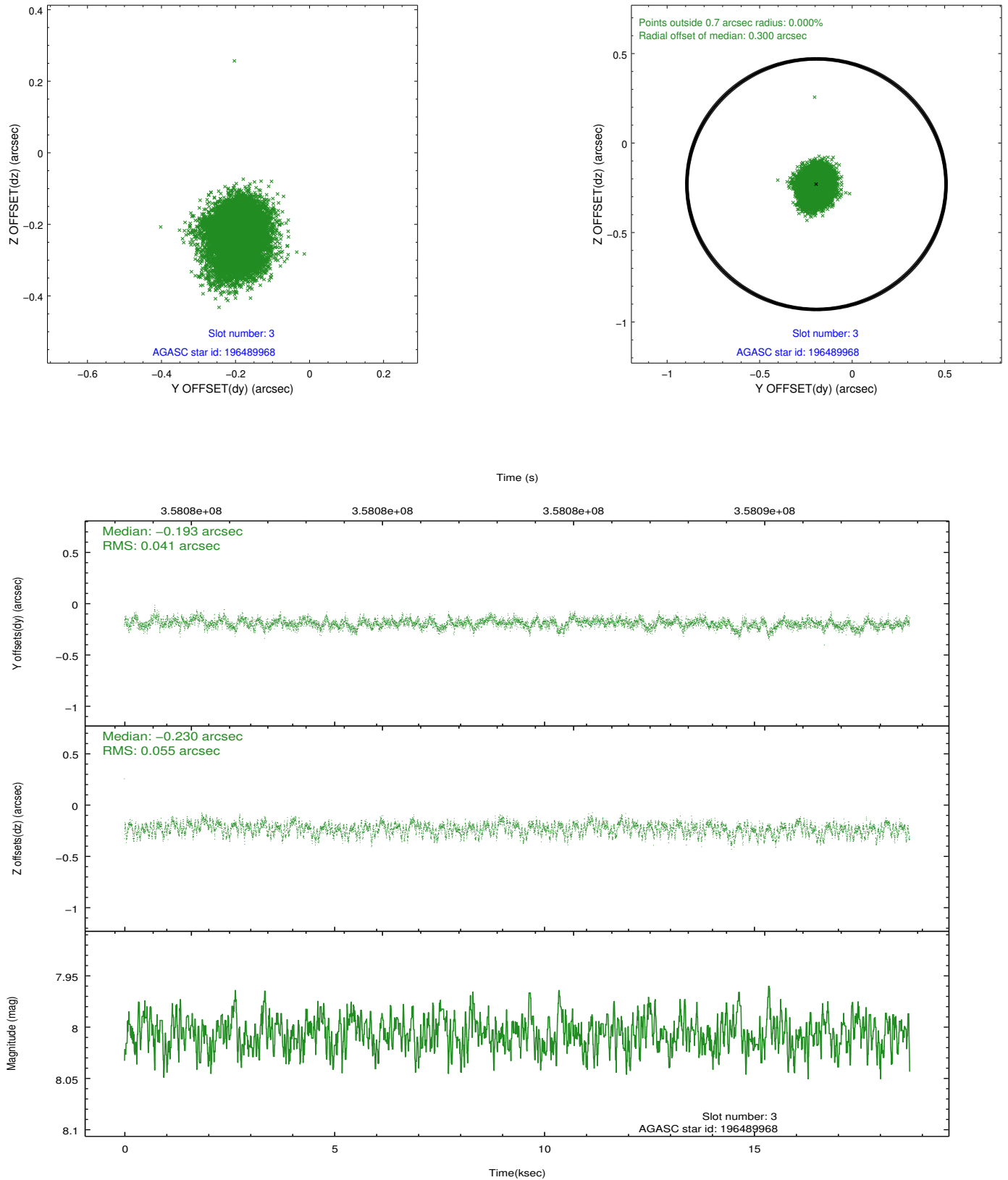


Slot Statistics

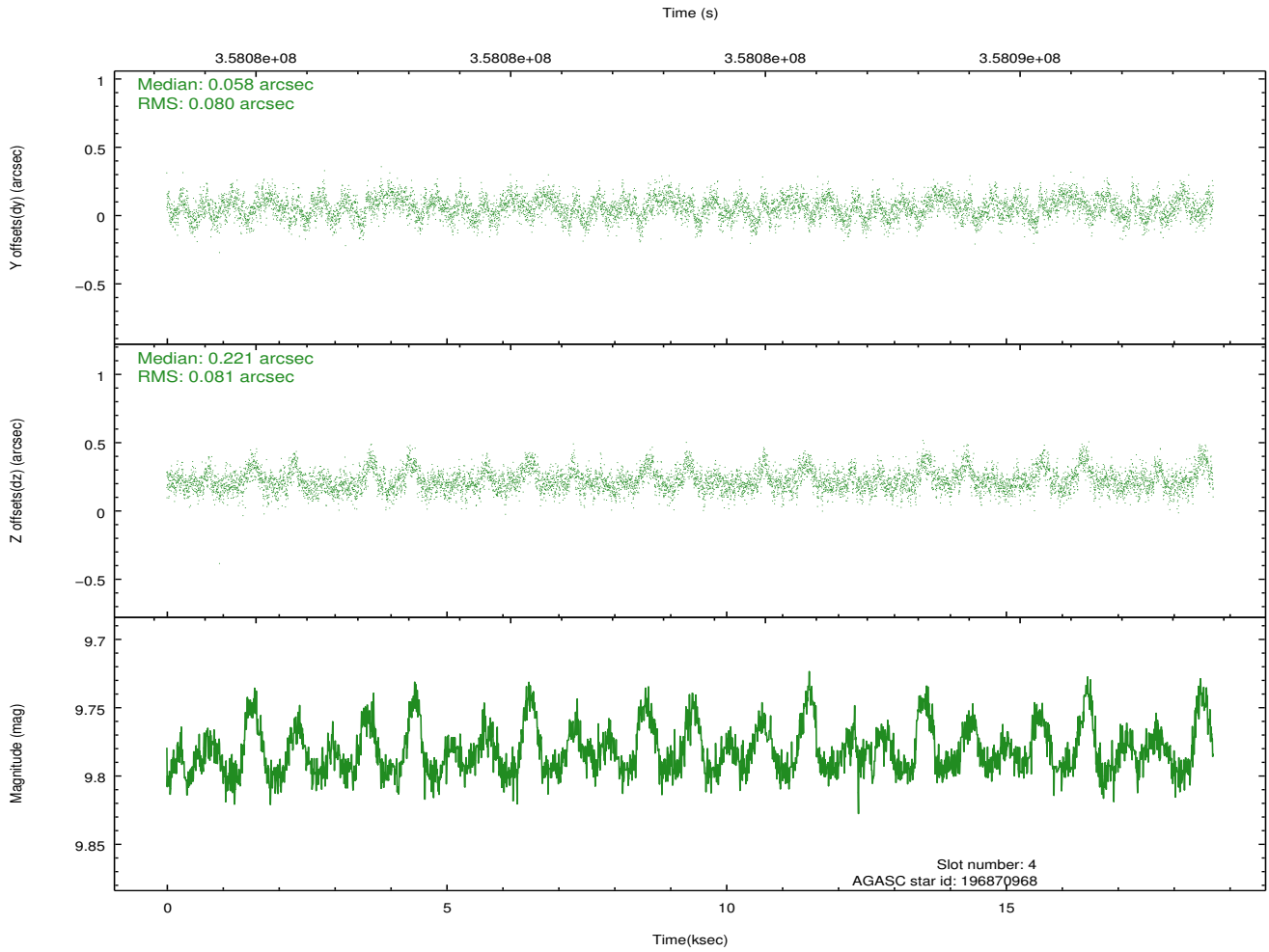
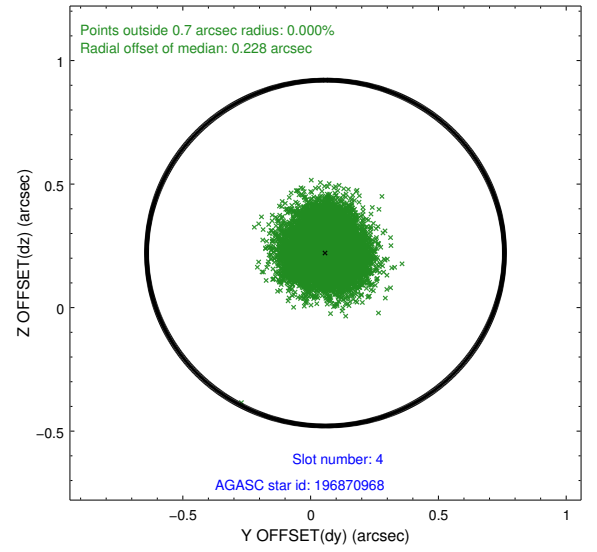
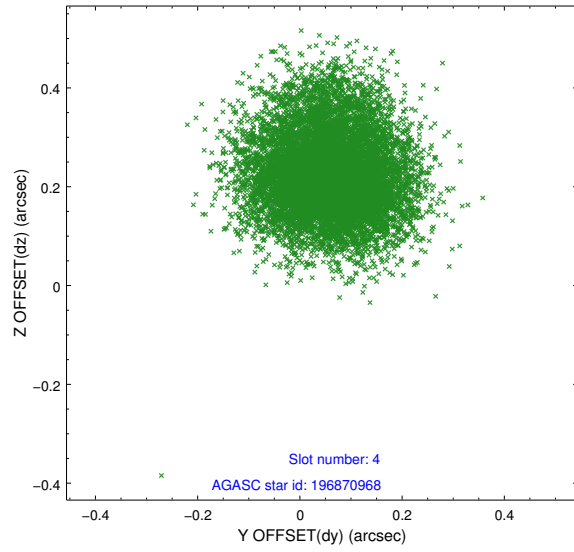
slot	status	id	mag	n_pts	med_dy	med_dz	dr1	dr2	ra	dec	mean_y	mean_z
0	FID	ACIS-I-1	7.01	4564	0.029	0.018	0.011	0.017	0.000000	0.000000	925.98	-837.66
1	FID	ACIS-I-5	7.00	4563	-0.205	0.042	0.014	0.027	0.000000	0.000000	-1822.28	1059.70
2	FID	ACIS-I-6	7.01	4564	0.083	0.009	0.013	0.022	0.000000	0.000000	391.30	1704.44
3	GUIDE	196489968	8.01	9127	-0.193	-0.230	0.073	0.118	237.504150	19.692523	1270.13	2002.73
4	GUIDE	196870968	9.78	9121	0.058	0.221	0.122	0.194	238.606443	20.079805	-1758.60	-583.83
5	GUIDE	196873248	8.72	9122	0.160	-0.003	0.070	0.113	238.212487	20.381335	-135.28	-1145.29
6	GUIDE	196876760	9.84	9114	-0.056	0.104	0.162	0.249	238.130265	20.742811	571.17	-2272.66
7	GUIDE	196480344	8.82	9118	0.033	-0.094	0.081	0.135	238.522484	19.410970	-2322.15	1773.88

2.4 Star Slots

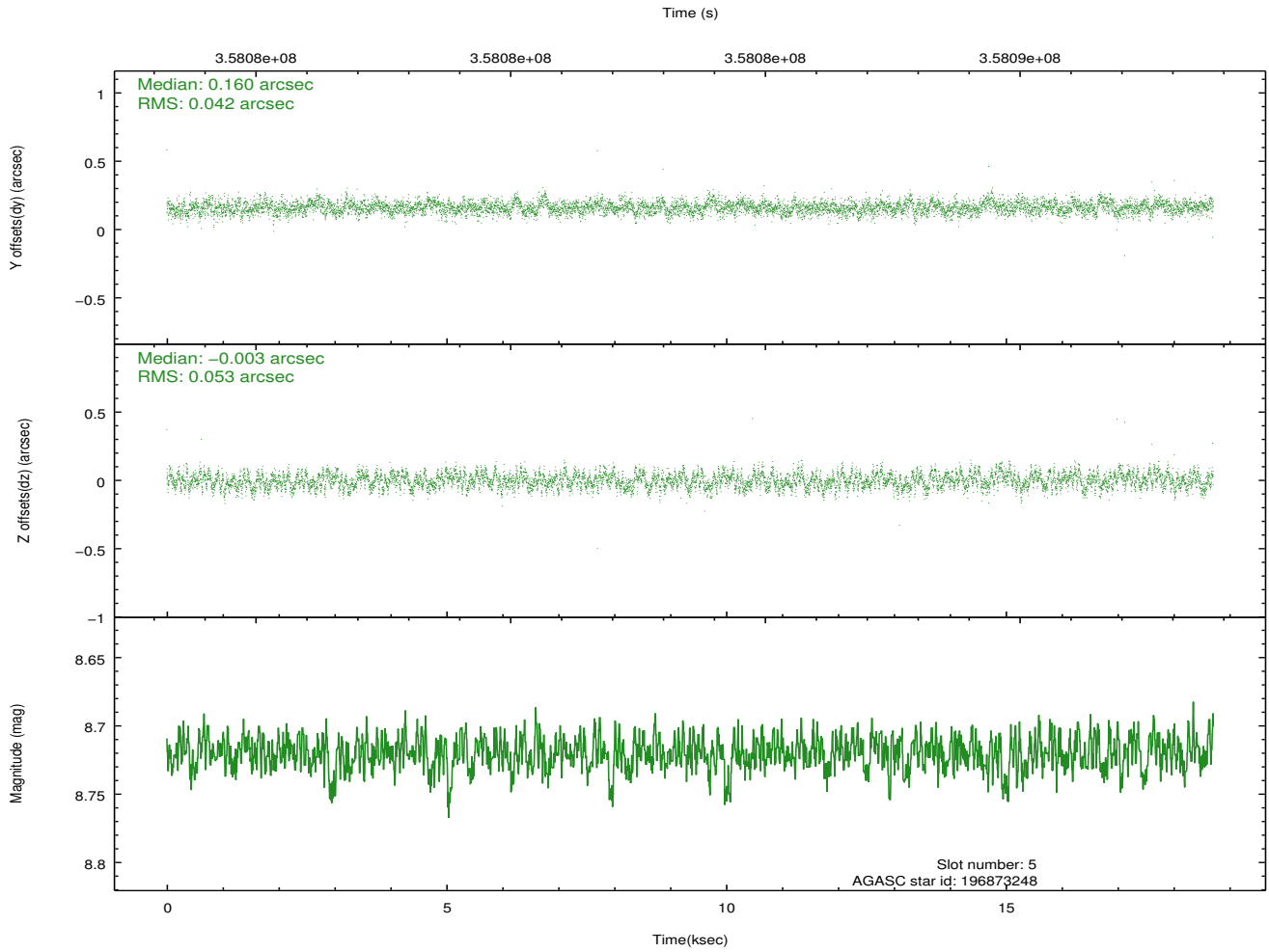
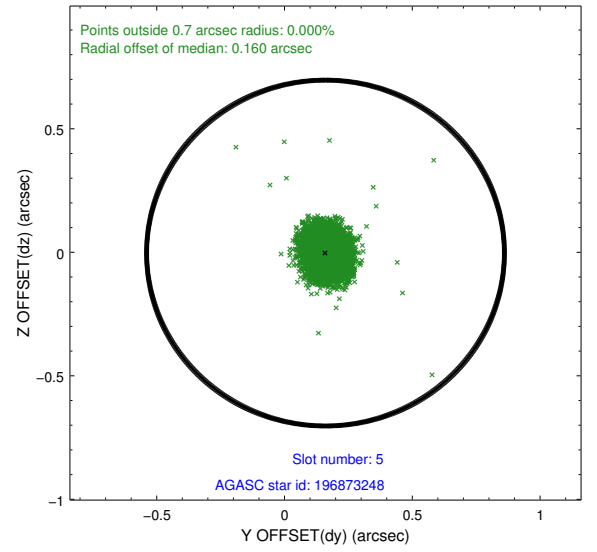
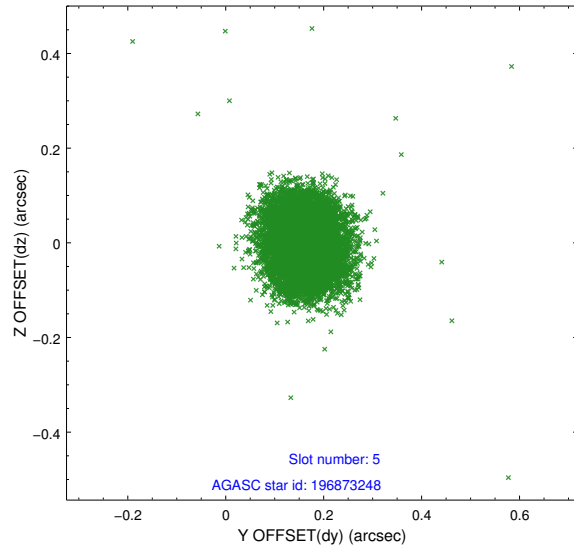
2.4.1 Slot 3



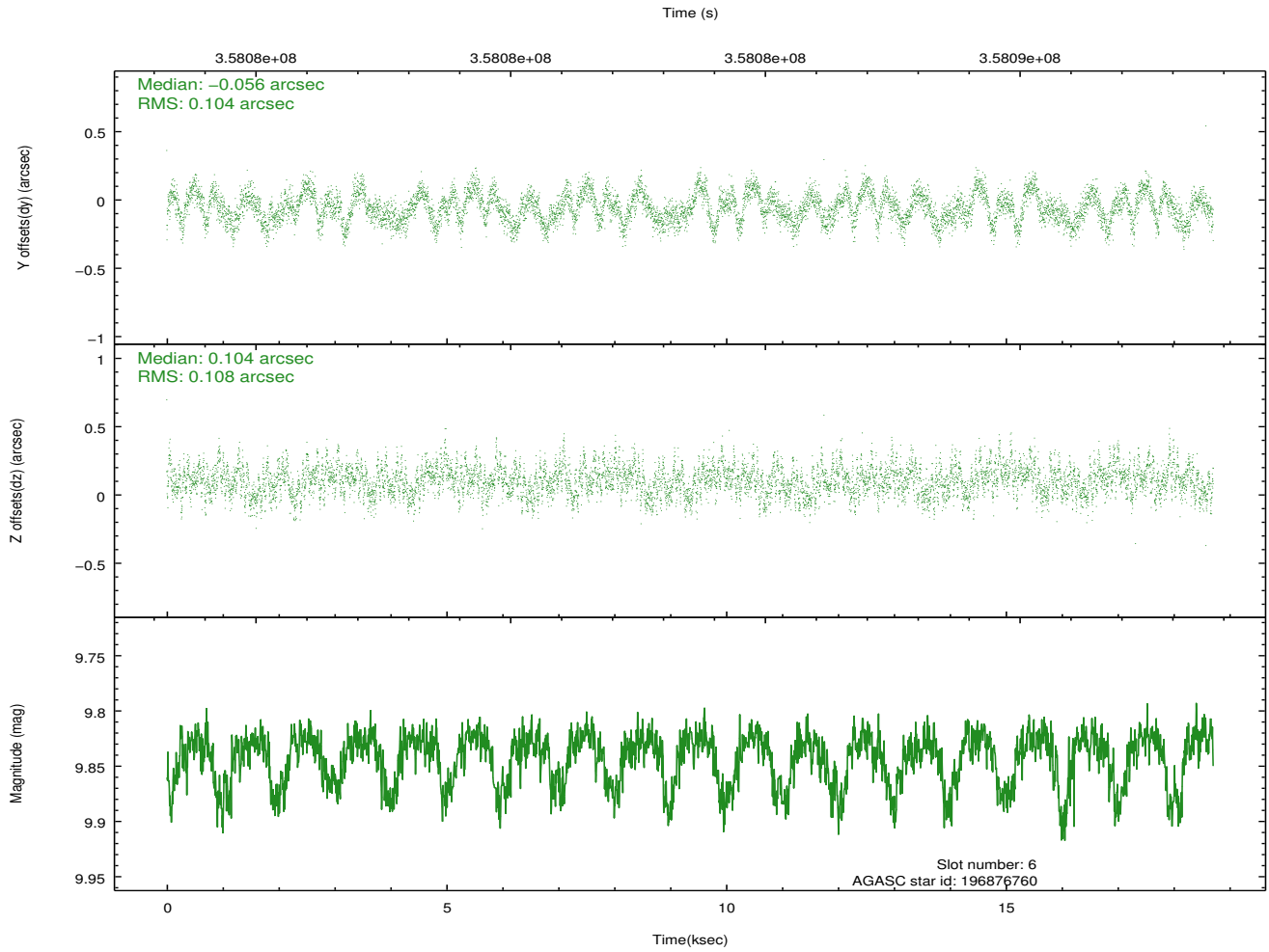
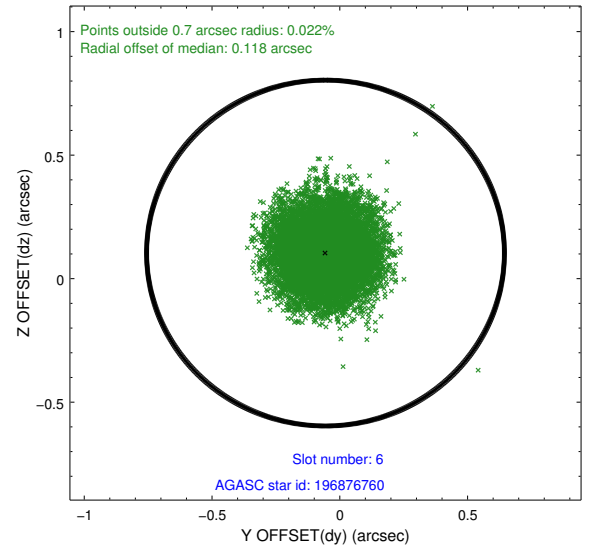
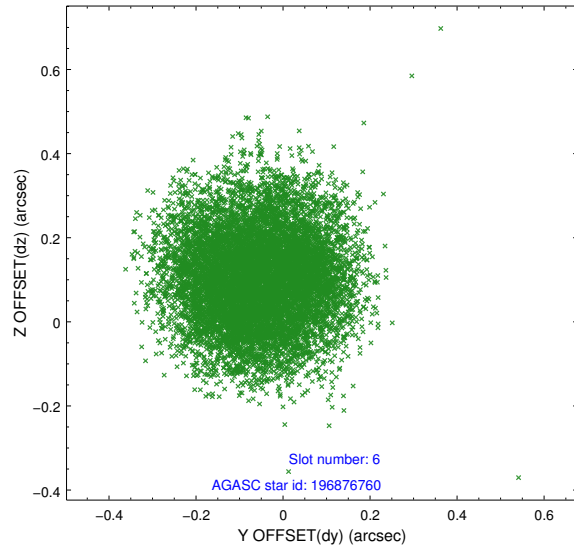
2.4.2 Slot 4



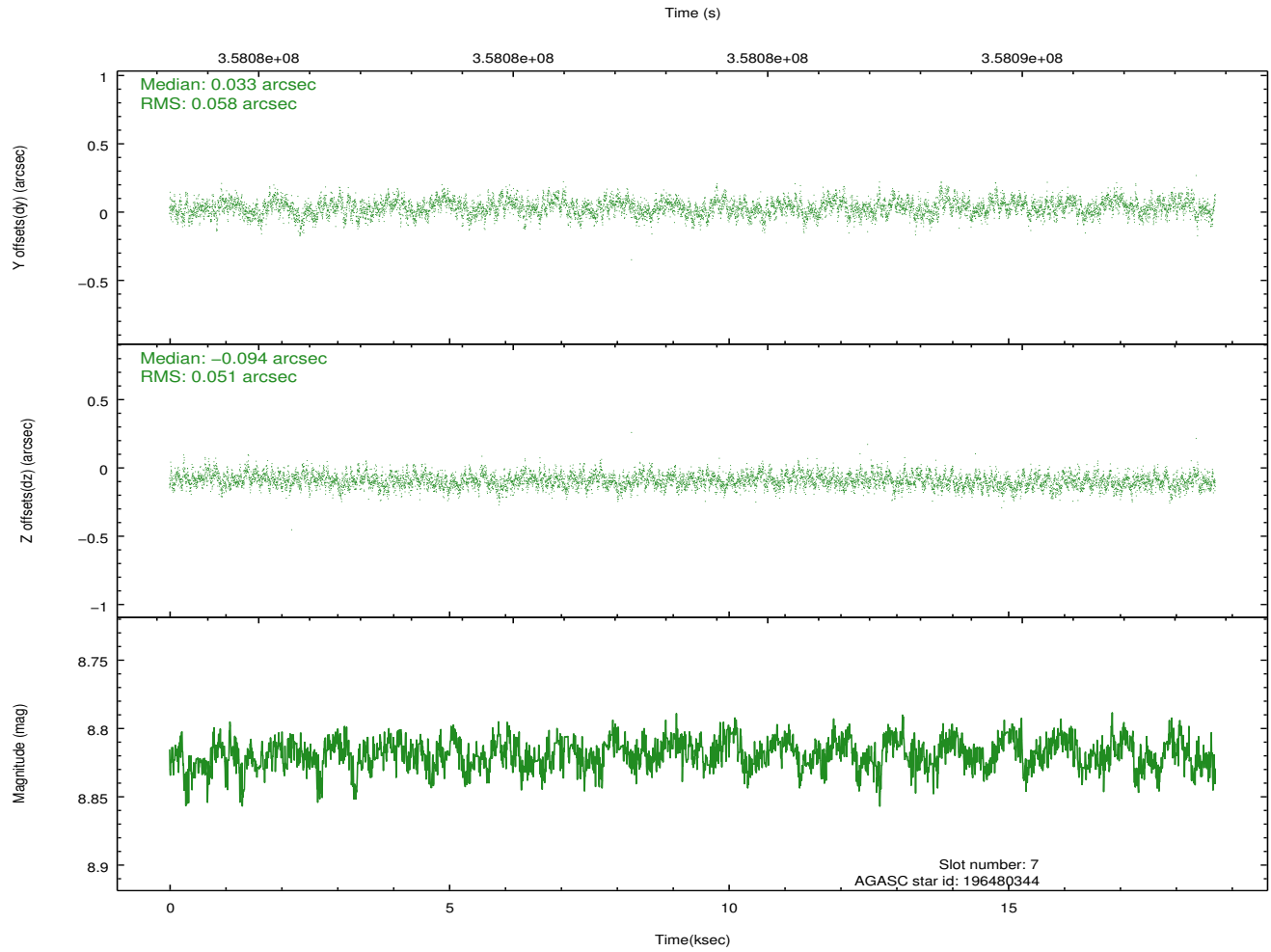
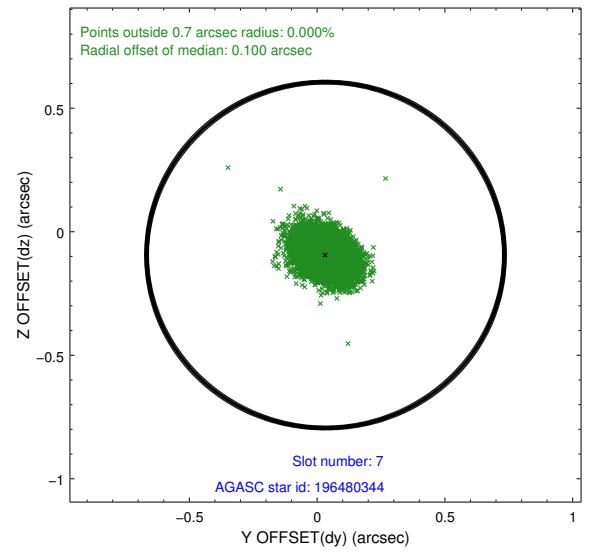
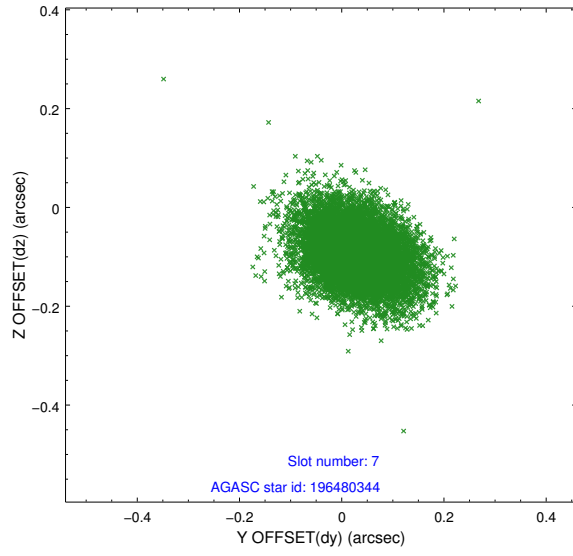
2.4.3 Slot 5



2.4.4 Slot 6

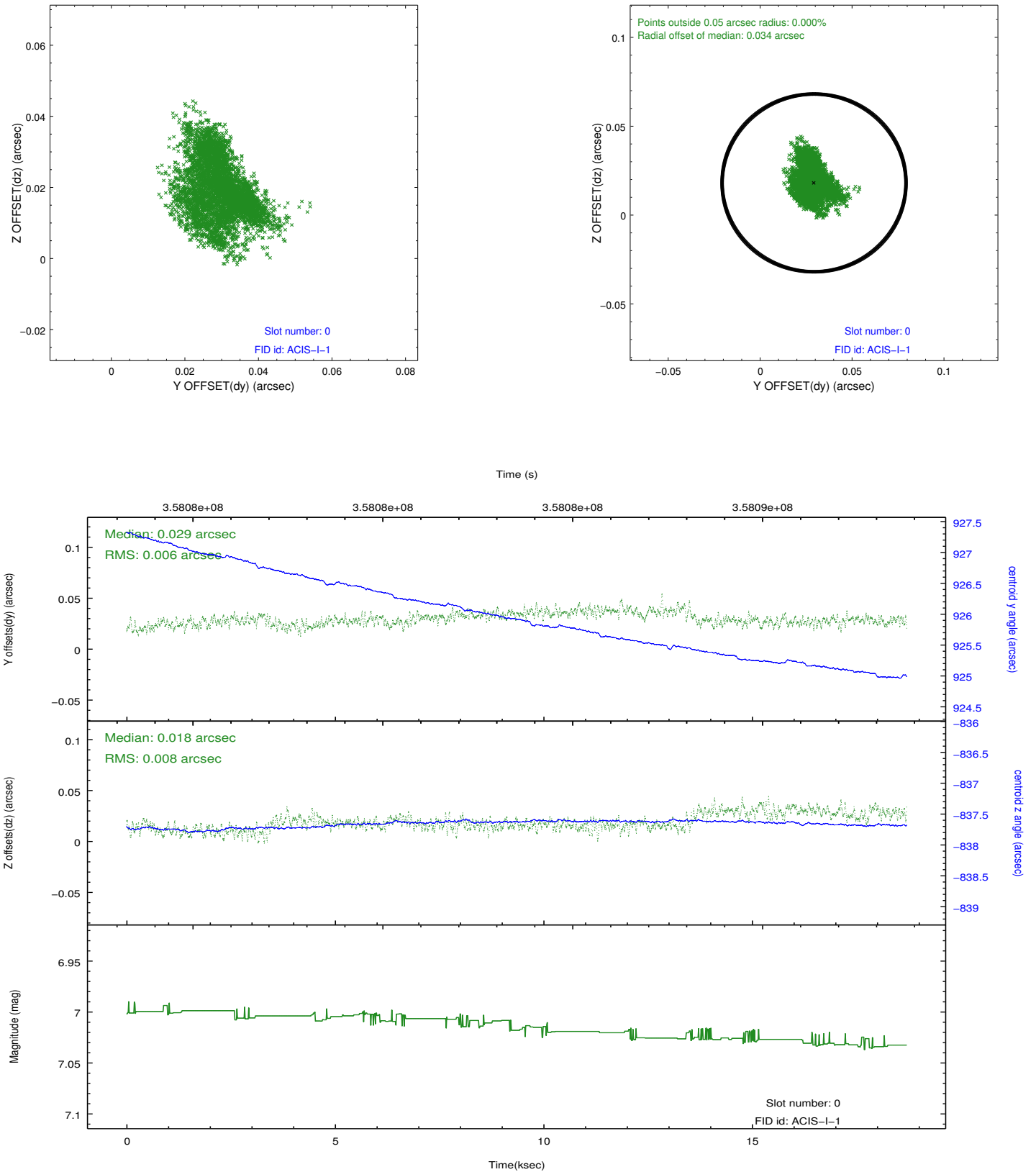


2.4.5 Slot 7

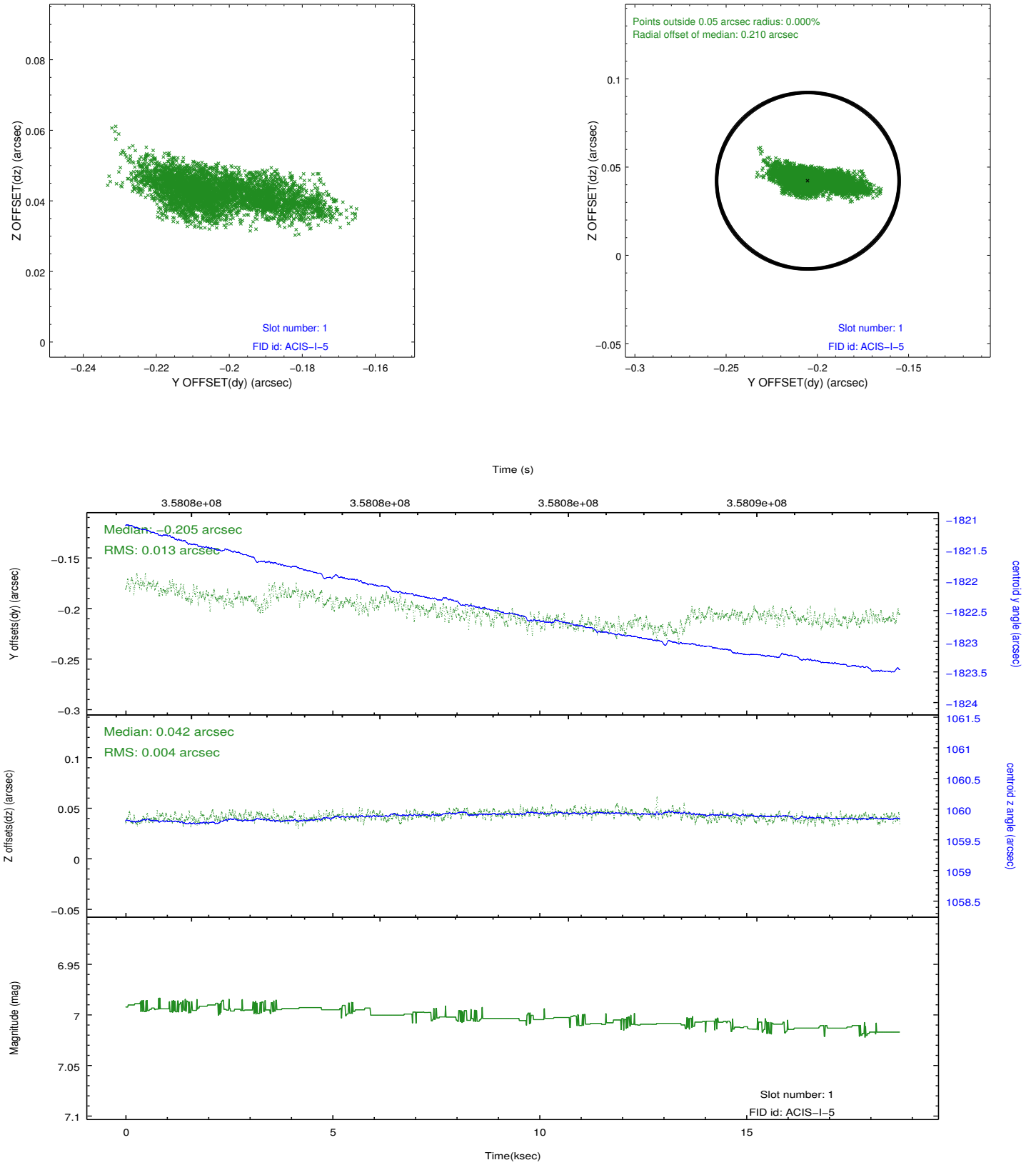


2.5 FID Slots

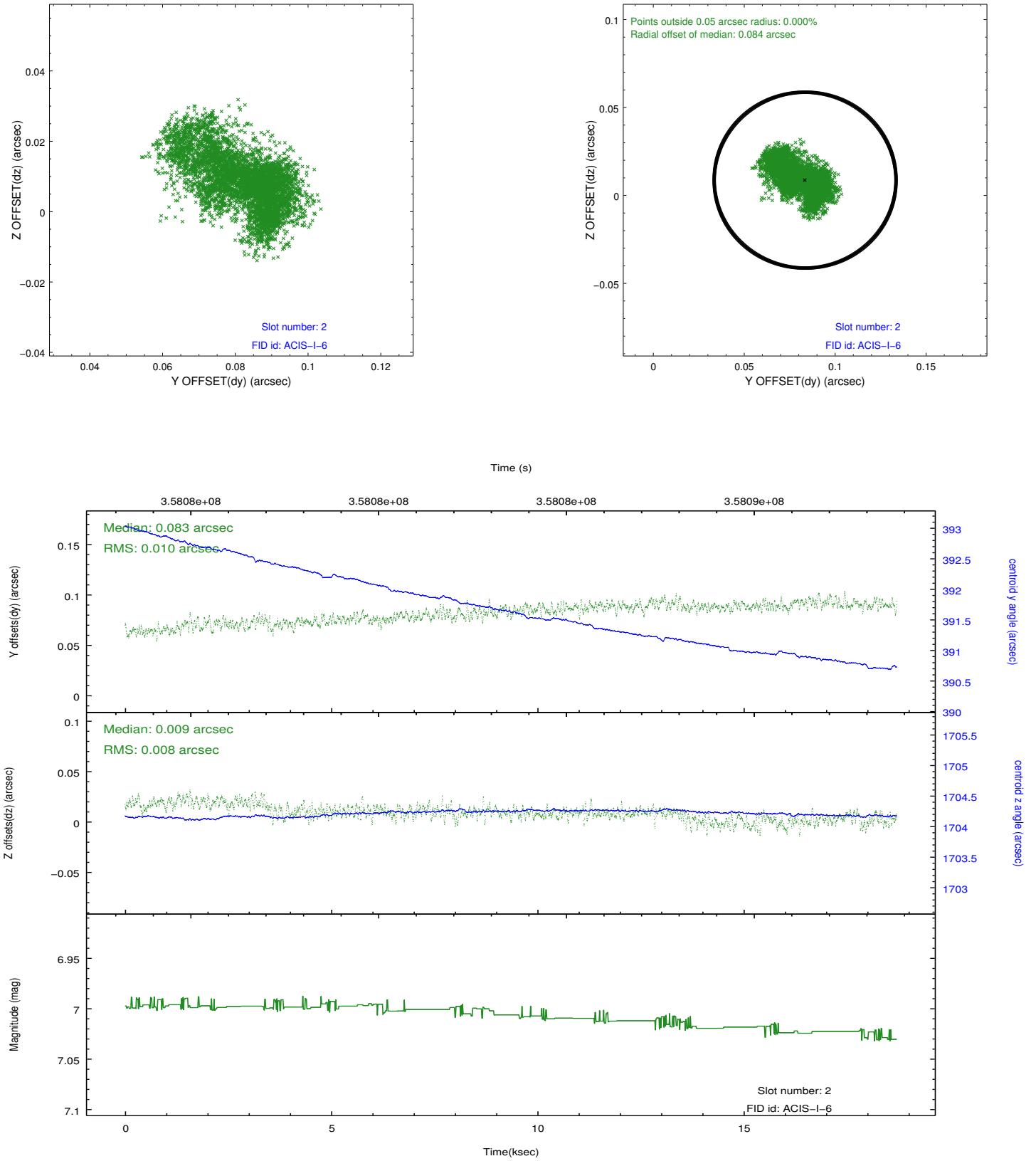
2.5.1 Slot 0



2.5.2 Slot 1



2.5.3 Slot 2



A Summary

A.1 Status

V&V Scientist	Beth Sundheim
V&V Date (YYYY-MM-DD)	2012.06.08
V&V Edition	1
V&V Disposition and Status	OK
V&V Charge Time	18.5411001

A.2 Comments

Joint proposal with HST.