

V&V Reference Report

L2 ASCDS Version : 8.4.4

Observation 10232 - L2 Version 2
Chandra X-Ray Center

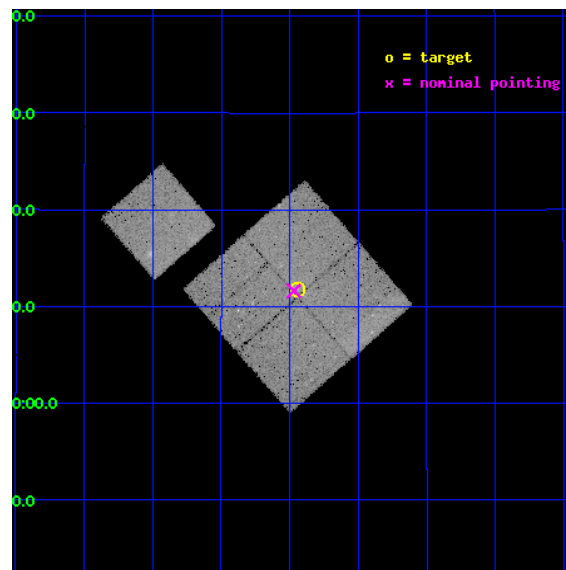
L2 Processing Date : May 24 2012

Contents

1	Front	2
2	OBI	3
2.1	OBI	3
2.1.1	Images	3
2.1.2	Bias	3
2.1.3	Parameters	4
2.1.4	Events	4
2.2	Compared Parameters	5
2.3	Aspect	6
2.4	Star Slots	9
2.4.1	Slot 3	9
2.4.2	Slot 4	10
2.4.3	Slot 5	11
2.4.4	Slot 6	12
2.4.5	Slot 7	13
2.5	FID Slots	14
2.5.1	Slot 0	14
2.5.2	Slot 1	15
2.5.3	Slot 2	16
A	Summary	17
A.1	Status	17
A.2	Comments	17

1 Front

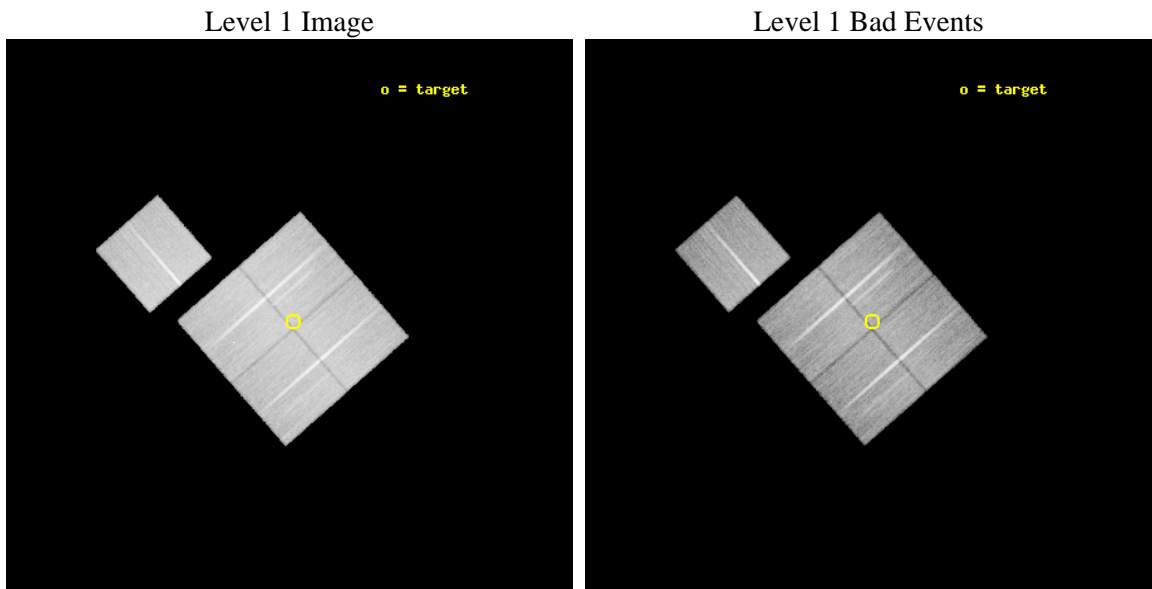
seq_num	701775	Sequence number
obs_id	10232	Observation id
title	The multi-faceted X-ray activity of low-redshift active galaxies	P
observer	Prof Mark Birkinshaw	Principal investigator
object	3C 386	Source name
dtcycle	0	
cycle	P	events from which exps? Prim/Second/Both
ra_targ	279.609583	Observer's specified target RA [deg]
dec_targ	17.197139	Observer's specified target Dec [deg]
ra_nom	279.6173086168	Nominal RA [deg]
dec_nom	17.193867447444	Nominal Dec [deg]
roll_nom	318.76724513676	Nominal Roll [deg]
revision	2	Processing version of data
ontime	29673.200228214	Sum of GTIs [s]
livetime	29285.49802214	Livetime [s]
ontime0	29666.918307602	Sum of GTIs [s]
ontime1	29663.777317286	Sum of GTIs [s]
ontime2	29673.200228214	Sum of GTIs [s]
ontime3	29673.200228214	Sum of GTIs [s]
ontime6	29663.777347326	Sum of GTIs [s]
l2events	107568	Number of level 2 events



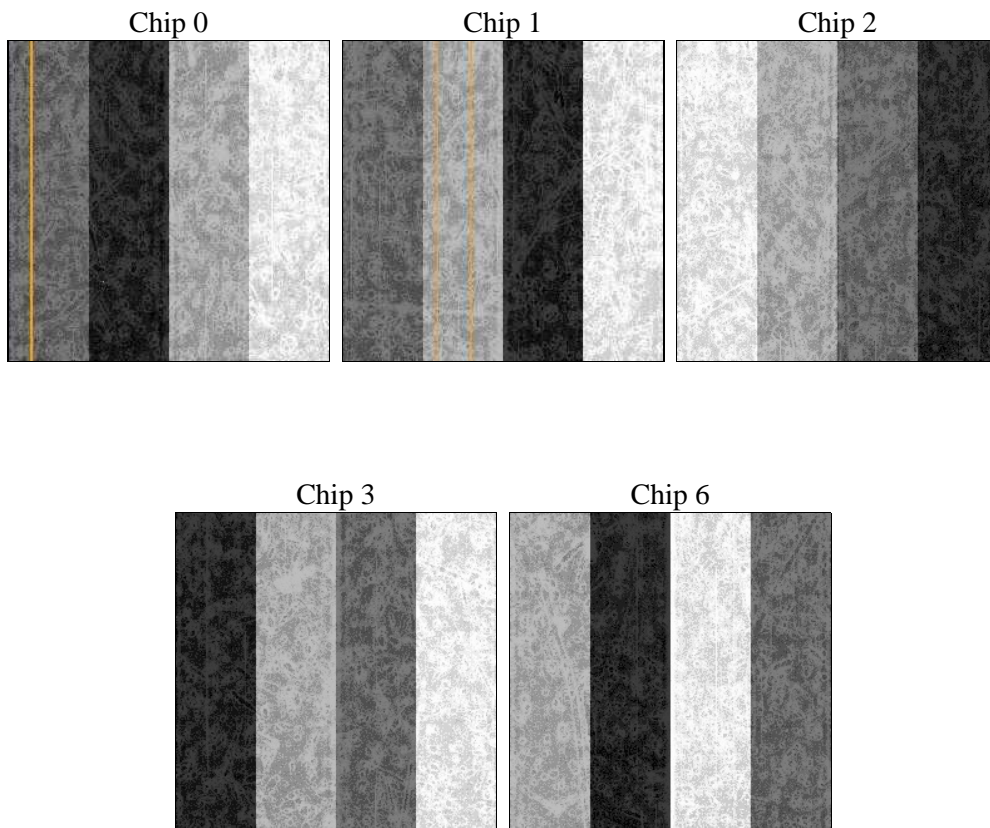
2 OBI

2.1 OBI

2.1.1 Images



2.1.2 Bias



2.1.3 Parameters

obi_num	0	Obi number	sched_exp_time	29500.000000	[s] Scheduled observation exposure time
ascdsver	8.4.4	Processing system revision	ontime	29673.200228214	Sum of GTIs [s]
caldsver	4.4.9	 	ontime0	29666.918307602	Sum of GTIs [s]
date	2012-05-24T17:55:21	Date and time of file creation	ontime1	29663.777317286	Sum of GTIs [s]
revision	2	Processing version of data	ontime2	29673.200228214	Sum of GTIs [s]
			ontime3	29673.200228214	Sum of GTIs [s]
			ontime6	29663.777347326	Sum of GTIs [s]
			l1events	1247873	Number of level 1 events

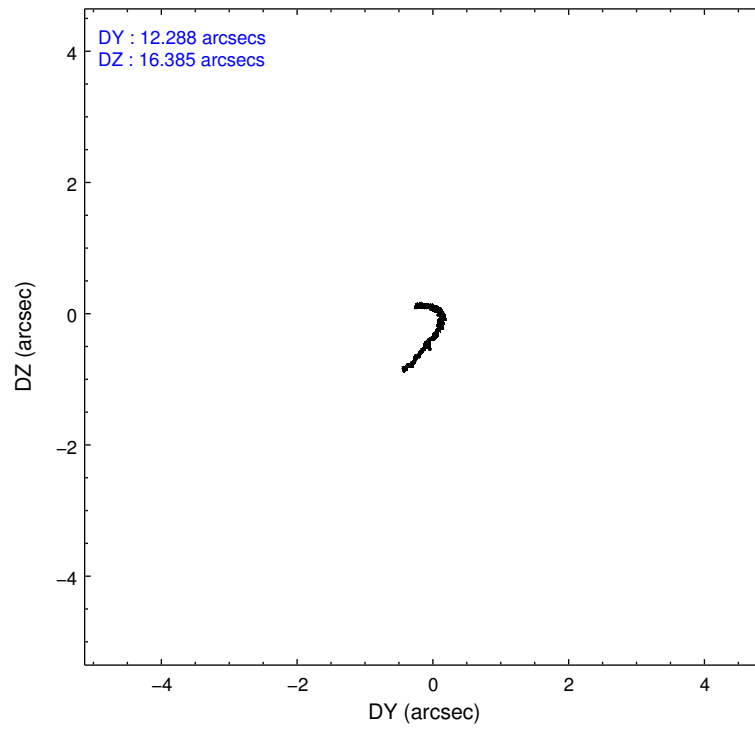
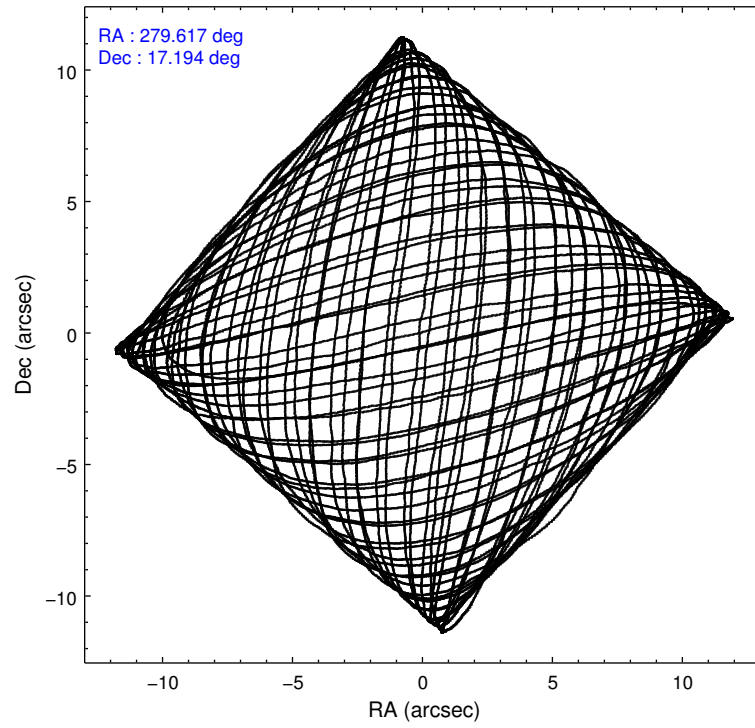
2.1.4 Events

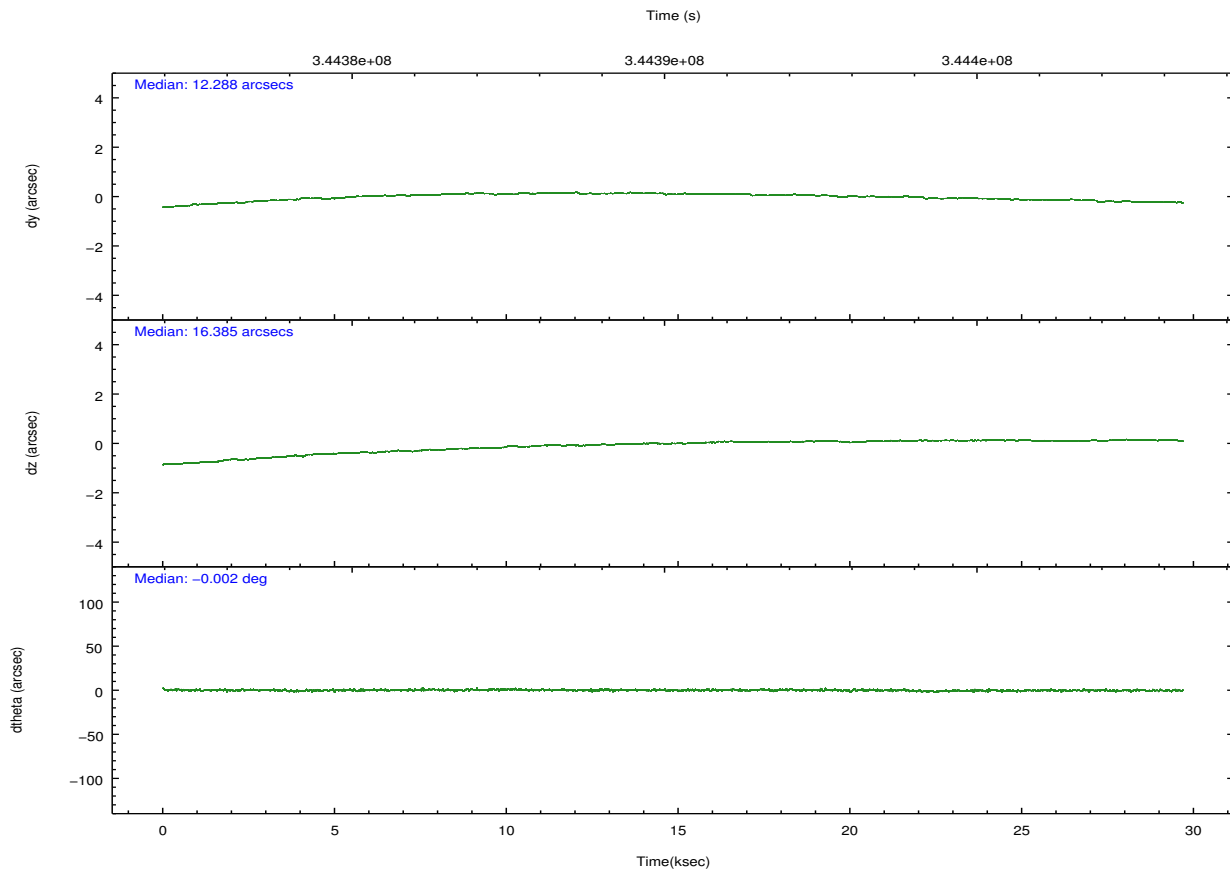
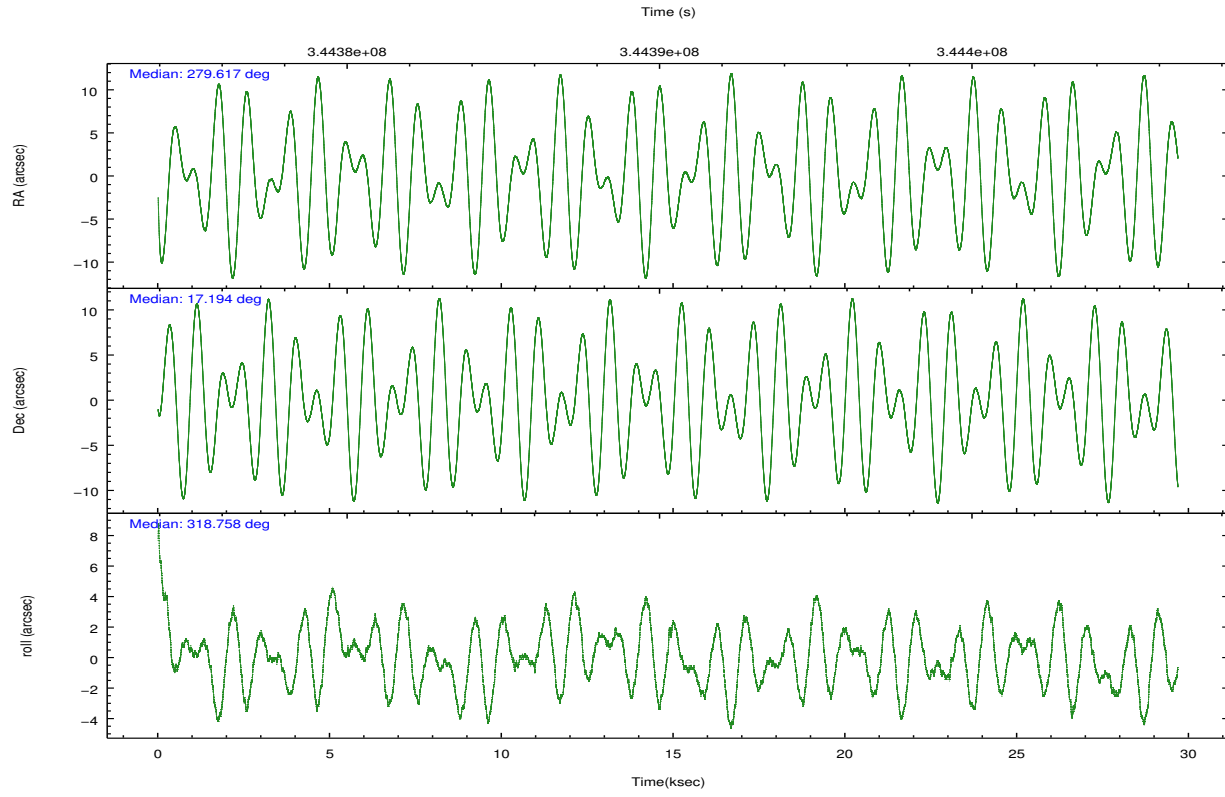
	ccd 0	ccd 1	ccd 2	ccd 3	ccd 6		ccd 0	ccd 1	ccd 2	ccd 3	ccd 6
level 1 events	235428	241121	263676	254484	253164	grade 0 events	8992	10478	9614	8744	9690
rejected events	210089	212609	238145	230443	226781		3%	4%	3%	3%	3%
rejected %	89%	88%	90%	90%	89%	grade 1 events	136	142	165	144	135
							0%	0%	0%	0%	0%
						grade 2 events	6236	6483	6253	5317	5720
							2%	2%	2%	2%	2%
						grade 3 events	2901	3083	2594	2739	2900
							1%	1%	0%	1%	1%
						grade 4 events	2569	3008	2736	2685	2750
							1%	1%	1%	1%	1%
						grade 5 events	8927	9966	8599	10389	10091
							3%	4%	3%	4%	3%
						grade 6 events	4987	5854	4666	4885	5679
							2%	2%	1%	1%	2%
						grade 7 events	200680	202107	229049	219581	216199
							85%	83%	86%	86%	85%

2.2 Compared Parameters

Parameter	Planned	Actual	Parameter	Planned	Actual
Instrument	ACIS	ACIS	Obspar format version number	7	7
Detector	ACIS-01236	ACIS-01236	Obspar file type	PREDICTED	ACTUAL
Grating	NONE	NONE	Obspar update status	NONE	UPDATED
Data mode	VFAINT	VFAINT	CCD I0 on	Y	Y
Observation mode	POINTING	POINTING	CCD I1 on	Y	Y
[deg] Pointing RA	279.589057	279.617308616804	CCD I2 on	Y	Y
[deg] Pointing Dec	17.199103	17.19386744744402	CCD I3 on	Y	Y
[deg] Pointing Roll	318.566908	318.7672451367626	CCD S0 on	N	N
[mm] SIM focus pos	-0.782348	-0.7809083437167272	CCD S1 on	N	N
[mm] SIM defocus	0	0.001439871863259334	CCD S2 on	O1	Y
[mm] SIM translation stage pos	-233.592463	-233.5874344608287	CCD S3 on	N	N
[mm] SIM translation stage offset	0	-0.005018542100998502	CCD S4 on	N	N
[s] Observation start time (MET)	344375619.184000	344374430.1602	CCD S5 on	N	N
Observation start date	2008-11-29T19:52:34	2008-11-29T19:33:50	Number of optional ACIS chips dropped	0	0
[s] Observation end time (MET)	344405119.184000	344406059.09926	On-chip summing requested	N	N
Observation end date	2008-11-30T04:04:14	2008-11-30T04:20:59	Subarray requested	NONE	NONE
Read mode	TIMED	TIMED	Alternating exposures requested	N	N
			[s] Primary exposure time	0.000000	3.1

2.3 Aspect



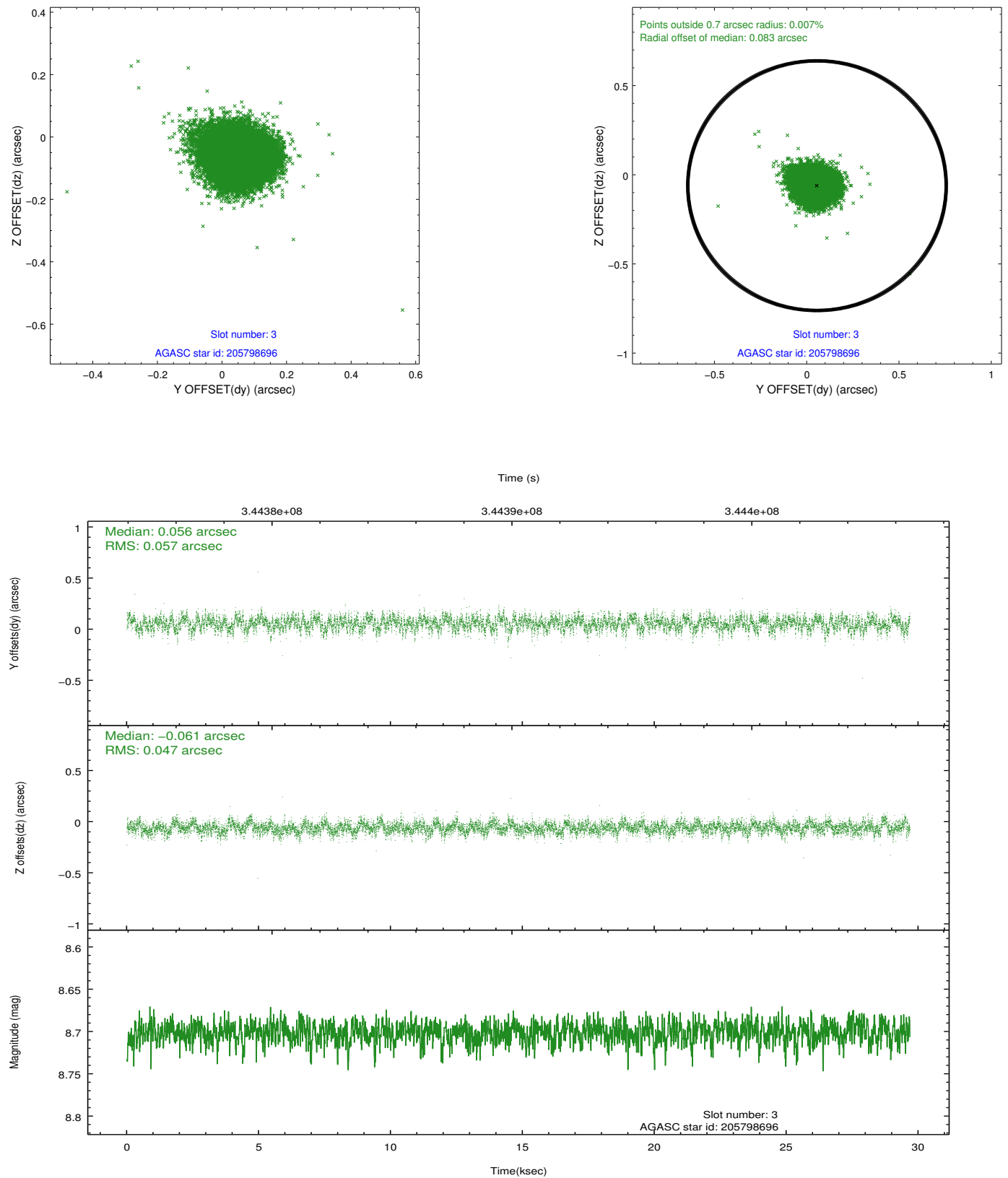


Slot Statistics

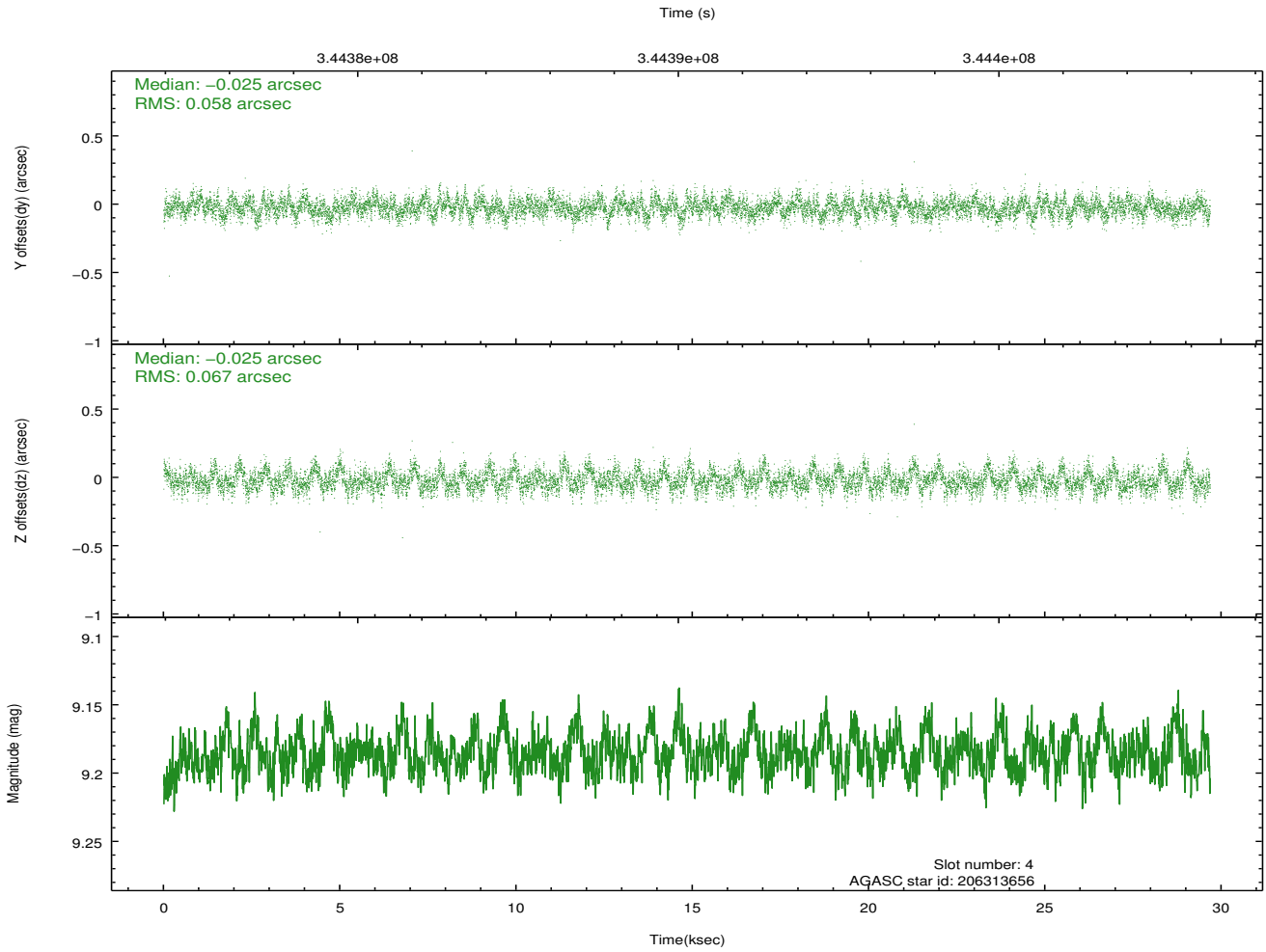
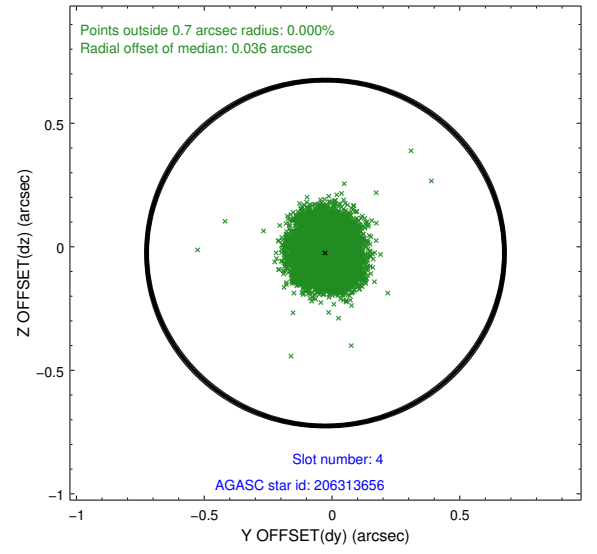
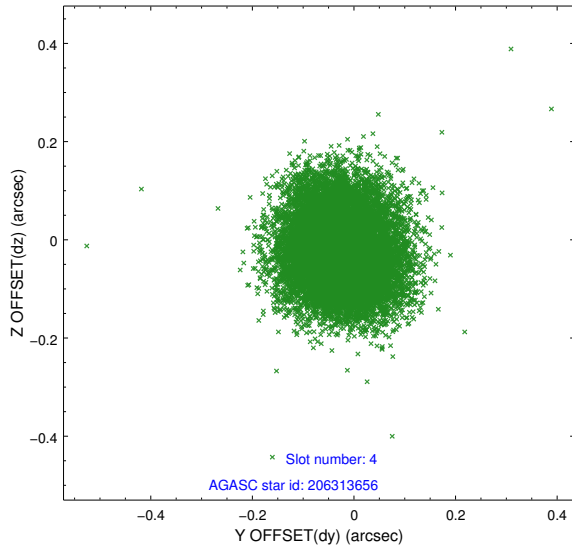
slot	status	id	mag	n_pts	med_dy	med_dz	dr1	dr2	ra	dec	mean_y	mean_z
0	FID	ACIS-I-2	6.92	7240	-0.073	-0.075	0.013	0.022	0.000000	0.000000	-766.97	-846.35
1	FID	ACIS-I-4	6.91	7239	0.133	0.066	0.009	0.018	0.000000	0.000000	2147.25	1059.94
2	FID	ACIS-I-5	6.97	7240	-0.161	0.077	0.013	0.021	0.000000	0.000000	-1820.79	1057.87
3	GUIDE	205798696	8.70	14473	0.056	-0.061	0.078	0.126	279.545034	16.513600	1520.06	-1950.13
4	GUIDE	206313656	9.19	14471	-0.025	-0.025	0.094	0.153	279.948052	17.306856	667.96	1108.17
5	GUIDE	206315712	8.60	14475	-0.005	0.026	0.070	0.112	278.988959	17.174030	-1489.18	-1431.05
6	GUIDE	206322608	7.72	14479	-0.032	-0.002	0.050	0.081	279.672132	17.881686	-1412.86	2030.66
7	GUIDE	206327040	8.64	14464	0.008	0.060	0.097	0.159	278.924306	16.943847	-1110.02	-2200.40

2.4 Star Slots

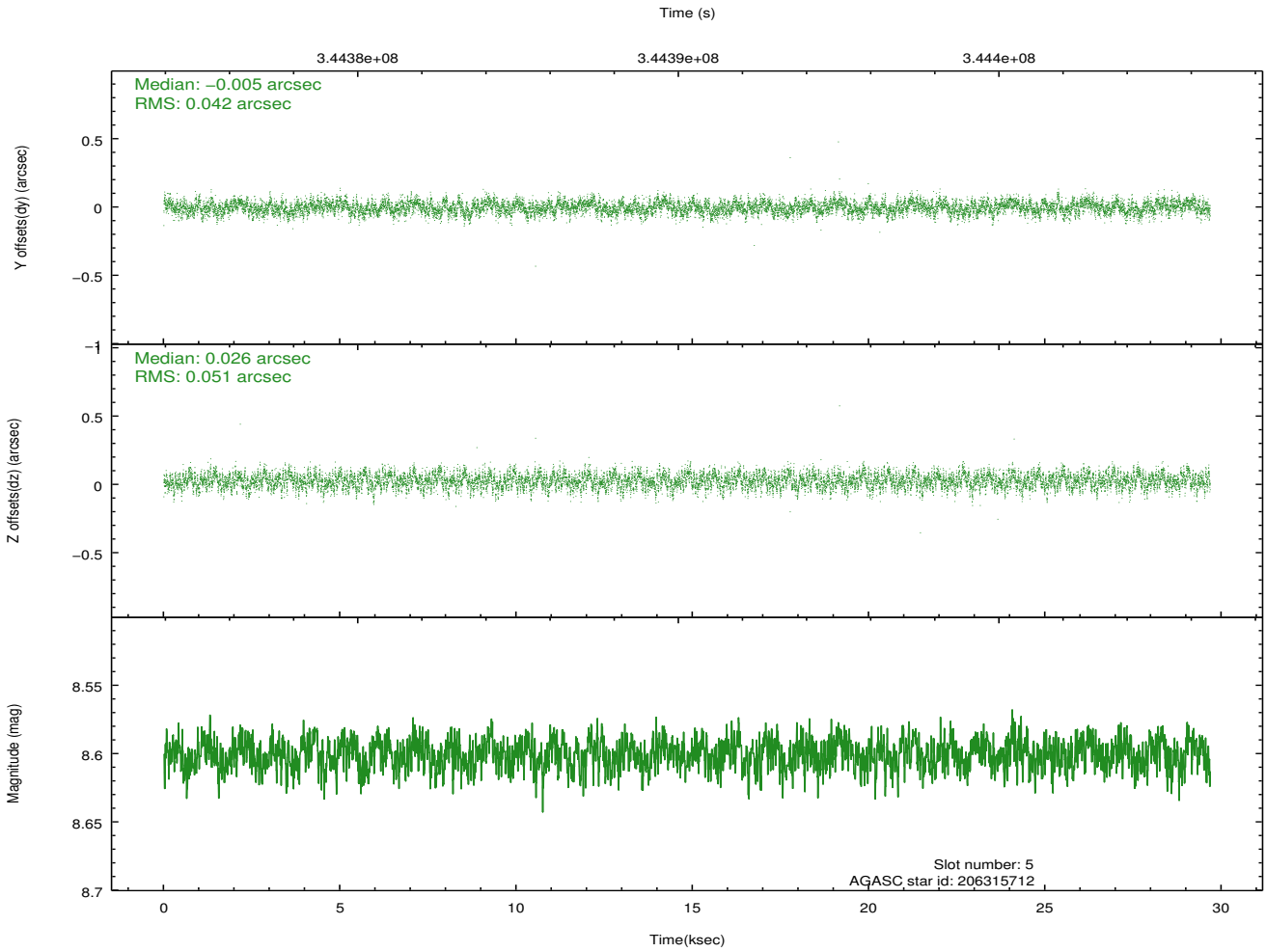
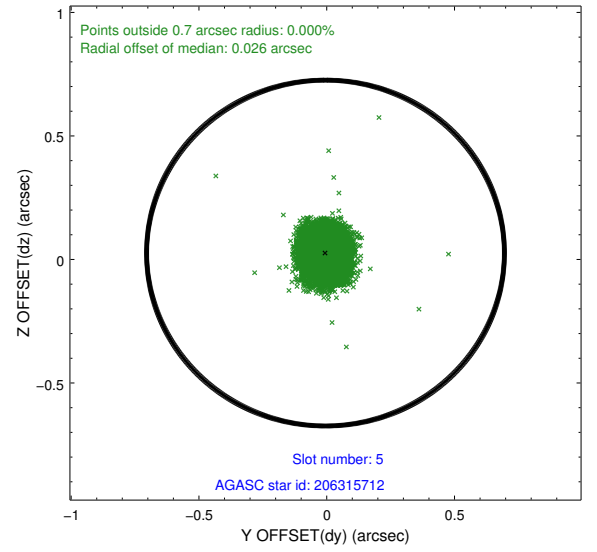
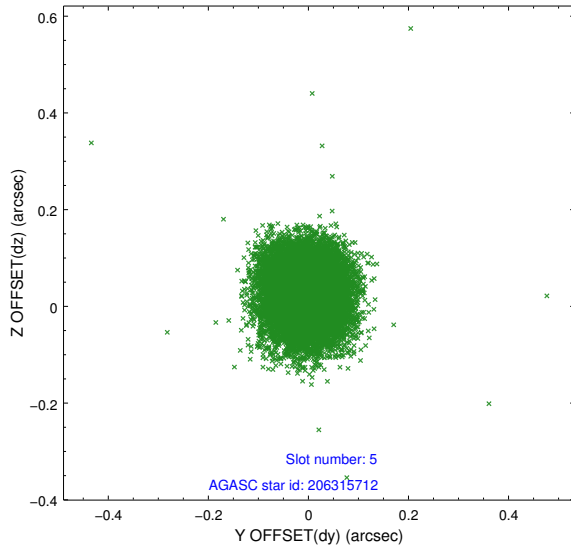
2.4.1 Slot 3



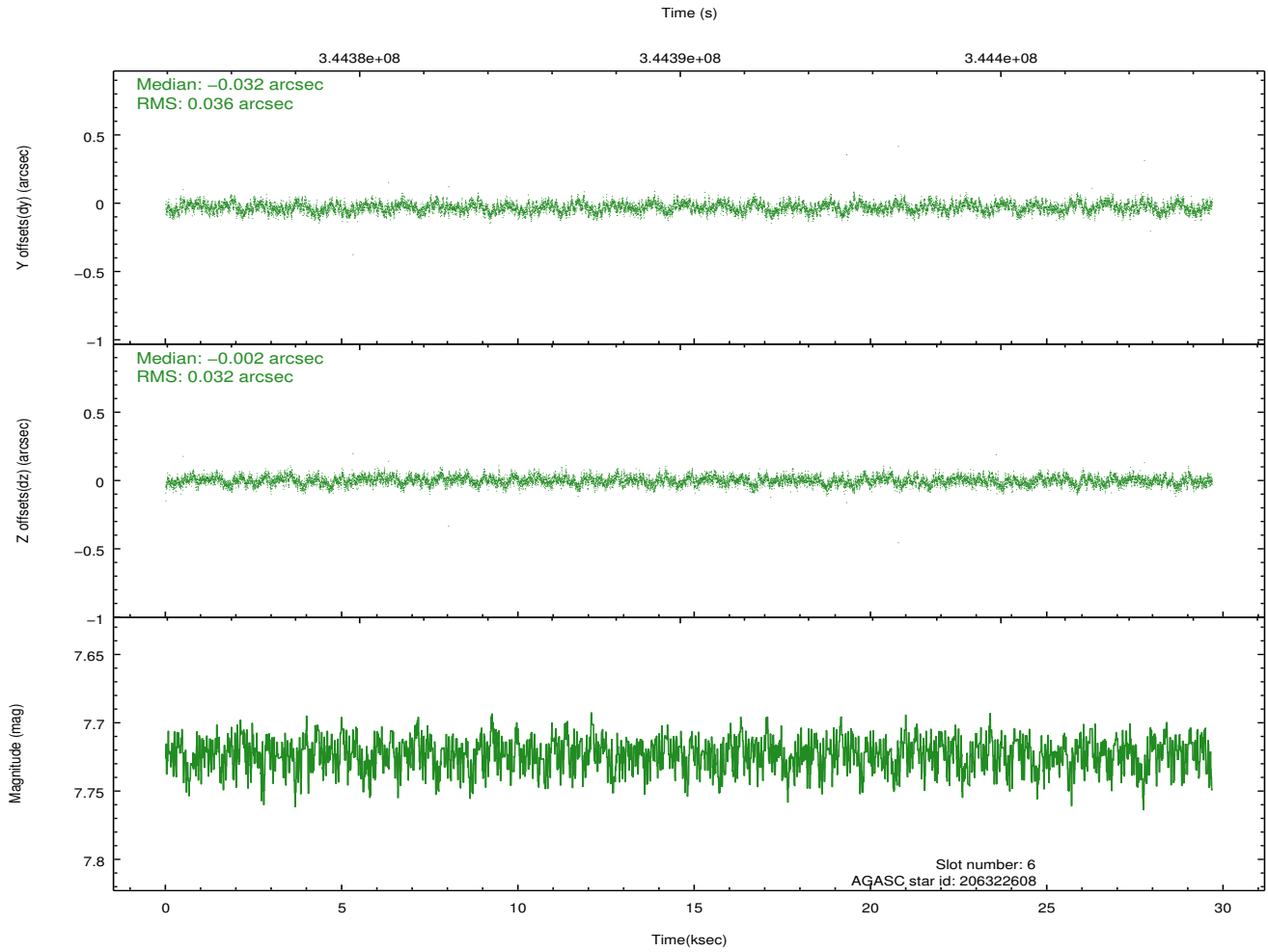
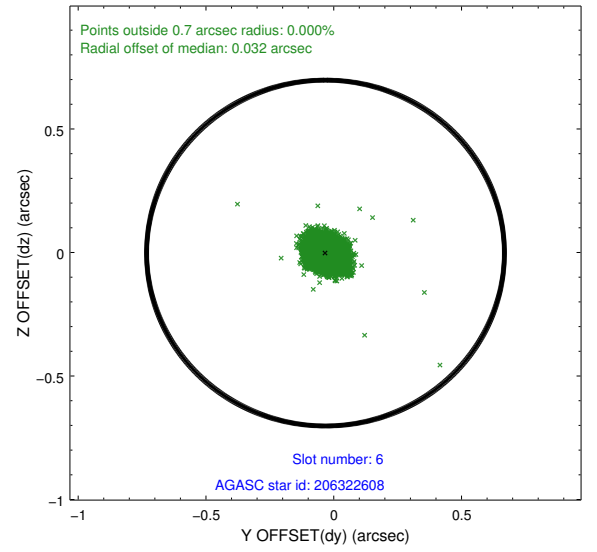
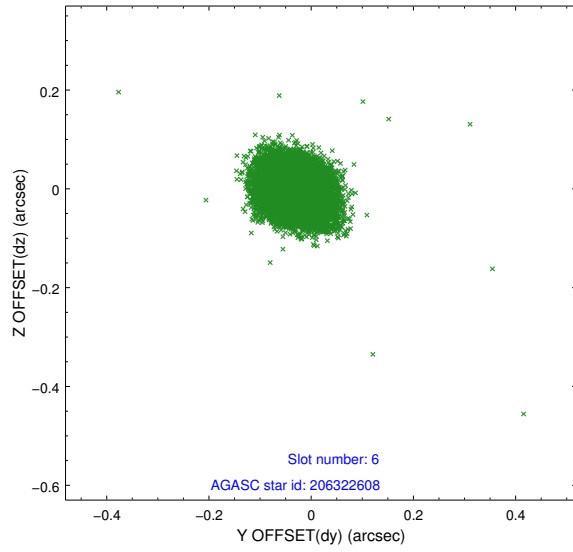
2.4.2 Slot 4



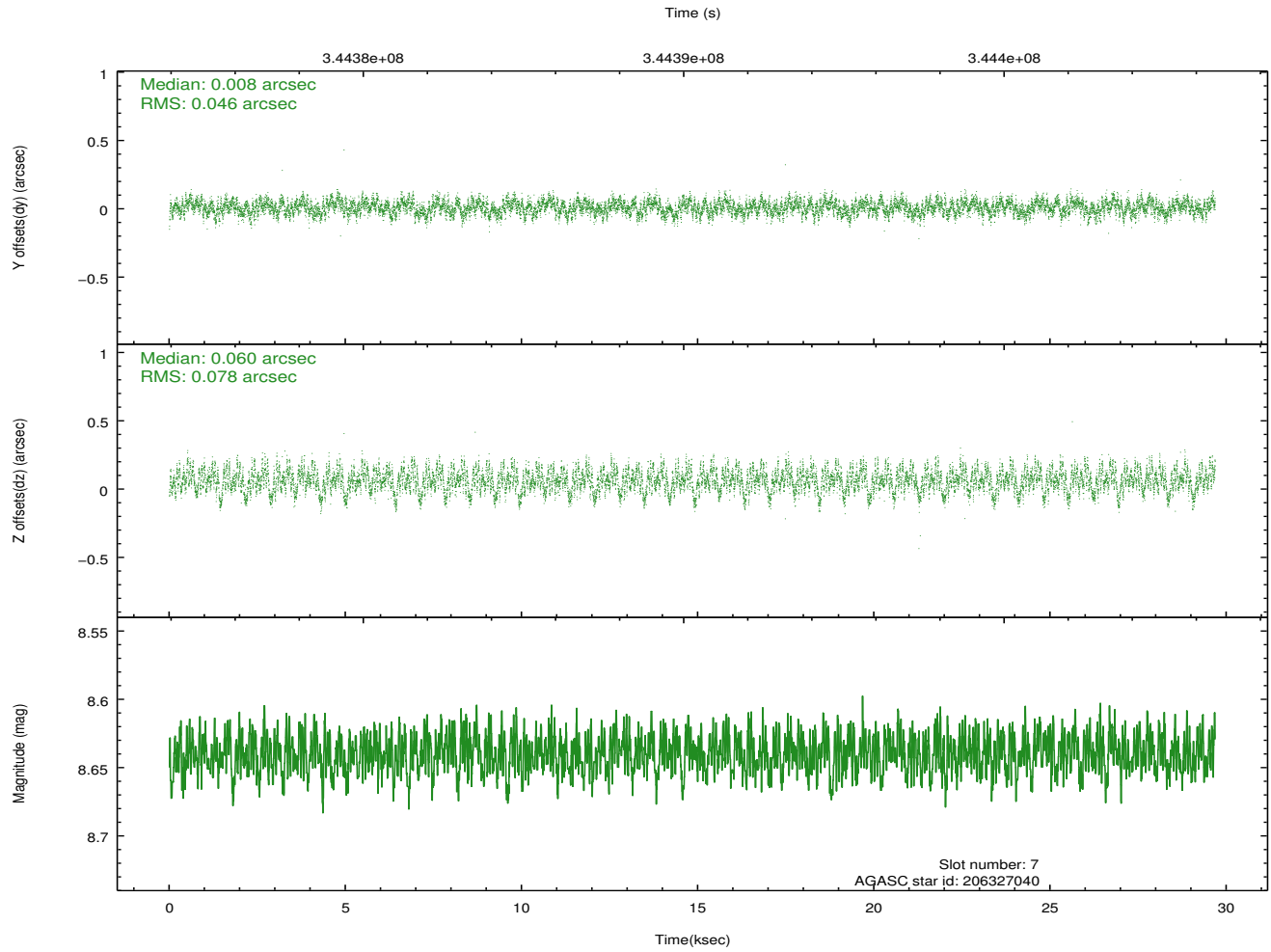
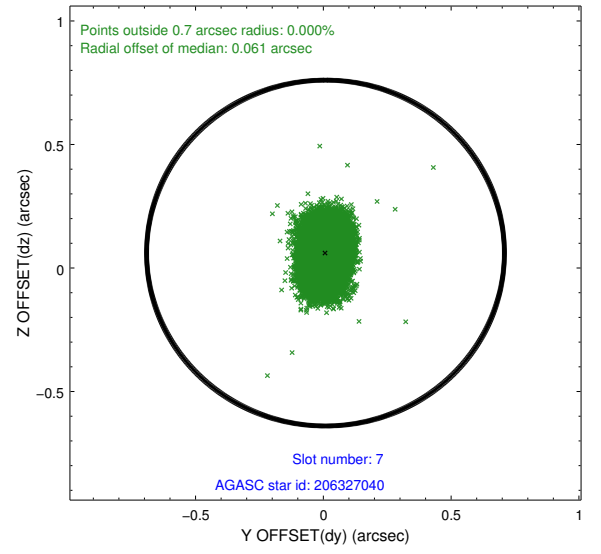
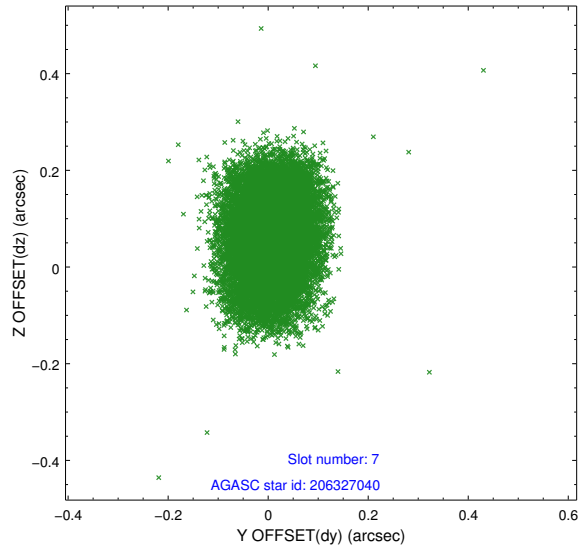
2.4.3 Slot 5



2.4.4 Slot 6

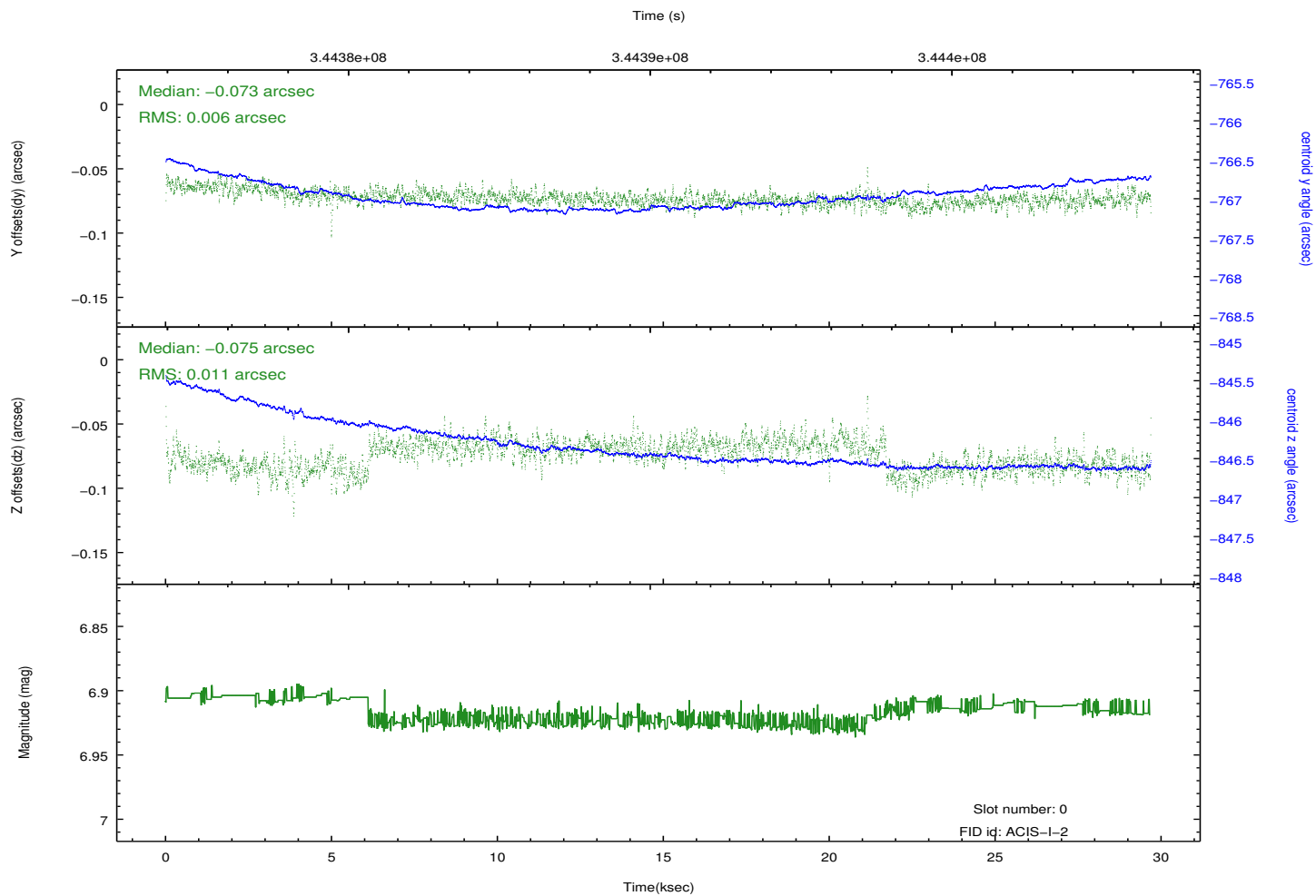
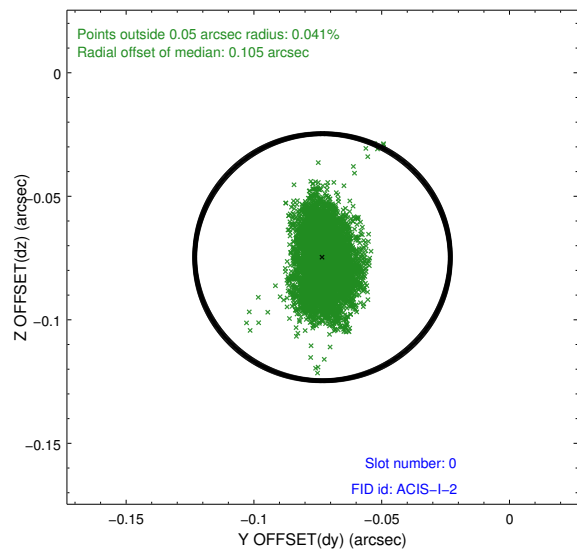
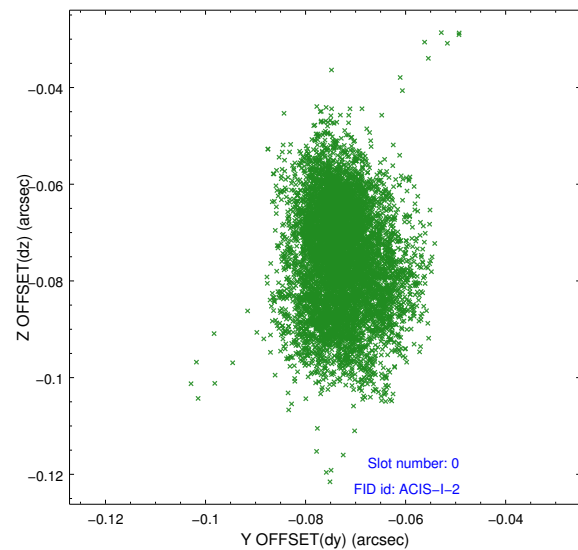


2.4.5 Slot 7

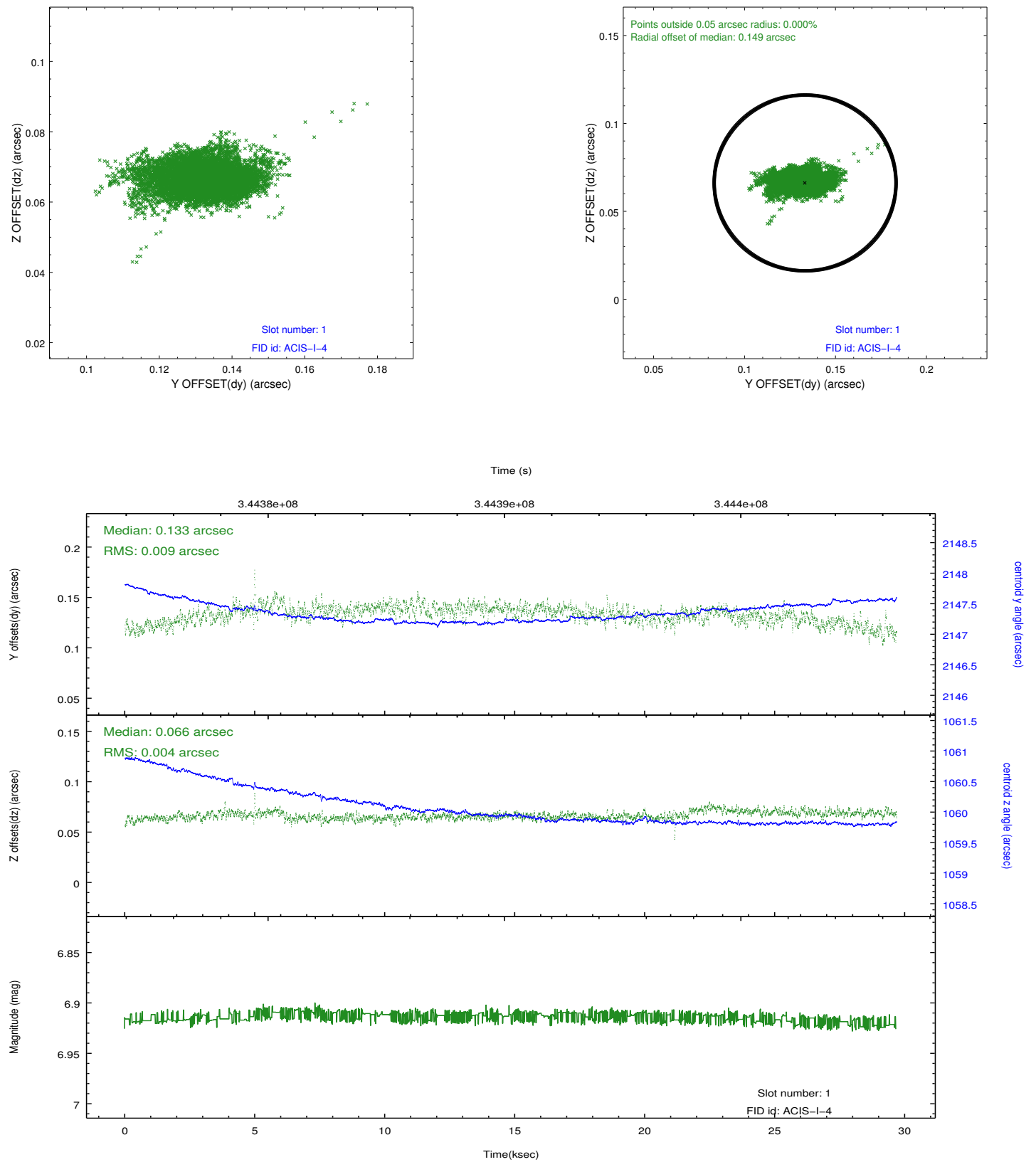


2.5 FID Slots

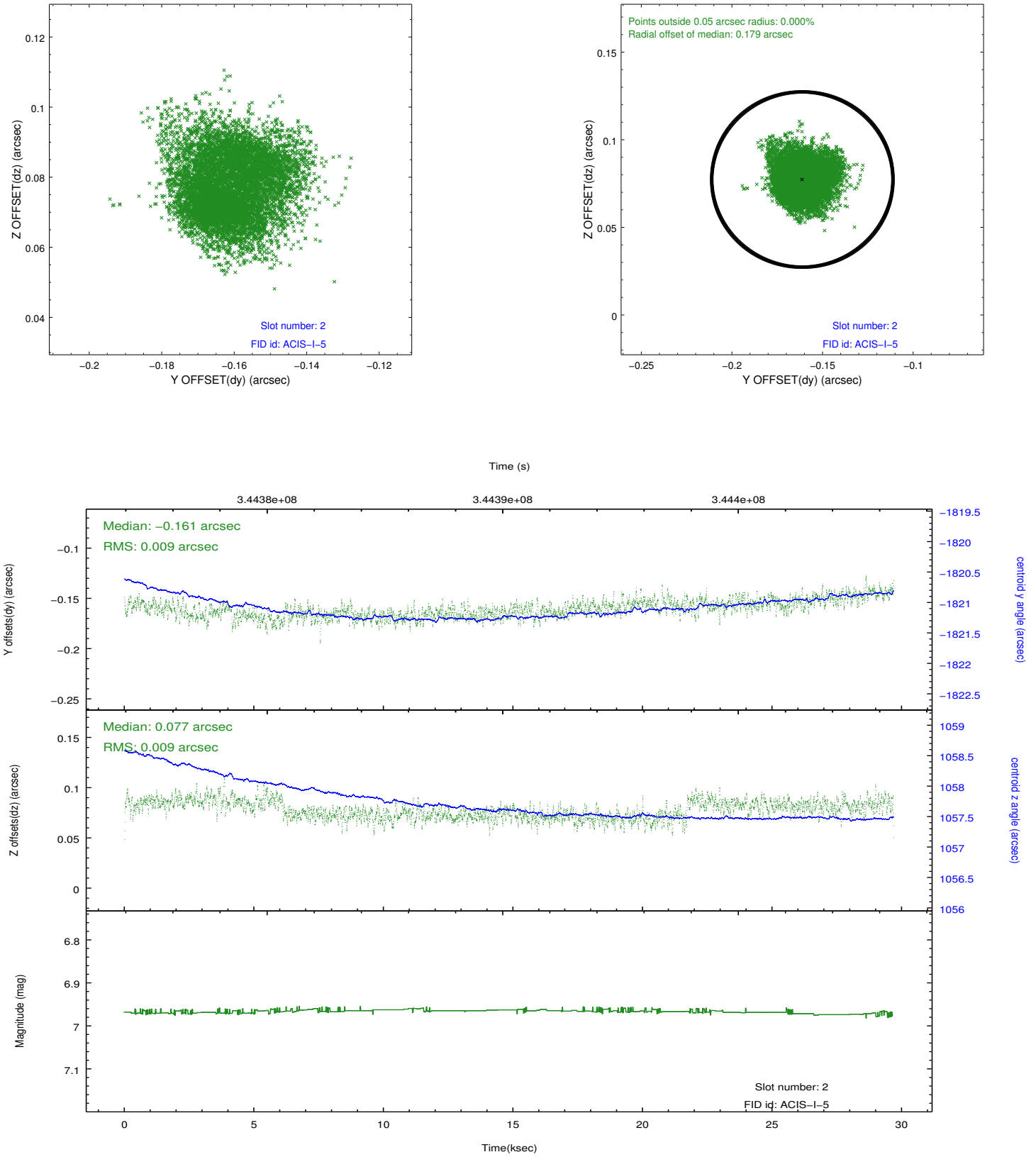
2.5.1 Slot 0



2.5.2 Slot 1



2.5.3 Slot 2



A Summary

A.1 Status

V&V Scientist	Beth Sundheim
V&V Date (YYYY-MM-DD)	2012.05.31
V&V Edition	1
V&V Disposition and Status	OK
V&V Charge Time	29.6732002

A.2 Comments

Joint proposal with HST.