

# V&V Reference Report

## L2 ASCDS Version : 8.4.4

Observation 9871 - L2 Version 3  
Chandra X-Ray Center

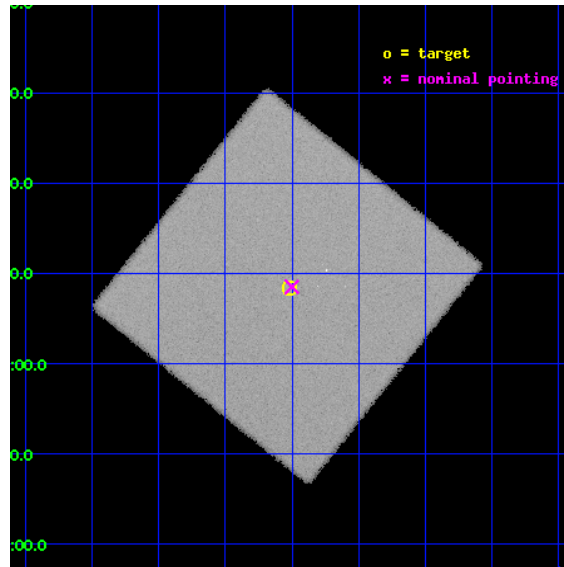
L2 Processing Date : Aug 12 2012

## Contents

<b>1</b>	<b>Front</b>	<b>2</b>
<b>2</b>	<b>OBI</b>	<b>3</b>
2.1	OBI . . . . .	3
2.1.1	Images . . . . .	3
2.1.2	Parameters . . . . .	4
2.1.3	Events . . . . .	4
2.2	Compared Parameters . . . . .	5
2.3	Aspect . . . . .	6
2.4	Star Slots . . . . .	9
2.4.1	Slot 3 . . . . .	9
2.4.2	Slot 4 . . . . .	10
2.4.3	Slot 5 . . . . .	11
2.4.4	Slot 6 . . . . .	12
2.4.5	Slot 7 . . . . .	13
2.5	FID Slots . . . . .	14
2.5.1	Slot 0 . . . . .	14
2.5.2	Slot 1 . . . . .	15
2.5.3	Slot 2 . . . . .	16
<b>A</b>	<b>Summary</b>	<b>17</b>
A.1	Status . . . . .	17
A.2	Comments . . . . .	17

# 1 Front

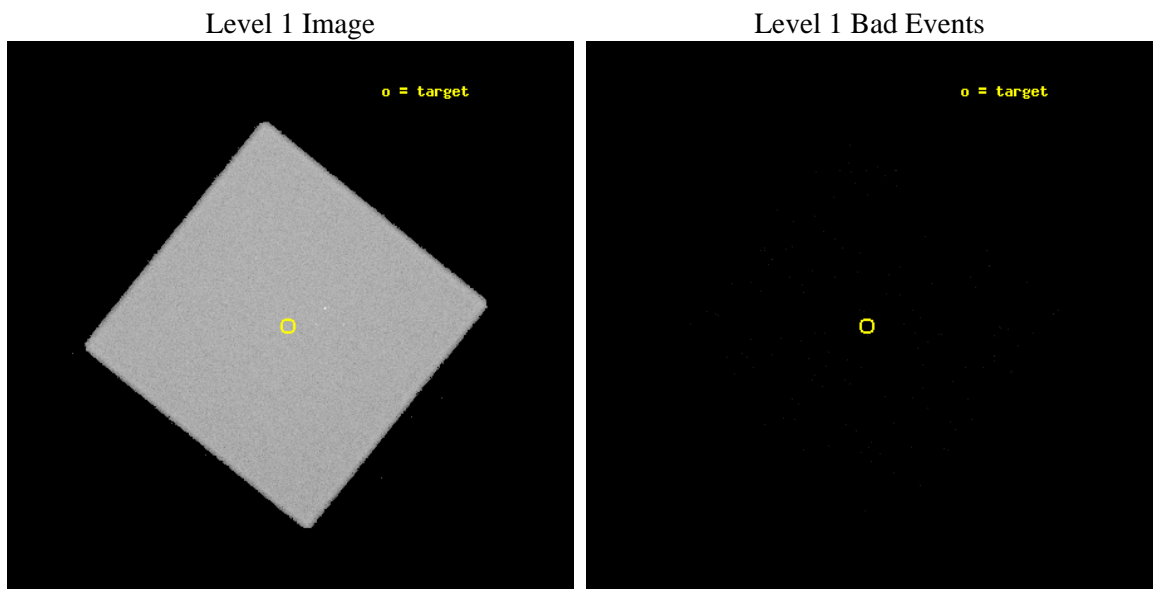
seq_num	200493	Sequence number
obs_id	9871	Observation id
title	Filling in the Coronal Graveyard	Proposal title
observer	Dr. Thomas Ayres	Principal investigator
object	HD157999	Source name
ra_targ	261.62875	Observer's specified target RA [deg]
dec_targ	4.140278	Observer's specified target Dec [deg]
ra_nom	261.62510784284	Nominal RA [deg]
dec_nom	4.142227494776	Nominal Dec [deg]
roll_nom	173.90480283328	Nominal Roll [deg]
revision	3	Processing version of data
ontime	11188.131796896	[s]
livetime	11070.702665213	Ontime multiplied by DTCOR
l2events	706544	Number of level 2 events



## 2 OBI

### 2.1 OBI

#### 2.1.1 Images



### 2.1.2 Parameters

obi_num	0	Obi number	sched_exp_time	11000.000000	[s] Scheduled observation exposure time
ascdsver	8.4.5	Processing system revision	ontime	11188.131796896	[s]
caldbver	4.5.1.1	&#160	l1events	1059287	Number of level 1 events
date	2012-08-12T13:39:10	Date and time of file creation			
revision	3	Processing version of data			

### 2.1.3 Events

#### Level 1 Events

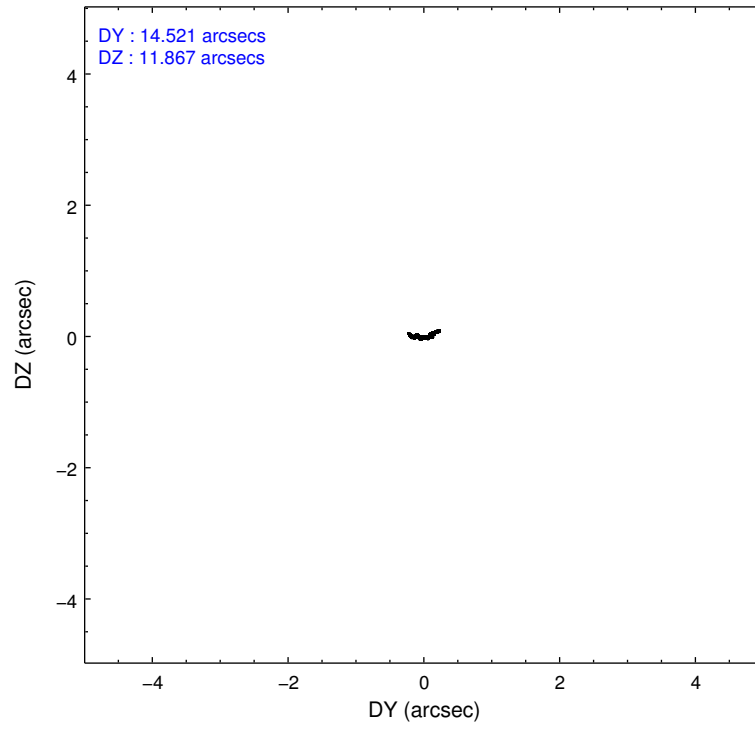
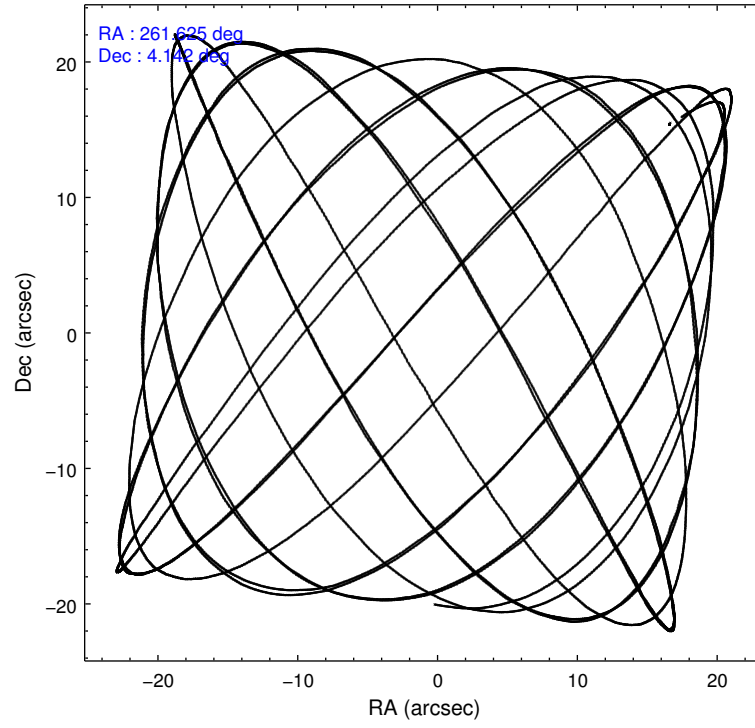
	<b>segment 0</b>
level 1 events	1059287
rejected events	26309
rejected %	2%

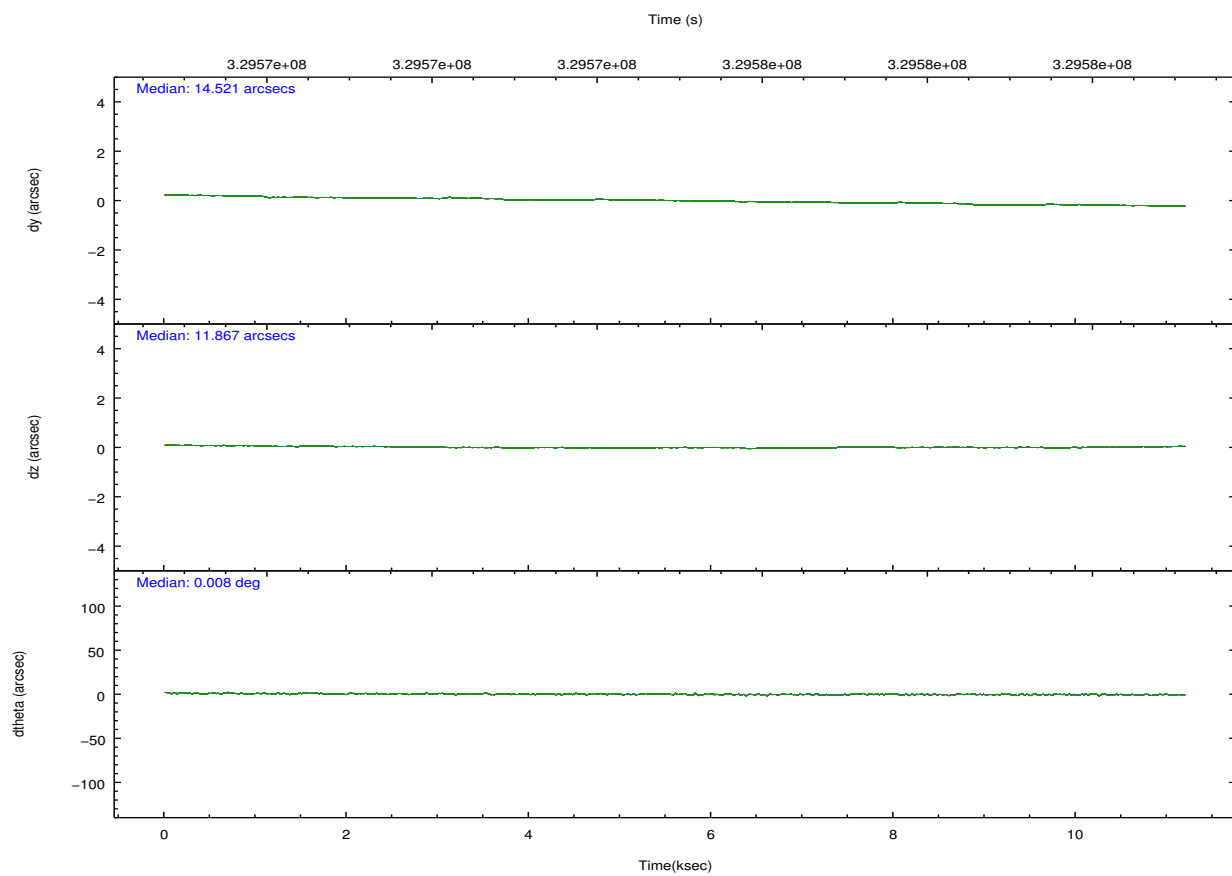
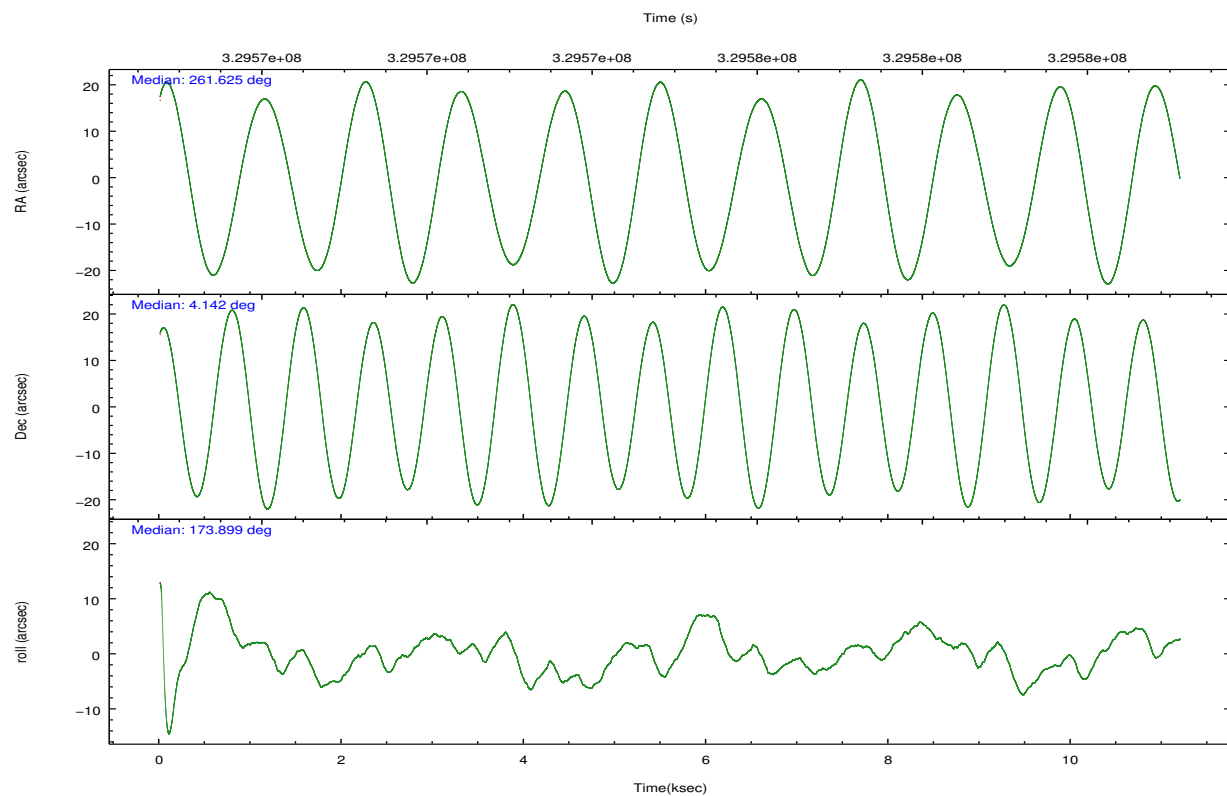


## 2.2 Compared Parameters

Parameter	Planned	Actual	Parameter	Planned	Actual
Instrument	HRC	HRC	Obspar format version number	7	7
Detector	HRC-I	HRC-I	Obspar file type	PREDICTED	ACTUAL
Grating	NONE	NONE	Obspar update status	NONE	UPDATED
Data mode	OBSERVING	OBSERVING			
Observation mode	POINTING	POINTING			
[deg] Pointing RA	261.649669	261.6251078428382			
[deg] Pointing Dec	4.153838	4.142227494776041			
[deg] Pointing Roll	173.998485	173.9048028332828			
[mm] SIM focus pos	-1.040293	-1.038866356238299			
[mm] SIM defocus	0	0.001426264420575141			
[mm] SIM translation stage pos	126.985494	126.9829799899862			
[mm] SIM translation stage offset	0	0.002508901615314585			
[s] Observation start time (MET)	329569550.184000	329568685.96051			
Observation start date	2008-06-11T11:04:45	2008-06-11T10:51:25			
[s] Observation end time (MET)	329580550.184000	329581326.77363			
Observation end date	2008-06-11T14:08:05	2008-06-11T14:22:06			

## 2.3 Aspect



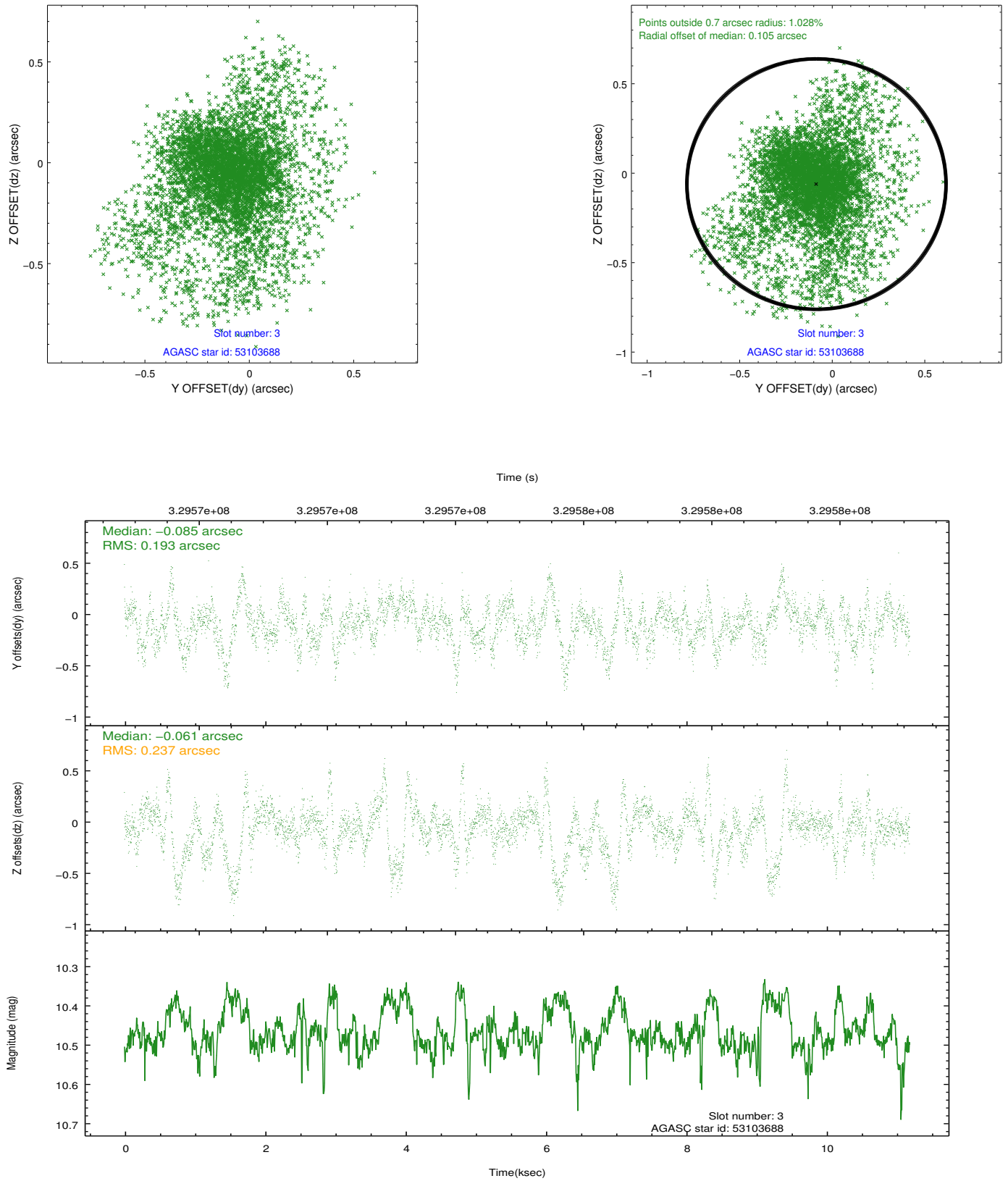


### Slot Statistics

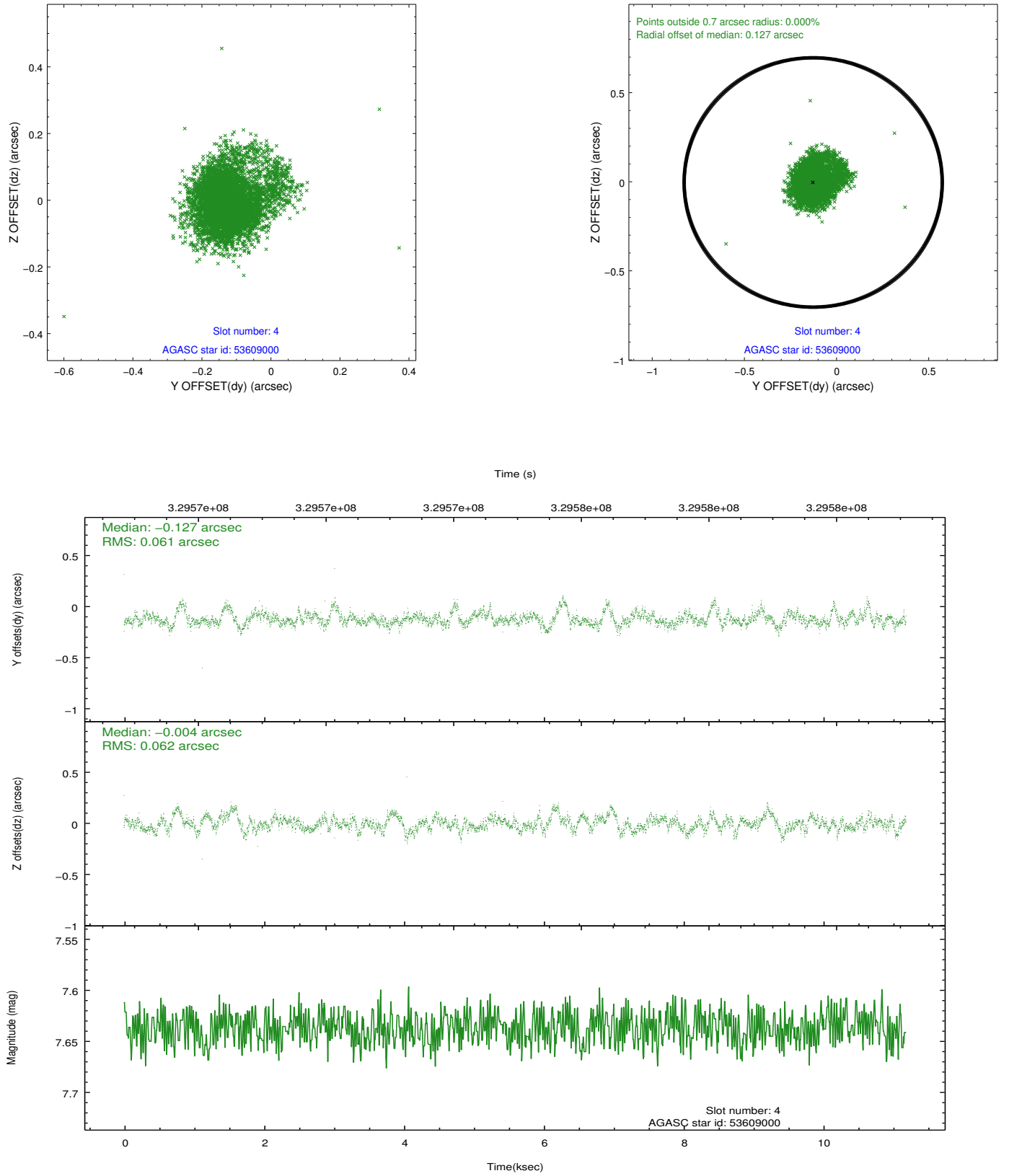
slot	status	id	mag	n_pts	med_dy	med_dz	dr1	dr2	ra	dec	mean_y	mean_z
0	FID	HRC-I-1	6.96	2730	-0.059	0.016	0.007	0.011	0.000000	0.000000	-770.36	-1299.85
1	FID	HRC-I-2	6.99	2730	0.214	-0.126	0.006	0.011	0.000000	0.000000	842.26	-1302.04
2	FID	HRC-I-3	7.06	2730	-0.036	0.021	0.006	0.010	0.000000	0.000000	-1198.52	1004.24
3	GUIDE	53103688	10.47	5446	-0.085	-0.061	0.300	0.589	261.114929	3.579149	1694.98	2258.18
4	GUIDE	53609000	7.64	5459	-0.127	-0.004	0.088	0.161	261.617772	4.284825	164.14	-456.35
5	GUIDE	53621384	8.91	5453	0.006	0.027	0.118	0.191	261.447815	4.661935	912.64	-1743.34
6	GUIDE	53623528	9.80	5456	0.151	0.060	0.173	0.269	262.205768	4.147330	-1987.22	-186.20
7	GUIDE	53623736	7.63	5456	0.057	-0.004	0.102	0.168	261.926261	4.328584	-921.09	-729.20

## 2.4 Star Slots

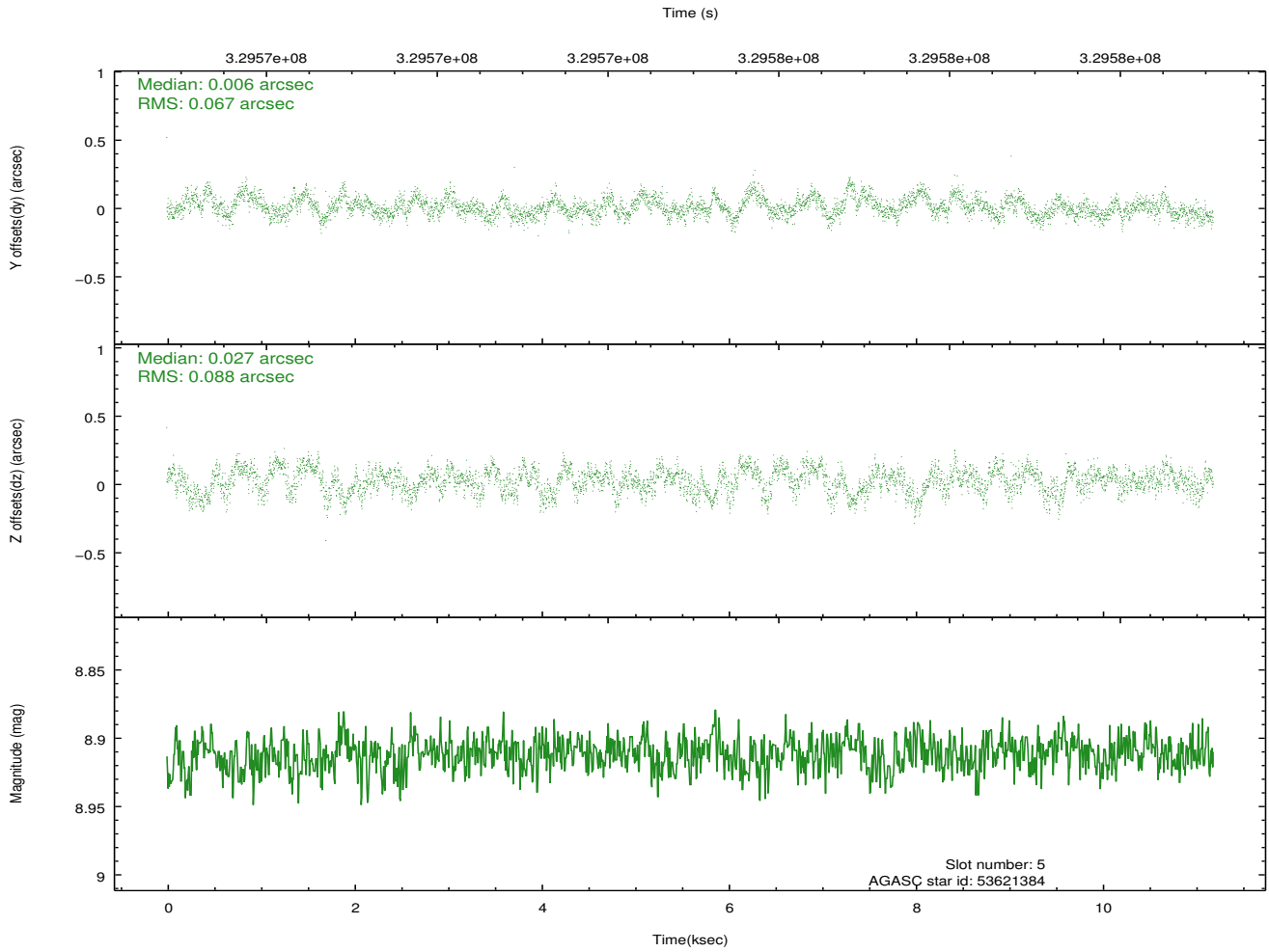
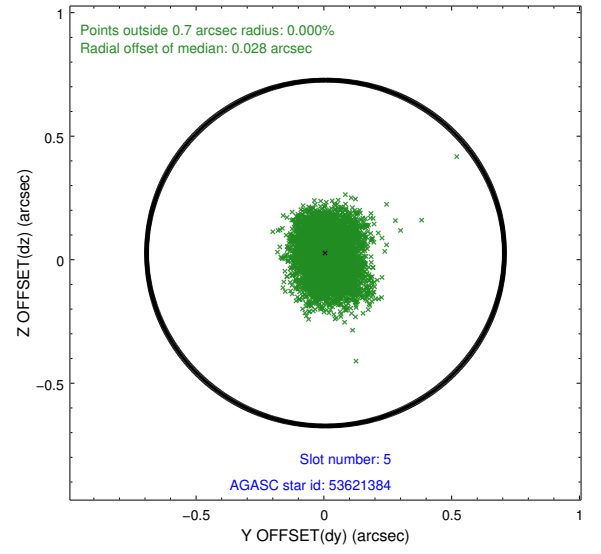
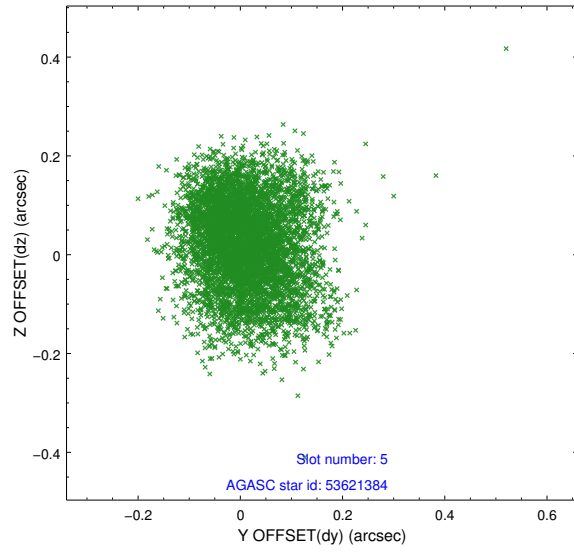
### 2.4.1 Slot 3



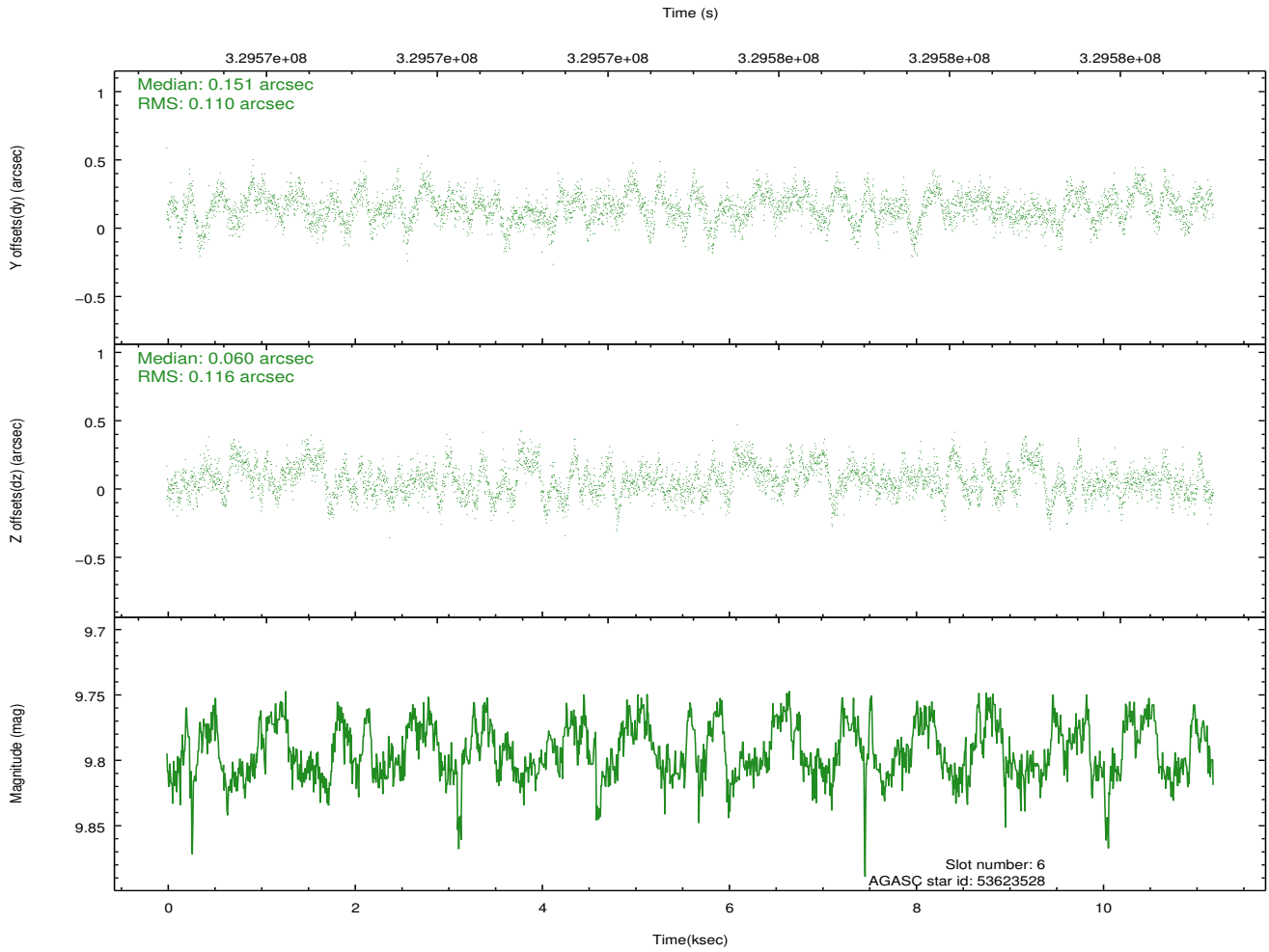
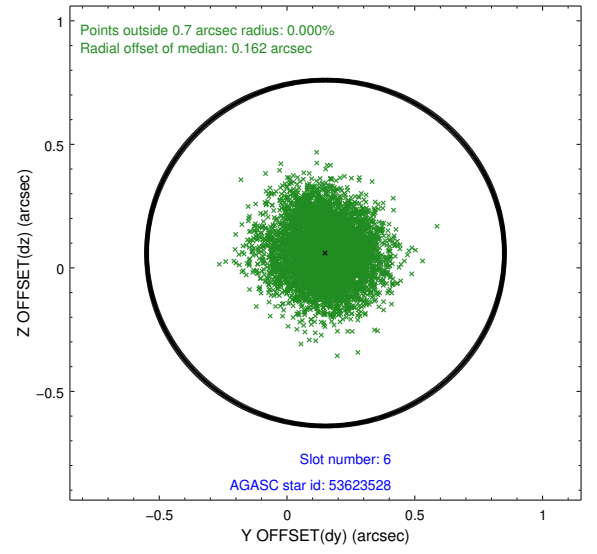
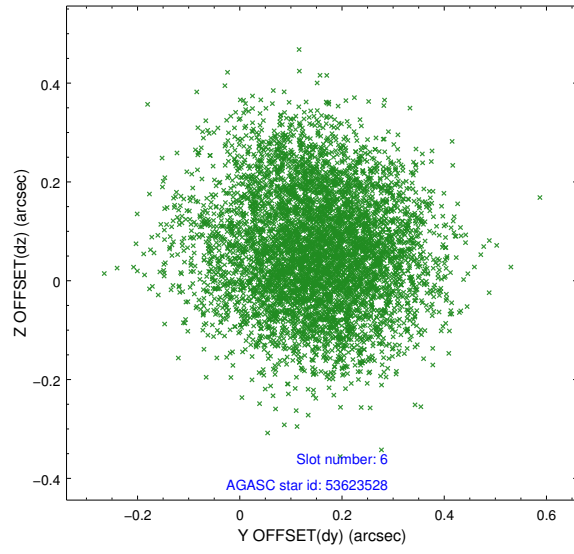
## 2.4.2 Slot 4



### 2.4.3 Slot 5

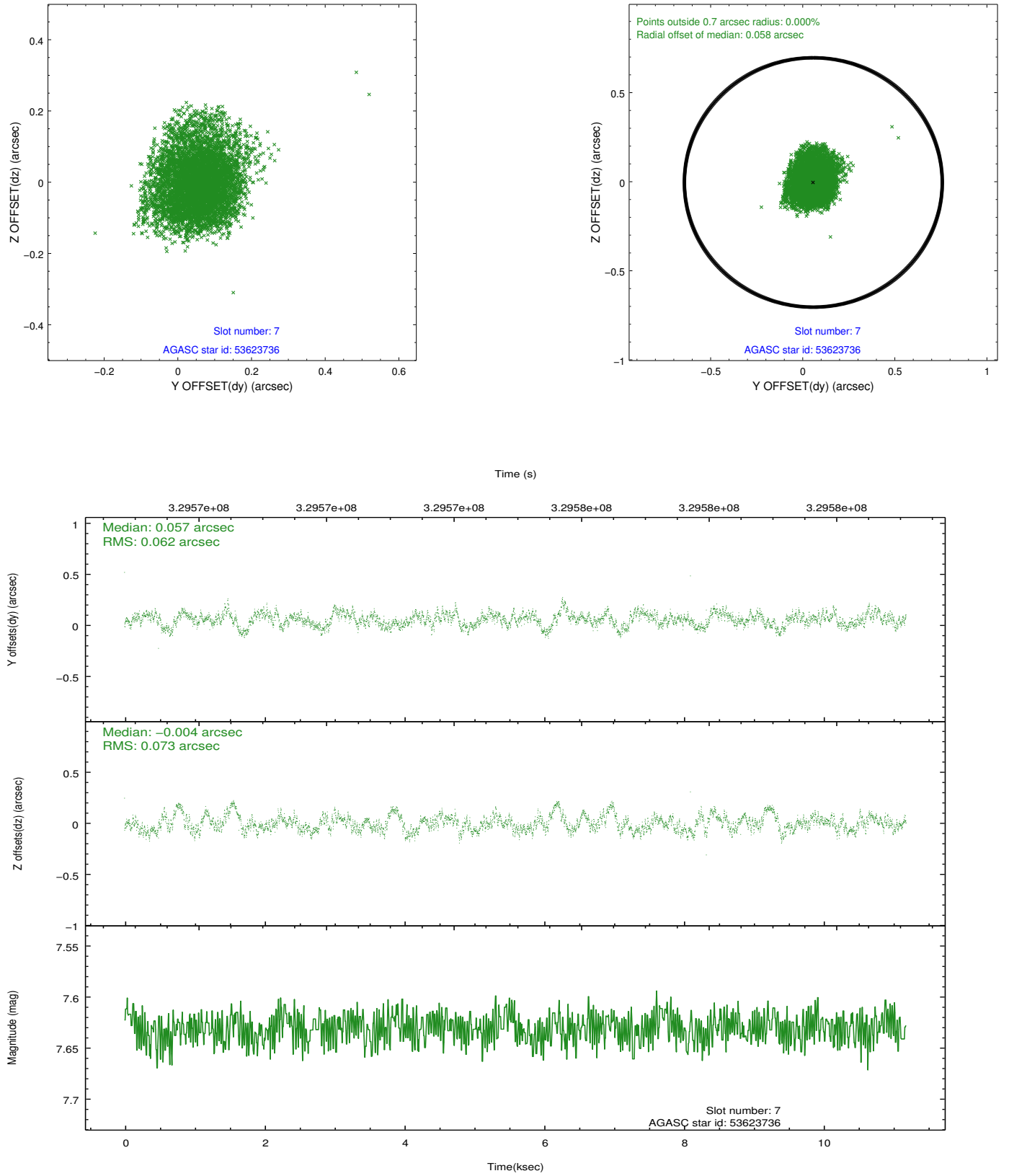


## 2.4.4 Slot 6



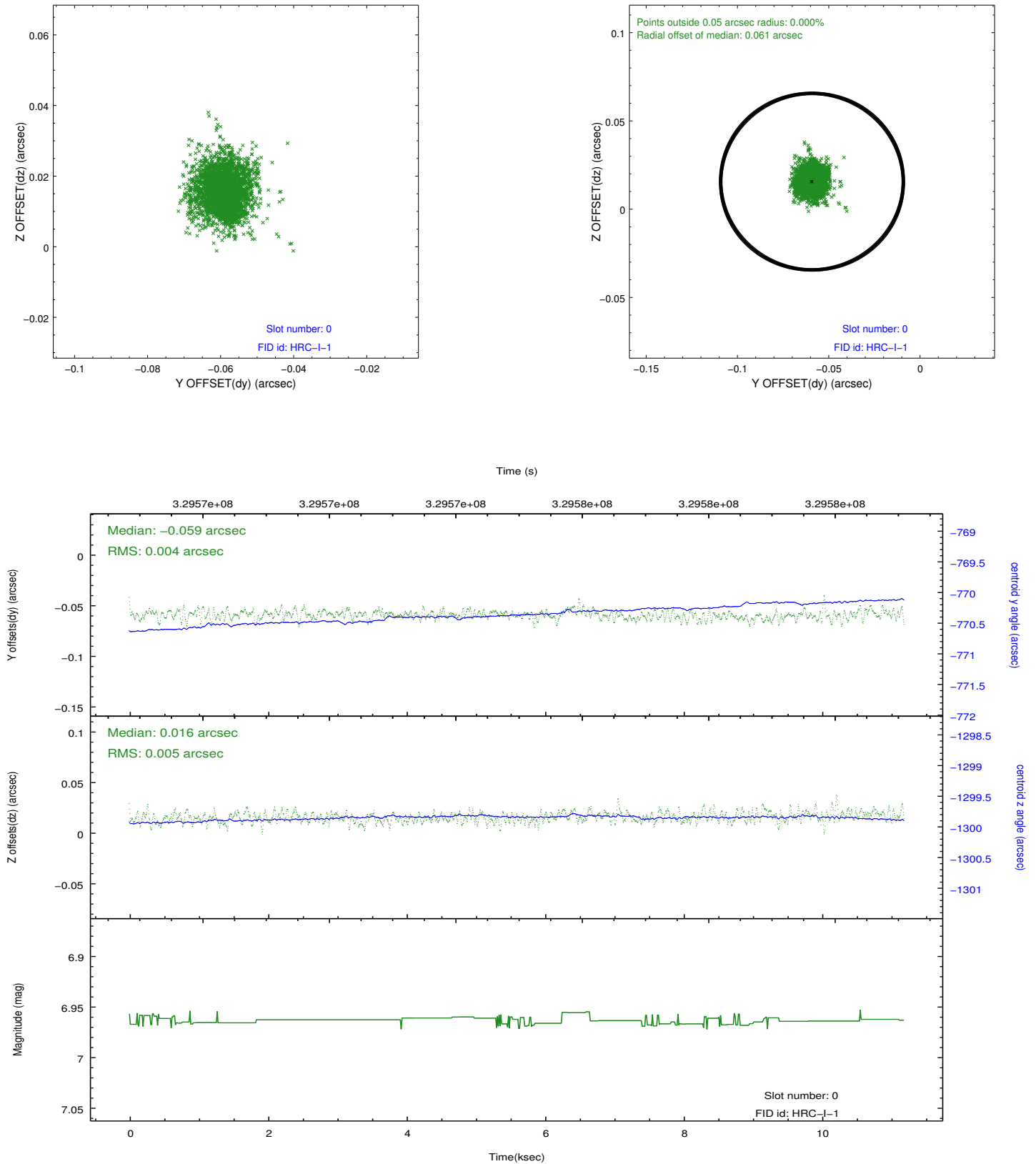


## 2.4.5 Slot 7

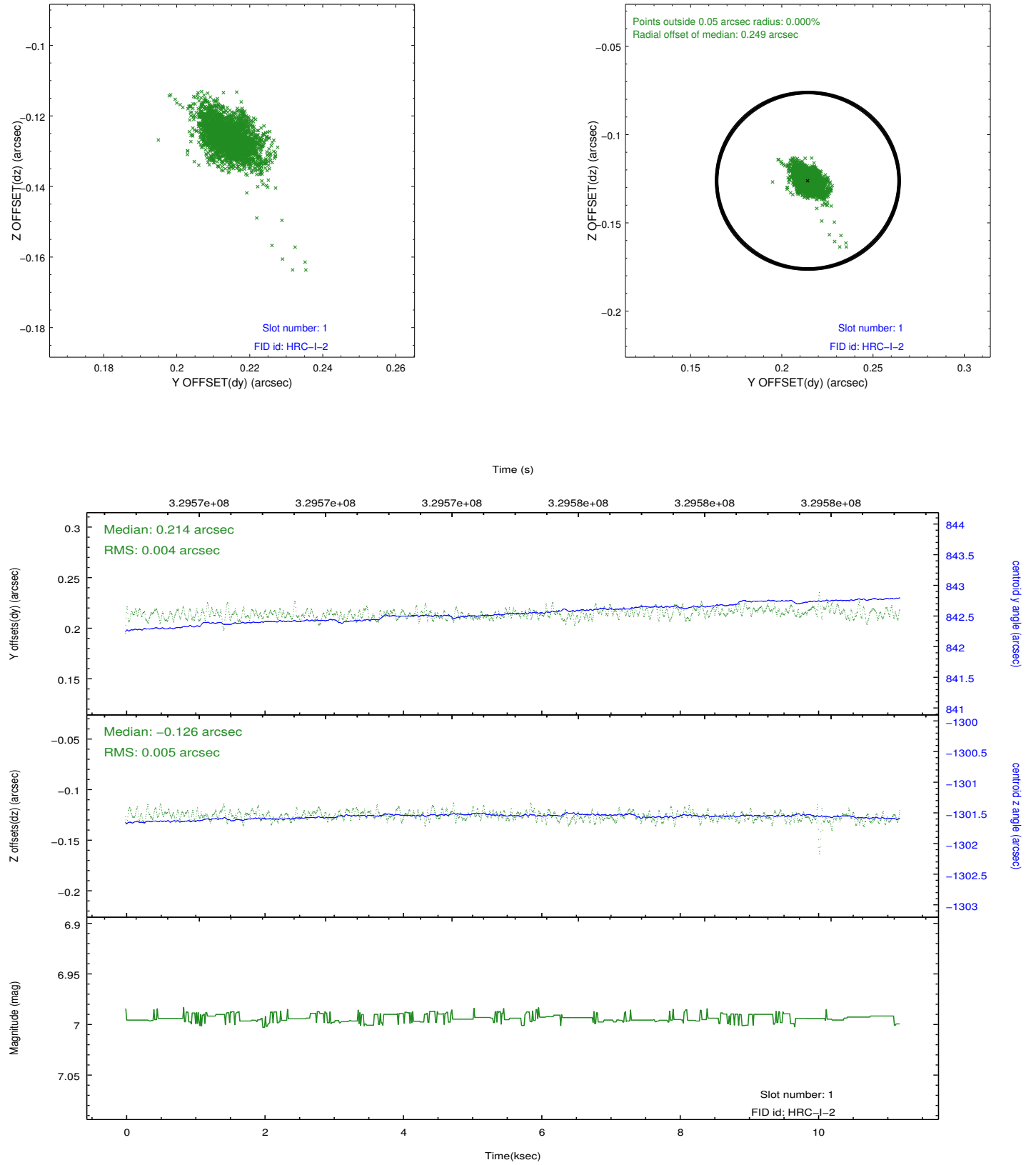


## 2.5 FID Slots

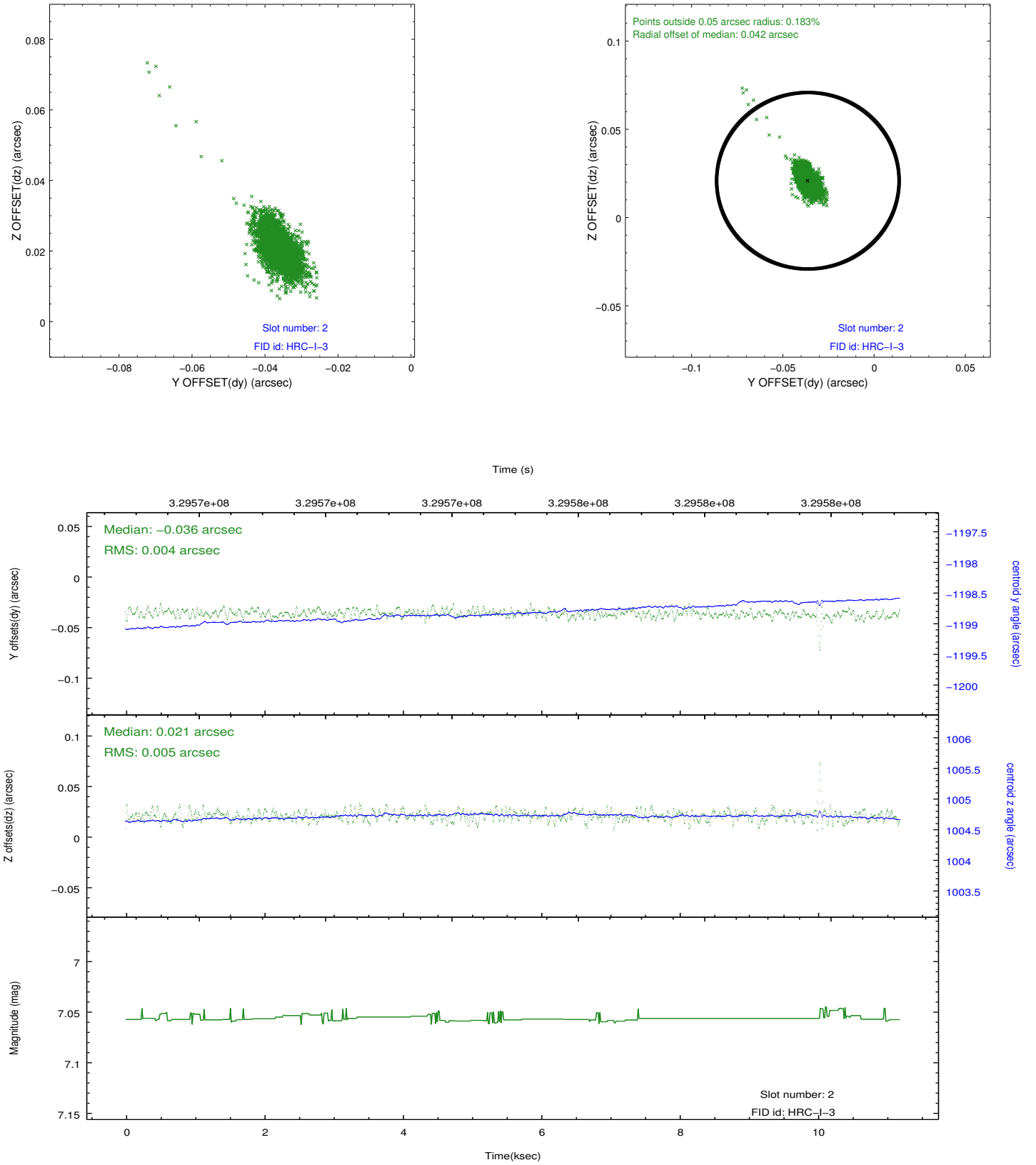
### 2.5.1 Slot 0



## 2.5.2 Slot 1



### 2.5.3 Slot 2



## A Summary

### A.1 Status

V&V Scientist	Beth Sundheim
V&V Date (YYYY-MM-DD)	2012.08.16
V&V Edition	1
V&V Disposition and Status	OK
V&V Charge Time	11.1881317

### A.2 Comments