

V&V Reference Report

L2 ASCDS Version : 8.4.5

Observation 951 - L2 Version 3
Chandra X-Ray Center

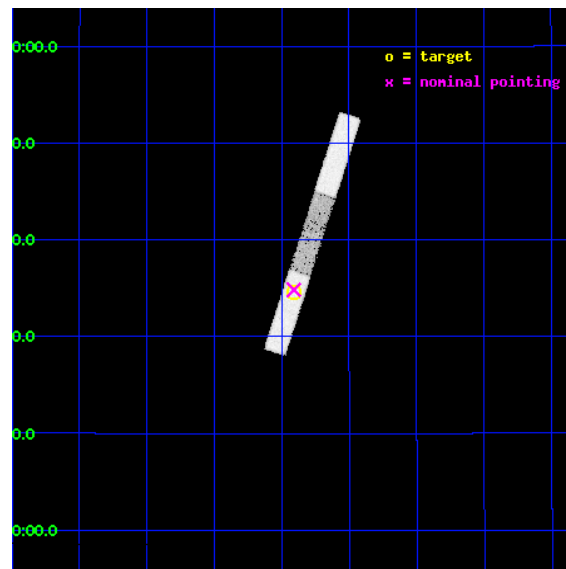
L2 Processing Date : Sep 1 2012

Contents

1	Front	2
2	OBI	3
2.1	OBI	3
2.1.1	Images	3
2.1.2	Bias	3
2.1.3	Parameters	4
2.1.4	Events	4
2.2	Compared Parameters	5
2.3	Aspect	6
2.4	Star Slots	9
2.4.1	Slot 3	9
2.4.2	Slot 4	10
2.4.3	Slot 5	11
2.4.4	Slot 6	12
2.4.5	Slot 7	13
2.5	FID Slots	14
2.5.1	Slot 0	14
2.5.2	Slot 1	15
2.5.3	Slot 2	16
A	Summary	17
A.1	Status	17
A.2	Comments	17

1 Front

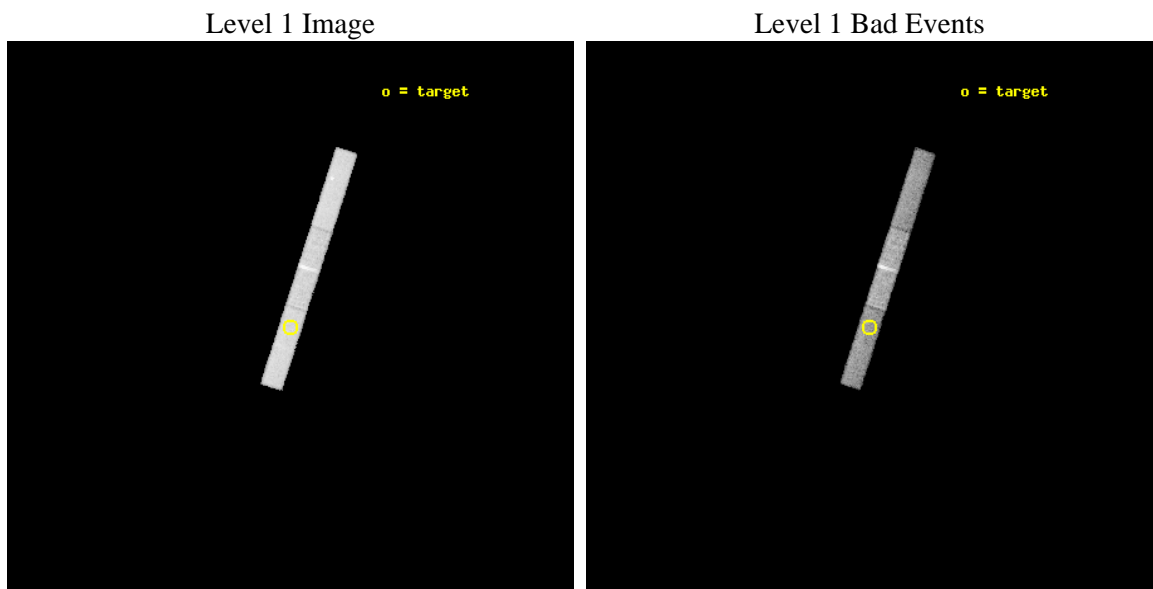
seq_num	900023	Sequence number
obs_id	951	Observation id
title	ECLIPSES AND HALOS IN THE X-RAY PULSAR 1H0253+193	Proposal title
observer	Dr. John Nousek	Principal investigator
object	1H 0253+193	Source name
dtcycle	0	
cycle	P	events from which exps? Prim/Second/Both
ra_targ	44.726667	Observer's specified target RA [deg]
dec_targ	19.576083	Observer's specified target Dec [deg]
ra_nom	44.727070354954	Nominal RA [deg]
dec_nom	19.580687579256	Nominal Dec [deg]
roll_nom	107.89581390459	Nominal Roll [deg]
revision	3	Processing version of data
ontime	22652.100150019	Sum of GTIs [s]
livetime	21664.212079207	Livetime [s]
ontime5	22652.100150019	Sum of GTIs [s]
ontime6	22652.100150019	Sum of GTIs [s]
ontime7	22652.100150019	Sum of GTIs [s]
l2events	52921	Number of level 2 events



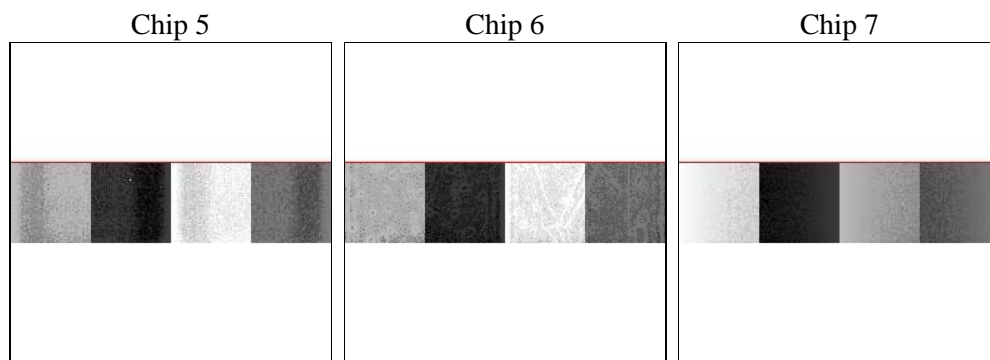
2 OBI

2.1 OBI

2.1.1 Images



2.1.2 Bias



2.1.3 Parameters

obi_num	0	Obi number	sched_exp_time	22000.000000	[s] Scheduled observation exposure time
ascdsver	8.4.5	Processing system revision	ontime	22652.100150019	Sum of GTIs [s]
caldsver	4.5.1.1	 	ontime5	22652.100150019	Sum of GTIs [s]
date	2012-09-01T15:45:03	Date and time of file creation	ontime6	22652.100150019	Sum of GTIs [s]
revision	3	Processing version of data	ontime7	22652.100150019	Sum of GTIs [s]
			l1events	143772	Number of level 1 events

2.1.4 Events

	ccd 5	ccd 6	ccd 7
level 1 events	50757	44400	48615
rejected events	24445	39581	24187
rejected %	48%	89%	49%

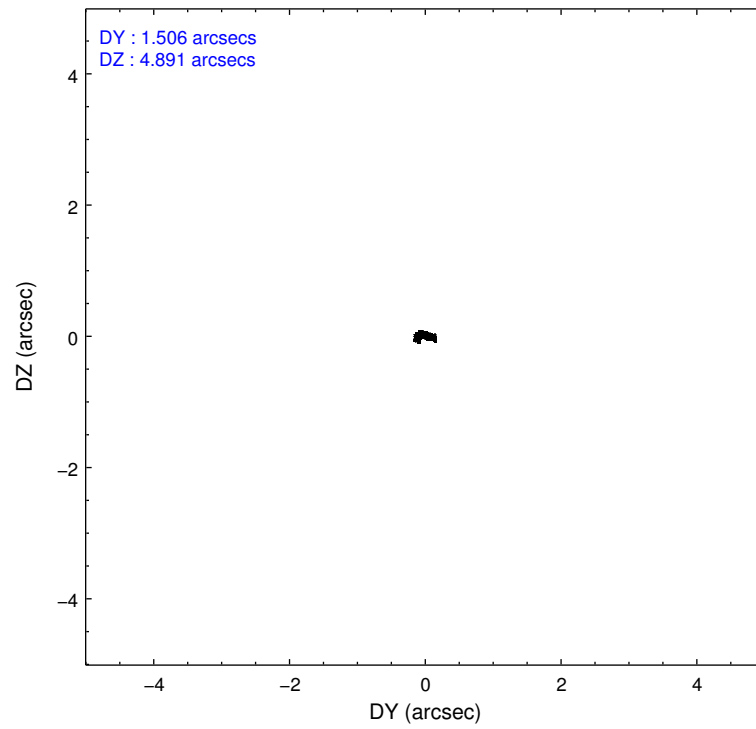
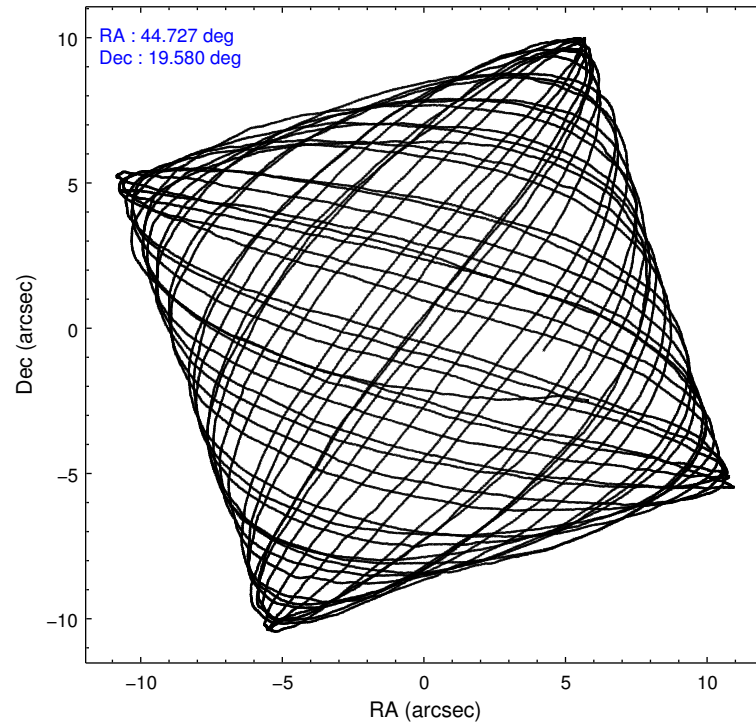
	ccd 5	ccd 6	ccd 7
grade 0 events	3439	1750	2744
	6%	3%	5%
grade 1 events	62	9	34
	0%	0%	0%
grade 2 events	7098	754	4846
	13%	1%	9%
grade 3 events	1925	740	2618
	3%	1%	5%
grade 4 events	1800	754	2484
	3%	1%	5%
grade 5 events	3847	1326	4001
	7%	2%	8%
grade 6 events	12193	838	11810
	24%	1%	24%
grade 7 events	20393	38229	20078
	40%	86%	41%

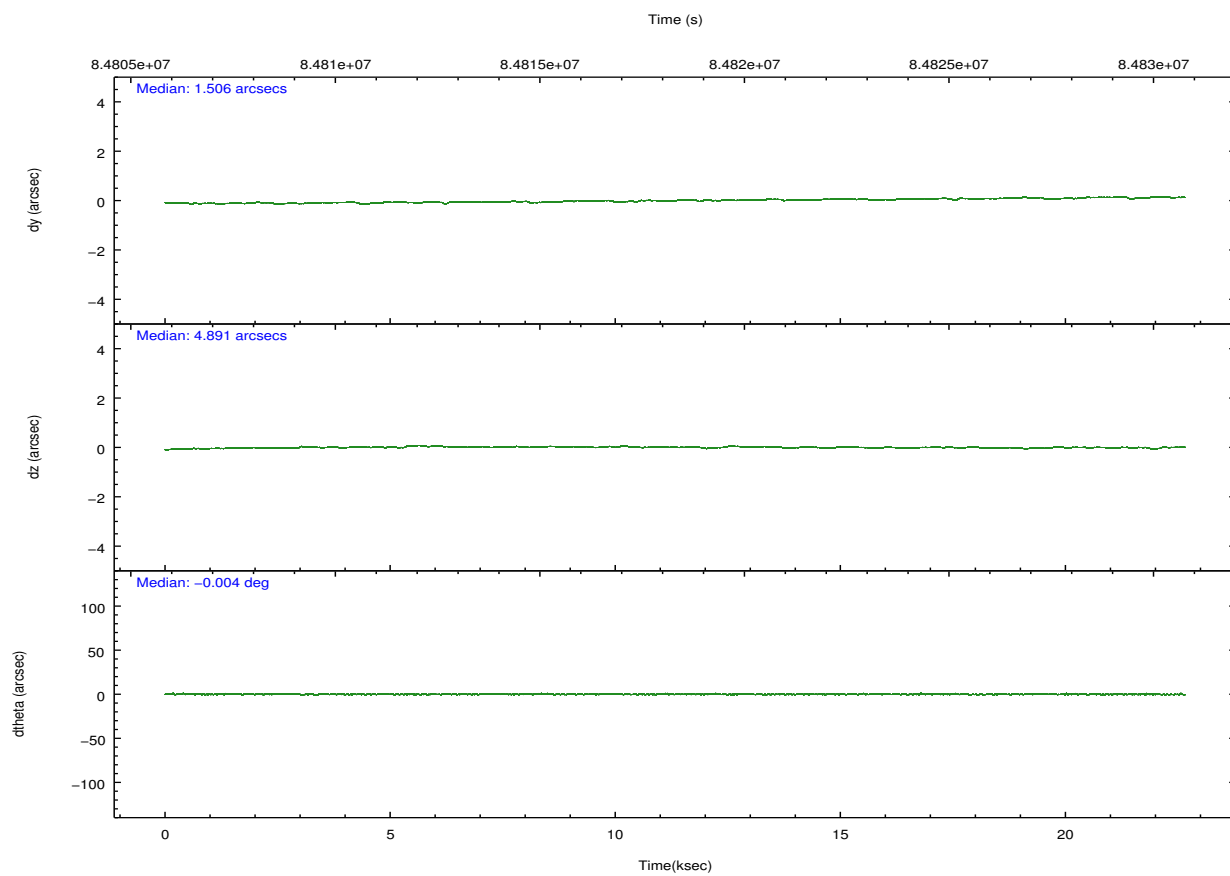
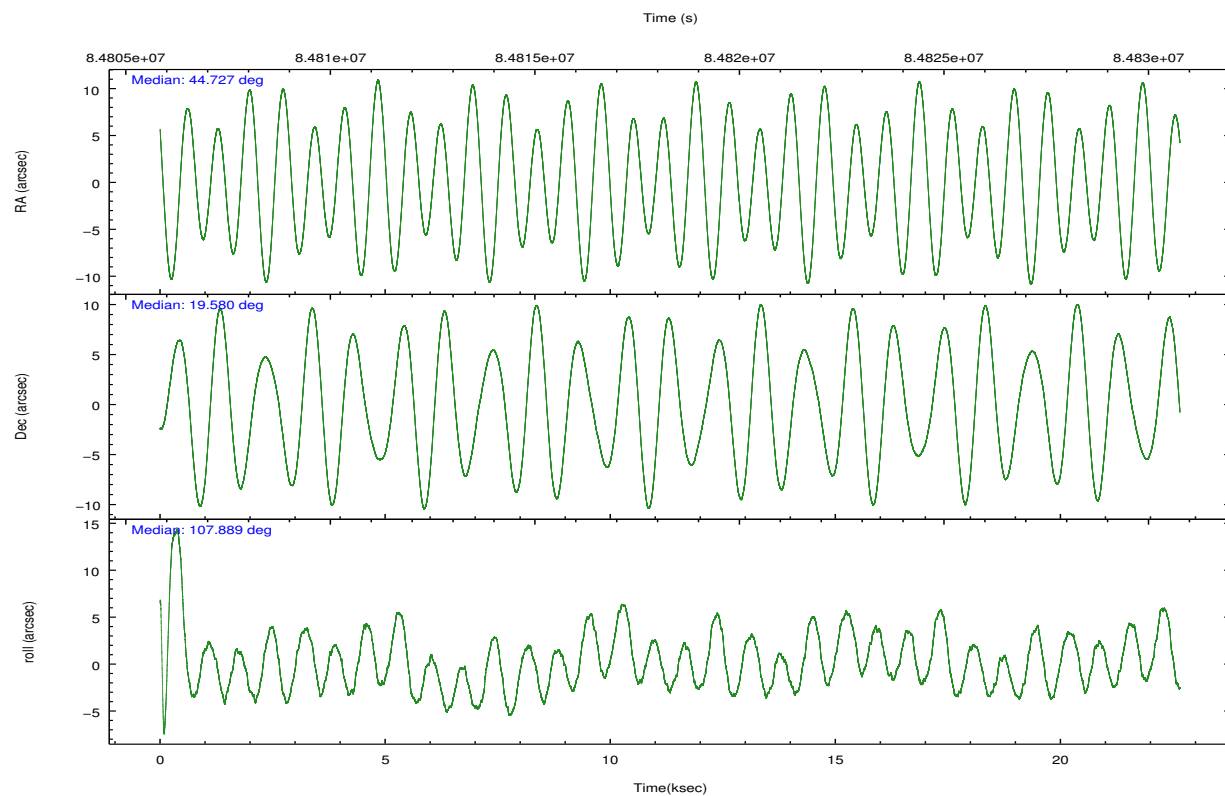
2.2 Compared Parameters

Parameter	Planned	Actual
Instrument	ACIS	ACIS
Detector	ACIS-567	ACIS-567
Grating	NONE	NONE
Data mode	VFAINT	VFAINT
Observation mode	POINTING	POINTING
[deg] Pointing RA	44.748758	44.72707035495366
[deg] Pointing Dec	19.562440	19.58068757925625
[deg] Pointing Roll	107.731916	107.8958139045887
[mm] SIM focus pos	-0.684267	-0.6828225247311905
[mm] SIM defocus	0	0.001444936568705701
[mm] SIM translation stage pos	-190.132523	-190.1400660498719
[mm] SIM translation stage offset	0	0.00754346686406393
[s] Observation start time (MET)	84807632.184000	84806439.576113
Observation start date	2000-09-08T13:39:28	2000-09-08T13:20:39
[s] Observation end time (MET)	84829632.184000	84830142.189503
Observation end date	2000-09-08T19:46:08	2000-09-08T19:55:42
Read mode	TIMED	TIMED

Parameter	Planned	Actual
Obspar format version number	7	7
Obspar file type	PREDICTED	ACTUAL
Obspar update status	NONE	UPDATED
Number of optional ACIS chips dropped	0	0
On-chip summing requested	N	N
Subarray requested	CUSTOM	1/4
Subarray start row	385	385
Subarray row count	256	256
Alternating exposures requested	N	N
[s] Primary exposure time	0.000000	0.9

2.3 Aspect



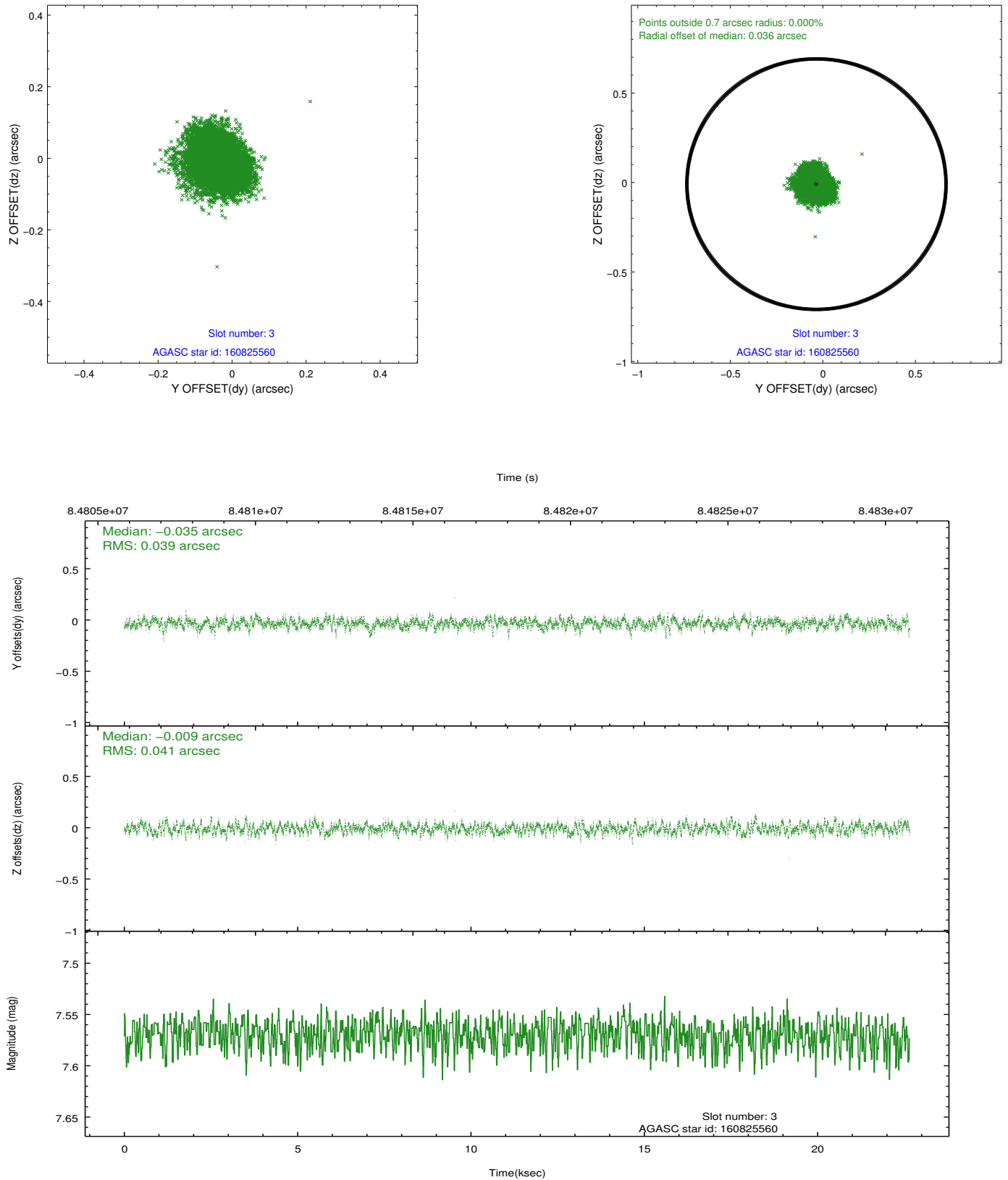


Slot Statistics

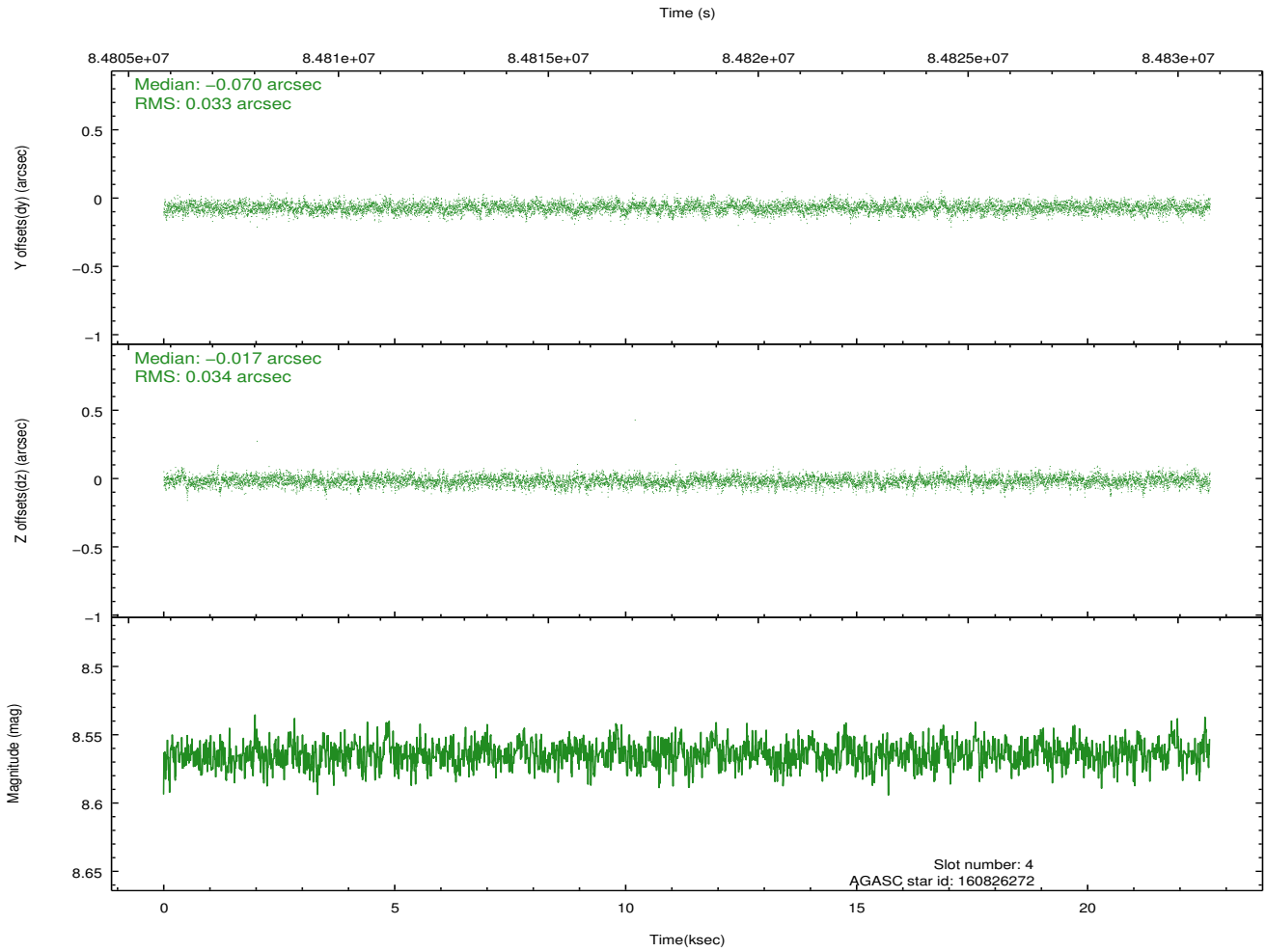
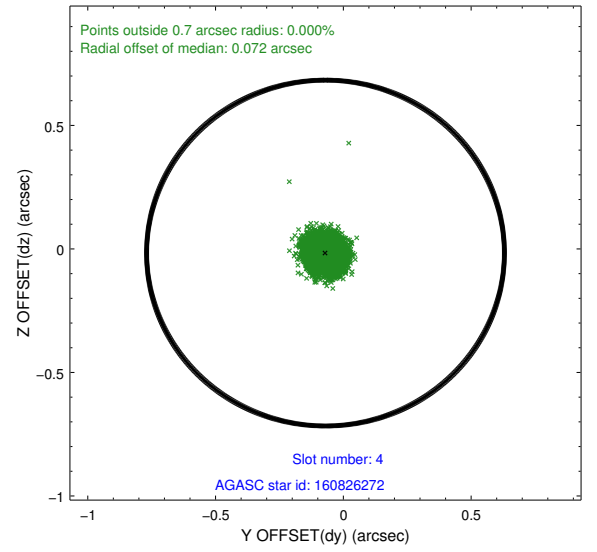
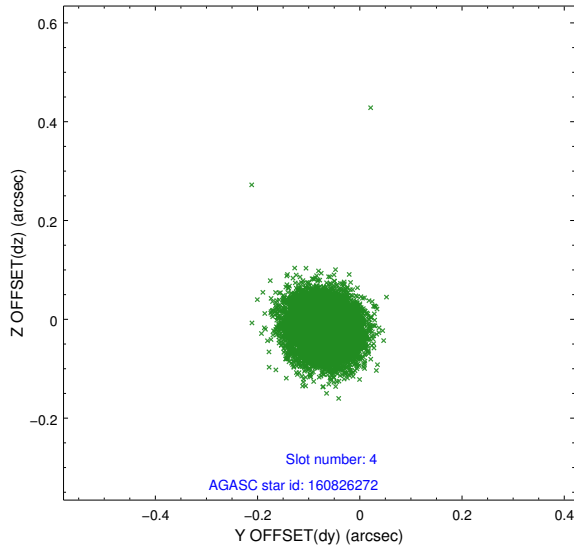
slot	status	id	mag	n_pts	med_dy	med_dz	dr1	dr2	ra	dec	mean_y	mean_z
0	FID	ACIS-S-2	7.11	5524	-0.035	-0.002	0.007	0.011	0.000000	0.000000	-754.13	-1726.00
1	FID	ACIS-S-4	7.21	5524	-0.013	0.017	0.006	0.010	0.000000	0.000000	2159.09	182.37
2	FID	ACIS-S-5	7.23	5525	0.017	-0.007	0.007	0.011	0.000000	0.000000	-1806.74	176.15
3	GUIDE	160825560	7.57	11049	-0.035	-0.009	0.060	0.098	44.793323	19.989840	1420.89	-611.15
4	GUIDE	160826272	8.56	11049	-0.070	-0.017	0.051	0.082	44.763218	19.727857	553.62	-227.09
5	GUIDE	160831512	8.85	11050	0.062	-0.185	0.073	0.119	44.599048	19.229287	-985.97	850.56
6	GUIDE	160964432	8.99	11043	0.062	0.167	0.076	0.124	45.514815	19.373768	-1432.39	-2271.94
7	GUIDE	161225384	9.56	11012	-0.020	0.036	0.101	0.162	44.862508	20.066818	1613.69	-918.46

2.4 Star Slots

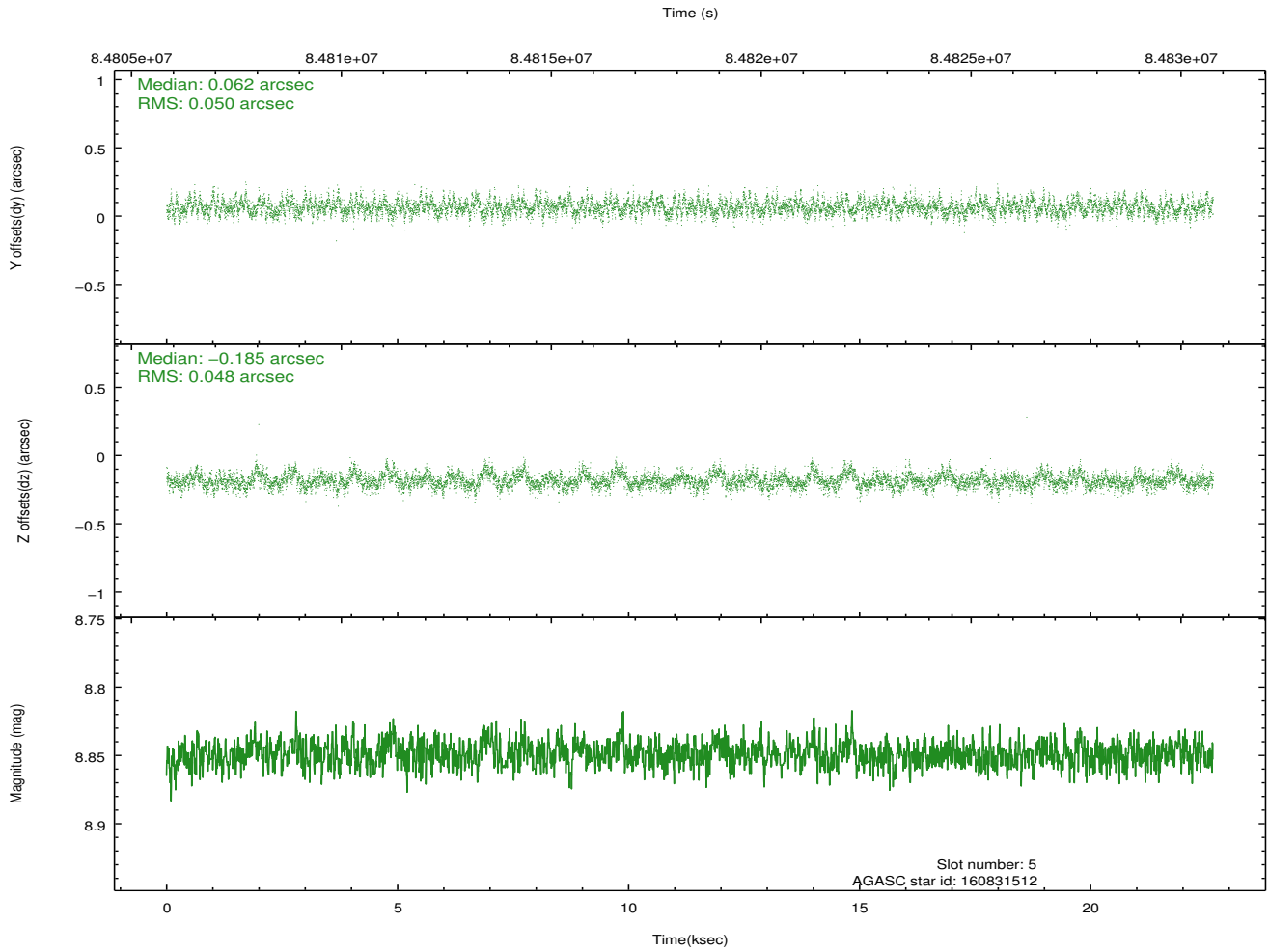
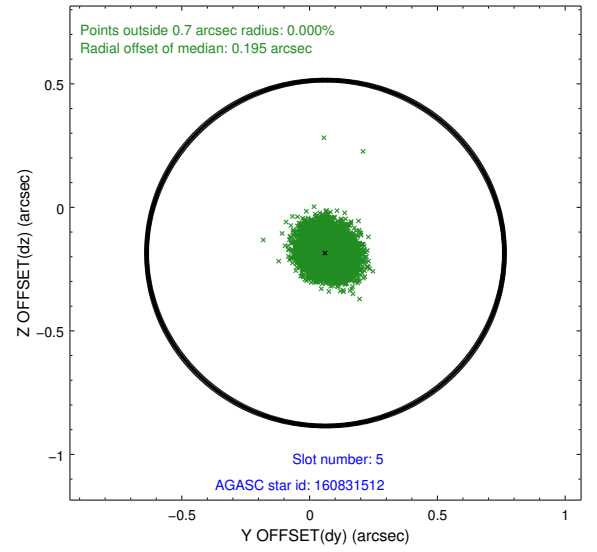
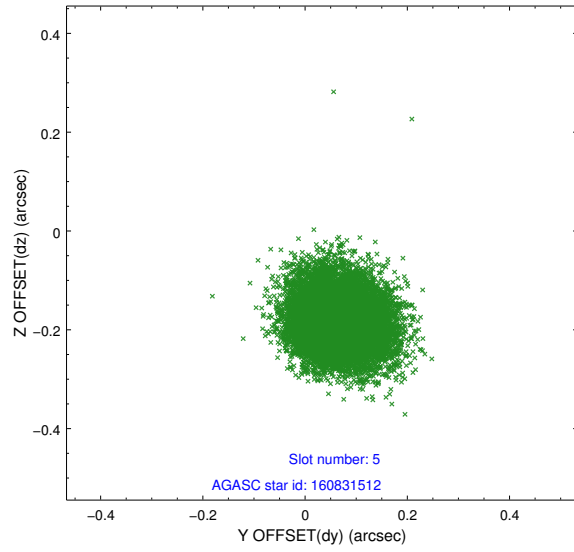
2.4.1 Slot 3



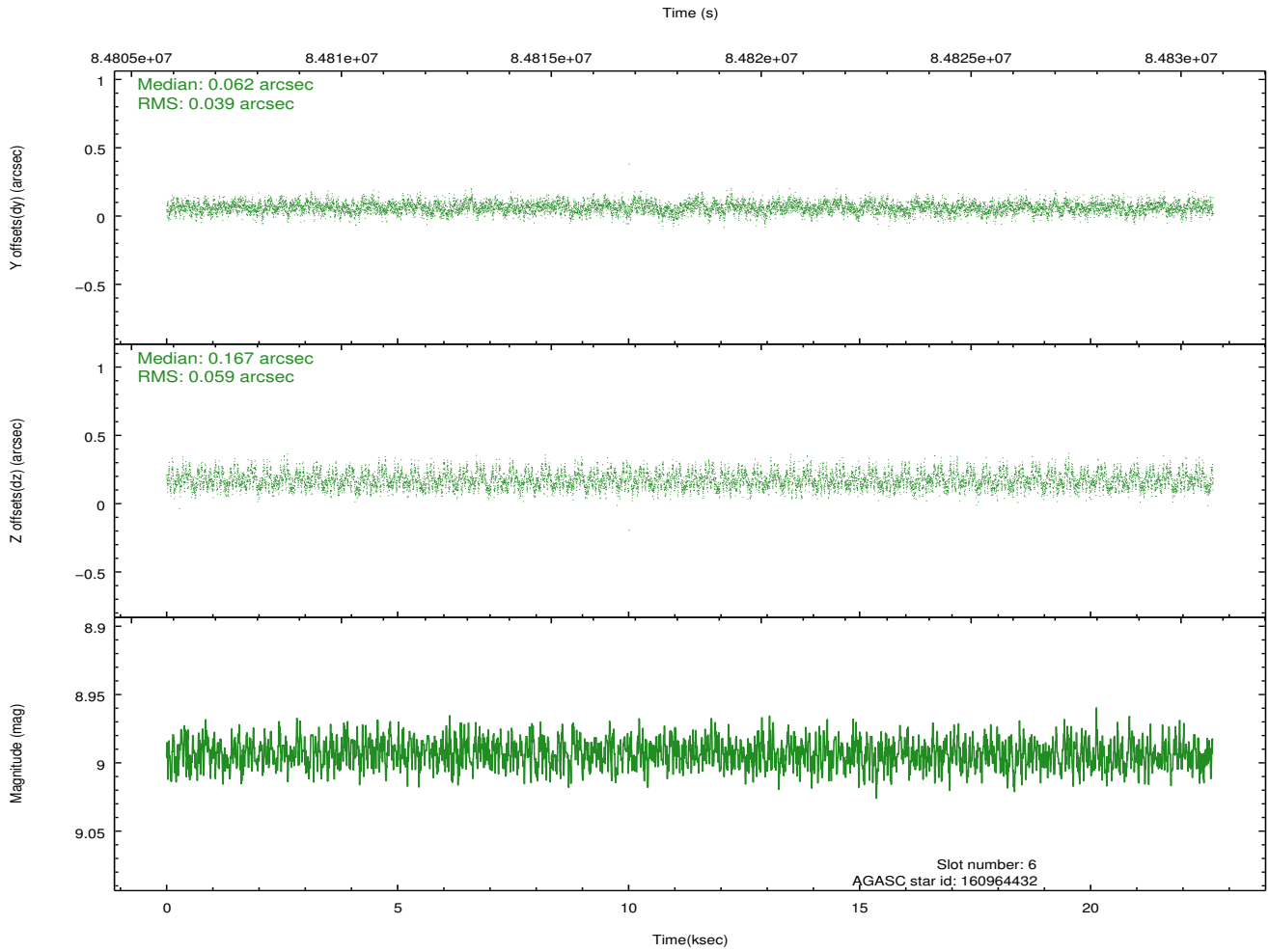
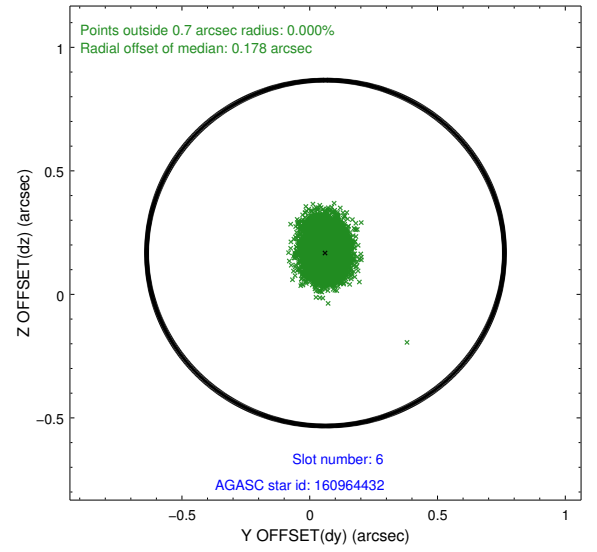
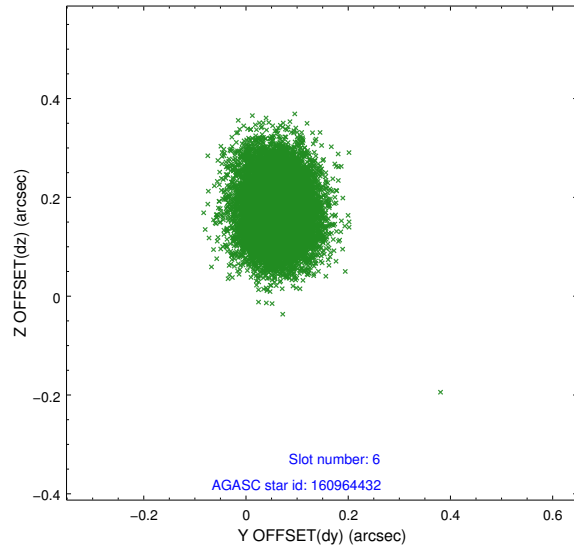
2.4.2 Slot 4



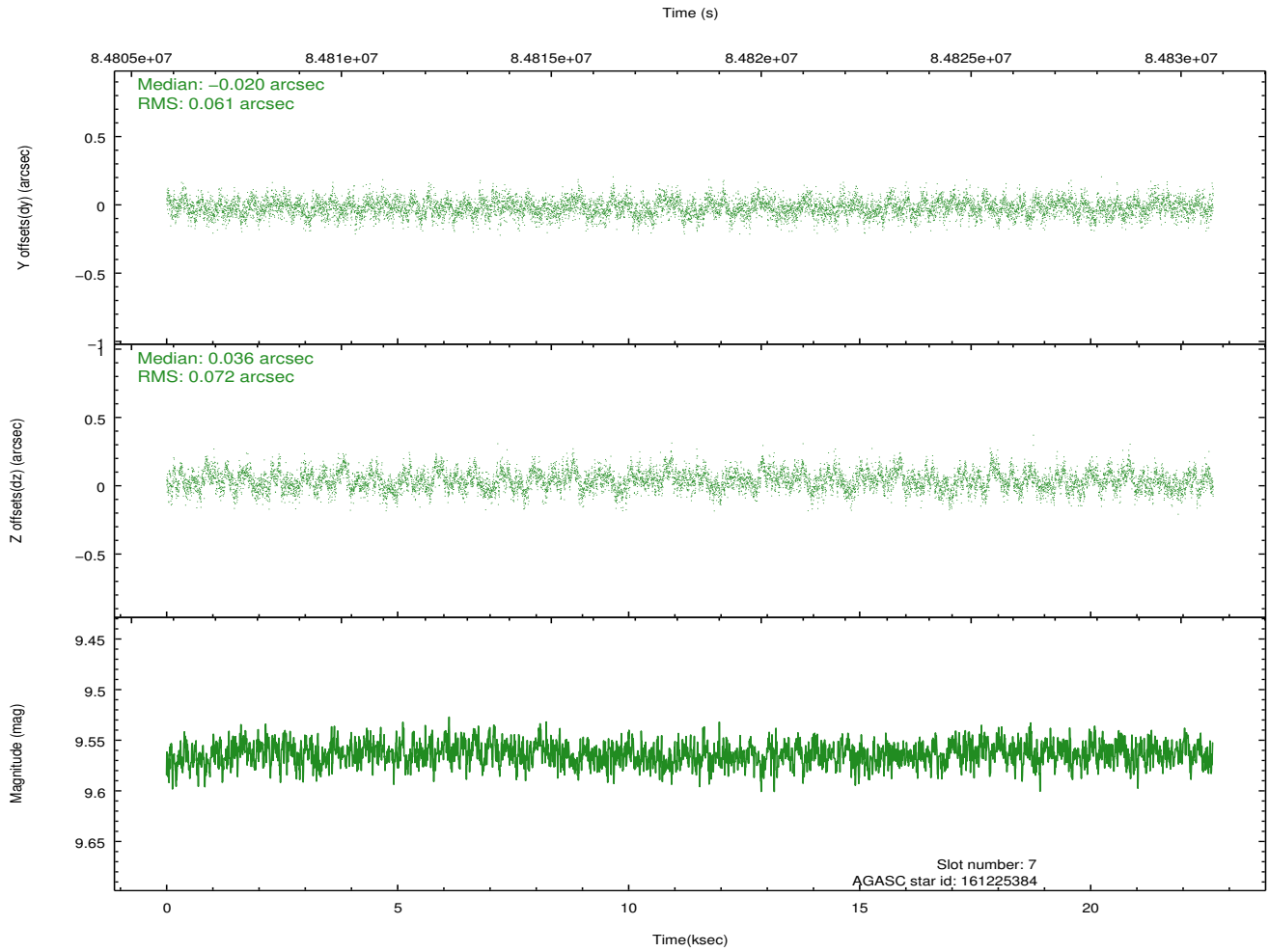
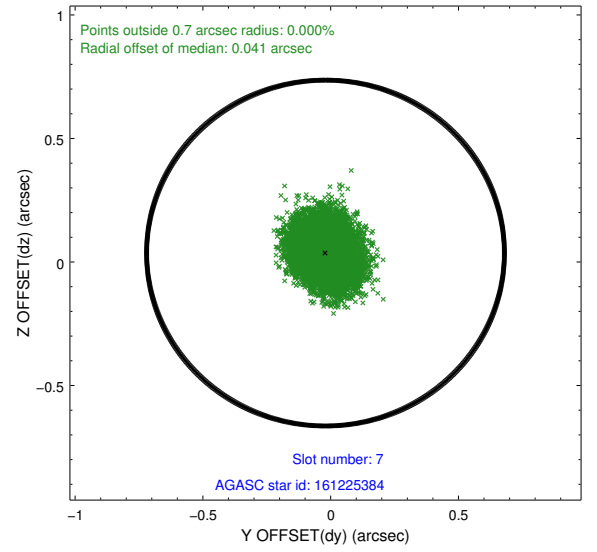
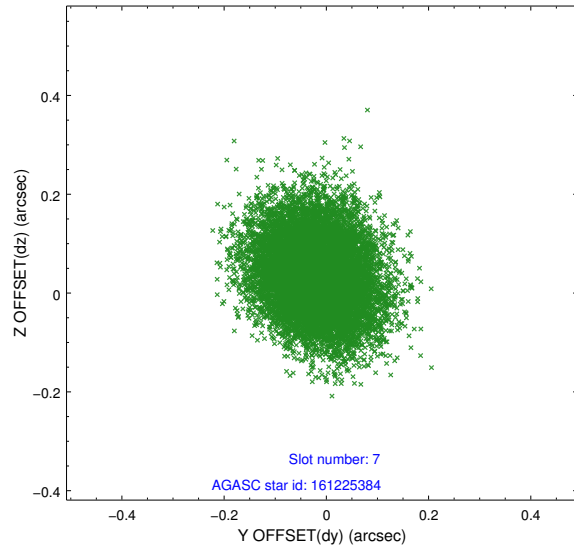
2.4.3 Slot 5



2.4.4 Slot 6

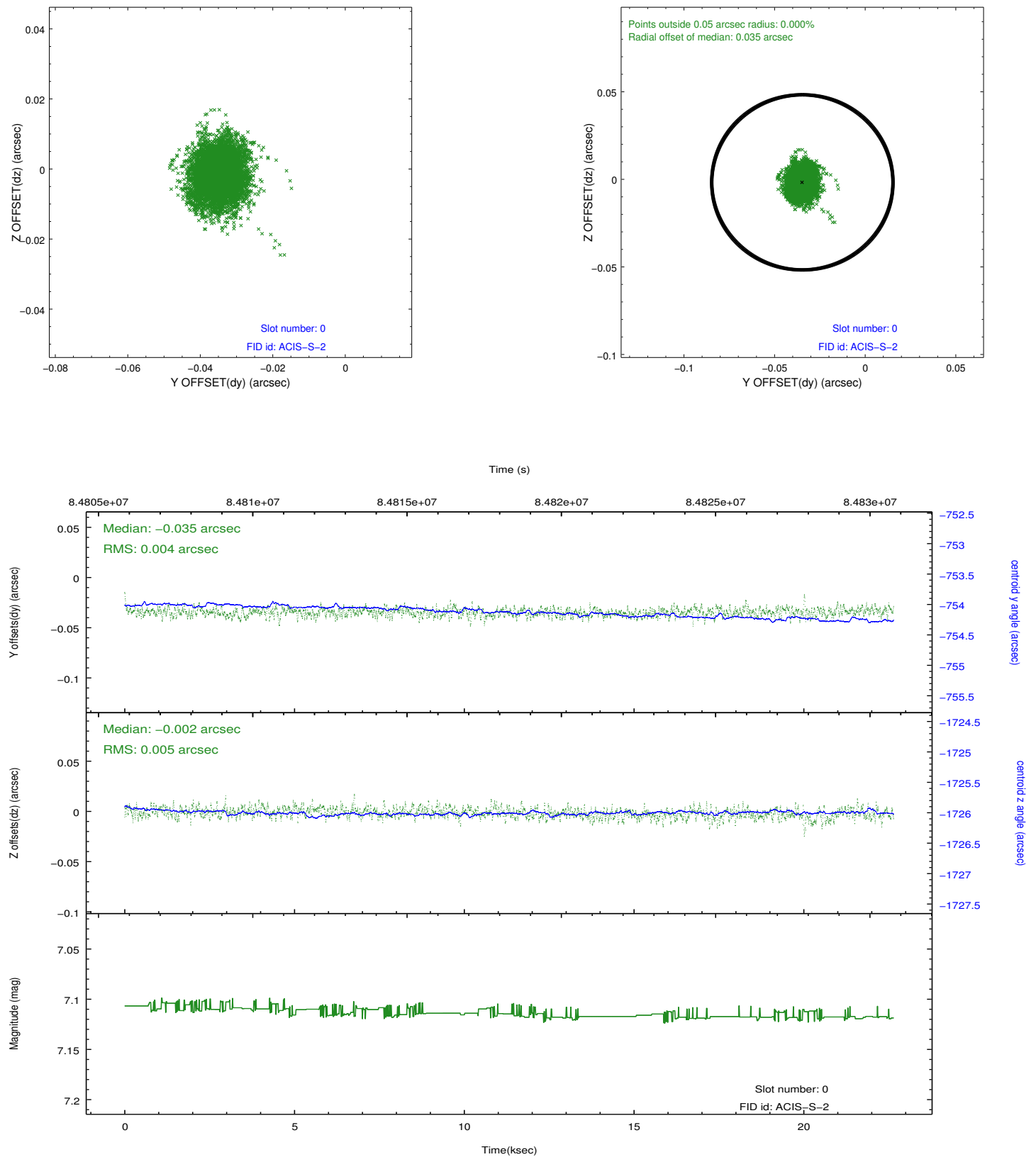


2.4.5 Slot 7

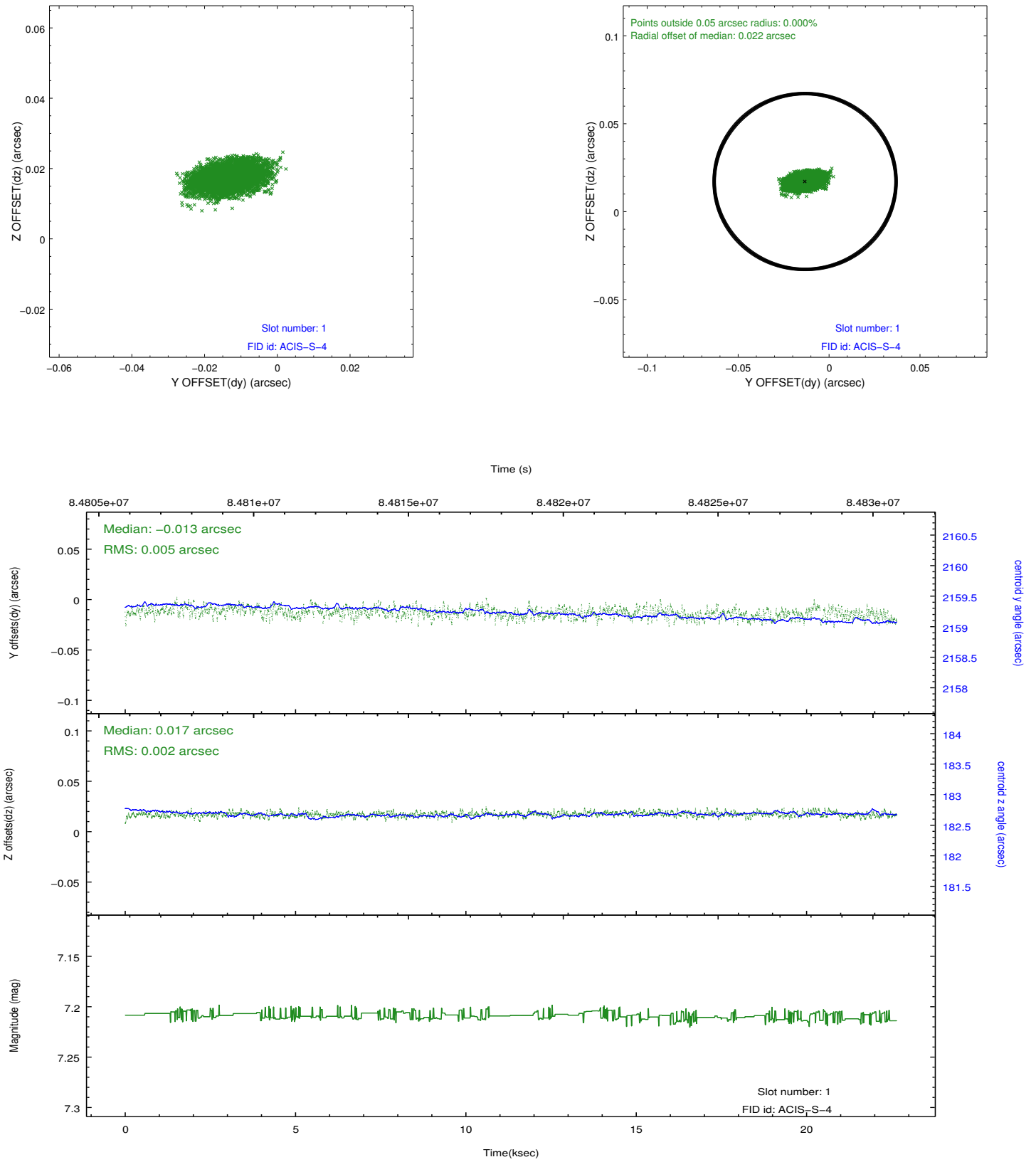


2.5 FID Slots

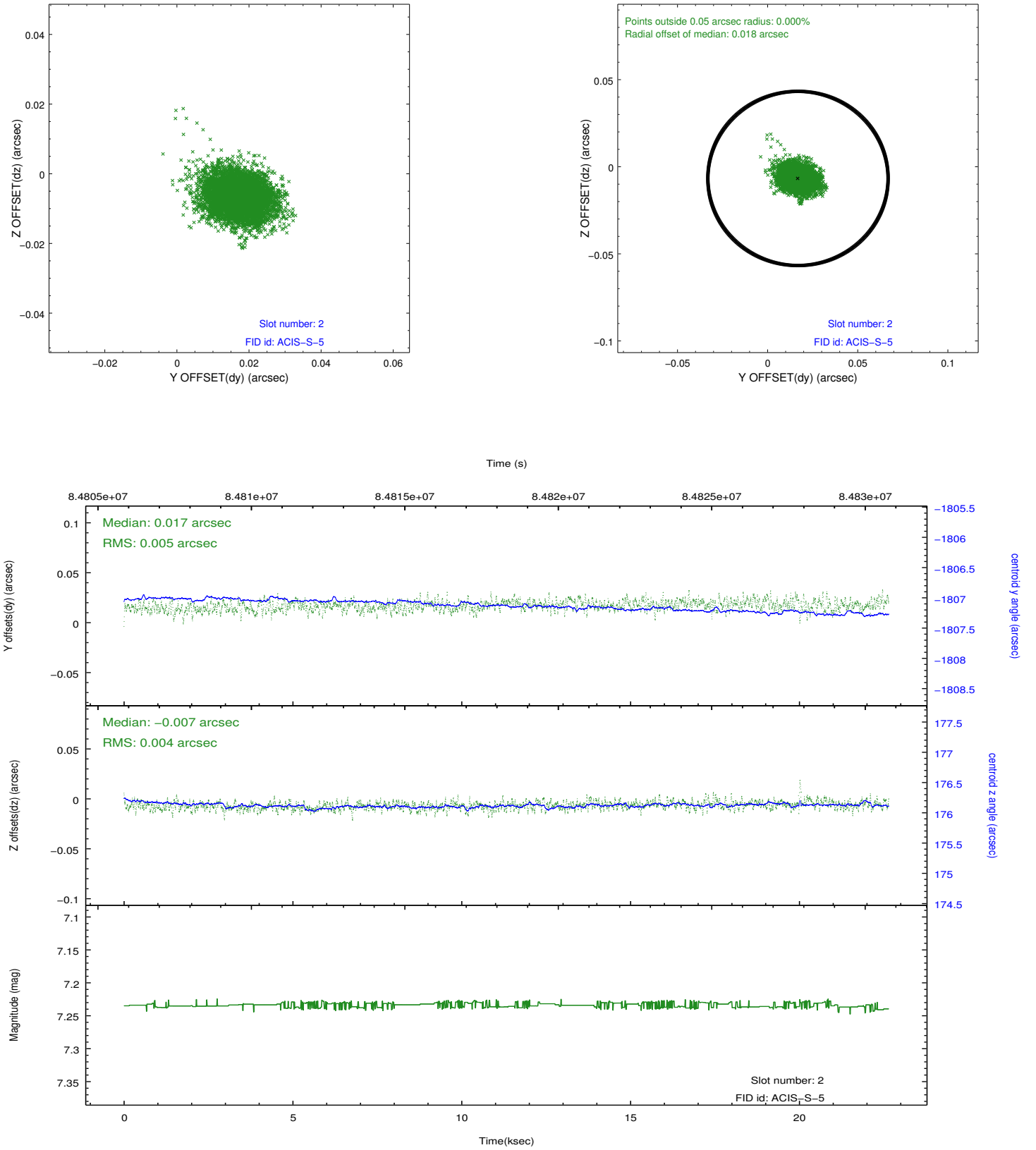
2.5.1 Slot 0



2.5.2 Slot 1



2.5.3 Slot 2



A Summary

A.1 Status

V&V Scientist	Jen Lauer
V&V Date (YYYY-MM-DD)	2012.09.10
V&V Edition	1
V&V Disposition and Status	OK
V&V Charge Time	22.652

A.2 Comments