

# V&V Reference Report

## L2 ASCDS Version : 8.4.4

Observation 9251 - L2 Version 2  
Chandra X-Ray Center

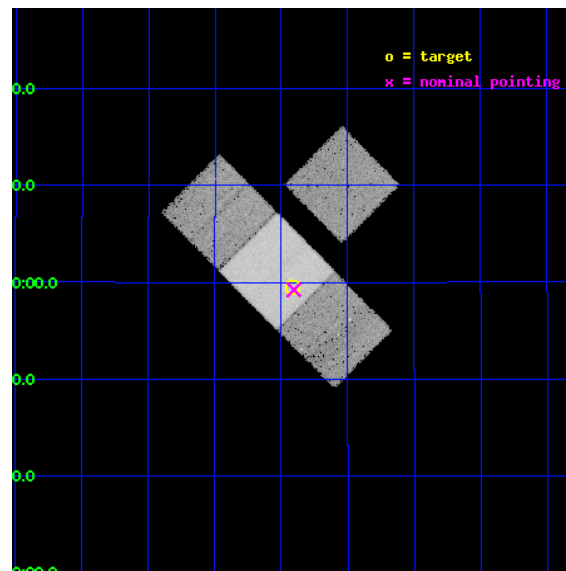
L2 Processing Date : May 11 2012

## Contents

<b>1</b>	<b>Front</b>	<b>2</b>
<b>2</b>	<b>OBI</b>	<b>3</b>
2.1	OBI . . . . .	3
2.1.1	Images . . . . .	3
2.1.2	Bias . . . . .	3
2.1.3	Parameters . . . . .	4
2.1.4	Events . . . . .	4
2.2	Compared Parameters . . . . .	5
2.3	Aspect . . . . .	6
2.4	Star Slots . . . . .	9
2.4.1	Slot 3 . . . . .	9
2.4.2	Slot 4 . . . . .	10
2.4.3	Slot 5 . . . . .	11
2.4.4	Slot 6 . . . . .	12
2.4.5	Slot 7 . . . . .	13
2.5	FID Slots . . . . .	14
2.5.1	Slot 0 . . . . .	14
2.5.2	Slot 1 . . . . .	15
2.5.3	Slot 2 . . . . .	16
<b>A</b>	<b>Summary</b>	<b>17</b>
A.1	Status . . . . .	17
A.2	Comments . . . . .	17

# 1 Front

seq_num	701692	Sequence number
obs_id	9251	Observation id
title	Orientation effects in the X-ray and multi-wavelength properties of high-z, 3CRR quasars.	Proposal title
observer	Dr. Belinda Wilkes	Principal investigator
object	3CRR 241	Source name
dtcycle	0	&#160
cycle	P	events from which exps? Prim/Second/Both
ra_targ	155.4775	Observer's specified target RA [deg]
dec_targ	21.991889	Observer's specified target Dec [deg]
ra_nom	155.47631952216	Nominal RA [deg]
dec_nom	21.987179666217	Nominal Dec [deg]
roll_nom	225.16828211143	Nominal Roll [deg]
revision	2	Processing version of data
ontime	19179.70014751	Sum of GTIs [s]
livetime	18929.103245193	Livetime [s]
ontime3	19179.70014751	Sum of GTIs [s]
ontime6	19179.70014751	Sum of GTIs [s]
ontime7	19179.70014751	Sum of GTIs [s]
ontime8	19179.70014751	Sum of GTIs [s]
l2events	162570	Number of level 2 events

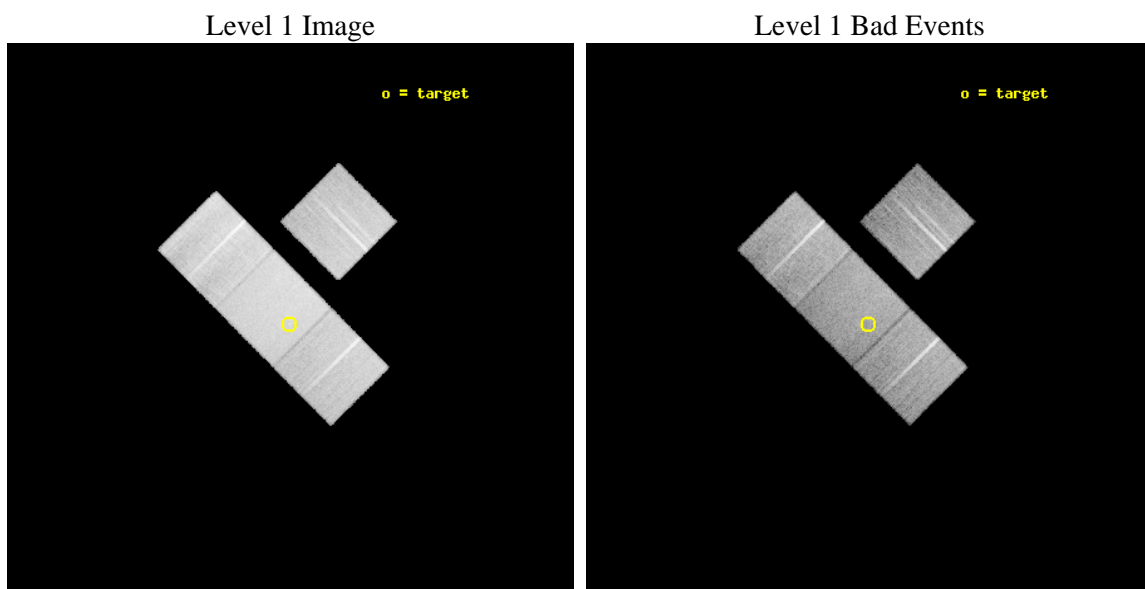




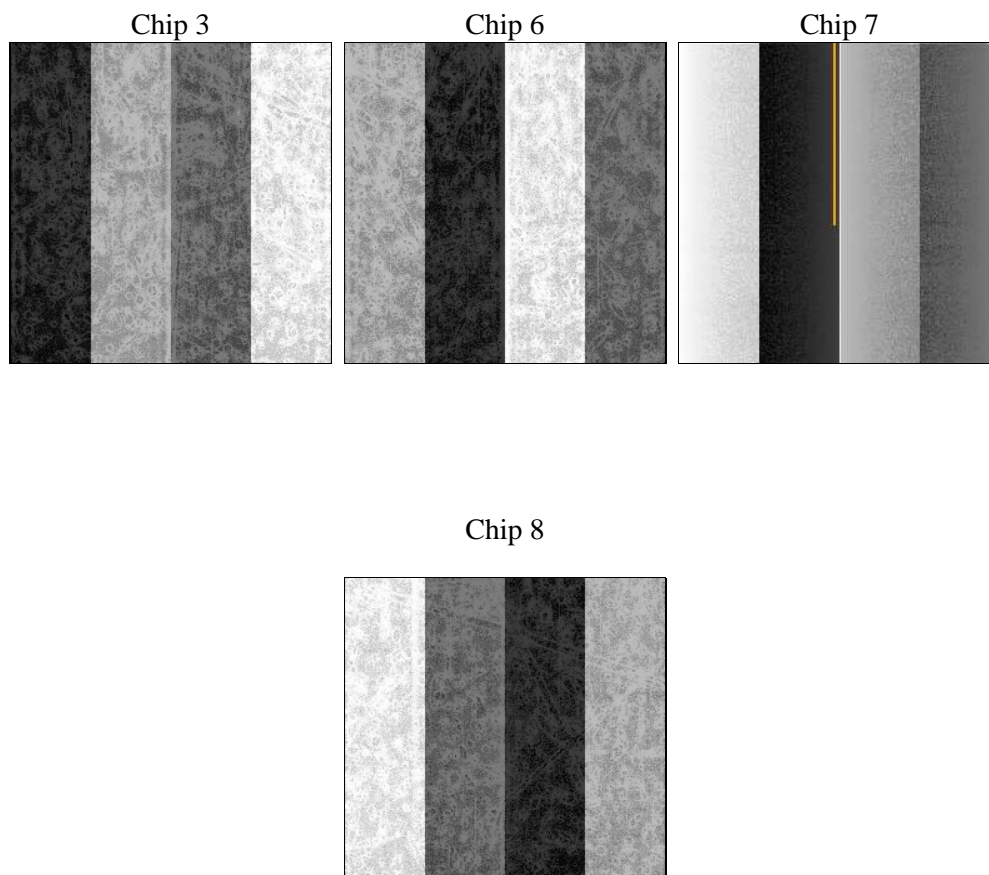
## 2 OBI

### 2.1 OBI

#### 2.1.1 Images



#### 2.1.2 Bias



### 2.1.3 Parameters

obi_num	0	Obi number	sched_exp_time	19000.000000	[s] Scheduled observation exposure time
ascdsver	8.4.4	Processing system revision	ontime	19179.70014751	Sum of GTIs [s]
caldsver	4.4.9	&#160	ontime3	19179.70014751	Sum of GTIs [s]
date	2012-05-11T13:02:34	Date and time of file creation	ontime6	19179.70014751	Sum of GTIs [s]
revision	2	Processing version of data	ontime7	19179.70014751	Sum of GTIs [s]
			ontime8	19179.70014751	Sum of GTIs [s]
			l1events	856976	Number of level 1 events

### 2.1.4 Events

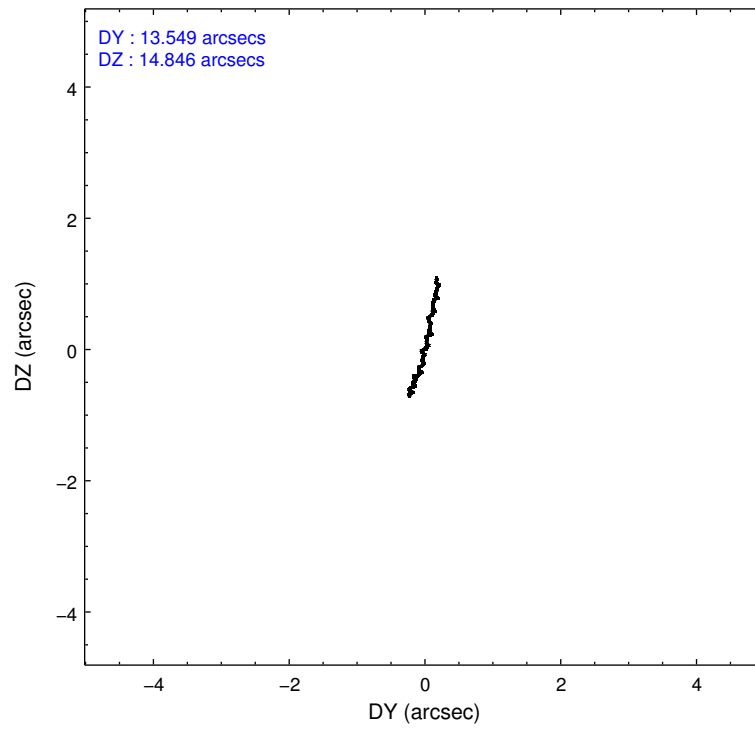
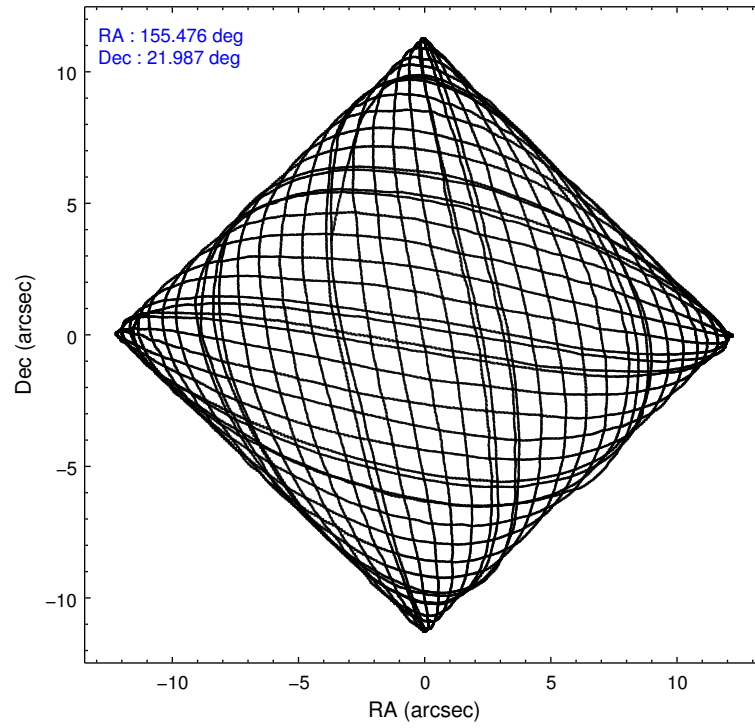
	ccd 3	ccd 6	ccd 7	ccd 8
level 1 events	178562	182868	255580	239966
rejected events	157201	160553	151679	186177
rejected %	88%	87%	59%	77%

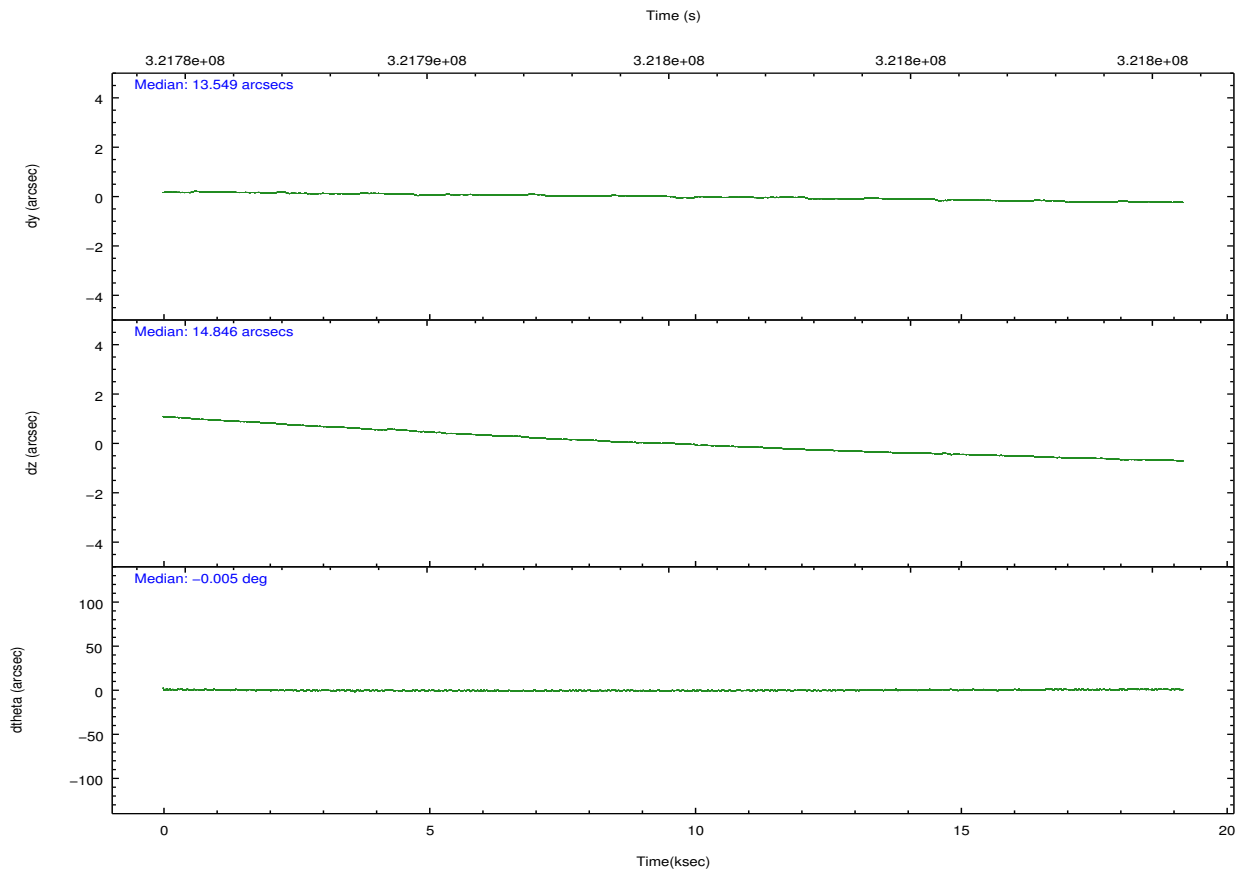
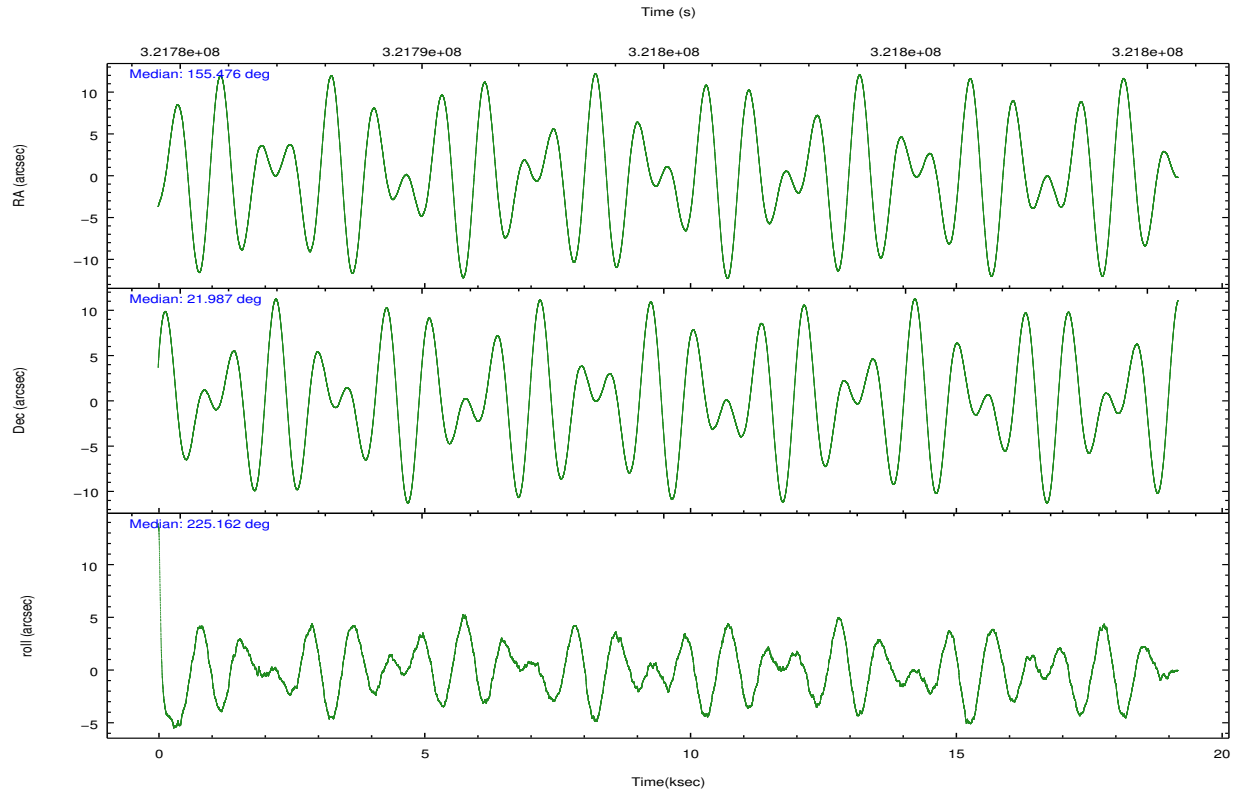
	ccd 3	ccd 6	ccd 7	ccd 8
grade 0 events	9315	8968	8834	17069
	5%	4%	3%	7%
grade 1 events	118	96	265	185
	0%	0%	0%	0%
grade 2 events	4322	4884	21607	12223
	2%	2%	8%	5%
grade 3 events	2058	2156	8768	5755
	1%	1%	3%	2%
grade 4 events	2013	2083	8950	5534
	1%	1%	3%	2%
grade 5 events	8756	8989	24093	11666
	4%	4%	9%	4%
grade 6 events	4072	4685	57761	14290
	2%	2%	22%	5%
grade 7 events	147908	151007	125302	173244
	82%	82%	49%	72%

## 2.2 Compared Parameters

Parameter	Planned	Actual	Parameter	Planned	Actual
Instrument	ACIS	ACIS	Obspar format version number	7	7
Detector	ACIS-3678	ACIS-3678	Obspar file type	PREDICTED	ACTUAL
Grating	NONE	NONE	Obspar update status	NONE	UPDATED
Data mode	FAINT	FAINT	CCD I0 on	N	N
Observation mode	POINTING	POINTING	CCD I1 on	N	N
[deg] Pointing RA	155.483466	155.4763195221614	CCD I2 on	N	N
[deg] Pointing Dec	22.013695	21.98717966621658	CCD I3 on	O1	Y
[deg] Pointing Roll	225.008979	225.1682821114318	CCD S0 on	N	N
[mm] SIM focus pos	-0.684267	-0.6828225247311905	CCD S1 on	N	N
[mm] SIM defocus	0	0.001444936568705701	CCD S2 on	O3	Y
[mm] SIM translation stage pos	-190.132523	-190.1425803651734	CCD S3 on	Y	Y
[mm] SIM translation stage offset	0	0.01005778216563158	CCD S4 on	O2	Y
[s] Observation start time (MET)	321785673.184000	321784554.21869	CCD S5 on	N	N
Observation start date	2008-03-13T08:53:28	2008-03-13T08:35:54	Number of optional ACIS chips dropped	0	0
[s] Observation end time (MET)	321804673.184000	321805938.28223	On-chip summing requested	N	N
Observation end date	2008-03-13T14:10:08	2008-03-13T14:32:18	Subarray requested	NONE	NONE
Read mode	TIMED	TIMED	Alternating exposures requested	N	N
			[s] Primary exposure time	0.000000	3.1

## 2.3 Aspect



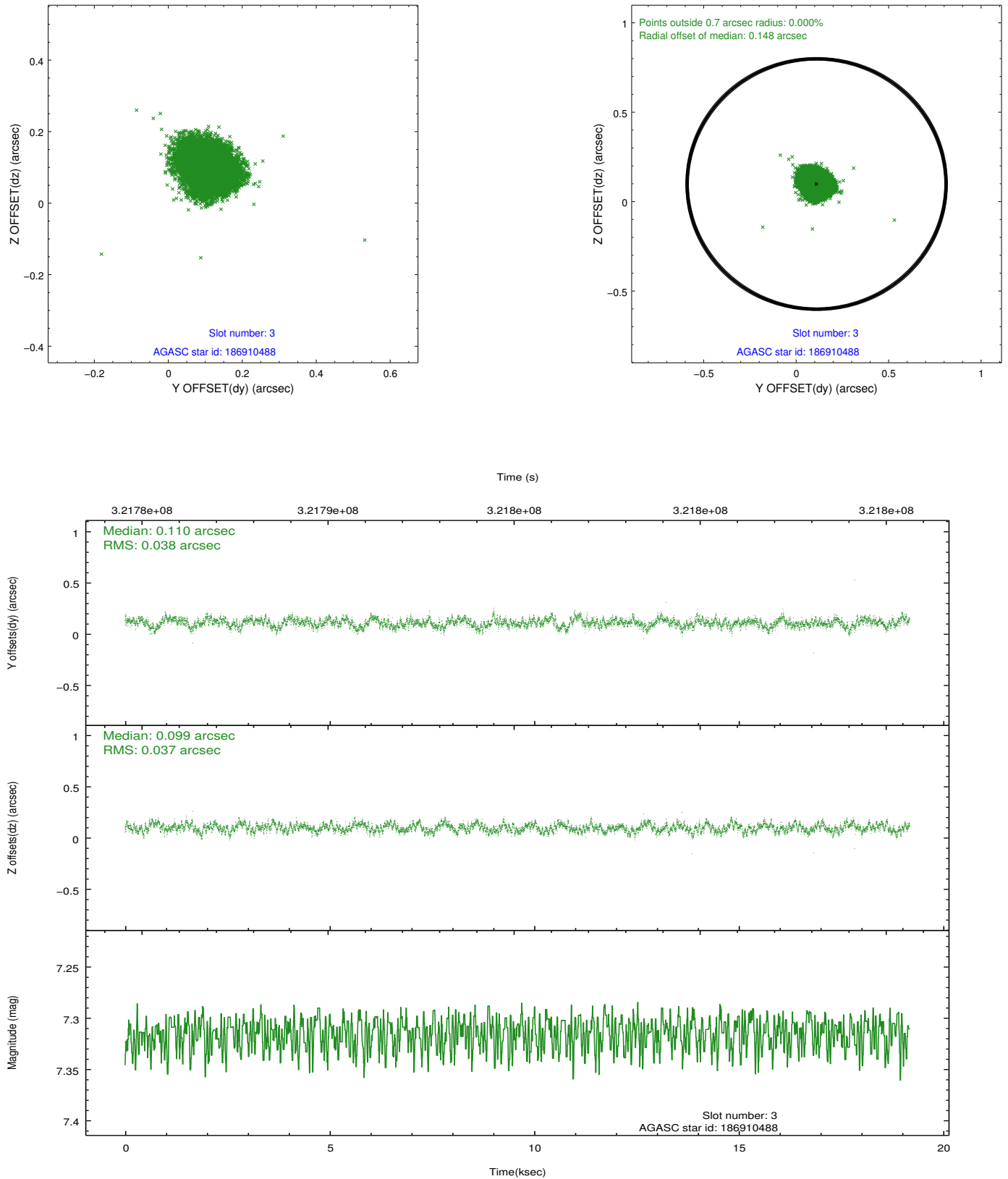


### Slot Statistics

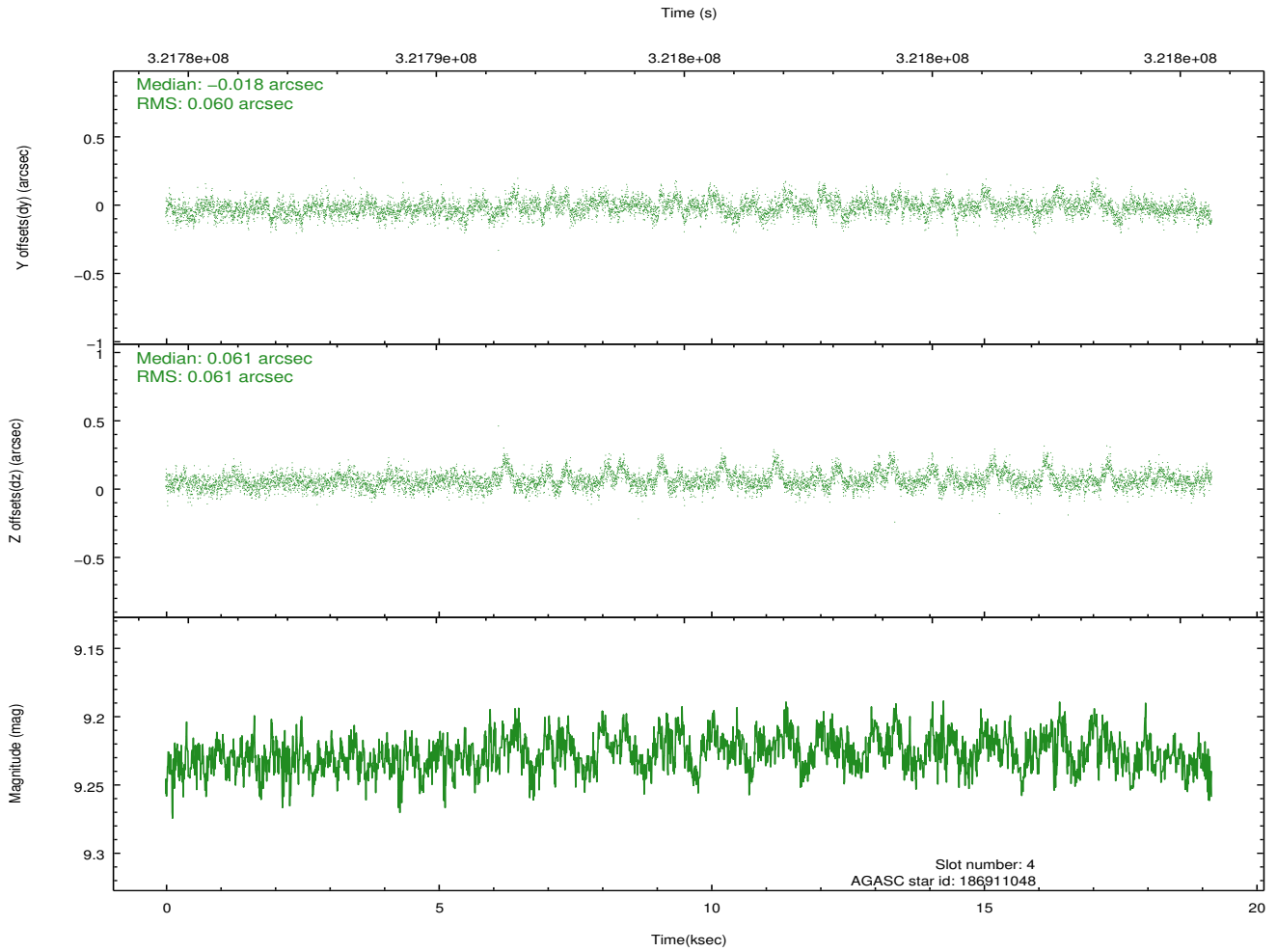
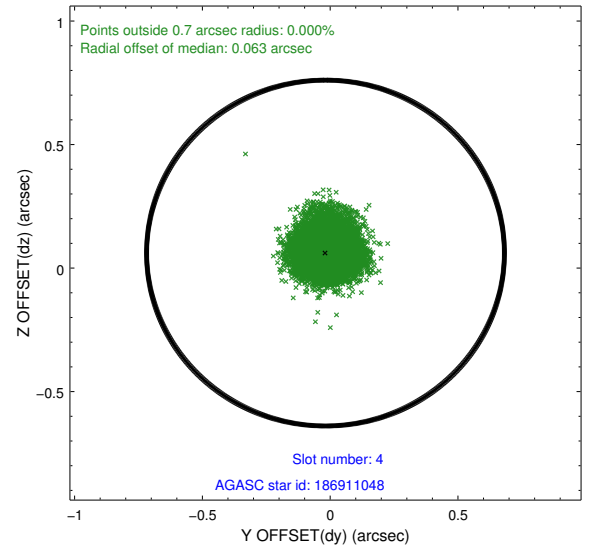
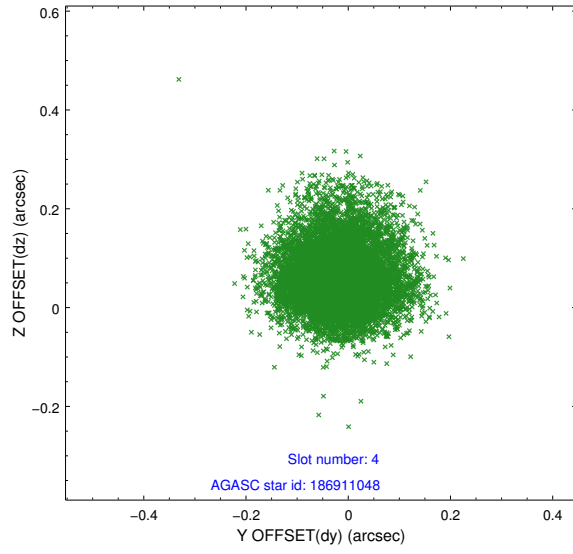
slot	status	id	mag	n_pts	med_dy	med_dz	dr1	dr2	ra	dec	mean_y	mean_z
0	FID	ACIS-S-2	7.10	4679	-0.063	-0.042	0.013	0.021	0.000000	0.000000	-766.50	-1736.27
1	FID	ACIS-S-4	7.19	4679	0.189	0.041	0.010	0.019	0.000000	0.000000	2146.90	172.12
2	FID	ACIS-S-5	7.22	4679	-0.157	0.008	0.012	0.019	0.000000	0.000000	-1819.21	165.93
3	GUIDE	186910488	7.31	9359	0.110	0.099	0.057	0.090	155.064237	22.011425	994.25	-984.75
4	GUIDE	186911048	9.23	9349	-0.018	0.061	0.090	0.151	155.458376	21.346993	1757.63	1637.54
5	GUIDE	186911768	8.94	9350	-0.063	0.021	0.074	0.120	155.428348	21.393746	1709.78	1447.59
6	GUIDE	258080976	9.23	9350	-0.213	-0.004	0.084	0.135	155.433037	22.802813	-1890.05	-2126.78
7	GUIDE	186779304	7.62	9357	0.185	-0.178	0.073	0.133	154.495566	21.968561	2439.98	-2225.23

## 2.4 Star Slots

### 2.4.1 Slot 3

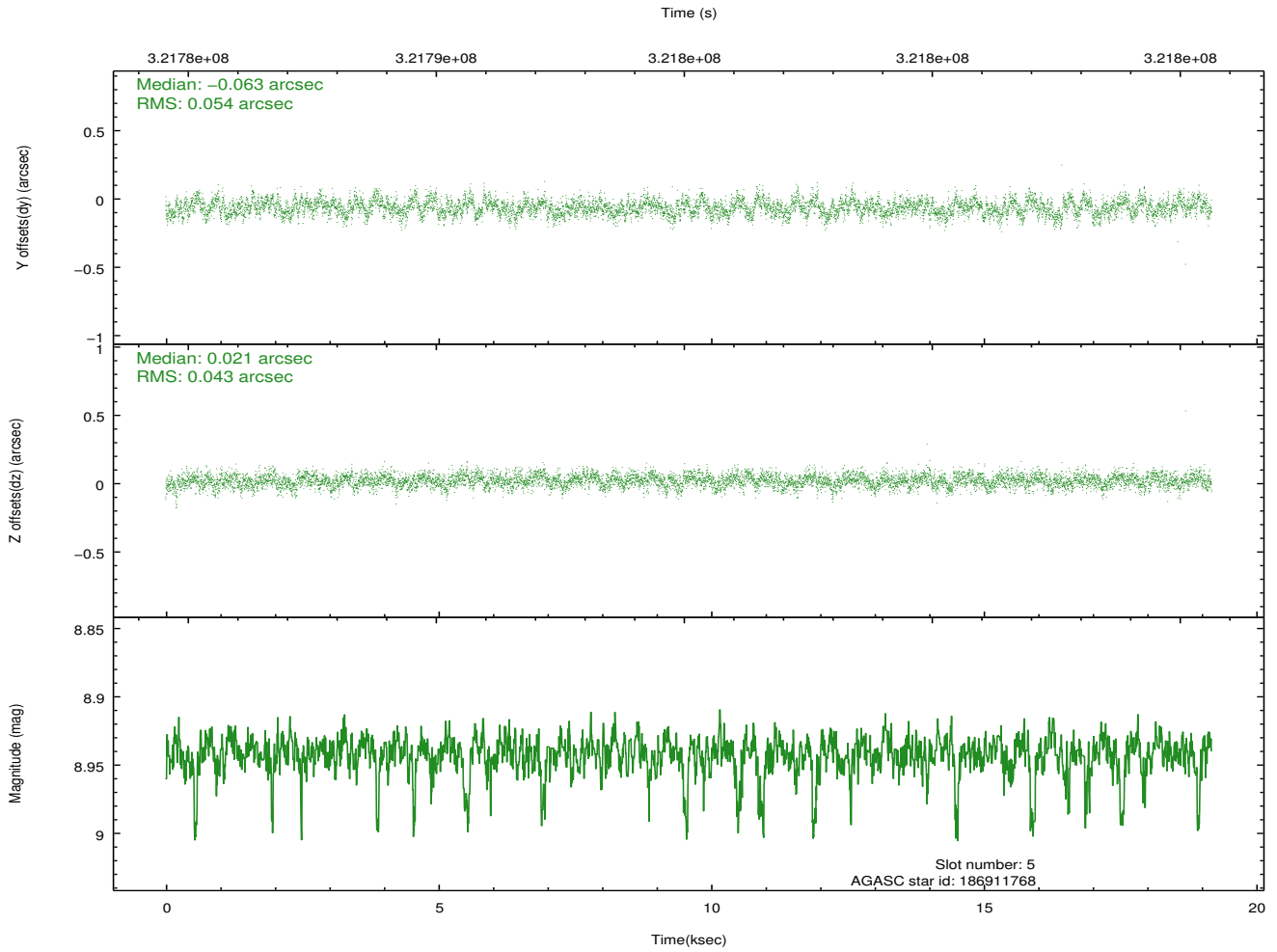
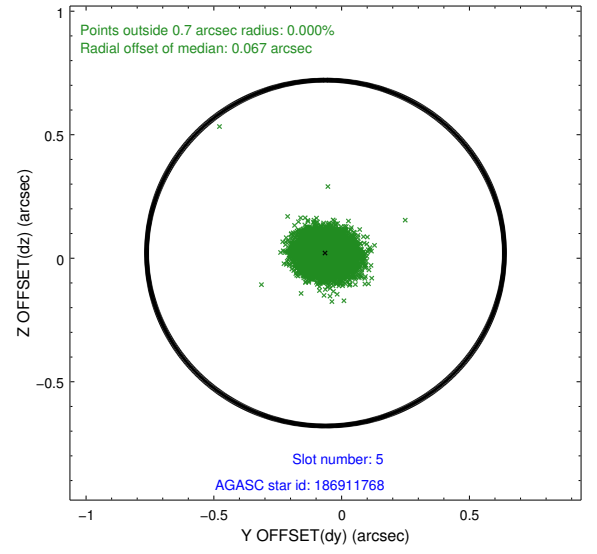
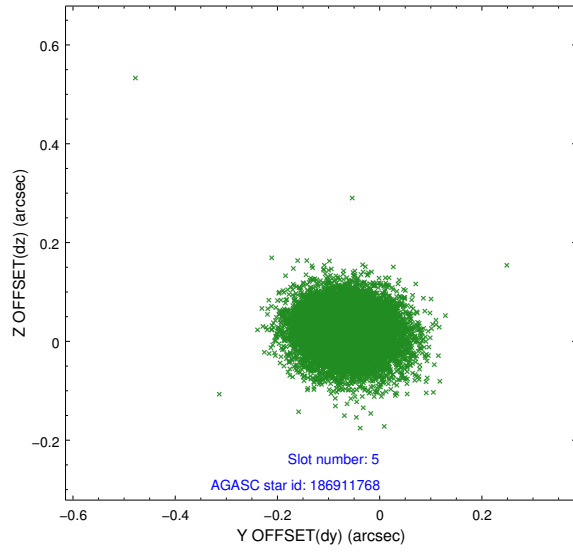


## 2.4.2 Slot 4

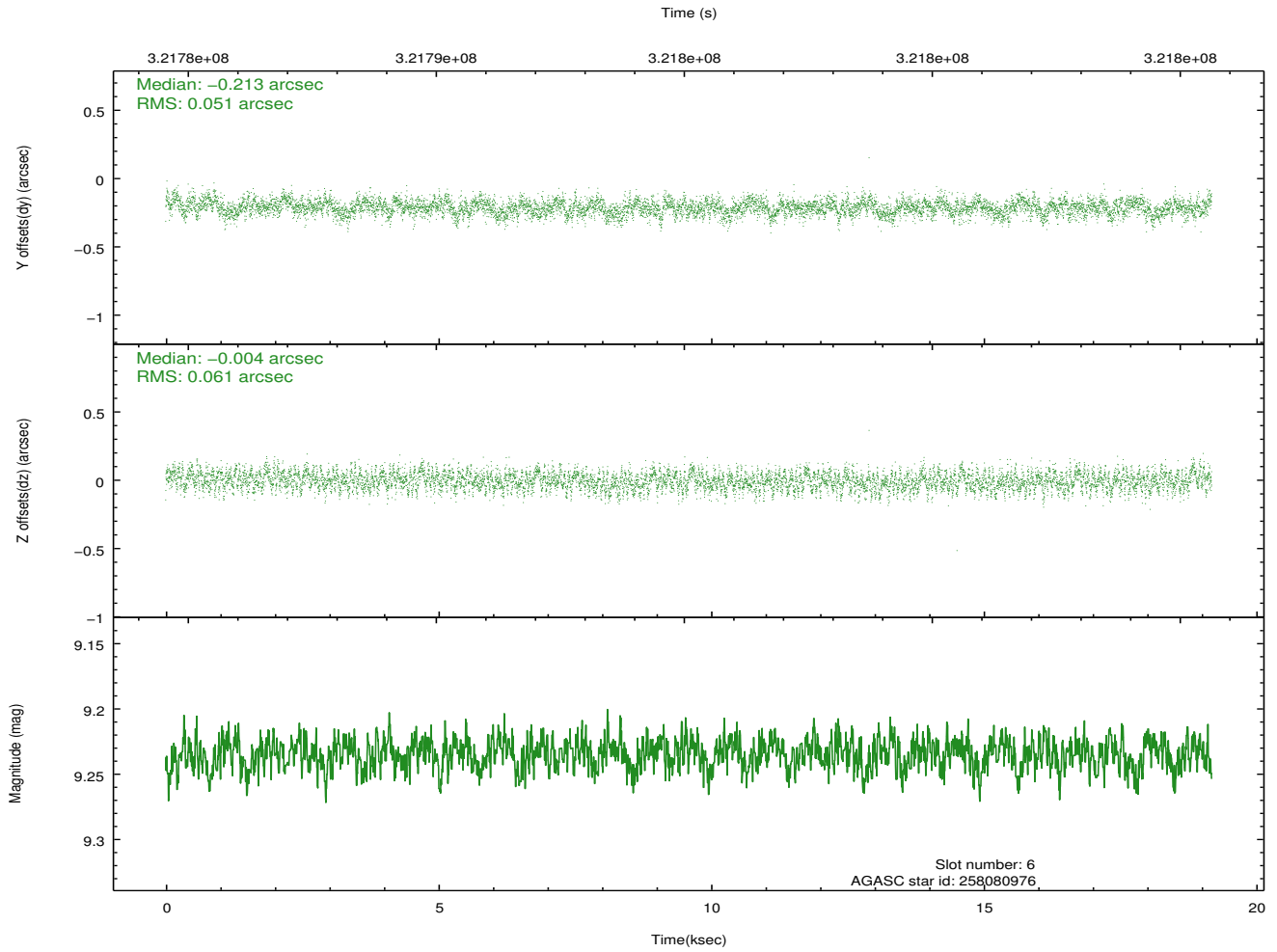
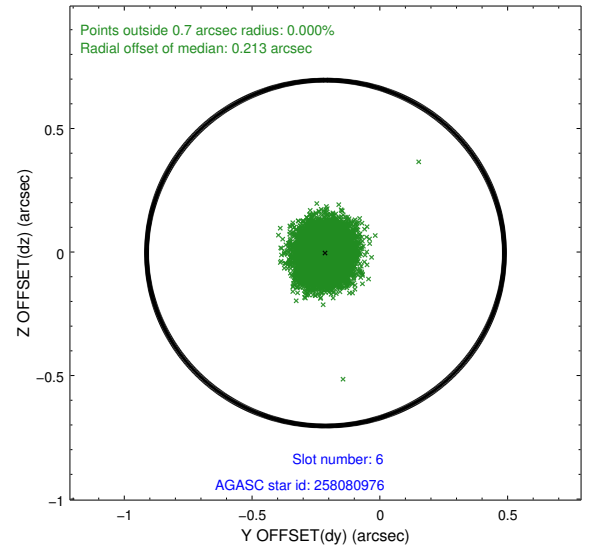
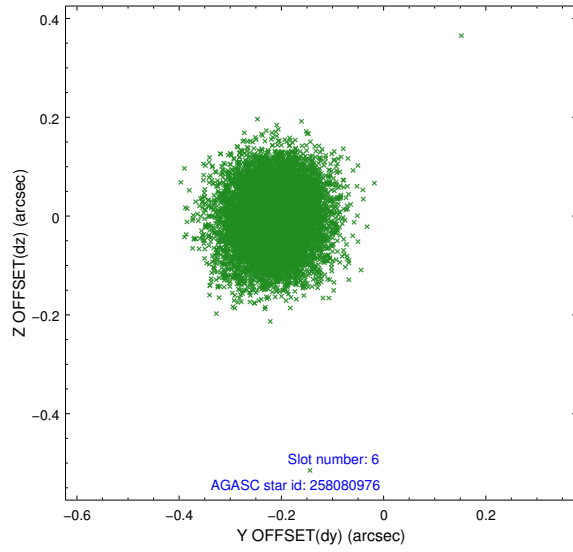




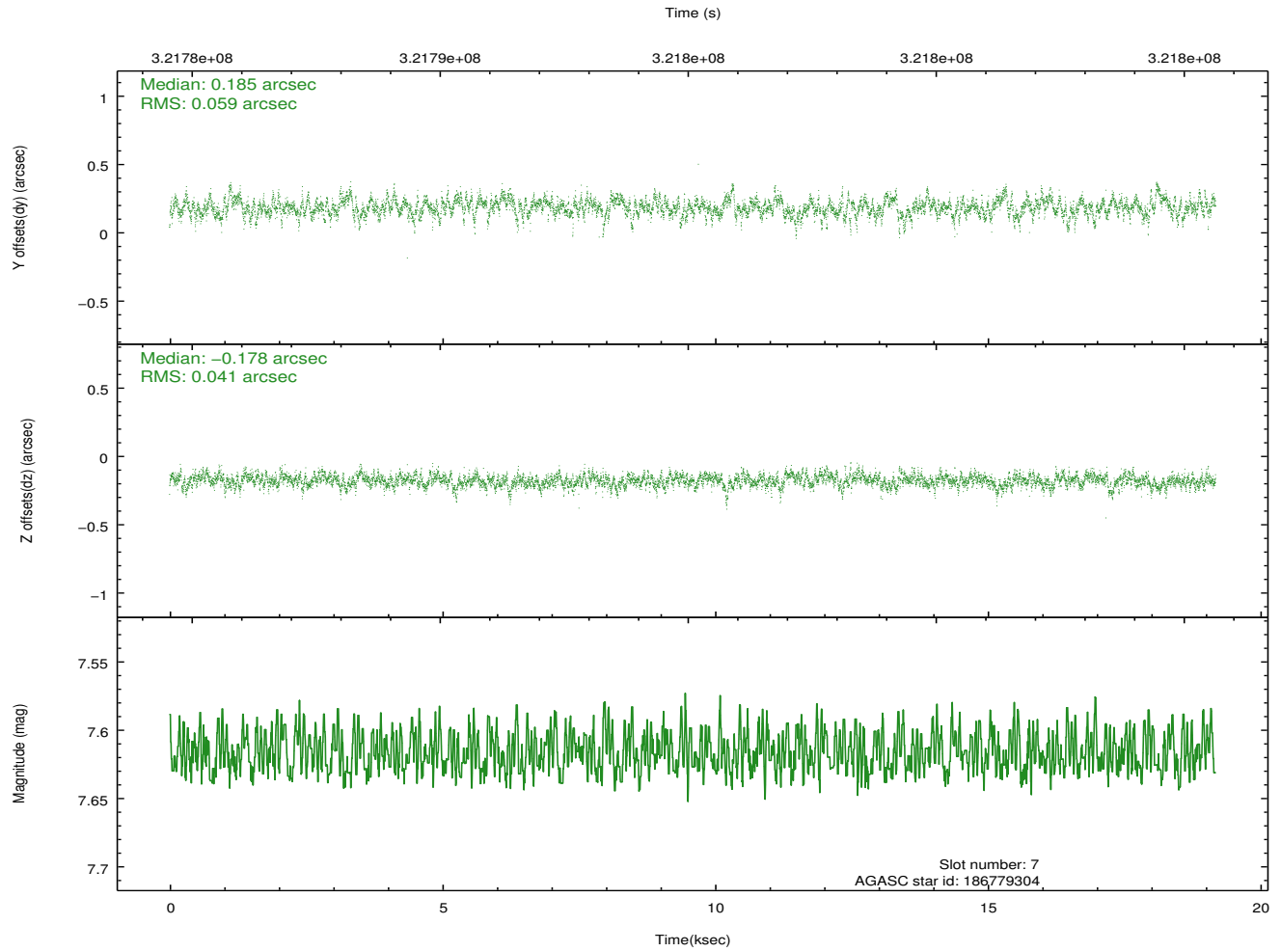
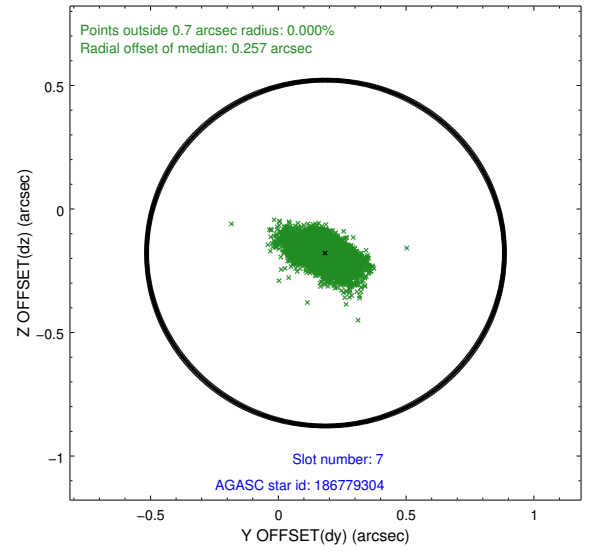
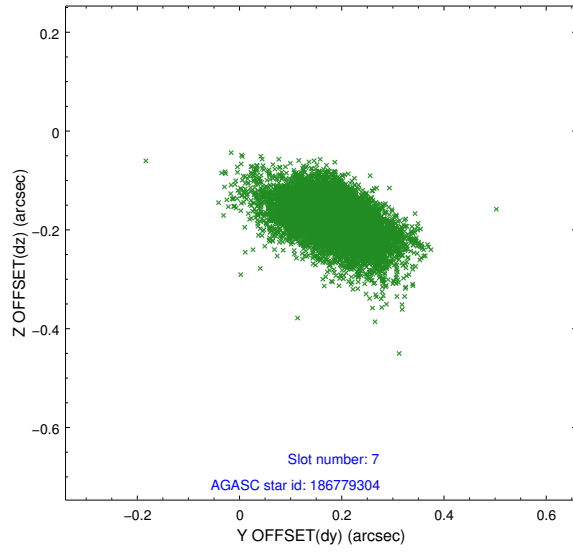
### 2.4.3 Slot 5



## 2.4.4 Slot 6

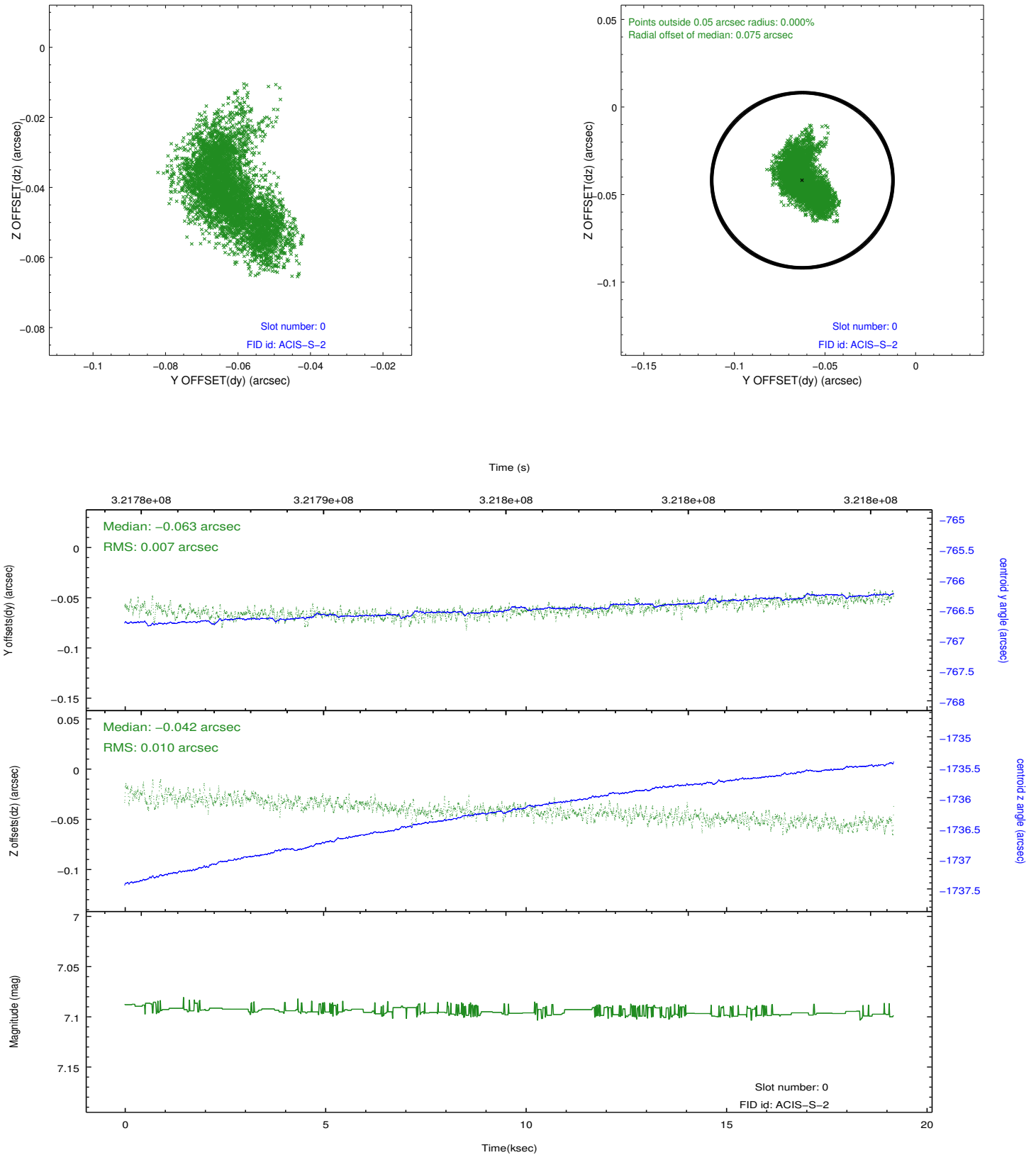


## 2.4.5 Slot 7

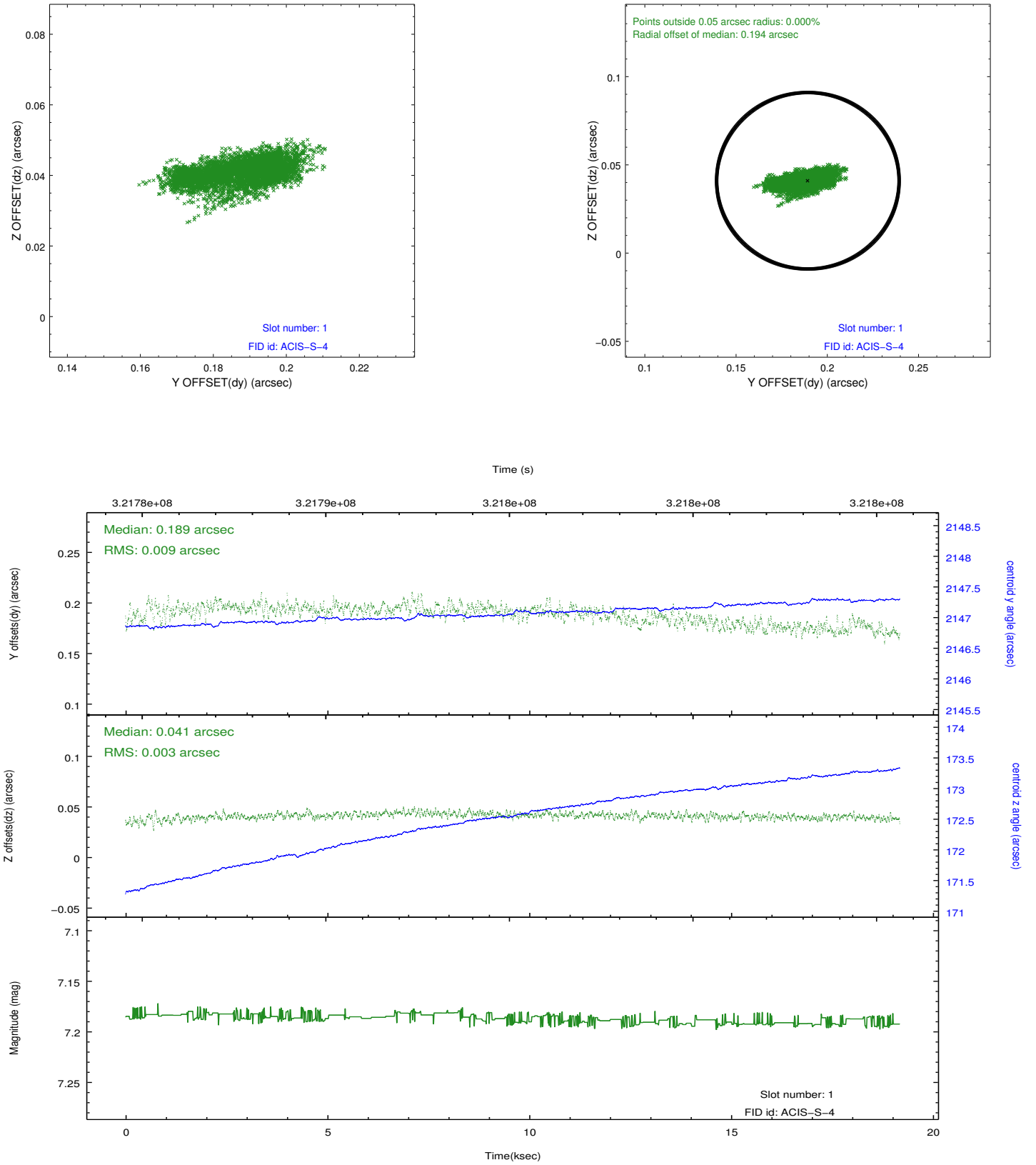


## 2.5 FID Slots

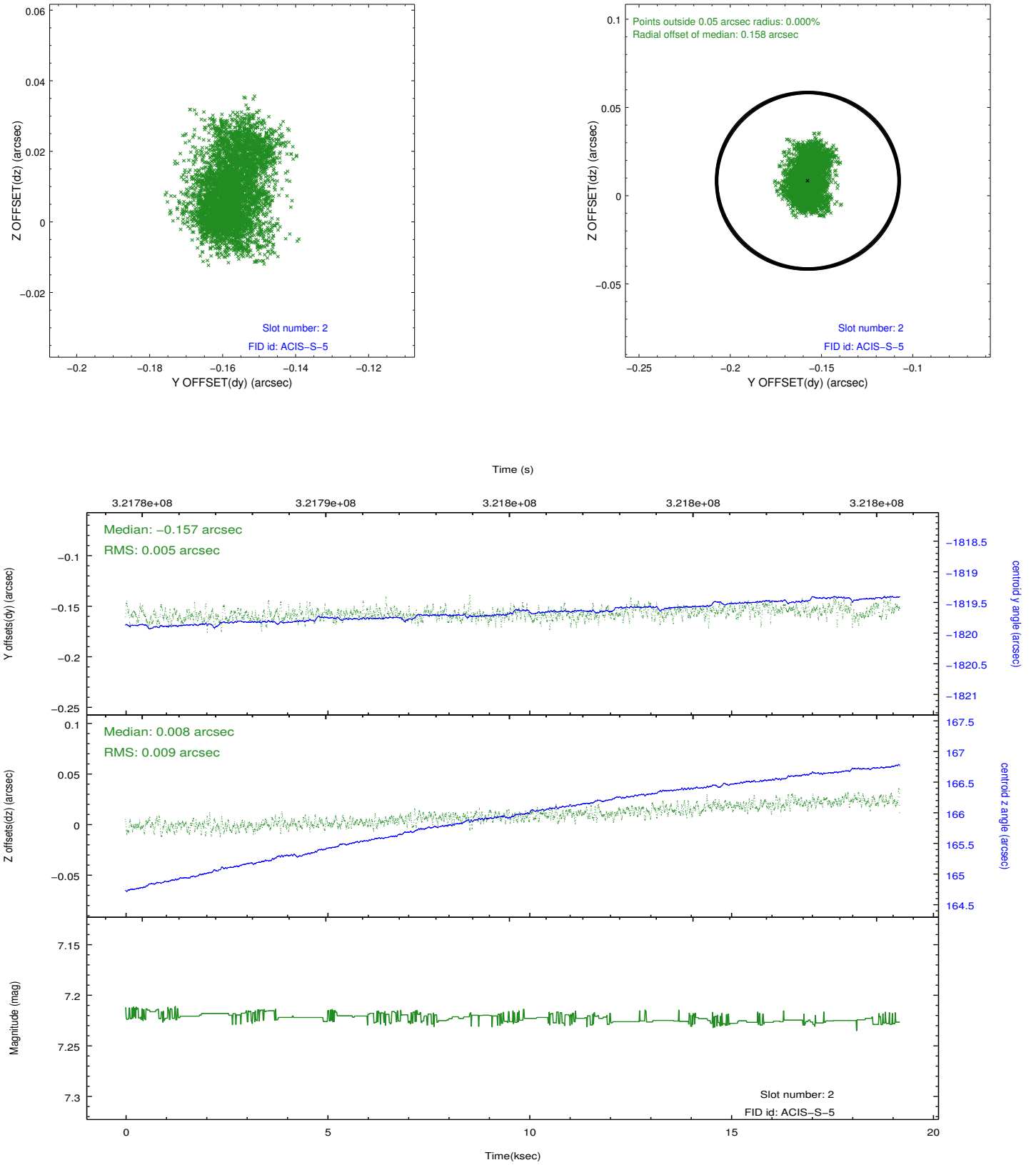
### 2.5.1 Slot 0



## 2.5.2 Slot 1



### 2.5.3 Slot 2



## A Summary

### A.1 Status

V&V Scientist	Jen Lauer
V&V Date (YYYY-MM-DD)	2012.05.14
V&V Edition	1
V&V Disposition and Status	OK
V&V Charge Time	19.1797001

### A.2 Comments