

V&V Reference Report

L2 ASCDS Version : 7.6.10

Observation 911 - L2 Version 001
Chandra X-Ray Center

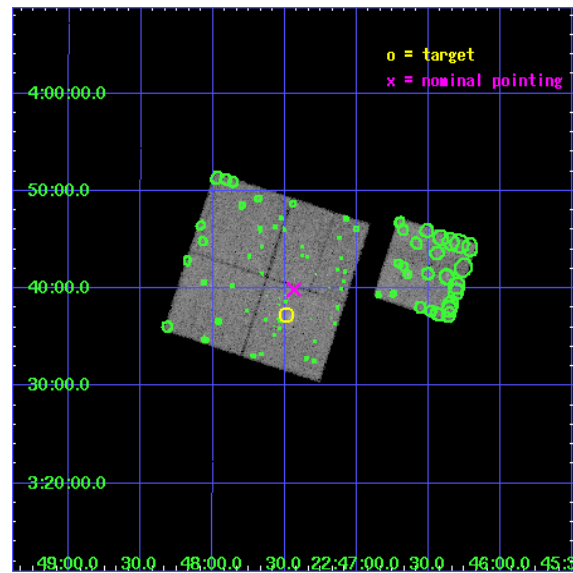
L2 Processing Date : May 19 2007

Contents

1	Front	2
2	OBI	3
2.1	OBI	3
2.1.1	Images	3
2.1.2	Bias	3
2.1.3	Parameters	4
2.1.4	Events	4
2.2	Compared Parameters	5
2.3	Aspect	6
2.4	Star Slots	9
2.4.1	Slot 3	9
2.4.2	Slot 4	10
2.4.3	Slot 5	11
2.4.4	Slot 6	12
2.4.5	Slot 7	13
2.5	FID Slots	14
2.5.1	Slot 0	14
2.5.2	Slot 1	15
2.5.3	Slot 2	16
3	Point Sources	17
A	Summary	18
A.1	Status	18
A.2	Comments	18

1 Front

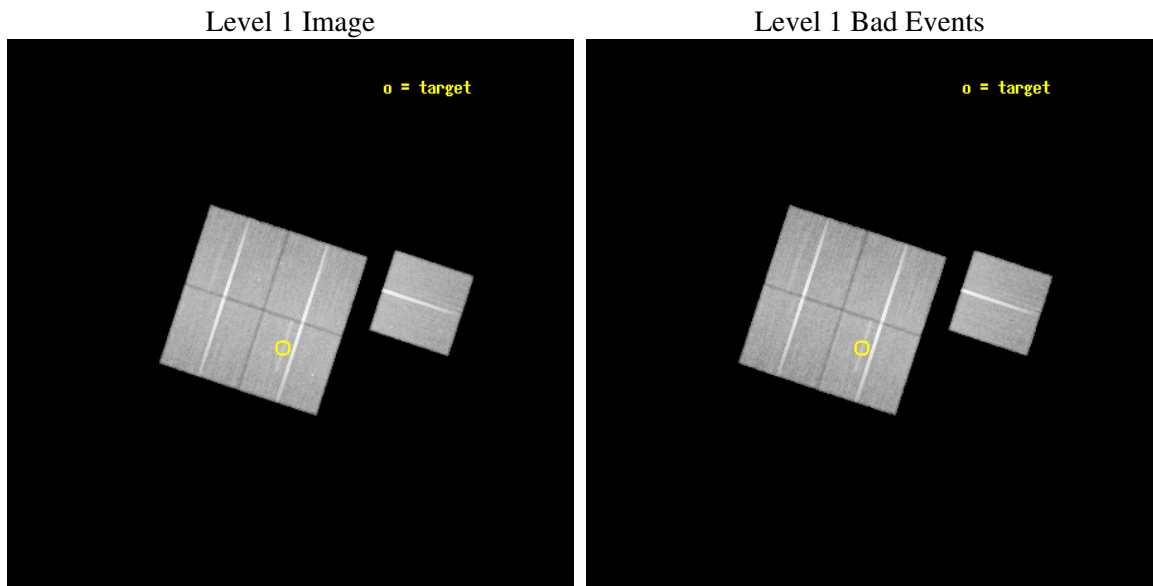
seq_num	800087
obs_id	911
title	STUDY OF A NEW CLASS OF MASS CONCENTRATIONS IN THE UNIVERSE
observer	Dr Alexey Vikhlinin
object	RX J2247+0337
dtcycle	0
cycle	P
ra_targ	341.87125
dec_targ	3.620278
ra_nom	341.85879326327
dec_nom	3.6648781555517
roll_nom	108.1942388587
revision	3
ontime	49593.55908595
livetime	48965.575579148
ontime0	49593.55908595
ontime1	49593.55908595
ontime2	49596.800046191
ontime3	49593.55908595
ontime6	49590.318125725
l2events	162069



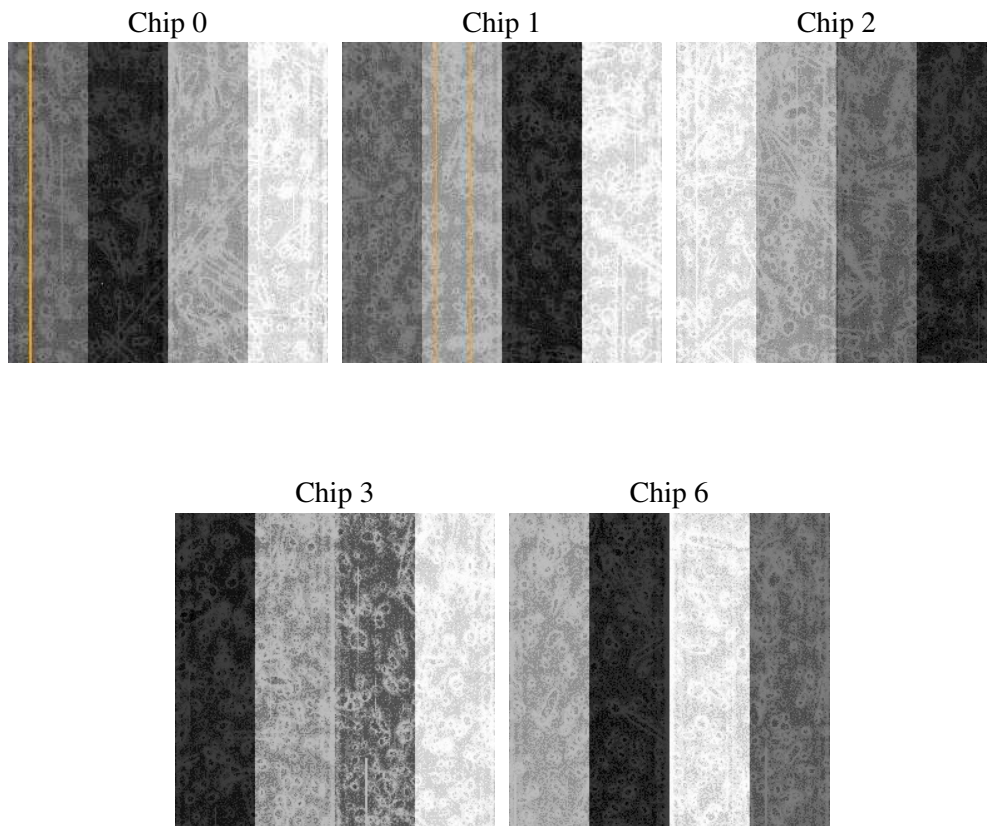
2 OBI

2.1 OBI

2.1.1 Images



2.1.2 Bias



2.1.3 Parameters

obi_num	0
ascdsver	7.6.10
caldbver	3.3.0
date	2007-05-19T09:28:29
revision	3

sched_exp_time	49531.244000
ontime	49593.55908595
ontime0	49593.55908595
ontime1	49593.55908595
ontime2	49596.800046191
ontime3	49593.55908595
ontime6	49590.318125725
l1events	1699212

2.1.4 Events

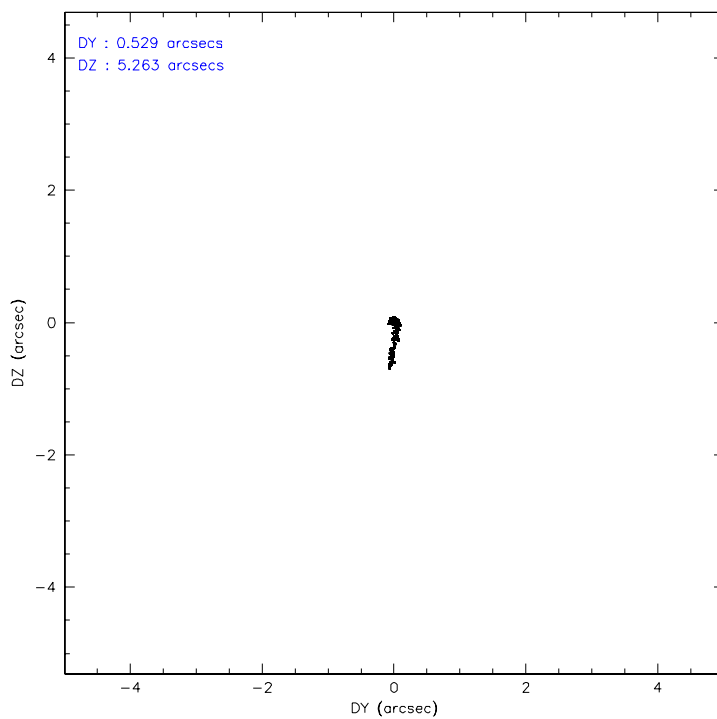
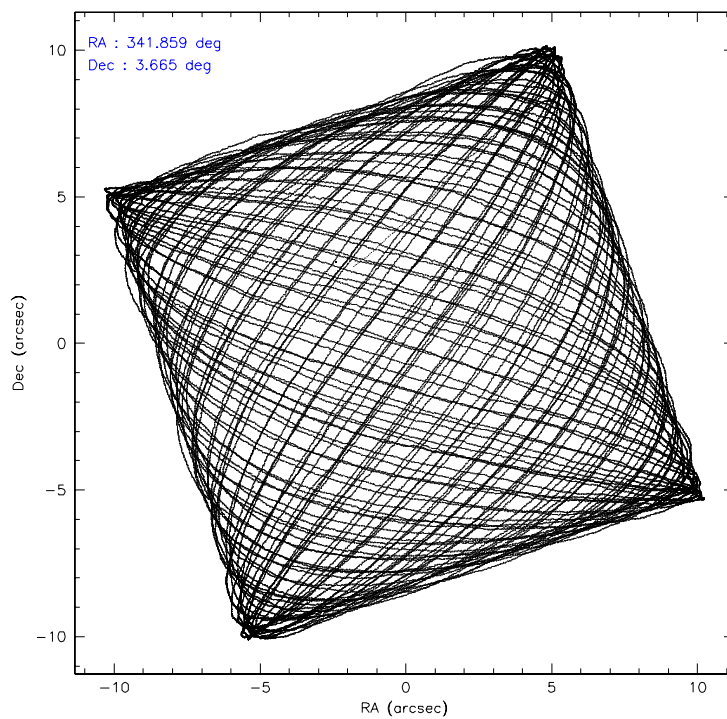
	ccd 0	ccd 1	ccd 2	ccd 3	ccd 6
level 1 events	319850	325598	350919	356382	346463
rejected events	281541	286283	313781	318000	309007
rejected %	88%	87%	89%	89%	89%

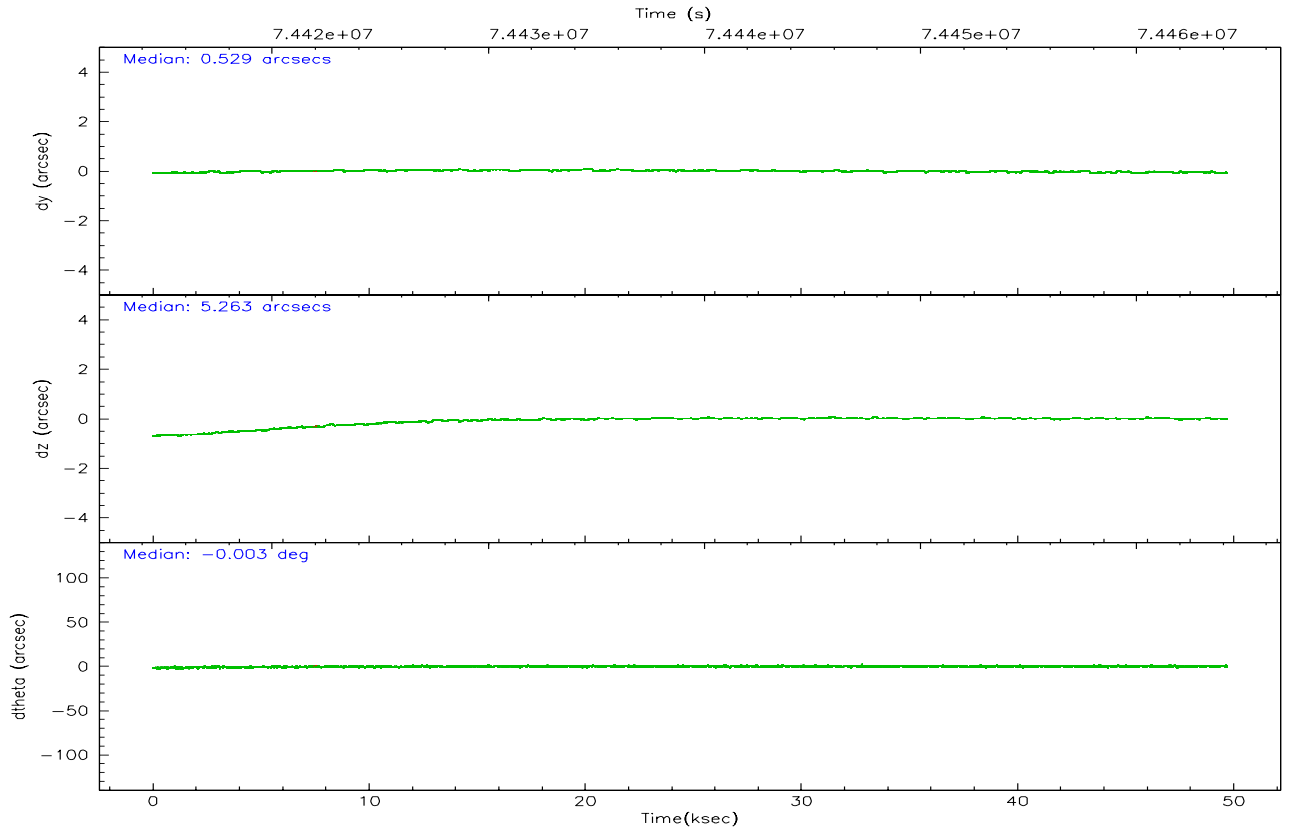
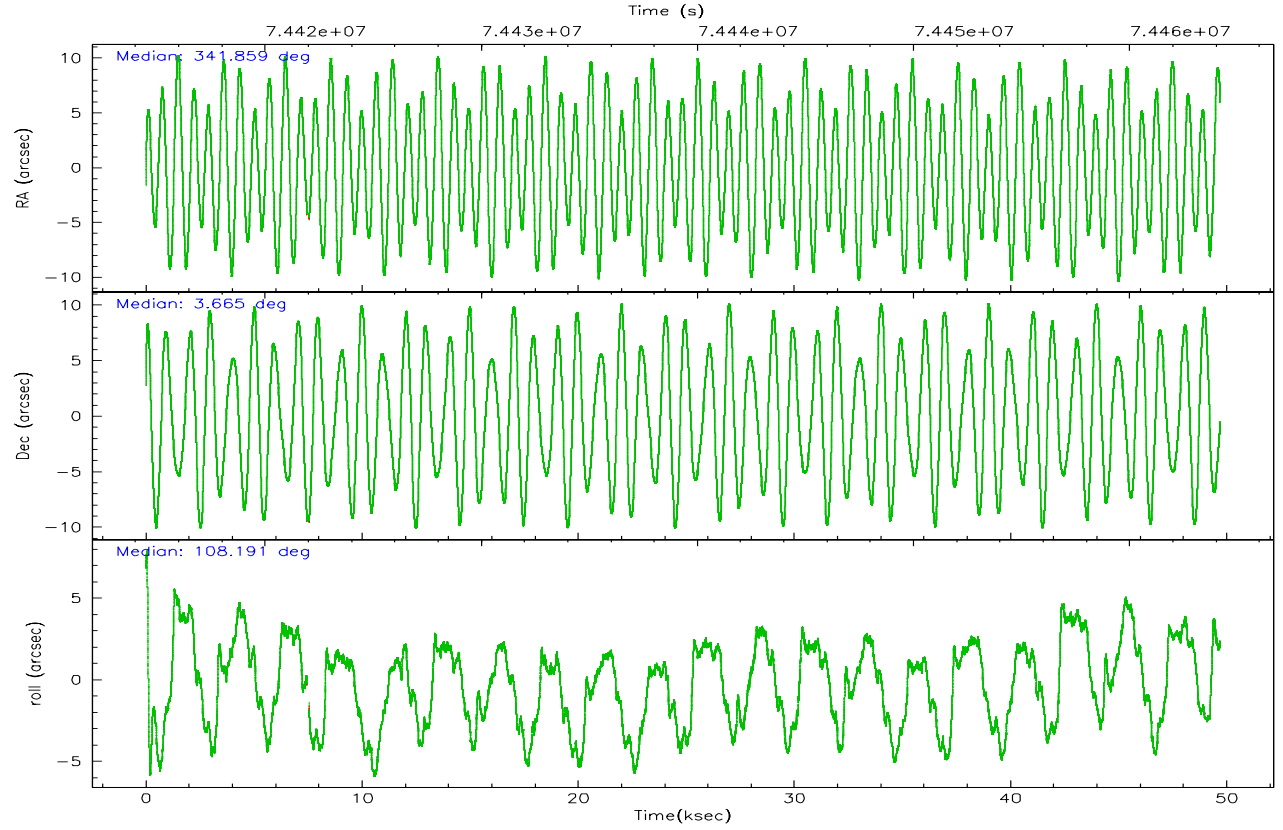
	ccd 0	ccd 1	ccd 2	ccd 3	ccd 6
grade 0 events	16796	16046	16571	17681	15658
	5%	4%	4%	4%	4%
grade 1 events	146	139	166	163	151
	0%	0%	0%	0%	0%
grade 2 events	7809	7768	7453	7145	7245
	2%	2%	2%	2%	2%
grade 3 events	3919	4280	3540	3621	3967
	1%	1%	1%	1%	1%
grade 4 events	3619	4289	3582	3634	3766
	1%	1%	1%	1%	1%
grade 5 events	10824	11878	10554	11919	12636
	3%	3%	3%	3%	3%
grade 6 events	6388	7162	6202	6515	7021
	1%	2%	1%	1%	2%
grade 7 events	270349	274036	302851	305704	296019
	84%	84%	86%	85%	85%

2.2 Compared Parameters

Parameter	Planned	Actual	Parameter	Planned	Actual
Instrument	ACIS	ACIS	Obspar format version number	6	6
Detector	ACIS-01236	ACIS-01236	Obspar file type	PREDICTED	ACTUAL
Grating	NONE	NONE	Obspar update status	NONE	UPDATED
Data mode	FAINT	FAINT	Number of optional ACIS chips dropped	0	0
Observation mode	POINTING	POINTING	On-chip summing requested	N	N
Pointing RA	341.879276	341.8587932632651	Subarray requested	NONE	NONE
Pointing Dec	3.646359	3.664878155551671	Alternating exposures requested	N	N
Pointing Roll	107.984250	108.1942388587003	Primary exposure time	3.200000	3.2
SIM focus pos (mm)	-0.782348	-0.7809083437167272			
SIM defocus (mm)	0	0.001439871863259334			
SIM translation stage pos (mm)	-226.092463	-226.0847176009736			
SIM translation stage offset (mm)	-7.5	-7.50773540195604			
Observation start time	74414663.184000	74413513.19092			
Observation start date	2000-05-11T06:43:19	2000-05-11T06:25:13			
Observation end time	74464195.184000	74464503.86779401			
Observation end date	2000-05-11T20:28:51	2000-05-11T20:35:03			
Read mode	TIMED	TIMED			

2.3 Aspect



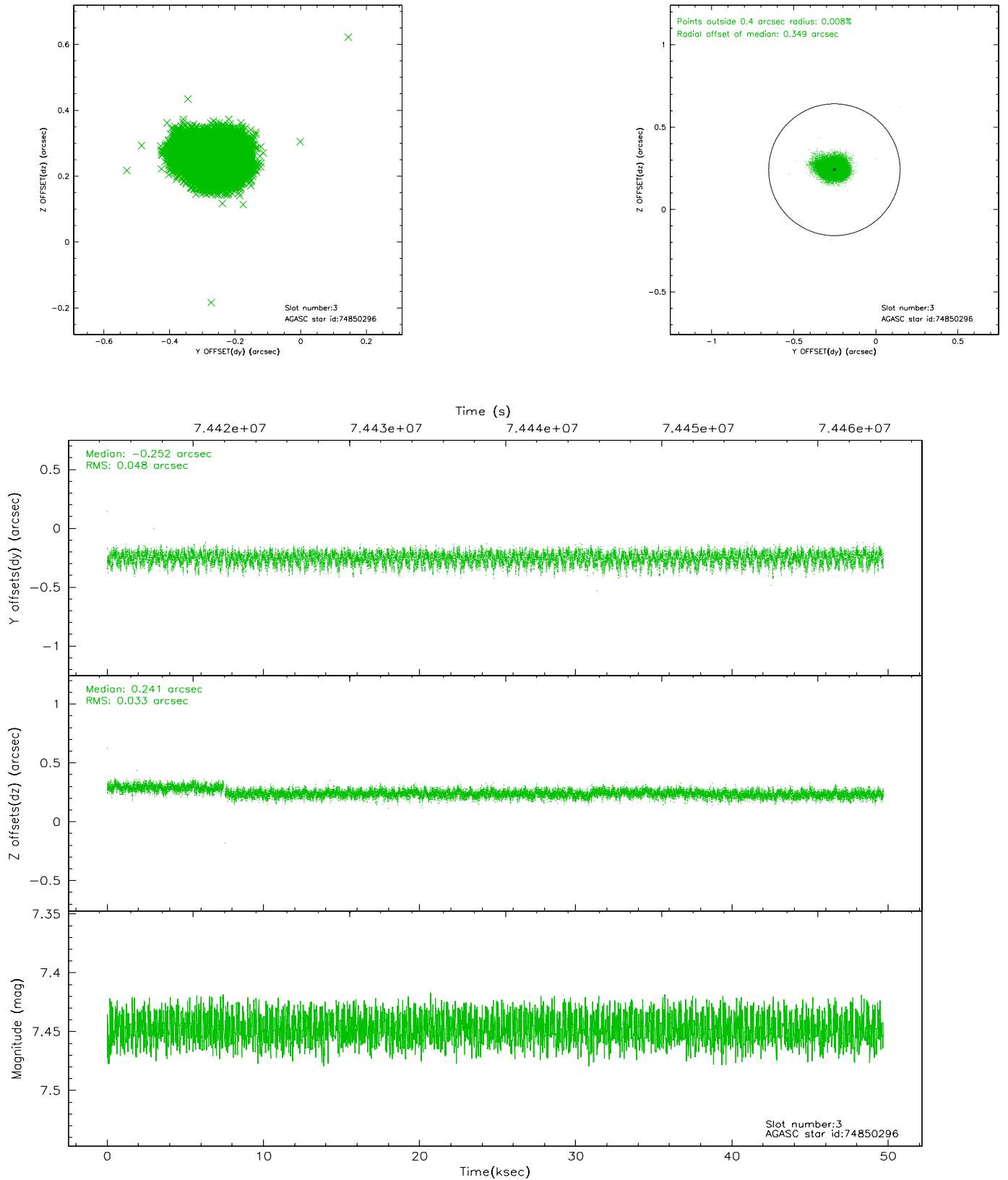


Slot Statistics

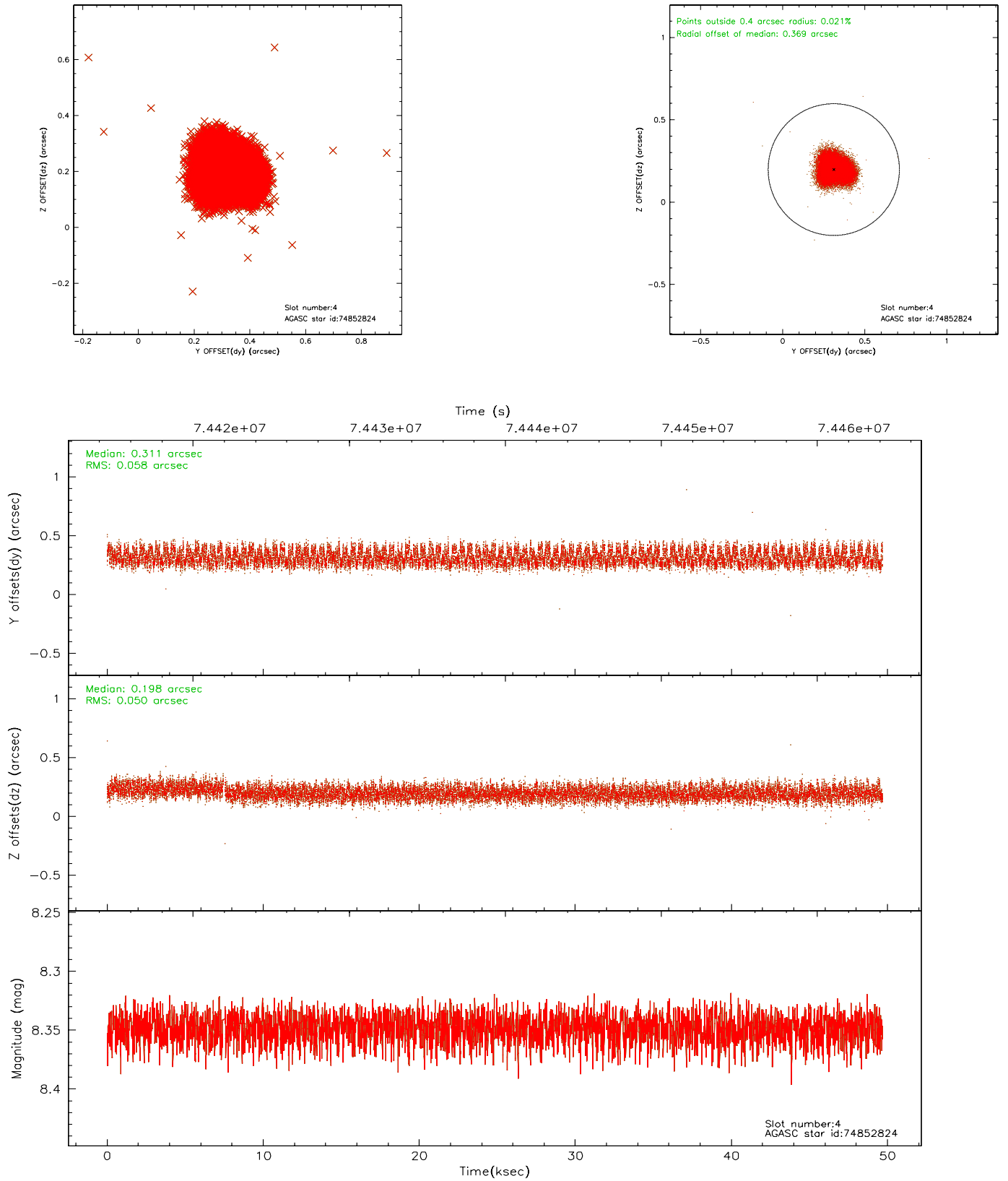
slot	status	id	mag	n_pts	med_dy	med_dz	dr1	dr2	ra	dec	mean_y	mean_z
0	FID	ACIS-I-3	7.42	12098	0.037	0.166	0.009	0.017	0.000000	0.000000	56.67	-1115.70
1	FID	ACIS-I-4	7.15	12094	-0.123	-0.080	0.007	0.014	0.000000	0.000000	2158.59	918.07
2	FID	ACIS-I-5	7.22	12095	-0.012	-0.016	0.008	0.014	0.000000	0.000000	-1808.86	914.94
3	GUIDE	74850296	7.45	24191	-0.252	0.241	0.061	0.101	342.233926	4.292787	1820.11	-1929.55
4	BAD	74852824	8.35	24192	0.311	0.198	0.084	0.125	341.408340	3.631157	470.14	1625.55
5	GUIDE	74858280	8.91	24189	-0.010	-0.024	0.073	0.117	342.234206	3.508589	-865.59	-1060.24
6	GUIDE	74843056	9.32	24180	0.112	-0.016	0.074	0.119	342.367012	3.242581	-1923.64	-1219.21
7	GUIDE	74858344	9.91	24034	-0.158	-0.372	0.108	0.176	341.287063	3.492296	129.46	2194.43

2.4 Star Slots

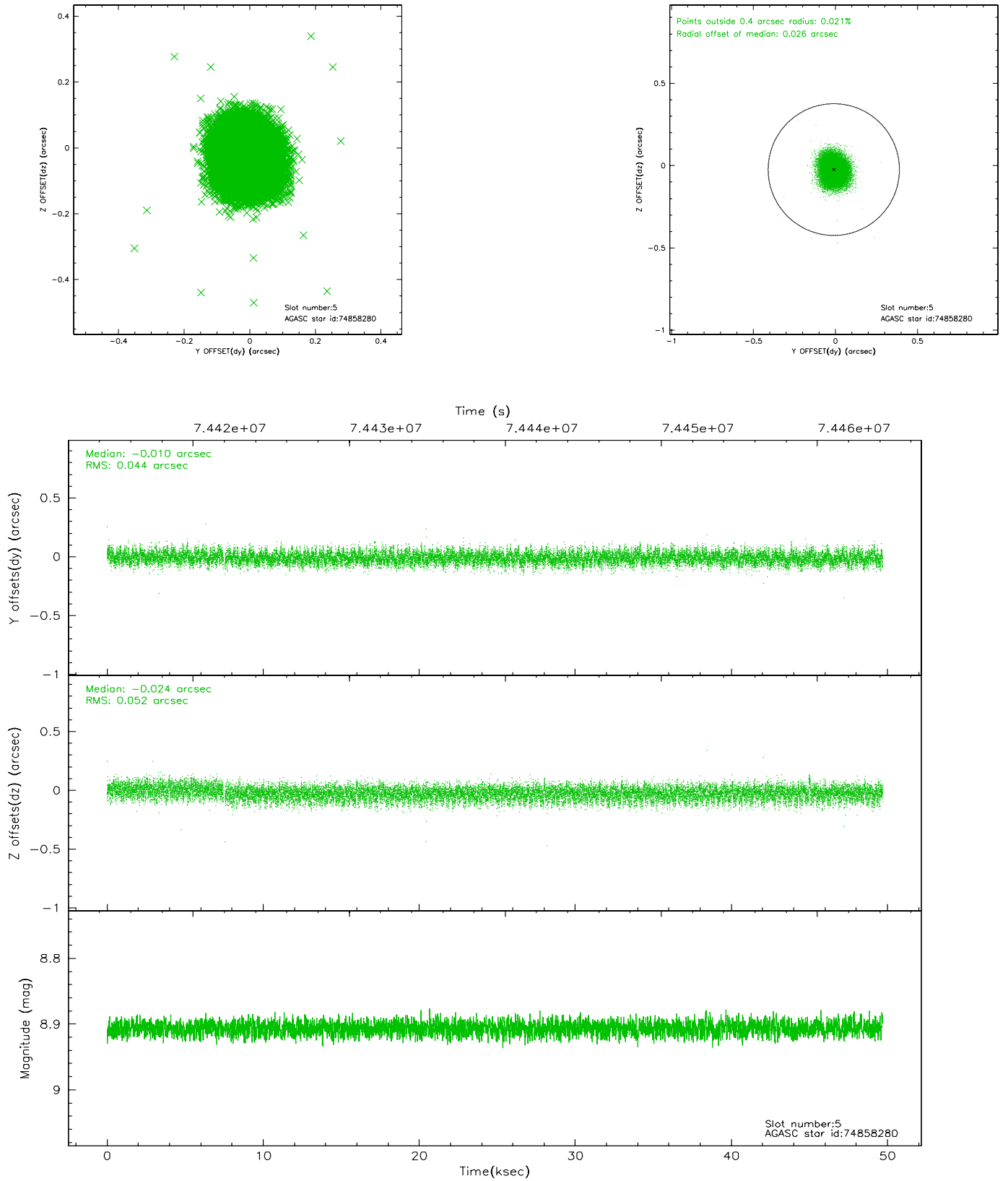
2.4.1 Slot 3



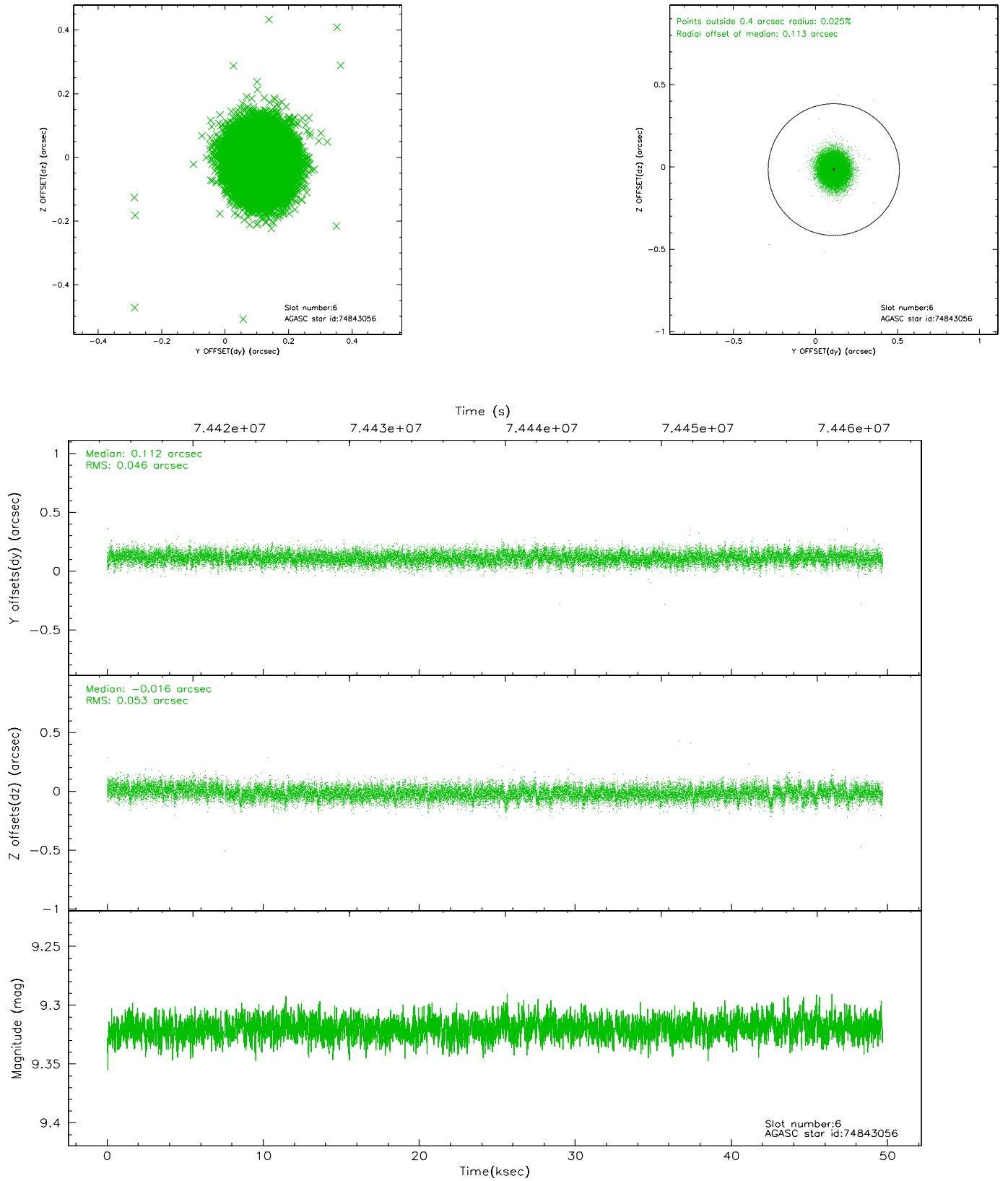
2.4.2 Slot 4



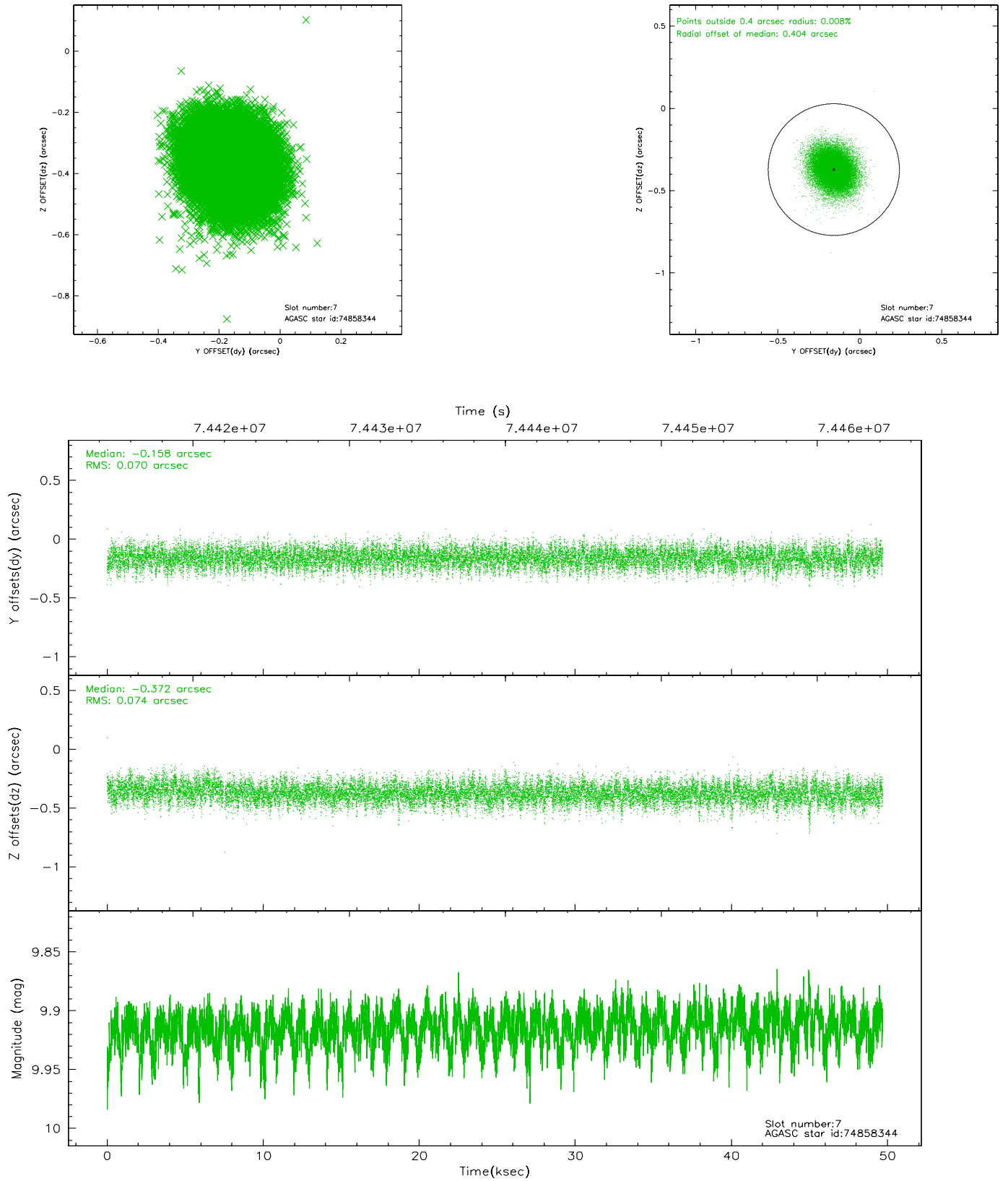
2.4.3 Slot 5



2.4.4 Slot 6

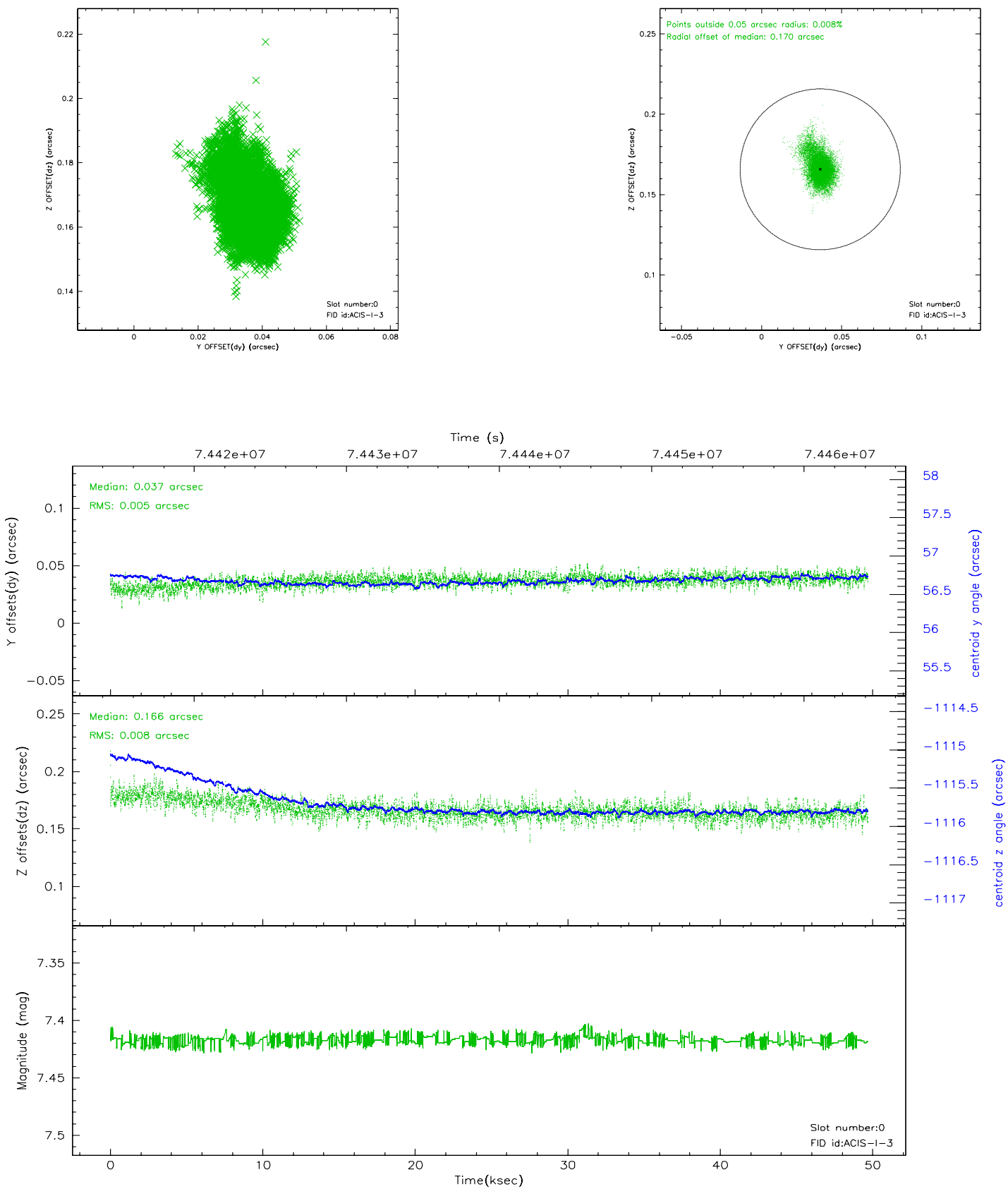


2.4.5 Slot 7

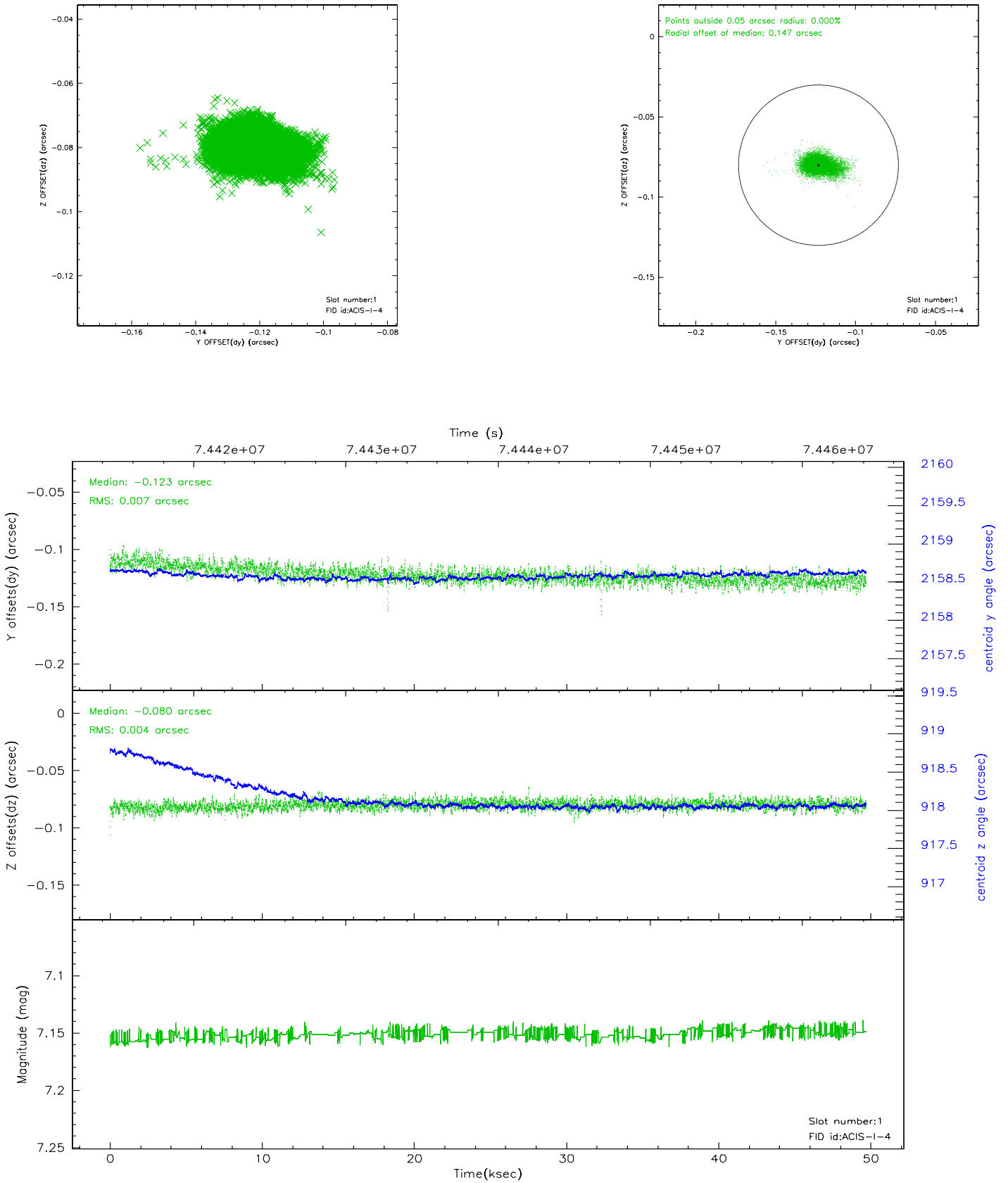


2.5 FID Slots

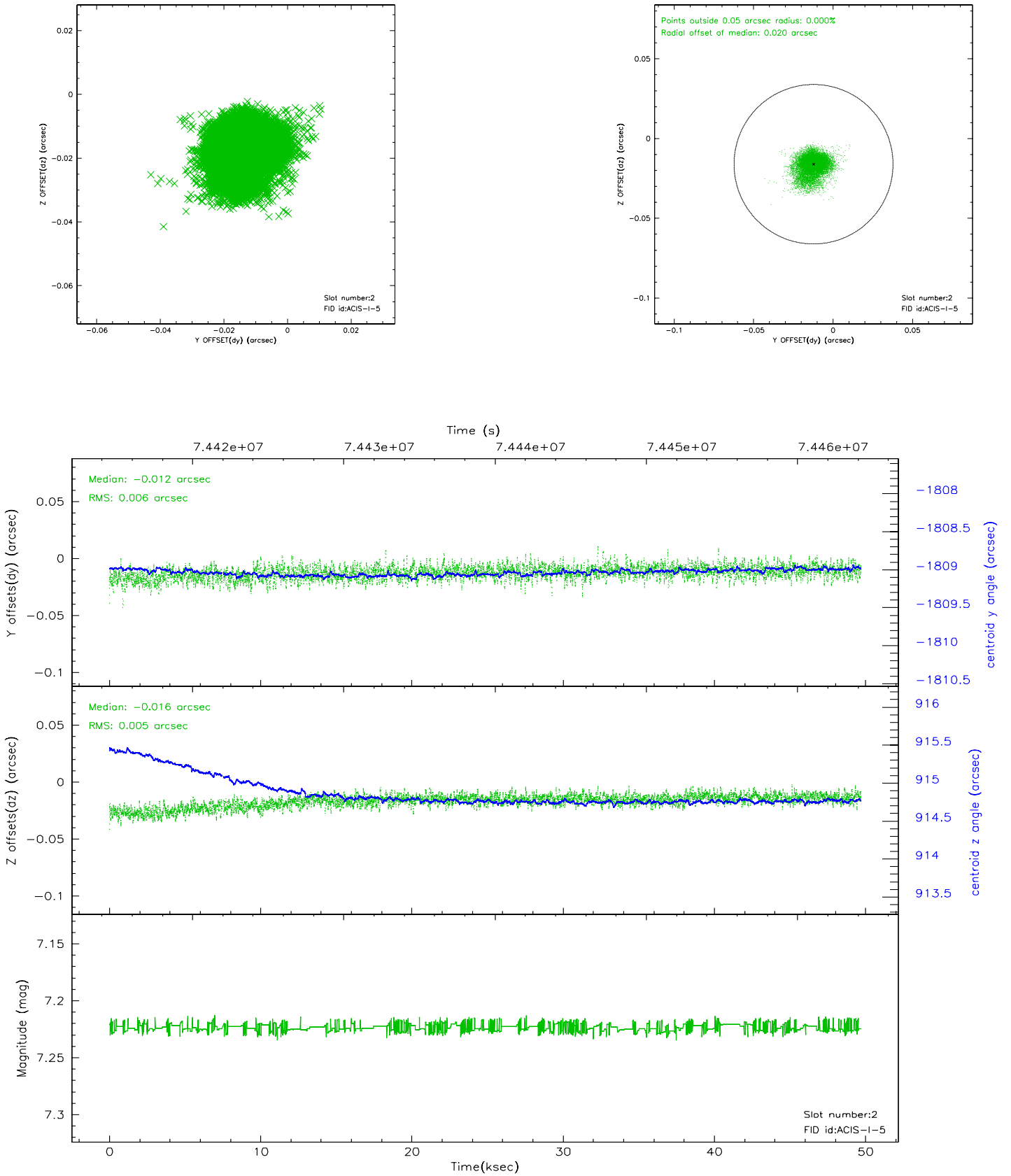
2.5.1 Slot 0



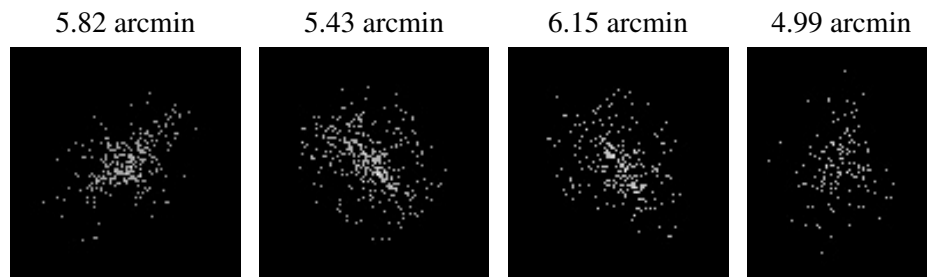
2.5.2 Slot 1



2.5.3 Slot 2



3 Point Sources



A Summary

A.1 Status

V&V Scientist	Beth Sundheim
V&V Date (YYYY-MM-DD)	2007.05.20
V&V Edition	1
V&V Disposition and Status	OK
V&V Charge Time	49.59

A.2 Comments

The guide star in slot 4 was removed from the aspect solution due to poor data quality. The aspect solution is not expected to be degraded by removing one guide star or fid light from the solution.